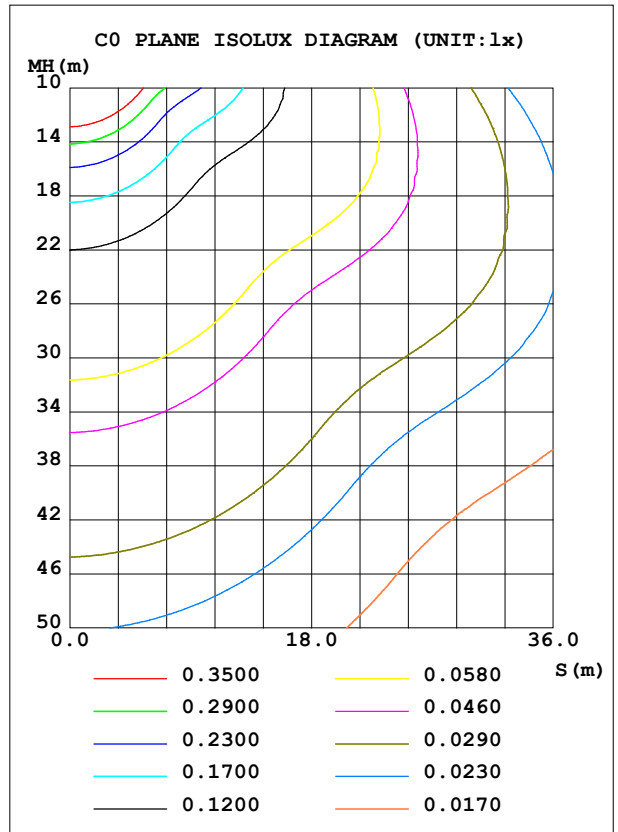
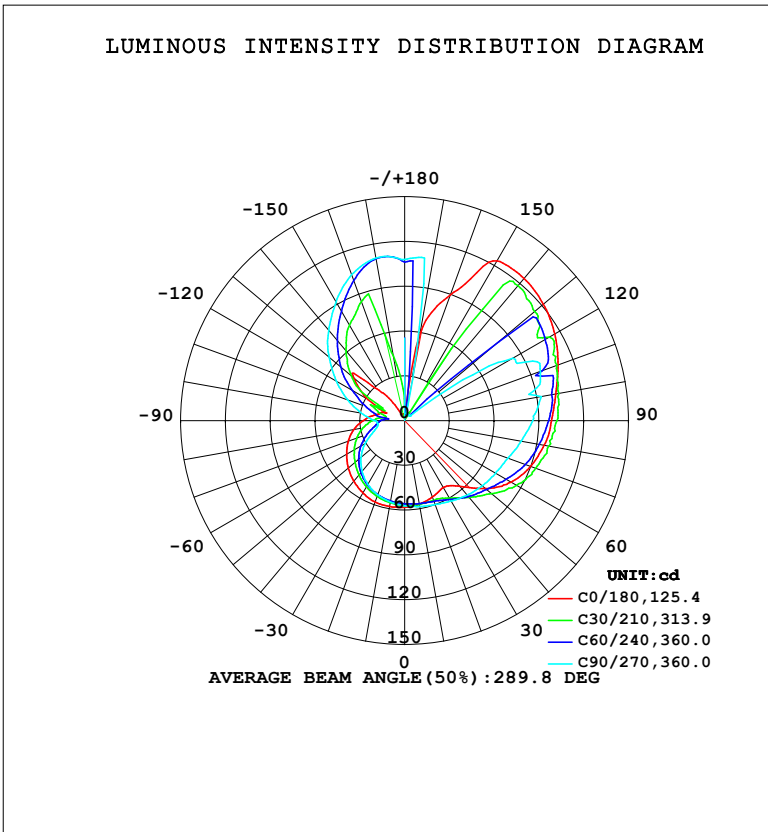


LUMINAIRE PHOTOMETRIC TEST REPORT

NAME: LED Strip	TYPE: Indoor lighting	WEIGHT: 20g
SPEC.: COB LED	DIM.: 500*10*1.9MM	SERIAL No.: 20230306009
MFR.: EVERFINE	SUR.: 500*10*1.9MM	Shielding Angle:

DATA OF LAMP		PHOTOMETRIC DATA			
MODEL(WCP)-UR-LLD-EU(PS) W-S		Imax (cd)	130.1	S/MH(C0/180)	1.44
NOMINAL POWER(W)	7.12452	LOR(%)	100.0	S/MH(C90/270)	1.29
RATED VOLTAGE(V)	DC 24	TOTAL FLUX(lm)	694.78	<input type="checkbox"/> UP, DN(C0-180)	27.8,35.3
NOMINAL FLUX(lm)	694.784	CIE CLASS	DIFFUSE	<input type="checkbox"/> UP, DN(C180-360)	19.6,17.4
LAMPS INSIDE	1	<input type="checkbox"/> up (%)	47.4	CIBSE SHR NOM	1.25
TEST VOLTAGE(V)	DC 24	<input type="checkbox"/> down (%)	52.6	CIBSE SHR MAX	1.35



C Range: 0 - 360DEG
 C Interval: 15.0DEG
 Test Speed: HIGH
 Temperature: 25.3°C
 Operators: DAMIN
 Test Date: 2023-03-07

Range: 0 - 180DEG
 Interval: 1.0DEG
 Test System: EVERFINE GO-2000B_V1 SYSTEM V2.00.471
 Humidity: 65.0%
 Test Distance: 4.880m [K=1.0000]
 Remarks:

ZONAL FLUX DIAGRAM

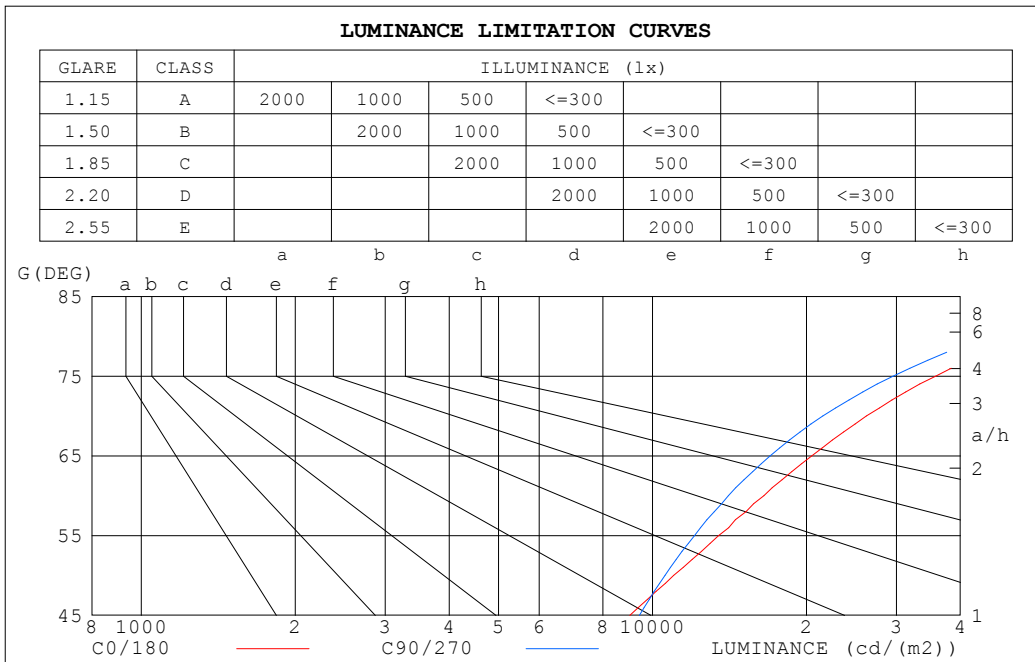
ZONAL FLUX DIAGRAM:

☐	C0	C45	C90	C135	C180	C225	C270	C315	☐	☐ zone	☐ total	%lum, lamp
10	56.87	56.76	58.50	67.72	58.49	55.13	55.36	61.81	0- 10	5.983	5.983	0.86,0.86
20	54.45	57.43	59.94	71.70	58.06	53.40	52.93	57.79	10- 20	17.64	23.62	3.4,3.4
30	51.86	61.36	62.24	76.11	56.01	50.65	49.36	52.61	20- 30	28.53	52.15	7.51,7.51
40	57.60	67.85	65.21	78.36	53.01	46.92	44.46	47.42	30- 40	38.63	90.78	13.1,13.1
50	70.71	75.22	67.99	81.76	49.34	42.14	38.21	42.14	40- 50	47.82	138.6	19.9,19.9
60	82.55	84.16	70.41	86.00	45.00	36.44	30.55	36.08	50- 60	55.56	194.2	27.9,27.9
70	89.66	91.57	73.69	90.35	40.20	30.72	22.37	30.22	60- 70	59.23	253.4	36.5,36.5
80	94.91	95.69	79.37	50.11	34.64	24.49	18.40	27.03	70- 80	58.28	311.7	44.9,44.9
90	98.53	99.56	85.81	40.09	27.76	18.99	19.98	27.67	80- 90	53.96	365.6	52.6,52.6
100	102.8	103.0	92.93	54.45	21.07	13.50	29.42	30.64	90-100	52.98	418.6	60.3,60.3
110	109.3	107.5	96.78	50.18	16.46	14.98	40.56	36.72	100-110	57.14	475.7	68.5,68.5
120	116.1	109.8	83.76	46.87	28.49	33.31	52.74	45.47	110-120	58.04	533.8	76.8,76.8
130	121.4	114.5	5.421	5.090	44.53	48.50	66.15	54.00	120-130	51.05	584.8	84.2,84.2
140	124.4	9.426	4.737	4.786	26.79	64.19	79.16	65.92	130-140	38.54	623.4	89.7,89.7
150	123.6	4.797	4.528	5.041	9.142	78.20	91.95	74.80	140-150	30.67	654.1	94.1,94.1
160	89.77	4.606	4.639	6.888	4.675	90.57	104.1	85.09	150-160	21.84	675.9	97.3,97.3
170	57.80	4.806	45.01	32.13	4.675	99.91	110.6	92.17	160-170	13.00	688.9	99.2,99.2
180	4.747	101.5	107.9	95.58	4.756	89.18	108.1	92.23	170-180	5.884	694.8	100,100
DEG	LUMINOUS INTENSITY:cd									UNIT:lm		

C Range: 0 - 360DEG
 C Interval: 15.0DEG
 Test Speed: HIGH
 Temperature:25.3°C
 Operators:DAMIN
 Test Date:2023-03-07

☐ Range: 0 - 180DEG
 ☐ Interval: 1.0DEG
 Test System:EVERFINE GO-2000B_V1 SYSTEM V2.00.471
 Humidity:65.0%
 Test Distance:4.880m [K=1.0000]
 Remarks:

LUMINANCE LIMITATION CURVES



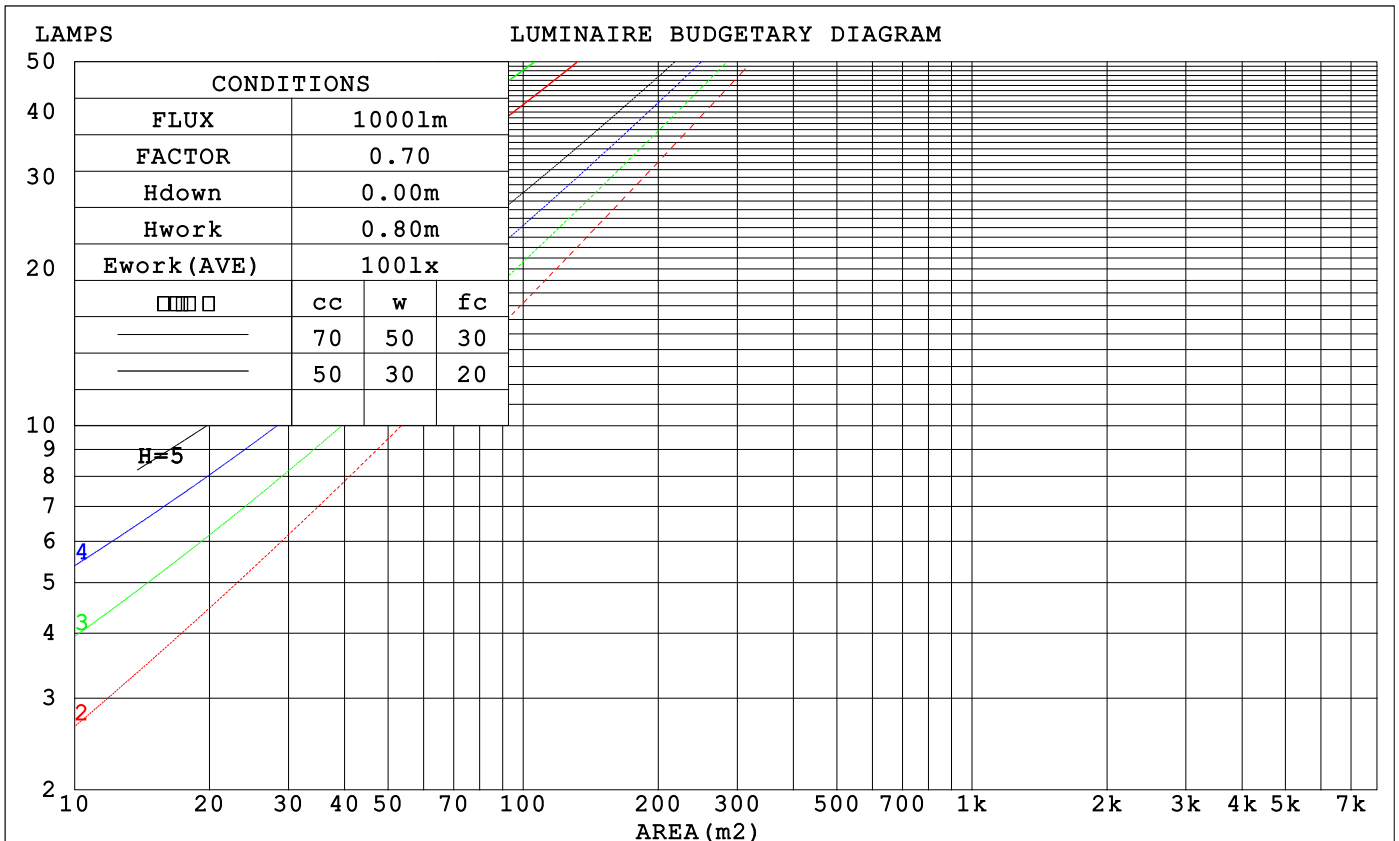
LUMINANCE cd/(m2)		
G (DEG)	C0/180	C90/270
85	111466	94677
80	54655	45705
75	35745	29513
70	26215	21546
65	20475	16978
60	16511	14082
55	13466	12071
50	11001	10578
45	9030	9424

C Range: 0 - 360DEG
 C Interval: 15.0DEG
 Test Speed: HIGH
 Temperature: 25.3°C
 Operators: DAMIN
 Test Date: 2023-03-07

Range: 0 - 180DEG
 Interval: 1.0DEG
 Test System: EVERFINE GO-2000B_V1 SYSTEM V2.00.471
 Humidity: 65.0%
 Test Distance: 4.880m [K=1.0000]
 Remarks:

CU AND LUMINAIRE BUDGETARY ESTIMATE DIAGRAM

□cc	80%			70%			50%			30%			10%			0
□w	50%	30%	10%	50%	30%	10%	50%	30%	10%	50%	30%	10%	50%	30%	10%	0
□fc	20%			20%			20%			20%			20%			0
RCR	RCR:Room Cavity Ratio						Coefficients of Utilization(CU)									
0.0	1.08	1.08	1.08	.00	.00	.00	.85	.85	.85	.71	.71	.71	.59	.59	.59	.53
1.0	.89	.83	.78	.82	.77	.73	.69	.65	.62	.57	.54	.51	.46	.44	.42	.36
2.0	.75	.67	.61	.69	.62	.57	.58	.53	.48	.48	.44	.40	.38	.35	.32	.27
3.0	.65	.56	.49	.60	.52	.45	.50	.44	.39	.41	.36	.32	.32	.29	.26	.22
4.0	.57	.47	.40	.52	.44	.37	.44	.37	.32	.36	.31	.26	.28	.24	.21	.17
5.0	.50	.41	.34	.46	.38	.31	.38	.32	.27	.32	.26	.22	.25	.21	.18	.14
6.0	.44	.35	.29	.41	.33	.27	.34	.28	.23	.28	.23	.19	.22	.18	.15	.12
7.0	.40	.31	.25	.37	.29	.23	.31	.25	.20	.25	.20	.17	.20	.16	.13	.11
8.0	.36	.28	.22	.33	.26	.20	.28	.22	.17	.23	.18	.14	.19	.15	.12	.09
9.0	.33	.25	.19	.30	.23	.18	.26	.20	.15	.21	.16	.13	.17	.13	.10	.08
10.0	.30	.22	.17	.28	.21	.16	.23	.18	.14	.20	.15	.11	.16	.12	.09	.07



C Range: 0 - 360DEG
 C Interval: 15.0DEG
 Test Speed: HIGH
 Temperature:25.3°C
 Operators:DAMIN
 Test Date:2023-03-07

□ Range: 0 - 180DEG
 □ Interval: 1.0DEG
 Test System:EVERFINE GO-2000B_V1 SYSTEM V2.00.471
 Humidity:65.0%
 Test Distance:4.880m [K=1.0000]
 Remarks:

WEC AND CCEC

□cc	80%			70%			50%			30%			10%			0
□w	50%	30%	10%	50%	30%	10%	50%	30%	10%	50%	30%	10%	50%	30%	10%	0
□fc	20%			20%			20%			20%			20%			0
RCR	RCR:Room Cavity Ratio						Wall Exitance Coefficients (WEC)									
0.0																
1.0	.386	.220	.070	.365	.208	.066	.324	.186	.059	.287	.166	.053	.253	.147	.047	
2.0	.329	.180	.055	.309	.170	.052	.272	.151	.047	.238	.134	.042	.207	.117	.037	
3.0	.290	.154	.046	.272	.145	.044	.238	.129	.039	.207	.113	.035	.178	.098	.030	
4.0	.259	.135	.040	.243	.127	.038	.212	.112	.034	.183	.098	.030	.157	.085	.026	
5.0	.235	.120	.035	.220	.113	.033	.192	.100	.029	.165	.087	.026	.140	.075	.023	
6.0	.215	.108	.031	.201	.102	.029	.175	.090	.026	.150	.078	.023	.127	.067	.020	
7.0	.198	.098	.028	.185	.092	.026	.161	.081	.023	.138	.071	.021	.117	.061	.018	
8.0	.183	.090	.025	.172	.084	.024	.149	.074	.021	.128	.065	.019	.108	.055	.016	
9.0	.171	.083	.023	.160	.078	.022	.139	.069	.019	.119	.060	.017	.100	.051	.015	
10.0	.160	.077	.021	.149	.072	.020	.130	.064	.018	.111	.055	.016	.094	.047	.014	

□cc	80%			70%			50%			30%			10%			0
□w	50%	30%	10%	50%	30%	10%	50%	30%	10%	50%	30%	10%	50%	30%	10%	0
□fc	20%			20%			20%			20%			20%			0
RCR	RCR:Room Cavity Ratio						Ceiling Cavity Exitance Coefficients (CCEC)									
0.0	.551	.551	.551	.471	.471	.471	.322	.322	.322	.185	.185	.185	.059	.059	.059	
1.0	.550	.519	.492	.470	.446	.424	.322	.307	.293	.185	.177	.170	.059	.057	.055	
2.0	.544	.498	.460	.466	.429	.398	.319	.297	.277	.184	.173	.163	.059	.056	.053	
3.0	.537	.483	.440	.460	.416	.381	.316	.289	.267	.182	.169	.158	.059	.055	.052	
4.0	.529	.471	.427	.454	.407	.371	.312	.284	.261	.181	.166	.154	.058	.054	.051	
5.0	.522	.462	.418	.448	.400	.363	.309	.279	.257	.179	.164	.152	.058	.054	.050	
6.0	.515	.455	.411	.443	.394	.358	.305	.276	.253	.177	.162	.151	.057	.053	.050	
7.0	.508	.449	.407	.437	.389	.354	.302	.273	.251	.176	.161	.149	.057	.053	.049	
8.0	.502	.443	.403	.432	.385	.351	.299	.270	.249	.174	.159	.149	.056	.052	.049	
9.0	.496	.439	.400	.427	.381	.349	.296	.268	.248	.172	.158	.148	.056	.052	.049	
10.0	.490	.435	.398	.423	.378	.347	.293	.266	.247	.171	.157	.147	.055	.052	.049	

C Range: 0 - 360DEG
 C Interval: 15.0DEG
 Test Speed: HIGH
 Temperature:25.3°C
 Operators:DAMIN
 Test Date:2023-03-07

□ Range: 0 - 180DEG
 □ Interval: 1.0DEG
 Test System:EVERFINE GO-2000B_V1 SYSTEM V2.00.471
 Humidity:65.0%
 Test Distance:4.880m [K=1.0000]
 Remarks:

UGR(Unified Glare Rating) Table

ceiling/cavity	0.7	0.7	0.5	0.5	0.3	0.7	0.7	0.5	0.5	0.3
walls	0.5	0.3	0.5	0.3	0.3	0.5	0.3	0.5	0.3	0.3
working plane	0.2	0.2	0.2	0.2	0.2	0.2	0.2	0.2	0.2	0.2
Room dimensions	Viewed crosswise					Viewed endwise				
x = 2H y = 2H	21.6	22.7	22.4	23.5	24.6	20.8	21.9	21.6	22.7	23.8
3H	25.2	26.2	26.1	27.1	28.2	24.2	25.2	25.0	26.0	27.2
4H	27.2	28.1	28.1	29.0	30.2	26.1	27.0	27.0	27.9	29.1
6H	29.4	30.2	30.3	31.1	32.3	28.3	29.1	29.2	30.0	31.2
8H	30.6	31.4	31.5	32.3	33.5	29.5	30.3	30.4	31.2	32.4
12H	32.0	32.8	32.9	33.7	34.9	30.9	31.7	31.8	32.6	33.8
4H 2H	22.7	23.6	23.6	24.5	25.7	22.2	23.1	23.1	24.0	25.2
3H	26.4	27.2	27.3	28.1	29.3	25.6	26.4	26.5	27.4	28.6
4H	28.5	29.3	29.4	30.2	31.4	27.7	28.4	28.6	29.3	30.6
6H	30.8	31.5	31.8	32.5	33.7	29.9	30.6	30.9	31.5	32.8
8H	32.1	32.7	33.1	33.7	35.0	31.2	31.8	32.1	32.8	34.0
12H	33.6	34.2	34.6	35.1	36.4	32.6	33.2	33.6	34.2	35.4
8H 4H	29.3	29.9	30.2	30.8	32.1	28.6	29.2	29.6	30.2	31.5
6H	31.9	32.4	32.8	33.4	34.7	31.1	31.7	32.1	32.6	33.9
8H	33.3	33.8	34.3	34.8	36.1	32.6	33.0	33.6	34.0	35.3
12H	35.0	35.4	36.0	36.4	37.8	34.2	34.6	35.2	35.6	36.9
12H 4H	29.5	30.0	30.4	31.0	32.3	28.9	29.5	29.9	30.5	31.7
6H	32.2	32.6	33.2	33.6	34.9	31.6	32.0	32.6	33.0	34.3
8H	33.8	34.2	34.8	35.2	36.5	33.1	33.5	34.1	34.5	35.9
Variations with the observer position at spacings(CIE Pub.117):										
S = 1.0H	+ 0.1 / - 0.1					+ 0.1 / - 0.1				
1.5H	+ 0.2 / - 0.3					+ 0.2 / - 0.3				
2.0H	+ 0.3 / - 0.4					+ 0.3 / - 0.4				

CIE Pub.117, 694.8 lm Total Lamp Luminous Flux Correct (8log(F/F0) = -1.3)
 Area: 0.01 m2

C Range: 0 - 360DEG
 C Interval: 15.0DEG
 Test Speed: HIGH
 Temperature:25.3°C
 Operators:DAMIN
 Test Date:2023-03-07

Range: 0 - 180DEG
 Interval: 1.0DEG
 Test System:EVERFINE GO-2000B_V1 SYSTEM V2.00.471
 Humidity:65.0%
 Test Distance:4.880m [K=1.0000]
 Remarks:

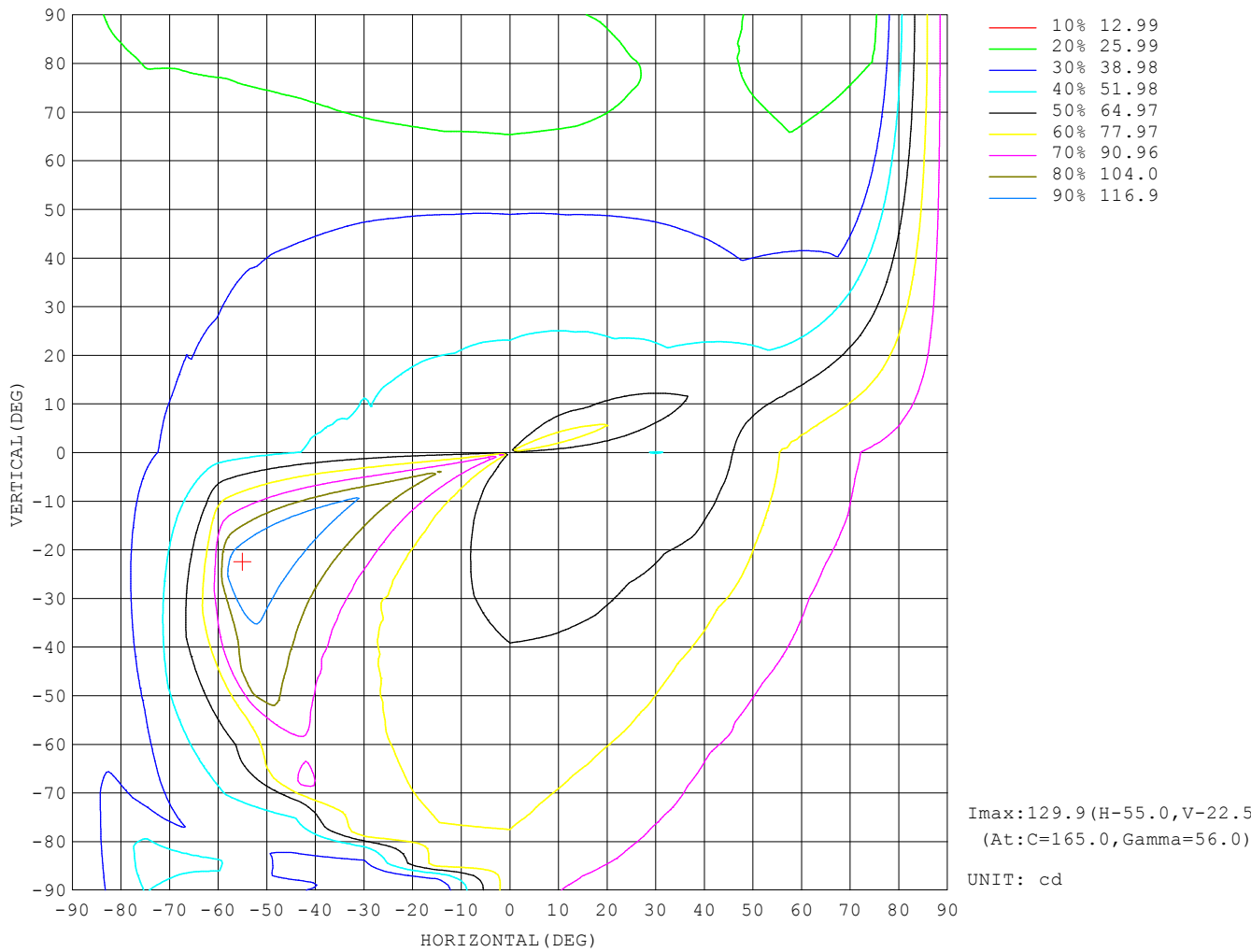
UTILIZATION FACTORS TABLE

REFLECTANCE										
Ceiling	0.8	0.8	0.8	0.7	0.7	0.7	0.5	0.5	0.5	0
Walls	0.7	0.5	0.3	0.7	0.5	0.3	0.7	0.5	0.3	0
Working plane	0.2	0.2	0.2	0.2	0.2	0.2	0.2	0.2	0.2	0
ROOM INDEX	UTILIZATION FACTORS (PERCENT) $k(RI) \times RCR = 5$									
$k = 0.60$	38	26	19	36	25	18	32	23	17	9
0.80	47	33	25	44	32	24	39	29	22	13
1.00	54	40	32	51	38	30	44	36	27	16
1.25	61	47	38	57	45	36	49	40	33	19
1.50	66	53	44	62	50	41	53	44	37	22
2.00	74	62	53	69	58	50	59	50	44	26
2.50	79	68	59	73	63	55	63	55	49	29
3.00	83	72	64	77	68	60	65	58	53	31
4.00	88	79	72	81	74	67	69	63	58	35
5.00	91	84	77	84	78	72	72	67	62	37
ROOM INDEX	UF(total)									Direct
According to DIN EN 13032-2 2004			Suspended				SHRNOM = 1.25			

C Range: 0 - 360DEG
 C Interval: 15.0DEG
 Test Speed: HIGH
 Temperature: 25.3°C
 Operators: DAMIN
 Test Date: 2023-03-07

Range: 0 - 180DEG
 Interval: 1.0DEG
 Test System: EVERFINE GO-2000B_V1 SYSTEM V2.00.471
 Humidity: 65.0%
 Test Distance: 4.880m [K=1.0000]
 Remarks:

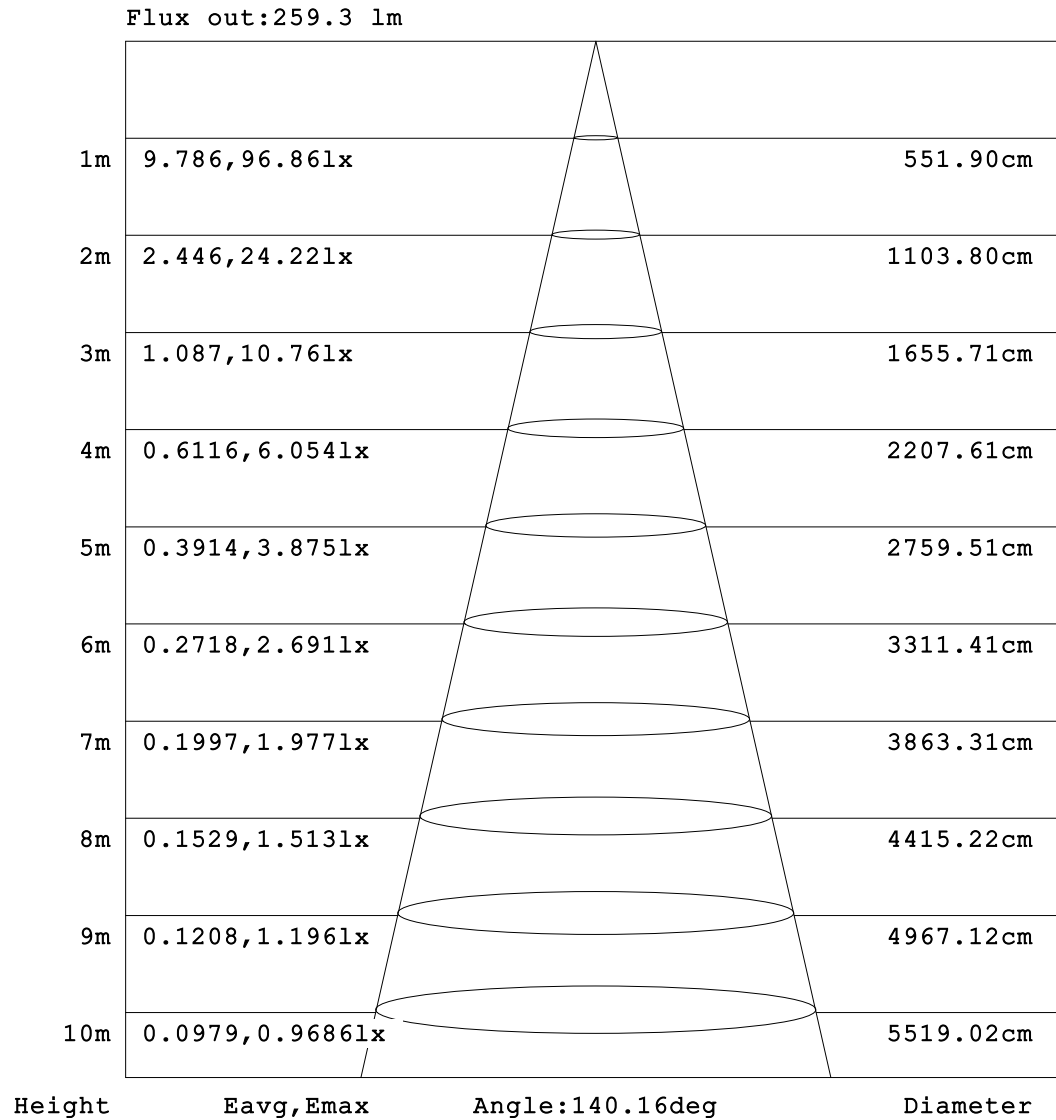
ISOCANDELA DIAGRAM



C Range: 0 - 360DEG
 C Interval: 15.0DEG
 Test Speed: HIGH
 Temperature: 25.3°C
 Operators: DAMIN
 Test Date: 2023-03-07

Range: 0 - 180DEG
 Interval: 1.0DEG
 Test System: EVERFINE GO-2000B_V1 SYSTEM V2.00.471
 Humidity: 65.0%
 Test Distance: 4.880m [K=1.0000]
 Remarks:

AAI Figure

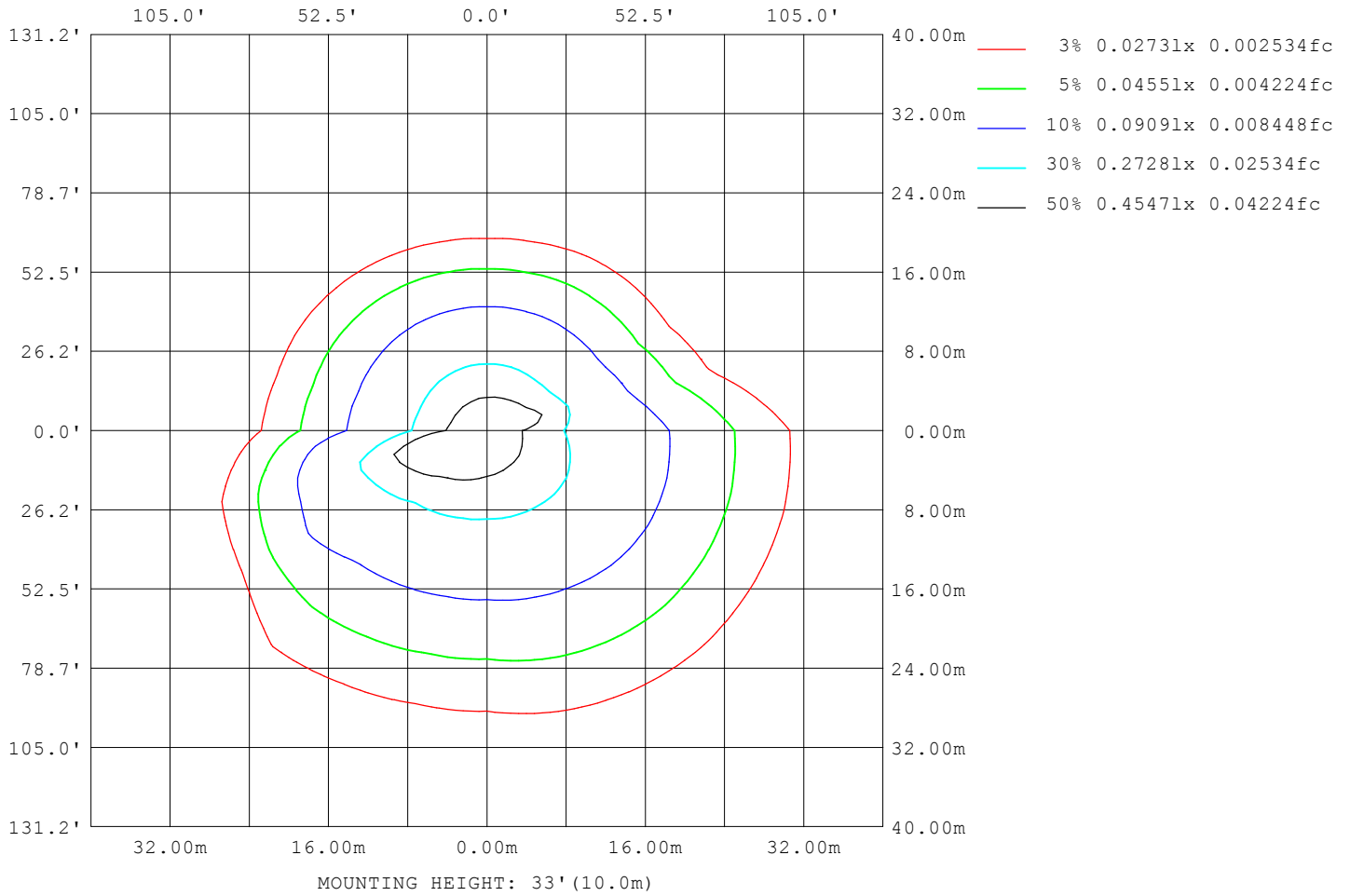


Note:The Curves indicate the illuminated area and the average illumination when the luminaire is at different distance.

C Range: 0 - 360DEG
 C Interval: 15.0DEG
 Test Speed: HIGH
 Temperature:25.3°C
 Operators:DAMIN
 Test Date:2023-03-07

Range: 0 - 180DEG
 Interval: 1.0DEG
 Test System:EVERFINE GO-2000B_V1 SYSTEM V2.00.471
 Humidity:65.0%
 Test Distance:4.880m [K=1.0000]
 Remarks:

ISOLUX DIAGRAM



C Range: 0 - 360DEG
 C Interval: 15.0DEG
 Test Speed: HIGH
 Temperature: 25.3°C
 Operators: DAMIN
 Test Date: 2023-03-07

Range: 0 - 180DEG
 Interval: 1.0DEG
 Test System: EVERFINE GO-2000B_V1 SYSTEM V2.00.471
 Humidity: 65.0%
 Test Distance: 4.880m [K=1.0000]
 Remarks:

LED Avg.L Report

NAME: LED Strip	TYPE: Indoor lighting	WEIGHT: 20g
SPEC.: COB LED	DIM.: 500*10*1.9MM	SERIAL No.: 20230306009
MFR.: EVERFINE	SUR.: 500*10*1.9MM	Shielding Angle:

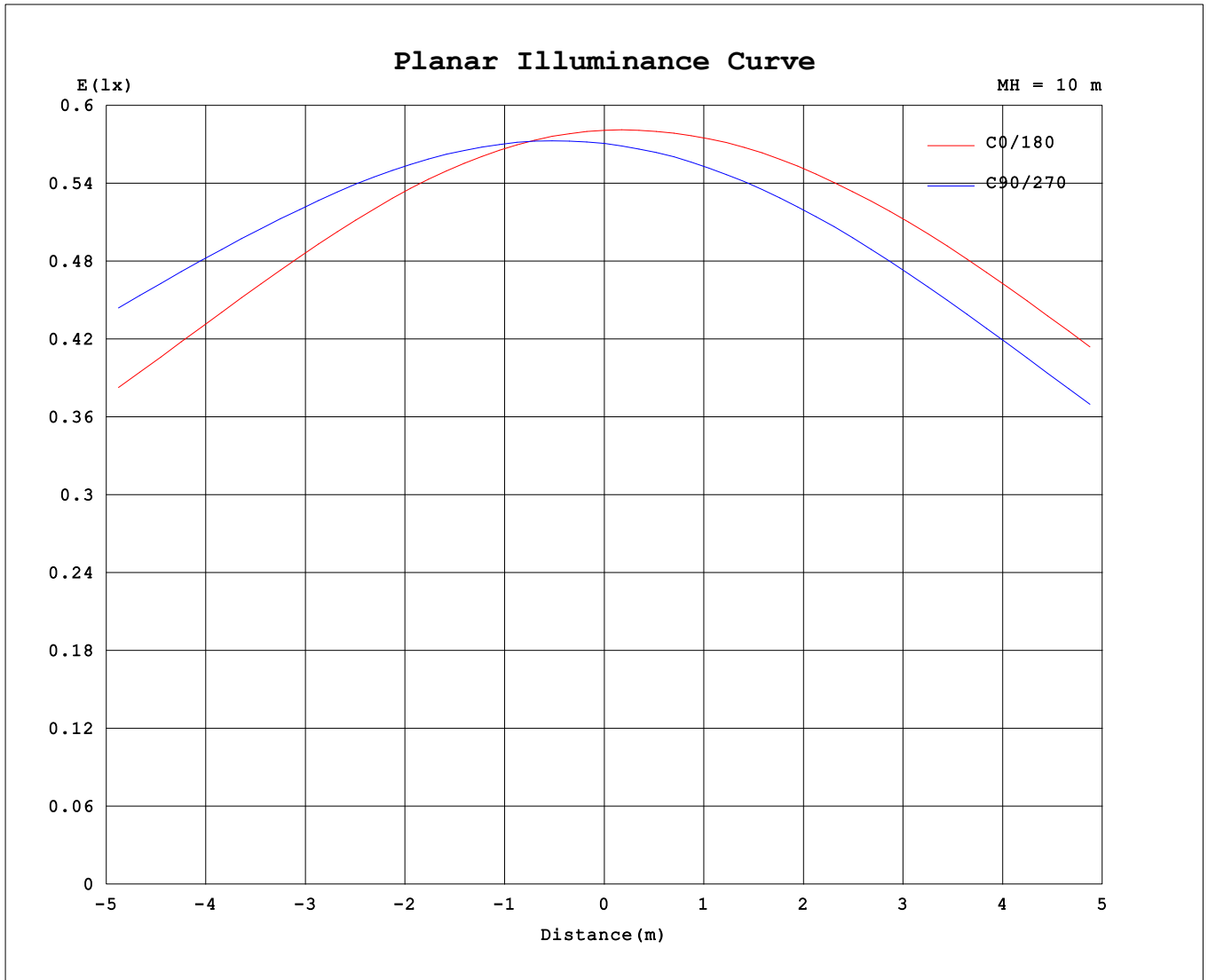
AvgL	cd/m2
L_0~180 (65) av	15285
L_0~180 (75) av	25133
L_0~180 (85) av	73644
L_90~270 (65) av	11594
L_90~270 (75) av	18552
L_90~270 (85) av	57979
L_45 (65) av	14382
L_45 (75) av	22953
L_45 (85) av	52690

Standard: GB/T 29293-2012

C Range: 0 - 360DEG
 C Interval: 15.0DEG
 Test Speed: HIGH
 Temperature:25.3℃
 Operators:DAMIN
 Test Date:2023-03-07

Range: 0 - 180DEG
 Interval: 1.0DEG
 Test System:EVERFINE GO-2000B_V1 SYSTEM V2.00.471
 Humidity:65.0%
 Test Distance:4.880m [K=1.0000]
 Remarks:

Planar Illuminance Curve



C Range: 0 - 360DEG
 C Interval: 15.0DEG
 Test Speed: HIGH
 Temperature: 25.3°C
 Operators: DAMIN
 Test Date: 2023-03-07

Range: 0 - 180DEG
 Interval: 1.0DEG
 Test System: EVERFINE GO-2000B_V1 SYSTEM V2.00.471
 Humidity: 65.0%
 Test Distance: 4.880m [K=1.0000]
 Remarks:

LUMINOUS DISTRIBUTION INTENSITY DATA

Table--1

UNIT: cd

C (DEG) \ □ (DEG)	0	15	30	45	60	75	90	105	120	135	150	165	180	195	210	225	240	255	270
0	58.1	57.4	56.8	56.3	55.7	56.3	57.1	58.8	61.4	65.1	76.4	94.2	58.1	57.4	56.8	56.3	55.7	56.3	57.1
5	57.6	57.5	57.2	56.5	56.1	56.8	57.8	59.8	62.6	66.9	79.5	97.6	58.3	57.3	56.5	55.8	55.3	55.7	56.3
10	56.9	57.0	57.1	56.8	56.5	57.4	58.5	60.8	63.8	67.7	82.7	101	58.5	57.3	56.0	55.1	54.7	55.0	55.4
15	55.8	56.2	56.9	57.0	56.9	57.9	59.2	61.6	65.2	70.3	85.7	105	58.4	56.0	55.1	54.4	53.9	54.1	54.3
20	54.5	55.2	56.9	57.4	57.5	58.6	59.9	62.5	66.7	71.7	88.6	108	58.1	54.7	54.0	53.4	52.8	52.9	52.9
25	53.0	54.4	57.6	58.8	58.9	59.8	60.9	63.7	68.2	74.5	91.2	112	57.3	53.4	52.8	52.2	51.5	51.4	51.3
30	51.9	55.5	60.1	61.4	61.1	61.5	62.2	65.0	69.7	76.1	93.8	116	56.0	52.0	51.3	50.6	49.8	49.6	49.4
35	53.2	58.4	63.2	64.5	63.7	63.5	63.7	66.2	71.0	77.7	96.4	120	54.6	50.7	49.5	48.9	47.8	47.5	47.1
40	57.6	62.4	67.2	67.9	66.5	65.6	65.2	67.5	72.2	78.4	98.8	123	53.0	49.4	47.6	46.9	45.6	45.0	44.5
45	63.8	67.7	71.4	71.2	69.1	67.7	66.6	68.8	73.6	80.2	101	126	51.3	47.0	45.5	44.7	43.1	42.2	41.5
50	70.7	74.4	76.1	75.2	71.7	69.8	68.0	70.0	75.1	81.8	104	129	49.3	44.2	43.4	42.1	40.3	38.9	38.2
55	77.2	80.3	81.9	79.6	75.0	71.7	69.2	71.2	76.6	83.2	107	130	47.2	43.1	41.3	39.3	37.2	35.4	34.5
60	82.6	86.1	86.8	84.2	78.5	74.1	70.4	72.2	78.0	86.0	111	127	45.0	41.3	39.0	36.4	33.8	31.6	30.5
65	86.5	90.5	90.5	88.1	82.4	76.8	71.8	73.4	79.7	88.4	113	89.2	42.7	38.4	36.6	33.6	30.3	27.5	26.2
70	89.7	93.6	93.5	91.6	86.1	80.2	73.7	75.0	81.4	90.3	78.4	70.1	40.2	35.9	34.2	30.7	26.7	23.2	22.4
75	92.5	96.2	96.3	93.9	89.0	83.3	76.4	77.2	84.2	88.0	62.6	56.8	37.6	33.8	31.5	27.8	23.2	19.5	19.6
80	94.9	98.1	98.3	95.7	91.6	86.3	79.4	80.1	85.0	50.1	51.8	43.4	34.6	30.9	28.3	24.5	20.2	17.4	18.4
85	97.1	99.7	99.8	97.6	94.1	89.4	82.5	83.2	37.9	38.0	41.0	36.6	31.2	27.7	24.9	21.1	17.9	16.6	18.5
90	98.5	100	102	99.6	96.5	93.1	85.8	28.3	34.8	40.1	43.5	52.5	27.8	23.6	21.8	19.0	16.1	17.6	20.0
95	100	102	103	102	98.9	95.7	89.2	53.5	43.6	32.1	31.5	32.5	24.9	20.8	18.5	14.7	13.1	19.7	24.2
100	103	103	105	103	100.0	97.9	92.9	63.5	58.2	54.4	56.8	48.5	21.1	16.3	13.4	13.5	18.9	23.7	29.4
105	106	106	106	105	103	87.7	93.8	73.5	58.5	49.6	46.0	46.3	18.0	12.6	14.4	19.0	22.1	28.7	34.9
110	109	109	109	108	98.1	101	96.8	78.9	64.4	50.2	55.2	45.7	16.5	12.7	19.5	15.0	27.6	34.0	40.6
115	113	112	110	102	106	103	94.7	67.5	56.3	48.6	49.1	48.4	18.9	19.8	25.4	26.5	33.6	40.2	46.5
120	116	115	112	110	109	103	83.8	62.1	48.2	46.9	46.3	36.5	28.5	19.7	16.9	33.3	40.4	46.6	52.7
125	119	118	111	113	111	97.8	47.8	23.3	19.7	30.2	28.6	25.6	36.8	24.1	37.9	41.3	48.4	53.8	59.2
130	121	119	114	114	82.7	27.1	5.42	4.88	4.96	5.09	8.60	17.1	44.5	39.7	46.6	48.5	55.9	61.3	66.1
135	123	112	116	114	6.82	5.21	4.93	4.78	4.83	4.96	5.37	5.08	38.6	50.5	54.3	57.0	62.9	68.1	73.2
140	124	118	118	9.43	5.17	4.93	4.74	4.54	4.60	4.79	7.13	6.28	26.8	58.3	61.3	64.2	70.1	75.0	79.2
145	125	119	91.2	5.08	4.85	4.65	4.51	4.49	4.56	4.73	7.69	8.79	18.4	63.9	68.1	70.9	77.5	82.2	85.4
150	124	120	5.98	4.80	4.57	4.57	4.53	4.53	4.60	5.04	7.60	9.70	9.14	38.4	74.0	78.2	84.8	89.5	91.9
155	105	99.9	4.85	4.58	4.57	4.59	4.57	4.57	4.66	6.06	8.64	9.59	4.69	26.3	78.5	84.8	92.5	96.5	98.5
160	89.8	46.0	4.64	4.61	4.61	4.65	4.64	4.68	4.77	6.89	9.50	9.43	4.67	15.5	85.0	90.6	100.0	103	104
165	77.4	4.92	4.61	4.66	4.74	4.94	5.08	5.23	5.34	7.91	9.85	9.33	4.67	4.86	77.3	96.6	106	108	108
170	57.8	4.73	4.64	4.81	4.98	17.2	45.0	59.1	44.5	32.1	17.9	13.1	4.67	4.69	44.2	99.9	110	111	111
175	5.07	4.69	4.70	5.12	46.3	110	110	108	103	97.6	52.1	34.3	4.69	4.66	27.8	104	110	111	110
180	4.75	4.72	4.88	102	106	108	108	106	102	95.6	80.1	63.9	4.76	4.67	6.08	89.2	106	108	108

C Range: 0 - 360DEG
 C Interval: 15.0DEG
 Test Speed: HIGH
 Temperature: 25.3°C
 Operators: DAMIN
 Test Date: 2023-03-07

□ Range: 0 - 180DEG
 □ Interval: 1.0DEG
 Test System: EVERFINE GO-2000B_V1 SYSTEM V2.00.471
 Humidity: 65.0%
 Test Distance: 4.880m [K=1.0000]
 Remarks:

LUMINOUS DISTRIBUTION INTENSITY DATA

Table--2

UNIT: cd

C (DEG) \ □ (DEG)	285	300	315	330	345														
0	58.8	61.4	65.1	76.4	94.2														
5	57.7	60.0	63.4	73.0	90.5														
10	56.6	58.5	61.8	69.8	86.8														
15	55.2	56.9	60.0	66.6	82.9														
20	53.7	55.1	57.8	63.4	79.0														
25	52.1	53.2	55.4	60.3	75.2														
30	50.1	51.1	52.6	57.2	71.2														
35	47.8	48.8	50.2	54.0	67.4														
40	45.2	46.2	47.4	50.8	63.6														
45	42.2	43.4	44.5	47.6	59.8														
50	38.9	40.5	42.1	44.5	56.2														
55	35.3	37.3	39.3	41.3	52.7														
60	31.5	34.1	36.1	38.1	49.0														
65	27.6	30.7	33.0	34.7	45.4														
70	24.9	28.4	30.2	31.3	41.5														
75	23.1	27.3	27.9	27.7	37.2														
80	19.7	27.3	27.0	24.0	32.8														
85	23.8	28.2	27.0	20.8	28.3														
90	25.8	29.6	27.7	19.3	23.8														
95	29.0	31.5	28.7	19.4	19.7														
100	33.0	33.5	30.6	21.1	16.5														
105	37.8	37.5	33.1	24.3	14.9														
110	43.3	42.7	36.7	28.8	15.1														
115	49.2	47.8	41.3	33.9	17.6														
120	54.9	53.6	45.5	38.7	20.8														
125	60.5	59.6	49.4	43.5	24.2														
130	66.4	65.7	54.0	48.2	27.5														
135	73.2	71.3	60.2	52.6	31.3														
140	79.2	76.2	65.9	56.7	35.2														
145	84.6	81.3	70.8	61.7	39.0														
150	90.4	87.9	74.8	67.6	41.6														
155	96.1	92.8	79.1	73.6	44.1														
160	102	97.3	85.1	78.5	48.3														
165	106	101	89.3	81.4	53.2														
170	108	104	92.2	83.8	56.6														
175	108	104	92.7	84.3	58.2														
180	106	102	92.2	83.8	55.8														

C Range: 0 - 360DEG
 C Interval: 15.0DEG
 Test Speed: HIGH
 Temperature: 25.3°C
 Operators: DAMIN
 Test Date: 2023-03-07

□ Range: 0 - 180DEG
 □ Interval: 1.0DEG
 Test System: EVERFINE GO-2000B_V1 SYSTEM V2.00.471
 Humidity: 65.0%
 Test Distance: 4.880m [K=1.0000]
 Remarks: