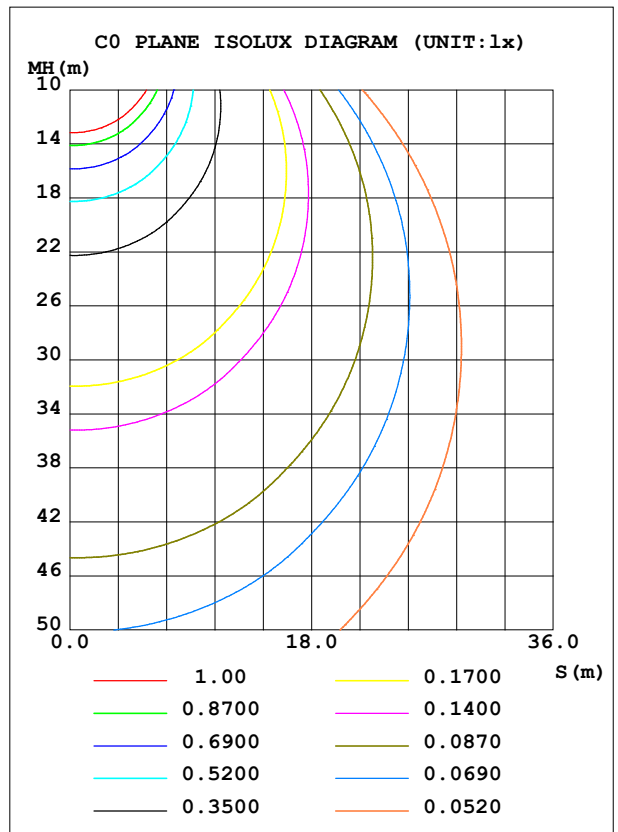
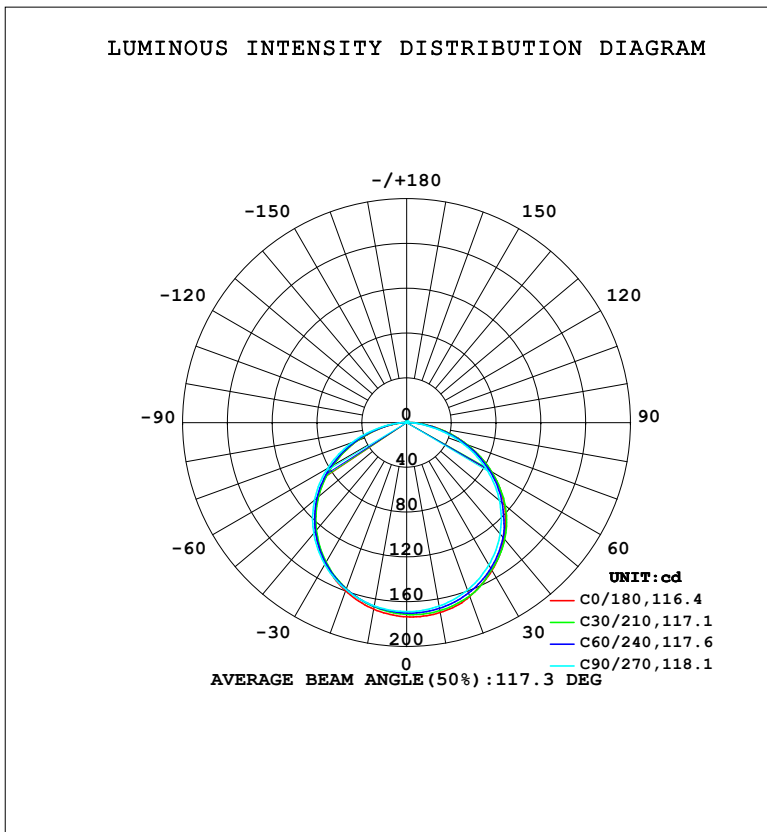


LUMINAIRE PHOTOMETRIC TEST REPORT

NAME: LED Strip	TYPE: Indoor lighting	WEIGHT: 20g
SPEC.: LED	DIM.: 500*5*1.2mm	SERIAL No.: 20230804010
MFR.: EVERFINE	SUR.: 500*5mm	Shielding Angle:

DATA OF LAMP		PHOTOMETRIC DATA			
MODEL: 10B-24 (WCP) (05) -UR-ME-EP		Imax (cd)	173.6	S/MH (C0/180)	1.25
NOMINAL POWER (W)	4.43635	LOR (%)	100.0	S/MH (C90/270)	1.29
RATED VOLTAGE (V)	DC 24	TOTAL FLUX (lm)	523.01	<input type="checkbox"/> UP, DN (C0-180)	0.7, 49.7
NOMINAL FLUX (lm)	523.015	CIE CLASS	DIRECT	<input type="checkbox"/> UP, DN (C180-360)	0.8, 48.8
LAMPS INSIDE	1	<input type="checkbox"/> up (%)	1.5	CIBSE SHR NOM	1.25
TEST VOLTAGE (V)	DC 24	<input type="checkbox"/> down (%)	98.5	CIBSE SHR MAX	1.35



C Range: 0 - 360DEG
 C Interval: 15.0DEG
 Test Speed: HIGH
 Temperature: 25.3°C
 Operators: DAMIN
 Test Date: 2023-08-04

Range: 0 - 180DEG
 Interval: 1.0DEG
 Test System: EVERFINE GO-2000B_V1 SYSTEM V2.00.471
 Humidity: 65.0%
 Test Distance: 4.880m [K=1.0000]
 Remarks:

ZONAL FLUX DIAGRAM

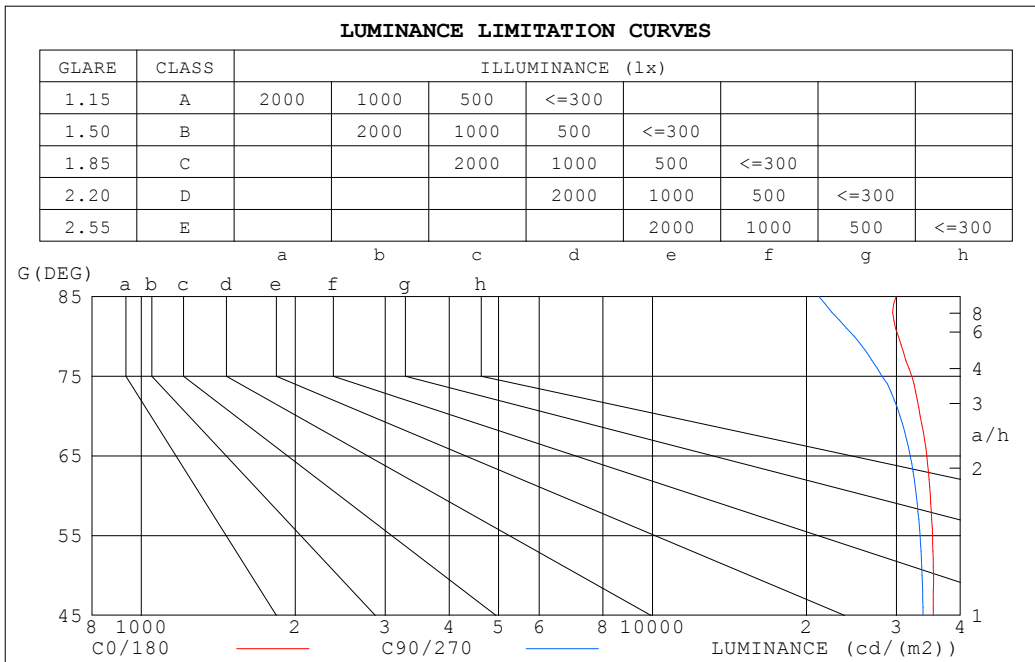
ZONAL FLUX DIAGRAM:

☐	C0	C45	C90	C135	C180	C225	C270	C315	☐	☐ zone	☐ total	%lum,lamp
10	172.3	169.7	166.4	166.1	169.2	166.6	166.2	168.2	0- 10	16.16	16.16	3.09,3.09
20	165.3	163.6	159.1	157.7	159.8	157.6	158.7	161.8	10- 20	46.55	62.71	12,12
30	152.4	151.1	146.8	144.5	145.4	143.8	146.3	149.9	20- 30	71.26	134.0	25.6,25.6
40	135.4	134.7	129.9	126.5	126.5	125.6	129.2	133.4	30- 40	87.24	221.2	42.3,42.3
50	113.9	113.6	108.2	104.2	103.3	103.0	107.4	111.2	40- 50	92.31	313.5	59.9,59.9
60	87.37	87.61	82.06	77.61	76.29	76.52	81.47	86.02	50- 60	85.28	398.8	76.3,76.3
70	57.10	57.18	52.11	47.82	46.30	47.15	51.85	56.70	60- 70	66.28	465.1	88.9,88.9
80	26.28	26.12	21.52	18.84	17.87	18.47	22.26	26.46	70- 80	38.37	503.5	96.3,96.3
90	4.292	3.931	1.613	2.669	2.325	2.851	2.747	2.426	80- 90	11.66	515.1	98.5,98.5
100	0.7136	0.6568	0.5979	0.7484	0.8255	0.9080	0.6582	1.249	90-100	1.643	516.8	98.8,98.8
110	0.7473	0.7746	0.7926	0.8371	0.8898	0.8711	0.8519	1.135	100-110	0.8271	517.6	99,99
120	0.9507	0.9793	1.009	1.025	1.082	1.067	1.072	1.016	110-120	0.9240	518.5	99.1,99.1
130	1.157	1.186	1.222	1.235	1.277	1.279	1.282	1.213	120-130	1.011	519.5	99.3,99.3
140	1.362	1.395	1.424	1.440	1.476	1.476	1.479	1.415	130-140	1.030	520.6	99.5,99.5
150	1.563	1.596	1.614	1.626	1.657	1.657	1.657	1.606	140-150	0.9587	521.5	99.7,99.7
160	1.761	1.773	1.777	1.794	1.829	1.814	1.813	1.772	150-160	0.7893	522.3	99.9,99.9
170	1.930	1.928	1.916	1.939	1.974	1.948	1.942	1.914	160-170	0.5273	522.8	100,100
180	2.037	2.024	2.010	2.012	2.035	2.016	2.012	2.010	170-180	0.1883	523.0	100,100
DEG	LUMINOUS INTENSITY:cd									UNIT:lm		

C Range: 0 - 360DEG
 C Interval: 15.0DEG
 Test Speed: HIGH
 Temperature:25.3°C
 Operators:DAMIN
 Test Date:2023-08-04

☐ Range: 0 - 180DEG
 ☐ Interval: 1.0DEG
 Test System:EVERFINE GO-2000B_V1 SYSTEM V2.00.471
 Humidity:65.0%
 Test Distance:4.880m [K=1.0000]
 Remarks:

LUMINANCE LIMITATION CURVES



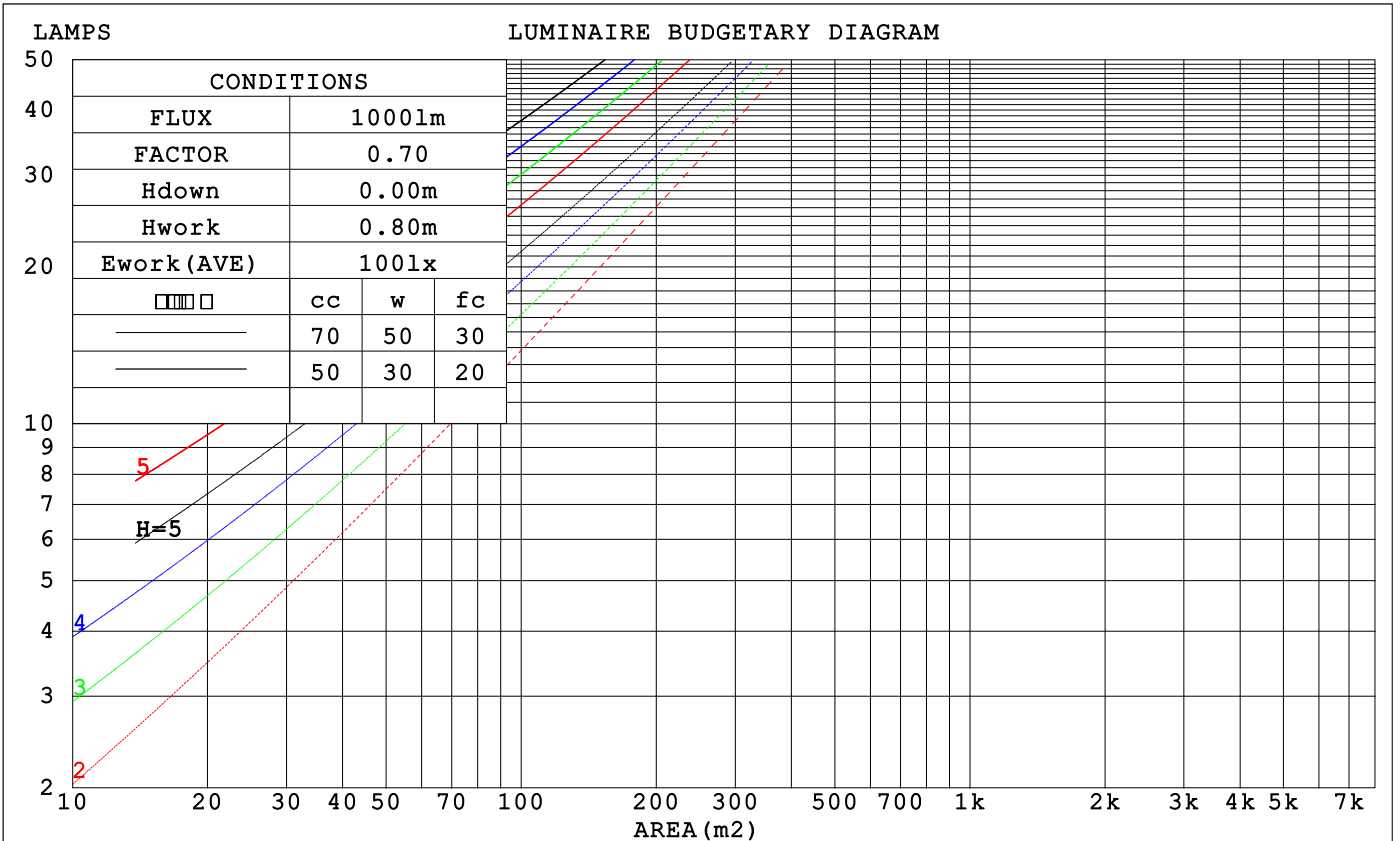
LUMINANCE cd/(m2)		
G (DEG)	C0/180	C90/270
85	29971	21167
80	30270	24788
75	32132	28102
70	33392	30472
65	34410	31939
60	34949	32823
55	35290	33358
50	35444	33674
45	35388	33832

C Range: 0 - 360DEG
 C Interval: 15.0DEG
 Test Speed: HIGH
 Temperature: 25.3°C
 Operators: DAMIN
 Test Date: 2023-08-04

Range: 0 - 180DEG
 Interval: 1.0DEG
 Test System: EVERFINE GO-2000B_V1 SYSTEM V2.00.471
 Humidity: 65.0%
 Test Distance: 4.880m [K=1.0000]
 Remarks:

CU AND LUMINAIRE BUDGETARY ESTIMATE DIAGRAM

□cc	80%			70%			50%			30%			10%			0
□w	50%	30%	10%	50%	30%	10%	50%	30%	10%	50%	30%	10%	50%	30%	10%	0
□fc	20%			20%			20%			20%			20%			0
RCR	RCR:Room Cavity Ratio			Coefficients of Utilization(CU)												
0.0	1.19	1.19	1.19	1.16	1.16	1.16	1.10	1.10	1.10	1.05	1.05	1.05	1.01	1.01	1.01	.98
1.0	1.03	.99	.95	1.01	.97	.93	.96	.93	.90	.92	.89	.87	.88	.86	.84	.82
2.0	.90	.83	.77	.87	.81	.76	.84	.78	.74	.80	.76	.72	.77	.73	.70	.68
3.0	.78	.70	.63	.77	.69	.63	.73	.67	.61	.70	.65	.60	.68	.63	.59	.57
4.0	.69	.60	.53	.68	.59	.53	.65	.58	.52	.63	.56	.51	.60	.55	.50	.48
5.0	.62	.53	.46	.60	.52	.45	.58	.51	.45	.56	.49	.44	.54	.48	.44	.41
6.0	.55	.46	.40	.54	.46	.40	.52	.45	.39	.51	.44	.39	.49	.43	.38	.36
7.0	.50	.41	.35	.49	.41	.35	.48	.40	.34	.46	.39	.34	.44	.38	.34	.32
8.0	.46	.37	.31	.45	.37	.31	.43	.36	.31	.42	.35	.30	.41	.35	.30	.28
9.0	.42	.34	.28	.41	.33	.28	.40	.33	.28	.39	.32	.27	.38	.32	.27	.25
10.0	.39	.31	.25	.38	.30	.25	.37	.30	.25	.36	.29	.25	.35	.29	.25	.23



C Range: 0 - 360DEG
 C Interval: 15.0DEG
 Test Speed: HIGH
 Temperature:25.3°C
 Operators:DAMIN
 Test Date:2023-08-04

□ Range: 0 - 180DEG
 □ Interval: 1.0DEG
 Test System:EVERFINE GO-2000B_V1 SYSTEM V2.00.471
 Humidity:65.0%
 Test Distance:4.880m [K=1.0000]
 Remarks:

WEC AND CCEC

□cc	80%			70%			50%			30%			10%			0
□w	50%	30%	10%	50%	30%	10%	50%	30%	10%	50%	30%	10%	50%	30%	10%	0
□fc	20%			20%			20%			20%			20%			0
RCR	RCR:Room Cavity Ratio						Wall Exitance Coefficients(WEC)									
0.0	.317	.181	.057	.310	.177	.056	.296	.170	.054	.283	.163	.052	.271	.157	.051	
1.0	.297	.163	.050	.290	.160	.049	.278	.155	.048	.266	.149	.047	.256	.145	.046	
2.0	.274	.146	.044	.268	.144	.043	.257	.139	.042	.247	.135	.041	.237	.131	.041	
3.0	.252	.131	.039	.247	.129	.038	.237	.126	.038	.228	.122	.037	.220	.119	.036	
4.0	.233	.119	.034	.228	.117	.034	.219	.114	.034	.211	.111	.033	.204	.109	.033	
5.0	.216	.108	.031	.212	.107	.031	.204	.104	.030	.196	.102	.030	.189	.100	.030	
6.0	.201	.099	.028	.197	.098	.028	.190	.096	.028	.183	.094	.027	.177	.092	.027	
7.0	.187	.091	.026	.184	.091	.026	.177	.089	.025	.171	.087	.025	.166	.085	.025	
8.0	.175	.085	.024	.172	.084	.024	.167	.082	.023	.161	.081	.023	.156	.079	.023	
9.0	.165	.079	.022	.162	.078	.022	.157	.077	.022	.152	.075	.021	.147	.074	.021	
10.0	.165	.079	.022	.162	.078	.022	.157	.077	.022	.152	.075	.021	.147	.074	.021	

□cc	80%			70%			50%			30%			10%			0
□w	50%	30%	10%	50%	30%	10%	50%	30%	10%	50%	30%	10%	50%	30%	10%	0
□fc	20%			20%			20%			20%			20%			0
RCR	RCR:Room Cavity Ratio						Ceiling Cavity Exitance Coefficients(CCEC)									
0.0	.202	.202	.202	.173	.173	.173	.118	.118	.118	.068	.068	.068	.022	.022	.022	
1.0	.192	.168	.145	.165	.144	.125	.113	.099	.087	.065	.057	.050	.021	.018	.016	
2.0	.185	.144	.109	.158	.124	.094	.108	.085	.066	.062	.050	.039	.020	.016	.013	
3.0	.177	.126	.085	.152	.109	.074	.104	.076	.052	.060	.044	.031	.019	.014	.010	
4.0	.169	.113	.070	.145	.098	.060	.100	.068	.043	.058	.040	.025	.019	.013	.008	
5.0	.162	.103	.059	.139	.089	.051	.096	.062	.036	.056	.036	.021	.018	.012	.007	
6.0	.155	.094	.051	.133	.082	.044	.092	.057	.031	.053	.034	.019	.017	.011	.006	
7.0	.148	.087	.045	.127	.076	.039	.088	.053	.028	.051	.031	.016	.017	.010	.005	
8.0	.141	.082	.040	.122	.071	.035	.084	.050	.025	.049	.029	.015	.016	.010	.005	
9.0	.135	.077	.037	.117	.067	.032	.081	.047	.023	.047	.028	.014	.015	.009	.005	
10.0	.130	.072	.034	.112	.063	.030	.078	.044	.021	.045	.026	.013	.015	.009	.004	

C Range: 0 - 360DEG
 C Interval: 15.0DEG
 Test Speed: HIGH
 Temperature:25.3°C
 Operators:DAMIN
 Test Date:2023-08-04

□ Range: 0 - 180DEG
 □ Interval: 1.0DEG
 Test System:EVERFINE GO-2000B_V1 SYSTEM V2.00.471
 Humidity:65.0%
 Test Distance:4.880m [K=1.0000]
 Remarks:

UGR(Unified Glare Rating) Table

ceiling/cavity	0.7	0.7	0.5	0.5	0.3	0.7	0.7	0.5	0.5	0.3
walls	0.5	0.3	0.5	0.3	0.3	0.5	0.3	0.5	0.3	0.3
working plane	0.2	0.2	0.2	0.2	0.2	0.2	0.2	0.2	0.2	0.2
Room dimensions	Viewed crosswise					Viewed endwise				
x = 2H y = 2H	27.7	29.3	28.0	29.5	29.7	27.5	29.0	27.8	29.2	29.5
3H	29.4	30.8	29.7	31.1	31.4	29.1	30.5	29.4	30.7	31.0
4H	30.1	31.5	30.5	31.7	32.0	29.7	31.0	30.0	31.3	31.6
6H	30.6	31.9	31.0	32.2	32.5	30.1	31.4	30.5	31.7	32.0
8H	30.8	32.0	31.2	32.4	32.7	30.3	31.5	30.6	31.8	32.1
12H	31.0	32.1	31.3	32.5	32.8	30.3	31.5	30.7	31.8	32.2
4H 2H	28.4	29.7	28.7	30.0	30.3	28.2	29.5	28.5	29.8	30.1
3H	30.3	31.4	30.6	31.7	32.1	30.0	31.1	30.3	31.5	31.8
4H	31.1	32.2	31.5	32.5	32.9	30.7	31.8	31.1	32.1	32.5
6H	31.8	32.7	32.2	33.1	33.5	31.3	32.2	31.7	32.6	33.0
8H	32.0	32.9	32.4	33.3	33.7	31.5	32.3	31.9	32.7	33.2
12H	32.2	33.0	32.7	33.4	33.9	31.6	32.4	32.0	32.8	33.3
8H 4H	31.4	32.3	31.8	32.7	33.1	31.1	31.9	31.5	32.3	32.8
6H	32.2	33.0	32.7	33.4	33.8	31.8	32.5	32.3	33.0	33.4
8H	32.6	33.2	33.1	33.7	34.2	32.1	32.7	32.5	33.2	33.7
12H	32.9	33.4	33.4	33.9	34.4	32.3	32.8	32.8	33.3	33.8
12H 4H	31.4	32.2	31.8	32.6	33.1	31.1	31.9	31.5	32.3	32.8
6H	32.3	32.9	32.8	33.4	33.9	31.9	32.5	32.4	33.0	33.5
8H	32.7	33.2	33.2	33.7	34.2	32.2	32.8	32.7	33.2	33.7
Variations with the observer position at spacings(CIE Pub.117):										
S = 1.0H	+ 0.1 / - 0.2					+ 0.1 / - 0.2				
1.5H	+ 0.2 / - 0.3					+ 0.2 / - 0.3				
2.0H	+ 0.2 / - 0.4					+ 0.2 / - 0.4				

CIE Pub.117, 523.0 lm Total Lamp Luminous Flux Correct (8log(F/F0) = -2.3)
 Area: 0.005 m2

C Range: 0 - 360DEG
 C Interval: 15.0DEG
 Test Speed: HIGH
 Temperature:25.3°C
 Operators:DAMIN
 Test Date:2023-08-04

Range: 0 - 180DEG
 Interval: 1.0DEG
 Test System:EVERFINE GO-2000B_V1 SYSTEM V2.00.471
 Humidity:65.0%
 Test Distance:4.880m [K=1.0000]
 Remarks:

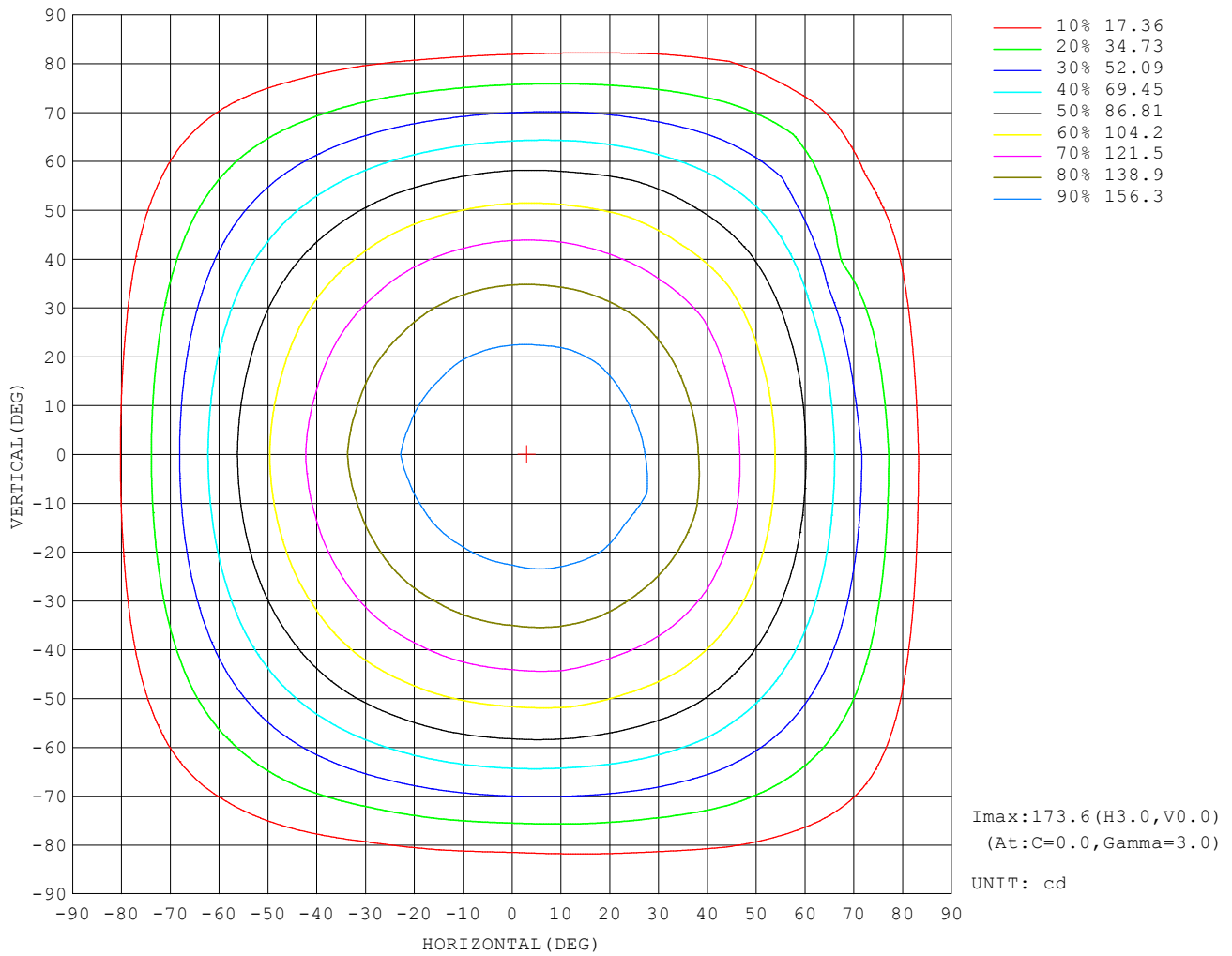
UTILIZATION FACTORS TABLE

REFLECTANCE										
Ceiling	0.8	0.8	0.8	0.7	0.7	0.7	0.5	0.5	0.5	0
Walls	0.7	0.5	0.3	0.7	0.5	0.3	0.7	0.5	0.3	0
Working plane	0.2	0.2	0.2	0.2	0.2	0.2	0.2	0.2	0.2	0
ROOM INDEX	UTILIZATION FACTORS (PERCENT) $k(RI) \times RCR = 5$									
$k = 0.60$	56	44	37	55	44	37	54	44	37	30
0.80	66	54	47	65	54	47	63	53	46	39
1.00	75	63	56	73	63	55	71	64	55	47
1.25	82	71	64	80	70	63	77	69	62	55
1.50	87	77	69	85	76	69	82	74	68	60
2.00	94	85	78	92	84	77	88	81	76	68
2.50	98	90	84	96	88	83	92	85	81	72
3.00	101	94	88	99	92	87	95	89	85	76
4.00	105	99	95	103	98	93	98	94	90	81
5.00	108	103	99	105	101	97	101	97	94	84
ROOM INDEX	UF (total)									Direct
According to DIN EN 13032-2 2004			Suspended				SHRNOM = 1.25			

C Range: 0 - 360DEG
 C Interval: 15.0DEG
 Test Speed: HIGH
 Temperature: 25.3°C
 Operators: DAMIN
 Test Date: 2023-08-04

Range: 0 - 180DEG
 Interval: 1.0DEG
 Test System: EVERFINE GO-2000B_V1 SYSTEM V2.00.471
 Humidity: 65.0%
 Test Distance: 4.880m [K=1.0000]
 Remarks:

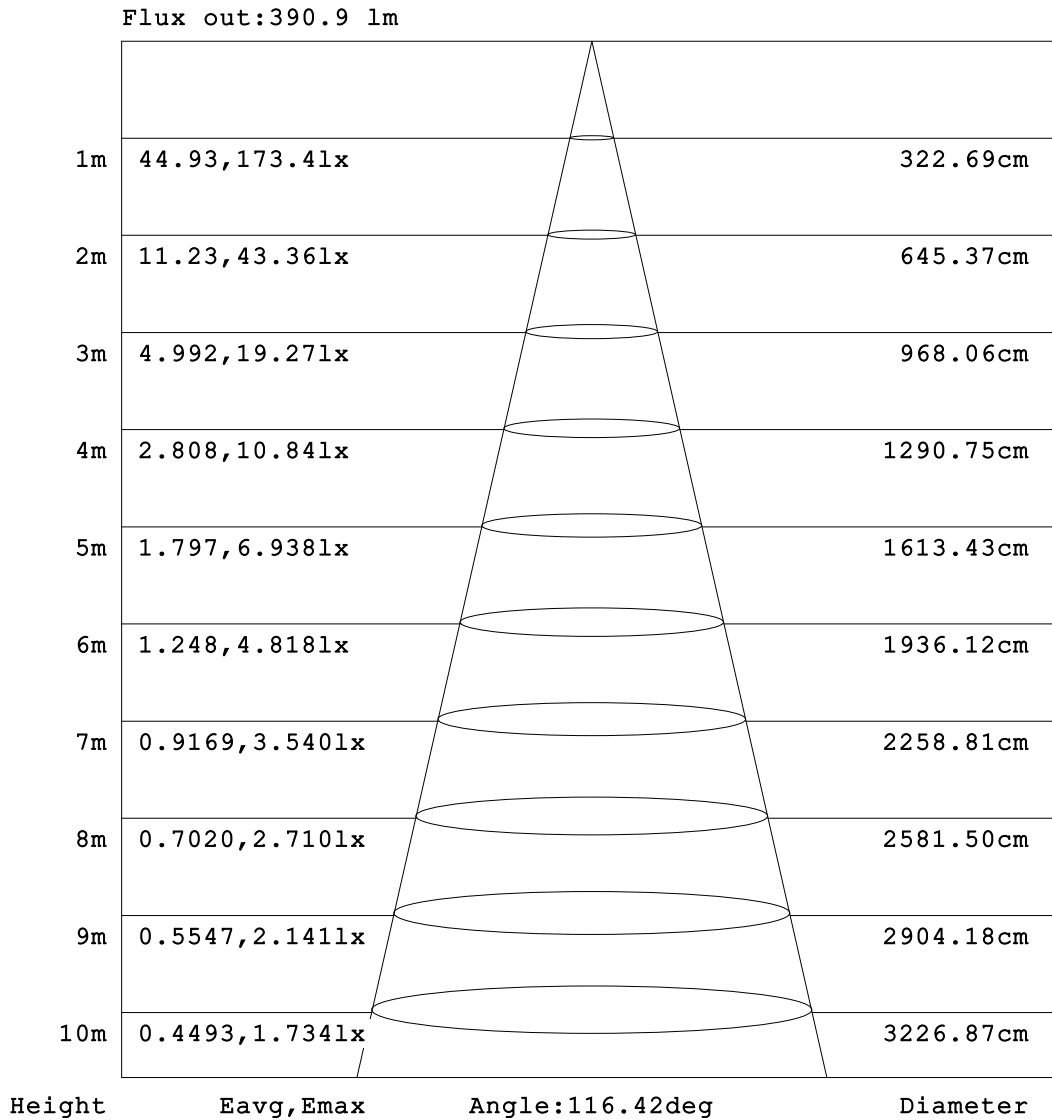
ISOCANDELA DIAGRAM



C Range: 0 - 360DEG
 C Interval: 15.0DEG
 Test Speed: HIGH
 Temperature: 25.3°C
 Operators: DAMIN
 Test Date: 2023-08-04

Range: 0 - 180DEG
 Interval: 1.0DEG
 Test System: EVERFINE GO-2000B_V1 SYSTEM V2.00.471
 Humidity: 65.0%
 Test Distance: 4.880m [K=1.0000]
 Remarks:

AAI Figure

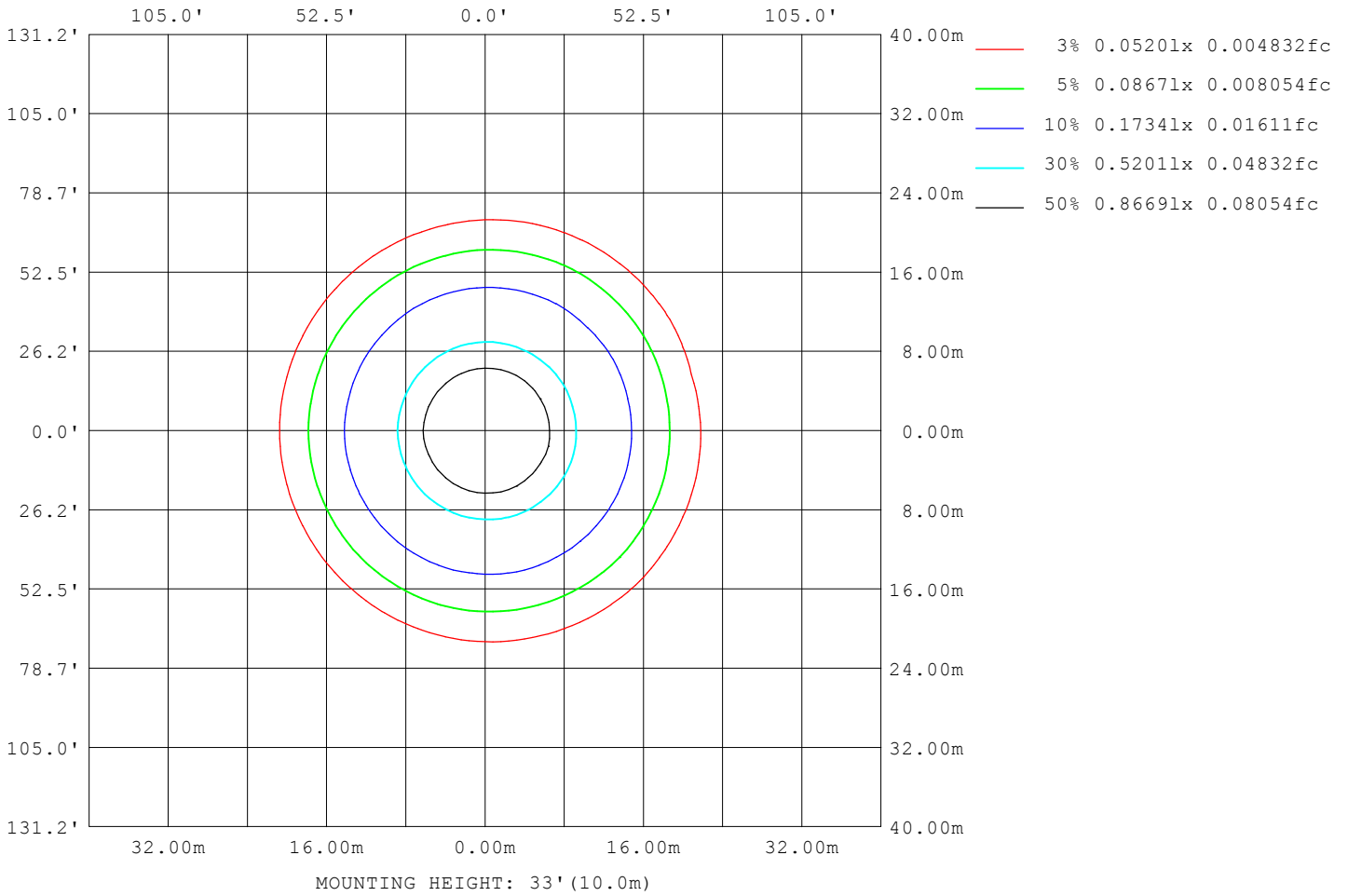


Note:The Curves indicate the illuminated area and the average illumination when the luminaire is at different distance.

C Range: 0 - 360DEG
 C Interval: 15.0DEG
 Test Speed: HIGH
 Temperature:25.3°C
 Operators:DAMIN
 Test Date:2023-08-04

Range: 0 - 180DEG
 Interval: 1.0DEG
 Test System:EVERFINE GO-2000B_V1 SYSTEM V2.00.471
 Humidity:65.0%
 Test Distance:4.880m [K=1.0000]
 Remarks:

ISOLUX DIAGRAM



C Range: 0 - 360DEG
 C Interval: 15.0DEG
 Test Speed: HIGH
 Temperature: 25.3°C
 Operators: DAMIN
 Test Date: 2023-08-04

Range: 0 - 180DEG
 Interval: 1.0DEG
 Test System: EVERFINE GO-2000B_V1 SYSTEM V2.00.471
 Humidity: 65.0%
 Test Distance: 4.880m [K=1.0000]
 Remarks:

LED Avg.L Report

NAME: LED Strip	TYPE: Indoor lighting	WEIGHT: 20g
SPEC.: LED	DIM.: 500*5*1.2mm	SERIAL No.: 20230804010
MFR.: EVERFINE	SUR.: 500*5mm	Shielding Angle:

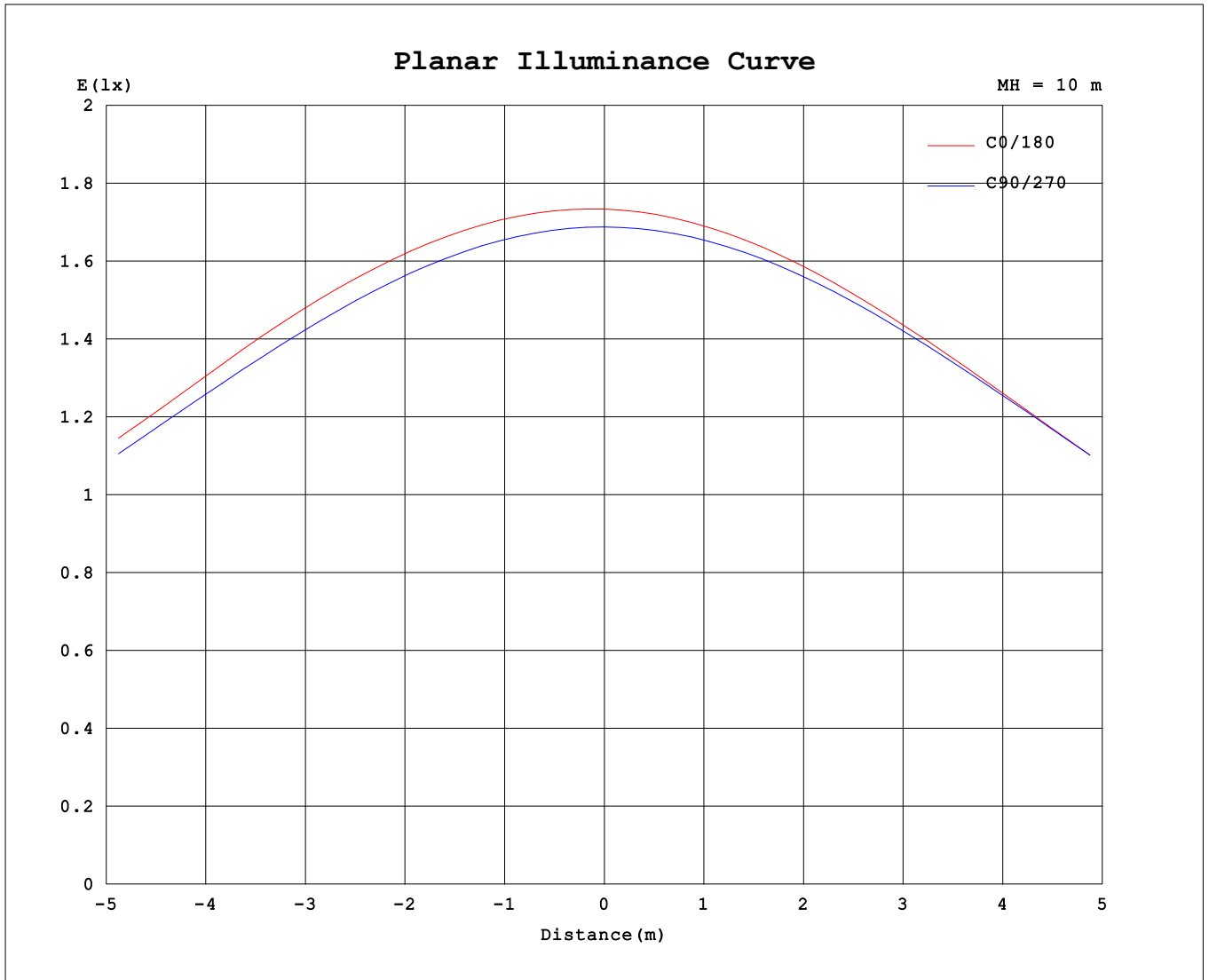
AvgL	cd/m2
L_0~180 (65) av	31728
L_0~180 (75) av	28226
L_0~180 (85) av	23688
L_90~270 (65) av	31800
L_90~270 (75) av	28231
L_90~270 (85) av	22303
L_45 (65) av	31882
L_45 (75) av	28553
L_45 (85) av	23595

Standard: GB/T 29293-2012

C Range: 0 - 360DEG
 C Interval: 15.0DEG
 Test Speed: HIGH
 Temperature:25.3℃
 Operators:DAMIN
 Test Date:2023-08-04

Range: 0 - 180DEG
 Interval: 1.0DEG
 Test System:EVERFINE GO-2000B_V1 SYSTEM V2.00.471
 Humidity:65.0%
 Test Distance:4.880m [K=1.0000]
 Remarks:

Planar Illuminance Curve



C Range: 0 - 360DEG
 C Interval: 15.0DEG
 Test Speed: HIGH
 Temperature: 25.3°C
 Operators: DAMIN
 Test Date: 2023-08-04

Range: 0 - 180DEG
 Interval: 1.0DEG
 Test System: EVERFINE GO-2000B_V1 SYSTEM V2.00.471
 Humidity: 65.0%
 Test Distance: 4.880m [K=1.0000]
 Remarks:

LUMINOUS DISTRIBUTION INTENSITY DATA

Table--1

UNIT: cd

C (DEG) \ □ (DEG)	0	15	30	45	60	75	90	105	120	135	150	165	180	195	210	225	240	255	270
0	173	173	171	171	170	169	169	169	169	170	171	172	173	173	171	171	170	169	169
5	173	173	172	171	170	169	168	168	168	168	169	171	172	171	170	169	169	169	168
10	172	172	171	170	168	168	166	166	166	166	167	168	169	168	167	167	167	166	166
15	170	170	168	167	166	165	163	163	162	163	163	164	165	164	163	163	163	163	163
20	165	166	165	164	162	161	159	158	158	158	158	158	160	158	158	158	158	158	159
25	159	161	159	159	157	155	154	153	152	152	151	152	153	152	151	151	152	153	153
30	152	154	152	151	150	149	147	146	145	144	144	144	145	144	144	144	145	145	146
35	145	147	145	143	143	141	139	138	137	136	135	135	137	135	135	135	136	137	138
40	135	137	136	135	134	132	130	129	127	127	126	126	126	125	125	126	127	128	129
45	125	127	126	125	123	122	120	118	117	116	115	115	115	114	114	115	116	117	119
50	114	115	115	114	111	111	108	107	105	104	103	103	103	102	103	103	104	106	107
55	101	102	102	101	99.2	98.4	95.7	94.2	92.4	91.3	89.9	89.8	90.2	89.4	89.7	90.2	91.7	93.0	94.9
60	87.4	88.0	87.7	87.6	85.5	83.8	82.1	80.6	78.7	77.6	76.2	76.0	76.3	75.6	76.1	76.5	78.1	79.4	81.5
65	72.7	73.2	72.9	72.8	71.1	69.0	67.5	65.8	64.2	62.7	61.7	61.1	61.4	61.0	61.4	62.1	63.4	65.0	66.9
70	57.1	57.6	57.4	57.2	55.6	53.8	52.1	50.7	48.9	47.8	46.6	46.2	46.3	46.0	46.4	47.1	48.5	50.0	51.8
75	41.6	41.9	41.8	41.4	39.8	38.2	36.4	35.3	33.6	32.8	31.6	31.4	31.5	31.1	31.7	32.2	33.7	34.9	36.7
80	26.3	26.7	26.4	26.1	24.4	23.2	21.5	20.8	19.4	18.8	18.0	17.8	17.9	17.6	18.1	18.5	19.9	20.8	22.3
85	13.1	13.4	13.0	12.8	11.4	10.5	9.22	9.00	8.24	8.09	7.66	7.65	7.58	7.45	7.72	7.84	8.72	9.59	10.2
90	4.29	4.49	4.17	3.93	3.15	2.57	1.61	2.43	2.55	2.67	2.65	2.65	2.33	2.44	2.66	2.85	3.28	3.45	2.75
95	1.37	1.44	1.33	1.15	0.83	0.61	0.59	0.66	1.01	1.30	1.51	1.58	1.50	1.63	1.75	1.80	2.01	1.60	0.64
100	0.71	0.70	0.68	0.66	0.65	0.62	0.60	0.64	0.68	0.75	0.82	0.89	0.83	0.81	0.77	0.91	0.76	0.70	0.66
105	0.67	0.68	0.68	0.69	0.68	0.69	0.68	0.70	0.72	0.75	0.75	0.78	0.80	0.78	0.79	0.78	0.78	0.76	0.74
110	0.75	0.76	0.75	0.77	0.78	0.79	0.79	0.81	0.80	0.84	0.83	0.84	0.89	0.88	0.89	0.87	0.86	0.85	0.85
115	0.85	0.86	0.86	0.88	0.88	0.90	0.90	0.91	0.91	0.93	0.93	0.93	0.98	0.98	0.99	0.97	0.97	0.96	0.96
120	0.95	0.96	0.96	0.98	0.98	1.01	1.01	1.02	1.01	1.02	1.02	1.03	1.08	1.08	1.08	1.07	1.07	1.07	1.07
125	1.05	1.06	1.06	1.08	1.09	1.11	1.11	1.13	1.12	1.13	1.12	1.12	1.18	1.17	1.18	1.17	1.18	1.17	1.18
130	1.16	1.17	1.17	1.19	1.19	1.21	1.22	1.23	1.22	1.24	1.22	1.22	1.28	1.28	1.29	1.28	1.29	1.28	1.28
135	1.26	1.27	1.27	1.29	1.29	1.32	1.32	1.34	1.33	1.34	1.32	1.32	1.38	1.37	1.39	1.38	1.39	1.38	1.38
140	1.36	1.38	1.38	1.39	1.40	1.42	1.42	1.44	1.43	1.44	1.43	1.43	1.48	1.48	1.48	1.48	1.48	1.48	1.48
145	1.46	1.49	1.48	1.50	1.50	1.52	1.52	1.53	1.52	1.54	1.52	1.53	1.57	1.56	1.58	1.57	1.58	1.57	1.57
150	1.56	1.59	1.58	1.60	1.59	1.61	1.61	1.63	1.61	1.63	1.62	1.64	1.66	1.65	1.66	1.66	1.67	1.65	1.66
155	1.66	1.69	1.68	1.69	1.68	1.70	1.70	1.71	1.70	1.71	1.70	1.73	1.74	1.73	1.75	1.74	1.75	1.73	1.74
160	1.76	1.78	1.76	1.77	1.76	1.78	1.78	1.80	1.78	1.79	1.78	1.81	1.83	1.81	1.82	1.81	1.82	1.81	1.81
165	1.85	1.86	1.85	1.85	1.84	1.86	1.85	1.87	1.86	1.87	1.86	1.89	1.91	1.88	1.90	1.88	1.89	1.88	1.88
170	1.93	1.94	1.92	1.93	1.92	1.93	1.92	1.93	1.92	1.94	1.93	1.96	1.97	1.95	1.96	1.95	1.95	1.93	1.94
175	1.99	2.00	1.98	1.99	1.97	1.99	1.97	1.98	1.97	1.99	1.99	2.02	2.02	1.99	2.01	1.99	2.00	1.98	1.99
180	2.04	2.03	2.02	2.02	2.01	2.01	2.01	2.01	2.01	2.01	2.01	2.05	2.04	2.03	2.03	2.02	2.02	2.01	2.01

C Range: 0 - 360DEG
 C Interval: 15.0DEG
 Test Speed: HIGH
 Temperature: 25.3°C
 Operators: DAMIN
 Test Date: 2023-08-04

□ Range: 0 - 180DEG
 □ Interval: 1.0DEG
 Test System: EVERFINE GO-2000B_V1 SYSTEM V2.00.471
 Humidity: 65.0%
 Test Distance: 4.880m [K=1.0000]
 Remarks:

LUMINOUS DISTRIBUTION INTENSITY DATA

Table--2

UNIT: cd

C (DEG) □ (DEG)	285	300	315	330	345														
0	169	169	170	171	172														
5	168	169	169	171	172														
10	166	167	168	170	171														
15	164	165	166	167	169														
20	159	161	162	163	164														
25	154	155	157	157	158														
30	147	149	150	150	151														
35	139	141	142	143	144														
40	130	131	133	135	135														
45	120	121	123	125	124														
50	109	110	111	114	113														
55	96.2	98.9	99.0	101	101														
60	83.1	85.6	86.0	87.3	87.0														
65	69.0	70.6	71.8	72.6	70.5														
70	54.0	55.2	56.7	57.4	49.5														
75	38.6	40.0	41.4	42.1	29.4														
80	23.8	25.3	26.5	24.0	19.5														
85	11.3	12.7	12.4	9.48	6.38														
90	3.42	3.85	2.43	3.03	3.55														
95	0.80	1.69	1.84	1.55	1.40														
100	0.71	1.43	1.25	0.88	0.76														
105	0.73	1.01	1.41	0.91	0.76														
110	0.84	0.84	1.14	0.97	0.85														
115	0.94	0.94	0.99	0.99	0.94														
120	1.05	1.03	1.02	1.04	1.04														
125	1.15	1.14	1.12	1.12	1.13														
130	1.25	1.24	1.21	1.21	1.23														
135	1.36	1.35	1.32	1.32	1.32														
140	1.45	1.44	1.42	1.42	1.43														
145	1.54	1.54	1.51	1.51	1.53														
150	1.64	1.63	1.61	1.61	1.63														
155	1.72	1.72	1.69	1.70	1.72														
160	1.79	1.79	1.77	1.78	1.81														
165	1.86	1.87	1.85	1.86	1.89														
170	1.92	1.94	1.91	1.93	1.96														
175	1.97	1.98	1.97	1.99	2.02														
180	2.01	2.01	2.01	2.01	2.05														

C Range: 0 - 360DEG
 C Interval: 15.0DEG
 Test Speed: HIGH
 Temperature:25.3°C
 Operators:DAMIN
 Test Date:2023-08-04

□ Range: 0 - 180DEG
 □ Interval: 1.0DEG
 Test System:EVERFINE GO-2000B_V1 SYSTEM V2.00.471
 Humidity:65.0%
 Test Distance:4.880m [K=1.0000]
 Remarks: