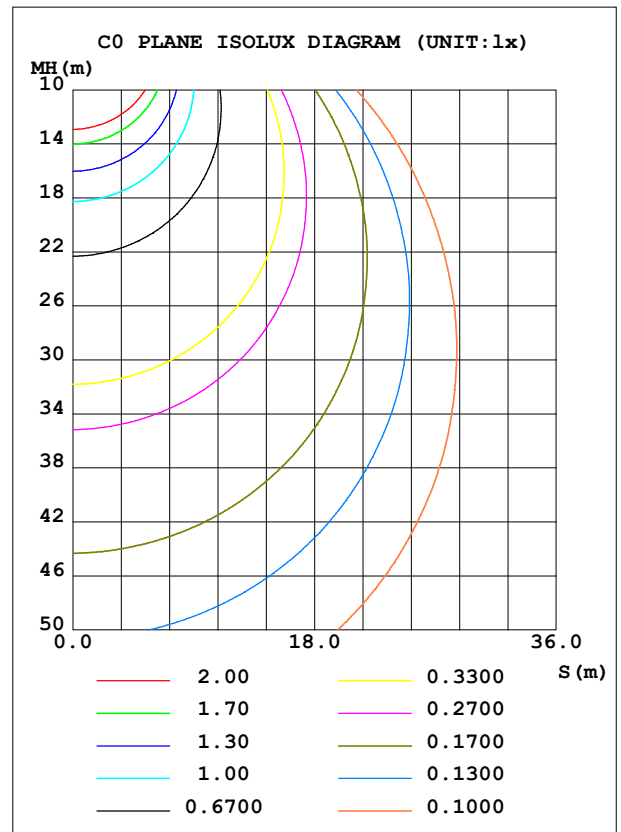
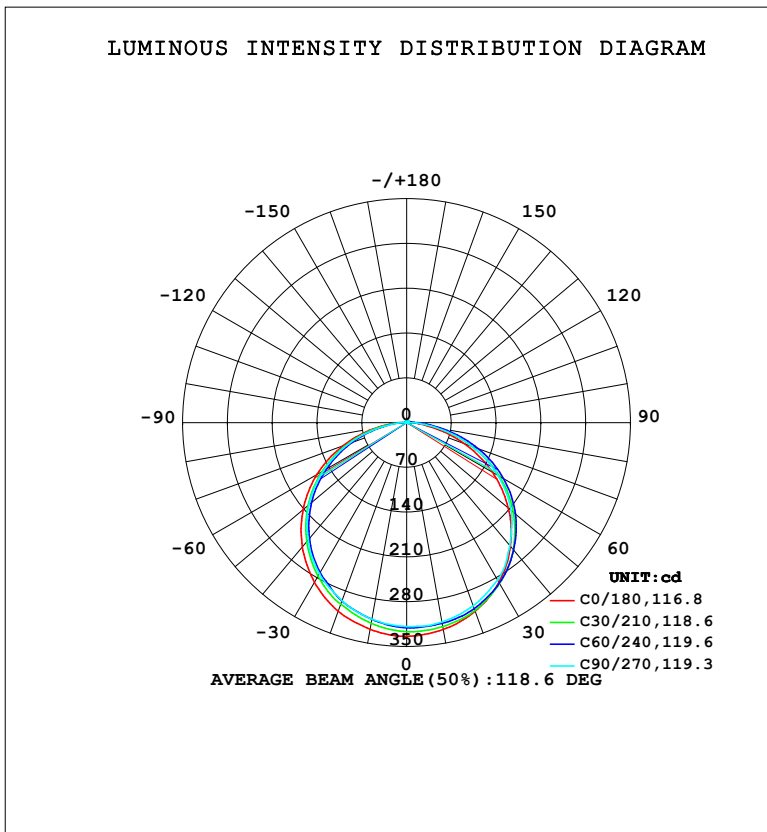


LUMINAIRE PHOTOMETRIC TEST REPORT

NAME: LED Strip	TYPE: Indoor lighting	WEIGHT: 20g
SPEC.: LED	DIM.: 1000*3.5*1.2mm	SERIAL No.: 20230804001
MFR.: EVERFINE	SUR.: 1000*3.5mm	Shielding Angle:

DATA OF LAMP		PHOTOMETRIC DATA			
MODEL: WW140B-24 (WCP) -UR-ME-EP		Imax (cd)	333.9	S/MH (C0/180)	1.28
NOMINAL POWER (W)	8.8194	LOR (%)	100.0	S/MH (C90/270)	1.27
RATED VOLTAGE (V)	DC 24	TOTAL FLUX (lm)	1021.1	<input type="checkbox"/> UP, DN (C0-180)	0.9, 48.6
NOMINAL FLUX (lm)	1021.1	CIE CLASS	DIRECT	<input type="checkbox"/> UP, DN (C180-360)	1.1, 49.5
LAMPS INSIDE	1	<input type="checkbox"/> up (%)	2.0	CIBSE SHR NOM	1.25
TEST VOLTAGE (V)	DC 24	<input type="checkbox"/> down (%)	98.0	CIBSE SHR MAX	1.35



C Range: 0 - 360DEG
 C Interval: 15.0DEG
 Test Speed: HIGH
 Temperature: 25.3°C
 Operators: DAMIN
 Test Date: 2023-08-04

Range: 0 - 180DEG
 Interval: 1.0DEG
 Test System: EVERFINE GO-2000B_V1 SYSTEM V2.00.471
 Humidity: 65.0%
 Test Distance: 4.880m [K=1.0000]
 Remarks:

ZONAL FLUX DIAGRAM

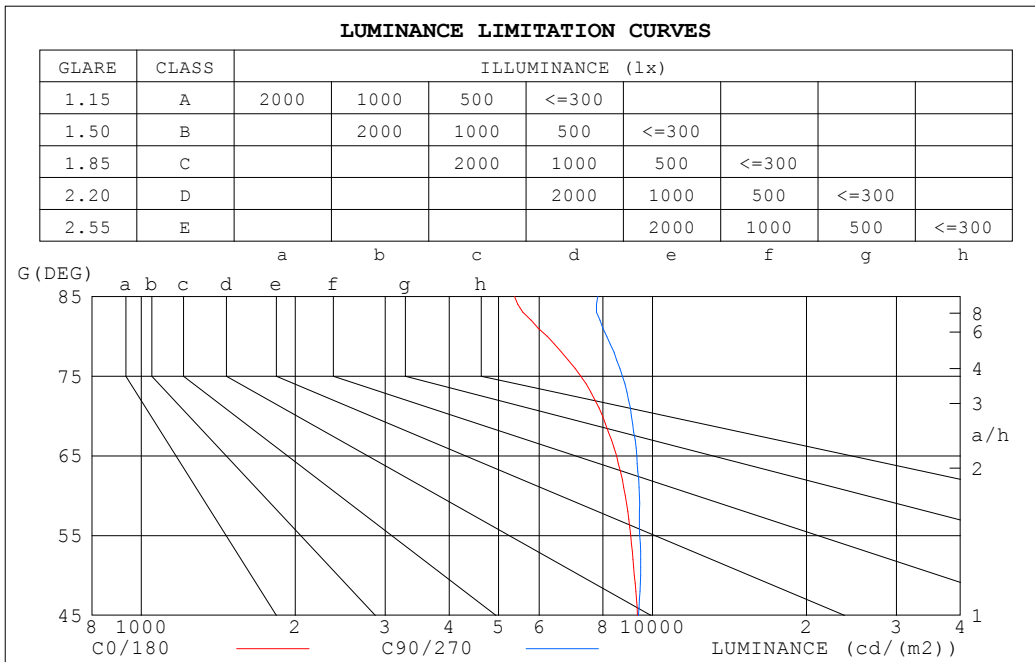
ZONAL FLUX DIAGRAM:

°	C0	C45	C90	C135	C180	C225	C270	C315	°	□ zone	□ total	%lum, lamp
10	328.3	319.6	316.5	309.8	328.0	312.9	311.9	317.1	0- 10	30.52	30.52	2.99,2.99
20	313.7	309.1	304.5	293.3	313.6	296.6	295.9	307.0	10- 20	87.96	118.5	11.6,11.6
30	288.3	289.7	284.1	268.0	288.1	271.3	272.9	289.0	20- 30	135.3	253.7	24.9,24.9
40	252.4	260.5	250.7	234.2	253.7	236.9	239.5	260.8	30- 40	166.3	420.0	41.1,41.1
50	207.3	220.5	213.2	192.3	211.4	195.1	199.4	224.2	40- 50	176.8	596.8	58.5,58.5
60	154.9	170.7	165.0	144.4	161.7	146.7	150.1	178.8	50- 60	165.0	761.9	74.6,74.6
70	95.54	113.8	108.9	92.46	106.0	93.64	95.57	123.8	60- 70	131.1	893.0	87.5,87.5
80	37.84	54.89	49.42	40.27	49.00	41.36	38.69	67.31	70- 80	79.92	972.9	95.3,95.3
90	5.383	16.73	5.421	3.943	9.127	7.216	2.962	22.17	80- 90	27.89	1001	98,98
100	2.917	7.197	1.293	1.691	1.888	1.735	1.440	9.747	90-100	5.741	1007	98.6,98.6
110	1.609	5.243	1.555	1.887	1.791	1.882	1.832	1.969	100-110	3.473	1010	98.9,98.9
120	1.965	1.944	1.911	2.153	2.063	2.213	2.250	2.154	110-120	2.089	1012	99.1,99.1
130	2.341	2.258	2.287	2.510	2.384	2.588	2.608	2.491	120-130	2.034	1014	99.3,99.3
140	2.710	2.622	2.666	2.859	2.750	2.941	2.948	2.856	130-140	2.035	1016	99.5,99.5
150	3.073	2.990	3.817	3.177	3.112	3.250	3.254	3.221	140-150	1.888	1018	99.7,99.7
160	3.431	4.267	3.842	3.463	3.462	3.512	3.518	3.553	150-160	1.588	1020	99.9,99.9
170	3.734	3.694	3.810	3.836	3.765	3.720	3.732	3.861	160-170	1.042	1021	100,100
180	3.912	3.832	3.859	4.025	3.912	3.814	3.838	4.010	170-180	0.3660	1021	100,100
DEG	LUMINOUS INTENSITY:cd									UNIT:lm		

C Range: 0 - 360DEG
 C Interval: 15.0DEG
 Test Speed: HIGH
 Temperature:25.3°C
 Operators:DAMIN
 Test Date:2023-08-04

□ Range: 0 - 180DEG
 □ Interval: 1.0DEG
 Test System:EVERFINE GO-2000B_V1 SYSTEM V2.00.471
 Humidity:65.0%
 Test Distance:4.880m [K=1.0000]
 Remarks:

LUMINANCE LIMITATION CURVES



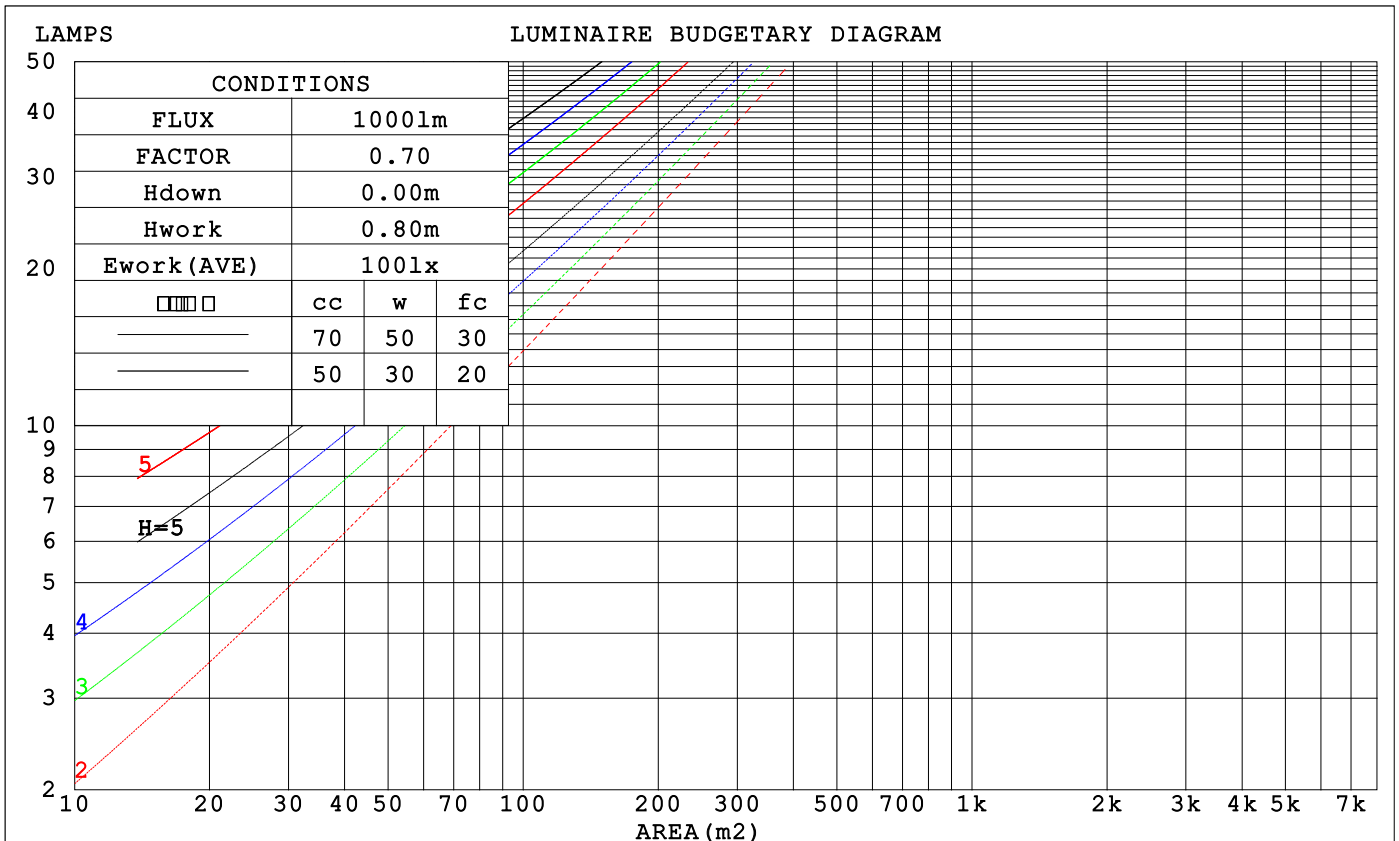
LUMINANCE cd/(m2)		
G (DEG)	C0/180	C90/270
85	5371	7809
80	6225	8131
75	7237	8734
70	7981	9097
65	8502	9316
60	8851	9430
55	9062	9443
50	9216	9476
45	9339	9389

C Range: 0 - 360DEG
 C Interval: 15.0DEG
 Test Speed: HIGH
 Temperature: 25.3°C
 Operators: DAMIN
 Test Date: 2023-08-04

Range: 0 - 180DEG
 Interval: 1.0DEG
 Test System: EVERFINE GO-2000B_V1 SYSTEM V2.00.471
 Humidity: 65.0%
 Test Distance: 4.880m [K=1.0000]
 Remarks:

CU AND LUMINAIRE BUDGETARY ESTIMATE DIAGRAM

□cc	80%			70%			50%			30%			10%			0
□w	50%	30%	10%	50%	30%	10%	50%	30%	10%	50%	30%	10%	50%	30%	10%	0
□fc	20%			20%			20%			20%			20%			0
RCR	RCR:Room Cavity Ratio			Coefficients of Utilization(CU)												
0.0	1.19	1.19	1.19	1.16	1.16	1.16	1.10	1.10	1.10	1.05	1.05	1.05	1.00	1.00	1.00	.98
1.0	1.03	.98	.94	1.00	.96	.92	.95	.92	.89	.91	.88	.86	.87	.85	.83	.81
2.0	.89	.82	.76	.87	.80	.75	.83	.77	.73	.79	.75	.71	.76	.72	.69	.66
3.0	.78	.69	.62	.76	.68	.62	.73	.66	.60	.70	.64	.59	.67	.62	.58	.55
4.0	.69	.59	.53	.67	.59	.52	.64	.57	.51	.62	.55	.50	.59	.54	.49	.47
5.0	.61	.52	.45	.60	.51	.45	.57	.50	.44	.55	.49	.43	.53	.47	.43	.40
6.0	.55	.46	.39	.54	.45	.39	.52	.44	.38	.50	.43	.38	.48	.42	.37	.35
7.0	.50	.41	.34	.49	.40	.34	.47	.39	.34	.45	.38	.33	.44	.38	.33	.31
8.0	.45	.36	.31	.44	.36	.30	.43	.35	.30	.41	.35	.30	.40	.34	.29	.27
9.0	.41	.33	.27	.41	.33	.27	.39	.32	.27	.38	.32	.27	.37	.31	.26	.25
10.0	.38	.30	.25	.38	.30	.25	.36	.29	.24	.35	.29	.24	.34	.28	.24	.22



C Range: 0 - 360DEG
 C Interval: 15.0DEG
 Test Speed: HIGH
 Temperature: 25.3°C
 Operators: DAMIN
 Test Date: 2023-08-04

□ Range: 0 - 180DEG
 □ Interval: 1.0DEG
 Test System: EVERFINE GO-2000B_V1 SYSTEM V2.00.471
 Humidity: 65.0%
 Test Distance: 4.880m [K=1.0000]
 Remarks:

WEC AND CCEC

□cc	80%			70%			50%			30%			10%			0
□w	50%	30%	10%	50%	30%	10%	50%	30%	10%	50%	30%	10%	50%	30%	10%	0
□fc	20%			20%			20%			20%			20%			0
RCR	RCR:Room Cavity Ratio						Wall Exitance Coefficients (WEC)									
0.0	.326	.185	.059	.318	.182	.058	.304	.174	.056	.290	.168	.054	.278	.161	.052	
1.0	.303	.166	.051	.296	.163	.050	.283	.157	.049	.271	.152	.048	.260	.147	.046	
2.0	.278	.148	.044	.272	.146	.044	.260	.141	.043	.250	.137	.042	.240	.133	.041	
3.0	.255	.133	.039	.250	.131	.039	.240	.127	.038	.230	.124	.037	.221	.120	.037	
4.0	.235	.120	.035	.230	.118	.034	.221	.115	.034	.213	.112	.033	.205	.109	.033	
5.0	.217	.109	.031	.213	.108	.031	.205	.105	.031	.197	.103	.030	.190	.100	.030	
6.0	.202	.100	.028	.198	.099	.028	.191	.096	.028	.184	.094	.027	.178	.092	.027	
7.0	.188	.092	.026	.185	.091	.026	.178	.089	.025	.172	.087	.025	.166	.085	.025	
8.0	.176	.085	.024	.173	.084	.024	.167	.083	.023	.162	.081	.023	.156	.079	.023	
9.0	.165	.079	.022	.163	.079	.022	.157	.077	.022	.152	.076	.021	.147	.074	.021	
10.0	.165	.079	.022	.163	.079	.022	.157	.077	.022	.152	.076	.021	.147	.074	.021	

□cc	80%			70%			50%			30%			10%			0
□w	50%	30%	10%	50%	30%	10%	50%	30%	10%	50%	30%	10%	50%	30%	10%	0
□fc	20%			20%			20%			20%			20%			0
RCR	RCR:Room Cavity Ratio						Ceiling Cavity Exitance Coefficients (CCEC)									
0.0	.206	.206	.206	.176	.176	.176	.120	.120	.120	.069	.069	.069	.022	.022	.022	
1.0	.197	.171	.148	.168	.147	.128	.115	.101	.088	.066	.059	.051	.021	.019	.017	
2.0	.189	.147	.112	.162	.127	.097	.111	.088	.068	.064	.051	.040	.021	.016	.013	
3.0	.181	.130	.089	.156	.112	.077	.107	.078	.054	.062	.045	.032	.020	.015	.010	
4.0	.174	.117	.073	.149	.101	.063	.103	.070	.045	.059	.041	.026	.019	.013	.009	
5.0	.166	.106	.062	.143	.092	.054	.098	.064	.038	.057	.038	.023	.018	.012	.007	
6.0	.159	.098	.054	.137	.085	.047	.094	.059	.033	.055	.035	.020	.018	.011	.007	
7.0	.152	.091	.048	.131	.079	.042	.090	.055	.030	.053	.033	.018	.017	.011	.006	
8.0	.146	.085	.044	.125	.074	.038	.087	.052	.027	.050	.031	.016	.016	.010	.005	
9.0	.139	.080	.041	.120	.070	.035	.083	.049	.025	.049	.029	.015	.016	.010	.005	
10.0	.134	.076	.038	.115	.066	.033	.080	.047	.024	.047	.028	.014	.015	.009	.005	

C Range: 0 - 360DEG
 C Interval: 15.0DEG
 Test Speed: HIGH
 Temperature:25.3°C
 Operators:DAMIN
 Test Date:2023-08-04

□ Range: 0 - 180DEG
 □ Interval: 1.0DEG
 Test System:EVERFINE GO-2000B_V1 SYSTEM V2.00.471
 Humidity:65.0%
 Test Distance:4.880m [K=1.0000]
 Remarks:

UGR(Unified Glare Rating) Table

ceiling/cavity	0.7	0.7	0.5	0.5	0.3	0.7	0.7	0.5	0.5	0.3
walls	0.5	0.3	0.5	0.3	0.3	0.5	0.3	0.5	0.3	0.3
working plane	0.2	0.2	0.2	0.2	0.2	0.2	0.2	0.2	0.2	0.2
Room dimensions	Viewed crosswise					Viewed endwise				
x = 2H y = 2H	20.6	22.1	20.9	22.4	22.6	20.9	22.5	21.2	22.7	22.9
3H	22.1	23.5	22.5	23.8	24.1	22.7	24.1	23.0	24.3	24.6
4H	22.7	24.0	23.0	24.3	24.6	23.4	24.7	23.7	25.0	25.3
6H	23.1	24.3	23.4	24.7	25.0	23.9	25.2	24.3	25.5	25.8
8H	23.2	24.4	23.6	24.7	25.1	24.1	25.3	24.5	25.6	26.0
12H	23.2	24.4	23.6	24.8	25.1	24.2	25.4	24.6	25.7	26.1
4H 2H	21.4	22.7	21.7	23.0	23.3	21.6	23.0	22.0	23.2	23.5
3H	23.1	24.3	23.5	24.6	24.9	23.5	24.7	23.9	25.1	25.4
4H	23.8	24.9	24.2	25.2	25.6	24.4	25.5	24.8	25.9	26.2
6H	24.3	25.3	24.7	25.6	26.1	25.1	26.1	25.6	26.5	26.9
8H	24.4	25.3	24.9	25.7	26.2	25.4	26.3	25.8	26.7	27.1
12H	24.6	25.4	25.0	25.8	26.2	25.6	26.4	26.0	26.8	27.3
8H 4H	24.2	25.1	24.6	25.5	25.9	24.7	25.6	25.2	26.0	26.5
6H	24.9	25.6	25.4	26.1	26.5	25.6	26.4	26.1	26.8	27.3
8H	25.1	25.8	25.6	26.3	26.8	26.0	26.7	26.5	27.2	27.6
12H	25.3	25.9	25.9	26.4	26.9	26.4	26.9	26.9	27.4	27.9
12H 4H	24.2	25.1	24.7	25.5	25.9	24.8	25.6	25.2	26.0	26.5
6H	25.0	25.7	25.5	26.1	26.6	25.7	26.4	26.2	26.9	27.3
8H	25.3	25.9	25.8	26.4	26.9	26.2	26.7	26.7	27.2	27.8
Variations with the observer position at spacings(CIE Pub.117):										
S = 1.0H	+ 0.1 / - 0.2					+ 0.1 / - 0.2				
1.5H	+ 0.2 / - 0.3					+ 0.2 / - 0.4				
2.0H	+ 0.2 / - 0.4					+ 0.2 / - 0.5				

CIE Pub.117, 1021 lm Total Lamp Luminous Flux Correct (8log(F/F0) = 0.1)
 Area: 0.035 m2

C Range: 0 - 360DEG
 C Interval: 15.0DEG
 Test Speed: HIGH
 Temperature:25.3°C
 Operators:DAMIN
 Test Date:2023-08-04

Range: 0 - 180DEG
 Interval: 1.0DEG
 Test System:EVERFINE GO-2000B_V1 SYSTEM V2.00.471
 Humidity:65.0%
 Test Distance:4.880m [K=1.0000]
 Remarks:

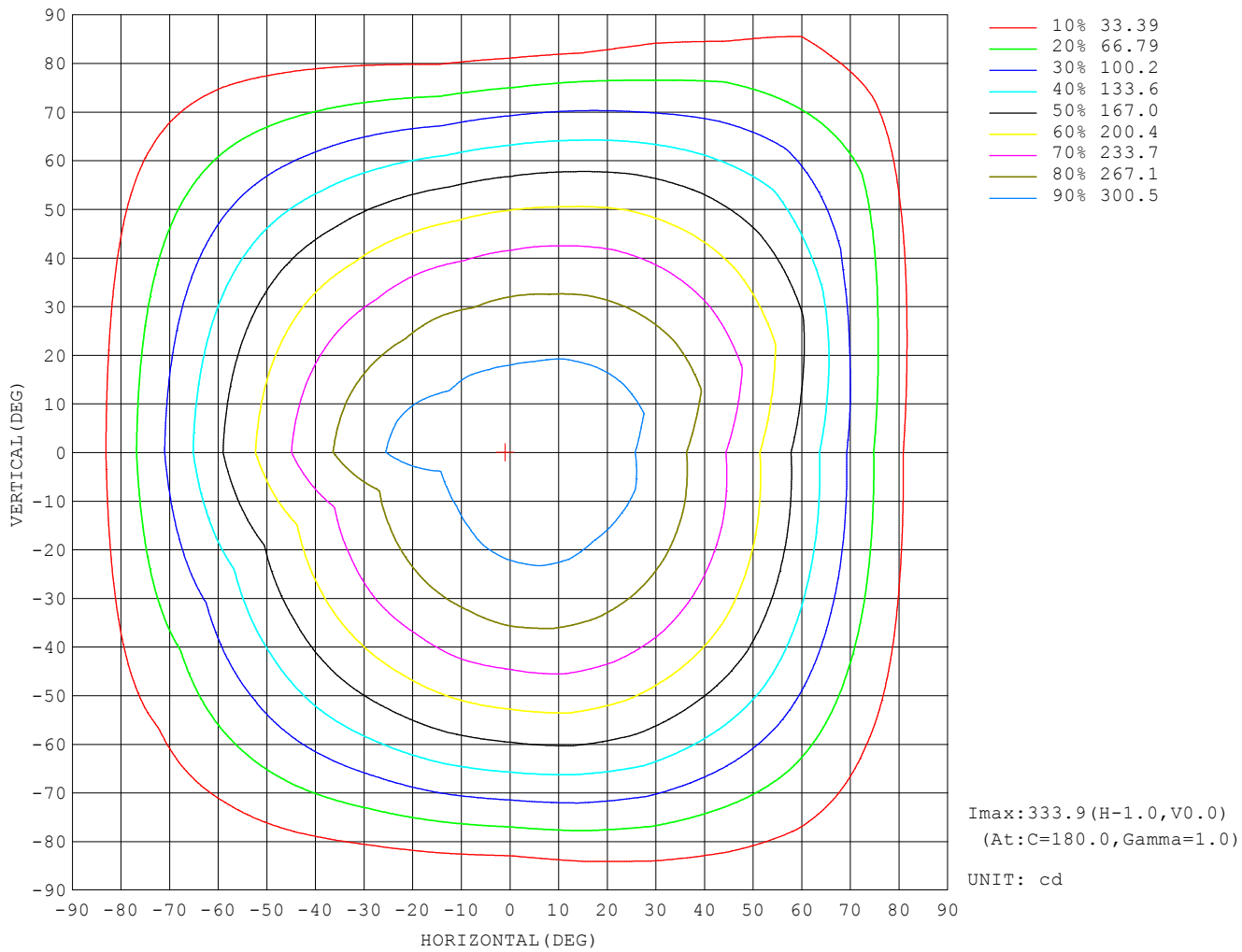
UTILIZATION FACTORS TABLE

REFLECTANCE										
Ceiling	0.8	0.8	0.8	0.7	0.7	0.7	0.5	0.5	0.5	0
Walls	0.7	0.5	0.3	0.7	0.5	0.3	0.7	0.5	0.3	0
Working plane	0.2	0.2	0.2	0.2	0.2	0.2	0.2	0.2	0.2	0
ROOM INDEX	UTILIZATION FACTORS (PERCENT) $k(RI) \times RCR = 5$									
$k = 0.60$	55	44	36	55	43	36	53	43	36	30
0.80	65	53	46	64	53	46	62	52	45	38
1.00	74	62	55	73	62	54	70	63	54	46
1.25	81	70	63	79	69	62	76	68	61	53
1.50	86	76	68	84	75	68	81	73	67	59
2.00	93	84	77	91	83	76	87	80	75	66
2.50	97	89	83	95	87	82	91	85	79	71
3.00	101	93	87	98	92	86	94	88	84	75
4.00	105	99	94	102	97	92	98	93	89	80
5.00	107	102	98	105	100	96	100	96	93	83
ROOM INDEX	UF(total)									Direct
According to DIN EN 13032-2 2004			Suspended				SHRNOM = 1.25			

C Range: 0 - 360DEG
 C Interval: 15.0DEG
 Test Speed: HIGH
 Temperature: 25.3°C
 Operators: DAMIN
 Test Date: 2023-08-04

Range: 0 - 180DEG
 Interval: 1.0DEG
 Test System: EVERFINE GO-2000B_V1 SYSTEM V2.00.471
 Humidity: 65.0%
 Test Distance: 4.880m [K=1.0000]
 Remarks:

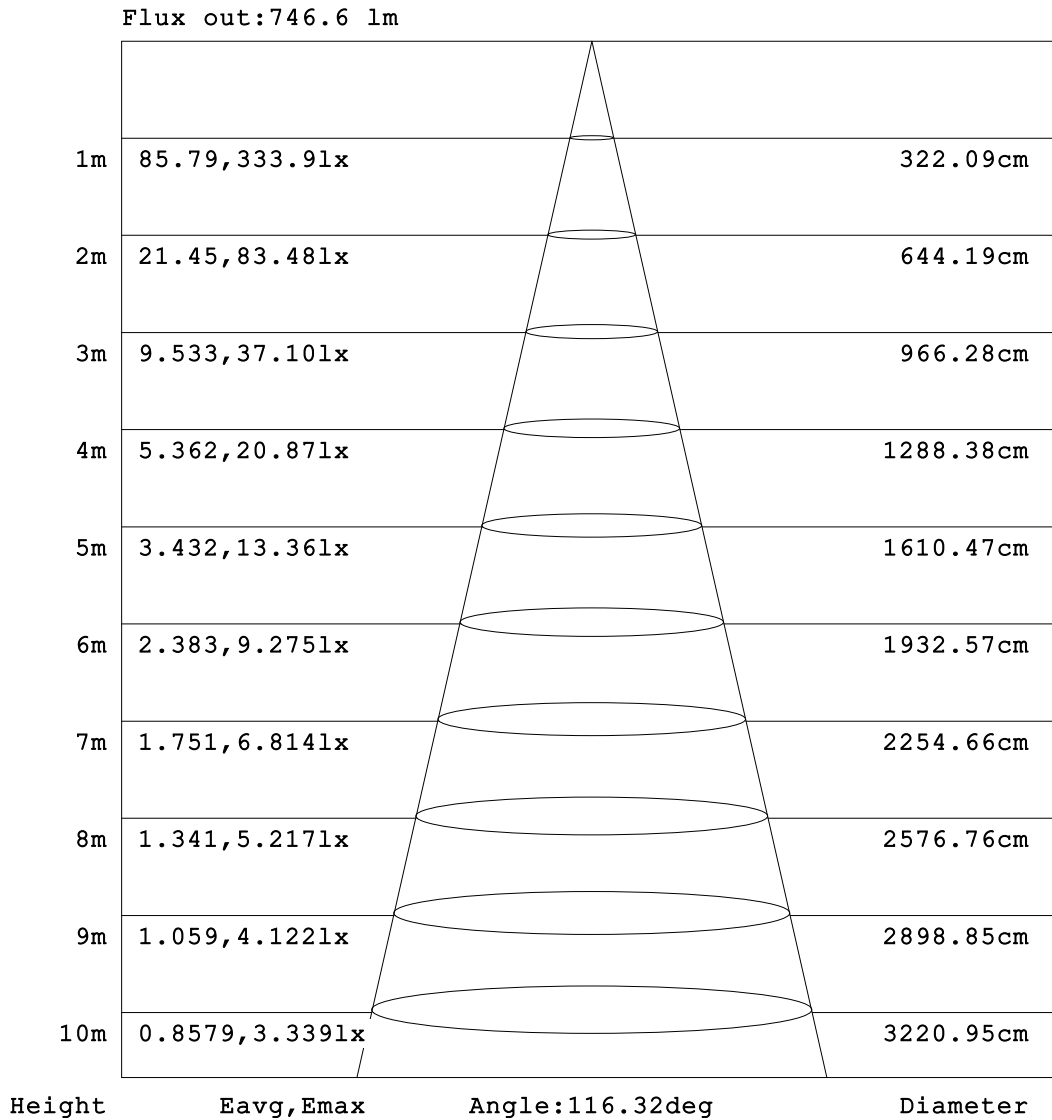
ISOCANDELA DIAGRAM



C Range: 0 - 360DEG
 C Interval: 15.0DEG
 Test Speed: HIGH
 Temperature: 25.3°C
 Operators: DAMIN
 Test Date: 2023-08-04

Range: 0 - 180DEG
 Interval: 1.0DEG
 Test System: EVERFINE GO-2000B_V1 SYSTEM V2.00.471
 Humidity: 65.0%
 Test Distance: 4.880m [K=1.0000]
 Remarks:

AAI Figure

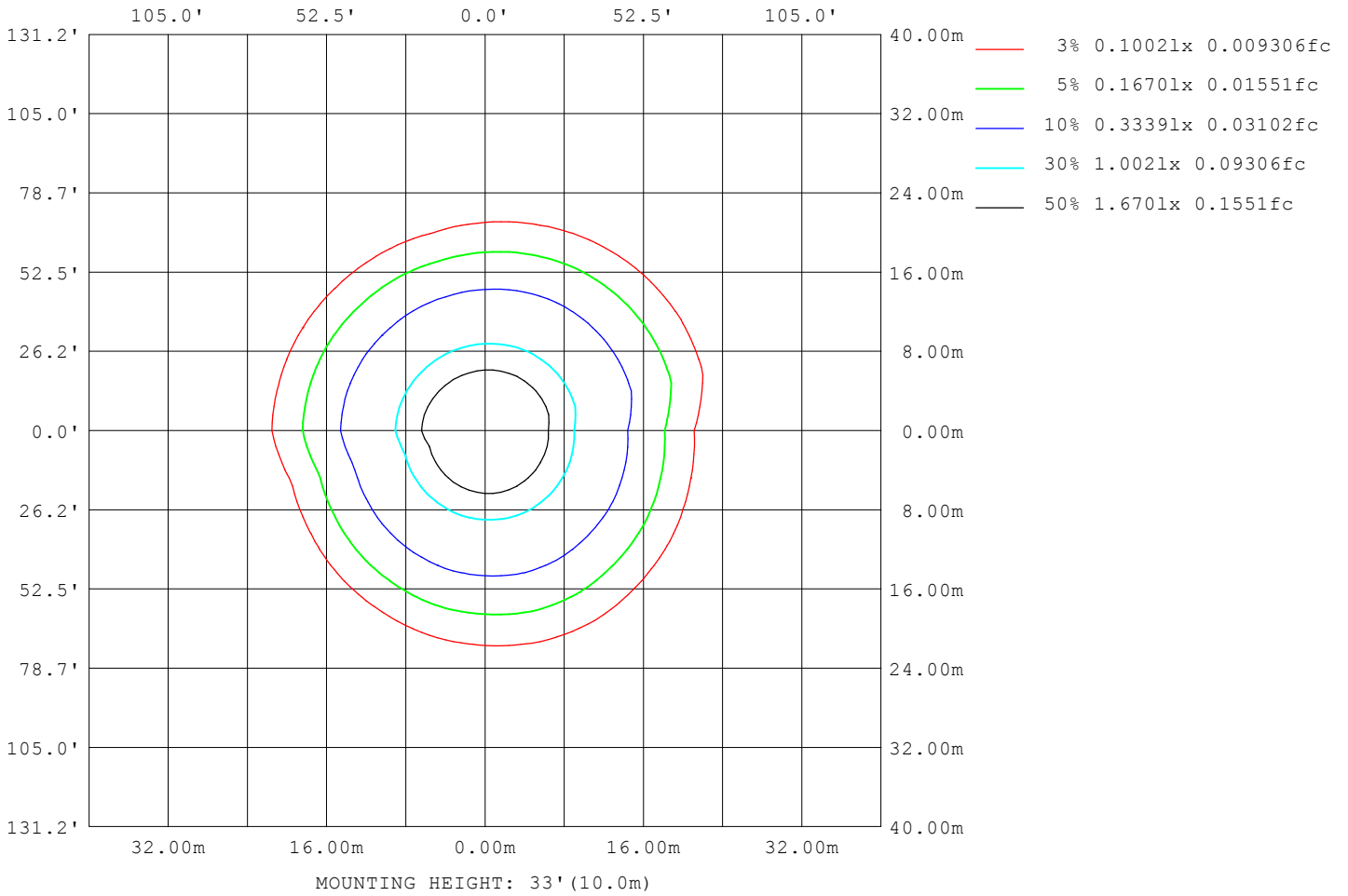


Note:The Curves indicate the illuminated area and the average illumination when the luminaire is at different distance.

C Range: 0 - 360DEG
 C Interval: 15.0DEG
 Test Speed: HIGH
 Temperature:25.3°C
 Operators:DAMIN
 Test Date:2023-08-04

Range: 0 - 180DEG
 Interval: 1.0DEG
 Test System:EVERFINE GO-2000B_V1 SYSTEM V2.00.471
 Humidity:65.0%
 Test Distance:4.880m [K=1.0000]
 Remarks:

ISOLUX DIAGRAM



C Range: 0 - 360DEG
 C Interval: 15.0DEG
 Test Speed: HIGH
 Temperature: 25.3°C
 Operators: DAMIN
 Test Date: 2023-08-04

Range: 0 - 180DEG
 Interval: 1.0DEG
 Test System: EVERFINE GO-2000B_V1 SYSTEM V2.00.471
 Humidity: 65.0%
 Test Distance: 4.880m [K=1.0000]
 Remarks:

LED Avg.L Report

NAME: LED Strip	TYPE: Indoor lighting	WEIGHT: 20g
SPEC.: LED	DIM.: 1000*3.5*1.2mm	SERIAL No.: 20230804001
MFR.: EVERFINE	SUR.: 1000*3.5mm	Shielding Angle:

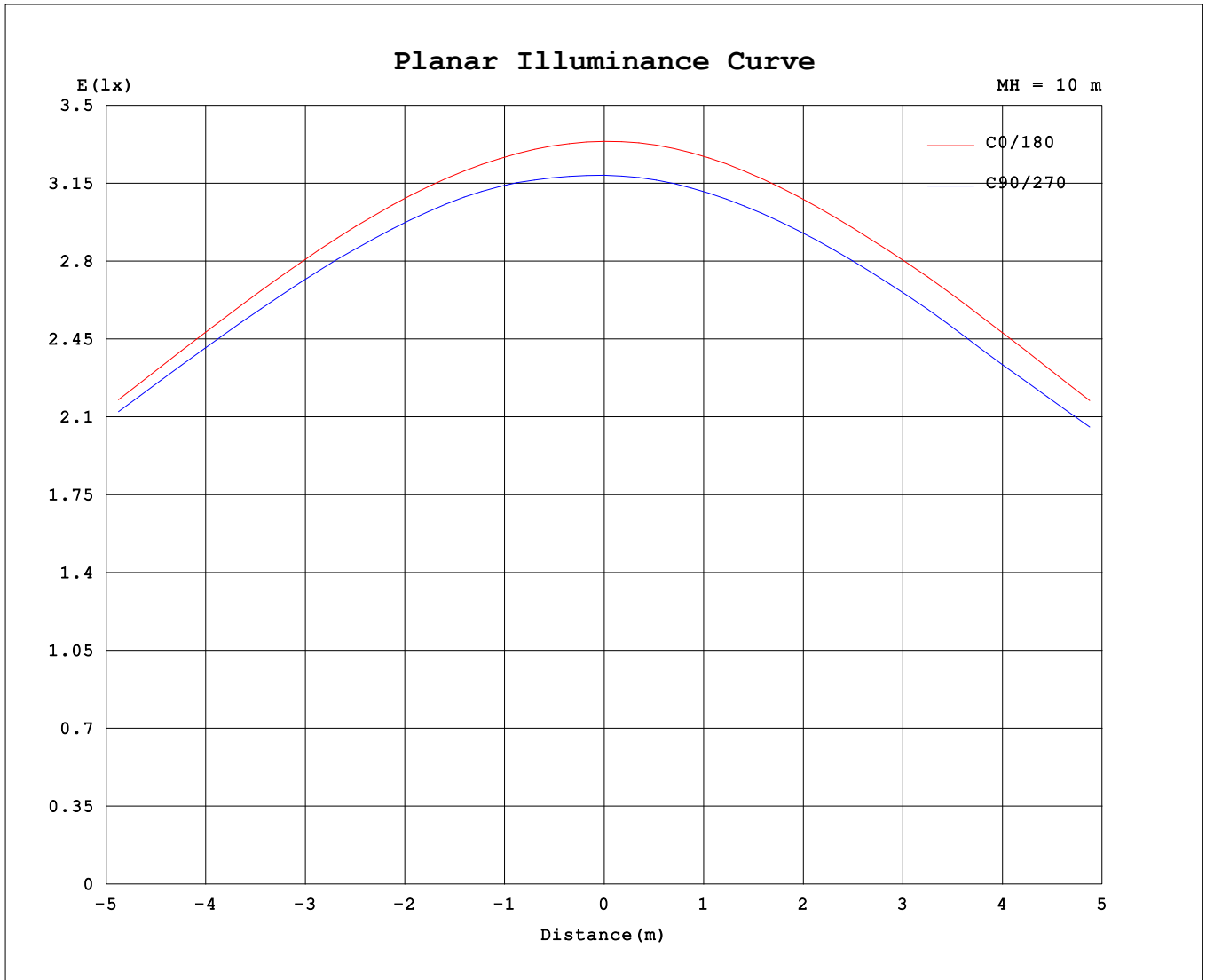
AvgL	cd/m2
L_0~180 (65) av	8796
L_0~180 (75) av	7889
L_0~180 (85) av	6770
L_90~270 (65) av	8833
L_90~270 (75) av	8033
L_90~270 (85) av	6542
L_45 (65) av	9049
L_45 (75) av	8601
L_45 (85) av	8749

Standard: GB/T 29293-2012

C Range: 0 - 360DEG
 C Interval: 15.0DEG
 Test Speed: HIGH
 Temperature:25.3℃
 Operators:DAMIN
 Test Date:2023-08-04

Range: 0 - 180DEG
 Interval: 1.0DEG
 Test System:EVERFINE GO-2000B_V1 SYSTEM V2.00.471
 Humidity:65.0%
 Test Distance:4.880m [K=1.0000]
 Remarks:

Planar Illuminance Curve



C Range: 0 - 360DEG
 C Interval: 15.0DEG
 Test Speed: HIGH
 Temperature: 25.3°C
 Operators: DAMIN
 Test Date: 2023-08-04

Range: 0 - 180DEG
 Interval: 1.0DEG
 Test System: EVERFINE GO-2000B_V1 SYSTEM V2.00.471
 Humidity: 65.0%
 Test Distance: 4.880m [K=1.0000]
 Remarks:

LUMINOUS DISTRIBUTION INTENSITY DATA

Table--1

UNIT: cd

C (DEG) \ □ (DEG)	0	15	30	45	60	75	90	105	120	135	150	165	180	195	210	225	240	255	270
0	334	333	327	322	321	319	319	318	318	318	319	320	334	333	327	322	321	319	319
5	332	332	326	322	320	319	319	318	317	315	315	315	333	331	324	319	318	317	317
10	328	328	324	320	319	318	316	315	312	310	309	309	328	325	318	313	312	311	312
15	322	323	319	315	315	314	312	308	305	301	300	300	322	318	311	305	305	305	305
20	314	315	312	309	309	308	304	301	296	293	291	289	314	309	302	297	297	295	296
25	302	305	302	300	300	299	295	292	286	282	278	276	302	298	291	285	284	283	285
30	288	292	290	290	290	288	284	278	273	268	263	260	288	284	277	271	271	269	273
35	272	275	276	277	276	274	270	263	257	252	247	243	272	267	261	255	255	254	258
40	252	257	259	261	260	257	251	247	239	234	228	224	254	249	243	237	236	235	239
45	231	237	239	242	242	240	232	228	220	214	208	204	233	229	223	217	216	216	220
50	207	213	218	221	222	220	213	207	199	192	186	181	211	207	201	195	194	194	199
55	182	188	194	197	200	198	190	184	176	169	162	158	187	183	178	172	170	170	175
60	155	161	168	171	175	173	165	159	151	144	137	133	162	157	152	147	145	144	150
65	126	131	139	143	148	145	138	132	125	119	112	108	134	130	126	121	118	116	124
70	95.5	101	109	114	119	116	109	104	96.9	92.5	87.0	83.5	106	102	98.4	93.6	90.7	87.8	95.6
75	65.6	70.5	78.6	83.9	88.5	86.5	79.1	75.0	69.0	65.8	61.5	58.6	77.4	73.9	70.8	66.8	63.2	59.8	66.4
80	37.8	42.3	50.4	54.9	58.6	56.3	49.4	46.5	42.7	40.3	36.9	34.9	49.0	46.5	44.6	41.4	37.7	33.7	38.7
85	16.4	19.9	27.6	31.1	32.5	30.1	23.8	22.4	18.0	16.3	14.2	14.0	24.9	23.0	22.4	20.0	17.1	13.6	16.1
90	5.38	7.00	10.6	16.7	16.4	12.5	5.42	5.03	4.46	3.94	3.35	3.15	9.13	8.32	8.33	7.22	5.41	3.56	2.96
95	3.43	4.49	8.47	8.22	10.3	5.44	2.87	1.81	1.86	2.32	2.49	2.45	3.57	3.31	3.33	2.83	2.19	1.52	1.44
100	2.92	3.24	6.66	7.20	5.31	3.18	1.29	1.62	1.72	1.69	1.80	1.84	1.89	1.85	1.74	1.74	1.63	1.50	1.44
105	1.78	1.84	4.46	5.55	5.34	2.88	1.38	1.56	1.68	1.78	1.89	1.89	1.69	1.72	1.77	1.76	1.70	1.66	1.61
110	1.61	1.64	3.25	5.24	4.89	4.65	1.55	1.64	1.74	1.89	2.00	2.00	1.79	1.81	1.85	1.88	1.87	1.87	1.83
115	1.78	1.79	2.40	4.65	1.71	1.73	1.73	1.80	1.88	2.01	2.10	2.08	1.92	1.94	1.98	2.04	2.06	2.08	2.04
120	1.97	1.95	2.04	1.94	1.86	1.89	1.91	1.98	2.06	2.15	2.20	2.20	2.06	2.09	2.13	2.21	2.26	2.28	2.25
125	2.15	2.14	2.10	2.09	2.03	2.06	2.10	2.17	2.24	2.32	2.36	2.35	2.22	2.25	2.30	2.40	2.45	2.47	2.43
130	2.34	2.37	2.28	2.26	2.21	2.24	2.29	2.36	2.44	2.51	2.54	2.52	2.38	2.42	2.48	2.59	2.64	2.65	2.61
135	2.53	2.54	2.46	2.44	2.39	2.43	2.48	2.55	2.62	2.69	2.72	2.70	2.56	2.60	2.66	2.77	2.82	2.83	2.78
140	2.71	2.71	2.64	2.62	2.58	2.62	2.67	2.74	2.79	2.86	2.89	2.88	2.75	2.79	2.84	2.94	2.99	2.99	2.95
145	2.89	2.90	2.82	2.81	2.77	2.81	2.85	2.93	2.96	3.02	3.05	3.05	2.93	2.96	3.01	3.10	3.14	3.14	3.11
150	3.07	3.09	3.01	2.99	2.95	4.01	3.82	3.21	3.13	3.18	3.20	3.22	3.11	3.14	3.18	3.25	3.28	3.28	3.25
155	3.26	3.26	3.19	3.17	3.88	3.83	3.82	3.84	3.29	3.32	3.34	3.37	3.29	3.30	3.33	3.38	3.42	3.42	3.39
160	3.43	3.43	3.35	4.27	3.73	3.78	3.84	3.85	3.45	3.46	3.47	3.51	3.46	3.45	3.47	3.51	3.54	3.54	3.52
165	3.59	3.58	3.51	4.21	3.64	3.74	3.81	3.89	3.75	3.59	3.60	3.64	3.63	3.60	3.61	3.62	3.65	3.64	3.63
170	3.73	3.72	3.64	3.69	3.65	3.72	3.81	3.88	3.84	3.84	3.72	3.76	3.76	3.72	3.73	3.72	3.74	3.73	3.73
175	3.84	3.83	3.76	3.75	3.74	3.77	3.80	3.88	3.92	3.97	3.95	3.90	3.87	3.83	3.82	3.79	3.81	3.80	3.81
180	3.91	3.89	3.84	3.83	3.82	3.84	3.86	3.90	3.97	4.03	4.05	4.21	3.91	3.88	3.86	3.81	3.82	3.84	3.84

C Range: 0 - 360DEG
 C Interval: 15.0DEG
 Test Speed: HIGH
 Temperature:25.3°C
 Operators:DAMIN
 Test Date:2023-08-04

□ Range: 0 - 180DEG
 □ Interval: 1.0DEG
 Test System:EVERFINE GO-2000B_V1 SYSTEM V2.00.471
 Humidity:65.0%
 Test Distance:4.880m [K=1.0000]
 Remarks:

LUMINOUS DISTRIBUTION INTENSITY DATA

Table--2

UNIT: cd

C (DEG) \ □ (DEG)	285	300	315	330	345														
0	318	318	318	319	320														
5	317	318	319	321	323														
10	313	315	317	320	321														
15	307	310	313	316	319														
20	299	304	307	311	314														
25	289	294	300	304	307														
30	277	283	289	294	298														
35	262	270	276	282	285														
40	246	254	261	267	271														
45	228	237	244	250	254														
50	207	217	224	231	234														
55	184	195	203	209	212														
60	160	171	179	185	189														
65	133	144	153	160	162														
70	105	114	124	133	122														
75	76.4	85.4	95.2	102	95.3														
80	46.5	57.3	67.3	69.6	70.9														
85	21.9	32.8	39.3	44.4	37.8														
90	6.78	15.0	22.2	16.6	13.9														
95	2.05	5.19	8.84	11.6	16.5														
100	1.58	4.81	9.75	17.1	20.7														
105	1.66	1.79	6.43	10.5	12.7														
110	1.84	1.87	1.97	3.74	7.17														
115	2.00	1.99	2.05	2.08	2.10														
120	2.17	2.15	2.15	2.22	2.25														
125	2.35	2.32	2.32	2.36	2.43														
130	2.53	2.50	2.49	2.52	2.68														
135	2.70	2.67	2.67	2.72	2.91														
140	2.88	2.84	2.86	2.91	3.10														
145	3.05	3.01	3.04	3.10	3.35														
150	3.23	3.19	3.22	3.28	3.53														
155	3.38	3.36	3.39	3.47	3.67														
160	3.53	3.51	3.55	3.63	3.79														
165	3.66	3.65	3.71	3.75	3.90														
170	3.78	3.79	3.86	3.89	4.14														
175	3.86	3.90	3.95	3.96	4.19														
180	3.92	3.97	4.01	4.00	4.05														

C Range: 0 - 360DEG
 C Interval: 15.0DEG
 Test Speed: HIGH
 Temperature:25.3°C
 Operators:DAMIN
 Test Date:2023-08-04

□ Range: 0 - 180DEG
 □ Interval: 1.0DEG
 Test System:EVERFINE GO-2000B_V1 SYSTEM V2.00.471
 Humidity:65.0%
 Test Distance:4.880m [K=1.0000]
 Remarks: