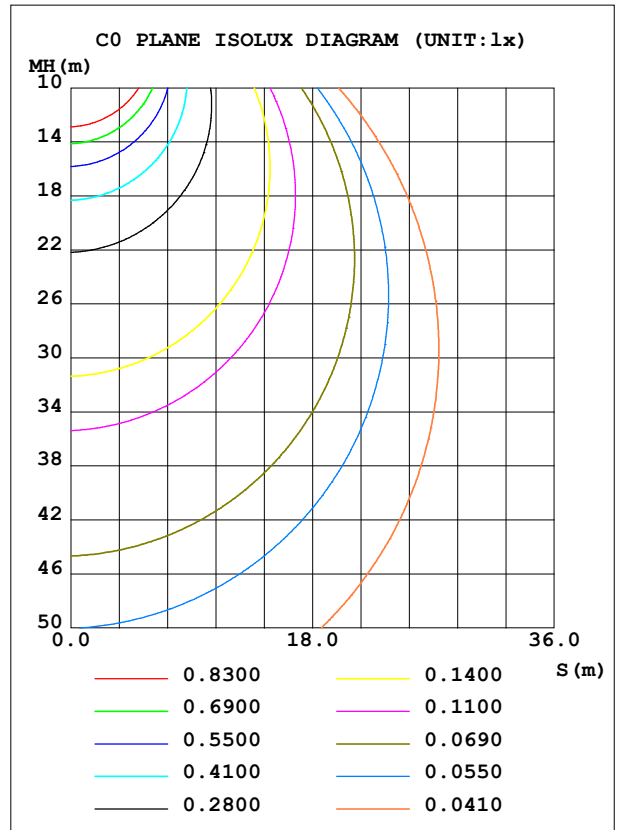
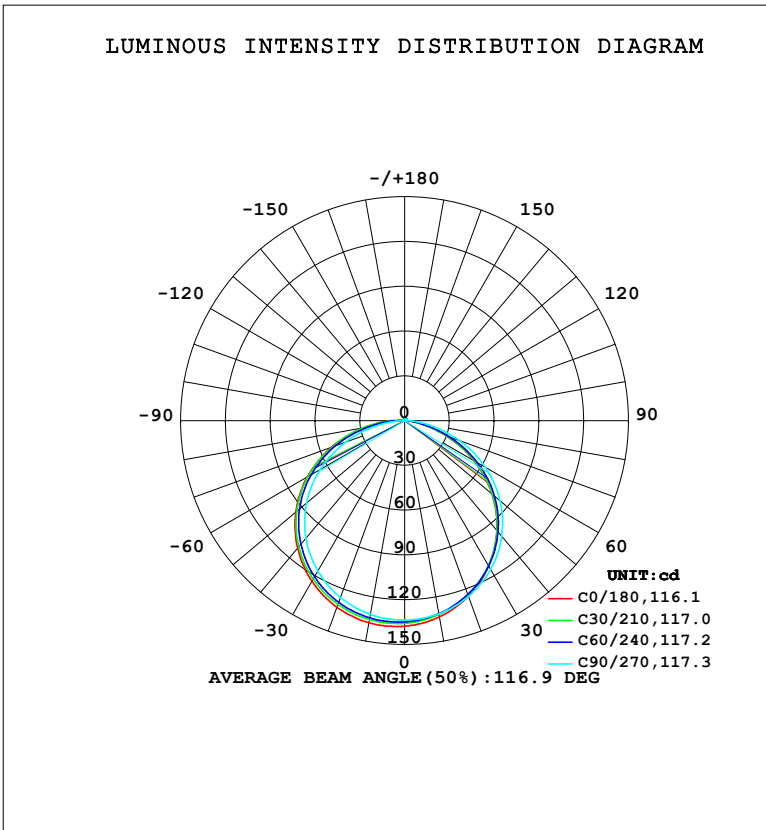


LUMINAIRE PHOTOMETRIC TEST REPORT

NAME: LED Strip	TYPE: Indoor lighting	WEIGHT: 20g
SPEC.: 2835 080LED	DIM.: 500*8*1.2MM	SERIAL No.: 20230808001
MFR.: EVERFINE	SUR.: 500*8MM	Shielding Angle:

DATA OF LAMP		PHOTOMETRIC DATA			
WNOBB-24 (WCP) -HR-JK-CV-UE-EP		Imax (cd)	138.1	S/MH (C0/180)	1.34
NOMINAL POWER (W)	2.30708	LOR (%)	100.0	S/MH (C90/270)	1.29
RATED VOLTAGE (V)	DC 24V	TOTAL FLUX (lm)	413.54	<input type="checkbox"/> UP, DN (C0-180)	1.1,48.6
NOMINAL FLUX (lm)	413.542	CIE CLASS	DIRECT	<input type="checkbox"/> UP, DN (C180-360)	0.9,49.4
LAMPS INSIDE	1	<input type="checkbox"/> up (%)	2.0	CIBSE SHR NOM	1.25
TEST VOLTAGE (V)	DC 24V	<input type="checkbox"/> down (%)	98.0	CIBSE SHR MAX	1.35



C Range: 0 - 360DEG
 C Interval: 15.0DEG
 Test Speed: HIGH
 Temperature: 25.3°C
 Operators: DAMIN
 Test Date: 2023-08-11

Range: 0 - 180DEG
 Interval: 1.0DEG
 Test System: EVERFINE GO-2000B_V1 SYSTEM V2.00.471
 Humidity: 65.0%
 Test Distance: 4.880m [K=1.0000]
 Remarks:

ZONAL FLUX DIAGRAM

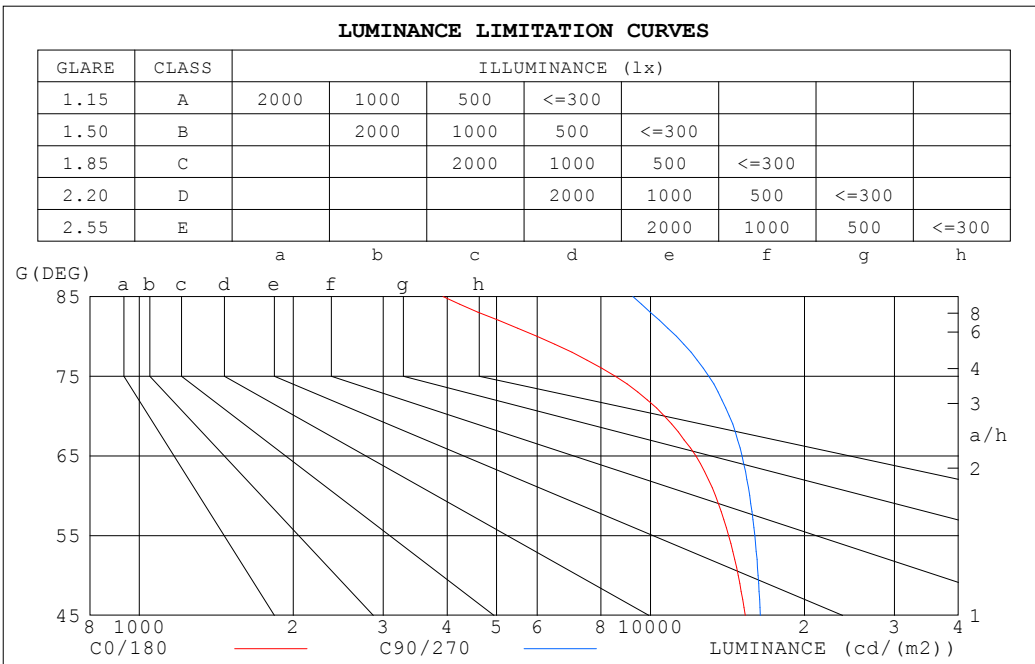
ZONAL FLUX DIAGRAM:

°	C0	C45	C90	C135	C180	C225	C270	C315	°	□ zone	□ total	%lum,lamp
10	133.6	131.6	131.4	131.3	137.5	134.6	131.8	128.5	0- 10	12.72	12.72	3.08,3.08
20	125.1	123.9	125.3	126.8	133.0	130.1	126.0	121.4	10- 20	36.60	49.32	11.9,11.9
30	112.5	112.3	115.1	118.3	124.3	121.6	116.3	110.4	20- 30	55.96	105.3	25.5,25.5
40	96.11	96.81	101.2	106.0	111.6	109.3	102.9	93.60	30- 40	68.28	173.6	42,42
50	76.31	77.70	83.46	90.02	95.21	93.25	85.86	72.94	40- 50	71.91	245.5	59.4,59.4
60	53.58	55.02	62.51	70.65	75.43	73.74	65.13	52.55	50- 60	66.13	311.6	75.3,75.3
70	29.10	30.68	39.02	49.28	52.27	50.57	41.85	31.46	60- 70	51.21	362.8	87.7,87.7
80	8.329	8.972	15.60	27.78	28.06	26.77	17.96	12.78	70- 80	30.73	393.5	95.2,95.2
90	0.8273	1.057	0.9885	10.79	7.770	7.281	1.389	4.307	80- 90	11.78	405.3	98,98
100	0.6862	0.6005	0.4766	1.920	0.8207	0.7198	0.4928	0.9514	90-100	2.663	408.0	98.7,98.7
110	0.7596	0.7182	0.6407	1.272	0.6006	0.6188	0.6595	0.7927	100-110	1.003	409.0	98.9,98.9
120	0.8894	0.8849	0.8171	0.7488	0.7501	0.7572	0.8396	0.9606	110-120	0.8774	409.9	99.1,99.1
130	1.045	1.049	0.9851	0.8984	0.9131	0.9177	1.005	1.128	120-130	0.8373	410.7	99.3,99.3
140	1.187	1.206	1.144	1.072	1.076	1.082	1.161	1.290	130-140	0.8366	411.5	99.5,99.5
150	1.329	1.348	1.289	1.267	1.240	1.245	1.304	1.442	140-150	0.7782	412.3	99.7,99.7
160	1.459	1.464	1.414	1.457	1.402	1.385	1.428	1.575	150-160	0.6436	413.0	99.9,99.9
170	1.566	1.560	1.522	1.656	1.542	1.519	1.532	1.682	160-170	0.4318	413.4	100,100
180	1.622	1.604	1.578	1.738	1.622	1.602	1.591	1.736	170-180	0.1552	413.5	100,100
DEG	LUMINOUS INTENSITY:cd									UNIT:lm		

C Range: 0 - 360DEG
 C Interval: 15.0DEG
 Test Speed: HIGH
 Temperature:25.3°C
 Operators:DAMIN
 Test Date:2023-08-11

□ Range: 0 - 180DEG
 □ Interval: 1.0DEG
 Test System:EVERFINE GO-2000B_V1 SYSTEM V2.00.471
 Humidity:65.0%
 Test Distance:4.880m [K=1.0000]
 Remarks:

LUMINANCE LIMITATION CURVES



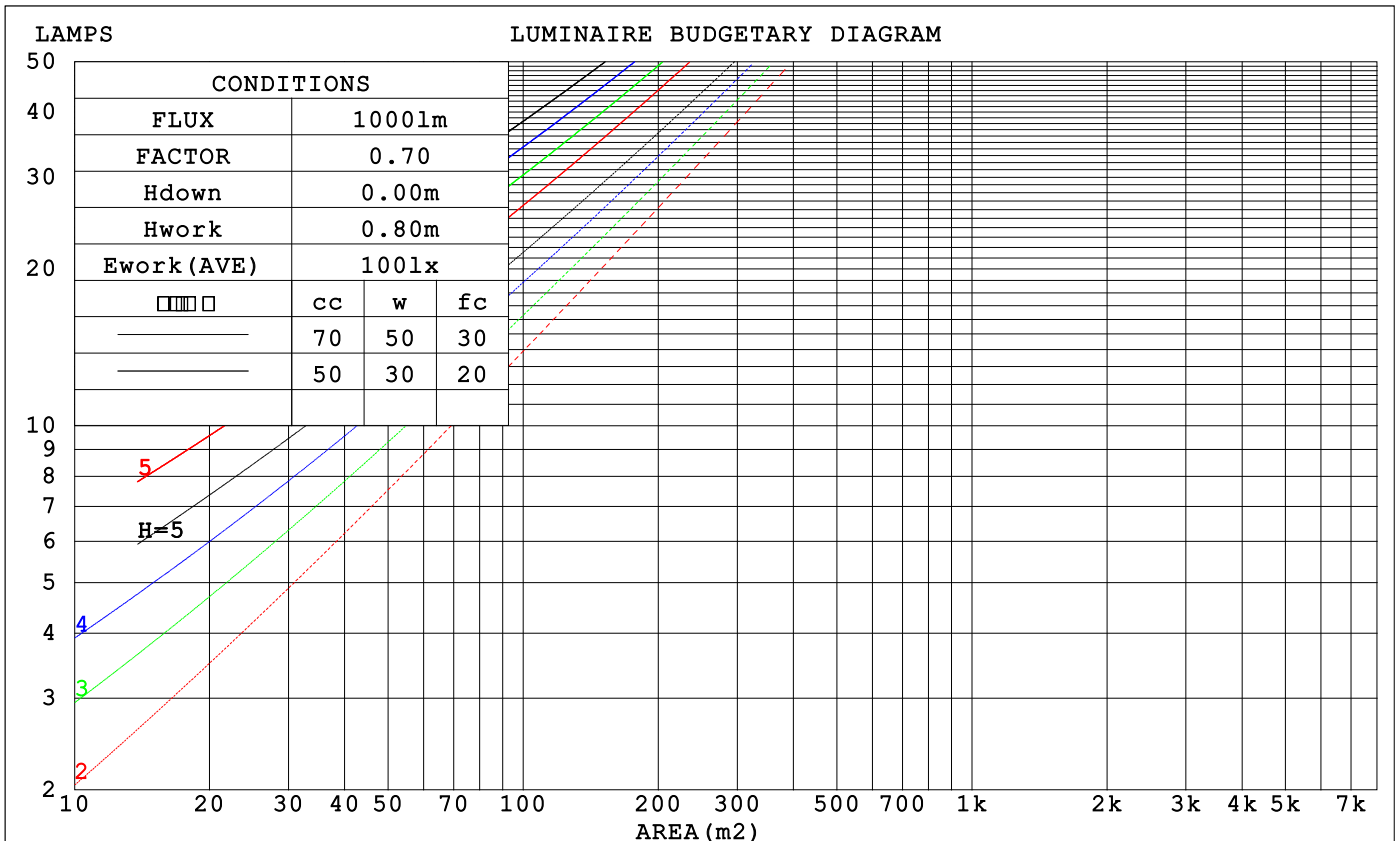
LUMINANCE cd/(m2)		
G (DEG)	C0/180	C90/270
85	3930	9230
80	5996	11232
75	8526	13002
70	10636	14260
65	12272	15106
60	13395	15628
55	14218	15990
50	14840	16231
45	15314	16400

C Range: 0 - 360DEG
 C Interval: 15.0DEG
 Test Speed: HIGH
 Temperature: 25.3°C
 Operators: DAMIN
 Test Date: 2023-08-11

Range: 0 - 180DEG
 Interval: 1.0DEG
 Test System: EVERFINE GO-2000B_V1 SYSTEM V2.00.471
 Humidity: 65.0%
 Test Distance: 4.880m [K=1.0000]
 Remarks:

CU AND LUMINAIRE BUDGETARY ESTIMATE DIAGRAM

□cc	80%			70%			50%			30%			10%			0
□w	50%	30%	10%	50%	30%	10%	50%	30%	10%	50%	30%	10%	50%	30%	10%	0
□fc	20%			20%			20%			20%			20%			0
RCR	RCR:Room Cavity Ratio			Coefficients of Utilization(CU)												
0.0	1.19	1.19	1.19	1.16	1.16	1.16	1.10	1.10	1.10	1.05	1.05	1.05	1.00	1.00	1.00	.98
1.0	1.03	.98	.94	1.00	.96	.92	.96	.92	.89	.91	.89	.86	.87	.85	.83	.81
2.0	.89	.82	.76	.87	.81	.75	.83	.78	.73	.80	.75	.71	.76	.72	.69	.67
3.0	.78	.70	.63	.76	.68	.62	.73	.66	.61	.70	.64	.60	.67	.62	.58	.56
4.0	.69	.60	.53	.67	.59	.53	.65	.57	.52	.62	.56	.51	.60	.54	.50	.48
5.0	.61	.52	.46	.60	.52	.45	.58	.50	.44	.56	.49	.44	.54	.48	.43	.41
6.0	.55	.46	.40	.54	.46	.39	.52	.45	.39	.50	.43	.38	.48	.42	.38	.36
7.0	.50	.41	.35	.49	.41	.35	.47	.40	.34	.46	.39	.34	.44	.38	.33	.31
8.0	.46	.37	.31	.45	.37	.31	.43	.36	.31	.42	.35	.30	.41	.34	.30	.28
9.0	.42	.33	.28	.41	.33	.28	.40	.33	.27	.39	.32	.27	.37	.31	.27	.25
10.0	.39	.31	.25	.38	.30	.25	.37	.30	.25	.36	.29	.25	.35	.29	.24	.23



C Range: 0 - 360DEG
 C Interval: 15.0DEG
 Test Speed: HIGH
 Temperature:25.3°C
 Operators:DAMIN
 Test Date:2023-08-11

□ Range: 0 - 180DEG
 □ Interval: 1.0DEG
 Test System:EVERFINE GO-2000B_V1 SYSTEM V2.00.471
 Humidity:65.0%
 Test Distance:4.880m [K=1.0000]
 Remarks:

WEC AND CCEC

□cc	80%			70%			50%			30%			10%			0
□w	50%	30%	10%	50%	30%	10%	50%	30%	10%	50%	30%	10%	50%	30%	10%	0
□fc	20%			20%			20%			20%			20%			0
RCR	RCR:Room Cavity Ratio						Wall Exitance Coefficients (WEC)									
0.0																
1.0	.324	.184	.058	.316	.180	.057	.301	.173	.055	.288	.166	.053	.276	.160	.052	
2.0	.300	.164	.050	.293	.161	.050	.280	.156	.048	.268	.151	.047	.258	.146	.046	
3.0	.276	.147	.044	.270	.144	.043	.258	.140	.043	.248	.136	.042	.238	.132	.041	
4.0	.253	.132	.039	.248	.130	.038	.238	.126	.038	.228	.123	.037	.220	.119	.036	
5.0	.233	.119	.034	.229	.117	.034	.220	.114	.034	.211	.111	.033	.203	.109	.033	
6.0	.216	.108	.031	.212	.107	.031	.204	.104	.030	.196	.102	.030	.189	.100	.030	
7.0	.201	.099	.028	.197	.098	.028	.190	.096	.028	.183	.094	.027	.176	.092	.027	
8.0	.187	.091	.026	.184	.090	.026	.177	.089	.025	.171	.087	.025	.165	.085	.025	
9.0	.175	.085	.024	.172	.084	.024	.166	.082	.023	.161	.081	.023	.155	.079	.023	
10.0	.165	.079	.022	.162	.078	.022	.157	.077	.022	.151	.075	.021	.147	.074	.021	

□cc	80%			70%			50%			30%			10%			0
□w	50%	30%	10%	50%	30%	10%	50%	30%	10%	50%	30%	10%	50%	30%	10%	0
□fc	20%			20%			20%			20%			20%			0
RCR	RCR:Room Cavity Ratio						Ceiling Cavity Exitance Coefficients (CCEC)									
0.0	.206	.206	.206	.176	.176	.176	.120	.120	.120	.069	.069	.069	.022	.022	.022	
1.0	.197	.171	.149	.168	.147	.128	.115	.101	.088	.066	.059	.051	.021	.019	.017	
2.0	.189	.147	.112	.162	.127	.097	.111	.088	.068	.064	.051	.040	.020	.017	.013	
3.0	.181	.130	.089	.155	.112	.077	.107	.078	.054	.062	.045	.032	.020	.015	.010	
4.0	.173	.117	.073	.149	.101	.064	.102	.070	.045	.059	.041	.027	.019	.013	.009	
5.0	.166	.106	.062	.142	.092	.054	.098	.064	.038	.057	.038	.023	.018	.012	.007	
6.0	.159	.098	.054	.136	.085	.047	.094	.059	.034	.055	.035	.020	.018	.011	.007	
7.0	.152	.091	.049	.131	.079	.042	.090	.055	.030	.052	.033	.018	.017	.011	.006	
8.0	.145	.085	.044	.125	.074	.039	.087	.052	.027	.050	.031	.016	.016	.010	.005	
9.0	.139	.080	.041	.120	.070	.036	.083	.049	.025	.048	.029	.015	.016	.010	.005	
10.0	.133	.076	.038	.115	.066	.033	.080	.047	.024	.047	.028	.014	.015	.009	.005	

C Range: 0 - 360DEG
 C Interval: 15.0DEG
 Test Speed: HIGH
 Temperature:25.3°C
 Operators:DAMIN
 Test Date:2023-08-11

□ Range: 0 - 180DEG
 □ Interval: 1.0DEG
 Test System:EVERFINE GO-2000B_V1 SYSTEM V2.00.471
 Humidity:65.0%
 Test Distance:4.880m [K=1.0000]
 Remarks:

UGR(Unified Glare Rating) Table

ceiling/cavity	0.7	0.7	0.5	0.5	0.3	0.7	0.7	0.5	0.5	0.3
walls	0.5	0.3	0.5	0.3	0.3	0.5	0.3	0.5	0.3	0.3
working plane	0.2	0.2	0.2	0.2	0.2	0.2	0.2	0.2	0.2	0.2
Room dimensions	Viewed crosswise					Viewed endwise				
x = 2H y = 2H	24.6	26.1	24.9	26.4	26.6	25.1	26.6	25.4	26.9	27.1
3H	25.8	27.2	26.1	27.5	27.8	26.6	28.0	26.9	28.3	28.6
4H	26.2	27.5	26.5	27.8	28.1	27.2	28.5	27.5	28.8	29.1
6H	26.3	27.6	26.7	27.9	28.2	27.6	28.8	27.9	29.1	29.4
8H	26.3	27.5	26.7	27.9	28.2	27.7	28.9	28.0	29.2	29.5
12H	26.3	27.5	26.7	27.8	28.2	27.7	28.9	28.1	29.2	29.6
4H 2H	25.2	26.5	25.5	26.8	27.1	25.6	26.9	25.9	27.2	27.5
3H	26.5	27.7	26.9	28.0	28.3	27.2	28.3	27.6	28.7	29.0
4H	26.9	28.0	27.3	28.4	28.7	27.8	28.9	28.2	29.3	29.6
6H	27.2	28.1	27.6	28.5	28.9	28.3	29.2	28.7	29.6	30.0
8H	27.2	28.1	27.6	28.5	28.9	28.4	29.3	28.9	29.7	30.2
12H	27.2	28.0	27.7	28.4	28.9	28.5	29.3	29.0	29.8	30.2
8H 4H	27.1	28.0	27.5	28.4	28.8	27.9	28.8	28.4	29.2	29.6
6H	27.4	28.1	27.9	28.6	29.1	28.5	29.2	28.9	29.6	30.1
8H	27.5	28.1	28.0	28.6	29.1	28.6	29.3	29.1	29.8	30.3
12H	27.5	28.1	28.0	28.6	29.1	28.8	29.4	29.3	29.8	30.4
12H 4H	27.1	27.9	27.5	28.3	28.8	27.9	28.7	28.3	29.1	29.6
6H	27.4	28.1	27.9	28.5	29.0	28.5	29.1	28.9	29.6	30.1
8H	27.5	28.1	28.0	28.6	29.1	28.7	29.2	29.2	29.7	30.2
Variations with the observer position at spacings(CIE Pub.117):										
S = 1.0H	+ 0.2 / - 0.3					+ 0.2 / - 0.2				
1.5H	+ 0.2 / - 0.4					+ 0.2 / - 0.2				
2.0H	+ 0.3 / - 0.3					+ 0.3 / - 0.4				

CIE Pub.117, 413.5 lm Total Lamp Luminous Flux Correct (8log(F/F0) = -3.1)
 Area: 0.008 m2

C Range: 0 - 360DEG
 C Interval: 15.0DEG
 Test Speed: HIGH
 Temperature:25.3°C
 Operators:DAMIN
 Test Date:2023-08-11

Range: 0 - 180DEG
 Interval: 1.0DEG
 Test System:EVERFINE GO-2000B_V1 SYSTEM V2.00.471
 Humidity:65.0%
 Test Distance:4.880m [K=1.0000]
 Remarks:

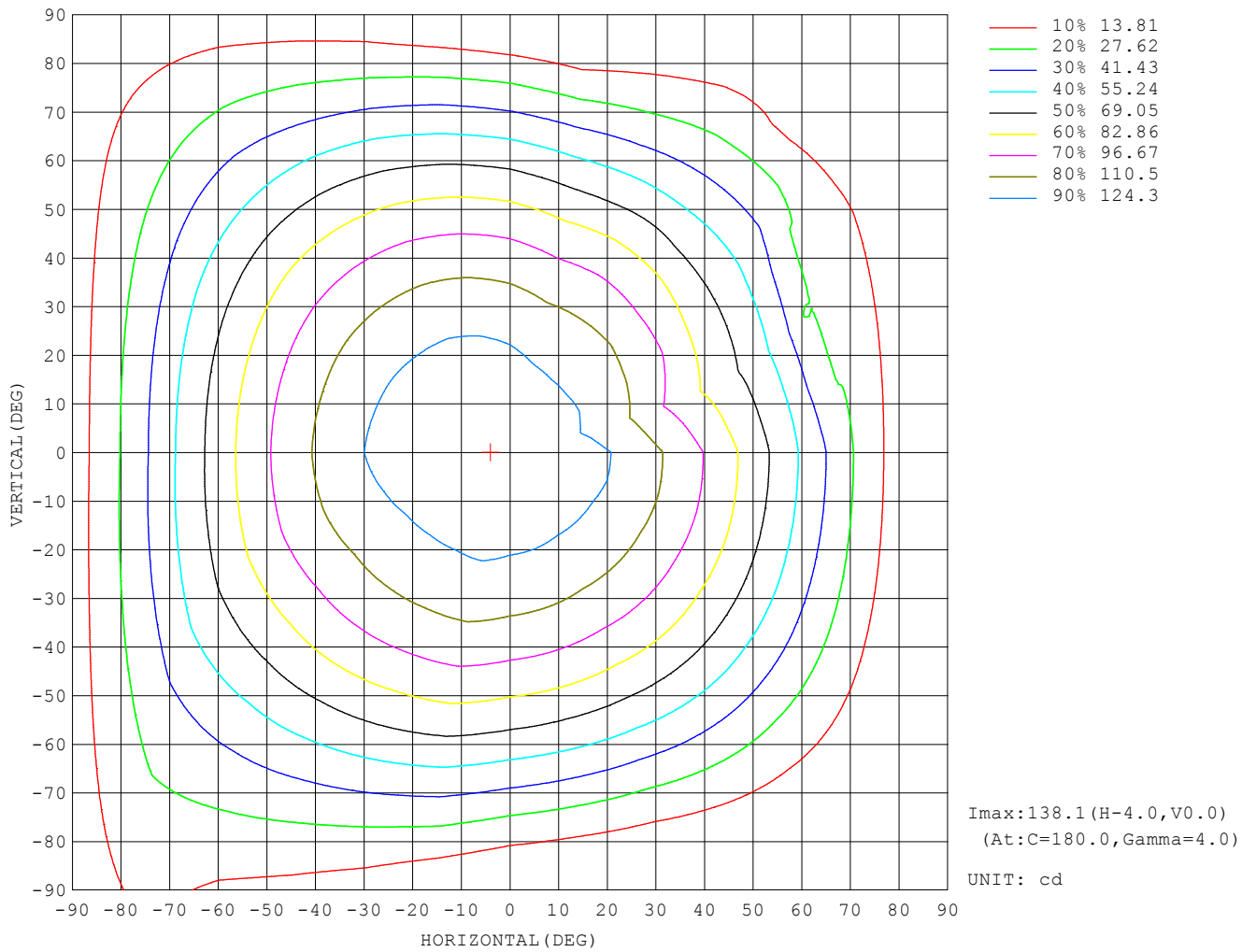
UTILIZATION FACTORS TABLE

REFLECTANCE										
Ceiling	0.8	0.8	0.8	0.7	0.7	0.7	0.5	0.5	0.5	0
Walls	0.7	0.5	0.3	0.7	0.5	0.3	0.7	0.5	0.3	0
Working plane	0.2	0.2	0.2	0.2	0.2	0.2	0.2	0.2	0.2	0
ROOM INDEX	UTILIZATION FACTORS (PERCENT) $k(RI) \times RCR = 5$									
$k = 0.60$	56	44	37	55	44	37	54	43	37	30
0.80	66	54	46	65	54	46	63	53	46	39
1.00	74	63	55	73	62	55	71	64	54	47
1.25	81	71	63	80	70	63	77	68	62	54
1.50	86	76	69	85	75	68	81	73	67	59
2.00	93	84	78	91	83	77	88	81	75	67
2.50	97	89	83	95	88	82	91	85	80	71
3.00	101	94	88	98	92	87	94	89	84	75
4.00	105	99	94	102	97	92	98	93	90	80
5.00	107	102	98	105	100	96	100	96	93	83
ROOM INDEX	UF(total)									Direct
According to DIN EN 13032-2 2004			Suspended				SHRNOM = 1.25			

C Range: 0 - 360DEG
 C Interval: 15.0DEG
 Test Speed: HIGH
 Temperature: 25.3°C
 Operators: DAMIN
 Test Date: 2023-08-11

Range: 0 - 180DEG
 Interval: 1.0DEG
 Test System: EVERFINE GO-2000B_V1 SYSTEM V2.00.471
 Humidity: 65.0%
 Test Distance: 4.880m [K=1.0000]
 Remarks:

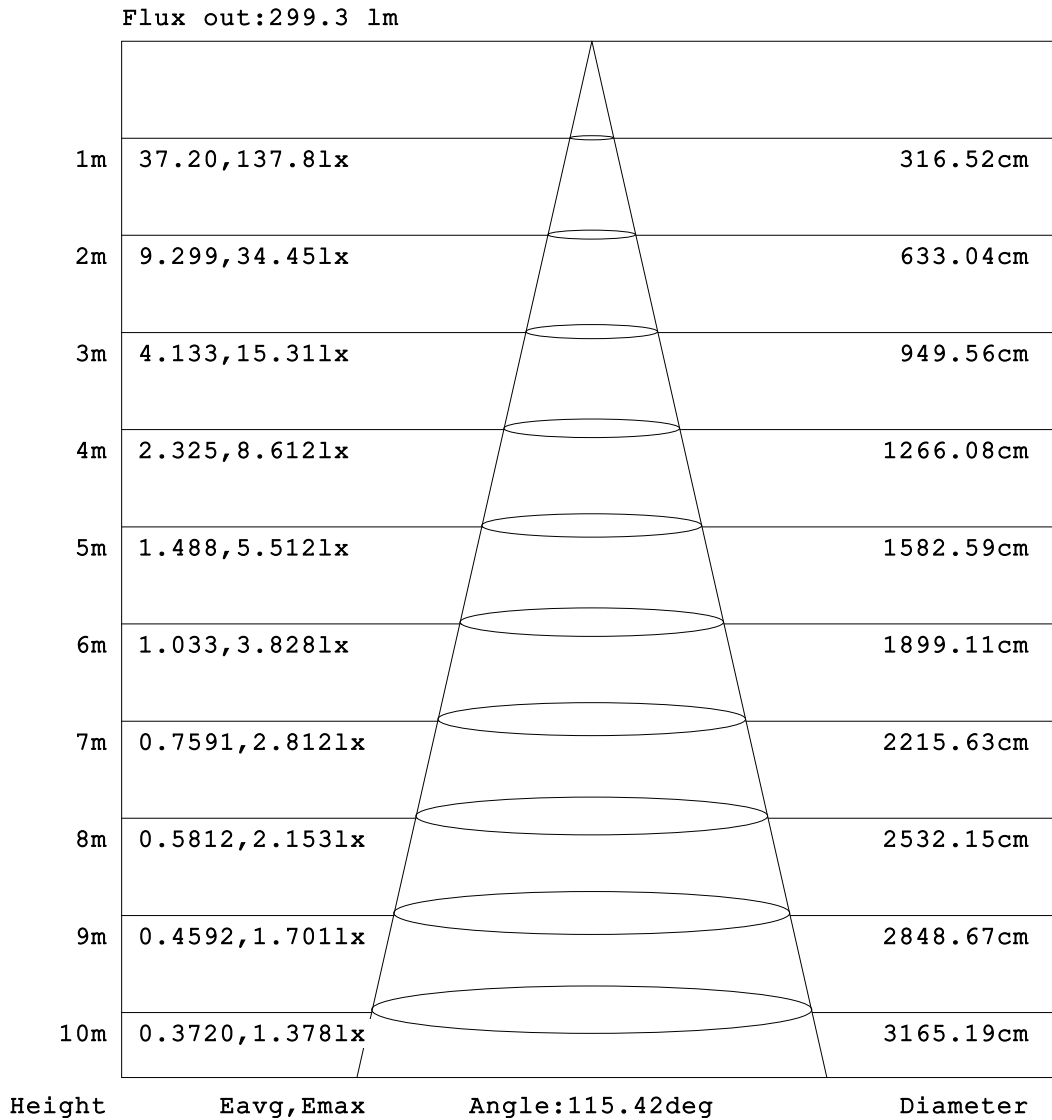
ISOCANDELA DIAGRAM



C Range: 0 - 360DEG
 C Interval: 15.0DEG
 Test Speed: HIGH
 Temperature: 25.3°C
 Operators: DAMIN
 Test Date: 2023-08-11

Range: 0 - 180DEG
 Interval: 1.0DEG
 Test System: EVERFINE GO-2000B_V1 SYSTEM V2.00.471
 Humidity: 65.0%
 Test Distance: 4.880m [K=1.0000]
 Remarks:

AAI Figure

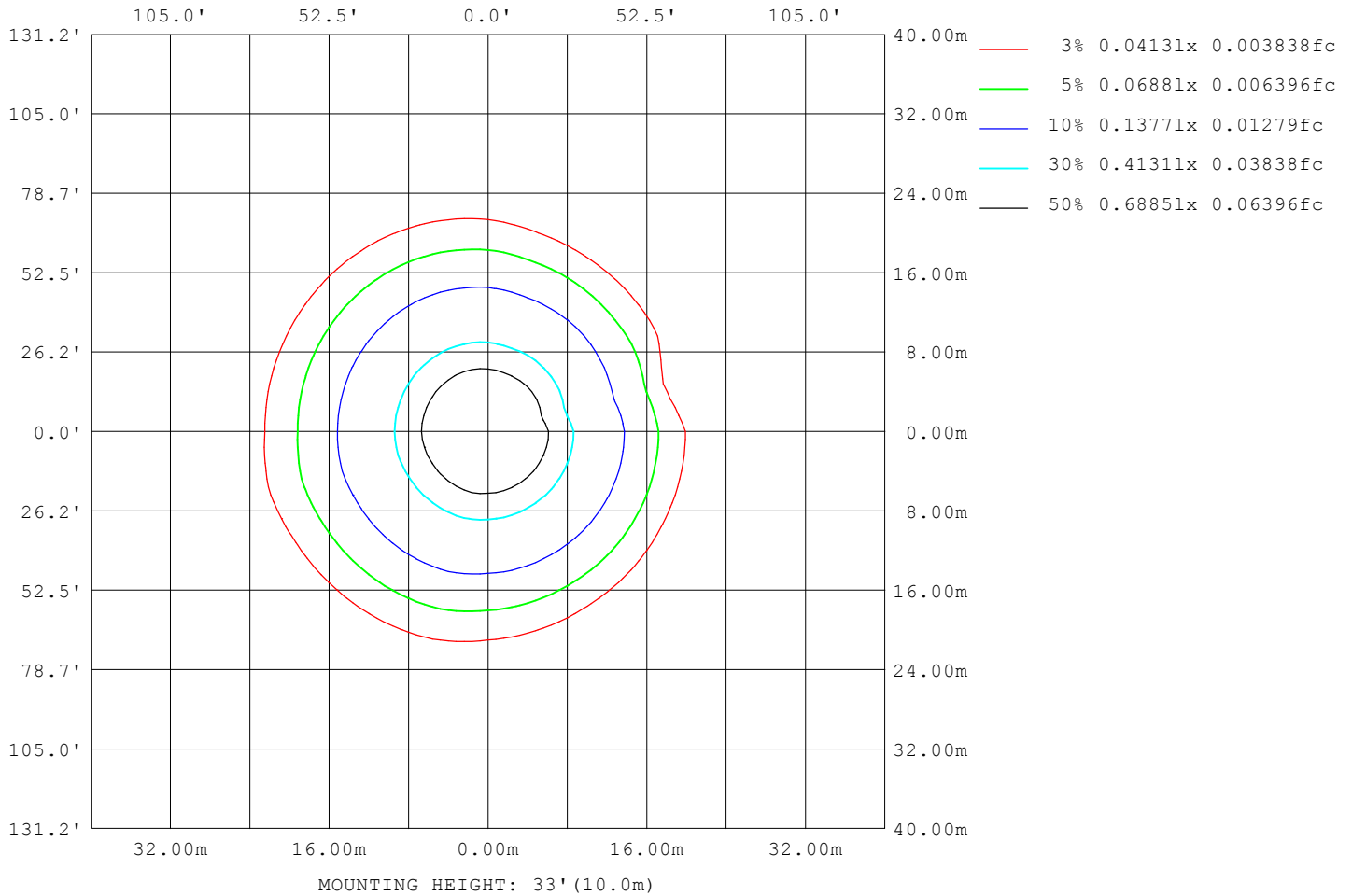


Note:The Curves indicate the illuminated area and the average illumination when the luminaire is at different distance.

C Range: 0 - 360DEG
 C Interval: 15.0DEG
 Test Speed: HIGH
 Temperature:25.3°C
 Operators:DAMIN
 Test Date:2023-08-11

Range: 0 - 180DEG
 Interval: 1.0DEG
 Test System:EVERFINE GO-2000B_V1 SYSTEM V2.00.471
 Humidity:65.0%
 Test Distance:4.880m [K=1.0000]
 Remarks:

ISOLUX DIAGRAM



C Range: 0 - 360DEG
 C Interval: 15.0DEG
 Test Speed: HIGH
 Temperature: 25.3°C
 Operators: DAMIN
 Test Date: 2023-08-11

Range: 0 - 180DEG
 Interval: 1.0DEG
 Test System: EVERFINE GO-2000B_V1 SYSTEM V2.00.471
 Humidity: 65.0%
 Test Distance: 4.880m [K=1.0000]
 Remarks:

LED Avg.L Report

NAME: LED Strip	TYPE: Indoor lighting	WEIGHT: 20g
SPEC.: 2835 080LED	DIM.: 500*8*1.2MM	SERIAL No.: 20230808001
MFR.: EVERFINE	SUR.: 500*8MM	Shielding Angle:

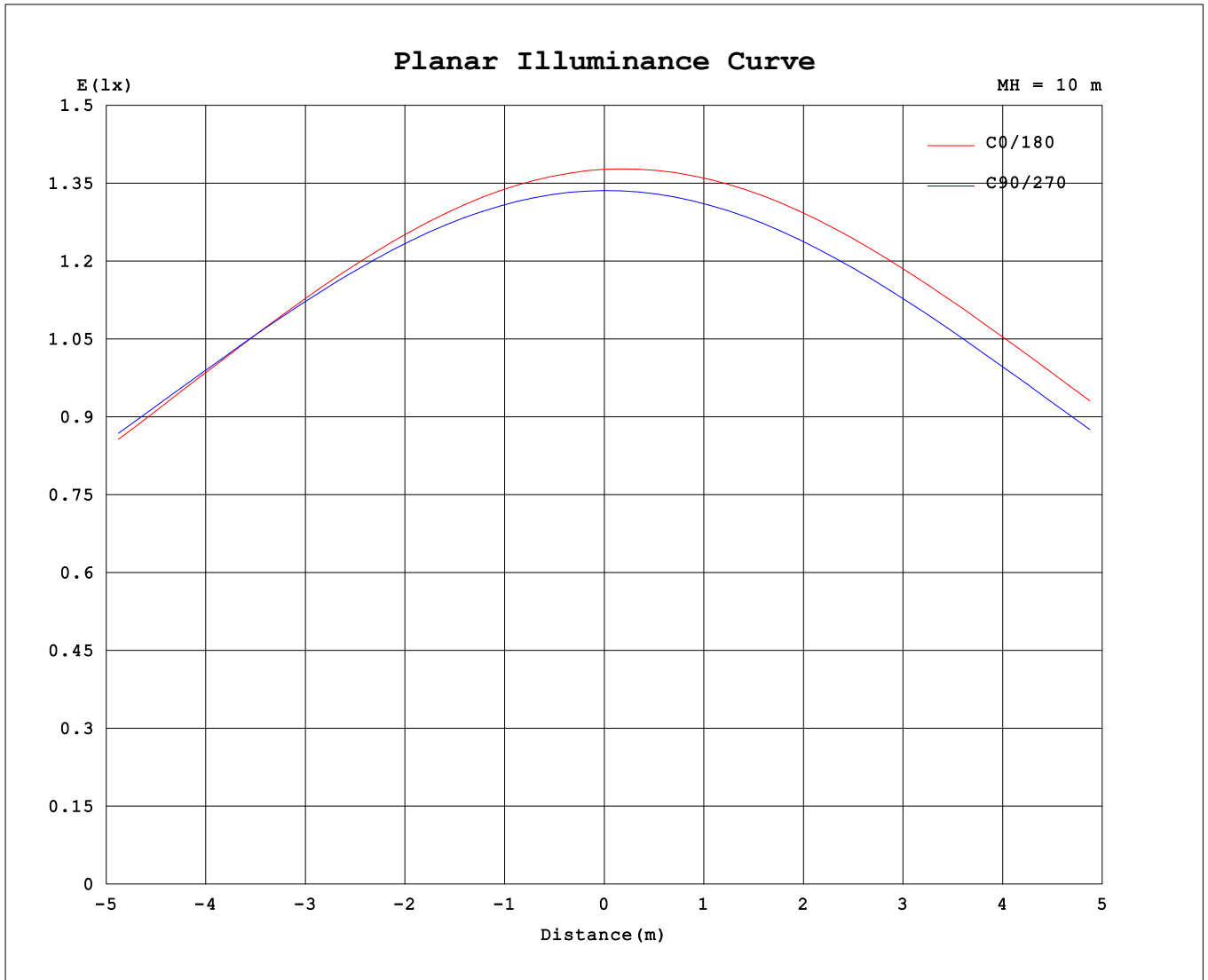
AvgL	cd/m2
L_0~180 (65) av	15595
L_0~180 (75) av	13891
L_0~180 (85) av	14047
L_90~270 (65) av	15506
L_90~270 (75) av	13695
L_90~270 (85) av	10115
L_45 (65) av	15370
L_45 (75) av	14121
L_45 (85) av	16006

Standard: GB/T 29293-2012

C Range: 0 - 360DEG
 C Interval: 15.0DEG
 Test Speed: HIGH
 Temperature:25.3℃
 Operators:DAMIN
 Test Date:2023-08-11

Range: 0 - 180DEG
 Interval: 1.0DEG
 Test System:EVERFINE GO-2000B_V1 SYSTEM V2.00.471
 Humidity:65.0%
 Test Distance:4.880m [K=1.0000]
 Remarks:

Planar Illuminance Curve



C Range: 0 - 360DEG
 C Interval: 15.0DEG
 Test Speed: HIGH
 Temperature: 25.3°C
 Operators: DAMIN
 Test Date: 2023-08-11

Range: 0 - 180DEG
 Interval: 1.0DEG
 Test System: EVERFINE GO-2000B_V1 SYSTEM V2.00.471
 Humidity: 65.0%
 Test Distance: 4.880m [K=1.0000]
 Remarks:

LUMINOUS DISTRIBUTION INTENSITY DATA

Table--1

UNIT: cd

C (DEG) \ □ (DEG)	0	15	30	45	60	75	90	105	120	135	150	165	180	195	210	225	240	255	270
0	138	137	136	135	135	134	134	133	132	132	132	133	138	137	136	135	135	134	134
5	136	136	134	134	134	133	133	133	132	132	133	134	138	137	136	135	135	134	133
10	134	133	132	132	131	132	131	132	131	131	132	133	137	137	135	135	134	133	132
15	130	130	129	128	128	129	129	130	129	130	130	132	136	135	134	133	132	131	129
20	125	125	124	124	124	125	125	127	126	127	128	130	133	132	131	130	129	128	126
25	119	119	119	119	119	120	121	123	123	123	124	126	129	128	127	126	126	124	122
30	113	113	112	112	113	114	115	118	118	118	119	122	124	123	123	122	121	119	116
35	105	105	105	105	105	107	109	112	112	113	114	117	118	117	117	116	115	113	110
40	96.1	96.6	96.3	96.8	97.4	99.4	101	105	105	106	107	110	112	111	110	109	108	106	103
45	86.6	87.2	87.0	87.7	88.4	90.6	92.8	96.7	97.2	98.5	99.9	103	104	103	103	102	101	98.2	94.8
50	76.3	76.8	76.7	77.7	78.5	81.0	83.5	87.9	88.6	90.0	91.7	95.1	95.2	94.6	94.3	93.3	92.0	89.4	85.9
55	65.2	65.4	65.6	66.6	67.8	70.3	73.4	78.2	79.3	80.8	82.6	86.0	85.7	85.2	84.9	83.9	82.5	79.7	76.0
60	53.6	53.7	54.0	55.0	56.3	59.2	62.5	67.5	69.2	70.6	72.9	76.8	75.4	75.1	74.8	73.7	72.1	69.3	65.1
65	41.5	41.5	41.8	42.9	44.3	47.4	51.1	56.4	58.6	60.1	62.6	66.6	64.0	64.1	63.7	62.8	61.2	58.1	53.8
70	29.1	29.3	29.3	30.7	31.8	35.4	39.0	44.9	47.2	49.3	51.8	56.3	52.3	52.4	51.3	50.6	49.4	46.4	41.9
75	17.7	17.8	17.7	18.9	20.0	23.3	26.9	33.0	35.7	38.3	41.1	44.9	39.9	40.4	40.3	38.4	36.8	34.0	29.8
80	8.33	8.41	8.29	8.97	9.74	12.3	15.6	21.4	25.0	27.8	30.8	34.3	28.1	28.0	28.3	26.8	24.5	21.8	18.0
85	2.74	2.85	2.84	3.13	3.29	4.33	6.44	11.3	15.6	18.5	21.3	24.9	16.8	16.8	17.1	16.0	14.1	10.5	7.67
90	0.83	0.89	0.96	1.06	1.06	0.96	0.99	3.93	8.07	10.8	12.4	16.3	7.77	7.71	8.02	7.28	5.83	3.51	1.39
95	0.70	0.67	0.68	0.65	0.60	0.48	0.45	0.75	3.91	5.39	7.17	9.84	2.68	2.58	2.62	2.04	1.28	0.61	0.47
100	0.69	0.65	0.64	0.60	0.55	0.51	0.48	0.50	2.65	1.92	3.73	5.36	0.82	0.81	0.79	0.72	0.56	0.49	0.49
105	0.70	0.68	0.66	0.65	0.61	0.60	0.55	0.52	1.16	1.80	2.67	3.22	0.56	0.60	0.62	0.62	0.60	0.55	0.57
110	0.76	0.75	0.72	0.72	0.69	0.68	0.64	0.60	0.61	1.27	2.35	2.64	0.60	0.61	0.64	0.62	0.64	0.62	0.66
115	0.82	0.82	0.80	0.80	0.78	0.77	0.73	0.69	0.66	0.78	1.78	2.45	0.67	0.67	0.69	0.68	0.71	0.71	0.75
120	0.89	0.89	0.88	0.88	0.86	0.86	0.82	0.78	0.74	0.75	0.90	1.64	0.75	0.75	0.76	0.76	0.78	0.79	0.84
125	0.97	0.97	0.97	0.97	0.95	0.94	0.90	0.86	0.82	0.82	0.83	0.97	0.83	0.83	0.84	0.84	0.86	0.88	0.92
130	1.05	1.05	1.05	1.05	1.03	1.02	0.99	0.95	0.90	0.90	0.86	0.87	0.91	0.91	0.92	0.92	0.94	0.97	1.01
135	1.12	1.14	1.13	1.13	1.11	1.10	1.07	1.03	0.99	0.98	0.94	0.92	0.99	0.99	1.00	1.00	1.03	1.05	1.08
140	1.19	1.21	1.20	1.21	1.19	1.18	1.14	1.11	1.09	1.07	1.02	0.99	1.08	1.07	1.08	1.08	1.11	1.12	1.16
145	1.26	1.29	1.27	1.28	1.26	1.25	1.22	1.19	1.17	1.17	1.11	1.07	1.16	1.15	1.16	1.16	1.19	1.20	1.23
150	1.33	1.36	1.34	1.35	1.33	1.32	1.29	1.26	1.26	1.27	1.21	1.14	1.24	1.23	1.24	1.24	1.26	1.27	1.30
155	1.40	1.42	1.41	1.41	1.39	1.39	1.36	1.34	1.35	1.36	1.31	1.24	1.32	1.31	1.32	1.32	1.34	1.34	1.37
160	1.46	1.48	1.46	1.46	1.44	1.45	1.41	1.40	1.44	1.46	1.41	1.35	1.40	1.38	1.39	1.38	1.40	1.41	1.43
165	1.52	1.53	1.51	1.52	1.50	1.50	1.47	1.46	1.54	1.55	1.52	1.49	1.48	1.45	1.46	1.45	1.47	1.46	1.48
170	1.57	1.58	1.56	1.56	1.54	1.55	1.52	1.52	1.62	1.66	1.64	1.65	1.54	1.52	1.53	1.52	1.53	1.52	1.53
175	1.60	1.61	1.59	1.59	1.57	1.58	1.56	1.56	1.67	1.72	1.77	1.82	1.60	1.57	1.58	1.57	1.57	1.56	1.57
180	1.62	1.62	1.60	1.60	1.60	1.60	1.58	1.58	1.70	1.74	1.81	1.95	1.62	1.61	1.61	1.60	1.61	1.59	1.59

C Range: 0 - 360DEG
 C Interval: 15.0DEG
 Test Speed: HIGH
 Temperature:25.3°C
 Operators:DAMIN
 Test Date:2023-08-11

□ Range: 0 - 180DEG
 □ Interval: 1.0DEG
 Test System:EVERFINE GO-2000B_V1 SYSTEM V2.00.471
 Humidity:65.0%
 Test Distance:4.880m [K=1.0000]
 Remarks:

LUMINOUS DISTRIBUTION INTENSITY DATA

Table--2

UNIT: cd

C (DEG) \ □ (DEG)	285	300	315	330	345														
0	133	132	132	132	133														
5	132	131	131	131	131														
10	130	129	128	129	129														
15	127	126	125	126	124														
20	123	122	121	121	118														
25	118	117	116	115	111														
30	113	111	110	107	102														
35	106	105	102	99.9	93.2														
40	98.1	96.8	93.6	90.0	83.9														
45	89.6	87.4	84.8	79.7	75.0														
50	80.2	78.0	72.9	70.6	67.6														
55	69.9	66.0	64.8	60.7	57.4														
60	59.0	55.8	52.6	51.0	45.3														
65	47.4	44.0	42.1	40.1	26.9														
70	35.2	33.0	31.5	29.3	20.6														
75	23.0	22.3	21.4	18.5	16.3														
80	12.0	12.5	12.8	10.1	10.9														
85	3.99	6.74	6.96	7.71	6.28														
90	1.16	3.31	4.31	4.41	3.48														
95	0.49	1.35	2.20	2.38	1.88														
100	0.52	0.62	0.95	1.30	1.14														
105	0.60	0.68	0.77	0.94	1.04														
110	0.69	0.76	0.79	0.89	1.02														
115	0.78	0.85	0.87	0.95	1.07														
120	0.87	0.94	0.96	1.03	1.14														
125	0.95	1.02	1.05	1.11	1.24														
130	1.03	1.11	1.13	1.19	1.31														
135	1.10	1.19	1.21	1.28	1.42														
140	1.18	1.27	1.29	1.36	1.53														
145	1.24	1.34	1.37	1.44	1.63														
150	1.31	1.41	1.44	1.53	1.73														
155	1.37	1.48	1.51	1.60	1.89														
160	1.42	1.54	1.57	1.67	1.90														
165	1.47	1.60	1.64	1.73	1.92														
170	1.52	1.65	1.68	1.77	1.96														
175	1.55	1.69	1.72	1.81	1.99														
180	1.56	1.70	1.74	1.80	1.96														

C Range: 0 - 360DEG
 C Interval: 15.0DEG
 Test Speed: HIGH
 Temperature:25.3°C
 Operators:DAMIN
 Test Date:2023-08-11

□ Range: 0 - 180DEG
 □ Interval: 1.0DEG
 Test System:EVERFINE GO-2000B_V1 SYSTEM V2.00.471
 Humidity:65.0%
 Test Distance:4.880m [K=1.0000]
 Remarks: