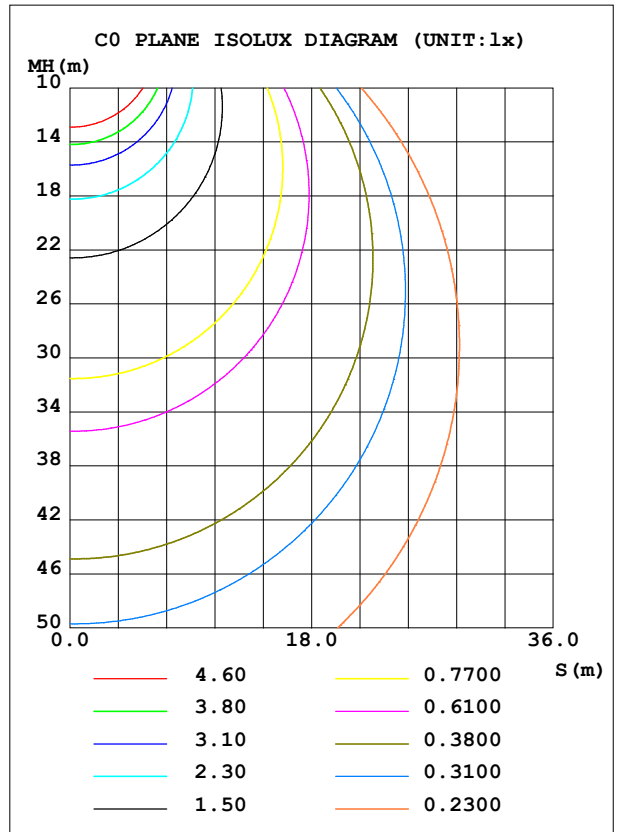
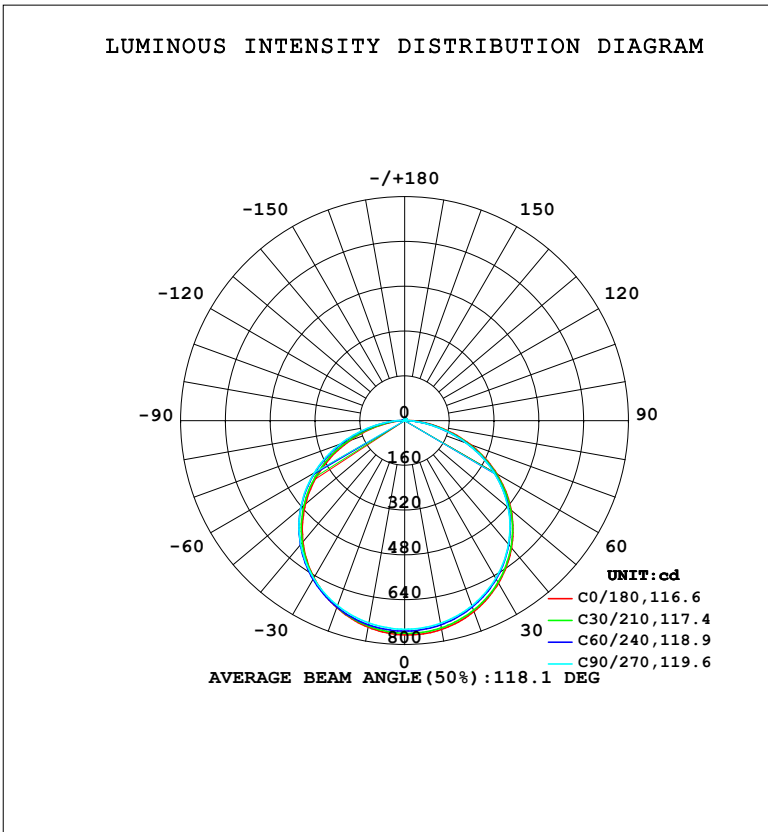


LUMINAIRE PHOTOMETRIC TEST REPORT

NAME: LED Strip	TYPE: Indoor lighting	WEIGHT: 20g
SPEC.: 2835 160LED	DIM.: 1000*8*1.2MM	SERIAL No.: 20230808018
MFR.: EVERFINE	SUR.: 1000*8MM	Shielding Angle:

DATA OF LAMP		PHOTOMETRIC DATA			
WNO5EE-24 (WCP) -HR-JK-CV-UE-EP		Imax (cd)	765.7	S/MH (C0/180)	1.26
NOMINAL POWER (W)	13.5967	LOR (%)	100.0	S/MH (C90/270)	1.30
RATED VOLTAGE (V)	DC 24V	TOTAL FLUX (lm)	2339.9	<input type="checkbox"/> UP, DN (C0-180)	0.7,49.6
NOMINAL FLUX (lm)	2339.87	CIE CLASS	DIRECT	<input type="checkbox"/> UP, DN (C180-360)	1.2,48.5
LAMPS INSIDE	1	<input type="checkbox"/> up (%)	1.9	CIBSE SHR NOM	1.25
TEST VOLTAGE (V)	DC 24V	<input type="checkbox"/> down (%)	98.1	CIBSE SHR MAX	1.35



C Range: 0 - 360DEG
 C Interval: 15.0DEG
 Test Speed: HIGH
 Temperature: 25.3°C
 Operators: DAMIN
 Test Date: 2023-08-14

Range: 0 - 180DEG
 Interval: 1.0DEG
 Test System: EVERFINE GO-2000B_V1 SYSTEM V2.00.471
 Humidity: 65.0%
 Test Distance: 4.880m [K=1.0000]
 Remarks:

ZONAL FLUX DIAGRAM

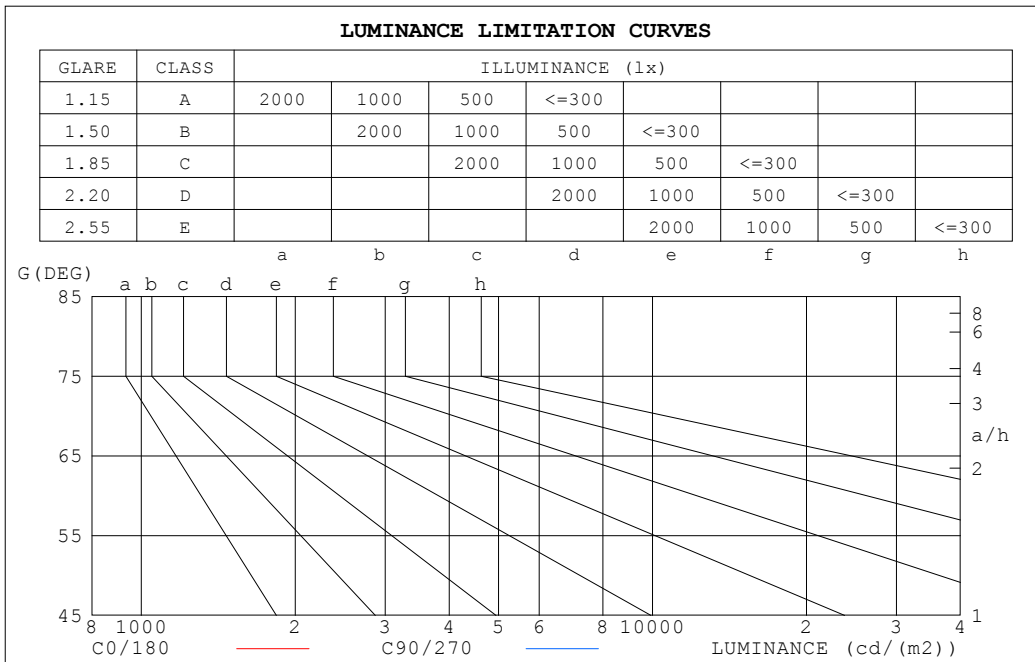
ZONAL FLUX DIAGRAM:

°	C0	C45	C90	C135	C180	C225	C270	C315	°	□ zone	□ total	%lum,lamp
10	757.4	748.6	735.3	736.7	749.7	744.7	734.3	733.5	0- 10	71.30	71.30	3.05,3.05
20	725.4	716.8	703.9	705.4	710.3	709.5	702.9	698.9	10- 20	205.4	276.7	11.8,11.8
30	670.4	663.3	651.2	652.8	648.5	652.7	650.7	643.5	20- 30	315.0	591.8	25.3,25.3
40	593.9	588.1	577.3	578.8	565.5	574.8	578.0	567.4	30- 40	386.5	978.3	41.8,41.8
50	496.9	491.8	482.6	484.0	462.5	477.0	485.0	472.5	40- 50	409.9	1388	59.3,59.3
60	381.2	374.9	367.3	368.6	341.6	360.5	373.0	359.0	50- 60	380.1	1768	75.6,75.6
70	249.5	240.6	234.0	237.3	207.5	228.5	244.7	230.6	60- 70	297.8	2066	88.3,88.3
80	114.2	102.4	97.14	101.6	79.54	94.67	111.0	100.4	70- 80	175.3	2241	95.8,95.8
90	20.09	10.36	6.687	14.14	6.918	11.24	19.86	17.62	80- 90	53.74	2295	98.1,98.1
100	3.715	2.731	2.920	5.663	3.082	4.002	3.633	13.30	90-100	8.912	2304	98.5,98.5
110	3.635	3.505	3.784	3.784	3.694	3.749	4.139	13.87	100-110	6.345	2310	98.7,98.7
120	4.273	4.383	4.701	4.375	4.626	4.691	4.994	13.92	110-120	6.009	2316	99,99
130	5.117	5.289	5.571	5.273	5.533	5.607	5.798	13.70	120-130	5.918	2322	99.3,99.3
140	6.021	6.197	6.418	6.155	6.401	6.471	6.631	13.22	130-140	5.590	2328	99.5,99.5
150	6.906	7.063	7.195	6.989	7.208	7.262	7.328	12.29	140-150	4.875	2333	99.7,99.7
160	7.779	7.832	7.879	7.737	7.981	7.965	7.965	10.26	150-160	3.805	2337	99.9,99.9
170	8.516	8.485	8.443	8.382	8.636	8.554	8.490	9.738	160-170	2.425	2339	100,100
180	8.969	8.894	8.780	9.073	8.973	8.876	8.796	9.188	170-180	0.8417	2340	100,100
DEG	LUMINOUS INTENSITY:cd									UNIT:lm		

C Range: 0 - 360DEG
 C Interval: 15.0DEG
 Test Speed: HIGH
 Temperature:25.3°C
 Operators:DAMIN
 Test Date:2023-08-14

□ Range: 0 - 180DEG
 □ Interval: 1.0DEG
 Test System:EVERFINE GO-2000B_V1 SYSTEM V2.00.471
 Humidity:65.0%
 Test Distance:4.880m [K=1.0000]
 Remarks:

LUMINANCE LIMITATION CURVES



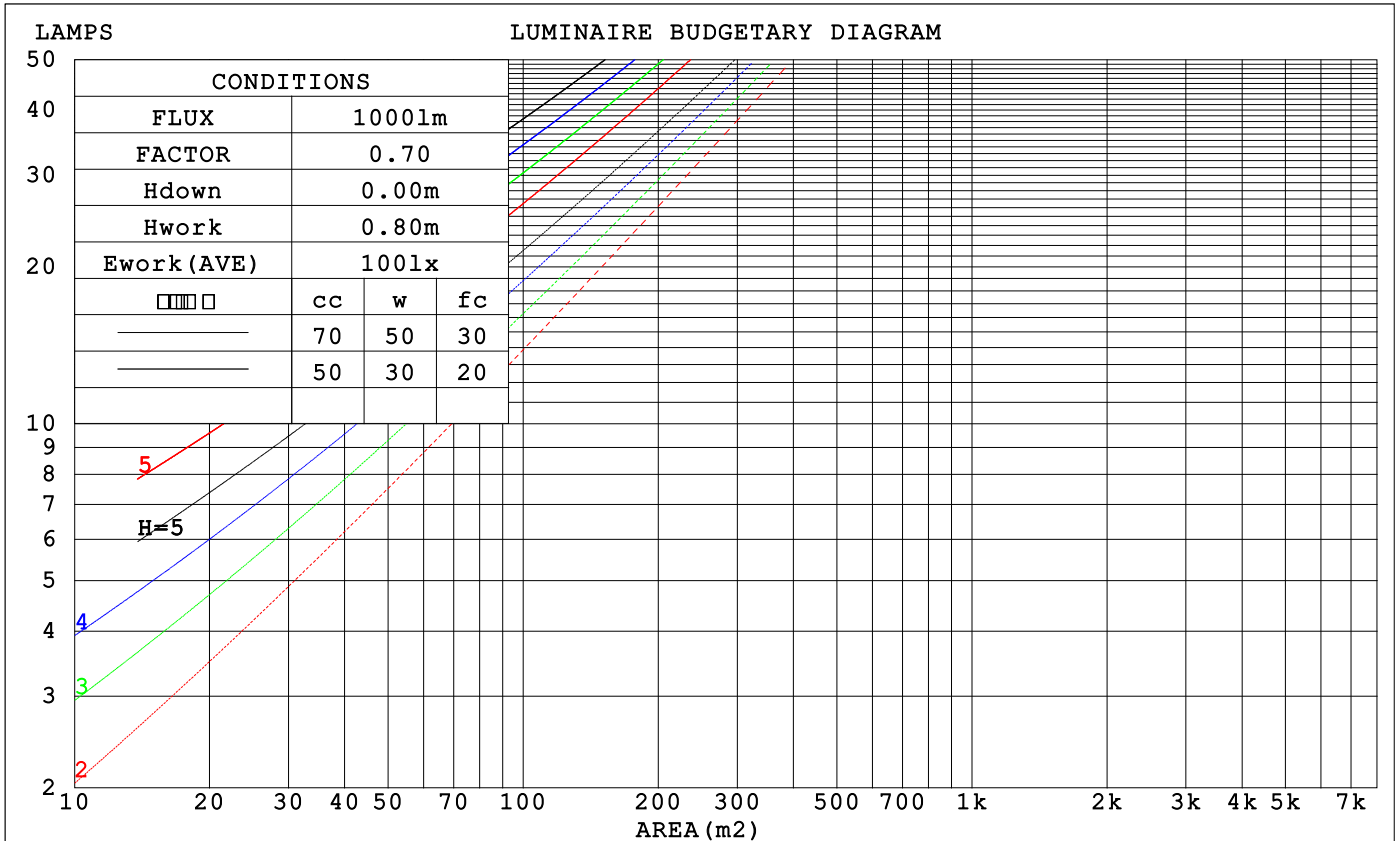
LUMINANCE cd/(m2)		
G (DEG)	C0/180	C90/270
85	81109	58371
80	82205	69927
75	87421	79432
70	91174	85534
65	93811	89533
60	95288	91813
55	96147	93132
50	96624	93847
45	96840	94149

C Range: 0 - 360DEG
 C Interval: 15.0DEG
 Test Speed: HIGH
 Temperature: 25.3°C
 Operators: DAMIN
 Test Date: 2023-08-14

Range: 0 - 180DEG
 Interval: 1.0DEG
 Test System: EVERFINE GO-2000B_V1 SYSTEM V2.00.471
 Humidity: 65.0%
 Test Distance: 4.880m [K=1.0000]
 Remarks:

CU AND LUMINAIRE BUDGETARY ESTIMATE DIAGRAM

□cc	80%			70%			50%			30%			10%			0
□w	50%	30%	10%	50%	30%	10%	50%	30%	10%	50%	30%	10%	50%	30%	10%	0
□fc	20%			20%			20%			20%			20%			0
RCR	RCR:Room Cavity Ratio			Coefficients of Utilization(CU)												
0.0	1.19	1.19	1.19	1.16	1.16	1.16	1.10	1.10	1.10	1.05	1.05	1.05	1.00	1.00	1.00	.98
1.0	1.03	.98	.94	1.00	.96	.93	.96	.93	.89	.92	.89	.86	.88	.85	.83	.81
2.0	.89	.82	.76	.87	.81	.75	.83	.78	.73	.80	.75	.71	.76	.73	.69	.67
3.0	.78	.70	.63	.76	.69	.62	.73	.66	.61	.70	.64	.60	.67	.62	.58	.56
4.0	.69	.60	.53	.67	.59	.53	.65	.57	.52	.62	.56	.51	.60	.54	.50	.48
5.0	.61	.52	.46	.60	.52	.45	.58	.50	.44	.56	.49	.44	.54	.48	.43	.41
6.0	.55	.46	.40	.54	.46	.39	.52	.44	.39	.50	.43	.38	.48	.42	.38	.36
7.0	.50	.41	.35	.49	.41	.35	.47	.40	.34	.46	.39	.34	.44	.38	.33	.31
8.0	.46	.37	.31	.45	.37	.31	.43	.36	.30	.42	.35	.30	.40	.34	.30	.28
9.0	.42	.33	.28	.41	.33	.28	.40	.32	.27	.38	.32	.27	.37	.31	.27	.25
10.0	.38	.30	.25	.38	.30	.25	.37	.30	.25	.36	.29	.25	.35	.29	.24	.23



C Range: 0 - 360DEG
 C Interval: 15.0DEG
 Test Speed: HIGH
 Temperature:25.3°C
 Operators:DAMIN
 Test Date:2023-08-14

□ Range: 0 - 180DEG
 □ Interval: 1.0DEG
 Test System:EVERFINE GO-2000B_V1 SYSTEM V2.00.471
 Humidity:65.0%
 Test Distance:4.880m [K=1.0000]
 Remarks:

WEC AND CCEC

□cc	80%			70%			50%			30%			10%			0
□w	50%	30%	10%	50%	30%	10%	50%	30%	10%	50%	30%	10%	50%	30%	10%	0
□fc	20%			20%			20%			20%			20%			0
RCR	RCR:Room Cavity Ratio						Wall Exitance Coefficients(WEC)									
0.0	.319	.182	.058	.312	.178	.056	.297	.171	.054	.284	.164	.053	.272	.158	.051	
1.0	.298	.164	.050	.292	.161	.049	.279	.155	.048	.267	.150	.047	.256	.145	.046	
2.0	.275	.146	.044	.269	.144	.043	.258	.140	.042	.247	.135	.042	.237	.131	.041	
3.0	.253	.132	.039	.248	.130	.038	.238	.126	.038	.228	.123	.037	.220	.119	.036	
4.0	.234	.119	.034	.229	.117	.034	.220	.114	.034	.211	.112	.033	.204	.109	.033	
5.0	.216	.108	.031	.212	.107	.031	.204	.104	.030	.196	.102	.030	.189	.100	.030	
6.0	.201	.099	.028	.197	.098	.028	.190	.096	.028	.183	.094	.027	.177	.092	.027	
7.0	.187	.092	.026	.184	.091	.026	.178	.089	.025	.171	.087	.025	.166	.085	.025	
8.0	.175	.085	.024	.172	.084	.024	.167	.082	.023	.161	.081	.023	.156	.079	.023	
9.0	.165	.079	.022	.162	.078	.022	.157	.077	.022	.152	.075	.021	.147	.074	.021	
10.0	.165	.079	.022	.162	.078	.022	.157	.077	.022	.152	.075	.021	.147	.074	.021	

□cc	80%			70%			50%			30%			10%			0
□w	50%	30%	10%	50%	30%	10%	50%	30%	10%	50%	30%	10%	50%	30%	10%	0
□fc	20%			20%			20%			20%			20%			0
RCR	RCR:Room Cavity Ratio						Ceiling Cavity Exitance Coefficients(CCEC)									
0.0	.205	.205	.205	.175	.175	.175	.120	.120	.120	.069	.069	.069	.022	.022	.022	
1.0	.196	.171	.148	.167	.147	.128	.115	.101	.088	.066	.058	.051	.021	.019	.017	
2.0	.188	.147	.112	.161	.126	.097	.110	.087	.068	.064	.051	.040	.020	.016	.013	
3.0	.180	.129	.088	.155	.111	.077	.106	.077	.054	.061	.045	.032	.020	.015	.010	
4.0	.173	.116	.073	.148	.100	.063	.102	.070	.044	.059	.041	.026	.019	.013	.009	
5.0	.165	.106	.062	.142	.091	.054	.098	.064	.038	.057	.038	.022	.018	.012	.007	
6.0	.158	.097	.054	.136	.084	.047	.094	.059	.033	.054	.035	.020	.018	.011	.007	
7.0	.151	.091	.048	.130	.078	.042	.090	.055	.030	.052	.032	.018	.017	.011	.006	
8.0	.145	.085	.044	.125	.074	.038	.086	.052	.027	.050	.030	.016	.016	.010	.005	
9.0	.139	.080	.040	.119	.069	.035	.083	.049	.025	.048	.029	.015	.016	.009	.005	
10.0	.133	.076	.037	.115	.066	.033	.079	.046	.023	.046	.027	.014	.015	.009	.005	

C Range: 0 - 360DEG
 C Interval: 15.0DEG
 Test Speed: HIGH
 Temperature:25.3°C
 Operators:DAMIN
 Test Date:2023-08-14

□ Range: 0 - 180DEG
 □ Interval: 1.0DEG
 Test System:EVERFINE GO-2000B_V1 SYSTEM V2.00.471
 Humidity:65.0%
 Test Distance:4.880m [K=1.0000]
 Remarks:

UGR(Unified Glare Rating) Table

ceiling/cavity	0.7	0.7	0.5	0.5	0.3	0.7	0.7	0.5	0.5	0.3
walls	0.5	0.3	0.5	0.3	0.3	0.5	0.3	0.5	0.3	0.3
working plane	0.2	0.2	0.2	0.2	0.2	0.2	0.2	0.2	0.2	0.2
Room dimensions	Viewed crosswise					Viewed endwise				
x = 2H y = 2H	25.9	27.4	26.2	27.6	27.9	25.7	27.2	26.0	27.5	27.7
3H	27.5	28.9	27.9	29.2	29.5	27.3	28.7	27.6	29.0	29.3
4H	28.2	29.6	28.6	29.9	30.2	27.9	29.3	28.3	29.6	29.9
6H	28.8	30.0	29.1	30.3	30.6	28.4	29.6	28.7	29.9	30.3
8H	28.9	30.1	29.3	30.5	30.8	28.5	29.7	28.9	30.0	30.4
12H	29.1	30.2	29.4	30.6	30.9	28.6	29.7	29.0	30.1	30.4
4H 2H	26.5	27.8	26.8	28.1	28.4	26.4	27.7	26.7	28.0	28.3
3H	28.3	29.5	28.7	29.8	30.2	28.1	29.3	28.5	29.6	30.0
4H	29.1	30.2	29.6	30.6	31.0	28.9	30.0	29.3	30.3	30.7
6H	29.8	30.8	30.2	31.1	31.5	29.5	30.4	29.9	30.8	31.2
8H	30.0	30.9	30.5	31.3	31.8	29.6	30.5	30.1	30.9	31.4
12H	30.2	31.0	30.7	31.5	31.9	29.7	30.6	30.2	31.0	31.4
8H 4H	29.4	30.3	29.9	30.7	31.1	29.2	30.1	29.6	30.5	30.9
6H	30.2	30.9	30.7	31.4	31.9	29.9	30.6	30.4	31.1	31.5
8H	30.5	31.2	31.0	31.7	32.1	30.1	30.8	30.6	31.3	31.8
12H	30.8	31.4	31.3	31.9	32.4	30.3	30.9	30.8	31.4	31.9
12H 4H	29.4	30.2	29.9	30.7	31.1	29.2	30.0	29.7	30.4	30.9
6H	30.3	30.9	30.8	31.4	31.9	29.9	30.6	30.4	31.1	31.6
8H	30.6	31.2	31.1	31.7	32.2	30.2	30.8	30.8	31.3	31.8
Variations with the observer position at spacings(CIE Pub.117):										
S = 1.0H	+ 0.1 / - 0.2					+ 0.1 / - 0.2				
1.5H	+ 0.2 / - 0.3					+ 0.2 / - 0.3				
2.0H	+ 0.2 / - 0.3					+ 0.2 / - 0.4				

CIE Pub.117, 2340 lm Total Lamp Luminous Flux Correct (8log(F/F0) = 3.0)
 Area: 0.008 m2

C Range: 0 - 360DEG
 C Interval: 15.0DEG
 Test Speed: HIGH
 Temperature:25.3°C
 Operators:DAMIN
 Test Date:2023-08-14

Range: 0 - 180DEG
 Interval: 1.0DEG
 Test System:EVERFINE GO-2000B_V1 SYSTEM V2.00.471
 Humidity:65.0%
 Test Distance:4.880m [K=1.0000]
 Remarks:

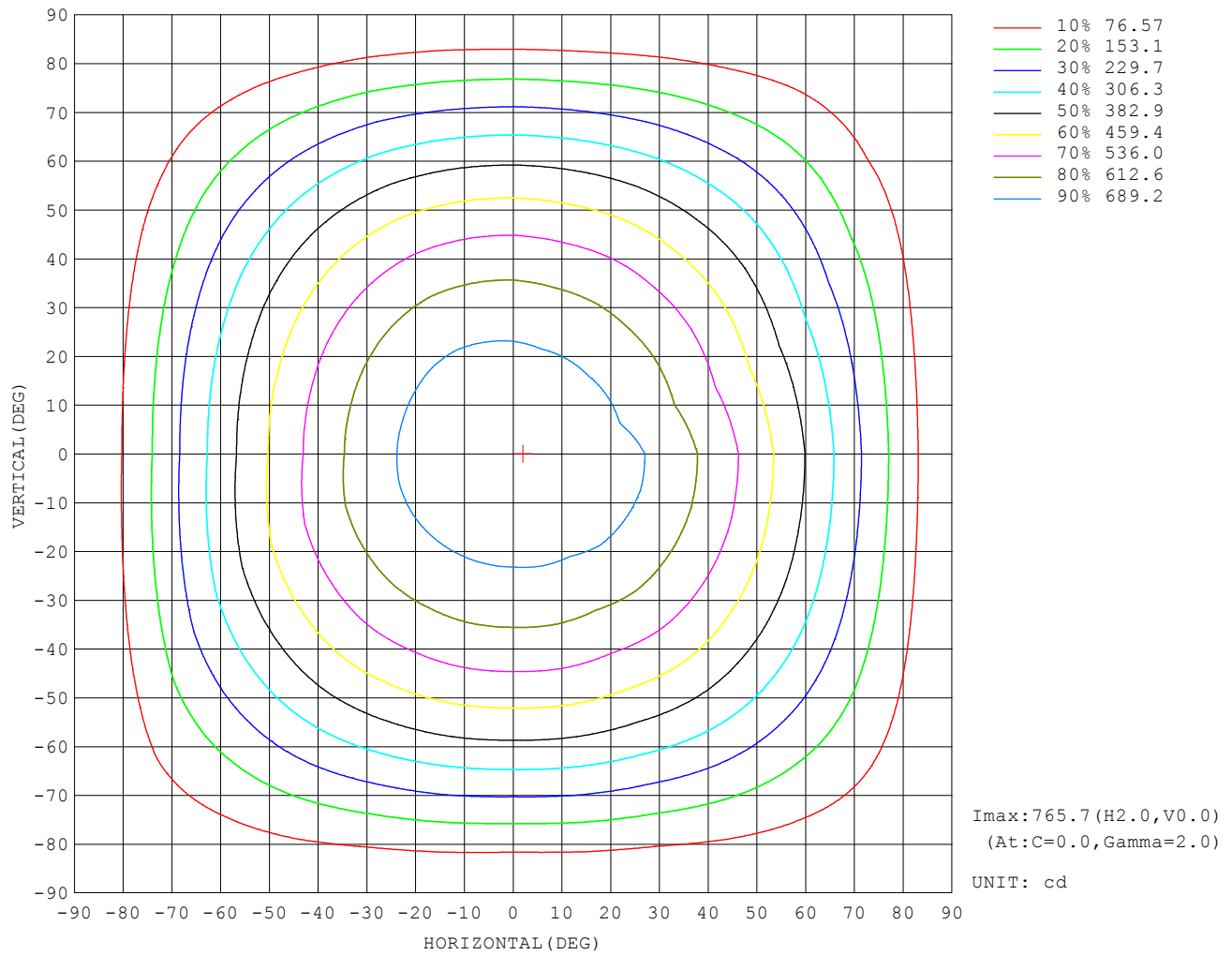
UTILIZATION FACTORS TABLE

REFLECTANCE										
Ceiling	0.8	0.8	0.8	0.7	0.7	0.7	0.5	0.5	0.5	0
Walls	0.7	0.5	0.3	0.7	0.5	0.3	0.7	0.5	0.3	0
Working plane	0.2	0.2	0.2	0.2	0.2	0.2	0.2	0.2	0.2	0
ROOM INDEX	UTILIZATION FACTORS (PERCENT) $k(RI) \times RCR = 5$									
$k = 0.60$	56	44	37	55	44	37	54	43	37	30
0.80	66	54	46	65	53	46	63	53	46	39
1.00	74	63	55	73	62	55	71	64	54	47
1.25	81	71	63	80	70	63	77	68	62	54
1.50	87	76	69	85	75	68	81	73	67	59
2.00	94	85	78	92	83	77	88	81	75	67
2.50	98	89	83	95	88	82	91	85	80	71
3.00	101	94	88	99	92	87	94	89	85	75
4.00	105	99	94	103	97	93	98	94	90	80
5.00	108	103	98	105	101	97	100	97	93	83
ROOM INDEX	UF (total)									Direct
According to DIN EN 13032-2 2004			Suspended				SHRNOM = 1.25			

C Range: 0 - 360DEG
 C Interval: 15.0DEG
 Test Speed: HIGH
 Temperature: 25.3°C
 Operators: DAMIN
 Test Date: 2023-08-14

Range: 0 - 180DEG
 Interval: 1.0DEG
 Test System: EVERFINE GO-2000B_V1 SYSTEM V2.00.471
 Humidity: 65.0%
 Test Distance: 4.880m [K=1.0000]
 Remarks:

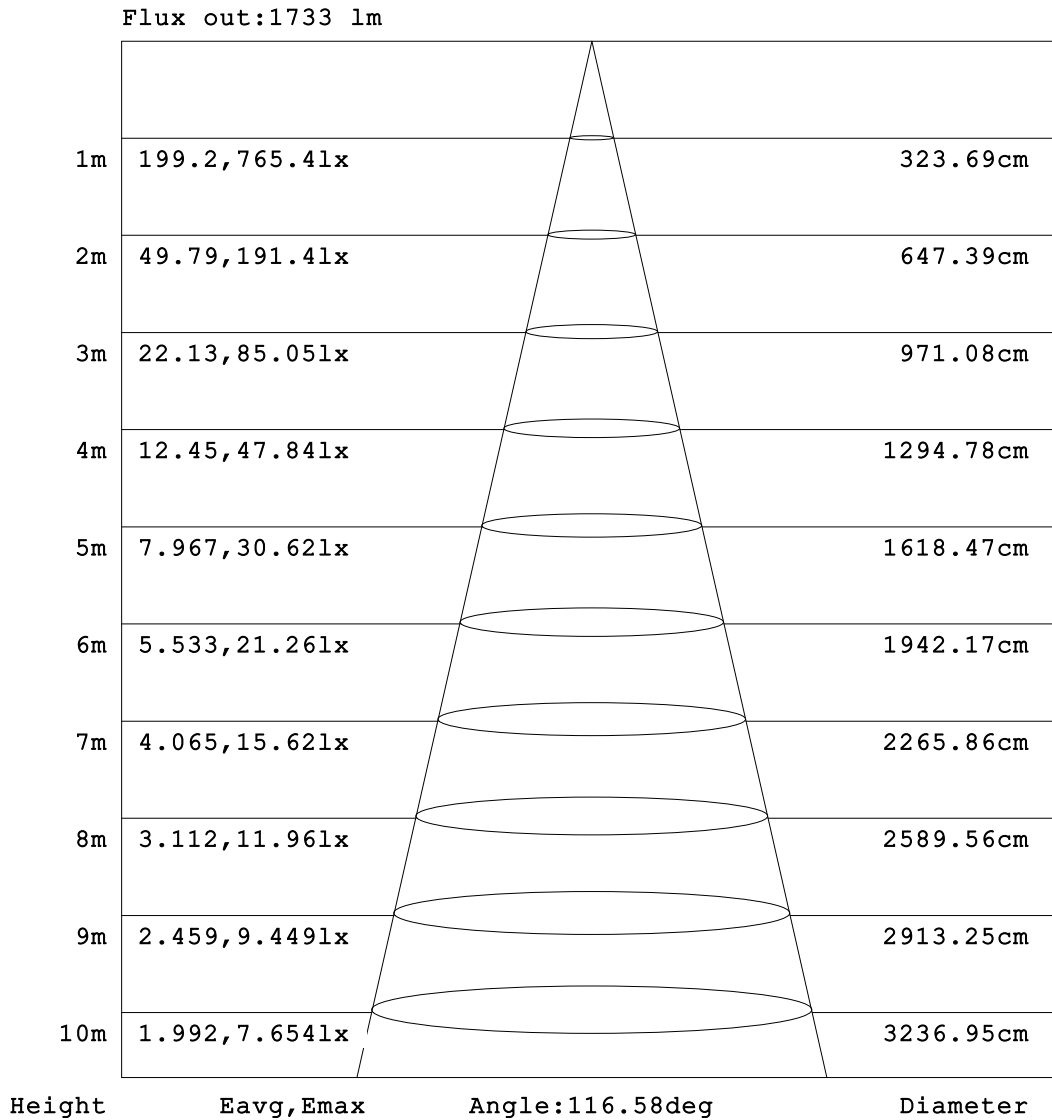
ISOCANDELA DIAGRAM



C Range: 0 - 360DEG
 C Interval: 15.0DEG
 Test Speed: HIGH
 Temperature: 25.3°C
 Operators: DAMIN
 Test Date: 2023-08-14

Range: 0 - 180DEG
 Interval: 1.0DEG
 Test System: EVERFINE GO-2000B_V1 SYSTEM V2.00.471
 Humidity: 65.0%
 Test Distance: 4.880m [K=1.0000]
 Remarks:

AAI Figure

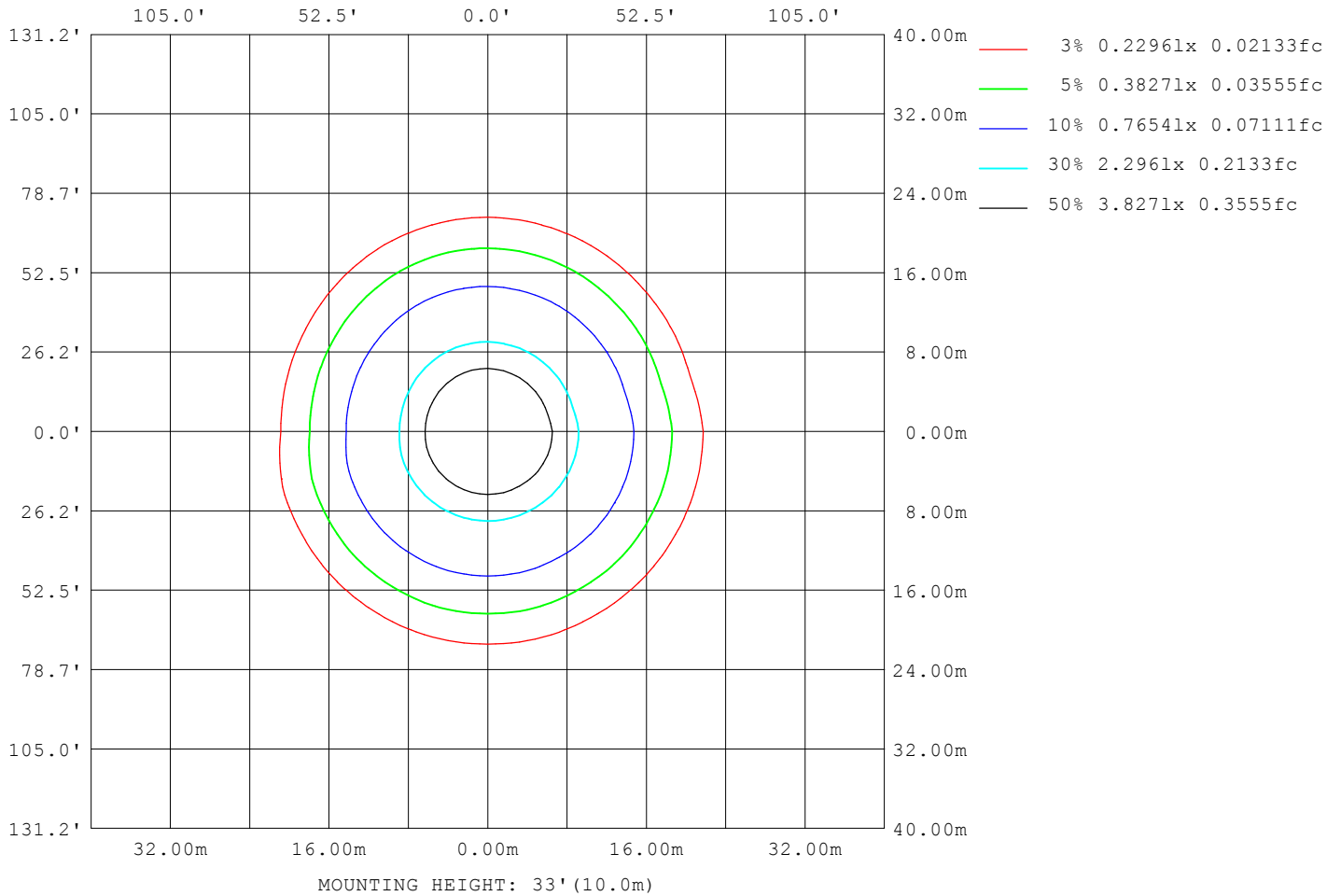


Note:The Curves indicate the illuminated area and the average illumination when the luminaire is at different distance.

C Range: 0 - 360DEG
 C Interval: 15.0DEG
 Test Speed: HIGH
 Temperature:25.3°C
 Operators:DAMIN
 Test Date:2023-08-14

Range: 0 - 180DEG
 Interval: 1.0DEG
 Test System:EVERFINE GO-2000B_V1 SYSTEM V2.00.471
 Humidity:65.0%
 Test Distance:4.880m [K=1.0000]
 Remarks:

ISOLUX DIAGRAM



C Range: 0 - 360DEG
 C Interval: 15.0DEG
 Test Speed: HIGH
 Temperature: 25.3°C
 Operators: DAMIN
 Test Date: 2023-08-14

Range: 0 - 180DEG
 Interval: 1.0DEG
 Test System: EVERFINE GO-2000B_V1 SYSTEM V2.00.471
 Humidity: 65.0%
 Test Distance: 4.880m [K=1.0000]
 Remarks:

LED Avg.L Report

NAME: LED Strip	TYPE: Indoor lighting	WEIGHT: 20g
SPEC.: 2835 160LED	DIM.: 1000*8*1.2MM	SERIAL No.: 20230808018
MFR.: EVERFINE	SUR.: 1000*8MM	Shielding Angle:

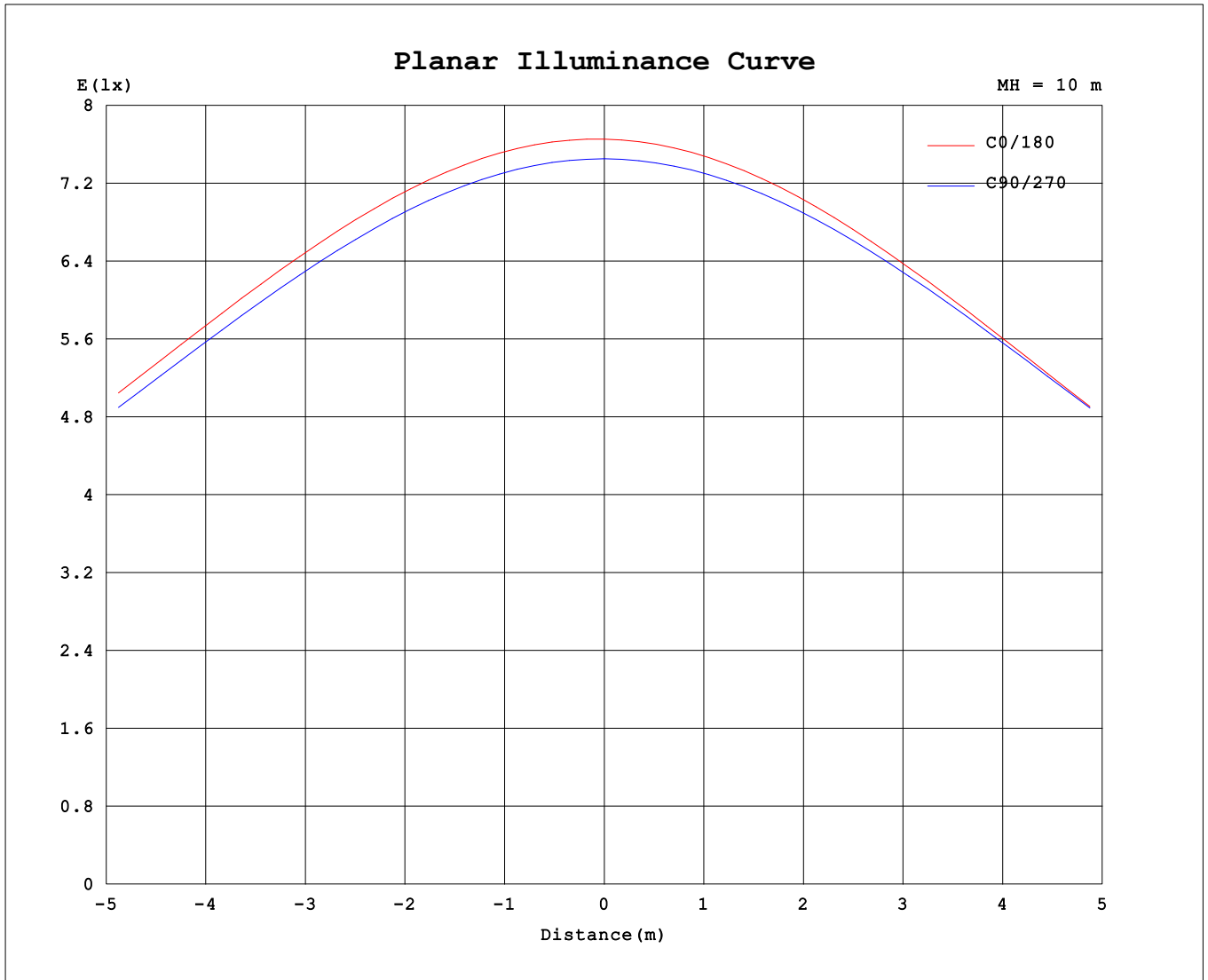
AvgL	cd/m2
L_0~180 (65) av	87666
L_0~180 (75) av	77639
L_0~180 (85) av	63393
L_90~270 (65) av	90715
L_90~270 (75) av	82518
L_90~270 (85) av	68462
L_45 (65) av	89112
L_45 (75) av	80100
L_45 (85) av	64143

Standard: GB/T 29293-2012

C Range: 0 - 360DEG
 C Interval: 15.0DEG
 Test Speed: HIGH
 Temperature:25.3°C
 Operators:DAMIN
 Test Date:2023-08-14

Range: 0 - 180DEG
 Interval: 1.0DEG
 Test System:EVERFINE GO-2000B_V1 SYSTEM V2.00.471
 Humidity:65.0%
 Test Distance:4.880m [K=1.0000]
 Remarks:

Planar Illuminance Curve



C Range: 0 - 360DEG
 C Interval: 15.0DEG
 Test Speed: HIGH
 Temperature: 25.3°C
 Operators: DAMIN
 Test Date: 2023-08-14

Range: 0 - 180DEG
 Interval: 1.0DEG
 Test System: EVERFINE GO-2000B_V1 SYSTEM V2.00.471
 Humidity: 65.0%
 Test Distance: 4.880m [K=1.0000]
 Remarks:

LUMINOUS DISTRIBUTION INTENSITY DATA

Table--1

UNIT: cd

C (DEG) \ □ (DEG)	0	15	30	45	60	75	90	105	120	135	150	165	180	195	210	225	240	255	270
0	765	764	760	758	752	748	745	744	745	746	750	753	765	764	760	758	752	748	745
5	764	764	759	756	749	746	743	742	743	744	748	750	761	759	755	754	749	745	742
10	757	757	752	749	741	738	735	735	735	737	740	742	750	748	745	745	741	737	734
15	744	744	739	736	727	725	722	722	722	724	727	728	733	731	730	730	728	724	721
20	725	725	721	717	708	706	704	704	704	705	707	709	710	709	708	710	709	706	703
25	701	701	697	693	684	683	680	680	680	682	683	684	682	681	682	684	684	682	679
30	670	671	667	663	654	654	651	652	651	653	653	654	648	648	650	653	655	653	651
35	635	636	632	628	619	620	617	618	617	618	618	619	610	609	612	616	620	619	617
40	594	595	591	588	579	580	577	578	577	579	578	578	565	566	570	575	580	579	578
45	548	549	545	543	534	535	533	534	532	534	532	533	516	517	522	528	534	535	534
50	497	498	494	492	484	485	483	484	482	484	482	482	463	464	470	477	484	485	485
55	441	441	438	436	429	430	427	429	427	429	426	427	404	406	412	421	429	431	431
60	381	381	376	375	369	370	367	369	368	369	366	367	342	344	351	361	369	373	373
65	317	315	311	309	304	305	303	304	304	304	303	303	276	279	286	296	306	309	311
70	249	248	242	241	235	237	234	237	235	237	235	237	208	211	218	228	239	243	245
75	181	179	172	171	165	167	164	167	166	168	167	169	140	143	149	160	171	176	177
80	114	111	105	102	97.7	99.2	97.1	99.6	99.5	102	101	103	79.5	80.5	85.6	94.7	105	111	111
85	56.6	53.0	47.6	44.8	40.8	41.9	40.7	43.4	43.6	45.8	45.8	48.0	31.8	32.5	34.8	40.5	49.5	55.2	54.8
90	20.1	16.7	12.6	10.4	8.44	8.99	6.69	11.2	12.4	14.1	14.8	16.1	6.92	6.90	8.42	11.2	17.5	22.2	19.9
95	7.77	5.68	3.92	3.16	2.99	3.55	2.81	4.78	6.17	7.46	8.77	8.51	3.18	3.20	3.63	5.25	10.3	16.0	7.22
100	3.71	3.14	2.83	2.73	2.80	2.89	2.92	2.88	4.81	5.66	6.06	6.55	3.08	3.04	3.05	4.00	8.84	10.9	3.63
105	3.37	3.24	3.06	3.05	3.19	3.27	3.30	3.22	3.14	5.15	5.48	5.63	3.28	3.25	3.25	4.14	7.99	5.20	3.75
110	3.64	3.53	3.48	3.51	3.65	3.73	3.78	3.69	3.59	3.78	5.37	5.47	3.69	3.69	3.72	3.75	4.77	3.92	4.14
115	3.93	3.88	3.90	3.96	4.10	4.19	4.25	4.16	4.05	3.93	4.03	5.34	4.17	4.16	4.19	4.22	4.30	4.37	4.55
120	4.27	4.26	4.32	4.38	4.55	4.64	4.70	4.61	4.50	4.38	4.29	4.22	4.63	4.63	4.66	4.69	4.76	4.82	4.99
125	4.68	4.67	4.73	4.83	4.99	5.07	5.13	5.05	4.94	4.82	4.74	4.67	5.08	5.09	5.12	5.15	5.21	5.27	5.36
130	5.12	5.13	5.19	5.29	5.43	5.51	5.57	5.49	5.39	5.27	5.19	5.13	5.53	5.55	5.58	5.61	5.66	5.72	5.80
135	5.57	5.60	5.66	5.74	5.88	5.95	6.00	5.93	5.83	5.72	5.63	5.58	5.97	6.00	6.03	6.05	6.09	6.15	6.21
140	6.02	6.05	6.12	6.20	6.31	6.37	6.42	6.36	6.26	6.15	6.07	6.02	6.40	6.42	6.46	6.47	6.51	6.56	6.63
145	6.47	6.52	6.57	6.64	6.72	6.78	6.82	6.77	6.68	6.58	6.50	6.45	6.82	6.83	6.87	6.88	6.91	6.94	6.99
150	6.91	6.97	7.02	7.06	7.13	7.18	7.19	7.15	7.08	6.99	6.92	6.87	7.21	7.23	7.26	7.26	7.29	7.31	7.33
155	7.35	7.39	7.43	7.46	7.51	7.54	7.55	7.52	7.44	7.37	7.31	7.27	7.60	7.60	7.63	7.63	7.64	7.65	7.66
160	7.78	7.80	7.81	7.83	7.86	7.88	7.88	7.86	7.80	7.74	7.69	7.66	7.98	7.95	7.97	7.96	7.98	7.97	7.96
165	8.18	8.16	8.16	8.17	8.18	8.19	8.18	8.17	8.12	8.07	8.04	8.02	8.35	8.28	8.30	8.28	8.29	8.25	8.25
170	8.52	8.50	8.47	8.49	8.46	8.47	8.44	8.44	8.41	8.38	8.35	8.35	8.64	8.57	8.58	8.55	8.55	8.50	8.49
175	8.79	8.77	8.73	8.74	8.69	8.69	8.65	8.66	8.64	8.72	8.84	8.65	8.85	8.80	8.80	8.77	8.75	8.69	8.68
180	8.97	8.93	8.89	8.89	8.83	8.83	8.78	8.78	8.97	9.07	9.32	9.35	8.97	8.92	8.90	8.88	8.86	8.80	8.80

C Range: 0 - 360DEG
 C Interval: 15.0DEG
 Test Speed: HIGH
 Temperature:25.3℃
 Operators:DAMIN
 Test Date:2023-08-14

□ Range: 0 - 180DEG
 □ Interval: 1.0DEG
 Test System:EVERFINE GO-2000B_V1 SYSTEM V2.00.471
 Humidity:65.0%
 Test Distance:4.880m [K=1.0000]
 Remarks:

LUMINOUS DISTRIBUTION INTENSITY DATA

Table--2

UNIT: cd

C (DEG) \ □ (DEG)	285	300	315	330	345														
0	744	745	746	750	753														
5	740	741	743	747	749														
10	732	733	734	737	740														
15	718	719	719	722	724														
20	699	699	699	702	703														
25	675	675	674	676	677														
30	646	646	643	645	645														
35	612	611	608	609	608														
40	573	572	567	567	566														
45	529	527	522	522	519														
50	480	478	473	471	468														
55	427	425	418	416	412														
60	369	366	359	357	353														
65	307	303	296	293	289														
70	241	237	231	227	224														
75	174	170	164	161	158														
80	108	105	100	98.2	95.1														
85	52.9	50.8	47.8	46.3	38.2														
90	20.4	19.4	17.6	16.9	14.4														
95	16.1	14.1	13.4	12.0	11.2														
100	15.8	14.1	13.3	11.9	11.3														
105	14.8	14.3	13.6	12.2	11.6														
110	14.2	14.2	13.9	12.6	12.0														
115	12.4	13.8	14.0	12.8	12.3														
120	10.9	13.6	13.9	13.0	12.6														
125	10.8	13.5	13.8	13.1	12.7														
130	10.5	13.1	13.7	13.1	12.8														
135	10.4	12.1	13.5	13.0	12.8														
140	10.4	11.1	13.2	12.9	12.8														
145	10.2	10.5	12.9	12.6	12.7														
150	10.1	10.1	12.3	12.3	12.5														
155	9.91	9.98	11.3	11.9	12.2														
160	9.70	9.79	10.3	11.1	11.7														
165	9.48	9.58	9.94	10.1	10.9														
170	9.24	9.37	9.74	9.77	9.99														
175	9.01	9.13	9.48	9.53	9.69														
180	8.85	8.90	9.19	9.21	9.37														

C Range: 0 - 360DEG
 C Interval: 15.0DEG
 Test Speed: HIGH
 Temperature: 25.3°C
 Operators: DAMIN
 Test Date: 2023-08-14

□ Range: 0 - 180DEG
 □ Interval: 1.0DEG
 Test System: EVERFINE GO-2000B_V1 SYSTEM V2.00.471
 Humidity: 65.0%
 Test Distance: 4.880m [K=1.0000]
 Remarks: