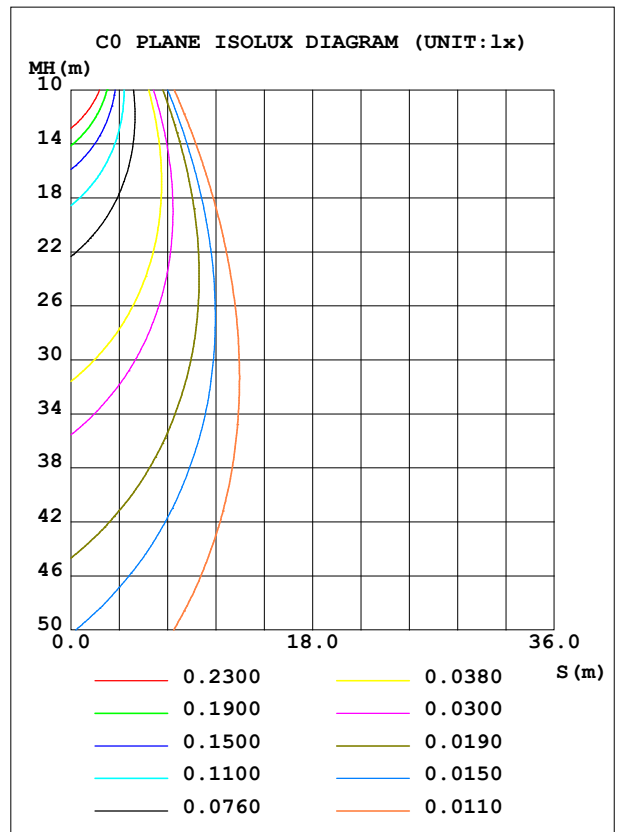
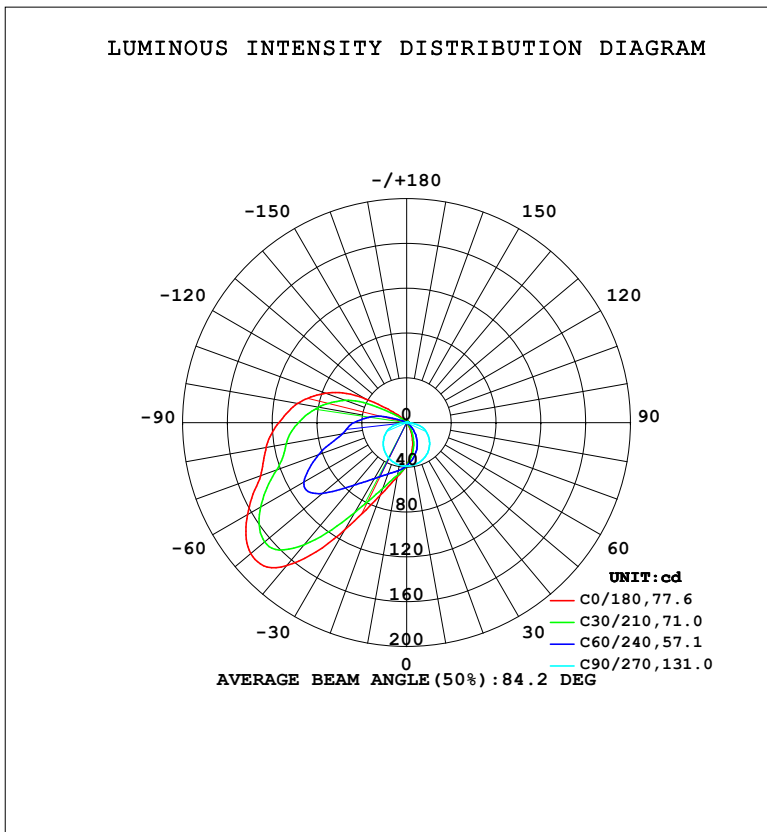


LUMINAIRE PHOTOMETRIC TEST REPORT

NAME: LED Strip	TYPE: Indoor lighting	WEIGHT: 20g
SPEC.: TA LED	DIM.: 1000*15*6MM	SERIAL No.: 20230901026
MFR.: EVERFINE	SUR.: 1000*6MM	Shielding Angle:

DATA OF LAMP		PHOTOMETRIC DATA			
MOBEA-24 (WCP) -UR-0615-TS2-TG		Imax (cd)	182.3	S/MH (C0/180)	3.24
NOMINAL POWER (W)	5.37626	LOR (%)	100.0	S/MH (C90/270)	1.33
RATED VOLTAGE (V)	DC 24V	TOTAL FLUX (lm)	390.50	<input type="checkbox"/> UP, DN (C0-180)	8.2, 35.6
NOMINAL FLUX (lm)	390.498	CIE CLASS	SEMI-D.	<input type="checkbox"/> UP, DN (C180-360)	11.5, 44.8
LAMPS INSIDE	1	<input type="checkbox"/> up (%)	19.7	CIBSE SHR NOM	0.00
TEST VOLTAGE (V)	DC 24V	<input type="checkbox"/> down (%)	80.3	CIBSE SHR MAX	0.15



C Range: 0 - 360DEG
 C Interval: 15.0DEG
 Test Speed: HIGH
 Temperature: 25.3°C
 Operators: DAMIN
 Test Date: 2023-09-06

Range: 0 - 180DEG
 Interval: 1.0DEG
 Test System: EVERFINE GO-2000B_V1 SYSTEM V2.00.471
 Humidity: 65.0%
 Test Distance: 4.880m [K=1.0000]
 Remarks:

ZONAL FLUX DIAGRAM

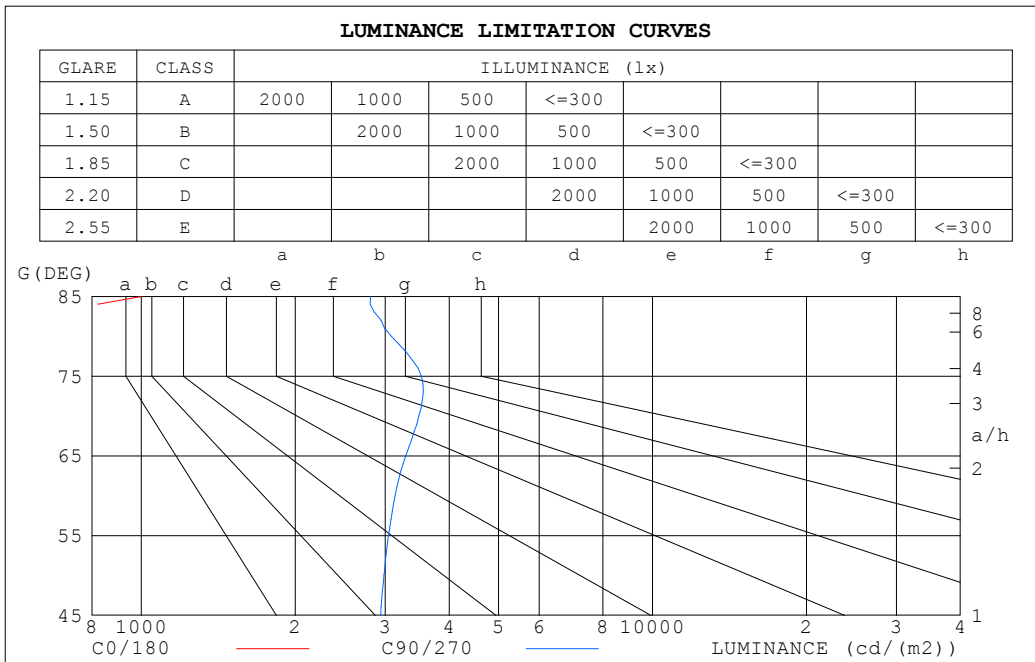
ZONAL FLUX DIAGRAM:

☐	C0	C45	C90	C135	C180	C225	C270	C315	☐	☐ zone	☐ total	%lum,lamp
10	27.01	30.62	38.40	46.64	49.25	45.69	38.52	31.44	0- 10	3.689	3.689	0.94,0.94
20	15.54	21.97	36.90	57.27	68.92	55.83	37.11	22.84	10- 20	11.05	14.74	3.77,3.77
30	5.927	12.93	34.44	77.26	110.5	74.94	34.79	13.71	20- 30	19.64	34.37	8.8,8.8
40	1.636	5.258	31.08	113.7	166.5	110.1	31.52	5.739	30- 40	32.79	67.16	17.2,17.2
50	0.7149	1.589	26.84	142.8	181.8	142.2	27.37	1.636	40- 50	48.45	115.6	29.6,29.6
60	0.6934	0.7117	21.95	131.6	164.1	133.0	22.57	0.6461	50- 60	56.59	172.2	44.1,44.1
70	0.8735	0.7133	16.71	104.6	138.8	106.6	17.13	0.6285	60- 70	54.28	226.5	58,58
80	1.094	0.8898	7.490	85.38	127.4	86.41	7.719	0.8050	70- 80	46.67	273.2	70,70
90	1.296	1.074	1.168	73.37	114.3	75.32	0.9375	0.9888	80- 90	40.49	313.6	80.3,80.3
100	1.468	1.206	0.4117	55.29	98.94	57.53	0.4057	1.105	90-100	33.18	346.8	88.8,88.8
110	1.562	1.270	0.4386	35.11	76.98	36.15	0.4437	1.175	100-110	23.92	370.8	94.9,94.9
120	1.555	1.211	0.4987	7.026	43.40	8.159	0.5086	1.189	110-120	13.33	384.1	98.4,98.4
130	1.451	1.148	0.5538	1.637	12.35	1.137	0.5625	1.154	120-130	4.208	388.3	99.4,99.4
140	1.298	1.111	0.5967	0.3771	2.145	0.3287	0.5992	1.110	130-140	1.152	389.4	99.7,99.7
150	1.185	1.086	0.6127	0.3052	0.3989	0.2831	0.6152	1.072	140-150	0.4920	389.9	99.9,99.9
160	1.098	0.9716	0.6188	0.3751	0.3285	0.3627	0.6201	0.9682	150-160	0.3135	390.3	99.9,99.9
170	0.9095	0.8086	0.6188	0.4793	0.4573	0.4741	0.6225	0.8040	160-170	0.1860	390.4	100,100
180	0.6679	0.6384	0.6201	0.6188	0.6605	0.6274	0.6225	0.6311	170-180	0.0609	390.5	100,100
DEG	LUMINOUS INTENSITY:cd									UNIT:lm		

C Range: 0 - 360DEG
 C Interval: 15.0DEG
 Test Speed: HIGH
 Temperature:25.3°C
 Operators:DAMIN
 Test Date:2023-09-06

☐ Range: 0 - 180DEG
 ☐ Interval: 1.0DEG
 Test System:EVERFINE GO-2000B_V1 SYSTEM V2.00.471
 Humidity:65.0%
 Test Distance:4.880m [K=1.0000]
 Remarks:

LUMINANCE LIMITATION CURVES



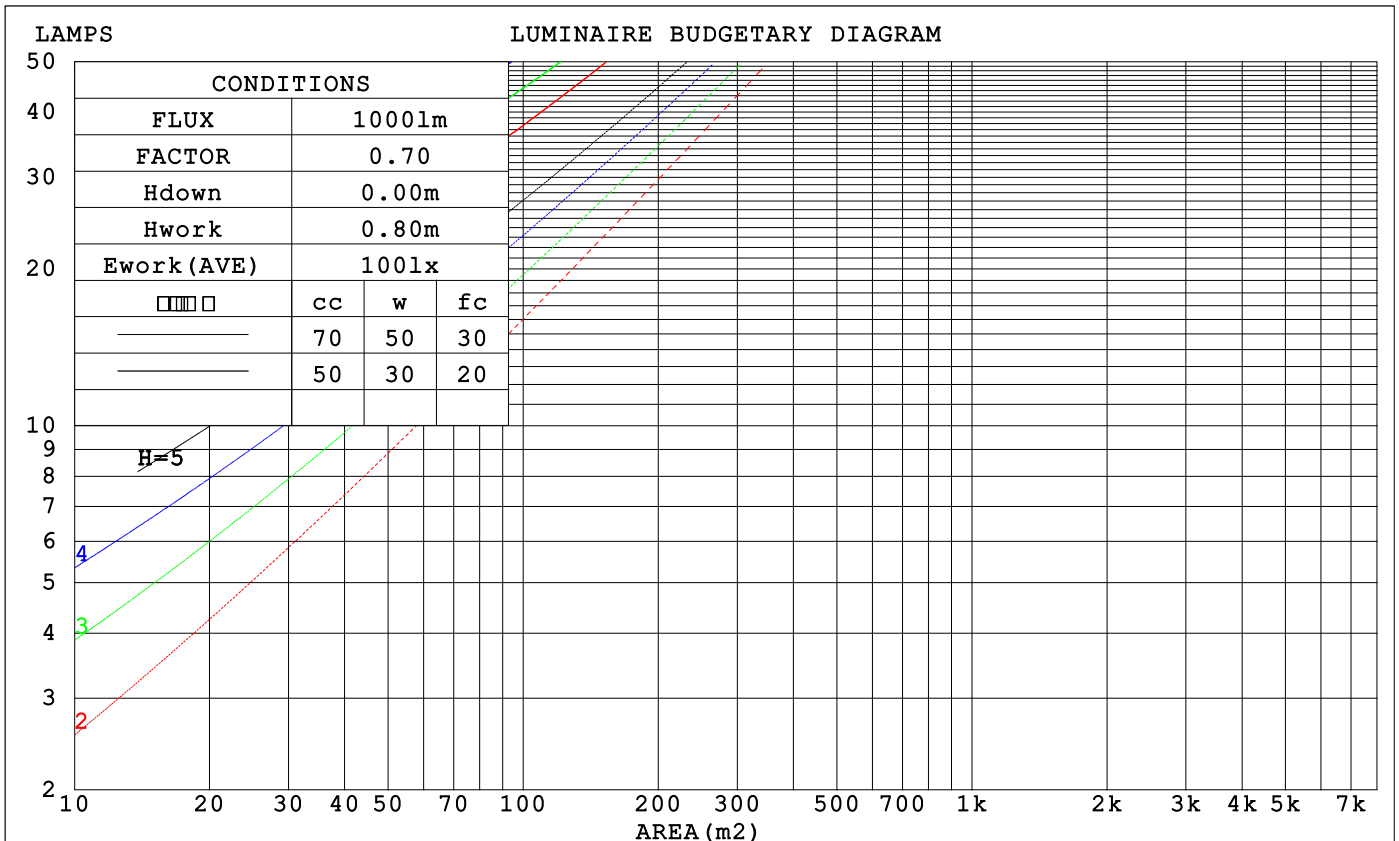
LUMINANCE cd/(m2)		
G (DEG)	C0/180	C90/270
85	999	2809
80	450	3081
75	268	3532
70	182	3489
65	132	3291
60	99	3135
55	81	3044
50	79	2983
45	101	2938

C Range: 0 - 360DEG
 C Interval: 15.0DEG
 Test Speed: HIGH
 Temperature: 25.3°C
 Operators: DAMIN
 Test Date: 2023-09-06

Range: 0 - 180DEG
 Interval: 1.0DEG
 Test System: EVERFINE GO-2000B_V1 SYSTEM V2.00.471
 Humidity: 65.0%
 Test Distance: 4.880m [K=1.0000]
 Remarks:

CU AND LUMINAIRE BUDGETARY ESTIMATE DIAGRAM

□cc	80%			70%			50%			30%			10%			0
□w	50%	30%	10%	50%	30%	10%	50%	30%	10%	50%	30%	10%	50%	30%	10%	0
□fc	20%			20%			20%			20%			20%			0
RCR	RCR:Room Cavity Ratio			Coefficients of Utilization(CU)												
0.0	1.14	1.14	1.14	1.09	1.09	1.09	1.00	1.00	1.00	.92	.92	.92	.84	.84	.84	.80
1.0	.92	.86	.81	.88	.82	.77	.80	.75	.71	.73	.69	.66	.66	.63	.60	.56
2.0	.77	.68	.61	.74	.66	.59	.67	.60	.54	.60	.55	.50	.54	.50	.46	.42
3.0	.66	.56	.48	.63	.53	.46	.57	.49	.43	.51	.45	.39	.46	.41	.36	.33
4.0	.57	.46	.39	.54	.45	.37	.49	.41	.35	.44	.37	.32	.40	.34	.29	.26
5.0	.50	.39	.32	.47	.38	.31	.43	.35	.28	.39	.32	.26	.35	.29	.24	.21
6.0	.44	.34	.27	.42	.33	.26	.38	.30	.24	.34	.27	.22	.31	.25	.20	.18
7.0	.39	.30	.23	.37	.28	.22	.34	.26	.20	.31	.24	.19	.28	.22	.17	.15
8.0	.35	.26	.20	.34	.25	.19	.31	.23	.18	.28	.21	.16	.25	.19	.15	.13
9.0	.32	.23	.17	.31	.22	.17	.28	.21	.15	.25	.19	.14	.23	.17	.13	.11
10.0	.29	.21	.15	.28	.20	.15	.26	.19	.14	.23	.17	.13	.21	.16	.12	.10



C Range: 0 - 360DEG
 C Interval: 15.0DEG
 Test Speed: HIGH
 Temperature:25.3°C
 Operators:DAMIN
 Test Date:2023-09-06

□ Range: 0 - 180DEG
 □ Interval: 1.0DEG
 Test System:EVERFINE GO-2000B_V1 SYSTEM V2.00.471
 Humidity:65.0%
 Test Distance:4.880m [K=1.0000]
 Remarks:

WEC AND CCEC

□cc	80%			70%			50%			30%			10%			0
□w	50%	30%	10%	50%	30%	10%	50%	30%	10%	50%	30%	10%	50%	30%	10%	0
□fc	20%			20%			20%			20%			20%			0
RCR	RCR:Room Cavity Ratio						Wall Exitance Coefficients (WEC)									
0.0	.442	.251	.080	.428	.244	.078	.403	.231	.074	.380	.219	.070	.359	.208	.067	
1.0	.373	.205	.063	.361	.199	.061	.338	.188	.058	.317	.178	.056	.298	.169	.053	
2.0	.327	.174	.052	.316	.169	.051	.295	.160	.049	.276	.151	.046	.258	.143	.044	
3.0	.291	.151	.044	.281	.147	.043	.262	.139	.042	.245	.131	.040	.229	.124	.038	
4.0	.262	.134	.039	.253	.130	.038	.236	.123	.036	.220	.116	.035	.205	.110	.033	
5.0	.238	.120	.034	.230	.116	.033	.215	.110	.032	.200	.104	.031	.186	.098	.029	
6.0	.219	.108	.031	.211	.105	.030	.197	.099	.029	.183	.094	.027	.171	.089	.026	
7.0	.202	.098	.028	.195	.096	.027	.182	.091	.026	.169	.086	.025	.158	.081	.024	
8.0	.187	.090	.025	.181	.088	.025	.169	.083	.024	.157	.079	.023	.147	.074	.022	
9.0	.174	.084	.023	.168	.081	.023	.157	.077	.022	.147	.073	.021	.137	.069	.020	

□cc	80%			70%			50%			30%			10%			0
□w	50%	30%	10%	50%	30%	10%	50%	30%	10%	50%	30%	10%	50%	30%	10%	0
□fc	20%			20%			20%			20%			20%			0
RCR	RCR:Room Cavity Ratio						Ceiling Cavity Exitance Coefficients (CCEC)									
0.0	.340	.340	.340	.291	.291	.291	.199	.199	.199	.114	.114	.114	.036	.036	.036	
1.0	.341	.306	.275	.291	.263	.237	.199	.181	.164	.115	.105	.095	.037	.034	.031	
2.0	.335	.284	.240	.287	.244	.208	.197	.169	.145	.113	.098	.085	.036	.032	.028	
3.0	.328	.268	.219	.282	.231	.190	.193	.160	.133	.112	.094	.079	.036	.030	.026	
4.0	.321	.256	.206	.275	.221	.179	.189	.154	.126	.110	.090	.074	.035	.029	.024	
5.0	.313	.246	.197	.269	.213	.171	.185	.149	.121	.107	.087	.072	.035	.028	.024	
6.0	.305	.238	.190	.262	.206	.166	.181	.144	.117	.105	.085	.070	.034	.028	.023	
7.0	.298	.232	.186	.256	.201	.162	.177	.141	.115	.103	.083	.068	.033	.027	.023	
8.0	.291	.226	.182	.250	.196	.159	.173	.138	.113	.101	.081	.067	.033	.027	.022	
9.0	.284	.222	.179	.245	.192	.156	.170	.135	.111	.099	.080	.066	.032	.026	.022	
10.0	.278	.217	.177	.240	.189	.155	.166	.133	.110	.097	.079	.066	.031	.026	.022	

C Range: 0 - 360DEG
 C Interval: 15.0DEG
 Test Speed: HIGH
 Temperature:25.3°C
 Operators:DAMIN
 Test Date:2023-09-06

□ Range: 0 - 180DEG
 □ Interval: 1.0DEG
 Test System:EVERFINE GO-2000B_V1 SYSTEM V2.00.471
 Humidity:65.0%
 Test Distance:4.880m [K=1.0000]
 Remarks:

UGR(Unified Glare Rating) Table

ceiling/cavity		0.7	0.7	0.5	0.5	0.3	0.7	0.7	0.5	0.5	0.3	
walls		0.5	0.3	0.5	0.3	0.3	0.5	0.3	0.5	0.3	0.3	
working plane		0.2	0.2	0.2	0.2	0.2	0.2	0.2	0.2	0.2	0.2	
Room dimensions		Viewed crosswise					Viewed endwise					
x = 2H y = 2H		-5.2	-3.8	-4.7	-3.2	-2.6	11.0	12.5	11.5	13.0	13.7	
	3H	-3.1	-1.7	-2.5	-1.1	-0.5	13.3	14.7	13.9	15.2	15.9	
	4H	-1.2	0.1	-0.6	0.7	1.4	14.5	15.8	15.1	16.4	17.1	
	6H	1.2	2.4	1.8	3.1	3.8	15.5	16.8	16.1	17.4	18.1	
	8H	2.7	3.9	3.3	4.5	5.2	15.9	17.1	16.5	17.7	18.4	
	12H	4.3	5.5	5.0	6.1	6.8	16.2	17.4	16.8	18.0	18.7	
	4H	2H	-4.2	-2.9	-3.6	-2.3	-1.6	10.6	11.9	11.2	12.5	13.1
		3H	-1.9	-0.8	-1.3	-0.1	0.6	12.8	14.0	13.5	14.6	15.4
		4H	0.1	1.1	0.7	1.8	2.6	14.1	15.1	14.7	15.8	16.5
		6H	2.7	3.6	3.4	4.3	5.1	15.1	16.1	15.8	16.8	17.6
		8H	4.3	5.2	4.9	5.8	6.6	15.6	16.5	16.3	17.2	18.0
		12H	6.1	6.9	6.7	7.6	8.4	16.0	16.8	16.7	17.5	18.3
	8H	4H	0.7	1.6	1.4	2.3	3.1	13.9	14.8	14.6	15.5	16.3
		6H	3.6	4.4	4.4	5.1	6.0	15.0	15.7	15.7	16.4	17.3
		8H	5.4	6.1	6.2	6.9	7.7	15.4	16.1	16.1	16.8	17.7
		12H	7.5	8.1	8.2	8.8	9.7	15.9	16.5	16.6	17.2	18.1
	12H	4H	0.9	1.7	1.6	2.4	3.2	13.8	14.6	14.5	15.3	16.2
		6H	3.9	4.6	4.6	5.3	6.2	14.9	15.6	15.6	16.3	17.2
		8H	5.8	6.4	6.6	7.2	8.1	15.4	16.0	16.1	16.7	17.6
Variations with the observer position at spacings(CIE Pub.117):												
S = 1.0H		+ 0.2 / - 0.2					+ 1.4 / - 1.4					
1.5H		+ 0.2 / - 0.2					+ 2.7 / - 3.4					
2.0H		+ 0.3 / - 0.4					+ 3.6 / - 5.2					

CIE Pub.117, 390.5 lm Total Lamp Luminous Flux Correct (8log(F/F0) = -3.3)
 Area: 0.014 m2

C Range: 0 - 360DEG
 C Interval: 15.0DEG
 Test Speed: HIGH
 Temperature:25.3°C
 Operators:DAMIN
 Test Date:2023-09-06

Range: 0 - 180DEG
 Interval: 1.0DEG
 Test System:EVERFINE GO-2000B_V1 SYSTEM V2.00.471
 Humidity:65.0%
 Test Distance:4.880m [K=1.0000]
 Remarks:

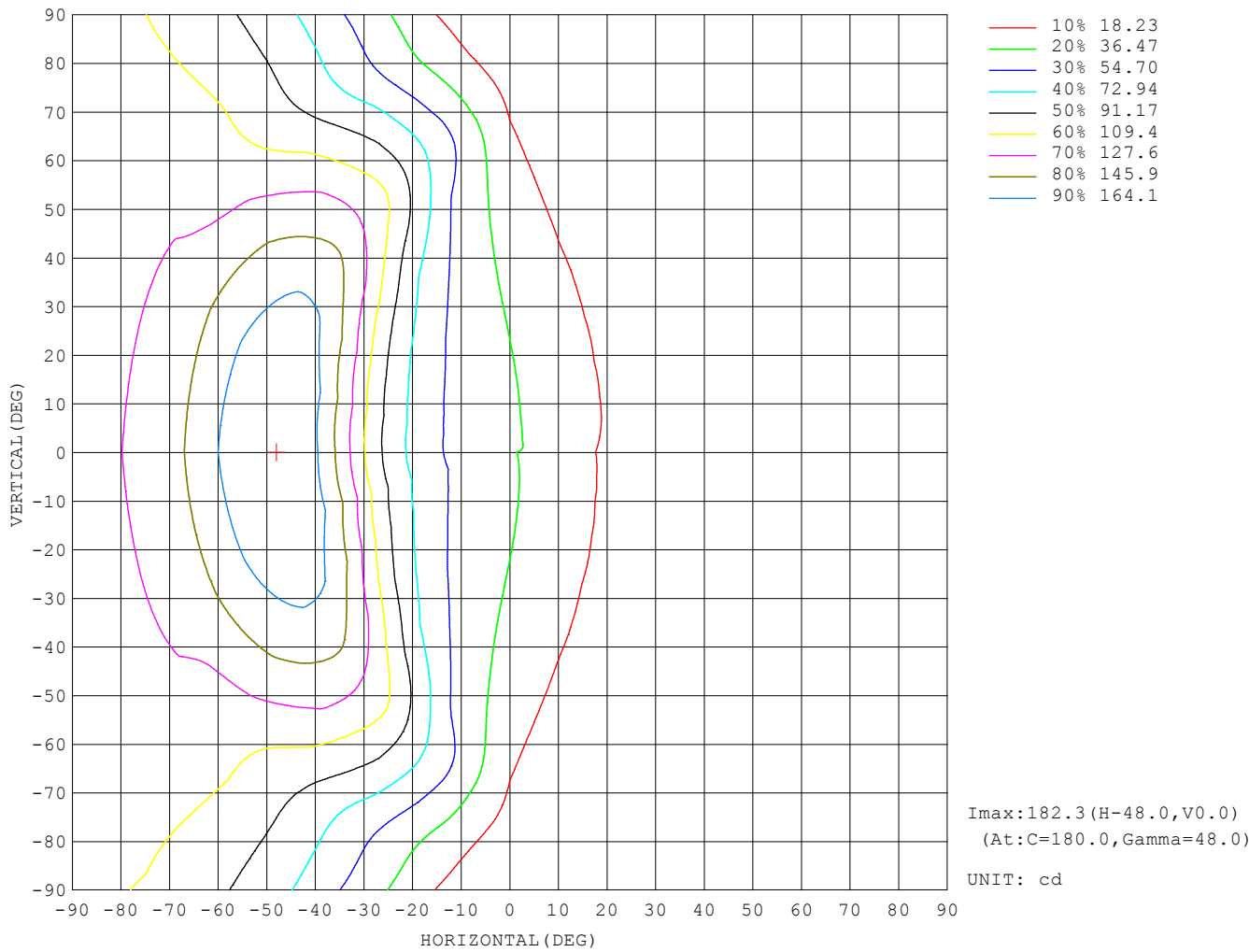
UTILIZATION FACTORS TABLE

REFLECTANCE										
Ceiling	0.8	0.8	0.8	0.7	0.7	0.7	0.5	0.5	0.5	0
Walls	0.7	0.5	0.3	0.7	0.5	0.3	0.7	0.5	0.3	0
Working plane	0.2	0.2	0.2	0.2	0.2	0.2	0.2	0.2	0.2	0
ROOM INDEX	UTILIZATION FACTORS (PERCENT) $k(RI) \times RCR = 5$									
$k = 0.60$	41	27	19	40	27	19	38	26	19	11
0.80	50	35	26	48	35	26	46	33	25	17
1.00	58	43	34	56	42	33	52	43	32	23
1.25	65	51	41	63	50	40	58	47	39	29
1.50	71	57	47	68	55	46	63	52	44	33
2.00	79	66	56	76	64	55	70	60	52	40
2.50	84	72	63	80	69	61	74	65	58	44
3.00	88	77	68	84	74	66	77	69	63	49
4.00	93	84	76	89	81	74	82	75	69	54
5.00	97	88	82	92	85	79	85	79	73	58
ROOM INDEX	UF (total)									Direct
According to DIN EN 13032-2 2004			Suspended				SHRNOM = 1.25			

C Range: 0 - 360DEG
 C Interval: 15.0DEG
 Test Speed: HIGH
 Temperature: 25.3°C
 Operators: DAMIN
 Test Date: 2023-09-06

Range: 0 - 180DEG
 Interval: 1.0DEG
 Test System: EVERFINE GO-2000B_V1 SYSTEM V2.00.471
 Humidity: 65.0%
 Test Distance: 4.880m [K=1.0000]
 Remarks:

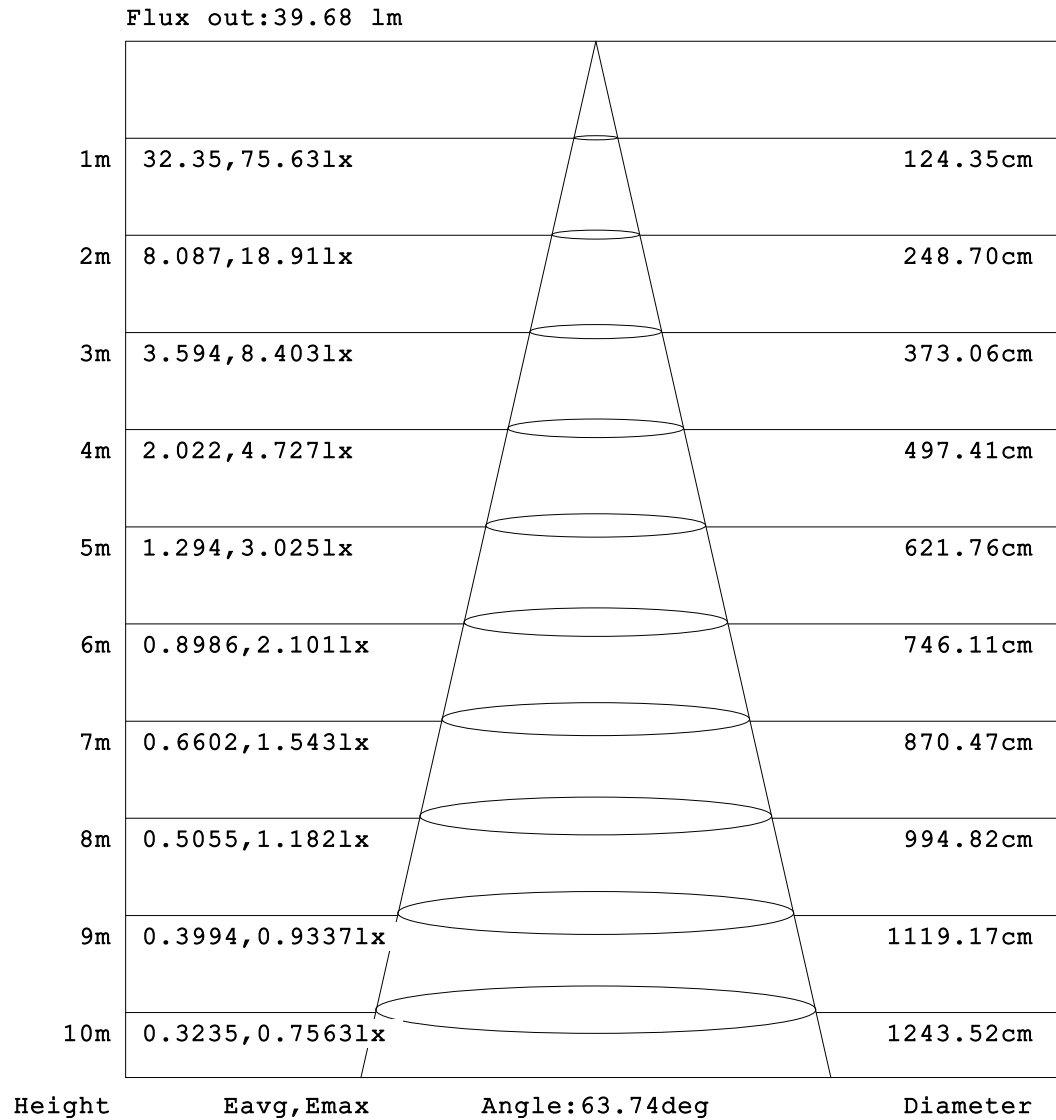
ISOCANDELA DIAGRAM



C Range: 0 - 360DEG
 C Interval: 15.0DEG
 Test Speed: HIGH
 Temperature: 25.3°C
 Operators: DAMIN
 Test Date: 2023-09-06

Range: 0 - 180DEG
 Interval: 1.0DEG
 Test System: EVERFINE GO-2000B_V1 SYSTEM V2.00.471
 Humidity: 65.0%
 Test Distance: 4.880m [K=1.0000]
 Remarks:

AAI Figure

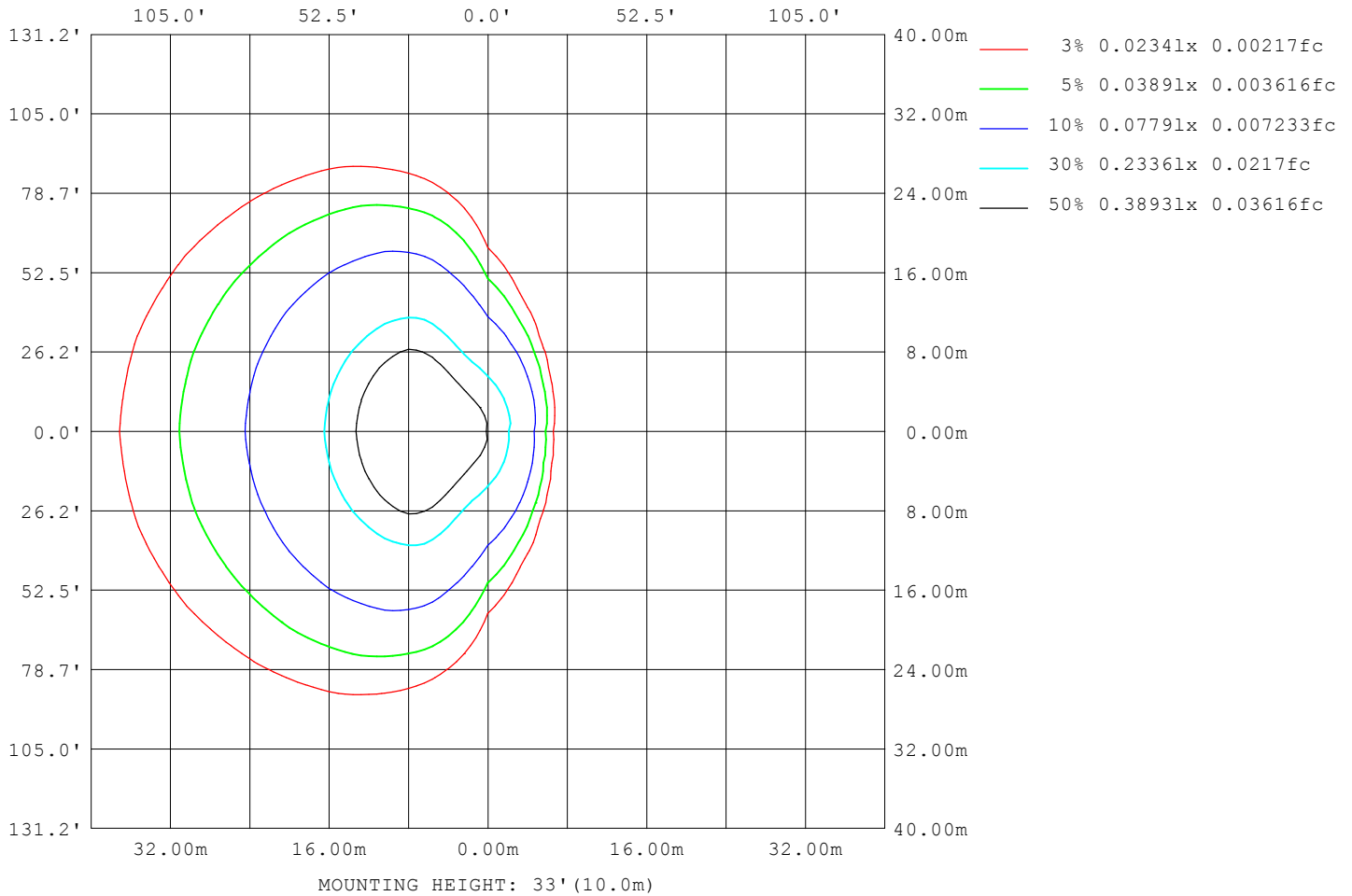


Note:The Curves indicate the illuminated area and the average illumination when the luminaire is at different distance.

C Range: 0 - 360DEG
 C Interval: 15.0DEG
 Test Speed: HIGH
 Temperature:25.3°C
 Operators:DAMIN
 Test Date:2023-09-06

Range: 0 - 180DEG
 Interval: 1.0DEG
 Test System:EVERFINE GO-2000B_V1 SYSTEM V2.00.471
 Humidity:65.0%
 Test Distance:4.880m [K=1.0000]
 Remarks:

ISOLUX DIAGRAM



C Range: 0 - 360DEG
 C Interval: 15.0DEG
 Test Speed: HIGH
 Temperature: 25.3°C
 Operators: DAMIN
 Test Date: 2023-09-06

Range: 0 - 180DEG
 Interval: 1.0DEG
 Test System: EVERFINE GO-2000B_V1 SYSTEM V2.00.471
 Humidity: 65.0%
 Test Distance: 4.880m [K=1.0000]
 Remarks:

LED Avg.L Report

NAME: LED Strip	TYPE: Indoor lighting	WEIGHT: 20g
SPEC.: TA LED	DIM.: 1000*15*6MM	SERIAL No.: 20230901026
MFR.: EVERFINE	SUR.: 1000*6MM	Shielding Angle:

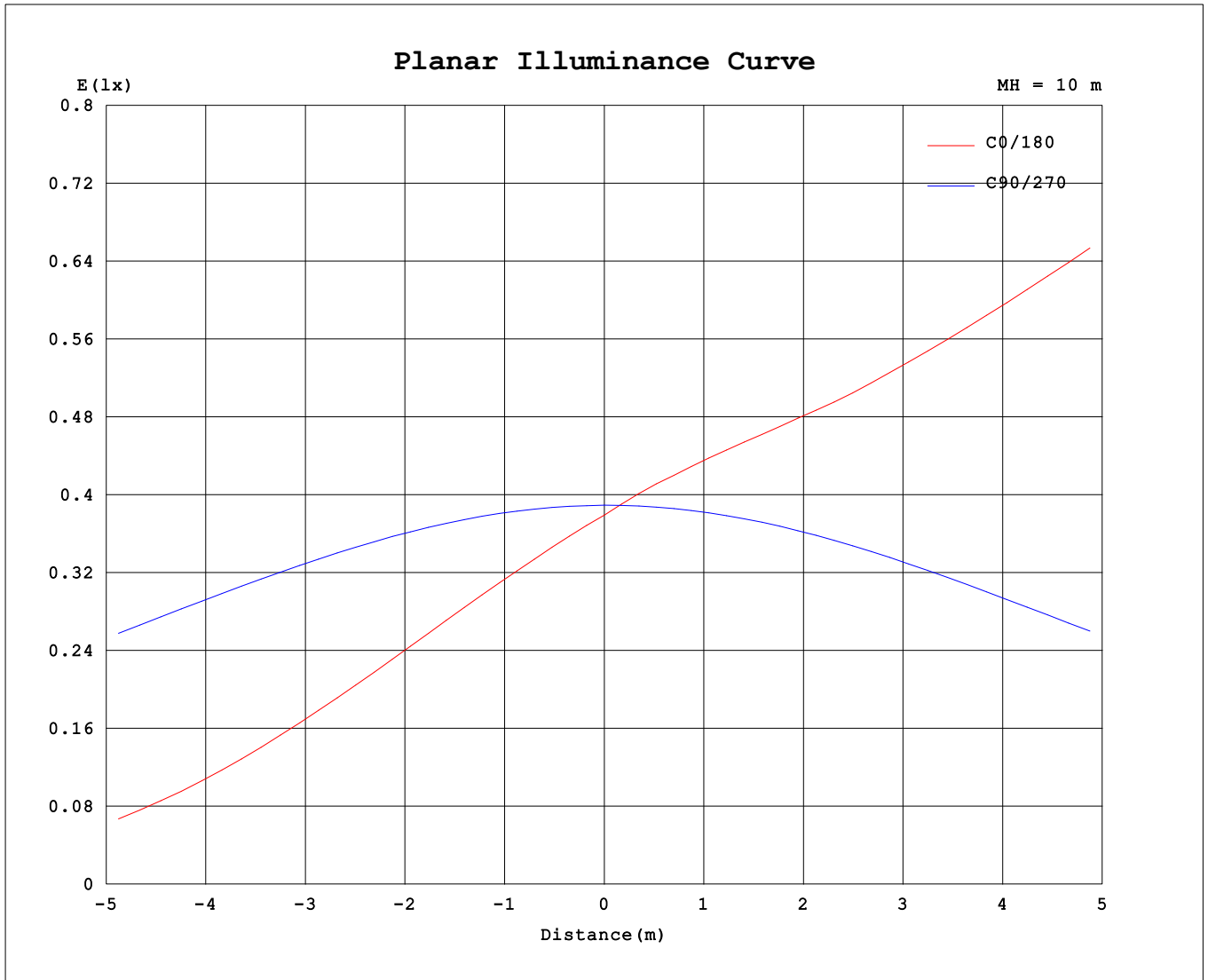
AvgL	cd/m2
L_0~180 (65) av	12854
L_0~180 (75) av	18408
L_0~180 (85) av	50294
L_90~270 (65) av	3335
L_90~270 (75) av	3574
L_90~270 (85) av	2818
L_45 (65) av	10172
L_45 (75) av	12883
L_45 (85) av	33648

Standard: GB/T 29293-2012

C Range: 0 - 360DEG
 C Interval: 15.0DEG
 Test Speed: HIGH
 Temperature:25.3℃
 Operators:DAMIN
 Test Date:2023-09-06

Range: 0 - 180DEG
 Interval: 1.0DEG
 Test System:EVERFINE GO-2000B_V1 SYSTEM V2.00.471
 Humidity:65.0%
 Test Distance:4.880m [K=1.0000]
 Remarks:

Planar Illuminance Curve



C Range: 0 - 360DEG
 C Interval: 15.0DEG
 Test Speed: HIGH
 Temperature: 25.3°C
 Operators: DAMIN
 Test Date: 2023-09-06

Range: 0 - 180DEG
 Interval: 1.0DEG
 Test System: EVERFINE GO-2000B_V1 SYSTEM V2.00.471
 Humidity: 65.0%
 Test Distance: 4.880m [K=1.0000]
 Remarks:

LUMINOUS DISTRIBUTION INTENSITY DATA

Table--1

UNIT: cd

C (DEG) \ □ (DEG)	0	15	30	45	60	75	90	105	120	135	150	165	180	195	210	225	240	255	270
0	37.9	38.2	38.1	38.4	38.5	38.8	38.9	39.0	39.2	39.2	39.3	39.3	37.9	38.2	38.1	38.4	38.5	38.8	38.9
5	32.6	33.1	33.5	34.6	35.8	37.3	38.8	40.2	41.7	42.9	43.9	44.4	43.4	43.3	42.8	42.0	41.2	40.1	38.8
10	27.0	27.7	28.7	30.6	32.8	35.6	38.4	41.2	44.0	46.6	48.8	50.2	49.2	48.8	47.6	45.7	43.6	41.1	38.5
15	21.3	22.2	23.7	26.4	29.7	33.6	37.8	42.0	46.4	51.0	55.3	58.2	57.1	56.3	53.7	50.0	46.1	42.0	37.9
20	15.5	16.6	18.5	22.0	26.2	31.4	36.9	42.7	49.3	57.3	65.1	70.4	68.9	67.4	62.6	55.8	48.9	42.7	37.1
25	10.2	11.3	13.4	17.4	22.6	29.0	35.8	43.3	53.3	65.9	78.8	87.2	85.8	83.6	75.0	63.9	52.7	43.4	36.1
30	5.93	6.76	8.79	12.9	18.8	26.3	34.4	44.0	58.7	77.3	97.4	112	110	107	92.5	74.9	57.8	44.2	34.8
35	3.11	3.65	5.10	8.74	14.9	23.4	32.9	45.1	65.5	92.7	124	142	141	136	117	90.0	64.2	45.2	33.3
40	1.64	1.91	2.73	5.26	11.0	20.3	31.1	46.7	74.4	114	148	166	167	162	142	110	72.9	46.8	31.5
45	1.00	1.13	1.51	2.90	7.44	17.0	29.1	48.8	86.5	133	164	178	181	176	161	130	84.8	48.9	29.5
50	0.71	0.77	0.99	1.59	4.48	13.5	26.8	51.6	100.0	143	165	177	182	178	166	142	98.4	51.9	27.4
55	0.65	0.66	0.71	1.01	2.42	10.0	24.4	55.1	108	140	159	170	175	171	161	142	108	55.9	25.0
60	0.69	0.69	0.66	0.71	1.30	6.73	21.9	59.4	105	132	148	158	164	160	151	133	106	60.2	22.6
65	0.78	0.78	0.71	0.66	0.85	3.94	19.5	59.5	94.1	119	134	144	151	147	138	121	95.6	60.3	20.0
70	0.87	0.87	0.80	0.71	0.68	2.16	16.7	51.4	82.0	105	120	132	139	134	124	107	83.6	52.2	17.1
75	0.97	0.97	0.89	0.79	0.71	1.27	12.8	41.7	67.8	91.8	112	127	132	128	114	93.4	69.5	41.9	13.1
80	1.09	1.08	1.00	0.89	0.75	0.85	7.49	31.1	57.5	85.4	108	122	127	123	109	86.4	58.4	31.7	7.72
85	1.22	1.21	1.12	1.00	0.82	0.72	3.43	23.6	51.9	80.2	102	115	122	117	104	82.1	52.9	24.0	3.45
90	1.30	1.28	1.20	1.07	0.89	0.73	1.17	17.6	45.6	73.4	94.5	108	114	110	96.7	75.3	47.2	18.1	0.94
95	1.39	1.37	1.28	1.14	0.97	0.81	0.42	12.1	37.7	64.5	86.3	101	107	102	88.9	67.0	39.4	12.5	0.39
100	1.47	1.45	1.34	1.21	1.03	0.78	0.41	5.10	29.9	55.3	77.2	92.1	98.9	93.9	80.0	57.5	31.5	5.22	0.41
105	1.53	1.50	1.40	1.25	1.07	0.64	0.41	1.64	20.3	46.3	67.3	81.5	88.8	83.7	69.7	48.2	21.6	1.03	0.42
110	1.56	1.52	1.42	1.27	1.06	0.68	0.44	0.94	8.42	35.1	56.6	70.4	77.0	72.0	58.5	36.1	8.67	0.47	0.44
115	1.56	1.52	1.43	1.26	0.96	0.71	0.47	0.62	2.88	19.3	42.6	57.4	63.2	58.0	42.7	18.7	2.99	0.32	0.48
120	1.56	1.50	1.42	1.21	0.96	0.74	0.50	0.52	1.45	7.03	23.2	38.6	43.4	37.0	22.7	8.16	0.92	0.31	0.51
125	1.51	1.46	1.38	1.17	0.96	0.76	0.53	0.46	0.73	3.26	8.66	18.2	23.3	18.9	11.2	3.07	0.45	0.33	0.54
130	1.45	1.41	1.33	1.15	0.97	0.78	0.55	0.45	0.44	1.64	4.03	6.92	12.3	9.80	5.03	1.14	0.29	0.36	0.56
135	1.38	1.35	1.28	1.13	0.97	0.79	0.58	0.45	0.37	0.76	2.03	3.42	5.67	3.87	1.76	0.56	0.28	0.38	0.58
140	1.30	1.29	1.23	1.11	0.97	0.79	0.60	0.46	0.35	0.38	0.90	1.61	2.15	1.58	0.82	0.33	0.30	0.41	0.60
145	1.23	1.24	1.20	1.10	0.97	0.79	0.60	0.47	0.35	0.30	0.40	0.66	0.93	0.68	0.39	0.28	0.32	0.43	0.61
150	1.19	1.20	1.18	1.09	0.96	0.78	0.61	0.48	0.36	0.31	0.29	0.32	0.40	0.34	0.28	0.28	0.36	0.46	0.62
155	1.15	1.16	1.13	1.04	0.93	0.77	0.62	0.50	0.39	0.34	0.28	0.28	0.30	0.29	0.30	0.32	0.39	0.48	0.62
160	1.10	1.09	1.06	0.97	0.88	0.74	0.62	0.52	0.42	0.38	0.33	0.32	0.33	0.31	0.34	0.36	0.43	0.50	0.62
165	1.02	1.00	0.97	0.89	0.82	0.71	0.62	0.54	0.46	0.42	0.38	0.37	0.38	0.37	0.40	0.42	0.47	0.53	0.62
170	0.91	0.89	0.86	0.81	0.76	0.68	0.62	0.57	0.50	0.48	0.44	0.44	0.46	0.44	0.46	0.47	0.52	0.56	0.62
175	0.79	0.76	0.75	0.72	0.70	0.65	0.62	0.60	0.56	0.55	0.52	0.52	0.55	0.53	0.55	0.55	0.58	0.59	0.62
180	0.67	0.65	0.65	0.64	0.64	0.63	0.62	0.62	0.62	0.62	0.62	0.63	0.66	0.64	0.64	0.63	0.63	0.62	0.62

C Range: 0 - 360DEG
 C Interval: 15.0DEG
 Test Speed: HIGH
 Temperature: 25.3°C
 Operators: DAMIN
 Test Date: 2023-09-06

□ Range: 0 - 180DEG
 □ Interval: 1.0DEG
 Test System: EVERFINE GO-2000B_V1 SYSTEM V2.00.471
 Humidity: 65.0%
 Test Distance: 4.880m [K=1.0000]
 Remarks:

LUMINOUS DISTRIBUTION INTENSITY DATA

Table--2

UNIT: cd

C (DEG) □ (DEG)	285	300	315	330	345														
0	39.0	39.2	39.2	39.3	39.3														
5	37.6	36.5	35.4	34.8	34.1														
10	35.9	33.6	31.4	30.0	28.8														
15	34.0	30.5	27.3	25.0	23.2														
20	31.8	27.1	22.8	19.8	17.6														
25	29.4	23.4	18.3	14.6	12.2														
30	26.7	19.6	13.7	9.80	7.40														
35	23.8	15.7	9.41	5.77	3.98														
40	20.7	11.8	5.74	3.06	1.99														
45	17.4	8.09	3.14	1.57	1.11														
50	13.9	4.95	1.64	0.94	0.76														
55	10.4	2.69	0.95	0.66	0.65														
60	7.02	1.38	0.65	0.63	0.68														
65	4.11	0.77	0.58	0.69	0.77														
70	2.01	0.53	0.63	0.78	0.86														
75	0.87	0.55	0.71	0.88	0.96														
80	0.50	0.61	0.80	0.98	1.09														
85	0.47	0.69	0.92	1.11	1.21														
90	0.50	0.76	0.99	1.18	1.28														
95	0.54	0.81	1.05	1.26	1.38														
100	0.59	0.86	1.11	1.33	1.45														
105	0.63	0.90	1.15	1.37	1.50														
110	0.66	0.93	1.18	1.39	1.52														
115	0.69	0.95	1.19	1.39	1.53														
120	0.72	0.96	1.19	1.38	1.52														
125	0.74	0.96	1.18	1.36	1.47														
130	0.76	0.96	1.15	1.31	1.42														
135	0.78	0.96	1.13	1.26	1.36														
140	0.78	0.96	1.11	1.21	1.29														
145	0.79	0.95	1.10	1.17	1.23														
150	0.79	0.93	1.07	1.14	1.19														
155	0.77	0.90	1.03	1.10	1.14														
160	0.75	0.85	0.97	1.03	1.08														
165	0.72	0.80	0.89	0.94	0.99														
170	0.69	0.74	0.80	0.84	0.88														
175	0.66	0.68	0.72	0.73	0.76														
180	0.63	0.63	0.63	0.63	0.64														

C Range: 0 - 360DEG
 C Interval: 15.0DEG
 Test Speed: HIGH
 Temperature:25.3°C
 Operators:DAMIN
 Test Date:2023-09-06

□ Range: 0 - 180DEG
 □ Interval: 1.0DEG
 Test System:EVERFINE GO-2000B_V1 SYSTEM V2.00.471
 Humidity:65.0%
 Test Distance:4.880m [K=1.0000]
 Remarks: