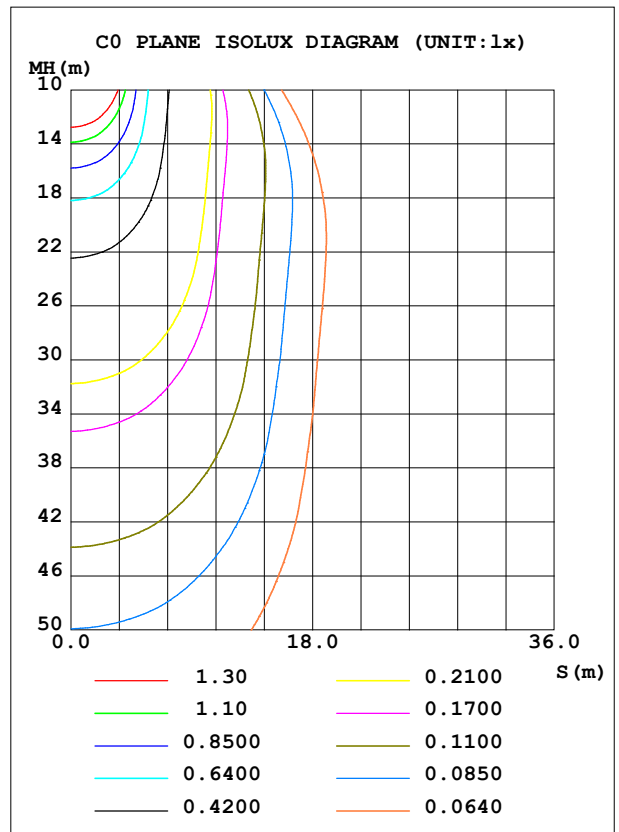
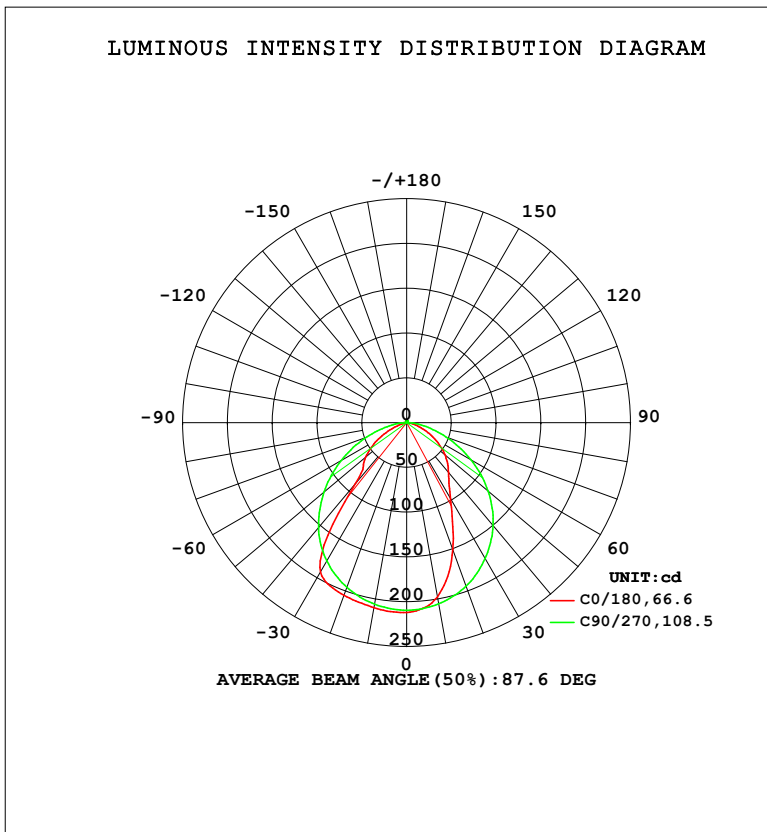


LUMINAIRE PHOTOMETRIC TEST REPORT

NAME: LED Strip	TYPE: Indoor lighting	WEIGHT: 20g
SPEC.: 2835 128LED	DIM.: 1000*8*1.2MM	SERIAL No.: 20230808010
MFR.: EVERFINE	SUR.: 1000*8MM	Shielding Angle:

DATA OF LAMP		PHOTOMETRIC DATA				Eff: 87.18 lm/W
MODEL	长方	I _{max} (cd)	212.0	S/MH (C0/180)	1.12	
NOMINAL POWER (W)	5.32612	LOR (%)	100.0	S/MH (C90/270)	1.26	
RATED VOLTAGE (V)	DC 24V	TOTAL FLUX (lm)	465.63	<input type="checkbox"/> UP, DN (C0-180)	0.7, 46.8	
NOMINAL FLUX (lm)	465.628	CIE CLASS	DIRECT	<input type="checkbox"/> UP, DN (C180-360)	0.7, 51.9	
LAMPS INSIDE	1	<input type="checkbox"/> up (%)	1.4	CIBSE SHR NOM	1.25	
TEST VOLTAGE (V)	DC 24V	<input type="checkbox"/> down (%)	98.6	CIBSE SHR MAX	1.25	



C Range: 0 - 360DEG
 C Interval: 90.0DEG
 Test Speed: HIGH
 Temperature: 25.3°C
 Operators: DAMIN
 Test Date: 2023-08-25

Range: 0 - 180DEG
 Interval: 1.0DEG
 Test System: EVERFINE GO-2000B_V1 SYSTEM V2.00.471
 Humidity: 65.0%
 Test Distance: 4.880m [K=1.0000]
 Remarks:

ZONAL FLUX DIAGRAM

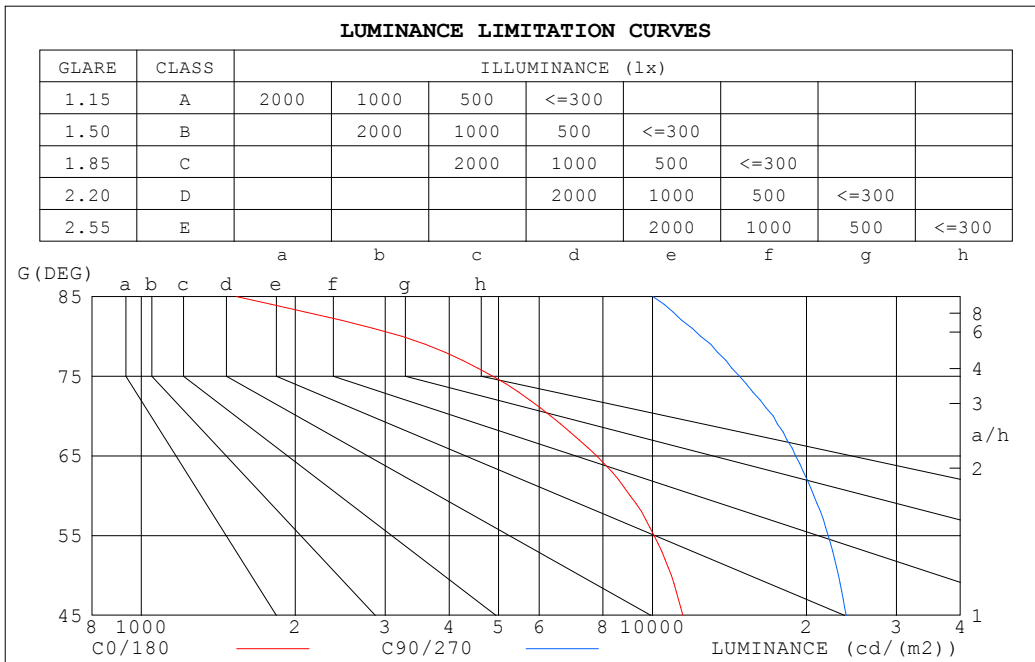
ZONAL FLUX DIAGRAM:

°	C0	C90	C180	C270					°	□ zone	□ total	%lum,lamp
10	197.7	205.4	209.9	205.8					0- 10	19.83	19.83	4.26,4.26
20	151.0	194.2	205.2	195.6					10- 20	55.40	75.23	16.2,16.2
30	98.33	175.2	192.8	178.4					20- 30	80.23	155.5	33.4,33.4
40	72.86	150.3	88.99	153.2					30- 40	87.65	243.1	52.2,52.2
50	55.95	118.8	59.77	120.6					40- 50	78.48	321.6	69.1,69.1
60	36.17	82.68	36.47	84.44					50- 60	66.62	388.2	83.4,83.4
70	17.29	47.10	11.57	47.81					60- 70	44.64	432.9	93,93
80	4.488	17.24	3.943	17.38					70- 80	20.84	453.7	97.4,97.4
90	0.3364	0.9637	2.162	0.8422					80- 90	5.477	459.2	98.6,98.6
100	0.3259	0.6030	0.3579	0.5954					90-100	0.6405	459.8	98.8,98.8
110	0.5058	0.8298	0.4474	0.8294					100-110	0.5851	460.4	98.9,98.9
120	0.7827	1.071	0.6436	1.070					110-120	0.7635	461.2	99,99
130	1.085	1.304	0.9010	1.305					120-130	0.9123	462.1	99.2,99.2
140	1.392	1.543	1.191	1.538					130-140	0.9894	463.1	99.4,99.4
150	1.642	1.776	1.498	1.763					140-150	0.9677	464.0	99.7,99.7
160	1.867	1.984	1.781	1.968					150-160	0.8234	464.9	99.8,99.8
170	2.109	2.146	2.034	2.130					160-170	0.5661	465.4	100,100
180	2.206	2.230	2.206	2.228					170-180	0.2056	465.6	100,100
DEG	LUMINOUS INTENSITY:cd									UNIT:lm		

C Range: 0 - 360DEG
 C Interval: 90.0DEG
 Test Speed: HIGH
 Temperature:25.3°C
 Operators:DAMIN
 Test Date:2023-08-25

□ Range: 0 - 180DEG
 □ Interval: 1.0DEG
 Test System:EVERFINE GO-2000B_V1 SYSTEM V2.00.471
 Humidity:65.0%
 Test Distance:4.880m [K=1.0000]
 Remarks:

LUMINANCE LIMITATION CURVES



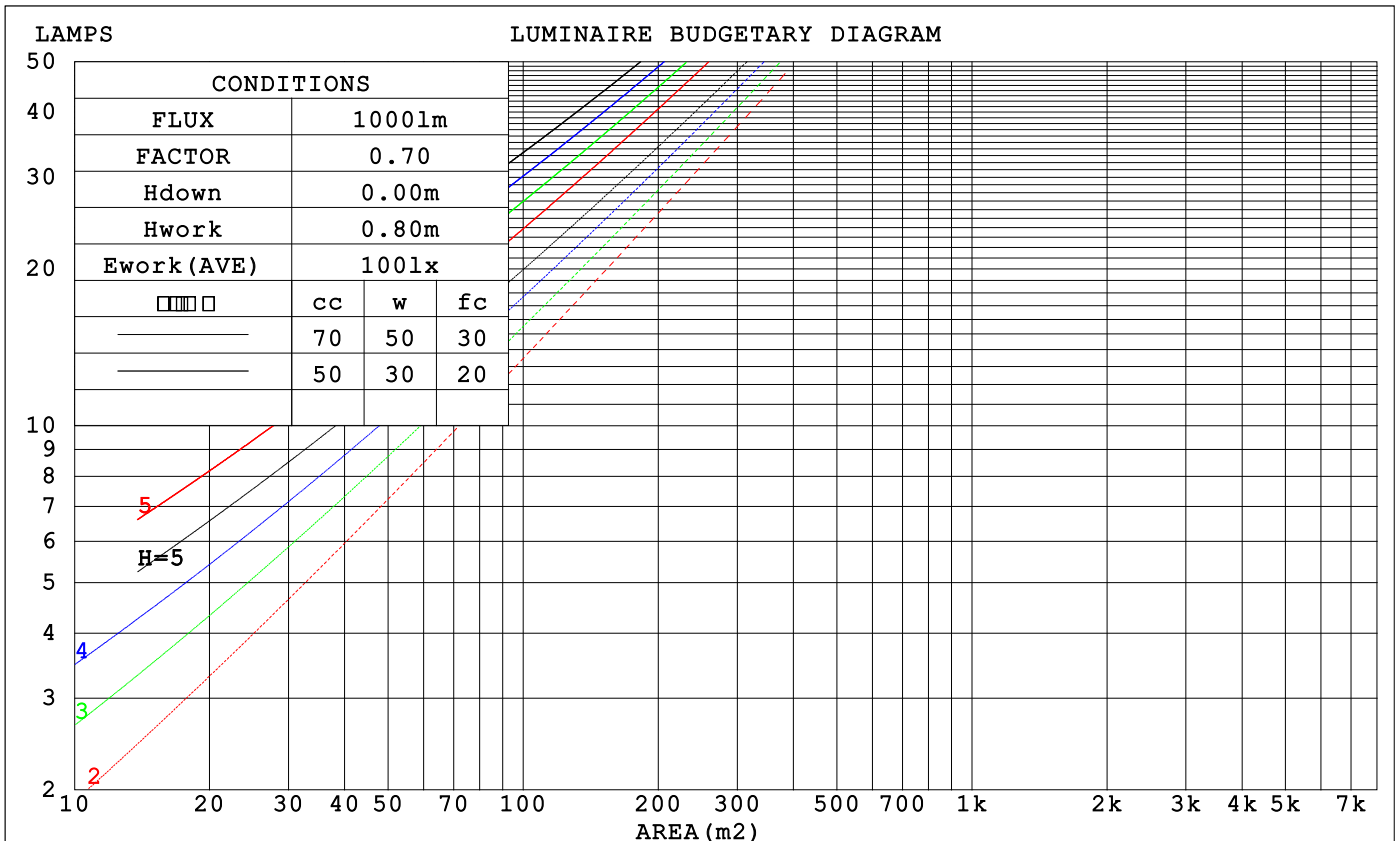
LUMINANCE cd/(m2)		
G (DEG)	C0/180	C90/270
85	1535	10019
80	3231	12407
75	4868	14802
70	6319	17215
65	7778	19050
60	9042	20670
55	10065	22067
50	10881	23101
45	11461	23909

C Range: 0 - 360DEG
 C Interval: 90.0DEG
 Test Speed: HIGH
 Temperature: 25.3°C
 Operators: DAMIN
 Test Date: 2023-08-25

Range: 0 - 180DEG
 Interval: 1.0DEG
 Test System: EVERFINE GO-2000B_V1 SYSTEM V2.00.471
 Humidity: 65.0%
 Test Distance: 4.880m [K=1.0000]
 Remarks:

CU AND LUMINAIRE BUDGETARY ESTIMATE DIAGRAM

□cc	80%			70%			50%			30%			10%			0
□w	50%	30%	10%	50%	30%	10%	50%	30%	10%	50%	30%	10%	50%	30%	10%	0
□fc	20%			20%			20%			20%			20%			0
RCR	RCR:Room Cavity Ratio			Coefficients of Utilization(CU)												
0.0	1.19	1.19	1.19	1.16	1.16	1.16	1.10	1.10	1.10	1.05	1.05	1.05	1.01	1.01	1.01	.99
1.0	1.05	1.01	.98	1.03	.99	.96	.98	.96	.93	.94	.92	.90	.91	.89	.87	.85
2.0	.93	.87	.81	.91	.85	.80	.87	.82	.78	.84	.80	.76	.81	.77	.74	.72
3.0	.83	.75	.69	.81	.74	.68	.78	.72	.67	.75	.70	.66	.72	.68	.64	.62
4.0	.74	.66	.59	.72	.65	.59	.70	.63	.58	.67	.62	.57	.65	.60	.56	.54
5.0	.66	.58	.52	.65	.57	.51	.63	.56	.51	.61	.55	.50	.59	.54	.50	.47
6.0	.60	.52	.46	.59	.51	.46	.57	.50	.45	.56	.49	.45	.54	.48	.44	.42
7.0	.55	.47	.41	.54	.46	.41	.52	.45	.40	.51	.45	.40	.50	.44	.40	.38
8.0	.50	.42	.37	.50	.42	.37	.48	.41	.36	.47	.41	.36	.46	.40	.36	.34
9.0	.46	.39	.33	.46	.38	.33	.45	.38	.33	.43	.37	.33	.42	.37	.33	.31
10.0	.43	.35	.30	.42	.35	.30	.41	.35	.30	.40	.34	.30	.39	.34	.30	.28



C Range: 0 - 360DEG
 C Interval: 90.0DEG
 Test Speed: HIGH
 Temperature:25.3°C
 Operators:DAMIN
 Test Date:2023-08-25

□ Range: 0 - 180DEG
 □ Interval: 1.0DEG
 Test System:EVERFINE GO-2000B_V1 SYSTEM V2.00.471
 Humidity:65.0%
 Test Distance:4.880m [K=1.0000]
 Remarks:

WEC AND CCEC

□cc	80%			70%			50%			30%			10%			0
□w	50%	30%	10%	50%	30%	10%	50%	30%	10%	50%	30%	10%	50%	30%	10%	0
□fc	20%			20%			20%			20%			20%			0
RCR	RCR:Room Cavity Ratio						Wall Exitance Coefficients (WEC)									
0.0	.278	.158	.050	.270	.154	.049	.256	.147	.047	.243	.140	.045	.232	.134	.043	
1.0	.265	.145	.044	.258	.142	.044	.246	.137	.042	.235	.132	.041	.224	.127	.040	
2.0	.247	.132	.039	.242	.129	.039	.231	.125	.038	.221	.121	.037	.212	.117	.036	
3.0	.230	.120	.035	.225	.118	.035	.216	.114	.034	.207	.111	.034	.199	.108	.033	
4.0	.215	.109	.032	.210	.108	.031	.202	.105	.031	.194	.102	.030	.186	.100	.030	
5.0	.200	.100	.029	.196	.099	.029	.189	.097	.028	.182	.094	.028	.175	.092	.027	
6.0	.187	.093	.026	.184	.092	.026	.177	.090	.026	.171	.088	.025	.165	.086	.025	
7.0	.176	.086	.024	.173	.085	.024	.167	.083	.024	.161	.081	.023	.155	.080	.023	
8.0	.165	.080	.022	.163	.079	.022	.157	.078	.022	.152	.076	.022	.147	.075	.022	
9.0	.156	.075	.021	.154	.074	.021	.149	.073	.020	.144	.071	.020	.139	.070	.020	
10.0	.156	.075	.021	.154	.074	.021	.149	.073	.020	.144	.071	.020	.139	.070	.020	

□cc	80%			70%			50%			30%			10%			0
□w	50%	30%	10%	50%	30%	10%	50%	30%	10%	50%	30%	10%	50%	30%	10%	0
□fc	20%			20%			20%			20%			20%			0
RCR	RCR:Room Cavity Ratio						Ceiling Cavity Exitance Coefficients (CCEC)									
0.0	.201	.201	.201	.172	.172	.172	.117	.117	.117	.067	.067	.067	.022	.022	.022	
1.0	.189	.167	.148	.161	.143	.127	.110	.099	.088	.064	.057	.051	.020	.018	.017	
2.0	.179	.143	.112	.154	.123	.097	.105	.085	.068	.061	.049	.040	.019	.016	.013	
3.0	.171	.125	.088	.147	.108	.077	.101	.075	.054	.058	.044	.032	.019	.014	.010	
4.0	.163	.111	.072	.140	.096	.062	.096	.067	.044	.056	.039	.026	.018	.013	.009	
5.0	.156	.101	.060	.134	.087	.053	.092	.061	.037	.053	.036	.022	.017	.012	.007	
6.0	.149	.092	.052	.128	.080	.045	.088	.056	.032	.051	.033	.019	.016	.011	.006	
7.0	.142	.085	.046	.122	.074	.040	.084	.052	.028	.049	.031	.017	.016	.010	.006	
8.0	.136	.080	.041	.117	.069	.036	.081	.048	.025	.047	.029	.015	.015	.009	.005	
9.0	.130	.075	.037	.112	.065	.032	.078	.046	.023	.045	.027	.014	.015	.009	.005	
10.0	.125	.070	.034	.107	.061	.030	.075	.043	.021	.043	.025	.013	.014	.008	.004	

C Range: 0 - 360DEG
 C Interval: 90.0DEG
 Test Speed: HIGH
 Temperature:25.3°C
 Operators:DAMIN
 Test Date:2023-08-25

□ Range: 0 - 180DEG
 □ Interval: 1.0DEG
 Test System:EVERFINE GO-2000B_V1 SYSTEM V2.00.471
 Humidity:65.0%
 Test Distance:4.880m [K=1.0000]
 Remarks:

UGR(Unified Glare Rating) Table

ceiling/cavity	0.7	0.7	0.5	0.5	0.3	0.7	0.7	0.5	0.5	0.3
walls	0.5	0.3	0.5	0.3	0.3	0.5	0.3	0.5	0.3	0.3
working plane	0.2	0.2	0.2	0.2	0.2	0.2	0.2	0.2	0.2	0.2
Room dimensions	Viewed crosswise					Viewed endwise				
x = 2H y = 2H	23.0	24.4	23.3	24.6	24.8	26.0	27.4	26.3	27.6	27.9
3H	23.8	25.1	24.1	25.3	25.6	27.4	28.7	27.7	28.9	29.2
4H	24.0	25.2	24.3	25.5	25.8	27.9	29.1	28.2	29.4	29.6
6H	24.1	25.2	24.4	25.5	25.8	28.2	29.3	28.5	29.6	29.9
8H	24.0	25.1	24.4	25.4	25.8	28.3	29.4	28.6	29.7	30.0
12H	24.0	25.1	24.4	25.4	25.7	28.3	29.4	28.7	29.7	30.0
4H 2H	23.9	25.1	24.2	25.4	25.7	26.3	27.5	26.6	27.8	28.0
3H	24.9	25.9	25.3	26.3	26.6	27.8	28.9	28.2	29.2	29.5
4H	25.2	26.2	25.6	26.5	26.9	28.4	29.4	28.8	29.7	30.1
6H	25.3	26.2	25.7	26.5	26.9	28.8	29.7	29.3	30.1	30.5
8H	25.3	26.1	25.8	26.5	26.9	29.0	29.8	29.4	30.2	30.6
12H	25.3	26.0	25.7	26.4	26.9	29.1	29.8	29.5	30.2	30.6
8H 4H	25.5	26.3	26.0	26.7	27.1	28.4	29.2	28.9	29.6	30.0
6H	25.8	26.4	26.2	26.9	27.3	29.0	29.6	29.4	30.1	30.5
8H	25.8	26.4	26.3	26.8	27.3	29.2	29.8	29.7	30.2	30.7
12H	25.8	26.3	26.3	26.8	27.3	29.3	29.8	29.8	30.3	30.8
12H 4H	25.6	26.3	26.0	26.7	27.1	28.4	29.1	28.9	29.6	30.0
6H	25.8	26.4	26.3	26.9	27.3	29.0	29.6	29.5	30.0	30.5
8H	25.9	26.4	26.4	26.9	27.4	29.2	29.7	29.7	30.2	30.7
Variations with the observer position at spacings(CIE Pub.117):										
S = 1.0H	+ 0.4 / - 0.4					+ 0.1 / - 0.2				
1.5H	+ 0.4 / - 0.8					+ 0.2 / - 0.3				
2.0H	+ 0.5 / - 1.1					+ 0.5 / - 0.7				

CIE Pub.117, 465.6 lm Total Lamp Luminous Flux Correct (8log(F/F0) = -2.7)
 Area: 0.008 m2

C Range: 0 - 360DEG
 C Interval: 90.0DEG
 Test Speed: HIGH
 Temperature:25.3°C
 Operators:DAMIN
 Test Date:2023-08-25

Range: 0 - 180DEG
 Interval: 1.0DEG
 Test System:EVERFINE GO-2000B_V1 SYSTEM V2.00.471
 Humidity:65.0%
 Test Distance:4.880m [K=1.0000]
 Remarks:

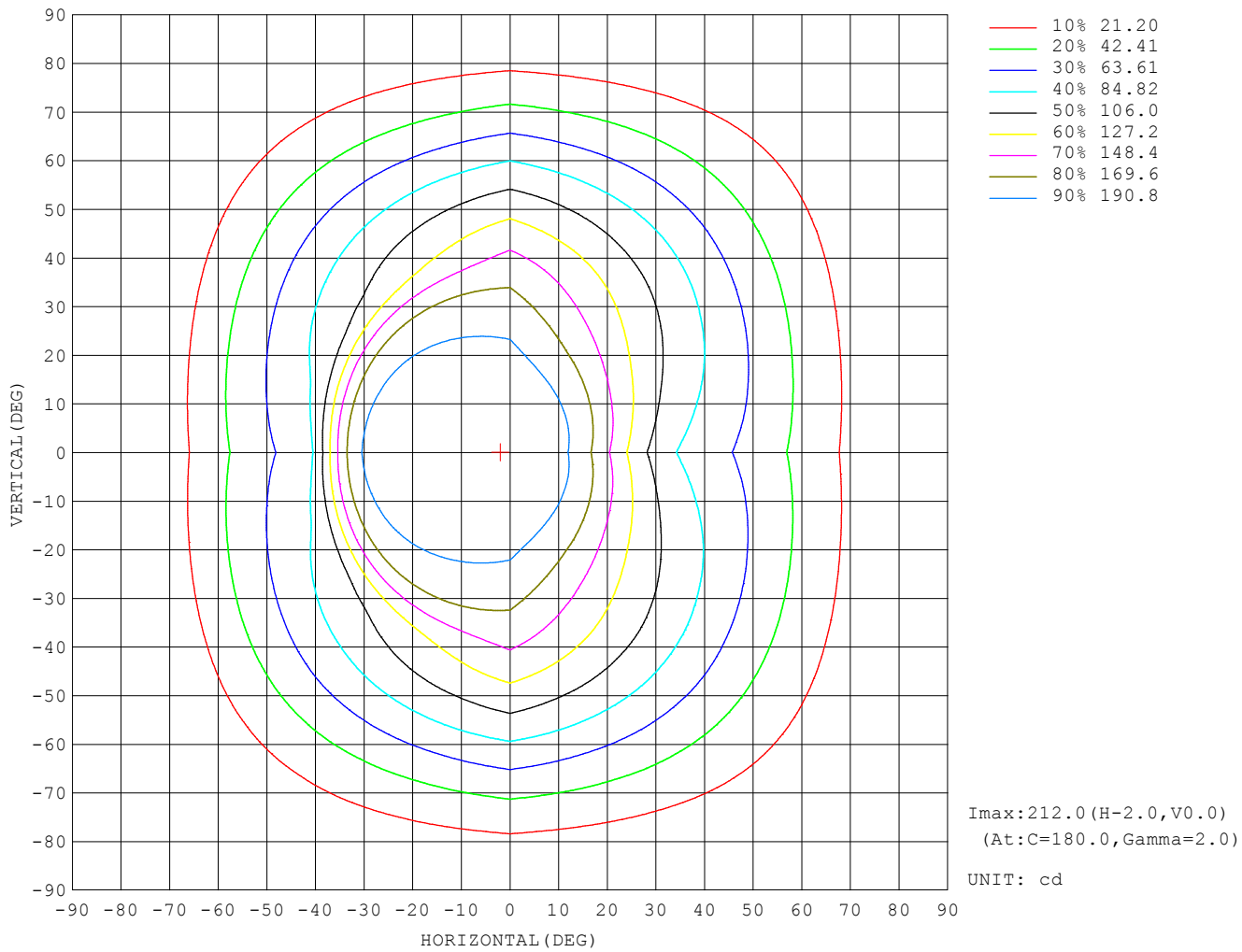
UTILIZATION FACTORS TABLE

REFLECTANCE										
Ceiling	0.8	0.8	0.8	0.7	0.7	0.7	0.5	0.5	0.5	0
Walls	0.7	0.5	0.3	0.7	0.5	0.3	0.7	0.5	0.3	0
Working plane	0.2	0.2	0.2	0.2	0.2	0.2	0.2	0.2	0.2	0
ROOM INDEX	UTILIZATION FACTORS (PERCENT) $k(RI) \times RCR = 5$									
$k = 0.60$	62	51	45	61	51	44	60	50	44	38
0.80	72	61	54	71	61	54	69	60	54	47
1.00	80	70	63	79	69	63	76	70	62	55
1.25	87	77	71	85	76	70	82	75	69	62
1.50	91	82	76	90	81	75	87	80	74	67
2.00	97	90	84	96	89	83	92	86	81	74
2.50	101	94	89	99	92	88	95	90	85	77
3.00	104	98	93	102	96	92	98	93	89	81
4.00	107	102	98	105	101	97	101	97	94	85
5.00	110	105	102	107	103	100	103	99	97	87
ROOM INDEX	UF (total)									Direct
According to DIN EN 13032-2 2004			Suspended				SHRNOM = 1.25			

C Range: 0 - 360DEG
 C Interval: 90.0DEG
 Test Speed: HIGH
 Temperature: 25.3°C
 Operators: DAMIN
 Test Date: 2023-08-25

Range: 0 - 180DEG
 Interval: 1.0DEG
 Test System: EVERFINE GO-2000B_V1 SYSTEM V2.00.471
 Humidity: 65.0%
 Test Distance: 4.880m [K=1.0000]
 Remarks:

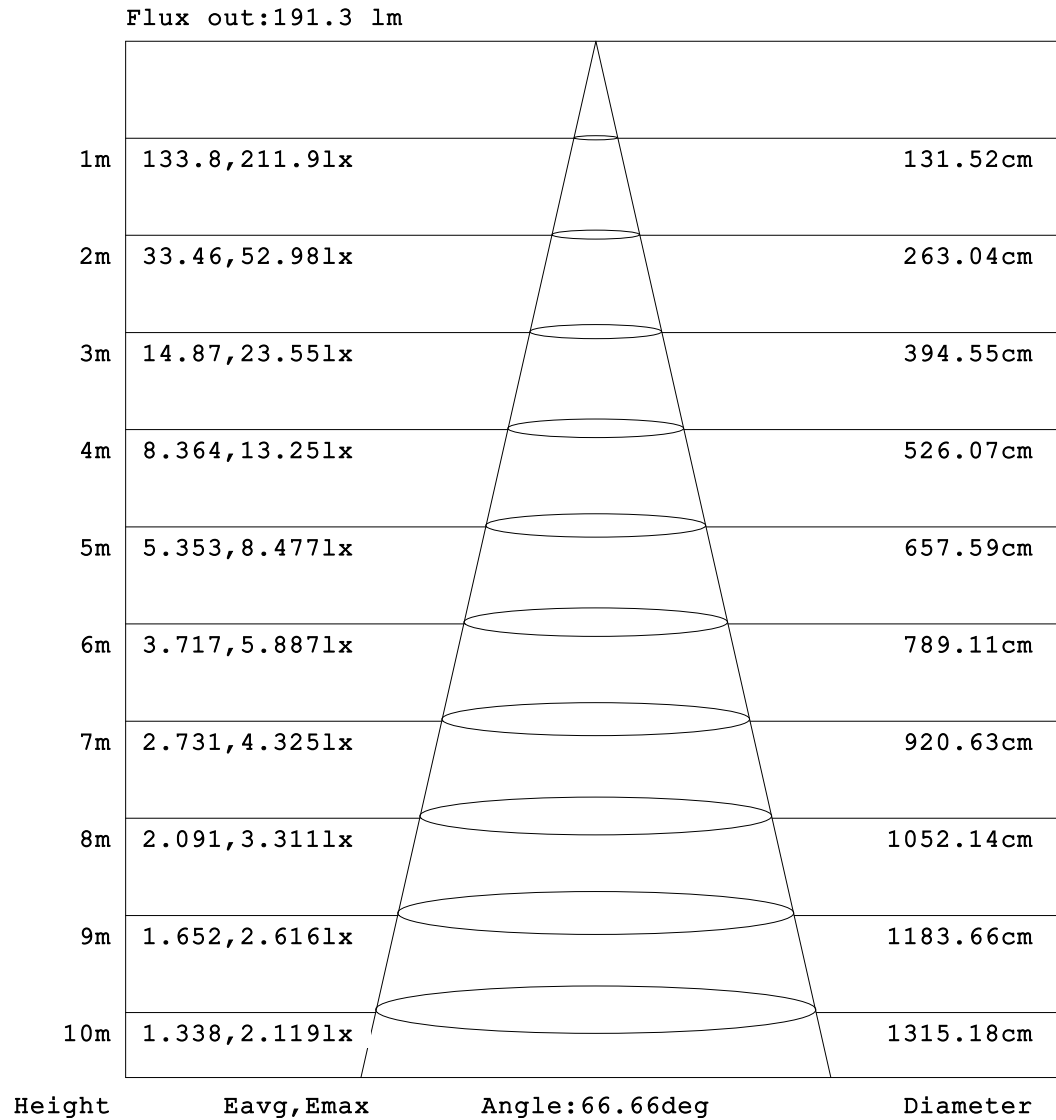
ISOCANDELA DIAGRAM



C Range: 0 - 360DEG
 C Interval: 90.0DEG
 Test Speed: HIGH
 Temperature: 25.3°C
 Operators: DAMIN
 Test Date: 2023-08-25

Range: 0 - 180DEG
 Interval: 1.0DEG
 Test System: EVERFINE GO-2000B_V1 SYSTEM V2.00.471
 Humidity: 65.0%
 Test Distance: 4.880m [K=1.0000]
 Remarks:

AAI Figure

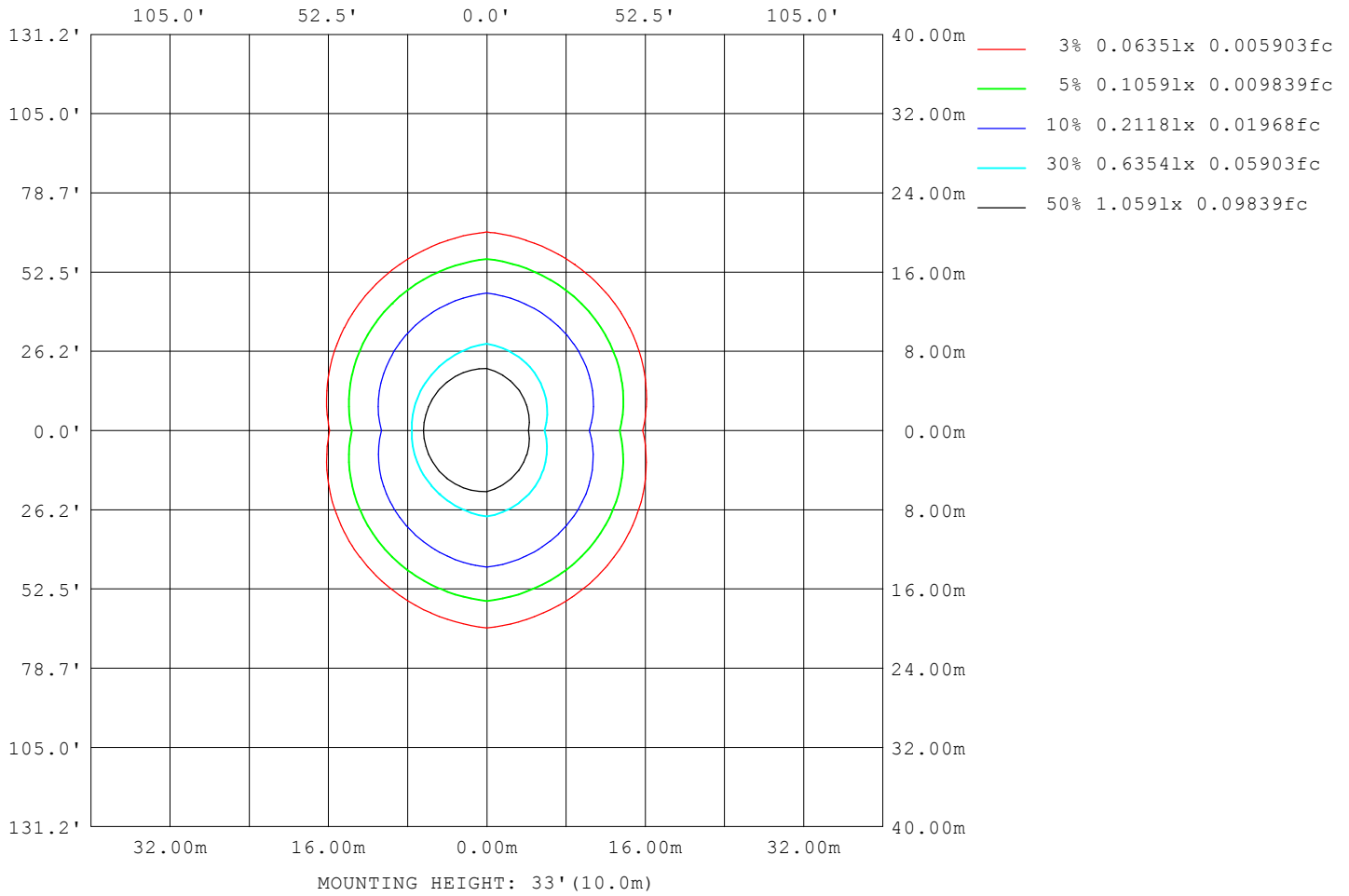


Note:The Curves indicate the illuminated area and the average illumination when the luminaire is at different distance.

C Range: 0 - 360DEG
 C Interval: 90.0DEG
 Test Speed: HIGH
 Temperature:25.3°C
 Operators:DAMIN
 Test Date:2023-08-25

Range: 0 - 180DEG
 Interval: 1.0DEG
 Test System:EVERFINE GO-2000B_V1 SYSTEM V2.00.471
 Humidity:65.0%
 Test Distance:4.880m [K=1.0000]
 Remarks:

ISOLUX DIAGRAM



C Range: 0 - 360DEG
 C Interval: 90.0DEG
 Test Speed: HIGH
 Temperature: 25.3°C
 Operators: DAMIN
 Test Date: 2023-08-25

Range: 0 - 180DEG
 Interval: 1.0DEG
 Test System: EVERFINE GO-2000B_V1 SYSTEM V2.00.471
 Humidity: 65.0%
 Test Distance: 4.880m [K=1.0000]
 Remarks:

LED Avg.L Report

NAME: LED Strip	TYPE: Indoor lighting	WEIGHT: 20g
SPEC.: 2835 128LED	DIM.: 1000*8*1.2MM	SERIAL No.: 20230808010
MFR.: EVERFINE	SUR.: 1000*8MM	Shielding Angle:

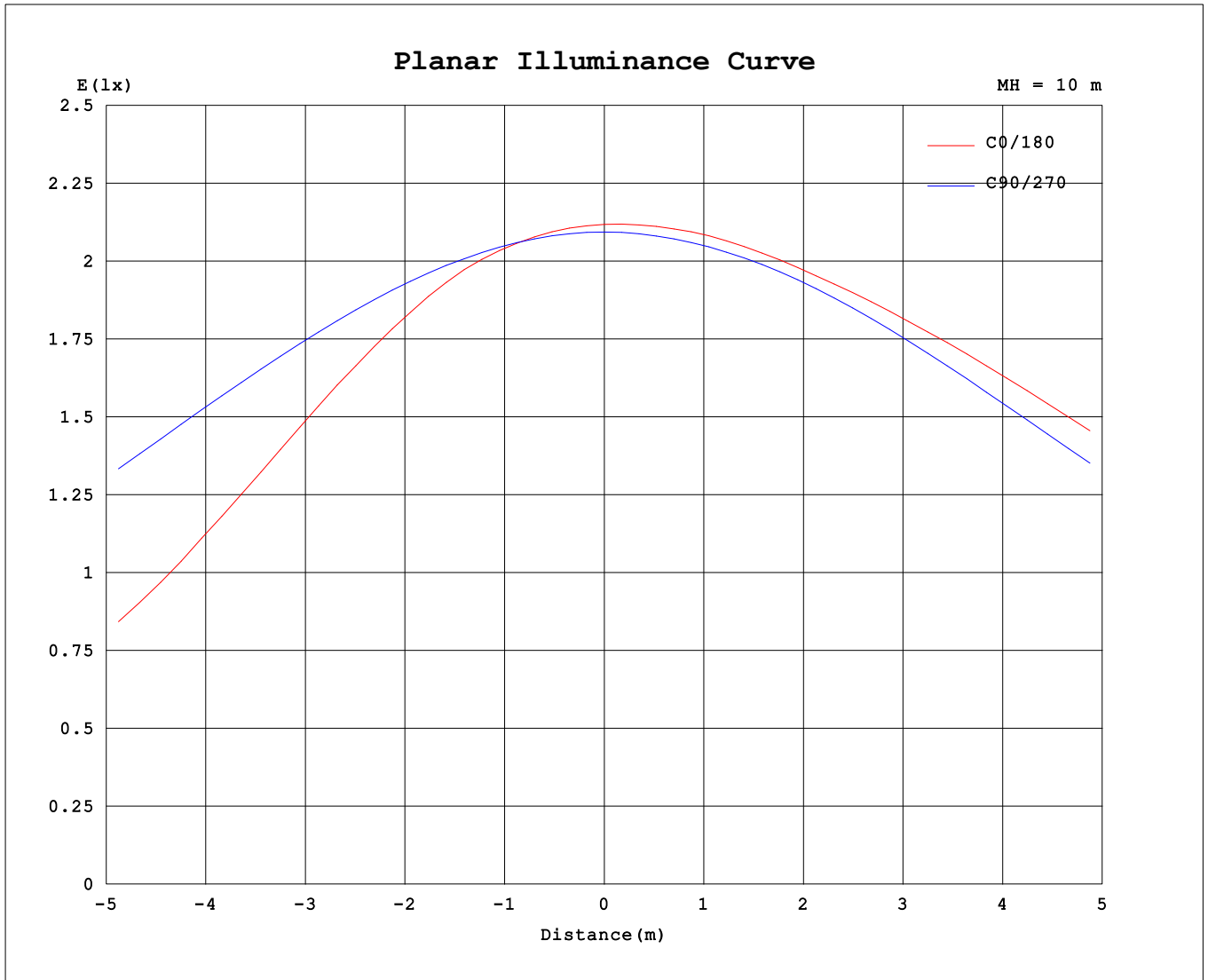
AvgL	cd/m2
L_0~180 (65) av	7367
L_0~180 (75) av	3638
L_0~180 (85) av	3091
L_90~270 (65) av	19260
L_90~270 (75) av	14912
L_90~270 (85) av	9972
L_45 (65) av	14774
L_45 (75) av	10607
L_45 (85) av	7489

Standard: GB/T 29293-2012

C Range: 0 - 360DEG
 C Interval: 90.0DEG
 Test Speed: HIGH
 Temperature:25.3℃
 Operators:DAMIN
 Test Date:2023-08-25

Range: 0 - 180DEG
 Interval: 1.0DEG
 Test System:EVERFINE GO-2000B_V1 SYSTEM V2.00.471
 Humidity:65.0%
 Test Distance:4.880m [K=1.0000]
 Remarks:

Planar Illuminance Curve



C Range: 0 - 360DEG
 C Interval: 90.0DEG
 Test Speed: HIGH
 Temperature: 25.3°C
 Operators: DAMIN
 Test Date: 2023-08-25

Range: 0 - 180DEG
 Interval: 1.0DEG
 Test System: EVERFINE GO-2000B_V1 SYSTEM V2.00.471
 Humidity: 65.0%
 Test Distance: 4.880m [K=1.0000]
 Remarks:

LUMINOUS DISTRIBUTION INTENSITY DATA

Table--1

UNIT: cd

C (DEG) \ □ (DEG)	0	90	180	270															
0	212	209	212	209															
5	208	208	212	208															
10	198	205	210	206															
15	178	201	208	202															
20	151	194	205	196															
25	122	186	201	188															
30	98.3	175	193	178															
35	82.8	164	154	167															
40	72.9	150	89.0	153															
45	64.8	135	68.6	137															
50	56.0	119	59.8	121															
55	46.2	101	48.3	103															
60	36.2	82.7	36.5	84.4															
65	26.3	64.4	23.5	65.8															
70	17.3	47.1	11.6	47.8															
75	10.1	30.6	4.99	31.1															
80	4.49	17.2	3.94	17.4															
85	1.07	6.99	3.24	6.92															
90	0.34	0.96	2.16	0.84															
95	0.31	0.55	0.59	0.57															
100	0.33	0.60	0.36	0.60															
105	0.40	0.70	0.39	0.71															
110	0.51	0.83	0.45	0.83															
115	0.64	0.95	0.54	0.95															
120	0.78	1.07	0.64	1.07															
125	0.93	1.19	0.77	1.19															
130	1.09	1.30	0.90	1.30															
135	1.23	1.42	1.04	1.42															
140	1.39	1.54	1.19	1.54															
145	1.53	1.66	1.35	1.65															
150	1.64	1.78	1.50	1.76															
155	1.75	1.88	1.64	1.87															
160	1.87	1.98	1.78	1.97															
165	2.01	2.07	1.91	2.06															
170	2.11	2.15	2.03	2.13															
175	2.18	2.20	2.14	2.19															
180	2.21	2.23	2.21	2.23															

C Range: 0 - 360DEG
 C Interval: 90.0DEG
 Test Speed: HIGH
 Temperature:25.3°C
 Operators:DAMIN
 Test Date:2023-08-25

□ Range: 0 - 180DEG
 □ Interval: 1.0DEG
 Test System:EVERFINE GO-2000B_V1 SYSTEM V2.00.471
 Humidity:65.0%
 Test Distance:4.880m [K=1.0000]
 Remarks: