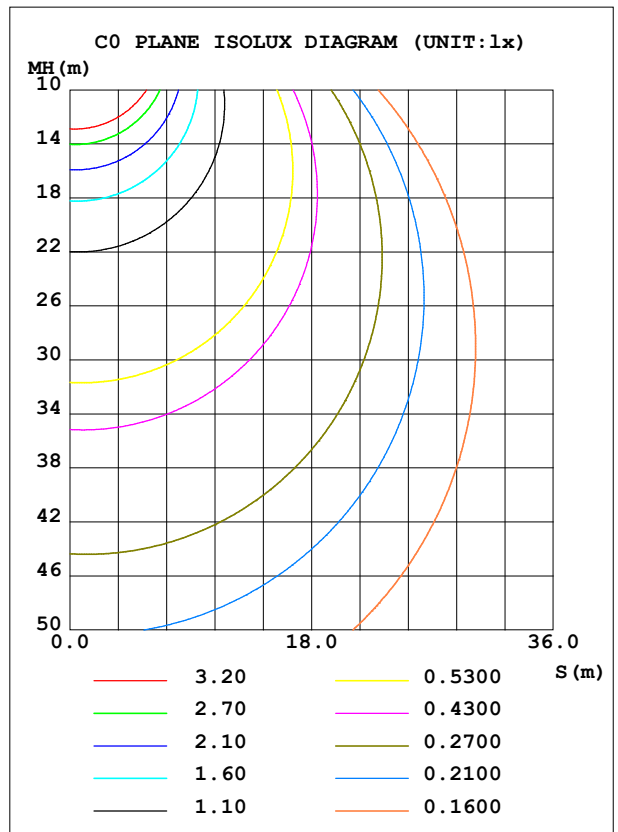
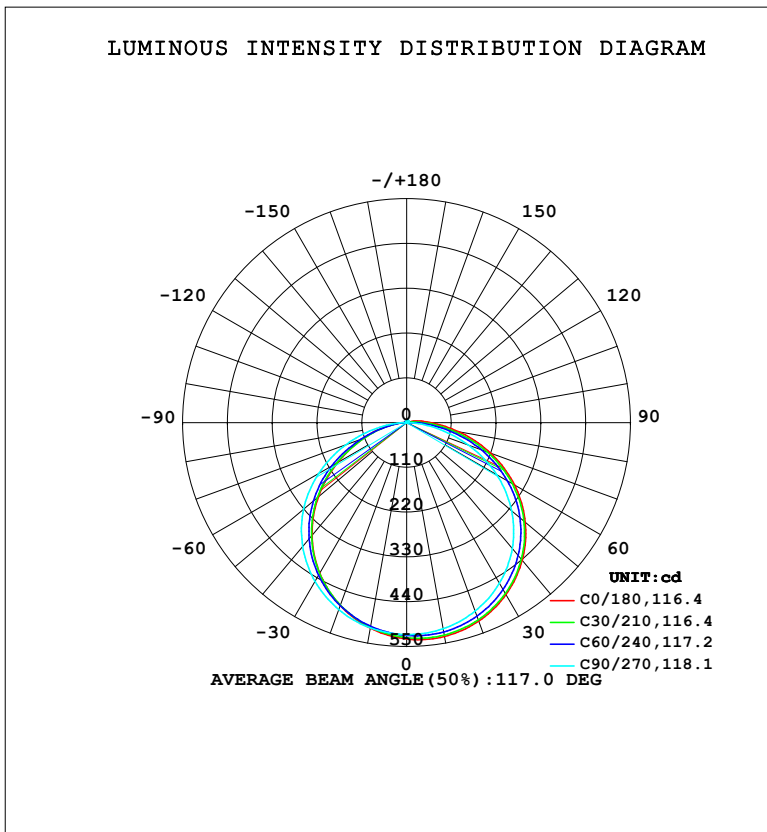


LUMINAIRE PHOTOMETRIC TEST REPORT

NAME: LED Strip	TYPE: Indoor lighting	WEIGHT: 75g
SPEC.: 2835 210LED	DIM.: 1000*12*1.2MM	SERIAL No.: 20230521004
MFR.: EVERFINE	SUR.: 1000*12MM	Shielding Angle:

DATA OF LAMP		PHOTOMETRIC DATA			
MODEL: 210B-48 (WCP) -HR-ME-TR-EP		Imax (cd)	534.7	S/MH (C0/180)	1.20
NOMINAL POWER (W)	13.5914	LOR (%)	100.0	S/MH (C90/270)	1.29
RATED VOLTAGE (V)	DC 48	TOTAL FLUX (lm)	1635.5	<input type="checkbox"/> UP, DN (C0-180)	1.1, 49.9
NOMINAL FLUX (lm)	1635.46	CIE CLASS	DIRECT	<input type="checkbox"/> UP, DN (C180-360)	1.2, 47.9
LAMPS INSIDE	1	<input type="checkbox"/> up (%)	2.3	CIBSE SHR NOM	1.25
TEST VOLTAGE (V)	DC 48	<input type="checkbox"/> down (%)	97.7	CIBSE SHR MAX	1.35



C Range: 0 - 360DEG
 C Interval: 15.0DEG
 Test Speed: HIGH
 Temperature: 25.3°C
 Operators: DAMIN
 Test Date: 2023-05-21

Range: 0 - 180DEG
 Interval: 1.0DEG
 Test System: EVERFINE GO-2000B_V1 SYSTEM V2.00.471
 Humidity: 65.0%
 Test Distance: 4.880m [K=1.0000]
 Remarks:

ZONAL FLUX DIAGRAM

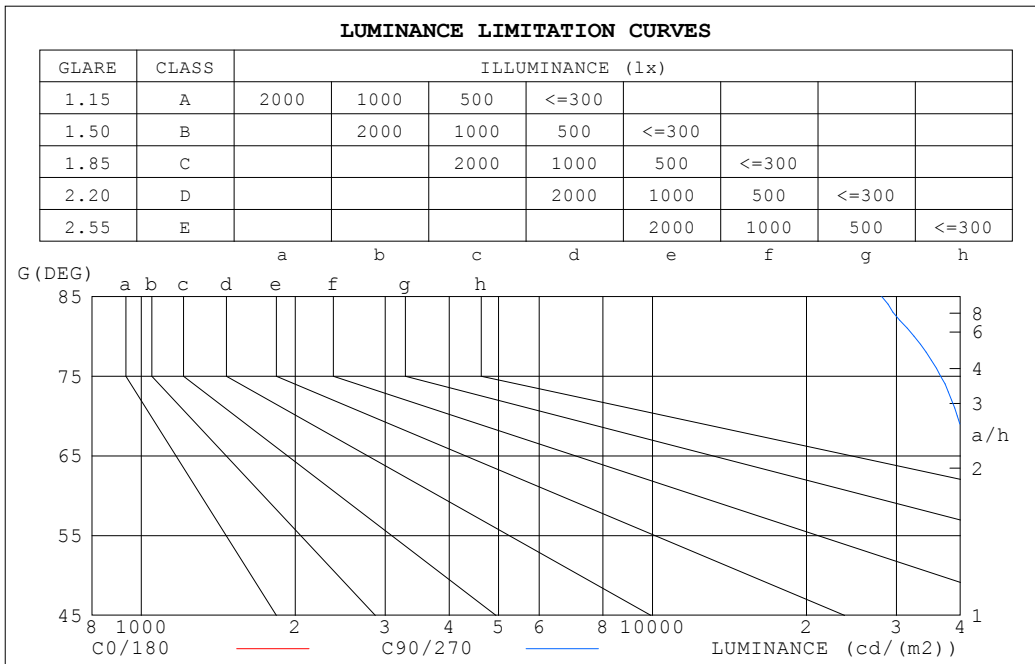
ZONAL FLUX DIAGRAM:

°	C0	C45	C90	C135	C180	C225	C270	C315	°	□ zone	□ total	%lum,lamp
10	533.4	527.5	514.1	504.0	512.8	509.6	512.0	520.8	0- 10	49.64	49.64	3.04,3.04
20	518.6	512.2	492.5	473.2	477.8	477.0	488.5	506.4	10- 20	143.0	192.6	11.8,11.8
30	487.8	481.0	455.7	427.6	427.1	429.0	450.3	475.7	20- 30	219.0	411.6	25.2,25.2
40	441.4	434.2	403.8	367.3	361.6	366.3	397.5	429.4	30- 40	268.0	679.6	41.6,41.6
50	380.4	372.0	336.6	293.3	282.9	289.8	330.5	370.3	40- 50	283.0	962.6	58.9,58.9
60	305.9	294.9	255.2	208.1	195.4	201.8	249.5	296.1	50- 60	260.4	1223	74.8,74.8
70	219.7	204.9	161.9	123.1	113.5	109.9	158.5	206.8	60- 70	202.5	1425	87.2,87.2
80	129.5	108.1	67.65	51.24	46.09	38.45	66.80	105.6	70- 80	124.1	1550	94.7,94.7
90	59.27	33.27	5.331	6.810	4.708	3.793	4.896	50.53	80- 90	48.56	1598	97.7,97.7
100	25.50	7.143	2.158	2.742	2.343	2.273	2.227	20.46	90-100	14.74	1613	98.6,98.6
110	4.292	2.161	2.531	3.053	2.937	2.929	2.839	3.259	100-110	5.425	1618	98.9,98.9
120	2.641	2.725	3.108	3.553	3.571	3.586	3.483	3.150	110-120	3.025	1621	99.1,99.1
130	3.286	3.357	3.713	4.166	4.171	4.209	4.087	3.753	120-130	3.189	1624	99.3,99.3
140	3.929	3.993	4.323	4.745	4.725	4.772	4.659	4.356	130-140	3.221	1628	99.5,99.5
150	4.566	4.646	5.183	5.336	5.221	5.273	5.185	5.020	140-150	2.992	1631	99.7,99.7
160	5.226	5.271	5.655	6.014	5.697	5.702	5.661	5.689	150-160	2.481	1633	99.9,99.9
170	5.813	5.817	6.032	6.641	6.081	6.039	6.061	6.295	160-170	1.669	1635	100,100
180	6.206	6.193	6.264	6.621	6.237	6.169	6.277	6.694	170-180	0.5981	1635	100,100
DEG	LUMINOUS INTENSITY:cd									UNIT:lm		

C Range: 0 - 360DEG
 C Interval: 15.0DEG
 Test Speed: HIGH
 Temperature:25.3°C
 Operators:DAMIN
 Test Date:2023-05-21

□ Range: 0 - 180DEG
 □ Interval: 1.0DEG
 Test System:EVERFINE GO-2000B_V1 SYSTEM V2.00.471
 Humidity:65.0%
 Test Distance:4.880m [K=1.0000]
 Remarks:

LUMINANCE LIMITATION CURVES



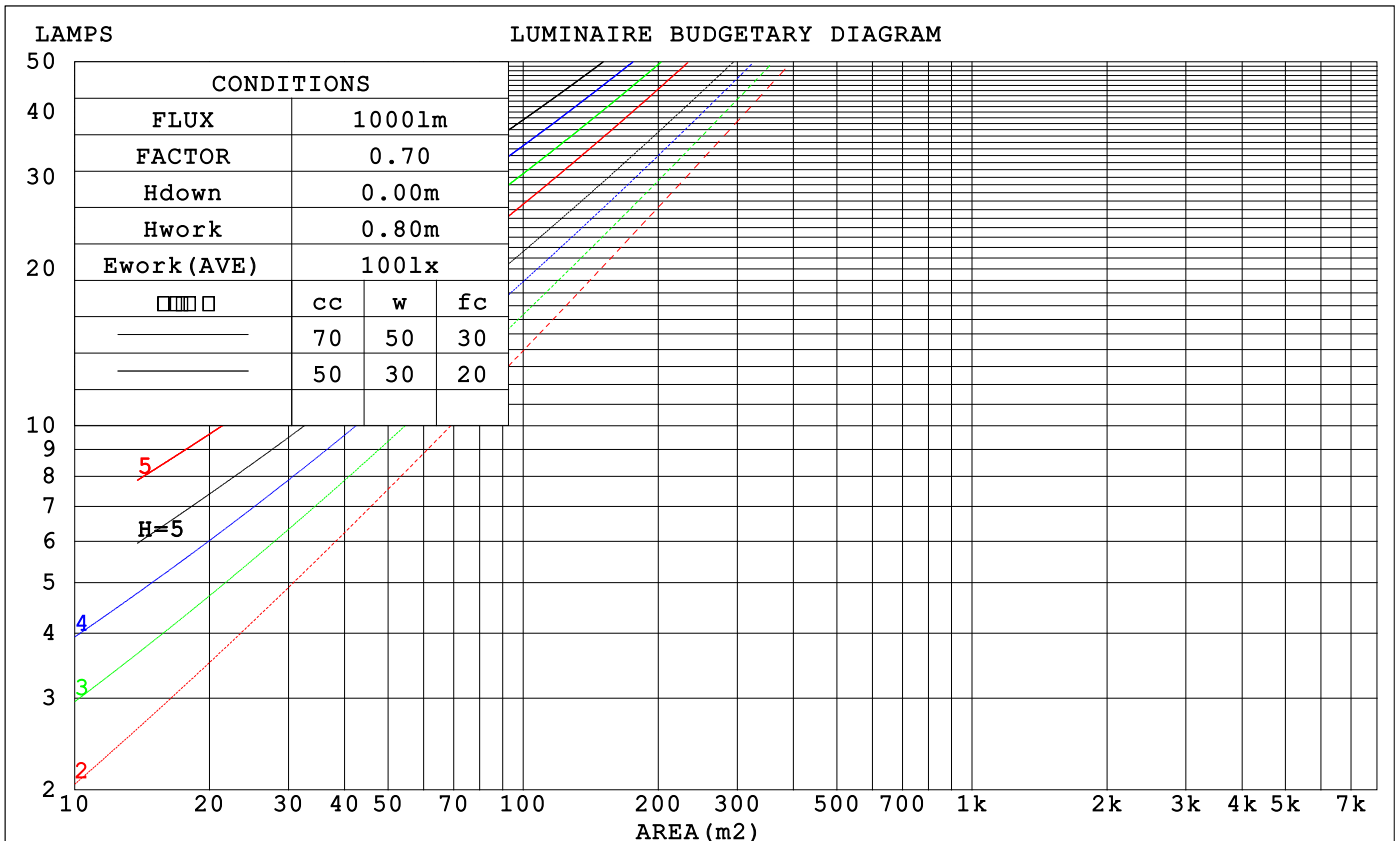
LUMINANCE cd/(m2)		
G (DEG)	C0/180	C90/270
85	85065	28059
80	62123	32463
75	56099	36624
70	53532	39442
65	52105	41361
60	50992	42525
55	50081	43228
50	49322	43641
45	48646	43851

C Range: 0 - 360DEG
 C Interval: 15.0DEG
 Test Speed: HIGH
 Temperature: 25.3°C
 Operators: DAMIN
 Test Date: 2023-05-21

Range: 0 - 180DEG
 Interval: 1.0DEG
 Test System: EVERFINE GO-2000B_V1 SYSTEM V2.00.471
 Humidity: 65.0%
 Test Distance: 4.880m [K=1.0000]
 Remarks:

CU AND LUMINAIRE BUDGETARY ESTIMATE DIAGRAM

□cc	80%			70%			50%			30%			10%			0
□w	50%	30%	10%	50%	30%	10%	50%	30%	10%	50%	30%	10%	50%	30%	10%	0
□fc	20%			20%			20%			20%			20%			0
RCR	RCR:Room Cavity Ratio			Coefficients of Utilization(CU)												
0.0	1.19	1.19	1.19	1.15	1.15	1.15	1.10	1.10	1.10	1.05	1.05	1.05	.00	.00	.00	.98
1.0	1.02	.98	.94	.00	.96	.92	.95	.92	.89	.91	.88	.86	.87	.85	.83	.80
2.0	.89	.82	.76	.87	.80	.75	.83	.77	.73	.79	.75	.71	.76	.72	.69	.66
3.0	.78	.69	.63	.76	.68	.62	.73	.66	.61	.70	.64	.59	.67	.62	.58	.56
4.0	.69	.60	.53	.67	.59	.52	.64	.57	.51	.62	.55	.50	.59	.54	.49	.47
5.0	.61	.52	.45	.60	.51	.45	.58	.50	.44	.55	.49	.43	.53	.47	.43	.41
6.0	.55	.46	.39	.54	.45	.39	.52	.44	.39	.50	.43	.38	.48	.42	.37	.35
7.0	.50	.41	.35	.49	.40	.34	.47	.40	.34	.45	.39	.34	.44	.38	.33	.31
8.0	.45	.37	.31	.45	.36	.31	.43	.36	.30	.42	.35	.30	.40	.34	.30	.28
9.0	.42	.33	.28	.41	.33	.28	.40	.32	.27	.38	.32	.27	.37	.31	.27	.25
10.0	.38	.30	.25	.38	.30	.25	.37	.30	.25	.35	.29	.24	.34	.29	.24	.22



C Range: 0 - 360DEG
 C Interval: 15.0DEG
 Test Speed: HIGH
 Temperature: 25.3°C
 Operators: DAMIN
 Test Date: 2023-05-21

□ Range: 0 - 180DEG
 □ Interval: 1.0DEG
 Test System: EVERFINE GO-2000B_V1 SYSTEM V2.00.471
 Humidity: 65.0%
 Test Distance: 4.880m [K=1.0000]
 Remarks:

WEC AND CCEC

□cc	80%			70%			50%			30%			10%			0
□w	50%	30%	10%	50%	30%	10%	50%	30%	10%	50%	30%	10%	50%	30%	10%	0
□fc	20%			20%			20%			20%			20%			0
RCR	RCR:Room Cavity Ratio						Wall Exitance Coefficients (WEC)									
0.0																
1.0	.326	.185	.059	.318	.181	.058	.303	.174	.056	.290	.167	.054	.277	.161	.052	
2.0	.301	.165	.051	.294	.162	.050	.281	.157	.049	.269	.151	.047	.258	.146	.046	
3.0	.277	.147	.044	.270	.145	.044	.259	.140	.043	.248	.136	.042	.238	.132	.041	
4.0	.254	.132	.039	.249	.130	.038	.238	.126	.038	.229	.123	.037	.220	.119	.036	
5.0	.234	.119	.035	.229	.118	.034	.220	.115	.034	.211	.112	.033	.203	.109	.033	
6.0	.216	.109	.031	.212	.107	.031	.204	.105	.030	.196	.102	.030	.189	.100	.030	
7.0	.201	.099	.028	.197	.098	.028	.190	.096	.028	.183	.094	.027	.176	.092	.027	
8.0	.187	.092	.026	.184	.091	.026	.177	.089	.025	.171	.087	.025	.165	.085	.025	
9.0	.175	.085	.024	.172	.084	.024	.166	.082	.023	.161	.081	.023	.155	.079	.023	
10.0	.165	.079	.022	.162	.078	.022	.157	.077	.022	.151	.075	.021	.147	.074	.021	

□cc	80%			70%			50%			30%			10%			0
□w	50%	30%	10%	50%	30%	10%	50%	30%	10%	50%	30%	10%	50%	30%	10%	0
□fc	20%			20%			20%			20%			20%			0
RCR	RCR:Room Cavity Ratio						Ceiling Cavity Exitance Coefficients (CCEC)									
0.0	.208	.208	.208	.178	.178	.178	.121	.121	.121	.070	.070	.070	.022	.022	.022	
1.0	.199	.174	.151	.170	.149	.130	.116	.102	.090	.067	.059	.052	.021	.019	.017	
2.0	.191	.150	.115	.164	.129	.099	.112	.089	.069	.065	.052	.040	.021	.017	.013	
3.0	.184	.132	.091	.157	.114	.079	.108	.079	.055	.062	.046	.033	.020	.015	.011	
4.0	.176	.119	.075	.151	.103	.066	.104	.072	.046	.060	.042	.027	.019	.014	.009	
5.0	.168	.109	.065	.145	.094	.056	.100	.066	.040	.058	.039	.024	.019	.013	.008	
6.0	.161	.100	.057	.139	.087	.049	.096	.061	.035	.055	.036	.021	.018	.012	.007	
7.0	.154	.093	.051	.133	.081	.044	.092	.057	.031	.053	.033	.019	.017	.011	.006	
8.0	.148	.088	.046	.127	.076	.041	.088	.053	.029	.051	.032	.017	.017	.010	.006	
9.0	.142	.083	.043	.122	.072	.038	.085	.051	.027	.049	.030	.016	.016	.010	.005	
10.0	.136	.079	.040	.117	.068	.035	.081	.048	.025	.047	.028	.015	.015	.009	.005	

C Range: 0 - 360DEG
 C Interval: 15.0DEG
 Test Speed: HIGH
 Temperature:25.3°C
 Operators:DAMIN
 Test Date:2023-05-21

□ Range: 0 - 180DEG
 □ Interval: 1.0DEG
 Test System:EVERFINE GO-2000B_V1 SYSTEM V2.00.471
 Humidity:65.0%
 Test Distance:4.880m [K=1.0000]
 Remarks:

UGR(Unified Glare Rating) Table

ceiling/cavity	0.7	0.7	0.5	0.5	0.3	0.7	0.7	0.5	0.5	0.3
walls	0.5	0.3	0.5	0.3	0.3	0.5	0.3	0.5	0.3	0.3
working plane	0.2	0.2	0.2	0.2	0.2	0.2	0.2	0.2	0.2	0.2
Room dimensions	Viewed crosswise					Viewed endwise				
x = 2H y = 2H	25.2	26.8	25.5	27.0	27.3	24.7	26.2	25.0	26.4	26.7
3H	27.2	28.6	27.5	28.9	29.2	26.3	27.7	26.6	28.0	28.3
4H	28.1	29.4	28.5	29.7	30.0	26.9	28.3	27.3	28.6	28.9
6H	29.0	30.2	29.3	30.5	30.9	27.4	28.6	27.7	28.9	29.3
8H	29.3	30.6	29.7	30.9	31.2	27.5	28.7	27.9	29.0	29.4
12H	29.8	30.9	30.1	31.3	31.6	27.6	28.8	28.0	29.1	29.4
4H 2H	25.9	27.2	26.3	27.5	27.8	25.5	26.8	25.8	27.1	27.4
3H	28.1	29.2	28.4	29.6	29.9	27.3	28.5	27.7	28.8	29.2
4H	29.1	30.2	29.5	30.5	30.9	28.1	29.2	28.5	29.6	29.9
6H	30.1	31.1	30.6	31.5	31.9	28.7	29.7	29.2	30.1	30.5
8H	30.6	31.5	31.0	31.9	32.3	28.9	29.8	29.4	30.2	30.7
12H	31.1	31.9	31.6	32.3	32.8	29.0	29.9	29.5	30.3	30.7
8H 4H	29.4	30.3	29.9	30.7	31.2	28.6	29.5	29.0	29.9	30.3
6H	30.6	31.4	31.1	31.8	32.3	29.4	30.1	29.9	30.6	31.1
8H	31.3	31.9	31.8	32.4	32.9	29.7	30.4	30.2	30.9	31.4
12H	31.9	32.5	32.5	33.0	33.5	30.0	30.5	30.5	31.0	31.6
12H 4H	29.5	30.3	29.9	30.7	31.2	28.7	29.5	29.1	29.9	30.4
6H	30.7	31.4	31.2	31.9	32.4	29.6	30.2	30.1	30.7	31.2
8H	31.4	32.0	31.9	32.5	33.0	30.0	30.5	30.5	31.0	31.6
Variations with the observer position at spacings(CIE Pub.117):										
S = 1.0H	+ 0.1 / - 0.1					+ 0.1 / - 0.2				
1.5H	+ 0.2 / - 0.3					+ 0.2 / - 0.4				
2.0H	+ 0.2 / - 0.3					+ 0.2 / - 0.5				

CIE Pub.117, 1635 lm Total Lamp Luminous Flux Correct (8log(F/F0) = 1.7)
 Area: 0.012 m2

C Range: 0 - 360DEG	<input type="checkbox"/> Range: 0 - 180DEG
C Interval: 15.0DEG	<input type="checkbox"/> Interval: 1.0DEG
Test Speed: HIGH	Test System:EVERFINE GO-2000B_V1 SYSTEM V2.00.471
Temperature:25.3°C	Humidity:65.0%
Operators:DAMIN	Test Distance:4.880m [K=1.0000]
Test Date:2023-05-21	Remarks:

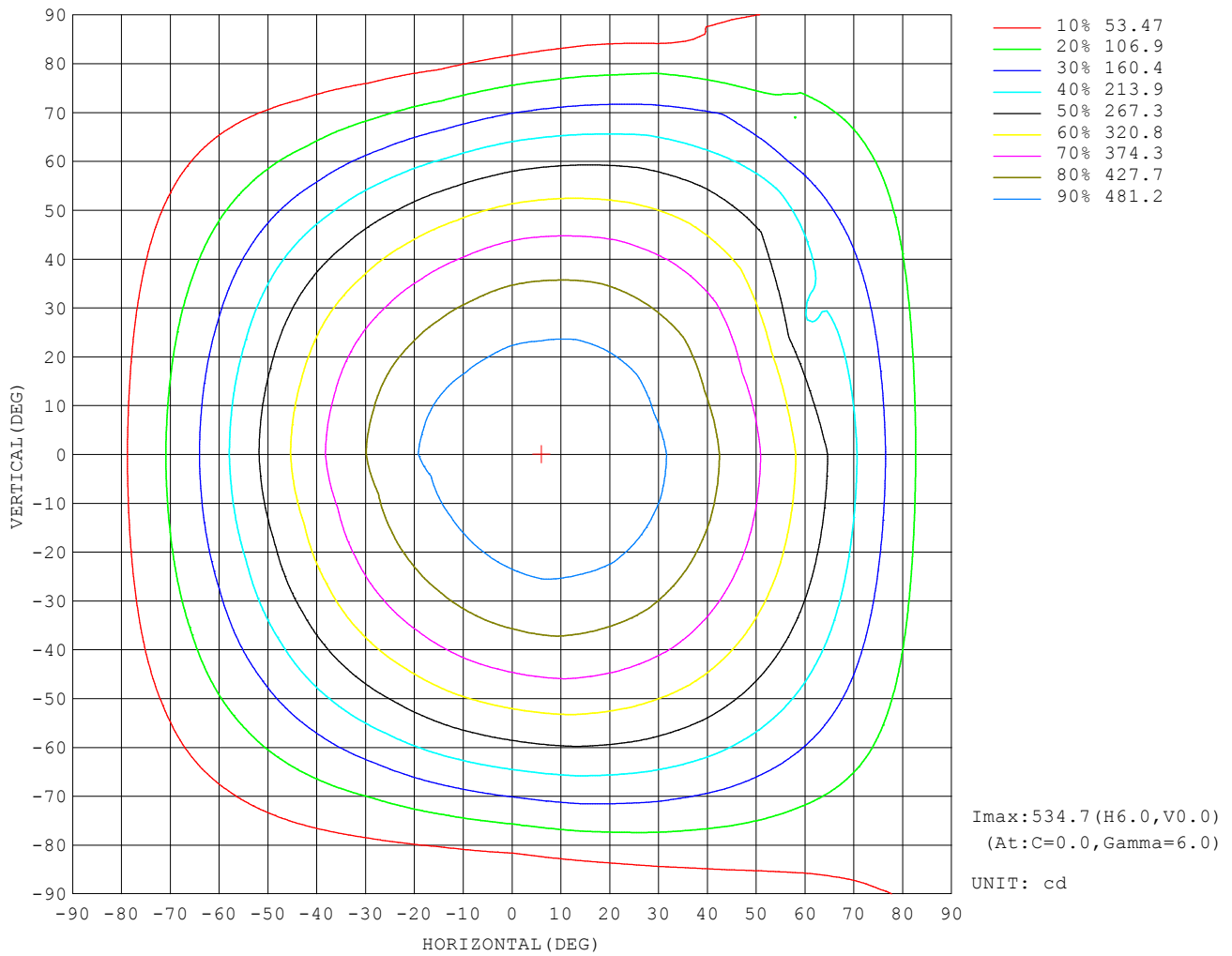
UTILIZATION FACTORS TABLE

REFLECTANCE										
Ceiling	0.8	0.8	0.8	0.7	0.7	0.7	0.5	0.5	0.5	0
Walls	0.7	0.5	0.3	0.7	0.5	0.3	0.7	0.5	0.3	0
Working plane	0.2	0.2	0.2	0.2	0.2	0.2	0.2	0.2	0.2	0
ROOM INDEX	UTILIZATION FACTORS (PERCENT) $k(RI) \times RCR = 5$									
$k = 0.60$	56	44	37	55	44	37	54	43	36	30
0.80	66	54	46	65	53	46	63	52	45	38
1.00	74	63	55	73	62	55	70	63	54	47
1.25	81	70	63	80	69	62	77	68	61	54
1.50	86	76	68	84	75	68	81	73	67	59
2.00	93	84	77	91	83	76	87	80	75	66
2.50	97	89	83	95	87	81	91	84	79	71
3.00	101	93	87	98	92	86	94	88	84	75
4.00	105	99	94	102	97	92	98	93	89	80
5.00	107	102	98	105	100	96	100	96	93	83
ROOM INDEX	UF(total)									Direct
According to DIN EN 13032-2 2004			Suspended				SHRNOM = 1.25			

C Range: 0 - 360DEG
 C Interval: 15.0DEG
 Test Speed: HIGH
 Temperature: 25.3°C
 Operators: DAMIN
 Test Date: 2023-05-21

Range: 0 - 180DEG
 Interval: 1.0DEG
 Test System: EVERFINE GO-2000B_V1 SYSTEM V2.00.471
 Humidity: 65.0%
 Test Distance: 4.880m [K=1.0000]
 Remarks:

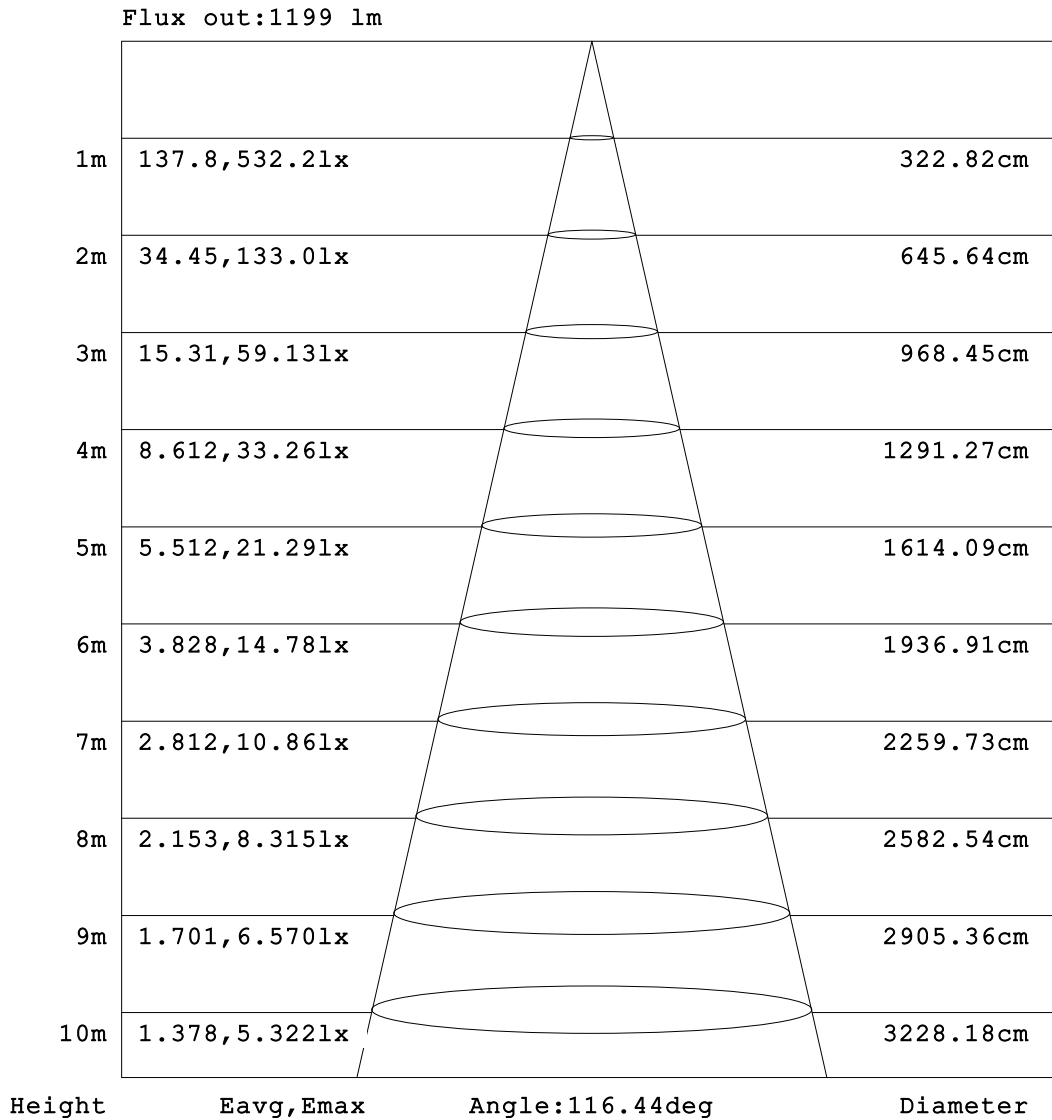
ISOCANDELA DIAGRAM



C Range: 0 - 360DEG
 C Interval: 15.0DEG
 Test Speed: HIGH
 Temperature: 25.3°C
 Operators: DAMIN
 Test Date: 2023-05-21

Range: 0 - 180DEG
 Interval: 1.0DEG
 Test System: EVERFINE GO-2000B_V1 SYSTEM V2.00.471
 Humidity: 65.0%
 Test Distance: 4.880m [K=1.0000]
 Remarks:

AAI Figure

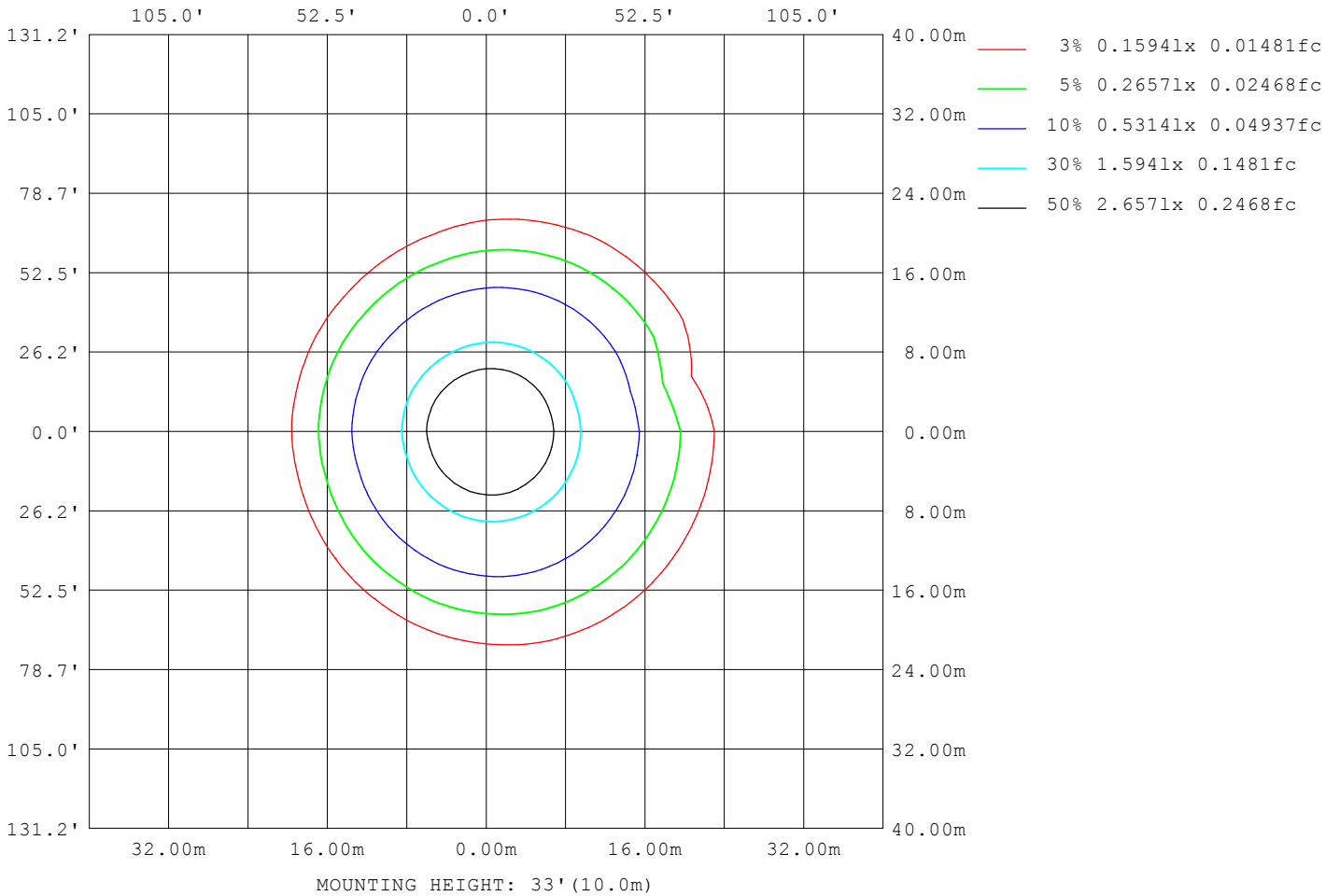


Note:The Curves indicate the illuminated area and the average illumination when the luminaire is at different distance.

C Range: 0 - 360DEG
 C Interval: 15.0DEG
 Test Speed: HIGH
 Temperature:25.3°C
 Operators:DAMIN
 Test Date:2023-05-21

Range: 0 - 180DEG
 Interval: 1.0DEG
 Test System:EVERFINE GO-2000B_V1 SYSTEM V2.00.471
 Humidity:65.0%
 Test Distance:4.880m [K=1.0000]
 Remarks:

ISOLUX DIAGRAM



C Range: 0 - 360DEG
 C Interval: 15.0DEG
 Test Speed: HIGH
 Temperature: 25.3°C
 Operators: DAMIN
 Test Date: 2023-05-21

Range: 0 - 180DEG
 Interval: 1.0DEG
 Test System: EVERFINE GO-2000B_V1 SYSTEM V2.00.471
 Humidity: 65.0%
 Test Distance: 4.880m [K=1.0000]
 Remarks:

LED Avg.L Report

NAME: LED Strip	TYPE: Indoor lighting	WEIGHT: 75g
SPEC.: 2835 210LED	DIM.: 1000*12*1.2MM	SERIAL No.: 20230521004
MFR.: EVERFINE	SUR.: 1000*12MM	Shielding Angle:

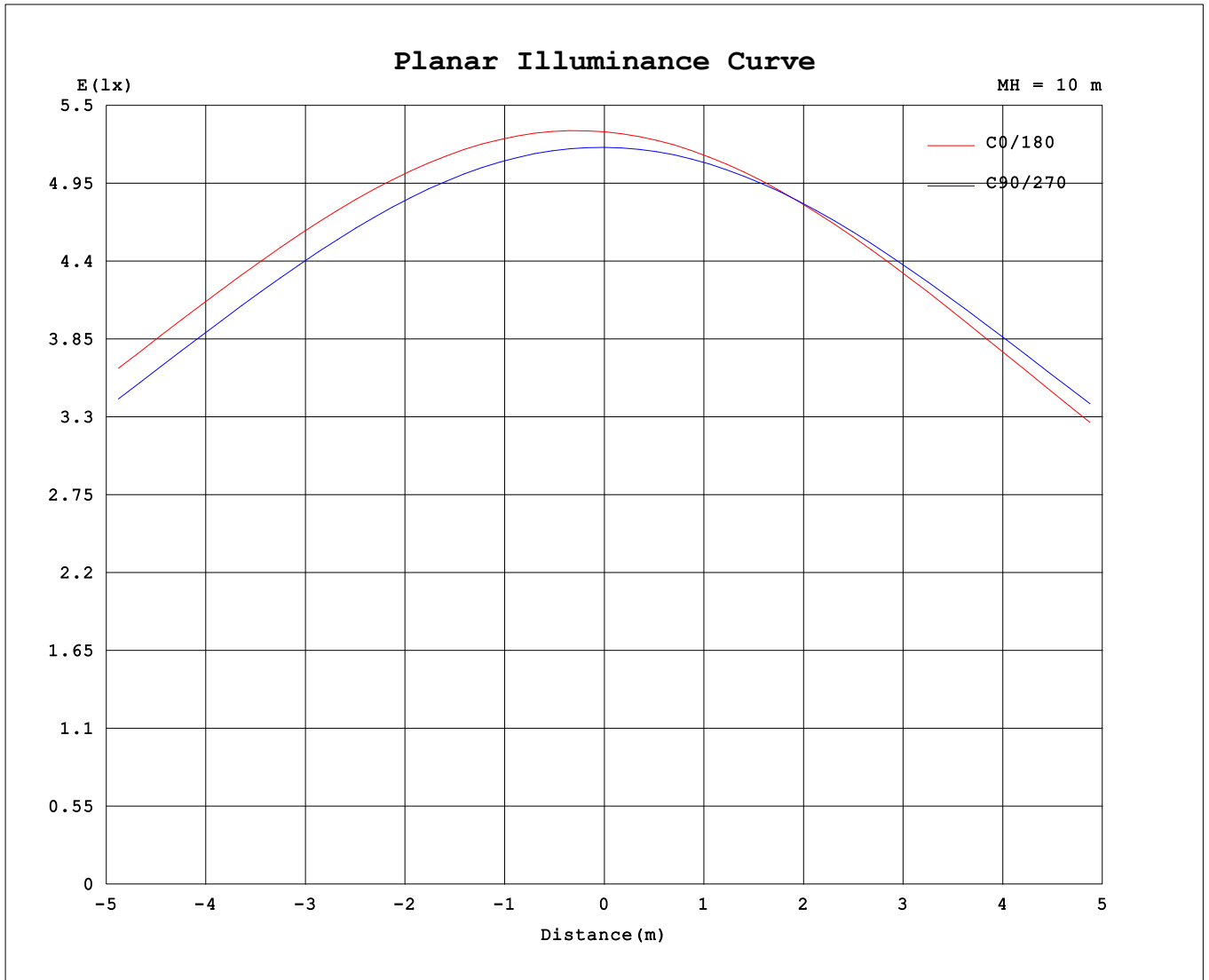
AvgL	cd/m2
L_0~180 (65) av	41080
L_0~180 (75) av	40665
L_0~180 (85) av	52112
L_90~270 (65) av	40895
L_90~270 (75) av	36297
L_90~270 (85) av	28305
L_45 (65) av	40564
L_45 (75) av	38219
L_45 (85) av	41534

Standard: GB/T 29293-2012

C Range: 0 - 360DEG
 C Interval: 15.0DEG
 Test Speed: HIGH
 Temperature:25.3℃
 Operators:DAMIN
 Test Date:2023-05-21

Range: 0 - 180DEG
 Interval: 1.0DEG
 Test System:EVERFINE GO-2000B_V1 SYSTEM V2.00.471
 Humidity:65.0%
 Test Distance:4.880m [K=1.0000]
 Remarks:

Planar Illuminance Curve



C Range: 0 - 360DEG
 C Interval: 15.0DEG
 Test Speed: HIGH
 Temperature: 25.3°C
 Operators: DAMIN
 Test Date: 2023-05-21

Range: 0 - 180DEG
 Interval: 1.0DEG
 Test System: EVERFINE GO-2000B_V1 SYSTEM V2.00.471
 Humidity: 65.0%
 Test Distance: 4.880m [K=1.0000]
 Remarks:

LUMINOUS DISTRIBUTION INTENSITY DATA

Table--1

UNIT: cd

C (DEG) \ □ (DEG)	0	15	30	45	60	75	90	105	120	135	150	165	180	195	210	225	240	255	270
0	531	531	528	526	523	522	520	519	519	520	523	525	531	531	528	526	523	522	520
5	535	534	531	529	524	523	519	516	514	514	515	517	524	523	521	520	517	518	518
10	533	533	530	528	522	519	514	509	506	504	504	505	513	511	510	510	508	510	512
15	528	528	525	522	516	512	505	499	494	490	489	489	497	496	495	495	495	498	502
20	519	518	515	512	506	501	492	485	478	473	471	469	478	476	477	477	478	483	489
25	505	505	502	499	491	486	476	467	459	452	448	446	454	453	454	455	457	463	471
30	488	488	485	481	474	467	456	445	435	428	422	419	427	426	428	429	433	440	450
35	466	466	463	460	452	444	432	420	408	399	392	388	396	395	397	399	405	414	426
40	441	441	438	434	426	418	404	391	377	367	359	354	362	361	364	366	373	383	398
45	413	412	409	405	397	388	372	358	343	332	322	317	324	323	327	330	338	349	366
50	380	379	376	372	364	353	337	322	305	293	282	276	283	282	286	290	299	312	331
55	345	343	340	335	326	315	298	282	264	252	240	234	240	239	243	247	257	272	291
60	306	304	300	295	286	273	255	239	221	208	197	191	195	194	198	202	213	228	249
65	264	261	256	251	242	228	210	193	176	164	155	149	152	150	153	155	166	182	205
70	220	216	210	205	195	182	162	146	131	123	116	112	113	110	109	110	119	134	159
75	174	170	163	156	147	133	114	100	89.9	85.4	79.9	76.7	78.4	74.7	72.5	70.2	75.4	88.4	112
80	129	124	116	108	98.2	84.5	67.6	58.4	54.1	51.2	47.6	45.0	46.1	43.3	40.9	38.4	39.3	47.2	66.8
85	89.0	82.9	73.1	64.8	54.6	41.9	29.3	26.9	24.8	23.5	21.0	19.8	20.0	17.4	16.3	15.2	15.7	17.4	29.9
90	59.3	52.2	42.3	33.3	23.4	12.9	5.33	7.71	7.43	6.81	5.96	5.59	4.71	3.89	3.75	3.79	4.18	4.46	4.90
95	41.0	34.4	25.1	16.8	8.78	2.88	2.14	2.48	2.96	3.05	3.13	3.29	2.30	2.25	2.14	2.23	2.56	2.41	2.15
100	25.5	20.5	13.1	7.14	3.11	1.98	2.16	2.19	2.49	2.74	2.98	3.31	2.34	2.31	2.27	2.27	2.38	2.23	2.23
105	13.3	9.93	5.47	2.49	2.04	2.16	2.20	2.35	2.49	2.83	3.04	3.53	2.61	2.59	2.57	2.59	2.59	2.56	2.50
110	4.29	3.14	2.18	2.16	2.27	2.38	2.53	2.66	2.79	3.05	3.28	3.68	2.94	2.92	2.91	2.93	2.93	2.90	2.84
115	2.38	2.35	2.36	2.44	2.49	2.65	2.81	2.96	3.11	3.25	3.52	3.80	3.26	3.24	3.24	3.26	3.26	3.23	3.17
120	2.64	2.62	2.67	2.72	2.79	2.95	3.11	3.28	3.42	3.55	3.64	3.94	3.57	3.56	3.56	3.59	3.58	3.55	3.48
125	2.96	2.94	2.99	3.04	3.10	3.25	3.41	3.68	3.72	3.87	3.84	4.03	3.88	3.88	3.88	3.90	3.90	3.86	3.79
130	3.29	3.27	3.32	3.36	3.41	3.56	3.71	4.14	4.03	4.17	4.16	4.06	4.17	4.17	4.18	4.21	4.20	4.17	4.09
135	3.61	3.60	3.64	3.67	3.72	3.87	4.02	4.56	4.34	4.46	4.47	4.33	4.45	4.46	4.47	4.50	4.50	4.46	4.38
140	3.93	3.94	3.96	3.99	4.03	4.18	4.32	4.91	4.69	4.75	4.77	4.62	4.72	4.73	4.75	4.77	4.77	4.74	4.66
145	4.25	4.27	4.29	4.32	4.35	4.49	4.63	5.23	5.05	5.03	5.04	4.96	4.98	4.99	5.01	5.03	5.03	5.00	4.93
150	4.57	4.60	4.62	4.65	4.69	4.90	5.18	5.52	5.44	5.34	5.32	5.31	5.22	5.23	5.25	5.27	5.28	5.25	5.19
155	4.90	4.92	4.94	4.96	5.01	5.19	5.43	5.74	5.87	5.65	5.63	5.62	5.47	5.46	5.48	5.50	5.50	5.48	5.43
160	5.23	5.23	5.25	5.27	5.31	5.45	5.65	5.93	6.21	6.01	5.96	5.97	5.70	5.66	5.69	5.70	5.71	5.69	5.66
165	5.54	5.53	5.54	5.56	5.58	5.70	5.86	6.10	6.37	6.48	6.31	6.31	5.92	5.85	5.88	5.89	5.90	5.88	5.88
170	5.81	5.80	5.80	5.82	5.83	5.92	6.03	6.24	6.47	6.64	6.81	6.66	6.08	6.02	6.04	6.04	6.06	6.04	6.06
175	6.05	6.03	6.03	6.04	6.03	6.11	6.17	6.34	6.52	6.66	6.91	7.10	6.19	6.14	6.16	6.14	6.16	6.16	6.21
180	6.21	6.18	6.19	6.19	6.19	6.23	6.26	6.36	6.54	6.62	6.88	7.06	6.24	6.19	6.18	6.17	6.19	6.21	6.28

C Range: 0 - 360DEG
 C Interval: 15.0DEG
 Test Speed: HIGH
 Temperature: 25.3°C
 Operators: DAMIN
 Test Date: 2023-05-21

□ Range: 0 - 180DEG
 □ Interval: 1.0DEG
 Test System: EVERFINE GO-2000B_V1 SYSTEM V2.00.471
 Humidity: 65.0%
 Test Distance: 4.880m [K=1.0000]
 Remarks:

LUMINOUS DISTRIBUTION INTENSITY DATA

Table--2

UNIT: cd

C (DEG) \ □ (DEG)	285	300	315	330	345														
0	519	519	520	523	525														
5	518	520	522	526	529														
10	513	517	521	526	528														
15	505	511	515	521	523														
20	493	501	506	512	513														
25	478	487	493	499	499														
30	458	469	476	481	482														
35	436	447	454	460	460														
40	409	422	429	436	434														
45	379	392	401	408	403														
50	345	360	370	376	370														
55	308	324	335	339	333														
60	268	285	296	299	265														
65	225	243	253	257	209														
70	179	198	207	215	203														
75	133	149	163	143	162														
80	86.7	103	106	110	123														
85	44.6	51.6	70.2	84.5	81.9														
90	19.6	35.6	50.5	58.3	61.8														
95	7.65	21.2	35.0	43.0	43.3														
100	2.70	9.95	20.5	26.9	29.7														
105	2.40	3.32	9.15	15.2	16.3														
110	2.70	2.67	3.26	5.71	7.27														
115	3.02	2.90	2.99	2.96	3.11														
120	3.32	3.21	3.15	3.15	3.21														
125	3.62	3.51	3.45	3.45	3.49														
130	3.92	3.80	3.75	3.75	3.81														
135	4.22	4.09	4.06	4.05	4.14														
140	4.51	4.39	4.36	4.35	4.46														
145	4.79	4.68	4.66	4.66	4.83														
150	5.07	4.97	5.02	5.04	5.20														
155	5.35	5.29	5.36	5.38	5.53														
160	5.61	5.58	5.69	5.71	5.89														
165	5.86	5.85	6.01	6.04	6.27														
170	6.07	6.11	6.29	6.34	6.63														
175	6.26	6.33	6.50	6.62	6.92														
180	6.39	6.50	6.69	6.79	7.16														

C Range: 0 - 360DEG
 C Interval: 15.0DEG
 Test Speed: HIGH
 Temperature:25.3°C
 Operators:DAMIN
 Test Date:2023-05-21

□ Range: 0 - 180DEG
 □ Interval: 1.0DEG
 Test System:EVERFINE GO-2000B_V1 SYSTEM V2.00.471
 Humidity:65.0%
 Test Distance:4.880m [K=1.0000]
 Remarks: