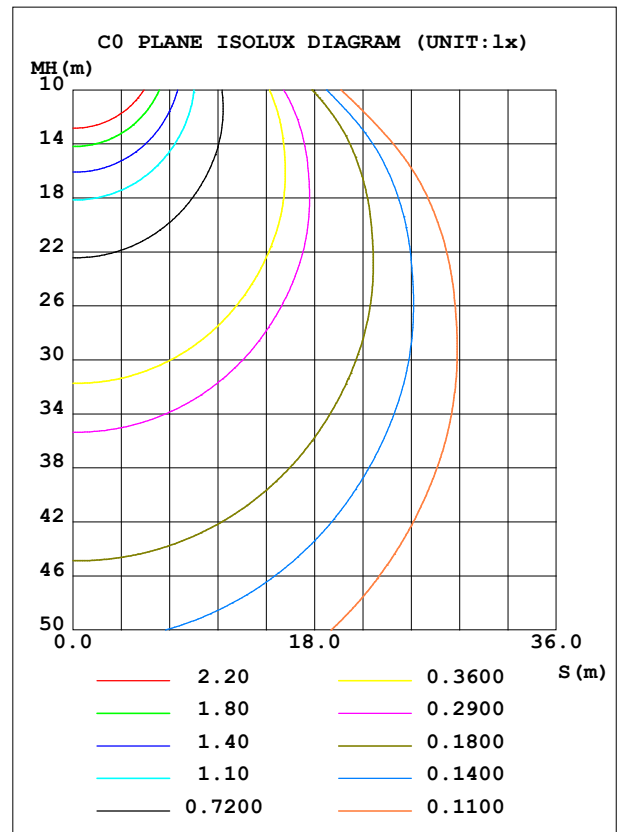
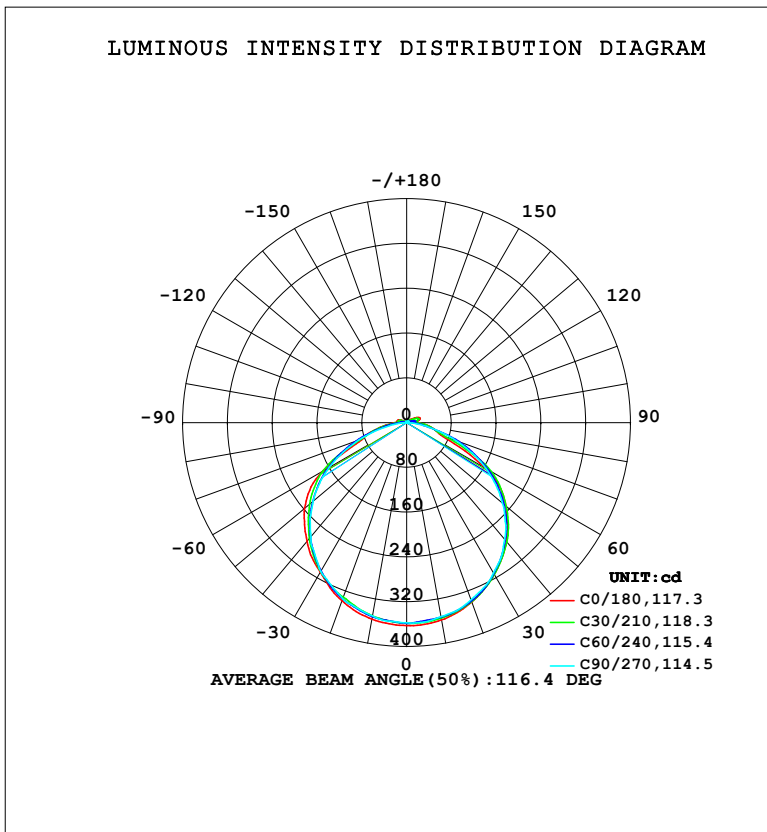


LUMINAIRE PHOTOMETRIC TEST REPORT

NAME: LED Strip	TYPE: Indoor lighting	WEIGHT: 20g
SPEC.: LED	DIM.: 1000*10*1.2MM	SERIAL No.: 20230814043
MFR.: EVERFINE	SUR.: 1000*10MM	Shielding Angle:

DATA OF LAMP		PHOTOMETRIC DATA			
MODEL: GO-240B-24 (WCP) -UR-S-DTW 1M		Eff: 76.49 lm/W			
		Imax (cd)	363.2	S/MH (C0/180)	1.27
NOMINAL POWER (W)	14.3914	LOR (%)	100.0	S/MH (C90/270)	1.27
RATED VOLTAGE (V)	DC 24V	TOTAL FLUX (lm)	1100.8	η UP, DN (C0-180)	2.2, 48.1
NOMINAL FLUX (lm)	1100.79	CIE CLASS	DIRECT	η UP, DN (C180-360)	2.1, 47.6
LAMPS INSIDE	1	η up (%)	4.3	CIBSE SHR NOM	1.25
TEST VOLTAGE (V)	DC 24V	η down (%)	95.7	CIBSE SHR MAX	1.35



C Range: 0 - 360DEG
 C Interval: 15.0DEG
 Test Speed: HIGH
 Temperature: 25.3°C
 Operators: DAMIN
 Test Date: 2023-08-15

γ Range: 0 - 180DEG
 γ Interval: 1.0DEG
 Test System: EVERFINE GO-2000B_V1 SYSTEM V2.00.471
 Humidity: 65.0%
 Test Distance: 4.880m [K=1.0000]
 Remarks:

ZONAL FLUX DIAGRAM

ZONAL FLUX DIAGRAM:

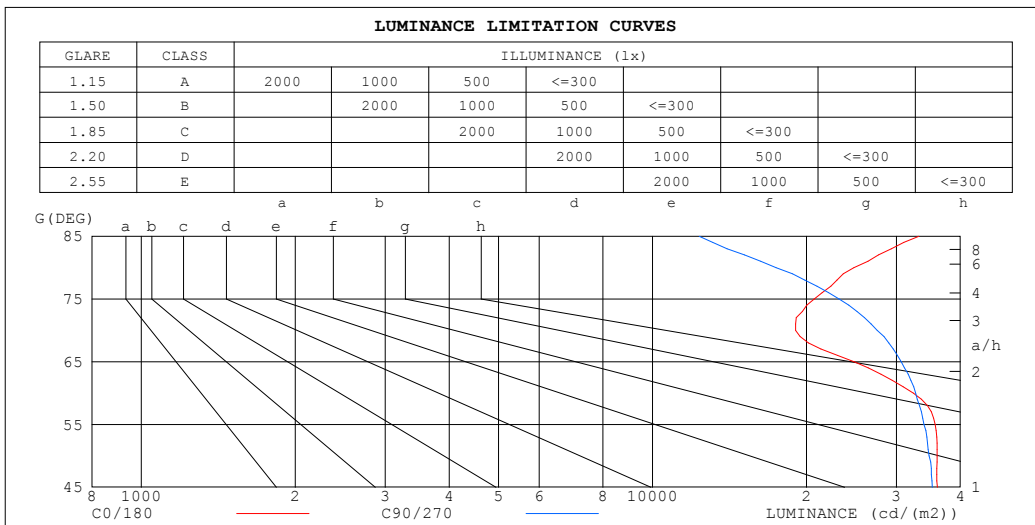
γ	C0	C45	C90	C135	C180	C225	C270	C315	γ	Φ zone	Φ total	%lum,lamp
10	358.0	354.0	352.1	356.4	356.6	348.8	351.0	353.2	0- 10	34.06	34.06	3.09,3.09
20	340.9	337.9	336.8	338.7	338.5	333.4	334.6	336.2	10- 20	98.07	132.1	12,12
30	312.8	312.9	310.2	310.9	308.6	305.0	307.2	308.9	20- 30	149.9	282.0	25.6,25.6
40	277.6	277.4	272.8	274.0	277.1	267.7	266.7	271.7	30- 40	183.3	465.3	42.3,42.3
50	231.7	232.4	223.4	227.3	238.0	221.4	218.5	225.6	40- 50	193.8	659.1	59.9,59.9
60	161.9	173.3	163.7	170.6	173.1	165.9	159.8	168.1	50- 60	178.0	837.2	76.1,76.1
70	65.17	91.65	94.09	92.54	82.40	93.28	90.14	87.49	60- 70	125.1	962.3	87.4,87.4
80	43.00	39.99	30.31	42.80	47.63	42.05	28.97	38.49	70- 80	64.21	1027	93.3,93.3
90	19.96	17.27	2.109	16.17	21.23	15.40	2.349	15.87	80- 90	26.84	1053	95.7,95.7
100	21.09	16.52	1.186	14.06	17.09	13.58	1.298	16.21	90-100	13.34	1067	96.9,96.9
110	25.20	17.83	1.599	7.216	14.46	8.459	1.737	18.34	100-110	13.22	1080	98.1,98.1
120	17.46	7.886	2.061	2.239	6.066	2.580	2.212	8.012	110-120	8.695	1089	98.9,98.9
130	8.529	4.236	2.503	2.528	2.936	2.854	2.654	3.570	120-130	4.219	1093	99.3,99.3
140	4.624	3.428	2.938	2.907	3.150	3.178	3.074	3.148	130-140	2.688	1096	99.5,99.5
150	3.652	3.389	3.358	3.332	3.490	3.425	3.466	3.452	140-150	2.115	1098	99.7,99.7
160	3.756	3.739	3.733	3.731	3.842	3.772	3.805	3.797	150-160	1.663	1099	99.9,99.9
170	4.064	4.033	4.039	4.056	4.112	4.058	4.082	4.073	160-170	1.107	1100	100,100
180	4.245	4.212	4.225	4.234	4.244	4.225	4.225	4.235	170-180	0.3946	1101	100,100
DEG	LUMINOUS INTENSITY:cd									UNIT:lm		

C Range: 0 - 360DEG
 C Interval: 15.0DEG
 Test Speed: HIGH
 Temperature:25.3°C
 Operators:DAMIN
 Test Date:2023-08-15

γ Range: 0 - 180DEG
 γ Interval: 1.0DEG
 Test System:EVERFINE GO-2000B_V1 SYSTEM V2.00.471
 Humidity:65.0%
 Test Distance:4.880m [K=1.0000]
 Remarks:

LUMINANCE LIMITATION CURVES

NAME: LED Strip	TYPE: Indoor lighting	WEIGHT: 20g
SPEC.: LED	DIM.: 1000*10*1.2MM	SERIAL No.: 20230814043
MFR.: EVERFINE	SUR.: 1000*10MM	Shielding Angle:



LUMINANCE cd/ (m2)		
G (DEG)	C0/180	C90/270
85	33172	12337
80	24764	17456
75	20715	23185
70	19054	27510
65	24809	30637
60	32383	32730
55	35706	33943
50	36043	34752
45	36058	35280

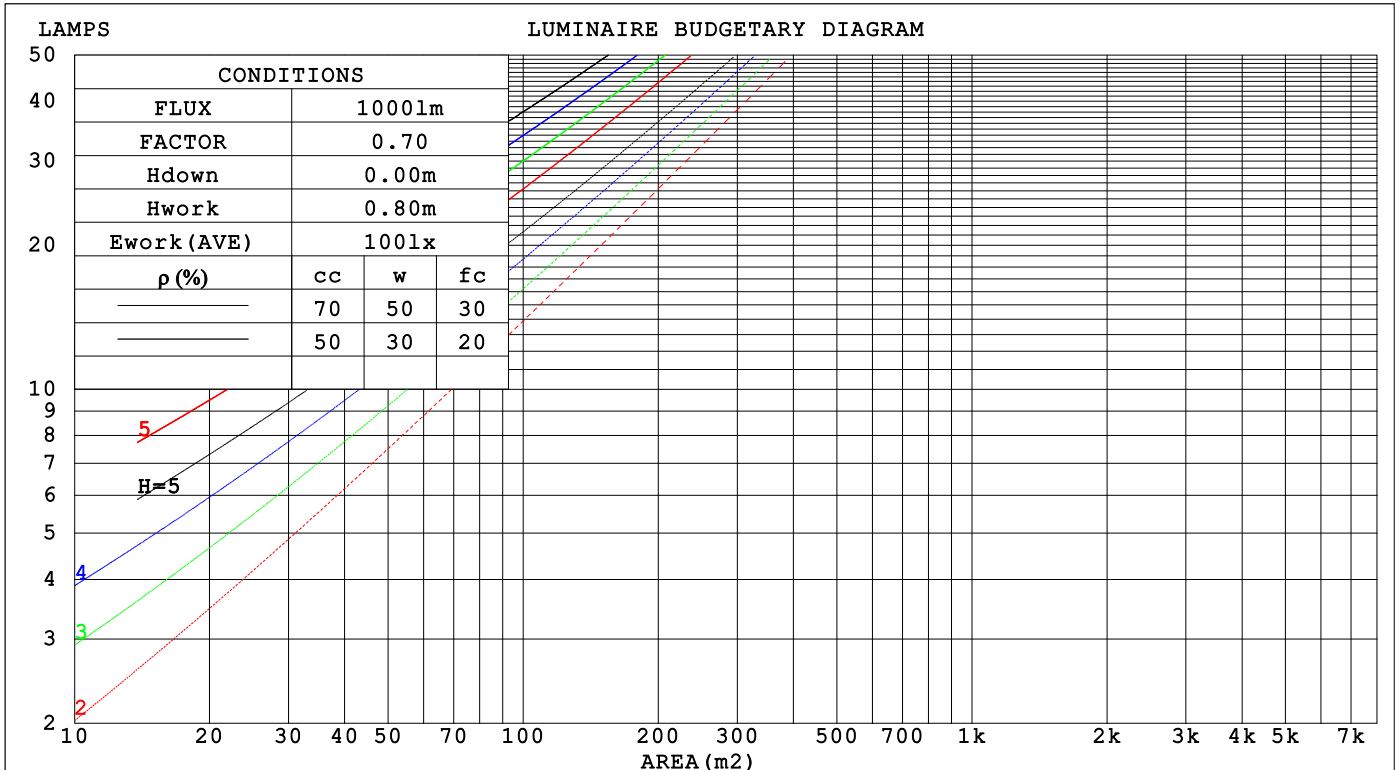
C Range: 0 - 360DEG
 C Interval: 15.0DEG
 Test Speed: HIGH
 Temperature: 25.3°C
 Operators: DAMIN
 Test Date: 2023-08-15

γ Range: 0 - 180DEG
 γ Interval: 1.0DEG
 Test System: EVERFINE GO-2000B_V1 SYSTEM V2.00.471
 Humidity: 65.0%
 Test Distance: 4.880m [K=1.0000]
 Remarks:

CU AND LUMINAIRE BUDGETARY ESTIMATE DIAGRAM

NAME: LED Strip	TYPE: Indoor lighting	WEIGHT: 20g
SPEC.: LED	DIM.: 1000*10*1.2MM	SERIAL No.: 20230814043
MFR.: EVERFINE	SUR.: 1000*10MM	Shielding Angle:

ρcc	80%			70%			50%			30%			10%			0
	50%	30%	10%	50%	30%	10%	50%	30%	10%	50%	30%	10%	50%	30%	10%	0
ρw																
ρfc	20%			20%			20%			20%			20%			0
RCR	RCR:Room Cavity Ratio															
	Coefficients of Utilization(CU)															
0.0	1.18	1.18	1.18	1.15	1.15	1.15	1.09	1.09	1.09	1.03	1.03	1.03	.98	.98	.98	.96
1.0	1.03	.99	.95	1.00	.96	.93	.95	.92	.89	.90	.88	.85	.86	.84	.82	.80
2.0	.90	.83	.77	.87	.81	.76	.83	.78	.73	.79	.75	.71	.76	.72	.69	.66
3.0	.79	.71	.64	.77	.69	.63	.73	.67	.61	.70	.64	.60	.67	.62	.58	.56
4.0	.70	.61	.54	.68	.60	.54	.65	.58	.52	.62	.56	.51	.59	.54	.50	.48
5.0	.62	.53	.46	.61	.52	.46	.58	.51	.45	.56	.49	.44	.53	.48	.43	.41
6.0	.56	.47	.40	.55	.46	.40	.52	.45	.39	.50	.44	.39	.48	.43	.38	.36
7.0	.51	.42	.36	.50	.41	.35	.48	.40	.35	.46	.39	.34	.44	.38	.34	.32
8.0	.46	.38	.32	.45	.37	.31	.43	.36	.31	.42	.35	.31	.40	.35	.30	.28
9.0	.42	.34	.28	.41	.34	.28	.40	.33	.28	.39	.32	.28	.37	.31	.27	.25
10.0	.39	.31	.26	.38	.31	.26	.37	.30	.25	.36	.29	.25	.35	.29	.25	.23



C Range: 0 - 360DEG
 C Interval: 15.0DEG
 Test Speed: HIGH
 Temperature: 25.3°C
 Operators: DAMIN
 Test Date: 2023-08-15

γ Range: 0 - 180DEG
 γ Interval: 1.0DEG
 Test System: EVERFINE GO-2000B_V1 SYSTEM V2.00.471
 Humidity: 65.0%
 Test Distance: 4.880m [K=1.0000]
 Remarks:

WEC AND CCEC

NAME: LED Strip	TYPE: Indoor lighting	WEIGHT: 20g
SPEC.: LED	DIM.: 1000*10*1.2MM	SERIAL No.: 20230814043
MFR.: EVERFINE	SUR.: 1000*10MM	Shielding Angle:

ρ_{cc}	80%			70%			50%			30%			10%			0
ρ_w	50%	30%	10%	50%	30%	10%	50%	30%	10%	50%	30%	10%	50%	30%	10%	0
ρ_{fc}	20%			20%			20%			20%			20%			0
RCR	RCR:Room Cavity Ratio						Wall Exitance Coefficients(WEC)									
0.0																
1.0	.310	.176	.056	.302	.172	.055	.286	.164	.052	.271	.157	.050	.258	.150	.048	
2.0	.290	.159	.049	.282	.155	.048	.268	.149	.046	.255	.143	.045	.243	.138	.043	
3.0	.268	.143	.043	.261	.140	.042	.249	.135	.041	.237	.130	.040	.227	.125	.039	
4.0	.247	.128	.038	.241	.126	.037	.230	.122	.036	.220	.118	.036	.210	.114	.035	
5.0	.229	.117	.034	.223	.115	.033	.214	.111	.033	.204	.108	.032	.196	.105	.031	
6.0	.212	.106	.030	.208	.105	.030	.199	.102	.030	.190	.099	.029	.182	.096	.029	
7.0	.198	.098	.028	.193	.096	.027	.185	.094	.027	.178	.091	.027	.171	.089	.026	
8.0	.185	.090	.025	.181	.089	.025	.174	.087	.025	.167	.084	.024	.160	.082	.024	
9.0	.173	.084	.023	.170	.083	.023	.163	.081	.023	.157	.079	.022	.151	.077	.022	
10.0	.163	.078	.022	.160	.077	.022	.154	.075	.021	.148	.073	.021	.142	.072	.021	

ρ_{cc}	80%			70%			50%			30%			10%			0
ρ_w	50%	30%	10%	50%	30%	10%	50%	30%	10%	50%	30%	10%	50%	30%	10%	0
ρ_{fc}	20%			20%			20%			20%			20%			0
RCR	RCR:Room Cavity Ratio						Ceiling Cavity Exitance Coefficients(CCEC)									
0.0	.223	.223	.223	.191	.191	.191	.130	.130	.130	.075	.075	.075	.024	.024	.024	
1.0	.213	.189	.167	.183	.162	.144	.125	.112	.100	.072	.065	.058	.023	.021	.019	
2.0	.205	.165	.132	.176	.142	.114	.120	.098	.079	.069	.057	.047	.022	.019	.015	
3.0	.198	.148	.108	.169	.127	.094	.116	.089	.066	.067	.052	.039	.022	.017	.013	
4.0	.190	.135	.092	.163	.116	.080	.112	.081	.056	.065	.047	.033	.021	.015	.011	
5.0	.183	.124	.081	.157	.108	.071	.108	.075	.050	.063	.044	.030	.020	.014	.010	
6.0	.176	.116	.073	.151	.100	.064	.104	.070	.045	.060	.041	.027	.020	.014	.009	
7.0	.169	.109	.067	.145	.095	.059	.100	.066	.042	.058	.039	.025	.019	.013	.008	
8.0	.163	.103	.063	.140	.090	.055	.097	.063	.039	.056	.037	.023	.018	.012	.008	
9.0	.157	.099	.059	.135	.086	.052	.093	.060	.037	.054	.036	.022	.018	.012	.007	
10.0	.151	.094	.057	.130	.082	.049	.090	.058	.035	.053	.034	.021	.017	.011	.007	

C Range: 0 - 360DEG
 C Interval: 15.0DEG
 Test Speed: HIGH
 Temperature:25.3°C
 Operators:DAMIN
 Test Date:2023-08-15

γ Range: 0 - 180DEG
 γ Interval: 1.0DEG
 Test System:EVERFINE GO-2000B_V1 SYSTEM V2.00.471
 Humidity:65.0%
 Test Distance:4.880m [K=1.0000]
 Remarks:

UGR(Unified Glare Rating) Table

NAME: LED Strip		TYPE: Indoor lighting					WEIGHT: 20g				
SPEC.: LED		DIM.: 1000*10*1.2MM					SERIAL No.: 20230814043				
MFR.: EVERFINE		SUR.: 1000*10MM					Shielding Angle:				
ceiling/cavity		0.7	0.7	0.5	0.5	0.3	0.7	0.7	0.5	0.5	0.3
walls		0.5	0.3	0.5	0.3	0.3	0.5	0.3	0.5	0.3	0.3
working plane		0.2	0.2	0.2	0.2	0.2	0.2	0.2	0.2	0.2	0.2
Room dimensions		Viewed crosswise					Viewed endwise				
x = 2H y = 2H		24.8	26.2	25.1	26.5	26.8	24.7	26.1	25.0	26.4	26.7
	3H	25.5	26.8	25.9	27.1	27.5	26.0	27.3	26.3	27.6	28.0
	4H	25.8	27.1	26.2	27.4	27.8	26.4	27.7	26.8	28.0	28.4
	6H	26.3	27.5	26.7	27.8	28.2	26.7	27.9	27.1	28.2	28.6
	8H	26.5	27.7	26.9	28.1	28.4	26.7	27.9	27.1	28.2	28.6
	12H	26.8	27.9	27.2	28.3	28.7	26.7	27.8	27.1	28.2	28.6
	4H 2H	25.3	26.6	25.7	26.9	27.3	25.3	26.5	25.6	26.9	27.2
	3H	26.2	27.3	26.6	27.7	28.1	26.8	27.9	27.2	28.2	28.6
	4H	26.6	27.7	27.1	28.1	28.5	27.3	28.3	27.7	28.7	29.1
	6H	27.2	28.1	27.7	28.6	29.0	27.6	28.5	28.1	28.9	29.4
	8H	27.6	28.4	28.1	28.9	29.4	27.7	28.5	28.2	29.0	29.4
	12H	28.0	28.7	28.5	29.2	29.7	27.7	28.5	28.2	28.9	29.4
	8H 4H	26.8	27.7	27.3	28.1	28.6	27.4	28.2	27.9	28.7	29.2
	6H	27.6	28.3	28.1	28.8	29.3	27.8	28.5	28.4	29.0	29.5
	8H	28.1	28.8	28.7	29.3	29.8	28.0	28.6	28.5	29.1	29.7
	12H	28.7	29.2	29.2	29.7	30.3	28.1	28.6	28.6	29.2	29.7
	12H 4H	26.8	27.6	27.3	28.1	28.6	27.4	28.2	27.9	28.6	29.1
	6H	27.7	28.3	28.2	28.8	29.4	27.9	28.5	28.4	29.0	29.6
	8H	28.3	28.8	28.8	29.3	29.9	28.1	28.6	28.7	29.2	29.7
Variations with the observer position at spacings(CIE Pub.117):											
S = 1.0H		+ 0.2 / - 0.2					+ 0.2 / - 0.2				
1.5H		+ 0.4 / - 0.5					+ 0.2 / - 0.3				
2.0H		+ 0.3 / - 0.6					+ 0.2 / - 0.4				

CIE Pub.117, 1101 lm Total Lamp Luminous Flux Correct (8log(F/F0) = 0.3)
 Area: 0.01 m2

C Range: 0 - 360DEG
 C Interval: 15.0DEG
 Test Speed: HIGH
 Temperature:25.3°C
 Operators:DAMIN
 Test Date:2023-08-15

γ Range: 0 - 180DEG
 γ Interval: 1.0DEG
 Test System:EVERFINE GO-2000B_V1 SYSTEM V2.00.471
 Humidity:65.0%
 Test Distance:4.880m [K=1.0000]
 Remarks:

UTILIZATION FACTORS TABLE

NAME: LED Strip	TYPE: Indoor lighting	WEIGHT: 20g
SPEC.: LED	DIM.: 1000*10*1.2MM	SERIAL No.: 20230814043
MFR.: EVERFINE	SUR.: 1000*10MM	Shielding Angle:

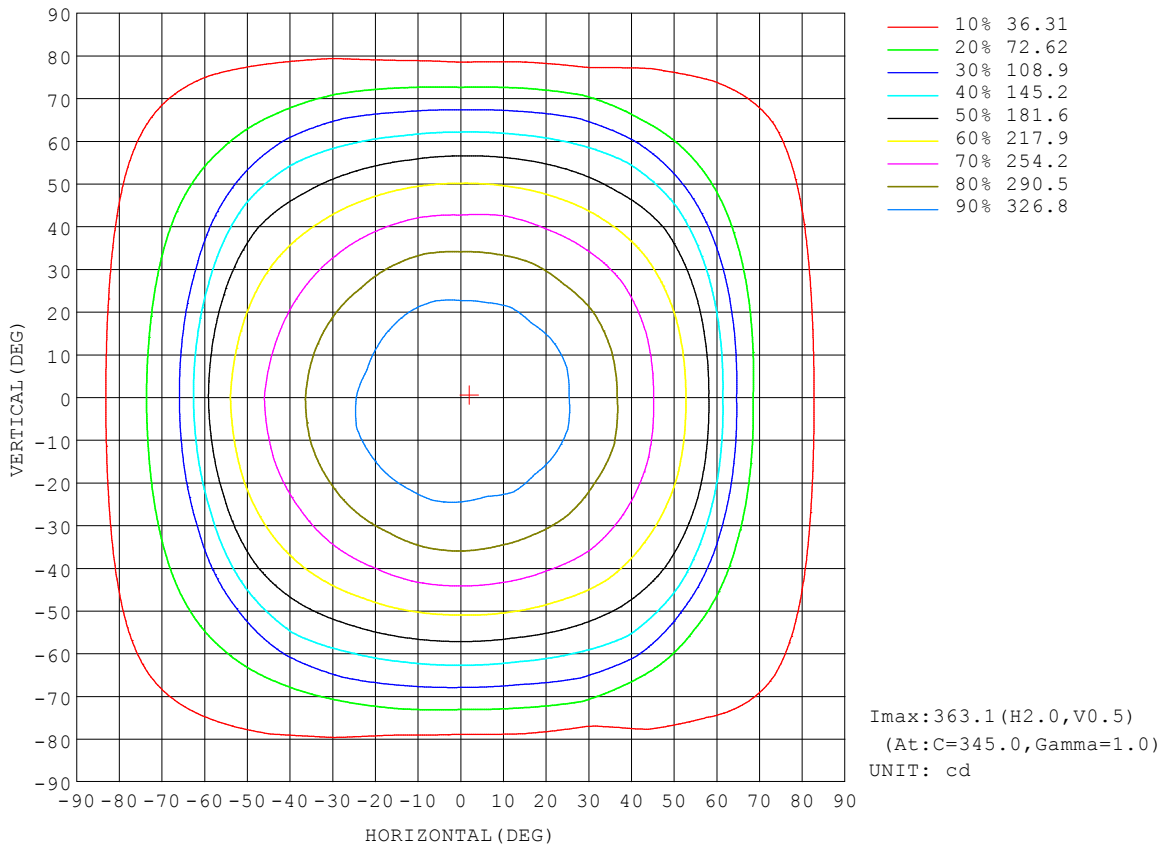
REFLECTANCE										
Ceiling	0.8	0.8	0.8	0.7	0.7	0.7	0.5	0.5	0.5	0
Walls	0.7	0.5	0.3	0.7	0.5	0.3	0.7	0.5	0.3	0
Working plane	0.2	0.2	0.2	0.2	0.2	0.2	0.2	0.2	0.2	0
ROOM INDEX	UTILIZATION FACTORS (PERCENT) $k(RI) \times RCR = 5$									
k = 0.60	56	44	37	55	44	37	54	43	37	30
0.80	66	54	47	65	54	46	63	53	46	39
1.00	74	63	56	73	62	55	70	64	55	47
1.25	82	71	64	80	70	63	77	68	62	54
1.50	87	76	69	85	75	69	81	73	67	59
2.00	93	85	78	91	83	77	87	81	75	67
2.50	97	89	83	95	88	82	91	85	80	71
3.00	101	94	88	98	92	87	94	88	84	75
4.00	105	99	94	102	97	92	97	93	89	79
5.00	107	102	98	104	100	96	99	96	92	82
ROOM INDEX	UF(total)									Direct
According to DIN EN 13032-2 2004			Suspended				SHRNOM = 1.25			

C Range: 0 - 360DEG
 C Interval: 15.0DEG
 Test Speed: HIGH
 Temperature: 25.3°C
 Operators: DAMIN
 Test Date: 2023-08-15

γ Range: 0 - 180DEG
 γ Interval: 1.0DEG
 Test System: EVERFINE GO-2000B_V1 SYSTEM V2.00.471
 Humidity: 65.0%
 Test Distance: 4.880m [K=1.0000]
 Remarks:

ISOCANDELA DIAGRAM

NAME: LED Strip	TYPE: Indoor lighting	WEIGHT: 20g
SPEC.: LED	DIM.: 1000*10*1.2MM	SERIAL No.: 20230814043
MFR.: EVERFINE	SUR.: 1000*10MM	Shielding Angle:



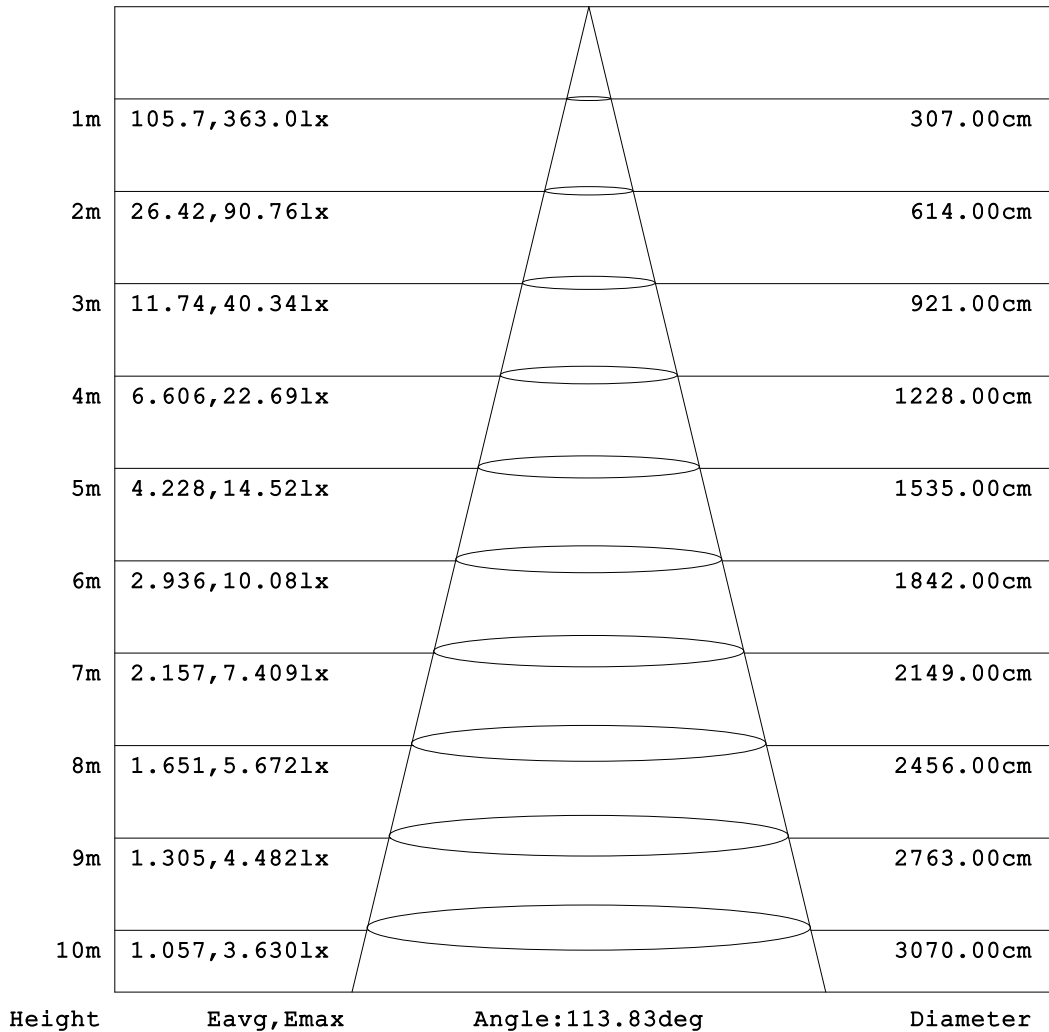
C Range: 0 - 360DEG
 C Interval: 15.0DEG
 Test Speed: HIGH
 Temperature: 25.3°C
 Operators: DAMIN
 Test Date: 2023-08-15

γ Range: 0 - 180DEG
 γ Interval: 1.0DEG
 Test System: EVERFINE GO-2000B_V1 SYSTEM V2.00.471
 Humidity: 65.0%
 Test Distance: 4.880m [K=1.0000]
 Remarks:

AAI Figure

NAME: LED Strip	TYPE: Indoor lighting	WEIGHT: 20g
SPEC.: LED	DIM.: 1000*10*1.2MM	SERIAL No.: 20230814043
MFR.: EVERFINE	SUR.: 1000*10MM	Shielding Angle:

Flux out:787.3 lm



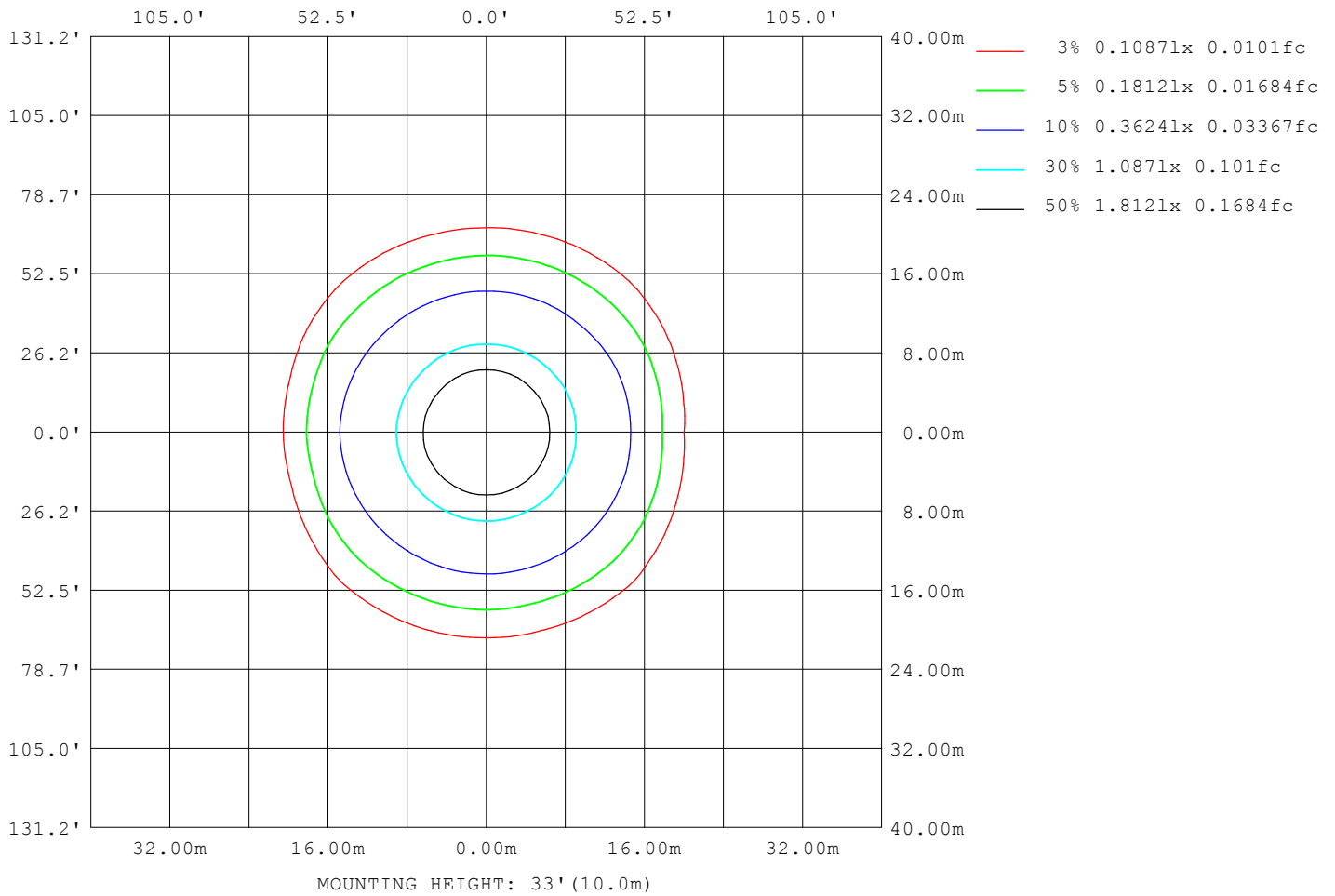
Note: The Curves indicate the illuminated area and the average illumination when the luminaire is at different distance.

C Range: 0 - 360DEG
 C Interval: 15.0DEG
 Test Speed: HIGH
 Temperature: 25.3°C
 Operators: DAMIN
 Test Date: 2023-08-15

γ Range: 0 - 180DEG
 γ Interval: 1.0DEG
 Test System: EVERFINE GO-2000B_V1 SYSTEM V2.00.471
 Humidity: 65.0%
 Test Distance: 4.880m [K=1.0000]
 Remarks:

ISOLUX DIAGRAM

NAME: LED Strip	TYPE: Indoor lighting	WEIGHT: 20g
SPEC.: LED	DIM.: 1000*10*1.2MM	SERIAL No.: 20230814043
MFR.: EVERFINE	SUR.: 1000*10MM	Shielding Angle:



C Range: 0 - 360DEG
 C Interval: 15.0DEG
 Test Speed: HIGH
 Temperature: 25.3°C
 Operators: DAMIN
 Test Date: 2023-08-15

γ Range: 0 - 180DEG
 γ Interval: 1.0DEG
 Test System: EVERFINE GO-2000B_V1 SYSTEM V2.00.471
 Humidity: 65.0%
 Test Distance: 4.880m [K=1.0000]
 Remarks:

LED Avg.L Report

NAME: LED Strip	TYPE: Indoor lighting	WEIGHT: 20g
SPEC.: LED	DIM.: 1000*10*1.2MM	SERIAL No.: 20230814043
MFR.: EVERFINE	SUR.: 1000*10MM	Shielding Angle:

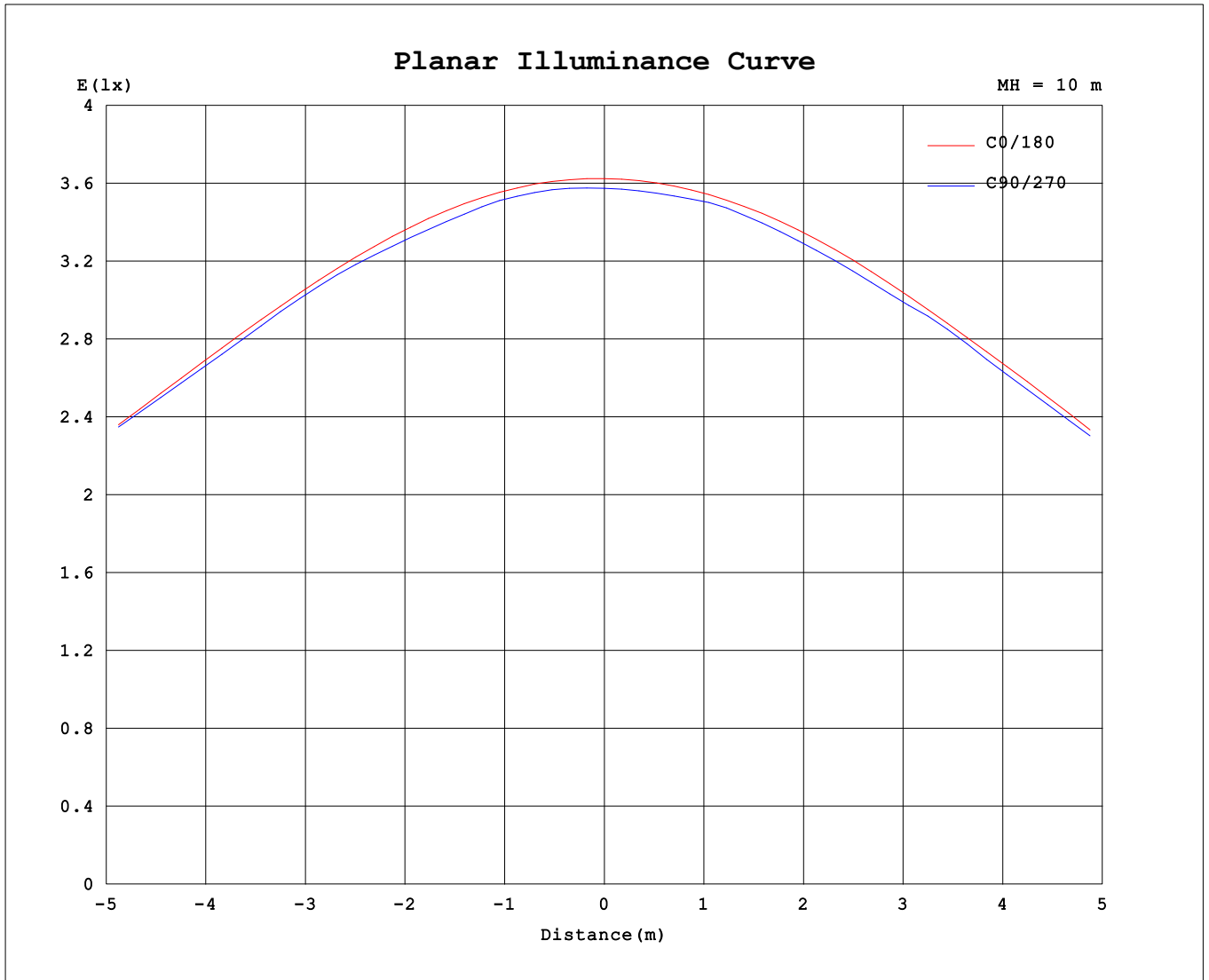
AvgL	cd/m2
L_0~180 (65) av	26380
L_0~180 (75) av	23344
L_0~180 (85) av	34267
L_90~270 (65) av	30114
L_90~270 (75) av	22571
L_90~270 (85) av	12494
L_45 (65) av	32038
L_45 (75) av	22640
L_45 (85) av	29572

Standard: GB/T 29293-2012

C Range: 0 - 360DEG
 C Interval: 15.0DEG
 Test Speed: HIGH
 Temperature:25.3°C
 Operators:DAMIN
 Test Date:2023-08-15

γ Range: 0 - 180DEG
 γ Interval: 1.0DEG
 Test System:EVERFINE GO-2000B_V1 SYSTEM V2.00.471
 Humidity:65.0%
 Test Distance:4.880m [K=1.0000]
 Remarks:

Planar Illuminance Curve



C Range: 0 - 360DEG
 C Interval: 15.0DEG
 Test Speed: HIGH
 Temperature: 25.3°C
 Operators: DAMIN
 Test Date: 2023-08-15

γ Range: 0 - 180DEG
 γ Interval: 1.0DEG
 Test System: EVERFINE GO-2000B_V1 SYSTEM V2.00.471
 Humidity: 65.0%
 Test Distance: 4.880m [K=1.0000]
 Remarks:

LUMINOUS DISTRIBUTION INTENSITY DATA

NAME: LED Strip	TYPE: Indoor lighting	WEIGHT: 20g
SPEC.: LED	DIM.: 1000*10*1.2MM	SERIAL No.: 20230814043
MFR.: EVERFINE	SUR.: 1000*10MM	Shielding Angle:

Table--1

UNIT: cd

C (DEG) γ (DEG)	0	15	30	45	60	75	90	105	120	135	150	165	180	195	210	225	240	255	270
0	362	361	358	357	359	358	358	358	359	360	362	363	362	361	358	357	359	358	358
5	362	360	358	357	355	356	358	359	359	359	361	363	361	359	356	354	355	356	356
10	358	358	355	354	353	352	352	353	355	356	358	358	357	354	351	349	352	352	351
15	351	351	349	347	348	345	347	348	348	349	350	352	349	346	342	343	344	343	343
20	341	342	340	338	339	336	337	339	338	339	339	341	339	334	332	333	335	335	335
25	328	330	328	326	327	324	326	327	326	326	326	328	325	321	321	321	322	322	320
30	313	315	313	313	312	311	310	312	310	311	311	313	309	308	307	305	306	307	307
35	296	299	296	297	294	293	294	294	292	293	294	296	295	293	290	287	288	289	287
40	278	281	279	277	274	275	273	274	272	274	275	277	277	274	271	268	267	268	267
45	255	258	257	257	252	250	249	250	249	251	253	257	258	253	248	245	244	244	244
50	232	234	232	232	227	225	223	224	224	227	231	236	238	232	226	221	219	219	218
55	205	207	206	204	199	196	195	195	196	201	204	209	212	207	201	195	192	190	190
60	162	170	174	173	168	164	164	164	165	171	172	169	173	172	173	166	162	159	160
65	105	113	126	139	134	130	129	130	133	135	125	116	118	120	130	134	130	126	125
70	65.2	67.4	75.3	91.6	100	95.0	94.1	96.4	98.1	92.5	84.4	83.8	82.4	82.0	86.2	93.3	96.9	92.2	90.1
75	53.6	53.5	53.6	52.9	60.4	61.1	60.0	62.7	62.4	64.7	65.5	65.5	67.2	66.2	65.3	63.4	62.5	60.1	56.8
80	43.0	42.6	41.4	40.0	31.9	31.8	30.3	33.4	40.6	42.8	45.8	47.4	47.6	46.7	44.9	42.0	39.1	32.5	29.0
85	28.9	30.2	30.0	26.6	20.5	13.7	10.8	15.7	22.2	25.4	27.3	29.4	30.8	29.8	27.8	24.7	21.8	14.8	11.0
90	20.0	20.0	18.9	17.3	11.7	5.97	2.11	7.25	12.0	16.2	19.2	21.4	21.2	20.8	18.9	15.4	11.8	6.58	2.35
95	17.8	17.4	16.3	14.2	11.6	6.12	1.07	6.06	11.1	14.3	16.3	18.0	17.6	17.4	16.1	13.8	10.8	5.55	1.18
100	21.1	20.3	18.6	16.5	14.6	4.95	1.19	1.62	10.9	14.1	15.9	17.4	17.1	16.7	15.4	13.6	10.8	2.20	1.30
105	24.2	23.2	21.7	19.6	13.6	2.86	1.38	1.48	5.02	12.5	14.7	16.6	16.6	15.9	14.4	12.5	6.81	1.69	1.51
110	25.2	24.5	22.2	17.8	8.25	2.30	1.60	1.64	1.92	7.22	12.7	14.1	14.5	13.7	12.9	8.46	2.45	1.85	1.74
115	22.6	21.7	18.7	12.2	5.08	2.09	1.83	1.83	1.93	2.82	6.35	10.1	12.0	10.8	7.61	3.53	2.34	1.99	1.98
120	17.5	16.4	12.6	7.89	3.73	2.15	2.06	2.05	2.07	2.24	3.01	4.79	6.07	5.27	3.63	2.58	2.44	2.20	2.21
125	11.9	11.2	8.70	5.57	3.30	2.35	2.29	2.28	2.28	2.34	2.49	2.78	3.24	2.96	2.76	2.72	2.56	2.42	2.44
130	8.53	7.98	6.19	4.24	2.98	2.55	2.50	2.49	2.49	2.53	2.58	2.68	2.94	2.89	2.85	2.85	2.70	2.63	2.65
135	5.93	5.61	4.66	3.85	2.85	2.75	2.72	2.71	2.69	2.72	2.75	2.81	3.02	2.99	2.99	2.98	2.84	2.84	2.87
140	4.62	4.52	4.21	3.43	2.98	2.95	2.94	2.93	2.90	2.91	2.93	2.98	3.15	3.12	3.16	3.18	3.03	3.05	3.07
145	4.20	4.13	3.71	3.25	3.17	3.16	3.15	3.15	3.12	3.11	3.12	3.17	3.32	3.29	3.31	3.32	3.23	3.26	3.27
150	3.65	3.61	3.46	3.39	3.37	3.36	3.36	3.36	3.34	3.33	3.33	3.38	3.49	3.48	3.51	3.42	3.44	3.46	3.47
155	3.57	3.60	3.58	3.57	3.55	3.55	3.55	3.56	3.54	3.54	3.53	3.57	3.67	3.66	3.67	3.61	3.62	3.64	3.64
160	3.76	3.77	3.75	3.74	3.72	3.73	3.73	3.74	3.73	3.73	3.72	3.74	3.84	3.79	3.82	3.77	3.79	3.80	3.81
165	3.93	3.93	3.90	3.89	3.88	3.89	3.89	3.91	3.90	3.90	3.90	3.91	3.99	3.93	3.93	3.92	3.94	3.95	3.95
170	4.06	4.06	4.03	4.03	4.03	4.04	4.04	4.05	4.05	4.06	4.05	4.07	4.11	4.05	4.05	4.06	4.08	4.07	4.08
175	4.17	4.17	4.14	4.15	4.14	4.16	4.15	4.17	4.16	4.18	4.17	4.20	4.20	4.15	4.16	4.16	4.18	4.17	4.18
180	4.24	4.23	4.21	4.21	4.22	4.23	4.23	4.23	4.23	4.23	4.25	4.27	4.24	4.22	4.22	4.23	4.23	4.23	4.23

C Range: 0 - 360DEG
 C Interval: 15.0DEG
 Test Speed: HIGH
 Temperature:25.3°C
 Operators:DAMIN
 Test Date:2023-08-15

γ Range: 0 - 180DEG
 γ Interval: 1.0DEG
 Test System:EVERFINE GO-2000B_V1 SYSTEM V2.00.471
 Humidity:65.0%
 Test Distance:4.880m [K=1.0000]
 Remarks:

LUMINOUS DISTRIBUTION INTENSITY DATA

NAME: LED Strip	TYPE: Indoor lighting	WEIGHT: 20g
SPEC.: LED	DIM.: 1000*10*1.2MM	SERIAL No.: 20230814043
MFR.: EVERFINE	SUR.: 1000*10MM	Shielding Angle:

Table--2

UNIT: cd

C (DEG) \ γ (DEG)	285	300	315	330	345														
0	358	359	360	362	363														
5	355	355	356	359	362														
10	351	351	353	356	359														
15	344	347	348	351	352														
20	332	334	336	340	342														
25	322	325	324	327	329														
30	306	310	309	312	314														
35	288	291	291	295	297														
40	268	269	272	277	278														
45	247	247	250	255	256														
50	219	222	226	230	232														
55	192	195	197	204	206														
60	161	165	168	172	168														
65	127	131	134	125	115														
70	92.9	97.0	87.5	78.7	71.3														
75	59.1	58.1	53.5	54.1	53.5														
80	30.6	32.7	38.5	40.6	42.1														
85	13.7	20.3	26.4	30.9	31.6														
90	6.31	11.3	15.9	18.2	18.2														
95	6.37	9.91	11.1	9.93	11.8														
100	5.65	14.4	16.2	16.3	17.4														
105	3.05	14.4	19.2	21.2	21.4														
110	2.42	9.21	18.3	22.2	24.3														
115	2.30	5.20	12.9	19.5	22.4														
120	2.35	3.58	8.01	13.6	17.7														
125	2.51	3.18	5.59	9.07	12.2														
130	2.66	2.85	3.57	6.17	8.63														
135	2.85	2.95	3.13	4.60	5.96														
140	3.05	3.13	3.15	3.80	4.61														
145	3.26	3.28	3.31	3.30	4.14														
150	3.45	3.45	3.45	3.51	3.59														
155	3.63	3.63	3.64	3.63	3.68														
160	3.79	3.79	3.80	3.80	3.80														
165	3.94	3.94	3.94	3.96	3.96														
170	4.07	4.08	4.07	4.09	4.10														
175	4.17	4.18	4.17	4.20	4.20														
180	4.23	4.23	4.24	4.24	4.26														

C Range: 0 - 360DEG
 C Interval: 15.0DEG
 Test Speed: HIGH
 Temperature:25.3°C
 Operators:DAMIN
 Test Date:2023-08-15

γ Range: 0 - 180DEG
 γ Interval: 1.0DEG
 Test System:EVERFINE GO-2000B_V1 SYSTEM V2.00.471
 Humidity:65.0%
 Test Distance:4.880m [K=1.0000]
 Remarks: