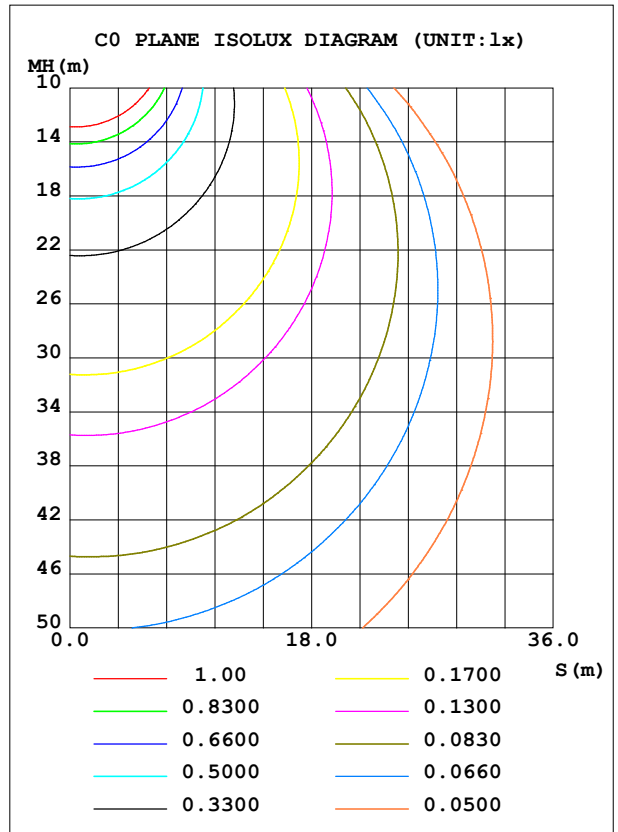
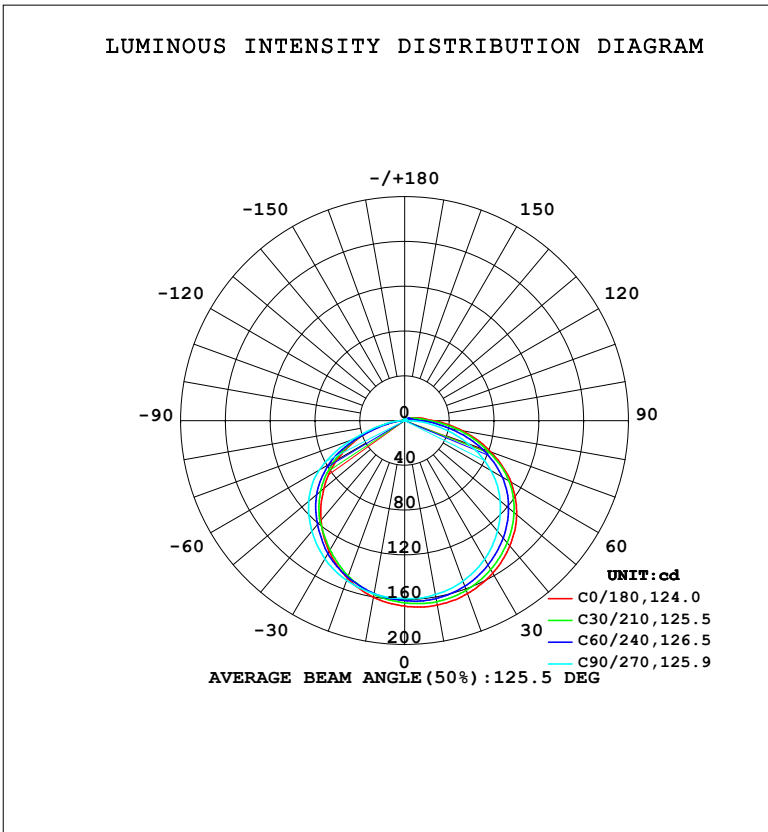


LUMINAIRE PHOTOMETRIC TEST REPORT

NAME: LED Strip	TYPE: Indoor lighting	WEIGHT: 75g
SPEC.: LED	DIM.: 500*12*1.2MM	SERIAL No.: 20240402005
MFR.: EVERFINE	SUR.: 500*12MM	Shielding Angle:

DATA OF LAMP		PHOTOMETRIC DATA			
MODEL: 2000B-24 (WCP) -HR-EP RGBW		Imax (cd)	167.3	S/MH (C0/180)	1.22
NOMINAL POWER (W)	8.97176	LOR (%)	100.0	S/MH (C90/270)	1.33
RATED VOLTAGE (V)	DC 24V	TOTAL FLUX (lm)	551.22	η UP, DN (C0-180)	2.0, 51.0
NOMINAL FLUX (lm)	551.224	CIE CLASS	DIRECT	η UP, DN (C180-360)	1.0, 45.9
LAMPS INSIDE	1	η up (%)	3.1	CIBSE SHR NOM	1.50
TEST VOLTAGE (V)	DC 24V	η down (%)	96.9	CIBSE SHR MAX	1.50



C Range: 0 - 360DEG
 C Interval: 15.0DEG
 Test Speed: HIGH
 Temperature: 25.3°C
 Operators: DAMIN
 Test Date: 2024-04-10

γ Range: 0 - 180DEG
 γ Interval: 1.0DEG
 Test System: EVERFINE GO-2000B_V1 SYSTEM V2.00.471
 Humidity: 65.0%
 Test Distance: 4.880m [K=1.0000]
 Remarks:

ZONAL FLUX DIAGRAM

ZONAL FLUX DIAGRAM:

γ	C0	C45	C90	C135	C180	C225	C270	C315	γ	Φ zone	Φ total	%lum,lamp
10	167.3	162.9	157.8	156.5	160.2	156.8	157.1	161.1	0- 10	15.36	15.36	2.79,2.79
20	164.4	159.3	152.5	149.2	149.8	147.4	151.8	157.6	10- 20	44.51	59.87	10.9,10.9
30	157.3	151.5	142.9	137.2	134.9	134.2	142.6	149.9	20- 30	68.82	128.7	23.3,23.3
40	146.2	139.8	129.0	119.3	116.3	117.9	128.9	138.1	30- 40	85.81	214.5	38.9,38.9
50	130.6	124.9	111.5	100.8	94.31	101.0	111.9	121.5	40- 50	93.51	308.0	55.9,55.9
60	109.6	104.8	88.91	77.39	69.62	75.86	87.78	98.62	50- 60	90.17	398.2	72.2,72.2
70	81.93	78.02	60.34	48.98	41.43	43.57	50.11	63.32	60- 70	73.22	471.4	85.5,85.5
80	52.25	45.63	29.65	20.97	15.40	14.19	17.58	34.15	70- 80	44.87	516.3	93.7,93.7
90	26.00	19.50	6.176	4.791	1.956	1.633	0.7711	9.205	80- 90	18.12	534.4	96.9,96.9
100	14.09	9.515	0.8346	1.748	1.597	1.534	0.7405	5.317	90-100	6.219	540.6	98.1,98.1
110	7.019	5.625	0.9916	1.129	1.541	1.295	0.9466	1.646	100-110	3.338	544.0	98.7,98.7
120	3.122	3.553	1.109	1.158	1.414	1.275	1.154	1.191	110-120	2.080	546.0	99.1,99.1
130	1.695	1.728	1.224	1.361	1.480	1.423	1.359	1.320	120-130	1.451	547.5	99.3,99.3
140	1.320	1.353	1.418	1.573	1.623	1.579	1.551	1.523	130-140	1.143	548.6	99.5,99.5
150	1.517	1.552	1.607	1.781	1.761	1.728	1.724	1.728	140-150	1.012	549.6	99.7,99.7
160	1.720	1.725	1.773	1.977	1.896	1.857	1.874	1.923	150-160	0.8300	550.5	99.9,99.9
170	1.888	1.886	1.972	2.113	2.003	1.955	1.994	2.064	160-170	0.5547	551.0	100,100
180	2.025	2.003	2.052	2.229	2.031	2.004	2.049	2.251	170-180	0.1980	551.2	100,100
DEG	LUMINOUS INTENSITY:cd									UNIT:lm		

Conical surface Flux(90deg): 260.92 lm

%lum = 47.3%

%lamp = 47.3%

Conical surface Flux(120deg): 398.19 lm

%lum = 72.2%

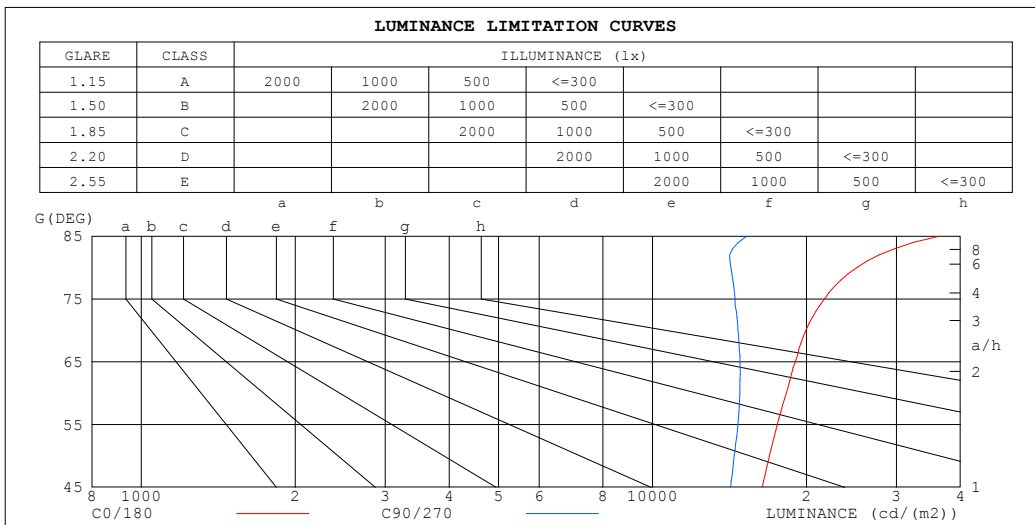
%lamp = 72.2%

C Range: 0 - 360DEG
 C Interval: 15.0DEG
 Test Speed: HIGH
 Temperature:25.3°C
 Operators:DAMIN
 Test Date:2024-04-10

γ Range: 0 - 180DEG
 γ Interval: 1.0DEG
 Test System:EVERFINE GO-2000B_V1 SYSTEM V2.00.471
 Humidity:65.0%
 Test Distance:4.880m [K=1.0000]
 Remarks:

LUMINANCE LIMITATION CURVES

NAME: LED Strip	TYPE: Indoor lighting	WEIGHT: 75g
SPEC.: LED	DIM.: 500*12*1.2MM	SERIAL No.: 20240402005
MFR.: EVERFINE	SUR.: 500*12MM	Shielding Angle:



LUMINANCE cd/(m2)		
G (DEG)	C0/180	C90/270
85	36289	15271
80	25077	14229
75	21677	14495
70	19961	14701
65	19017	14831
60	18274	14818
55	17554	14698
50	16933	14451
45	16389	14223

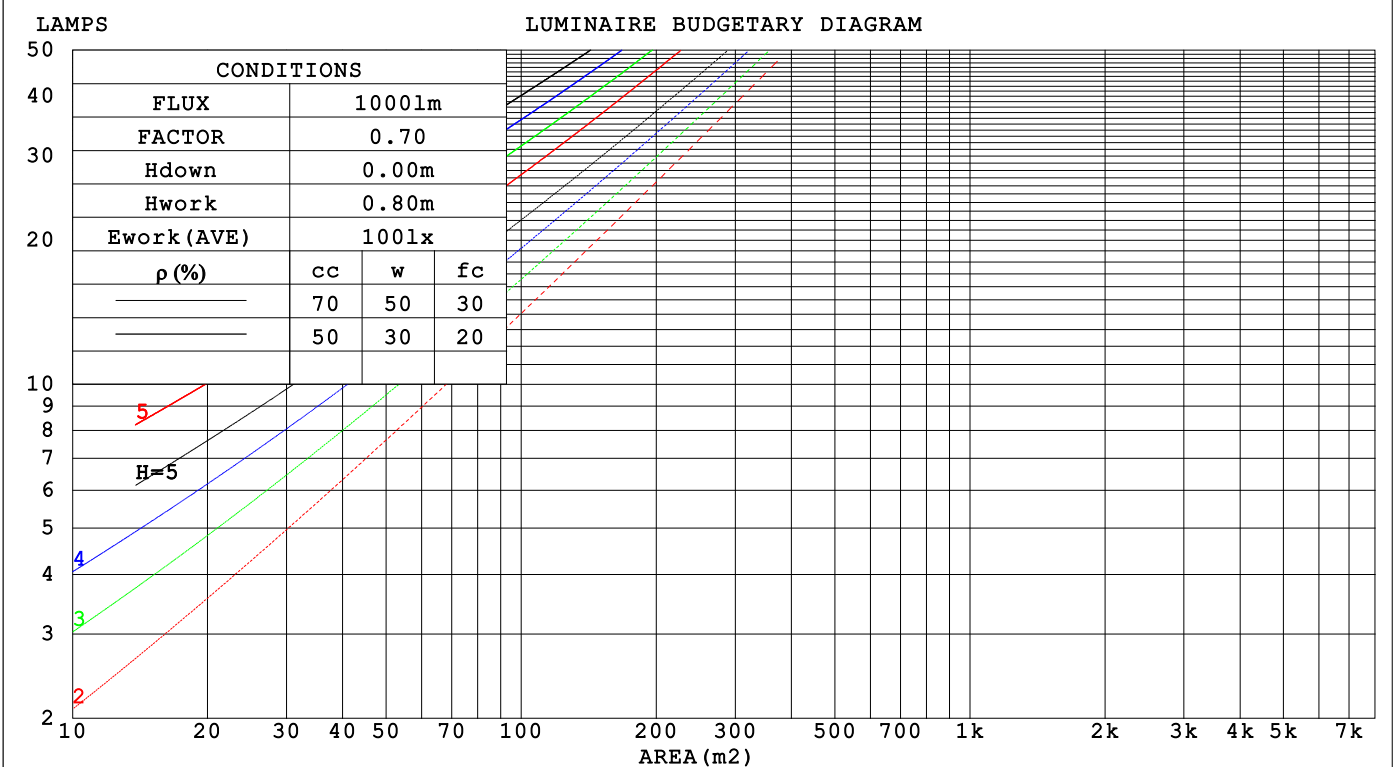
C Range: 0 - 360DEG
 C Interval: 15.0DEG
 Test Speed: HIGH
 Temperature: 25.3°C
 Operators: DAMIN
 Test Date: 2024-04-10

γ Range: 0 - 180DEG
 γ Interval: 1.0DEG
 Test System: EVERFINE GO-2000B_V1 SYSTEM V2.00.471
 Humidity: 65.0%
 Test Distance: 4.880m [K=1.0000]
 Remarks:

CU AND LUMINAIRE BUDGETARY ESTIMATE DIAGRAM

NAME: LED Strip	TYPE: Indoor lighting	WEIGHT: 75g
SPEC.: LED	DIM.: 500*12*1.2MM	SERIAL No.: 20240402005
MFR.: EVERFINE	SUR.: 500*12MM	Shielding Angle:

pcc	80%			70%			50%			30%			10%			0
	50%	30%	10%	50%	30%	10%	50%	30%	10%	50%	30%	10%	50%	30%	10%	0
p _w	0															
p _{fc}	0															
RCR	RCR:Room Cavity Ratio Coefficients of Utilization(CU)															
0.0	1.18	1.18	1.18	1.15	1.15	1.15	1.09	1.09	1.09	1.04	1.04	1.04	.99	.99	.99	.97
1.0	1.02	.97	.93	.99	.95	.91	.94	.91	.88	.90	.87	.84	.86	.83	.81	.79
2.0	.88	.81	.74	.86	.79	.73	.82	.76	.71	.78	.73	.69	.74	.70	.67	.65
3.0	.77	.68	.61	.75	.67	.60	.71	.64	.59	.68	.62	.57	.65	.60	.56	.54
4.0	.67	.58	.51	.66	.57	.51	.63	.56	.50	.60	.54	.49	.58	.52	.48	.45
5.0	.60	.51	.44	.59	.50	.43	.56	.48	.43	.54	.47	.42	.52	.46	.41	.39
6.0	.54	.45	.38	.53	.44	.38	.50	.43	.37	.48	.42	.36	.47	.41	.36	.34
7.0	.49	.40	.33	.48	.39	.33	.46	.38	.33	.44	.37	.32	.42	.36	.32	.29
8.0	.44	.35	.29	.43	.35	.29	.42	.34	.29	.40	.33	.29	.39	.33	.28	.26
9.0	.40	.32	.26	.40	.32	.26	.38	.31	.26	.37	.30	.26	.36	.30	.25	.23
10.0	.37	.29	.24	.37	.29	.24	.35	.28	.23	.34	.28	.23	.33	.27	.23	.21



C Range: 0 - 360DEG
 C Interval: 15.0DEG
 Test Speed: HIGH
 Temperature:25.3°C
 Operators:DAMIN
 Test Date:2024-04-10

γ Range: 0 - 180DEG
 γ Interval: 1.0DEG
 Test System:EVERFINE GO-2000B_V1 SYSTEM V2.00.471
 Humidity:65.0%
 Test Distance:4.880m [K=1.0000]
 Remarks:

WEC AND CCEC

NAME: LED Strip	TYPE: Indoor lighting	WEIGHT: 75g
SPEC.: LED	DIM.: 500*12*1.2MM	SERIAL No.: 20240402005
MFR.: EVERFINE	SUR.: 500*12MM	Shielding Angle:

ρ_{CC}	80%			70%			50%			30%			10%			0
ρ_w	50%	30%	10%	50%	30%	10%	50%	30%	10%	50%	30%	10%	50%	30%	10%	0
ρ_{fc}	20%			20%			20%			20%			20%			0
RCR	RCR:Room Cavity Ratio						Wall Exitance Coefficients(WEC)									
0.0																
1.0	.336	.191	.060	.328	.187	.059	.313	.179	.057	.299	.172	.055	.286	.166	.053	
2.0	.309	.169	.052	.302	.166	.051	.289	.160	.050	.276	.155	.048	.265	.150	.047	
3.0	.283	.151	.045	.276	.148	.045	.264	.143	.044	.253	.139	.043	.243	.135	.042	
4.0	.259	.135	.040	.253	.133	.039	.243	.129	.038	.233	.125	.038	.223	.121	.037	
5.0	.238	.121	.035	.233	.120	.035	.223	.116	.034	.215	.113	.034	.206	.110	.033	
6.0	.220	.110	.032	.215	.109	.031	.207	.106	.031	.199	.103	.030	.191	.101	.030	
7.0	.204	.101	.029	.200	.100	.028	.192	.097	.028	.185	.095	.028	.178	.093	.027	
8.0	.190	.093	.026	.186	.092	.026	.179	.090	.026	.173	.088	.025	.167	.086	.025	
9.0	.178	.086	.024	.174	.085	.024	.168	.083	.024	.162	.081	.023	.156	.079	.023	
10.0	.167	.080	.022	.164	.079	.022	.158	.077	.022	.152	.076	.022	.147	.074	.021	

ρ_{CC}	80%			70%			50%			30%			10%			0
ρ_w	50%	30%	10%	50%	30%	10%	50%	30%	10%	50%	30%	10%	50%	30%	10%	0
ρ_{fc}	20%			20%			20%			20%			20%			0
RCR	RCR:Room Cavity Ratio						Ceiling Cavity Exitance Coefficients(CCEC)									
0.0	.214	.214	.214	.183	.183	.183	.125	.125	.125	.072	.072	.072	.023	.023	.023	
1.0	.206	.179	.156	.176	.154	.134	.120	.106	.093	.069	.061	.054	.022	.020	.017	
2.0	.198	.155	.120	.170	.134	.103	.116	.093	.072	.067	.054	.042	.022	.017	.014	
3.0	.191	.138	.096	.163	.119	.083	.112	.083	.059	.065	.048	.034	.021	.016	.011	
4.0	.183	.125	.081	.157	.108	.070	.108	.075	.049	.063	.044	.029	.020	.014	.010	
5.0	.176	.115	.070	.151	.099	.061	.104	.069	.043	.060	.041	.025	.019	.013	.008	
6.0	.168	.107	.062	.145	.092	.054	.100	.065	.038	.058	.038	.023	.019	.012	.008	
7.0	.161	.100	.057	.139	.086	.049	.096	.061	.035	.056	.036	.021	.018	.012	.007	
8.0	.155	.094	.052	.133	.082	.046	.092	.057	.032	.054	.034	.019	.017	.011	.006	
9.0	.149	.089	.049	.128	.077	.043	.089	.054	.030	.052	.032	.018	.017	.011	.006	
10.0	.143	.085	.046	.123	.074	.040	.085	.052	.029	.050	.031	.017	.016	.010	.006	

C Range: 0 - 360DEG
 C Interval: 15.0DEG
 Test Speed: HIGH
 Temperature:25.3°C
 Operators:DAMIN
 Test Date:2024-04-10

γ Range: 0 - 180DEG
 γ Interval: 1.0DEG
 Test System:EVERFINE GO-2000B_V1 SYSTEM V2.00.471
 Humidity:65.0%
 Test Distance:4.880m [K=1.0000]
 Remarks:

UGR(Unified Glare Rating) Table

NAME: LED Strip		TYPE: Indoor lighting				WEIGHT: 75g					
SPEC.: LED		DIM.: 500*12*1.2MM				SERIAL No.: 20240402005					
MFR.: EVERFINE		SUR.: 500*12MM				Shielding Angle:					
ceiling/cavity		0.7	0.7	0.5	0.5	0.3	0.7	0.7	0.5	0.5	0.3
walls		0.5	0.3	0.5	0.3	0.3	0.5	0.3	0.5	0.3	0.3
working plane		0.2	0.2	0.2	0.2	0.2	0.2	0.2	0.2	0.2	0.2
Room dimensions		Viewed crosswise					Viewed endwise				
x = 2H y = 2H		25.5	27.0	25.8	27.3	27.6	24.8	26.3	25.1	26.6	26.8
	3H	27.7	29.1	28.0	29.4	29.7	26.6	28.0	26.9	28.3	28.6
	4H	28.7	30.1	29.1	30.4	30.7	27.4	28.7	27.7	29.0	29.4
	6H	29.7	31.0	30.1	31.3	31.6	28.0	29.3	28.4	29.6	29.9
	8H	30.2	31.4	30.6	31.8	32.1	28.2	29.4	28.6	29.8	30.1
	12H	30.7	31.9	31.1	32.2	32.6	28.4	29.6	28.8	29.9	30.3
	4H 2H	26.2	27.6	26.6	27.9	28.2	25.7	27.0	26.1	27.4	27.7
	3H	28.6	29.8	29.0	30.1	30.5	27.7	28.9	28.1	29.3	29.7
	4H	29.8	30.9	30.2	31.2	31.6	28.7	29.8	29.1	30.1	30.5
	6H	30.9	31.9	31.4	32.3	32.8	29.4	30.4	29.9	30.8	31.3
	8H	31.5	32.4	32.0	32.9	33.3	29.8	30.7	30.2	31.1	31.5
	12H	32.1	33.0	32.6	33.4	33.9	30.0	30.8	30.5	31.3	31.7
	8H 4H	30.2	31.1	30.6	31.5	31.9	29.2	30.1	29.7	30.6	31.0
	6H	31.6	32.3	32.1	32.8	33.3	30.3	31.0	30.7	31.5	32.0
	8H	32.3	33.0	32.8	33.5	34.0	30.7	31.4	31.2	31.9	32.4
	12H	33.1	33.7	33.6	34.2	34.7	31.1	31.7	31.6	32.2	32.7
	12H 4H	30.2	31.0	30.7	31.5	31.9	29.3	30.2	29.8	30.6	31.1
	6H	31.7	32.4	32.2	32.8	33.4	30.5	31.1	31.0	31.6	32.1
	8H	32.5	33.1	33.0	33.6	34.1	31.0	31.6	31.5	32.1	32.6
Variations with the observer position at spacings(CIE Pub.117):											
S = 1.0H		+ 0.1 / - 0.1					+ 0.1 / - 0.2				
1.5H		+ 0.2 / - 0.3					+ 0.2 / - 0.3				
2.0H		+ 0.2 / - 0.4					+ 0.2 / - 0.5				

CIE Pub.117, 551.2 lm Total Lamp Luminous Flux Correct (8log(F/F0) = -2.1)
 Area: 0.012 m2

C Range: 0 - 360DEG
 C Interval: 15.0DEG
 Test Speed: HIGH
 Temperature:25.3°C
 Operators:DAMIN
 Test Date:2024-04-10

γ Range: 0 - 180DEG
 γ Interval: 1.0DEG
 Test System:EVERFINE GO-2000B_V1 SYSTEM V2.00.471
 Humidity:65.0%
 Test Distance:4.880m [K=1.0000]
 Remarks:

UTILIZATION FACTORS TABLE

NAME: LED Strip	TYPE: Indoor lighting	WEIGHT: 75g
SPEC.: LED	DIM.: 500*12*1.2MM	SERIAL No.: 20240402005
MFR.: EVERFINE	SUR.: 500*12MM	Shielding Angle:

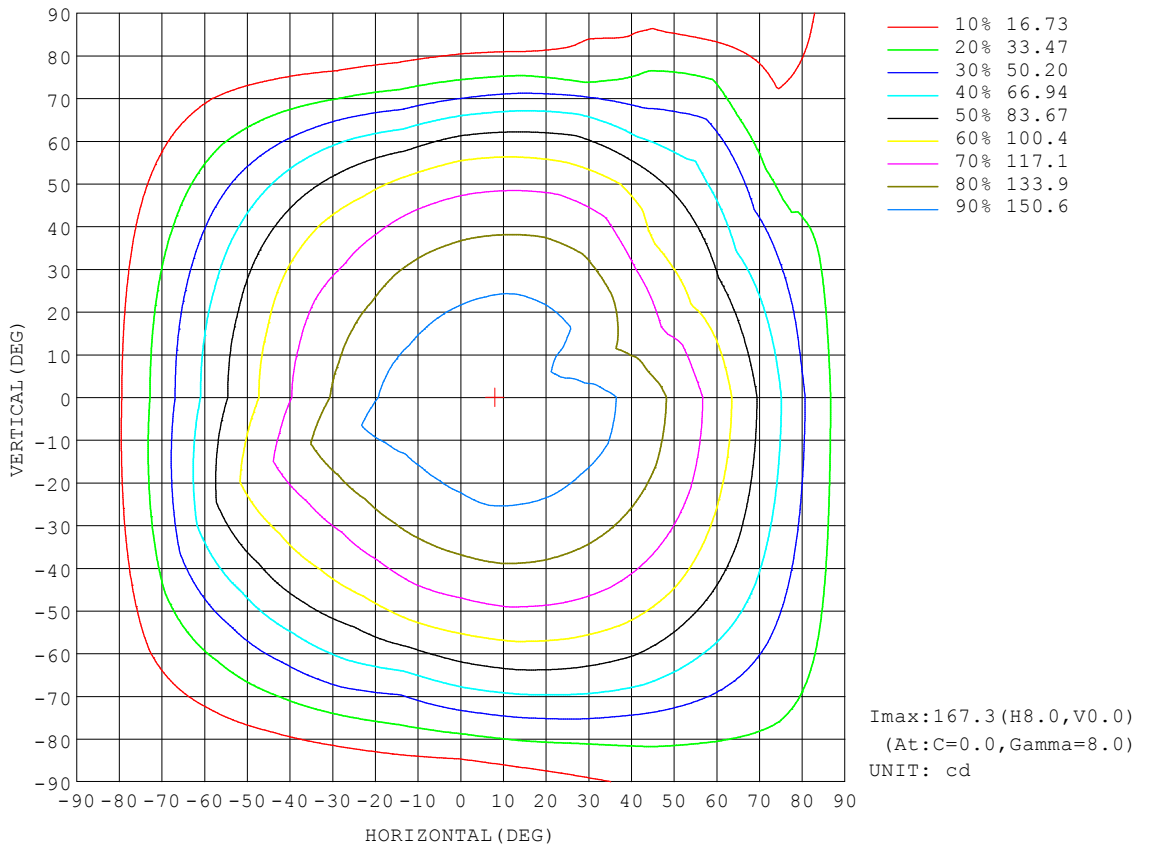
REFLECTANCE										
Ceiling	0.8	0.8	0.8	0.7	0.7	0.7	0.5	0.5	0.5	0
Walls	0.7	0.5	0.3	0.7	0.5	0.3	0.7	0.5	0.3	0
Working plane	0.2	0.2	0.2	0.2	0.2	0.2	0.2	0.2	0.2	0
ROOM INDEX	UTILIZATION FACTORS (PERCENT) $k(RI) \times RCR = 5$									
$k = 0.60$	54	42	35	53	42	35	52	41	35	28
0.80	64	52	44	63	51	44	61	50	43	36
1.00	72	61	53	71	60	53	69	61	52	44
1.25	80	68	61	78	68	60	75	66	59	51
1.50	85	74	67	83	73	66	80	71	65	56
2.00	92	83	76	90	81	75	86	79	73	64
2.50	96	88	81	94	86	80	90	83	78	69
3.00	100	92	86	97	90	85	93	87	82	73
4.00	104	98	92	101	96	91	97	92	88	78
5.00	107	101	97	104	99	95	99	95	91	81
ROOM INDEX	UF(total)									Direct
According to DIN EN 13032-2 2004			Suspended				SHRNOM = 1.25			

C Range: 0 - 360DEG
 C Interval: 15.0DEG
 Test Speed: HIGH
 Temperature: 25.3°C
 Operators: DAMIN
 Test Date: 2024-04-10

γ Range: 0 - 180DEG
 γ Interval: 1.0DEG
 Test System: EVERFINE GO-2000B_V1 SYSTEM V2.00.471
 Humidity: 65.0%
 Test Distance: 4.880m [K=1.0000]
 Remarks:

ISOCANDELA DIAGRAM

NAME: LED Strip	TYPE: Indoor lighting	WEIGHT: 75g
SPEC.: LED	DIM.: 500*12*1.2MM	SERIAL No.: 20240402005
MFR.: EVERFINE	SUR.: 500*12MM	Shielding Angle:



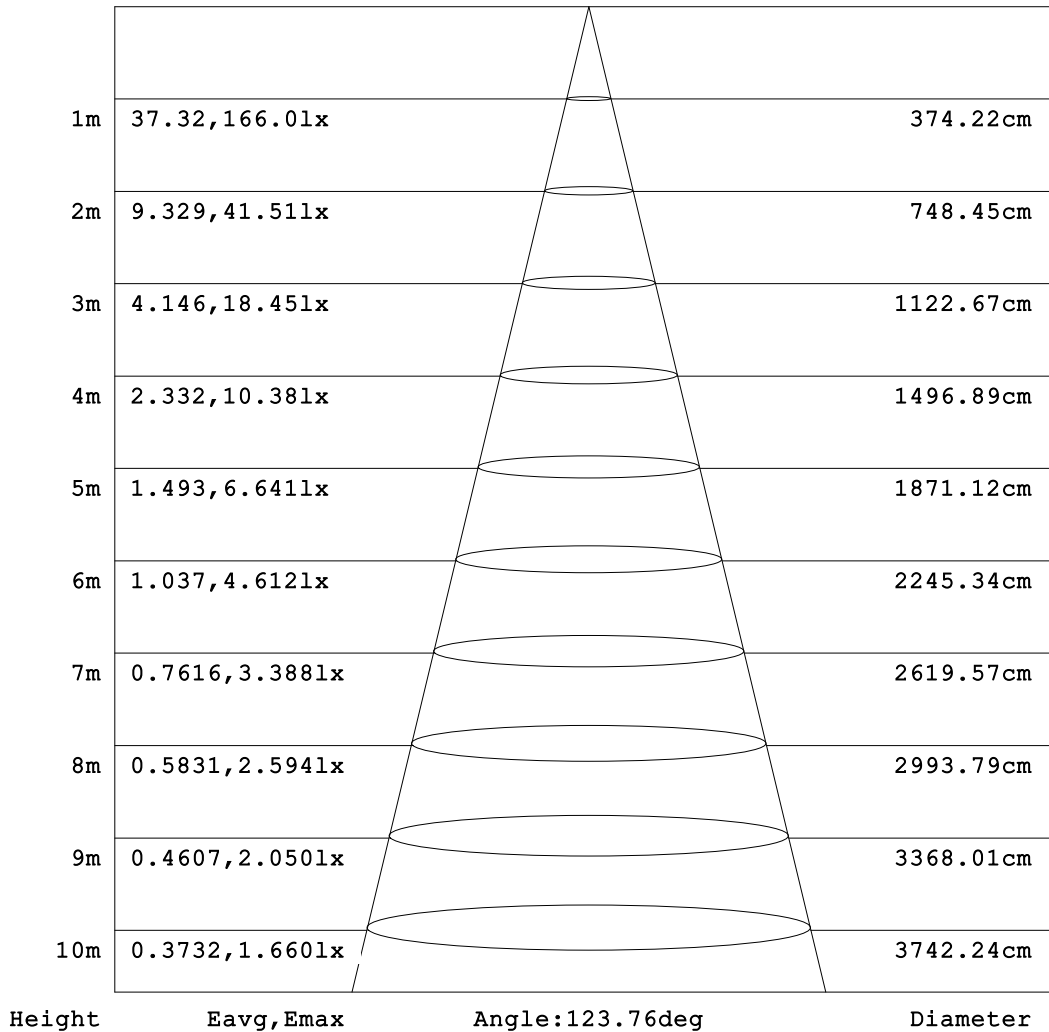
C Range: 0 - 360DEG
 C Interval: 15.0DEG
 Test Speed: HIGH
 Temperature:25.3°C
 Operators:DAMIN
 Test Date:2024-04-10

γ Range: 0 - 180DEG
 γ Interval: 1.0DEG
 Test System:EVERFINE GO-2000B_V1 SYSTEM V2.00.471
 Humidity:65.0%
 Test Distance:4.880m [K=1.0000]
 Remarks:

AAI Figure

NAME: LED Strip	TYPE: Indoor lighting	WEIGHT: 75g
SPEC.: LED	DIM.: 500*12*1.2MM	SERIAL No.: 20240402005
MFR.: EVERFINE	SUR.: 500*12MM	Shielding Angle:

Flux out:414.7 lm



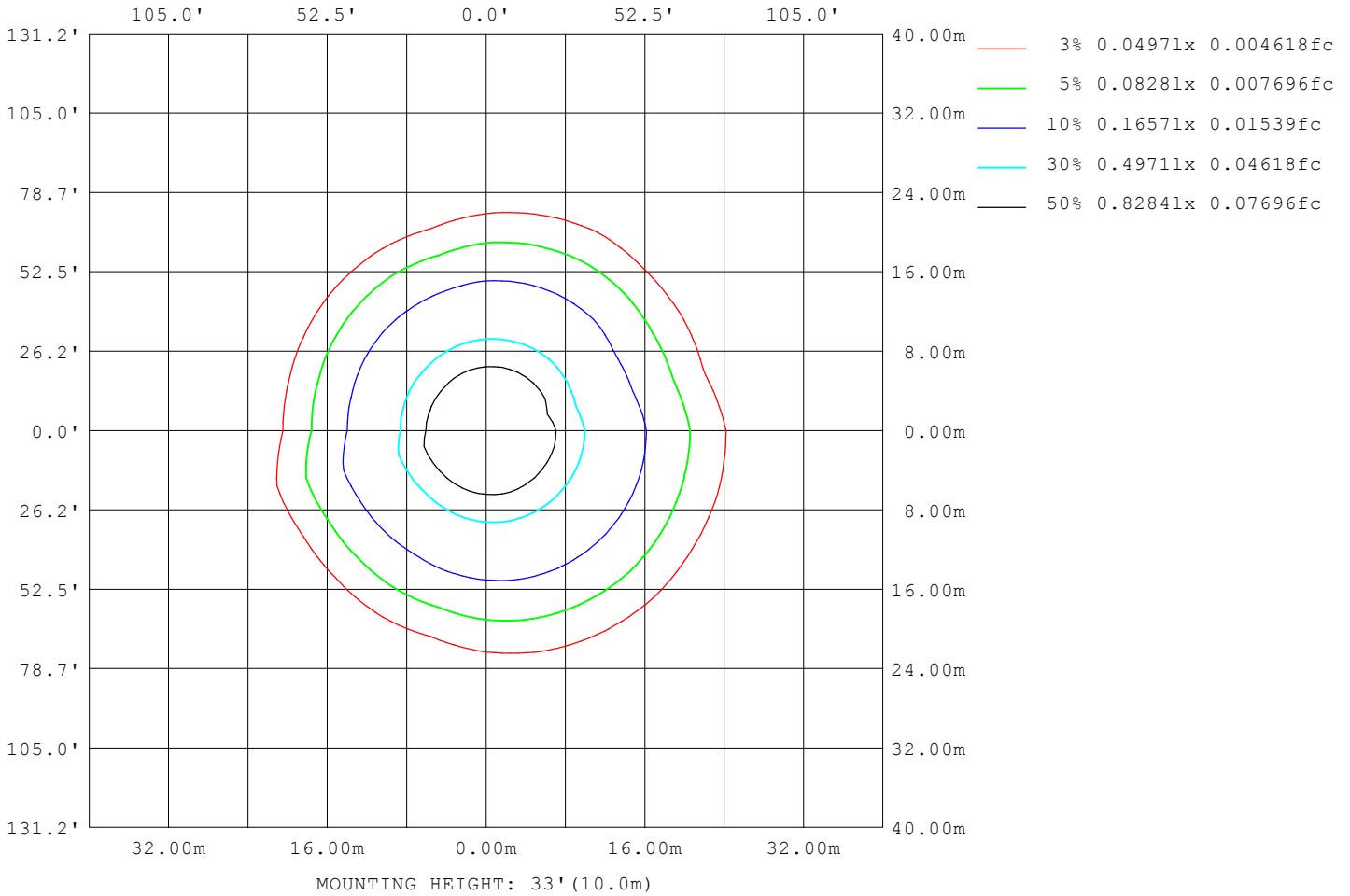
Note: The Curves indicate the illuminated area and the average illumination when the luminaire is at different distance.

C Range: 0 - 360DEG
 C Interval: 15.0DEG
 Test Speed: HIGH
 Temperature: 25.3°C
 Operators: DAMIN
 Test Date: 2024-04-10

γ Range: 0 - 180DEG
 γ Interval: 1.0DEG
 Test System: EVERFINE GO-2000B_V1 SYSTEM V2.00.471
 Humidity: 65.0%
 Test Distance: 4.880m [K=1.0000]
 Remarks:

ISOLUX DIAGRAM

NAME: LED Strip	TYPE: Indoor lighting	WEIGHT: 75g
SPEC.: LED	DIM.: 500*12*1.2MM	SERIAL No.: 20240402005
MFR.: EVERFINE	SUR.: 500*12MM	Shielding Angle:



C Range: 0 - 360DEG
 C Interval: 15.0DEG
 Test Speed: HIGH
 Temperature: 25.3°C
 Operators: DAMIN
 Test Date: 2024-04-10

γ Range: 0 - 180DEG
 γ Interval: 1.0DEG
 Test System: EVERFINE GO-2000B_V1 SYSTEM V2.00.471
 Humidity: 65.0%
 Test Distance: 4.880m [K=1.0000]
 Remarks:

LED Avg.L Report

NAME: LED Strip	TYPE: Indoor lighting	WEIGHT: 75g
SPEC.: LED	DIM.: 500*12*1.2MM	SERIAL No.: 20240402005
MFR.: EVERFINE	SUR.: 500*12MM	Shielding Angle:

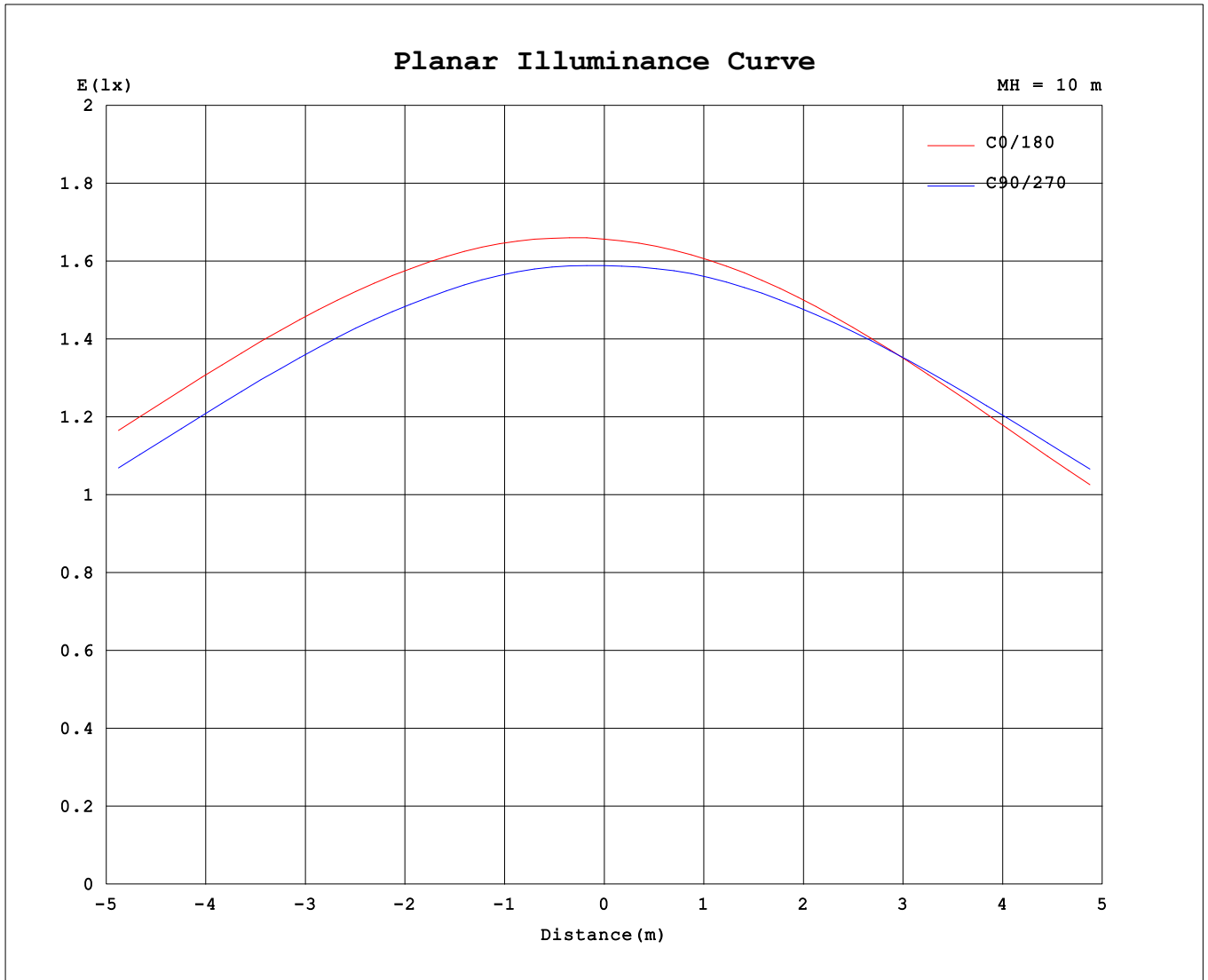
AvgL	cd/m2
L_0~180 (65) av	14991
L_0~180 (75) av	15276
L_0~180 (85) av	21041
L_90~270 (65) av	14372
L_90~270 (75) av	12288
L_90~270 (85) av	11435
L_45 (65) av	14658
L_45 (75) av	13796
L_45 (85) av	16108

Standard: GB/T 29293-2012

C Range: 0 - 360DEG
 C Interval: 15.0DEG
 Test Speed: HIGH
 Temperature:25.3°C
 Operators:DAMIN
 Test Date:2024-04-10

γ Range: 0 - 180DEG
 γ Interval: 1.0DEG
 Test System:EVERFINE GO-2000B_V1 SYSTEM V2.00.471
 Humidity:65.0%
 Test Distance:4.880m [K=1.0000]
 Remarks:

Planar Illuminance Curve



C Range: 0 - 360DEG
 C Interval: 15.0DEG
 Test Speed: HIGH
 Temperature: 25.3°C
 Operators: DAMIN
 Test Date: 2024-04-10

γ Range: 0 - 180DEG
 γ Interval: 1.0DEG
 Test System: EVERFINE GO-2000B_V1 SYSTEM V2.00.471
 Humidity: 65.0%
 Test Distance: 4.880m [K=1.0000]
 Remarks:

LUMINOUS DISTRIBUTION INTENSITY DATA

NAME: LED Strip	TYPE: Indoor lighting	WEIGHT: 75g
SPEC.: LED	DIM.: 500*12*1.2MM	SERIAL No.: 20240402005
MFR.: EVERFINE	SUR.: 500*12MM	Shielding Angle:

Table--1

UNIT: cd

C (DEG) \ γ (DEG)	0	15	30	45	60	75	90	105	120	135	150	165	180	195	210	225	240	255	270
0	166	165	163	162	161	160	159	159	159	160	162	165	166	165	163	162	161	160	159
5	167	166	164	163	162	161	159	158	158	159	161	164	163	162	161	160	159	159	159
10	167	166	164	163	161	160	158	157	156	156	159	162	160	159	158	157	157	157	157
15	166	166	163	162	160	158	156	154	154	153	155	159	156	154	153	153	153	154	155
20	164	164	161	159	157	155	153	151	149	149	151	155	150	148	148	147	149	150	152
25	161	161	158	156	154	152	148	146	144	144	146	150	143	141	141	141	144	145	148
30	157	157	154	152	149	147	143	140	138	137	139	144	135	133	133	134	137	140	143
35	152	152	149	146	143	141	137	133	131	129	131	136	126	125	125	126	129	133	136
40	146	146	143	140	137	134	129	126	122	119	122	128	116	116	118	118	121	125	129
45	139	138	136	133	130	126	121	117	111	110	112	119	106	106	108	110	113	117	121
50	131	130	128	125	121	117	111	107	102	101	103	110	94.3	94.7	98.1	101	103	107	112
55	121	121	118	116	112	107	101	95.8	89.8	90.0	91.8	98.8	82.6	83.2	86.2	89.2	91.2	94.9	101
60	110	109	107	105	101	95.7	88.9	81.0	78.9	77.4	78.8	85.2	69.6	70.1	73.0	75.9	78.4	79.4	87.8
65	96.4	95.7	94.4	92.3	87.8	82.5	75.2	66.5	66.3	63.4	64.0	69.7	55.6	56.1	58.2	60.5	61.9	62.0	70.6
70	81.9	81.8	79.0	78.0	73.3	67.5	60.3	51.0	51.8	49.0	48.8	52.7	41.4	41.7	43.5	43.6	43.0	42.6	50.1
75	67.3	66.9	64.3	62.1	57.6	51.9	45.0	38.9	37.1	34.8	33.7	35.9	27.6	27.7	28.7	27.0	25.1	26.2	31.3
80	52.3	51.4	49.0	45.6	40.8	35.9	29.7	25.8	23.3	21.0	20.0	20.4	15.4	15.3	15.8	14.2	13.1	14.3	17.6
85	38.0	36.9	34.2	31.2	26.2	21.4	16.0	14.4	11.9	10.2	9.37	9.11	6.06	5.92	6.21	5.55	5.19	5.87	7.95
90	26.0	25.2	22.5	19.5	15.3	10.8	6.18	5.29	5.44	4.79	4.65	4.08	1.96	1.91	1.92	1.63	1.27	1.22	0.77
95	18.9	18.2	16.0	13.3	10.1	6.75	0.88	1.51	2.57	3.12	3.87	3.49	1.63	1.62	1.62	1.54	1.24	0.81	0.69
100	14.1	13.5	11.8	9.51	7.47	5.72	0.83	0.91	1.29	1.75	2.75	3.19	1.60	1.58	1.61	1.53	1.23	0.82	0.74
105	10.2	9.72	8.61	7.18	6.01	4.92	0.90	0.89	1.01	1.36	1.90	2.93	1.59	1.61	1.58	1.45	1.11	0.88	0.84
110	7.02	6.78	6.25	5.63	5.26	4.61	0.99	0.95	0.97	1.13	1.62	2.36	1.54	1.57	1.48	1.29	1.12	0.98	0.95
115	4.63	4.54	4.51	4.65	4.67	4.21	1.02	1.02	1.04	1.10	1.43	1.86	1.45	1.44	1.35	1.25	1.17	1.09	1.05
120	3.12	3.06	3.42	3.55	4.18	3.39	1.11	1.11	1.11	1.16	1.26	1.76	1.41	1.40	1.34	1.27	1.25	1.18	1.15
125	2.26	2.25	2.69	2.50	3.79	1.17	1.15	1.19	1.21	1.25	1.23	1.76	1.43	1.40	1.38	1.35	1.33	1.28	1.26
130	1.69	1.80	2.25	1.73	1.20	1.22	1.22	1.27	1.30	1.36	1.33	1.73	1.48	1.46	1.45	1.42	1.42	1.38	1.36
135	1.37	1.53	1.93	1.26	1.28	1.31	1.32	1.37	1.40	1.46	1.43	1.53	1.55	1.53	1.53	1.50	1.50	1.47	1.46
140	1.32	1.35	1.33	1.35	1.37	1.38	1.42	1.46	1.50	1.57	1.54	1.54	1.62	1.61	1.60	1.58	1.59	1.56	1.55
145	1.41	1.45	1.43	1.45	1.45	1.49	1.52	1.56	1.63	1.68	1.65	1.63	1.69	1.67	1.68	1.66	1.67	1.65	1.64
150	1.52	1.54	1.54	1.55	1.55	1.58	1.61	1.65	1.74	1.78	1.77	1.75	1.76	1.74	1.75	1.73	1.74	1.73	1.72
155	1.62	1.64	1.63	1.64	1.64	1.68	1.69	1.74	1.81	1.88	1.88	1.87	1.83	1.81	1.81	1.79	1.81	1.81	1.80
160	1.72	1.73	1.71	1.73	1.72	1.76	1.77	1.81	1.89	1.98	1.99	2.00	1.90	1.86	1.87	1.86	1.88	1.87	1.87
165	1.81	1.81	1.79	1.81	1.80	1.87	2.02	1.98	2.01	2.06	2.14	2.15	1.96	1.92	1.93	1.91	1.93	1.93	1.94
170	1.89	1.90	1.87	1.89	1.90	1.94	1.97	2.03	2.06	2.11	2.21	2.28	2.00	1.96	1.97	1.96	1.98	1.98	1.99
175	1.97	1.97	1.94	1.96	1.96	2.00	2.02	2.07	2.09	2.14	2.28	2.40	2.03	2.00	2.00	1.99	2.01	2.02	2.04
180	2.03	2.02	2.00	2.00	2.01	2.03	2.05	2.08	2.16	2.23	2.33	2.57	2.03	2.01	2.01	2.00	2.01	2.03	2.05

C Range: 0 - 360DEG
 C Interval: 15.0DEG
 Test Speed: HIGH
 Temperature:25.3°C
 Operators:DAMIN
 Test Date:2024-04-10

γ Range: 0 - 180DEG
 γ Interval: 1.0DEG
 Test System:EVERFINE GO-2000B_V1 SYSTEM V2.00.471
 Humidity:65.0%
 Test Distance:4.880m [K=1.0000]
 Remarks:

LUMINOUS DISTRIBUTION INTENSITY DATA

NAME: LED Strip	TYPE: Indoor lighting	WEIGHT: 75g
SPEC.: LED	DIM.: 500*12*1.2MM	SERIAL No.: 20240402005
MFR.: EVERFINE	SUR.: 500*12MM	Shielding Angle:

Table--2

UNIT: cd

C (DEG) \ γ (DEG)	285	300	315	330	345														
0	159	159	160	162	165														
5	159	160	161	163	165														
10	158	160	161	163	164														
15	156	158	160	162	161														
20	154	156	158	159	154														
25	150	153	154	156	145														
30	146	148	150	151	139														
35	140	143	144	145	136														
40	132	136	138	137	132														
45	125	129	131	127	124														
50	116	120	121	114	115														
55	106	109	110	102	106														
60	92.9	96.6	98.6	91.3	95.0														
65	77.1	82.6	81.2	82.1	80.6														
70	58.3	62.9	63.3	67.9	64.5														
75	36.6	37.9	47.4	55.7	49.9														
80	20.0	22.0	34.2	40.1	25.9														
85	5.21	16.1	20.5	25.2	17.2														
90	1.72	8.27	9.20	13.6	6.46														
95	1.52	4.63	8.29	8.00	2.47														
100	0.99	2.76	5.32	5.00	1.54														
105	0.83	1.52	3.09	2.77	1.39														
110	0.92	1.09	1.65	1.65	1.23														
115	1.02	1.08	1.25	1.35	1.42														
120	1.11	1.14	1.19	1.29	1.51														
125	1.22	1.22	1.24	1.33	1.63														
130	1.32	1.31	1.32	1.41	1.76														
135	1.41	1.42	1.42	1.52	1.92														
140	1.52	1.51	1.52	1.63	2.06														
145	1.61	1.60	1.63	1.74	2.20														
150	1.70	1.69	1.73	1.86	2.32														
155	1.78	1.79	1.83	1.96	2.46														
160	1.86	1.87	1.92	2.07	2.53														
165	1.93	1.95	2.01	2.15	2.58														
170	1.98	2.02	2.06	2.25	2.63														
175	2.04	2.07	2.19	2.34	2.68														
180	2.08	2.14	2.25	2.28	2.66														

C Range: 0 - 360DEG
 C Interval: 15.0DEG
 Test Speed: HIGH
 Temperature:25.3°C
 Operators:DAMIN
 Test Date:2024-04-10

γ Range: 0 - 180DEG
 γ Interval: 1.0DEG
 Test System:EVERFINE GO-2000B_V1 SYSTEM V2.00.471
 Humidity:65.0%
 Test Distance:4.880m [K=1.0000]
 Remarks: