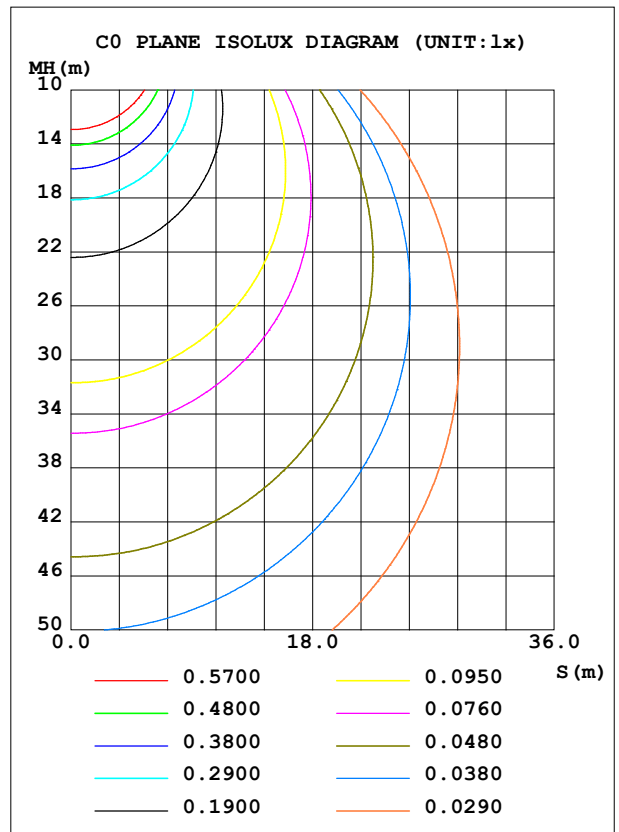
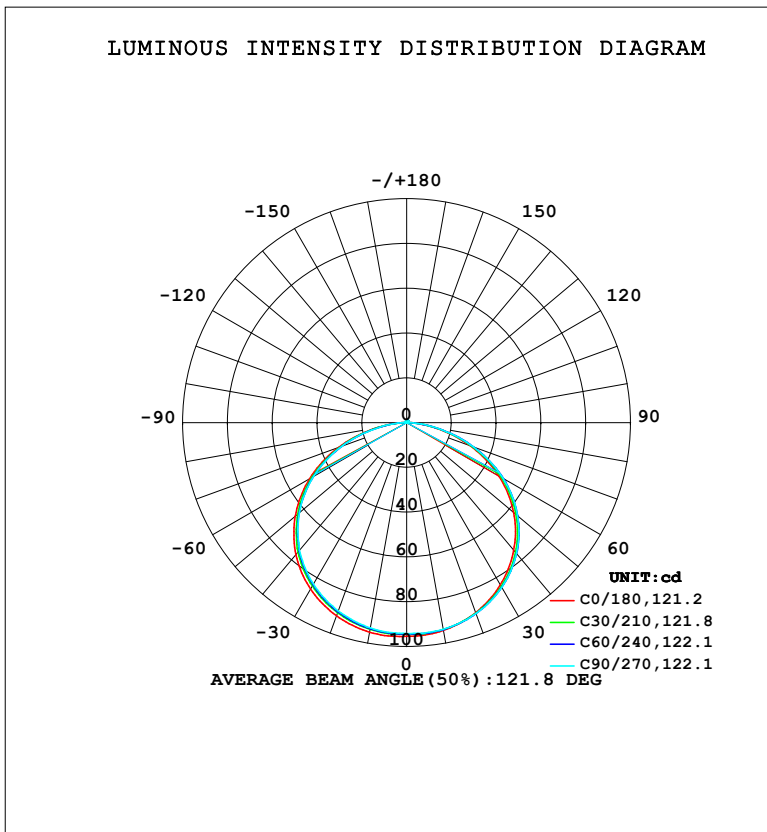


LUMINAIRE PHOTOMETRIC TEST REPORT

NAME: LED Strip	TYPE: Indoor lighting	WEIGHT: 75g
SPEC.: 2835 080LED	DIM.: 500*12*4.5MM	SERIAL No.: 20231004150
MFR.: EVERFINE	SUR.: 500*12MM	Shielding Angle:

DATA OF LAMP		PHOTOMETRIC DATA			
MODEL: 2835 080F-24 (WCP)-VR-G-FS-EP		Imax (cd)	96.29	S/MH (C0/180)	1.34
NOMINAL POWER (W)	2.41461	LOR (%)	100.0	S/MH (C90/270)	1.32
RATED VOLTAGE (V)	DC 24V	TOTAL FLUX (lm)	303.44	η UP, DN (C0-180)	0.7, 49.8
NOMINAL FLUX (lm)	303.436	CIE CLASS	DIRECT	η UP, DN (C180-360)	0.7, 48.8
LAMPS INSIDE	1	η up (%)	1.4	CIBSE SHR NOM	1.50
TEST VOLTAGE (V)	DC 24V	η down (%)	98.6	CIBSE SHR MAX	1.50



C Range: 0 - 360DEG
 C Interval: 15.0DEG
 Test Speed: HIGH
 Temperature: 25.3°C
 Operators: DAMIN
 Test Date: 2023-10-21

γ Range: 0 - 180DEG
 γ Interval: 1.0DEG
 Test System: EVERFINE GO-2000B_V1 SYSTEM V2.00.471
 Humidity: 65.0%
 Test Distance: 4.880m [K=1.0000]
 Remarks:

ZONAL FLUX DIAGRAM

ZONAL FLUX DIAGRAM:

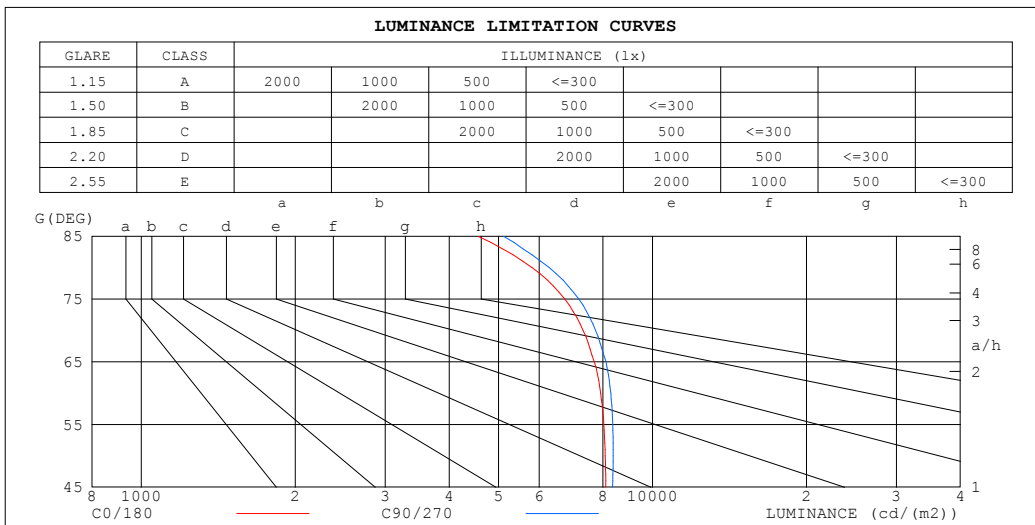
γ	C0	C45	C90	C135	C180	C225	C270	C315	γ	Φ zone	Φ total	%lum,lamp
10	94.27	93.86	93.73	94.31	95.02	93.46	93.11	93.72	0- 10	9.020	9.020	2.97,2.97
20	90.30	90.61	90.68	91.20	91.81	89.86	89.43	90.04	10- 20	26.17	35.19	11.6,11.6
30	83.70	84.83	84.96	85.46	85.85	83.73	83.26	83.89	20- 30	40.54	75.74	25,25
40	74.43	76.21	76.34	76.80	77.04	74.89	74.51	75.01	30- 40	50.37	126.1	41.6,41.6
50	62.33	64.30	64.61	64.77	64.94	63.11	62.55	63.24	40- 50	53.99	180.1	59.4,59.4
60	47.51	49.39	49.71	49.71	50.02	48.35	47.96	48.05	50- 60	50.53	230.6	76,76
70	30.00	31.73	31.74	31.93	32.33	30.83	30.66	29.74	60- 70	39.67	270.3	89.1,89.1
80	12.11	13.21	13.09	13.13	13.70	12.71	12.58	12.33	70- 80	22.74	293.0	96.6,96.6
90	0.7558	0.9688	0.6698	0.9560	0.9823	0.8084	0.6320	0.9740	80- 90	6.236	299.3	98.6,98.6
100	0.3824	0.3554	0.3443	0.4167	0.3628	0.3700	0.3984	0.3958	90-100	0.5149	299.8	98.8,98.8
110	0.4606	0.4621	0.4606	0.4559	0.4756	0.4900	0.5271	0.5073	100-110	0.4693	300.3	99,99
120	0.5795	0.5809	0.5770	0.5724	0.5957	0.6150	0.6557	0.6310	110-120	0.5460	300.8	99.1,99.1
130	0.6971	0.7011	0.6959	0.6900	0.7109	0.7314	0.7709	0.7547	120-130	0.5950	301.4	99.3,99.3
140	0.8111	0.8211	0.8123	0.8089	0.8236	0.8381	0.8800	0.8675	130-140	0.6043	302.0	99.5,99.5
150	0.9202	0.9326	0.9202	0.9278	0.9290	0.9386	0.9743	0.9717	140-150	0.5600	302.6	99.7,99.7
160	1.028	1.028	1.013	1.036	1.032	1.031	1.056	1.056	150-160	0.4604	303.0	99.9,99.9
170	1.110	1.108	1.097	1.132	1.119	1.102	1.123	1.136	160-170	0.3074	303.3	100,100
180	1.160	1.152	1.147	1.179	1.160	1.151	1.148	1.189	170-180	0.1098	303.4	100,100
DEG	LUMINOUS INTENSITY:cd									UNIT:lm		

C Range: 0 - 360DEG
 C Interval: 15.0DEG
 Test Speed: HIGH
 Temperature:25.3°C
 Operators:DAMIN
 Test Date:2023-10-21

γ Range: 0 - 180DEG
 γ Interval: 1.0DEG
 Test System:EVERFINE GO-2000B_V1 SYSTEM V2.00.471
 Humidity:65.0%
 Test Distance:4.880m [K=1.0000]
 Remarks:

LUMINANCE LIMITATION CURVES

NAME: LED Strip	TYPE: Indoor lighting	WEIGHT: 75g
SPEC.: 2835 080LED	DIM.: 500*12*4.5MM	SERIAL No.: 20231004150
MFR.: EVERFINE	SUR.: 500*12MM	Shielding Angle:



LUMINANCE cd/ (m2)		
G (DEG)	C0/180	C90/270
85	4554	5116
80	5813	6282
75	6732	7172
70	7309	7733
65	7688	8109
60	7918	8284
55	8027	8362
50	8081	8377
45	8100	8353

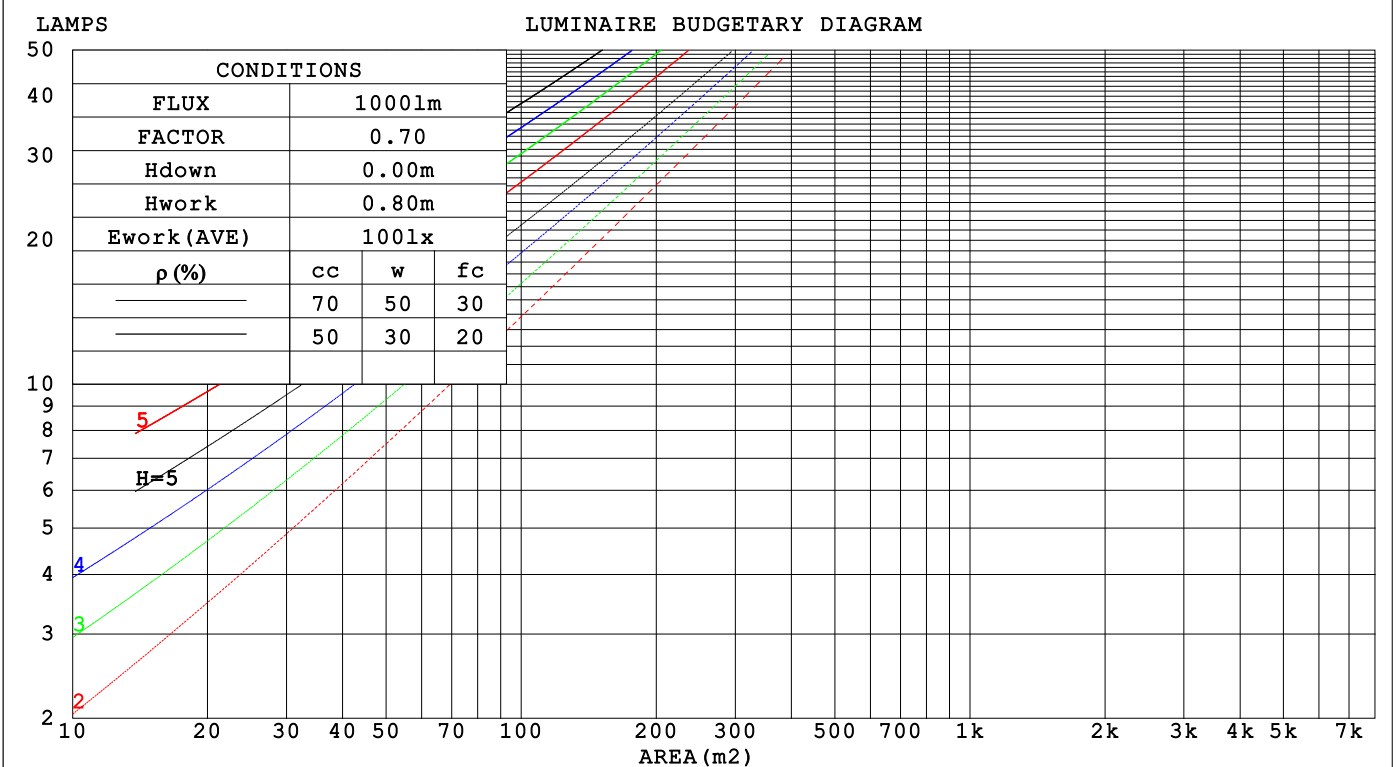
C Range: 0 - 360DEG
 C Interval: 15.0DEG
 Test Speed: HIGH
 Temperature: 25.3°C
 Operators: DAMIN
 Test Date: 2023-10-21

γ Range: 0 - 180DEG
 γ Interval: 1.0DEG
 Test System: EVERFINE GO-2000B_V1 SYSTEM V2.00.471
 Humidity: 65.0%
 Test Distance: 4.880m [K=1.0000]
 Remarks:

CU AND LUMINAIRE BUDGETARY ESTIMATE DIAGRAM

NAME: LED Strip	TYPE: Indoor lighting	WEIGHT: 75g
SPEC.: 2835 080LED	DIM.: 500*12*4.5MM	SERIAL No.: 20231004150
MFR.: EVERFINE	SUR.: 500*12MM	Shielding Angle:

pcc	80%			70%			50%			30%			10%			0
	50%	30%	10%	50%	30%	10%	50%	30%	10%	50%	30%	10%	50%	30%	10%	0
p _w	0															
p _{fc}	0															
RCR	RCR:Room Cavity Ratio															
	Coefficients of Utilization(CU)															
0.0	1.19	1.19	1.19	1.16	1.16	1.16	1.10	1.10	1.10	1.05	1.05	1.05	1.01	1.01	1.01	.99
1.0	1.03	.99	.95	1.01	.97	.93	.96	.93	.90	.92	.89	.87	.88	.86	.84	.82
2.0	.89	.82	.76	.87	.81	.75	.84	.78	.73	.80	.76	.72	.77	.73	.70	.67
3.0	.78	.70	.63	.76	.69	.62	.73	.67	.61	.70	.65	.60	.67	.63	.59	.56
4.0	.69	.60	.53	.67	.59	.53	.65	.57	.52	.62	.56	.51	.60	.54	.50	.48
5.0	.61	.52	.45	.60	.51	.45	.58	.50	.44	.56	.49	.44	.54	.48	.43	.41
6.0	.55	.46	.39	.54	.45	.39	.52	.44	.39	.50	.43	.38	.49	.42	.38	.36
7.0	.50	.41	.35	.49	.40	.34	.47	.40	.34	.46	.39	.34	.44	.38	.33	.31
8.0	.45	.37	.31	.45	.36	.31	.43	.36	.30	.42	.35	.30	.40	.34	.30	.28
9.0	.42	.33	.28	.41	.33	.27	.40	.32	.27	.38	.32	.27	.37	.31	.27	.25
10.0	.38	.30	.25	.38	.30	.25	.37	.29	.25	.36	.29	.24	.35	.29	.24	.22



C Range: 0 - 360DEG
 C Interval: 15.0DEG
 Test Speed: HIGH
 Temperature: 25.3°C
 Operators: DAMIN
 Test Date: 2023-10-21

γ Range: 0 - 180DEG
 γ Interval: 1.0DEG
 Test System: EVERFINE GO-2000B_V1 SYSTEM V2.00.471
 Humidity: 65.0%
 Test Distance: 4.880m [K=1.0000]
 Remarks:

WEC AND CCEC

NAME: LED Strip	TYPE: Indoor lighting	WEIGHT: 75g
SPEC.: 2835 080LED	DIM.: 500*12*4.5MM	SERIAL No.: 20231004150
MFR.: EVERFINE	SUR.: 500*12MM	Shielding Angle:

ρ_{cc}	80%			70%			50%			30%			10%			0
ρ_w	50%	30%	10%	50%	30%	10%	50%	30%	10%	50%	30%	10%	50%	30%	10%	0
ρ_{fc}	20%			20%			20%			20%			20%			0
RCR	RCR:Room Cavity Ratio						Wall Exitance Coefficients(WEC)									
0.0																
1.0	.318	.181	.057	.311	.177	.056	.297	.170	.054	.284	.164	.052	.272	.157	.051	
2.0	.299	.164	.050	.292	.161	.050	.280	.155	.048	.268	.150	.047	.257	.146	.046	
3.0	.276	.147	.044	.270	.145	.044	.259	.140	.043	.249	.136	.042	.239	.132	.041	
4.0	.254	.132	.039	.249	.130	.038	.239	.127	.038	.230	.123	.037	.221	.120	.037	
5.0	.234	.119	.035	.230	.118	.034	.221	.115	.034	.213	.112	.033	.205	.110	.033	
6.0	.217	.109	.031	.213	.108	.031	.205	.105	.031	.198	.103	.030	.191	.100	.030	
7.0	.202	.100	.028	.198	.099	.028	.191	.097	.028	.184	.095	.028	.178	.093	.027	
8.0	.188	.092	.026	.185	.091	.026	.179	.089	.025	.173	.087	.025	.167	.086	.025	
9.0	.176	.085	.024	.173	.084	.024	.167	.083	.023	.162	.081	.023	.157	.080	.023	
10.0	.165	.079	.022	.163	.079	.022	.158	.077	.022	.153	.076	.022	.148	.074	.021	

ρ_{cc}	80%			70%			50%			30%			10%			0
ρ_w	50%	30%	10%	50%	30%	10%	50%	30%	10%	50%	30%	10%	50%	30%	10%	0
ρ_{fc}	20%			20%			20%			20%			20%			0
RCR	RCR:Room Cavity Ratio						Ceiling Cavity Exitance Coefficients(CCEC)									
0.0																
1.0	.201	.201	.201	.172	.172	.172	.117	.117	.117	.067	.067	.067	.022	.022	.022	
2.0	.184	.142	.108	.157	.123	.093	.108	.085	.065	.062	.049	.038	.020	.016	.012	
3.0	.176	.125	.084	.151	.108	.073	.104	.075	.051	.060	.044	.030	.019	.014	.010	
4.0	.169	.112	.068	.145	.097	.059	.100	.067	.042	.058	.039	.025	.019	.013	.008	
5.0	.161	.102	.057	.139	.088	.050	.095	.061	.035	.055	.036	.021	.018	.012	.007	
6.0	.154	.093	.049	.133	.081	.043	.091	.057	.030	.053	.033	.018	.017	.011	.006	
7.0	.147	.086	.044	.127	.075	.038	.088	.052	.027	.051	.031	.016	.016	.010	.005	
8.0	.141	.081	.039	.121	.070	.034	.084	.049	.024	.049	.029	.014	.016	.009	.005	
9.0	.135	.076	.036	.116	.066	.031	.080	.046	.022	.047	.027	.013	.015	.009	.004	
10.0	.129	.071	.033	.111	.062	.029	.077	.044	.021	.045	.026	.012	.015	.008	.004	

C Range: 0 - 360DEG
 C Interval: 15.0DEG
 Test Speed: HIGH
 Temperature:25.3°C
 Operators:DAMIN
 Test Date:2023-10-21

γ Range: 0 - 180DEG
 γ Interval: 1.0DEG
 Test System:EVERFINE GO-2000B_V1 SYSTEM V2.00.471
 Humidity:65.0%
 Test Distance:4.880m [K=1.0000]
 Remarks:

UGR(Unified Glare Rating) Table

NAME: LED Strip		TYPE: Indoor lighting					WEIGHT: 75g				
SPEC.: 2835 080LED		DIM.: 500*12*4.5MM					SERIAL No.: 20231004150				
MFR.: EVERFINE		SUR.: 500*12MM					Shielding Angle:				
ceiling/cavity		0.7	0.7	0.5	0.5	0.3	0.7	0.7	0.5	0.5	0.3
walls		0.5	0.3	0.5	0.3	0.3	0.5	0.3	0.5	0.3	0.3
working plane		0.2	0.2	0.2	0.2	0.2	0.2	0.2	0.2	0.2	0.2
Room dimensions		Viewed crosswise					Viewed endwise				
x = 2H y = 2H		24.3	25.9	24.6	26.1	26.3	24.5	26.1	24.8	26.3	26.5
	3H	25.9	27.3	26.2	27.6	27.9	26.2	27.6	26.5	27.9	28.1
	4H	26.5	27.9	26.9	28.2	28.5	26.8	28.2	27.2	28.4	28.7
	6H	27.0	28.2	27.3	28.5	28.8	27.3	28.5	27.6	28.8	29.1
	8H	27.1	28.3	27.4	28.6	28.9	27.4	28.6	27.7	28.9	29.2
	12H	27.1	28.3	27.5	28.6	29.0	27.4	28.6	27.8	29.0	29.3
	4H	25.0	26.4	25.4	26.6	26.9	25.2	26.5	25.5	26.8	27.1
	3H	26.8	28.0	27.2	28.3	28.6	27.0	28.2	27.4	28.5	28.8
	4H	27.5	28.6	27.9	28.9	29.3	27.8	28.8	28.2	29.2	29.5
	6H	28.1	29.0	28.5	29.4	29.8	28.3	29.3	28.7	29.7	30.1
	8H	28.2	29.1	28.7	29.5	29.9	28.5	29.4	28.9	29.8	30.2
	12H	28.3	29.1	28.8	29.5	30.0	28.6	29.4	29.1	29.8	30.3
	8H	27.8	28.7	28.2	29.1	29.5	28.0	28.9	28.5	29.3	29.7
	6H	28.5	29.2	29.0	29.7	30.1	28.7	29.5	29.2	29.9	30.4
	8H	28.7	29.4	29.2	29.8	30.3	29.0	29.7	29.5	30.1	30.6
	12H	28.9	29.5	29.4	29.9	30.4	29.2	29.8	29.7	30.2	30.7
	12H	27.8	28.6	28.3	29.1	29.5	28.0	28.9	28.5	29.3	29.7
	6H	28.6	29.2	29.0	29.7	30.1	28.8	29.4	29.3	29.9	30.4
	8H	28.8	29.4	29.3	29.9	30.4	29.1	29.7	29.6	30.1	30.6
Variations with the observer position at spacings(CIE Pub.117):											
S = 1.0H		+ 0.1 / - 0.2					+ 0.1 / - 0.2				
1.5H		+ 0.2 / - 0.3					+ 0.2 / - 0.3				
2.0H		+ 0.2 / - 0.4					+ 0.2 / - 0.4				

CIE Pub.117, 303.4 lm Total Lamp Luminous Flux Correct (8log(F/F0) = -4.1)
 Area: 0.012 m2

C Range: 0 - 360DEG
 C Interval: 15.0DEG
 Test Speed: HIGH
 Temperature:25.3°C
 Operators:DAMIN
 Test Date:2023-10-21

γ Range: 0 - 180DEG
 γ Interval: 1.0DEG
 Test System:EVERFINE GO-2000B_V1 SYSTEM V2.00.471
 Humidity:65.0%
 Test Distance:4.880m [K=1.0000]
 Remarks:

UTILIZATION FACTORS TABLE

NAME: LED Strip	TYPE: Indoor lighting	WEIGHT: 75g
SPEC.: 2835 080LED	DIM.: 500*12*4.5MM	SERIAL No.: 20231004150
MFR.: EVERFINE	SUR.: 500*12MM	Shielding Angle:

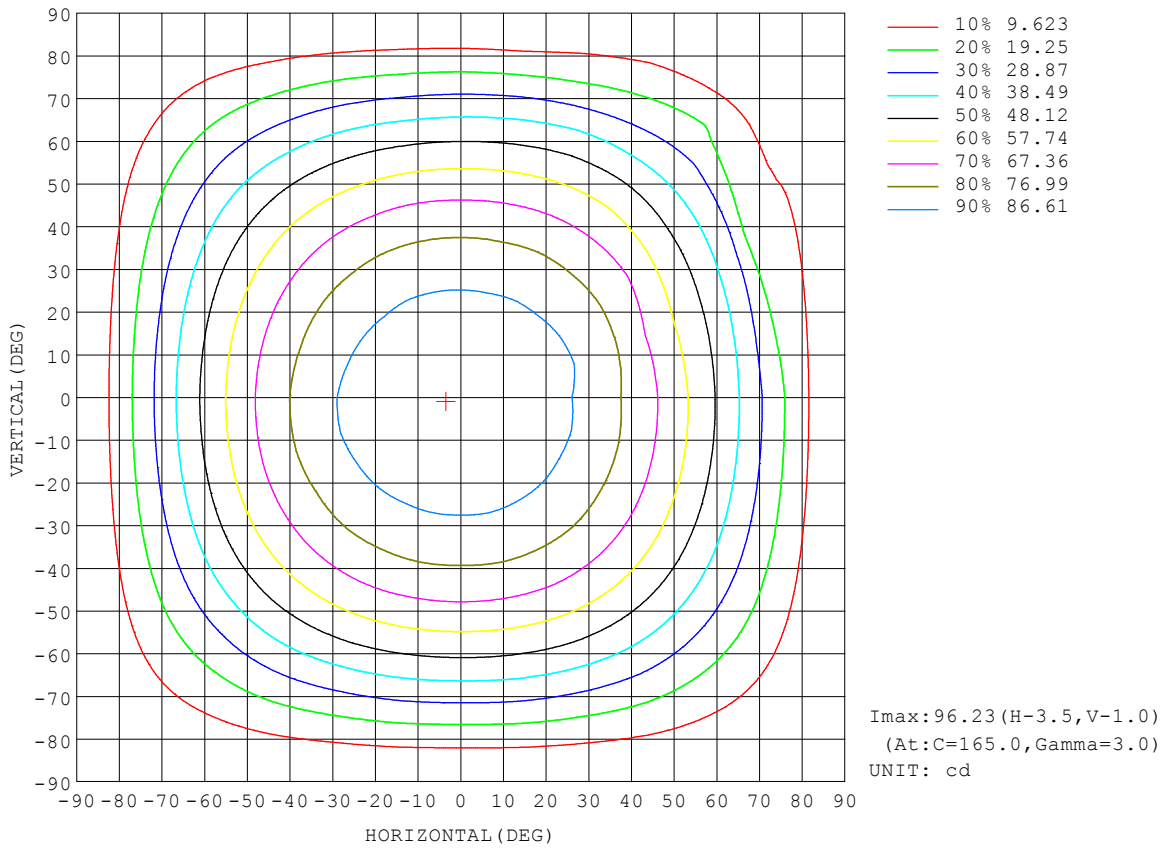
REFLECTANCE										
Ceiling	0.8	0.8	0.8	0.7	0.7	0.7	0.5	0.5	0.5	0
Walls	0.7	0.5	0.3	0.7	0.5	0.3	0.7	0.5	0.3	0
Working plane	0.2	0.2	0.2	0.2	0.2	0.2	0.2	0.2	0.2	0
ROOM INDEX	UTILIZATION FACTORS (PERCENT) $k(RI) \times RCR = 5$									
$k = 0.60$	56	44	37	55	44	37	54	43	36	30
0.80	66	54	46	65	53	46	63	52	46	38
1.00	74	63	55	73	62	55	71	64	54	47
1.25	81	71	63	80	70	63	77	68	62	54
1.50	87	76	69	85	75	69	82	73	67	59
2.00	94	85	78	92	84	77	88	81	76	67
2.50	98	90	83	96	88	82	91	85	80	72
3.00	101	94	88	99	92	87	95	89	85	76
4.00	105	99	95	103	98	93	98	94	90	81
5.00	108	103	99	105	101	97	101	97	94	84
ROOM INDEX	UF(total)									Direct
According to DIN EN 13032-2 2004			Suspended				SHRNOM = 1.25			

C Range: 0 - 360DEG
 C Interval: 15.0DEG
 Test Speed: HIGH
 Temperature: 25.3°C
 Operators: DAMIN
 Test Date: 2023-10-21

γ Range: 0 - 180DEG
 γ Interval: 1.0DEG
 Test System: EVERFINE GO-2000B_V1 SYSTEM V2.00.471
 Humidity: 65.0%
 Test Distance: 4.880m [K=1.0000]
 Remarks:

ISOCANDELA DIAGRAM

NAME: LED Strip	TYPE: Indoor lighting	WEIGHT: 75g
SPEC.: 2835 080LED	DIM.: 500*12*4.5MM	SERIAL No.: 20231004150
MFR.: EVERFINE	SUR.: 500*12MM	Shielding Angle:

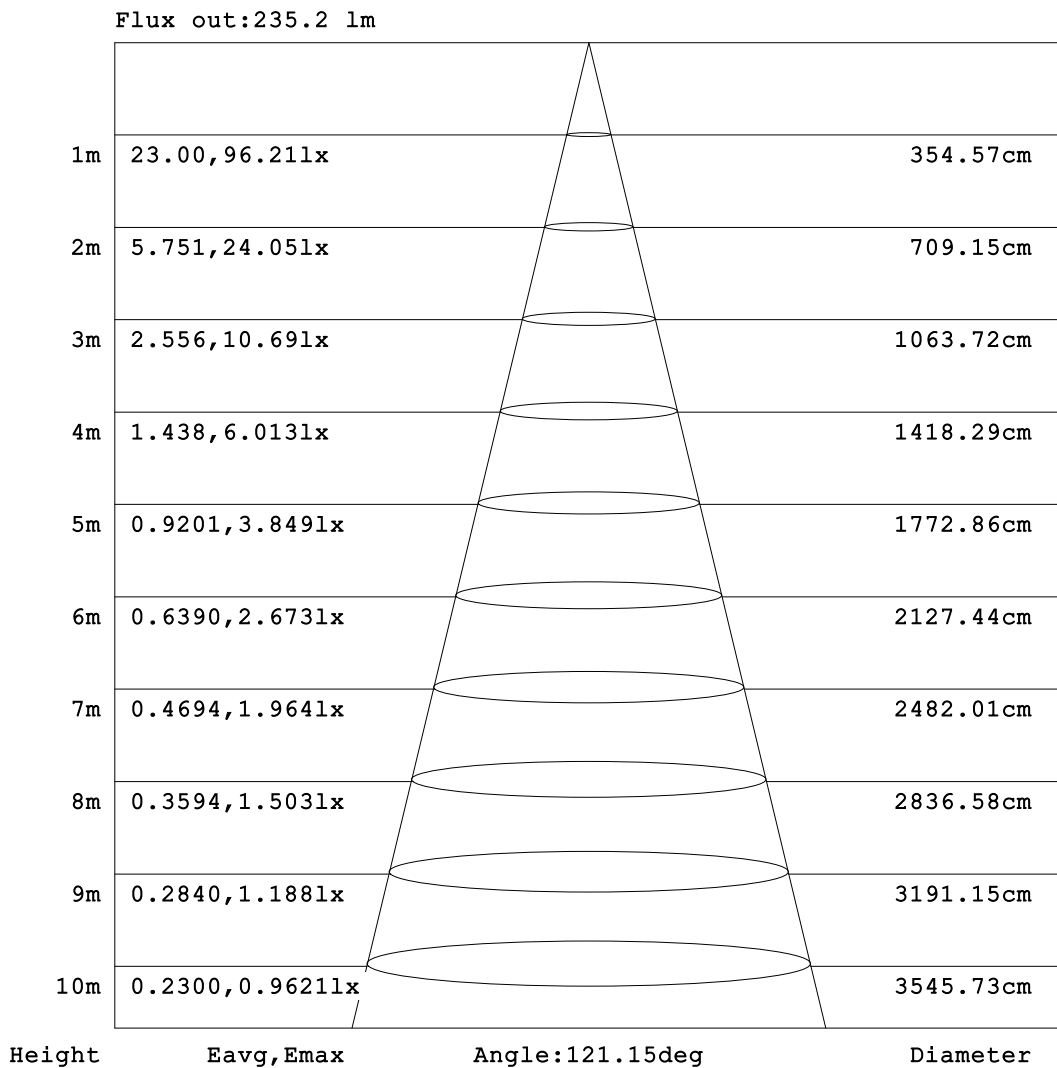


C Range: 0 - 360DEG
 C Interval: 15.0DEG
 Test Speed: HIGH
 Temperature: 25.3°C
 Operators: DAMIN
 Test Date: 2023-10-21

γ Range: 0 - 180DEG
 γ Interval: 1.0DEG
 Test System: EVERFINE GO-2000B_V1 SYSTEM V2.00.471
 Humidity: 65.0%
 Test Distance: 4.880m [K=1.0000]
 Remarks:

AAI Figure

NAME: LED Strip	TYPE: Indoor lighting	WEIGHT: 75g
SPEC.: 2835 080LED	DIM.: 500*12*4.5MM	SERIAL No.: 20231004150
MFR.: EVERFINE	SUR.: 500*12MM	Shielding Angle:



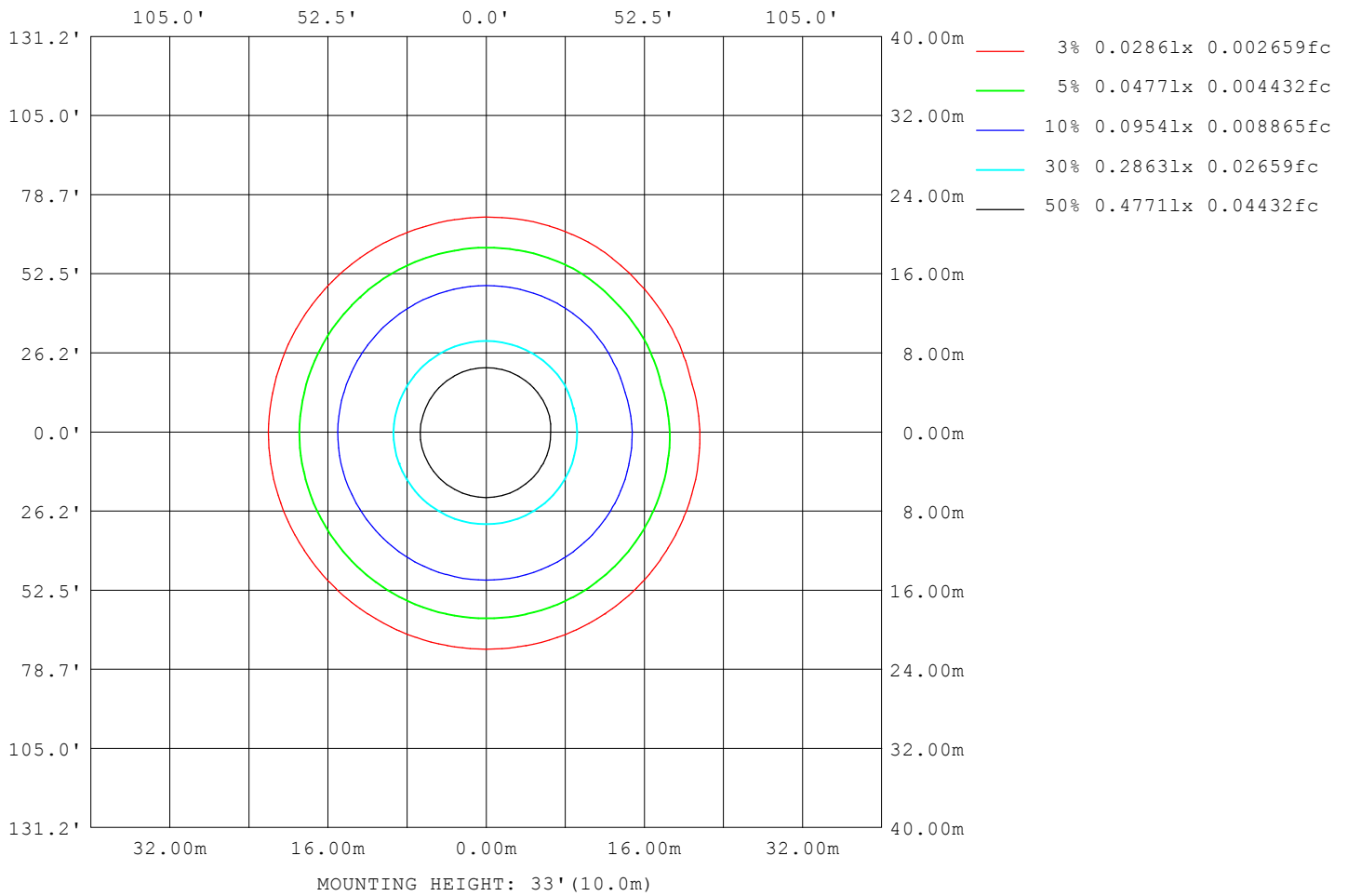
Note: The Curves indicate the illuminated area and the average illumination when the luminaire is at different distance.

C Range: 0 - 360DEG
 C Interval: 15.0DEG
 Test Speed: HIGH
 Temperature: 25.3°C
 Operators: DAMIN
 Test Date: 2023-10-21

γ Range: 0 - 180DEG
 γ Interval: 1.0DEG
 Test System: EVERFINE GO-2000B_V1 SYSTEM V2.00.471
 Humidity: 65.0%
 Test Distance: 4.880m [K=1.0000]
 Remarks:

ISOLUX DIAGRAM

NAME: LED Strip	TYPE: Indoor lighting	WEIGHT: 75g
SPEC.: 2835 080LED	DIM.: 500*12*4.5MM	SERIAL No.: 20231004150
MFR.: EVERFINE	SUR.: 500*12MM	Shielding Angle:



C Range: 0 - 360DEG
 C Interval: 15.0DEG
 Test Speed: HIGH
 Temperature: 25.3°C
 Operators: DAMIN
 Test Date: 2023-10-21

γ Range: 0 - 180DEG
 γ Interval: 1.0DEG
 Test System: EVERFINE GO-2000B_V1 SYSTEM V2.00.471
 Humidity: 65.0%
 Test Distance: 4.880m [K=1.0000]
 Remarks:

LED Avg.L Report

NAME: LED Strip	TYPE: Indoor lighting	WEIGHT: 75g
SPEC.: 2835 080LED	DIM.: 500*12*4.5MM	SERIAL No.: 20231004150
MFR.: EVERFINE	SUR.: 500*12MM	Shielding Angle:

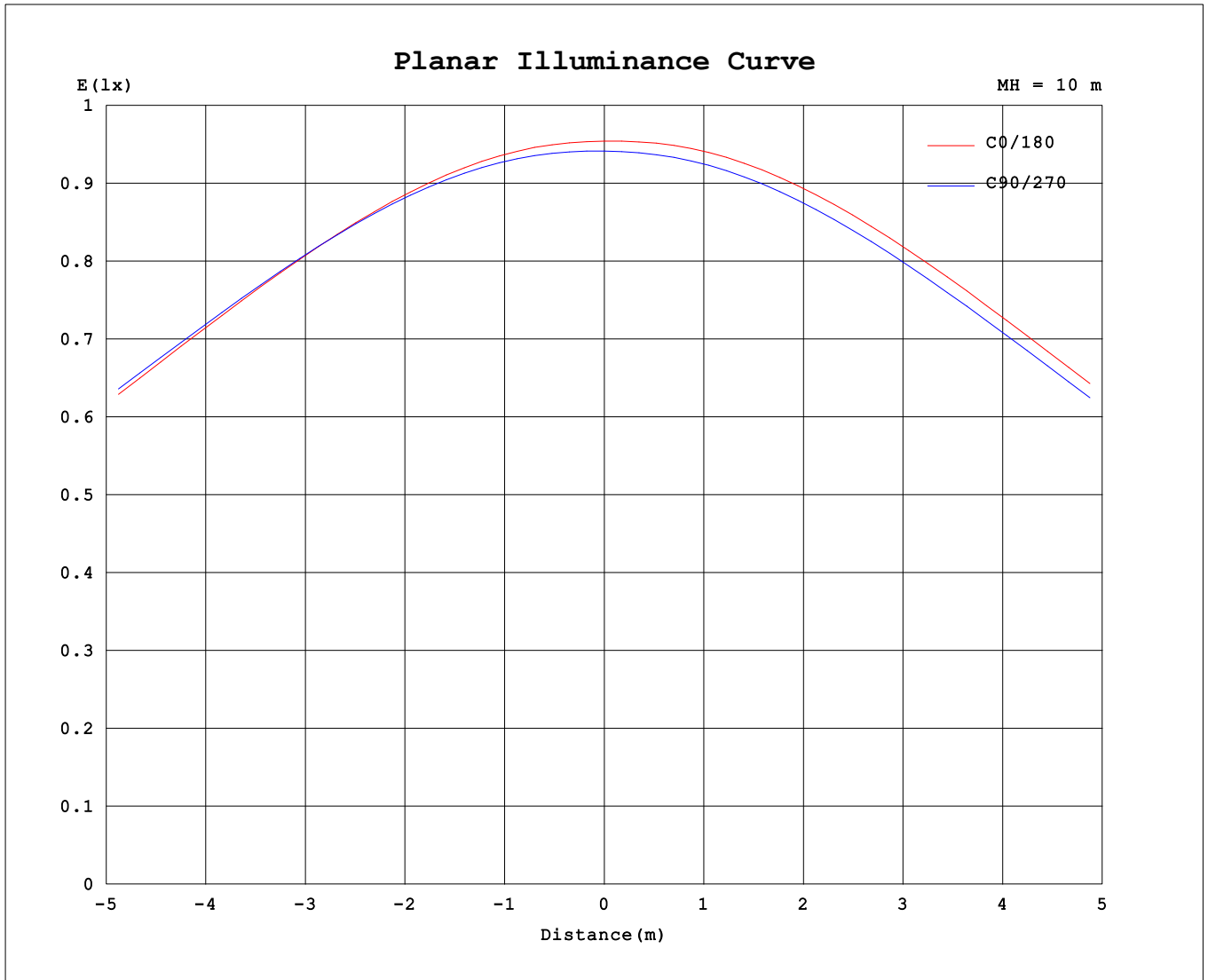
AvgL	cd/m2
L_0~180 (65) av	7932
L_0~180 (75) av	7056
L_0~180 (85) av	5053
L_90~270 (65) av	7957
L_90~270 (75) av	7051
L_90~270 (85) av	4970
L_45 (65) av	7907
L_45 (75) av	7051
L_45 (85) av	4923

Standard: GB/T 29293-2012

C Range: 0 - 360DEG
 C Interval: 15.0DEG
 Test Speed: HIGH
 Temperature:25.3°C
 Operators:DAMIN
 Test Date:2023-10-21

γ Range: 0 - 180DEG
 γ Interval: 1.0DEG
 Test System:EVERFINE GO-2000B_V1 SYSTEM V2.00.471
 Humidity:65.0%
 Test Distance:4.880m [K=1.0000]
 Remarks:

Planar Illuminance Curve



C Range: 0 - 360DEG
 C Interval: 15.0DEG
 Test Speed: HIGH
 Temperature: 25.3°C
 Operators: DAMIN
 Test Date: 2023-10-21

γ Range: 0 - 180DEG
 γ Interval: 1.0DEG
 Test System: EVERFINE GO-2000B_V1 SYSTEM V2.00.471
 Humidity: 65.0%
 Test Distance: 4.880m [K=1.0000]
 Remarks:

LUMINOUS DISTRIBUTION INTENSITY DATA

NAME: LED Strip	TYPE: Indoor lighting	WEIGHT: 75g
SPEC.: 2835 080LED	DIM.: 500*12*4.5MM	SERIAL No.: 20231004150
MFR.: EVERFINE	SUR.: 500*12MM	Shielding Angle:

Table--1

UNIT: cd

C (DEG) \ γ (DEG)	0	15	30	45	60	75	90	105	120	135	150	165	180	195	210	225	240	255	270
0	95.4	95.2	94.5	94.4	94.4	94.3	94.1	94.2	94.4	94.7	95.4	96.2	95.4	95.2	94.5	94.4	94.4	94.3	94.1
5	95.2	95.2	94.5	94.4	94.4	94.4	94.2	94.3	94.5	94.8	95.4	96.3	95.6	95.2	94.5	94.3	94.3	94.1	93.9
10	94.3	94.4	93.8	93.9	93.9	93.9	93.7	93.8	94.0	94.3	94.8	95.5	95.0	94.5	93.8	93.5	93.5	93.3	93.1
15	92.6	92.9	92.5	92.6	92.6	92.7	92.5	92.6	92.8	93.1	93.5	94.1	93.8	93.0	92.4	92.0	92.0	91.7	91.6
20	90.3	90.7	90.5	90.6	90.7	90.8	90.7	90.7	90.9	91.2	91.5	92.1	91.8	90.9	90.3	89.9	89.9	89.6	89.4
25	87.3	87.9	87.8	88.1	88.1	88.3	88.2	88.3	88.4	88.7	88.9	89.4	89.2	88.2	87.6	87.1	87.1	86.8	86.7
30	83.7	84.4	84.5	84.8	84.9	85.1	85.0	85.1	85.2	85.5	85.6	86.1	85.8	84.8	84.3	83.7	83.6	83.4	83.3
35	79.4	80.2	80.5	80.9	81.0	81.2	81.0	81.2	81.2	81.5	81.5	82.0	81.8	80.8	80.2	79.6	79.5	79.3	79.2
40	74.4	75.3	75.6	76.2	76.4	76.6	76.3	76.6	76.5	76.8	76.7	77.2	77.0	76.0	75.5	74.9	74.8	74.5	74.5
45	68.7	69.4	70.1	70.5	70.9	70.9	70.9	70.9	71.1	71.1	71.2	71.4	71.2	70.5	69.8	69.4	69.0	69.0	68.7
50	62.3	63.0	63.7	64.3	64.7	64.7	64.6	64.6	64.8	64.8	64.8	65.1	64.9	64.2	63.5	63.1	62.7	62.7	62.5
55	55.2	55.9	56.6	57.2	57.7	57.7	57.6	57.6	57.7	57.6	57.7	57.9	57.8	57.2	56.5	56.1	55.7	55.6	55.6
60	47.5	48.1	48.7	49.4	49.9	49.9	49.7	49.7	49.7	49.7	49.8	50.0	50.0	49.4	48.8	48.3	48.0	47.8	48.0
65	39.0	39.6	40.2	40.8	41.3	41.2	41.1	41.1	41.1	41.0	41.2	41.3	41.5	40.9	40.4	39.9	39.6	39.3	39.6
70	30.0	30.7	31.0	31.7	31.9	32.2	31.7	32.0	31.7	31.9	31.7	32.2	32.3	31.7	31.4	30.8	30.7	30.4	30.7
75	20.9	21.5	21.7	22.3	22.4	22.7	22.3	22.5	22.2	22.4	22.2	22.7	22.9	22.4	22.2	21.7	21.5	21.3	21.5
80	12.1	12.6	12.7	13.2	13.2	13.4	13.1	13.2	13.0	13.1	13.0	13.4	13.7	13.3	13.2	12.7	12.7	12.4	12.6
85	4.76	5.12	5.19	5.55	5.49	5.61	5.35	5.56	5.34	5.44	5.29	5.65	5.81	5.48	5.48	5.20	5.25	5.07	5.04
90	0.76	0.83	0.84	0.97	0.92	0.93	0.67	0.95	0.91	0.96	0.98	1.22	0.98	0.89	0.91	0.81	0.83	0.73	0.63
95	0.44	0.43	0.45	0.42	0.37	0.34	0.34	0.37	0.41	0.45	0.58	0.82	0.40	0.43	0.41	0.39	0.37	0.38	0.37
100	0.38	0.37	0.36	0.36	0.35	0.36	0.34	0.36	0.38	0.42	0.50	0.77	0.36	0.36	0.38	0.37	0.39	0.38	0.40
105	0.40	0.41	0.39	0.40	0.39	0.41	0.40	0.40	0.38	0.43	0.50	0.74	0.42	0.41	0.43	0.43	0.45	0.44	0.46
110	0.46	0.47	0.45	0.46	0.45	0.46	0.46	0.46	0.44	0.46	0.51	0.68	0.48	0.47	0.49	0.49	0.51	0.51	0.53
115	0.52	0.53	0.51	0.52	0.51	0.53	0.52	0.52	0.50	0.51	0.51	0.64	0.54	0.53	0.55	0.55	0.57	0.58	0.59
120	0.58	0.58	0.57	0.58	0.57	0.59	0.58	0.58	0.56	0.57	0.56	0.60	0.60	0.59	0.61	0.62	0.63	0.63	0.66
125	0.64	0.64	0.63	0.64	0.63	0.65	0.64	0.64	0.62	0.63	0.62	0.62	0.65	0.65	0.67	0.67	0.69	0.69	0.71
130	0.70	0.71	0.69	0.70	0.69	0.70	0.70	0.70	0.68	0.69	0.67	0.68	0.71	0.71	0.73	0.73	0.75	0.75	0.77
135	0.75	0.76	0.75	0.76	0.75	0.76	0.75	0.76	0.74	0.75	0.74	0.74	0.77	0.77	0.79	0.79	0.81	0.81	0.83
140	0.81	0.82	0.81	0.82	0.81	0.82	0.81	0.82	0.80	0.81	0.80	0.80	0.82	0.82	0.84	0.84	0.86	0.86	0.88
145	0.87	0.88	0.87	0.88	0.87	0.88	0.87	0.87	0.86	0.87	0.85	0.86	0.88	0.87	0.89	0.89	0.91	0.91	0.93
150	0.92	0.94	0.93	0.93	0.92	0.93	0.92	0.93	0.92	0.93	0.91	0.93	0.93	0.92	0.94	0.94	0.96	0.96	0.97
155	0.97	0.99	0.98	0.98	0.97	0.98	0.97	0.98	0.97	0.98	0.98	1.01	0.98	0.97	0.99	0.99	1.00	1.00	1.02
160	1.03	1.04	1.02	1.03	1.01	1.03	1.01	1.03	1.02	1.04	1.03	1.07	1.03	1.01	1.03	1.03	1.05	1.04	1.06
165	1.07	1.08	1.07	1.07	1.05	1.07	1.06	1.07	1.07	1.08	1.09	1.14	1.08	1.06	1.07	1.07	1.08	1.08	1.09
170	1.11	1.12	1.10	1.11	1.09	1.11	1.10	1.11	1.11	1.13	1.15	1.21	1.12	1.09	1.11	1.10	1.12	1.11	1.12
175	1.14	1.15	1.13	1.14	1.13	1.14	1.13	1.14	1.14	1.17	1.19	1.28	1.15	1.13	1.14	1.13	1.14	1.13	1.15
180	1.16	1.16	1.15	1.15	1.15	1.15	1.15	1.15	1.17	1.18	1.23	1.35	1.16	1.15	1.15	1.15	1.15	1.15	1.15

C Range: 0 - 360DEG
 C Interval: 15.0DEG
 Test Speed: HIGH
 Temperature: 25.3°C
 Operators: DAMIN
 Test Date: 2023-10-21

γ Range: 0 - 180DEG
 γ Interval: 1.0DEG
 Test System: EVERFINE GO-2000B_V1 SYSTEM V2.00.471
 Humidity: 65.0%
 Test Distance: 4.880m [K=1.0000]
 Remarks:

LUMINOUS DISTRIBUTION INTENSITY DATA

NAME: LED Strip	TYPE: Indoor lighting	WEIGHT: 75g
SPEC.: 2835 080LED	DIM.: 500*12*4.5MM	SERIAL No.: 20231004150
MFR.: EVERFINE	SUR.: 500*12MM	Shielding Angle:

Table--2

UNIT: cd

C (DEG) \ γ (DEG)	285	300	315	330	345														
0	94.2	94.4	94.7	95.4	96.2														
5	94.0	94.2	94.5	95.2	96.1														
10	93.1	93.4	93.7	94.4	95.2														
15	91.6	91.9	92.2	92.9	93.6														
20	89.4	89.8	90.0	90.7	91.4														
25	86.7	87.1	87.3	87.9	88.4														
30	83.3	83.7	83.9	84.4	84.8														
35	79.2	79.7	79.8	80.3	80.5														
40	74.4	75.0	75.0	75.5	74.3														
45	69.0	69.3	69.5	69.7	67.5														
50	62.8	63.2	63.2	63.4	61.3														
55	55.9	56.2	56.3	54.5	53.5														
60	48.3	48.6	48.1	47.0	45.7														
65	40.0	40.2	38.7	38.1	37.2														
70	30.9	30.0	29.7	29.9	24.6														
75	20.9	20.6	21.2	20.7	10.2														
80	11.8	12.2	12.3	11.3	9.10														
85	4.54	5.10	4.40	3.45	5.18														
90	0.75	1.00	0.97	1.05	0.98														
95	0.38	0.39	0.44	0.46	0.52														
100	0.39	0.40	0.40	0.42	0.48														
105	0.44	0.45	0.44	0.47	0.50														
110	0.51	0.52	0.51	0.53	0.58														
115	0.58	0.58	0.57	0.59	0.64														
120	0.64	0.64	0.63	0.66	0.71														
125	0.69	0.70	0.69	0.72	0.78														
130	0.76	0.76	0.75	0.78	0.85														
135	0.81	0.82	0.81	0.84	0.91														
140	0.87	0.87	0.87	0.90	0.97														
145	0.91	0.92	0.92	0.95	1.03														
150	0.96	0.97	0.97	1.00	1.10														
155	1.01	1.02	1.01	1.05	1.17														
160	1.05	1.06	1.06	1.10	1.23														
165	1.08	1.09	1.09	1.16	1.28														
170	1.11	1.13	1.14	1.19	1.32														
175	1.13	1.15	1.17	1.21	1.35														
180	1.15	1.17	1.19	1.22	1.36														

C Range: 0 - 360DEG
 C Interval: 15.0DEG
 Test Speed: HIGH
 Temperature:25.3°C
 Operators:DAMIN
 Test Date:2023-10-21

γ Range: 0 - 180DEG
 γ Interval: 1.0DEG
 Test System:EVERFINE GO-2000B_V1 SYSTEM V2.00.471
 Humidity:65.0%
 Test Distance:4.880m [K=1.0000]
 Remarks: