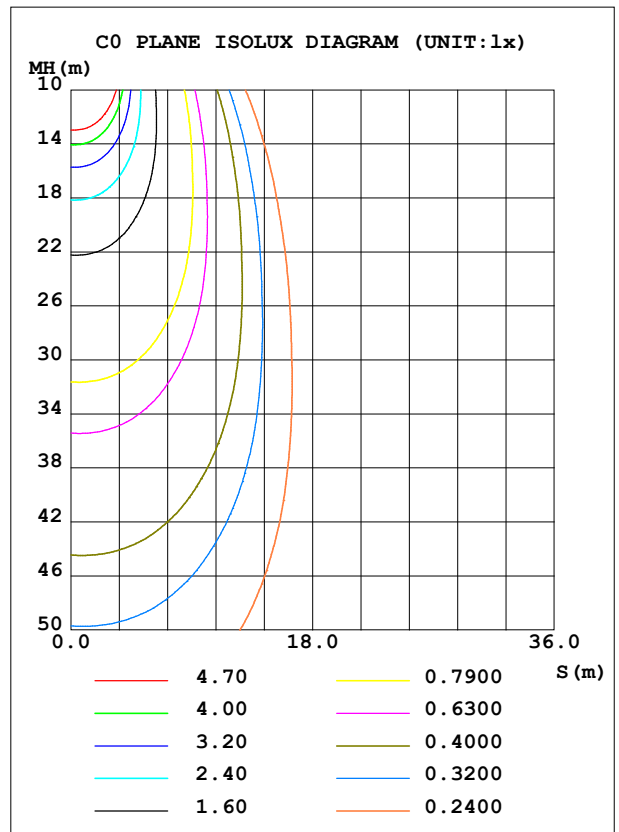
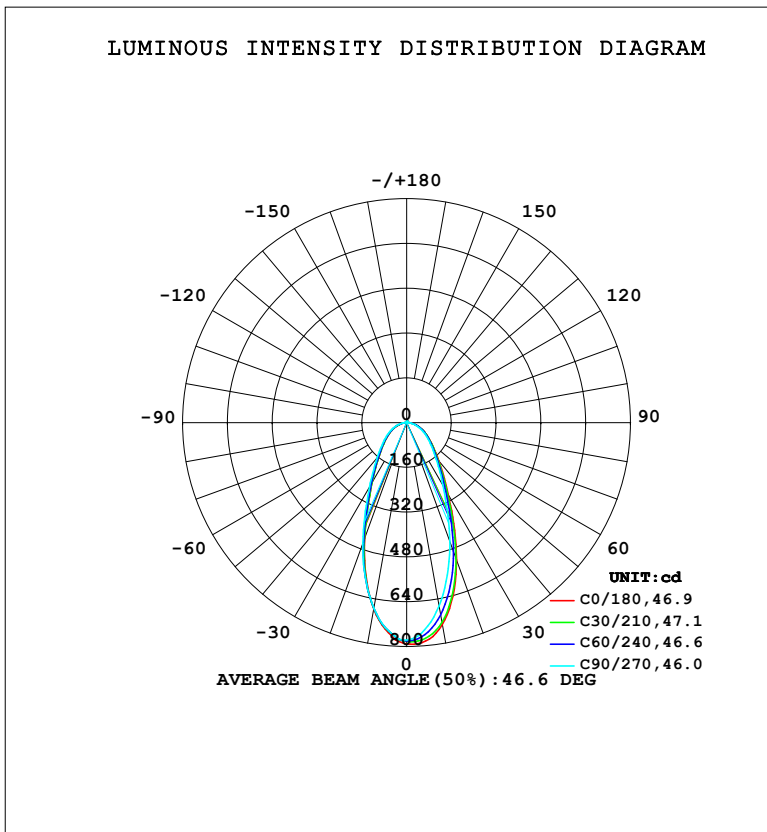


LUMINAIRE PHOTOMETRIC TEST REPORT

NAME: LED Strip	TYPE: Indoor lighting	WEIGHT: 75g
SPEC.: LED	DIM.: 500*10*5MM	SERIAL No.: 20240326002
MFR.: EVERFINE	SUR.: 500*10MM	Shielding Angle:

DATA OF LAMP		PHOTOMETRIC DATA			
MODEL: 2000B-24 (WCP) -UR-CV-EP-LD		Imax (cd)	795.0	S/MH (C0/180)	0.69
NOMINAL POWER (W)	7.03151	LOR (%)	100.0	S/MH (C90/270)	0.72
RATED VOLTAGE (V)	DC 24V	TOTAL FLUX (lm)	825.19	η UP, DN (C0-180)	0.7, 49.2
NOMINAL FLUX (lm)	825.186	CIE CLASS	DIRECT	η UP, DN (C180-360)	0.8, 49.4
LAMPS INSIDE	1	η up (%)	1.5	CIBSE SHR NOM	0.75
TEST VOLTAGE (V)	DC 24V	η down (%)	98.5	CIBSE SHR MAX	0.80



C Range: 0 - 360DEG
 C Interval: 5.0DEG
 Test Speed: HIGH
 Temperature: 25.3°C
 Operators: DAMIN
 Test Date: 2024-03-27

γ Range: 0 - 180DEG
 γ Interval: 1.0DEG
 Test System: EVERFINE GO-2000B_V1 SYSTEM V2.00.471
 Humidity: 65.0%
 Test Distance: 4.880m [K=1.0000]
 Remarks:

ZONAL FLUX DIAGRAM

ZONAL FLUX DIAGRAM:

γ	C0	C45	C90	C135	C180	C225	C270	C315	γ	Φ zone	Φ total	%lum,lamp
10	732.9	709.9	665.4	652.1	676.7	678.5	673.8	700.1	0- 10	69.96	69.96	8.48,8.48
20	521.4	504.3	451.8	429.2	440.3	446.8	459.7	492.9	10- 20	161.9	231.8	28.1,28.1
30	298.9	286.6	261.4	248.5	248.8	248.8	266.2	288.4	20- 30	163.8	395.6	47.9,47.9
40	179.6	173.3	161.3	152.4	152.4	152.4	164.0	175.5	30- 40	131.3	526.8	63.8,63.8
50	116.7	114.4	107.6	100.9	101.0	102.2	109.8	115.5	40- 50	103.1	629.9	76.3,76.3
60	78.77	78.26	72.27	67.98	67.41	69.08	73.98	79.03	50- 60	80.48	710.4	86.1,86.1
70	49.54	49.23	43.68	41.05	39.55	41.19	45.37	49.80	60- 70	58.26	768.6	93.1,93.1
80	23.21	22.65	18.34	16.37	15.14	16.21	19.81	23.23	70- 80	33.51	802.2	97.2,97.2
90	4.148	3.582	1.267	1.823	1.444	1.607	1.864	4.116	80- 90	10.76	812.9	98.5,98.5
100	0.8218	0.9068	0.6005	1.029	0.9268	0.9636	0.6381	0.9138	90-100	1.320	814.2	98.7,98.7
110	0.9763	1.038	0.8796	1.045	1.230	1.080	0.9421	1.095	100-110	0.9855	815.2	98.8,98.8
120	1.335	1.256	1.328	1.398	1.551	1.496	1.422	1.366	110-120	1.189	816.4	98.9,98.9
130	1.806	1.833	1.970	2.052	2.196	2.189	2.083	1.959	120-130	1.509	817.9	99.1,99.1
140	2.566	2.616	2.754	2.853	2.991	2.984	2.856	2.747	130-140	1.849	819.8	99.3,99.3
150	3.390	3.418	3.522	3.620	3.737	3.713	3.588	3.512	140-150	1.995	821.8	99.6,99.6
160	4.063	4.031	4.086	4.156	4.255	4.189	4.108	4.054	150-160	1.781	823.5	99.8,99.8
170	4.439	4.389	4.415	4.447	4.524	4.439	4.412	4.374	160-170	1.210	824.8	99.9,99.9
180	4.692	4.628	4.626	4.618	4.691	4.628	4.629	4.615	170-180	0.4300	825.2	100,100
DEG	LUMINOUS INTENSITY:cd									UNIT:lm		

Conical surface Flux(90deg): 581.43 lm

%lum = 70.5%

%lamp = 70.5%

Conical surface Flux(120deg): 710.39 lm

%lum = 86.1%

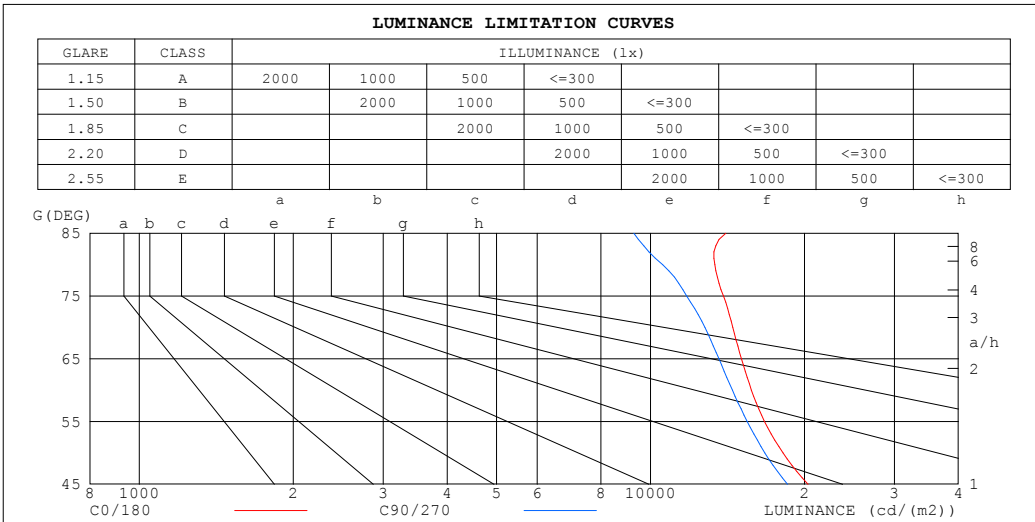
%lamp = 86.1%

C Range: 0 - 360DEG
 C Interval: 5.0DEG
 Test Speed: HIGH
 Temperature:25.3°C
 Operators:DAMIN
 Test Date:2024-03-27

γ Range: 0 - 180DEG
 γ Interval: 1.0DEG
 Test System:EVERFINE GO-2000B_V1 SYSTEM V2.00.471
 Humidity:65.0%
 Test Distance:4.880m [K=1.0000]
 Remarks:

LUMINANCE LIMITATION CURVES

NAME: LED Strip	TYPE: Indoor lighting	WEIGHT: 75g
SPEC.: LED	DIM.: 500*10*5MM	SERIAL No.: 20240326002
MFR.: EVERFINE	SUR.: 500*10MM	Shielding Angle:



LUMINANCE cd/ (m2)		
G (DEG)	C0/180	C90/270
85	14034	9276
80	13367	10561
75	13893	11769
70	14483	12773
65	15058	13604
60	15753	14453
55	16708	15452
50	18152	16733
45	20322	18527

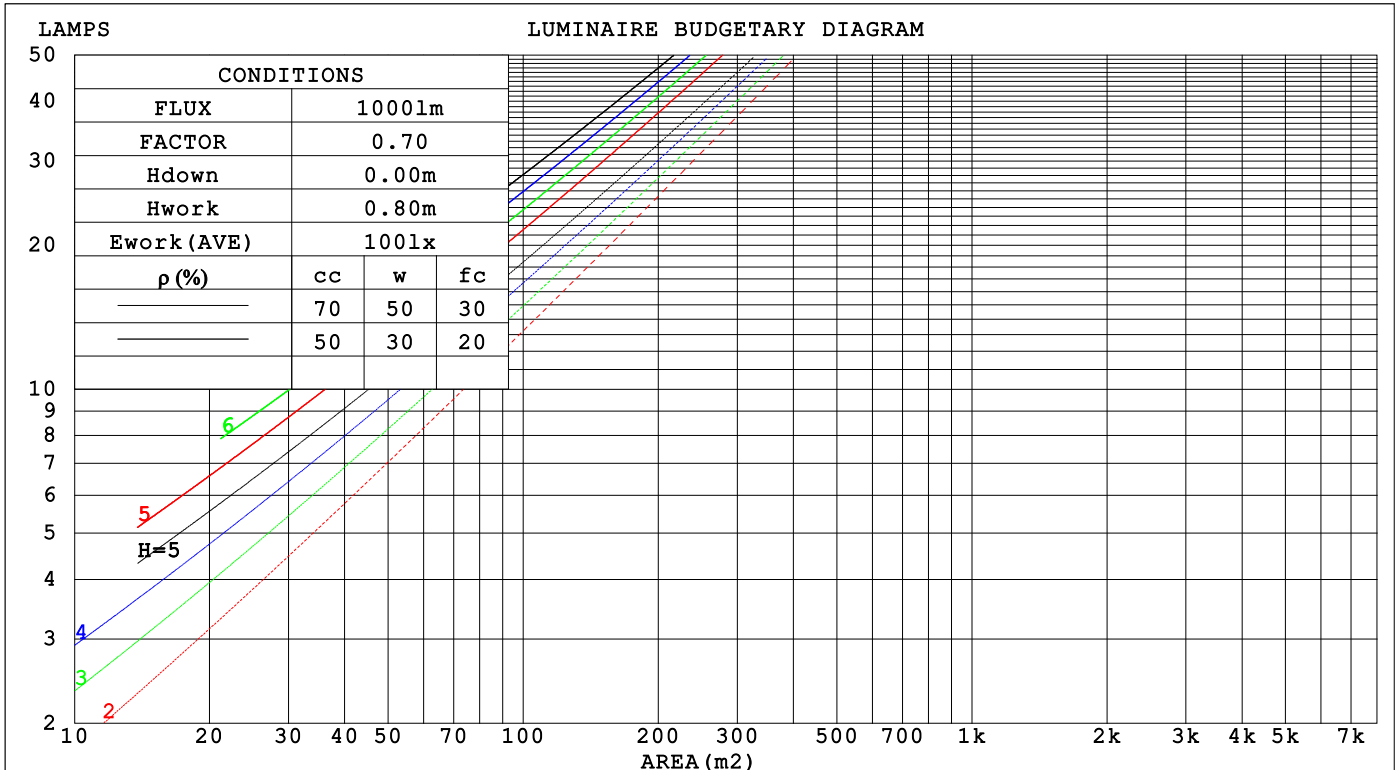
C Range: 0 - 360DEG
 C Interval: 5.0DEG
 Test Speed: HIGH
 Temperature: 25.3°C
 Operators: DAMIN
 Test Date: 2024-03-27

γ Range: 0 - 180DEG
 γ Interval: 1.0DEG
 Test System: EVERFINE GO-2000B_V1 SYSTEM V2.00.471
 Humidity: 65.0%
 Test Distance: 4.880m [K=1.0000]
 Remarks:

CU AND LUMINAIRE BUDGETARY ESTIMATE DIAGRAM

NAME: LED Strip	TYPE: Indoor lighting	WEIGHT: 75g
SPEC.: LED	DIM.: 500*10*5MM	SERIAL No.: 20240326002
MFR.: EVERFINE	SUR.: 500*10MM	Shielding Angle:

ρcc	80%			70%			50%			30%			10%			0
ρw	50%	30%	10%	50%	30%	10%	50%	30%	10%	50%	30%	10%	50%	30%	10%	0
ρfc	20%			20%			20%			20%			20%			0
RCR	RCR:Room Cavity Ratio															
	Coefficients of Utilization(CU)															
0.0	1.19	1.19	1.19	1.16	1.16	1.16	1.10	1.10	1.10	1.05	1.05	1.05	1.01	1.01	1.01	.99
1.0	1.07	1.03	.00	1.04	1.01	.98	.00	.97	.95	.96	.94	.92	.92	.90	.89	.87
2.0	.96	.90	.85	.94	.89	.84	.90	.86	.82	.87	.83	.80	.84	.81	.78	.76
3.0	.87	.80	.75	.85	.79	.74	.82	.77	.72	.79	.75	.71	.77	.73	.70	.68
4.0	.79	.72	.66	.78	.71	.66	.75	.69	.65	.73	.68	.64	.71	.66	.63	.61
5.0	.72	.65	.59	.71	.64	.59	.69	.63	.58	.67	.62	.58	.65	.61	.57	.55
6.0	.67	.59	.54	.66	.59	.54	.64	.58	.53	.62	.57	.53	.61	.56	.52	.50
7.0	.62	.55	.49	.61	.54	.49	.60	.53	.49	.58	.53	.48	.57	.52	.48	.46
8.0	.58	.51	.46	.57	.50	.45	.56	.49	.45	.54	.49	.45	.53	.48	.44	.43
9.0	.54	.47	.42	.53	.47	.42	.52	.46	.42	.51	.46	.42	.50	.45	.41	.40
10.0	.51	.44	.39	.50	.44	.39	.49	.43	.39	.48	.43	.39	.47	.42	.39	.37



C Range: 0 - 360DEG
 C Interval: 5.0DEG
 Test Speed: HIGH
 Temperature:25.3°C
 Operators:DAMIN
 Test Date:2024-03-27

γ Range: 0 - 180DEG
 γ Interval: 1.0DEG
 Test System:EVERFINE GO-2000B_V1 SYSTEM V2.00.471
 Humidity:65.0%
 Test Distance:4.880m [K=1.0000]
 Remarks:

WEC AND CCEC

NAME: LED Strip	TYPE: Indoor lighting	WEIGHT: 75g
SPEC.: LED	DIM.: 500*10*5MM	SERIAL No.: 20240326002
MFR.: EVERFINE	SUR.: 500*10MM	Shielding Angle:

ρ_{cc}	80%			70%			50%			30%			10%			0
ρ_w	50%	30%	10%	50%	30%	10%	50%	30%	10%	50%	30%	10%	50%	30%	10%	0
ρ_{fc}	20%			20%			20%			20%			20%			0
RCR	RCR:Room Cavity Ratio						Wall Exitance Coefficients(WEC)									
0.0																
1.0	.252	.144	.045	.245	.140	.044	.231	.133	.042	.218	.126	.040	.207	.120	.039	
2.0	.237	.130	.040	.231	.127	.039	.219	.122	.038	.208	.117	.037	.198	.112	.035	
3.0	.221	.118	.035	.215	.115	.035	.205	.111	.034	.195	.107	.033	.186	.103	.032	
4.0	.205	.107	.031	.201	.105	.031	.191	.101	.030	.183	.098	.030	.175	.095	.029	
5.0	.191	.098	.028	.187	.096	.028	.179	.093	.027	.171	.090	.027	.164	.088	.026	
6.0	.179	.090	.026	.175	.088	.025	.168	.086	.025	.161	.084	.025	.155	.081	.024	
7.0	.168	.083	.024	.164	.082	.023	.158	.080	.023	.152	.078	.023	.146	.076	.022	
8.0	.158	.077	.022	.155	.076	.022	.149	.074	.021	.144	.073	.021	.138	.071	.021	
9.0	.149	.072	.020	.146	.071	.020	.141	.070	.020	.136	.068	.020	.131	.067	.019	
10.0	.141	.068	.019	.139	.067	.019	.134	.066	.018	.129	.064	.018	.125	.063	.018	

ρ_{cc}	80%			70%			50%			30%			10%			0
ρ_w	50%	30%	10%	50%	30%	10%	50%	30%	10%	50%	30%	10%	50%	30%	10%	0
ρ_{fc}	20%			20%			20%			20%			20%			0
RCR	RCR:Room Cavity Ratio						Ceiling Cavity Exitance Coefficients(CCEC)									
0.0	.202	.202	.202	.172	.172	.172	.118	.118	.118	.068	.068	.068	.022	.022	.022	
1.0	.188	.168	.150	.161	.144	.129	.110	.099	.089	.063	.057	.052	.020	.018	.017	
2.0	.176	.144	.116	.151	.124	.100	.104	.086	.070	.060	.050	.041	.019	.016	.013	
3.0	.167	.126	.093	.143	.108	.080	.098	.075	.056	.057	.044	.033	.018	.014	.011	
4.0	.158	.112	.076	.135	.096	.066	.093	.067	.047	.054	.039	.028	.017	.013	.009	
5.0	.150	.101	.065	.128	.087	.056	.088	.061	.040	.051	.036	.024	.017	.012	.008	
6.0	.142	.092	.056	.122	.080	.049	.084	.056	.034	.049	.033	.020	.016	.011	.007	
7.0	.135	.085	.049	.117	.073	.043	.080	.051	.030	.047	.030	.018	.015	.010	.006	
8.0	.129	.079	.044	.111	.068	.038	.077	.048	.027	.045	.028	.016	.014	.009	.005	
9.0	.124	.074	.040	.106	.064	.035	.074	.045	.025	.043	.027	.015	.014	.009	.005	
10.0	.118	.069	.037	.102	.060	.032	.071	.042	.023	.041	.025	.014	.013	.008	.004	

C Range: 0 - 360DEG
 C Interval: 5.0DEG
 Test Speed: HIGH
 Temperature:25.3°C
 Operators:DAMIN
 Test Date:2024-03-27

γ Range: 0 - 180DEG
 γ Interval: 1.0DEG
 Test System:EVERFINE GO-2000B_V1 SYSTEM V2.00.471
 Humidity:65.0%
 Test Distance:4.880m [K=1.0000]
 Remarks:

UGR(Unified Glare Rating) Table

NAME: LED Strip	TYPE: Indoor lighting	WEIGHT: 75g
SPEC.: LED	DIM.: 500*10*5MM	SERIAL No.: 20240326002
MFR.: EVERFINE	SUR.: 500*10MM	Shielding Angle:

ceiling/cavity	0.7	0.7	0.5	0.5	0.3	0.7	0.7	0.5	0.5	0.3
walls	0.5	0.3	0.5	0.3	0.3	0.5	0.3	0.5	0.3	0.3
working plane	0.2	0.2	0.2	0.2	0.2	0.2	0.2	0.2	0.2	0.2

Room dimensions	Viewed crosswise					Viewed endwise				
x = 2H y = 2H	22.2	23.4	22.4	23.6	23.8	21.8	23.0	22.1	23.3	23.5
3H	23.5	24.6	23.8	24.9	25.1	23.1	24.2	23.4	24.5	24.7
4H	24.1	25.2	24.4	25.4	25.7	23.6	24.7	23.9	24.9	25.2
6H	24.6	25.6	24.9	25.9	26.2	24.0	25.0	24.3	25.3	25.6
8H	24.7	25.7	25.1	26.0	26.3	24.1	25.1	24.4	25.4	25.7
12H	24.9	25.8	25.3	26.1	26.5	24.2	25.1	24.5	25.4	25.7
4H 2H	22.7	23.7	23.0	24.0	24.3	22.4	23.5	22.7	23.7	24.0
3H	24.2	25.2	24.6	25.5	25.8	23.9	24.8	24.2	25.1	25.5
4H	24.9	25.8	25.3	26.1	26.5	24.5	25.4	24.9	25.7	26.1
6H	25.6	26.3	26.0	26.7	27.1	25.0	25.8	25.5	26.2	26.6
8H	25.8	26.5	26.2	26.9	27.3	25.2	25.9	25.6	26.3	26.7
12H	26.0	26.7	26.5	27.1	27.5	25.3	26.0	25.8	26.4	26.8
8H 4H	25.2	25.9	25.6	26.3	26.7	24.8	25.6	25.3	25.9	26.3
6H	26.0	26.6	26.4	27.0	27.4	25.5	26.1	26.0	26.5	27.0
8H	26.3	26.8	26.8	27.3	27.8	25.8	26.3	26.2	26.7	27.2
12H	26.6	27.1	27.1	27.6	28.1	26.0	26.4	26.5	26.9	27.4
12H 4H	25.2	25.9	25.7	26.3	26.7	24.9	25.5	25.3	25.9	26.4
6H	26.0	26.6	26.5	27.0	27.5	25.6	26.1	26.1	26.6	27.0
8H	26.4	26.9	26.9	27.3	27.9	25.9	26.3	26.4	26.8	27.3

Variations with the observer position at spacings(CIE Pub.117):		
S = 1.0H	+ 0.2 / - 0.3	+ 0.2 / - 0.3
1.5H	+ 0.1 / - 0.2	+ 0.1 / - 0.2
2.0H	+ 0.2 / - 0.3	+ 0.2 / - 0.4

CIE Pub.117, 825.2 lm Total Lamp Luminous Flux Correct (8log(F/F0) = -0.7)
 Area: 0.01 m2

C Range: 0 - 360DEG
 C Interval: 5.0DEG
 Test Speed: HIGH
 Temperature:25.3°C
 Operators:DAMIN
 Test Date:2024-03-27

γ Range: 0 - 180DEG
 γ Interval: 1.0DEG
 Test System:EVERFINE GO-2000B_V1 SYSTEM V2.00.471
 Humidity:65.0%
 Test Distance:4.880m [K=1.0000]
 Remarks:

UTILIZATION FACTORS TABLE

NAME: LED Strip	TYPE: Indoor lighting	WEIGHT: 75g
SPEC.: LED	DIM.: 500*10*5MM	SERIAL No.: 20240326002
MFR.: EVERFINE	SUR.: 500*10MM	Shielding Angle:

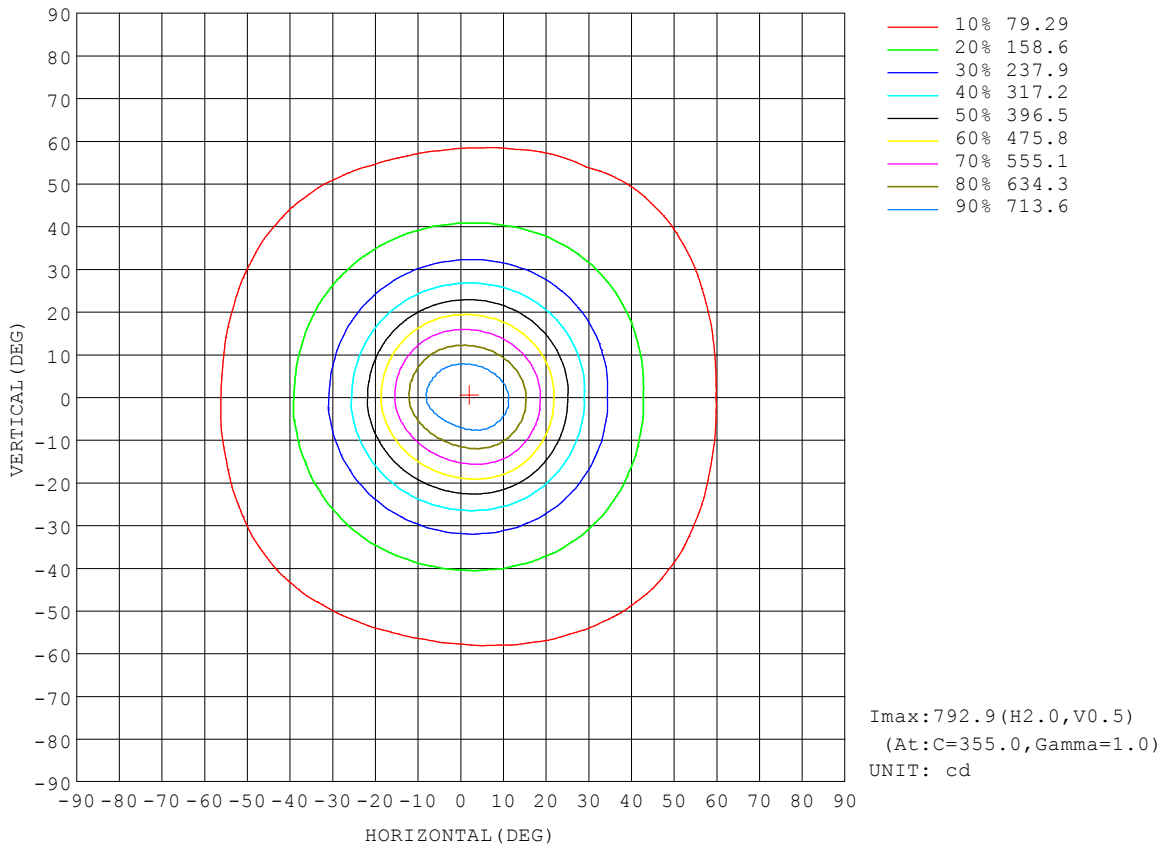
REFLECTANCE										
Ceiling	0.8	0.8	0.8	0.7	0.7	0.7	0.5	0.5	0.5	0
Walls	0.7	0.5	0.3	0.7	0.5	0.3	0.7	0.5	0.3	0
Working plane	0.2	0.2	0.2	0.2	0.2	0.2	0.2	0.2	0.2	0
ROOM INDEX	UTILIZATION FACTORS (PERCENT) $k(RI) \times RCR = 5$									
k = 0.60	69	60	54	69	60	54	67	59	54	49
0.80	78	69	63	77	69	63	76	68	62	57
1.00	85	76	70	84	76	70	82	76	69	64
1.25	91	83	77	90	82	76	87	80	76	69
1.50	95	87	82	93	86	81	90	84	80	73
2.00	100	93	88	98	92	87	95	90	86	79
2.50	103	97	92	101	95	91	97	93	89	81
3.00	106	100	96	104	99	95	100	96	92	84
4.00	109	104	101	106	102	99	102	99	96	88
5.00	111	107	104	108	105	102	104	101	99	90
ROOM INDEX	UF(total)									Direct
According to DIN EN 13032-2 2004			Suspended				SHRNOM = 1.25			

C Range: 0 - 360DEG
 C Interval: 5.0DEG
 Test Speed: HIGH
 Temperature: 25.3°C
 Operators: DAMIN
 Test Date: 2024-03-27

γ Range: 0 - 180DEG
 γ Interval: 1.0DEG
 Test System: EVERFINE GO-2000B_V1 SYSTEM V2.00.471
 Humidity: 65.0%
 Test Distance: 4.880m [K=1.0000]
 Remarks:

ISOCANDELA DIAGRAM

NAME: LED Strip	TYPE: Indoor lighting	WEIGHT: 75g
SPEC.: LED	DIM.: 500*10*5MM	SERIAL No.: 20240326002
MFR.: EVERFINE	SUR.: 500*10MM	Shielding Angle:

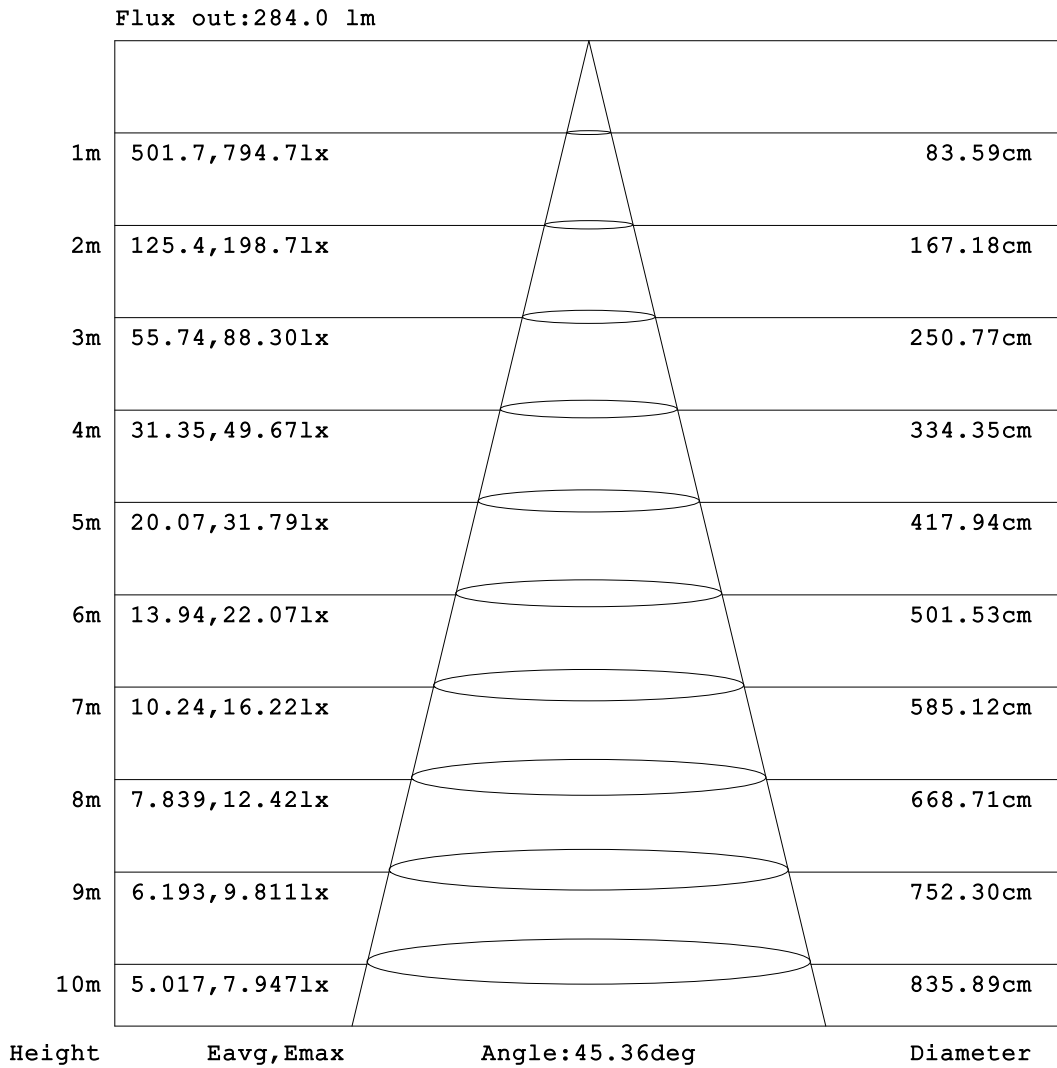


C Range: 0 - 360DEG
 C Interval: 5.0DEG
 Test Speed: HIGH
 Temperature: 25.3°C
 Operators: DAMIN
 Test Date: 2024-03-27

γ Range: 0 - 180DEG
 γ Interval: 1.0DEG
 Test System: EVERFINE GO-2000B_V1 SYSTEM V2.00.471
 Humidity: 65.0%
 Test Distance: 4.880m [K=1.0000]
 Remarks:

AAI Figure

NAME: LED Strip	TYPE: Indoor lighting	WEIGHT: 75g
SPEC.: LED	DIM.: 500*10*5MM	SERIAL No.: 20240326002
MFR.: EVERFINE	SUR.: 500*10MM	Shielding Angle:



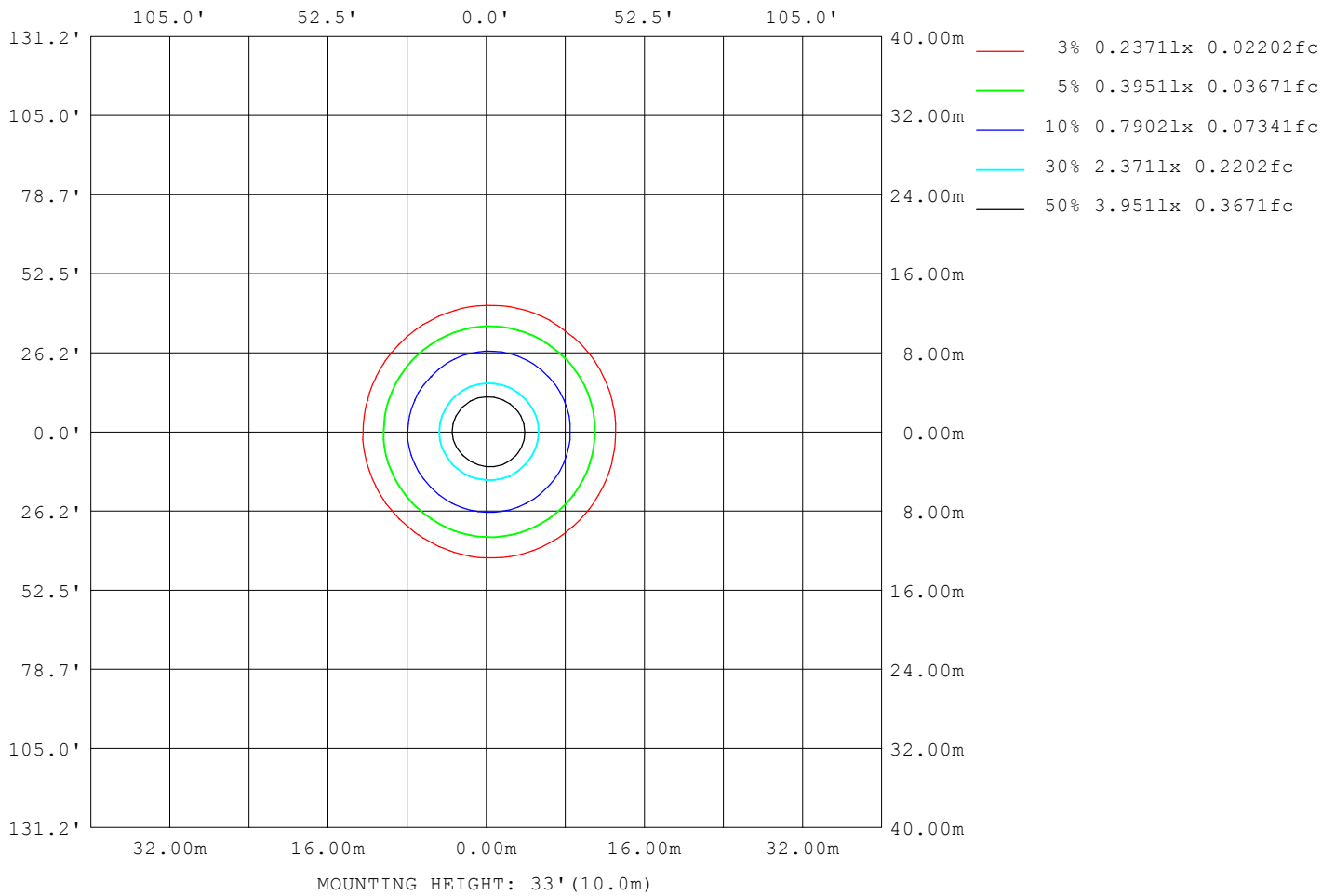
Note:The Curves indicate the illuminated area and the average illumination when the luminaire is at different distance.

C Range: 0 - 360DEG
 C Interval: 5.0DEG
 Test Speed: HIGH
 Temperature:25.3°C
 Operators:DAMIN
 Test Date:2024-03-27

γ Range: 0 - 180DEG
 γ Interval: 1.0DEG
 Test System:EVERFINE GO-2000B_V1 SYSTEM V2.00.471
 Humidity:65.0%
 Test Distance:4.880m [K=1.0000]
 Remarks:

ISOLUX DIAGRAM

NAME: LED Strip	TYPE: Indoor lighting	WEIGHT: 75g
SPEC.: LED	DIM.: 500*10*5MM	SERIAL No.: 20240326002
MFR.: EVERFINE	SUR.: 500*10MM	Shielding Angle:



C Range: 0 - 360DEG
 C Interval: 5.0DEG
 Test Speed: HIGH
 Temperature: 25.3°C
 Operators: DAMIN
 Test Date: 2024-03-27

γ Range: 0 - 180DEG
 γ Interval: 1.0DEG
 Test System: EVERFINE GO-2000B_V1 SYSTEM V2.00.471
 Humidity: 65.0%
 Test Distance: 4.880m [K=1.0000]
 Remarks:

LED Avg.L Report

NAME: LED Strip	TYPE: Indoor lighting	WEIGHT: 75g
SPEC.: LED	DIM.: 500*10*5MM	SERIAL No.: 20240326002
MFR.: EVERFINE	SUR.: 500*10MM	Shielding Angle:

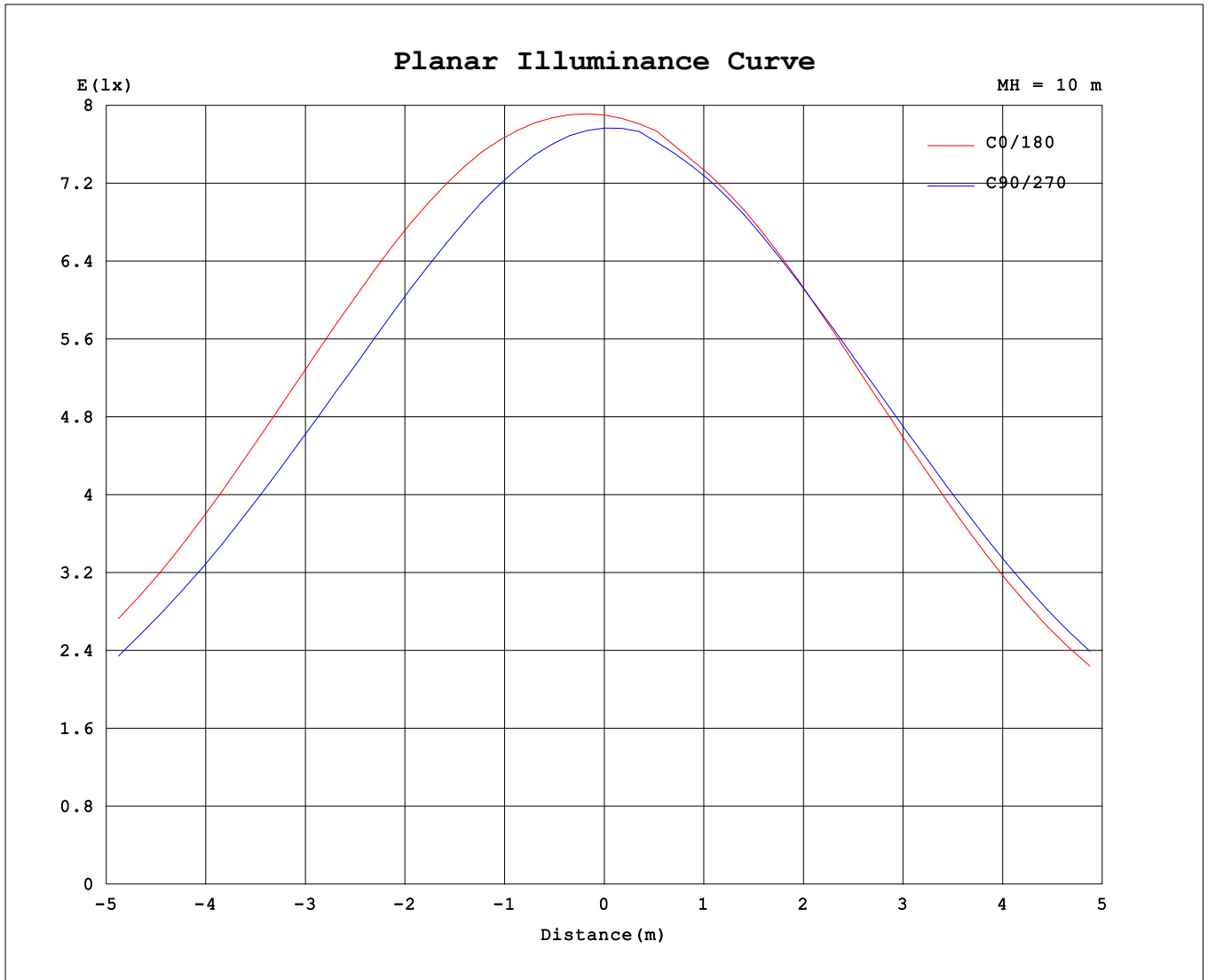
AvgL	cd/m2
L_0~180 (65) av	13819
L_0~180 (75) av	12096
L_0~180 (85) av	10706
L_90~270 (65) av	13771
L_90~270 (75) av	12109
L_90~270 (85) av	10045
L_45 (65) av	13972
L_45 (75) av	12357
L_45 (85) av	10886

Standard: GB/T 29293-2012

C Range: 0 - 360DEG
 C Interval: 5.0DEG
 Test Speed: HIGH
 Temperature:25.3℃
 Operators:DAMIN
 Test Date:2024-03-27

γ Range: 0 - 180DEG
 γ Interval: 1.0DEG
 Test System:EVERFINE GO-2000B_V1 SYSTEM V2.00.471
 Humidity:65.0%
 Test Distance:4.880m [K=1.0000]
 Remarks:

Planar Illuminance Curve



C Range: 0 - 360DEG
 C Interval: 5.0DEG
 Test Speed: HIGH
 Temperature: 25.3°C
 Operators: DAMIN
 Test Date: 2024-03-27

γ Range: 0 - 180DEG
 γ Interval: 1.0DEG
 Test System: EVERFINE GO-2000B_V1 SYSTEM V2.00.471
 Humidity: 65.0%
 Test Distance: 4.880m [K=1.0000]
 Remarks:

LUMINOUS DISTRIBUTION INTENSITY DATA

NAME: LED Strip	TYPE: Indoor lighting	WEIGHT: 75g
SPEC.: LED	DIM.: 500*10*5MM	SERIAL No.: 20240326002
MFR.: EVERFINE	SUR.: 500*10MM	Shielding Angle:

Table--1

UNIT: cd

C (DEG) \ γ (DEG)	0	5	10	15	20	25	30	35	40	45	50	55	60	65	70	75	80	85	90
0	790	790	789	788	785	783	782	780	780	780	780	780	780	779	779	779	778	777	777
5	783	785	783	783	779	777	773	768	769	762	765	758	760	752	754	747	748	742	743
10	733	731	735	731	732	724	725	718	718	710	709	701	698	689	686	678	675	667	665
15	641	640	644	640	641	635	634	628	627	619	616	608	603	594	589	580	576	567	564
20	521	522	524	522	521	517	516	512	510	504	501	495	490	482	477	469	464	456	452
25	398	398	399	398	396	394	392	388	386	382	380	375	371	366	362	357	353	348	344
30	299	301	299	300	296	295	291	291	287	287	282	282	277	277	272	271	267	266	261
35	230	232	230	231	228	228	225	225	221	222	218	218	215	215	211	211	207	207	204
40	180	181	180	180	178	178	176	176	173	173	171	171	169	169	166	166	164	164	161
45	144	145	144	144	142	143	141	141	139	139	138	138	137	137	135	135	133	133	131
50	117	118	117	117	116	116	115	115	114	114	113	114	112	112	111	111	109	109	108
55	95.8	96.4	96.1	96.5	95.8	96.0	95.4	95.5	94.8	94.8	94.0	94.0	93.3	93.2	92.2	91.9	90.6	90.0	88.6
60	78.8	79.3	79.0	79.4	78.9	79.1	78.6	78.8	78.3	78.3	77.7	77.6	77.0	77.0	76.1	75.7	74.5	73.7	72.3
65	63.6	63.9	63.9	64.0	63.8	63.8	63.7	63.6	63.3	63.2	62.9	62.6	62.3	62.0	61.4	60.7	59.6	58.6	57.5
70	49.5	49.8	49.7	49.9	49.7	49.8	49.6	49.6	49.3	49.2	48.8	48.7	48.3	48.0	47.3	46.7	45.5	44.7	43.7
75	36.0	36.3	36.1	36.3	36.0	36.2	35.8	36.0	35.6	35.6	35.0	35.1	34.4	34.4	33.3	32.9	31.7	31.4	30.5
80	23.2	23.5	23.2	23.5	23.1	23.3	22.9	23.0	22.6	22.6	22.1	22.1	21.5	21.3	20.5	20.1	19.2	19.1	18.3
85	12.2	12.5	12.2	12.4	12.1	12.2	11.9	11.9	11.6	11.6	11.1	11.1	10.5	10.4	9.75	9.61	9.07	8.85	8.08
90	4.15	4.32	4.13	4.25	4.04	4.11	3.85	3.89	3.59	3.58	3.25	3.22	2.85	2.79	2.44	2.37	1.92	1.79	1.27
95	1.23	1.25	1.22	1.24	1.20	1.20	1.13	1.12	1.04	1.02	0.99	0.99	0.99	0.98	0.96	0.92	0.76	0.59	0.58
100	0.82	0.83	0.84	0.86	0.87	0.88	0.89	0.90	0.90	0.91	0.92	0.92	0.92	0.90	0.83	0.67	0.61	0.61	0.60
105	0.86	0.88	0.88	0.90	0.91	0.93	0.93	0.95	0.95	0.97	0.96	0.95	0.89	0.80	0.73	0.71	0.70	0.71	0.71
110	0.98	0.99	0.99	1.02	1.02	1.04	1.05	1.06	1.05	1.04	0.99	0.95	0.89	0.86	0.84	0.86	0.86	0.88	0.88
115	1.14	1.15	1.15	1.17	1.17	1.17	1.16	1.16	1.13	1.11	1.07	1.04	1.02	1.03	1.04	1.05	1.06	1.07	1.08
120	1.33	1.34	1.33	1.34	1.33	1.33	1.31	1.30	1.27	1.26	1.24	1.24	1.25	1.26	1.27	1.29	1.30	1.31	1.33
125	1.55	1.55	1.54	1.54	1.53	1.53	1.52	1.51	1.50	1.51	1.51	1.52	1.53	1.55	1.56	1.58	1.59	1.61	1.62
130	1.81	1.81	1.80	1.80	1.81	1.81	1.82	1.82	1.83	1.83	1.85	1.86	1.87	1.88	1.90	1.92	1.94	1.95	1.97
135	2.16	2.16	2.17	2.17	2.18	2.18	2.19	2.19	2.20	2.21	2.22	2.23	2.25	2.26	2.28	2.29	2.31	2.33	2.35
140	2.57	2.56	2.58	2.58	2.59	2.59	2.60	2.60	2.61	2.62	2.63	2.64	2.65	2.66	2.68	2.69	2.71	2.73	2.75
145	2.98	2.99	3.00	3.00	3.01	3.01	3.02	3.02	3.02	3.03	3.04	3.04	3.05	3.06	3.08	3.09	3.11	3.13	3.15
150	3.39	3.40	3.41	3.41	3.41	3.41	3.42	3.41	3.42	3.42	3.42	3.43	3.43	3.44	3.45	3.47	3.48	3.50	3.52
155	3.76	3.78	3.78	3.77	3.77	3.77	3.77	3.76	3.76	3.76	3.76	3.76	3.77	3.77	3.78	3.79	3.81	3.82	3.84
160	4.06	4.08	4.07	4.06	4.06	4.05	4.04	4.04	4.03	4.03	4.02	4.03	4.03	4.03	4.04	4.05	4.06	4.08	4.09
165	4.29	4.29	4.28	4.28	4.26	4.26	4.24	4.24	4.23	4.23	4.22	4.23	4.23	4.24	4.24	4.25	4.25	4.27	4.27
170	4.44	4.44	4.43	4.43	4.41	4.41	4.39	4.39	4.38	4.39	4.38	4.39	4.38	4.40	4.39	4.40	4.40	4.42	4.41
175	4.57	4.58	4.57	4.57	4.55	4.55	4.53	4.54	4.52	4.53	4.52	4.53	4.52	4.53	4.53	4.54	4.53	4.54	4.54
180	4.69	4.69	4.68	4.67	4.65	4.65	4.63	4.63	4.63	4.63	4.63	4.63	4.63	4.63	4.63	4.63	4.62	4.63	4.63

C Range: 0 - 360DEG
 C Interval: 5.0DEG
 Test Speed: HIGH
 Temperature:25.3℃
 Operators:DAMIN
 Test Date:2024-03-27

γ Range: 0 - 180DEG
 γ Interval: 1.0DEG
 Test System:EVERFINE GO-2000B_V1 SYSTEM V2.00.471
 Humidity:65.0%
 Test Distance:4.880m [K=1.0000]
 Remarks:

LUMINOUS DISTRIBUTION INTENSITY DATA

NAME: LED Strip	TYPE: Indoor lighting	WEIGHT: 75g
SPEC.: LED	DIM.: 500*10*5MM	SERIAL No.: 20240326002
MFR.: EVERFINE	SUR.: 500*10MM	Shielding Angle:

Table--2

UNIT: cd

C (DEG) \ γ (DEG)	95	100	105	110	115	120	125	130	135	140	145	150	155	160	165	170	175	180	185
0	777	777	778	777	778	779	780	780	781	782	784	785	787	789	791	792	793	790	790
5	738	740	735	738	734	738	735	739	736	741	740	746	745	752	751	757	755	753	758
10	659	659	653	654	650	653	651	654	652	657	657	662	663	670	671	677	678	677	681
15	557	555	549	548	544	546	543	545	543	547	547	551	552	558	559	564	566	564	567
20	446	443	437	436	432	432	430	430	429	431	431	433	433	437	438	442	443	440	442
25	340	337	334	332	330	329	327	324	326	324	325	324	326	328	329	330	332	327	328
30	261	257	256	253	253	250	250	247	249	247	248	247	249	248	250	249	252	249	247
35	203	200	200	197	197	194	194	192	193	191	193	191	193	192	194	193	196	193	192
40	161	159	158	156	156	154	154	152	152	151	152	151	152	152	153	153	154	152	152
45	131	129	128	126	126	124	124	123	123	122	123	122	123	123	124	124	125	123	123
50	107	106	105	103	103	101	101	100	101	100	101	101	101	101	102	101	102	101	101
55	87.9	86.4	85.6	84.4	84.1	83.3	83.2	82.5	82.9	82.7	83.1	82.9	83.4	83.2	83.6	83.3	83.9	83.1	82.7
60	71.5	70.3	69.7	68.8	68.3	68.1	68.0	68.0	68.0	67.9	67.8	67.8	67.8	67.7	67.8	67.8	68.0	67.4	67.3
65	56.7	55.9	55.3	55.1	55.0	54.7	54.6	54.3	54.2	54.1	53.9	53.7	53.6	53.4	53.5	53.4	53.6	53.2	53.1
70	43.2	42.7	42.6	42.1	42.0	41.6	41.5	41.1	41.1	40.7	40.5	40.2	40.1	39.9	40.0	39.8	40.0	39.5	39.4
75	30.5	29.2	29.2	29.1	29.2	28.6	28.6	28.1	28.1	27.6	27.6	27.1	27.3	26.8	27.0	26.7	27.1	26.7	26.5
80	17.8	17.3	17.8	17.4	17.3	16.8	16.8	16.4	16.4	16.0	16.0	15.6	15.6	15.3	15.5	15.2	15.5	15.1	15.0
85	7.67	8.17	8.29	7.89	7.92	7.57	7.58	7.26	7.30	6.99	7.04	6.78	6.88	6.67	6.80	6.63	6.82	6.43	6.30
90	1.82	1.85	2.08	1.98	2.04	1.88	1.91	1.79	1.82	1.75	1.79	1.73	1.79	1.74	1.81	1.77	1.86	1.44	1.45
95	0.68	0.80	1.07	1.14	1.13	1.12	1.09	1.07	1.04	1.03	1.00	0.98	0.95	0.94	0.92	0.91	0.90	0.85	0.86
100	0.64	0.70	0.74	0.81	0.90	1.00	1.02	1.03	1.03	1.01	1.01	0.98	0.98	0.96	0.95	0.93	0.94	0.93	0.93
105	0.73	0.75	0.78	0.79	0.82	0.86	0.92	0.99	1.04	1.07	1.09	1.08	1.09	1.07	1.07	1.05	1.05	1.06	1.07
110	0.89	0.90	0.92	0.93	0.94	0.95	0.97	0.99	1.05	1.08	1.13	1.15	1.18	1.18	1.20	1.19	1.19	1.23	1.24
115	1.09	1.10	1.11	1.12	1.13	1.13	1.15	1.15	1.16	1.17	1.20	1.23	1.27	1.28	1.32	1.33	1.35	1.41	1.41
120	1.34	1.35	1.36	1.36	1.37	1.38	1.39	1.39	1.40	1.40	1.41	1.41	1.42	1.43	1.45	1.46	1.48	1.55	1.55
125	1.64	1.65	1.65	1.66	1.67	1.68	1.68	1.69	1.70	1.70	1.71	1.71	1.72	1.73	1.73	1.74	1.75	1.83	1.85
130	1.98	2.00	2.00	2.01	2.02	2.03	2.04	2.05	2.05	2.06	2.06	2.07	2.08	2.08	2.09	2.09	2.10	2.20	2.21
135	2.36	2.38	2.39	2.40	2.41	2.42	2.43	2.44	2.44	2.45	2.46	2.47	2.47	2.48	2.47	2.48	2.48	2.59	2.60
140	2.77	2.79	2.79	2.81	2.81	2.83	2.83	2.85	2.85	2.86	2.87	2.88	2.88	2.88	2.88	2.89	2.89	2.99	3.00
145	3.17	3.18	3.19	3.20	3.21	3.23	3.23	3.25	3.25	3.26	3.27	3.28	3.28	3.28	3.28	3.29	3.29	3.38	3.39
150	3.54	3.55	3.56	3.57	3.58	3.59	3.60	3.61	3.62	3.63	3.64	3.64	3.65	3.65	3.65	3.65	3.66	3.74	3.74
155	3.85	3.87	3.88	3.88	3.89	3.90	3.91	3.92	3.92	3.93	3.94	3.94	3.95	3.95	3.95	3.95	3.97	4.03	4.02
160	4.10	4.11	4.12	4.12	4.13	4.14	4.15	4.14	4.16	4.15	4.16	4.16	4.17	4.17	4.17	4.17	4.20	4.25	4.23
165	4.29	4.29	4.30	4.30	4.31	4.31	4.32	4.31	4.32	4.31	4.32	4.32	4.32	4.32	4.33	4.33	4.37	4.42	4.38
170	4.43	4.43	4.44	4.43	4.44	4.44	4.45	4.44	4.45	4.44	4.45	4.43	4.44	4.43	4.45	4.45	4.49	4.52	4.50
175	4.55	4.54	4.55	4.54	4.55	4.54	4.56	4.54	4.55	4.54	4.55	4.54	4.55	4.54	4.56	4.56	4.61	4.62	4.61
180	4.62	4.63	4.63	4.62	4.62	4.62	4.62	4.62	4.62	4.62	4.62	4.62	4.63	4.63	4.65	4.67	4.69	4.69	4.69

C Range: 0 - 360DEG
 C Interval: 5.0DEG
 Test Speed: HIGH
 Temperature:25.3°C
 Operators:DAMIN
 Test Date:2024-03-27

γ Range: 0 - 180DEG
 γ Interval: 1.0DEG
 Test System:EVERFINE GO-2000B_V1 SYSTEM V2.00.471
 Humidity:65.0%
 Test Distance:4.880m [K=1.0000]
 Remarks:

LUMINOUS DISTRIBUTION INTENSITY DATA

NAME: LED Strip	TYPE: Indoor lighting	WEIGHT: 75g
SPEC.: LED	DIM.: 500*10*5MM	SERIAL No.: 20240326002
MFR.: EVERFINE	SUR.: 500*10MM	Shielding Angle:

Table--3

UNIT: cd

C (DEG) γ (DEG)	190	195	200	205	210	215	220	225	230	235	240	245	250	255	260	265	270	275	280
0	789	788	785	783	782	780	780	780	780	780	780	779	779	779	778	777	777	777	777
5	753	757	750	754	748	752	747	751	747	752	747	752	747	752	747	751	747	753	749
10	678	682	678	680	676	679	675	679	675	679	675	678	674	677	674	677	674	679	676
15	566	569	567	570	568	571	569	572	571	573	572	574	572	574	572	574	573	577	576
20	441	443	441	444	442	445	444	447	447	450	450	453	453	456	456	460	460	464	465
25	327	328	327	328	327	328	329	330	331	334	335	338	339	342	344	348	349	353	356
30	248	247	248	247	249	248	249	249	251	251	254	255	258	259	262	263	266	268	271
35	192	191	192	191	192	191	193	192	195	195	197	198	200	201	204	204	207	208	211
40	152	151	152	151	152	151	153	152	154	154	156	157	159	160	162	162	164	165	167
45	123	122	123	123	123	123	124	124	125	125	127	127	129	130	131	132	133	134	136
50	101	100	101	101	101	101	102	102	103	103	104	105	106	107	108	108	110	110	111
55	83.1	82.7	83.2	83.0	83.7	83.7	84.4	84.5	85.3	85.2	86.0	85.9	86.9	87.4	88.8	89.2	90.5	91.0	92.2
60	67.5	67.4	67.6	67.8	68.1	68.3	69.0	69.1	69.9	69.8	70.1	69.8	70.4	71.1	72.3	72.7	74.0	74.5	75.6
65	53.2	53.2	53.4	53.6	53.9	54.1	54.5	54.8	55.4	55.8	56.0	56.0	56.3	56.8	57.6	58.1	58.9	59.6	60.4
70	39.6	39.6	39.8	40.0	40.3	40.5	40.9	41.2	41.7	42.1	42.7	42.8	43.2	43.5	44.2	44.7	45.4	45.8	46.5
75	26.8	26.6	27.0	27.0	27.4	27.4	27.9	28.0	28.6	28.8	29.5	29.7	30.3	30.4	31.1	31.4	32.2	32.6	33.3
80	15.2	15.1	15.4	15.4	15.8	15.8	16.2	16.2	16.7	16.8	17.4	17.6	18.2	18.4	18.9	19.1	19.8	20.1	20.7
85	6.49	6.38	6.59	6.50	6.74	6.66	6.93	6.88	7.27	7.29	7.73	7.78	8.26	8.39	8.86	8.91	9.43	9.51	10.1
90	1.52	1.52	1.60	1.60	1.67	1.62	1.66	1.61	1.66	1.62	1.72	1.70	1.84	1.83	1.94	1.84	1.86	2.13	2.62
95	0.87	0.90	0.92	0.95	0.95	0.93	0.93	0.92	0.92	0.93	0.93	0.95	0.94	0.92	0.72	0.63	0.60	0.61	0.71
100	0.96	0.98	1.01	1.02	1.01	0.98	0.98	0.96	0.96	0.93	0.91	0.83	0.72	0.68	0.66	0.64	0.64	0.63	0.64
105	1.10	1.12	1.16	1.15	1.13	1.10	1.09	1.04	0.98	0.91	0.85	0.79	0.79	0.78	0.78	0.76	0.76	0.75	0.75
110	1.26	1.28	1.31	1.28	1.24	1.18	1.15	1.08	1.03	0.98	0.98	0.96	0.96	0.96	0.95	0.94	0.94	0.93	0.93
115	1.42	1.42	1.45	1.41	1.36	1.28	1.25	1.23	1.22	1.20	1.19	1.19	1.18	1.18	1.17	1.16	1.16	1.15	1.14
120	1.56	1.58	1.60	1.59	1.58	1.53	1.51	1.50	1.49	1.48	1.47	1.46	1.45	1.44	1.44	1.43	1.42	1.41	1.40
125	1.86	1.88	1.90	1.91	1.88	1.84	1.82	1.82	1.81	1.80	1.79	1.78	1.77	1.76	1.75	1.74	1.73	1.72	1.70
130	2.21	2.23	2.23	2.23	2.21	2.20	2.19	2.19	2.18	2.17	2.15	2.15	2.13	2.13	2.11	2.10	2.08	2.07	2.05
135	2.60	2.60	2.60	2.60	2.59	2.59	2.58	2.58	2.57	2.56	2.54	2.54	2.52	2.51	2.49	2.49	2.46	2.45	2.43
140	2.99	3.00	2.99	3.00	2.99	2.99	2.98	2.98	2.97	2.96	2.94	2.93	2.91	2.91	2.89	2.88	2.86	2.85	2.82
145	3.39	3.39	3.38	3.39	3.38	3.38	3.37	3.37	3.35	3.34	3.33	3.32	3.29	3.29	3.27	3.26	3.24	3.23	3.20
150	3.74	3.74	3.74	3.74	3.73	3.73	3.72	3.71	3.70	3.69	3.67	3.66	3.64	3.64	3.62	3.61	3.59	3.58	3.56
155	4.02	4.02	4.02	4.01	4.01	4.00	4.00	3.99	3.98	3.96	3.96	3.94	3.93	3.92	3.91	3.90	3.88	3.87	3.86
160	4.23	4.22	4.22	4.21	4.21	4.20	4.20	4.19	4.19	4.17	4.17	4.16	4.15	4.14	4.13	4.12	4.11	4.09	4.09
165	4.37	4.35	4.35	4.34	4.35	4.34	4.34	4.33	4.33	4.32	4.32	4.31	4.31	4.29	4.29	4.28	4.28	4.26	4.26
170	4.48	4.46	4.46	4.45	4.45	4.44	4.45	4.44	4.45	4.44	4.44	4.43	4.43	4.42	4.42	4.41	4.41	4.40	4.40
175	4.59	4.56	4.57	4.55	4.56	4.55	4.56	4.54	4.55	4.54	4.55	4.54	4.54	4.53	4.54	4.53	4.53	4.52	4.53
180	4.69	4.66	4.65	4.64	4.64	4.63	4.63	4.63	4.63	4.63	4.63	4.63	4.63	4.62	4.63	4.63	4.63	4.63	4.63

C Range: 0 - 360DEG
 C Interval: 5.0DEG
 Test Speed: HIGH
 Temperature:25.3°C
 Operators:DAMIN
 Test Date:2024-03-27

γ Range: 0 - 180DEG
 γ Interval: 1.0DEG
 Test System:EVERFINE GO-2000B_V1 SYSTEM V2.00.471
 Humidity:65.0%
 Test Distance:4.880m [K=1.0000]
 Remarks:

LUMINOUS DISTRIBUTION INTENSITY DATA

NAME: LED Strip	TYPE: Indoor lighting	WEIGHT: 75g
SPEC.: LED	DIM.: 500*10*5MM	SERIAL No.: 20240326002
MFR.: EVERFINE	SUR.: 500*10MM	Shielding Angle:

Table--4

UNIT: cd

C (DEG) \ γ (DEG)	285	290	295	300	305	310	315	320	325	330	335	340	345	350	355				
0	778	777	778	779	780	780	781	782	784	785	787	789	791	792	793				
5	754	751	757	754	762	758	765	765	770	770	776	780	782	785	785				
10	682	680	686	686	693	693	700	700	709	710	718	719	727	726	733				
15	580	581	587	588	595	596	603	606	614	617	625	627	634	635	640				
20	469	470	476	478	485	486	493	495	502	505	512	513	520	520	523				
25	360	362	367	370	374	376	381	384	389	391	395	397	401	401	402				
30	272	276	278	282	283	287	288	293	294	298	299	302	302	305	303				
35	212	215	216	219	220	222	223	226	227	230	230	233	233	234	232				
40	168	170	171	173	173	175	176	178	178	180	180	182	181	182	181				
45	136	137	138	140	140	141	141	143	143	145	145	146	145	146	145				
50	112	113	114	115	113	114	115	117	117	118	118	118	118	118	118				
55	92.4	93.6	94.0	94.3	93.2	94.4	95.8	96.7	96.5	97.2	96.9	97.4	97.0	97.2	96.5				
60	76.0	77.2	77.6	77.3	76.6	78.2	79.0	79.6	79.4	79.9	79.7	80.0	79.6	79.8	79.3				
65	61.0	61.8	62.3	61.9	62.0	63.5	63.9	64.2	64.2	64.4	64.3	64.4	64.3	64.3	64.0				
70	46.8	47.3	47.9	47.7	48.4	49.6	49.8	50.0	50.0	50.2	50.1	50.2	50.0	50.0	45.5				
75	33.3	34.0	33.7	34.1	35.0	36.0	36.1	36.5	36.4	36.6	36.5	36.6	36.4	36.5	33.4				
80	21.0	21.7	21.2	21.9	22.5	23.2	23.2	23.7	23.6	23.9	23.7	23.9	23.6	22.1	22.6				
85	10.3	10.9	10.8	11.4	11.7	12.2	12.2	12.6	12.5	12.8	12.6	12.9	11.6	7.97	12.5				
90	2.82	3.22	3.26	3.64	3.75	4.09	4.12	4.39	4.38	3.43	4.04	4.42	4.05	4.62	4.54				
95	0.86	0.93	0.84	0.95	1.09	1.16	1.22	1.17	1.34	1.41	1.41	1.44	1.41	1.42	1.37				
100	0.73	0.84	0.90	0.91	0.91	0.92	0.91	0.92	0.91	0.90	0.89	0.88	0.87	0.86	0.85				
105	0.74	0.79	0.88	0.95	0.98	1.00	0.99	0.99	0.98	0.97	0.96	0.95	0.94	0.93	0.92				
110	0.92	0.92	0.93	0.98	1.02	1.08	1.10	1.12	1.11	1.11	1.10	1.09	1.07	1.07	1.06				
115	1.13	1.12	1.11	1.12	1.14	1.18	1.20	1.23	1.24	1.26	1.25	1.26	1.25	1.24	1.24				
120	1.38	1.37	1.35	1.35	1.34	1.35	1.37	1.39	1.41	1.43	1.42	1.44	1.44	1.45	1.46				
125	1.69	1.67	1.66	1.64	1.63	1.62	1.61	1.62	1.63	1.65	1.65	1.66	1.67	1.68	1.69				
130	2.04	2.02	2.01	1.99	1.98	1.96	1.96	1.95	1.95	1.94	1.94	1.94	1.94	1.95	1.96				
135	2.42	2.40	2.39	2.37	2.36	2.34	2.34	2.33	2.33	2.31	2.32	2.31	2.31	2.30	2.32				
140	2.81	2.79	2.78	2.77	2.76	2.75	2.75	2.74	2.74	2.72	2.73	2.72	2.73	2.71	2.73				
145	3.19	3.17	3.17	3.15	3.15	3.14	3.15	3.14	3.14	3.13	3.14	3.13	3.14	3.13	3.14				
150	3.54	3.53	3.52	3.51	3.51	3.51	3.51	3.51	3.51	3.51	3.52	3.52	3.53	3.53	3.54				
155	3.84	3.83	3.82	3.82	3.81	3.81	3.82	3.82	3.83	3.83	3.84	3.85	3.86	3.88	3.88				
160	4.07	4.07	4.06	4.05	4.05	4.05	4.05	4.07	4.07	4.09	4.09	4.11	4.12	4.14	4.16				
165	4.25	4.25	4.24	4.24	4.23	4.24	4.23	4.25	4.25	4.26	4.27	4.29	4.29	4.32	4.34				
170	4.39	4.39	4.38	4.39	4.37	4.38	4.37	4.39	4.38	4.40	4.40	4.42	4.43	4.45	4.47				
175	4.52	4.52	4.51	4.52	4.51	4.52	4.51	4.52	4.51	4.53	4.52	4.55	4.55	4.57	4.59				
180	4.62	4.62	4.62	4.62	4.62	4.62	4.62	4.62	4.62	4.62	4.63	4.63	4.65	4.67	4.69				

C Range: 0 - 360DEG
 C Interval: 5.0DEG
 Test Speed: HIGH
 Temperature:25.3°C
 Operators:DAMIN
 Test Date:2024-03-27

γ Range: 0 - 180DEG
 γ Interval: 1.0DEG
 Test System:EVERFINE GO-2000B_V1 SYSTEM V2.00.471
 Humidity:65.0%
 Test Distance:4.880m [K=1.0000]
 Remarks: