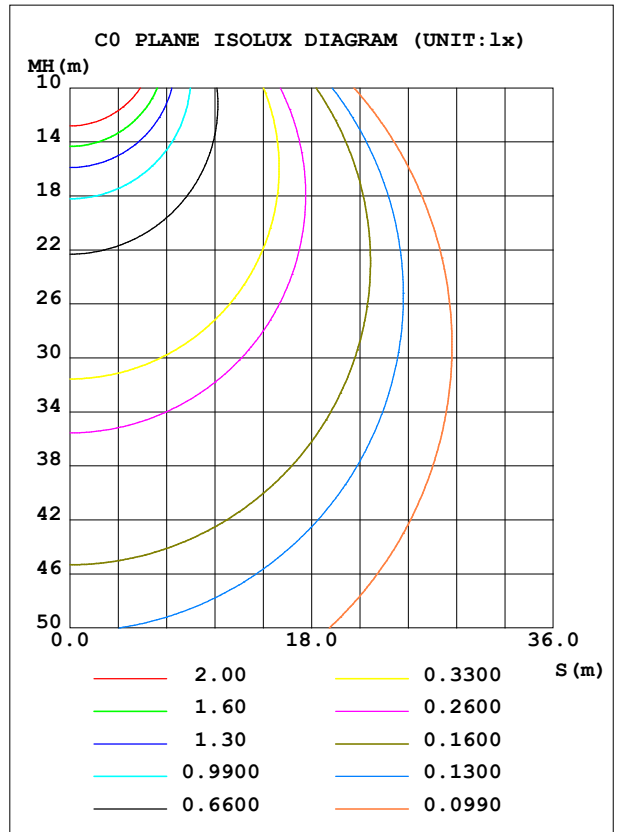
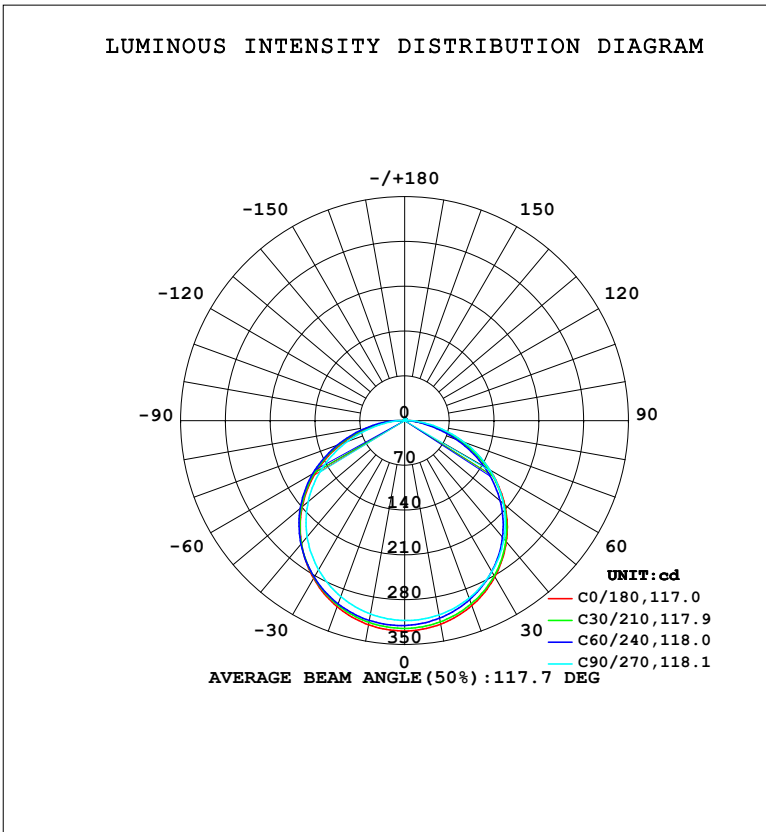


LUMINAIRE PHOTOMETRIC TEST REPORT

NAME: LED Strip	TYPE: Indoor lighting	WEIGHT: 75g
SPEC.: 2835 098LED	DIM.: 500*10*1.2MM	SERIAL No.: 20231025022
MFR.: EVERFINE	SUR.: 500*10MM	Shielding Angle:

DATA OF LAMP		PHOTOMETRIC DATA			
MODEL: (CPC) -1500-HR-JK-ME-TR-EP		Imax (cd)	330.1	S/MH (C0/180)	1.29
NOMINAL POWER (W)	7.142	LOR (%)	100.0	S/MH (C90/270)	1.28
RATED VOLTAGE (V)	DC 24V	TOTAL FLUX (lm)	1001.3	η UP, DN (C0-180)	1.1, 50.7
NOMINAL FLUX (lm)	1001.32	CIE CLASS	DIRECT	η UP, DN (C180-360)	0.9, 47.4
LAMPS INSIDE	1	η up (%)	2.0	CIBSE SHR NOM	1.25
TEST VOLTAGE (V)	DC 24V	η down (%)	98.0	CIBSE SHR MAX	1.35



C Range: 0 - 360DEG
 C Interval: 15.0DEG
 Test Speed: HIGH
 Temperature: 25.3°C
 Operators: DAMIN
 Test Date: 2023-10-26

γ Range: 0 - 180DEG
 γ Interval: 1.0DEG
 Test System: EVERFINE GO-2000B_V1 SYSTEM V2.00.471
 Humidity: 65.0%
 Test Distance: 4.880m [K=1.0000]
 Remarks:

ZONAL FLUX DIAGRAM

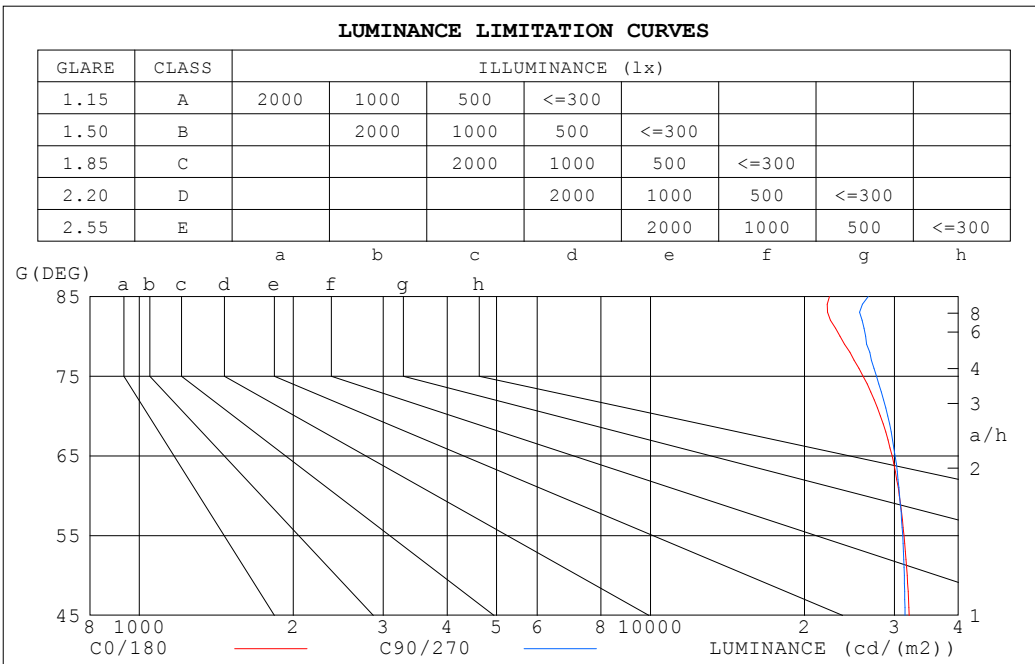
ZONAL FLUX DIAGRAM:

γ	C0	C45	C90	C135	C180	C225	C270	C315	γ	Φ zone	Φ total	%lum,lamp
10	323.1	318.9	308.3	317.6	324.0	320.5	306.9	306.8	0- 10	30.35	30.35	3.03,3.03
20	307.4	303.7	295.1	308.6	309.2	307.2	292.4	287.2	10- 20	87.39	117.7	11.8,11.8
30	281.9	279.4	272.8	289.7	284.7	284.8	269.0	258.4	20- 30	133.9	251.6	25.1,25.1
40	247.3	245.7	241.5	262.1	251.2	253.4	237.3	220.5	30- 40	163.9	415.5	41.5,41.5
50	204.2	202.9	201.6	226.1	209.1	213.5	197.0	174.1	40- 50	173.4	588.9	58.8,58.8
60	153.4	150.8	153.6	182.0	159.4	165.5	148.8	121.3	50- 60	160.3	749.2	74.8,74.8
70	96.31	92.87	99.49	131.6	103.6	111.3	94.63	70.43	60- 70	125.6	874.8	87.4,87.4
80	40.77	37.41	45.73	79.42	47.27	55.52	41.36	30.72	70- 80	76.67	951.5	95,95
90	6.455	4.875	7.682	35.67	9.959	14.31	7.565	5.719	80- 90	29.96	981.4	98,98
100	1.583	1.594	1.213	12.91	1.566	1.841	1.280	3.200	90-100	7.218	988.6	98.7,98.7
110	1.680	1.639	1.529	2.203	1.588	1.546	1.640	2.843	100-110	2.324	991.0	99,99
120	1.934	2.003	1.908	1.679	1.955	1.915	2.049	2.400	110-120	1.832	992.8	99.1,99.1
130	2.312	2.389	2.276	2.043	2.345	2.306	2.430	2.680	120-130	1.946	994.7	99.3,99.3
140	2.691	2.771	2.635	2.427	2.715	2.677	2.781	2.973	130-140	1.957	996.7	99.5,99.5
150	3.048	3.120	2.968	2.802	3.064	3.029	3.091	3.240	140-150	1.806	998.5	99.7,99.7
160	3.403	3.420	3.257	3.159	3.409	3.343	3.359	3.443	150-160	1.477	1000.0	99.9,99.9
170	3.696	3.674	3.538	3.483	3.707	3.617	3.586	3.622	160-170	0.9838	1001	100,100
180	3.874	3.823	3.680	3.698	3.871	3.794	3.701	3.717	170-180	0.3505	1001	100,100
DEG	LUMINOUS INTENSITY:cd									UNIT:lm		

C Range: 0 - 360DEG
 C Interval: 15.0DEG
 Test Speed: HIGH
 Temperature:25.3°C
 Operators:DAMIN
 Test Date:2023-10-26

γ Range: 0 - 180DEG
 γ Interval: 1.0DEG
 Test System:EVERFINE GO-2000B_V1 SYSTEM V2.00.471
 Humidity:65.0%
 Test Distance:4.880m [K=1.0000]
 Remarks:

LUMINANCE LIMITATION CURVES



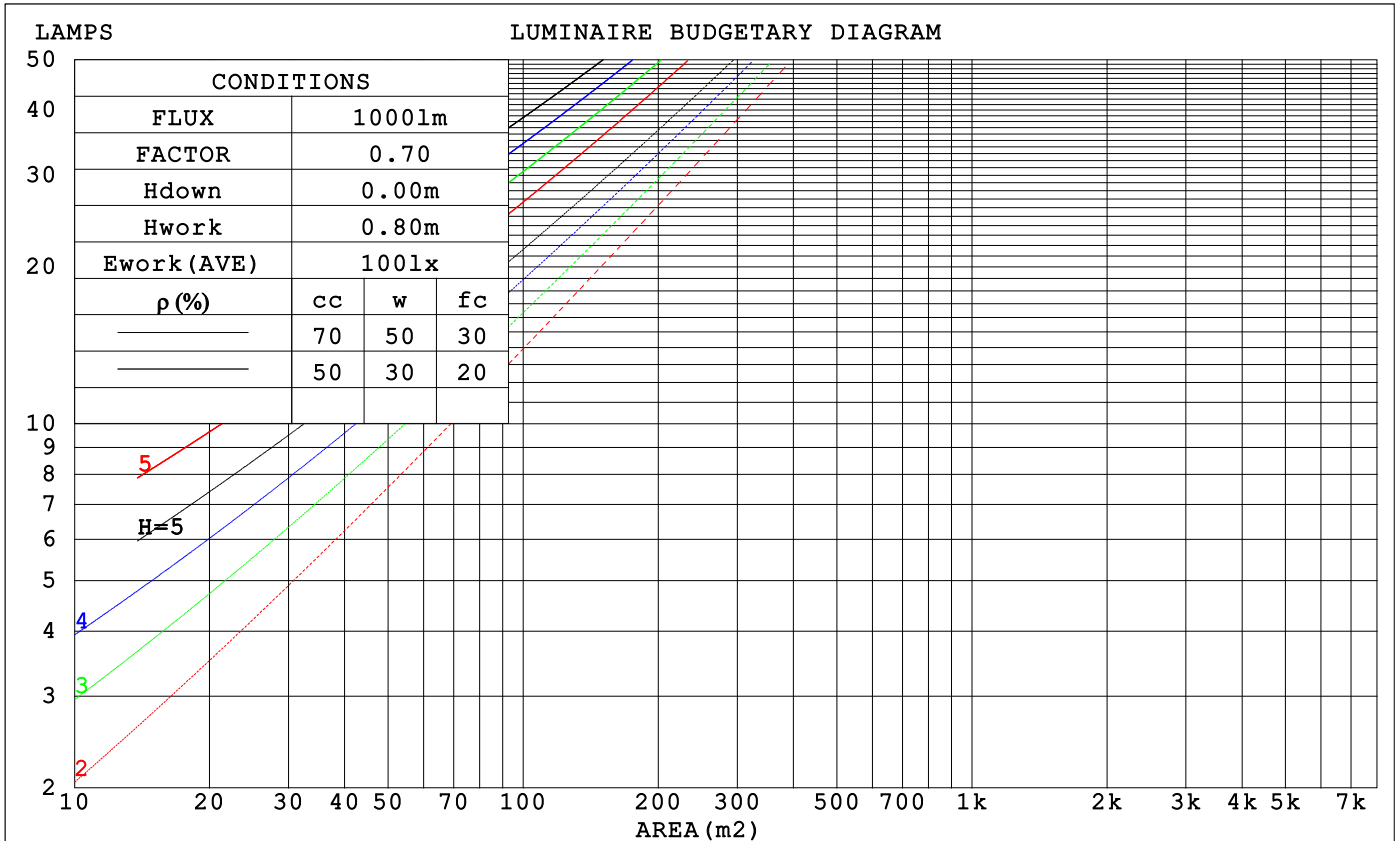
LUMINANCE cd/(m2)		
G (DEG)	C0/180	C90/270
85	22394	26644
80	23476	26334
75	26053	27670
70	28161	29090
65	29678	30106
60	30673	30718
55	31329	31136
50	31770	31360
45	32070	31476

C Range: 0 - 360DEG
 C Interval: 15.0DEG
 Test Speed: HIGH
 Temperature: 25.3°C
 Operators: DAMIN
 Test Date: 2023-10-26

γ Range: 0 - 180DEG
 γ Interval: 1.0DEG
 Test System: EVERFINE GO-2000B_V1 SYSTEM V2.00.471
 Humidity: 65.0%
 Test Distance: 4.880m [K=1.0000]
 Remarks:

CU AND LUMINAIRE BUDGETARY ESTIMATE DIAGRAM

ρ_{cc}	80%			70%			50%			30%			10%			0
ρ_w	50%	30%	10%	50%	30%	10%	50%	30%	10%	50%	30%	10%	50%	30%	10%	0
ρ_{fc}	20%			20%			20%			20%			20%			0
RCR	RCR:Room Cavity Ratio			Coefficients of Utilization(CU)												
0.0	1.19	1.19	1.19	1.16	1.16	1.16	1.10	1.10	1.10	1.05	1.05	1.05	1.00	1.00	1.00	.98
1.0	1.03	.98	.94	1.00	.96	.92	.95	.92	.89	.91	.88	.86	.87	.85	.83	.81
2.0	.89	.82	.76	.87	.80	.75	.83	.77	.73	.79	.75	.71	.76	.72	.69	.66
3.0	.78	.69	.63	.76	.68	.62	.73	.66	.60	.70	.64	.59	.67	.62	.58	.56
4.0	.69	.60	.53	.67	.59	.52	.64	.57	.51	.62	.55	.50	.59	.54	.49	.47
5.0	.61	.52	.45	.60	.51	.45	.58	.50	.44	.55	.49	.43	.53	.47	.43	.41
6.0	.55	.46	.39	.54	.45	.39	.52	.44	.38	.50	.43	.38	.48	.42	.37	.35
7.0	.50	.41	.35	.49	.40	.34	.47	.39	.34	.45	.39	.34	.44	.38	.33	.31
8.0	.45	.37	.31	.45	.36	.31	.43	.36	.30	.42	.35	.30	.40	.34	.30	.28
9.0	.42	.33	.28	.41	.33	.27	.40	.32	.27	.38	.32	.27	.37	.31	.27	.25
10.0	.38	.30	.25	.38	.30	.25	.37	.29	.25	.35	.29	.24	.34	.29	.24	.22



C Range: 0 - 360DEG
 C Interval: 15.0DEG
 Test Speed: HIGH
 Temperature: 25.3°C
 Operators: DAMIN
 Test Date: 2023-10-26

γ Range: 0 - 180DEG
 γ Interval: 1.0DEG
 Test System: EVERFINE GO-2000B_V1 SYSTEM V2.00.471
 Humidity: 65.0%
 Test Distance: 4.880m [K=1.0000]
 Remarks:

WEC AND CCEC

ρ_{cc}	80%			70%			50%			30%			10%			0
ρ_w	50%	30%	10%	50%	30%	10%	50%	30%	10%	50%	30%	10%	50%	30%	10%	0
ρ_{fc}	20%			20%			20%			20%			20%			0
RCR	RCR:Room Cavity Ratio						Wall Exitance Coefficients (WEC)									
0.0																
1.0	.327	.186	.059	.319	.182	.058	.305	.175	.056	.291	.168	.054	.279	.162	.052	
2.0	.302	.166	.051	.295	.163	.050	.283	.157	.049	.271	.152	.048	.260	.147	.046	
3.0	.277	.148	.044	.271	.145	.044	.260	.141	.043	.249	.137	.042	.239	.133	.041	
4.0	.255	.132	.039	.249	.130	.039	.239	.127	.038	.230	.123	.037	.221	.120	.037	
5.0	.235	.119	.035	.230	.118	.034	.221	.115	.034	.212	.112	.033	.204	.109	.033	
6.0	.217	.109	.031	.213	.107	.031	.205	.105	.030	.197	.102	.030	.190	.100	.030	
7.0	.201	.100	.028	.198	.098	.028	.190	.096	.028	.184	.094	.027	.177	.092	.027	
8.0	.188	.092	.026	.184	.091	.026	.178	.089	.025	.172	.087	.025	.166	.085	.025	
9.0	.176	.085	.024	.173	.084	.024	.167	.082	.023	.161	.081	.023	.156	.079	.023	
10.0	.165	.079	.022	.162	.078	.022	.157	.077	.022	.152	.075	.021	.147	.074	.021	

ρ_{cc}	80%			70%			50%			30%			10%			0
ρ_w	50%	30%	10%	50%	30%	10%	50%	30%	10%	50%	30%	10%	50%	30%	10%	0
ρ_{fc}	20%			20%			20%			20%			20%			0
RCR	RCR:Room Cavity Ratio						Ceiling Cavity Exitance Coefficients (CCEC)									
0.0	.206	.206	.206	.176	.176	.176	.120	.120	.120	.069	.069	.069	.022	.022	.022	
1.0	.197	.171	.148	.168	.147	.128	.115	.101	.088	.066	.059	.051	.021	.019	.017	
2.0	.189	.147	.112	.162	.127	.097	.111	.088	.068	.064	.051	.040	.021	.016	.013	
3.0	.181	.130	.089	.155	.112	.077	.107	.078	.054	.062	.045	.032	.020	.015	.010	
4.0	.174	.117	.073	.149	.101	.063	.103	.070	.045	.059	.041	.026	.019	.013	.009	
5.0	.166	.106	.062	.143	.092	.054	.098	.064	.038	.057	.038	.023	.018	.012	.007	
6.0	.159	.098	.054	.137	.085	.047	.094	.059	.033	.055	.035	.020	.018	.011	.007	
7.0	.152	.091	.048	.131	.079	.042	.090	.055	.030	.053	.033	.018	.017	.011	.006	
8.0	.146	.085	.044	.125	.074	.038	.087	.052	.027	.050	.031	.016	.016	.010	.005	
9.0	.139	.080	.041	.120	.070	.036	.083	.049	.025	.048	.029	.015	.016	.010	.005	
10.0	.134	.076	.038	.115	.066	.033	.080	.047	.024	.047	.028	.014	.015	.009	.005	

C Range: 0 - 360DEG
 C Interval: 15.0DEG
 Test Speed: HIGH
 Temperature: 25.3°C
 Operators: DAMIN
 Test Date: 2023-10-26

γ Range: 0 - 180DEG
 γ Interval: 1.0DEG
 Test System: EVERFINE GO-2000B_V1 SYSTEM V2.00.471
 Humidity: 65.0%
 Test Distance: 4.880m [K=1.0000]
 Remarks:

UGR(Unified Glare Rating) Table

ceiling/cavity	0.7	0.7	0.5	0.5	0.3	0.7	0.7	0.5	0.5	0.3
walls	0.5	0.3	0.5	0.3	0.3	0.5	0.3	0.5	0.3	0.3
working plane	0.2	0.2	0.2	0.2	0.2	0.2	0.2	0.2	0.2	0.2
Room dimensions	Viewed crosswise					Viewed endwise				
x = 2H y = 2H	24.7	26.2	25.0	26.5	26.7	24.5	26.0	24.8	26.3	26.5
3H	26.3	27.7	26.6	28.0	28.2	26.1	27.5	26.4	27.8	28.0
4H	26.9	28.2	27.2	28.5	28.8	26.7	28.1	27.1	28.3	28.6
6H	27.3	28.6	27.7	28.9	29.2	27.2	28.5	27.6	28.8	29.1
8H	27.5	28.7	27.8	29.0	29.3	27.4	28.6	27.8	28.9	29.3
12H	27.6	28.7	27.9	29.1	29.4	27.5	28.7	27.9	29.0	29.4
4H 2H	25.3	26.6	25.6	26.9	27.2	25.1	26.5	25.5	26.8	27.1
3H	27.0	28.2	27.4	28.5	28.9	26.8	28.0	27.2	28.3	28.7
4H	27.7	28.8	28.1	29.2	29.6	27.5	28.6	27.9	29.0	29.3
6H	28.3	29.3	28.7	29.6	30.1	28.1	29.1	28.5	29.4	29.9
8H	28.5	29.4	28.9	29.8	30.2	28.3	29.2	28.8	29.6	30.1
12H	28.6	29.5	29.1	29.9	30.3	28.5	29.3	29.0	29.8	30.2
8H 4H	27.9	28.8	28.4	29.2	29.7	27.8	28.6	28.2	29.1	29.5
6H	28.6	29.4	29.1	29.8	30.3	28.4	29.2	28.9	29.6	30.1
8H	28.9	29.6	29.4	30.1	30.6	28.7	29.4	29.2	29.8	30.3
12H	29.2	29.8	29.7	30.2	30.8	29.0	29.5	29.5	30.0	30.5
12H 4H	27.9	28.8	28.4	29.2	29.6	27.8	28.6	28.2	29.0	29.5
6H	28.7	29.3	29.2	29.8	30.3	28.5	29.1	29.0	29.6	30.1
8H	29.0	29.6	29.5	30.1	30.6	28.8	29.4	29.3	29.9	30.4
Variations with the observer position at spacings(CIE Pub.117):										
S = 1.0H	+ 0.2 / - 0.2					+ 0.1 / - 0.2				
1.5H	+ 0.2 / - 0.3					+ 0.1 / - 0.2				
2.0H	+ 0.2 / - 0.3					+ 0.2 / - 0.3				

CIE Pub.117, 1001 lm Total Lamp Luminous Flux Correct (8log(F/F0) = 0.0)
 Area: 0.01 m2

C Range: 0 - 360DEG
 C Interval: 15.0DEG
 Test Speed: HIGH
 Temperature:25.3°C
 Operators:DAMIN
 Test Date:2023-10-26

γ Range: 0 - 180DEG
 γ Interval: 1.0DEG
 Test System:EVERFINE GO-2000B_V1 SYSTEM V2.00.471
 Humidity:65.0%
 Test Distance:4.880m [K=1.0000]
 Remarks:

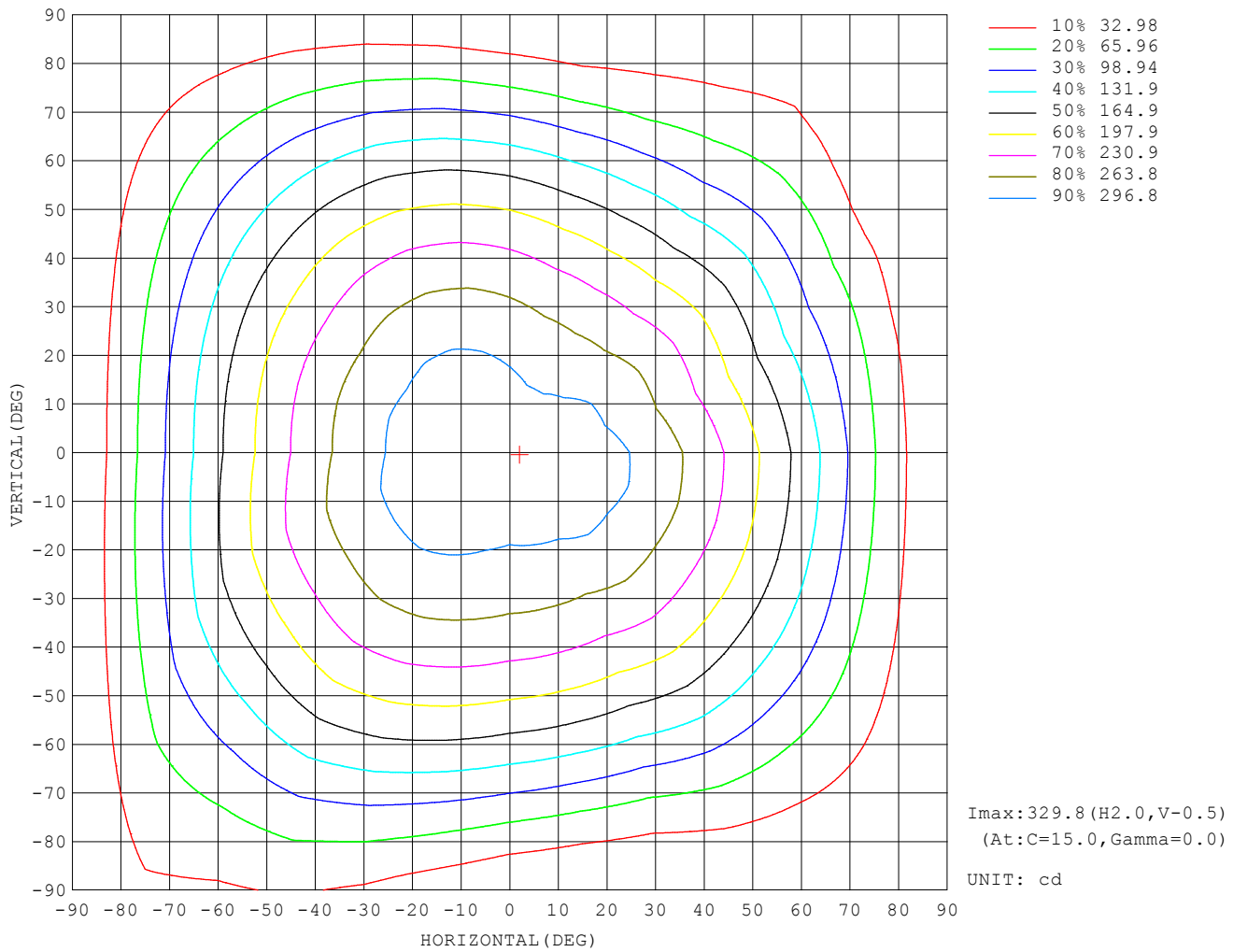
UTILIZATION FACTORS TABLE

REFLECTANCE										
Ceiling	0.8	0.8	0.8	0.7	0.7	0.7	0.5	0.5	0.5	0
Walls	0.7	0.5	0.3	0.7	0.5	0.3	0.7	0.5	0.3	0
Working plane	0.2	0.2	0.2	0.2	0.2	0.2	0.2	0.2	0.2	0
ROOM INDEX	UTILIZATION FACTORS (PERCENT) $k(RI) \times RCR = 5$									
$k = 0.60$	56	44	37	55	44	37	54	43	36	30
0.80	66	54	46	65	53	46	63	52	45	38
1.00	74	62	55	73	62	55	70	63	54	47
1.25	81	70	63	80	69	62	77	68	61	54
1.50	86	76	68	84	75	68	81	73	67	59
2.00	93	84	77	91	83	76	87	80	75	66
2.50	97	89	83	95	87	82	91	85	80	71
3.00	101	93	87	98	92	86	94	88	84	75
4.00	105	99	94	102	97	92	98	93	89	80
5.00	107	102	98	105	100	96	100	96	93	83
ROOM INDEX	UF(total)									Direct
According to DIN EN 13032-2 2004			Suspended				SHRNOM = 1.25			

C Range: 0 - 360DEG
 C Interval: 15.0DEG
 Test Speed: HIGH
 Temperature: 25.3°C
 Operators: DAMIN
 Test Date: 2023-10-26

γ Range: 0 - 180DEG
 γ Interval: 1.0DEG
 Test System: EVERFINE GO-2000B_V1 SYSTEM V2.00.471
 Humidity: 65.0%
 Test Distance: 4.880m [K=1.0000]
 Remarks:

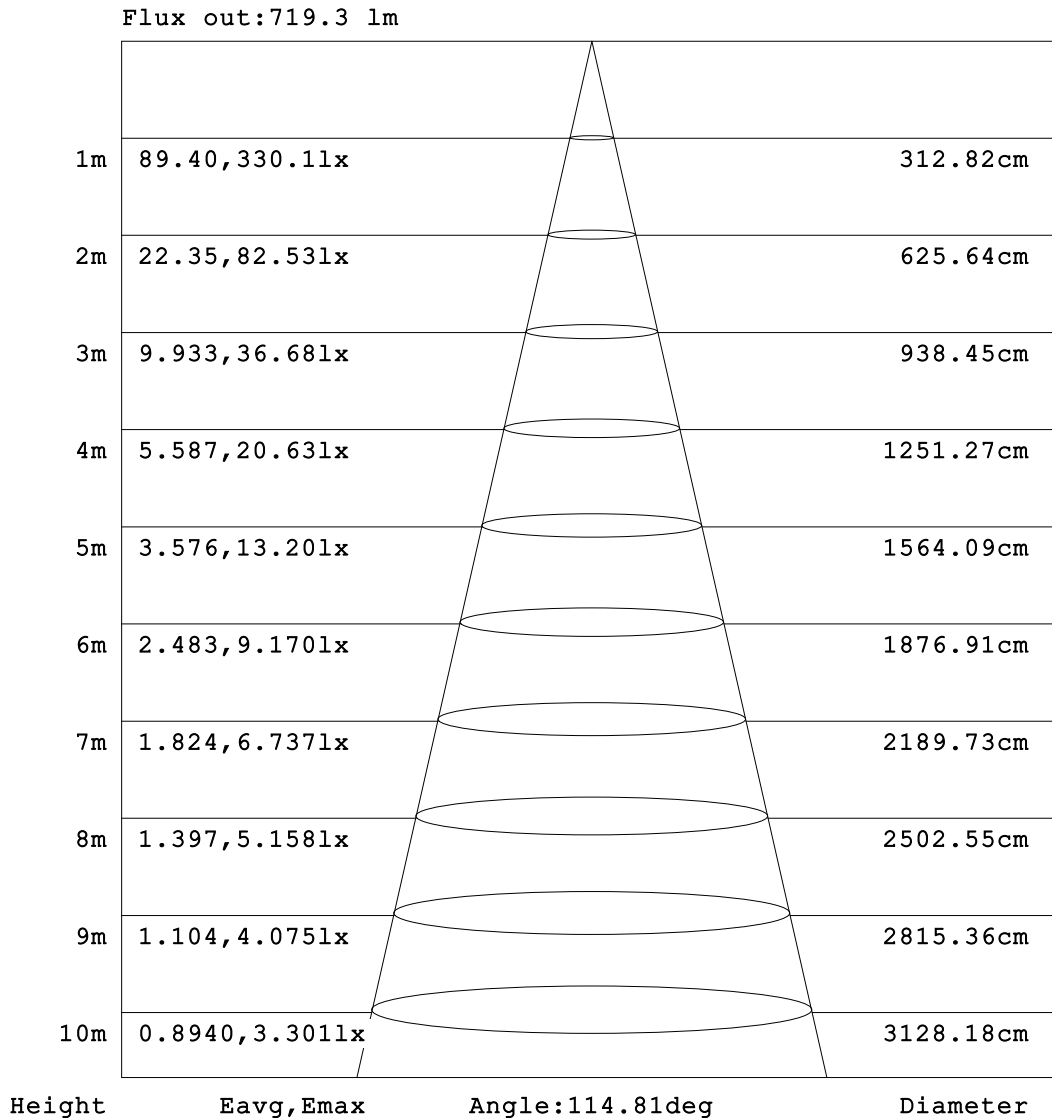
ISOCANDELA DIAGRAM



C Range: 0 - 360DEG
 C Interval: 15.0DEG
 Test Speed: HIGH
 Temperature: 25.3°C
 Operators: DAMIN
 Test Date: 2023-10-26

γ Range: 0 - 180DEG
 γ Interval: 1.0DEG
 Test System: EVERFINE GO-2000B_V1 SYSTEM V2.00.471
 Humidity: 65.0%
 Test Distance: 4.880m [K=1.0000]
 Remarks:

AAI Figure

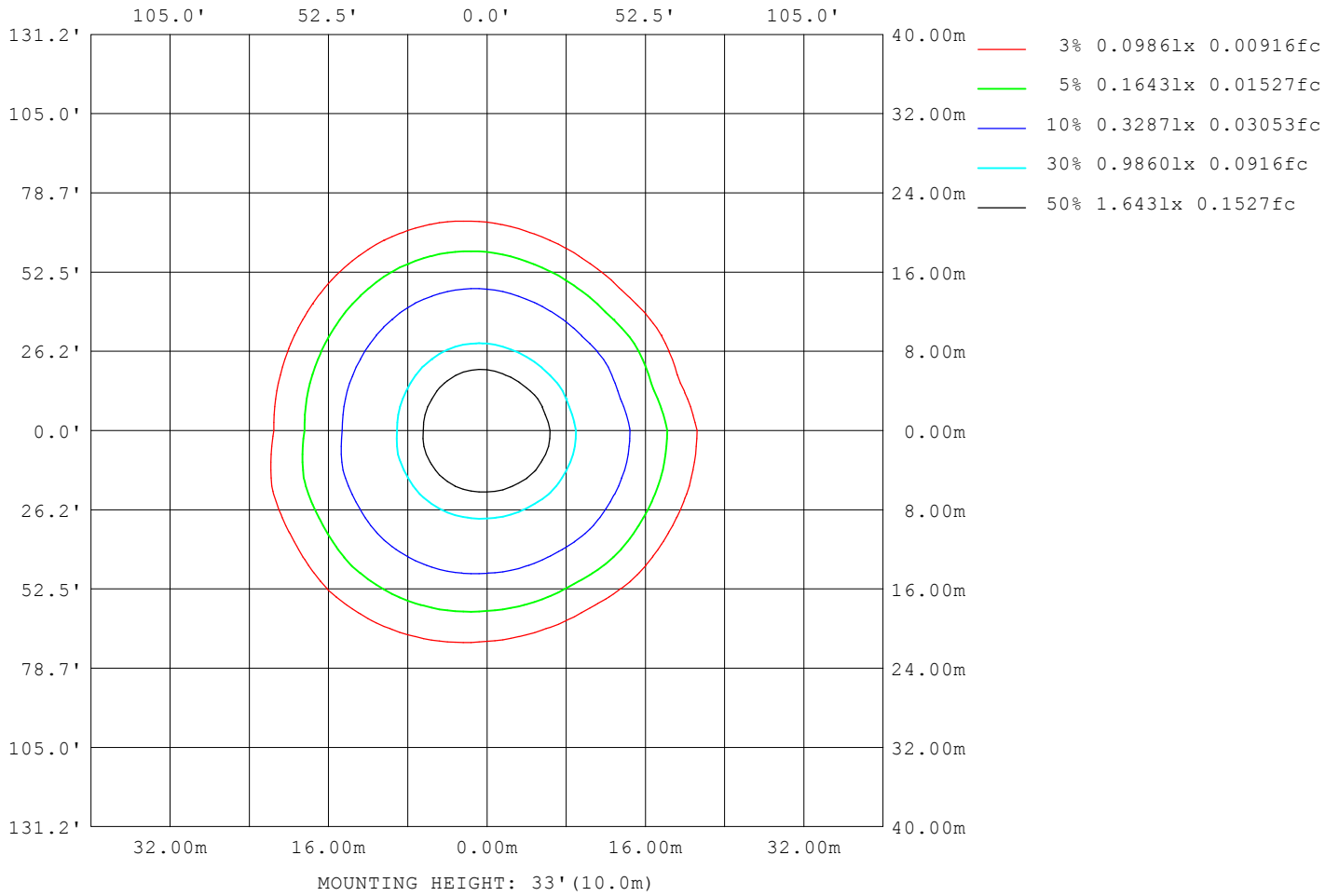


Note:The Curves indicate the illuminated area and the average illumination when the luminaire is at different distance.

C Range: 0 - 360DEG
 C Interval: 15.0DEG
 Test Speed: HIGH
 Temperature:25.3°C
 Operators:DAMIN
 Test Date:2023-10-26

γ Range: 0 - 180DEG
 γ Interval: 1.0DEG
 Test System:EVERFINE GO-2000B_V1 SYSTEM V2.00.471
 Humidity:65.0%
 Test Distance:4.880m [K=1.0000]
 Remarks:

ISOLUX DIAGRAM



C Range: 0 - 360DEG
 C Interval: 15.0DEG
 Test Speed: HIGH
 Temperature: 25.3°C
 Operators: DAMIN
 Test Date: 2023-10-26

γ Range: 0 - 180DEG
 γ Interval: 1.0DEG
 Test System: EVERFINE GO-2000B_V1 SYSTEM V2.00.471
 Humidity: 65.0%
 Test Distance: 4.880m [K=1.0000]
 Remarks:

LED Avg.L Report

NAME: LED Strip	TYPE: Indoor lighting	WEIGHT: 75g
SPEC.: 2835 098LED	DIM.: 500*10*1.2MM	SERIAL No.: 20231025022
MFR.: EVERFINE	SUR.: 500*10MM	Shielding Angle:

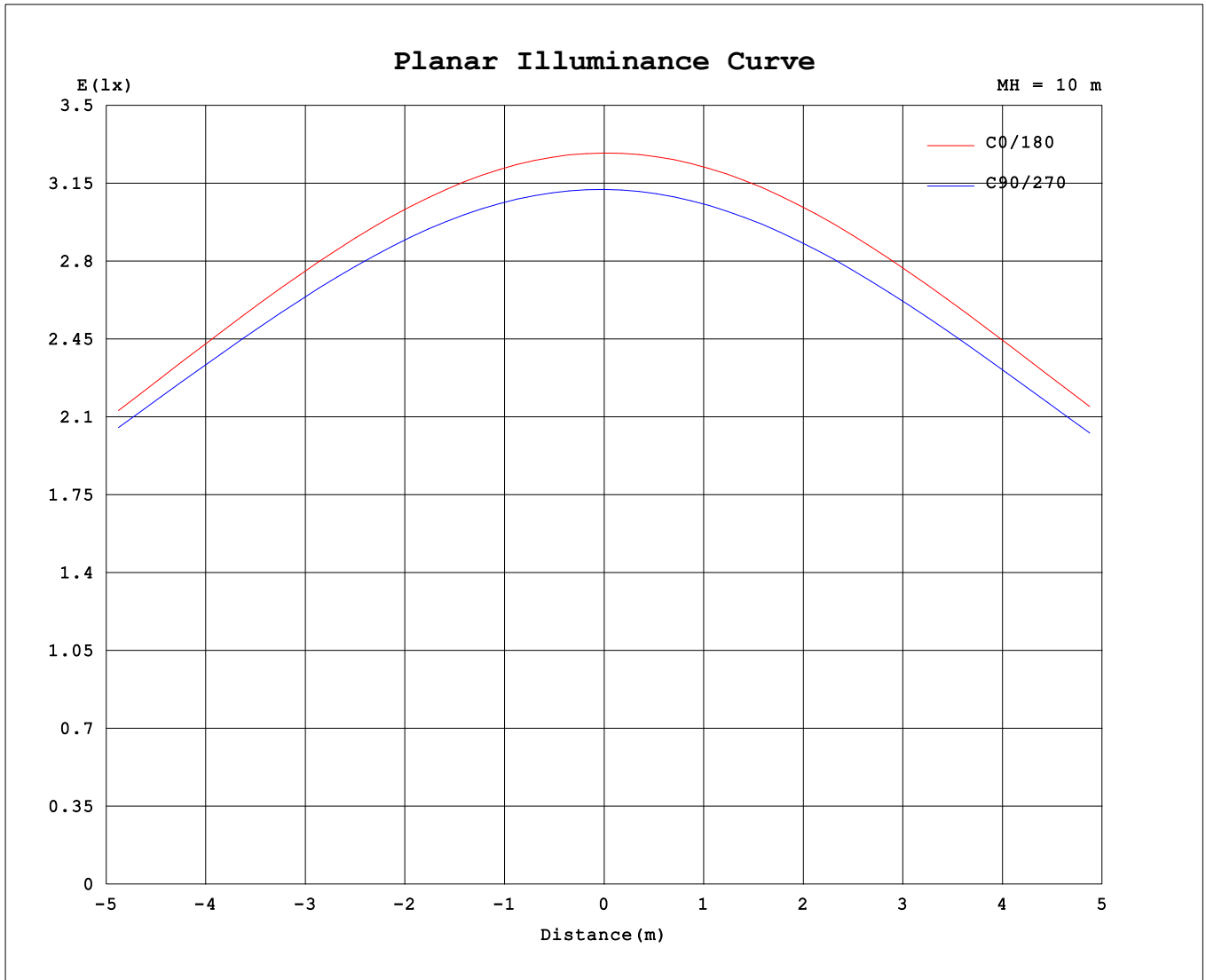
AvgL	cd/m2
L_0~180 (65) av	30465
L_0~180 (75) av	27495
L_0~180 (85) av	25132
L_90~270 (65) av	29503
L_90~270 (75) av	26678
L_90~270 (85) av	25272
L_45 (65) av	30362
L_45 (75) av	29094
L_45 (85) av	34322

Standard: GB/T 29293-2012

C Range: 0 - 360DEG
 C Interval: 15.0DEG
 Test Speed: HIGH
 Temperature:25.3°C
 Operators:DAMIN
 Test Date:2023-10-26

γ Range: 0 - 180DEG
 γ Interval: 1.0DEG
 Test System:EVERFINE GO-2000B_V1 SYSTEM V2.00.471
 Humidity:65.0%
 Test Distance:4.880m [K=1.0000]
 Remarks:

Planar Illuminance Curve



C Range: 0 - 360DEG
 C Interval: 15.0DEG
 Test Speed: HIGH
 Temperature: 25.3°C
 Operators: DAMIN
 Test Date: 2023-10-26

γ Range: 0 - 180DEG
 γ Interval: 1.0DEG
 Test System: EVERFINE GO-2000B_V1 SYSTEM V2.00.471
 Humidity: 65.0%
 Test Distance: 4.880m [K=1.0000]
 Remarks:

LUMINOUS DISTRIBUTION INTENSITY DATA

Table--1

UNIT: cd

C (DEG) \ γ (DEG)	0	15	30	45	60	75	90	105	120	135	150	165	180	195	210	225	240	255	270
0	329	330	325	324	320	316	312	310	312	317	323	325	329	330	325	324	320	316	312
5	327	329	323	323	318	315	311	311	314	318	324	325	328	329	324	324	320	316	311
10	323	325	319	319	313	311	308	309	312	318	322	323	324	325	320	320	317	312	307
15	317	318	313	312	307	305	303	305	309	314	318	319	318	318	315	315	312	307	301
20	307	309	305	304	298	296	295	298	303	309	311	312	309	310	307	307	305	299	292
25	296	298	294	293	286	285	285	289	295	300	302	302	298	299	296	297	295	289	282
30	282	284	280	279	272	272	273	278	285	290	290	291	285	285	283	285	283	277	269
35	266	267	264	264	256	257	258	265	272	277	276	277	269	270	268	270	269	263	254
40	247	249	246	246	238	239	241	249	257	262	261	261	251	252	251	253	252	246	237
45	227	228	225	226	218	219	223	231	240	245	243	243	231	232	232	235	234	228	218
50	204	205	202	203	195	197	202	211	221	226	223	223	209	210	211	213	213	207	197
55	180	180	178	178	170	173	179	189	199	205	201	201	185	187	187	190	190	184	174
60	153	153	150	151	143	147	154	165	176	182	177	177	159	161	162	165	166	160	149
65	125	125	122	122	115	119	127	139	151	157	152	152	132	134	136	139	139	134	122
70	96.3	95.9	92.5	92.9	85.6	91.0	99.5	113	124	132	125	125	104	106	108	111	112	106	94.6
75	67.4	66.7	63.7	63.6	57.1	62.4	71.6	85.5	98.0	105	98.4	98.7	74.9	77.2	79.6	83.1	83.9	78.2	66.5
80	40.8	40.2	37.8	37.4	32.3	36.6	45.7	59.7	72.8	79.4	72.8	72.7	47.3	49.5	51.7	55.5	56.1	51.5	41.4
85	19.5	19.5	17.5	17.4	14.0	16.4	23.2	36.3	49.3	55.7	48.9	48.7	24.3	26.2	28.3	31.3	31.8	27.8	20.8
90	6.45	6.51	5.05	4.88	4.02	4.49	7.68	17.4	29.6	35.7	29.8	29.3	9.96	11.4	12.3	14.3	14.0	11.2	7.57
95	2.13	2.10	1.92	1.72	1.81	1.73	1.16	7.84	17.8	22.6	17.9	16.9	3.68	4.33	4.72	5.71	4.78	3.85	1.23
100	1.58	1.56	1.56	1.59	1.45	1.29	1.21	2.62	9.26	12.9	9.23	8.30	1.57	1.72	1.73	1.84	1.60	1.57	1.28
105	1.88	1.61	1.45	1.44	1.49	1.43	1.35	1.29	3.76	6.12	3.56	2.96	1.46	1.46	1.47	1.46	1.42	1.38	1.44
110	1.68	1.61	1.62	1.64	1.68	1.63	1.53	1.39	1.56	2.20	1.52	1.47	1.59	1.58	1.58	1.55	1.53	1.54	1.64
115	1.76	1.77	1.80	1.81	1.87	1.83	1.71	1.58	1.51	1.54	1.58	1.58	1.76	1.75	1.75	1.72	1.73	1.73	1.85
120	1.93	1.95	1.99	2.00	2.06	2.03	1.91	1.78	1.67	1.68	1.72	1.72	1.95	1.94	1.95	1.91	1.93	1.93	2.05
125	2.12	2.14	2.19	2.20	2.25	2.19	2.09	1.97	1.87	1.84	1.89	1.90	2.15	2.14	2.14	2.11	2.13	2.13	2.24
130	2.31	2.33	2.38	2.39	2.43	2.38	2.28	2.17	2.06	2.04	2.09	2.09	2.34	2.33	2.34	2.31	2.33	2.32	2.43
135	2.50	2.52	2.57	2.58	2.62	2.57	2.46	2.36	2.26	2.24	2.28	2.27	2.53	2.52	2.52	2.49	2.51	2.50	2.61
140	2.69	2.73	2.76	2.77	2.80	2.75	2.64	2.54	2.45	2.43	2.46	2.47	2.71	2.70	2.71	2.68	2.70	2.68	2.78
145	2.87	2.91	2.94	2.95	2.96	2.92	2.81	2.72	2.63	2.61	2.65	2.66	2.89	2.88	2.89	2.86	2.88	2.85	2.94
150	3.05	3.09	3.12	3.12	3.12	3.08	2.97	2.90	2.82	2.80	2.84	2.85	3.06	3.05	3.06	3.03	3.05	3.01	3.09
155	3.23	3.26	3.28	3.28	3.26	3.23	3.12	3.06	2.99	2.98	3.02	3.03	3.24	3.21	3.22	3.19	3.21	3.16	3.23
160	3.40	3.42	3.43	3.42	3.40	3.36	3.26	3.22	3.16	3.16	3.19	3.21	3.41	3.37	3.37	3.34	3.36	3.30	3.36
165	3.56	3.56	3.56	3.55	3.52	3.51	3.42	3.40	3.33	3.33	3.36	3.38	3.57	3.51	3.52	3.49	3.50	3.44	3.48
170	3.70	3.69	3.68	3.67	3.64	3.62	3.54	3.53	3.47	3.48	3.52	3.54	3.71	3.65	3.65	3.62	3.63	3.55	3.59
175	3.80	3.79	3.77	3.77	3.71	3.70	3.63	3.63	3.59	3.62	3.65	3.68	3.81	3.76	3.75	3.72	3.73	3.64	3.67
180	3.87	3.84	3.82	3.82	3.76	3.76	3.68	3.69	3.67	3.70	3.74	3.76	3.87	3.83	3.82	3.79	3.79	3.70	3.70

C Range: 0 - 360DEG
 C Interval: 15.0DEG
 Test Speed: HIGH
 Temperature: 25.3°C
 Operators: DAMIN
 Test Date: 2023-10-26

γ Range: 0 - 180DEG
 γ Interval: 1.0DEG
 Test System: EVERFINE GO-2000B_V1 SYSTEM V2.00.471
 Humidity: 65.0%
 Test Distance: 4.880m [K=1.0000]
 Remarks:

LUMINOUS DISTRIBUTION INTENSITY DATA

Table--2

UNIT: cd

C (DEG) \ γ (DEG)	285	300	315	330	345														
0	310	312	317	323	325														
5	308	309	313	320	322														
10	303	303	307	314	317														
15	295	295	298	306	308														
20	286	284	287	296	298														
25	274	272	274	283	284														
30	260	257	258	267	268														
35	244	240	241	250	250														
40	226	221	220	230	230														
45	206	200	198	208	208														
50	184	176	174	184	183														
55	160	152	148	158	157														
60	135	125	121	130	130														
65	108	98.7	94.7	103	102														
70	80.3	72.3	70.4	76.3	75.0														
75	54.3	49.3	49.4	53.4	52.0														
80	31.9	30.4	30.7	34.1	18.3														
85	13.0	14.8	15.4	18.6	16.3														
90	5.03	5.93	5.72	5.69	8.78														
95	3.22	5.00	4.20	5.27	5.15														
100	1.59	2.53	3.20	3.03	2.89														
105	1.54	1.78	3.06	2.41	2.09														
110	1.73	1.88	2.84	2.79	2.28														
115	1.93	2.06	2.42	2.85	2.64														
120	2.13	2.26	2.40	2.56	2.39														
125	2.33	2.44	2.53	2.54	2.58														
130	2.51	2.61	2.68	2.65	2.66														
135	2.66	2.76	2.83	2.80	2.80														
140	2.82	2.90	2.97	2.96	2.96														
145	2.97	3.05	3.11	3.11	3.11														
150	3.11	3.18	3.24	3.25	3.25														
155	3.24	3.30	3.34	3.37	3.38														
160	3.36	3.42	3.44	3.48	3.49														
165	3.47	3.52	3.54	3.58	3.60														
170	3.57	3.61	3.62	3.66	3.68														
175	3.62	3.66	3.68	3.73	3.76														
180	3.68	3.68	3.72	3.75	3.78														

C Range: 0 - 360DEG
 C Interval: 15.0DEG
 Test Speed: HIGH
 Temperature:25.3°C
 Operators:DAMIN
 Test Date:2023-10-26

γ Range: 0 - 180DEG
 γ Interval: 1.0DEG
 Test System:EVERFINE GO-2000B_V1 SYSTEM V2.00.471
 Humidity:65.0%
 Test Distance:4.880m [K=1.0000]
 Remarks: