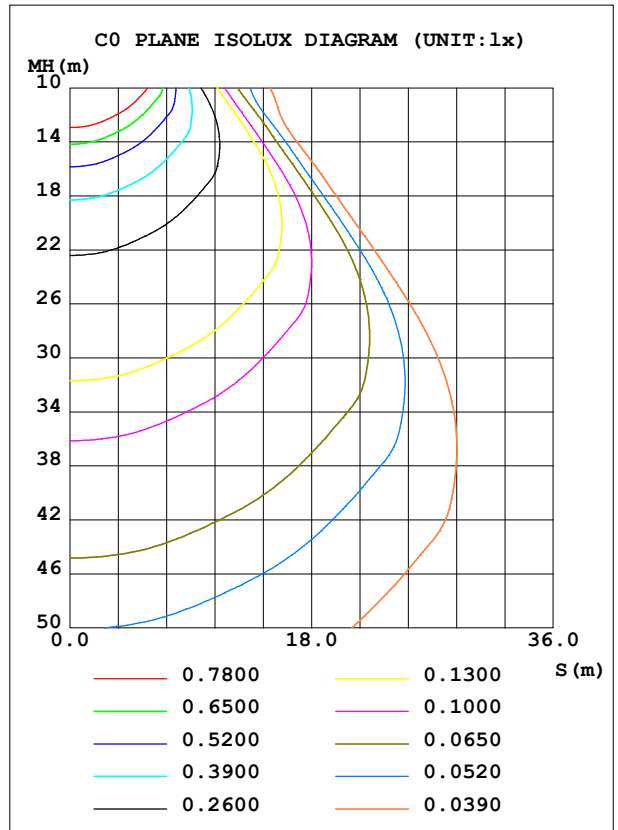
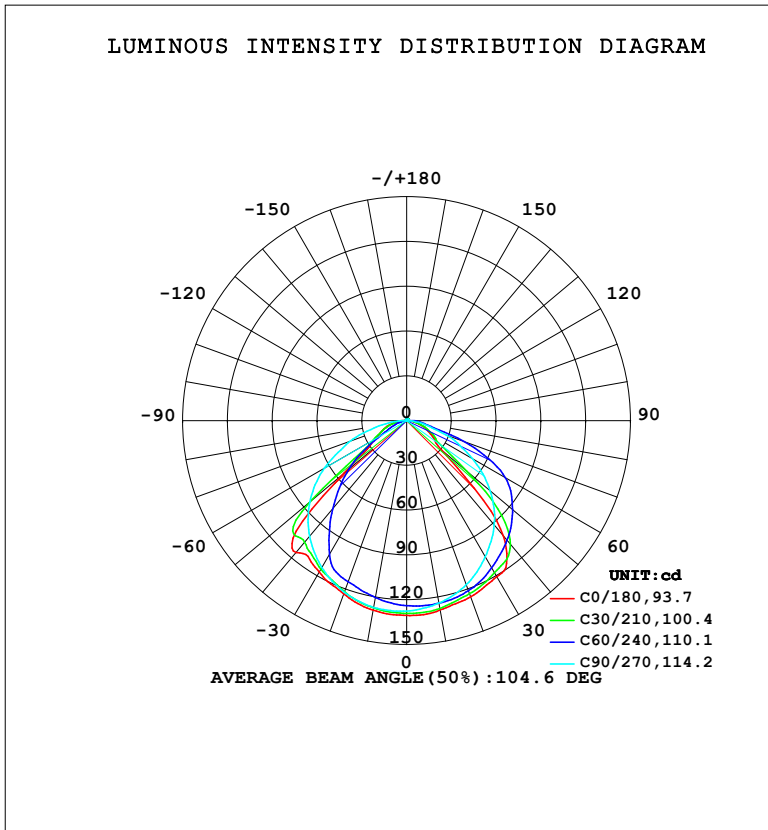


LUMINAIRE PHOTOMETRIC TEST REPORT

NAME: LED Strip	TYPE: Indoor lighting	WEIGHT: 75g
SPEC.: LED	DIM.: 500*16*16MM	SERIAL No.: 20231004090
MFR.: Hide-a-lite	SUR.: 500*16MM	Shielding Angle:

DATA OF LAMP		PHOTOMETRIC DATA			
HVFLE02000000-005-EU-UR-HQ1-EP (CF)		Imax (cd)	130.6	S/MH (C0/180)	1.35
NOMINAL POWER (W)	3.59759	LOR (%)	100.0	S/MH (C90/270)	1.32
RATED VOLTAGE (V)	AC 230V	TOTAL FLUX (lm)	340.52	<input type="checkbox"/> UP, DN (C0-180)	1.0, 46.5
NOMINAL FLUX (lm)	340.522	CIE CLASS	DIRECT	<input type="checkbox"/> UP, DN (C180-360)	0.9, 51.6
LAMPS INSIDE	1	<input type="checkbox"/> up (%)	1.9	CIBSE SHR NOM	1.25
TEST VOLTAGE (V)	AC 230V	<input type="checkbox"/> down (%)	98.1	CIBSE SHR MAX	1.35



C Range: 0 - 360DEG
 C Interval: 15.0DEG
 Test Speed: HIGH
 Temperature: 25.3°C
 Operators: DAMIN
 Test Date: 2023-10-12

Range: 0 - 180DEG
 Interval: 1.0DEG
 Test System: EVERFINE GO-2000B_V1 SYSTEM V2.00.471
 Humidity: 65.0%
 Test Distance: 4.880m [K=1.0000]
 Remarks:

ZONAL FLUX DIAGRAM

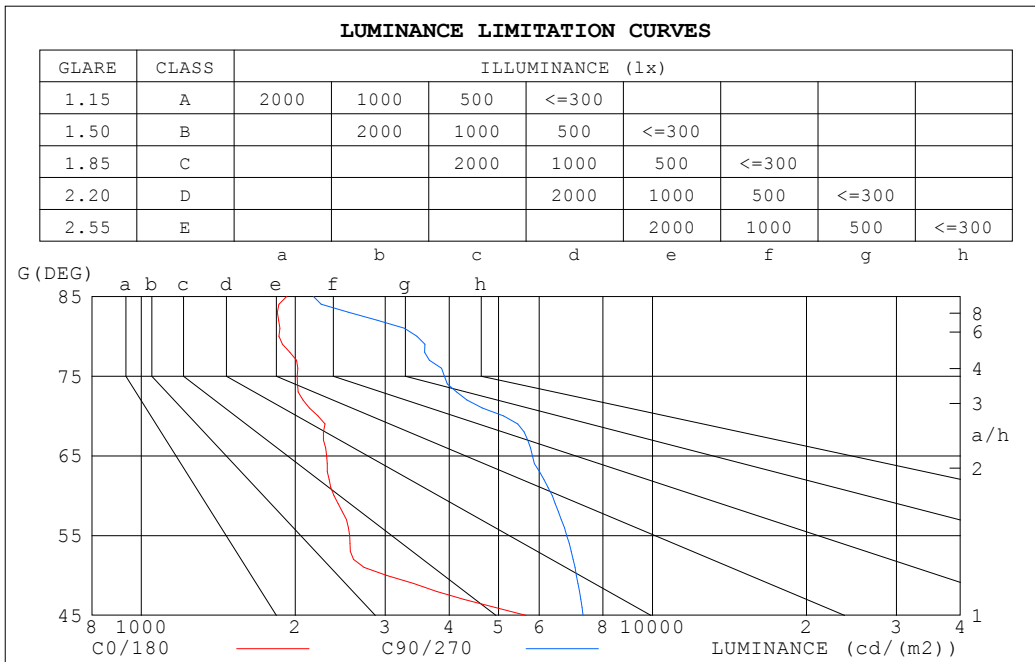
ZONAL FLUX DIAGRAM:

☐	C0	C45	C90	C135	C180	C225	C270	C315	☐	☐ zone	☐ total	%lum,lamp
10	128.8	127.4	124.1	124.1	129.0	127.0	127.1	128.8	0- 10	12.17	12.17	3.57,3.57
20	125.6	122.0	117.0	115.6	123.5	121.4	122.3	125.7	10- 20	35.12	47.30	13.9,13.9
30	120.8	115.0	105.4	105.7	117.3	112.3	113.6	119.3	20- 30	54.32	101.6	29.8,29.8
40	100.9	105.2	91.34	96.72	115.3	102.5	101.1	111.4	30- 40	67.87	169.5	49.8,49.8
50	31.01	84.17	73.00	62.67	54.62	95.47	84.60	100.1	40- 50	68.74	238.2	70,70
60	19.06	24.04	50.91	26.63	24.59	28.39	63.60	61.06	50- 60	47.36	285.6	83.9,83.9
70	12.12	13.60	27.99	11.97	16.08	15.45	40.09	18.09	60- 70	29.64	315.2	92.6,92.6
80	5.161	5.693	9.615	4.443	8.238	6.677	16.65	7.925	70- 80	14.07	329.3	96.7,96.7
90	1.357	1.410	1.056	1.152	2.222	1.236	2.568	3.010	80- 90	4.645	333.9	98.1,98.1
100	1.069	1.011	0.4912	0.6887	0.6197	0.5111	0.4681	0.8855	90-100	1.150	335.1	98.4,98.4
110	1.171	1.108	0.6578	0.7782	0.5675	0.5881	0.5700	0.9508	100-110	0.8235	335.9	98.6,98.6
120	1.302	1.228	0.8049	0.9412	0.7158	0.7620	0.7268	1.070	110-120	0.8772	336.8	98.9,98.9
130	1.410	1.273	0.9532	1.066	0.8985	0.9214	0.8886	1.157	120-130	0.9167	337.7	99.2,99.2
140	1.447	1.283	1.111	1.146	1.047	1.067	1.047	1.211	130-140	0.8740	338.6	99.4,99.4
150	1.463	1.339	1.263	1.260	1.147	1.179	1.217	1.303	140-150	0.7716	339.3	99.7,99.7
160	1.537	1.429	1.394	1.397	1.306	1.315	1.366	1.408	150-160	0.6173	340.0	99.8,99.8
170	1.523	1.515	1.508	1.533	1.484	1.464	1.491	1.519	160-170	0.4118	340.4	100,100
180	1.577	1.555	1.564	1.584	1.571	1.549	1.561	1.586	170-180	0.1480	340.5	100,100
DEG	LUMINOUS INTENSITY:cd									UNIT:lm		

C Range: 0 - 360DEG
 C Interval: 15.0DEG
 Test Speed: HIGH
 Temperature:25.3°C
 Operators:DAMIN
 Test Date:2023-10-12

☐ Range: 0 - 180DEG
 ☐ Interval: 1.0DEG
 Test System:EVERFINE GO-2000B_V1 SYSTEM V2.00.471
 Humidity:65.0%
 Test Distance:4.880m [K=1.0000]
 Remarks:

LUMINANCE LIMITATION CURVES



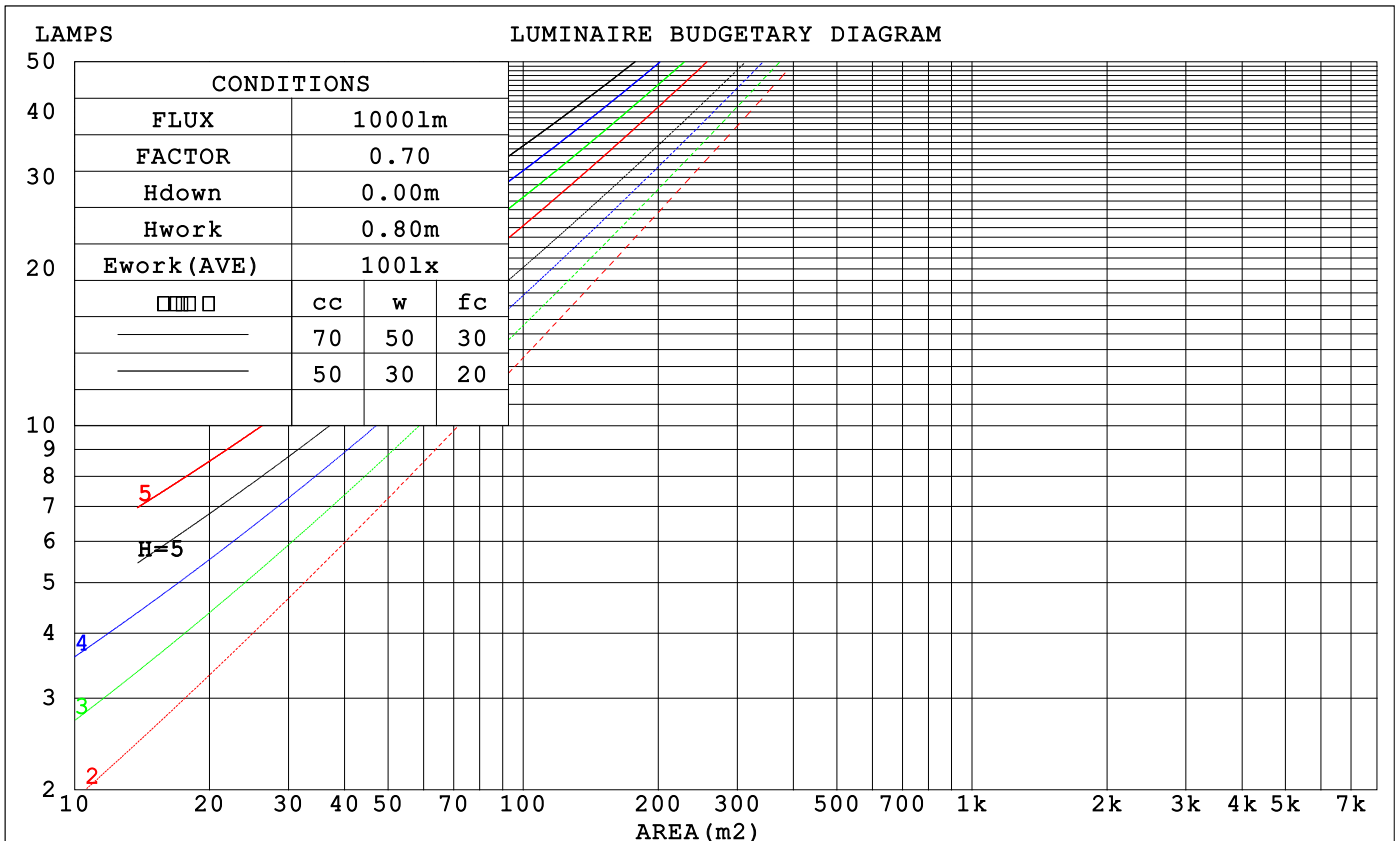
LUMINANCE cd/(m2)		
G (DEG)	C0/180	C90/270
85	1925	2172
80	1857	3461
75	2017	3917
70	2215	5114
65	2305	5821
60	2383	6363
55	2555	6798
50	3015	7098
45	5657	7317

C Range: 0 - 360DEG
 C Interval: 15.0DEG
 Test Speed: HIGH
 Temperature: 25.3°C
 Operators: DAMIN
 Test Date: 2023-10-12

Range: 0 - 180DEG
 Interval: 1.0DEG
 Test System: EVERFINE GO-2000B_V1 SYSTEM V2.00.471
 Humidity: 65.0%
 Test Distance: 4.880m [K=1.0000]
 Remarks:

CU AND LUMINAIRE BUDGETARY ESTIMATE DIAGRAM

□cc	80%			70%			50%			30%			10%			0
□w	50%	30%	10%	50%	30%	10%	50%	30%	10%	50%	30%	10%	50%	30%	10%	0
□fc	20%			20%			20%			20%			20%			0
RCR	RCR:Room Cavity Ratio			Coefficients of Utilization(CU)												
0.0	1.19	1.19	1.19	1.16	1.16	1.16	1.10	1.10	1.10	1.05	1.05	1.05	1.00	1.00	1.00	.98
1.0	1.05	1.01	.98	1.03	.99	.96	.98	.95	.92	.94	.91	.89	.90	.88	.86	.84
2.0	.93	.86	.81	.91	.85	.80	.87	.82	.78	.83	.79	.76	.80	.77	.74	.72
3.0	.82	.75	.68	.80	.73	.68	.77	.71	.66	.74	.69	.65	.72	.67	.64	.61
4.0	.73	.65	.59	.72	.64	.58	.69	.62	.57	.67	.61	.56	.64	.59	.55	.53
5.0	.66	.57	.51	.65	.57	.51	.62	.55	.50	.60	.54	.49	.58	.53	.48	.46
6.0	.59	.51	.45	.58	.50	.44	.56	.49	.44	.55	.48	.43	.53	.47	.43	.41
7.0	.54	.46	.40	.53	.45	.39	.51	.44	.39	.50	.43	.39	.48	.43	.38	.36
8.0	.49	.41	.35	.49	.41	.35	.47	.40	.35	.46	.39	.35	.44	.39	.34	.32
9.0	.45	.37	.32	.45	.37	.32	.43	.36	.32	.42	.36	.31	.41	.35	.31	.29
10.0	.42	.34	.29	.41	.34	.29	.40	.33	.29	.39	.33	.28	.38	.32	.28	.26



C Range: 0 - 360DEG
 C Interval: 15.0DEG
 Test Speed: HIGH
 Temperature:25.3°C
 Operators:DAMIN
 Test Date:2023-10-12

□ Range: 0 - 180DEG
 □ Interval: 1.0DEG
 Test System:EVERFINE GO-2000B_V1 SYSTEM V2.00.471
 Humidity:65.0%
 Test Distance:4.880m [K=1.0000]
 Remarks:

WEC AND CCEC

□cc	80%			70%			50%			30%			10%			0
□w	50%	30%	10%	50%	30%	10%	50%	30%	10%	50%	30%	10%	50%	30%	10%	0
□fc	20%			20%			20%			20%			20%			0
RCR	RCR:Room Cavity Ratio						Wall Exitance Coefficients (WEC)									
0.0	.279	.159	.050	.272	.155	.049	.258	.148	.047	.245	.141	.045	.232	.135	.043	
1.0	.266	.146	.045	.259	.143	.044	.247	.137	.043	.235	.132	.041	.225	.127	.040	
2.0	.249	.133	.040	.243	.130	.039	.232	.126	.038	.222	.122	.037	.213	.118	.036	
3.0	.232	.121	.036	.227	.119	.035	.217	.115	.034	.208	.112	.034	.200	.109	.033	
4.0	.217	.111	.032	.212	.109	.032	.203	.106	.031	.195	.103	.031	.188	.100	.030	
5.0	.203	.102	.029	.199	.100	.029	.191	.098	.028	.183	.095	.028	.177	.093	.028	
6.0	.190	.094	.027	.186	.093	.026	.179	.091	.026	.172	.088	.026	.166	.086	.025	
7.0	.178	.087	.024	.175	.086	.024	.169	.084	.024	.163	.082	.024	.157	.081	.023	
8.0	.168	.081	.023	.165	.080	.023	.159	.079	.022	.154	.077	.022	.149	.075	.022	
9.0	.158	.076	.021	.156	.075	.021	.150	.074	.021	.146	.072	.021	.141	.071	.020	
10.0	.158	.076	.021	.156	.075	.021	.150	.074	.021	.146	.072	.021	.141	.071	.020	

□cc	80%			70%			50%			30%			10%			0
□w	50%	30%	10%	50%	30%	10%	50%	30%	10%	50%	30%	10%	50%	30%	10%	0
□fc	20%			20%			20%			20%			20%			0
RCR	RCR:Room Cavity Ratio						Ceiling Cavity Exitance Coefficients (CCEC)									
0.0	.205	.205	.205	.175	.175	.175	.120	.120	.120	.069	.069	.069	.022	.022	.022	
1.0	.193	.171	.152	.165	.147	.131	.113	.101	.090	.065	.059	.052	.021	.019	.017	
2.0	.184	.147	.116	.157	.127	.100	.108	.088	.070	.062	.051	.041	.020	.016	.013	
3.0	.176	.129	.092	.150	.111	.080	.103	.077	.056	.060	.045	.033	.019	.015	.011	
4.0	.168	.116	.076	.144	.100	.066	.099	.070	.046	.057	.041	.027	.018	.013	.009	
5.0	.161	.105	.064	.138	.091	.056	.095	.064	.040	.055	.037	.023	.018	.012	.008	
6.0	.154	.097	.056	.132	.084	.049	.091	.059	.034	.053	.035	.020	.017	.011	.007	
7.0	.147	.090	.050	.127	.078	.043	.088	.055	.031	.051	.032	.018	.016	.011	.006	
8.0	.141	.084	.045	.122	.073	.039	.084	.051	.028	.049	.030	.017	.016	.010	.005	
9.0	.135	.079	.041	.117	.069	.036	.081	.048	.026	.047	.029	.015	.015	.009	.005	
10.0	.130	.075	.038	.112	.065	.033	.078	.046	.024	.045	.027	.014	.015	.009	.005	

C Range: 0 - 360DEG
 C Interval: 15.0DEG
 Test Speed: HIGH
 Temperature:25.3°C
 Operators:DAMIN
 Test Date:2023-10-12

□ Range: 0 - 180DEG
 □ Interval: 1.0DEG
 Test System:EVERFINE GO-2000B_V1 SYSTEM V2.00.471
 Humidity:65.0%
 Test Distance:4.880m [K=1.0000]
 Remarks:

UGR(Unified Glare Rating) Table

ceiling/cavity	0.7	0.7	0.5	0.5	0.3	0.7	0.7	0.5	0.5	0.3
walls	0.5	0.3	0.5	0.3	0.3	0.5	0.3	0.5	0.3	0.3
working plane	0.2	0.2	0.2	0.2	0.2	0.2	0.2	0.2	0.2	0.2
Room dimensions	Viewed crosswise					Viewed endwise				
x = 2H y = 2H	20.1	21.5	20.4	21.7	22.0	24.3	25.7	24.6	26.0	26.2
3H	20.6	21.9	20.9	22.1	22.4	25.4	26.6	25.7	26.9	27.2
4H	20.8	22.0	21.1	22.3	22.6	25.5	26.7	25.8	27.0	27.3
6H	21.0	22.1	21.3	22.4	22.8	25.6	26.7	25.9	27.0	27.3
8H	21.1	22.2	21.4	22.5	22.8	25.6	26.7	25.9	27.0	27.3
12H	21.1	22.2	21.5	22.5	22.8	25.6	26.6	25.9	27.0	27.3
4H 2H	20.9	22.2	21.3	22.5	22.7	24.5	25.7	24.8	26.0	26.3
3H	21.5	22.6	21.9	22.9	23.2	25.8	26.9	26.2	27.2	27.6
4H	21.8	22.8	22.2	23.1	23.5	26.0	27.0	26.4	27.4	27.7
6H	22.0	22.9	22.5	23.3	23.7	26.2	27.0	26.6	27.4	27.8
8H	22.1	22.9	22.6	23.3	23.8	26.2	27.0	26.7	27.4	27.9
12H	22.2	23.0	22.7	23.4	23.8	26.2	27.0	26.7	27.4	27.8
8H 4H	22.2	23.0	22.6	23.3	23.8	26.0	26.8	26.5	27.2	27.6
6H	22.5	23.2	23.0	23.6	24.1	26.3	27.0	26.8	27.4	27.9
8H	22.7	23.2	23.1	23.7	24.2	26.4	27.0	26.9	27.5	28.0
12H	22.8	23.3	23.3	23.8	24.3	26.5	27.0	27.0	27.5	28.0
12H 4H	22.2	22.9	22.7	23.4	23.8	26.0	26.7	26.4	27.1	27.6
6H	22.6	23.2	23.1	23.6	24.1	26.3	26.9	26.8	27.3	27.8
8H	22.8	23.3	23.3	23.8	24.3	26.5	27.0	27.0	27.5	28.0
Variations with the observer position at spacings(CIE Pub.117):										
S = 1.0H	+ 1.0 / - 1.2					+ 0.2 / - 0.3				
1.5H	+ 0.8 / - 1.4					+ 0.7 / - 0.6				
2.0H	+ 1.9 / - 1.2					+ 1.5 / - 1.6				

CIE Pub.117, 340.5 lm Total Lamp Luminous Flux Correct (8log(F/F0) = -3.7)
 Area: 0.016 m2

C Range: 0 - 360DEG
 C Interval: 15.0DEG
 Test Speed: HIGH
 Temperature:25.3°C
 Operators:DAMIN
 Test Date:2023-10-12

Range: 0 - 180DEG
 Interval: 1.0DEG
 Test System:EVERFINE GO-2000B_V1 SYSTEM V2.00.471
 Humidity:65.0%
 Test Distance:4.880m [K=1.0000]
 Remarks:

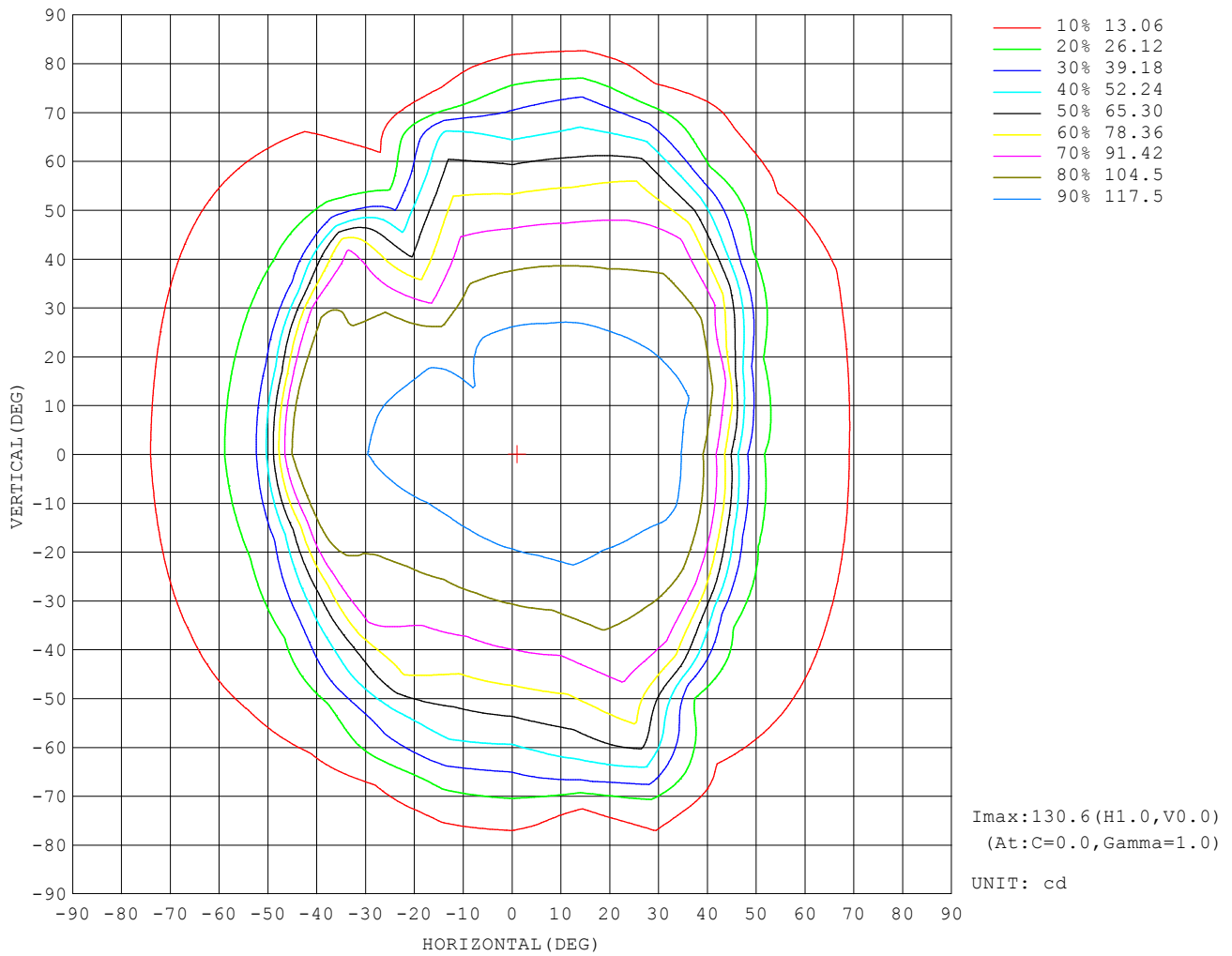
UTILIZATION FACTORS TABLE

REFLECTANCE										
Ceiling	0.8	0.8	0.8	0.7	0.7	0.7	0.5	0.5	0.5	0
Walls	0.7	0.5	0.3	0.7	0.5	0.3	0.7	0.5	0.3	0
Working plane	0.2	0.2	0.2	0.2	0.2	0.2	0.2	0.2	0.2	0
ROOM INDEX	UTILIZATION FACTORS (PERCENT) $k(RI) \times RCR = 5$									
$k = 0.60$	60	49	43	59	49	42	58	48	42	36
0.80	70	60	53	69	59	52	68	58	52	45
1.00	79	69	62	78	68	62	75	69	61	54
1.25	86	76	70	84	75	69	82	74	68	61
1.50	91	82	75	89	81	75	86	79	73	66
2.00	97	89	83	95	88	83	92	86	81	73
2.50	100	93	88	98	92	87	94	89	85	77
3.00	104	97	92	101	96	91	97	93	89	80
4.00	107	102	98	105	100	96	100	96	93	84
5.00	109	105	101	107	103	99	102	99	96	86
ROOM INDEX	UF (total)									Direct
According to DIN EN 13032-2 2004			Suspended				SHRNOM = 1.25			

C Range: 0 - 360DEG
 C Interval: 15.0DEG
 Test Speed: HIGH
 Temperature: 25.3°C
 Operators: DAMIN
 Test Date: 2023-10-12

Range: 0 - 180DEG
 Interval: 1.0DEG
 Test System: EVERFINE GO-2000B_V1 SYSTEM V2.00.471
 Humidity: 65.0%
 Test Distance: 4.880m [K=1.0000]
 Remarks:

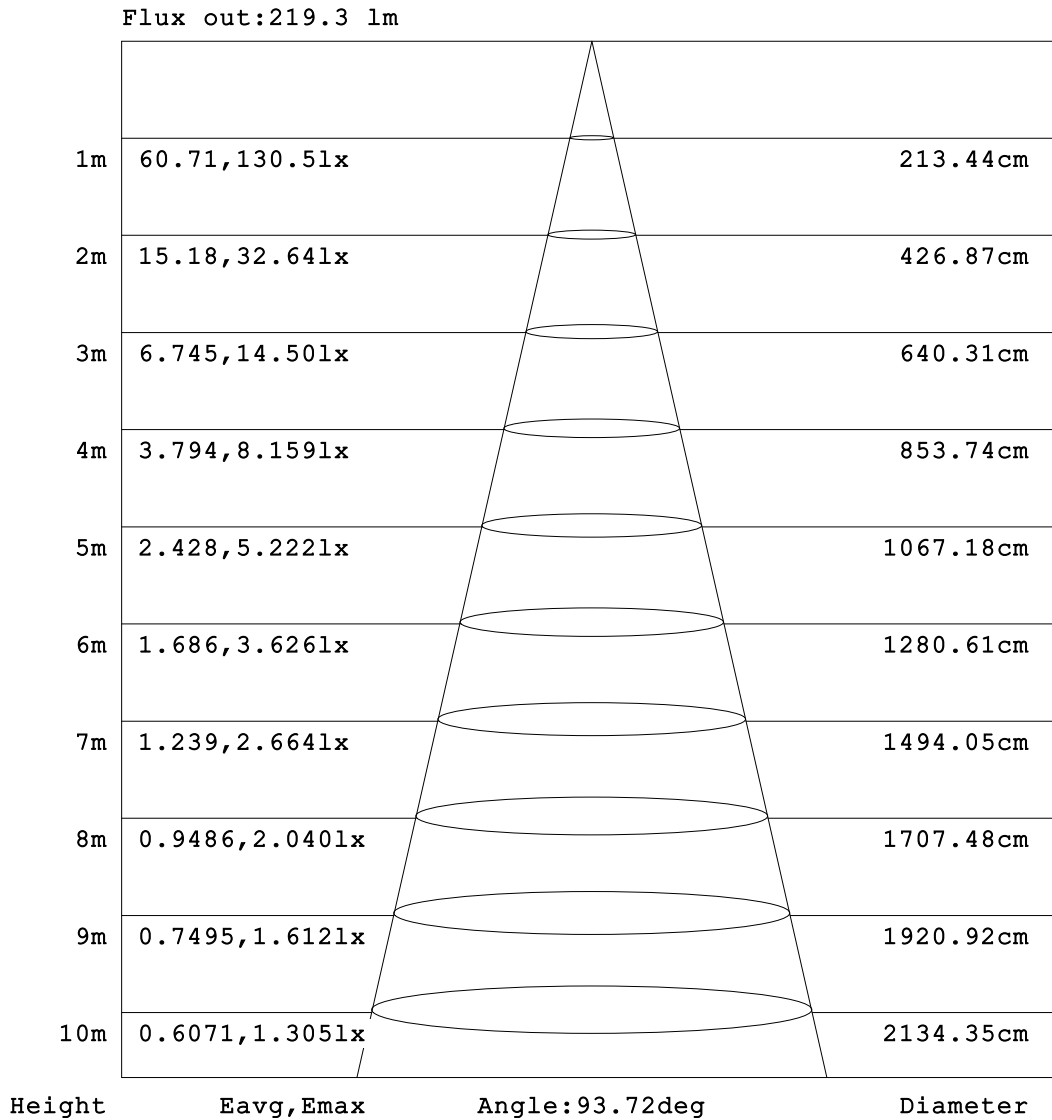
ISOCANDELA DIAGRAM



C Range: 0 - 360DEG
 C Interval: 15.0DEG
 Test Speed: HIGH
 Temperature: 25.3°C
 Operators: DAMIN
 Test Date: 2023-10-12

Range: 0 - 180DEG
 Interval: 1.0DEG
 Test System: EVERFINE GO-2000B_V1 SYSTEM V2.00.471
 Humidity: 65.0%
 Test Distance: 4.880m [K=1.0000]
 Remarks:

AAI Figure

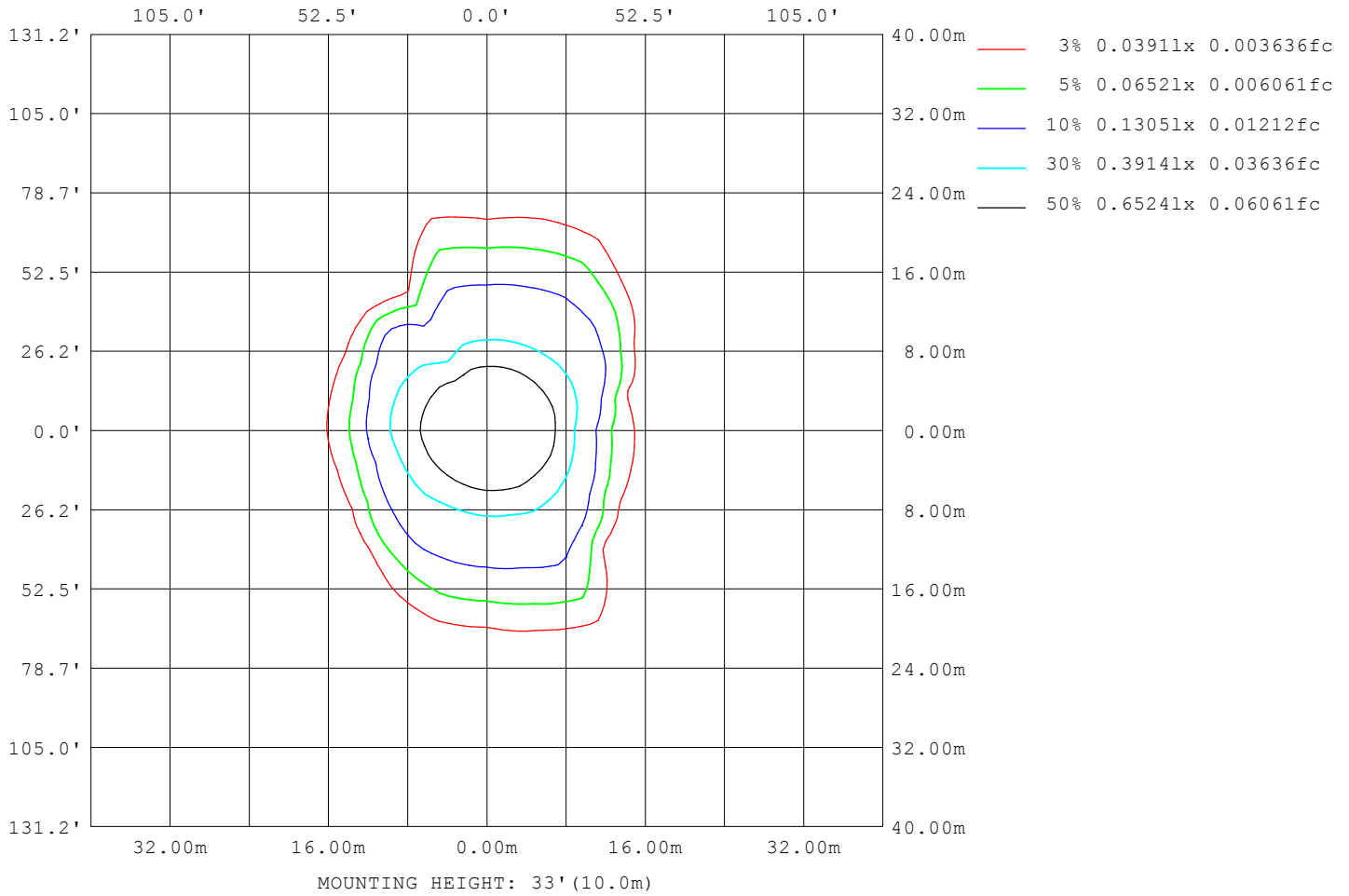


Note:The Curves indicate the illuminated area and the average illumination when the luminaire is at different distance.

C Range: 0 - 360DEG
 C Interval: 15.0DEG
 Test Speed: HIGH
 Temperature:25.3°C
 Operators:DAMIN
 Test Date:2023-10-12

Range: 0 - 180DEG
 Interval: 1.0DEG
 Test System:EVERFINE GO-2000B_V1 SYSTEM V2.00.471
 Humidity:65.0%
 Test Distance:4.880m [K=1.0000]
 Remarks:

ISOLUX DIAGRAM



C Range: 0 - 360DEG
 C Interval: 15.0DEG
 Test Speed: HIGH
 Temperature: 25.3°C
 Operators: DAMIN
 Test Date: 2023-10-12

Range: 0 - 180DEG
 Interval: 1.0DEG
 Test System: EVERFINE GO-2000B_V1 SYSTEM V2.00.471
 Humidity: 65.0%
 Test Distance: 4.880m [K=1.0000]
 Remarks:

LED Avg.L Report

NAME: LED Strip	TYPE: Indoor lighting	WEIGHT: 75g
SPEC.: LED	DIM.: 500*16*16MM	SERIAL No.: 20231004090
MFR.: Hide-a-lite	SUR.: 500*16MM	Shielding Angle:

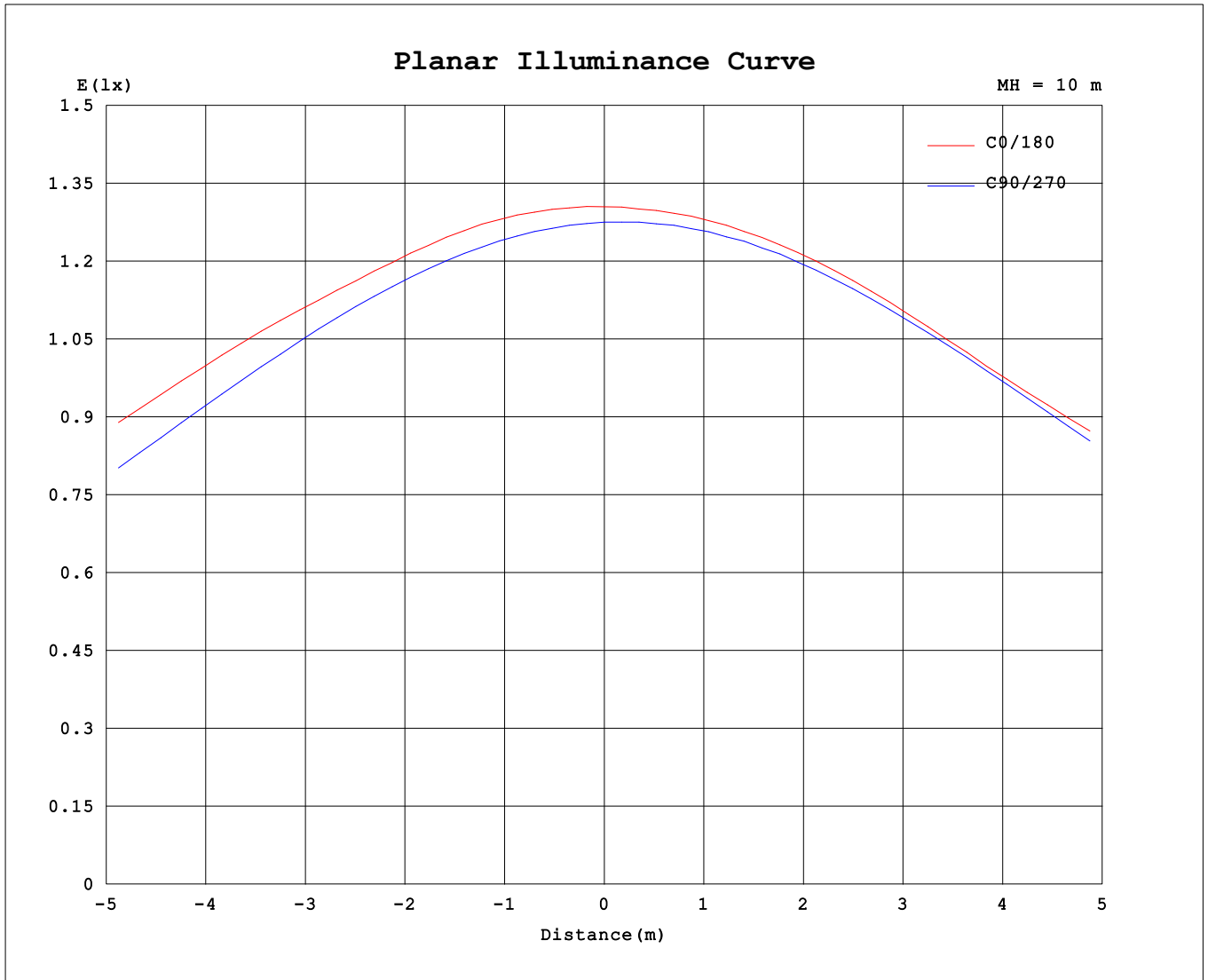
AvgL	cd/m2
L_0~180 (65) av	2587
L_0~180 (75) av	2491
L_0~180 (85) av	2772
L_90~270 (65) av	6655
L_90~270 (75) av	5288
L_90~270 (85) av	4085
L_45 (65) av	3354
L_45 (75) av	2513
L_45 (85) av	1899

Standard: GB/T 29293-2012

C Range: 0 - 360DEG
 C Interval: 15.0DEG
 Test Speed: HIGH
 Temperature:25.3°C
 Operators:DAMIN
 Test Date:2023-10-12

Range: 0 - 180DEG
 Interval: 1.0DEG
 Test System:EVERFINE GO-2000B_V1 SYSTEM V2.00.471
 Humidity:65.0%
 Test Distance:4.880m [K=1.0000]
 Remarks:

Planar Illuminance Curve



C Range: 0 - 360DEG
 C Interval: 15.0DEG
 Test Speed: HIGH
 Temperature: 25.3°C
 Operators: DAMIN
 Test Date: 2023-10-12

Range: 0 - 180DEG
 Interval: 1.0DEG
 Test System: EVERFINE GO-2000B_V1 SYSTEM V2.00.471
 Humidity: 65.0%
 Test Distance: 4.880m [K=1.0000]
 Remarks:

LUMINOUS DISTRIBUTION INTENSITY DATA

Table--1

UNIT: cd

C (DEG) \ □ (DEG)	0	15	30	45	60	75	90	105	120	135	150	165	180	195	210	225	240	255	270
0	130	130	129	129	124	128	128	127	128	128	129	130	130	130	129	129	124	128	128
5	130	130	129	129	124	127	126	126	126	127	127	129	130	130	129	128	123	128	128
10	129	129	128	127	124	125	124	124	124	124	125	127	129	128	127	127	120	127	127
15	127	127	125	125	123	122	121	120	120	120	121	124	127	126	125	125	118	125	125
20	126	125	123	122	121	119	117	116	115	116	117	120	123	123	122	121	115	121	122
25	123	123	121	119	118	114	112	110	109	111	114	117	121	120	118	117	112	117	118
30	121	120	118	115	114	108	105	103	103	106	109	113	117	116	115	112	103	112	114
35	117	118	115	110	109	102	98.7	96.4	96.8	100	105	109	113	112	110	108	90.4	106	108
40	101	105	108	105	105	94.8	91.3	88.7	90.0	96.7	102	110	115	112	106	103	77.3	98.8	101
45	64.0	75.1	90.4	99.1	99.2	87.0	82.8	80.1	83.9	88.4	78.8	80.4	105	106	107	98.4	63.7	92.1	93.5
50	31.0	36.3	52.7	84.2	92.6	78.6	73.0	70.7	76.8	62.7	51.9	43.6	54.6	58.8	83.6	95.5	50.5	85.0	84.6
55	23.4	24.1	26.3	51.1	85.7	69.7	62.4	60.6	56.2	46.2	31.1	28.3	30.8	30.8	37.8	67.2	35.6	76.3	74.9
60	19.1	19.9	21.7	24.0	76.4	59.8	50.9	50.5	41.3	26.6	21.7	22.1	24.6	24.8	25.8	28.4	20.0	67.5	63.6
65	15.6	15.9	16.9	18.8	60.6	46.4	39.4	37.8	28.9	16.9	16.7	17.6	19.4	19.3	19.6	21.1	13.1	57.9	50.6
70	12.1	12.5	13.1	13.6	41.0	26.0	28.0	24.5	13.7	12.0	12.2	13.8	16.1	15.7	15.5	15.4	8.79	31.7	40.1
75	8.35	8.35	8.64	9.42	19.3	10.1	16.2	13.8	8.38	7.77	8.17	9.79	12.3	11.8	11.3	10.9	5.13	13.9	27.6
80	5.16	5.40	5.34	5.69	12.0	6.64	9.62	6.94	4.74	4.44	4.84	6.07	8.24	7.79	7.27	6.68	2.41	8.38	16.7
85	2.68	2.93	2.92	3.02	7.87	3.06	3.03	2.65	2.25	2.25	2.55	3.56	5.05	4.54	3.97	3.28	0.94	4.23	8.36
90	1.36	1.45	1.45	1.41	4.38	1.16	1.06	1.06	1.06	1.15	1.36	1.86	2.22	2.30	1.86	1.24	0.52	1.35	2.57
95	1.07	1.07	1.07	1.00	2.28	0.81	0.45	0.75	0.75	0.75	0.89	1.12	1.01	1.02	0.94	0.63	0.51	0.42	0.59
100	1.07	1.09	1.06	1.01	1.35	0.85	0.49	0.81	0.72	0.69	0.72	0.87	0.62	0.62	0.60	0.51	0.55	0.40	0.47
105	1.12	1.13	1.10	1.05	1.10	0.84	0.57	0.81	0.80	0.71	0.69	0.83	0.54	0.54	0.53	0.52	0.61	0.46	0.50
110	1.17	1.18	1.15	1.11	1.06	0.85	0.66	0.81	0.84	0.78	0.70	0.84	0.57	0.56	0.58	0.59	0.68	0.54	0.57
115	1.23	1.24	1.21	1.17	1.07	0.88	0.74	0.85	0.90	0.87	0.75	0.88	0.63	0.63	0.66	0.67	0.76	0.62	0.65
120	1.30	1.31	1.28	1.23	1.09	0.93	0.80	0.89	0.95	0.94	0.83	0.93	0.72	0.72	0.75	0.76	0.84	0.72	0.73
125	1.36	1.36	1.32	1.26	1.11	0.98	0.87	0.94	1.00	1.01	0.92	0.96	0.81	0.81	0.84	0.85	0.92	0.81	0.81
130	1.41	1.41	1.35	1.27	1.10	1.03	0.95	1.00	1.04	1.07	1.01	0.92	0.90	0.90	0.92	0.92	0.99	0.89	0.89
135	1.44	1.43	1.36	1.28	1.09	1.08	1.03	1.07	1.09	1.11	1.10	0.98	0.98	0.98	0.99	0.99	1.05	0.96	0.97
140	1.45	1.43	1.38	1.28	1.09	1.14	1.11	1.14	1.14	1.15	1.16	1.05	1.05	1.05	1.06	1.07	1.12	1.04	1.05
145	1.45	1.45	1.37	1.30	1.10	1.21	1.19	1.21	1.19	1.20	1.18	1.28	1.10	1.11	1.13	1.13	1.19	1.11	1.13
150	1.46	1.46	1.37	1.34	1.14	1.27	1.26	1.28	1.26	1.26	1.24	1.30	1.15	1.15	1.18	1.18	1.27	1.19	1.22
155	1.50	1.46	1.40	1.38	1.18	1.32	1.33	1.35	1.33	1.33	1.31	1.34	1.22	1.21	1.23	1.24	1.35	1.26	1.30
160	1.54	1.47	1.43	1.43	1.23	1.39	1.39	1.41	1.40	1.40	1.39	1.43	1.31	1.28	1.30	1.31	1.43	1.34	1.37
165	1.51	1.50	1.48	1.47	1.29	1.45	1.46	1.47	1.47	1.47	1.46	1.52	1.40	1.38	1.39	1.39	1.50	1.41	1.43
170	1.52	1.53	1.52	1.51	1.39	1.51	1.51	1.52	1.51	1.53	1.54	1.59	1.48	1.46	1.47	1.46	1.55	1.48	1.49
175	1.56	1.56	1.54	1.54	1.49	1.55	1.55	1.56	1.55	1.57	1.60	1.69	1.55	1.52	1.53	1.52	1.57	1.52	1.54
180	1.58	1.57	1.56	1.56	1.56	1.56	1.56	1.56	1.57	1.58	1.63	1.80	1.57	1.56	1.56	1.55	1.58	1.56	1.56

C Range: 0 - 360DEG
 C Interval: 15.0DEG
 Test Speed: HIGH
 Temperature:25.3℃
 Operators:DAMIN
 Test Date:2023-10-12

□ Range: 0 - 180DEG
 □ Interval: 1.0DEG
 Test System:EVERFINE GO-2000B_V1 SYSTEM V2.00.471
 Humidity:65.0%
 Test Distance:4.880m [K=1.0000]
 Remarks:

LUMINOUS DISTRIBUTION INTENSITY DATA

Table--2

UNIT: cd

C (DEG) \ □ (DEG)	285	300	315	330	345														
0	127	128	128	129	130														
5	128	128	129	129	130														
10	128	128	129	129	130														
15	126	127	128	128	128														
20	123	125	126	126	126														
25	120	122	123	124	125														
30	115	118	119	121	122														
35	110	113	116	118	120														
40	104	107	111	114	114														
45	96.7	101	106	108	95.7														
50	88.6	94.4	100	91.0	48.3														
55	79.5	86.7	86.9	58.5	22.9														
60	69.2	77.5	61.1	28.9	15.9														
65	57.3	61.1	33.9	20.0	15.0														
70	47.6	40.6	18.1	12.9	13.9														
75	35.3	19.8	13.5	6.93	10.7														
80	19.9	10.1	7.92	7.80	6.91														
85	8.13	6.03	2.05	5.16	4.44														
90	2.42	1.00	3.01	2.70	2.25														
95	0.48	1.13	1.20	1.38	1.29														
100	0.54	0.78	0.89	0.59	1.12														
105	0.56	0.75	0.91	0.81	1.04														
110	0.63	0.81	0.95	1.10	0.82														
115	0.71	0.87	1.01	1.16	1.10														
120	0.78	0.92	1.07	1.21	1.32														
125	0.86	0.99	1.12	1.26	1.43														
130	0.93	1.04	1.16	1.31	1.49														
135	1.00	1.08	1.19	1.34	1.52														
140	1.07	1.14	1.21	1.36	1.54														
145	1.15	1.19	1.25	1.37	1.56														
150	1.22	1.26	1.30	1.40	1.62														
155	1.30	1.33	1.36	1.43	1.60														
160	1.37	1.39	1.41	1.48	1.66														
165	1.43	1.45	1.46	1.53	1.72														
170	1.49	1.51	1.52	1.58	1.75														
175	1.53	1.55	1.56	1.61	1.80														
180	1.56	1.57	1.59	1.63	1.82														

C Range: 0 - 360DEG
 C Interval: 15.0DEG
 Test Speed: HIGH
 Temperature:25.3°C
 Operators:DAMIN
 Test Date:2023-10-12

□ Range: 0 - 180DEG
 □ Interval: 1.0DEG
 Test System:EVERFINE GO-2000B_V1 SYSTEM V2.00.471
 Humidity:65.0%
 Test Distance:4.880m [K=1.0000]
 Remarks: