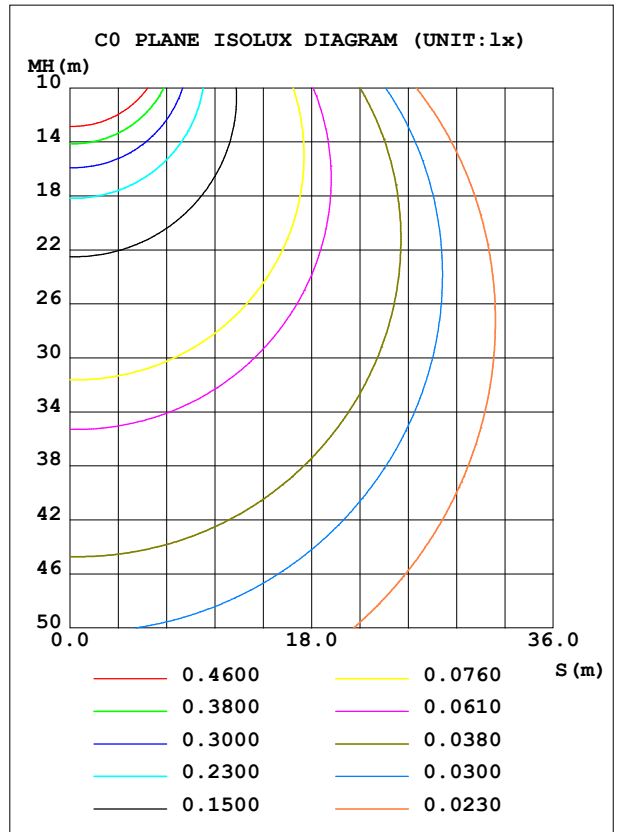
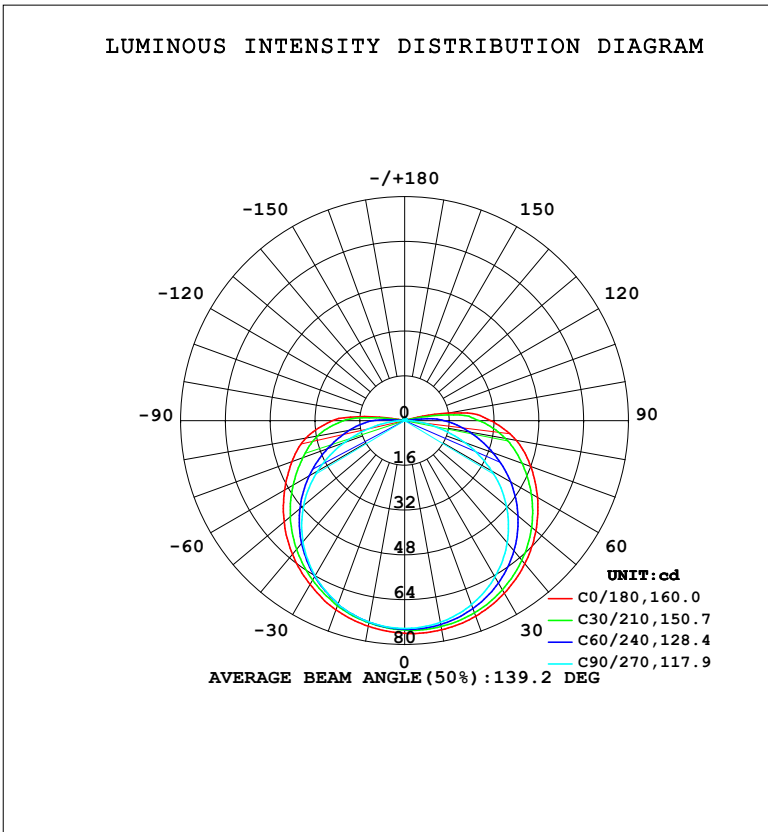


**LUMINAIRE PHOTOMETRIC TEST REPORT**

NAME: LED Strip	TYPE: Indoor lighting	WEIGHT: 75g
SPEC.: COB LED	DIM.: 500*5*1.9MM	SERIAL No.: 20240429001
MFR.: EVERFINE	SUR.: 500*5MM	Shielding Angle:

DATA OF LAMP		PHOTOMETRIC DATA			
NOBEL8B-24 (WCP) (05) -UR-DL-EP		Imax (cd)	76.24	S/MH (C0/180)	1.33
NOMINAL POWER (W)	3.44989	LOR (%)	100.0	S/MH (C90/270)	1.28
RATED VOLTAGE (V)	DC 24V	TOTAL FLUX (lm)	302.34	$\eta$ UP, DN (C0-180)	2.9, 47.6
NOMINAL FLUX (lm)	302.336	CIE CLASS	DIRECT	$\eta$ UP, DN (C180-360)	2.7, 46.8
LAMPS INSIDE	1	$\eta$ up (%)	5.5	CIBSE SHR NOM	1.50
TEST VOLTAGE (V)	DC 24V	$\eta$ down (%)	94.5	CIBSE SHR MAX	1.55



C Range: 0 - 360DEG  
 C Interval: 15.0DEG  
 Test Speed: HIGH  
 Temperature: 25.3°C  
 Operators: DAMIN  
 Test Date: 2024-04-30

$\gamma$  Range: 0 - 180DEG  
 $\gamma$  Interval: 1.0DEG  
 Test System: EVERFINE GO-2000B\_V1 SYSTEM V2.00.471  
 Humidity: 65.0%  
 Test Distance: 4.880m [K=1.0000]  
 Remarks:

**ZONAL FLUX DIAGRAM**

ZONAL FLUX DIAGRAM:

$\gamma$	C0	C45	C90	C135	C180	C225	C270	C315	$\gamma$	$\Phi$ zone	$\Phi$ total	%lum,lamp
10	75.89	74.35	73.18	73.42	74.62	73.08	73.09	74.36	0- 10	7.109	7.109	2.35,2.35
20	74.33	72.32	69.92	70.47	71.92	69.87	69.67	72.21	10- 20	20.61	27.72	9.17,9.17
30	71.22	68.33	64.53	65.58	67.61	65.01	64.05	68.34	20- 30	31.99	59.71	19.7,19.7
40	66.82	62.93	57.03	59.44	62.38	58.67	56.57	62.77	30- 40	40.12	99.83	33,33
50	61.23	56.23	47.49	52.13	56.24	51.20	47.11	55.90	40- 50	44.29	144.1	47.7,47.7
60	54.83	48.41	35.89	43.89	49.50	42.95	35.79	47.95	50- 60	44.18	188.3	62.3,62.3
70	47.92	39.92	22.84	35.50	42.83	34.36	22.85	39.48	60- 70	40.09	228.4	75.5,75.5
80	40.49	31.30	9.793	27.79	35.84	26.66	9.808	30.83	70- 80	33.13	261.5	86.5,86.5
90	30.80	21.52	0.7920	18.26	25.93	17.21	0.8849	21.36	80- 90	24.08	285.6	94.5,94.5
100	15.82	5.131	0.3516	1.539	4.745	1.027	0.3690	6.304	90-100	12.15	297.7	98.5,98.5
110	0.8553	0.5377	0.4003	0.5133	0.6748	0.5200	0.4378	0.5659	100-110	1.828	299.6	99.1,99.1
120	0.5848	0.5390	0.4911	0.5704	0.6577	0.5773	0.5332	0.5552	110-120	0.5356	300.1	99.3,99.3
130	0.6389	0.6228	0.5842	0.6484	0.7101	0.6576	0.6182	0.6343	120-130	0.5383	300.6	99.4,99.4
140	0.6971	0.6973	0.6646	0.7148	0.7602	0.7193	0.6997	0.7019	130-140	0.5210	301.2	99.6,99.6
150	0.7554	0.7637	0.7449	0.7800	0.8090	0.7857	0.7753	0.7705	140-150	0.4644	301.6	99.8,99.8
160	0.8240	0.8288	0.8171	0.8428	0.8614	0.8427	0.8428	0.8276	150-160	0.3717	302.0	99.9,99.9
170	0.8834	0.8882	0.8834	0.8975	0.9103	0.8893	0.8999	0.8846	160-170	0.2440	302.2	100,100
180	0.9242	0.9266	0.9231	0.9242	0.9242	0.9254	0.9219	0.9242	170-180	0.0863	302.3	100,100
DEG	LUMINOUS INTENSITY:cd									UNIT:lm		

Conical surface Flux(90deg): 121.72 lm

%lum = 40.3%

%lamp = 40.3%

Conical surface Flux(120deg): 188.29 lm

%lum = 62.3%

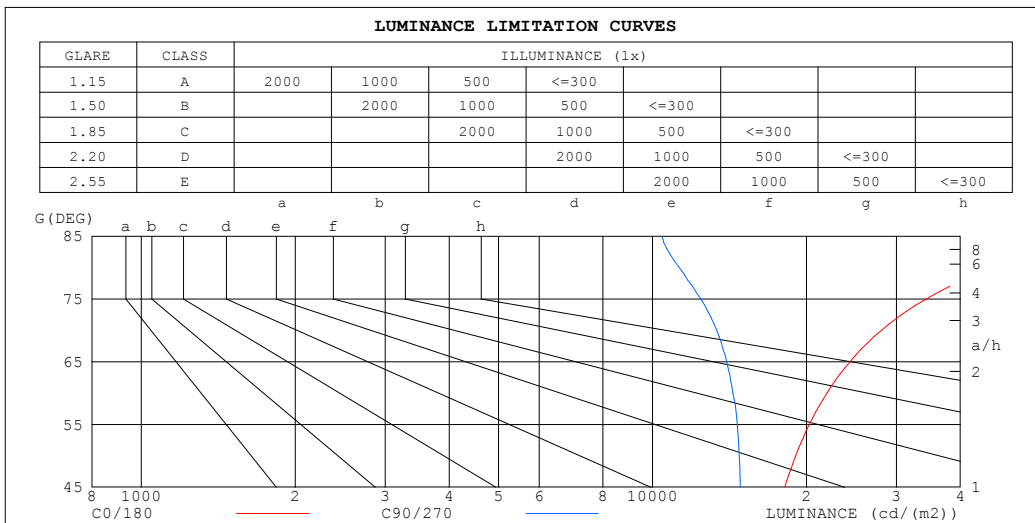
%lamp = 62.3%

C Range: 0 - 360DEG  
 C Interval: 15.0DEG  
 Test Speed: HIGH  
 Temperature:25.3°C  
 Operators:DAMIN  
 Test Date:2024-04-30

$\gamma$  Range: 0 - 180DEG  
 $\gamma$  Interval: 1.0DEG  
 Test System:EVERFINE GO-2000B\_V1 SYSTEM V2.00.471  
 Humidity:65.0%  
 Test Distance:4.880m [K=1.0000]  
 Remarks:

**LUMINANCE LIMITATION CURVES**

<b>NAME:</b> LED Strip	<b>TYPE:</b> Indoor lighting	<b>WEIGHT:</b> 75g
<b>SPEC.:</b> COB LED	<b>DIM.:</b> 500*5*1.9MM	<b>SERIAL No.:</b> 20240429001
<b>MFR.:</b> EVERFINE	<b>SUR.:</b> 500*5MM	<b>Shielding Angle:</b>



LUMINANCE cd/(m2)		
G (DEG)	C0/180	C90/270
85	82001	10446
80	46637	11279
75	34303	12431
70	28023	13355
65	24326	13963
60	21932	14356
55	20265	14649
50	19051	14777
45	18147	14846

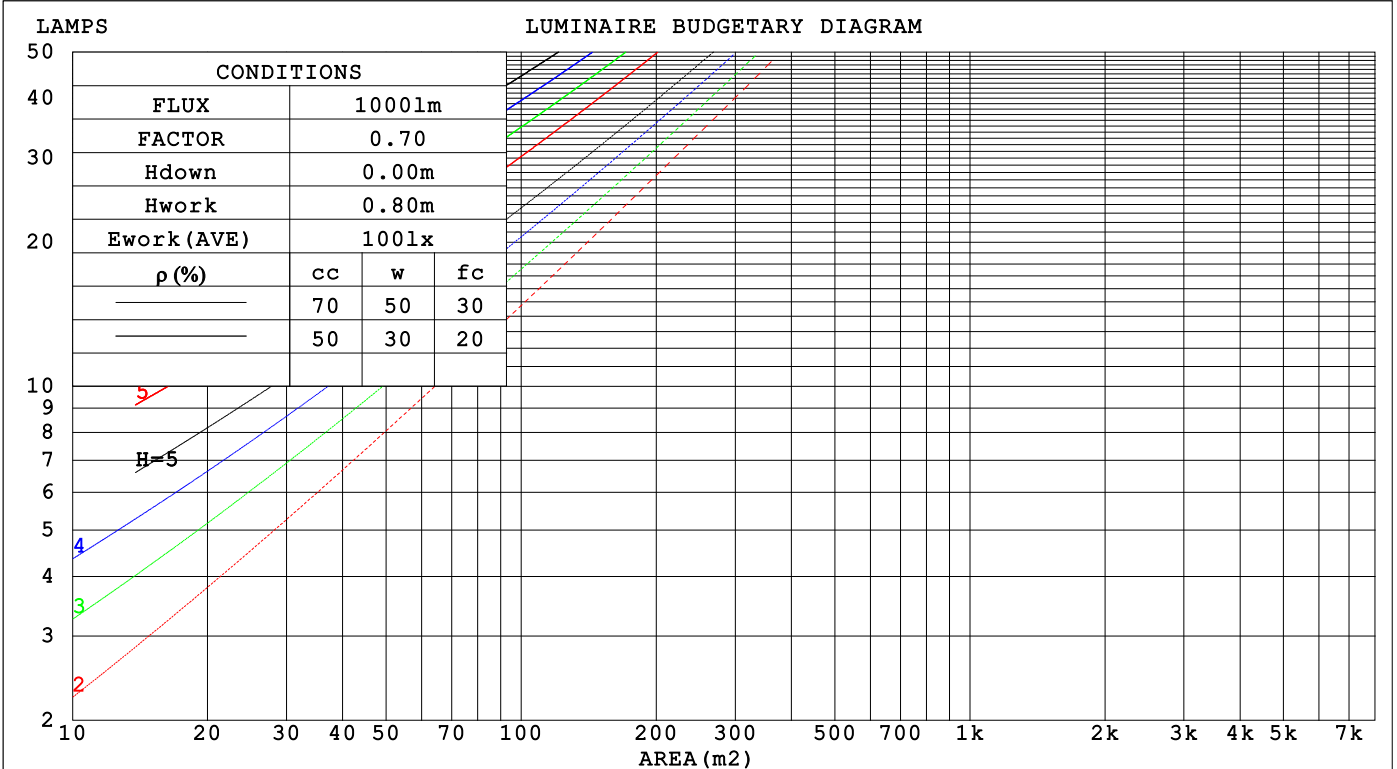
C Range: 0 - 360DEG  
 C Interval: 15.0DEG  
 Test Speed: HIGH  
 Temperature: 25.3°C  
 Operators: DAMIN  
 Test Date: 2024-04-30

γ Range: 0 - 180DEG  
 γ Interval: 1.0DEG  
 Test System: EVERFINE GO-2000B\_V1 SYSTEM V2.00.471  
 Humidity: 65.0%  
 Test Distance: 4.880m [K=1.0000]  
 Remarks:

**CU AND LUMINAIRE BUDGETARY ESTIMATE DIAGRAM**

NAME: LED Strip	TYPE: Indoor lighting	WEIGHT: 75g
SPEC.: COB LED	DIM.: 500*5*1.9MM	SERIAL No.: 20240429001
MFR.: EVERFINE	SUR.: 500*5MM	Shielding Angle:

pcc	80%			70%			50%			30%			10%			0
pw	50%	30%	10%	50%	30%	10%	50%	30%	10%	50%	30%	10%	50%	30%	10%	0
pfc	20%			20%			20%			20%			20%			0
RCR	RCR:Room Cavity Ratio						Coefficients of Utilization(CU)									
0.0	1.18	1.18	1.18	1.14	1.14	1.14	1.08	1.08	1.08	1.02	1.02	1.02	.97	.97	.97	.94
1.0	.98	.92	.87	.95	.90	.85	.90	.85	.82	.85	.81	.78	.80	.77	.75	.72
2.0	.83	.75	.69	.81	.74	.67	.76	.70	.65	.72	.67	.62	.68	.64	.60	.57
3.0	.72	.63	.56	.70	.62	.55	.66	.59	.53	.63	.56	.51	.59	.54	.50	.47
4.0	.63	.54	.46	.62	.53	.46	.58	.50	.44	.55	.48	.43	.52	.47	.42	.39
5.0	.56	.46	.39	.55	.46	.39	.52	.44	.38	.49	.42	.37	.47	.41	.36	.33
6.0	.50	.41	.34	.49	.40	.33	.47	.39	.33	.44	.37	.32	.42	.36	.31	.29
7.0	.45	.36	.30	.44	.36	.29	.42	.34	.29	.40	.33	.28	.38	.32	.27	.25
8.0	.41	.32	.26	.40	.32	.26	.39	.31	.25	.37	.30	.25	.35	.29	.24	.22
9.0	.38	.29	.23	.37	.29	.23	.35	.28	.23	.34	.27	.22	.32	.26	.22	.20
10.0	.35	.27	.21	.34	.26	.21	.33	.25	.21	.31	.25	.20	.30	.24	.20	.18



C Range: 0 - 360DEG  
 C Interval: 15.0DEG  
 Test Speed: HIGH  
 Temperature:25.3°C  
 Operators:DAMIN  
 Test Date:2024-04-30

γ Range: 0 - 180DEG  
 γ Interval: 1.0DEG  
 Test System:EVERFINE GO-2000B\_V1 SYSTEM V2.00.471  
 Humidity:65.0%  
 Test Distance:4.880m [K=1.0000]  
 Remarks:

WEC AND CCEC

NAME: LED Strip	TYPE: Indoor lighting	WEIGHT: 75g
SPEC.: COB LED	DIM.: 500*5*1.9MM	SERIAL No.: 20240429001
MFR.: EVERFINE	SUR.: 500*5MM	Shielding Angle:

$\rho_{cc}$	80%			70%			50%			30%			10%			0
$\rho_w$	50%	30%	10%	50%	30%	10%	50%	30%	10%	50%	30%	10%	50%	30%	10%	0
$\rho_{fc}$	20%			20%			20%			20%			20%			0
RCR	RCR:Room Cavity Ratio						Wall Exitance Coefficients (WEC)									
0.0																
1.0	.399	.227	.072	.390	.222	.071	.373	.214	.068	.358	.206	.066	.343	.199	.064	
2.0	.346	.189	.058	.338	.186	.057	.322	.179	.056	.309	.173	.054	.296	.167	.053	
3.0	.307	.163	.049	.300	.160	.048	.286	.155	.047	.274	.150	.046	.262	.145	.045	
4.0	.276	.143	.042	.269	.141	.042	.257	.136	.041	.246	.132	.040	.235	.128	.039	
5.0	.250	.127	.037	.244	.125	.037	.234	.122	.036	.224	.118	.035	.214	.114	.034	
6.0	.229	.115	.033	.224	.113	.033	.214	.110	.032	.205	.106	.031	.196	.103	.031	
7.0	.211	.104	.030	.206	.103	.029	.197	.100	.029	.189	.097	.028	.181	.094	.028	
8.0	.195	.095	.027	.191	.094	.027	.183	.092	.026	.176	.089	.026	.169	.087	.025	
9.0	.182	.088	.025	.178	.087	.024	.171	.084	.024	.164	.082	.024	.158	.080	.023	
10.0	.170	.082	.023	.167	.081	.022	.160	.078	.022	.154	.076	.022	.148	.074	.021	

$\rho_{cc}$	80%			70%			50%			30%			10%			0
$\rho_w$	50%	30%	10%	50%	30%	10%	50%	30%	10%	50%	30%	10%	50%	30%	10%	0
$\rho_{fc}$	20%			20%			20%			20%			20%			0
RCR	RCR:Room Cavity Ratio						Ceiling Cavity Exitance Coefficients (CCEC)									
0.0	.233	.233	.233	.199	.199	.199	.136	.136	.136	.078	.078	.078	.025	.025	.025	
1.0	.229	.198	.170	.196	.170	.146	.134	.117	.101	.077	.068	.059	.025	.022	.019	
2.0	.222	.174	.134	.190	.150	.116	.130	.104	.081	.075	.060	.047	.024	.020	.015	
3.0	.215	.158	.112	.184	.136	.097	.126	.094	.068	.073	.055	.040	.023	.018	.013	
4.0	.207	.145	.098	.177	.125	.085	.122	.087	.060	.071	.051	.035	.023	.017	.012	
5.0	.199	.135	.088	.171	.117	.076	.118	.081	.054	.068	.048	.032	.022	.016	.011	
6.0	.191	.127	.080	.164	.110	.070	.113	.077	.050	.066	.045	.029	.021	.015	.010	
7.0	.184	.120	.075	.158	.104	.066	.109	.073	.046	.063	.043	.028	.020	.014	.009	
8.0	.177	.114	.071	.152	.099	.062	.105	.070	.044	.061	.041	.026	.020	.013	.009	
9.0	.170	.109	.068	.147	.095	.059	.102	.067	.042	.059	.039	.025	.019	.013	.008	
10.0	.164	.105	.066	.141	.091	.057	.098	.064	.041	.057	.038	.024	.019	.012	.008	

C Range: 0 - 360DEG  
 C Interval: 15.0DEG  
 Test Speed: HIGH  
 Temperature: 25.3°C  
 Operators: DAMIN  
 Test Date: 2024-04-30

$\gamma$  Range: 0 - 180DEG  
 $\gamma$  Interval: 1.0DEG  
 Test System: EVERFINE GO-2000B\_V1 SYSTEM V2.00.471  
 Humidity: 65.0%  
 Test Distance: 4.880m [K=1.0000]  
 Remarks:

**UGR(Unified Glare Rating) Table**

NAME: LED Strip	TYPE: Indoor lighting	WEIGHT: 75g
SPEC.: COB LED	DIM.: 500*5*1.9MM	SERIAL No.: 20240429001
MFR.: EVERFINE	SUR.: 500*5MM	Shielding Angle:

ceiling/cavity	0.7	0.7	0.5	0.5	0.3	0.7	0.7	0.5	0.5	0.3
walls	0.5	0.3	0.5	0.3	0.3	0.5	0.3	0.5	0.3	0.3
working plane	0.2	0.2	0.2	0.2	0.2	0.2	0.2	0.2	0.2	0.2

Room dimensions	Viewed crosswise					Viewed endwise				
x = 2H y = 2H	27.7	29.2	28.0	29.5	29.9	25.9	27.5	26.3	27.8	28.2
3H	30.3	31.8	30.7	32.1	32.5	27.6	29.0	28.0	29.4	29.8
4H	31.8	33.2	32.2	33.6	34.0	28.2	29.6	28.6	30.0	30.4
6H	33.4	34.7	33.8	35.1	35.5	28.7	30.1	29.2	30.4	30.9
8H	34.3	35.6	34.7	36.0	36.4	28.9	30.2	29.3	30.6	31.0
12H	35.3	36.5	35.7	36.9	37.3	29.0	30.3	29.5	30.7	31.1
4H 2H	28.3	29.7	28.7	30.1	30.5	27.1	28.5	27.5	28.9	29.3
3H	31.3	32.5	31.7	32.9	33.3	29.0	30.3	29.5	30.7	31.1
4H	32.9	34.1	33.4	34.5	35.0	29.9	31.0	30.4	31.5	31.9
6H	34.8	35.8	35.2	36.2	36.7	30.6	31.6	31.1	32.1	32.6
8H	35.8	36.7	36.3	37.2	37.7	30.8	31.8	31.3	32.3	32.8
12H	36.9	37.8	37.4	38.2	38.8	31.0	31.9	31.5	32.4	32.9
8H 4H	33.3	34.3	33.8	34.8	35.3	30.9	31.9	31.5	32.4	32.9
6H	35.5	36.3	36.0	36.8	37.4	32.0	32.9	32.6	33.4	33.9
8H	36.7	37.4	37.2	38.0	38.5	32.5	33.2	33.0	33.8	34.3
12H	38.1	38.7	38.6	39.3	39.9	32.9	33.5	33.4	34.1	34.7
12H 4H	33.4	34.3	33.9	34.8	35.3	31.3	32.2	31.8	32.7	33.2
6H	35.6	36.4	36.2	36.9	37.5	32.6	33.3	33.1	33.9	34.4
8H	36.9	37.6	37.5	38.1	38.7	33.2	33.9	33.8	34.4	35.0

Variations with the observer position at spacings(CIE Pub.117):		
S = 1.0H	+ 0.1 / - 0.1	+ 0.1 / - 0.1
1.5H	+ 0.2 / - 0.3	+ 0.2 / - 0.3
2.0H	+ 0.2 / - 0.4	+ 0.2 / - 0.4

CIE Pub.117, 302.3 lm Total Lamp Luminous Flux Correct (8log(F/F0) = -4.2)  
 Area: 0.005 m2

C Range: 0 - 360DEG  
 C Interval: 15.0DEG  
 Test Speed: HIGH  
 Temperature:25.3°C  
 Operators:DAMIN  
 Test Date:2024-04-30

γ Range: 0 - 180DEG  
 γ Interval: 1.0DEG  
 Test System:EVERFINE GO-2000B\_V1 SYSTEM V2.00.471  
 Humidity:65.0%  
 Test Distance:4.880m [K=1.0000]  
 Remarks:

**UTILIZATION FACTORS TABLE**

NAME: LED Strip	TYPE: Indoor lighting	WEIGHT: 75g
SPEC.: COB LED	DIM.: 500*5*1.9MM	SERIAL No.: 20240429001
MFR.: EVERFINE	SUR.: 500*5MM	Shielding Angle:

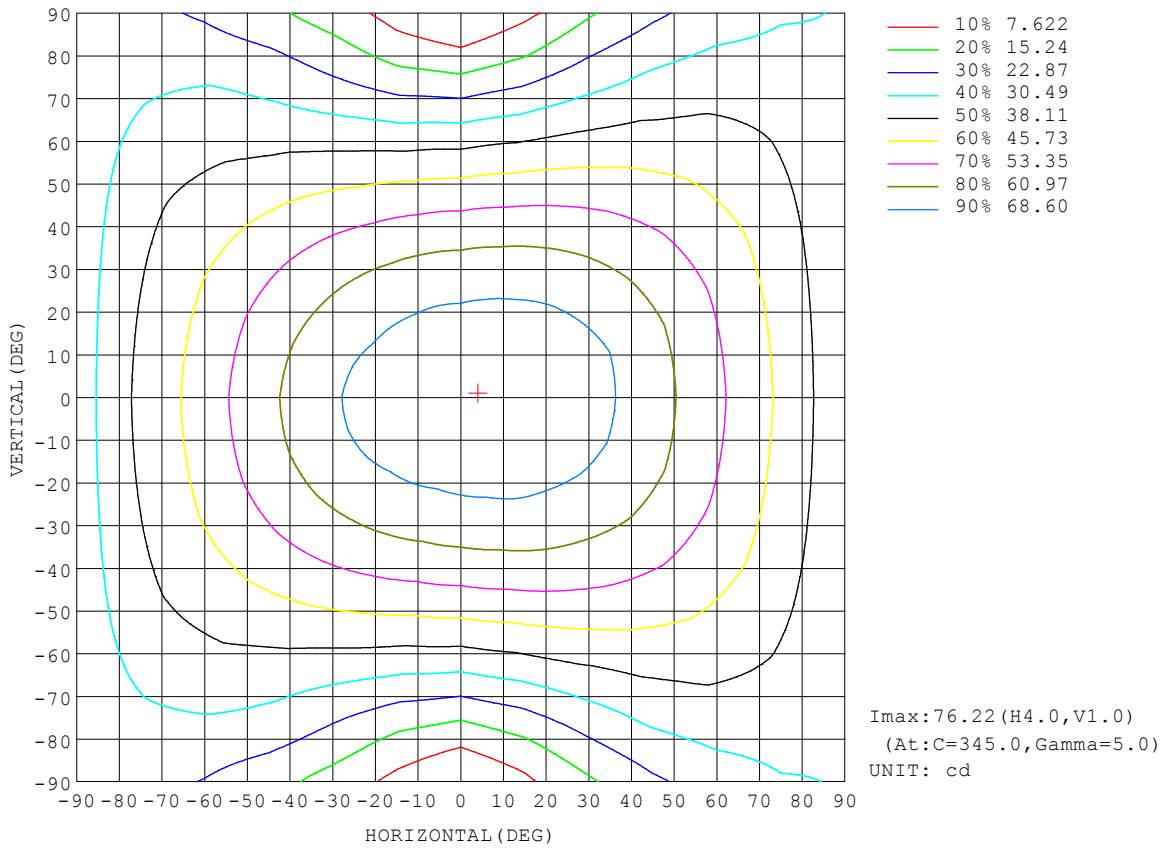
REFLECTANCE										
Ceiling	0.8	0.8	0.8	0.7	0.7	0.7	0.5	0.5	0.5	0
Walls	0.7	0.5	0.3	0.7	0.5	0.3	0.7	0.5	0.3	0
Working plane	0.2	0.2	0.2	0.2	0.2	0.2	0.2	0.2	0.2	0
ROOM INDEX	UTILIZATION FACTORS (PERCENT) $k(RI) \times RCR = 5$									
$k = 0.60$	51	38	31	50	38	31	49	38	31	24
0.80	60	47	39	59	47	39	57	46	38	31
1.00	68	55	47	67	55	47	64	56	46	38
1.25	75	63	54	73	62	54	70	60	53	44
1.50	80	68	60	78	67	59	75	65	58	49
2.00	87	77	69	85	75	68	81	73	66	56
2.50	92	82	74	89	80	73	85	77	71	61
3.00	96	86	79	93	85	78	88	81	75	65
4.00	100	92	86	97	90	84	92	86	81	70
5.00	103	96	91	100	94	89	95	90	85	74
ROOM INDEX	UF(total)									Direct
According to DIN EN 13032-2 2004			Suspended				SHRNOM = 1.25			

C Range: 0 - 360DEG  
 C Interval: 15.0DEG  
 Test Speed: HIGH  
 Temperature: 25.3°C  
 Operators: DAMIN  
 Test Date: 2024-04-30

$\gamma$  Range: 0 - 180DEG  
 $\gamma$  Interval: 1.0DEG  
 Test System: EVERFINE GO-2000B\_V1 SYSTEM V2.00.471  
 Humidity: 65.0%  
 Test Distance: 4.880m [K=1.0000]  
 Remarks:

**ISOCANDELA DIAGRAM**

NAME: LED Strip	TYPE: Indoor lighting	WEIGHT: 75g
SPEC.: COB LED	DIM.: 500*5*1.9MM	SERIAL No.: 20240429001
MFR.: EVERFINE	SUR.: 500*5MM	Shielding Angle:



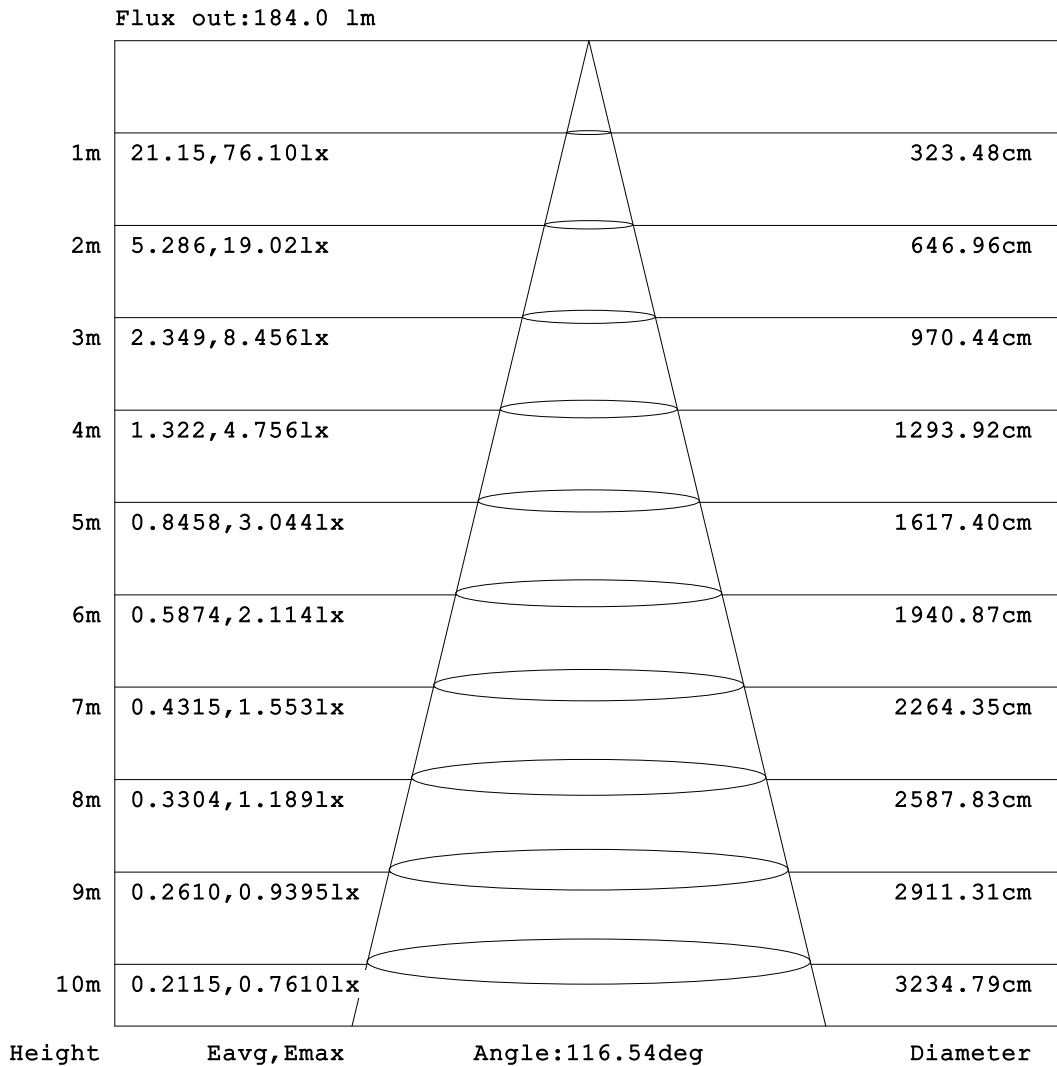
C Range: 0 - 360DEG  
 C Interval: 15.0DEG  
 Test Speed: HIGH  
 Temperature: 25.3°C  
 Operators: DAMIN  
 Test Date: 2024-04-30

γ Range: 0 - 180DEG  
 γ Interval: 1.0DEG  
 Test System: EVERFINE GO-2000B\_V1 SYSTEM V2.00.471  
 Humidity: 65.0%  
 Test Distance: 4.880m [K=1.0000]  
 Remarks:



**AAI Figure**

NAME: LED Strip	TYPE: Indoor lighting	WEIGHT: 75g
SPEC.: COB LED	DIM.: 500*5*1.9MM	SERIAL No.: 20240429001
MFR.: EVERFINE	SUR.: 500*5MM	Shielding Angle:



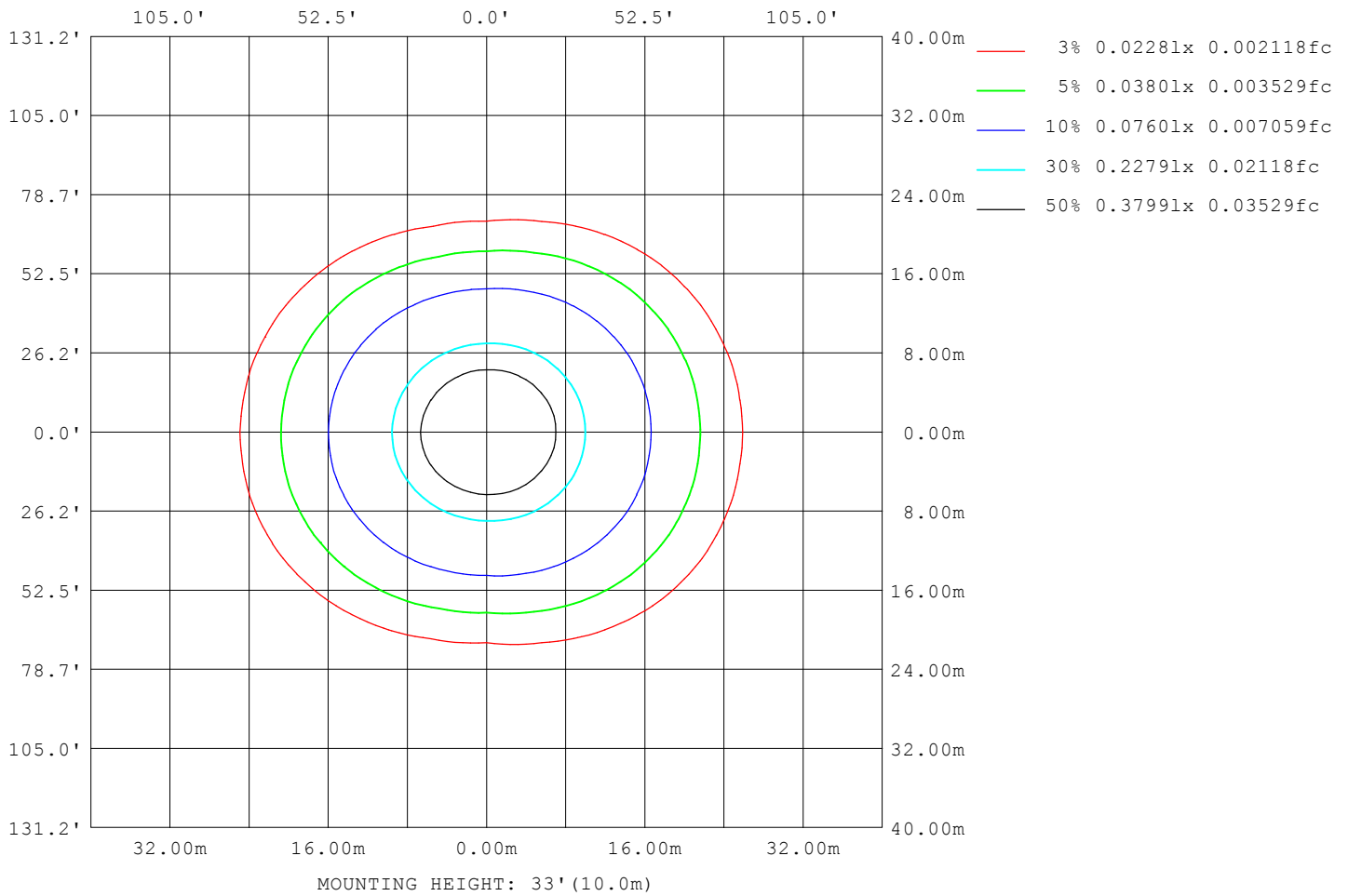
Note: The Curves indicate the illuminated area and the average illumination when the luminaire is at different distance.

C Range: 0 - 360DEG  
 C Interval: 15.0DEG  
 Test Speed: HIGH  
 Temperature: 25.3°C  
 Operators: DAMIN  
 Test Date: 2024-04-30

γ Range: 0 - 180DEG  
 γ Interval: 1.0DEG  
 Test System: EVERFINE GO-2000B\_V1 SYSTEM V2.00.471  
 Humidity: 65.0%  
 Test Distance: 4.880m [K=1.0000]  
 Remarks:

**ISOLUX DIAGRAM**

NAME: LED Strip	TYPE: Indoor lighting	WEIGHT: 75g
SPEC.: COB LED	DIM.: 500*5*1.9MM	SERIAL No.: 20240429001
MFR.: EVERFINE	SUR.: 500*5MM	Shielding Angle:



C Range: 0 - 360DEG  
 C Interval: 15.0DEG  
 Test Speed: HIGH  
 Temperature: 25.3°C  
 Operators: DAMIN  
 Test Date: 2024-04-30

γ Range: 0 - 180DEG  
 γ Interval: 1.0DEG  
 Test System: EVERFINE GO-2000B\_V1 SYSTEM V2.00.471  
 Humidity: 65.0%  
 Test Distance: 4.880m [K=1.0000]  
 Remarks:

LED Avg.L Report

NAME: LED Strip	TYPE: Indoor lighting	WEIGHT: 75g
SPEC.: COB LED	DIM.: 500*5*1.9MM	SERIAL No.: 20240429001
MFR.: EVERFINE	SUR.: 500*5MM	Shielding Angle:

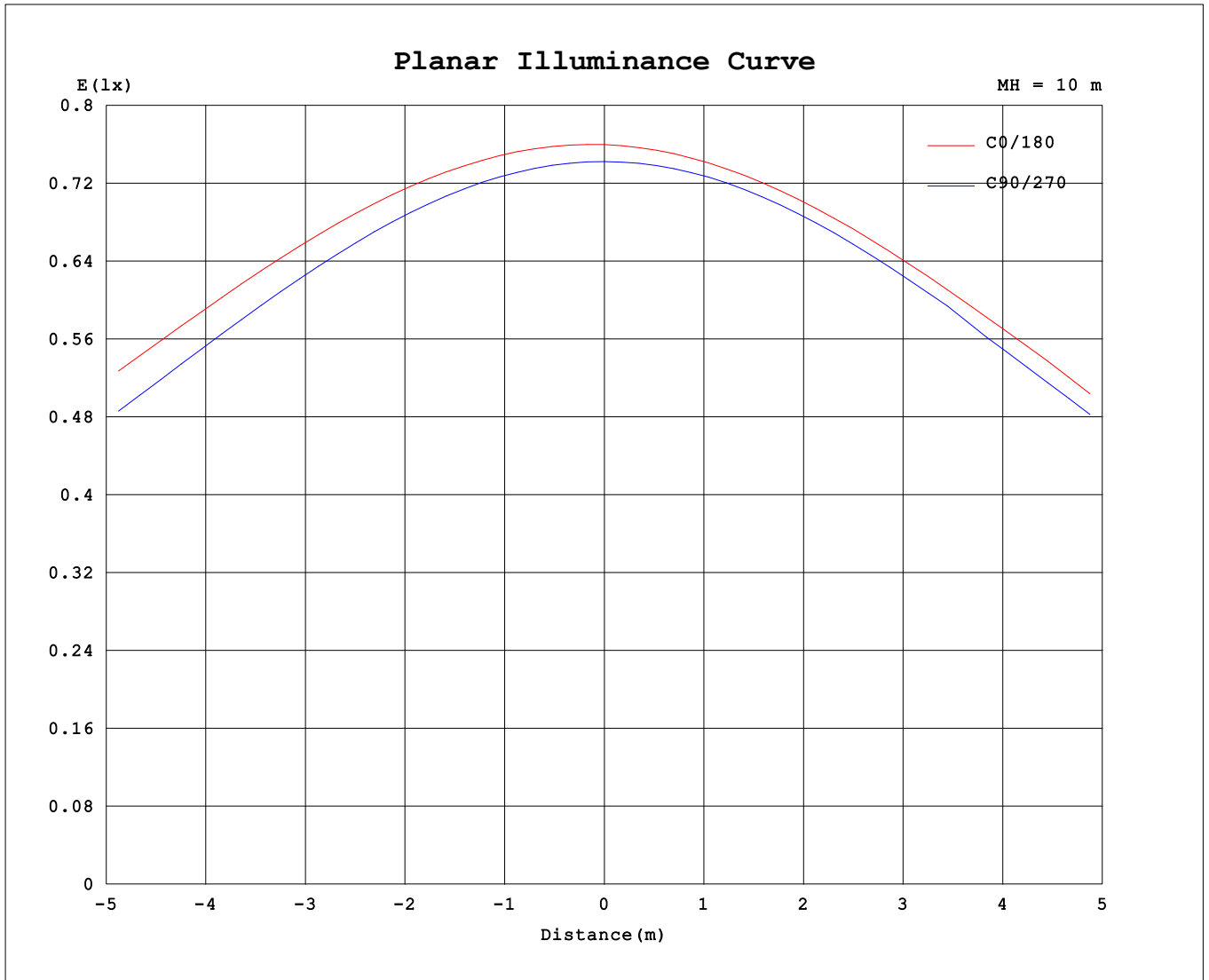
AvgL	cd/m2
L_0~180 (65) av	23074
L_0~180 (75) av	32453
L_0~180 (85) av	76504
L_90~270 (65) av	13956
L_90~270 (75) av	12446
L_90~270 (85) av	10463
L_45 (65) av	19669
L_45 (75) av	25659
L_45 (85) av	56161

Standard: GB/T 29293-2012

C Range: 0 - 360DEG  
 C Interval: 15.0DEG  
 Test Speed: HIGH  
 Temperature:25.3°C  
 Operators:DAMIN  
 Test Date:2024-04-30

γ Range: 0 - 180DEG  
 γ Interval: 1.0DEG  
 Test System:EVERFINE GO-2000B\_V1 SYSTEM V2.00.471  
 Humidity:65.0%  
 Test Distance:4.880m [K=1.0000]  
 Remarks:

**Planar Illuminance Curve**



C Range: 0 - 360DEG  
 C Interval: 15.0DEG  
 Test Speed: HIGH  
 Temperature: 25.3°C  
 Operators: DAMIN  
 Test Date: 2024-04-30

γ Range: 0 - 180DEG  
 γ Interval: 1.0DEG  
 Test System: EVERFINE GO-2000B\_V1 SYSTEM V2.00.471  
 Humidity: 65.0%  
 Test Distance: 4.880m [K=1.0000]  
 Remarks:

LUMINOUS DISTRIBUTION INTENSITY DATA

NAME: LED Strip	TYPE: Indoor lighting	WEIGHT: 75g
SPEC.: COB LED	DIM.: 500*5*1.9MM	SERIAL No.: 20240429001
MFR.: EVERFINE	SUR.: 500*5MM	Shielding Angle:

Table--1

UNIT: cd

C (DEG) \ γ (DEG)	0	15	30	45	60	75	90	105	120	135	150	165	180	195	210	225	240	255	270
0	76.0	75.5	74.8	74.6	74.6	74.4	74.2	74.3	74.5	74.8	75.4	76.1	76.0	75.5	74.8	74.6	74.6	74.4	74.2
5	76.1	75.7	75.0	74.7	74.5	74.3	74.0	74.0	74.1	74.3	74.8	75.5	75.5	74.9	74.3	74.1	74.1	74.0	73.9
10	75.9	75.6	74.7	74.3	74.0	73.6	73.2	73.1	73.2	73.4	73.9	74.6	74.6	74.0	73.3	73.1	73.1	73.1	73.1
15	75.3	75.1	74.1	73.5	72.9	72.4	71.8	71.7	71.8	72.1	72.7	73.4	73.4	72.7	72.1	71.7	71.7	71.6	71.7
20	74.3	74.1	73.1	72.3	71.4	70.7	69.9	69.7	69.9	70.5	71.0	71.8	71.9	71.1	70.5	69.9	69.7	69.6	69.7
25	73.0	72.8	71.6	70.7	69.5	68.2	67.5	67.1	67.6	68.1	69.1	69.8	69.9	69.2	68.2	67.6	67.2	67.1	67.0
30	71.2	71.1	69.8	68.3	67.0	65.4	64.5	64.2	64.8	65.6	66.7	67.4	67.6	66.9	65.8	65.0	64.3	64.1	64.1
35	69.2	68.9	67.6	65.8	64.1	62.2	61.0	60.8	61.6	62.7	64.0	64.9	65.1	64.3	63.1	62.0	61.0	60.6	60.5
40	66.8	66.6	65.2	62.9	60.8	58.4	57.0	56.9	58.0	59.4	61.0	62.1	62.4	61.5	60.1	58.7	57.3	56.6	56.6
45	64.2	63.9	62.3	59.7	57.0	54.2	52.5	52.5	54.1	55.9	57.8	59.1	59.4	58.5	56.8	55.0	53.2	52.2	52.1
50	61.2	61.0	59.2	56.2	52.9	49.5	47.5	47.8	49.8	52.1	54.3	55.9	56.2	55.2	53.4	51.2	48.8	47.4	47.1
55	58.1	57.8	55.8	52.4	48.5	44.4	42.0	42.5	45.2	48.1	50.7	52.5	52.9	51.8	49.7	47.1	44.2	42.1	41.7
60	54.8	54.4	52.2	48.4	43.7	38.8	35.9	37.0	40.3	43.9	47.0	49.0	49.5	48.4	46.0	42.9	39.3	36.3	35.8
65	51.4	50.8	48.5	44.2	38.7	33.0	29.5	31.1	35.2	39.6	43.3	45.6	46.1	45.0	42.3	38.7	34.3	30.4	29.5
70	47.9	47.2	44.7	39.9	33.5	26.9	22.8	25.2	30.2	35.5	39.8	42.3	42.8	41.7	38.7	34.4	29.3	24.4	22.9
75	44.4	43.6	40.8	35.6	28.5	20.9	16.1	19.3	25.5	31.6	36.2	39.0	39.6	38.4	35.3	30.5	24.5	18.5	16.1
80	40.5	39.6	36.5	31.3	23.6	15.2	9.79	13.9	21.1	27.8	32.3	35.1	35.8	34.6	31.7	26.7	20.1	13.1	9.81
85	35.7	35.0	31.8	26.5	18.8	10.1	4.55	9.36	16.7	23.0	27.4	30.2	30.9	29.7	26.9	22.1	15.8	8.43	4.57
90	30.8	30.0	26.7	21.5	14.2	6.24	0.79	5.58	12.2	18.3	22.5	25.3	25.9	24.7	21.9	17.2	11.4	4.85	0.88
95	26.1	25.2	21.7	16.2	8.05	0.81	0.38	0.68	3.13	8.57	12.8	15.9	16.9	15.5	12.8	7.93	2.81	0.45	0.38
100	15.8	14.8	10.7	5.13	0.81	0.43	0.35	0.44	0.68	1.54	2.70	4.38	4.75	3.65	2.16	1.03	0.54	0.41	0.37
105	4.96	4.18	1.88	0.75	0.52	0.40	0.35	0.40	0.51	0.62	0.90	1.20	1.26	1.04	0.76	0.55	0.46	0.42	0.39
110	0.86	0.79	0.64	0.54	0.46	0.41	0.40	0.42	0.46	0.51	0.58	0.64	0.67	0.63	0.56	0.52	0.47	0.44	0.44
115	0.61	0.60	0.55	0.50	0.46	0.46	0.44	0.46	0.47	0.53	0.58	0.61	0.63	0.61	0.59	0.53	0.51	0.48	0.49
120	0.58	0.58	0.55	0.54	0.51	0.51	0.49	0.51	0.52	0.57	0.60	0.64	0.66	0.64	0.62	0.58	0.56	0.53	0.53
125	0.60	0.61	0.59	0.58	0.55	0.55	0.54	0.56	0.57	0.61	0.63	0.66	0.68	0.66	0.66	0.62	0.60	0.57	0.58
130	0.64	0.65	0.63	0.62	0.59	0.59	0.58	0.60	0.61	0.65	0.66	0.69	0.71	0.69	0.69	0.66	0.64	0.61	0.62
135	0.67	0.68	0.66	0.66	0.63	0.64	0.62	0.65	0.65	0.68	0.69	0.72	0.74	0.72	0.72	0.69	0.68	0.66	0.66
140	0.70	0.71	0.70	0.70	0.67	0.68	0.66	0.69	0.69	0.71	0.72	0.75	0.76	0.74	0.75	0.72	0.72	0.70	0.70
145	0.73	0.75	0.73	0.73	0.71	0.72	0.70	0.73	0.72	0.75	0.75	0.77	0.79	0.77	0.77	0.75	0.75	0.73	0.74
150	0.76	0.78	0.76	0.76	0.75	0.75	0.74	0.77	0.76	0.78	0.78	0.80	0.81	0.79	0.80	0.79	0.79	0.77	0.78
155	0.79	0.81	0.79	0.80	0.78	0.79	0.78	0.80	0.79	0.81	0.81	0.82	0.83	0.82	0.83	0.81	0.82	0.81	0.81
160	0.82	0.84	0.82	0.83	0.81	0.83	0.82	0.84	0.83	0.84	0.83	0.85	0.86	0.85	0.85	0.84	0.85	0.84	0.84
165	0.85	0.86	0.85	0.86	0.85	0.86	0.85	0.87	0.86	0.87	0.86	0.87	0.89	0.86	0.88	0.87	0.88	0.87	0.87
170	0.88	0.89	0.88	0.89	0.88	0.89	0.88	0.90	0.88	0.90	0.89	0.90	0.91	0.89	0.90	0.89	0.90	0.89	0.90
175	0.91	0.92	0.90	0.91	0.90	0.91	0.91	0.92	0.91	0.92	0.91	0.92	0.92	0.90	0.92	0.91	0.92	0.91	0.92
180	0.92	0.93	0.93	0.93	0.92	0.92	0.92	0.93	0.92	0.92	0.93	0.93	0.92	0.92	0.93	0.93	0.93	0.92	0.92

C Range: 0 - 360DEG  
 C Interval: 15.0DEG  
 Test Speed: HIGH  
 Temperature: 25.3°C  
 Operators: DAMIN  
 Test Date: 2024-04-30

γ Range: 0 - 180DEG  
 γ Interval: 1.0DEG  
 Test System: EVERFINE GO-2000B\_V1 SYSTEM V2.00.471  
 Humidity: 65.0%  
 Test Distance: 4.880m [K=1.0000]  
 Remarks:

LUMINOUS DISTRIBUTION INTENSITY DATA

NAME: LED Strip	TYPE: Indoor lighting	WEIGHT: 75g
SPEC.: COB LED	DIM.: 500*5*1.9MM	SERIAL No.: 20240429001
MFR.: EVERFINE	SUR.: 500*5MM	Shielding Angle:

Table--2

UNIT: cd

C (DEG) γ (DEG)	285	300	315	330	345														
0	74.3	74.5	74.8	75.4	76.1														
5	74.1	74.5	74.8	75.5	76.2														
10	73.3	73.9	74.4	75.2	76.0														
15	72.0	72.8	73.5	74.6	75.4														
20	70.2	71.3	72.2	73.5	74.5														
25	67.9	69.1	70.5	72.0	73.1														
30	65.1	66.6	68.3	69.9	71.3														
35	61.8	63.7	65.7	67.5	69.2														
40	58.0	60.3	62.8	64.9	66.7														
45	53.8	56.6	59.5	62.0	64.0														
50	49.2	52.5	55.9	58.8	60.9														
55	44.1	48.0	52.0	55.4	57.6														
60	38.7	43.3	47.9	51.8	54.2														
65	32.8	38.4	43.8	48.0	50.7														
70	26.9	33.4	39.5	44.1	47.0														
75	20.9	28.5	35.1	40.2	43.4														
80	15.2	23.7	30.8	36.2	39.5														
85	10.2	19.0	26.2	31.7	34.7														
90	5.57	14.3	21.4	26.7	29.8														
95	1.17	9.15	16.4	22.0	25.1														
100	0.50	1.39	6.30	12.3	15.6														
105	0.44	0.56	0.90	3.01	5.05														
110	0.44	0.49	0.57	0.61	0.86														
115	0.48	0.51	0.53	0.56	0.58														
120	0.53	0.55	0.56	0.58	0.58														
125	0.57	0.59	0.60	0.62	0.62														
130	0.61	0.63	0.63	0.66	0.65														
135	0.65	0.67	0.67	0.69	0.68														
140	0.69	0.71	0.70	0.72	0.72														
145	0.73	0.74	0.73	0.75	0.74														
150	0.76	0.77	0.77	0.78	0.77														
155	0.80	0.81	0.80	0.81	0.80														
160	0.83	0.84	0.83	0.84	0.83														
165	0.86	0.87	0.86	0.87	0.86														
170	0.88	0.90	0.88	0.89	0.88														
175	0.91	0.92	0.90	0.91	0.91														
180	0.92	0.92	0.92	0.93	0.93														

C Range: 0 - 360DEG  
 C Interval: 15.0DEG  
 Test Speed: HIGH  
 Temperature:25.3°C  
 Operators:DAMIN  
 Test Date:2024-04-30

γ Range: 0 - 180DEG  
 γ Interval: 1.0DEG  
 Test System:EVERFINE GO-2000B\_V1 SYSTEM V2.00.471  
 Humidity:65.0%  
 Test Distance:4.880m [K=1.0000]  
 Remarks: