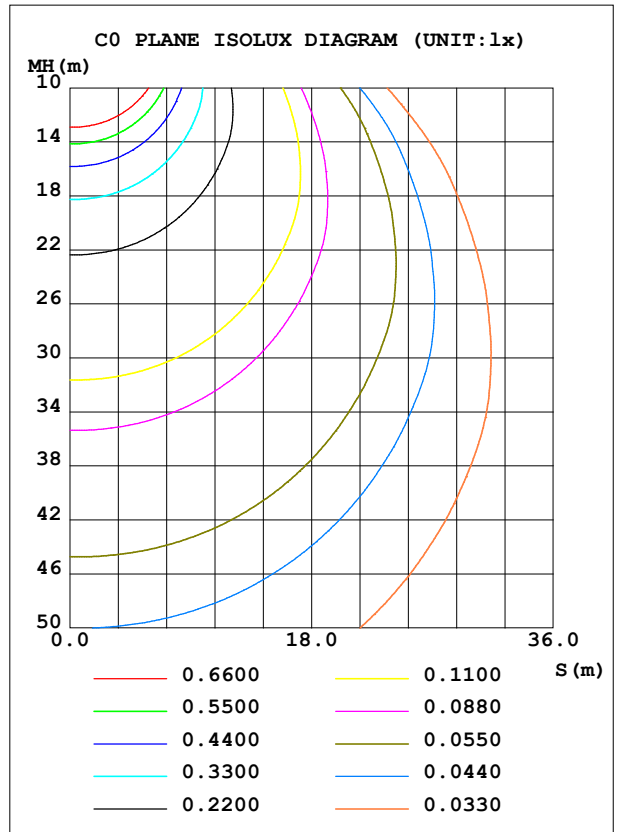
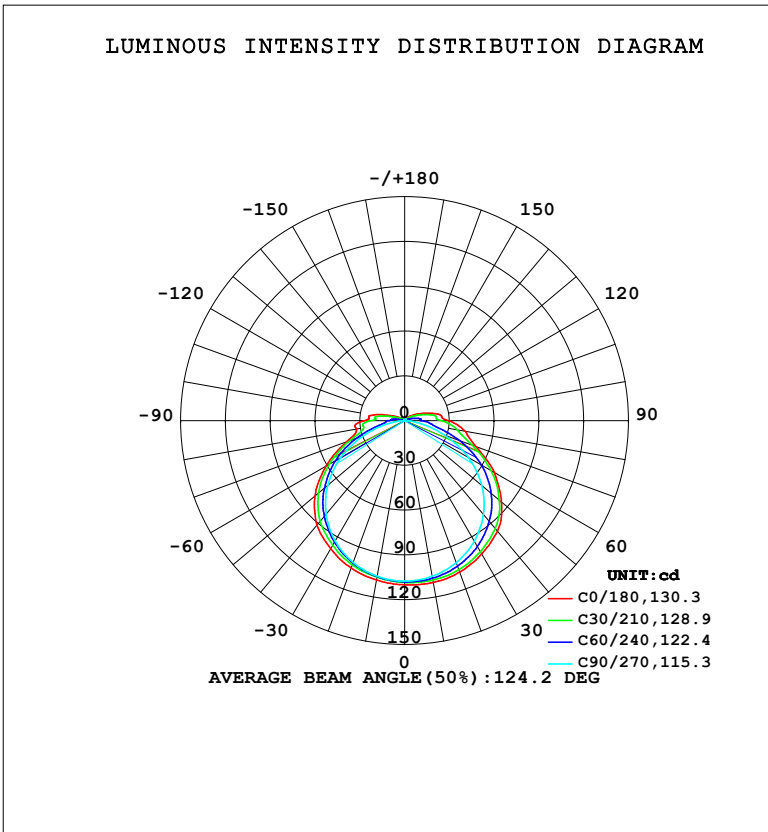


LUMINAIRE PHOTOMETRIC TEST REPORT

NAME: LED Strip	TYPE: Indoor lighting	WEIGHT: 75g
SPEC.: COB LED	DIM.: 500*10*1.9MM	SERIAL No.: 20240627007
MFR.: EVERFINE	SUR.: 500*10MM	Shielding Angle:

DATA OF LAMP		PHOTOMETRIC DATA			
MODEL: 1500-UR-3S-IC-EP (8.4W)		Imax (cd)	110.3	S/MH (C0/180)	1.35
NOMINAL POWER (W)	4.23209	LOR (%)	100.0	S/MH (C90/270)	1.29
RATED VOLTAGE (V)	DC 24V	TOTAL FLUX (lm)	408.32	η UP, DN (C0-180)	4.4, 46.0
NOMINAL FLUX (lm)	408.315	CIE CLASS	DIRECT	η UP, DN (C180-360)	4.2, 45.5
LAMPS INSIDE	1	η up (%)	8.6	CIBSE SHR NOM	1.50
TEST VOLTAGE (V)	DC 24V	η down (%)	91.4	CIBSE SHR MAX	1.55



C Range: 0 - 360DEG
 C Interval: 15.0DEG
 Test Speed: HIGH
 Temperature: 25.3°C
 Operators: DAMIN
 Test Date: 2024-07-02

γ Range: 0 - 180DEG
 γ Interval: 1.0DEG
 Test System: EVERFINE GO-2000B_V1 SYSTEM V2.00.471
 Humidity: 65.0%
 Test Distance: 4.880m [K=1.0000]
 Remarks:

ZONAL FLUX DIAGRAM

ZONAL FLUX DIAGRAM:

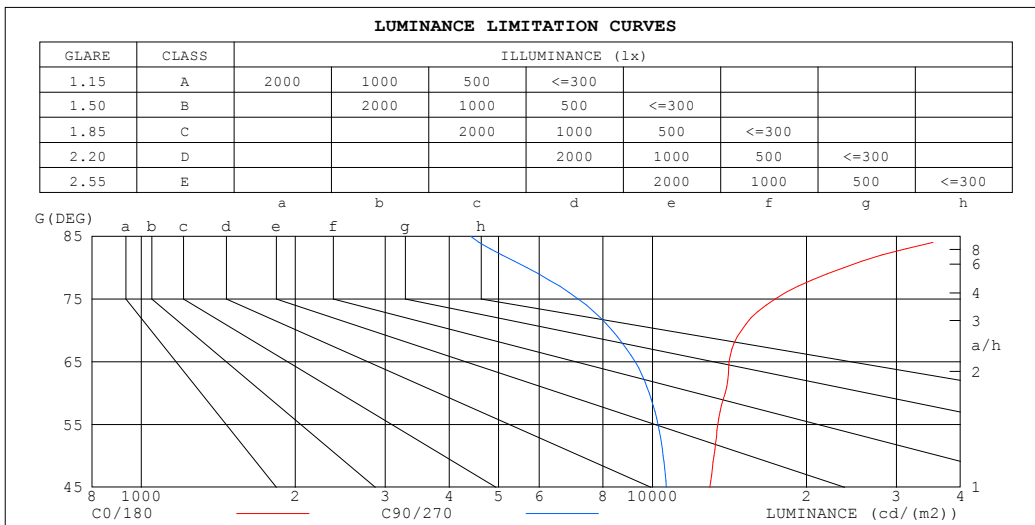
γ	C0	C45	C90	C135	C180	C225	C270	C315	γ	Φ zone	Φ total	%lum,lamp
10	110.1	107.8	106.0	106.4	108.4	106.1	105.9	107.8	0- 10	10.30	10.30	2.52,2.52
20	108.0	105.1	101.3	102.4	105.1	101.9	101.1	104.9	10- 20	29.93	40.23	9.85,9.85
30	103.2	99.61	93.35	95.63	99.01	95.03	93.12	99.34	20- 30	46.56	86.79	21.3,21.3
40	96.73	91.59	82.14	86.36	91.40	85.73	81.89	91.16	30- 40	58.37	145.2	35.6,35.6
50	84.72	79.83	67.45	73.16	78.44	72.64	67.11	79.34	40- 50	63.65	208.8	51.1,51.1
60	69.34	63.65	49.26	56.36	60.74	56.37	49.25	63.48	50- 60	60.30	269.1	65.9,65.9
70	51.05	43.85	28.53	36.12	41.15	36.42	28.91	43.99	60- 70	48.59	317.7	77.8,77.8
80	41.14	29.34	9.865	22.42	32.89	22.31	10.10	28.80	70- 80	32.81	350.5	85.8,85.8
90	29.28	18.99	1.072	17.35	26.97	17.38	0.7610	18.67	80- 90	22.81	373.3	91.4,91.4
100	23.92	15.69	0.4509	12.77	21.88	12.36	0.4715	15.10	90-100	15.48	388.8	95.2,95.2
110	14.80	8.362	0.5411	5.045	10.11	4.297	0.5891	8.505	100-110	9.783	398.6	97.6,97.6
120	8.476	3.716	0.6796	2.207	4.426	1.860	0.7253	4.013	110-120	4.572	403.2	98.7,98.7
130	4.562	1.758	0.8135	1.310	2.285	1.217	0.8580	1.719	120-130	2.189	405.4	99.3,99.3
140	2.407	1.013	0.9462	1.053	1.471	1.061	0.9861	1.333	130-140	1.202	406.6	99.6,99.6
150	1.378	1.077	1.072	1.121	1.195	1.128	1.105	1.085	140-150	0.7480	407.3	99.8,99.8
160	1.174	1.182	1.184	1.215	1.251	1.216	1.208	1.186	150-160	0.5354	407.8	99.9,99.9
170	1.275	1.278	1.276	1.298	1.320	1.292	1.298	1.276	160-170	0.3520	408.2	100,100
180	1.346	1.333	1.335	1.344	1.351	1.332	1.336	1.335	170-180	0.1250	408.3	100,100
DEG	LUMINOUS INTENSITY:cd									UNIT:lm		

C Range: 0 - 360DEG
 C Interval: 15.0DEG
 Test Speed: HIGH
 Temperature:25.3°C
 Operators:DAMIN
 Test Date:2024-07-02

γ Range: 0 - 180DEG
 γ Interval: 1.0DEG
 Test System:EVERFINE GO-2000B_V1 SYSTEM V2.00.471
 Humidity:65.0%
 Test Distance:4.880m [K=1.0000]
 Remarks:

LUMINANCE LIMITATION CURVES

NAME: LED Strip	TYPE: Indoor lighting	WEIGHT: 75g
SPEC.: COB LED	DIM.: 500*10*1.9MM	SERIAL No.: 20240627007
MFR.: EVERFINE	SUR.: 500*10MM	Shielding Angle:



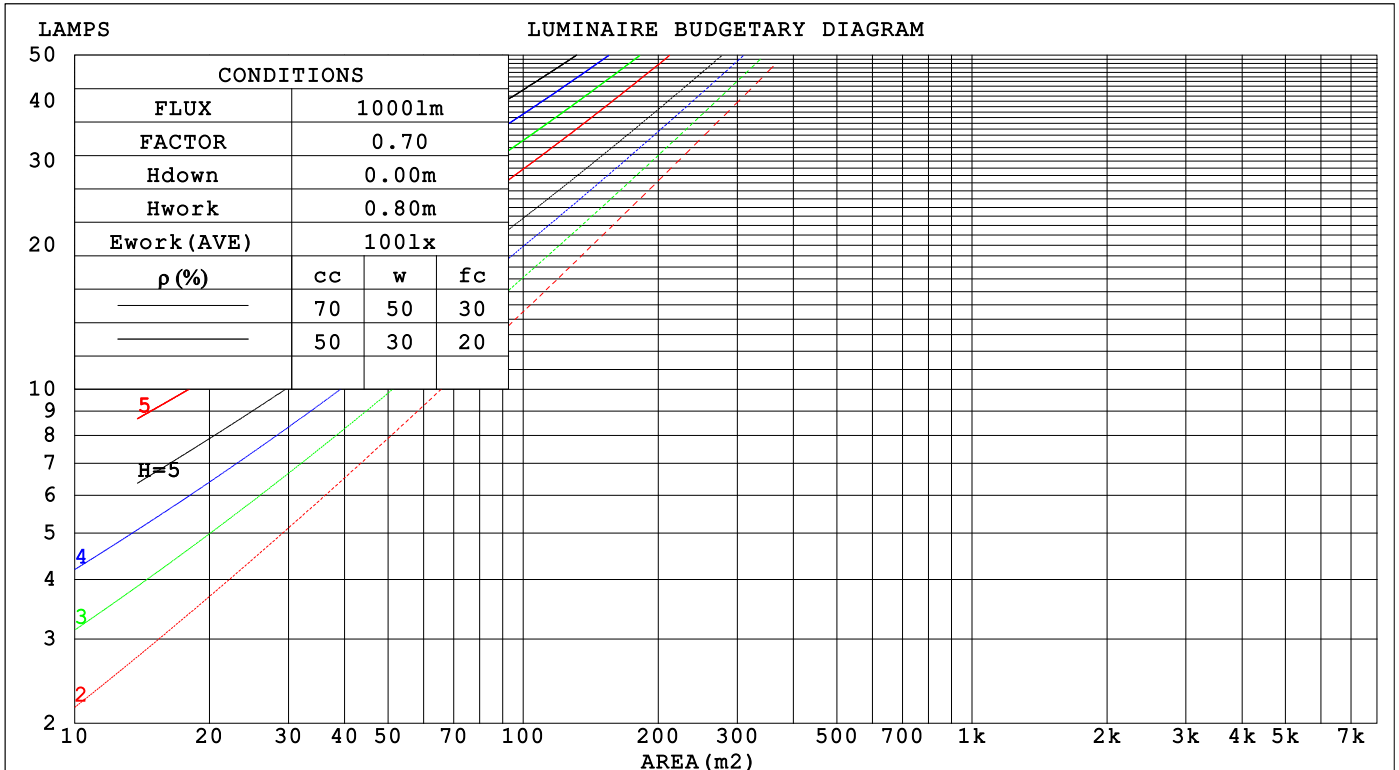
C Range: 0 - 360DEG
 C Interval: 15.0DEG
 Test Speed: HIGH
 Temperature: 25.3°C
 Operators: DAMIN
 Test Date: 2024-07-02

γ Range: 0 - 180DEG
 γ Interval: 1.0DEG
 Test System: EVERFINE GO-2000B_V1 SYSTEM V2.00.471
 Humidity: 65.0%
 Test Distance: 4.880m [K=1.0000]
 Remarks:

CU AND LUMINAIRE BUDGETARY ESTIMATE DIAGRAM

NAME: LED Strip	TYPE: Indoor lighting	WEIGHT: 75g
SPEC.: COB LED	DIM.: 500*10*1.9MM	SERIAL No.: 20240627007
MFR.: EVERFINE	SUR.: 500*10MM	Shielding Angle:

pcc	80%			70%			50%			30%			10%			0
pw	50%	30%	10%	50%	30%	10%	50%	30%	10%	50%	30%	10%	50%	30%	10%	0
pfc	20%			20%			20%			20%			20%			0
RCR	RCR:Room Cavity Ratio						Coefficients of Utilization(CU)									
0.0	1.17	1.17	1.17	1.13	1.13	1.13	1.06	1.06	1.06	1.00	1.00	1.00	.94	.94	.94	.91
1.0	.99	.94	.90	.96	.92	.88	.90	.87	.83	.85	.82	.79	.80	.78	.75	.73
2.0	.86	.78	.72	.83	.76	.70	.78	.72	.67	.73	.69	.65	.69	.65	.62	.59
3.0	.75	.66	.59	.72	.64	.58	.68	.61	.56	.64	.58	.54	.60	.56	.52	.49
4.0	.66	.56	.49	.64	.55	.49	.60	.53	.47	.57	.50	.45	.54	.48	.44	.41
5.0	.58	.49	.42	.57	.48	.41	.54	.46	.40	.51	.44	.39	.48	.42	.38	.35
6.0	.52	.43	.36	.51	.42	.36	.48	.41	.35	.46	.39	.34	.43	.38	.33	.31
7.0	.47	.38	.32	.46	.38	.32	.44	.36	.31	.42	.35	.30	.39	.34	.29	.27
8.0	.43	.34	.28	.42	.34	.28	.40	.33	.27	.38	.31	.27	.36	.30	.26	.24
9.0	.39	.31	.25	.38	.30	.25	.37	.29	.24	.35	.28	.24	.33	.28	.23	.21
10.0	.36	.28	.23	.35	.28	.23	.34	.27	.22	.32	.26	.22	.31	.25	.21	.19



C Range: 0 - 360DEG
 C Interval: 15.0DEG
 Test Speed: HIGH
 Temperature: 25.3°C
 Operators: DAMIN
 Test Date: 2024-07-02

γ Range: 0 - 180DEG
 γ Interval: 1.0DEG
 Test System: EVERFINE GO-2000B_V1 SYSTEM V2.00.471
 Humidity: 65.0%
 Test Distance: 4.880m [K=1.0000]
 Remarks:

WEC AND CCEC

NAME: LED Strip	TYPE: Indoor lighting	WEIGHT: 75g
SPEC.: COB LED	DIM.: 500*10*1.9MM	SERIAL No.: 20240627007
MFR.: EVERFINE	SUR.: 500*10MM	Shielding Angle:

ρ_{cc}	80%			70%			50%			30%			10%			0
ρ_w	50%	30%	10%	50%	30%	10%	50%	30%	10%	50%	30%	10%	50%	30%	10%	0
ρ_{fc}	20%			20%			20%			20%			20%			0
RCR	RCR:Room Cavity Ratio						Wall Exitance Coefficients (WEC)									
0.0																
1.0	.357	.203	.064	.347	.198	.063	.329	.189	.060	.312	.180	.058	.297	.172	.055	
2.0	.318	.174	.053	.309	.170	.052	.293	.163	.051	.278	.156	.049	.264	.149	.047	
3.0	.287	.153	.046	.279	.149	.045	.264	.143	.044	.251	.137	.042	.238	.132	.041	
4.0	.261	.136	.040	.254	.133	.039	.241	.128	.038	.228	.123	.037	.217	.118	.036	
5.0	.239	.122	.035	.233	.119	.035	.221	.115	.034	.209	.111	.033	.199	.106	.032	
6.0	.220	.110	.032	.214	.108	.031	.203	.104	.030	.193	.101	.030	.184	.097	.029	
7.0	.204	.101	.029	.199	.099	.028	.189	.095	.027	.180	.092	.027	.171	.089	.026	
8.0	.189	.093	.026	.185	.091	.026	.176	.088	.025	.167	.085	.024	.160	.082	.024	
9.0	.177	.086	.024	.173	.084	.024	.165	.081	.023	.157	.079	.023	.150	.076	.022	
10.0	.166	.080	.022	.162	.078	.022	.155	.076	.021	.148	.073	.021	.141	.071	.020	

ρ_{cc}	80%			70%			50%			30%			10%			0
ρ_w	50%	30%	10%	50%	30%	10%	50%	30%	10%	50%	30%	10%	50%	30%	10%	0
ρ_{fc}	20%			20%			20%			20%			20%			0
RCR	RCR:Room Cavity Ratio						Ceiling Cavity Exitance Coefficients (CCEC)									
0.0	.256	.256	.256	.219	.219	.219	.149	.149	.149	.086	.086	.086	.027	.027	.027	
1.0	.249	.222	.196	.213	.190	.169	.146	.131	.117	.084	.076	.068	.027	.024	.022	
2.0	.242	.198	.161	.207	.170	.139	.142	.118	.097	.082	.069	.057	.026	.022	.019	
3.0	.234	.181	.139	.201	.156	.120	.138	.108	.084	.080	.063	.050	.026	.021	.016	
4.0	.227	.168	.123	.195	.145	.107	.134	.101	.076	.077	.059	.045	.025	.019	.015	
5.0	.219	.158	.113	.188	.137	.098	.130	.096	.069	.075	.056	.041	.024	.018	.014	
6.0	.212	.150	.106	.182	.130	.092	.126	.091	.065	.073	.053	.039	.024	.017	.013	
7.0	.205	.143	.100	.176	.124	.087	.122	.087	.062	.071	.051	.037	.023	.017	.012	
8.0	.198	.138	.096	.171	.119	.084	.118	.084	.059	.069	.049	.035	.022	.016	.012	
9.0	.192	.133	.093	.165	.115	.081	.115	.081	.057	.067	.048	.034	.022	.016	.011	
10.0	.186	.128	.090	.160	.112	.079	.111	.078	.056	.065	.046	.033	.021	.015	.011	

C Range: 0 - 360DEG
 C Interval: 15.0DEG
 Test Speed: HIGH
 Temperature: 25.3°C
 Operators: DAMIN
 Test Date: 2024-07-02

γ Range: 0 - 180DEG
 γ Interval: 1.0DEG
 Test System: EVERFINE GO-2000B_V1 SYSTEM V2.00.471
 Humidity: 65.0%
 Test Distance: 4.880m [K=1.0000]
 Remarks:

UGR(Unified Glare Rating) Table

NAME: LED Strip		TYPE: Indoor lighting				WEIGHT: 75g				
SPEC.: COB LED		DIM.: 500*10*1.9MM				SERIAL No.: 20240627007				
MFR.: EVERFINE		SUR.: 500*10MM				Shielding Angle:				
ceiling/cavity	0.7	0.7	0.5	0.5	0.3	0.7	0.7	0.5	0.5	0.3
walls	0.5	0.3	0.5	0.3	0.3	0.5	0.3	0.5	0.3	0.3
working plane	0.2	0.2	0.2	0.2	0.2	0.2	0.2	0.2	0.2	0.2
Room dimensions	Viewed crosswise					Viewed endwise				
x = 2H y = 2H	25.0	26.5	25.4	26.8	27.2	23.7	25.2	24.1	25.5	25.9
3H	27.0	28.4	27.4	28.8	29.2	25.1	26.4	25.5	26.8	27.2
4H	28.1	29.4	28.6	29.8	30.3	25.6	26.9	26.0	27.3	27.7
6H	29.4	30.7	29.9	31.1	31.5	25.8	27.1	26.3	27.5	27.9
8H	30.2	31.4	30.7	31.8	32.3	25.9	27.1	26.4	27.5	28.0
12H	31.1	32.2	31.5	32.6	33.1	25.9	27.0	26.4	27.5	28.0
4H 2H	25.6	26.9	26.0	27.3	27.7	24.6	25.9	25.0	26.3	26.7
3H	27.8	28.9	28.3	29.4	29.9	26.2	27.3	26.7	27.8	28.3
4H	29.1	30.1	29.6	30.6	31.1	26.8	27.9	27.3	28.4	28.9
6H	30.7	31.6	31.2	32.1	32.6	27.2	28.2	27.8	28.7	29.2
8H	31.5	32.4	32.1	32.9	33.5	27.4	28.2	27.9	28.7	29.3
12H	32.6	33.4	33.1	33.9	34.5	27.4	28.2	28.0	28.8	29.3
8H 4H	29.4	30.3	29.9	30.8	31.4	27.5	28.3	28.0	28.9	29.4
6H	31.2	32.0	31.8	32.5	33.1	28.2	28.9	28.7	29.4	30.1
8H	32.4	33.0	33.0	33.6	34.2	28.4	29.1	29.0	29.7	30.3
12H	33.7	34.2	34.3	34.8	35.5	28.6	29.2	29.2	29.8	30.4
12H 4H	29.4	30.2	30.0	30.7	31.3	27.7	28.5	28.2	29.0	29.6
6H	31.4	32.0	31.9	32.6	33.2	28.6	29.2	29.2	29.8	30.4
8H	32.6	33.1	33.2	33.7	34.4	29.0	29.6	29.6	30.1	30.8
Variations with the observer position at spacings(CIE Pub.117):										
S = 1.0H	+ 0.1 / - 0.1					+ 0.1 / - 0.2				
1.5H	+ 0.2 / - 0.3					+ 0.3 / - 0.4				
2.0H	+ 0.2 / - 0.4					+ 0.2 / - 0.5				

CIE Pub.117, 408.3 lm Total Lamp Luminous Flux Correct (8log(F/F0) = -3.1)
 Area: 0.01 m2

C Range: 0 - 360DEG
 C Interval: 15.0DEG
 Test Speed: HIGH
 Temperature:25.3°C
 Operators:DAMIN
 Test Date:2024-07-02

γ Range: 0 - 180DEG
 γ Interval: 1.0DEG
 Test System:EVERFINE GO-2000B_V1 SYSTEM V2.00.471
 Humidity:65.0%
 Test Distance:4.880m [K=1.0000]
 Remarks:

UTILIZATION FACTORS TABLE

NAME: LED Strip	TYPE: Indoor lighting	WEIGHT: 75g
SPEC.: COB LED	DIM.: 500*10*1.9MM	SERIAL No.: 20240627007
MFR.: EVERFINE	SUR.: 500*10MM	Shielding Angle:

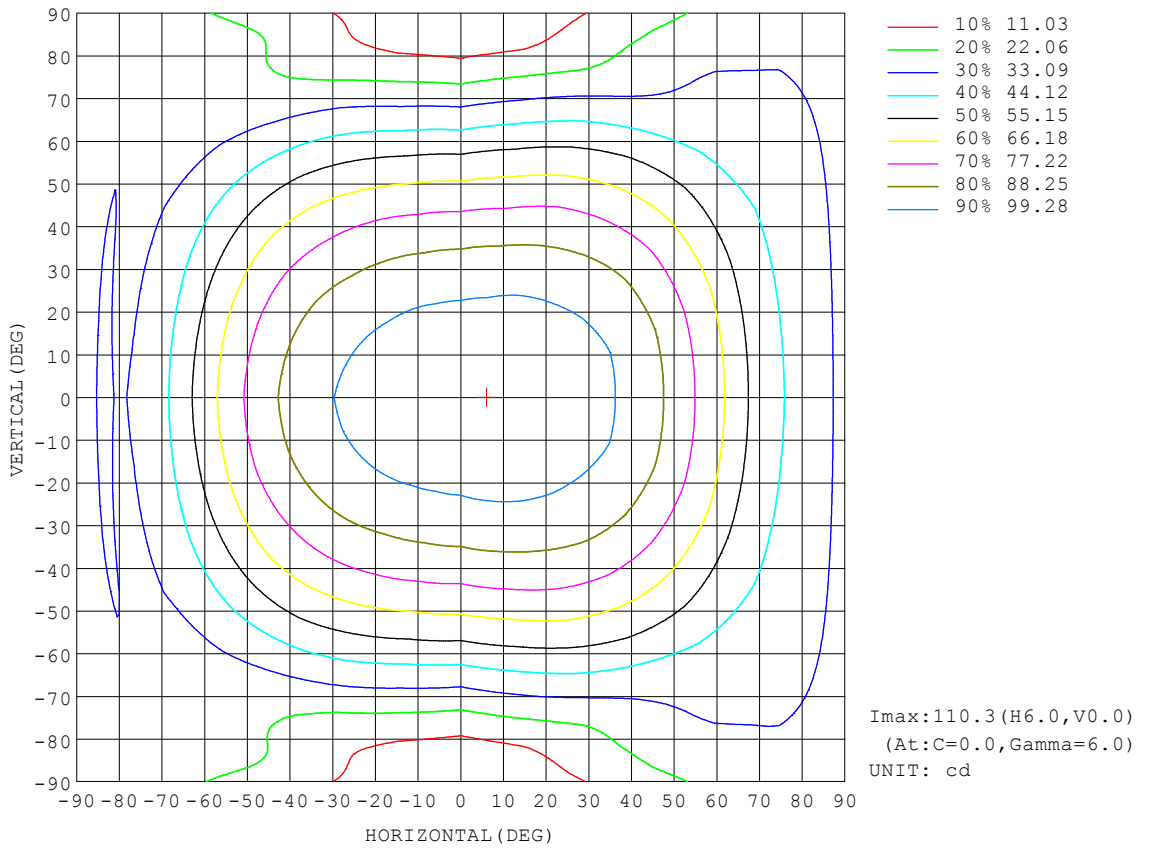
REFLECTANCE										
Ceiling	0.8	0.8	0.8	0.7	0.7	0.7	0.5	0.5	0.5	0
Walls	0.7	0.5	0.3	0.7	0.5	0.3	0.7	0.5	0.3	0
Working plane	0.2	0.2	0.2	0.2	0.2	0.2	0.2	0.2	0.2	0
ROOM INDEX	UTILIZATION FACTORS (PERCENT) $k(RI) \times RCR = 5$									
k = 0.60	52	40	32	51	39	32	49	39	32	25
0.80	61	49	41	60	48	41	58	47	40	33
1.00	70	57	49	68	57	49	65	58	48	40
1.25	77	65	57	75	64	56	72	62	55	47
1.50	82	70	63	80	69	62	76	67	60	51
2.00	89	79	71	87	77	70	82	74	68	59
2.50	93	84	77	91	82	75	86	79	73	63
3.00	97	88	82	94	86	80	89	82	77	67
4.00	101	94	88	98	92	86	92	87	83	71
5.00	104	98	93	101	95	90	95	90	86	74
ROOM INDEX	UF(total)									Direct
According to DIN EN 13032-2 2004			Suspended				SHRNOM = 1.25			

C Range: 0 - 360DEG
 C Interval: 15.0DEG
 Test Speed: HIGH
 Temperature: 25.3°C
 Operators: DAMIN
 Test Date: 2024-07-02

γ Range: 0 - 180DEG
 γ Interval: 1.0DEG
 Test System: EVERFINE GO-2000B_V1 SYSTEM V2.00.471
 Humidity: 65.0%
 Test Distance: 4.880m [K=1.0000]
 Remarks:

ISOCANDELA DIAGRAM

NAME: LED Strip	TYPE: Indoor lighting	WEIGHT: 75g
SPEC.: COB LED	DIM.: 500*10*1.9MM	SERIAL No.: 20240627007
MFR.: EVERFINE	SUR.: 500*10MM	Shielding Angle:



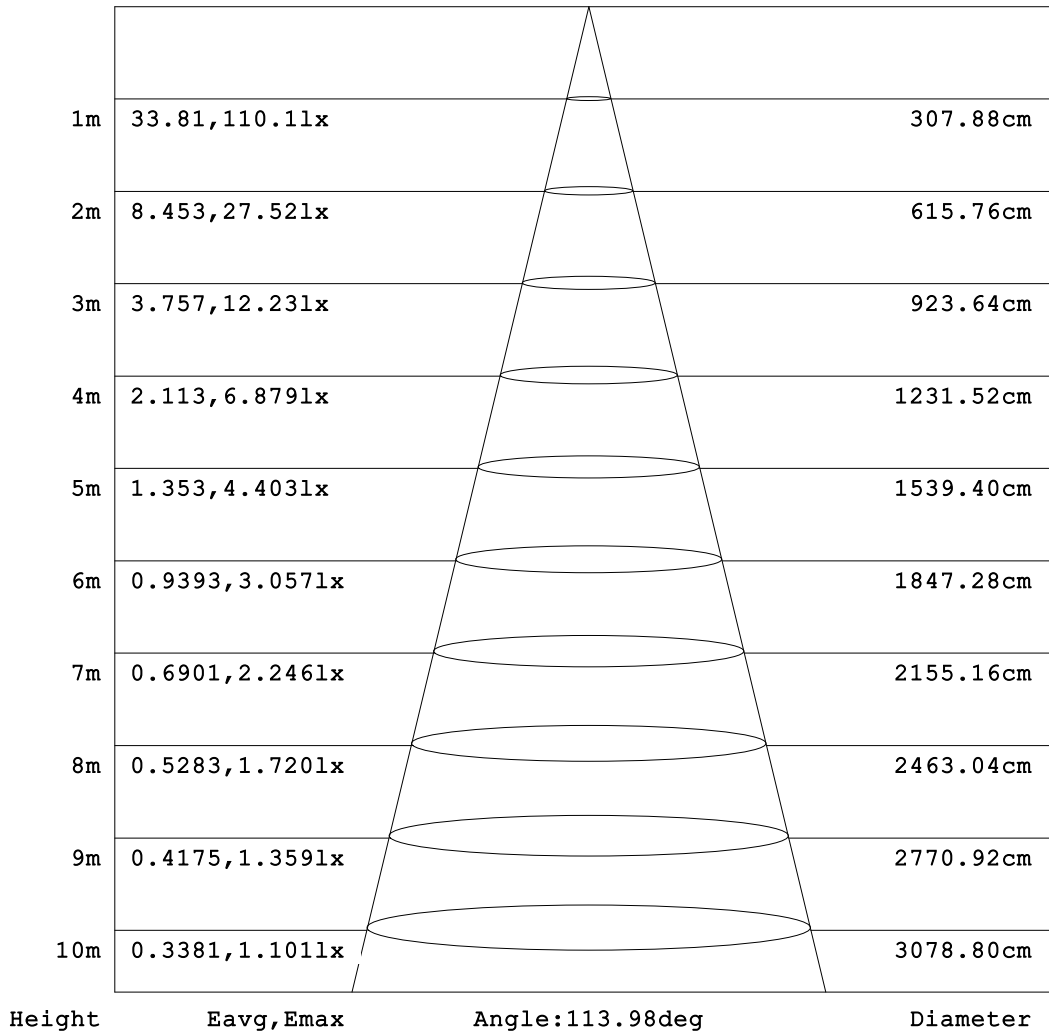
C Range: 0 - 360DEG
 C Interval: 15.0DEG
 Test Speed: HIGH
 Temperature:25.3°C
 Operators:DAMIN
 Test Date:2024-07-02

γ Range: 0 - 180DEG
 γ Interval: 1.0DEG
 Test System:EVERFINE GO-2000B_V1 SYSTEM V2.00.471
 Humidity:65.0%
 Test Distance:4.880m [K=1.0000]
 Remarks:

AAI Figure

NAME: LED Strip	TYPE: Indoor lighting	WEIGHT: 75g
SPEC.: COB LED	DIM.: 500*10*1.9MM	SERIAL No.: 20240627007
MFR.: EVERFINE	SUR.: 500*10MM	Shielding Angle:

Flux out:251.9 lm



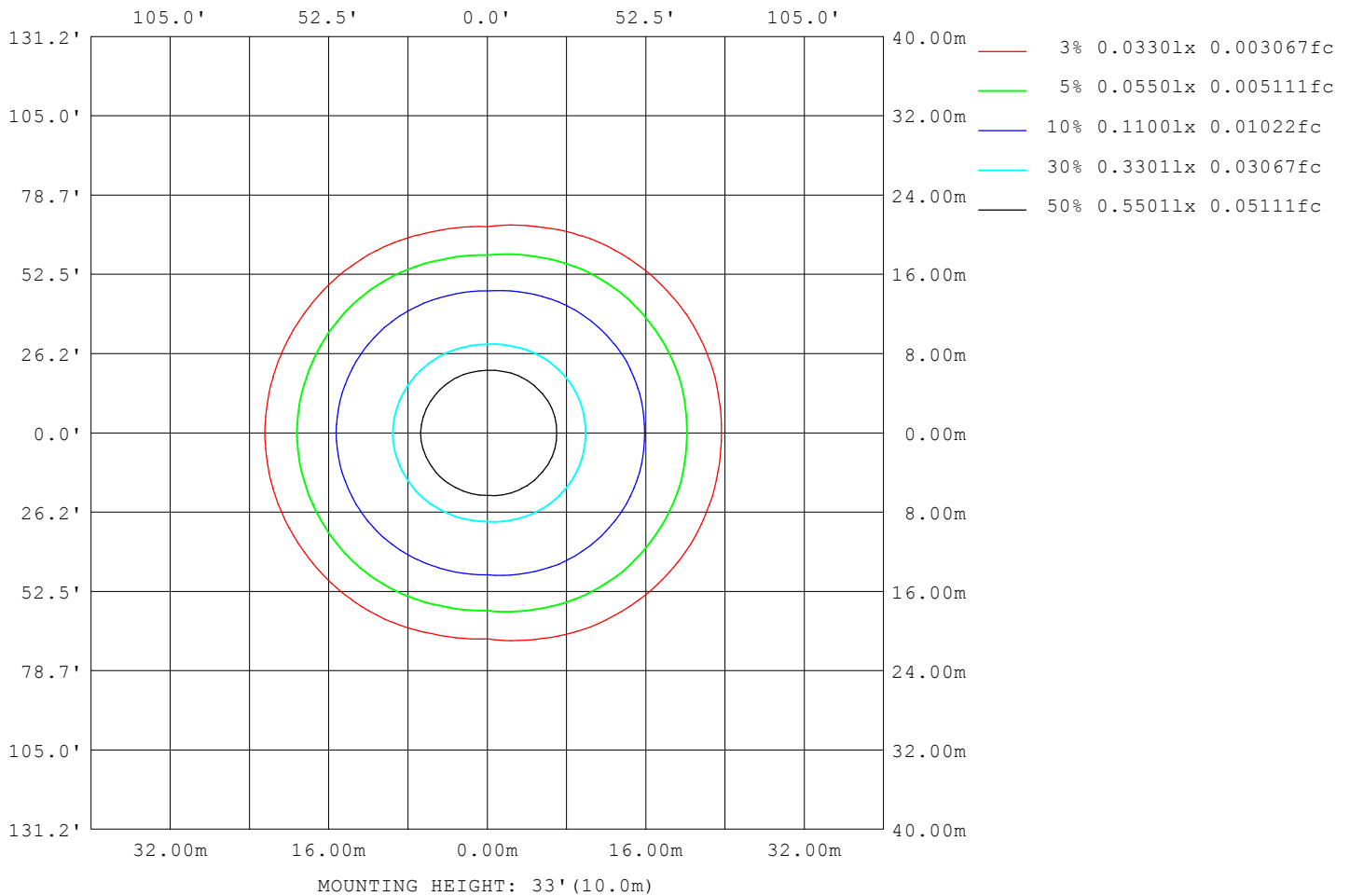
Note: The Curves indicate the illuminated area and the average illumination when the luminaire is at different distance.

C Range: 0 - 360DEG
 C Interval: 15.0DEG
 Test Speed: HIGH
 Temperature: 25.3°C
 Operators: DAMIN
 Test Date: 2024-07-02

γ Range: 0 - 180DEG
 γ Interval: 1.0DEG
 Test System: EVERFINE GO-2000B_V1 SYSTEM V2.00.471
 Humidity: 65.0%
 Test Distance: 4.880m [K=1.0000]
 Remarks:

ISOLUX DIAGRAM

NAME: LED Strip	TYPE: Indoor lighting	WEIGHT: 75g
SPEC.: COB LED	DIM.: 500*10*1.9MM	SERIAL No.: 20240627007
MFR.: EVERFINE	SUR.: 500*10MM	Shielding Angle:



C Range: 0 - 360DEG
 C Interval: 15.0DEG
 Test Speed: HIGH
 Temperature: 25.3°C
 Operators: DAMIN
 Test Date: 2024-07-02

γ Range: 0 - 180DEG
 γ Interval: 1.0DEG
 Test System: EVERFINE GO-2000B_V1 SYSTEM V2.00.471
 Humidity: 65.0%
 Test Distance: 4.880m [K=1.0000]
 Remarks:

LED Avg.L Report

NAME: LED Strip	TYPE: Indoor lighting	WEIGHT: 75g
SPEC.: COB LED	DIM.: 500*10*1.9MM	SERIAL No.: 20240627007
MFR.: EVERFINE	SUR.: 500*10MM	Shielding Angle:

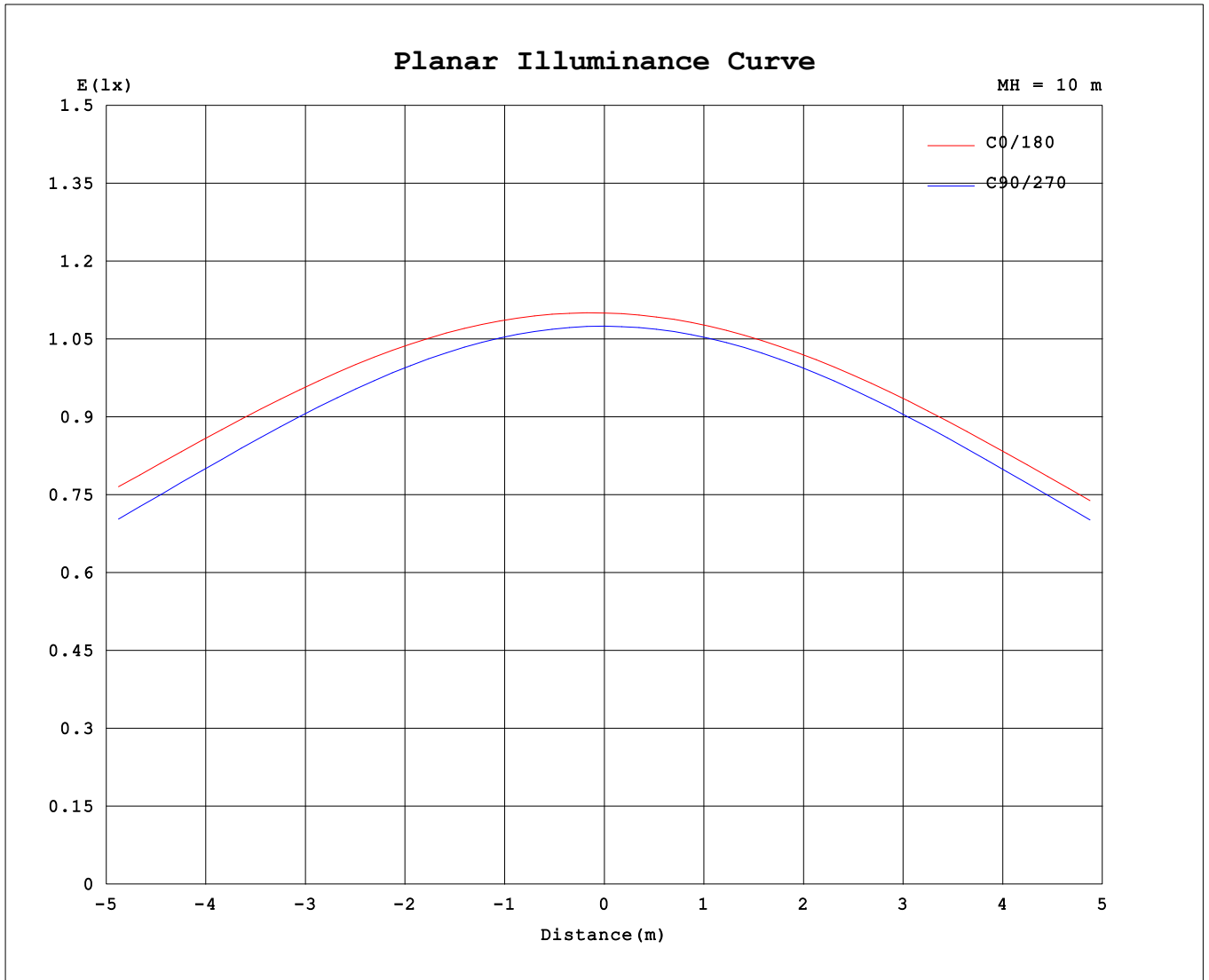
AvgL	cd/m2
L_0~180 (65) av	13086
L_0~180 (75) av	15346
L_0~180 (85) av	39639
L_90~270 (65) av	9264
L_90~270 (75) av	7225
L_90~270 (85) av	4434
L_45 (65) av	11933
L_45 (75) av	12036
L_45 (85) av	26560

Standard: GB/T 29293-2012

C Range: 0 - 360DEG
 C Interval: 15.0DEG
 Test Speed: HIGH
 Temperature:25.3°C
 Operators:DAMIN
 Test Date:2024-07-02

γ Range: 0 - 180DEG
 γ Interval: 1.0DEG
 Test System:EVERFINE GO-2000B_V1 SYSTEM V2.00.471
 Humidity:65.0%
 Test Distance:4.880m [K=1.0000]
 Remarks:

Planar Illuminance Curve



C Range: 0 - 360DEG
 C Interval: 15.0DEG
 Test Speed: HIGH
 Temperature: 25.3°C
 Operators: DAMIN
 Test Date: 2024-07-02

γ Range: 0 - 180DEG
 γ Interval: 1.0DEG
 Test System: EVERFINE GO-2000B_V1 SYSTEM V2.00.471
 Humidity: 65.0%
 Test Distance: 4.880m [K=1.0000]
 Remarks:

LUMINOUS DISTRIBUTION INTENSITY DATA

NAME: LED Strip	TYPE: Indoor lighting	WEIGHT: 75g
SPEC.: COB LED	DIM.: 500*10*1.9MM	SERIAL No.: 20240627007
MFR.: EVERFINE	SUR.: 500*10MM	Shielding Angle:

Table--1

UNIT: cd

C (DEG) γ (DEG)	0	15	30	45	60	75	90	105	120	135	150	165	180	195	210	225	240	255	270
0	110	109	108	108	108	108	107	108	108	108	109	110	110	109	108	108	108	108	107
5	110	110	109	108	108	108	107	107	107	108	108	109	109	109	108	107	107	107	107
10	110	110	108	108	107	107	106	106	106	106	107	108	108	108	107	106	106	106	106
15	109	109	108	107	106	105	104	104	104	105	106	107	107	106	105	104	104	104	104
20	108	108	106	105	104	102	101	101	101	102	103	105	105	104	103	102	102	101	101
25	106	106	104	103	101	99.3	97.7	97.6	98.2	99.4	101	102	102	101	100	98.8	98.2	97.5	97.5
30	103	103	101	99.6	97.5	95.3	93.4	93.3	94.2	95.6	96.9	98.2	99.0	97.7	96.5	95.0	94.1	93.1	93.1
35	100	100	98.1	95.8	93.1	90.5	88.2	88.2	89.4	91.2	92.9	94.6	95.6	94.1	92.5	90.6	89.2	88.0	87.9
40	96.7	96.6	94.4	91.6	88.2	84.8	82.1	82.4	84.0	86.4	88.4	90.3	91.4	89.9	88.1	85.7	83.8	82.1	81.9
45	91.6	91.8	89.5	86.4	82.5	78.4	75.2	75.8	77.7	80.2	82.2	84.3	85.4	83.9	82.1	79.6	77.6	75.5	75.0
50	84.7	84.9	82.8	79.8	75.7	71.2	67.4	68.0	70.4	73.2	75.3	77.4	78.4	77.1	75.3	72.6	70.1	67.9	67.1
55	77.0	77.3	75.4	72.4	68.0	62.7	58.8	59.6	62.3	65.1	67.4	68.8	70.0	68.8	67.3	64.9	62.1	59.5	58.6
60	69.3	68.8	66.9	63.6	59.3	53.7	49.3	50.4	53.5	56.4	58.3	59.7	60.7	59.8	58.3	56.4	53.4	50.4	49.2
65	59.6	59.7	57.8	54.3	49.6	44.0	39.1	40.6	44.0	46.5	48.3	50.1	51.0	50.1	48.4	46.6	44.1	40.7	39.2
70	51.1	50.3	48.1	43.9	39.3	33.7	28.5	30.6	33.7	36.1	38.8	40.4	41.1	40.4	38.9	36.4	34.2	30.6	28.9
75	44.9	44.0	40.5	35.0	28.5	23.5	18.5	21.0	23.6	27.4	31.0	33.7	34.5	33.4	31.0	27.5	24.4	21.0	18.9
80	41.1	40.0	35.9	29.3	20.3	14.2	9.87	12.4	16.1	22.4	28.3	31.9	32.9	31.7	28.0	22.3	16.6	12.4	10.1
85	35.8	34.8	30.9	24.8	16.2	7.72	3.84	6.28	12.8	21.9	28.3	32.0	33.3	32.0	28.3	21.7	12.9	6.50	3.89
90	29.3	28.5	24.7	19.0	11.4	4.56	1.07	4.20	11.1	17.3	22.2	25.6	27.0	25.6	22.6	17.4	11.1	4.06	0.76
95	25.3	24.4	21.3	16.7	11.0	3.98	0.45	3.02	9.37	15.4	20.3	23.2	24.0	23.0	19.9	15.3	9.32	2.96	0.45
100	23.9	23.2	20.4	15.7	9.14	2.31	0.45	1.51	6.36	12.8	17.5	20.8	21.9	20.6	17.4	12.4	6.31	1.23	0.47
105	19.4	18.7	15.9	11.8	6.26	1.22	0.48	0.94	3.69	7.92	11.9	14.7	15.7	14.4	11.7	7.30	3.13	0.77	0.53
110	14.8	14.2	11.9	8.36	3.82	0.80	0.54	0.75	2.28	5.05	7.72	9.65	10.1	9.20	7.22	4.30	1.85	0.67	0.59
115	11.1	10.5	8.54	5.55	2.41	0.68	0.61	0.72	1.54	3.20	5.04	6.39	6.61	5.94	4.54	2.68	1.24	0.69	0.66
120	8.48	7.87	5.87	3.72	1.58	0.70	0.68	0.75	1.18	2.21	3.32	4.30	4.43	3.92	2.97	1.86	1.01	0.75	0.73
125	6.08	5.59	4.22	2.63	1.21	0.76	0.75	0.80	0.99	1.63	2.40	2.98	3.04	2.72	2.15	1.42	0.92	0.81	0.79
130	4.56	4.20	3.11	1.76	0.97	0.82	0.81	0.85	0.93	1.31	1.81	2.25	2.28	2.08	1.66	1.22	0.93	0.87	0.86
135	3.45	2.88	2.16	1.29	0.89	0.88	0.88	0.91	0.94	1.11	1.46	1.71	1.78	1.63	1.38	1.09	0.97	0.93	0.92
140	2.41	2.16	1.48	1.01	0.94	0.95	0.95	0.97	0.98	1.05	1.23	1.41	1.47	1.39	1.20	1.06	1.02	0.99	0.99
145	1.77	1.64	1.13	1.02	1.00	1.01	1.01	1.03	1.04	1.07	1.13	1.19	1.25	1.20	1.13	1.08	1.07	1.05	1.05
150	1.38	1.26	1.08	1.08	1.06	1.07	1.07	1.09	1.09	1.12	1.13	1.16	1.19	1.17	1.15	1.13	1.12	1.11	1.10
155	1.13	1.14	1.13	1.13	1.12	1.13	1.13	1.15	1.15	1.17	1.17	1.19	1.21	1.19	1.19	1.17	1.17	1.16	1.16
160	1.17	1.19	1.18	1.18	1.17	1.19	1.18	1.20	1.20	1.22	1.21	1.23	1.25	1.22	1.23	1.22	1.22	1.20	1.21
165	1.23	1.24	1.22	1.23	1.22	1.24	1.23	1.25	1.24	1.26	1.25	1.27	1.29	1.26	1.27	1.25	1.26	1.25	1.26
170	1.27	1.29	1.27	1.28	1.27	1.29	1.28	1.29	1.28	1.30	1.29	1.30	1.32	1.29	1.30	1.29	1.30	1.29	1.30
175	1.31	1.32	1.31	1.32	1.31	1.32	1.31	1.33	1.32	1.33	1.32	1.33	1.34	1.32	1.33	1.31	1.33	1.32	1.33
180	1.35	1.34	1.33	1.33	1.33	1.33	1.34	1.34	1.34	1.34	1.33	1.34	1.35	1.33	1.33	1.33	1.33	1.34	1.34

C Range: 0 - 360DEG
 C Interval: 15.0DEG
 Test Speed: HIGH
 Temperature: 25.3°C
 Operators: DAMIN
 Test Date: 2024-07-02

γ Range: 0 - 180DEG
 γ Interval: 1.0DEG
 Test System: EVERFINE GO-2000B_V1 SYSTEM V2.00.471
 Humidity: 65.0%
 Test Distance: 4.880m [K=1.0000]
 Remarks:

LUMINOUS DISTRIBUTION INTENSITY DATA

NAME: LED Strip	TYPE: Indoor lighting	WEIGHT: 75g
SPEC.: COB LED	DIM.: 500*10*1.9MM	SERIAL No.: 20240627007
MFR.: EVERFINE	SUR.: 500*10MM	Shielding Angle:

Table--2

UNIT: cd

C (DEG) \ γ (DEG)	285	300	315	330	345														
0	108	108	108	109	110														
5	107	108	108	109	110														
10	106	107	108	109	110														
15	104	106	107	108	109														
20	102	103	105	107	108														
25	98.6	101	102	104	106														
30	94.5	97.2	99.3	102	103														
35	89.7	92.8	95.5	98.3	100														
40	84.0	87.8	91.2	94.4	96.7														
45	77.5	82.1	85.9	89.6	91.7														
50	70.3	75.5	79.3	83.0	84.8														
55	62.1	67.5	71.9	75.6	77.2														
60	53.4	59.1	63.5	67.1	69.0														
65	43.8	49.6	54.4	58.0	60.0														
70	33.6	39.5	44.0	48.4	50.7														
75	23.4	28.9	34.7	40.4	44.2														
80	13.9	20.1	28.8	35.7	40.0														
85	7.19	15.8	24.2	30.9	34.7														
90	4.08	11.3	18.7	24.9	28.5														
95	3.50	8.58	12.8	20.6	24.1														
100	2.30	8.87	15.1	19.2	23.0														
105	1.42	6.45	11.6	16.0	17.1														
110	1.01	3.87	8.51	12.0	14.2														
115	0.82	2.55	5.86	8.78	10.6														
120	0.75	1.89	4.01	6.34	7.98														
125	0.79	1.40	2.52	4.54	5.71														
130	0.85	1.16	1.72	3.46	4.27														
135	0.91	0.98	1.60	2.50	3.21														
140	0.97	0.98	1.33	1.82	2.24														
145	1.03	1.03	1.09	1.47	1.70														
150	1.09	1.09	1.08	1.10	1.33														
155	1.14	1.15	1.14	1.15	1.15														
160	1.19	1.20	1.19	1.20	1.19														
165	1.24	1.25	1.23	1.25	1.24														
170	1.28	1.29	1.28	1.29	1.28														
175	1.32	1.33	1.31	1.32	1.31														
180	1.34	1.35	1.34	1.34	1.34														

C Range: 0 - 360DEG
 C Interval: 15.0DEG
 Test Speed: HIGH
 Temperature:25.3°C
 Operators:DAMIN
 Test Date:2024-07-02

γ Range: 0 - 180DEG
 γ Interval: 1.0DEG
 Test System:EVERFINE GO-2000B_V1 SYSTEM V2.00.471
 Humidity:65.0%
 Test Distance:4.880m [K=1.0000]
 Remarks: