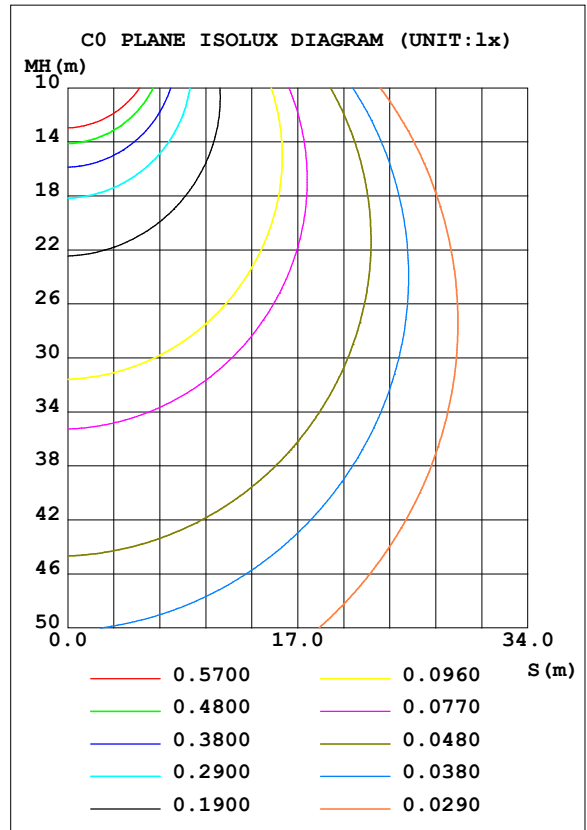
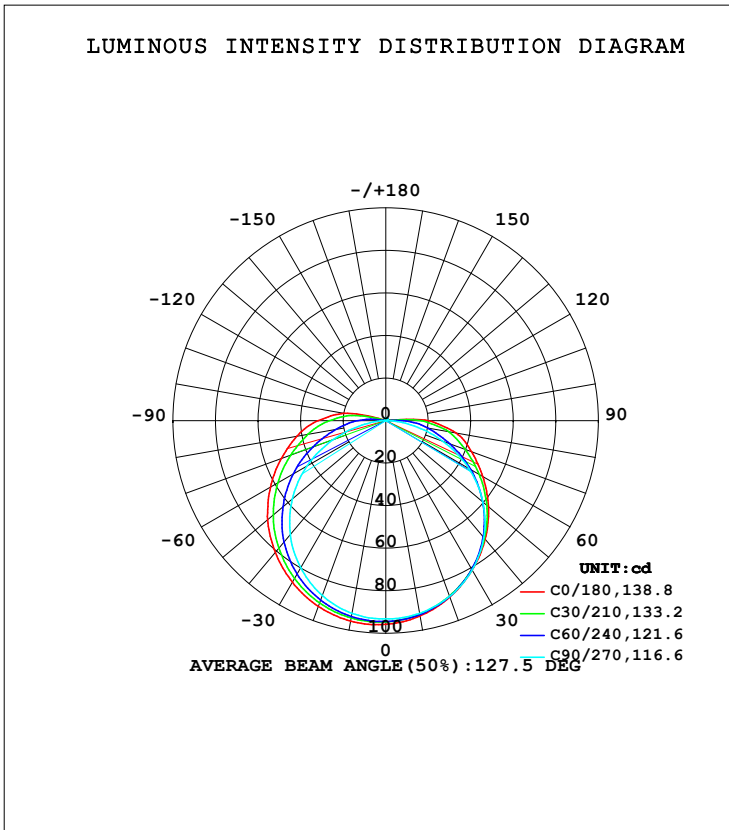


**LUMINAIRE PHOTOMETRIC TEST REPORT**

NAME: LED Strip	TYPE: Indoor lighting	WEIGHT: 20g
SPEC.: COB LED	DIM.: 500*8*1.9mm	SERIAL No.: 20220711007
MFR.: EVERFINE	SUR.: 500*8*1.9mm	Shielding Angle:

DATA OF LAMP		PHOTOMETRIC DATA			
2T89NW320B-20 (KIP) -UR-EP-LD-RTR 4000K		Imax (cd)	96.04	S/MH (C0/180)	1.37
NOMINAL POWER (W)	3.83467	LOR (%)	100.0	S/MH (C90/270)	1.28
RATED VOLTAGE (V)	DC 24V	TOTAL FLUX (lm)	342.79	<input type="checkbox"/> UP, DN (C0-180)	2.2, 48.0
NOMINAL FLUX (lm)	342.792	CIE CLASS	DIRECT	<input type="checkbox"/> UP, DN (C180-360)	2.6, 47.3
LAMPS INSIDE	1	<input type="checkbox"/> up (%)	4.7	CIBSE SHR NOM	1.50
TEST VOLTAGE (V)	DC 24V	<input type="checkbox"/> down (%)	95.3	CIBSE SHR MAX	1.50



C Range: 0 - 360DEG  
 C Interval: 15.0DEG  
 Test Speed: HIGH  
 Temperature: 25.3DEG  
 Operators: DAMIN  
 Test Date: 2022-07-11

Range: 0 - 180DEG  
 Interval: 1.0DEG  
 Test System: EVERFINE GO-2000A\_V1 SYSTEM V2.00.444  
 Humidity: 65.0%  
 Test Distance: 4.880m [K=1.0000]  
 Remarks:

**ZONAL FLUX DIAGRAM**

ZONAL FLUX DIAGRAM:

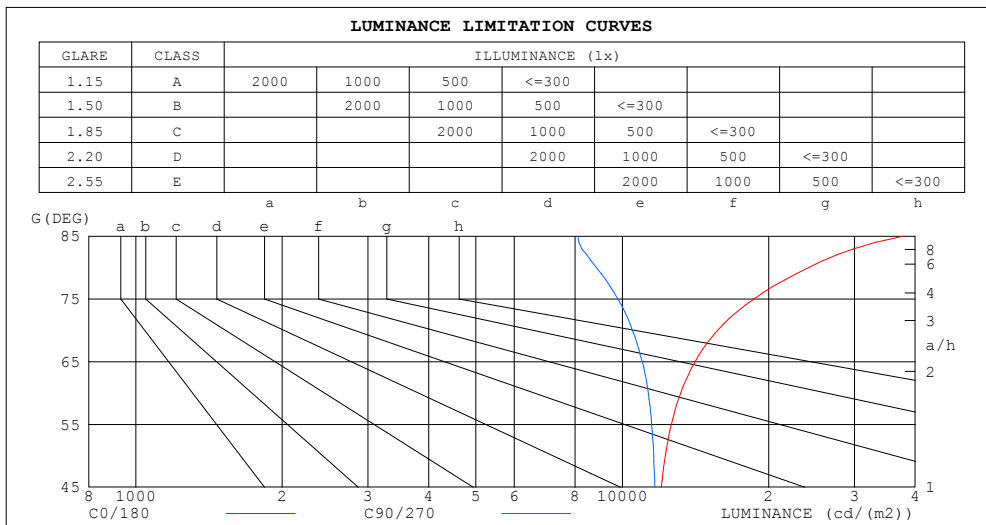
mm	C0	C45	C90	C135	C180	C225	C270	C315	mm	□ zone	□ total	%lum,lamp
10	93.21	92.37	91.95	93.33	95.64	93.66	91.93	91.85	0- 10	8.938	8.938	2.61,2.61
20	88.21	87.71	87.90	90.10	92.88	90.31	87.43	86.63	10- 20	25.77	34.71	10.1,10.1
30	81.17	80.68	81.14	84.39	87.80	84.45	79.98	79.09	20- 30	39.61	74.32	21.7,21.7
40	72.74	71.54	71.70	76.33	80.84	76.29	69.89	69.57	30- 40	48.93	123.3	36,36
50	63.06	60.52	59.67	66.20	72.51	66.27	57.33	58.78	40- 50	52.78	176.0	51.4,51.4
60	52.71	48.35	45.25	54.83	62.66	54.84	42.75	46.39	50- 60	50.70	226.7	66.1,66.1
70	42.96	36.09	28.71	42.83	52.30	42.67	26.31	33.82	60- 70	43.61	270.3	78.9,78.9
80	33.54	25.59	12.31	31.47	42.46	31.10	10.09	18.84	70- 80	33.71	304.1	88.7,88.7
90	20.11	13.18	1.423	20.94	31.83	20.36	0.8047	13.63	80- 90	22.58	326.6	95.3,95.3
100	1.628	0.9830	0.3960	7.685	19.92	7.479	0.4055	1.009	90-100	10.35	337.0	98.3,98.3
110	0.6362	0.5730	0.4708	0.8455	1.421	0.6810	0.5098	0.6479	100-110	2.402	339.4	99,99
120	0.7181	0.6808	0.5892	0.6174	0.7176	0.6233	0.6293	0.7591	110-120	0.6916	340.1	99.2,99.2
130	0.8013	0.7804	0.6946	0.6925	0.7511	0.7181	0.7383	0.8657	120-130	0.6574	340.7	99.4,99.4
140	0.8774	0.8706	0.7978	0.7898	0.8319	0.8118	0.8437	0.9582	130-140	0.6320	341.4	99.6,99.6
150	0.9513	0.9538	0.9009	0.8917	0.9139	0.9032	0.9409	1.045	140-150	0.5661	341.9	99.7,99.7
160	1.027	1.030	0.9899	0.9877	1.002	0.9888	1.025	1.128	150-160	0.4549	342.4	99.9,99.9
170	1.093	1.095	1.077	1.091	1.086	1.067	1.096	1.132	160-170	0.2998	342.7	100,100
180	1.132	1.120	1.133	1.146	1.131	1.119	1.134	1.152	170-180	0.1063	342.8	100,100
DEG	LUMINOUS INTENSITY:cd									UNIT:lm		

C Range: 0 - 360DEG  
 C Interval: 15.0DEG  
 Test Speed: HIGH  
 Temperature:25.3DEG  
 Operators:DAMIN  
 Test Date:2022-07-11

□ Range: 0 - 180DEG  
 □ Interval: 1.0DEG  
 Test System:EVERFINE GO-2000A\_V1 SYSTEM V2.00.444  
 Humidity:65.0%  
 Test Distance:4.880m [K=1.0000]  
 Remarks:

**LUMINANCE LIMITATION CURVES**

NAME: LED Strip	TYPE: Indoor lighting	WEIGHT: 20g
SPEC.: COB LED	DIM.: 500*8*1.9mm	SERIAL No.: 20220711007
MFR.: EVERFINE	SUR.: 500*8*1.9mm	Shielding Angle:



LUMINANCE cd/(m2)		
G (DEG)	C0/180	C90/270
85	37714	8108
80	24145	8858
75	18649	9803
70	15702	10494
65	14112	10985
60	13178	11313
55	12615	11495
50	12262	11604
45	12027	11666

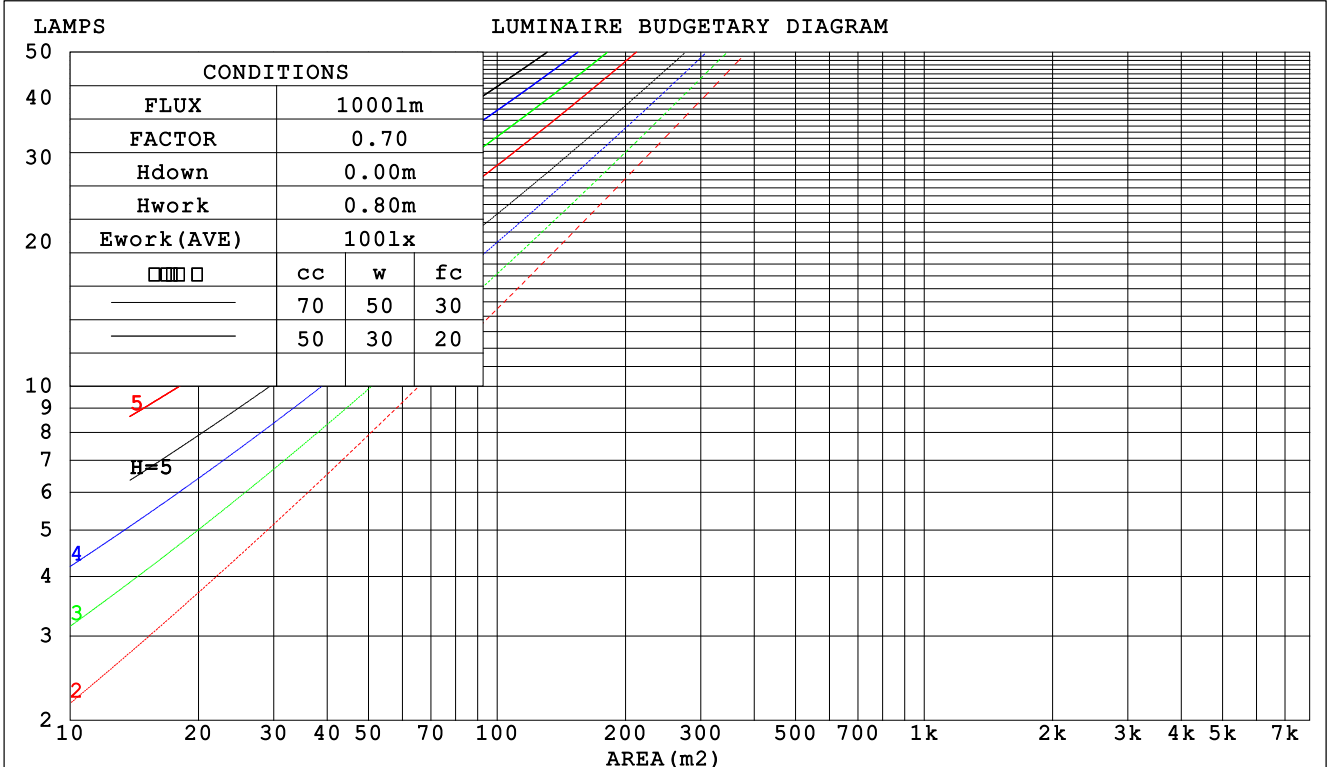
C Range: 0 - 360DEG  
 C Interval: 15.0DEG  
 Test Speed: HIGH  
 Temperature: 25.3DEG  
 Operators: DAMIN  
 Test Date: 2022-07-11

Range: 0 - 180DEG  
 Interval: 1.0DEG  
 Test System: EVERFINE GO-2000A\_V1 SYSTEM V2.00.444  
 Humidity: 65.0%  
 Test Distance: 4.880m [K=1.0000]  
 Remarks:

**CU AND LUMINAIRE BUDGETARY ESTIMATE DIAGRAM**

NAME: LED Strip	TYPE: Indoor lighting	WEIGHT: 20g
SPEC.: COB LED	DIM.: 500*8*1.9mm	SERIAL No.: 20220711007
MFR.: EVERFINE	SUR.: 500*8*1.9mm	Shielding Angle:

□cc	80%			70%			50%			30%			10%			0
□w	50%	30%	10%	50%	30%	10%	50%	30%	10%	50%	30%	10%	50%	30%	10%	0
□fc	20%			20%			20%			20%			20%			0
RCR	RCR:Room Cavity Ratio						Coefficients of Utilization(CU)									
0.0	1.18	1.18	1.18	1.15	1.15	1.15	1.08	1.08	1.08	1.03	1.03	1.03	.98	.98	.98	.95
1.0	.99	.94	.89	.96	.92	.87	.91	.87	.84	.86	.83	.80	.82	.79	.77	.74
2.0	.85	.77	.71	.83	.76	.70	.78	.72	.67	.74	.69	.65	.71	.66	.63	.60
3.0	.74	.65	.58	.72	.64	.57	.68	.61	.55	.65	.59	.54	.62	.57	.52	.50
4.0	.65	.56	.48	.63	.55	.48	.60	.53	.47	.57	.51	.45	.55	.49	.44	.42
5.0	.58	.48	.41	.56	.47	.41	.54	.46	.40	.51	.44	.39	.49	.43	.38	.36
6.0	.52	.42	.36	.51	.42	.35	.48	.41	.35	.46	.39	.34	.44	.38	.33	.31
7.0	.47	.38	.31	.46	.37	.31	.44	.36	.30	.42	.35	.30	.40	.34	.29	.27
8.0	.43	.34	.28	.42	.33	.28	.40	.32	.27	.38	.32	.27	.37	.31	.26	.24
9.0	.39	.31	.25	.38	.30	.25	.37	.29	.24	.35	.29	.24	.34	.28	.24	.22
10.0	.36	.28	.22	.35	.28	.22	.34	.27	.22	.33	.26	.22	.32	.26	.21	.19



C Range: 0 - 360DEG  
 C Interval: 15.0DEG  
 Test Speed: HIGH  
 Temperature: 25.3DEG  
 Operators: DAMIN  
 Test Date: 2022-07-11

□ Range: 0 - 180DEG  
 □ Interval: 1.0DEG  
 Test System: EVERFINE GO-2000A\_V1 SYSTEM V2.00.444  
 Humidity: 65.0%  
 Test Distance: 4.880m [K=1.0000]  
 Remarks:

WEC AND CCEC

NAME: LED Strip	TYPE: Indoor lighting	WEIGHT: 20g
SPEC.: COB LED	DIM.: 500*8*1.9mm	SERIAL No.: 20220711007
MFR.: EVERFINE	SUR.: 500*8*1.9mm	Shielding Angle:

<input type="checkbox"/> cc	80%	70%	50%	30%	10%	0
<input type="checkbox"/> w	50% 30% 10%	50% 30% 10%	50% 30% 10%	50% 30% 10%	50% 30% 10%	0
<input type="checkbox"/> fc	20%	20%	20%	20%	20%	0
RCR	RCR:Room Cavity Ratio		Wall Exitance Coefficients (WEC)			
0.0						
1.0	.377 .214 .068	.368 .210 .067	.352 .202 .064	.337 .194 .062	.323 .187 .060	
2.0	.331 .182 .056	.324 .178 .055	.309 .172 .053	.296 .166 .052	.283 .160 .051	
3.0	.297 .158 .047	.290 .155 .047	.277 .150 .046	.265 .145 .045	.254 .140 .043	
4.0	.268 .139 .041	.262 .137 .041	.250 .133 .040	.240 .129 .039	.230 .125 .038	
5.0	.244 .125 .036	.239 .123 .036	.229 .119 .035	.219 .116 .034	.210 .112 .034	
6.0	.224 .113 .032	.220 .111 .032	.210 .108 .031	.201 .105 .031	.193 .102 .030	
7.0	.207 .102 .029	.203 .101 .029	.194 .098 .028	.187 .096 .028	.179 .093 .027	
8.0	.192 .094 .026	.188 .093 .026	.181 .090 .026	.174 .088 .025	.167 .086 .025	
9.0	.179 .087 .024	.176 .086 .024	.169 .084 .024	.162 .081 .023	.156 .079 .023	
10.0	.168 .081 .022	.165 .080 .022	.159 .078 .022	.153 .076 .022	.147 .074 .021	

<input type="checkbox"/> cc	80%	70%	50%	30%	10%	0
<input type="checkbox"/> w	50% 30% 10%	50% 30% 10%	50% 30% 10%	50% 30% 10%	50% 30% 10%	0
<input type="checkbox"/> fc	20%	20%	20%	20%	20%	0
RCR	RCR:Room Cavity Ratio		Ceiling Cavity Exitance Coefficients (CCEC)			
0.0	.226 .226 .226	.193 .193 .193	.132 .132 .132	.076 .076 .076	.024 .024 .024	
1.0	.221 .192 .165	.189 .165 .142	.129 .113 .098	.074 .066 .057	.024 .021 .019	
2.0	.214 .168 .130	.183 .145 .112	.126 .100 .078	.072 .058 .046	.023 .019 .015	
3.0	.206 .151 .107	.177 .130 .093	.121 .091 .065	.070 .053 .038	.023 .017 .013	
4.0	.198 .138 .092	.170 .119 .080	.117 .083 .056	.068 .049 .033	.022 .016 .011	
5.0	.191 .128 .082	.164 .111 .071	.113 .077 .050	.065 .045 .030	.021 .015 .010	
6.0	.183 .120 .075	.157 .104 .065	.108 .073 .046	.063 .043 .027	.020 .014 .009	
7.0	.176 .113 .069	.151 .098 .060	.104 .069 .043	.061 .040 .025	.020 .013 .008	
8.0	.169 .107 .065	.145 .093 .057	.101 .065 .040	.059 .039 .024	.019 .013 .008	
9.0	.163 .102 .062	.140 .089 .054	.097 .063 .038	.057 .037 .023	.018 .012 .008	
10.0	.157 .098 .059	.135 .085 .052	.094 .060 .037	.055 .035 .022	.018 .012 .007	

C Range: 0 - 360DEG  
 C Interval: 15.0DEG  
 Test Speed: HIGH  
 Temperature: 25.3DEG  
 Operators: DAMIN  
 Test Date: 2022-07-11

Range: 0 - 180DEG  
 Interval: 1.0DEG  
 Test System: EVERFINE GO-2000A\_V1 SYSTEM V2.00.444  
 Humidity: 65.0%  
 Test Distance: 4.880m [K=1.0000]  
 Remarks:

**UGR(Unified Glare Rating) Table**

NAME: LED Strip	TYPE: Indoor lighting	WEIGHT: 20g
SPEC.: COB LED	DIM.: 500*8*1.9mm	SERIAL No.: 20220711007
MFR.: EVERFINE	SUR.: 500*8*1.9mm	Shielding Angle:

ceiling/cavity	0.7	0.7	0.5	0.5	0.3	0.7	0.7	0.5	0.5	0.3
walls	0.5	0.3	0.5	0.3	0.3	0.5	0.3	0.5	0.3	0.3
working plane	0.2	0.2	0.2	0.2	0.2	0.2	0.2	0.2	0.2	0.2
Room dimensions	Viewed crosswise					Viewed endwise				
x = 2H y = 2H	25.1	26.7	25.5	27.0	27.3	24.4	26.0	24.8	26.3	26.6
3H	27.5	28.9	27.8	29.2	29.6	26.0	27.5	26.4	27.8	28.1
4H	28.7	30.1	29.1	30.5	30.8	26.7	28.1	27.1	28.4	28.8
6H	30.1	31.4	30.5	31.8	32.2	27.2	28.5	27.6	28.8	29.2
8H	30.8	32.1	31.3	32.5	32.9	27.3	28.6	27.7	29.0	29.4
12H	31.6	32.8	32.0	33.2	33.6	27.4	28.7	27.9	29.0	29.5
4H 2H	25.8	27.1	26.1	27.5	27.8	25.2	26.6	25.6	26.9	27.3
3H	28.3	29.5	28.7	29.9	30.3	27.0	28.3	27.5	28.6	29.1
4H	29.8	30.9	30.2	31.3	31.8	27.9	29.0	28.3	29.4	29.8
6H	31.4	32.4	31.9	32.8	33.3	28.5	29.5	29.0	29.9	30.4
8H	32.2	33.2	32.7	33.6	34.1	28.7	29.7	29.2	30.1	30.6
12H	33.1	34.0	33.6	34.4	35.0	28.9	29.8	29.4	30.3	30.8
8H 4H	30.1	31.1	30.6	31.5	32.0	28.5	29.5	29.0	29.9	30.4
6H	32.1	32.8	32.6	33.3	33.9	29.5	30.3	30.0	30.8	31.3
8H	33.1	33.8	33.6	34.3	34.9	29.9	30.6	30.4	31.1	31.7
12H	34.2	34.8	34.7	35.3	35.9	30.2	30.8	30.8	31.4	31.9
12H 4H	30.2	31.1	30.7	31.5	32.0	28.7	29.6	29.2	30.1	30.6
6H	32.2	32.9	32.7	33.4	34.0	29.8	30.6	30.4	31.1	31.6
8H	33.3	33.9	33.8	34.5	35.0	30.4	31.0	30.9	31.5	32.1
Variations with the observer position at spacings(CIE Pub.117):										
S = 1.0H	+ 0.1 / - 0.1					+ 0.1 / - 0.1				
1.5H	+ 0.2 / - 0.3					+ 0.2 / - 0.3				
2.0H	+ 0.2 / - 0.3					+ 0.1 / - 0.3				

CIE Pub.117, 342.8 lm Total Lamp Luminous Flux Correct (8log(F/F0) = -3.7)  
 Area: 0.008 m2

C Range: 0 - 360DEG  
 C Interval: 15.0DEG  
 Test Speed: HIGH  
 Temperature:25.3DEG  
 Operators:DAMIN  
 Test Date:2022-07-11

Range: 0 - 180DEG  
 Interval: 1.0DEG  
 Test System:EVERFINE GO-2000A\_V1 SYSTEM V2.00.444  
 Humidity:65.0%  
 Test Distance:4.880m [K=1.0000]  
 Remarks:

**UTILIZATION FACTORS TABLE**

NAME: LED Strip	TYPE: Indoor lighting	WEIGHT: 20g
SPEC.: COB LED	DIM.: 500*8*1.9mm	SERIAL No.: 20220711007
MFR.: EVERFINE	SUR.: 500*8*1.9mm	Shielding Angle:

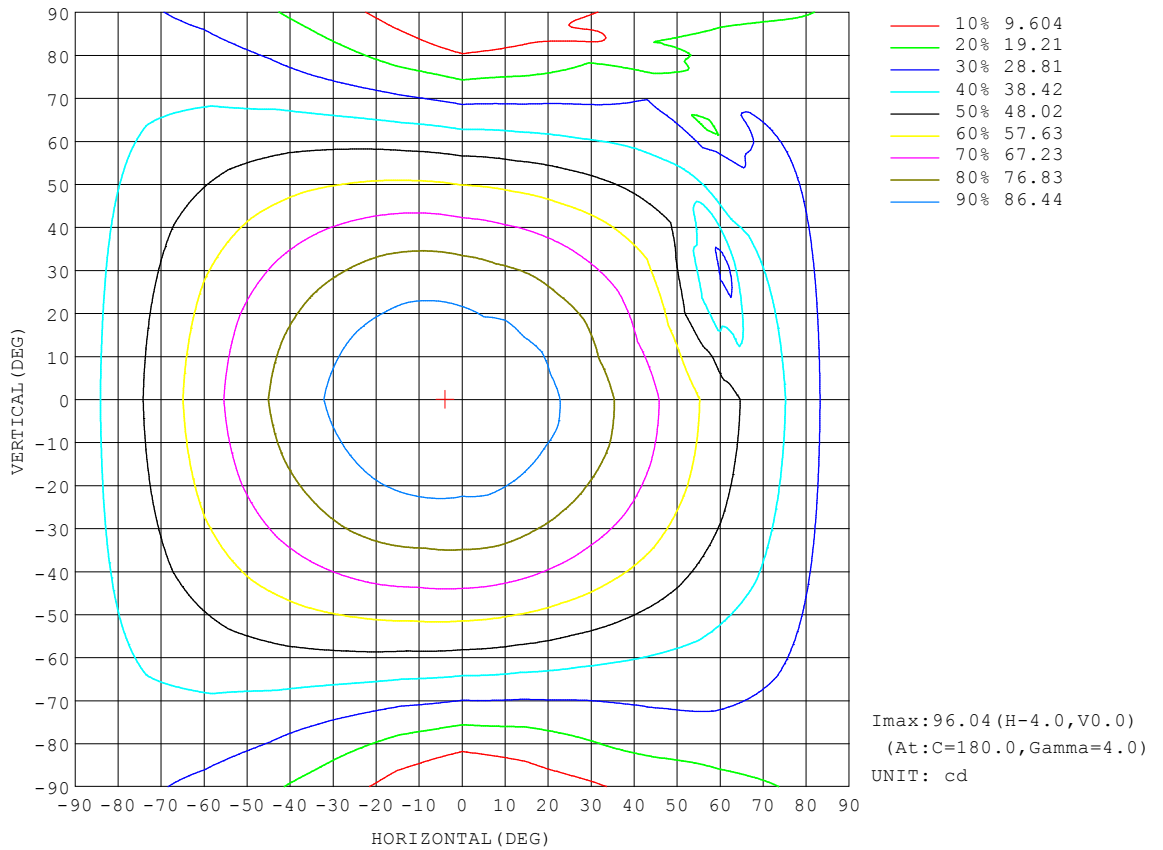
REFLECTANCE										
Ceiling	0.8	0.8	0.8	0.7	0.7	0.7	0.5	0.5	0.5	0
Walls	0.7	0.5	0.3	0.7	0.5	0.3	0.7	0.5	0.3	0
Working plane	0.2	0.2	0.2	0.2	0.2	0.2	0.2	0.2	0.2	0
ROOM INDEX	UTILIZATION FACTORS (PERCENT) $k(RI) \times RCR = 5$									
k = 0.60	53	40	33	52	40	33	50	39	33	26
0.80	62	49	42	61	49	41	59	48	41	33
1.00	70	58	50	69	57	49	66	58	49	41
1.25	77	65	57	75	64	57	72	63	56	47
1.50	82	71	63	80	70	62	77	67	61	52
2.00	89	79	71	87	78	70	83	75	69	59
2.50	93	84	77	91	82	76	87	79	74	64
3.00	97	89	82	95	87	80	90	83	78	68
4.00	102	94	88	99	92	87	94	88	84	73
5.00	104	98	93	101	96	91	96	92	87	76
ROOM INDEX	UF(total)									Direct
According to DIN EN 13032-2 2004			Suspended				SHRNOM = 1.25			

C Range: 0 - 360DEG  
 C Interval: 15.0DEG  
 Test Speed: HIGH  
 Temperature: 25.3DEG  
 Operators: DAMIN  
 Test Date: 2022-07-11

Range: 0 - 180DEG  
 Interval: 1.0DEG  
 Test System: EVERFINE GO-2000A\_V1 SYSTEM V2.00.444  
 Humidity: 65.0%  
 Test Distance: 4.880m [K=1.0000]  
 Remarks:

**ISOCANDELA DIAGRAM**

NAME: LED Strip	TYPE: Indoor lighting	WEIGHT: 20g
SPEC.: COB LED	DIM.: 500*8*1.9mm	SERIAL No.: 20220711007
MFR.: EVERFINE	SUR.: 500*8*1.9mm	Shielding Angle:



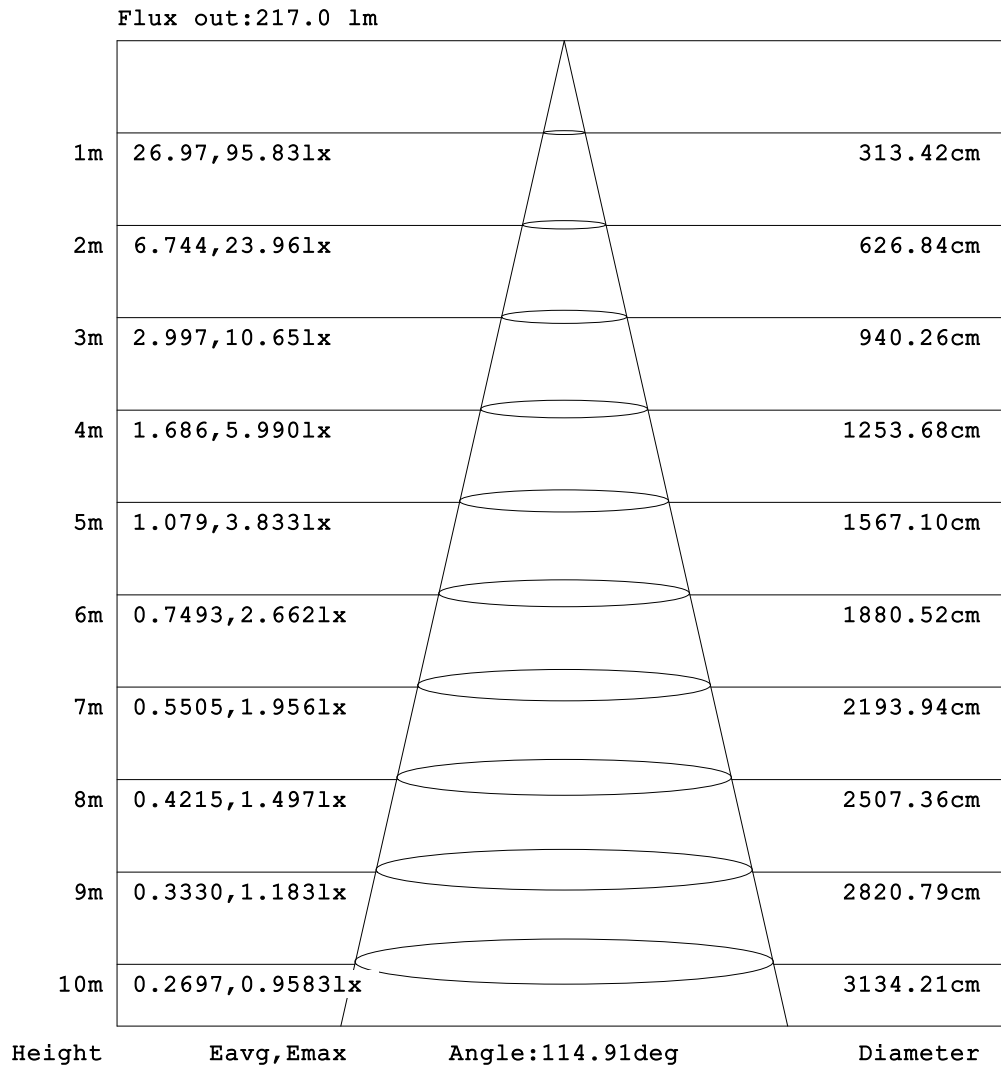
C Range: 0 - 360DEG  
 C Interval: 15.0DEG  
 Test Speed: HIGH  
 Temperature: 25.3DEG  
 Operators: DAMIN  
 Test Date: 2022-07-11

Range: 0 - 180DEG  
 Interval: 1.0DEG  
 Test System: EVERFINE GO-2000A\_V1 SYSTEM V2.00.444  
 Humidity: 65.0%  
 Test Distance: 4.880m [K=1.0000]  
 Remarks:



**AAI Figure**

NAME: LED Strip	TYPE: Indoor lighting	WEIGHT: 20g
SPEC.: COB LED	DIM.: 500*8*1.9mm	SERIAL No.: 20220711007
MFR.: EVERFINE	SUR.: 500*8*1.9mm	Shielding Angle:



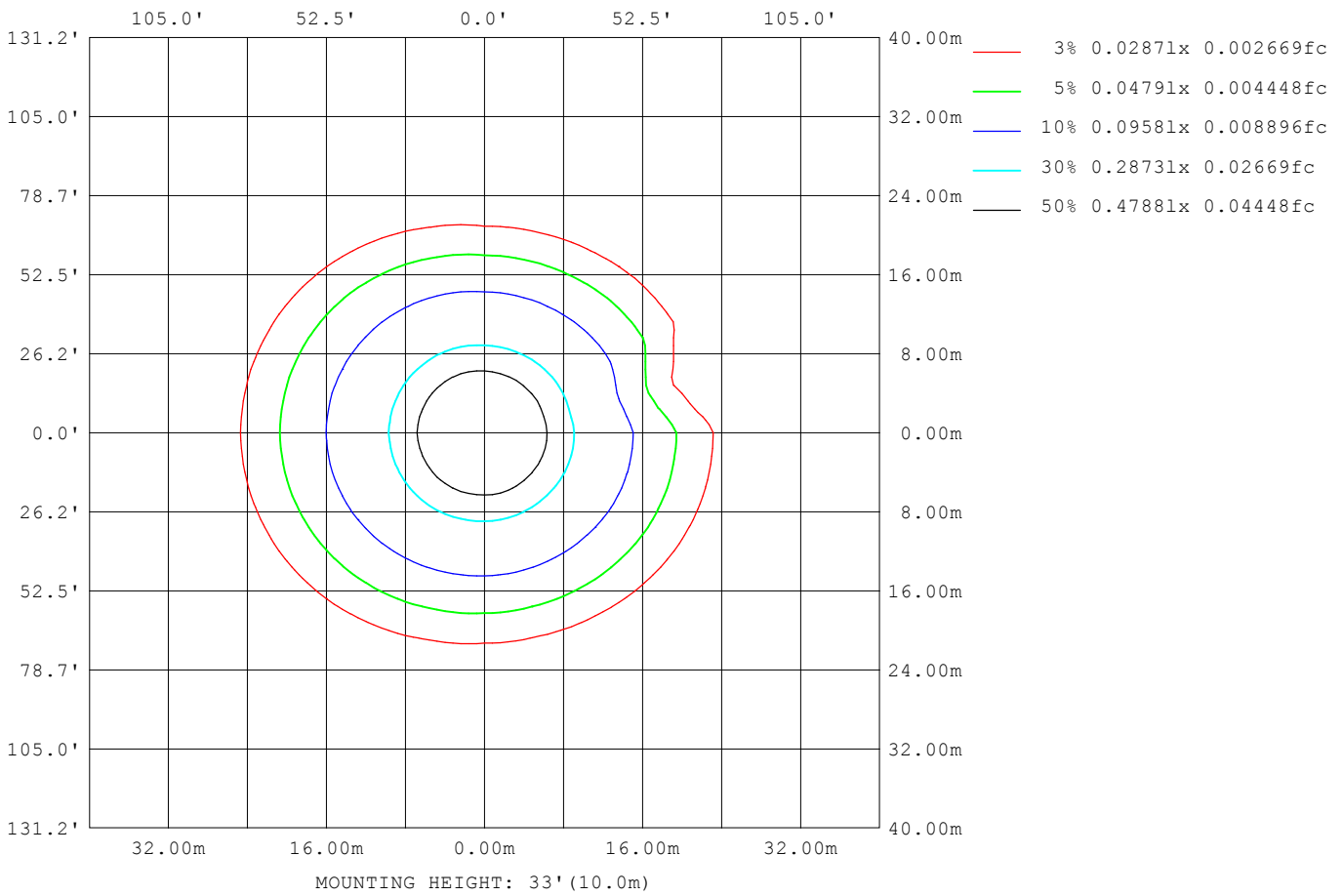
Note: The Curves indicate the illuminated area and the average illumination when the luminaire is at different distance.

C Range: 0 - 360DEG  
 C Interval: 15.0DEG  
 Test Speed: HIGH  
 Temperature: 25.3DEG  
 Operators: DAMIN  
 Test Date: 2022-07-11

Range: 0 - 180DEG  
 Interval: 1.0DEG  
 Test System: EVERFINE GO-2000A\_V1 SYSTEM V2.00.444  
 Humidity: 65.0%  
 Test Distance: 4.880m [K=1.0000]  
 Remarks:

**ISOLUX DIAGRAM**

NAME: LED Strip	TYPE: Indoor lighting	WEIGHT: 20g
SPEC.: COB LED	DIM.: 500*8*1.9mm	SERIAL No.: 20220711007
MFR.: EVERFINE	SUR.: 500*8*1.9mm	Shielding Angle:



C Range: 0 - 360DEG  
 C Interval: 15.0DEG  
 Test Speed: HIGH  
 Temperature: 25.3DEG  
 Operators: DAMIN  
 Test Date: 2022-07-11

Range: 0 - 180DEG  
 Interval: 1.0DEG  
 Test System: EVERFINE GO-2000A\_V1 SYSTEM V2.00.444  
 Humidity: 65.0%  
 Test Distance: 4.880m [K=1.0000]  
 Remarks:

**LED Avg.L Report**

NAME: LED Strip	TYPE: Indoor lighting	WEIGHT: 20g
SPEC.: COB LED	DIM.: 500*8*1.9mm	SERIAL No.: 20220711007
MFR.: EVERFINE	SUR.: 500*8*1.9mm	Shielding Angle:

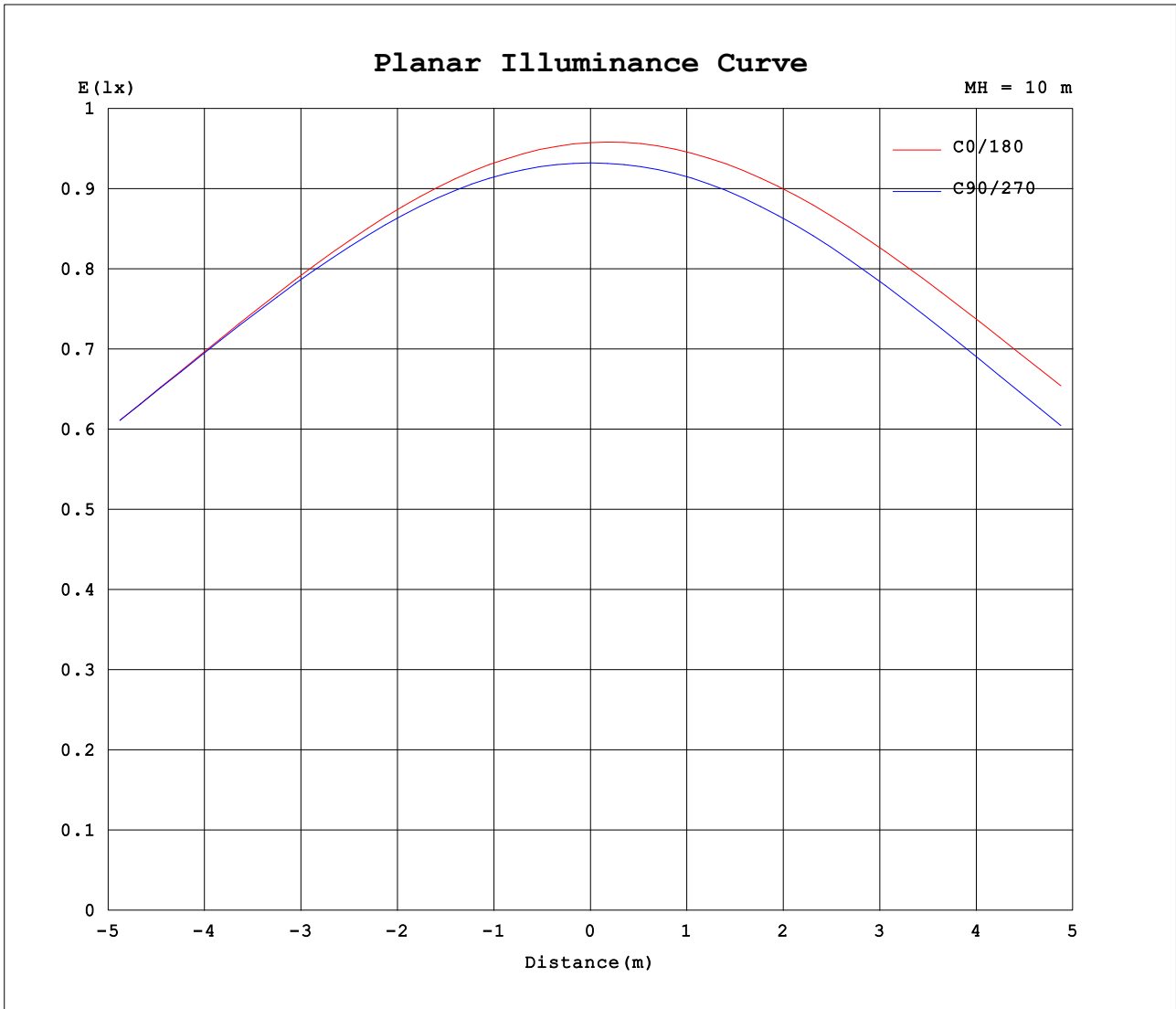
AvgL	cd/m2
L_0~180 (65) av	15562
L_0~180 (75) av	20723
L_0~180 (85) av	45739
L_90~270 (65) av	10624
L_90~270 (75) av	9239
L_90~270 (85) av	6812
L_45 (65) av	13298
L_45 (75) av	16109
L_45 (85) av	32715

Standard: GB/T 29293-2012

C Range: 0 - 360DEG  
 C Interval: 15.0DEG  
 Test Speed: HIGH  
 Temperature:25.3DEG  
 Operators:DAMIN  
 Test Date:2022-07-11

Range: 0 - 180DEG  
 Interval: 1.0DEG  
 Test System:EVERFINE GO-2000A\_V1 SYSTEM V2.00.444  
 Humidity:65.0%  
 Test Distance:4.880m [K=1.0000]  
 Remarks:

**Planar Illuminance Curve**



C Range: 0 - 360DEG  
 C Interval: 15.0DEG  
 Test Speed: HIGH  
 Temperature: 25.3DEG  
 Operators: DAMIN  
 Test Date: 2022-07-11

Range: 0 - 180DEG  
 Interval: 1.0DEG  
 Test System: EVERFINE GO-2000A\_V1 SYSTEM V2.00.444  
 Humidity: 65.0%  
 Test Distance: 4.880m [K=1.0000]  
 Remarks:

LUMINOUS DISTRIBUTION INTENSITY DATA

NAME: LED Strip	TYPE: Indoor lighting	WEIGHT: 20g
SPEC.: COB LED	DIM.: 500*8*1.9mm	SERIAL No.: 20220711007
MFR.: EVERFINE	SUR.: 500*8*1.9mm	Shielding Angle:

Table--1

UNIT: cd

C (DEG) □ (DEG)	0	15	30	45	60	75	90	105	120	135	150	165	180	195	210	225	240	255	270
0	95.8	95.3	94.6	94.4	94.4	94.1	93.2	93.0	93.9	94.0	94.3	94.8	95.8	95.3	94.6	94.4	94.4	94.1	93.2
5	94.8	94.5	93.8	93.7	93.8	93.7	92.9	93.0	93.7	94.0	94.4	95.0	96.0	95.4	94.7	94.3	94.3	93.8	93.0
10	93.2	93.1	92.4	92.4	92.5	92.6	92.0	92.3	93.0	93.3	93.8	94.5	95.6	94.9	94.2	93.7	93.5	92.8	91.9
15	91.0	91.0	90.3	90.4	90.6	90.8	90.3	90.8	91.5	92.0	92.6	93.3	94.6	93.7	93.0	92.3	92.0	91.0	90.1
20	88.2	88.4	87.7	87.7	88.0	88.3	87.9	88.6	89.3	90.1	90.8	91.6	92.9	91.9	91.1	90.3	89.7	88.6	87.4
25	84.9	85.1	84.5	84.5	84.7	85.1	84.9	85.6	86.5	87.5	88.4	89.3	90.6	89.6	88.7	87.7	86.9	85.5	84.1
30	81.2	81.4	80.8	80.7	80.8	81.2	81.1	81.9	83.1	84.4	85.3	86.5	87.8	86.7	85.7	84.5	83.3	81.7	80.0
35	77.2	77.4	76.7	76.3	76.3	76.8	76.8	77.4	79.0	80.6	81.8	83.1	84.5	83.4	82.2	80.6	79.1	77.3	75.3
40	72.7	73.0	72.2	71.5	71.2	71.6	71.7	72.5	74.4	76.3	77.8	79.5	80.8	79.6	78.2	76.3	74.4	72.1	69.9
45	68.0	68.1	67.3	66.1	65.6	65.6	66.0	66.8	69.2	71.6	73.5	75.5	76.9	75.6	73.9	71.5	68.9	66.4	63.8
50	63.1	63.0	62.0	60.5	59.5	59.3	59.7	60.8	63.5	66.2	68.8	71.2	72.5	71.2	69.0	66.3	63.1	60.1	57.3
55	57.9	57.7	56.5	54.6	53.0	52.4	52.7	54.2	57.3	60.7	63.8	66.2	67.6	66.5	64.0	60.7	56.9	53.2	50.3
60	52.7	52.3	50.8	48.4	46.2	45.0	45.3	47.1	50.8	54.8	58.5	61.2	62.7	61.4	58.6	54.8	50.3	46.0	42.7
65	47.7	47.1	45.1	42.0	39.2	37.2	37.1	39.6	44.0	48.8	53.1	56.0	57.5	56.2	53.1	48.8	43.5	38.5	34.7
70	43.0	42.2	39.8	36.1	32.0	29.4	28.7	31.8	37.1	42.8	47.6	50.9	52.3	51.0	47.6	42.7	36.6	30.8	26.3
75	38.6	37.7	34.8	30.6	25.6	21.6	20.3	24.2	30.5	37.0	42.3	45.9	47.2	45.8	42.2	36.6	29.9	23.3	18.0
80	33.5	32.9	30.0	25.6	19.9	14.5	12.3	17.1	24.4	31.5	37.2	41.1	42.5	41.0	37.1	31.1	23.7	16.1	10.1
85	26.3	25.7	23.0	19.4	14.5	8.99	5.65	11.1	18.8	26.4	32.2	36.2	37.5	35.9	32.1	26.0	18.2	10.7	3.85
90	20.1	19.5	16.8	13.2	8.50	4.20	1.42	6.42	13.8	20.9	26.6	30.6	31.8	30.2	26.5	20.4	13.1	6.12	0.80
95	6.48	6.37	4.45	2.44	1.30	0.63	0.40	1.69	8.91	15.6	21.0	24.8	26.0	24.5	20.8	15.0	8.47	1.82	0.38
100	1.63	1.62	1.36	0.98	0.57	0.45	0.40	0.53	1.72	7.69	14.3	18.7	19.9	18.3	14.4	7.48	1.68	0.74	0.41
105	0.87	0.84	0.71	0.55	0.50	0.46	0.42	0.48	0.80	1.51	3.84	7.32	8.87	7.16	4.25	1.11	0.60	0.64	0.45
110	0.64	0.63	0.59	0.57	0.53	0.51	0.47	0.49	0.56	0.85	1.17	1.71	1.42	1.16	0.90	0.68	0.56	0.59	0.51
115	0.67	0.68	0.64	0.63	0.58	0.56	0.53	0.53	0.53	0.63	0.85	1.09	0.76	0.75	0.69	0.62	0.56	0.59	0.57
120	0.72	0.72	0.69	0.68	0.64	0.62	0.59	0.58	0.57	0.62	0.72	0.90	0.72	0.70	0.67	0.62	0.61	0.63	0.63
125	0.76	0.77	0.74	0.73	0.69	0.67	0.64	0.64	0.62	0.65	0.69	0.76	0.72	0.71	0.70	0.67	0.67	0.68	0.69
130	0.80	0.81	0.79	0.78	0.74	0.72	0.69	0.69	0.67	0.69	0.70	0.73	0.75	0.74	0.74	0.72	0.72	0.73	0.74
135	0.84	0.85	0.83	0.82	0.79	0.78	0.75	0.74	0.73	0.74	0.73	0.74	0.79	0.78	0.79	0.77	0.77	0.78	0.79
140	0.88	0.90	0.87	0.87	0.84	0.83	0.80	0.80	0.78	0.79	0.78	0.78	0.83	0.82	0.83	0.81	0.82	0.83	0.84
145	0.91	0.93	0.91	0.91	0.88	0.88	0.85	0.85	0.83	0.84	0.83	0.81	0.87	0.86	0.87	0.86	0.87	0.88	0.89
150	0.95	0.97	0.95	0.95	0.93	0.92	0.90	0.90	0.89	0.89	0.88	0.86	0.91	0.90	0.91	0.90	0.92	0.92	0.94
155	0.99	1.01	0.99	0.99	0.97	0.97	0.95	0.95	0.93	0.94	0.93	0.92	0.96	0.94	0.96	0.95	0.96	0.97	0.99
160	1.03	1.04	1.03	1.03	1.01	1.01	0.99	0.99	0.98	0.99	0.98	0.99	1.00	0.98	1.00	0.99	1.01	1.01	1.03
165	1.06	1.07	1.06	1.07	1.05	1.06	1.04	1.05	1.02	1.03	1.02	1.05	1.05	1.02	1.04	1.03	1.05	1.05	1.06
170	1.09	1.10	1.09	1.10	1.08	1.09	1.08	1.09	1.08	1.09	1.07	1.10	1.09	1.06	1.08	1.07	1.08	1.08	1.10
175	1.12	1.12	1.11	1.12	1.11	1.12	1.11	1.12	1.11	1.13	1.13	1.14	1.12	1.10	1.11	1.10	1.11	1.11	1.12
180	1.13	1.13	1.12	1.12	1.13	1.13	1.13	1.13	1.13	1.15	1.16	1.21	1.13	1.12	1.12	1.12	1.12	1.13	1.13

C Range: 0 - 360DEG  
 C Interval: 15.0DEG  
 Test Speed: HIGH  
 Temperature:25.3DEG  
 Operators:DAMIN  
 Test Date:2022-07-11

□ Range: 0 - 180DEG  
 □ Interval: 1.0DEG  
 Test System:EVERFINE GO-2000A\_V1 SYSTEM V2.00.444  
 Humidity:65.0%  
 Test Distance:4.880m [K=1.0000]  
 Remarks:

LUMINOUS DISTRIBUTION INTENSITY DATA

NAME: LED Strip	TYPE: Indoor lighting	WEIGHT: 20g
SPEC.: COB LED	DIM.: 500*8*1.9mm	SERIAL No.: 20220711007
MFR.: EVERFINE	SUR.: 500*8*1.9mm	Shielding Angle:

Table--2

UNIT: cd

C (DEG) □ (DEG)	285	300	315	330	345														
0	93.0	93.9	94.0	94.3	94.8														
5	92.3	93.3	93.3	93.6	94.0														
10	91.0	91.9	91.8	92.1	92.4														
15	89.0	89.9	89.6	90.1	90.2														
20	86.3	87.0	86.6	87.3	87.3														
25	82.9	83.4	83.0	83.9	83.8														
30	78.9	79.3	79.1	79.9	79.6														
35	74.3	74.6	74.6	75.4	74.9														
40	69.1	69.3	69.6	70.5	70.0														
45	63.2	63.5	64.3	65.2	64.5														
50	56.8	57.3	58.8	59.8	58.1														
55	50.0	50.9	52.7	54.3	46.7														
60	42.8	44.1	46.4	48.1	33.8														
65	35.3	37.2	40.2	41.9	23.4														
70	27.7	30.6	33.8	34.4	39.8														
75	20.2	23.6	29.2	22.3	35.9														
80	12.6	19.0	18.8	27.2	31.0														
85	7.60	6.52	19.4	23.4	25.4														
90	4.15	9.11	13.6	17.2	18.4														
95	0.64	1.34	2.96	6.19	7.86														
100	0.50	0.64	1.01	1.56	2.03														
105	0.51	0.59	0.67	0.92	1.26														
110	0.54	0.59	0.65	0.82	1.05														
115	0.59	0.64	0.70	0.86	1.12														
120	0.65	0.70	0.76	0.90	1.14														
125	0.70	0.76	0.82	0.94	1.15														
130	0.75	0.82	0.87	1.00	1.17														
135	0.80	0.87	0.91	1.08	1.15														
140	0.85	0.91	0.96	1.13	1.14														
145	0.90	0.95	1.00	1.14	1.13														
150	0.94	0.98	1.04	1.15	1.13														
155	0.98	1.02	1.10	1.15	1.14														
160	1.02	1.05	1.13	1.15	1.16														
165	1.06	1.08	1.13	1.15	1.19														
170	1.09	1.11	1.13	1.16	1.21														
175	1.11	1.13	1.14	1.16	1.21														
180	1.13	1.13	1.15	1.16	1.21														

C Range: 0 - 360DEG  
 C Interval: 15.0DEG  
 Test Speed: HIGH  
 Temperature:25.3DEG  
 Operators:DAMIN  
 Test Date:2022-07-11

□ Range: 0 - 180DEG  
 □ Interval: 1.0DEG  
 Test System:EVERFINE GO-2000A\_V1 SYSTEM V2.00.444  
 Humidity:65.0%  
 Test Distance:4.880m [K=1.0000]  
 Remarks: