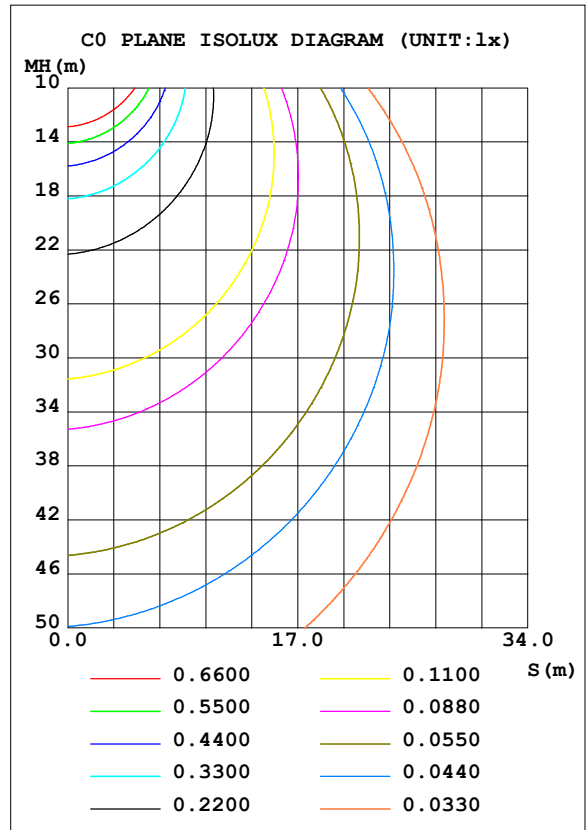
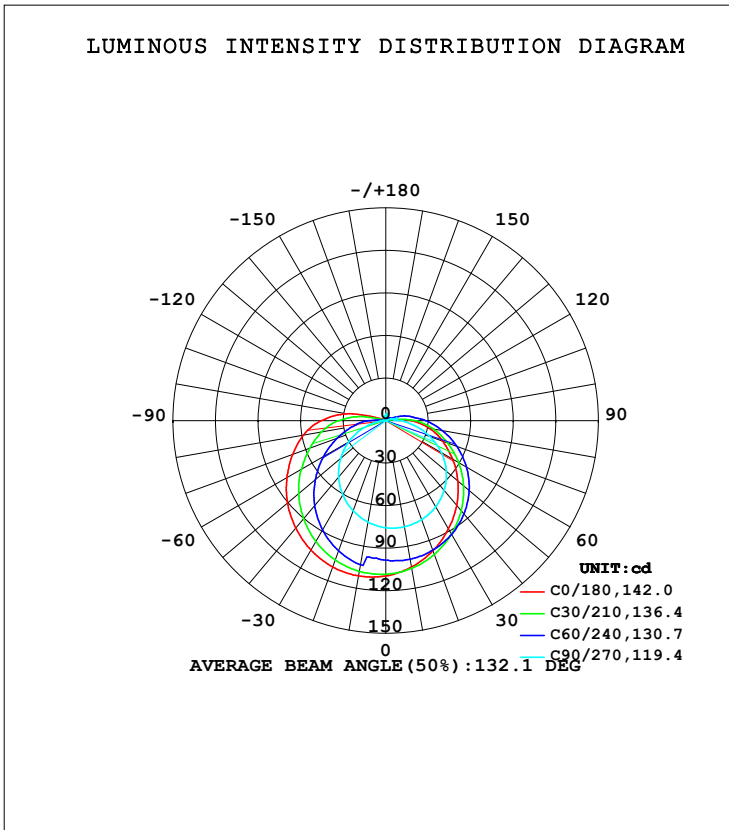


LUMINAIRE PHOTOMETRIC TEST REPORT

NAME: LED Strip	TYPE: Indoor lighting	WEIGHT: 20g
SPEC.: COB LED	DIM.: 500*8*1.9mm	SERIAL No.: 20220711015
MFR.: EVERFINE	SUR.: 500*8*1.9mm	Shielding Angle:

DATA OF LAMP		PHOTOMETRIC DATA			
2T88NW480B-20 (KIP) -UR-EP-LD-RTR 4000K		Imax (cd)	111.2	S/MH (C0/180)	1.44
NOMINAL POWER (W)	4.2352	LOR (%)	100.0	S/MH (C90/270)	1.20
RATED VOLTAGE (V)	DC 24V	TOTAL FLUX (lm)	378.84	<input type="checkbox"/> UP, DN (C0-180)	14.5, 44.1
NOMINAL FLUX (lm)	378.839	CIE CLASS	SEMI-D.	<input type="checkbox"/> UP, DN (C180-360)	5.6, 35.8
LAMPS INSIDE	1	<input type="checkbox"/> up (%)	20.1	CIBSE SHR NOM	0.50
TEST VOLTAGE (V)	DC 24V	<input type="checkbox"/> down (%)	79.9	CIBSE SHR MAX	0.55



C Range: 0 - 360DEG
 C Interval: 15.0DEG
 Test Speed: HIGH
 Temperature: 25.3DEG
 Operators: DAMIN
 Test Date: 2022-07-11

Range: 0 - 180DEG
 Interval: 1.0DEG
 Test System: EVERFINE GO-2000A_V1 SYSTEM V2.00.444
 Humidity: 65.0%
 Test Distance: 4.880m [K=1.0000]
 Remarks:

ZONAL FLUX DIAGRAM

ZONAL FLUX DIAGRAM:

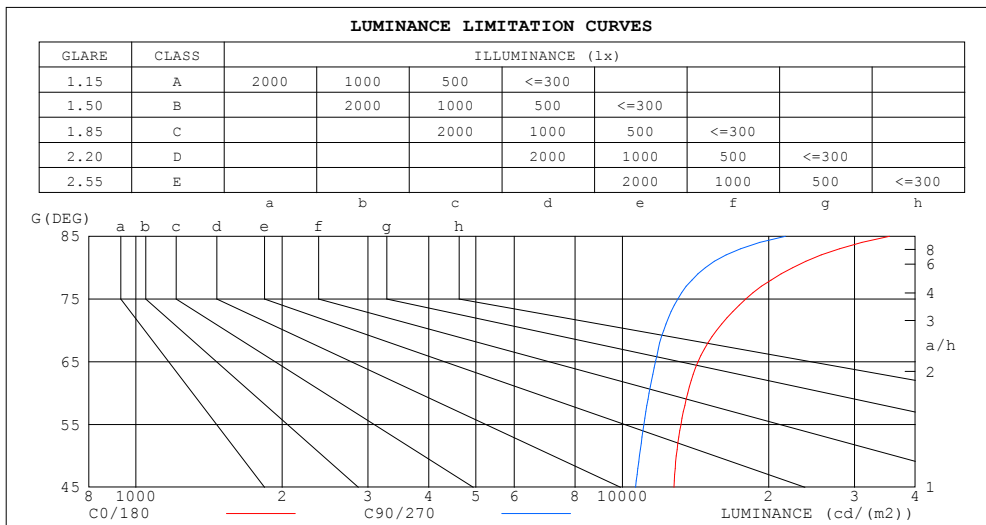
mm	C0	C45	C90	C135	C180	C225	C270	C315	mm	□ zone	□ total	%lum, lamp
10	104.8	105.5	76.02	16.59	111.2	106.5	72.74	13.12	0- 10	7.049	7.049	1.86,1.86
20	97.59	100.4	74.29	18.67	109.8	102.6	67.59	11.46	10- 20	20.43	27.48	7.25,7.25
30	88.34	92.51	70.34	22.09	105.5	95.77	60.63	10.07	20- 30	31.67	59.15	15.6,15.6
40	77.97	82.32	64.13	30.93	98.85	86.44	51.85	8.632	30- 40	40.01	99.17	26.2,26.2
50	66.41	70.35	55.77	43.55	90.45	75.13	41.60	6.907	40- 50	44.97	144.1	38,38
60	54.54	57.08	45.41	55.86	80.52	62.49	30.44	5.014	50- 60	46.12	190.3	50.2,50.2
70	42.76	43.44	33.27	66.15	70.01	49.48	18.63	3.978	60- 70	43.59	233.8	61.7,61.7
80	31.13	30.47	20.59	75.61	59.06	37.95	7.381	4.385	70- 80	38.08	271.9	71.8,71.8
90	18.18	17.32	10.95	83.10	45.49	25.05	0.7272	3.488	80- 90	30.91	302.8	79.9,79.9
100	2.442	3.237	8.119	26.71	28.40	8.167	0.7863	3.899	90-100	21.56	324.4	85.6,85.6
110	0.8776	1.137	4.637	52.62	4.626	0.7472	0.9738	5.714	100-110	12.61	337.0	89,89
120	0.9231	0.8413	0.8273	69.31	0.8037	0.7251	1.205	9.991	110-120	9.509	346.5	91.5,91.5
130	1.000	0.9150	0.5659	73.69	0.8214	0.8270	1.285	7.457	120-130	7.726	354.2	93.5,93.5
140	1.074	0.9936	0.6314	84.05	0.8999	0.9524	1.806	0.7678	130-140	7.888	362.1	95.6,95.6
150	1.142	1.087	0.7216	74.69	1.005	1.056	2.012	0.3738	140-150	7.313	369.4	97.5,97.5
160	1.214	1.175	0.8388	82.58	1.119	1.152	3.045	0.4287	150-160	5.385	374.8	98.9,98.9
170	1.271	1.251	4.971	67.59	1.227	1.239	3.603	2.558	160-170	3.077	377.9	99.8,99.8
180	1.302	1.292	4.588	63.47	1.302	1.300	3.886	62.45	170-180	0.9358	378.8	100,100
DEG	LUMINOUS INTENSITY:cd									UNIT:lm		

C Range: 0 - 360DEG
 C Interval: 15.0DEG
 Test Speed: HIGH
 Temperature:25.3DEG
 Operators:DAMIN
 Test Date:2022-07-11

□ Range: 0 - 180DEG
 □ Interval: 1.0DEG
 Test System:EVERFINE GO-2000A_V1 SYSTEM V2.00.444
 Humidity:65.0%
 Test Distance:4.880m [K=1.0000]
 Remarks:

LUMINANCE LIMITATION CURVES

NAME: LED Strip	TYPE: Indoor lighting	WEIGHT: 20g
SPEC.: COB LED	DIM.: 500*8*1.9mm	SERIAL No.: 20220711015
MFR.: EVERFINE	SUR.: 500*8*1.9mm	Shielding Angle:



LUMINANCE cd/(m2)		
G (DEG)	C0/180	C90/270
85	35407	21629
80	22412	14818
75	17945	13005
70	15628	12159
65	14306	11699
60	13634	11354
55	13197	11077
50	12914	10845
45	12764	10645

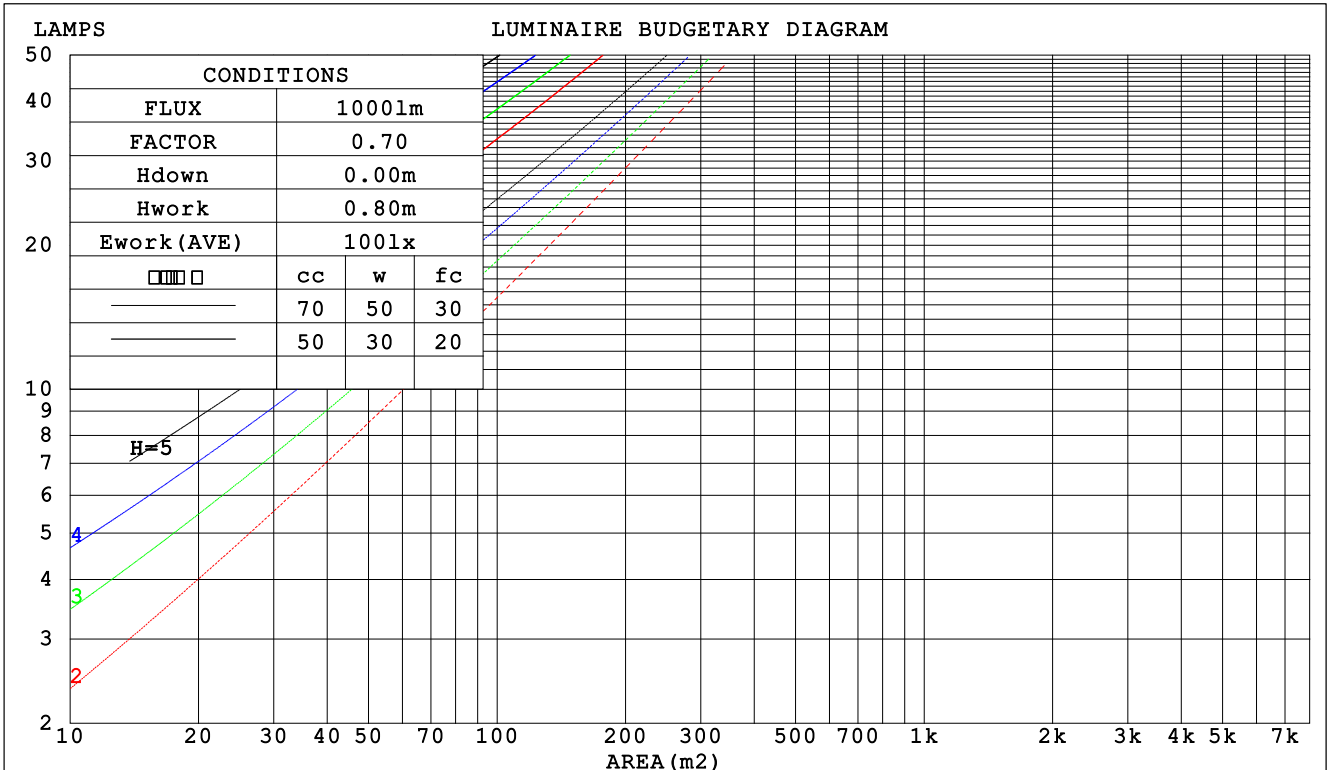
C Range: 0 - 360DEG
 C Interval: 15.0DEG
 Test Speed: HIGH
 Temperature: 25.3DEG
 Operators: DAMIN
 Test Date: 2022-07-11

Range: 0 - 180DEG
 Interval: 1.0DEG
 Test System: EVERFINE GO-2000A_V1 SYSTEM V2.00.444
 Humidity: 65.0%
 Test Distance: 4.880m [K=1.0000]
 Remarks:

CU AND LUMINAIRE BUDGETARY ESTIMATE DIAGRAM

NAME: LED Strip	TYPE: Indoor lighting	WEIGHT: 20g
SPEC.: COB LED	DIM.: 500*8*1.9mm	SERIAL No.: 20220711015
MFR.: EVERFINE	SUR.: 500*8*1.9mm	Shielding Angle:

□cc	80%			70%			50%			30%			10%			0
□w	50%	30%	10%	50%	30%	10%	50%	30%	10%	50%	30%	10%	50%	30%	10%	0
□fc	20%			20%			20%			20%			20%			0
RCR	RCR:Room Cavity Ratio						Coefficients of Utilization(CU)									
0.0	1.14	1.14	1.14	1.09	1.09	1.09	.00	.00	.00	.91	.91	.91	.84	.84	.84	.80
1.0	.95	.89	.84	.90	.85	.81	.82	.78	.75	.75	.72	.69	.68	.65	.63	.60
2.0	.81	.72	.66	.77	.70	.63	.70	.64	.59	.64	.59	.54	.58	.54	.50	.47
3.0	.70	.60	.53	.66	.58	.51	.61	.54	.48	.55	.49	.45	.50	.45	.41	.38
4.0	.61	.51	.44	.58	.49	.43	.53	.46	.40	.48	.42	.37	.44	.39	.35	.32
5.0	.54	.44	.37	.52	.43	.36	.47	.40	.34	.43	.37	.32	.39	.34	.30	.27
6.0	.48	.39	.32	.46	.38	.31	.42	.35	.29	.39	.32	.27	.35	.30	.26	.23
7.0	.44	.34	.28	.42	.33	.27	.38	.31	.26	.35	.29	.24	.32	.27	.23	.20
8.0	.40	.31	.25	.38	.30	.24	.35	.28	.23	.32	.26	.21	.29	.24	.20	.18
9.0	.36	.28	.22	.35	.27	.21	.32	.25	.20	.30	.23	.19	.27	.22	.18	.16
10.0	.33	.25	.20	.32	.24	.19	.30	.23	.18	.27	.21	.17	.25	.20	.16	.14



C Range: 0 - 360DEG
 C Interval: 15.0DEG
 Test Speed: HIGH
 Temperature:25.3DEG
 Operators:DAMIN
 Test Date:2022-07-11

□ Range: 0 - 180DEG
 □ Interval: 1.0DEG
 Test System:EVERFINE GO-2000A_V1 SYSTEM V2.00.444
 Humidity:65.0%
 Test Distance:4.880m [K=1.0000]
 Remarks:

WEC AND CCEC

NAME: LED Strip	TYPE: Indoor lighting	WEIGHT: 20g
SPEC.: COB LED	DIM.: 500*8*1.9mm	SERIAL No.: 20220711015
MFR.: EVERFINE	SUR.: 500*8*1.9mm	Shielding Angle:

<input type="checkbox"/> cc	80%	70%	50%	30%	10%	0
<input type="checkbox"/> w	50% 30% 10%	50% 30% 10%	50% 30% 10%	50% 30% 10%	50% 30% 10%	0
<input type="checkbox"/> fc	20%	20%	20%	20%	20%	0
RCR	RCR:Room Cavity Ratio		Wall Exitance Coefficients (WEC)			
0.0						
1.0	.397 .226 .071	.383 .219 .069	.358 .206 .066	.335 .193 .062	.314 .182 .059	
2.0	.341 .187 .057	.328 .181 .056	.306 .170 .053	.285 .160 .050	.266 .150 .047	
3.0	.301 .160 .048	.290 .155 .047	.270 .146 .044	.251 .137 .042	.233 .129 .040	
4.0	.270 .140 .041	.260 .136 .040	.242 .128 .038	.224 .120 .036	.208 .113 .034	
5.0	.245 .125 .036	.236 .121 .035	.219 .114 .034	.203 .107 .032	.188 .101 .030	
6.0	.224 .112 .032	.216 .109 .031	.200 .103 .030	.186 .097 .028	.172 .091 .027	
7.0	.206 .102 .029	.199 .099 .028	.185 .093 .027	.171 .088 .026	.159 .083 .024	
8.0	.191 .093 .026	.184 .091 .026	.171 .086 .024	.159 .081 .023	.147 .076 .022	
9.0	.178 .086 .024	.172 .084 .023	.160 .079 .022	.148 .074 .021	.138 .070 .020	
10.0	.166 .080 .022	.161 .078 .022	.149 .073 .021	.139 .069 .020	.129 .065 .019	

<input type="checkbox"/> cc	80%	70%	50%	30%	10%	0
<input type="checkbox"/> w	50% 30% 10%	50% 30% 10%	50% 30% 10%	50% 30% 10%	50% 30% 10%	0
<input type="checkbox"/> fc	20%	20%	20%	20%	20%	0
RCR	RCR:Room Cavity Ratio		Ceiling Cavity Exitance Coefficients (CCEC)			
0.0	.343 .343 .343	.293 .293 .293	.200 .200 .200	.115 .115 .115	.037 .037 .037	
1.0	.340 .309 .282	.291 .266 .242	.199 .183 .168	.115 .106 .097	.037 .034 .032	
2.0	.334 .287 .247	.286 .247 .214	.196 .171 .149	.113 .099 .087	.036 .032 .028	
3.0	.326 .270 .226	.280 .233 .196	.192 .162 .137	.111 .095 .081	.036 .031 .027	
4.0	.319 .258 .212	.273 .223 .184	.188 .155 .130	.109 .091 .077	.035 .030 .025	
5.0	.311 .248 .202	.267 .215 .176	.184 .150 .124	.107 .088 .074	.034 .029 .024	
6.0	.303 .241 .195	.261 .208 .170	.180 .146 .120	.104 .086 .072	.034 .028 .024	
7.0	.296 .234 .190	.255 .203 .166	.176 .142 .117	.102 .084 .070	.033 .027 .023	
8.0	.290 .228 .186	.249 .198 .163	.172 .139 .115	.100 .082 .069	.032 .027 .023	
9.0	.283 .224 .183	.244 .194 .160	.169 .136 .114	.098 .081 .068	.032 .026 .022	
10.0	.277 .220 .181	.239 .191 .158	.166 .134 .112	.097 .079 .067	.031 .026 .022	

C Range: 0 - 360DEG
 C Interval: 15.0DEG
 Test Speed: HIGH
 Temperature:25.3DEG
 Operators:DAMIN
 Test Date:2022-07-11

Range: 0 - 180DEG
 Interval: 1.0DEG
 Test System:EVERFINE GO-2000A_V1 SYSTEM V2.00.444
 Humidity:65.0%
 Test Distance:4.880m [K=1.0000]
 Remarks:

UGR(Unified Glare Rating) Table

NAME: LED Strip	TYPE: Indoor lighting	WEIGHT: 20g
SPEC.: COB LED	DIM.: 500*8*1.9mm	SERIAL No.: 20220711015
MFR.: EVERFINE	SUR.: 500*8*1.9mm	Shielding Angle:

ceiling/cavity	0.7	0.7	0.5	0.5	0.3	0.7	0.7	0.5	0.5	0.3
walls	0.5	0.3	0.5	0.3	0.3	0.5	0.3	0.5	0.3	0.3
working plane	0.2	0.2	0.2	0.2	0.2	0.2	0.2	0.2	0.2	0.2
Room dimensions	Viewed crosswise					Viewed endwise				
x = 2H y = 2H	24.8	26.2	25.3	26.7	27.3	24.9	26.3	25.5	26.8	27.5
3H	26.9	28.1	27.4	28.7	29.3	26.8	28.1	27.4	28.7	29.3
4H	28.0	29.2	28.5	29.7	30.4	27.7	28.9	28.3	29.5	30.2
6H	29.1	30.3	29.7	30.9	31.6	28.5	29.6	29.1	30.2	30.9
8H	29.7	30.8	30.3	31.4	32.1	28.9	30.0	29.5	30.6	31.3
12H	30.4	31.4	31.0	32.1	32.8	29.2	30.3	29.9	30.9	31.7
4H 2H	25.6	26.8	26.2	27.4	28.0	25.7	26.9	26.3	27.5	28.2
3H	27.9	28.9	28.5	29.6	30.3	28.0	29.1	28.7	29.7	30.4
4H	29.1	30.1	29.8	30.8	31.5	29.2	30.2	29.8	30.8	31.6
6H	30.5	31.3	31.1	32.0	32.8	30.3	31.1	30.9	31.8	32.6
8H	31.2	32.0	31.8	32.7	33.5	30.7	31.5	31.4	32.2	33.0
12H	31.9	32.7	32.6	33.4	34.2	31.2	32.0	31.9	32.7	33.5
8H 4H	29.7	30.5	30.4	31.2	32.0	29.7	30.6	30.4	31.2	32.0
6H	31.3	32.0	32.0	32.7	33.5	31.3	32.0	32.0	32.7	33.5
8H	32.2	32.8	32.9	33.5	34.4	32.1	32.7	32.8	33.4	34.3
12H	33.1	33.7	33.9	34.4	35.3	32.8	33.3	33.5	34.1	35.0
12H 4H	29.8	30.6	30.5	31.3	32.1	29.8	30.6	30.5	31.3	32.1
6H	31.5	32.1	32.2	32.9	33.7	31.5	32.1	32.2	32.8	33.7
8H	32.5	33.0	33.2	33.8	34.7	32.4	33.0	33.2	33.7	34.6
Variations with the observer position at spacings(CIE Pub.117):										
S = 1.0H	+ 0.1 / - 0.1					+ 0.1 / - 0.2				
1.5H	+ 0.2 / - 0.3					+ 0.3 / - 0.4				
2.0H	+ 0.2 / - 0.4					+ 0.4 / - 0.6				

CIE Pub.117, 378.8 lm Total Lamp Luminous Flux Correct (8log(F/F0) = -3.4)
 Area: 0.008 m2

C Range: 0 - 360DEG
 C Interval: 15.0DEG
 Test Speed: HIGH
 Temperature:25.3DEG
 Operators:DAMIN
 Test Date:2022-07-11

Range: 0 - 180DEG
 Interval: 1.0DEG
 Test System:EVERFINE GO-2000A_V1 SYSTEM V2.00.444
 Humidity:65.0%
 Test Distance:4.880m [K=1.0000]
 Remarks:

UTILIZATION FACTORS TABLE

NAME: LED Strip	TYPE: Indoor lighting	WEIGHT: 20g
SPEC.: COB LED	DIM.: 500*8*1.9mm	SERIAL No.: 20220711015
MFR.: EVERFINE	SUR.: 500*8*1.9mm	Shielding Angle:

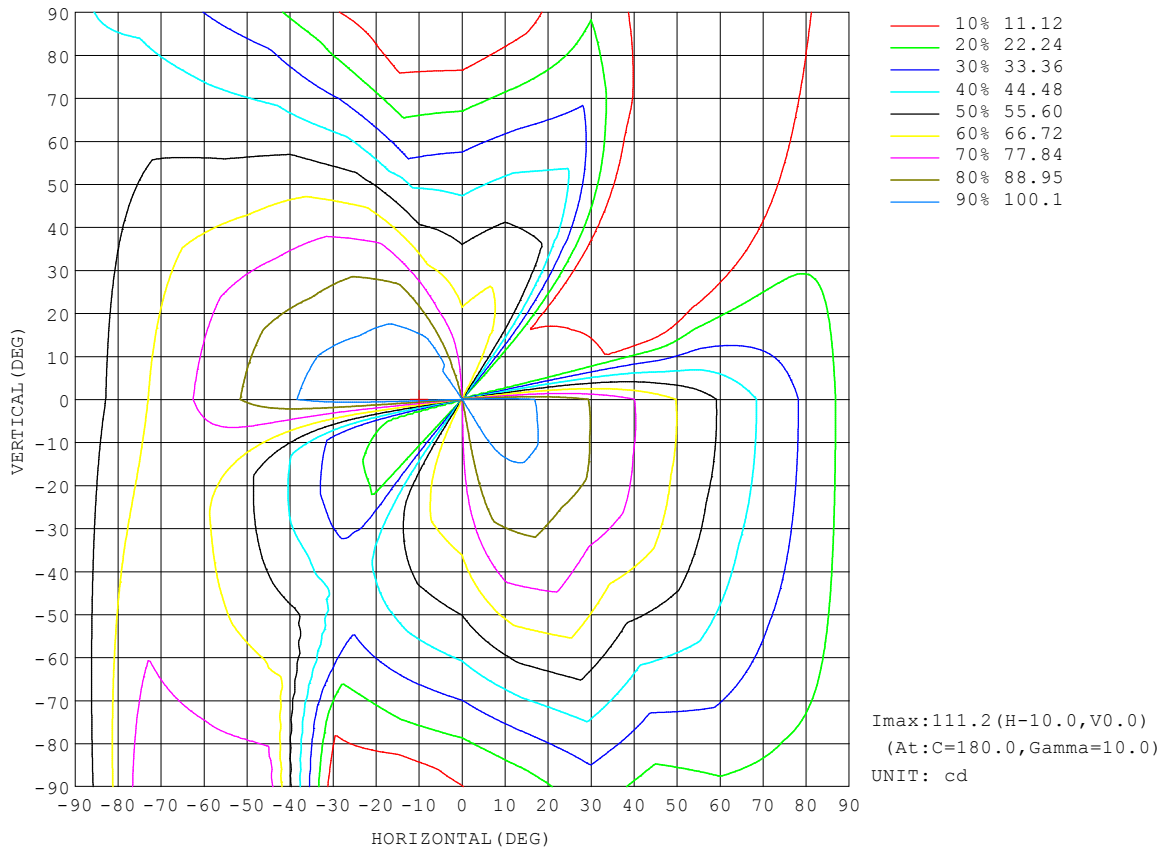
REFLECTANCE										
Ceiling	0.8	0.8	0.8	0.7	0.7	0.7	0.5	0.5	0.5	0
Walls	0.7	0.5	0.3	0.7	0.5	0.3	0.7	0.5	0.3	0
Working plane	0.2	0.2	0.2	0.2	0.2	0.2	0.2	0.2	0.2	0
ROOM INDEX	UTILIZATION FACTORS (PERCENT) $k(RI) \times RCR = 5$									
k = 0.60	46	34	27	45	33	26	43	32	26	19
0.80	56	42	34	54	42	34	51	40	33	25
1.00	63	50	42	61	49	41	57	49	40	30
1.25	70	57	49	68	56	48	63	53	46	36
1.50	75	63	54	72	61	53	67	58	51	40
2.00	83	71	63	79	69	61	73	65	58	46
2.50	87	77	69	84	74	67	77	69	63	50
3.00	91	81	74	87	79	72	80	73	67	53
4.00	96	88	81	92	84	78	84	78	73	58
5.00	99	92	86	95	88	83	87	82	77	61
ROOM INDEX	UF(total)									Direct
According to DIN EN 13032-2 2004			Suspended				SHRNOM = 1.25			

C Range: 0 - 360DEG
 C Interval: 15.0DEG
 Test Speed: HIGH
 Temperature: 25.3DEG
 Operators: DAMIN
 Test Date: 2022-07-11

Range: 0 - 180DEG
 Interval: 1.0DEG
 Test System: EVERFINE GO-2000A_V1 SYSTEM V2.00.444
 Humidity: 65.0%
 Test Distance: 4.880m [K=1.0000]
 Remarks:

ISOCANDELA DIAGRAM

NAME: LED Strip	TYPE: Indoor lighting	WEIGHT: 20g
SPEC.: COB LED	DIM.: 500*8*1.9mm	SERIAL No.: 20220711015
MFR.: EVERFINE	SUR.: 500*8*1.9mm	Shielding Angle:

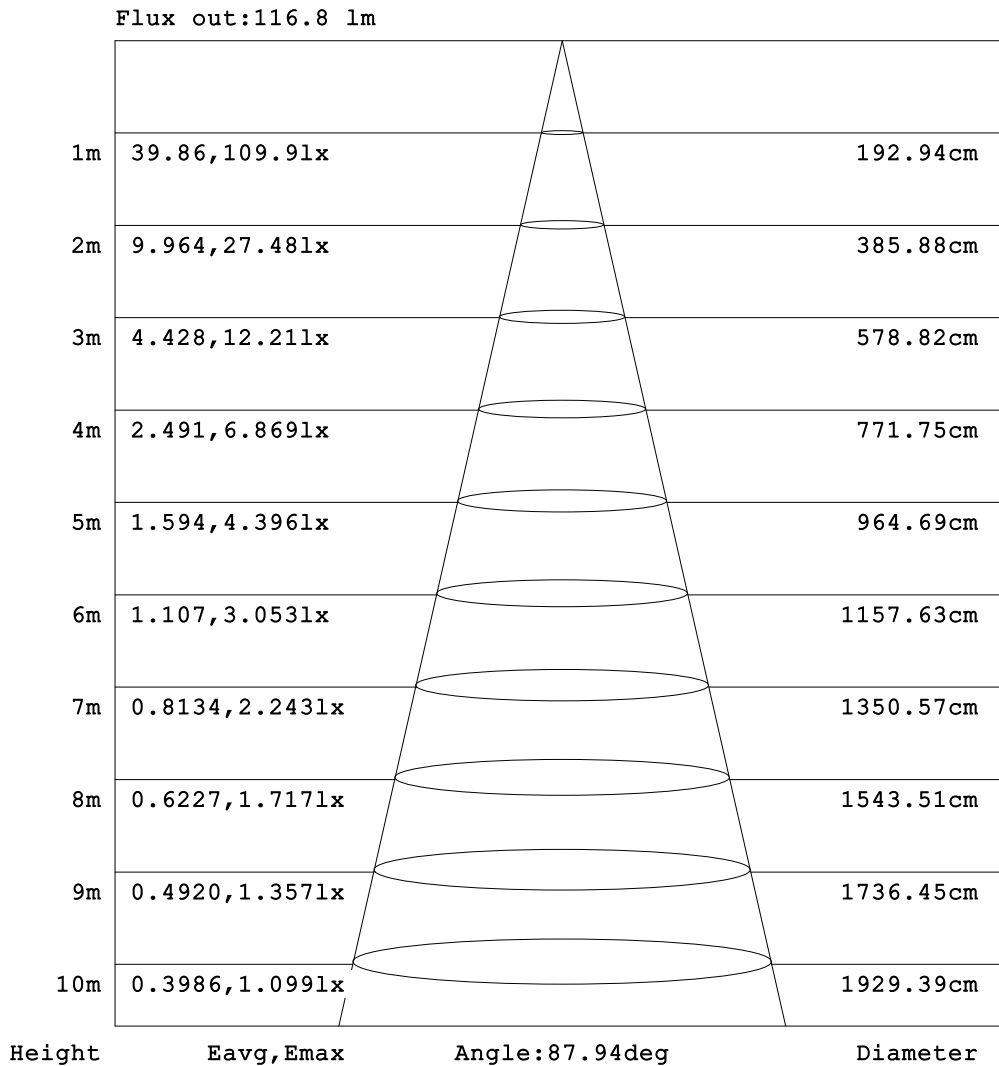


C Range: 0 - 360DEG
 C Interval: 15.0DEG
 Test Speed: HIGH
 Temperature:25.3DEG
 Operators:DAMIN
 Test Date:2022-07-11

Range: 0 - 180DEG
 Interval: 1.0DEG
 Test System:EVERFINE GO-2000A_V1 SYSTEM V2.00.444
 Humidity:65.0%
 Test Distance:4.880m [K=1.0000]
 Remarks:

AAI Figure

NAME: LED Strip	TYPE: Indoor lighting	WEIGHT: 20g
SPEC.: COB LED	DIM.: 500*8*1.9mm	SERIAL No.: 20220711015
MFR.: EVERFINE	SUR.: 500*8*1.9mm	Shielding Angle:



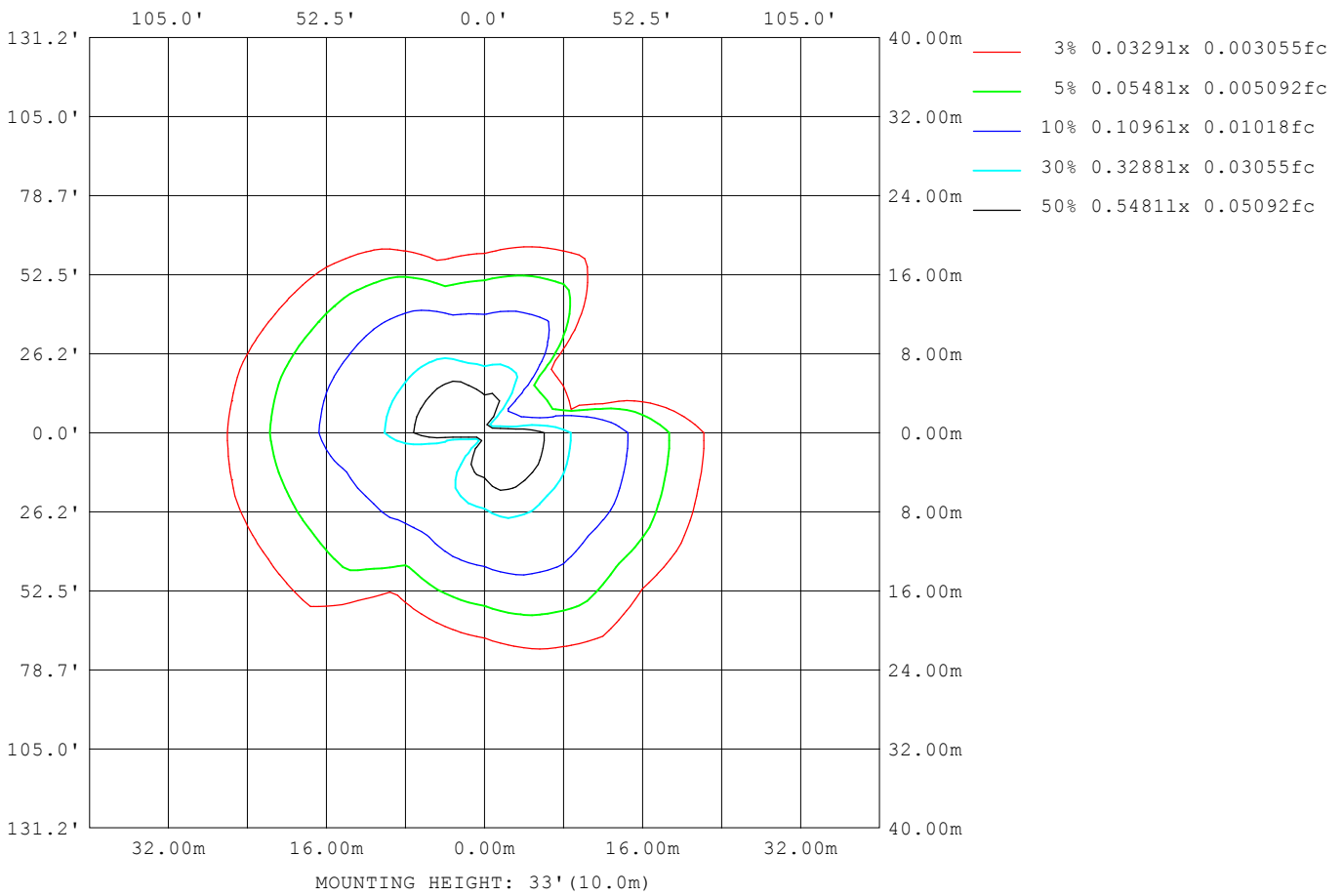
Note: The Curves indicate the illuminated area and the average illumination when the luminaire is at different distance.

C Range: 0 - 360DEG
 C Interval: 15.0DEG
 Test Speed: HIGH
 Temperature: 25.3DEG
 Operators: DAMIN
 Test Date: 2022-07-11

Range: 0 - 180DEG
 Interval: 1.0DEG
 Test System: EVERFINE GO-2000A_V1 SYSTEM V2.00.444
 Humidity: 65.0%
 Test Distance: 4.880m [K=1.0000]
 Remarks:

ISOLUX DIAGRAM

NAME: LED Strip	TYPE: Indoor lighting	WEIGHT: 20g
SPEC.: COB LED	DIM.: 500*8*1.9mm	SERIAL No.: 20220711015
MFR.: EVERFINE	SUR.: 500*8*1.9mm	Shielding Angle:



C Range: 0 - 360DEG
 C Interval: 15.0DEG
 Test Speed: HIGH
 Temperature: 25.3DEG
 Operators: DAMIN
 Test Date: 2022-07-11

Range: 0 - 180DEG
 Interval: 1.0DEG
 Test System: EVERFINE GO-2000A_V1 SYSTEM V2.00.444
 Humidity: 65.0%
 Test Distance: 4.880m [K=1.0000]
 Remarks:

LED Avg.L Report

NAME: LED Strip	TYPE: Indoor lighting	WEIGHT: 20g
SPEC.: COB LED	DIM.: 500*8*1.9mm	SERIAL No.: 20220711015
MFR.: EVERFINE	SUR.: 500*8*1.9mm	Shielding Angle:

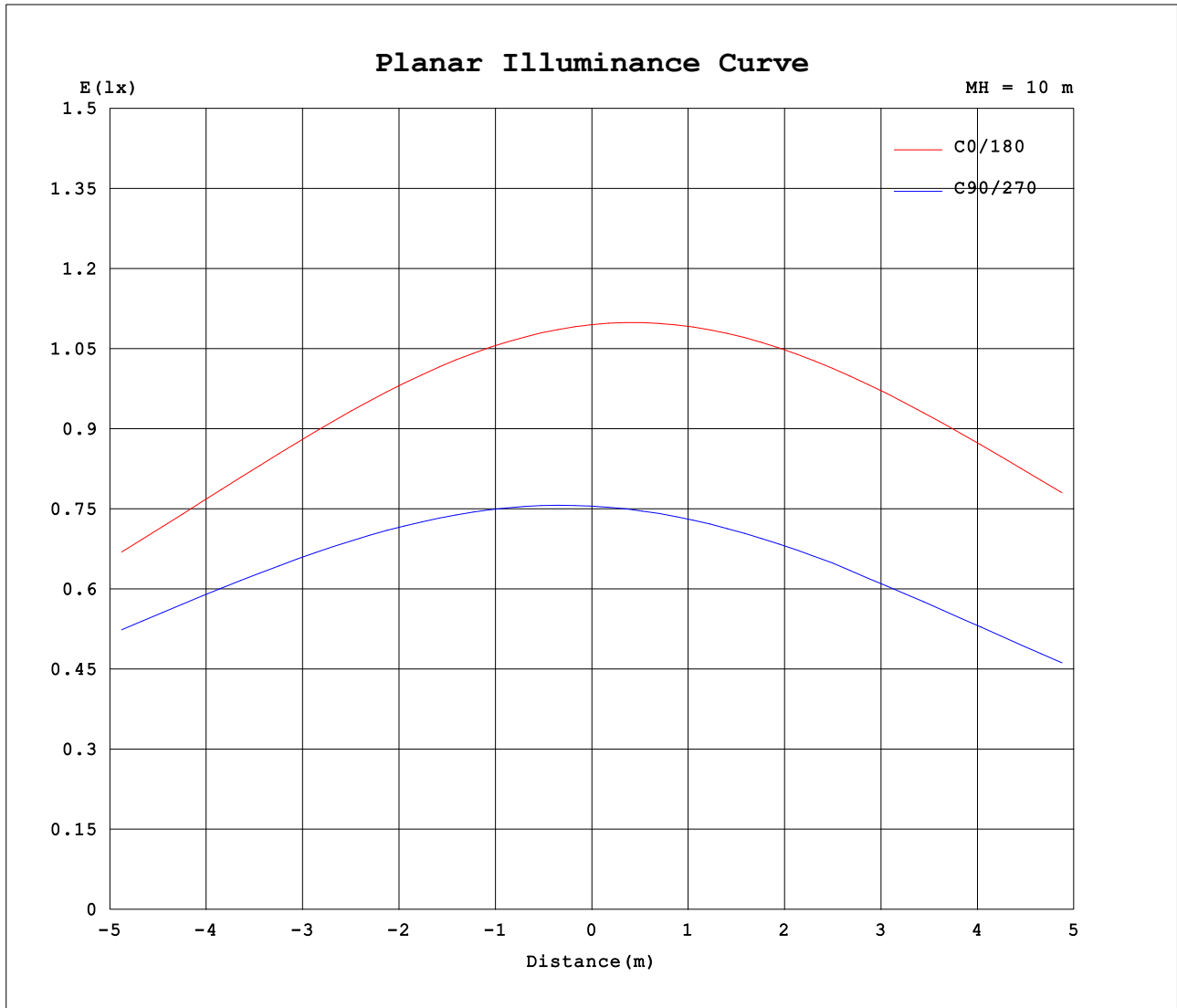
AvgL	cd/m2
L_0~180 (65) av	18279
L_0~180 (75) av	24567
L_0~180 (85) av	55567
L_90~270 (65) av	9488
L_90~270 (75) av	9587
L_90~270 (85) av	13012
L_45 (65) av	12636
L_45 (75) av	18769
L_45 (85) av	49437

Standard: GB/T 29293-2012

C Range: 0 - 360DEG
 C Interval: 15.0DEG
 Test Speed: HIGH
 Temperature:25.3DEG
 Operators:DAMIN
 Test Date:2022-07-11

Range: 0 - 180DEG
 Interval: 1.0DEG
 Test System:EVERFINE GO-2000A_V1 SYSTEM V2.00.444
 Humidity:65.0%
 Test Distance:4.880m [K=1.0000]
 Remarks:

Planar Illuminance Curve



C Range: 0 - 360DEG
 C Interval: 15.0DEG
 Test Speed: HIGH
 Temperature: 25.3DEG
 Operators: DAMIN
 Test Date: 2022-07-11

Range: 0 - 180DEG
 Interval: 1.0DEG
 Test System: EVERFINE GO-2000A_V1 SYSTEM V2.00.444
 Humidity: 65.0%
 Test Distance: 4.880m [K=1.0000]
 Remarks:

LUMINOUS DISTRIBUTION INTENSITY DATA

NAME: LED Strip	TYPE: Indoor lighting	WEIGHT: 20g
SPEC.: COB LED	DIM.: 500*8*1.9mm	SERIAL No.: 20220711015
MFR.: EVERFINE	SUR.: 500*8*1.9mm	Shielding Angle:

Table--1

UNIT: cd

C (DEG) \ □ (DEG)	0	15	30	45	60	75	90	105	120	135	150	165	180	195	210	225	240	255	270
0	110	109	108	108	98.4	91.6	75.6	75.4	63.6	14.9	16.7	20.3	110	109	108	108	98.4	91.6	75.6
5	108	108	107	107	99.1	93.7	76.1	75.3	63.0	15.8	17.4	21.0	111	110	108	107	97.4	89.3	74.4
10	105	105	106	105	99.3	94.3	76.0	74.6	62.0	16.6	17.9	21.5	111	110	108	107	103	86.3	72.7
15	101	102	103	103	98.6	94.0	75.4	73.3	60.5	17.5	18.5	22.0	111	109	107	105	101	82.9	70.4
20	97.6	98.6	100	100	97.2	92.9	74.3	71.5	58.7	18.7	19.3	23.1	110	108	105	103	97.7	78.7	67.6
25	93.1	94.4	96.7	96.8	95.3	91.1	72.6	69.0	56.5	20.2	21.2	25.7	108	106	102	99.5	93.7	74.1	64.3
30	88.3	89.7	92.5	92.5	92.7	88.5	70.3	66.1	53.9	22.1	24.3	30.3	106	103	98.5	95.8	89.1	69.1	60.6
35	83.3	84.8	87.9	87.6	89.6	85.1	67.5	62.8	50.9	25.6	28.9	36.1	102	99.9	94.6	91.4	83.9	63.5	56.4
40	78.0	79.4	82.9	82.3	85.8	81.1	64.1	58.9	47.7	30.9	34.7	42.6	98.9	96.2	90.2	86.4	78.1	57.6	51.9
45	72.2	73.9	77.4	76.6	81.6	76.4	60.2	54.6	44.1	37.4	41.0	48.9	94.9	92.0	85.4	81.0	71.9	51.1	46.9
50	66.4	67.9	71.7	70.4	76.8	71.2	55.8	49.9	40.3	43.5	47.5	54.8	90.4	87.4	80.2	75.1	64.9	44.6	41.6
55	60.6	61.7	65.7	63.8	71.5	64.9	50.8	44.7	36.0	49.7	53.7	60.1	85.6	82.5	74.7	69.0	57.9	35.4	36.1
60	54.5	55.5	59.4	57.1	65.8	58.4	45.4	39.3	31.9	55.9	59.1	64.7	80.5	77.2	68.8	62.5	50.7	29.6	30.4
65	48.4	49.3	52.8	50.2	59.7	51.6	39.6	33.7	27.2	60.6	63.7	69.0	75.2	71.8	62.8	56.0	43.6	23.6	24.6
70	42.8	43.2	46.4	43.4	53.4	44.6	33.3	27.9	20.7	66.1	67.9	72.0	70.0	66.6	57.0	49.5	36.5	17.8	18.6
75	37.2	37.7	40.3	36.9	47.0	37.5	26.9	22.0	14.4	69.9	72.5	74.2	64.6	61.1	51.5	43.6	29.7	12.4	12.8
80	31.1	31.7	34.1	30.5	40.5	30.4	20.6	15.7	10.8	75.6	76.8	77.0	59.1	55.6	46.0	37.9	23.4	8.20	7.38
85	24.7	25.2	27.5	23.9	34.2	23.8	15.1	7.95	7.99	78.2	78.9	79.5	52.8	49.4	40.2	31.9	18.5	5.14	3.06
90	18.2	18.7	20.7	17.3	28.3	18.3	10.9	3.58	4.83	83.1	81.2	81.7	45.5	42.1	33.2	25.1	12.0	2.56	0.73
95	10.2	10.7	11.7	8.65	21.8	13.8	5.84	1.53	3.01	77.1	83.6	83.8	37.6	34.1	25.8	18.0	5.94	0.72	0.68
100	2.44	2.60	4.05	3.24	17.8	9.47	8.12	0.52	0.88	26.7	80.5	85.7	28.4	24.9	17.0	8.17	0.93	0.64	0.79
105	0.93	1.00	1.91	1.64	13.3	7.46	4.70	0.46	0.62	50.7	63.8	87.4	14.4	11.6	5.52	1.74	0.60	0.69	0.87
110	0.88	0.89	1.13	1.14	7.38	3.21	4.64	0.47	0.50	52.6	20.2	89.1	4.63	5.19	2.18	0.75	0.62	0.75	0.97
115	0.88	0.89	0.90	0.76	5.09	2.51	0.92	0.50	0.74	54.7	34.0	85.0	1.06	2.53	1.06	0.71	0.67	0.85	1.08
120	0.92	0.93	0.89	0.84	4.20	5.48	0.83	0.55	1.49	69.3	39.0	42.2	0.80	0.82	0.76	0.73	0.73	0.91	1.20
125	0.96	0.97	0.88	0.88	1.09	2.50	0.57	0.57	1.33	74.8	46.1	15.8	0.80	0.79	0.80	0.77	0.80	0.98	1.25
130	1.00	1.01	0.94	0.92	0.72	0.68	0.57	0.60	0.62	73.7	54.5	3.88	0.82	0.80	0.83	0.83	0.86	1.08	1.29
135	1.04	1.05	0.98	0.94	0.73	0.74	0.60	0.64	0.63	77.5	60.2	20.9	0.86	0.85	0.88	0.90	0.91	1.19	1.31
140	1.07	1.08	1.01	0.99	0.79	0.77	0.63	0.68	0.66	84.0	64.1	34.0	0.90	0.90	0.94	0.95	0.97	1.29	1.81
145	1.11	1.12	1.05	1.04	0.81	0.82	0.68	0.72	0.70	79.6	66.7	43.7	0.95	0.95	0.99	1.01	1.02	1.33	2.16
150	1.14	1.16	1.10	1.09	0.87	0.87	0.72	0.77	0.74	74.7	68.9	49.6	1.01	1.00	1.04	1.06	1.08	1.45	2.01
155	1.18	1.19	1.14	1.13	0.92	0.93	0.77	0.82	0.79	87.8	70.6	53.2	1.06	1.06	1.09	1.11	1.13	1.62	2.41
160	1.21	1.22	1.18	1.18	0.98	0.98	0.84	0.86	0.84	82.6	71.3	55.7	1.12	1.11	1.14	1.15	1.17	2.07	3.05
165	1.25	1.25	1.21	1.21	1.03	1.04	0.91	0.94	0.91	75.0	71.4	59.7	1.18	1.16	1.19	1.20	1.22	2.51	3.38
170	1.27	1.28	1.25	1.25	1.86	1.92	4.97	4.66	5.91	67.6	70.1	38.2	1.23	1.21	1.23	1.24	1.26	2.85	3.60
175	1.29	1.30	1.27	1.29	1.61	1.67	4.79	4.77	12.6	68.5	67.2	0.78	1.27	1.25	1.27	1.27	1.29	3.20	3.78
180	1.30	1.30	1.29	1.29	1.41	1.48	4.59	4.91	14.8	63.5	33.2	0.69	1.30	1.29	1.29	1.30	1.30	3.53	3.89

C Range: 0 - 360DEG
 C Interval: 15.0DEG
 Test Speed: HIGH
 Temperature: 25.3DEG
 Operators: DAMIN
 Test Date: 2022-07-11

□ Range: 0 - 180DEG
 □ Interval: 1.0DEG
 Test System: EVERFINE GO-2000A_V1 SYSTEM V2.00.444
 Humidity: 65.0%
 Test Distance: 4.880m [K=1.0000]
 Remarks:

LUMINOUS DISTRIBUTION INTENSITY DATA

NAME: LED Strip	TYPE: Indoor lighting	WEIGHT: 20g
SPEC.: COB LED	DIM.: 500*8*1.9mm	SERIAL No.: 20220711015
MFR.: EVERFINE	SUR.: 500*8*1.9mm	Shielding Angle:

Table--2

UNIT: cd

C (DEG) □ (DEG)	285	300	315	330	345														
0	75.4	63.6	14.9	16.7	20.3														
5	75.0	63.7	14.0	15.8	19.5														
10	74.0	63.6	13.1	15.0	18.5														
15	72.5	62.9	12.3	14.1	17.3														
20	70.5	62.8	11.5	13.1	15.9														
25	68.0	61.4	10.7	12.1	14.3														
30	65.0	59.5	10.1	11.1	12.8														
35	61.4	57.8	9.42	10.1	11.0														
40	57.5	55.6	8.63	9.03	9.04														
45	53.0	54.2	7.78	7.80	6.89														
50	48.2	50.5	6.91	6.38	7.35														
55	43.0	46.5	5.98	4.94	10.6														
60	37.5	42.4	5.01	6.19	10.7														
65	32.0	38.3	4.05	7.83	10.3														
70	26.5	34.1	3.98	7.16	9.34														
75	21.1	30.3	4.99	6.56	8.39														
80	16.0	26.9	4.39	5.86	7.51														
85	11.3	24.0	3.86	5.19	6.75														
90	7.85	21.5	3.49	4.54	6.12														
95	5.40	18.9	3.44	3.71	5.17														
100	1.48	14.1	3.90	4.05	5.46														
105	1.70	11.7	4.69	5.00	5.92														
110	1.86	10.4	5.71	6.58	6.84														
115	2.09	11.5	4.31	8.73	8.49														
120	2.71	11.7	9.99	11.6	10.9														
125	3.75	11.7	10.9	15.1	14.6														
130	4.74	12.0	7.46	18.7	19.2														
135	5.44	12.3	11.5	22.8	23.2														
140	6.01	12.2	0.77	25.2	27.0														
145	6.40	12.5	0.90	23.8	30.4														
150	6.61	12.0	0.37	15.6	33.7														
155	6.74	11.7	0.38	5.65	33.7														
160	6.84	10.5	0.43	5.03	21.5														
165	6.79	10.1	0.63	0.45	9.49														
170	6.65	9.29	2.56	0.64	0.45														
175	6.55	8.38	57.7	0.95	0.47														
180	6.44	7.43	62.5	29.7	0.68														

C Range: 0 - 360DEG
 C Interval: 15.0DEG
 Test Speed: HIGH
 Temperature:25.3DEG
 Operators:DAMIN
 Test Date:2022-07-11

□ Range: 0 - 180DEG
 □ Interval: 1.0DEG
 Test System:EVERFINE GO-2000A_V1 SYSTEM V2.00.444
 Humidity:65.0%
 Test Distance:4.880m [K=1.0000]
 Remarks: