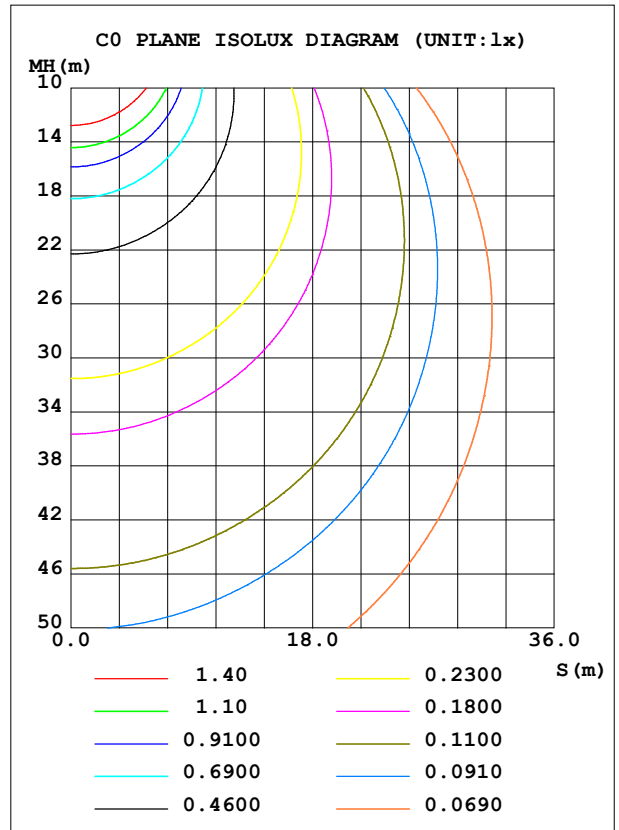
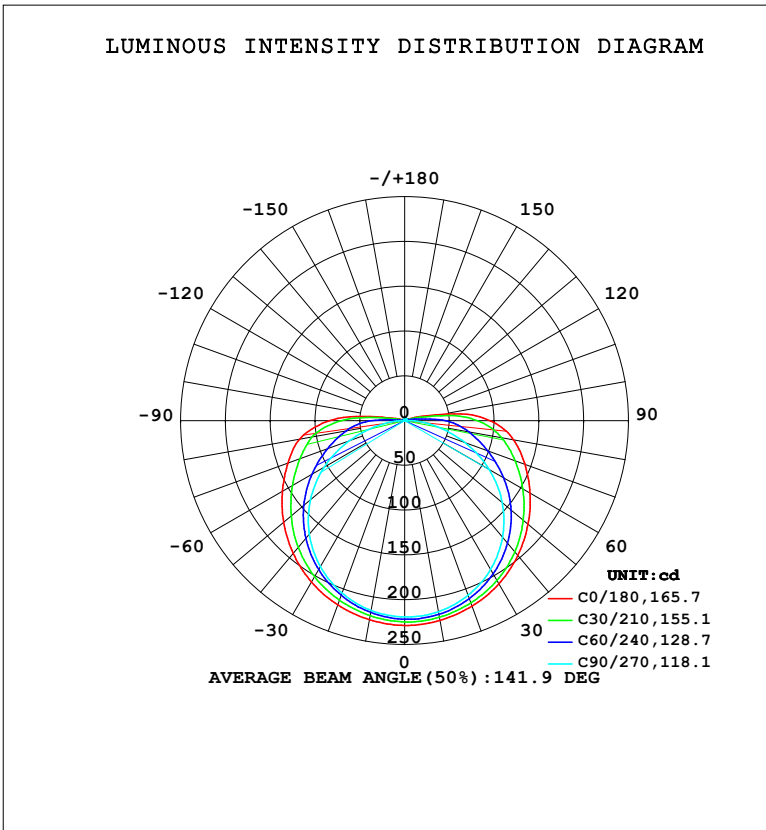


LUMINAIRE PHOTOMETRIC TEST REPORT

NAME: LED Strip	TYPE: Indoor lighting	WEIGHT: 20g
SPEC.: LED	DIM.: 500*8*1.9MM	SERIAL No.: 20240710014
MFR.: EVERFINE	SUR.: 500*8MM	Shielding Angle:

DATA OF LAMP		PHOTOMETRIC DATA			
NOV180B-24 (WCP) -UR-HE (K) -EP		Eff: 127.83 lm/W			
		Imax (cd)	228.7	S/MH (C0/180)	1.36
NOMINAL POWER (W)	7.04999	LOR (%)	100.0	S/MH (C90/270)	1.28
RATED VOLTAGE (V)	DC 24V	TOTAL FLUX (lm)	908.17	η UP, DN (C0-180)	3.3, 48.2
NOMINAL FLUX (lm)	908.171	CIE CLASS	DIRECT	η UP, DN (C180-360)	2.9, 45.7
LAMPS INSIDE	1	η up (%)	6.1	CIBSE SHR NOM	1.50
TEST VOLTAGE (V)	DC 24V	η down (%)	93.9	CIBSE SHR MAX	1.55



C Range: 0 - 360DEG
 C Interval: 15.0DEG
 Test Speed: HIGH
 Temperature: 25.3°C
 Operators: DAMIN
 Test Date: 2024-07-27

γ Range: 0 - 180DEG
 γ Interval: 1.0DEG
 Test System: EVERFINE GO-2000B_V1 SYSTEM V2.00.471
 Humidity: 65.0%
 Test Distance: 4.880m [K=1.0000]
 Remarks:

ZONAL FLUX DIAGRAM

ZONAL FLUX DIAGRAM:

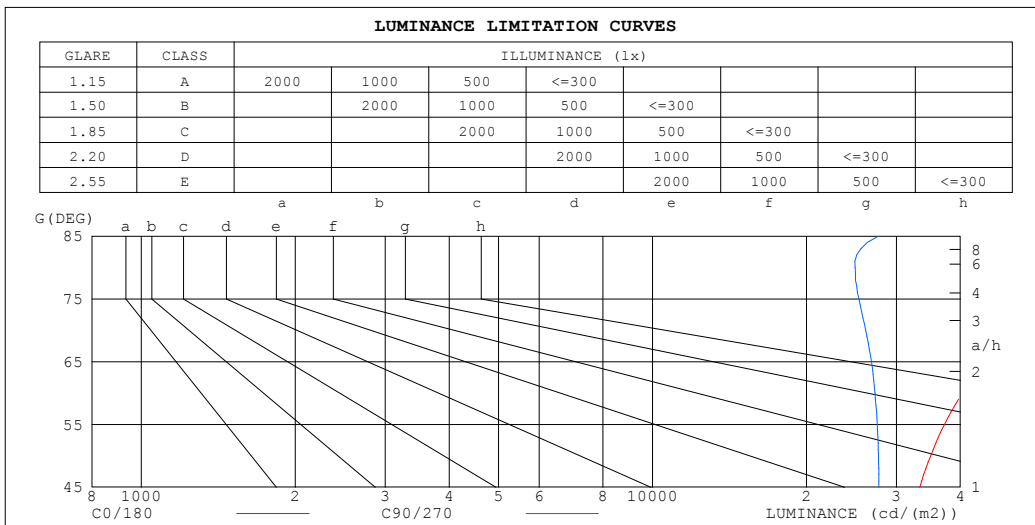
γ	C0	C45	C90	C135	C180	C225	C270	C315	γ	Φ zone	Φ total	%lum,lamp
10	226.6	221.2	216.6	217.4	225.7	218.8	215.2	216.4	0- 10	21.05	21.05	2.32,2.32
20	220.4	214.0	207.5	210.0	218.9	209.7	204.8	207.7	10- 20	60.95	82.00	9.03,9.03
30	210.5	202.1	191.9	197.8	208.1	195.9	188.2	194.5	20- 30	94.67	176.7	19.5,19.5
40	196.6	185.5	170.1	181.0	193.6	177.6	165.7	176.8	30- 40	118.8	295.5	32.5,32.5
50	179.9	164.7	142.2	160.5	176.5	155.9	137.3	154.8	40- 50	131.2	426.7	47,47
60	161.6	141.2	109.0	137.9	157.6	132.3	103.6	131.1	50- 60	131.3	558.1	61.5,61.5
70	143.0	117.2	71.52	115.5	138.6	109.3	65.38	108.0	60- 70	120.2	678.3	74.7,74.7
80	123.6	94.28	34.60	94.53	119.3	87.92	27.17	86.97	70- 80	100.5	778.7	85.7,85.7
90	95.17	65.81	6.042	60.11	83.99	55.38	1.934	40.71	80- 90	73.90	852.6	93.9,93.9
100	40.81	18.99	1.137	12.44	20.50	7.636	1.120	15.75	90-100	36.96	889.6	98,98
110	8.102	3.526	1.222	3.482	3.398	1.562	1.321	3.436	100-110	8.333	897.9	98.9,98.9
120	2.015	1.864	1.467	1.608	1.909	1.702	1.601	3.673	110-120	2.724	900.6	99.2,99.2
130	2.039	1.920	1.720	1.803	2.065	1.926	1.850	3.981	120-130	2.106	902.8	99.4,99.4
140	2.173	2.112	1.965	2.023	2.214	2.122	2.085	3.868	130-140	1.804	904.6	99.6,99.6
150	2.322	2.296	2.203	2.226	2.364	2.309	2.306	3.307	140-150	1.486	906.0	99.8,99.8
160	2.502	2.477	2.422	2.424	2.535	2.487	2.503	2.750	150-160	1.135	907.2	99.9,99.9
170	2.670	2.648	2.643	2.638	2.695	2.646	2.668	2.704	160-170	0.7318	907.9	100,100
180	2.785	2.755	2.755	2.783	2.784	2.749	2.756	2.769	170-180	0.2585	908.2	100,100
DEG	LUMINOUS INTENSITY:cd									UNIT:lm		

C Range: 0 - 360DEG
 C Interval: 15.0DEG
 Test Speed: HIGH
 Temperature:25.3°C
 Operators:DAMIN
 Test Date:2024-07-27

γ Range: 0 - 180DEG
 γ Interval: 1.0DEG
 Test System:EVERFINE GO-2000B_V1 SYSTEM V2.00.471
 Humidity:65.0%
 Test Distance:4.880m [K=1.0000]
 Remarks:

LUMINANCE LIMITATION CURVES

NAME: LED Strip	TYPE: Indoor lighting	WEIGHT: 20g
SPEC.: LED	DIM.: 500*8*1.9MM	SERIAL No.: 20240710014
MFR.: EVERFINE	SUR.: 500*8MM	Shielding Angle:



LUMINANCE cd/(m2)		
G (DEG)	C0/180	C90/270
85	159808	27649
80	88982	24905
75	64502	25329
70	52252	26140
65	45040	26796
60	40411	27248
55	37250	27514
50	34987	27658
45	33316	27728

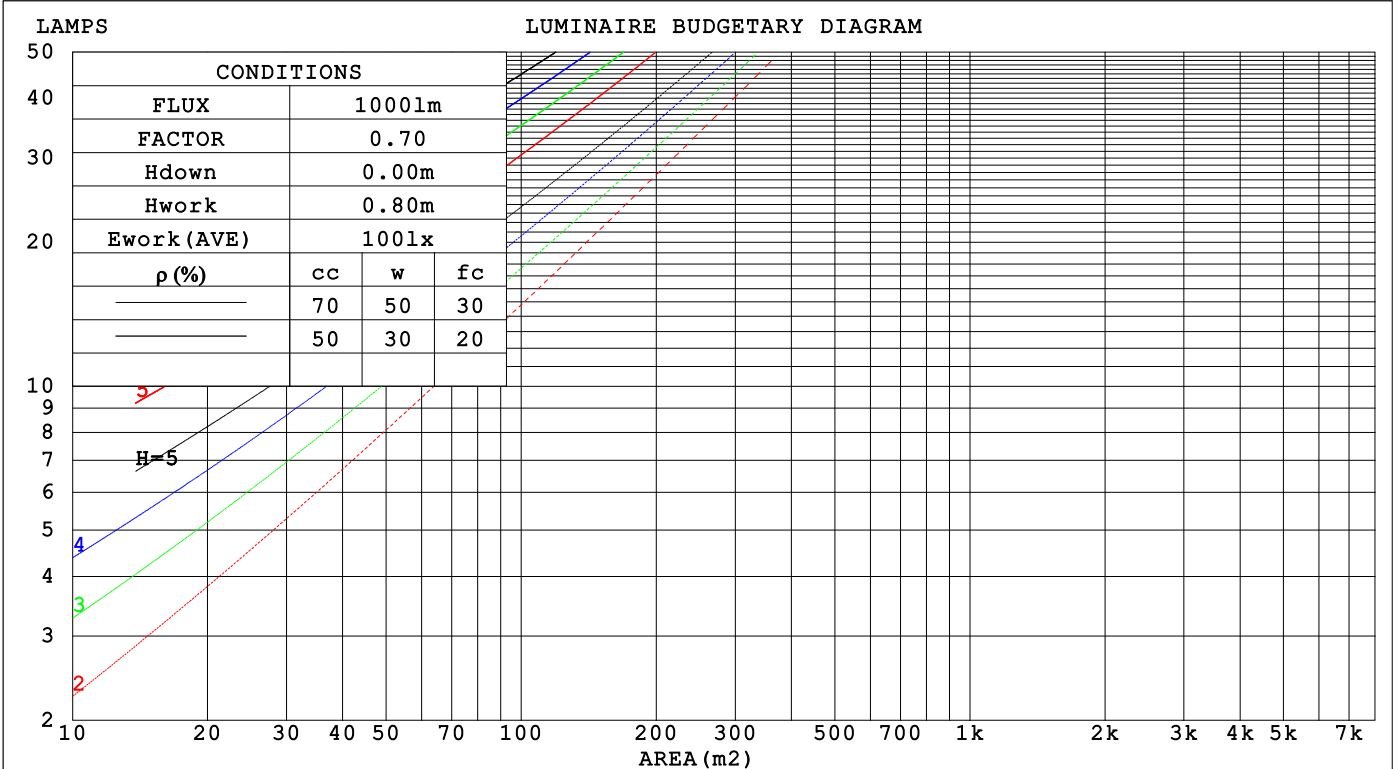
C Range: 0 - 360DEG
 C Interval: 15.0DEG
 Test Speed: HIGH
 Temperature: 25.3°C
 Operators: DAMIN
 Test Date: 2024-07-27

γ Range: 0 - 180DEG
 γ Interval: 1.0DEG
 Test System: EVERFINE GO-2000B_V1 SYSTEM V2.00.471
 Humidity: 65.0%
 Test Distance: 4.880m [K=1.0000]
 Remarks:

CU AND LUMINAIRE BUDGETARY ESTIMATE DIAGRAM

NAME: LED Strip	TYPE: Indoor lighting	WEIGHT: 20g
SPEC.: LED	DIM.: 500*8*1.9MM	SERIAL No.: 20240710014
MFR.: EVERFINE	SUR.: 500*8MM	Shielding Angle:

pcc	80%			70%			50%			30%			10%			0
pw	50%	30%	10%	50%	30%	10%	50%	30%	10%	50%	30%	10%	50%	30%	10%	0
pfc	20%			20%			20%			20%			20%			0
RCR	RCR:Room Cavity Ratio						Coefficients of Utilization(CU)									
0.0	1.18	1.18	1.18	1.14	1.14	1.14	1.08	1.08	1.08	1.02	1.02	1.02	.96	.96	.96	.94
1.0	.98	.92	.87	.95	.90	.85	.89	.85	.81	.84	.81	.78	.79	.77	.74	.71
2.0	.83	.75	.68	.81	.73	.67	.76	.70	.64	.72	.66	.62	.68	.63	.60	.57
3.0	.72	.63	.55	.70	.61	.54	.66	.59	.52	.62	.56	.51	.59	.54	.49	.46
4.0	.63	.53	.46	.61	.52	.45	.58	.50	.44	.55	.48	.43	.52	.46	.41	.39
5.0	.56	.46	.39	.54	.45	.38	.52	.44	.37	.49	.42	.36	.46	.40	.35	.33
6.0	.50	.40	.34	.49	.40	.33	.46	.38	.32	.44	.37	.32	.42	.36	.31	.28
7.0	.45	.36	.29	.44	.35	.29	.42	.34	.28	.40	.33	.28	.38	.32	.27	.25
8.0	.41	.32	.26	.40	.32	.26	.38	.31	.25	.37	.30	.25	.35	.29	.24	.22
9.0	.38	.29	.23	.37	.29	.23	.35	.28	.23	.34	.27	.22	.32	.26	.22	.20
10.0	.35	.26	.21	.34	.26	.21	.32	.25	.20	.31	.25	.20	.30	.24	.20	.18



C Range: 0 - 360DEG
 C Interval: 15.0DEG
 Test Speed: HIGH
 Temperature:25.3°C
 Operators:DAMIN
 Test Date:2024-07-27

γ Range: 0 - 180DEG
 γ Interval: 1.0DEG
 Test System:EVERFINE GO-2000B_V1 SYSTEM V2.00.471
 Humidity:65.0%
 Test Distance:4.880m [K=1.0000]
 Remarks:

WEC AND CCEC

NAME: LED Strip	TYPE: Indoor lighting	WEIGHT: 20g
SPEC.: LED	DIM.: 500*8*1.9MM	SERIAL No.: 20240710014
MFR.: EVERFINE	SUR.: 500*8MM	Shielding Angle:

ρ_{cc}	80%			70%			50%			30%			10%			0
ρ_w	50%	30%	10%	50%	30%	10%	50%	30%	10%	50%	30%	10%	50%	30%	10%	0
ρ_{fc}	20%			20%			20%			20%			20%			0
RCR	RCR:Room Cavity Ratio						Wall Exitance Coefficients(WEC)									
0.0																
1.0	.401	.228	.072	.392	.224	.071	.375	.215	.069	.359	.207	.066	.345	.200	.064	
2.0	.347	.190	.058	.339	.187	.057	.323	.180	.056	.309	.173	.054	.296	.167	.053	
3.0	.308	.164	.049	.300	.161	.048	.286	.155	.047	.274	.150	.046	.262	.145	.045	
4.0	.276	.144	.042	.270	.141	.042	.257	.136	.041	.246	.132	.040	.235	.128	.039	
5.0	.251	.128	.037	.245	.126	.037	.234	.122	.036	.223	.118	.035	.214	.114	.034	
6.0	.229	.115	.033	.224	.113	.033	.214	.110	.032	.205	.106	.031	.196	.103	.031	
7.0	.211	.104	.030	.206	.103	.029	.197	.100	.029	.189	.097	.028	.181	.094	.028	
8.0	.195	.096	.027	.191	.094	.027	.183	.091	.026	.175	.089	.026	.168	.086	.025	
9.0	.182	.088	.025	.178	.087	.024	.171	.084	.024	.164	.082	.023	.157	.080	.023	
10.0	.170	.082	.023	.167	.080	.022	.160	.078	.022	.153	.076	.022	.147	.074	.021	

ρ_{cc}	80%			70%			50%			30%			10%			0
ρ_w	50%	30%	10%	50%	30%	10%	50%	30%	10%	50%	30%	10%	50%	30%	10%	0
ρ_{fc}	20%			20%			20%			20%			20%			0
RCR	RCR:Room Cavity Ratio						Ceiling Cavity Exitance Coefficients(CCEC)									
0.0	.237	.237	.237	.203	.203	.203	.138	.138	.138	.079	.079	.079	.025	.025	.025	
1.0	.234	.202	.174	.200	.174	.150	.137	.119	.104	.079	.069	.060	.025	.022	.019	
2.0	.227	.179	.139	.194	.154	.120	.133	.107	.084	.077	.062	.049	.025	.020	.016	
3.0	.219	.162	.117	.188	.140	.101	.129	.097	.071	.075	.057	.042	.024	.018	.014	
4.0	.211	.149	.102	.181	.129	.089	.125	.090	.062	.072	.053	.037	.023	.017	.012	
5.0	.203	.139	.092	.175	.121	.080	.120	.084	.057	.070	.049	.034	.022	.016	.011	
6.0	.196	.131	.085	.168	.114	.074	.116	.080	.052	.067	.047	.031	.022	.015	.010	
7.0	.188	.124	.080	.162	.108	.069	.112	.076	.049	.065	.045	.029	.021	.015	.010	
8.0	.181	.119	.076	.156	.103	.066	.108	.072	.047	.063	.043	.028	.020	.014	.009	
9.0	.175	.114	.073	.151	.099	.063	.104	.069	.045	.061	.041	.027	.020	.013	.009	
10.0	.169	.110	.070	.145	.095	.061	.101	.067	.043	.059	.040	.026	.019	.013	.009	

C Range: 0 - 360DEG
 C Interval: 15.0DEG
 Test Speed: HIGH
 Temperature:25.3°C
 Operators:DAMIN
 Test Date:2024-07-27

γ Range: 0 - 180DEG
 γ Interval: 1.0DEG
 Test System:EVERFINE GO-2000B_V1 SYSTEM V2.00.471
 Humidity:65.0%
 Test Distance:4.880m [K=1.0000]
 Remarks:

UGR(Unified Glare Rating) Table

NAME: LED Strip		TYPE: Indoor lighting				WEIGHT: 20g					
SPEC.: LED		DIM.: 500*8*1.9MM				SERIAL No.: 20240710014					
MFR.: EVERFINE		SUR.: 500*8MM				Shielding Angle:					
ceiling/cavity		0.7	0.7	0.5	0.5	0.3	0.7	0.7	0.5	0.5	0.3
walls		0.5	0.3	0.5	0.3	0.3	0.5	0.3	0.5	0.3	0.3
working plane		0.2	0.2	0.2	0.2	0.2	0.2	0.2	0.2	0.2	0.2
Room dimensions		Viewed crosswise					Viewed endwise				
x = 2H y = 2H		25.9	27.4	26.2	27.7	28.1	24.2	25.8	24.6	26.1	26.4
	3H	28.6	30.0	29.0	30.4	30.8	25.9	27.4	26.3	27.7	28.1
	4H	30.1	31.5	30.5	31.8	32.2	26.6	28.0	27.0	28.4	28.8
	6H	31.7	33.1	32.2	33.5	33.9	27.2	28.5	27.7	28.9	29.4
	8H	32.7	33.9	33.1	34.3	34.8	27.5	28.7	27.9	29.1	29.6
	12H	33.7	34.9	34.1	35.3	35.8	27.7	28.9	28.1	29.3	29.8
	4H 2H	26.5	27.9	26.9	28.3	28.7	25.3	26.7	25.7	27.1	27.5
	3H	29.5	30.7	29.9	31.1	31.6	27.3	28.5	27.7	28.9	29.4
	4H	31.2	32.3	31.7	32.8	33.2	28.2	29.4	28.7	29.8	30.3
	6H	33.1	34.1	33.6	34.6	35.1	29.0	30.0	29.5	30.5	31.0
	8H	34.1	35.1	34.6	35.6	36.1	29.3	30.3	29.8	30.8	31.3
	12H	35.3	36.2	35.8	36.7	37.2	29.6	30.5	30.1	31.0	31.5
	8H 4H	31.6	32.6	32.1	33.1	33.6	29.3	30.2	29.8	30.7	31.2
	6H	33.8	34.6	34.3	35.1	35.7	30.4	31.3	31.0	31.8	32.3
	8H	35.1	35.8	35.6	36.3	36.9	31.0	31.7	31.5	32.3	32.8
	12H	36.5	37.1	37.1	37.7	38.3	31.5	32.1	32.0	32.7	33.3
	12H 4H	31.7	32.5	32.2	33.0	33.6	29.6	30.5	30.1	31.0	31.5
	6H	34.0	34.7	34.5	35.2	35.8	31.0	31.7	31.6	32.3	32.9
	8H	35.3	36.0	35.9	36.5	37.1	31.7	32.4	32.3	32.9	33.5
Variations with the observer position at spacings(CIE Pub.117):											
S = 1.0H		+ 0.1 / - 0.1					+ 0.1 / - 0.1				
1.5H		+ 0.2 / - 0.3					+ 0.2 / - 0.3				
2.0H		+ 0.2 / - 0.4					+ 0.2 / - 0.4				

CIE Pub.117, 908.2 lm Total Lamp Luminous Flux Correct (8log(F/F0) = -0.3)
 Area: 0.008 m2

C Range: 0 - 360DEG
 C Interval: 15.0DEG
 Test Speed: HIGH
 Temperature:25.3°C
 Operators:DAMIN
 Test Date:2024-07-27

γ Range: 0 - 180DEG
 γ Interval: 1.0DEG
 Test System:EVERFINE GO-2000B_V1 SYSTEM V2.00.471
 Humidity:65.0%
 Test Distance:4.880m [K=1.0000]
 Remarks:

UTILIZATION FACTORS TABLE

NAME: LED Strip	TYPE: Indoor lighting	WEIGHT: 20g
SPEC.: LED	DIM.: 500*8*1.9MM	SERIAL No.: 20240710014
MFR.: EVERFINE	SUR.: 500*8MM	Shielding Angle:

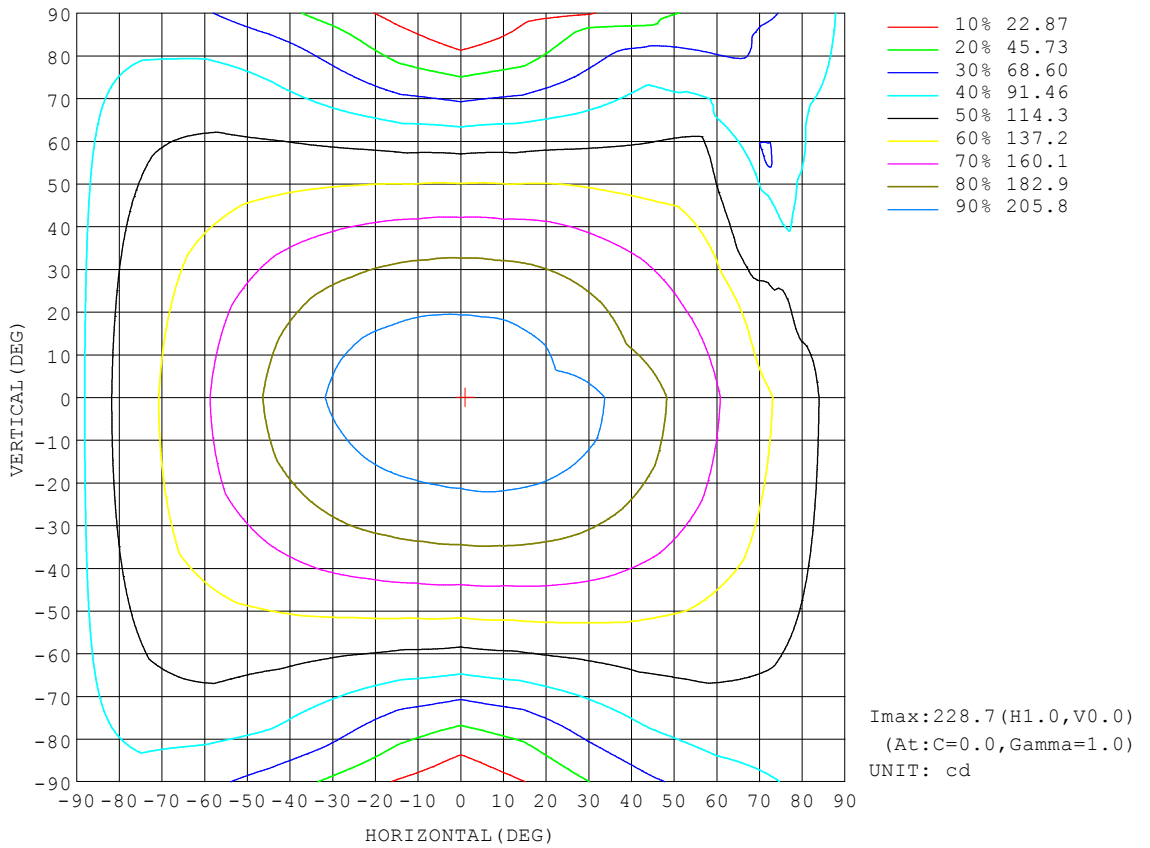
REFLECTANCE										
Ceiling	0.8	0.8	0.8	0.7	0.7	0.7	0.5	0.5	0.5	0
Walls	0.7	0.5	0.3	0.7	0.5	0.3	0.7	0.5	0.3	0
Working plane	0.2	0.2	0.2	0.2	0.2	0.2	0.2	0.2	0.2	0
ROOM INDEX	UTILIZATION FACTORS (PERCENT) $k(RI) \times RCR = 5$									
$k = 0.60$	51	38	31	50	38	30	48	37	30	23
0.80	60	47	39	59	46	39	57	45	38	30
1.00	68	55	47	66	54	46	64	56	46	37
1.25	75	62	54	73	61	53	70	60	52	44
1.50	80	68	59	78	67	59	74	65	57	48
2.00	87	76	68	85	75	67	80	72	65	56
2.50	92	81	74	89	80	73	84	77	70	60
3.00	95	86	79	93	84	78	88	81	75	64
4.00	100	92	86	97	90	84	92	86	81	70
5.00	103	96	90	100	94	88	94	89	85	73
ROOM INDEX	UF(total)									Direct
According to DIN EN 13032-2 2004			Suspended				SHRNOM = 1.25			

C Range: 0 - 360DEG
 C Interval: 15.0DEG
 Test Speed: HIGH
 Temperature: 25.3°C
 Operators: DAMIN
 Test Date: 2024-07-27

γ Range: 0 - 180DEG
 γ Interval: 1.0DEG
 Test System: EVERFINE GO-2000B_V1 SYSTEM V2.00.471
 Humidity: 65.0%
 Test Distance: 4.880m [K=1.0000]
 Remarks:

ISOCANDELA DIAGRAM

NAME: LED Strip	TYPE: Indoor lighting	WEIGHT: 20g
SPEC.: LED	DIM.: 500*8*1.9MM	SERIAL No.: 20240710014
MFR.: EVERFINE	SUR.: 500*8MM	Shielding Angle:



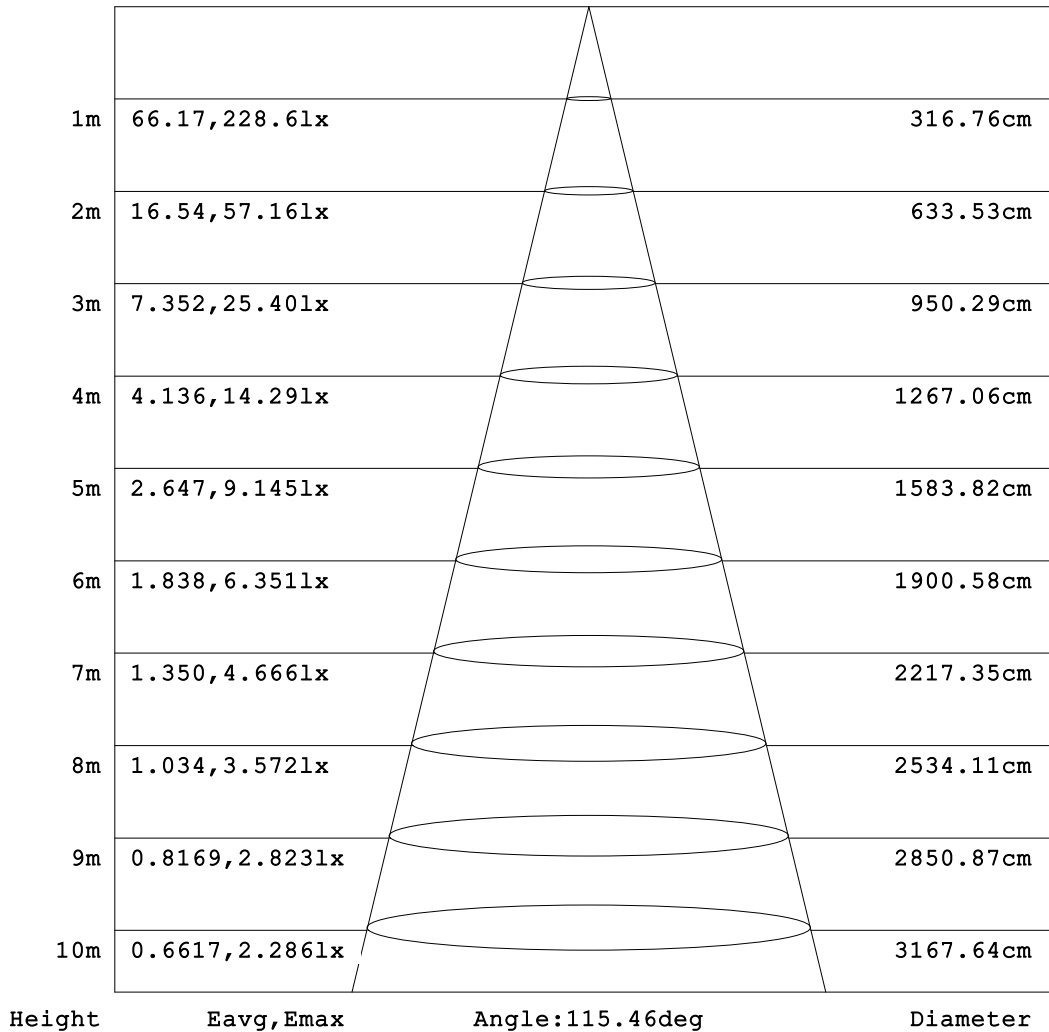
C Range: 0 - 360DEG
 C Interval: 15.0DEG
 Test Speed: HIGH
 Temperature: 25.3°C
 Operators: DAMIN
 Test Date: 2024-07-27

γ Range: 0 - 180DEG
 γ Interval: 1.0DEG
 Test System: EVERFINE GO-2000B_V1 SYSTEM V2.00.471
 Humidity: 65.0%
 Test Distance: 4.880m [K=1.0000]
 Remarks:

AAI Figure

NAME: LED Strip	TYPE: Indoor lighting	WEIGHT: 20g
SPEC.: LED	DIM.: 500*8*1.9MM	SERIAL No.: 20240710014
MFR.: EVERFINE	SUR.: 500*8MM	Shielding Angle:

Flux out:532.4 lm



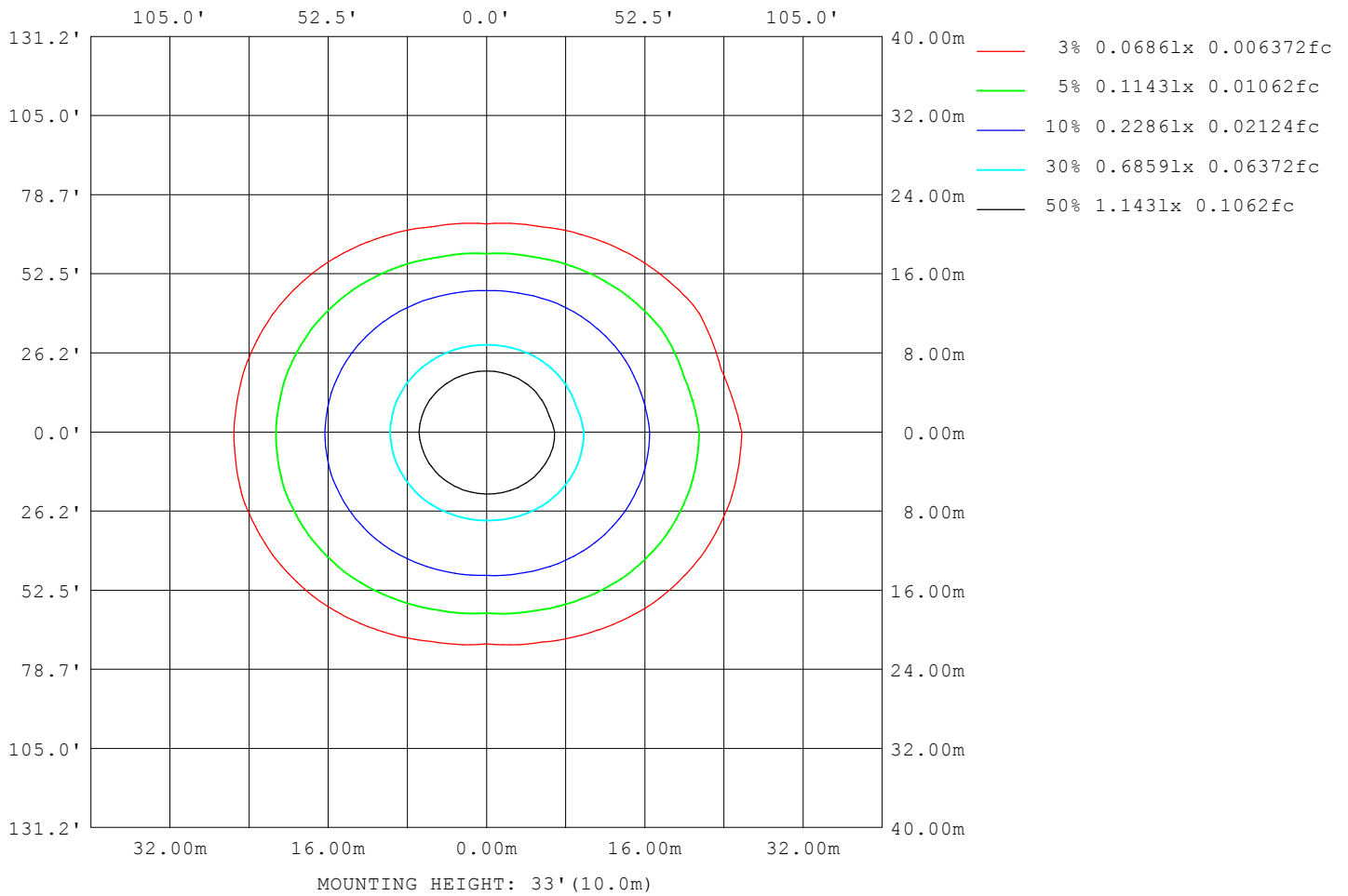
Note: The Curves indicate the illuminated area and the average illumination when the luminaire is at different distance.

C Range: 0 - 360DEG
 C Interval: 15.0DEG
 Test Speed: HIGH
 Temperature: 25.3°C
 Operators: DAMIN
 Test Date: 2024-07-27

γ Range: 0 - 180DEG
 γ Interval: 1.0DEG
 Test System: EVERFINE GO-2000B_V1 SYSTEM V2.00.471
 Humidity: 65.0%
 Test Distance: 4.880m [K=1.0000]
 Remarks:

ISOLUX DIAGRAM

NAME: LED Strip	TYPE: Indoor lighting	WEIGHT: 20g
SPEC.: LED	DIM.: 500*8*1.9MM	SERIAL No.: 20240710014
MFR.: EVERFINE	SUR.: 500*8MM	Shielding Angle:



C Range: 0 - 360DEG
 C Interval: 15.0DEG
 Test Speed: HIGH
 Temperature: 25.3°C
 Operators: DAMIN
 Test Date: 2024-07-27

γ Range: 0 - 180DEG
 γ Interval: 1.0DEG
 Test System: EVERFINE GO-2000B_V1 SYSTEM V2.00.471
 Humidity: 65.0%
 Test Distance: 4.880m [K=1.0000]
 Remarks:

LED Avg.L Report

NAME: LED Strip	TYPE: Indoor lighting	WEIGHT: 20g
SPEC.: LED	DIM.: 500*8*1.9MM	SERIAL No.: 20240710014
MFR.: EVERFINE	SUR.: 500*8MM	Shielding Angle:

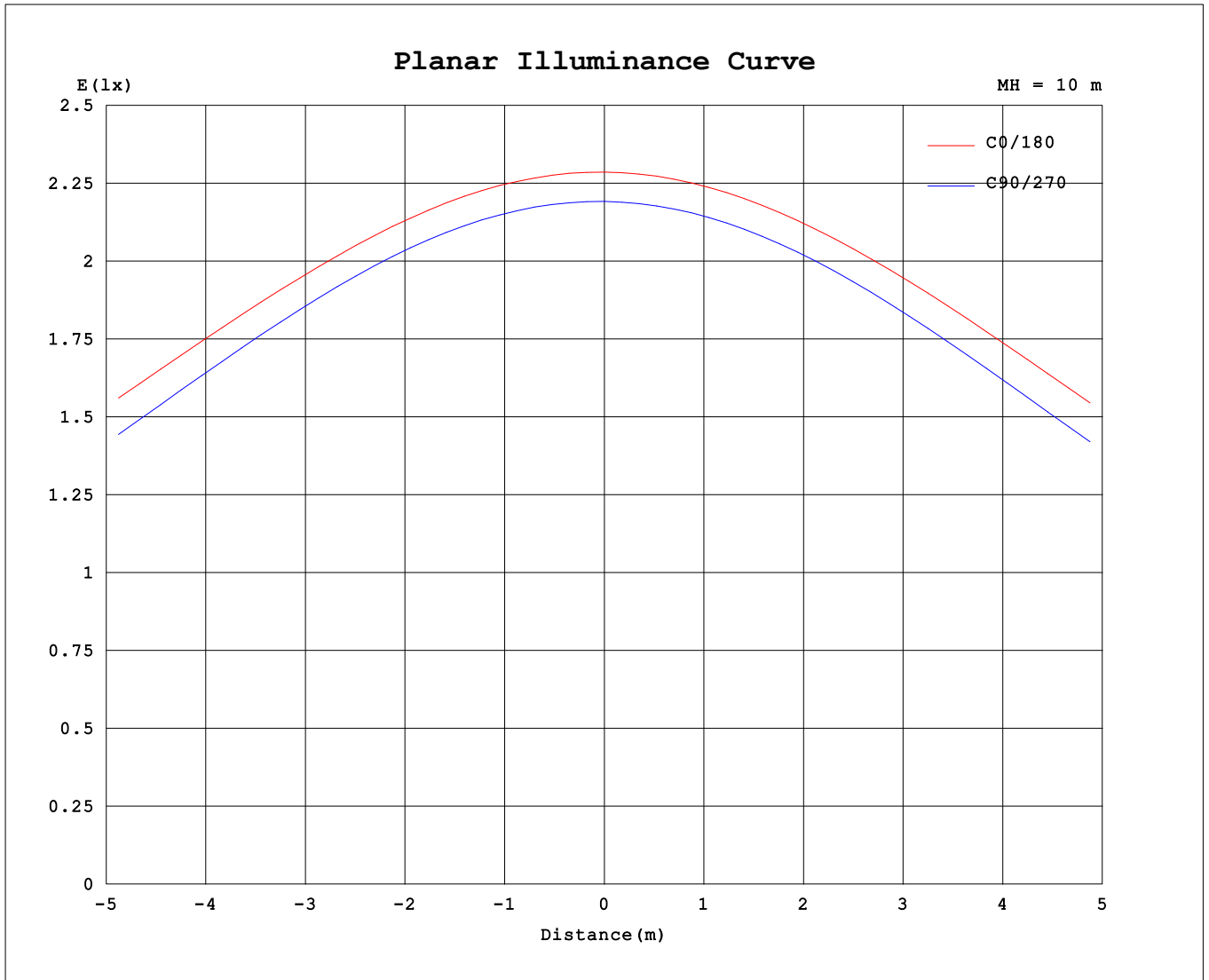
AvgL	cd/m2
L_0~180 (65) av	44424
L_0~180 (75) av	63544
L_0~180 (85) av	154046
L_90~270 (65) av	25967
L_90~270 (75) av	23723
L_90~270 (85) av	22244
L_45 (65) av	36645
L_45 (75) av	49183
L_45 (85) av	108141

Standard: GB/T 29293-2012

C Range: 0 - 360DEG
 C Interval: 15.0DEG
 Test Speed: HIGH
 Temperature:25.3°C
 Operators:DAMIN
 Test Date:2024-07-27

γ Range: 0 - 180DEG
 γ Interval: 1.0DEG
 Test System:EVERFINE GO-2000B_V1 SYSTEM V2.00.471
 Humidity:65.0%
 Test Distance:4.880m [K=1.0000]
 Remarks:

Planar Illuminance Curve



C Range: 0 - 360DEG
 C Interval: 15.0DEG
 Test Speed: HIGH
 Temperature: 25.3°C
 Operators: DAMIN
 Test Date: 2024-07-27

γ Range: 0 - 180DEG
 γ Interval: 1.0DEG
 Test System: EVERFINE GO-2000B_V1 SYSTEM V2.00.471
 Humidity: 65.0%
 Test Distance: 4.880m [K=1.0000]
 Remarks:

LUMINOUS DISTRIBUTION INTENSITY DATA

NAME: LED Strip	TYPE: Indoor lighting	WEIGHT: 20g
SPEC.: LED	DIM.: 500*8*1.9MM	SERIAL No.: 20240710014
MFR.: EVERFINE	SUR.: 500*8MM	Shielding Angle:

Table--1

UNIT: cd

C (DEG) \ γ (DEG)	0	15	30	45	60	75	90	105	120	135	150	165	180	195	210	225	240	255	270
0	229	227	225	223	222	220	219	219	219	220	221	220	229	227	225	223	222	220	219
5	228	227	224	223	221	220	219	218	219	219	220	221	228	226	224	221	220	219	218
10	227	226	223	221	220	218	217	216	217	217	219	220	226	224	221	219	218	216	215
15	224	223	220	218	216	215	213	213	213	214	216	218	223	220	218	215	213	212	211
20	220	220	216	214	211	209	208	207	208	210	212	214	219	216	213	210	208	206	205
25	216	215	212	209	205	203	201	200	202	205	207	210	214	211	208	203	200	198	197
30	211	210	206	202	198	194	192	192	194	198	201	205	208	205	201	196	192	189	188
35	204	203	199	194	189	184	182	182	185	190	194	198	201	198	194	187	182	179	178
40	197	196	191	186	179	173	170	171	175	181	186	191	194	190	185	178	172	167	166
45	188	188	182	176	168	160	157	159	164	171	177	183	185	182	176	167	160	154	152
50	180	179	173	165	155	146	142	145	152	161	168	175	176	173	165	156	147	140	137
55	171	169	163	153	142	131	126	130	139	149	158	166	167	163	155	144	134	124	121
60	162	160	152	141	128	115	109	114	125	138	149	157	158	153	145	132	120	108	104
65	152	150	142	129	113	98.4	90.6	97.5	111	126	139	148	148	144	134	121	105	91.1	85.0
70	143	140	131	117	98.7	81.1	71.5	80.7	98.0	116	130	139	139	134	124	109	91.5	73.9	65.4
75	134	130	121	106	85.3	64.1	52.4	64.5	85.5	105	120	130	130	125	115	98.5	78.6	57.2	45.8
80	124	120	110	94.3	72.9	48.7	34.6	50.4	73.5	94.5	110	120	119	115	105	87.9	66.3	42.1	27.2
85	111	108	97.3	81.4	60.1	35.3	19.3	36.7	59.6	79.4	93.8	104	103	99.4	89.9	74.0	53.8	28.8	11.7
90	95.2	91.7	81.3	65.8	45.6	22.9	6.04	21.3	41.4	60.1	74.5	84.4	84.0	80.1	70.7	55.4	36.5	15.2	1.93
95	75.8	71.6	61.3	45.6	23.0	8.97	1.28	6.99	15.1	29.5	43.1	53.0	54.2	50.3	41.7	26.5	11.5	2.49	1.15
100	40.8	37.5	28.1	19.0	9.83	4.35	1.14	1.34	7.58	12.4	18.1	22.4	20.5	17.9	13.4	7.64	2.96	1.22	1.12
105	18.3	17.0	13.1	8.53	4.69	3.14	1.12	1.14	2.09	7.39	10.0	12.2	9.03	7.72	5.17	2.49	1.44	1.20	1.18
110	8.10	7.36	5.04	3.53	3.48	2.43	1.22	1.20	1.33	3.48	6.87	7.68	3.40	2.80	1.91	1.56	1.37	1.30	1.32
115	2.47	2.26	2.06	2.47	2.77	2.02	1.34	1.32	1.37	1.80	5.06	6.72	1.88	1.84	1.74	1.59	1.49	1.43	1.46
120	2.02	1.96	1.87	1.86	2.23	1.75	1.47	1.46	1.48	1.61	2.66	6.27	1.91	1.86	1.80	1.70	1.62	1.57	1.60
125	1.99	1.98	1.91	1.82	1.89	1.64	1.59	1.58	1.61	1.69	1.98	4.11	1.98	1.95	1.90	1.82	1.75	1.71	1.73
130	2.04	2.05	1.99	1.92	1.83	1.77	1.72	1.71	1.74	1.80	1.86	2.46	2.07	2.04	2.00	1.93	1.87	1.83	1.85
135	2.10	2.12	2.08	2.02	1.93	1.88	1.84	1.84	1.86	1.92	1.96	2.08	2.14	2.11	2.08	2.03	1.98	1.95	1.97
140	2.17	2.20	2.16	2.11	2.04	2.00	1.96	1.97	1.98	2.02	2.07	2.05	2.21	2.19	2.17	2.12	2.09	2.07	2.09
145	2.24	2.28	2.24	2.20	2.14	2.11	2.09	2.09	2.09	2.13	2.15	2.15	2.29	2.27	2.25	2.21	2.20	2.18	2.20
150	2.32	2.36	2.33	2.30	2.24	2.23	2.20	2.20	2.20	2.23	2.24	2.25	2.36	2.34	2.34	2.31	2.30	2.29	2.31
155	2.41	2.44	2.41	2.39	2.34	2.33	2.32	2.32	2.31	2.33	2.33	2.39	2.45	2.42	2.42	2.40	2.40	2.39	2.41
160	2.50	2.52	2.50	2.48	2.44	2.44	2.42	2.43	2.42	2.42	2.41	2.49	2.54	2.50	2.50	2.49	2.49	2.49	2.50
165	2.59	2.60	2.58	2.56	2.53	2.56	2.55	2.56	2.53	2.52	2.50	2.57	2.62	2.58	2.58	2.57	2.58	2.57	2.59
170	2.67	2.68	2.65	2.65	2.63	2.65	2.64	2.66	2.65	2.64	2.59	2.64	2.69	2.65	2.66	2.65	2.66	2.65	2.67
175	2.74	2.74	2.71	2.72	2.70	2.72	2.71	2.73	2.73	2.73	2.70	2.71	2.75	2.72	2.73	2.71	2.72	2.71	2.72
180	2.79	2.77	2.76	2.76	2.75	2.75	2.76	2.77	2.79	2.78	2.77	2.82	2.78	2.77	2.77	2.75	2.75	2.75	2.76

C Range: 0 - 360DEG
 C Interval: 15.0DEG
 Test Speed: HIGH
 Temperature: 25.3°C
 Operators: DAMIN
 Test Date: 2024-07-27

γ Range: 0 - 180DEG
 γ Interval: 1.0DEG
 Test System: EVERFINE GO-2000B_V1 SYSTEM V2.00.471
 Humidity: 65.0%
 Test Distance: 4.880m [K=1.0000]
 Remarks:

LUMINOUS DISTRIBUTION INTENSITY DATA

NAME: LED Strip	TYPE: Indoor lighting	WEIGHT: 20g
SPEC.: LED	DIM.: 500*8*1.9MM	SERIAL No.: 20240710014
MFR.: EVERFINE	SUR.: 500*8MM	Shielding Angle:

Table--2

UNIT: cd

C (DEG) \ γ (DEG)	285	300	315	330	345														
0	219	219	220	221	220														
5	218	218	219	220	219														
10	215	216	216	217	216														
15	211	212	213	214	212														
20	205	207	208	209	208														
25	198	200	202	204	204														
30	189	192	195	197	199														
35	179	183	186	190	192														
40	167	172	177	181	184														
45	154	161	166	172	176														
50	140	148	155	163	169														
55	124	134	143	153	161														
60	108	119	131	143	151														
65	91.2	104	119	134	137														
70	73.4	90.0	108	125	110														
75	55.6	76.6	98.1	113	93.4														
80	39.6	64.9	87.0	90.6	64.3														
85	27.3	53.8	66.8	70.0	73.3														
90	17.2	20.9	40.7	52.8	69.3														
95	4.34	24.0	45.5	62.5	63.2														
100	1.48	6.09	15.7	30.0	39.6														
105	1.40	2.16	6.93	14.0	18.9														
110	1.47	1.99	3.44	6.90	10.7														
115	1.64	2.28	3.39	4.57	6.63														
120	1.79	2.60	3.67	4.71	6.24														
125	1.93	2.82	3.89	4.80	6.06														
130	2.07	2.97	3.98	4.77	5.45														
135	2.20	3.02	3.99	4.56	4.20														
140	2.32	3.07	3.87	4.15	3.05														
145	2.43	3.02	3.63	3.58	2.62														
150	2.50	2.97	3.31	2.99	2.59														
155	2.55	2.90	3.00	2.64	2.62														
160	2.59	2.80	2.75	2.62	2.66														
165	2.63	2.73	2.68	2.67	2.71														
170	2.67	2.71	2.70	2.72	2.77														
175	2.73	2.76	2.74	2.76	2.82														
180	2.76	2.81	2.77	2.77	2.83														

C Range: 0 - 360DEG
 C Interval: 15.0DEG
 Test Speed: HIGH
 Temperature:25.3°C
 Operators:DAMIN
 Test Date:2024-07-27

γ Range: 0 - 180DEG
 γ Interval: 1.0DEG
 Test System:EVERFINE GO-2000B_V1 SYSTEM V2.00.471
 Humidity:65.0%
 Test Distance:4.880m [K=1.0000]
 Remarks: