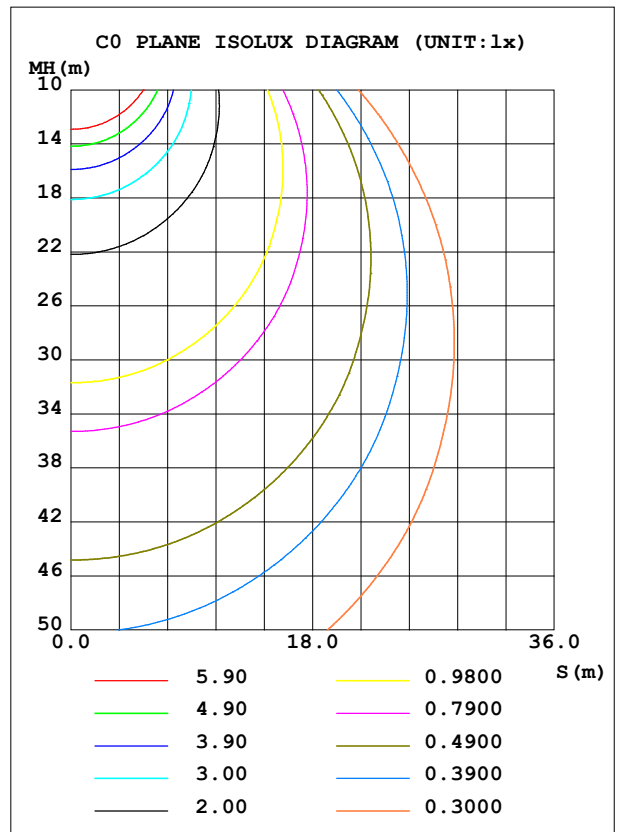
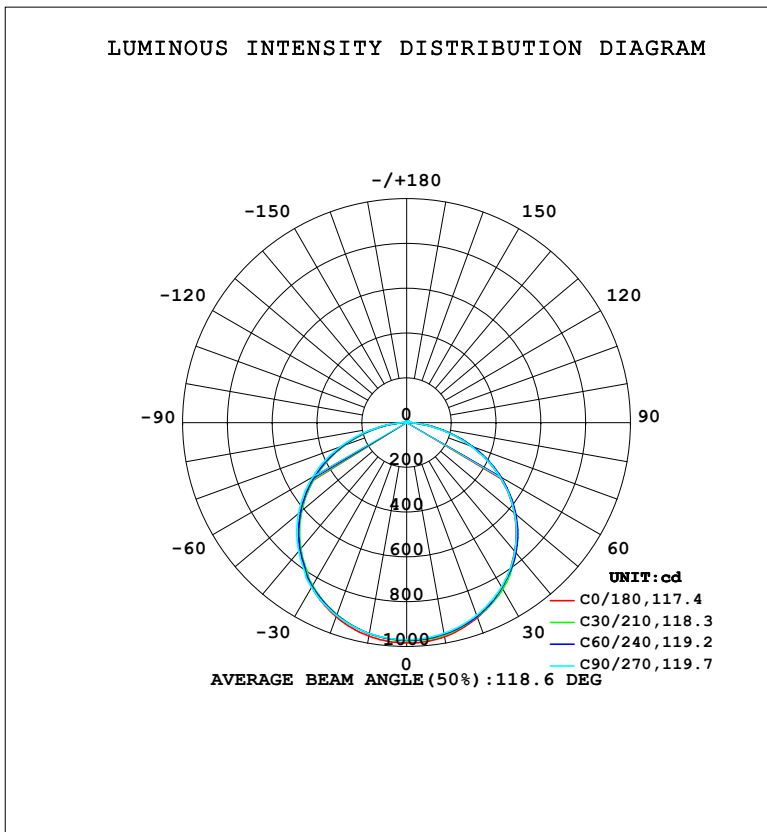


LUMINAIRE PHOTOMETRIC TEST REPORT

NAME: LED Strip	TYPE: Indoor lighting	WEIGHT: 20g
SPEC.: SCOB LED	DIM.: 1000*8*1.9MM	SERIAL No.: 20231114004
MFR.: EVERFINE	SUR.: 1000*8MM	Shielding Angle:

DATA OF LAMP		PHOTOMETRIC DATA			
8WW240B-21000EE)-UR-JK-CV-HE-EP-GEL 1M		Imax (cd)	984.3	S/MH (C0/180)	1.28
NOMINAL POWER (W)	19.3597	LOR (%)	100.0	S/MH (C90/270)	1.30
RATED VOLTAGE (V)	DC 24V	TOTAL FLUX (lm)	3017.5	η UP, DN (C0-180)	0.7,49.1
NOMINAL FLUX (lm)	3017.47	CIE CLASS	DIRECT	η UP, DN (C180-360)	0.7,49.5
LAMPS INSIDE	1	η up (%)	1.4	CIBSE SHR NOM	1.25
TEST VOLTAGE (V)	DC 24V	η down (%)	98.6	CIBSE SHR MAX	1.35



C Range: 0 - 360DEG
 C Interval: 15.0DEG
 Test Speed: HIGH
 Temperature: 25.3°C
 Operators: DAMIN
 Test Date: 2023-11-14

γ Range: 0 - 180DEG
 γ Interval: 1.0DEG
 Test System: EVERFINE GO-2000B_V1 SYSTEM V2.00.471
 Humidity: 65.0%
 Test Distance: 4.880m [K=1.0000]
 Remarks:

ZONAL FLUX DIAGRAM

ZONAL FLUX DIAGRAM:

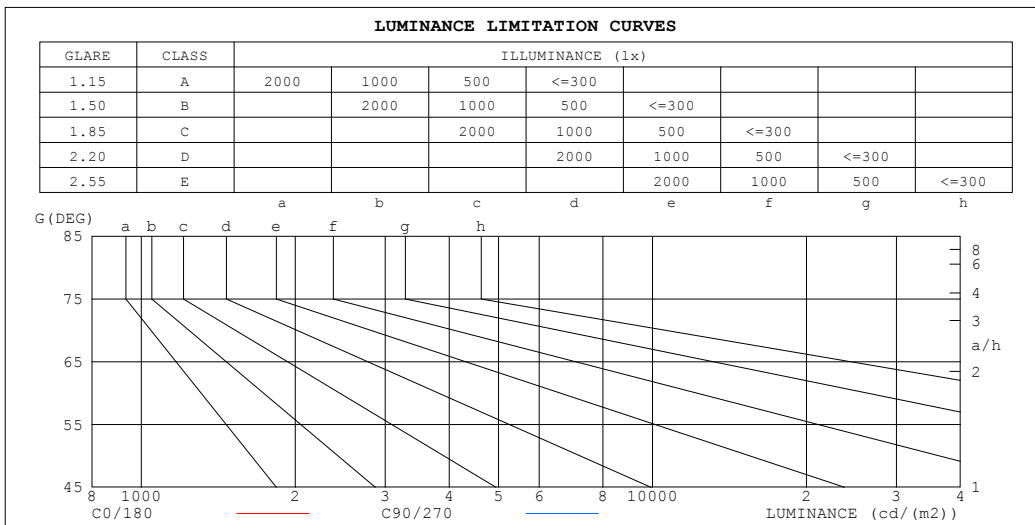
γ	C0	C45	C90	C135	C180	C225	C270	C315	γ	Φ zone	Φ total	%lum,lamp
10	971.1	961.2	955.5	955.3	968.0	954.2	956.3	963.0	0- 10	92.33	92.33	3.06,3.06
20	925.9	922.9	914.9	910.7	922.3	909.7	916.3	924.6	10- 20	266.2	358.6	11.9,11.9
30	853.9	856.2	847.0	839.1	848.1	838.2	849.6	856.6	20- 30	408.9	767.4	25.4,25.4
40	750.4	754.8	752.0	734.4	740.6	740.4	750.0	765.3	30- 40	501.4	1269	42.1,42.1
50	627.8	631.4	629.4	610.2	614.5	616.8	630.5	639.5	40- 50	531.9	1801	59.7,59.7
60	478.4	484.3	480.4	459.7	464.2	468.4	484.9	492.5	50- 60	494.5	2295	76.1,76.1
70	304.9	313.5	304.3	290.3	294.2	296.2	315.4	319.3	60- 70	388.4	2684	88.9,88.9
80	129.9	134.7	126.0	116.1	121.3	123.5	134.5	140.7	70- 80	227.4	2911	96.5,96.5
90	11.96	12.73	8.577	8.019	8.074	9.566	9.306	16.16	80- 90	65.04	2976	98.6,98.6
100	3.856	3.777	3.836	3.858	3.949	4.206	3.958	4.178	90-100	5.737	2982	98.8,98.8
110	4.538	4.679	4.955	4.765	4.895	5.017	5.124	4.922	100-110	4.599	2986	99,99
120	5.656	5.741	6.137	5.912	5.928	6.132	6.317	6.007	110-120	5.361	2992	99.1,99.1
130	6.800	6.881	7.260	7.077	7.050	7.268	7.424	7.090	120-130	5.850	2998	99.3,99.3
140	7.933	8.013	8.330	8.193	8.138	8.343	8.466	8.157	130-140	5.915	3004	99.5,99.5
150	9.001	9.075	9.322	9.216	9.151	9.315	9.410	9.152	140-150	5.457	3009	99.7,99.7
160	10.07	10.02	10.18	10.12	10.14	10.17	10.23	10.04	150-160	4.463	3013	99.9,99.9
170	10.93	10.81	10.88	10.88	11.00	10.91	10.91	10.82	160-170	2.967	3016	100,100
180	11.43	11.30	11.29	11.28	11.47	11.30	11.30	11.29	170-180	1.056	3017	100,100
DEG	LUMINOUS INTENSITY:cd									UNIT:lm		

C Range: 0 - 360DEG
 C Interval: 15.0DEG
 Test Speed: HIGH
 Temperature:25.3°C
 Operators:DAMIN
 Test Date:2023-11-14

γ Range: 0 - 180DEG
 γ Interval: 1.0DEG
 Test System:EVERFINE GO-2000B_V1 SYSTEM V2.00.471
 Humidity:65.0%
 Test Distance:4.880m [K=1.0000]
 Remarks:

LUMINANCE LIMITATION CURVES

NAME: LED Strip	TYPE: Indoor lighting	WEIGHT: 20g
SPEC.: SCOB LED	DIM.: 1000*8*1.9MM	SERIAL No.: 20231114004
MFR.: EVERFINE	SUR.: 1000*8MM	Shielding Angle:



LUMINANCE cd/(m2)		
G (DEG)	C0/180	C90/270
85	79906	74766
80	93525	90717
75	104509	103247
70	111449	111199
65	117143	117218
60	119598	120090
55	121298	121646
50	122080	122391
45	122358	122706

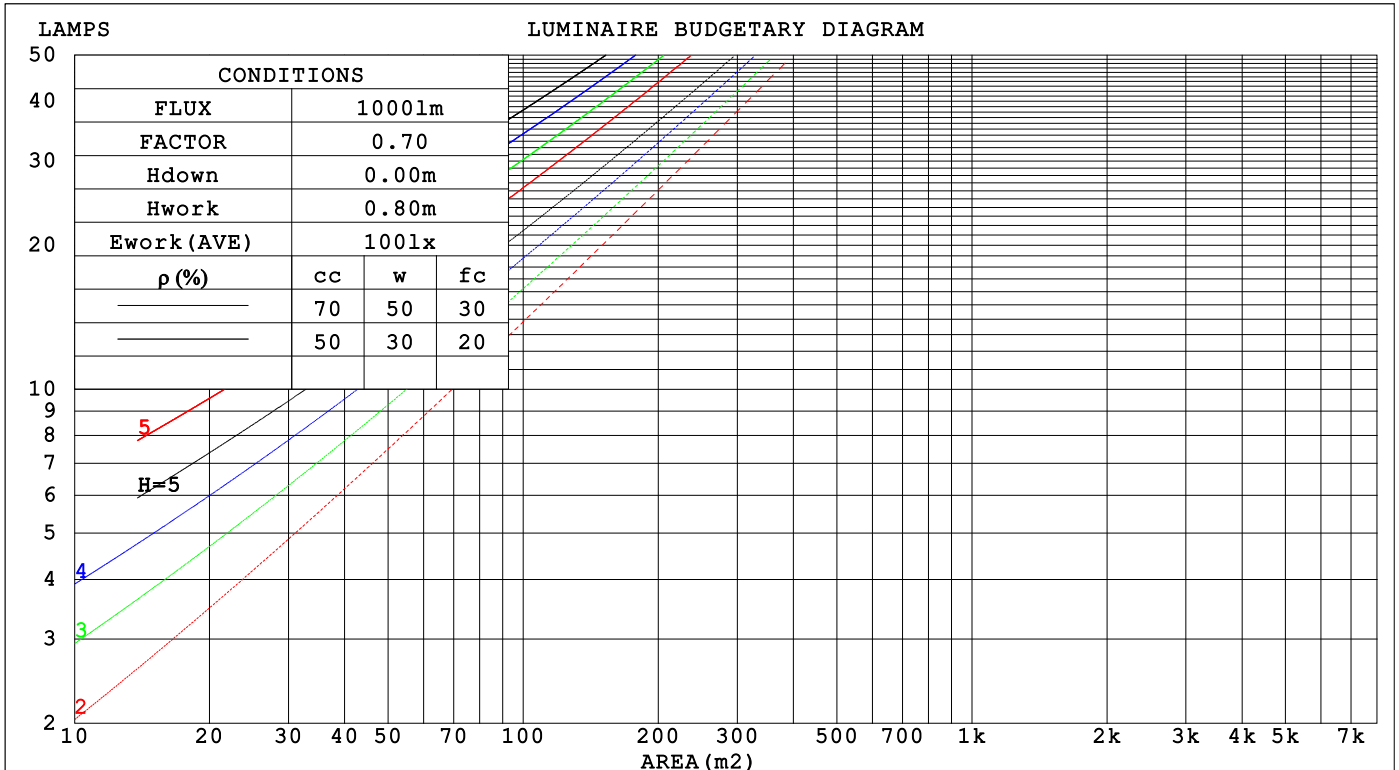
C Range: 0 - 360DEG
 C Interval: 15.0DEG
 Test Speed: HIGH
 Temperature: 25.3°C
 Operators: DAMIN
 Test Date: 2023-11-14

γ Range: 0 - 180DEG
 γ Interval: 1.0DEG
 Test System: EVERFINE GO-2000B_V1 SYSTEM V2.00.471
 Humidity: 65.0%
 Test Distance: 4.880m [K=1.0000]
 Remarks:

CU AND LUMINAIRE BUDGETARY ESTIMATE DIAGRAM

NAME: LED Strip	TYPE: Indoor lighting	WEIGHT: 20g
SPEC.: SCOB LED	DIM.: 1000*8*1.9MM	SERIAL No.: 20231114004
MFR.: EVERFINE	SUR.: 1000*8MM	Shielding Angle:

pcc	80%			70%			50%			30%			10%			0
	50%	30%	10%	50%	30%	10%	50%	30%	10%	50%	30%	10%	50%	30%	10%	0
p _w	0															
p _{fc}	0															
RCR	RCR:Room Cavity Ratio Coefficients of Utilization(CU)															
0.0	1.19	1.19	1.19	1.16	1.16	1.16	1.10	1.10	1.10	1.05	1.05	1.05	1.01	1.01	1.01	.99
1.0	1.03	.99	.95	1.01	.97	.93	.96	.93	.90	.92	.89	.87	.88	.86	.84	.82
2.0	.89	.82	.77	.87	.81	.75	.84	.78	.73	.80	.76	.72	.77	.73	.70	.68
3.0	.78	.70	.63	.77	.69	.62	.73	.67	.61	.70	.65	.60	.68	.63	.59	.56
4.0	.69	.60	.53	.68	.59	.53	.65	.58	.52	.62	.56	.51	.60	.55	.50	.48
5.0	.62	.52	.46	.60	.52	.45	.58	.50	.45	.56	.49	.44	.54	.48	.43	.41
6.0	.55	.46	.40	.54	.46	.39	.52	.45	.39	.50	.44	.38	.49	.43	.38	.36
7.0	.50	.41	.35	.49	.41	.35	.47	.40	.34	.46	.39	.34	.44	.38	.34	.32
8.0	.46	.37	.31	.45	.37	.31	.43	.36	.31	.42	.35	.30	.41	.35	.30	.28
9.0	.42	.33	.28	.41	.33	.28	.40	.33	.27	.39	.32	.27	.38	.31	.27	.25
10.0	.38	.30	.25	.38	.30	.25	.37	.30	.25	.36	.29	.25	.35	.29	.25	.23



C Range: 0 - 360DEG
 C Interval: 15.0DEG
 Test Speed: HIGH
 Temperature: 25.3°C
 Operators: DAMIN
 Test Date: 2023-11-14

γ Range: 0 - 180DEG
 γ Interval: 1.0DEG
 Test System: EVERFINE GO-2000B_V1 SYSTEM V2.00.471
 Humidity: 65.0%
 Test Distance: 4.880m [K=1.0000]
 Remarks:

WEC AND CCEC

NAME: LED Strip	TYPE: Indoor lighting	WEIGHT: 20g
SPEC.: SCOB LED	DIM.: 1000*8*1.9MM	SERIAL No.: 20231114004
MFR.: EVERFINE	SUR.: 1000*8MM	Shielding Angle:

ρ_{cc}	80%			70%			50%			30%			10%			0
ρ_w	50%	30%	10%	50%	30%	10%	50%	30%	10%	50%	30%	10%	50%	30%	10%	0
ρ_{fc}	20%			20%			20%			20%			20%			0
RCR	RCR:Room Cavity Ratio						Wall Exitance Coefficients(WEC)									
0.0																
1.0	.318	.181	.057	.311	.177	.056	.297	.170	.054	.284	.164	.053	.272	.158	.051	
2.0	.298	.163	.050	.292	.161	.049	.279	.155	.048	.268	.150	.047	.257	.145	.046	
3.0	.275	.146	.044	.269	.144	.043	.258	.140	.043	.248	.136	.042	.238	.132	.041	
4.0	.253	.132	.039	.248	.130	.038	.238	.126	.038	.229	.123	.037	.221	.120	.036	
5.0	.234	.119	.034	.229	.118	.034	.220	.115	.034	.212	.112	.033	.204	.109	.033	
6.0	.216	.108	.031	.212	.107	.031	.204	.105	.030	.197	.102	.030	.190	.100	.030	
7.0	.201	.099	.028	.197	.098	.028	.190	.096	.028	.184	.094	.027	.178	.092	.027	
8.0	.188	.092	.026	.184	.091	.026	.178	.089	.025	.172	.087	.025	.166	.085	.025	
9.0	.176	.085	.024	.173	.084	.024	.167	.083	.023	.162	.081	.023	.157	.079	.023	
10.0	.165	.079	.022	.162	.078	.022	.157	.077	.022	.152	.076	.021	.148	.074	.021	

ρ_{cc}	80%			70%			50%			30%			10%			0
ρ_w	50%	30%	10%	50%	30%	10%	50%	30%	10%	50%	30%	10%	50%	30%	10%	0
ρ_{fc}	20%			20%			20%			20%			20%			0
RCR	RCR:Room Cavity Ratio						Ceiling Cavity Exitance Coefficients(CCEC)									
0.0	.201	.201	.201	.172	.172	.172	.117	.117	.117	.067	.067	.067	.022	.022	.022	
1.0	.191	.167	.144	.164	.143	.124	.112	.098	.086	.064	.057	.050	.021	.018	.016	
2.0	.184	.142	.108	.157	.123	.093	.108	.085	.065	.062	.049	.038	.020	.016	.012	
3.0	.176	.125	.084	.151	.108	.073	.104	.075	.051	.060	.044	.030	.019	.014	.010	
4.0	.169	.112	.068	.145	.097	.059	.099	.067	.042	.058	.039	.025	.019	.013	.008	
5.0	.161	.101	.057	.138	.088	.050	.095	.061	.035	.055	.036	.021	.018	.012	.007	
6.0	.154	.093	.050	.132	.081	.043	.091	.056	.031	.053	.033	.018	.017	.011	.006	
7.0	.147	.086	.044	.127	.075	.038	.087	.052	.027	.051	.031	.016	.016	.010	.005	
8.0	.141	.081	.039	.121	.070	.034	.084	.049	.024	.049	.029	.014	.016	.009	.005	
9.0	.134	.076	.036	.116	.066	.031	.080	.046	.022	.047	.027	.013	.015	.009	.004	
10.0	.129	.071	.033	.111	.062	.029	.077	.044	.021	.045	.026	.012	.015	.008	.004	

C Range: 0 - 360DEG
 C Interval: 15.0DEG
 Test Speed: HIGH
 Temperature:25.3°C
 Operators:DAMIN
 Test Date:2023-11-14

γ Range: 0 - 180DEG
 γ Interval: 1.0DEG
 Test System:EVERFINE GO-2000B_V1 SYSTEM V2.00.471
 Humidity:65.0%
 Test Distance:4.880m [K=1.0000]
 Remarks:

UGR(Unified Glare Rating) Table

NAME: LED Strip		TYPE: Indoor lighting					WEIGHT: 20g					
SPEC.: SCOB LED		DIM.: 1000*8*1.9MM					SERIAL No.: 20231114004					
MFR.: EVERFINE		SUR.: 1000*8MM					Shielding Angle:					
ceiling/cavity		0.7	0.7	0.5	0.5	0.3	0.7	0.7	0.5	0.5	0.3	
walls		0.5	0.3	0.5	0.3	0.3	0.5	0.3	0.5	0.3	0.3	
working plane		0.2	0.2	0.2	0.2	0.2	0.2	0.2	0.2	0.2	0.2	
Room dimensions		Viewed crosswise					Viewed endwise					
x = 2H y = 2H		25.8	27.3	26.1	27.5	27.8	25.8	27.3	26.1	27.6	27.8	
	3H	27.4	28.8	27.7	29.1	29.3	27.4	28.8	27.8	29.1	29.4	
	4H	28.0	29.4	28.4	29.7	29.9	28.1	29.4	28.4	29.7	30.0	
	6H	28.5	29.8	28.8	30.1	30.4	28.5	29.8	28.9	30.1	30.4	
	8H	28.6	29.9	29.0	30.2	30.5	28.6	29.9	29.0	30.2	30.5	
	12H	28.7	29.9	29.1	30.2	30.5	28.7	29.9	29.1	30.2	30.5	
	4H	2H	26.4	27.8	26.8	28.1	28.3	26.5	27.8	26.8	28.1	28.4
		3H	28.2	29.4	28.6	29.7	30.1	28.3	29.4	28.6	29.8	30.1
		4H	29.0	30.1	29.4	30.4	30.8	29.0	30.1	29.4	30.5	30.8
		6H	29.6	30.5	30.0	30.9	31.3	29.6	30.6	30.0	30.9	31.3
		8H	29.8	30.7	30.2	31.1	31.5	29.8	30.7	30.2	31.1	31.5
		12H	29.9	30.7	30.4	31.1	31.6	29.9	30.7	30.3	31.1	31.6
	8H	4H	29.3	30.2	29.7	30.6	31.0	29.3	30.2	29.8	30.6	31.0
		6H	30.0	30.8	30.5	31.2	31.7	30.0	30.8	30.5	31.2	31.7
		8H	30.3	31.0	30.8	31.4	31.9	30.3	31.0	30.8	31.4	31.9
		12H	30.5	31.1	31.0	31.6	32.1	30.5	31.1	31.0	31.5	32.1
	12H	4H	29.3	30.1	29.8	30.5	31.0	29.3	30.2	29.8	30.6	31.0
		6H	30.1	30.8	30.6	31.2	31.7	30.1	30.8	30.6	31.2	31.7
		8H	30.4	31.0	30.9	31.5	32.0	30.4	31.0	30.9	31.5	32.0
Variations with the observer position at spacings(CIE Pub.117):												
S = 1.0H		+ 0.1 / - 0.2					+ 0.1 / - 0.2					
	1.5H	+ 0.2 / - 0.3					+ 0.2 / - 0.3					
	2.0H	+ 0.2 / - 0.4					+ 0.2 / - 0.4					

CIE Pub.117, 3017 lm Total Lamp Luminous Flux Correct (8log(F/F0) = 3.8)
 Area: 0.008 m2

C Range: 0 - 360DEG
 C Interval: 15.0DEG
 Test Speed: HIGH
 Temperature:25.3°C
 Operators:DAMIN
 Test Date:2023-11-14

γ Range: 0 - 180DEG
 γ Interval: 1.0DEG
 Test System:EVERFINE GO-2000B_V1 SYSTEM V2.00.471
 Humidity:65.0%
 Test Distance:4.880m [K=1.0000]
 Remarks:

UTILIZATION FACTORS TABLE

NAME: LED Strip	TYPE: Indoor lighting	WEIGHT: 20g
SPEC.: SCOB LED	DIM.: 1000*8*1.9MM	SERIAL No.: 20231114004
MFR.: EVERFINE	SUR.: 1000*8MM	Shielding Angle:

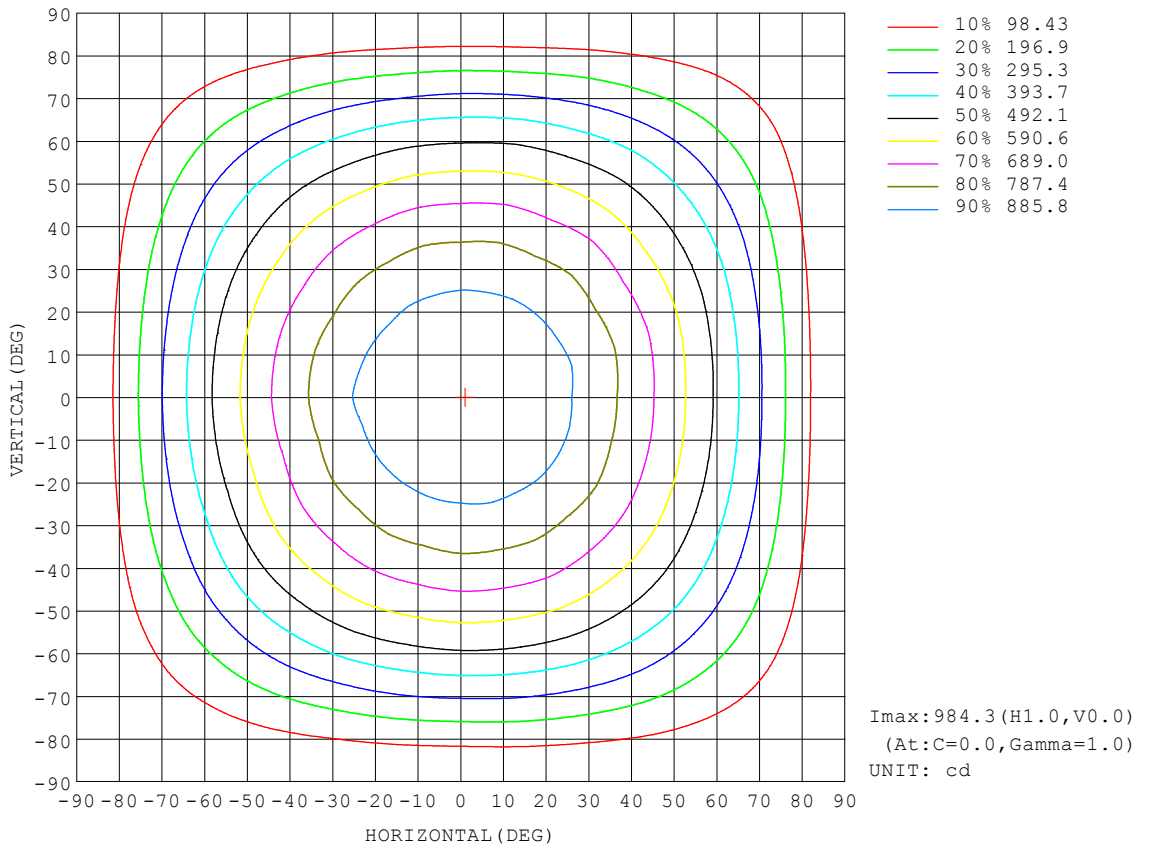
REFLECTANCE										
Ceiling	0.8	0.8	0.8	0.7	0.7	0.7	0.5	0.5	0.5	0
Walls	0.7	0.5	0.3	0.7	0.5	0.3	0.7	0.5	0.3	0
Working plane	0.2	0.2	0.2	0.2	0.2	0.2	0.2	0.2	0.2	0
ROOM INDEX	UTILIZATION FACTORS (PERCENT) $k(RI) \times RCR = 5$									
$k = 0.60$	56	44	37	55	44	37	54	43	37	30
0.80	66	54	47	65	54	46	63	53	46	39
1.00	74	63	56	73	62	55	71	64	55	47
1.25	82	71	63	80	70	63	77	68	62	54
1.50	87	77	69	85	76	69	82	74	68	60
2.00	94	85	78	92	84	77	88	81	76	67
2.50	98	90	83	96	88	83	92	85	80	72
3.00	101	94	88	99	92	87	95	89	85	76
4.00	105	99	95	103	98	93	98	94	90	81
5.00	108	103	99	105	101	97	101	97	94	84
ROOM INDEX	UF(total)									Direct
According to DIN EN 13032-2 2004			Suspended				SHRNOM = 1.25			

C Range: 0 - 360DEG
 C Interval: 15.0DEG
 Test Speed: HIGH
 Temperature: 25.3°C
 Operators: DAMIN
 Test Date: 2023-11-14

γ Range: 0 - 180DEG
 γ Interval: 1.0DEG
 Test System: EVERFINE GO-2000B_V1 SYSTEM V2.00.471
 Humidity: 65.0%
 Test Distance: 4.880m [K=1.0000]
 Remarks:

ISOCANDELA DIAGRAM

NAME: LED Strip	TYPE: Indoor lighting	WEIGHT: 20g
SPEC.: SCOB LED	DIM.: 1000*8*1.9MM	SERIAL No.: 20231114004
MFR.: EVERFINE	SUR.: 1000*8MM	Shielding Angle:

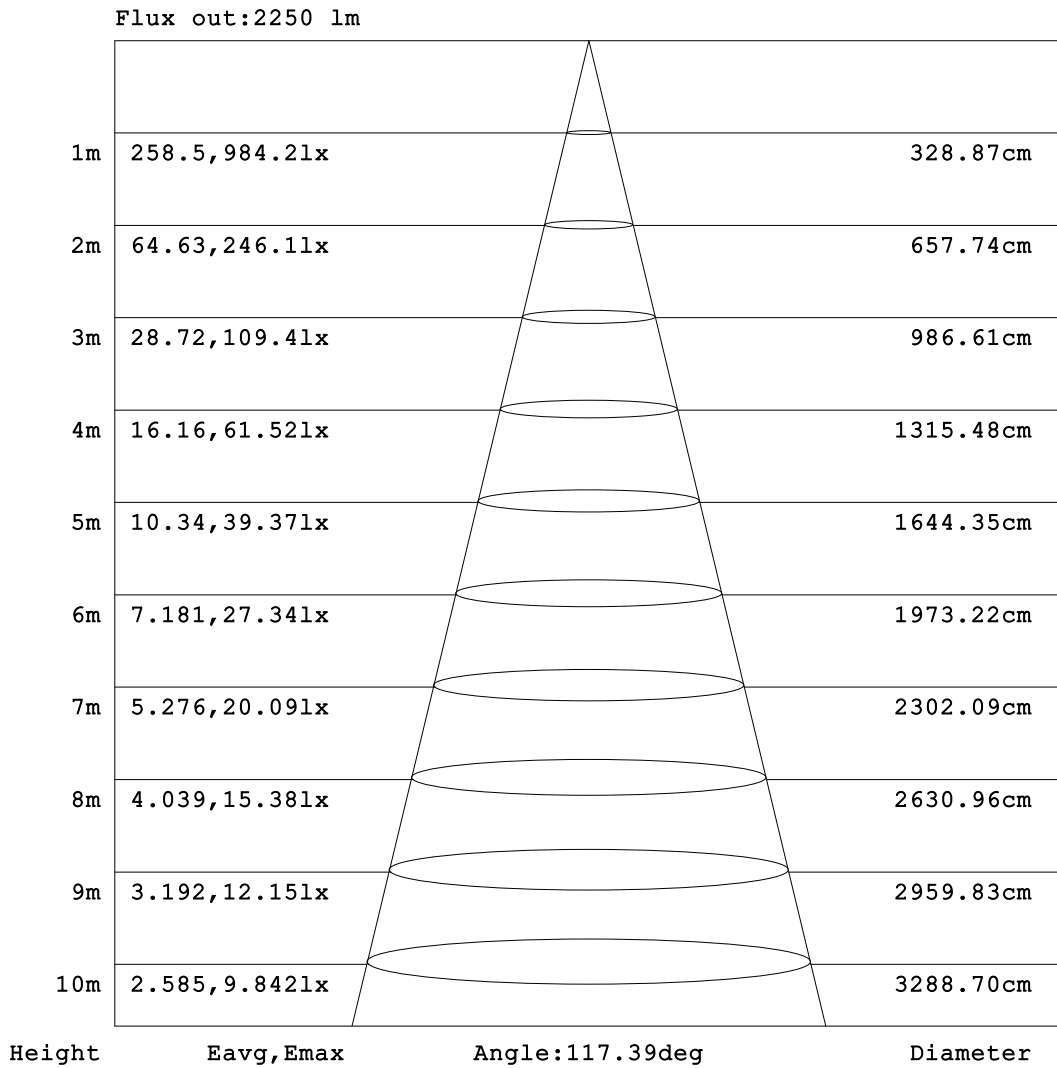


C Range: 0 - 360DEG
 C Interval: 15.0DEG
 Test Speed: HIGH
 Temperature:25.3°C
 Operators:DAMIN
 Test Date:2023-11-14

γ Range: 0 - 180DEG
 γ Interval: 1.0DEG
 Test System:EVERFINE GO-2000B_V1 SYSTEM V2.00.471
 Humidity:65.0%
 Test Distance:4.880m [K=1.0000]
 Remarks:

AAI Figure

NAME: LED Strip	TYPE: Indoor lighting	WEIGHT: 20g
SPEC.: SCOB LED	DIM.: 1000*8*1.9MM	SERIAL No.: 20231114004
MFR.: EVERFINE	SUR.: 1000*8MM	Shielding Angle:



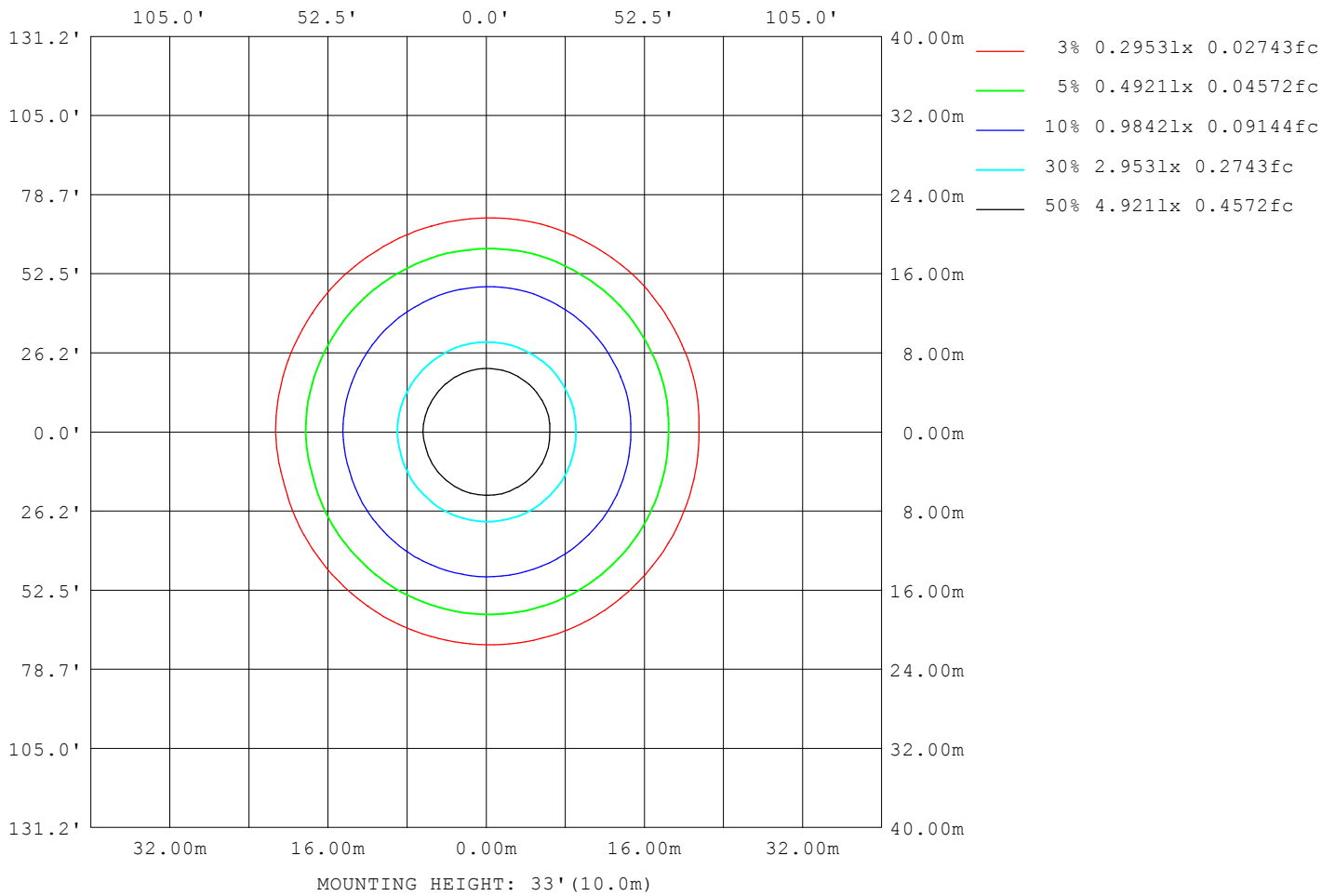
Note: The Curves indicate the illuminated area and the average illumination when the luminaire is at different distance.

C Range: 0 - 360DEG
 C Interval: 15.0DEG
 Test Speed: HIGH
 Temperature: 25.3°C
 Operators: DAMIN
 Test Date: 2023-11-14

γ Range: 0 - 180DEG
 γ Interval: 1.0DEG
 Test System: EVERFINE GO-2000B_V1 SYSTEM V2.00.471
 Humidity: 65.0%
 Test Distance: 4.880m [K=1.0000]
 Remarks:

ISOLUX DIAGRAM

NAME: LED Strip	TYPE: Indoor lighting	WEIGHT: 20g
SPEC.: SCOB LED	DIM.: 1000*8*1.9MM	SERIAL No.: 20231114004
MFR.: EVERFINE	SUR.: 1000*8MM	Shielding Angle:



C Range: 0 - 360DEG
 C Interval: 15.0DEG
 Test Speed: HIGH
 Temperature: 25.3°C
 Operators: DAMIN
 Test Date: 2023-11-14

γ Range: 0 - 180DEG
 γ Interval: 1.0DEG
 Test System: EVERFINE GO-2000B_V1 SYSTEM V2.00.471
 Humidity: 65.0%
 Test Distance: 4.880m [K=1.0000]
 Remarks:

LED Avg.L Report

NAME: LED Strip	TYPE: Indoor lighting	WEIGHT: 20g
SPEC.: SCOB LED	DIM.: 1000*8*1.9MM	SERIAL No.: 20231114004
MFR.: EVERFINE	SUR.: 1000*8MM	Shielding Angle:

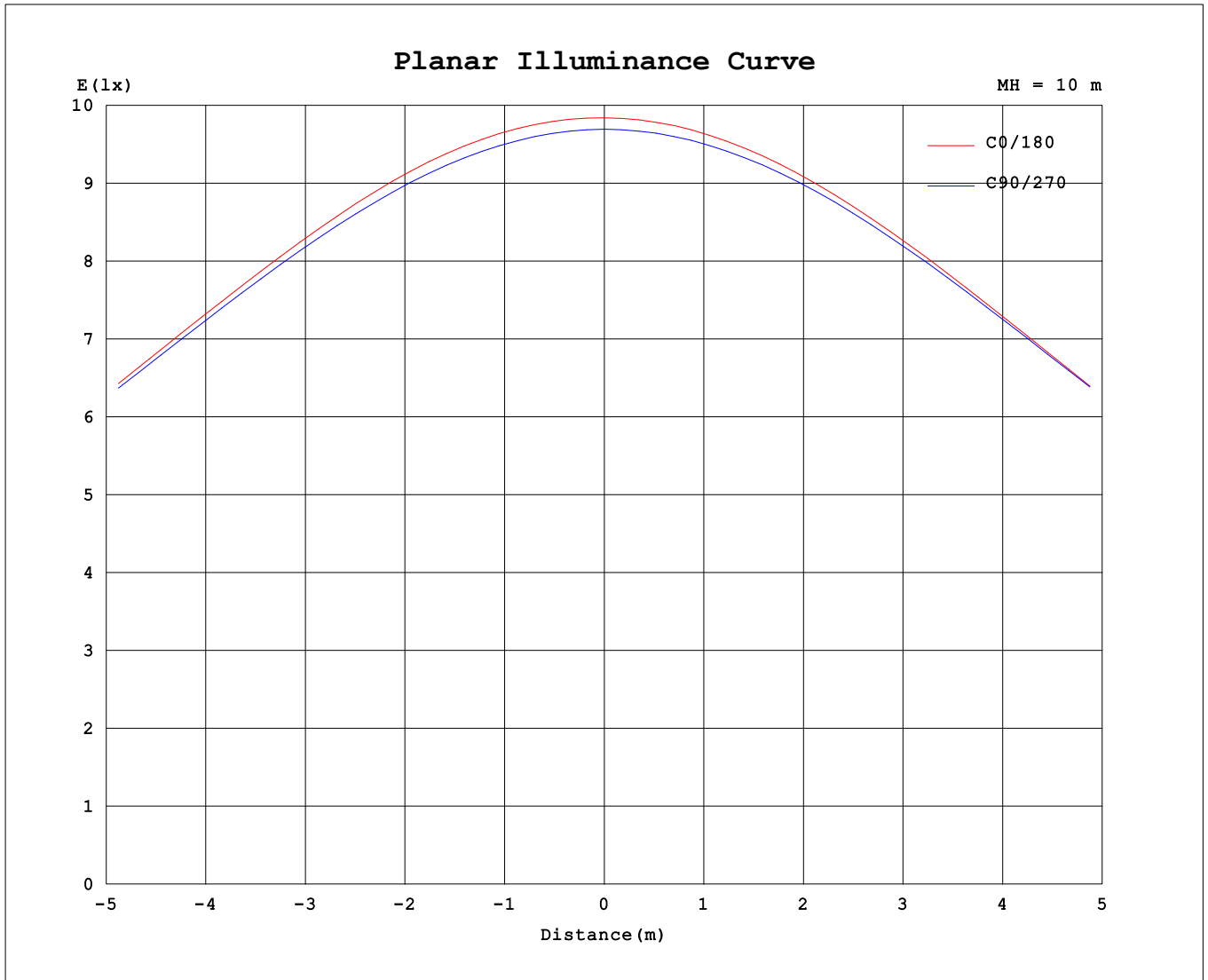
AvgL	cd/m2
L_0~180 (65) av	114952
L_0~180 (75) av	102024
L_0~180 (85) av	75793
L_90~270 (65) av	118197
L_90~270 (75) av	105621
L_90~270 (85) av	79037
L_45 (65) av	116344
L_45 (75) av	103828
L_45 (85) av	78867

Standard: GB/T 29293-2012

C Range: 0 - 360DEG
 C Interval: 15.0DEG
 Test Speed: HIGH
 Temperature:25.3°C
 Operators:DAMIN
 Test Date:2023-11-14

γ Range: 0 - 180DEG
 γ Interval: 1.0DEG
 Test System:EVERFINE GO-2000B_V1 SYSTEM V2.00.471
 Humidity:65.0%
 Test Distance:4.880m [K=1.0000]
 Remarks:

Planar Illuminance Curve



C Range: 0 - 360DEG
 C Interval: 15.0DEG
 Test Speed: HIGH
 Temperature: 25.3°C
 Operators: DAMIN
 Test Date: 2023-11-14

γ Range: 0 - 180DEG
 γ Interval: 1.0DEG
 Test System: EVERFINE GO-2000B_V1 SYSTEM V2.00.471
 Humidity: 65.0%
 Test Distance: 4.880m [K=1.0000]
 Remarks:

LUMINOUS DISTRIBUTION INTENSITY DATA

NAME: LED Strip	TYPE: Indoor lighting	WEIGHT: 20g
SPEC.: SCOB LED	DIM.: 1000*8*1.9MM	SERIAL No.: 20231114004
MFR.: EVERFINE	SUR.: 1000*8MM	Shielding Angle:

Table--1

UNIT: cd

C (DEG) \ γ (DEG)	0	15	30	45	60	75	90	105	120	135	150	165	180	195	210	225	240	255	270
0	984	982	974	971	971	970	969	969	970	973	977	980	984	982	974	971	971	970	969
5	981	980	973	970	969	968	966	965	965	968	971	974	980	976	969	966	967	966	966
10	971	971	964	961	959	959	956	954	954	955	958	960	968	963	957	954	956	955	956
15	952	951	946	945	943	942	939	937	936	937	938	939	949	942	938	935	939	938	940
20	926	926	922	923	920	919	915	913	911	911	912	912	922	916	912	910	914	914	916
25	893	895	894	894	890	890	884	882	879	878	878	878	889	882	879	877	882	883	886
30	854	858	858	856	850	853	847	845	841	839	837	837	848	841	840	838	844	846	850
35	805	808	813	808	808	806	803	794	795	787	790	783	794	794	787	793	792	801	800
40	750	750	757	755	759	753	752	743	743	734	736	729	741	741	735	740	741	750	750
45	692	693	698	697	702	696	694	685	684	676	676	669	681	681	676	682	683	692	693
50	628	629	633	631	636	633	629	621	619	610	609	603	614	614	611	617	619	628	631
55	557	558	562	562	565	561	558	550	547	538	536	530	542	542	540	545	548	558	561
60	478	479	484	484	487	484	480	472	469	460	458	452	464	464	463	468	472	480	485
65	396	396	400	401	404	401	396	389	385	377	374	369	381	381	381	386	389	397	403
70	305	310	309	314	313	313	304	301	293	290	284	283	294	291	295	296	303	307	315
75	216	220	220	223	222	221	214	211	204	201	196	195	206	204	207	208	214	217	224
80	130	133	133	135	133	132	126	124	119	116	112	111	121	119	122	123	128	131	135
85	55.7	57.7	57.0	58.8	57.0	56.5	52.1	51.5	47.9	45.9	42.6	43.8	50.0	48.4	49.5	50.6	55.0	56.2	58.1
90	12.0	12.8	12.3	12.7	11.9	10.6	8.58	9.80	9.02	8.02	6.97	6.71	8.07	8.01	8.88	9.57	11.8	11.0	9.31
95	5.09	5.18	5.02	4.78	4.24	3.65	3.62	3.96	3.84	3.93	3.98	4.02	4.04	4.21	4.37	4.30	4.32	4.31	3.96
100	3.86	3.81	3.79	3.78	3.78	3.81	3.84	3.90	3.85	3.86	3.84	3.81	3.95	4.03	4.10	4.21	4.30	4.18	3.96
105	4.07	4.05	4.08	4.13	4.23	4.29	4.33	4.29	4.26	4.25	4.25	4.23	4.42	4.50	4.55	4.61	4.55	4.50	4.49
110	4.54	4.53	4.58	4.68	4.77	4.89	4.96	4.91	4.84	4.77	4.73	4.70	4.90	4.95	4.99	5.02	5.05	5.11	5.12
115	5.09	5.07	5.14	5.23	5.31	5.44	5.56	5.52	5.43	5.34	5.26	5.21	5.39	5.43	5.48	5.56	5.63	5.72	5.74
120	5.66	5.63	5.72	5.74	5.88	6.02	6.14	6.10	6.03	5.91	5.83	5.75	5.93	5.96	6.04	6.13	6.21	6.30	6.32
125	6.23	6.20	6.25	6.31	6.44	6.58	6.70	6.68	6.60	6.49	6.40	6.32	6.49	6.53	6.61	6.70	6.79	6.87	6.87
130	6.80	6.79	6.82	6.88	7.01	7.14	7.26	7.25	7.18	7.08	6.98	6.88	7.05	7.10	7.17	7.27	7.35	7.43	7.42
135	7.38	7.39	7.40	7.45	7.58	7.69	7.81	7.81	7.75	7.65	7.55	7.45	7.60	7.65	7.73	7.82	7.90	7.97	7.96
140	7.93	7.94	7.97	8.01	8.12	8.23	8.33	8.34	8.29	8.19	8.10	8.00	8.14	8.18	8.26	8.34	8.41	8.48	8.47
145	8.47	8.51	8.52	8.55	8.65	8.75	8.84	8.85	8.80	8.71	8.63	8.53	8.65	8.70	8.77	8.84	8.90	8.97	8.95
150	9.00	9.06	9.06	9.08	9.16	9.25	9.32	9.34	9.29	9.22	9.13	9.04	9.15	9.19	9.25	9.31	9.37	9.43	9.41
155	9.54	9.56	9.55	9.56	9.65	9.72	9.77	9.79	9.74	9.68	9.61	9.53	9.65	9.66	9.71	9.76	9.81	9.86	9.84
160	10.1	10.0	10.0	10.0	10.1	10.1	10.2	10.2	10.2	10.1	10.1	9.99	10.1	10.1	10.1	10.2	10.2	10.3	10.2
165	10.5	10.5	10.4	10.4	10.5	10.5	10.6	10.6	10.6	10.5	10.5	10.4	10.6	10.5	10.5	10.6	10.6	10.6	10.6
170	10.9	10.9	10.8	10.8	10.8	10.9	10.9	10.9	10.9	10.9	10.9	10.8	11.0	10.9	10.9	10.9	10.9	10.9	10.9
175	11.2	11.2	11.1	11.1	11.1	11.1	11.1	11.2	11.1	11.2	11.2	11.1	11.3	11.2	11.2	11.2	11.2	11.2	11.2
180	11.4	11.4	11.3	11.3	11.3	11.3	11.3	11.3	11.3	11.3	11.3	11.3	11.5	11.3	11.3	11.3	11.3	11.3	11.3

C Range: 0 - 360DEG
 C Interval: 15.0DEG
 Test Speed: HIGH
 Temperature:25.3℃
 Operators:DAMIN
 Test Date:2023-11-14

γ Range: 0 - 180DEG
 γ Interval: 1.0DEG
 Test System:EVERFINE GO-2000B_V1 SYSTEM V2.00.471
 Humidity:65.0%
 Test Distance:4.880m [K=1.0000]
 Remarks:

LUMINOUS DISTRIBUTION INTENSITY DATA

NAME: LED Strip	TYPE: Indoor lighting	WEIGHT: 20g
SPEC.: SCOB LED	DIM.: 1000*8*1.9MM	SERIAL No.: 20231114004
MFR.: EVERFINE	SUR.: 1000*8MM	Shielding Angle:

Table--2

UNIT: cd

C (DEG) \ γ (DEG)	285	300	315	330	345														
0	969	970	973	977	980														
5	966	968	971	975	979														
10	956	959	963	967	970														
15	940	943	947	951	954														
20	917	921	925	926	931														
25	888	891	893	894	900														
30	851	855	857	857	862														
35	808	809	815	810	816														
40	758	755	765	756	760														
45	702	697	707	695	701														
50	637	636	640	631	637														
55	568	567	568	562	566														
60	494	489	492	487	489														
65	410	407	410	405	406														
70	319	320	319	319	317														
75	226	231	227	229	228														
80	136	139	141	142	141														
85	58.6	63.8	64.6	65.9	64.6														
90	11.6	16.1	16.2	16.8	16.1														
95	4.06	5.39	5.82	6.03	6.05														
100	3.99	4.03	4.18	4.05	3.88														
105	4.46	4.44	4.41	4.30	4.25														
110	5.07	4.97	4.92	4.80	4.72														
115	5.63	5.48	5.47	5.36	5.25														
120	6.21	6.03	6.01	5.91	5.80														
125	6.77	6.57	6.53	6.47	6.36														
130	7.31	7.14	7.09	6.98	6.94														
135	7.84	7.69	7.63	7.58	7.52														
140	8.35	8.20	8.16	8.11	8.09														
145	8.84	8.71	8.66	8.63	8.63														
150	9.32	9.19	9.15	9.13	9.13														
155	9.75	9.65	9.60	9.60	9.61														
160	10.2	10.1	10.0	10.0	10.1														
165	10.5	10.5	10.5	10.4	10.5														
170	10.9	10.8	10.8	10.8	10.8														
175	11.1	11.1	11.1	11.1	11.1														
180	11.3	11.3	11.3	11.3	11.3														

C Range: 0 - 360DEG
 C Interval: 15.0DEG
 Test Speed: HIGH
 Temperature:25.3℃
 Operators:DAMIN
 Test Date:2023-11-14

γ Range: 0 - 180DEG
 γ Interval: 1.0DEG
 Test System:EVERFINE GO-2000B_V1 SYSTEM V2.00.471
 Humidity:65.0%
 Test Distance:4.880m [K=1.0000]
 Remarks: