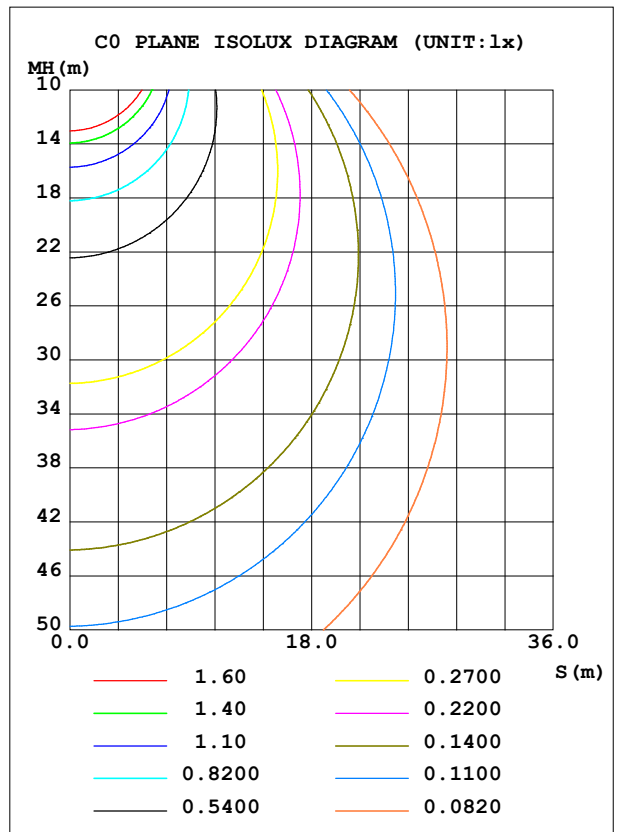
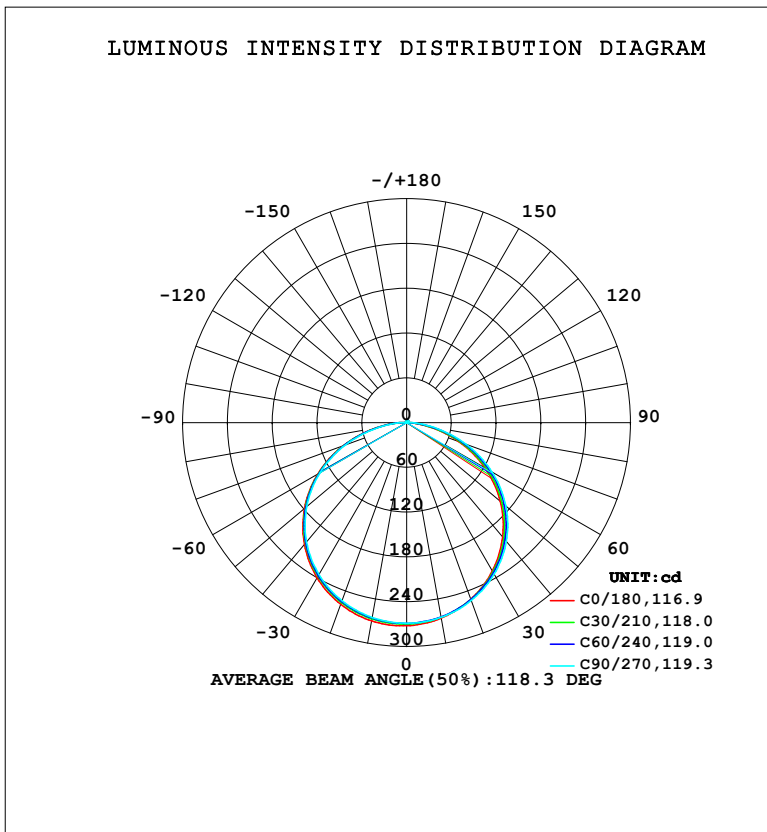


LUMINAIRE PHOTOMETRIC TEST REPORT

NAME: LED Strip	TYPE: Indoor lighting	WEIGHT: 20g
SPEC.: 2835 140LED	DIM.: 500*10*4.5MM	SERIAL No.: 20230922017
MFR.: EVERFINE	SUR.: 500*10MM	Shielding Angle:

DATA OF LAMP		PHOTOMETRIC DATA			
MODEL: F-24 (WCP) -HR-ME-EP-RTR		Imax (cd)	272.2	S/MH (C0/180)	1.31
NOMINAL POWER (W)	6.91531	LOR (%)	100.0	S/MH (C90/270)	1.30
RATED VOLTAGE (V)	DC 24	TOTAL FLUX (lm)	835.39	η UP, DN (C0-180)	0.7, 48.9
NOMINAL FLUX (lm)	835.389	CIE CLASS	DIRECT	η UP, DN (C180-360)	0.7, 49.7
LAMPS INSIDE	1	η up (%)	1.4	CIBSE SHR NOM	1.25
TEST VOLTAGE (V)	DC 24	η down (%)	98.6	CIBSE SHR MAX	1.35



C Range: 0 - 360DEG
 C Interval: 15.0DEG
 Test Speed: HIGH
 Temperature: 25.3°C
 Operators: DAMIN
 Test Date: 2023-09-23

γ Range: 0 - 180DEG
 γ Interval: 1.0DEG
 Test System: EVERFINE GO-2000B_V1 SYSTEM V2.00.471
 Humidity: 65.0%
 Test Distance: 4.880m [K=1.0000]
 Remarks:

ZONAL FLUX DIAGRAM

ZONAL FLUX DIAGRAM:

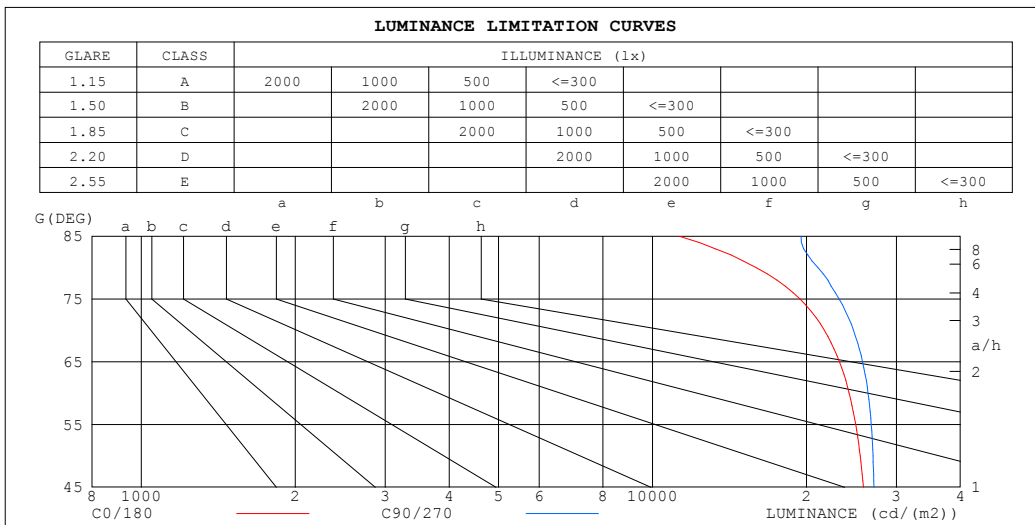
γ	C0	C45	C90	C135	C180	C225	C270	C315	γ	Φ zone	Φ total	%lum,lamp
10	266.0	264.6	265.0	266.4	269.7	266.2	265.1	265.0	0- 10	25.58	25.58	3.06,3.06
20	251.8	252.1	253.6	255.5	259.0	255.4	253.8	252.6	10- 20	73.75	99.33	11.9,11.9
30	229.7	232.0	234.5	236.8	240.1	236.8	235.1	232.5	20- 30	113.2	212.5	25.4,25.4
40	200.2	204.4	207.9	210.3	213.2	210.4	208.7	204.7	30- 40	138.9	351.5	42.1,42.1
50	163.8	169.3	173.5	175.9	178.7	176.5	174.8	169.7	40- 50	147.3	498.8	59.7,59.7
60	121.3	127.1	132.0	134.1	137.4	135.7	133.8	127.8	50- 60	136.5	635.2	76,76
70	74.15	79.76	84.54	86.80	90.41	89.14	86.92	80.62	60- 70	106.8	742.1	88.8,88.8
80	27.71	32.50	36.62	38.27	41.53	40.96	38.37	32.91	70- 80	62.92	805.0	96.4,96.4
90	1.419	3.586	3.652	4.576	4.521	5.819	4.246	2.583	80- 90	18.97	824.0	98.6,98.6
100	0.9963	1.012	1.068	0.9462	0.9266	1.010	1.115	1.025	90-100	1.603	825.6	98.8,98.8
110	1.276	1.322	1.370	1.249	1.222	1.302	1.426	1.349	100-110	1.217	826.8	99,99
120	1.600	1.650	1.702	1.586	1.553	1.642	1.758	1.676	110-120	1.467	828.2	99.1,99.1
130	1.927	1.968	2.022	1.916	1.875	1.966	2.073	1.993	120-130	1.617	829.9	99.3,99.3
140	2.243	2.283	2.323	2.238	2.193	2.272	2.362	2.299	130-140	1.641	831.5	99.5,99.5
150	2.538	2.574	2.598	2.537	2.492	2.555	2.629	2.577	140-150	1.518	833.0	99.7,99.7
160	2.824	2.826	2.840	2.799	2.788	2.811	2.862	2.818	150-160	1.244	834.3	99.9,99.9
170	3.054	3.037	3.039	3.027	3.044	3.022	3.050	3.022	160-170	0.8278	835.1	100,100
180	3.184	3.146	3.151	3.146	3.182	3.144	3.149	3.142	170-180	0.2946	835.4	100,100
DEG	LUMINOUS INTENSITY:cd									UNIT:lm		

C Range: 0 - 360DEG
 C Interval: 15.0DEG
 Test Speed: HIGH
 Temperature:25.3°C
 Operators:DAMIN
 Test Date:2023-09-23

γ Range: 0 - 180DEG
 γ Interval: 1.0DEG
 Test System:EVERFINE GO-2000B_V1 SYSTEM V2.00.471
 Humidity:65.0%
 Test Distance:4.880m [K=1.0000]
 Remarks:

LUMINANCE LIMITATION CURVES

NAME: LED Strip	TYPE: Indoor lighting	WEIGHT: 20g
SPEC.: 2835 140LED	DIM.: 500*10*4.5MM	SERIAL No.: 20230922017
MFR.: EVERFINE	SUR.: 500*10MM	Shielding Angle:



LUMINANCE cd/(m2)		
G (DEG)	C0/180	C90/270
85	11282	19513
80	15957	21086
75	19428	23177
70	21680	24717
65	23217	25767
60	24251	26404
55	24975	26788
50	25476	26996
45	25849	27103

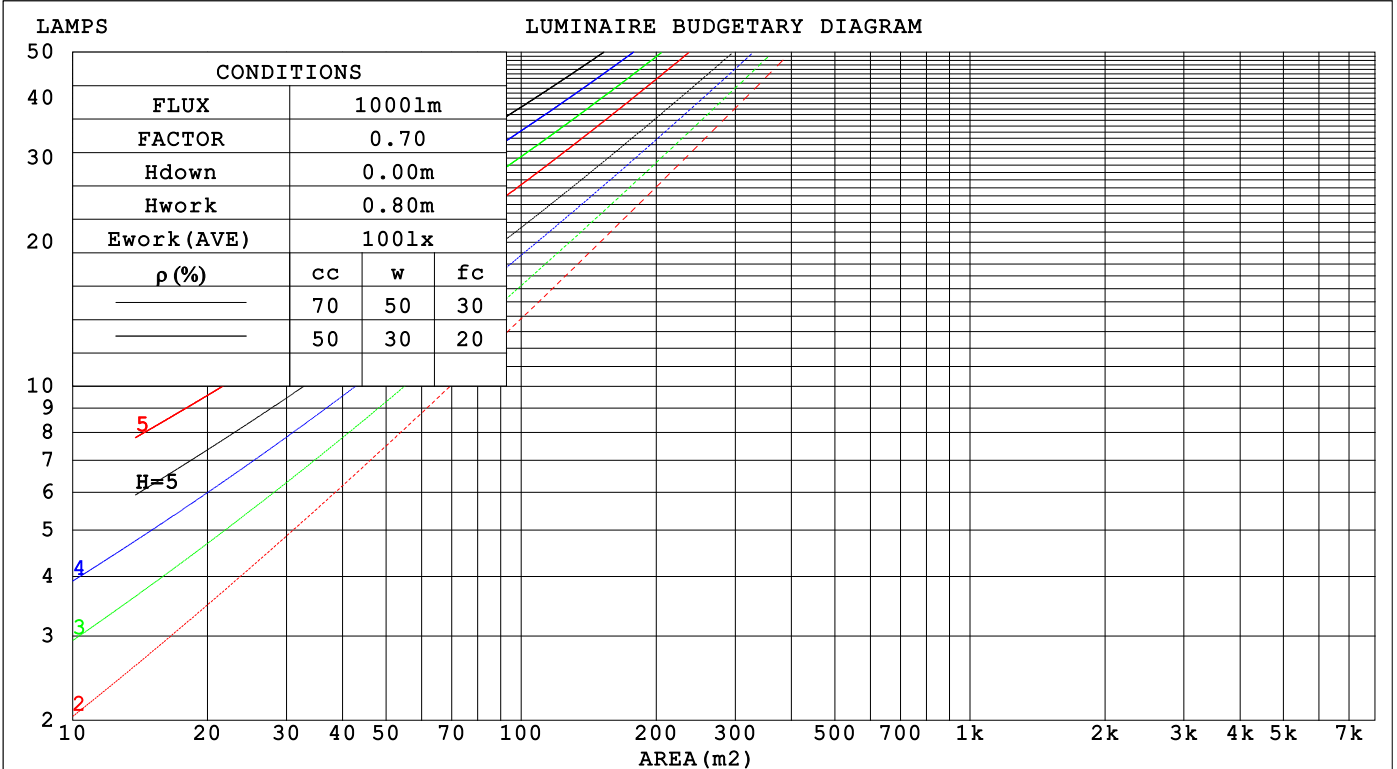
C Range: 0 - 360DEG
 C Interval: 15.0DEG
 Test Speed: HIGH
 Temperature: 25.3°C
 Operators: DAMIN
 Test Date: 2023-09-23

γ Range: 0 - 180DEG
 γ Interval: 1.0DEG
 Test System: EVERFINE GO-2000B_V1 SYSTEM V2.00.471
 Humidity: 65.0%
 Test Distance: 4.880m [K=1.0000]
 Remarks:

CU AND LUMINAIRE BUDGETARY ESTIMATE DIAGRAM

NAME: LED Strip	TYPE: Indoor lighting	WEIGHT: 20g
SPEC.: 2835 140LED	DIM.: 500*10*4.5MM	SERIAL No.: 20230922017
MFR.: EVERFINE	SUR.: 500*10MM	Shielding Angle:

pcc	80%			70%			50%			30%			10%			0
	50%	30%	10%	50%	30%	10%	50%	30%	10%	50%	30%	10%	50%	30%	10%	0
p _w	0															
p _{fc}	0															
RCR	RCR:Room Cavity Ratio															
	Coefficients of Utilization(CU)															
0.0	1.19	1.19	1.19	1.16	1.16	1.16	1.10	1.10	1.10	1.05	1.05	1.05	1.01	1.01	1.01	.99
1.0	1.03	.99	.95	1.01	.97	.93	.96	.93	.90	.92	.89	.87	.88	.86	.84	.82
2.0	.89	.82	.76	.87	.81	.75	.84	.78	.73	.80	.76	.72	.77	.73	.70	.67
3.0	.78	.70	.63	.77	.69	.62	.73	.67	.61	.70	.65	.60	.68	.63	.59	.56
4.0	.69	.60	.53	.68	.59	.53	.65	.58	.52	.62	.56	.51	.60	.55	.50	.48
5.0	.62	.52	.46	.60	.52	.45	.58	.50	.45	.56	.49	.44	.54	.48	.43	.41
6.0	.55	.46	.40	.54	.46	.39	.52	.45	.39	.50	.44	.38	.49	.43	.38	.36
7.0	.50	.41	.35	.49	.41	.35	.47	.40	.34	.46	.39	.34	.44	.38	.34	.32
8.0	.46	.37	.31	.45	.37	.31	.43	.36	.31	.42	.35	.30	.41	.35	.30	.28
9.0	.42	.33	.28	.41	.33	.28	.40	.33	.27	.39	.32	.27	.38	.31	.27	.25
10.0	.38	.30	.25	.38	.30	.25	.37	.30	.25	.36	.29	.25	.35	.29	.25	.23



C Range: 0 - 360DEG
 C Interval: 15.0DEG
 Test Speed: HIGH
 Temperature: 25.3°C
 Operators: DAMIN
 Test Date: 2023-09-23

γ Range: 0 - 180DEG
 γ Interval: 1.0DEG
 Test System: EVERFINE GO-2000B_V1 SYSTEM V2.00.471
 Humidity: 65.0%
 Test Distance: 4.880m [K=1.0000]
 Remarks:

WEC AND CCEC

NAME: LED Strip	TYPE: Indoor lighting	WEIGHT: 20g
SPEC.: 2835 140LED	DIM.: 500*10*4.5MM	SERIAL No.: 20230922017
MFR.: EVERFINE	SUR.: 500*10MM	Shielding Angle:

ρ_{cc}	80%			70%			50%			30%			10%			0
ρ_w	50%	30%	10%	50%	30%	10%	50%	30%	10%	50%	30%	10%	50%	30%	10%	0
ρ_{fc}	20%			20%			20%			20%			20%			0
RCR	RCR:Room Cavity Ratio						Wall Exitance Coefficients(WEC)									
0.0																
1.0	.319	.182	.058	.312	.178	.056	.298	.171	.055	.285	.164	.053	.273	.158	.051	
2.0	.299	.164	.050	.292	.161	.050	.279	.155	.048	.268	.150	.047	.257	.146	.046	
3.0	.275	.147	.044	.269	.144	.043	.258	.140	.043	.248	.136	.042	.239	.132	.041	
4.0	.253	.132	.039	.248	.130	.038	.238	.126	.038	.229	.123	.037	.221	.120	.037	
5.0	.234	.119	.034	.229	.118	.034	.220	.115	.034	.212	.112	.033	.204	.109	.033	
6.0	.216	.108	.031	.212	.107	.031	.204	.105	.030	.197	.102	.030	.190	.100	.030	
7.0	.201	.099	.028	.197	.098	.028	.190	.096	.028	.184	.094	.027	.178	.092	.027	
8.0	.188	.092	.026	.184	.091	.026	.178	.089	.025	.172	.087	.025	.166	.085	.025	
9.0	.176	.085	.024	.173	.084	.024	.167	.083	.023	.162	.081	.023	.157	.079	.023	
10.0	.165	.079	.022	.162	.078	.022	.157	.077	.022	.152	.076	.021	.148	.074	.021	

ρ_{cc}	80%			70%			50%			30%			10%			0
ρ_w	50%	30%	10%	50%	30%	10%	50%	30%	10%	50%	30%	10%	50%	30%	10%	0
ρ_{fc}	20%			20%			20%			20%			20%			0
RCR	RCR:Room Cavity Ratio						Ceiling Cavity Exitance Coefficients(CCEC)									
0.0	.201	.201	.201	.172	.172	.172	.117	.117	.117	.067	.067	.067	.022	.022	.022	
1.0	.191	.167	.144	.164	.143	.124	.112	.098	.086	.064	.057	.050	.021	.018	.016	
2.0	.184	.142	.108	.157	.123	.093	.108	.085	.065	.062	.049	.038	.020	.016	.012	
3.0	.176	.125	.084	.151	.108	.073	.104	.075	.051	.060	.044	.030	.019	.014	.010	
4.0	.169	.112	.068	.145	.097	.059	.099	.067	.042	.058	.039	.025	.019	.013	.008	
5.0	.161	.101	.057	.138	.088	.050	.095	.061	.035	.055	.036	.021	.018	.012	.007	
6.0	.154	.093	.049	.132	.081	.043	.091	.056	.030	.053	.033	.018	.017	.011	.006	
7.0	.147	.086	.044	.126	.075	.038	.087	.052	.027	.051	.031	.016	.016	.010	.005	
8.0	.141	.080	.039	.121	.070	.034	.084	.049	.024	.049	.029	.014	.016	.009	.005	
9.0	.134	.076	.036	.116	.066	.031	.080	.046	.022	.047	.027	.013	.015	.009	.004	
10.0	.129	.071	.033	.111	.062	.029	.077	.044	.021	.045	.026	.012	.015	.008	.004	

C Range: 0 - 360DEG
 C Interval: 15.0DEG
 Test Speed: HIGH
 Temperature:25.3°C
 Operators:DAMIN
 Test Date:2023-09-23

γ Range: 0 - 180DEG
 γ Interval: 1.0DEG
 Test System:EVERFINE GO-2000B_V1 SYSTEM V2.00.471
 Humidity:65.0%
 Test Distance:4.880m [K=1.0000]
 Remarks:

UGR(Unified Glare Rating) Table

NAME: LED Strip		TYPE: Indoor lighting					WEIGHT: 20g				
SPEC.: 2835 140LED		DIM.: 500*10*4.5MM					SERIAL No.: 20230922017				
MFR.: EVERFINE		SUR.: 500*10MM					Shielding Angle:				
ceiling/cavity		0.7	0.7	0.5	0.5	0.3	0.7	0.7	0.5	0.5	0.3
walls		0.5	0.3	0.5	0.3	0.3	0.5	0.3	0.5	0.3	0.3
working plane		0.2	0.2	0.2	0.2	0.2	0.2	0.2	0.2	0.2	0.2
Room dimensions		Viewed crosswise					Viewed endwise				
x = 2H y = 2H		24.6	26.1	24.8	26.3	26.5	24.9	26.4	25.2	26.6	26.9
	3H	26.0	27.4	26.3	27.7	28.0	26.5	27.9	26.8	28.2	28.4
	4H	26.6	27.9	26.9	28.2	28.5	27.2	28.5	27.5	28.8	29.1
	6H	26.9	28.2	27.3	28.5	28.8	27.6	28.9	28.0	29.2	29.5
	8H	27.0	28.2	27.4	28.5	28.9	27.8	29.0	28.1	29.3	29.6
	12H	27.0	28.2	27.4	28.5	28.9	27.9	29.1	28.3	29.4	29.7
	4H 2H	25.2	26.6	25.5	26.8	27.1	25.5	26.8	25.8	27.1	27.4
	3H	26.9	28.0	27.2	28.4	28.7	27.3	28.4	27.6	28.8	29.1
	4H	27.5	28.6	27.9	29.0	29.3	28.0	29.1	28.4	29.5	29.8
	6H	28.0	28.9	28.4	29.3	29.7	28.6	29.6	29.1	30.0	30.4
	8H	28.1	29.0	28.6	29.4	29.8	28.9	29.7	29.3	30.1	30.6
	12H	28.2	29.0	28.6	29.4	29.8	29.0	29.8	29.5	30.2	30.7
	8H 4H	27.8	28.7	28.2	29.1	29.5	28.3	29.2	28.7	29.6	30.0
	6H	28.4	29.2	28.9	29.6	30.0	29.0	29.8	29.5	30.2	30.6
	8H	28.6	29.3	29.1	29.7	30.2	29.3	30.0	29.8	30.4	30.9
	12H	28.7	29.3	29.2	29.8	30.3	29.6	30.1	30.1	30.6	31.1
	12H 4H	27.8	28.6	28.3	29.1	29.5	28.3	29.1	28.7	29.5	29.9
	6H	28.5	29.1	29.0	29.6	30.1	29.1	29.7	29.5	30.2	30.6
	8H	28.7	29.3	29.2	29.7	30.3	29.4	30.0	29.9	30.4	30.9
Variations with the observer position at spacings(CIE Pub.117):											
S = 1.0H		+ 0.2 / - 0.2					+ 0.1 / - 0.2				
1.5H		+ 0.2 / - 0.4					+ 0.2 / - 0.3				
2.0H		+ 0.2 / - 0.4					+ 0.2 / - 0.3				

CIE Pub.117, 835.4 lm Total Lamp Luminous Flux Correct (8log(F/F0) = -0.6)
 Area: 0.01 m2

C Range: 0 - 360DEG
 C Interval: 15.0DEG
 Test Speed: HIGH
 Temperature:25.3°C
 Operators:DAMIN
 Test Date:2023-09-23

γ Range: 0 - 180DEG
 γ Interval: 1.0DEG
 Test System:EVERFINE GO-2000B_V1 SYSTEM V2.00.471
 Humidity:65.0%
 Test Distance:4.880m [K=1.0000]
 Remarks:

UTILIZATION FACTORS TABLE

NAME: LED Strip	TYPE: Indoor lighting	WEIGHT: 20g
SPEC.: 2835 140LED	DIM.: 500*10*4.5MM	SERIAL No.: 20230922017
MFR.: EVERFINE	SUR.: 500*10MM	Shielding Angle:

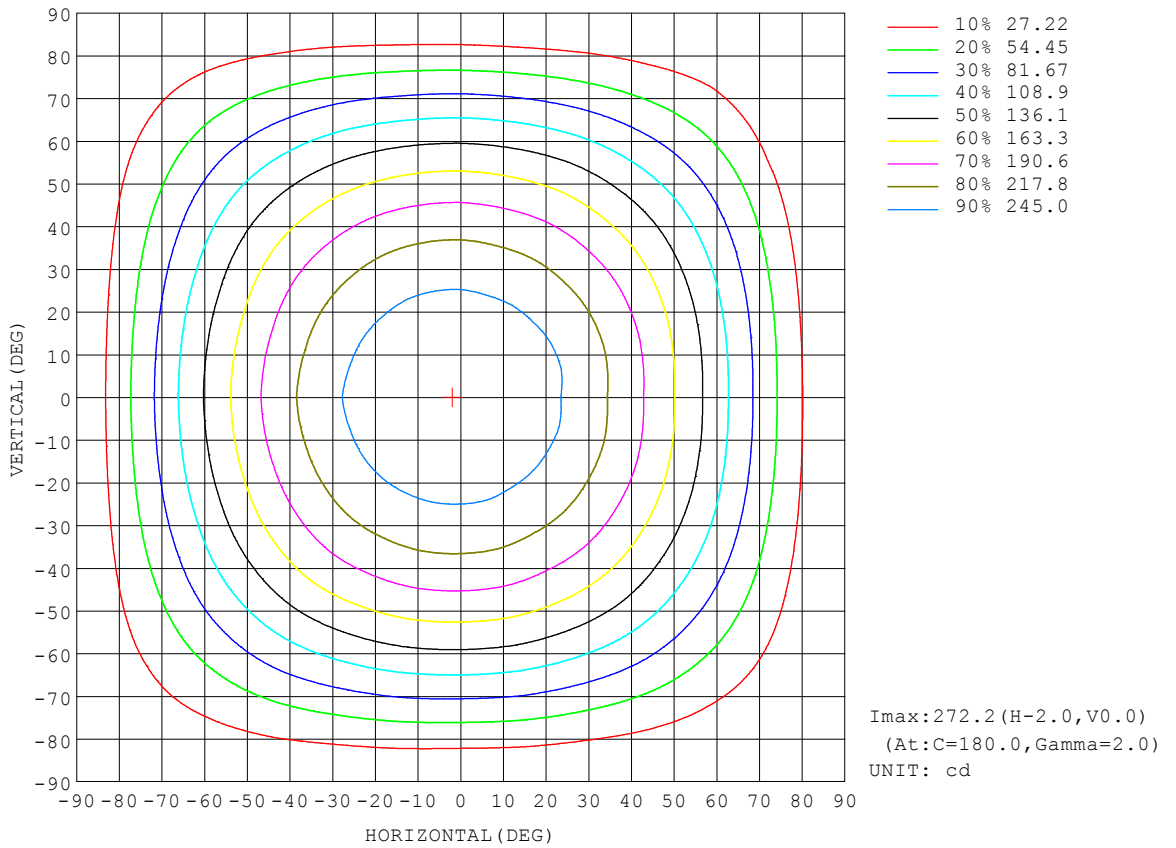
REFLECTANCE										
Ceiling	0.8	0.8	0.8	0.7	0.7	0.7	0.5	0.5	0.5	0
Walls	0.7	0.5	0.3	0.7	0.5	0.3	0.7	0.5	0.3	0
Working plane	0.2	0.2	0.2	0.2	0.2	0.2	0.2	0.2	0.2	0
ROOM INDEX	UTILIZATION FACTORS (PERCENT) $k(RI) \times RCR = 5$									
k = 0.60	56	44	37	55	44	37	54	43	37	30
0.80	66	54	47	65	54	46	63	53	46	39
1.00	74	63	56	73	62	55	71	64	55	47
1.25	82	71	63	80	70	63	77	68	62	54
1.50	87	77	69	85	76	69	82	74	68	60
2.00	94	85	78	92	84	77	88	81	76	67
2.50	98	90	83	96	88	82	92	85	80	72
3.00	101	94	88	99	92	87	95	89	85	76
4.00	105	99	95	103	98	93	98	94	90	81
5.00	108	103	99	105	101	97	101	97	94	84
ROOM INDEX	UF(total)									Direct
According to DIN EN 13032-2 2004			Suspended				SHRNOM = 1.25			

C Range: 0 - 360DEG
 C Interval: 15.0DEG
 Test Speed: HIGH
 Temperature: 25.3°C
 Operators: DAMIN
 Test Date: 2023-09-23

γ Range: 0 - 180DEG
 γ Interval: 1.0DEG
 Test System: EVERFINE GO-2000B_V1 SYSTEM V2.00.471
 Humidity: 65.0%
 Test Distance: 4.880m [K=1.0000]
 Remarks:

ISOCANDELA DIAGRAM

NAME: LED Strip	TYPE: Indoor lighting	WEIGHT: 20g
SPEC.: 2835 140LED	DIM.: 500*10*4.5MM	SERIAL No.: 20230922017
MFR.: EVERFINE	SUR.: 500*10MM	Shielding Angle:

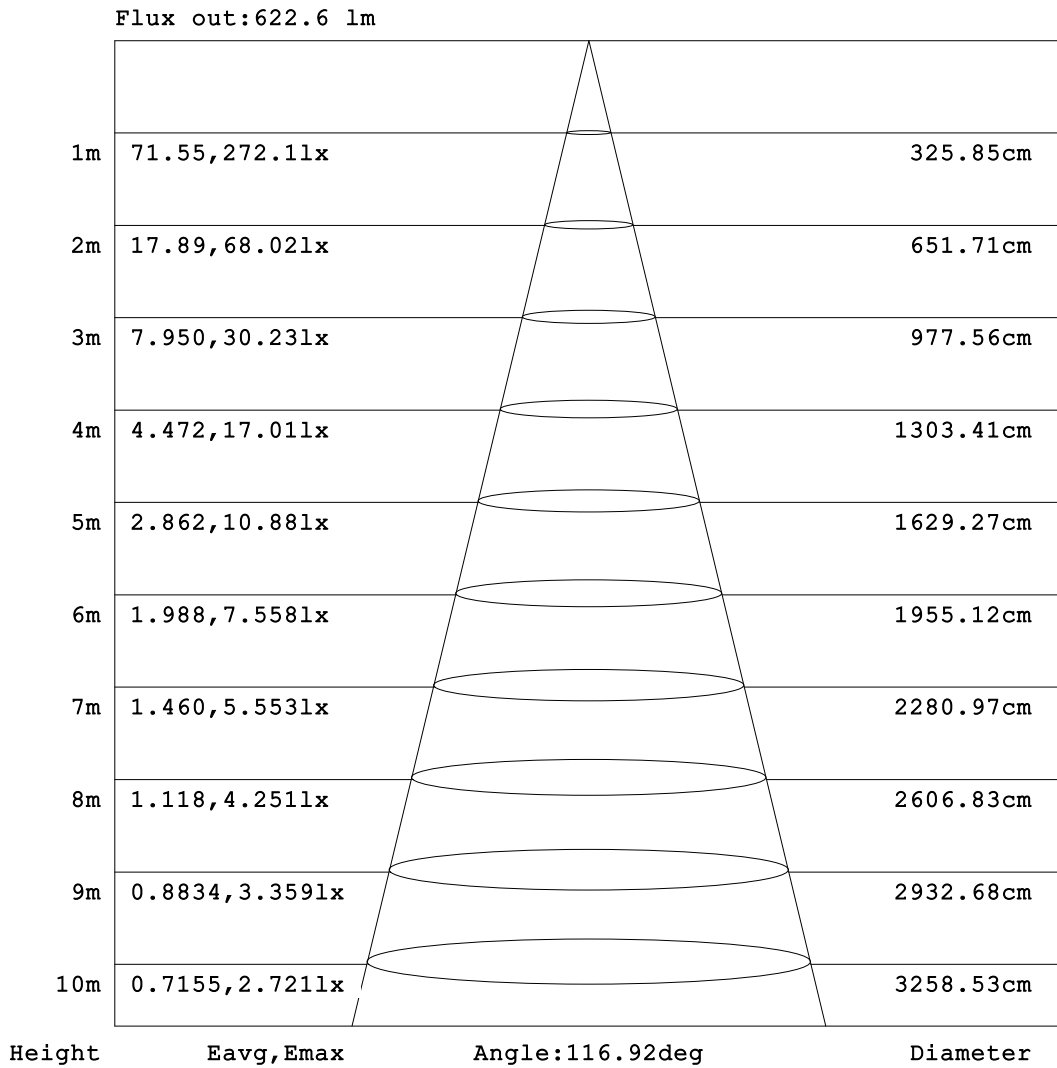


C Range: 0 - 360DEG
 C Interval: 15.0DEG
 Test Speed: HIGH
 Temperature:25.3°C
 Operators:DAMIN
 Test Date:2023-09-23

γ Range: 0 - 180DEG
 γ Interval: 1.0DEG
 Test System:EVERFINE GO-2000B_V1 SYSTEM V2.00.471
 Humidity:65.0%
 Test Distance:4.880m [K=1.0000]
 Remarks:

AAI Figure

NAME: LED Strip	TYPE: Indoor lighting	WEIGHT: 20g
SPEC.: 2835 140LED	DIM.: 500*10*4.5MM	SERIAL No.: 20230922017
MFR.: EVERFINE	SUR.: 500*10MM	Shielding Angle:



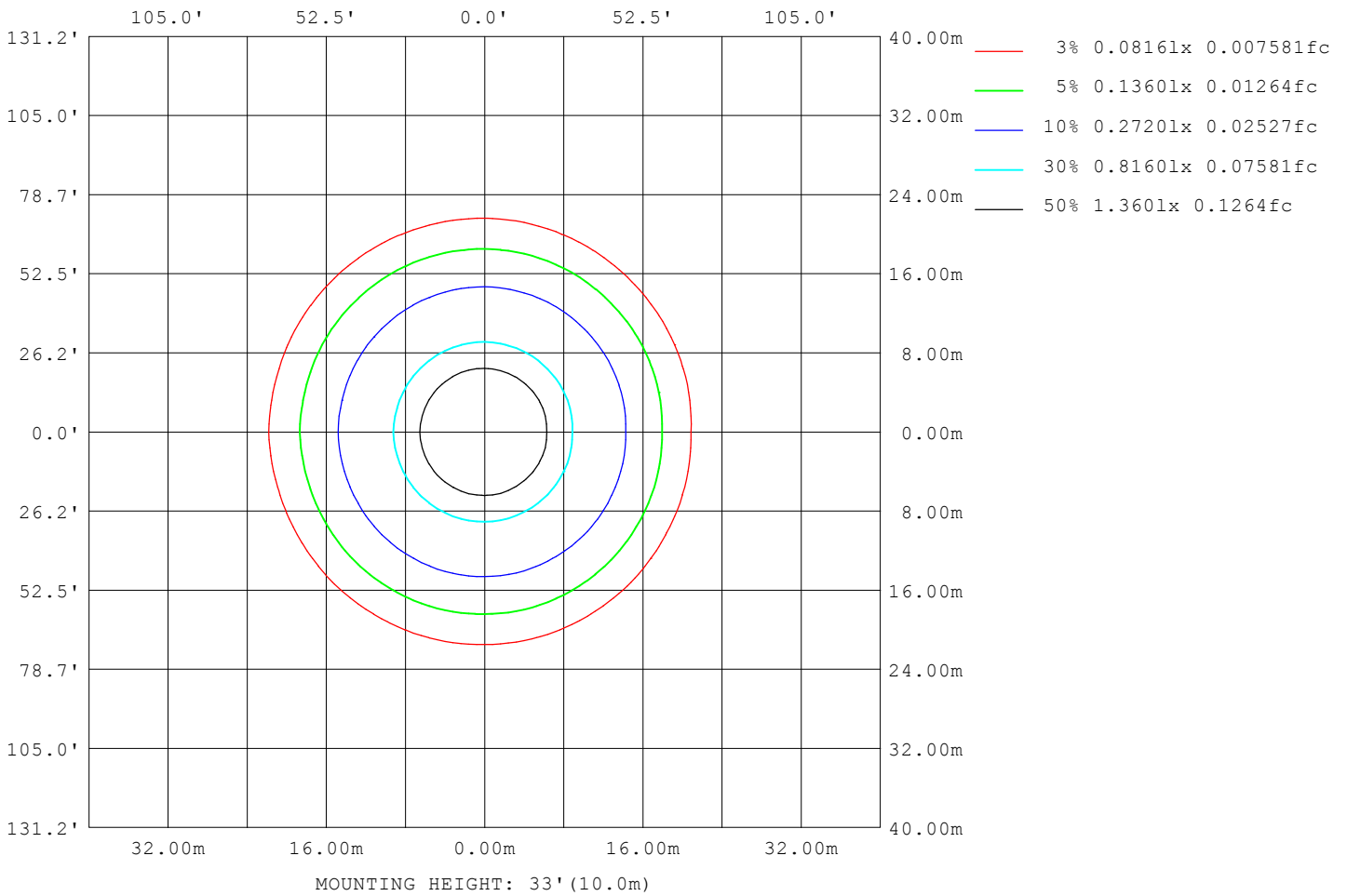
Note: The Curves indicate the illuminated area and the average illumination when the luminaire is at different distance.

C Range: 0 - 360DEG
 C Interval: 15.0DEG
 Test Speed: HIGH
 Temperature: 25.3°C
 Operators: DAMIN
 Test Date: 2023-09-23

γ Range: 0 - 180DEG
 γ Interval: 1.0DEG
 Test System: EVERFINE GO-2000B_V1 SYSTEM V2.00.471
 Humidity: 65.0%
 Test Distance: 4.880m [K=1.0000]
 Remarks:

ISOLUX DIAGRAM

NAME: LED Strip	TYPE: Indoor lighting	WEIGHT: 20g
SPEC.: 2835 140LED	DIM.: 500*10*4.5MM	SERIAL No.: 20230922017
MFR.: EVERFINE	SUR.: 500*10MM	Shielding Angle:



C Range: 0 - 360DEG
 C Interval: 15.0DEG
 Test Speed: HIGH
 Temperature: 25.3°C
 Operators: DAMIN
 Test Date: 2023-09-23

γ Range: 0 - 180DEG
 γ Interval: 1.0DEG
 Test System: EVERFINE GO-2000B_V1 SYSTEM V2.00.471
 Humidity: 65.0%
 Test Distance: 4.880m [K=1.0000]
 Remarks:

LED Avg.L Report

NAME: LED Strip	TYPE: Indoor lighting	WEIGHT: 20g
SPEC.: 2835 140LED	DIM.: 500*10*4.5MM	SERIAL No.: 20230922017
MFR.: EVERFINE	SUR.: 500*10MM	Shielding Angle:

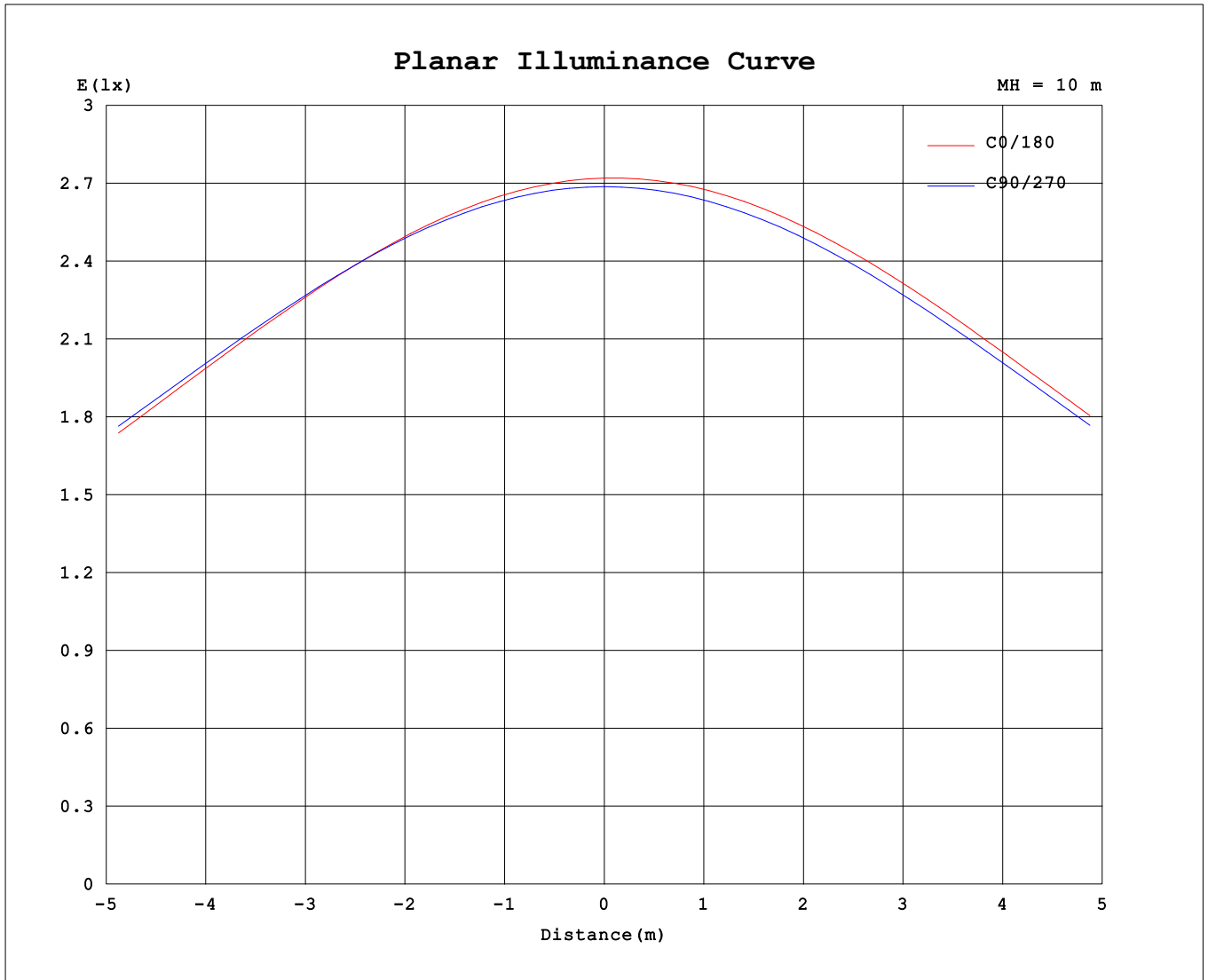
AvgL	cd/m2
L_0~180 (65) av	25149
L_0~180 (75) av	22397
L_0~180 (85) av	17084
L_90~270 (65) av	26016
L_90~270 (75) av	23594
L_90~270 (85) av	20199
L_45 (65) av	25585
L_45 (75) av	23025
L_45 (85) av	18679

Standard: GB/T 29293-2012

C Range: 0 - 360DEG
 C Interval: 15.0DEG
 Test Speed: HIGH
 Temperature:25.3°C
 Operators:DAMIN
 Test Date:2023-09-23

γ Range: 0 - 180DEG
 γ Interval: 1.0DEG
 Test System:EVERFINE GO-2000B_V1 SYSTEM V2.00.471
 Humidity:65.0%
 Test Distance:4.880m [K=1.0000]
 Remarks:

Planar Illuminance Curve



C Range: 0 - 360DEG
 C Interval: 15.0DEG
 Test Speed: HIGH
 Temperature: 25.3°C
 Operators: DAMIN
 Test Date: 2023-09-23

γ Range: 0 - 180DEG
 γ Interval: 1.0DEG
 Test System: EVERFINE GO-2000B_V1 SYSTEM V2.00.471
 Humidity: 65.0%
 Test Distance: 4.880m [K=1.0000]
 Remarks:

LUMINOUS DISTRIBUTION INTENSITY DATA

NAME: LED Strip	TYPE: Indoor lighting	WEIGHT: 20g
SPEC.: 2835 140LED	DIM.: 500*10*4.5MM	SERIAL No.: 20230922017
MFR.: EVERFINE	SUR.: 500*10MM	Shielding Angle:

Table--1

UNIT: cd

C (DEG) \ γ (DEG)	0	15	30	45	60	75	90	105	120	135	150	165	180	195	210	225	240	255	270
0	272	272	270	269	269	269	269	269	269	270	271	272	272	272	270	269	269	269	269
5	270	270	268	268	268	268	268	268	268	269	270	271	272	271	269	269	268	268	268
10	266	266	265	265	264	265	265	265	266	266	268	269	270	268	267	266	266	265	265
15	260	261	259	259	259	260	260	261	261	262	263	264	265	264	263	262	261	261	260
20	252	253	252	252	252	253	254	254	255	256	257	257	259	257	256	255	255	254	254
25	242	243	243	243	243	245	245	246	246	247	248	249	251	249	248	247	247	246	245
30	230	231	231	232	232	234	235	235	236	237	238	238	240	238	238	237	237	236	235
35	216	218	218	219	220	222	222	223	223	225	225	226	228	226	225	225	224	224	223
40	200	202	203	204	205	207	208	209	209	210	210	211	213	211	211	210	210	209	209
45	183	185	186	188	189	191	192	193	193	194	194	195	197	195	195	194	194	193	193
50	164	166	167	169	171	173	174	175	175	176	176	176	179	177	177	177	176	176	175
55	143	145	147	149	151	153	154	155	155	156	156	156	159	157	158	157	157	156	155
60	121	123	124	127	129	131	132	133	133	134	134	135	137	136	136	136	135	134	134
65	98.1	100	101	104	106	108	109	110	110	111	111	111	114	113	114	113	113	111	111
70	74.1	76.0	77.0	79.8	81.6	84.2	84.5	85.9	85.8	86.8	86.4	87.4	90.4	89.1	89.7	89.1	88.8	87.4	86.9
75	50.3	51.9	52.9	55.2	57.1	59.6	60.0	61.2	61.3	62.0	61.9	62.6	65.7	64.6	65.1	64.8	64.3	63.0	62.1
80	27.7	29.5	30.1	32.5	33.8	36.3	36.6	37.8	37.6	38.3	37.9	38.7	41.5	40.6	41.2	41.0	40.6	39.2	38.4
85	9.83	11.3	12.1	13.9	15.0	16.8	17.0	17.9	17.5	17.7	17.1	17.7	19.9	19.0	19.9	19.8	19.9	18.8	18.2
90	1.42	1.91	2.51	3.59	4.33	4.75	3.65	5.31	5.01	4.58	3.71	3.50	4.52	4.34	5.37	5.82	6.37	5.57	4.25
95	1.02	1.07	1.09	1.15	1.15	1.04	1.03	1.10	0.98	0.99	1.01	0.99	0.97	1.02	1.10	1.22	1.25	1.13	1.08
100	1.00	1.02	1.00	1.01	1.03	1.06	1.07	1.09	0.99	0.95	0.90	0.89	0.93	0.94	0.99	1.01	1.06	1.13	1.12
105	1.11	1.14	1.13	1.16	1.17	1.20	1.19	1.17	1.12	1.08	1.04	1.02	1.06	1.07	1.10	1.14	1.19	1.22	1.25
110	1.28	1.30	1.29	1.32	1.34	1.37	1.37	1.34	1.29	1.25	1.20	1.18	1.22	1.23	1.27	1.30	1.36	1.39	1.43
115	1.44	1.46	1.45	1.49	1.50	1.53	1.54	1.51	1.46	1.42	1.37	1.35	1.39	1.41	1.44	1.48	1.52	1.56	1.60
120	1.60	1.62	1.62	1.65	1.66	1.69	1.70	1.68	1.63	1.59	1.54	1.51	1.55	1.57	1.60	1.64	1.69	1.72	1.76
125	1.76	1.78	1.78	1.81	1.82	1.85	1.86	1.84	1.79	1.75	1.70	1.68	1.71	1.73	1.77	1.80	1.85	1.88	1.92
130	1.93	1.95	1.95	1.97	1.98	2.01	2.02	2.00	1.95	1.92	1.87	1.85	1.88	1.90	1.93	1.97	2.01	2.04	2.07
135	2.09	2.12	2.11	2.13	2.14	2.17	2.18	2.16	2.11	2.08	2.03	2.01	2.04	2.05	2.09	2.12	2.17	2.19	2.22
140	2.24	2.28	2.27	2.28	2.29	2.32	2.32	2.31	2.27	2.24	2.19	2.17	2.19	2.21	2.24	2.27	2.31	2.34	2.36
145	2.39	2.43	2.42	2.43	2.44	2.46	2.46	2.46	2.42	2.39	2.35	2.33	2.34	2.36	2.39	2.42	2.45	2.48	2.50
150	2.54	2.58	2.56	2.57	2.57	2.60	2.60	2.59	2.56	2.54	2.49	2.48	2.49	2.50	2.53	2.55	2.59	2.61	2.63
155	2.68	2.71	2.69	2.70	2.70	2.73	2.72	2.72	2.69	2.67	2.64	2.63	2.64	2.64	2.67	2.68	2.72	2.73	2.75
160	2.82	2.83	2.82	2.83	2.82	2.85	2.84	2.84	2.81	2.80	2.77	2.77	2.79	2.77	2.80	2.81	2.84	2.85	2.86
165	2.95	2.95	2.93	2.94	2.93	2.95	2.95	2.95	2.93	2.92	2.89	2.90	2.93	2.90	2.92	2.92	2.95	2.95	2.96
170	3.05	3.05	3.03	3.04	3.03	3.05	3.04	3.05	3.03	3.03	3.00	3.02	3.04	3.01	3.02	3.02	3.04	3.04	3.05
175	3.13	3.13	3.10	3.11	3.11	3.12	3.11	3.12	3.11	3.11	3.10	3.12	3.13	3.10	3.11	3.10	3.12	3.11	3.12
180	3.18	3.17	3.15	3.15	3.15	3.15	3.15	3.15	3.15	3.15	3.14	3.16	3.18	3.16	3.16	3.14	3.15	3.15	3.15

C Range: 0 - 360DEG
 C Interval: 15.0DEG
 Test Speed: HIGH
 Temperature:25.3℃
 Operators:DAMIN
 Test Date:2023-09-23

γ Range: 0 - 180DEG
 γ Interval: 1.0DEG
 Test System:EVERFINE GO-2000B_V1 SYSTEM V2.00.471
 Humidity:65.0%
 Test Distance:4.880m [K=1.0000]
 Remarks:

LUMINOUS DISTRIBUTION INTENSITY DATA

NAME: LED Strip	TYPE: Indoor lighting	WEIGHT: 20g
SPEC.: 2835 140LED	DIM.: 500*10*4.5MM	SERIAL No.: 20230922017
MFR.: EVERFINE	SUR.: 500*10MM	Shielding Angle:

Table--2

UNIT: cd

C (DEG) \ γ (DEG)	285	300	315	330	345														
0	269	269	270	271	272														
5	267	268	268	270	271														
10	264	265	265	266	267														
15	260	260	260	261	261														
20	253	253	253	253	254														
25	244	244	244	244	244														
30	234	233	233	233	232														
35	221	221	220	219	219														
40	207	206	205	204	203														
45	191	190	188	187	186														
50	173	172	170	169	167														
55	153	152	150	148	146														
60	132	131	128	126	124														
65	109	107	105	103	101														
70	85.1	83.2	80.6	79.3	77.3														
75	60.6	58.6	56.3	54.8	52.8														
80	36.7	35.1	32.9	31.8	26.6														
85	16.5	15.5	13.7	12.5	9.97														
90	4.35	3.79	2.58	1.98	1.56														
95	1.01	1.02	1.11	1.08	1.04														
100	1.08	1.06	1.03	1.02	1.04														
105	1.23	1.21	1.18	1.17	1.16														
110	1.40	1.38	1.35	1.33	1.32														
115	1.57	1.55	1.51	1.50	1.49														
120	1.73	1.71	1.68	1.66	1.65														
125	1.89	1.87	1.84	1.83	1.81														
130	2.04	2.02	1.99	1.99	1.97														
135	2.19	2.18	2.15	2.14	2.14														
140	2.34	2.32	2.30	2.30	2.30														
145	2.47	2.46	2.44	2.44	2.45														
150	2.61	2.60	2.58	2.58	2.59														
155	2.73	2.72	2.70	2.71	2.72														
160	2.84	2.84	2.82	2.83	2.84														
165	2.95	2.94	2.93	2.94	2.95														
170	3.03	3.04	3.02	3.03	3.05														
175	3.11	3.11	3.10	3.11	3.12														
180	3.15	3.15	3.14	3.14	3.16														

C Range: 0 - 360DEG
 C Interval: 15.0DEG
 Test Speed: HIGH
 Temperature:25.3℃
 Operators:DAMIN
 Test Date:2023-09-23

γ Range: 0 - 180DEG
 γ Interval: 1.0DEG
 Test System:EVERFINE GO-2000B_V1 SYSTEM V2.00.471
 Humidity:65.0%
 Test Distance:4.880m [K=1.0000]
 Remarks: