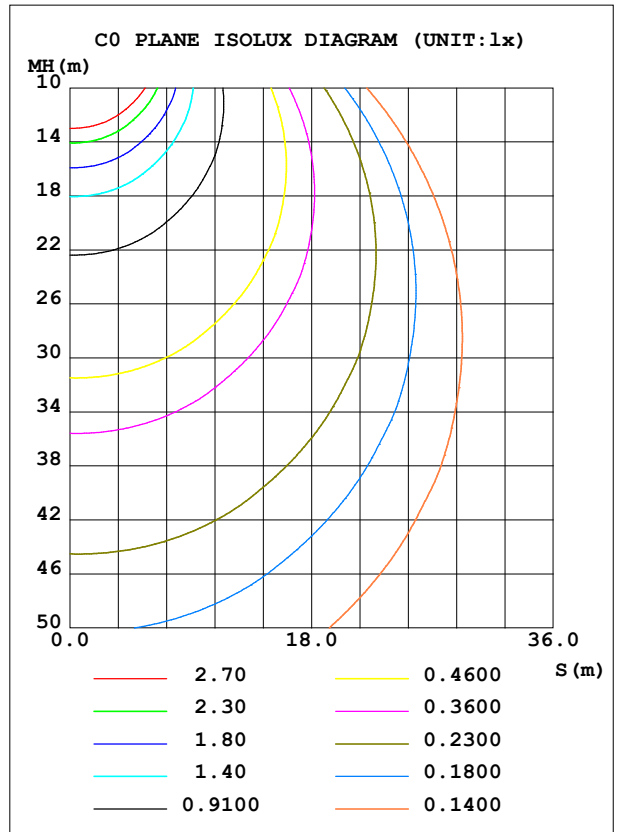
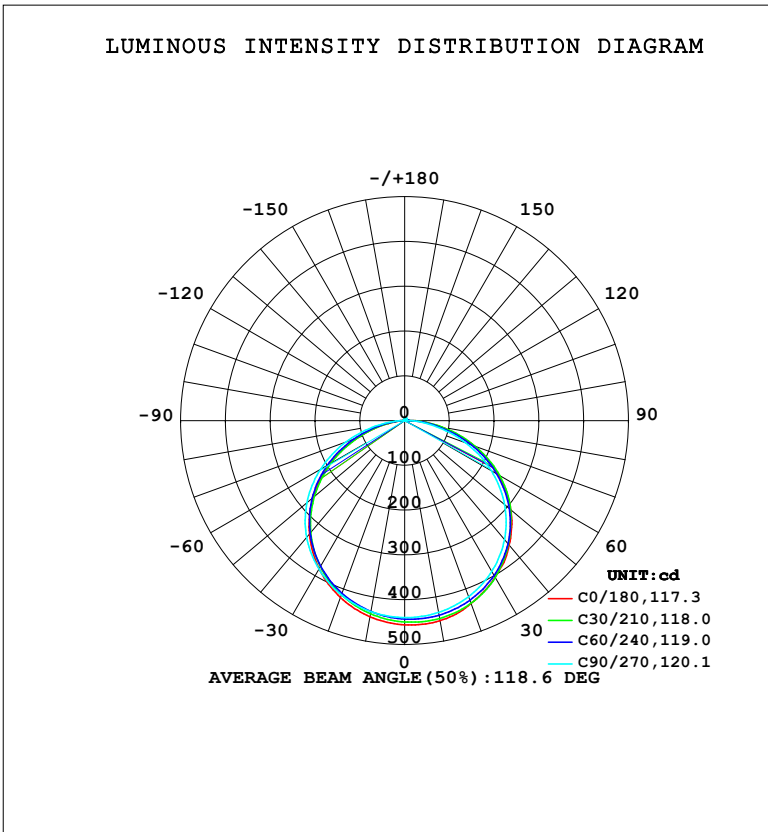


**LUMINAIRE PHOTOMETRIC TEST REPORT**

NAME: LED Strip	TYPE: Indoor lighting	WEIGHT: 75g
SPEC.: 2835 120LED	DIM.: 1000*8*1.2MM	SERIAL No.: 20240503028
MFR.: EVERFINE	SUR.: 1000*8MM	Shielding Angle:

DATA OF LAMP		PHOTOMETRIC DATA			
MODEL: 2835-24 (WCP) -HR-EP-RTR 1M		Imax (cd)	456.5	S/MH (C0/180)	1.25
NOMINAL POWER (W)	12.9182	LOR (%)	100.0	S/MH (C90/270)	1.30
RATED VOLTAGE (V)	DC 24V	TOTAL FLUX (lm)	1386.0	$\eta$ UP, DN (C0-180)	1.2, 50.2
NOMINAL FLUX (lm)	1385.99	CIE CLASS	DIRECT	$\eta$ UP, DN (C180-360)	0.9, 47.7
LAMPS INSIDE	1	$\eta$ up (%)	2.1	CIBSE SHR NOM	1.25
TEST VOLTAGE (V)	DC 24V	$\eta$ down (%)	97.9	CIBSE SHR MAX	1.35



C Range: 0 - 360DEG  
 C Interval: 15.0DEG  
 Test Speed: HIGH  
 Temperature: 25.3°C  
 Operators: DAMIN  
 Test Date: 2024-05-06

$\gamma$  Range: 0 - 180DEG  
 $\gamma$  Interval: 1.0DEG  
 Test System: EVERFINE GO-2000B\_V1 SYSTEM V2.00.471  
 Humidity: 65.0%  
 Test Distance: 4.880m [K=1.0000]  
 Remarks:

ZONAL FLUX DIAGRAM

ZONAL FLUX DIAGRAM:

$\gamma$	C0	C45	C90	C135	C180	C225	C270	C315	$\gamma$	$\Phi$ zone	$\Phi$ total	%lum,lamp
10	453.6	445.4	435.0	432.3	444.7	435.4	433.1	439.0	0- 10	42.13	42.13	3.04,3.04
20	434.2	431.3	418.2	410.5	420.1	411.4	414.1	422.7	10- 20	121.5	163.6	11.8,11.8
30	404.2	404.1	389.1	376.2	382.2	374.5	382.8	394.8	20- 30	186.3	349.9	25.2,25.2
40	363.3	361.7	347.0	329.5	331.0	324.8	340.5	351.2	30- 40	228.7	578.6	41.7,41.7
50	309.5	305.9	291.1	269.9	267.2	263.3	284.8	293.1	40- 50	242.9	821.5	59.3,59.3
60	242.3	238.9	223.6	198.4	192.1	192.3	216.6	226.7	50- 60	224.3	1046	75.5,75.5
70	165.5	165.3	144.9	118.7	111.0	113.3	139.9	153.0	60- 70	174.2	1220	88,88
80	83.89	82.98	64.90	44.68	37.06	40.19	59.14	79.52	70- 80	102.6	1323	95.4,95.4
90	19.67	19.00	7.433	9.538	2.435	3.305	3.681	17.41	80- 90	34.54	1357	97.9,97.9
100	4.231	5.189	1.949	8.525	1.978	1.969	1.920	3.506	90-100	7.413	1365	98.5,98.5
110	2.092	3.429	2.267	8.046	2.377	2.464	2.435	2.754	100-110	4.304	1369	98.8,98.8
120	2.521	2.468	2.719	2.832	2.881	2.975	3.035	3.169	110-120	3.550	1373	99,99
130	3.023	3.001	3.245	3.382	3.405	3.509	3.566	3.611	120-130	3.184	1376	99.3,99.3
140	3.548	3.551	3.767	3.922	3.908	4.008	4.072	4.214	130-140	3.043	1379	99.5,99.5
150	4.087	4.091	6.045	4.551	4.377	4.457	4.534	5.000	140-150	2.860	1382	99.7,99.7
160	4.635	4.638	6.269	5.078	4.825	4.843	4.941	6.014	150-160	2.329	1384	99.9,99.9
170	5.074	5.049	6.319	5.582	5.197	5.159	5.324	6.854	160-170	1.523	1385	100,100
180	5.365	5.322	6.074	6.860	5.373	5.317	5.770	6.668	170-180	0.5473	1386	100,100
DEG	LUMINOUS INTENSITY:cd									UNIT:lm		

Conical surface Flux(90deg): 700.25 lm

%lum = 50.5%

%lamp = 50.5%

Conical surface Flux(120deg): 1045.8 lm

%lum = 75.5%

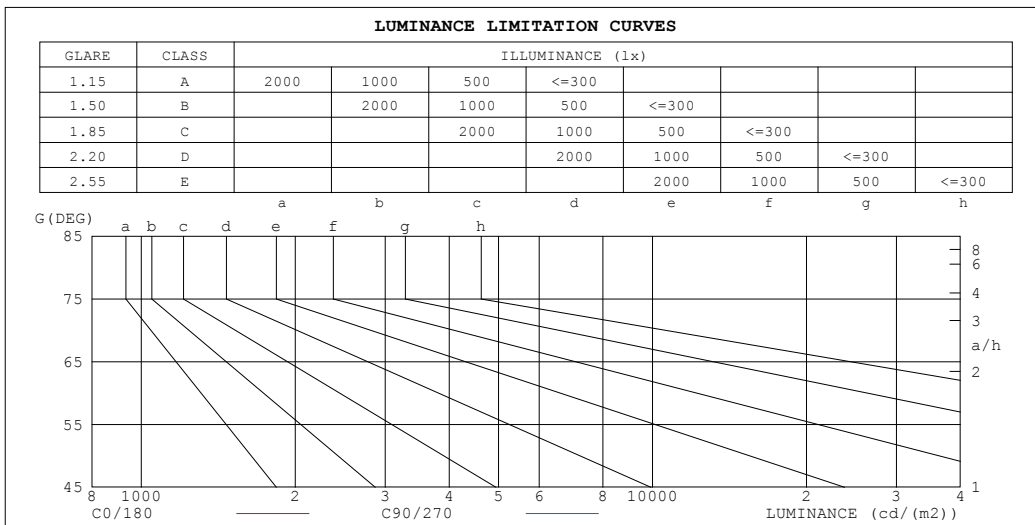
%lamp = 75.5%

C Range: 0 - 360DEG  
 C Interval: 15.0DEG  
 Test Speed: HIGH  
 Temperature:25.3°C  
 Operators:DAMIN  
 Test Date:2024-05-06

$\gamma$  Range: 0 - 180DEG  
 $\gamma$  Interval: 1.0DEG  
 Test System:EVERFINE GO-2000B\_V1 SYSTEM V2.00.471  
 Humidity:65.0%  
 Test Distance:4.880m [K=1.0000]  
 Remarks:

**LUMINANCE LIMITATION CURVES**

<b>NAME:</b> LED Strip	<b>TYPE:</b> Indoor lighting	<b>WEIGHT:</b> 75g
<b>SPEC.:</b> 2835 120LED	<b>DIM.:</b> 1000*8*1.2MM	<b>SERIAL No.:</b> 20240503028
<b>MFR.:</b> EVERFINE	<b>SUR.:</b> 1000*8MM	<b>Shielding Angle:</b>



LUMINANCE cd/(m2)		
G (DEG)	C0/180	C90/270
85	67539	46818
80	60391	46718
75	60125	50128
70	60498	52969
65	60642	54855
60	60573	55899
55	60446	56426
50	60184	56617
45	59770	56656

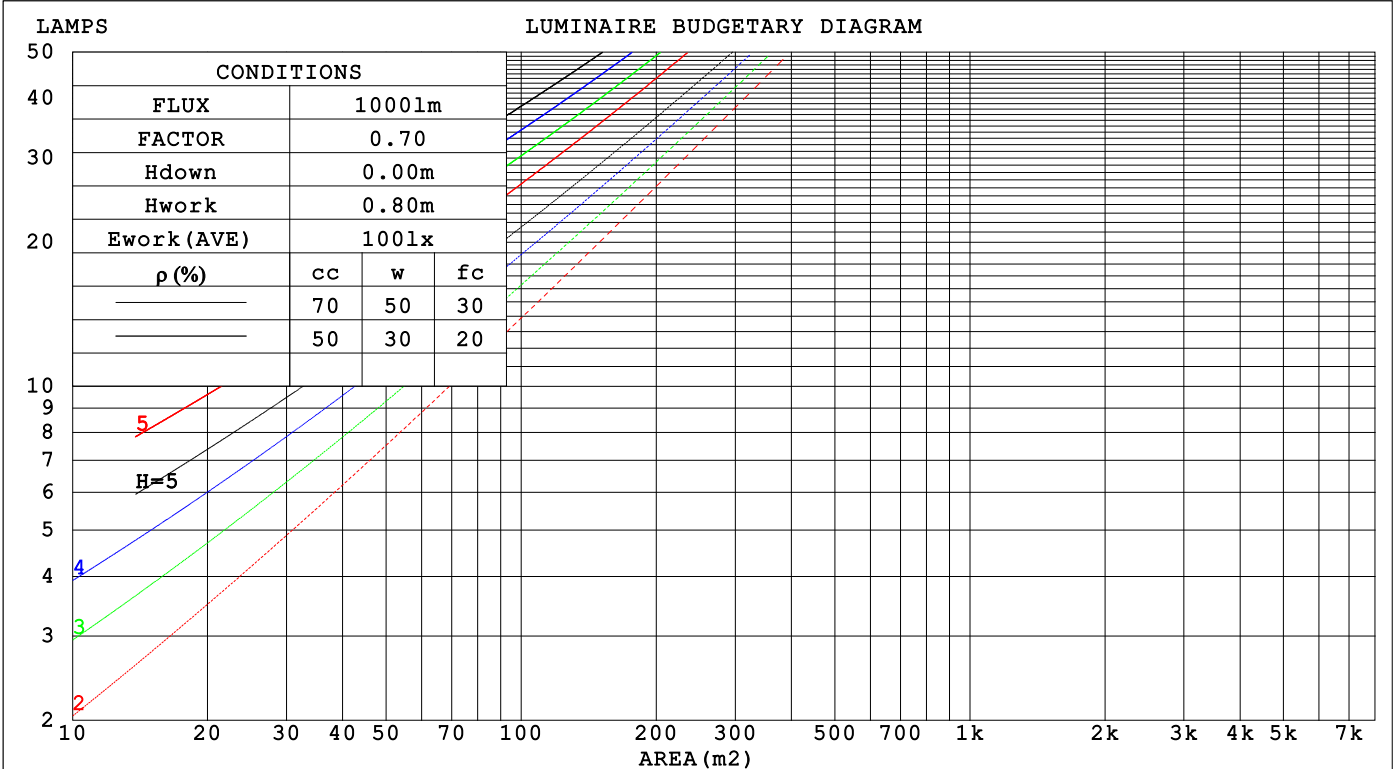
C Range: 0 - 360DEG  
 C Interval: 15.0DEG  
 Test Speed: HIGH  
 Temperature: 25.3°C  
 Operators: DAMIN  
 Test Date: 2024-05-06

γ Range: 0 - 180DEG  
 γ Interval: 1.0DEG  
 Test System: EVERFINE GO-2000B\_V1 SYSTEM V2.00.471  
 Humidity: 65.0%  
 Test Distance: 4.880m [K=1.0000]  
 Remarks:

**CU AND LUMINAIRE BUDGETARY ESTIMATE DIAGRAM**

NAME: LED Strip	TYPE: Indoor lighting	WEIGHT: 75g
SPEC.: 2835 120LED	DIM.: 1000*8*1.2MM	SERIAL No.: 20240503028
MFR.: EVERFINE	SUR.: 1000*8MM	Shielding Angle:

pcc	80%			70%			50%			30%			10%			0
pw	50%	30%	10%	50%	30%	10%	50%	30%	10%	50%	30%	10%	50%	30%	10%	0
pfc	20%			20%			20%			20%			20%			0
RCR	RCR:Room Cavity Ratio															
	Coefficients of Utilization(CU)															
0.0	1.19	1.19	1.19	1.16	1.16	1.16	1.10	1.10	1.10	1.05	1.05	1.05	1.00	1.00	1.00	.98
1.0	1.03	.98	.94	1.00	.96	.93	.96	.92	.89	.91	.89	.86	.87	.85	.83	.81
2.0	.89	.82	.76	.87	.81	.75	.83	.78	.73	.80	.75	.71	.76	.73	.69	.67
3.0	.78	.70	.63	.76	.69	.62	.73	.66	.61	.70	.64	.60	.67	.62	.58	.56
4.0	.69	.60	.53	.67	.59	.53	.65	.57	.52	.62	.56	.51	.60	.54	.50	.47
5.0	.61	.52	.45	.60	.52	.45	.58	.50	.44	.56	.49	.44	.53	.48	.43	.41
6.0	.55	.46	.40	.54	.46	.39	.52	.44	.39	.50	.43	.38	.48	.42	.38	.36
7.0	.50	.41	.35	.49	.41	.35	.47	.40	.34	.46	.39	.34	.44	.38	.33	.31
8.0	.45	.37	.31	.45	.36	.31	.43	.36	.30	.42	.35	.30	.40	.34	.30	.28
9.0	.42	.33	.28	.41	.33	.28	.40	.32	.27	.38	.32	.27	.37	.31	.27	.25
10.0	.38	.30	.25	.38	.30	.25	.37	.30	.25	.36	.29	.25	.35	.29	.24	.23



C Range: 0 - 360DEG  
 C Interval: 15.0DEG  
 Test Speed: HIGH  
 Temperature: 25.3°C  
 Operators: DAMIN  
 Test Date: 2024-05-06

γ Range: 0 - 180DEG  
 γ Interval: 1.0DEG  
 Test System: EVERFINE GO-2000B\_V1 SYSTEM V2.00.471  
 Humidity: 65.0%  
 Test Distance: 4.880m [K=1.0000]  
 Remarks:

**WEC AND CCEC**

NAME: LED Strip	TYPE: Indoor lighting	WEIGHT: 75g
SPEC.: 2835 120LED	DIM.: 1000*8*1.2MM	SERIAL No.: 20240503028
MFR.: EVERFINE	SUR.: 1000*8MM	Shielding Angle:

$\rho_{cc}$	80%			70%			50%			30%			10%			0
$\rho_w$	50%	30%	10%	50%	30%	10%	50%	30%	10%	50%	30%	10%	50%	30%	10%	0
$\rho_{fc}$	20%			20%			20%			20%			20%			0
RCR	RCR:Room Cavity Ratio						Wall Exitance Coefficients(WEC)									
0.0																
1.0	.321	.182	.058	.313	.178	.057	.298	.171	.055	.285	.164	.053	.273	.158	.051	
2.0	.299	.164	.050	.292	.161	.050	.279	.155	.048	.267	.150	.047	.256	.145	.046	
3.0	.275	.146	.044	.269	.144	.043	.258	.140	.042	.247	.135	.042	.237	.131	.041	
4.0	.253	.132	.039	.248	.130	.038	.238	.126	.038	.228	.122	.037	.219	.119	.036	
5.0	.233	.119	.034	.229	.117	.034	.220	.114	.034	.211	.111	.033	.203	.109	.033	
6.0	.216	.108	.031	.212	.107	.031	.204	.104	.030	.196	.102	.030	.189	.100	.030	
7.0	.201	.099	.028	.197	.098	.028	.190	.096	.028	.183	.094	.027	.176	.092	.027	
8.0	.187	.092	.026	.184	.091	.026	.177	.089	.025	.171	.087	.025	.165	.085	.025	
9.0	.175	.085	.024	.172	.084	.024	.166	.082	.023	.161	.081	.023	.156	.079	.023	
10.0	.165	.079	.022	.162	.078	.022	.157	.077	.022	.152	.075	.021	.147	.074	.021	

$\rho_{cc}$	80%			70%			50%			30%			10%			0
$\rho_w$	50%	30%	10%	50%	30%	10%	50%	30%	10%	50%	30%	10%	50%	30%	10%	0
$\rho_{fc}$	20%			20%			20%			20%			20%			0
RCR	RCR:Room Cavity Ratio						Ceiling Cavity Exitance Coefficients(CCEC)									
0.0	.206	.206	.206	.176	.176	.176	.120	.120	.120	.069	.069	.069	.022	.022	.022	
1.0	.197	.172	.149	.169	.148	.129	.115	.102	.089	.066	.059	.052	.021	.019	.017	
2.0	.189	.148	.113	.162	.127	.098	.111	.088	.068	.064	.051	.040	.021	.017	.013	
3.0	.182	.130	.090	.156	.113	.078	.107	.078	.055	.062	.046	.032	.020	.015	.011	
4.0	.174	.117	.074	.149	.101	.064	.103	.071	.045	.059	.041	.027	.019	.013	.009	
5.0	.167	.107	.063	.143	.093	.055	.099	.065	.039	.057	.038	.023	.018	.012	.008	
6.0	.159	.099	.055	.137	.085	.048	.095	.060	.034	.055	.035	.020	.018	.012	.007	
7.0	.153	.092	.049	.131	.080	.043	.091	.056	.030	.053	.033	.018	.017	.011	.006	
8.0	.146	.086	.045	.126	.075	.039	.087	.052	.028	.051	.031	.017	.016	.010	.005	
9.0	.140	.081	.041	.121	.070	.036	.083	.049	.026	.049	.029	.015	.016	.010	.005	
10.0	.134	.077	.039	.116	.067	.034	.080	.047	.024	.047	.028	.014	.015	.009	.005	

C Range: 0 - 360DEG  
 C Interval: 15.0DEG  
 Test Speed: HIGH  
 Temperature:25.3°C  
 Operators:DAMIN  
 Test Date:2024-05-06

$\gamma$  Range: 0 - 180DEG  
 $\gamma$  Interval: 1.0DEG  
 Test System:EVERFINE GO-2000B\_V1 SYSTEM V2.00.471  
 Humidity:65.0%  
 Test Distance:4.880m [K=1.0000]  
 Remarks:

**UGR(Unified Glare Rating) Table**

NAME: LED Strip	TYPE: Indoor lighting	WEIGHT: 75g
SPEC.: 2835 120LED	DIM.: 1000*8*1.2MM	SERIAL No.: 20240503028
MFR.: EVERFINE	SUR.: 1000*8MM	Shielding Angle:

ceiling/cavity	0.7	0.7	0.5	0.5	0.3	0.7	0.7	0.5	0.5	0.3
walls	0.5	0.3	0.5	0.3	0.3	0.5	0.3	0.5	0.3	0.3
working plane	0.2	0.2	0.2	0.2	0.2	0.2	0.2	0.2	0.2	0.2

Room dimensions	Viewed crosswise					Viewed endwise				
x = 2H y = 2H	26.4	27.9	26.7	28.1	28.4	26.1	27.6	26.4	27.8	28.1
3H	28.2	29.6	28.5	29.9	30.2	27.7	29.1	28.1	29.4	29.7
4H	29.0	30.3	29.3	30.6	30.9	28.4	29.8	28.8	30.0	30.3
6H	29.6	30.9	30.0	31.2	31.5	28.9	30.2	29.3	30.5	30.8
8H	29.9	31.1	30.3	31.4	31.8	29.1	30.3	29.5	30.6	31.0
12H	30.1	31.3	30.5	31.6	32.0	29.2	30.4	29.6	30.7	31.1
4H 2H	27.0	28.4	27.4	28.7	29.0	26.8	28.1	27.2	28.4	28.7
3H	29.1	30.2	29.5	30.6	30.9	28.7	29.8	29.1	30.2	30.5
4H	30.0	31.1	30.4	31.4	31.8	29.5	30.6	29.9	30.9	31.3
6H	30.8	31.8	31.3	32.2	32.6	30.1	31.1	30.6	31.5	31.9
8H	31.2	32.0	31.6	32.5	32.9	30.4	31.2	30.8	31.7	32.1
12H	31.5	32.3	31.9	32.7	33.1	30.5	31.4	31.0	31.8	32.2
8H 4H	30.3	31.2	30.8	31.6	32.1	29.9	30.8	30.3	31.2	31.6
6H	31.4	32.1	31.8	32.5	33.0	30.7	31.4	31.2	31.9	32.4
8H	31.8	32.5	32.3	32.9	33.4	31.0	31.7	31.5	32.2	32.7
12H	32.2	32.8	32.8	33.3	33.8	31.3	31.9	31.8	32.4	32.9
12H 4H	30.4	31.2	30.8	31.6	32.0	29.9	30.8	30.4	31.2	31.6
6H	31.4	32.1	31.9	32.6	33.0	30.8	31.5	31.3	32.0	32.4
8H	32.0	32.5	32.5	33.0	33.5	31.2	31.8	31.7	32.3	32.8

Variations with the observer position at spacings(CIE Pub.117):		
S = 1.0H	+ 0.1 / - 0.2	+ 0.1 / - 0.2
1.5H	+ 0.2 / - 0.3	+ 0.2 / - 0.4
2.0H	+ 0.1 / - 0.4	+ 0.2 / - 0.4

CIE Pub.117, 1386 lm Total Lamp Luminous Flux Correct (8log(F/F0) = 1.1)  
 Area: 0.008 m2

C Range: 0 - 360DEG  
 C Interval: 15.0DEG  
 Test Speed: HIGH  
 Temperature:25.3°C  
 Operators:DAMIN  
 Test Date:2024-05-06

γ Range: 0 - 180DEG  
 γ Interval: 1.0DEG  
 Test System:EVERFINE GO-2000B\_V1 SYSTEM V2.00.471  
 Humidity:65.0%  
 Test Distance:4.880m [K=1.0000]  
 Remarks:

**UTILIZATION FACTORS TABLE**

NAME: LED Strip	TYPE: Indoor lighting	WEIGHT: 75g
SPEC.: 2835 120LED	DIM.: 1000*8*1.2MM	SERIAL No.: 20240503028
MFR.: EVERFINE	SUR.: 1000*8MM	Shielding Angle:

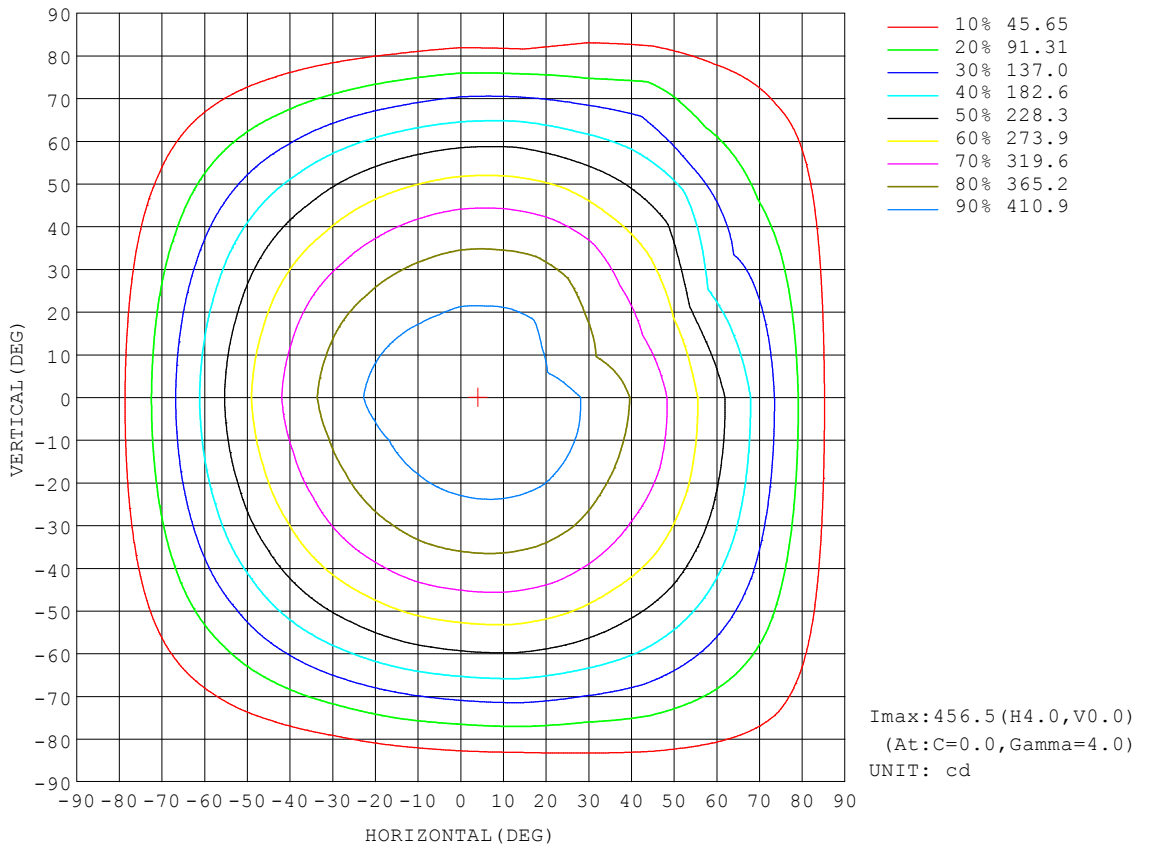
REFLECTANCE										
Ceiling	0.8	0.8	0.8	0.7	0.7	0.7	0.5	0.5	0.5	0
Walls	0.7	0.5	0.3	0.7	0.5	0.3	0.7	0.5	0.3	0
Working plane	0.2	0.2	0.2	0.2	0.2	0.2	0.2	0.2	0.2	0
ROOM INDEX	UTILIZATION FACTORS (PERCENT) $k(RI) \times RCR = 5$									
$k = 0.60$	56	44	37	55	44	37	54	43	37	30
0.80	66	54	46	65	53	46	63	53	46	39
1.00	74	63	55	73	62	55	70	63	54	47
1.25	81	71	63	80	70	63	77	68	62	54
1.50	86	76	69	85	75	68	81	73	67	59
2.00	93	85	78	91	83	77	88	81	75	67
2.50	97	89	83	95	88	82	91	85	80	71
3.00	101	94	88	99	92	87	94	89	84	75
4.00	105	99	94	102	97	93	98	93	90	80
5.00	108	102	98	105	100	96	100	96	93	83
ROOM INDEX	UF(total)									Direct
According to DIN EN 13032-2 2004			Suspended				SHRNOM = 1.25			

C Range: 0 - 360DEG  
 C Interval: 15.0DEG  
 Test Speed: HIGH  
 Temperature: 25.3°C  
 Operators: DAMIN  
 Test Date: 2024-05-06

$\gamma$  Range: 0 - 180DEG  
 $\gamma$  Interval: 1.0DEG  
 Test System: EVERFINE GO-2000B\_V1 SYSTEM V2.00.471  
 Humidity: 65.0%  
 Test Distance: 4.880m [K=1.0000]  
 Remarks:

ISOCANDELA DIAGRAM

NAME: LED Strip	TYPE: Indoor lighting	WEIGHT: 75g
SPEC.: 2835 120LED	DIM.: 1000*8*1.2MM	SERIAL No.: 20240503028
MFR.: EVERFINE	SUR.: 1000*8MM	Shielding Angle:



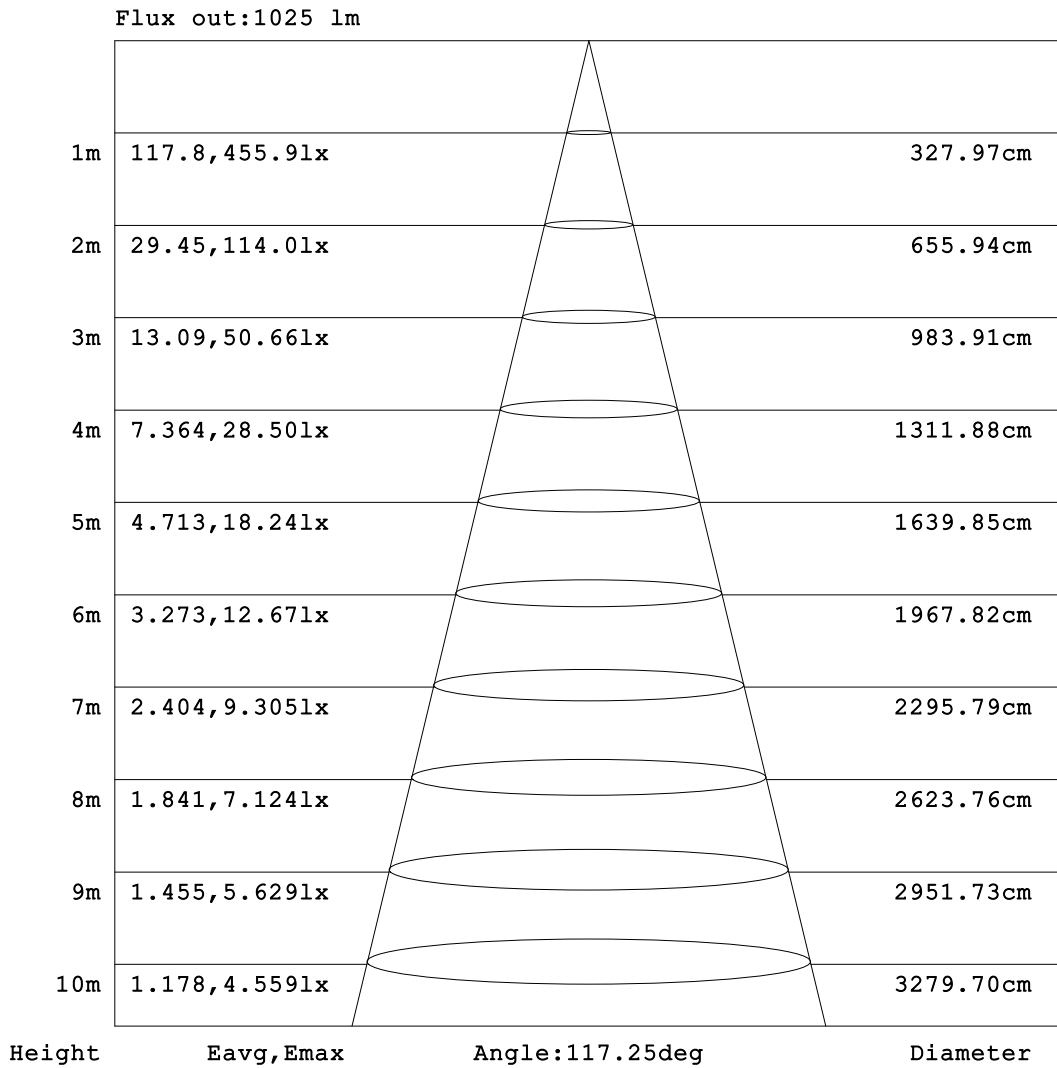
C Range: 0 - 360DEG  
 C Interval: 15.0DEG  
 Test Speed: HIGH  
 Temperature: 25.3°C  
 Operators: DAMIN  
 Test Date: 2024-05-06

γ Range: 0 - 180DEG  
 γ Interval: 1.0DEG  
 Test System: EVERFINE GO-2000B\_V1 SYSTEM V2.00.471  
 Humidity: 65.0%  
 Test Distance: 4.880m [K=1.0000]  
 Remarks:



**AAI Figure**

NAME: LED Strip	TYPE: Indoor lighting	WEIGHT: 75g
SPEC.: 2835 120LED	DIM.: 1000*8*1.2MM	SERIAL No.: 20240503028
MFR.: EVERFINE	SUR.: 1000*8MM	Shielding Angle:



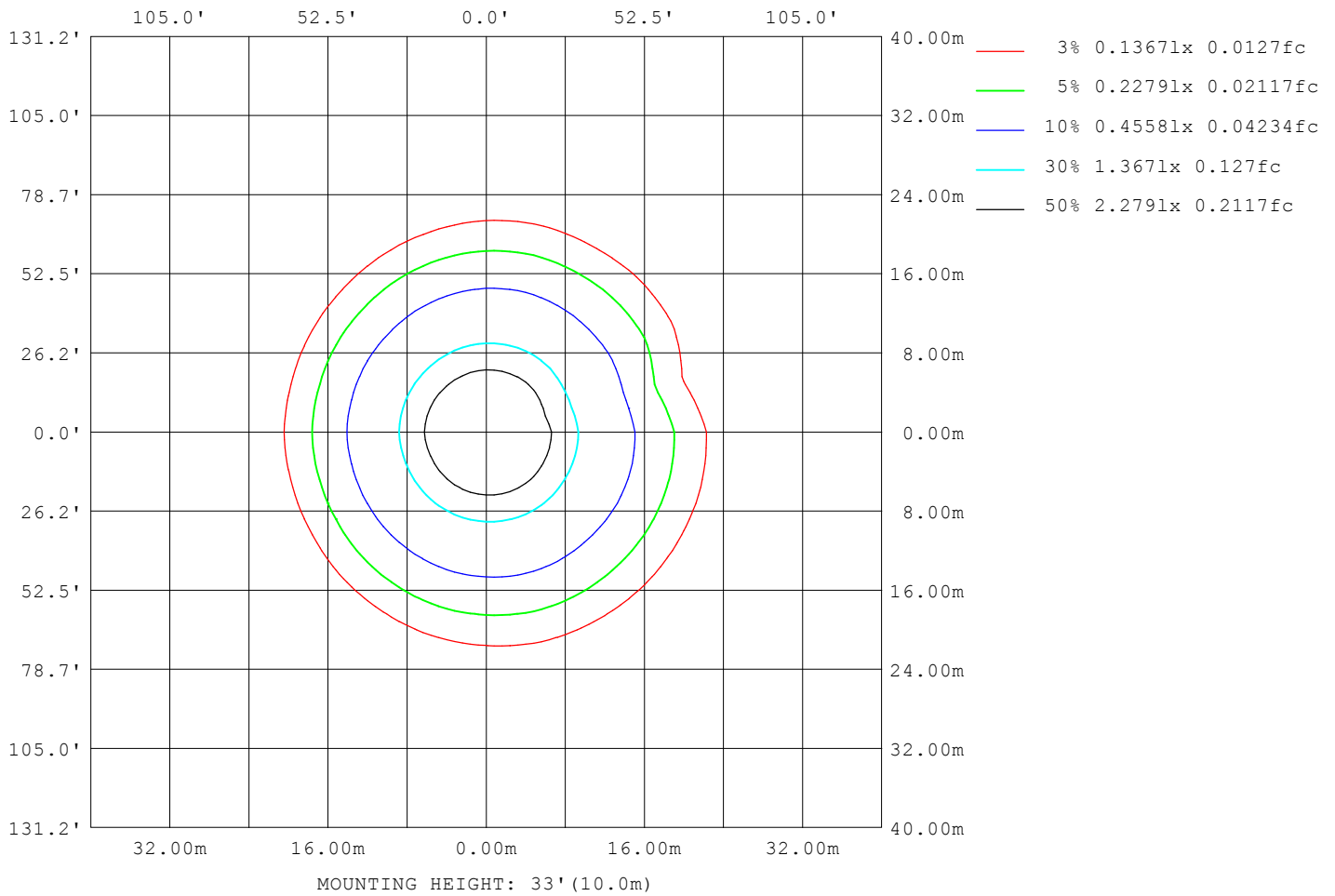
Note: The Curves indicate the illuminated area and the average illumination when the luminaire is at different distance.

C Range: 0 - 360DEG  
 C Interval: 15.0DEG  
 Test Speed: HIGH  
 Temperature: 25.3°C  
 Operators: DAMIN  
 Test Date: 2024-05-06

γ Range: 0 - 180DEG  
 γ Interval: 1.0DEG  
 Test System: EVERFINE GO-2000B\_V1 SYSTEM V2.00.471  
 Humidity: 65.0%  
 Test Distance: 4.880m [K=1.0000]  
 Remarks:

**ISOLUX DIAGRAM**

NAME: LED Strip	TYPE: Indoor lighting	WEIGHT: 75g
SPEC.: 2835 120LED	DIM.: 1000*8*1.2MM	SERIAL No.: 20240503028
MFR.: EVERFINE	SUR.: 1000*8MM	Shielding Angle:



C Range: 0 - 360DEG  
 C Interval: 15.0DEG  
 Test Speed: HIGH  
 Temperature: 25.3°C  
 Operators: DAMIN  
 Test Date: 2024-05-06

γ Range: 0 - 180DEG  
 γ Interval: 1.0DEG  
 Test System: EVERFINE GO-2000B\_V1 SYSTEM V2.00.471  
 Humidity: 65.0%  
 Test Distance: 4.880m [K=1.0000]  
 Remarks:

LED Avg.L Report

NAME: LED Strip	TYPE: Indoor lighting	WEIGHT: 75g
SPEC.: 2835 120LED	DIM.: 1000*8*1.2MM	SERIAL No.: 20240503028
MFR.: EVERFINE	SUR.: 1000*8MM	Shielding Angle:

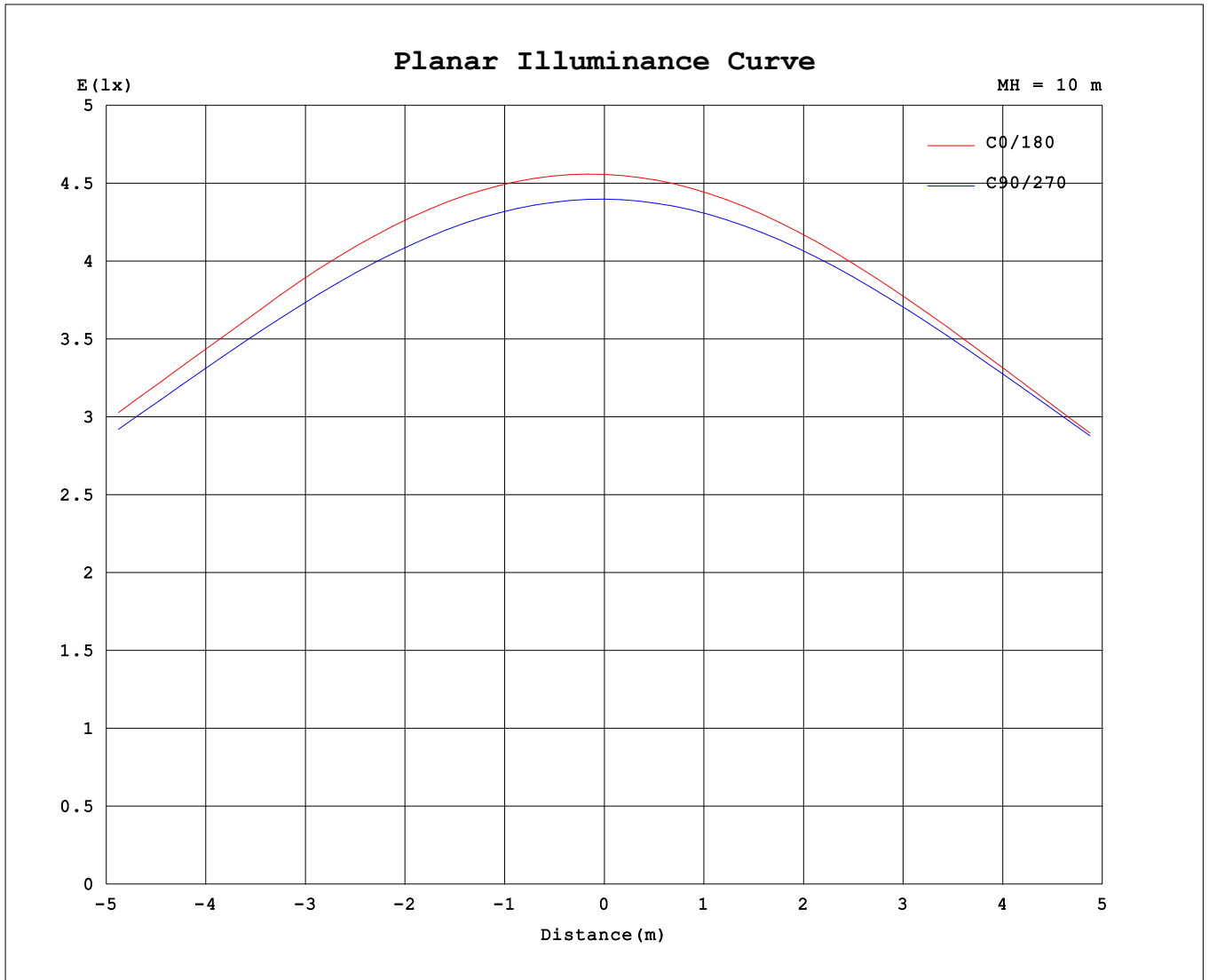
AvgL	cd/m2
L_0~180 (65) av	52741
L_0~180 (75) av	47400
L_0~180 (85) av	42650
L_90~270 (65) av	53858
L_90~270 (75) av	48857
L_90~270 (85) av	41738
L_45 (65) av	52457
L_45 (75) av	48015
L_45 (85) av	43800

Standard: GB/T 29293-2012

C Range: 0 - 360DEG  
 C Interval: 15.0DEG  
 Test Speed: HIGH  
 Temperature:25.3°C  
 Operators:DAMIN  
 Test Date:2024-05-06

γ Range: 0 - 180DEG  
 γ Interval: 1.0DEG  
 Test System:EVERFINE GO-2000B\_V1 SYSTEM V2.00.471  
 Humidity:65.0%  
 Test Distance:4.880m [K=1.0000]  
 Remarks:

**Planar Illuminance Curve**



C Range: 0 - 360DEG  
 C Interval: 15.0DEG  
 Test Speed: HIGH  
 Temperature: 25.3°C  
 Operators: DAMIN  
 Test Date: 2024-05-06

γ Range: 0 - 180DEG  
 γ Interval: 1.0DEG  
 Test System: EVERFINE GO-2000B\_V1 SYSTEM V2.00.471  
 Humidity: 65.0%  
 Test Distance: 4.880m [K=1.0000]  
 Remarks:

LUMINOUS DISTRIBUTION INTENSITY DATA

NAME: LED Strip	TYPE: Indoor lighting	WEIGHT: 75g
SPEC.: 2835 120LED	DIM.: 1000*8*1.2MM	SERIAL No.: 20240503028
MFR.: EVERFINE	SUR.: 1000*8MM	Shielding Angle:

Table--1

UNIT: cd

C (DEG) \ γ (DEG)	0	15	30	45	60	75	90	105	120	135	150	165	180	195	210	225	240	255	270
0	456	454	450	447	443	440	440	439	440	442	442	442	456	454	450	447	443	440	440
5	456	455	451	447	444	440	439	437	438	439	439	441	452	450	445	443	439	437	438
10	454	453	448	445	441	437	435	433	432	432	432	436	445	442	438	435	433	432	433
15	447	447	443	440	436	431	428	425	424	423	422	426	434	431	427	425	423	423	425
20	434	437	434	431	427	422	418	415	412	410	409	413	420	417	414	411	410	411	414
25	420	424	421	419	415	410	405	401	398	395	393	396	403	399	397	395	394	396	400
30	404	405	405	404	399	394	389	385	380	376	374	376	382	379	377	375	375	378	383
35	386	384	384	385	381	376	370	365	359	354	351	352	358	355	353	351	353	357	363
40	363	361	361	362	359	354	347	341	335	330	325	325	331	327	326	325	328	334	341
45	338	339	335	335	334	328	320	315	307	301	296	295	301	297	296	295	300	307	314
50	309	313	309	306	305	300	291	285	276	270	264	263	267	263	263	263	270	277	285
55	277	281	280	274	273	268	259	252	242	235	229	227	231	227	228	229	236	243	252
60	242	246	245	239	237	233	224	216	206	198	191	189	192	189	190	192	200	208	217
65	205	209	207	204	199	195	185	177	167	159	152	150	152	148	150	153	161	169	179
70	166	170	167	165	158	155	145	136	127	119	112	110	111	108	110	113	121	129	140
75	124	129	126	125	116	113	104	96.6	86.3	79.7	74.2	72.6	71.8	68.9	71.5	74.6	81.2	89.3	98.5
80	83.9	87.8	85.5	83.0	75.0	71.1	64.9	59.1	49.9	44.7	41.2	40.1	37.1	35.6	37.4	40.2	45.2	51.2	59.1
85	47.1	50.0	48.1	45.4	40.5	35.1	32.6	28.1	22.9	19.9	18.3	17.5	12.4	11.7	13.2	14.8	17.6	20.8	25.6
90	19.7	21.9	20.7	19.0	16.7	12.4	7.43	12.8	11.0	9.54	10.2	9.78	2.44	2.36	2.83	3.30	4.24	4.90	3.68
95	8.68	9.84	9.46	8.49	8.58	5.57	1.98	8.06	9.71	8.84	10.6	10.5	2.04	2.11	2.24	2.03	2.03	2.16	1.91
100	4.23	4.79	5.21	5.19	6.46	4.73	1.95	1.81	8.18	8.53	11.1	11.3	1.98	2.03	2.07	1.97	2.00	2.09	1.92
105	2.53	2.76	3.70	4.22	5.34	6.14	2.02	1.96	6.09	8.21	11.4	12.4	2.16	2.24	2.24	2.20	2.26	2.19	2.16
110	2.09	2.23	3.17	3.43	3.74	6.32	2.27	2.23	2.28	8.05	11.1	12.7	2.38	2.44	2.44	2.46	2.51	2.47	2.43
115	2.27	2.39	2.61	2.86	2.29	2.39	2.48	2.50	2.48	5.53	9.93	11.3	2.62	2.67	2.68	2.72	2.75	2.76	2.76
120	2.52	2.59	2.65	2.47	2.52	2.64	2.72	2.76	2.78	2.83	8.16	10.6	2.88	2.91	2.94	2.97	3.02	3.04	3.04
125	2.77	2.80	2.71	2.73	2.78	2.89	2.98	3.06	3.08	3.06	3.59	7.67	3.14	3.18	3.21	3.24	3.29	3.31	3.30
130	3.02	3.06	2.97	3.00	3.05	3.14	3.24	3.30	3.38	3.38	3.28	3.62	3.41	3.44	3.47	3.51	3.56	3.58	3.57
135	3.28	3.30	3.24	3.28	3.33	3.41	3.51	3.58	3.64	3.68	3.42	3.41	3.66	3.70	3.73	3.76	3.81	3.84	3.82
140	3.55	3.52	3.52	3.55	3.59	3.68	3.77	3.89	3.93	3.92	3.70	3.58	3.91	3.95	3.98	4.01	4.05	4.08	4.07
145	3.82	3.81	3.80	3.82	3.86	3.94	4.02	4.17	4.22	4.28	4.00	3.86	4.15	4.19	4.21	4.24	4.28	4.31	4.31
150	4.09	4.09	4.08	4.09	4.32	6.02	6.05	4.49	4.49	4.55	4.30	4.15	4.38	4.41	4.44	4.46	4.49	4.53	4.53
155	4.36	4.36	4.34	4.36	4.51	5.85	6.02	4.76	4.77	4.82	4.62	4.42	4.60	4.62	4.64	4.65	4.69	4.72	4.74
160	4.63	4.60	4.58	4.64	4.71	5.58	6.27	5.03	5.00	5.08	4.99	4.75	4.83	4.81	4.84	4.84	4.87	4.90	4.94
165	4.86	4.84	4.83	4.86	4.90	5.29	6.34	5.28	5.24	5.32	5.34	5.07	5.03	5.00	5.01	5.01	5.04	5.06	5.12
170	5.07	5.05	5.04	5.05	5.08	5.21	6.32	5.75	5.54	5.58	5.68	5.42	5.20	5.15	5.17	5.16	5.19	5.20	5.32
175	5.25	5.22	5.21	5.21	5.23	5.29	6.18	6.23	6.26	5.85	6.01	6.46	5.32	5.28	5.28	5.27	5.30	5.31	5.59
180	5.36	5.34	5.32	5.32	5.33	5.36	6.07	6.18	6.83	6.86	6.38	6.74	5.37	5.34	5.33	5.32	5.34	5.37	5.77

C Range: 0 - 360DEG  
 C Interval: 15.0DEG  
 Test Speed: HIGH  
 Temperature: 25.3°C  
 Operators: DAMIN  
 Test Date: 2024-05-06

γ Range: 0 - 180DEG  
 γ Interval: 1.0DEG  
 Test System: EVERFINE GO-2000B\_V1 SYSTEM V2.00.471  
 Humidity: 65.0%  
 Test Distance: 4.880m [K=1.0000]  
 Remarks:

LUMINOUS DISTRIBUTION INTENSITY DATA

NAME: LED Strip	TYPE: Indoor lighting	WEIGHT: 75g
SPEC.: 2835 120LED	DIM.: 1000*8*1.2MM	SERIAL No.: 20240503028
MFR.: EVERFINE	SUR.: 1000*8MM	Shielding Angle:

Table--2

UNIT: cd

C (DEG) \ γ (DEG)	285	300	315	330	345														
0	439	440	442	442	442														
5	438	440	442	440	439														
10	434	436	439	435	435														
15	426	430	433	427	426														
20	416	420	423	417	414														
25	403	407	410	402	397														
30	386	391	395	385	376														
35	367	373	373	363	358														
40	346	352	351	338	341														
45	320	325	325	317	317														
50	291	296	293	292	290														
55	259	261	260	261	250														
60	224	224	227	227	194														
65	186	187	193	191	155														
70	146	146	153	134	131														
75	101	109	119	96.0	105														
80	59.5	72.7	79.5	69.0	67.5														
85	27.9	38.3	42.1	37.4	41.7														
90	9.68	13.8	17.4	18.1	22.7														
95	3.24	5.59	7.00	9.76	10.9														
100	2.55	2.97	3.51	5.45	6.12														
105	2.32	2.63	2.80	3.67	4.23														
110	2.57	2.83	2.75	3.27	4.32														
115	2.79	2.89	2.99	3.58	4.59														
120	3.05	3.02	3.17	4.09	5.74														
125	3.32	3.31	3.38	4.95	6.80														
130	3.57	3.55	3.61	5.79	7.83														
135	3.83	3.81	3.92	6.72	8.76														
140	4.08	4.08	4.21	7.60	9.60														
145	4.33	4.34	4.55	8.43	10.3														
150	4.58	4.63	5.00	5.47	10.6														
155	4.83	4.94	5.50	5.95	10.2														
160	5.11	5.37	6.01	6.35	7.95														
165	5.43	5.88	6.55	6.77	7.43														
170	5.76	6.23	6.85	7.18	7.11														
175	6.18	6.52	7.04	7.12	6.94														
180	6.51	6.72	6.67	6.35	6.79														

C Range: 0 - 360DEG  
 C Interval: 15.0DEG  
 Test Speed: HIGH  
 Temperature:25.3℃  
 Operators:DAMIN  
 Test Date:2024-05-06

γ Range: 0 - 180DEG  
 γ Interval: 1.0DEG  
 Test System:EVERFINE GO-2000B\_V1 SYSTEM V2.00.471  
 Humidity:65.0%  
 Test Distance:4.880m [K=1.0000]  
 Remarks: