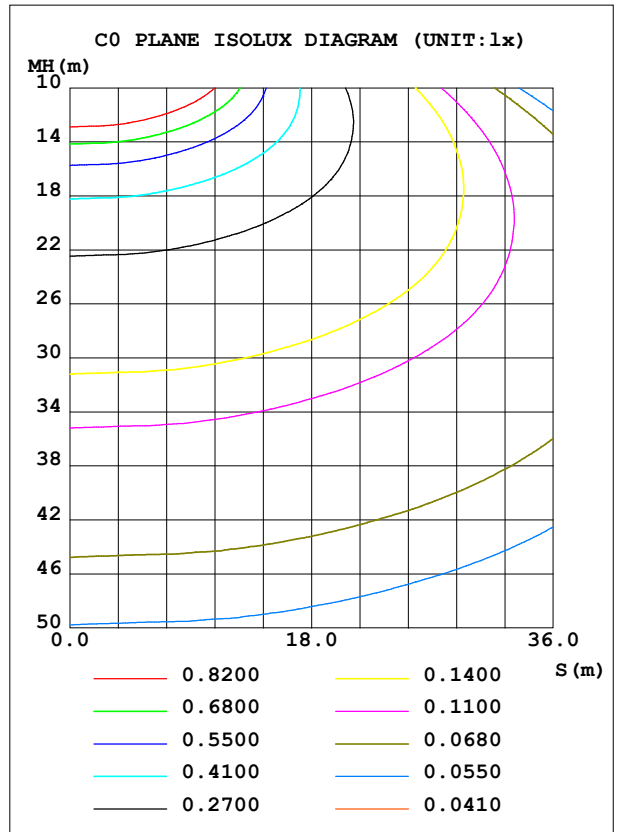
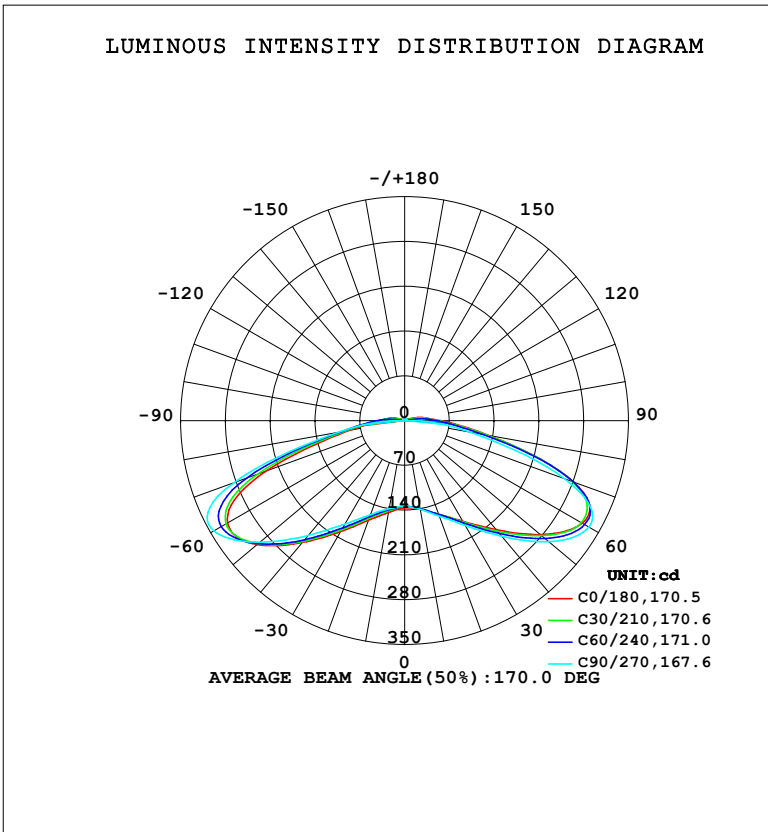


LUMINAIRE PHOTOMETRIC TEST REPORT

NAME: LED Strip	TYPE: Indoor lighting	WEIGHT: 75g
SPEC.: LED	DIM.: 1000*10*1.2MM	SERIAL No.: 20240423011
MFR.: EVERFINE	SUR.: 1000*10MM	Shielding Angle:

DATA OF LAMP		PHOTOMETRIC DATA			
MODEL: UR-S2-CV-HE-EP-A160 1m		Imax (cd)	355.2	S/MH (C0/180)	2.62
NOMINAL POWER (W)	12.863	LOR (%)	100.0	S/MH (C90/270)	2.69
RATED VOLTAGE (V)	DC 24V	TOTAL FLUX (lm)	1392.3	η UP, DN (C0-180)	1.9, 47.7
NOMINAL FLUX (lm)	1392.29	CIE CLASS	DIRECT	η UP, DN (C180-360)	1.9, 48.4
LAMPS INSIDE	1	η up (%)	3.8	CIBSE SHR NOM	2.00
TEST VOLTAGE (V)	DC 24V	η down (%)	96.2	CIBSE SHR MAX	2.00



C Range: 0 - 360DEG
 C Interval: 15.0DEG
 Test Speed: HIGH
 Temperature: 25.3°C
 Operators: DAMIN
 Test Date: 2024-04-24

γ Range: 0 - 180DEG
 γ Interval: 1.0DEG
 Test System: EVERFINE GO-2000B_V1 SYSTEM V2.00.471
 Humidity: 65.0%
 Test Distance: 4.880m [K=1.0000]
 Remarks:

ZONAL FLUX DIAGRAM

ZONAL FLUX DIAGRAM:

γ	C0	C45	C90	C135	C180	C225	C270	C315	γ	Φ zone	Φ total	%lum,lamp
10	141.1	139.6	140.8	142.8	146.0	142.5	140.0	138.6	0- 10	13.18	13.18	0.95,0.95
20	155.8	155.7	158.9	163.2	165.8	161.4	156.5	153.8	10- 20	42.54	55.72	4,4
30	181.6	183.2	189.2	196.3	200.3	196.3	186.7	180.6	20- 30	80.40	136.1	9.78,9.78
40	222.5	226.8	235.9	245.1	248.6	245.6	234.0	223.0	30- 40	133.1	269.2	19.3,19.3
50	277.2	281.1	294.1	301.4	301.3	299.6	295.7	283.3	40- 50	204.6	473.9	34,34
60	320.9	320.9	332.6	330.4	319.5	324.7	344.4	340.0	50- 60	282.6	756.4	54.3,54.3
70	281.3	282.0	266.3	236.4	229.4	250.0	283.9	301.9	60- 70	309.1	1066	76.5,76.5
80	132.5	129.4	102.7	88.43	87.79	95.30	104.8	133.2	70- 80	195.1	1261	90.5,90.5
90	56.69	51.64	10.28	40.03	39.30	41.95	7.589	53.93	80- 90	78.41	1339	96.2,96.2
100	28.91	22.54	2.855	17.33	23.24	18.00	2.709	23.15	90-100	30.93	1370	98.4,98.4
110	9.474	3.197	2.707	4.747	8.532	3.199	2.674	4.056	100-110	10.06	1380	99.1,99.1
120	2.968	2.662	2.805	2.839	3.063	2.720	2.811	2.876	110-120	3.409	1383	99.4,99.4
130	2.661	2.729	2.849	2.796	2.655	2.748	2.866	2.780	120-130	2.483	1386	99.5,99.5
140	2.736	2.872	2.981	2.873	2.737	2.858	2.971	2.863	130-140	2.172	1388	99.7,99.7
150	2.858	2.934	3.080	2.869	2.749	2.823	2.932	2.916	140-150	1.817	1390	99.8,99.8
160	2.845	2.839	2.903	2.747	2.681	2.704	2.792	2.811	150-160	1.321	1391	99.9,99.9
170	2.745	2.705	2.752	2.653	2.651	2.640	2.704	2.691	160-170	0.7762	1392	100,100
180	2.702	2.664	2.708	2.657	2.691	2.657	2.701	2.661	170-180	0.2556	1392	100,100
DEG	LUMINOUS INTENSITY:cd									UNIT:lm		

Conical surface Flux(90deg): 361.57 lm

%lum = 26.0%

%lamp = 26.0%

Conical surface Flux(120deg): 756.45 lm

%lum = 54.3%

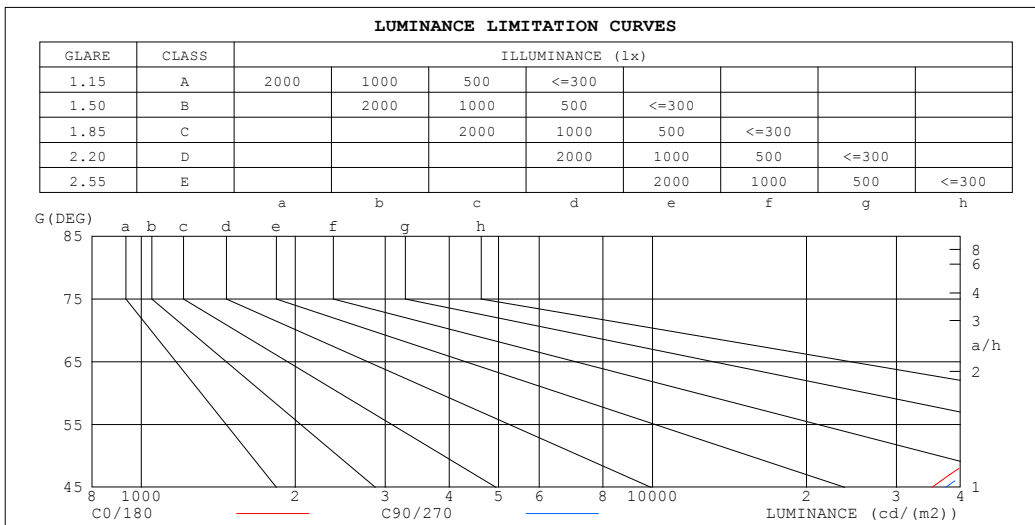
%lamp = 54.3%

C Range: 0 - 360DEG
 C Interval: 15.0DEG
 Test Speed: HIGH
 Temperature:25.3°C
 Operators:DAMIN
 Test Date:2024-04-24

γ Range: 0 - 180DEG
 γ Interval: 1.0DEG
 Test System:EVERFINE GO-2000B_V1 SYSTEM V2.00.471
 Humidity:65.0%
 Test Distance:4.880m [K=1.0000]
 Remarks:

LUMINANCE LIMITATION CURVES

NAME: LED Strip	TYPE: Indoor lighting	WEIGHT: 75g
SPEC.: LED	DIM.: 1000*10*1.2MM	SERIAL No.: 20240423011
MFR.: EVERFINE	SUR.: 1000*10MM	Shielding Angle:



LUMINANCE cd/(m2)		
G (DEG)	C0/180	C90/270
85	98911	63739
80	76322	59160
75	79653	68883
70	82251	77860
65	75548	75894
60	64179	66526
55	52826	55649
50	43129	45757
45	35217	37440

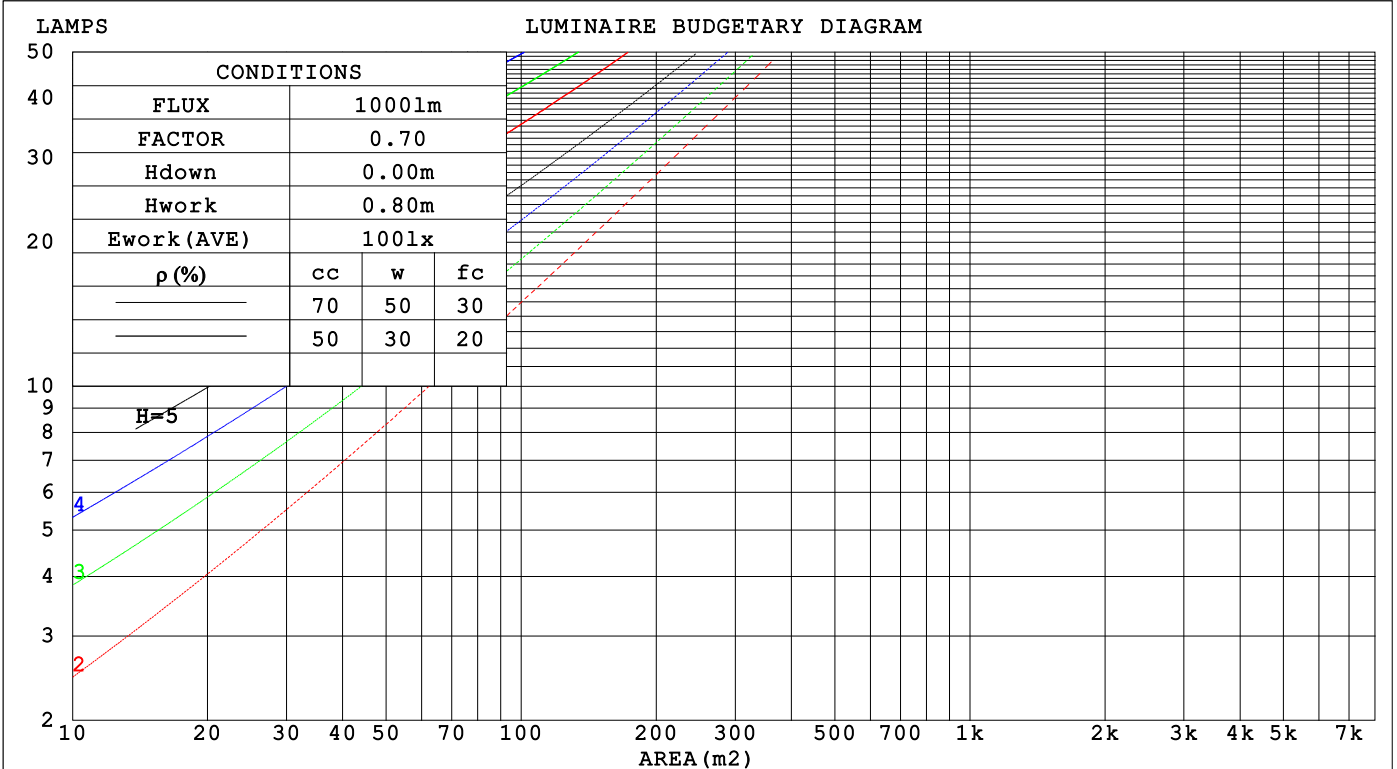
C Range: 0 - 360DEG
 C Interval: 15.0DEG
 Test Speed: HIGH
 Temperature: 25.3°C
 Operators: DAMIN
 Test Date: 2024-04-24

γ Range: 0 - 180DEG
 γ Interval: 1.0DEG
 Test System: EVERFINE GO-2000B_V1 SYSTEM V2.00.471
 Humidity: 65.0%
 Test Distance: 4.880m [K=1.0000]
 Remarks:

CU AND LUMINAIRE BUDGETARY ESTIMATE DIAGRAM

NAME: LED Strip	TYPE: Indoor lighting	WEIGHT: 75g
SPEC.: LED	DIM.: 1000*10*1.2MM	SERIAL No.: 20240423011
MFR.: EVERFINE	SUR.: 1000*10MM	Shielding Angle:

pcc	80%			70%			50%			30%			10%			0
pw	50%	30%	10%	50%	30%	10%	50%	30%	10%	50%	30%	10%	50%	30%	10%	0
pfc	20%			20%			20%			20%			20%			0
RCR	RCR:Room Cavity Ratio						Coefficients of Utilization(CU)									
0.0	1.18	1.18	1.18	1.15	1.15	1.15	1.09	1.09	1.09	1.04	1.04	1.04	.99	.99	.99	.96
1.0	.97	.91	.86	.94	.89	.84	.89	.85	.81	.84	.81	.77	.80	.77	.74	.72
2.0	.80	.71	.64	.78	.70	.63	.74	.67	.61	.70	.64	.59	.66	.61	.57	.54
3.0	.68	.57	.49	.66	.56	.48	.62	.54	.47	.58	.51	.45	.55	.49	.44	.41
4.0	.58	.47	.39	.56	.46	.38	.53	.44	.37	.50	.42	.36	.47	.40	.35	.32
5.0	.50	.39	.31	.49	.38	.31	.46	.37	.30	.43	.35	.29	.41	.34	.28	.26
6.0	.44	.33	.26	.43	.33	.25	.40	.31	.25	.38	.30	.24	.36	.29	.24	.21
7.0	.39	.29	.22	.38	.28	.21	.36	.27	.21	.34	.26	.20	.32	.25	.20	.18
8.0	.35	.25	.18	.34	.25	.18	.32	.24	.18	.31	.23	.17	.29	.22	.17	.15
9.0	.32	.22	.16	.31	.22	.16	.29	.21	.15	.28	.20	.15	.26	.20	.15	.13
10.0	.29	.20	.14	.28	.20	.14	.27	.19	.14	.25	.18	.13	.24	.18	.13	.11



C Range: 0 - 360DEG
 C Interval: 15.0DEG
 Test Speed: HIGH
 Temperature: 25.3°C
 Operators: DAMIN
 Test Date: 2024-04-24

γ Range: 0 - 180DEG
 γ Interval: 1.0DEG
 Test System: EVERFINE GO-2000B_V1 SYSTEM V2.00.471
 Humidity: 65.0%
 Test Distance: 4.880m [K=1.0000]
 Remarks:

WEC AND CCEC

NAME: LED Strip	TYPE: Indoor lighting	WEIGHT: 75g
SPEC.: LED	DIM.: 1000*10*1.2MM	SERIAL No.: 20240423011
MFR.: EVERFINE	SUR.: 1000*10MM	Shielding Angle:

ρ_{cc}	80%			70%			50%			30%			10%			0
ρ_w	50%	30%	10%	50%	30%	10%	50%	30%	10%	50%	30%	10%	50%	30%	10%	0
ρ_{fc}	20%			20%			20%			20%			20%			0
RCR	RCR:Room Cavity Ratio						Wall Exitance Coefficients (WEC)									
0.0																
1.0	.422	.240	.076	.414	.236	.075	.398	.228	.073	.383	.221	.071	.369	.214	.069	
2.0	.379	.208	.064	.372	.205	.063	.357	.199	.062	.344	.193	.060	.331	.187	.059	
3.0	.340	.181	.054	.333	.178	.054	.320	.173	.053	.308	.169	.052	.296	.164	.051	
4.0	.305	.159	.047	.299	.156	.046	.287	.152	.045	.276	.148	.045	.266	.145	.044	
5.0	.276	.141	.041	.270	.139	.040	.260	.135	.040	.250	.132	.039	.241	.129	.039	
6.0	.251	.126	.036	.246	.124	.036	.237	.121	.035	.228	.118	.035	.220	.116	.034	
7.0	.230	.114	.032	.226	.112	.032	.217	.110	.032	.209	.107	.031	.202	.105	.031	
8.0	.212	.104	.029	.208	.102	.029	.200	.100	.029	.193	.098	.028	.186	.096	.028	
9.0	.196	.095	.027	.193	.094	.026	.186	.092	.026	.179	.090	.026	.173	.088	.025	
10.0	.183	.088	.024	.179	.087	.024	.173	.085	.024	.167	.083	.024	.162	.081	.023	

ρ_{cc}	80%			70%			50%			30%			10%			0
ρ_w	50%	30%	10%	50%	30%	10%	50%	30%	10%	50%	30%	10%	50%	30%	10%	0
ρ_{fc}	20%			20%			20%			20%			20%			0
RCR	RCR:Room Cavity Ratio						Ceiling Cavity Exitance Coefficients (CCEC)									
0.0	.220	.220	.220	.188	.188	.188	.128	.128	.128	.074	.074	.074	.024	.024	.024	
1.0	.217	.185	.155	.186	.158	.133	.127	.109	.092	.073	.063	.054	.023	.020	.017	
2.0	.213	.161	.117	.183	.139	.101	.125	.096	.071	.072	.056	.041	.023	.018	.013	
3.0	.208	.144	.094	.178	.125	.082	.122	.087	.057	.071	.051	.034	.023	.016	.011	
4.0	.201	.132	.080	.172	.114	.069	.118	.080	.049	.068	.047	.029	.022	.015	.009	
5.0	.193	.122	.070	.166	.106	.061	.114	.074	.043	.066	.043	.026	.021	.014	.008	
6.0	.185	.114	.064	.159	.099	.056	.110	.069	.039	.064	.041	.023	.021	.013	.008	
7.0	.177	.108	.059	.153	.093	.051	.105	.066	.036	.061	.039	.022	.020	.013	.007	
8.0	.170	.102	.056	.146	.089	.048	.101	.062	.034	.059	.037	.020	.019	.012	.007	
9.0	.163	.097	.053	.140	.084	.046	.097	.059	.033	.057	.035	.020	.018	.011	.006	
10.0	.156	.093	.051	.135	.081	.044	.094	.057	.031	.055	.034	.019	.018	.011	.006	

C Range: 0 - 360DEG
 C Interval: 15.0DEG
 Test Speed: HIGH
 Temperature: 25.3°C
 Operators: DAMIN
 Test Date: 2024-04-24

γ Range: 0 - 180DEG
 γ Interval: 1.0DEG
 Test System: EVERFINE GO-2000B_V1 SYSTEM V2.00.471
 Humidity: 65.0%
 Test Distance: 4.880m [K=1.0000]
 Remarks:

UGR(Unified Glare Rating) Table

NAME: LED Strip		TYPE: Indoor lighting					WEIGHT: 75g				
SPEC.: LED		DIM.: 1000*10*1.2MM					SERIAL No.: 20240423011				
MFR.: EVERFINE		SUR.: 1000*10MM					Shielding Angle:				
ceiling/cavity		0.7	0.7	0.5	0.5	0.3	0.7	0.7	0.5	0.5	0.3
walls		0.5	0.3	0.5	0.3	0.3	0.5	0.3	0.5	0.3	0.3
working plane		0.2	0.2	0.2	0.2	0.2	0.2	0.2	0.2	0.2	0.2
Room dimensions		Viewed crosswise					Viewed endwise				
x = 2H y = 2H		26.6	28.3	26.9	28.6	28.9	26.8	28.5	27.1	28.8	29.1
	3H	29.6	31.2	29.9	31.5	31.9	29.6	31.3	30.0	31.6	31.9
	4H	30.6	32.2	31.0	32.6	32.9	30.5	32.1	30.9	32.5	32.8
	6H	31.4	32.9	31.8	33.3	33.6	31.1	32.6	31.5	32.9	33.3
	8H	31.7	33.1	32.1	33.5	33.9	31.3	32.7	31.7	33.1	33.5
	12H	32.0	33.4	32.4	33.8	34.2	31.4	32.8	31.9	33.2	33.6
	4H	27.7	29.3	28.1	29.6	30.0	27.8	29.4	28.2	29.8	30.1
	3H	30.7	32.1	31.1	32.5	32.9	30.7	32.1	31.1	32.5	32.9
	4H	31.8	33.1	32.3	33.6	34.0	31.8	33.0	32.2	33.5	33.9
	6H	32.7	33.9	33.2	34.3	34.8	32.4	33.6	32.9	34.0	34.5
	8H	33.1	34.1	33.5	34.6	35.1	32.7	33.8	33.2	34.2	34.7
	12H	33.4	34.4	33.9	34.9	35.4	32.9	33.9	33.4	34.4	34.9
	8H	32.3	33.4	32.7	33.8	34.3	32.2	33.3	32.7	33.7	34.2
	6H	33.3	34.2	33.8	34.7	35.2	33.0	34.0	33.5	34.4	35.0
	8H	33.8	34.6	34.3	35.1	35.6	33.4	34.3	34.0	34.8	35.3
	12H	34.3	35.0	34.8	35.5	36.1	33.8	34.5	34.4	35.1	35.6
	12H	32.3	33.3	32.8	33.8	34.3	32.2	33.2	32.7	33.7	34.2
	6H	33.4	34.2	33.9	34.7	35.3	33.2	34.0	33.7	34.5	35.0
	8H	33.9	34.7	34.5	35.2	35.7	33.6	34.3	34.2	34.8	35.4
Variations with the observer position at spacings(CIE Pub.117):											
S = 1.0H		+ 0.1 / - 0.1					+ 0.1 / - 0.1				
1.5H		+ 0.1 / - 0.2					+ 0.2 / - 0.2				
2.0H		+ 0.3 / - 0.4					+ 0.3 / - 0.5				

CIE Pub.117, 1392 lm Total Lamp Luminous Flux Correct (8log(F/F0) = 1.1)
 Area: 0.01 m2

C Range: 0 - 360DEG
 C Interval: 15.0DEG
 Test Speed: HIGH
 Temperature:25.3°C
 Operators:DAMIN
 Test Date:2024-04-24

γ Range: 0 - 180DEG
 γ Interval: 1.0DEG
 Test System:EVERFINE GO-2000B_V1 SYSTEM V2.00.471
 Humidity:65.0%
 Test Distance:4.880m [K=1.0000]
 Remarks:

UTILIZATION FACTORS TABLE

NAME: LED Strip	TYPE: Indoor lighting	WEIGHT: 75g
SPEC.: LED	DIM.: 1000*10*1.2MM	SERIAL No.: 20240423011
MFR.: EVERFINE	SUR.: 1000*10MM	Shielding Angle:

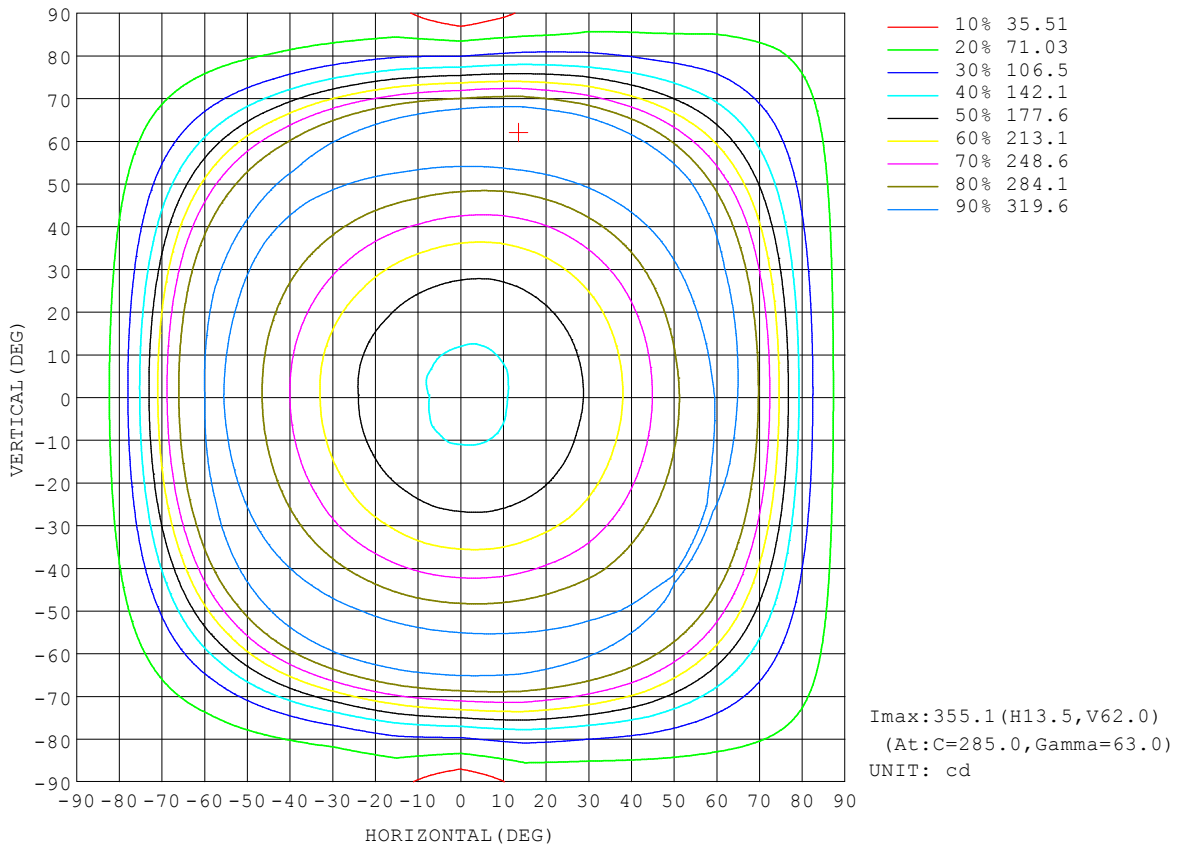
REFLECTANCE										
Ceiling	0.8	0.8	0.8	0.7	0.7	0.7	0.5	0.5	0.5	0
Walls	0.7	0.5	0.3	0.7	0.5	0.3	0.7	0.5	0.3	0
Working plane	0.2	0.2	0.2	0.2	0.2	0.2	0.2	0.2	0.2	0
ROOM INDEX	UTILIZATION FACTORS (PERCENT) $k(RI) \times RCR = 5$									
k = 0.60	43	29	21	42	29	21	41	28	21	13
0.80	53	38	29	52	38	29	49	37	28	20
1.00	61	47	37	60	46	37	57	48	37	27
1.25	69	55	46	67	54	45	64	53	44	35
1.50	75	62	52	73	61	52	69	58	50	41
2.00	84	72	63	82	70	62	77	68	60	50
2.50	89	78	70	87	77	69	82	74	67	56
3.00	94	84	76	91	82	75	86	79	73	62
4.00	99	91	85	97	89	83	91	85	80	69
5.00	103	96	90	100	94	88	95	89	85	74
ROOM INDEX	UF(total)									Direct
According to DIN EN 13032-2 2004			Suspended				SHRNOM = 1.25			

C Range: 0 - 360DEG
 C Interval: 15.0DEG
 Test Speed: HIGH
 Temperature: 25.3°C
 Operators: DAMIN
 Test Date: 2024-04-24

γ Range: 0 - 180DEG
 γ Interval: 1.0DEG
 Test System: EVERFINE GO-2000B_V1 SYSTEM V2.00.471
 Humidity: 65.0%
 Test Distance: 4.880m [K=1.0000]
 Remarks:

ISOCANDELA DIAGRAM

NAME: LED Strip	TYPE: Indoor lighting	WEIGHT: 75g
SPEC.: LED	DIM.: 1000*10*1.2MM	SERIAL No.: 20240423011
MFR.: EVERFINE	SUR.: 1000*10MM	Shielding Angle:

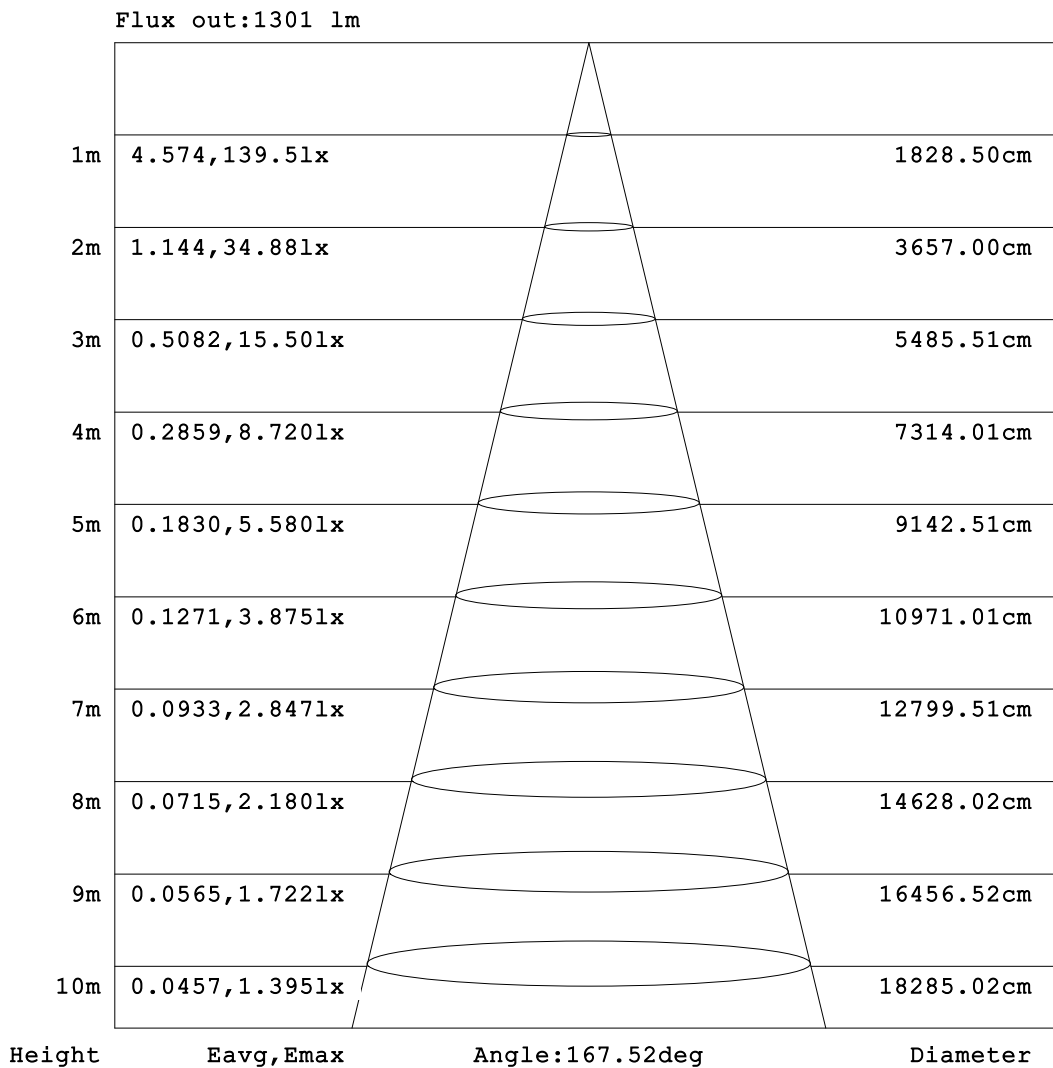


C Range: 0 - 360DEG
 C Interval: 15.0DEG
 Test Speed: HIGH
 Temperature: 25.3°C
 Operators: DAMIN
 Test Date: 2024-04-24

γ Range: 0 - 180DEG
 γ Interval: 1.0DEG
 Test System: EVERFINE GO-2000B_V1 SYSTEM V2.00.471
 Humidity: 65.0%
 Test Distance: 4.880m [K=1.0000]
 Remarks:

AAI Figure

NAME: LED Strip	TYPE: Indoor lighting	WEIGHT: 75g
SPEC.: LED	DIM.: 1000*10*1.2MM	SERIAL No.: 20240423011
MFR.: EVERFINE	SUR.: 1000*10MM	Shielding Angle:



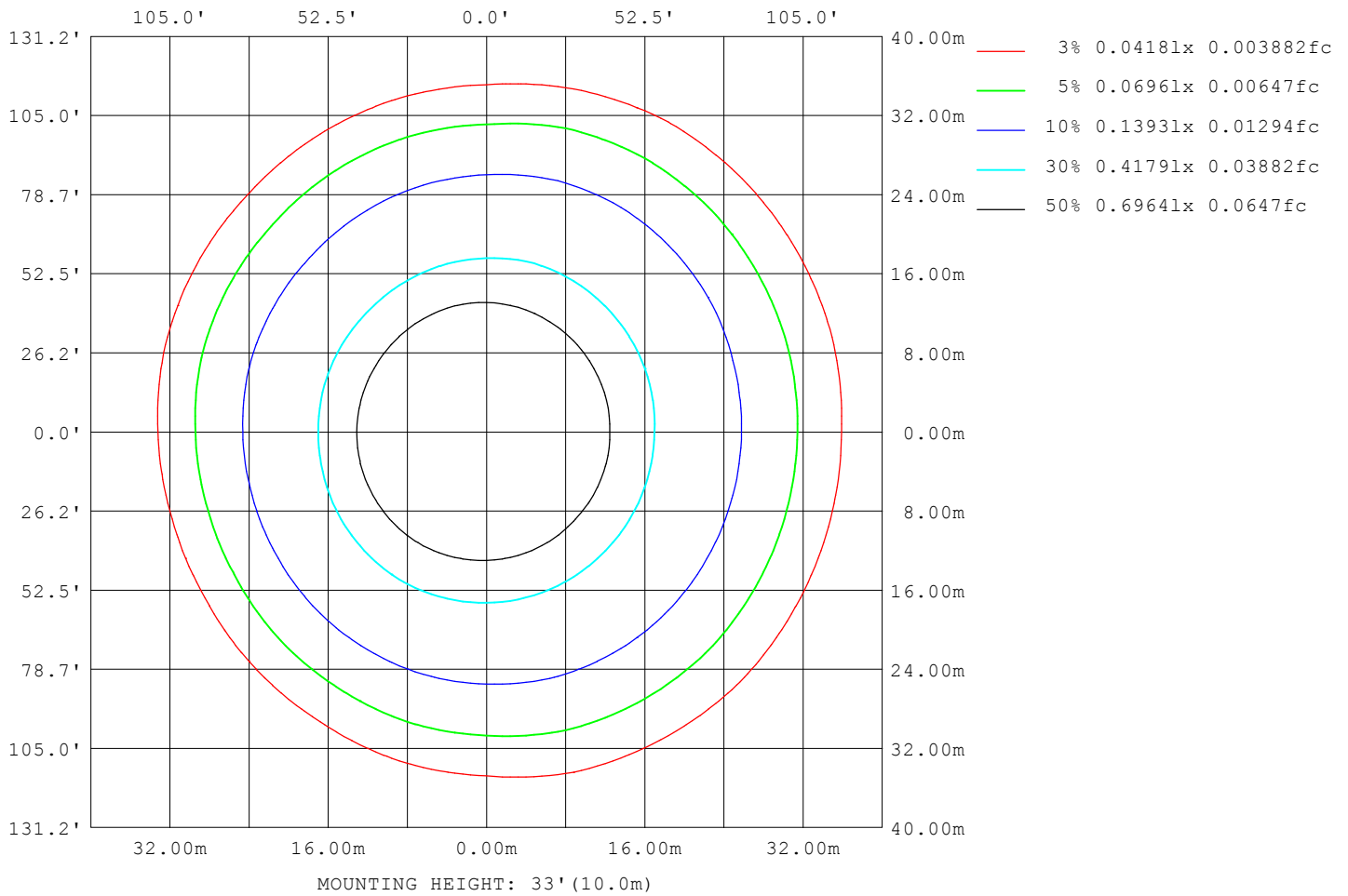
Note: The Curves indicate the illuminated area and the average illumination when the luminaire is at different distance.

C Range: 0 - 360DEG
 C Interval: 15.0DEG
 Test Speed: HIGH
 Temperature: 25.3°C
 Operators: DAMIN
 Test Date: 2024-04-24

γ Range: 0 - 180DEG
 γ Interval: 1.0DEG
 Test System: EVERFINE GO-2000B_V1 SYSTEM V2.00.471
 Humidity: 65.0%
 Test Distance: 4.880m [K=1.0000]
 Remarks:

ISOLUX DIAGRAM

NAME: LED Strip	TYPE: Indoor lighting	WEIGHT: 75g
SPEC.: LED	DIM.: 1000*10*1.2MM	SERIAL No.: 20240423011
MFR.: EVERFINE	SUR.: 1000*10MM	Shielding Angle:



C Range: 0 - 360DEG
 C Interval: 15.0DEG
 Test Speed: HIGH
 Temperature: 25.3°C
 Operators: DAMIN
 Test Date: 2024-04-24

γ Range: 0 - 180DEG
 γ Interval: 1.0DEG
 Test System: EVERFINE GO-2000B_V1 SYSTEM V2.00.471
 Humidity: 65.0%
 Test Distance: 4.880m [K=1.0000]
 Remarks:

LED Avg.L Report

NAME: LED Strip	TYPE: Indoor lighting	WEIGHT: 75g
SPEC.: LED	DIM.: 1000*10*1.2MM	SERIAL No.: 20240423011
MFR.: EVERFINE	SUR.: 1000*10MM	Shielding Angle:

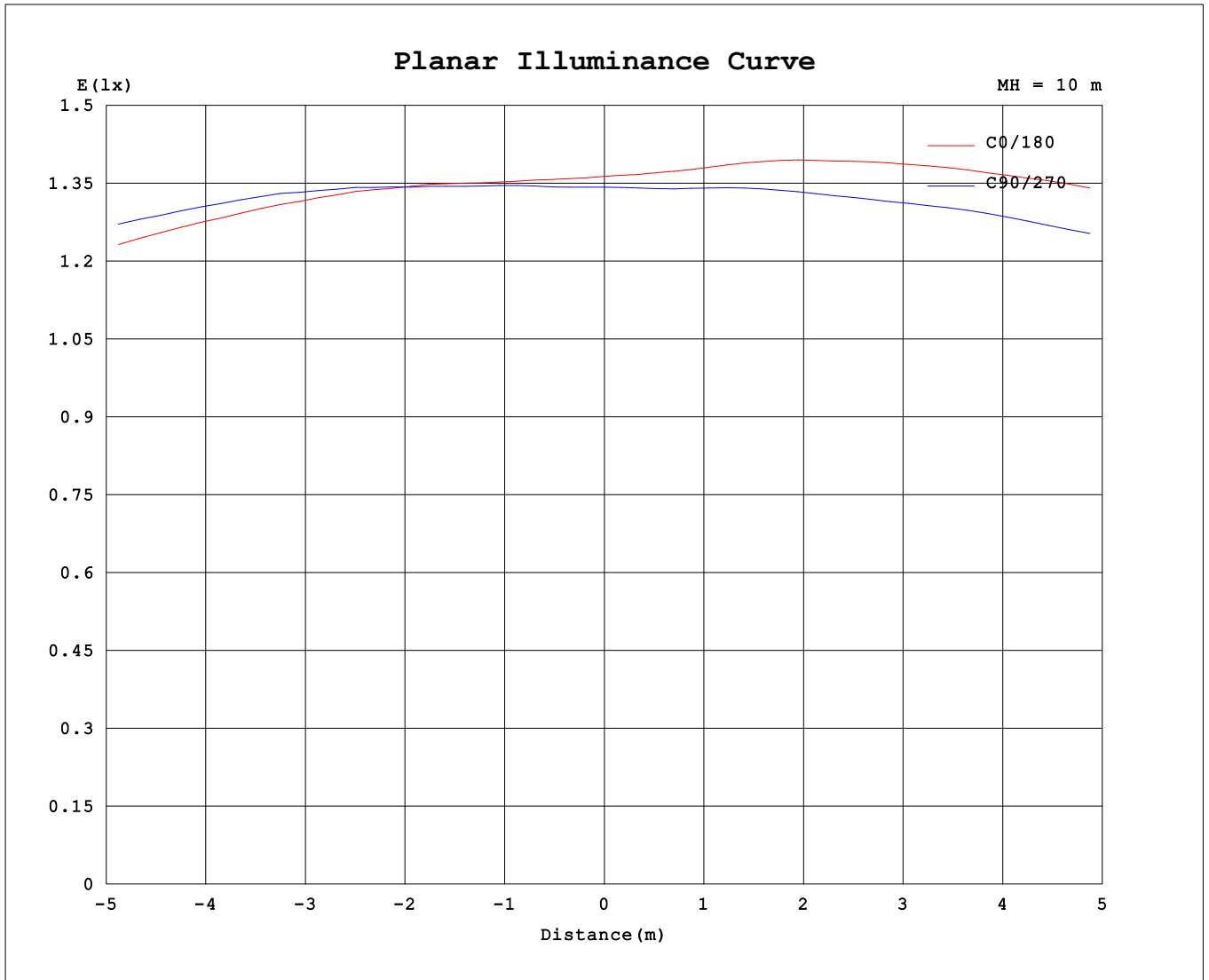
AvgL	cd/m2
L_0~180 (65) av	72554
L_0~180 (75) av	67863
L_0~180 (85) av	81615
L_90~270 (65) av	78066
L_90~270 (75) av	70120
L_90~270 (85) av	63580
L_45 (65) av	75239
L_45 (75) av	71409
L_45 (85) av	81009

Standard: GB/T 29293-2012

C Range: 0 - 360DEG
 C Interval: 15.0DEG
 Test Speed: HIGH
 Temperature:25.3℃
 Operators:DAMIN
 Test Date:2024-04-24

γ Range: 0 - 180DEG
 γ Interval: 1.0DEG
 Test System:EVERFINE GO-2000B_V1 SYSTEM V2.00.471
 Humidity:65.0%
 Test Distance:4.880m [K=1.0000]
 Remarks:

Planar Illuminance Curve



C Range: 0 - 360DEG
 C Interval: 15.0DEG
 Test Speed: HIGH
 Temperature: 25.3°C
 Operators: DAMIN
 Test Date: 2024-04-24

γ Range: 0 - 180DEG
 γ Interval: 1.0DEG
 Test System: EVERFINE GO-2000B_V1 SYSTEM V2.00.471
 Humidity: 65.0%
 Test Distance: 4.880m [K=1.0000]
 Remarks:

LUMINOUS DISTRIBUTION INTENSITY DATA

NAME: LED Strip	TYPE: Indoor lighting	WEIGHT: 75g
SPEC.: LED	DIM.: 1000*10*1.2MM	SERIAL No.: 20240423011
MFR.: EVERFINE	SUR.: 1000*10MM	Shielding Angle:

Table--1

UNIT: cd

C (DEG) \ γ (DEG)	0	15	30	45	60	75	90	105	120	135	150	165	180	195	210	225	240	255	270
0	136	136	135	134	134	134	134	134	134	134	135	136	136	136	135	134	134	134	134
5	137	137	136	136	136	136	136	136	137	137	138	139	139	138	137	137	136	136	136
10	141	141	140	140	140	140	141	141	142	143	144	145	146	144	143	142	141	141	140
15	147	148	147	146	147	148	149	149	151	152	153	154	154	153	151	150	149	148	146
20	156	156	156	156	156	157	159	160	162	163	165	165	166	164	162	161	160	158	156
25	167	168	167	167	168	170	172	174	176	178	180	181	181	179	178	177	175	172	169
30	182	183	183	183	185	186	189	191	195	196	199	200	200	198	197	196	194	191	187
35	200	202	202	203	205	207	211	213	217	219	222	223	223	220	220	219	216	213	208
40	222	224	226	227	230	232	236	239	243	245	248	249	249	247	246	246	243	240	234
45	249	251	252	254	258	261	265	268	271	274	276	277	276	275	274	274	272	269	264
50	277	278	280	281	287	290	294	297	301	301	302	302	301	300	299	300	299	299	296
55	303	303	304	306	311	315	319	322	325	324	322	320	319	319	318	318	321	325	325
60	321	319	319	321	325	330	333	334	335	330	326	321	320	322	322	325	331	339	344
65	319	315	315	317	320	323	321	318	313	306	298	293	294	300	302	306	317	329	339
70	281	279	279	282	281	278	266	258	246	236	227	225	229	240	245	250	263	275	284
75	206	206	207	209	203	198	178	171	157	150	141	141	145	154	157	163	171	180	185
80	133	131	130	129	122	120	103	104	92.8	88.4	84.7	85.0	87.8	92.6	94.0	95.3	101	106	105
85	86.2	83.5	81.4	79.4	76.4	75.9	55.6	68.9	59.6	57.0	55.0	55.1	56.1	58.5	58.9	60.3	64.4	68.3	55.3
90	56.7	54.0	52.6	51.6	49.9	47.2	10.3	44.5	41.5	40.0	38.8	38.8	39.3	40.8	41.1	41.9	43.3	43.2	7.59
95	39.2	38.0	37.3	36.5	33.6	14.4	3.37	15.0	26.1	29.1	29.1	29.4	30.1	31.0	31.1	30.8	28.6	11.3	3.22
100	28.9	28.1	26.6	22.5	9.77	2.97	2.86	3.65	10.4	17.3	20.1	21.7	23.2	23.1	22.3	18.0	8.28	2.85	2.71
105	18.6	17.4	13.8	7.49	3.09	2.77	2.58	2.86	4.62	8.82	11.0	13.5	15.5	14.0	11.9	6.67	2.92	2.67	2.54
110	9.47	7.72	5.07	3.20	2.71	2.66	2.71	2.68	2.97	4.75	5.90	7.29	8.53	7.11	5.47	3.20	2.66	2.63	2.67
115	4.49	3.65	3.01	2.69	2.64	2.70	2.76	2.76	2.78	3.26	3.83	4.26	4.62	3.83	3.19	2.73	2.73	2.73	2.77
120	2.97	2.78	2.70	2.66	2.67	2.75	2.81	2.81	2.79	2.84	3.05	3.22	3.06	2.87	2.72	2.72	2.78	2.78	2.81
125	2.68	2.67	2.65	2.69	2.72	2.78	2.82	2.84	2.81	2.80	2.77	2.78	2.71	2.69	2.69	2.74	2.79	2.80	2.83
130	2.66	2.69	2.68	2.73	2.76	2.82	2.85	2.87	2.83	2.80	2.74	2.70	2.66	2.67	2.70	2.75	2.81	2.83	2.87
135	2.67	2.72	2.73	2.79	2.83	2.89	2.91	2.93	2.88	2.83	2.76	2.72	2.69	2.69	2.73	2.80	2.84	2.88	2.92
140	2.74	2.79	2.81	2.87	2.91	2.96	2.98	3.00	2.93	2.87	2.80	2.77	2.74	2.73	2.78	2.86	2.88	2.92	2.97
145	2.81	2.88	2.88	2.93	2.96	3.01	3.09	3.04	2.95	2.89	2.84	2.79	2.75	2.76	2.79	2.90	2.88	2.93	2.97
150	2.86	2.90	2.91	2.93	2.99	3.04	3.08	3.01	2.94	2.87	2.84	2.79	2.75	2.76	2.77	2.82	2.84	2.90	2.93
155	2.87	2.88	2.90	2.90	2.95	2.97	3.00	2.94	2.86	2.82	2.81	2.76	2.72	2.72	2.72	2.76	2.78	2.84	2.87
160	2.84	2.83	2.84	2.84	2.87	2.88	2.90	2.84	2.78	2.75	2.75	2.71	2.68	2.68	2.67	2.70	2.72	2.77	2.79
165	2.80	2.77	2.78	2.77	2.79	2.80	2.82	2.76	2.71	2.69	2.70	2.68	2.65	2.64	2.64	2.66	2.67	2.71	2.73
170	2.74	2.72	2.72	2.71	2.73	2.73	2.75	2.71	2.67	2.65	2.67	2.67	2.65	2.63	2.63	2.64	2.65	2.68	2.70
175	2.71	2.68	2.68	2.67	2.69	2.69	2.72	2.69	2.65	2.65	2.66	2.67	2.66	2.64	2.64	2.64	2.65	2.67	2.70
180	2.70	2.68	2.67	2.66	2.68	2.68	2.71	2.69	2.65	2.66	2.67	2.69	2.69	2.67	2.67	2.66	2.67	2.68	2.70

C Range: 0 - 360DEG
 C Interval: 15.0DEG
 Test Speed: HIGH
 Temperature: 25.3°C
 Operators: DAMIN
 Test Date: 2024-04-24

γ Range: 0 - 180DEG
 γ Interval: 1.0DEG
 Test System: EVERFINE GO-2000B_V1 SYSTEM V2.00.471
 Humidity: 65.0%
 Test Distance: 4.880m [K=1.0000]
 Remarks:

LUMINOUS DISTRIBUTION INTENSITY DATA

NAME: LED Strip	TYPE: Indoor lighting	WEIGHT: 75g
SPEC.: LED	DIM.: 1000*10*1.2MM	SERIAL No.: 20240423011
MFR.: EVERFINE	SUR.: 1000*10MM	Shielding Angle:

Table--2

UNIT: cd

C (DEG) \ γ (DEG)	285	300	315	330	345														
0	134	134	134	135	136														
5	134	135	135	136	136														
10	139	138	139	139	140														
15	145	145	145	146	147														
20	154	154	154	154	155														
25	167	166	166	166	167														
30	183	181	181	180	181														
35	203	201	199	199	199														
40	228	225	223	222	222														
45	258	254	252	250	249														
50	290	286	283	280	279														
55	324	319	315	310	308														
60	350	346	340	334	328														
65	351	350	343	334	324														
70	302	306	302	294	286														
75	202	216	217	216	214														
80	119	129	133	138	137														
85	68.8	79.1	85.7	88.4	89.2														
90	40.5	50.4	53.9	56.9	58.2														
95	18.7	27.7	36.3	39.0	39.9														
100	3.32	14.7	23.2	27.3	29.0														
105	2.89	3.93	10.1	15.3	18.3														
110	2.65	3.05	4.06	6.75	9.13														
115	2.70	3.00	2.91	3.50	4.23														
120	2.75	2.77	2.88	2.79	2.88														
125	2.77	2.75	2.83	2.78	2.73														
130	2.81	2.78	2.78	2.78	2.73														
135	2.88	2.83	2.79	2.77	2.76														
140	2.93	2.90	2.86	2.85	2.82														
145	2.95	2.93	2.91	2.89	2.89														
150	2.94	2.92	2.92	2.90	2.91														
155	2.87	2.86	2.88	2.88	2.90														
160	2.80	2.79	2.81	2.82	2.84														
165	2.73	2.72	2.74	2.75	2.79														
170	2.69	2.67	2.69	2.70	2.74														
175	2.67	2.66	2.66	2.67	2.71														
180	2.67	2.65	2.66	2.67	2.70														

C Range: 0 - 360DEG
 C Interval: 15.0DEG
 Test Speed: HIGH
 Temperature:25.3°C
 Operators:DAMIN
 Test Date:2024-04-24

γ Range: 0 - 180DEG
 γ Interval: 1.0DEG
 Test System:EVERFINE GO-2000B_V1 SYSTEM V2.00.471
 Humidity:65.0%
 Test Distance:4.880m [K=1.0000]
 Remarks: