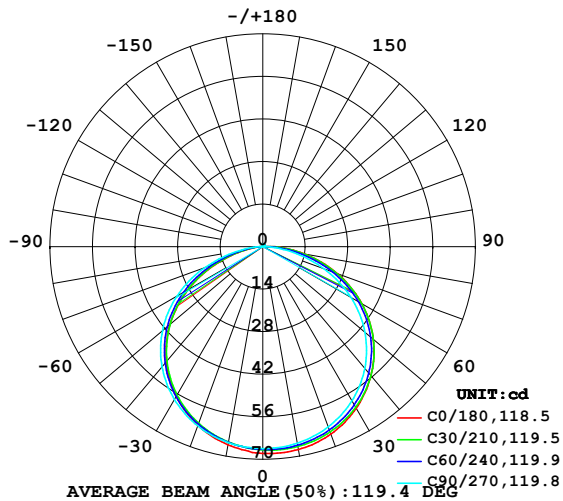


LUMINAIRE PHOTOMETRIC TEST REPORT

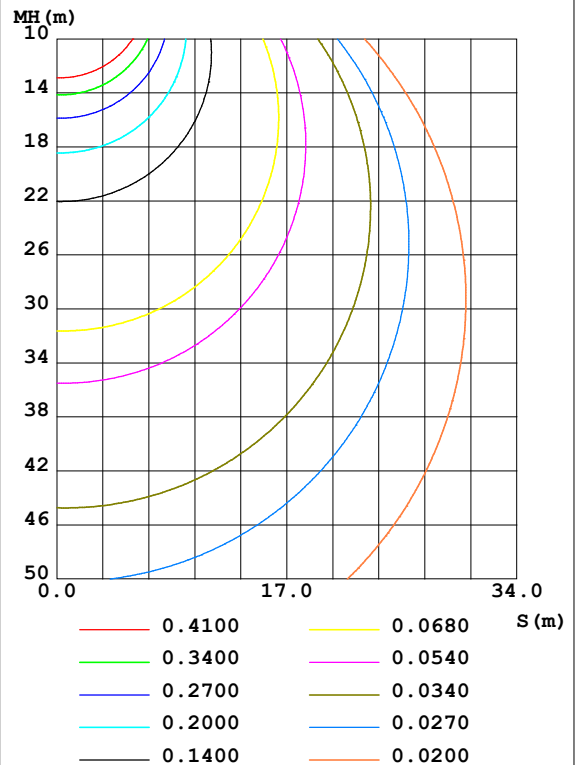
NAME: LED Strip	TYPE: Indoor lighting	WEIGHT: 20g
SPEC.: 2835 084LED	DIM.: 500*12*1.2mm	SERIAL No.: 20211123004
MFR.: EVERFINE	SUR.: 500*12*1.2mm	Shielding Angle:

DATA OF LAMP		PHOTOMETRIC DATA Eff: 103.32 lm/W			
W-FLS102T2334084B-48(WCP)-60M-HR-TR-EP		Imax(cd)	68.20	S/MH(C0/180)	1.25
NOMINAL POWER(W)	2.02301	LOR(%)	100.0	S/MH(C90/270)	1.30
RATED VOLTAGE(V)	DC 48	TOTAL FLUX(lm)	209.02	□ UP,DN(C0-180)	0.8,50.5
NOMINAL FLUX(lm)	209.023	CIE CLASS	DIRECT	□ UP,DN(C180-360)	0.7,48.0
LAMPS INSIDE	1	□ up(%)	1.5	CIBSE SHR NOM	1.25
TEST VOLTAGE(V)	DC 48	□ down(%)	98.5	CIBSE SHR MAX	1.35

LUMINOUS INTENSITY DISTRIBUTION DIAGRAM



C0 PLANE ISOLUX DIAGRAM (UNIT:lx)



C Range: 0 - 360DEG
C Interval: 15.0DEG
Test Speed: HIGH
Temperature: 25.3DEG
Operators: DAMIN
Test Date: 2021-11-29

□ Range: 0 - 180DEG
□ Interval: 1.0DEG
Test System: EVERFINE GO-2000A_V1 SYSTEM V2.00.444
Humidity: 65.0%
Test Distance: 4.880m [K=1.0000]
Remarks:

ZONAL FLUX DIAGRAM

ZONAL FLUX DIAGRAM:

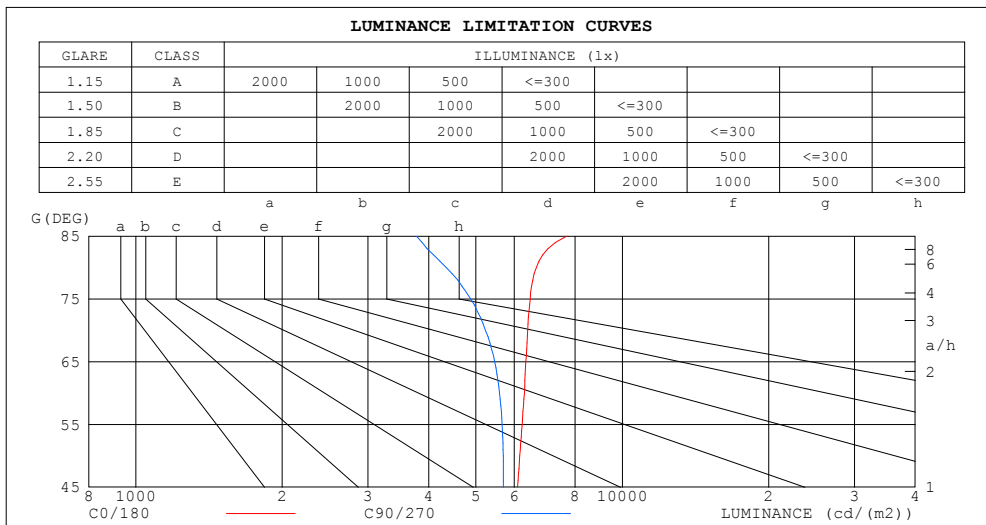
mm	C0	C45	C90	C135	C180	C225	C270	C315	mm	□ zone	□ total	%lum, lamp
10	67.77	66.55	65.67	65.49	66.20	65.16	65.49	66.38	0- 10	6.355	6.355	3.04,3.04
20	65.62	64.57	63.09	62.33	62.56	61.77	62.73	64.18	10- 20	18.36	24.71	11.8,11.8
30	61.47	60.76	58.65	57.25	56.96	56.52	58.11	60.13	20- 30	28.26	52.97	25.3,25.3
40	55.40	55.00	52.27	50.20	49.38	49.34	51.61	54.16	30- 40	34.83	87.80	42,42
50	47.49	47.23	43.91	41.12	39.85	40.18	43.13	45.28	40- 50	37.06	124.9	59.7,59.7
60	37.75	37.29	33.57	30.11	28.47	29.13	32.65	35.40	50- 60	34.37	159.2	76.2,76.2
70	26.23	25.46	21.49	17.66	15.84	16.75	20.25	23.44	60- 70	26.63	185.9	88.9,88.9
80	13.86	12.92	9.066	5.873	4.490	5.270	7.963	11.63	70- 80	15.24	201.1	96.2,96.2
90	3.366	2.769	0.7404	0.5198	0.3385	0.4275	0.2684	2.279	80- 90	4.760	205.9	98.5,98.5
100	0.3056	0.2545	0.2541	0.3379	0.2839	0.2691	0.2614	0.2796	90-100	0.6461	206.5	98.8,98.8
110	0.2736	0.2918	0.3164	0.3852	0.3672	0.3525	0.3459	0.3153	100-110	0.3392	206.8	99,99
120	0.3513	0.3740	0.4020	0.4292	0.4461	0.4313	0.4303	0.4009	110-120	0.3823	207.2	99.1,99.1
130	0.4302	0.4562	0.4786	0.5024	0.5249	0.5112	0.5103	0.4808	120-130	0.4096	207.6	99.3,99.3
140	0.5113	0.5396	0.5574	0.5812	0.5948	0.5833	0.5858	0.5642	130-140	0.4109	208.0	99.5,99.5
150	0.5923	0.6195	0.6295	0.6533	0.6590	0.6509	0.6545	0.6408	140-150	0.3805	208.4	99.7,99.7
160	0.6734	0.6893	0.6937	0.7198	0.7186	0.7039	0.7119	0.7084	150-160	0.3126	208.7	99.9,99.9
170	0.7433	0.7490	0.7478	0.7839	0.7704	0.7512	0.7614	0.7692	160-170	0.2088	208.9	100,100
180	0.7850	0.7828	0.7805	0.8042	0.7873	0.7816	0.7828	0.8042	170-180	0.0746	209.0	100,100
DEG	LUMINOUS INTENSITY:cd									UNIT:lm		

C Range: 0 - 360DEG
C Interval: 15.0DEG
Test Speed: HIGH
Temperature:25.3DEG
Operators:DAMIN
Test Date:2021-11-29

□ Range: 0 - 180DEG
□ Interval: 1.0DEG
Test System:EVERFINE GO-2000A_V1 SYSTEM V2.00.444
Humidity:65.0%
Test Distance:4.880m [K=1.0000]
Remarks:

LUMINANCE LIMITATION CURVES

NAME: LED Strip	TYPE: Indoor lighting	WEIGHT: 20g
SPEC.: 2835 084LED	DIM.: 500*12*1.2mm	SERIAL No.: 20211123004
MFR.: EVERFINE	SUR.: 500*12*1.2mm	Shielding Angle:



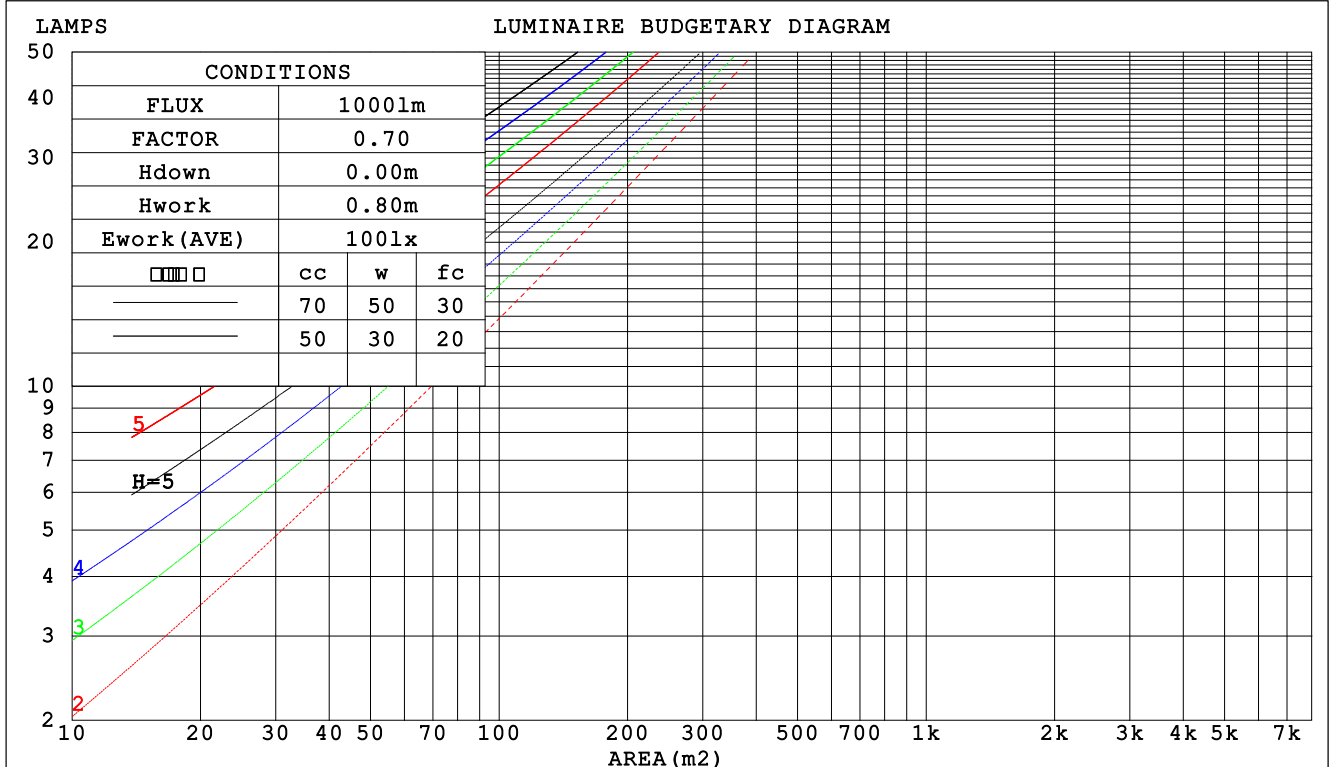
C Range: 0 - 360DEG
C Interval: 15.0DEG
Test Speed: HIGH
Temperature: 25.3DEG
Operators: DAMIN
Test Date: 2021-11-29

☐ Range: 0 - 180DEG
☐ Interval: 1.0DEG
Test System: EVERFINE GO-2000A_V1 SYSTEM V2.00.444
Humidity: 65.0%
Test Distance: 4.880m [K=1.0000]
Remarks:

CU AND LUMINAIRE BUDGETARY ESTIMATE DIAGRAM

NAME: LED Strip	TYPE: Indoor lighting	WEIGHT: 20g
SPEC.: 2835 084LED	DIM.: 500*12*1.2mm	SERIAL No.: 20211123004
MFR.: EVERFINE	SUR.: 500*12*1.2mm	Shielding Angle:

□cc	80%			70%			50%			30%			10%			0
□w	50%	30%	10%	50%	30%	10%	50%	30%	10%	50%	30%	10%	50%	30%	10%	0
□fc	20%			20%			20%			20%			20%			0
RCR	RCR:Room Cavity Ratio															



C Range: 0 - 360DEG
 C Interval: 15.0DEG
 Test Speed: HIGH
 Temperature:25.3DEG
 Operators:DAMIN
 Test Date:2021-11-29

□ Range: 0 - 180DEG
 □ Interval: 1.0DEG
 Test System:EVERFINE GO-2000A_V1 SYSTEM V2.00.444
 Humidity:65.0%
 Test Distance:4.880m [K=1.0000]
 Remarks:

WEC AND CCEC

NAME: LED Strip	TYPE: Indoor lighting	WEIGHT: 20g
SPEC.: 2835 084LED	DIM.: 500*12*1.2mm	SERIAL No.: 20211123004
MFR.: EVERFINE	SUR.: 500*12*1.2mm	Shielding Angle:

<input type="checkbox"/> cc	80%	70%	50%	30%	10%	0
<input type="checkbox"/> w	50% 30% 10%	50% 30% 10%	50% 30% 10%	50% 30% 10%	50% 30% 10%	0
<input type="checkbox"/> fc	20%	20%	20%	20%	20%	0
RCR	RCR:Room Cavity Ratio Wall Exitance Coefficients(WEC)					
0.0						
1.0	.318 .181 .057	.311 .177 .056	.297 .170 .054	.284 .164 .052	.272 .157 .051	
2.0	.298 .163 .050	.291 .160 .049	.279 .155 .048	.267 .150 .047	.256 .145 .046	
3.0	.275 .146 .044	.269 .144 .043	.258 .140 .042	.247 .136 .042	.238 .132 .041	
4.0	.253 .131 .039	.248 .130 .038	.238 .126 .038	.229 .123 .037	.220 .120 .036	
5.0	.233 .119 .034	.229 .117 .034	.220 .115 .034	.212 .112 .033	.204 .109 .033	
6.0	.216 .108 .031	.212 .107 .031	.204 .105 .030	.197 .102 .030	.190 .100 .030	
7.0	.201 .099 .028	.197 .098 .028	.190 .096 .028	.184 .094 .027	.177 .092 .027	
8.0	.188 .092 .026	.184 .091 .026	.178 .089 .025	.172 .087 .025	.166 .085 .025	
9.0	.176 .085 .024	.173 .084 .024	.167 .082 .023	.161 .081 .023	.156 .079 .023	
10.0	.165 .079 .022	.162 .078 .022	.157 .077 .022	.152 .076 .021	.147 .074 .021	

<input type="checkbox"/> cc	80%	70%	50%	30%	10%	0
<input type="checkbox"/> w	50% 30% 10%	50% 30% 10%	50% 30% 10%	50% 30% 10%	50% 30% 10%	0
<input type="checkbox"/> fc	20%	20%	20%	20%	20%	0
RCR	RCR:Room Cavity Ratio Ceiling Cavity Exitance Coefficients(CCEC)					
0.0	.202 .202 .202	.173 .173 .173	.118 .118 .118	.068 .068 .068	.022 .022 .022	
1.0	.193 .168 .145	.165 .144 .125	.113 .099 .087	.065 .057 .050	.021 .018 .016	
2.0	.185 .144 .109	.158 .124 .094	.108 .086 .066	.063 .050 .039	.020 .016 .013	
3.0	.177 .126 .085	.152 .109 .074	.104 .076 .052	.060 .044 .031	.019 .014 .010	
4.0	.170 .113 .070	.146 .098 .060	.100 .068 .043	.058 .040 .025	.019 .013 .008	
5.0	.162 .103 .059	.139 .089 .051	.096 .062 .036	.056 .036 .021	.018 .012 .007	
6.0	.155 .094 .051	.133 .082 .044	.092 .057 .031	.053 .034 .019	.017 .011 .006	
7.0	.148 .087 .045	.127 .076 .039	.088 .053 .028	.051 .031 .016	.017 .010 .005	
8.0	.142 .082 .040	.122 .071 .035	.084 .050 .025	.049 .029 .015	.016 .010 .005	
9.0	.136 .077 .037	.117 .067 .032	.081 .047 .023	.047 .028 .014	.015 .009 .005	
10.0	.130 .072 .034	.112 .063 .030	.078 .044 .021	.045 .026 .013	.015 .009 .004	

C Range: 0 - 360DEG
C Interval: 15.0DEG
Test Speed: HIGH
Temperature:25.3DEG
Operators:DAMIN
Test Date:2021-11-29

☐ Range: 0 - 180DEG
☐ Interval: 1.0DEG
Test System:EVERFINE GO-2000A_V1 SYSTEM V2.00.444
Humidity:65.0%
Test Distance:4.880m [K=1.0000]
Remarks:

UGR(Unified Glare Rating) Table

NAME: LED Strip					TYPE: Indoor lighting			WEIGHT: 20g		
SPEC.: 2835 084LED					DIM.: 500*12*1.2mm			SERIAL No.: 20211123004		
MFR.: EVERFINE					SUR.: 500*12*1.2mm			Shielding Angle:		
ceiling/cavity	0.7	0.7	0.5	0.5	0.3	0.7	0.7	0.5	0.5	0.3
walls	0.5	0.3	0.5	0.3	0.3	0.5	0.3	0.5	0.3	0.3
working plane	0.2	0.2	0.2	0.2	0.2	0.2	0.2	0.2	0.2	0.2
Room dimensions	Viewed crosswise					Viewed endwise				
x = 2H y = 2H	25.1	26.6	25.4	26.9	27.1	24.7	26.2	25.0	26.5	26.7
3H	27.0	28.4	27.3	28.7	28.9	26.4	27.8	26.7	28.0	28.3
4H	27.8	29.2	28.2	29.4	29.7	27.0	28.4	27.4	28.6	28.9
6H	28.5	29.8	28.9	30.1	30.4	27.5	28.7	27.8	29.0	29.4
8H	28.8	30.0	29.2	30.4	30.7	27.6	28.8	28.0	29.2	29.5
12H	29.1	30.3	29.5	30.6	30.9	27.7	28.9	28.1	29.2	29.5
4H 2H	25.8	27.1	26.1	27.4	27.7	25.5	26.8	25.8	27.1	27.4
3H	27.9	29.0	28.2	29.4	29.7	27.4	28.5	27.7	28.8	29.2
4H	28.8	29.9	29.2	30.3	30.6	28.1	29.2	28.5	29.6	29.9
6H	29.7	30.7	30.1	31.0	31.4	28.8	29.7	29.2	30.1	30.5
8H	30.1	31.0	30.5	31.4	31.8	29.0	29.8	29.4	30.2	30.7
12H	30.4	31.2	30.9	31.6	32.1	29.1	29.9	29.5	30.3	30.8
8H 4H	29.2	30.1	29.6	30.5	30.9	28.6	29.5	29.0	29.9	30.3
6H	30.2	31.0	30.7	31.4	31.9	29.4	30.1	29.8	30.5	31.0
8H	30.7	31.4	31.2	31.8	32.3	29.7	30.3	30.2	30.8	31.3
12H	31.2	31.8	31.7	32.3	32.8	29.9	30.5	30.4	31.0	31.5
12H 4H	29.2	30.0	29.6	30.4	30.9	28.6	29.4	29.1	29.9	30.3
6H	30.3	31.0	30.8	31.4	31.9	29.5	30.2	30.0	30.6	31.1
8H	30.9	31.4	31.4	31.9	32.4	29.9	30.5	30.4	30.9	31.4
Variations with the observer position at spacings(CIE Pub.117):										
S = 1.0H	+ 0.1 / - 0.2					+ 0.1 / - 0.2				
1.5H	+ 0.2 / - 0.3					+ 0.2 / - 0.4				
2.0H	+ 0.1 / - 0.4					+ 0.2 / - 0.5				

CIE Pub.117, 209.0 lm Total Lamp Luminous Flux Correct (8log(F/F0) = -5.4)
Area: 0.012 m2

C Range: 0 - 360DEG
C Interval: 15.0DEG
Test Speed: HIGH
Temperature:25.3DEG
Operators:DAMIN
Test Date:2021-11-29

☐ Range: 0 - 180DEG
☐ Interval: 1.0DEG
Test System:EVERFINE GO-2000A_V1 SYSTEM V2.00.444
Humidity:65.0%
Test Distance:4.880m [K=1.0000]
Remarks:

UTILIZATION FACTORS TABLE

NAME: LED Strip	TYPE: Indoor lighting	WEIGHT: 20g
SPEC.: 2835 084LED	DIM.: 500*12*1.2mm	SERIAL No.: 20211123004
MFR.: EVERFINE	SUR.: 500*12*1.2mm	Shielding Angle:

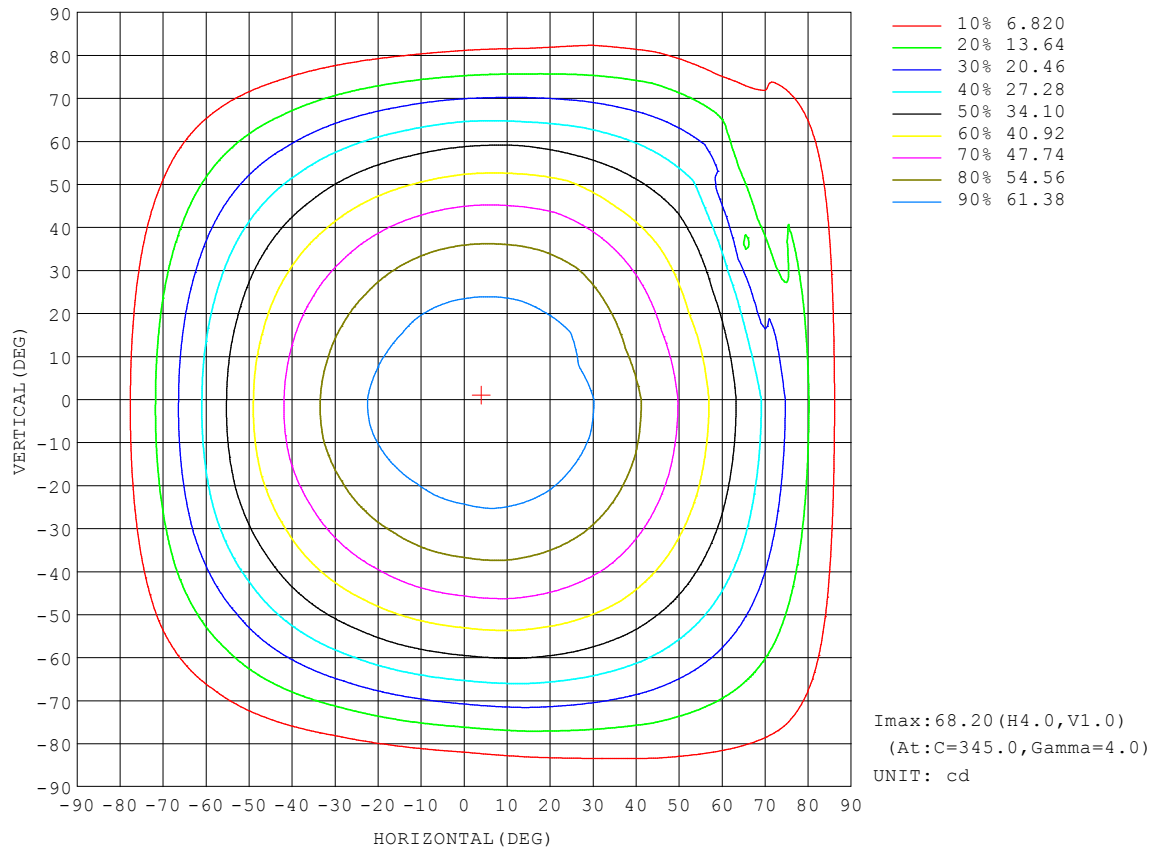
REFLECTANCE										
Ceiling	0.8	0.8	0.8	0.7	0.7	0.7	0.5	0.5	0.5	0
Walls	0.7	0.5	0.3	0.7	0.5	0.3	0.7	0.5	0.3	0
Working plane	0.2	0.2	0.2	0.2	0.2	0.2	0.2	0.2	0.2	0
ROOM INDEX	UTILIZATION FACTORS (PERCENT) k(RI) x RCR = 5									
k = 0.60	56	44	37	55	44	37	54	43	37	30
0.80	66	54	47	65	54	46	63	53	46	39
1.00	74	63	56	73	62	55	71	64	55	47
1.25	82	71	63	80	70	63	77	68	62	54
1.50	87	77	69	85	76	69	82	74	68	60
2.00	94	85	78	92	84	77	88	81	76	67
2.50	98	90	83	96	88	82	91	85	80	72
3.00	101	94	88	99	92	87	95	89	85	76
4.00	105	99	95	103	98	93	98	94	90	81
5.00	108	103	99	105	101	97	100	97	94	84
ROOM INDEX	UF (total)									Direct
According to DIN EN 13032-2 2004										
Suspended										
SHRNOM = 1.25										

C Range: 0 - 360DEG
 C Interval: 15.0DEG
 Test Speed: HIGH
 Temperature: 25.3DEG
 Operators: DAMIN
 Test Date: 2021-11-29

☐ Range: 0 - 180DEG
☐ Interval: 1.0DEG
 Test System: EVERFINE GO-2000A_V1 SYSTEM V2.00.444
 Humidity: 65.0%
 Test Distance: 4.880m [K=1.0000]
 Remarks:

ISOCANDELA DIAGRAM

NAME: LED Strip	TYPE: Indoor lighting	WEIGHT: 20g
SPEC.: 2835 084LED	DIM.: 500*12*1.2mm	SERIAL No.: 20211123004
MFR.: EVERFINE	SUR.: 500*12*1.2mm	Shielding Angle:

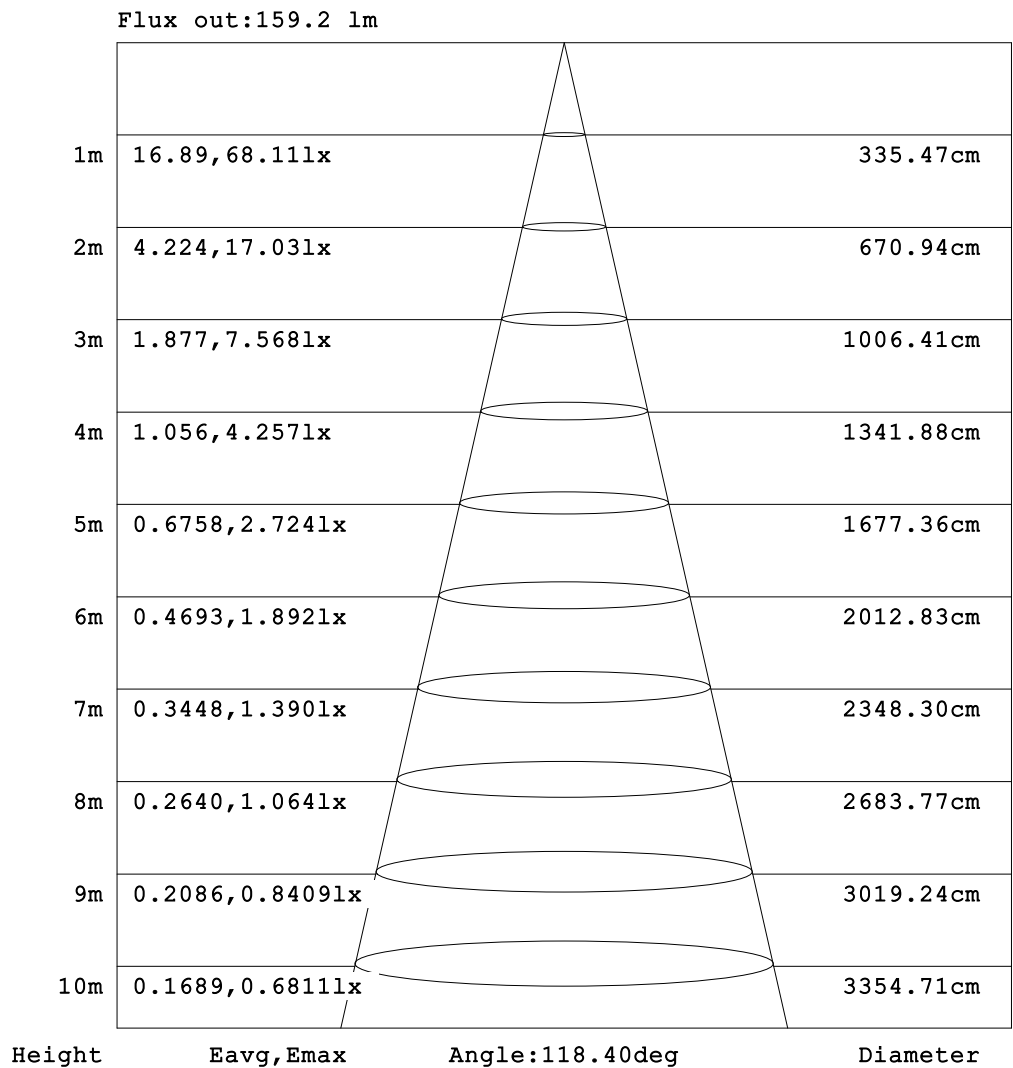


C Range: 0 - 360DEG
 C Interval: 15.0DEG
 Test Speed: HIGH
 Temperature: 25.3DEG
 Operators: DAMIN
 Test Date: 2021-11-29

☐ Range: 0 - 180DEG
☐ Interval: 1.0DEG
 Test System: EVERFINE GO-2000A_V1 SYSTEM V2.00.444
 Humidity: 65.0%
 Test Distance: 4.880m [K=1.0000]
 Remarks:

AAI Figure

NAME: LED Strip	TYPE: Indoor lighting	WEIGHT: 20g
SPEC.: 2835 084LED	DIM.: 500*12*1.2mm	SERIAL No.: 20211123004
MFR.: EVERFINE	SUR.: 500*12*1.2mm	Shielding Angle:



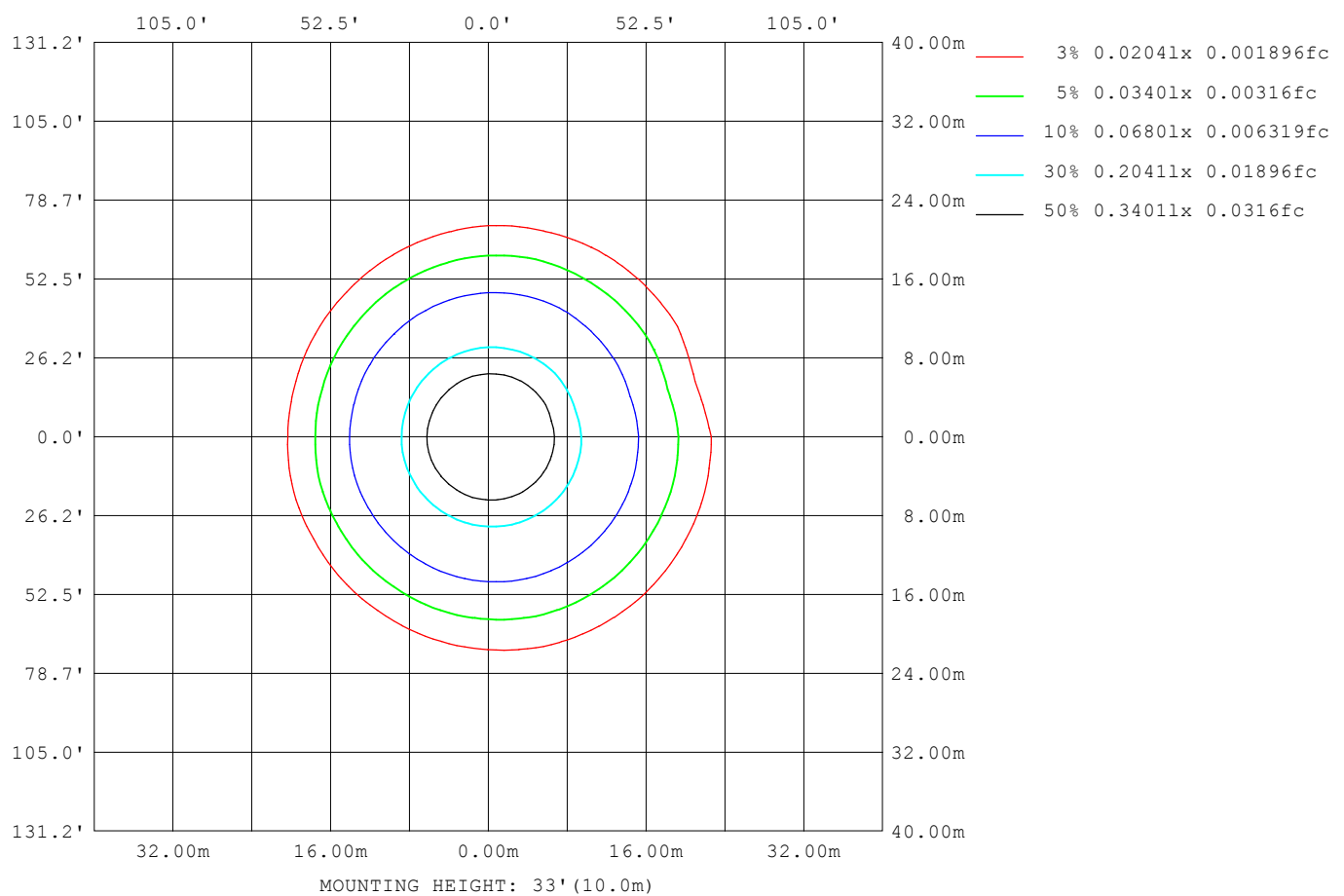
Note: The Curves indicate the illuminated area and the average illumination when the luminaire is at different distance.

C Range: 0 - 360DEG
 C Interval: 15.0DEG
 Test Speed: HIGH
 Temperature: 25.3DEG
 Operators: DAMIN
 Test Date: 2021-11-29

☐ Range: 0 - 180DEG
☐ Interval: 1.0DEG
 Test System: EVERFINE GO-2000A_V1 SYSTEM V2.00.444
 Humidity: 65.0%
 Test Distance: 4.880m [K=1.0000]
 Remarks:

ISOLUX DIAGRAM

NAME: LED Strip	TYPE: Indoor lighting	WEIGHT: 20g
SPEC.: 2835 084LED	DIM.: 500*12*1.2mm	SERIAL No.: 20211123004
MFR.: EVERFINE	SUR.: 500*12*1.2mm	Shielding Angle:



C Range: 0 - 360DEG
 C Interval: 15.0DEG
 Test Speed: HIGH
 Temperature: 25.3DEG
 Operators: DAMIN
 Test Date: 2021-11-29

☐ Range: 0 - 180DEG
☐ Interval: 1.0DEG
 Test System: EVERFINE GO-2000A_V1 SYSTEM V2.00.444
 Humidity: 65.0%
 Test Distance: 4.880m [K=1.0000]
 Remarks:

LED Avg.L Report

NAME: LED Strip	TYPE: Indoor lighting	WEIGHT: 20g
SPEC.: 2835 084LED	DIM.: 500*12*1.2mm	SERIAL No.: 20211123004
MFR.: EVERFINE	SUR.: 500*12*1.2mm	Shielding Angle:

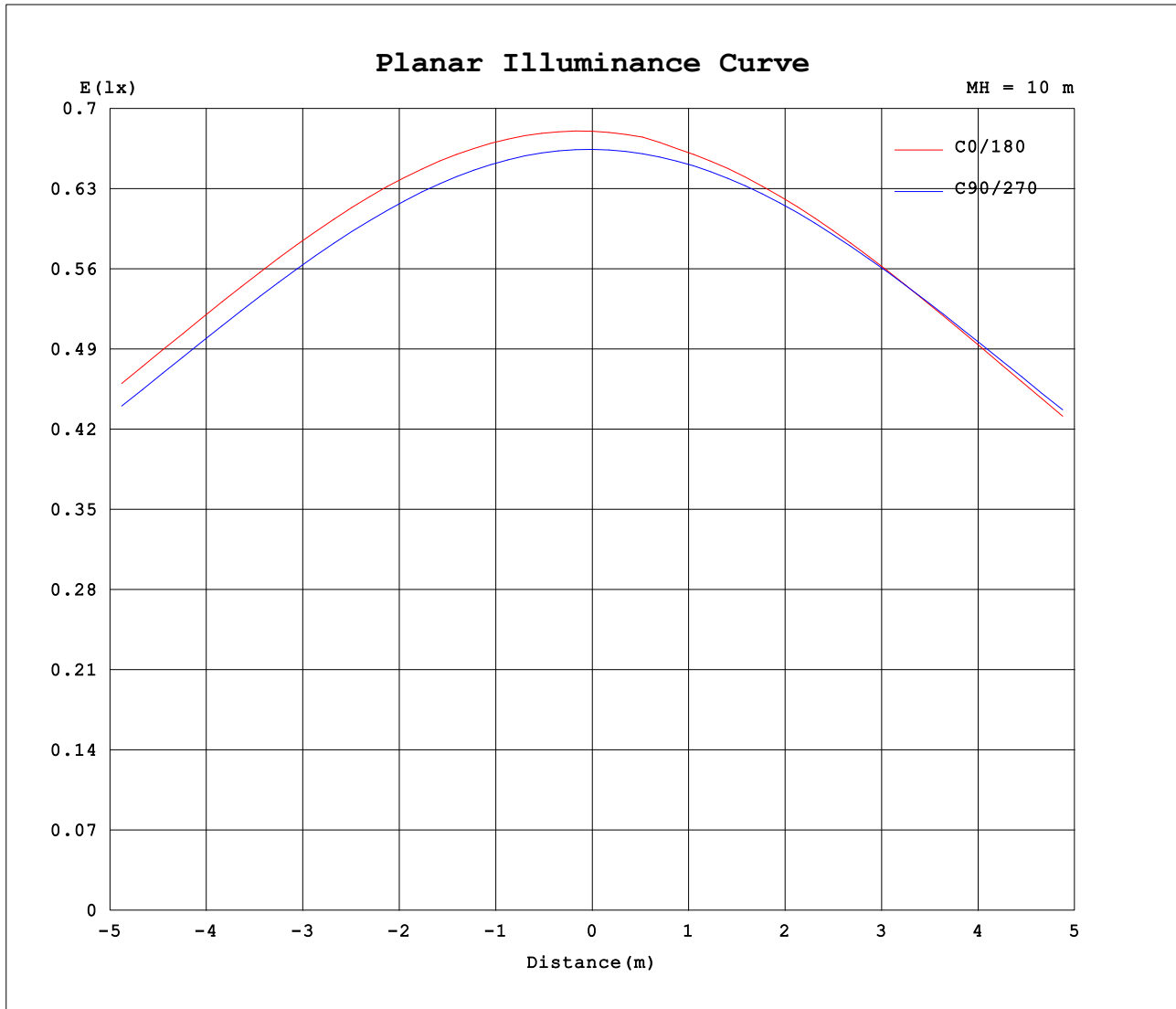
AvgL	cd/m2
L_0~180 (65) av	5360
L_0~180 (75) av	4794
L_0~180 (85) av	4444
L_90~270 (65) av	5370
L_90~270 (75) av	4679
L_90~270 (85) av	3396
L_45 (65) av	5336
L_45 (75) av	4717
L_45 (85) av	3626

Standard: GB/T 29293-2012

C Range: 0 - 360DEG
C Interval: 15.0DEG
Test Speed: HIGH
Temperature: 25.3DEG
Operators: DAMIN
Test Date: 2021-11-29

☐ Range: 0 - 180DEG
☐ Interval: 1.0DEG
Test System: EVERFINE GO-2000A_V1 SYSTEM V2.00.444
Humidity: 65.0%
Test Distance: 4.880m [K=1.0000]
Remarks:

Planar Illuminance Curve



C Range: 0 - 360DEG
 C Interval: 15.0DEG
 Test Speed: HIGH
 Temperature: 25.3DEG
 Operators: DAMIN
 Test Date: 2021-11-29

☐ Range: 0 - 180DEG
☐ Interval: 1.0DEG
 Test System: EVERFINE GO-2000A_V1 SYSTEM V2.00.444
 Humidity: 65.0%
 Test Distance: 4.880m [K=1.0000]
 Remarks:

LUMINOUS DISTRIBUTION INTENSITY DATA

NAME: LED Strip	TYPE: Indoor lighting	WEIGHT: 20g
SPEC.: 2835 084LED	DIM.: 500*12*1.2mm	SERIAL No.: 20211123004
MFR.: EVERFINE	SUR.: 500*12*1.2mm	Shielding Angle:

Table--1

UNIT: cd

C (DEG) □ (DEG)	0	15	30	45	60	75	90	105	120	135	150	165	180	195	210	225	240	255	270
0	68.0	67.6	66.9	66.7	66.7	66.6	66.4	66.5	66.6	66.8	67.4	68.1	68.0	67.6	66.9	66.7	66.7	66.6	66.4
5	68.1	67.8	67.1	66.8	66.8	66.6	66.3	66.2	66.2	66.4	66.9	67.3	67.3	66.9	66.3	66.2	66.3	66.2	66.2
10	67.8	67.5	66.8	66.6	66.3	66.1	65.7	65.5	65.4	65.5	65.9	66.2	66.2	65.8	65.3	65.2	65.4	65.4	65.5
15	66.9	66.7	66.1	65.8	65.5	65.1	64.6	64.4	64.1	64.1	64.4	64.7	64.6	64.2	63.8	63.7	64.0	64.2	64.3
20	65.6	65.5	64.9	64.6	64.2	63.7	63.1	62.7	62.4	62.3	62.5	62.6	62.6	62.1	61.8	61.8	62.2	62.4	62.7
25	63.8	63.8	63.2	62.9	62.4	61.9	61.1	60.6	60.2	60.0	60.0	60.1	60.0	59.5	59.3	59.4	59.8	60.2	60.7
30	61.5	61.5	61.1	60.8	60.2	59.5	58.7	58.1	57.5	57.3	57.1	57.2	57.0	56.5	56.4	56.5	57.0	57.6	58.1
35	58.7	58.8	58.5	58.1	57.5	56.7	55.7	55.1	54.3	54.0	53.7	53.7	53.4	53.1	53.0	53.2	53.8	54.4	55.1
40	55.4	55.6	55.4	55.0	54.3	53.4	52.3	51.5	50.6	50.2	49.8	49.8	49.4	49.1	49.1	49.3	50.0	50.8	51.6
45	51.7	51.9	51.7	51.4	50.6	49.7	48.3	47.5	46.5	45.9	45.4	45.4	44.8	44.6	44.7	45.0	45.8	46.6	47.6
50	47.5	47.7	47.5	47.2	46.4	45.3	43.9	42.9	41.8	41.1	40.5	40.5	39.9	39.7	39.8	40.2	41.0	42.0	43.1
55	42.9	43.0	42.9	42.5	41.7	40.6	39.0	37.8	36.6	35.8	35.1	35.1	34.4	34.1	34.4	34.9	35.8	36.8	38.1
60	37.8	37.9	37.7	37.3	36.4	35.3	33.6	32.3	31.0	30.1	29.3	29.2	28.5	28.3	28.7	29.1	30.2	31.2	32.6
65	32.1	32.3	32.0	31.6	30.7	29.5	27.7	26.3	24.9	24.0	23.1	23.0	22.2	22.1	22.5	23.0	24.1	25.2	26.7
70	26.2	26.4	26.0	25.5	24.5	23.3	21.5	20.0	18.6	17.7	16.8	16.6	15.8	15.7	16.2	16.7	17.8	19.0	20.3
75	20.1	20.2	19.8	19.2	18.1	16.9	15.2	13.8	12.3	11.5	10.6	10.5	9.70	9.68	10.1	10.7	11.7	12.8	13.9
80	13.9	14.0	13.5	12.9	11.8	10.7	9.07	7.85	6.61	5.87	5.20	5.17	4.49	4.47	4.85	5.27	6.10	6.96	7.96
85	8.03	8.17	7.68	7.16	6.13	5.17	3.95	3.16	2.32	1.95	1.71	1.84	1.27	1.28	1.49	1.67	2.06	2.53	3.15
90	3.37	3.47	3.13	2.77	2.08	1.50	0.74	0.65	0.54	0.52	0.58	0.80	0.34	0.37	0.41	0.43	0.46	0.50	0.27
95	0.87	0.89	0.78	0.67	0.47	0.28	0.25	0.27	0.30	0.34	0.46	0.69	0.27	0.27	0.26	0.26	0.26	0.25	0.24
100	0.31	0.30	0.29	0.25	0.26	0.25	0.25	0.26	0.29	0.34	0.43	0.71	0.28	0.28	0.28	0.27	0.28	0.26	0.26
105	0.26	0.26	0.26	0.26	0.26	0.27	0.27	0.29	0.30	0.36	0.44	0.66	0.32	0.31	0.32	0.31	0.32	0.30	0.30
110	0.27	0.28	0.28	0.29	0.29	0.31	0.32	0.33	0.33	0.39	0.46	0.64	0.37	0.35	0.37	0.35	0.36	0.34	0.35
115	0.31	0.32	0.32	0.33	0.33	0.36	0.36	0.37	0.37	0.40	0.46	0.61	0.41	0.40	0.41	0.39	0.40	0.38	0.39
120	0.35	0.36	0.36	0.37	0.37	0.40	0.40	0.41	0.41	0.43	0.47	0.59	0.45	0.44	0.45	0.43	0.44	0.42	0.43
125	0.39	0.40	0.40	0.41	0.42	0.44	0.44	0.45	0.45	0.46	0.47	0.55	0.49	0.47	0.49	0.47	0.48	0.47	0.47
130	0.43	0.44	0.44	0.46	0.46	0.48	0.48	0.49	0.49	0.50	0.50	0.53	0.52	0.51	0.52	0.51	0.52	0.51	0.51
135	0.48	0.49	0.48	0.50	0.50	0.52	0.52	0.53	0.53	0.54	0.54	0.54	0.56	0.55	0.56	0.55	0.56	0.55	0.55
140	0.51	0.53	0.52	0.54	0.54	0.56	0.56	0.57	0.56	0.58	0.57	0.57	0.59	0.58	0.59	0.58	0.59	0.58	0.59
145	0.55	0.57	0.56	0.58	0.58	0.60	0.59	0.61	0.60	0.62	0.61	0.62	0.63	0.62	0.63	0.62	0.63	0.62	0.62
150	0.59	0.61	0.60	0.62	0.62	0.63	0.63	0.65	0.64	0.65	0.65	0.65	0.66	0.65	0.66	0.65	0.66	0.65	0.65
155	0.63	0.65	0.64	0.66	0.65	0.67	0.66	0.68	0.67	0.69	0.68	0.69	0.69	0.68	0.69	0.67	0.69	0.68	0.68
160	0.67	0.69	0.68	0.69	0.68	0.70	0.69	0.71	0.71	0.72	0.71	0.74	0.72	0.70	0.71	0.70	0.71	0.71	0.71
165	0.71	0.72	0.71	0.72	0.71	0.73	0.72	0.74	0.73	0.75	0.74	0.78	0.75	0.73	0.74	0.73	0.74	0.73	0.74
170	0.74	0.75	0.74	0.75	0.74	0.76	0.75	0.76	0.76	0.78	0.77	0.81	0.77	0.75	0.76	0.75	0.76	0.75	0.76
175	0.77	0.78	0.76	0.77	0.76	0.78	0.77	0.79	0.78	0.80	0.81	0.85	0.79	0.77	0.78	0.77	0.78	0.77	0.78
180	0.79	0.79	0.78	0.78	0.78	0.78	0.78	0.79	0.80	0.80	0.82	0.91	0.79	0.78	0.78	0.78	0.78	0.78	0.78

C Range: 0 - 360DEG
C Interval: 15.0DEG
Test Speed: HIGH
Temperature:25.3DEG
Operators:DAMIN
Test Date:2021-11-29

□ Range: 0 - 180DEG
□ Interval: 1.0DEG
Test System:EVERFINE GO-2000A_V1 SYSTEM V2.00.444
Humidity:65.0%
Test Distance:4.880m [K=1.0000]
Remarks:

LUMINOUS DISTRIBUTION INTENSITY DATA

NAME: LED Strip	TYPE: Indoor lighting	WEIGHT: 20g
SPEC.: 2835 084LED	DIM.: 500*12*1.2mm	SERIAL No.: 20211123004
MFR.: EVERFINE	SUR.: 500*12*1.2mm	Shielding Angle:

Table--2

UNIT: cd

C (DEG) □ (DEG)	285	300	315	330	345														
0	66.5	66.6	66.8	67.4	68.1														
5	66.3	66.5	66.8	67.4	68.2														
10	65.7	66.0	66.4	67.0	67.9														
15	64.7	65.1	65.5	66.2	67.0														
20	63.2	63.7	64.2	64.9	65.4														
25	61.2	61.9	62.4	63.2	62.8														
30	58.8	59.5	60.1	60.9	60.1														
35	55.8	56.8	57.4	57.9	57.4														
40	52.4	53.5	54.2	53.8	53.7														
45	48.6	49.7	50.4	50.1	49.9														
50	44.2	45.4	45.3	46.0	45.8														
55	39.3	40.6	40.5	41.0	40.8														
60	33.9	34.6	35.4	36.3	35.5														
65	27.7	28.9	29.7	30.1	28.7														
70	21.4	22.5	23.4	24.3	13.4														
75	15.0	16.3	17.3	18.5	9.63														
80	9.00	10.3	11.6	9.16	12.0														
85	3.84	5.06	4.39	5.81	7.01														
90	1.11	1.75	2.28	2.88	3.20														
95	0.27	0.41	0.55	0.75	0.89														
100	0.25	0.25	0.28	0.33	0.41														
105	0.28	0.29	0.28	0.31	0.38														
110	0.32	0.32	0.32	0.34	0.40														
115	0.36	0.37	0.36	0.39	0.45														
120	0.41	0.41	0.40	0.43	0.51														
125	0.45	0.45	0.44	0.47	0.54														
130	0.49	0.49	0.48	0.51	0.57														
135	0.53	0.53	0.53	0.55	0.61														
140	0.57	0.57	0.56	0.59	0.65														
145	0.60	0.61	0.60	0.63	0.69														
150	0.64	0.65	0.64	0.67	0.73														
155	0.67	0.68	0.68	0.71	0.77														
160	0.70	0.71	0.71	0.75	0.81														
165	0.73	0.74	0.74	0.78	0.84														
170	0.75	0.77	0.77	0.81	0.88														
175	0.77	0.79	0.79	0.83	0.90														
180	0.79	0.80	0.80	0.83	0.91														

C Range: 0 - 360DEG
C Interval: 15.0DEG
Test Speed: HIGH
Temperature:25.3DEG
Operators:DAMIN
Test Date:2021-11-29

□ Range: 0 - 180DEG
□ Interval: 1.0DEG
Test System:EVERFINE GO-2000A_V1 SYSTEM V2.00.444
Humidity:65.0%
Test Distance:4.880m [K=1.0000]
Remarks: