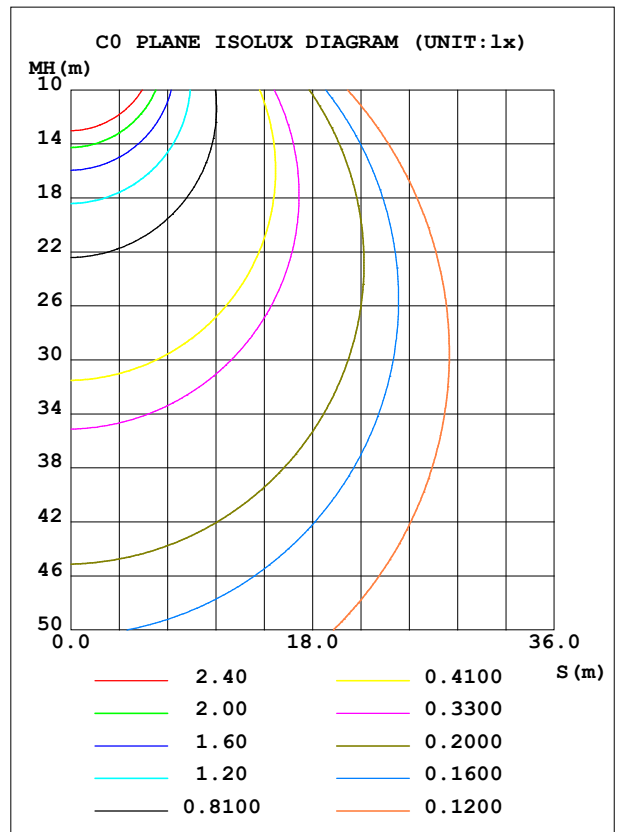
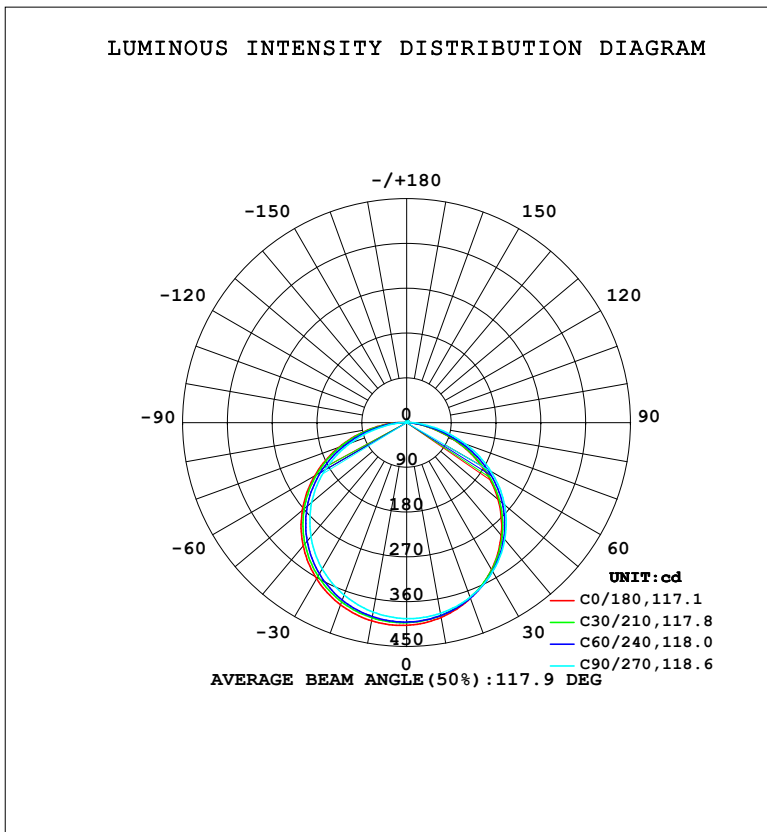


LUMINAIRE PHOTOMETRIC TEST REPORT

NAME: LED Strip	TYPE: Indoor lighting	WEIGHT: 20g
SPEC.: 2835 128LED	DIM.: 500*8*1.2MM	SERIAL No.: 20230808019
MFR.: EVERFINE	SUR.: 500*8MM	Shielding Angle:

DATA OF LAMP		PHOTOMETRIC DATA			
NOMINAL POWER(W)		Imax (cd)	407.7	S/MH (C0/180)	1.32
RATED VOLTAGE (V)		LOR (%)	100.0	S/MH (C90/270)	1.28
NOMINAL FLUX (lm)		TOTAL FLUX (lm)	1230.0	<input type="checkbox"/> UP, DN (C0-180)	0.9,49.1
LAMPS INSIDE		CIE CLASS	DIRECT	<input type="checkbox"/> UP, DN (C180-360)	0.8,49.2
TEST VOLTAGE (V)		<input type="checkbox"/> up (%)	1.7	CIBSE SHR NOM	1.25
		<input type="checkbox"/> down (%)	98.3	CIBSE SHR MAX	1.35



C Range: 0 - 360DEG
 C Interval: 15.0DEG
 Test Speed: HIGH
 Temperature: 25.3°C
 Operators: DAMIN
 Test Date: 2023-08-12

Range: 0 - 180DEG
 Interval: 1.0DEG
 Test System: EVERFINE GO-2000B_V1 SYSTEM V2.00.471
 Humidity: 65.0%
 Test Distance: 4.880m [K=1.0000]
 Remarks:

ZONAL FLUX DIAGRAM

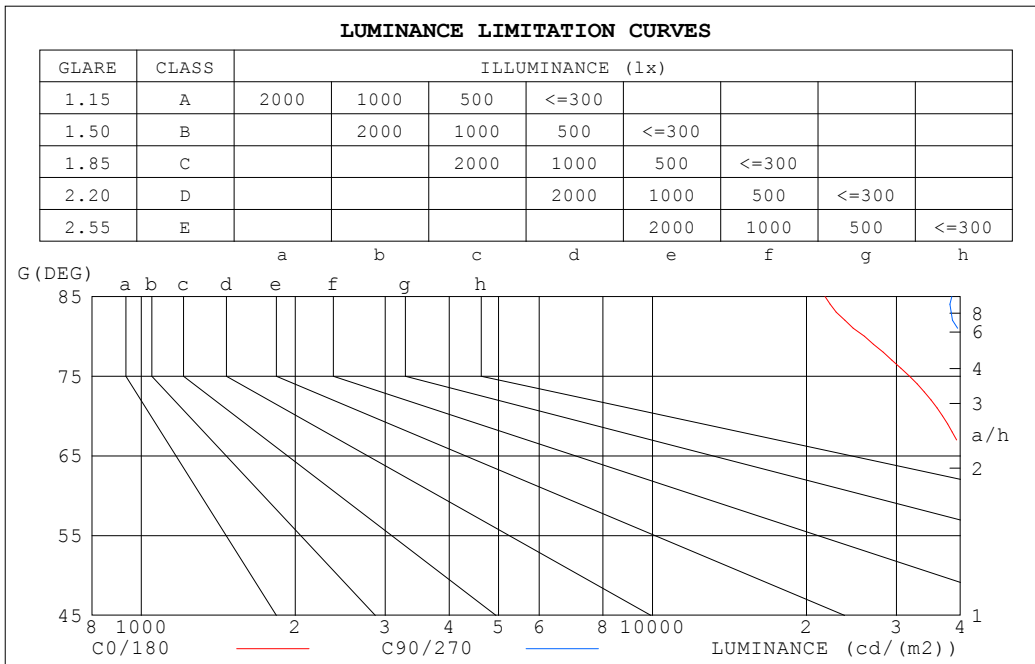
ZONAL FLUX DIAGRAM:

°	C0	C45	C90	C135	C180	C225	C270	C315	°	□ zone	□ total	%lum,lamp
10	397.6	393.3	389.3	390.3	404.4	396.7	386.6	387.0	0- 10	37.78	37.78	3.07,3.07
20	375.4	373.9	373.3	374.3	389.3	381.0	368.6	367.6	10- 20	108.8	146.6	11.9,11.9
30	341.3	342.9	345.8	347.3	362.3	353.6	339.6	337.6	20- 30	166.8	313.4	25.5,25.5
40	295.9	300.5	307.0	309.3	323.6	315.1	299.3	293.1	30- 40	204.4	517.7	42.1,42.1
50	239.7	246.7	256.9	260.4	273.8	265.7	249.3	239.1	40- 50	216.1	733.8	59.7,59.7
60	173.6	181.4	195.9	201.1	213.6	205.6	188.5	175.0	50- 60	199.3	933.2	75.9,75.9
70	101.0	108.0	125.8	134.1	144.8	137.2	119.7	104.5	60- 70	154.6	1088	88.4,88.4
80	36.07	37.36	56.17	65.57	73.40	66.16	49.43	41.99	70- 80	90.70	1178	95.8,95.8
90	4.142	3.477	8.940	17.28	19.13	12.11	1.990	8.187	80- 90	30.56	1209	98.3,98.3
100	1.608	1.534	1.660	5.829	1.936	1.422	1.538	1.975	90-100	5.168	1214	98.7,98.7
110	1.975	1.950	1.894	1.929	1.754	1.807	2.048	2.211	100-110	2.480	1217	98.9,98.9
120	2.467	2.455	2.408	2.216	2.253	2.319	2.582	2.718	110-120	2.300	1219	99.1,99.1
130	2.958	2.951	2.833	2.725	2.744	2.818	3.085	3.232	120-130	2.424	1221	99.3,99.3
140	3.423	3.437	3.306	3.239	3.227	3.300	3.557	3.746	130-140	2.492	1224	99.5,99.5
150	3.861	3.881	3.753	3.783	3.703	3.764	3.992	4.264	140-150	2.351	1226	99.7,99.7
160	4.280	4.264	4.150	4.323	4.168	4.178	4.370	4.730	150-160	1.949	1228	99.9,99.9
170	4.621	4.580	4.676	4.909	4.572	4.531	4.686	4.973	160-170	1.292	1230	100,100
180	4.807	4.757	4.854	5.111	4.804	4.755	4.856	5.111	170-180	0.4642	1230	100,100
DEG	LUMINOUS INTENSITY:cd									UNIT:lm		

C Range: 0 - 360DEG
 C Interval: 15.0DEG
 Test Speed: HIGH
 Temperature:25.3°C
 Operators:DAMIN
 Test Date:2023-08-12

□ Range: 0 - 180DEG
 □ Interval: 1.0DEG
 Test System:EVERFINE GO-2000B_V1 SYSTEM V2.00.471
 Humidity:65.0%
 Test Distance:4.880m [K=1.0000]
 Remarks:

LUMINANCE LIMITATION CURVES



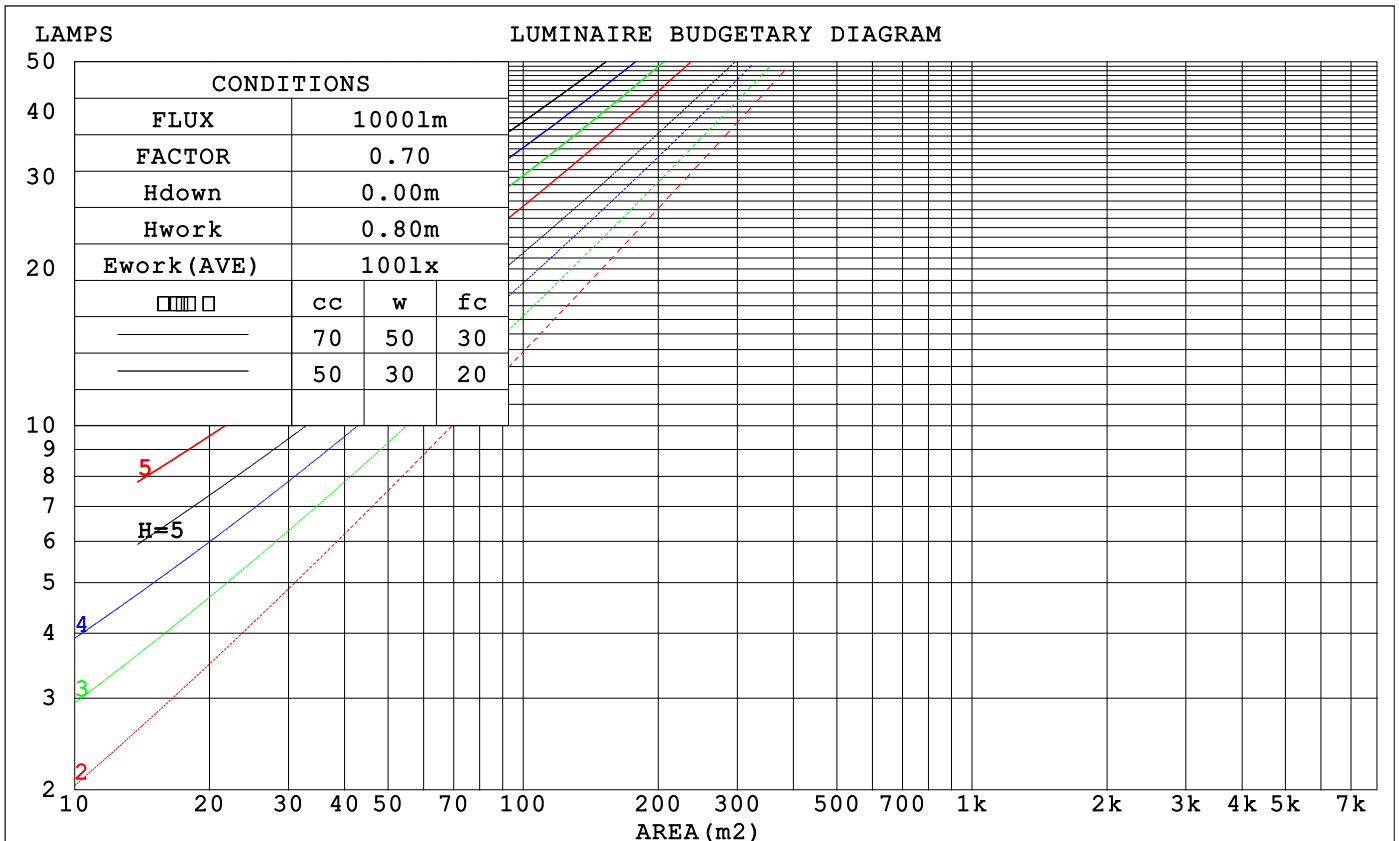
LUMINANCE cd/(m2)		
G (DEG)	C0/180	C90/270
85	21753	38483
80	25965	40436
75	31821	43417
70	36918	45961
65	40746	47885
60	43407	48978
55	45268	49621
50	46605	49954
45	47565	50074

C Range: 0 - 360DEG
 C Interval: 15.0DEG
 Test Speed: HIGH
 Temperature: 25.3°C
 Operators: DAMIN
 Test Date: 2023-08-12

Range: 0 - 180DEG
 Interval: 1.0DEG
 Test System: EVERFINE GO-2000B_V1 SYSTEM V2.00.471
 Humidity: 65.0%
 Test Distance: 4.880m [K=1.0000]
 Remarks:

CU AND LUMINAIRE BUDGETARY ESTIMATE DIAGRAM

□cc	80%			70%			50%			30%			10%			0
□w	50%	30%	10%	50%	30%	10%	50%	30%	10%	50%	30%	10%	50%	30%	10%	0
□fc	20%			20%			20%			20%			20%			0
RCR	RCR:Room Cavity Ratio			Coefficients of Utilization(CU)												
0.0	1.19	1.19	1.19	1.16	1.16	1.16	1.10	1.10	1.10	1.05	1.05	1.05	1.00	1.00	1.00	.98
1.0	1.03	.98	.94	1.00	.96	.93	.96	.93	.90	.92	.89	.86	.88	.86	.84	.81
2.0	.89	.82	.76	.87	.81	.75	.83	.78	.73	.80	.75	.71	.77	.73	.70	.67
3.0	.78	.70	.63	.76	.69	.62	.73	.67	.61	.70	.65	.60	.67	.63	.59	.56
4.0	.69	.60	.53	.68	.59	.53	.65	.58	.52	.62	.56	.51	.60	.55	.50	.48
5.0	.62	.52	.46	.60	.52	.45	.58	.50	.45	.56	.49	.44	.54	.48	.43	.41
6.0	.55	.46	.40	.54	.46	.39	.52	.45	.39	.50	.44	.38	.49	.43	.38	.36
7.0	.50	.41	.35	.49	.41	.35	.47	.40	.34	.46	.39	.34	.44	.38	.34	.32
8.0	.46	.37	.31	.45	.37	.31	.43	.36	.31	.42	.35	.30	.41	.35	.30	.28
9.0	.42	.33	.28	.41	.33	.28	.40	.33	.28	.39	.32	.27	.38	.31	.27	.25
10.0	.39	.31	.25	.38	.30	.25	.37	.30	.25	.36	.29	.25	.35	.29	.25	.23



C Range: 0 - 360DEG
 C Interval: 15.0DEG
 Test Speed: HIGH
 Temperature:25.3°C
 Operators:DAMIN
 Test Date:2023-08-12

□ Range: 0 - 180DEG
 □ Interval: 1.0DEG
 Test System:EVERFINE GO-2000B_V1 SYSTEM V2.00.471
 Humidity:65.0%
 Test Distance:4.880m [K=1.0000]
 Remarks:

WEC AND CCEC

□cc	80%			70%			50%			30%			10%			0
□w	50%	30%	10%	50%	30%	10%	50%	30%	10%	50%	30%	10%	50%	30%	10%	0
□fc	20%			20%			20%			20%			20%			0
RCR	RCR:Room Cavity Ratio						Wall Exitance Coefficients (WEC)									
0.0																
1.0	.320	.182	.058	.312	.178	.057	.298	.171	.055	.285	.164	.053	.273	.158	.051	
2.0	.298	.164	.050	.292	.161	.049	.279	.155	.048	.267	.150	.047	.257	.145	.046	
3.0	.275	.146	.044	.269	.144	.043	.258	.140	.042	.247	.135	.042	.238	.132	.041	
4.0	.253	.131	.039	.248	.130	.038	.238	.126	.038	.228	.123	.037	.220	.119	.036	
5.0	.233	.119	.034	.229	.117	.034	.220	.114	.034	.211	.112	.033	.204	.109	.033	
6.0	.216	.108	.031	.212	.107	.031	.204	.104	.030	.196	.102	.030	.189	.100	.030	
7.0	.201	.099	.028	.197	.098	.028	.190	.096	.028	.183	.094	.027	.177	.092	.027	
8.0	.187	.092	.026	.184	.091	.026	.177	.089	.025	.171	.087	.025	.166	.085	.025	
9.0	.175	.085	.024	.172	.084	.024	.167	.082	.023	.161	.081	.023	.156	.079	.023	
10.0	.165	.079	.022	.162	.078	.022	.157	.077	.022	.152	.075	.021	.147	.074	.021	

□cc	80%			70%			50%			30%			10%			0
□w	50%	30%	10%	50%	30%	10%	50%	30%	10%	50%	30%	10%	50%	30%	10%	0
□fc	20%			20%			20%			20%			20%			0
RCR	RCR:Room Cavity Ratio						Ceiling Cavity Exitance Coefficients (CCEC)									
0.0	.203	.203	.203	.174	.174	.174	.119	.119	.119	.068	.068	.068	.022	.022	.022	
1.0	.194	.169	.147	.166	.145	.126	.114	.100	.087	.065	.058	.051	.021	.019	.016	
2.0	.186	.145	.110	.160	.125	.095	.109	.086	.067	.063	.050	.039	.020	.016	.013	
3.0	.179	.128	.087	.153	.110	.075	.105	.076	.053	.061	.045	.031	.020	.014	.010	
4.0	.171	.114	.071	.147	.099	.062	.101	.069	.043	.058	.040	.026	.019	.013	.008	
5.0	.164	.104	.060	.141	.090	.052	.097	.063	.037	.056	.037	.022	.018	.012	.007	
6.0	.156	.096	.052	.134	.083	.045	.093	.058	.032	.054	.034	.019	.017	.011	.006	
7.0	.150	.089	.046	.129	.077	.040	.089	.054	.029	.052	.032	.017	.017	.010	.006	
8.0	.143	.083	.042	.123	.072	.037	.085	.051	.026	.050	.030	.015	.016	.010	.005	
9.0	.137	.078	.038	.118	.068	.034	.082	.048	.024	.048	.028	.014	.015	.009	.005	
10.0	.131	.074	.036	.113	.064	.031	.078	.045	.022	.046	.027	.013	.015	.009	.004	

C Range: 0 - 360DEG
 C Interval: 15.0DEG
 Test Speed: HIGH
 Temperature:25.3°C
 Operators:DAMIN
 Test Date:2023-08-12

□ Range: 0 - 180DEG
 □ Interval: 1.0DEG
 Test System:EVERFINE GO-2000B_V1 SYSTEM V2.00.471
 Humidity:65.0%
 Test Distance:4.880m [K=1.0000]
 Remarks:

UGR(Unified Glare Rating) Table

ceiling/cavity	0.7	0.7	0.5	0.5	0.3	0.7	0.7	0.5	0.5	0.3
walls	0.5	0.3	0.5	0.3	0.3	0.5	0.3	0.5	0.3	0.3
working plane	0.2	0.2	0.2	0.2	0.2	0.2	0.2	0.2	0.2	0.2
Room dimensions	Viewed crosswise					Viewed endwise				
x = 2H y = 2H	25.2	26.7	25.5	26.9	27.2	25.7	27.2	25.9	27.4	27.6
3H	26.5	27.9	26.8	28.2	28.5	27.3	28.7	27.6	28.9	29.2
4H	27.0	28.3	27.3	28.6	28.9	27.9	29.3	28.3	29.6	29.8
6H	27.2	28.5	27.6	28.8	29.1	28.4	29.7	28.8	30.0	30.3
8H	27.3	28.5	27.7	28.8	29.2	28.6	29.8	28.9	30.1	30.4
12H	27.3	28.5	27.7	28.8	29.2	28.7	29.9	29.1	30.2	30.5
4H 2H	25.8	27.1	26.1	27.4	27.7	26.2	27.5	26.5	27.8	28.1
3H	27.3	28.5	27.7	28.8	29.1	27.9	29.1	28.3	29.4	29.8
4H	27.9	28.9	28.3	29.3	29.7	28.7	29.8	29.1	30.1	30.5
6H	28.2	29.2	28.6	29.6	30.0	29.3	30.3	29.7	30.6	31.0
8H	28.3	29.2	28.8	29.6	30.0	29.5	30.4	30.0	30.8	31.2
12H	28.4	29.2	28.8	29.6	30.1	29.7	30.5	30.1	30.9	31.4
8H 4H	28.1	29.0	28.5	29.4	29.8	28.9	29.7	29.3	30.1	30.6
6H	28.6	29.3	29.0	29.7	30.2	29.6	30.3	30.0	30.7	31.2
8H	28.7	29.4	29.2	29.8	30.3	29.9	30.5	30.3	31.0	31.5
12H	28.8	29.4	29.3	29.9	30.4	30.1	30.7	30.6	31.1	31.7
12H 4H	28.1	28.9	28.5	29.3	29.8	28.8	29.7	29.3	30.1	30.5
6H	28.6	29.3	29.1	29.7	30.2	29.6	30.2	30.1	30.7	31.2
8H	28.8	29.3	29.3	29.8	30.3	29.9	30.5	30.4	30.9	31.4
Variations with the observer position at spacings(CIE Pub.117):										
S = 1.0H	+ 0.2 / - 0.2					+ 0.2 / - 0.2				
1.5H	+ 0.2 / - 0.4					+ 0.2 / - 0.3				
2.0H	+ 0.2 / - 0.3					+ 0.2 / - 0.3				

CIE Pub.117, 1230 lm Total Lamp Luminous Flux Correct (8log(F/F0) = 0.7)
 Area: 0.008 m2

C Range: 0 - 360DEG
 C Interval: 15.0DEG
 Test Speed: HIGH
 Temperature:25.3°C
 Operators:DAMIN
 Test Date:2023-08-12

Range: 0 - 180DEG
 Interval: 1.0DEG
 Test System:EVERFINE GO-2000B_V1 SYSTEM V2.00.471
 Humidity:65.0%
 Test Distance:4.880m [K=1.0000]
 Remarks:

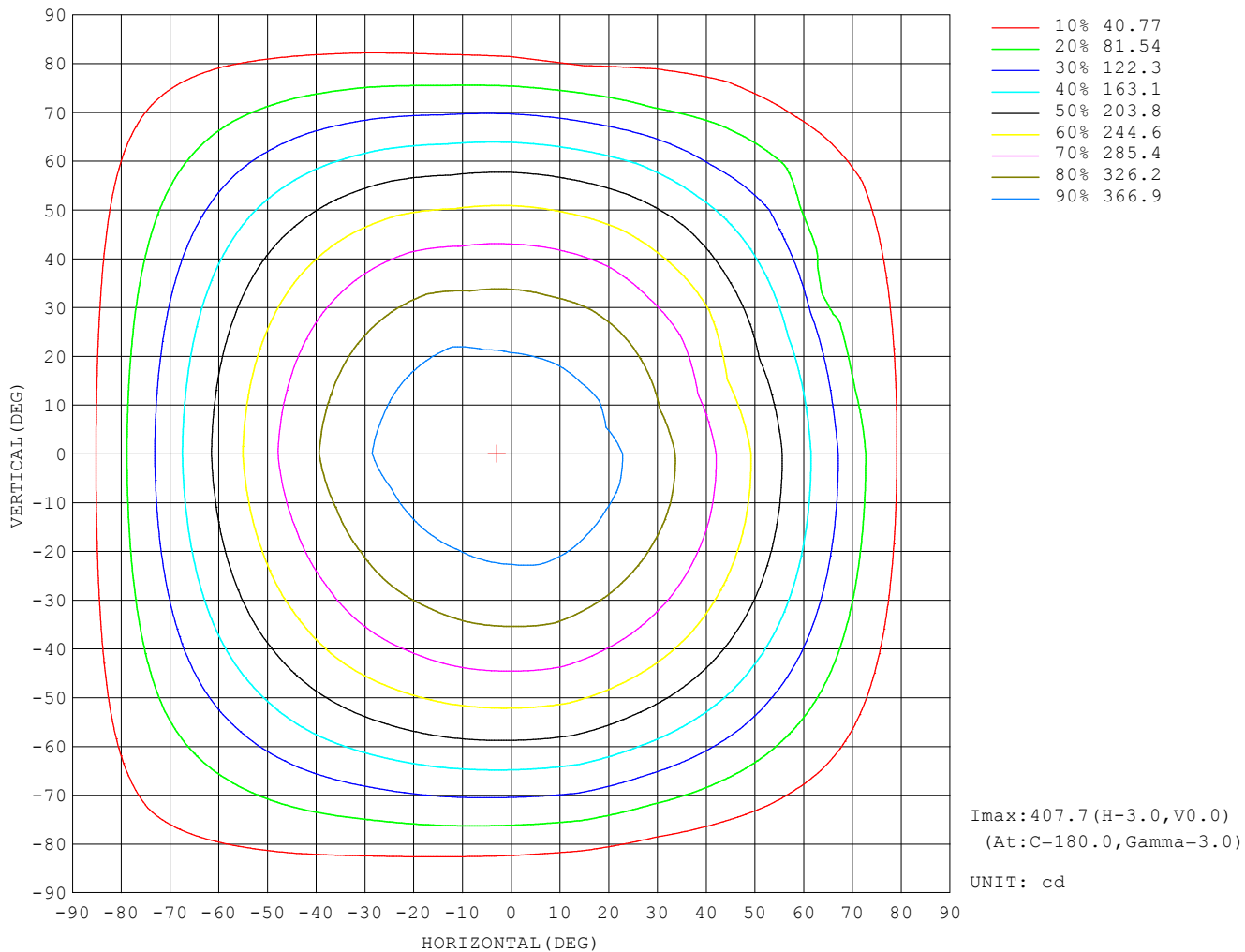
UTILIZATION FACTORS TABLE

REFLECTANCE										
Ceiling	0.8	0.8	0.8	0.7	0.7	0.7	0.5	0.5	0.5	0
Walls	0.7	0.5	0.3	0.7	0.5	0.3	0.7	0.5	0.3	0
Working plane	0.2	0.2	0.2	0.2	0.2	0.2	0.2	0.2	0.2	0
ROOM INDEX	UTILIZATION FACTORS (PERCENT) $k(RI) \times RCR = 5$									
$k = 0.60$	56	44	37	55	44	37	54	43	37	30
0.80	66	54	47	65	54	46	63	53	46	39
1.00	74	63	56	73	62	55	71	64	55	47
1.25	82	71	63	80	70	63	77	68	62	54
1.50	87	76	69	85	75	69	82	74	67	60
2.00	94	85	78	92	83	77	88	81	76	67
2.50	98	90	83	95	88	82	91	85	80	71
3.00	101	94	88	99	92	87	94	89	85	76
4.00	105	99	94	103	97	93	98	94	90	81
5.00	108	103	98	105	101	97	100	97	93	84
ROOM INDEX	UF (total)									Direct
According to DIN EN 13032-2 2004			Suspended				SHRNOM = 1.25			

C Range: 0 - 360DEG
 C Interval: 15.0DEG
 Test Speed: HIGH
 Temperature: 25.3°C
 Operators: DAMIN
 Test Date: 2023-08-12

Range: 0 - 180DEG
 Interval: 1.0DEG
 Test System: EVERFINE GO-2000B_V1 SYSTEM V2.00.471
 Humidity: 65.0%
 Test Distance: 4.880m [K=1.0000]
 Remarks:

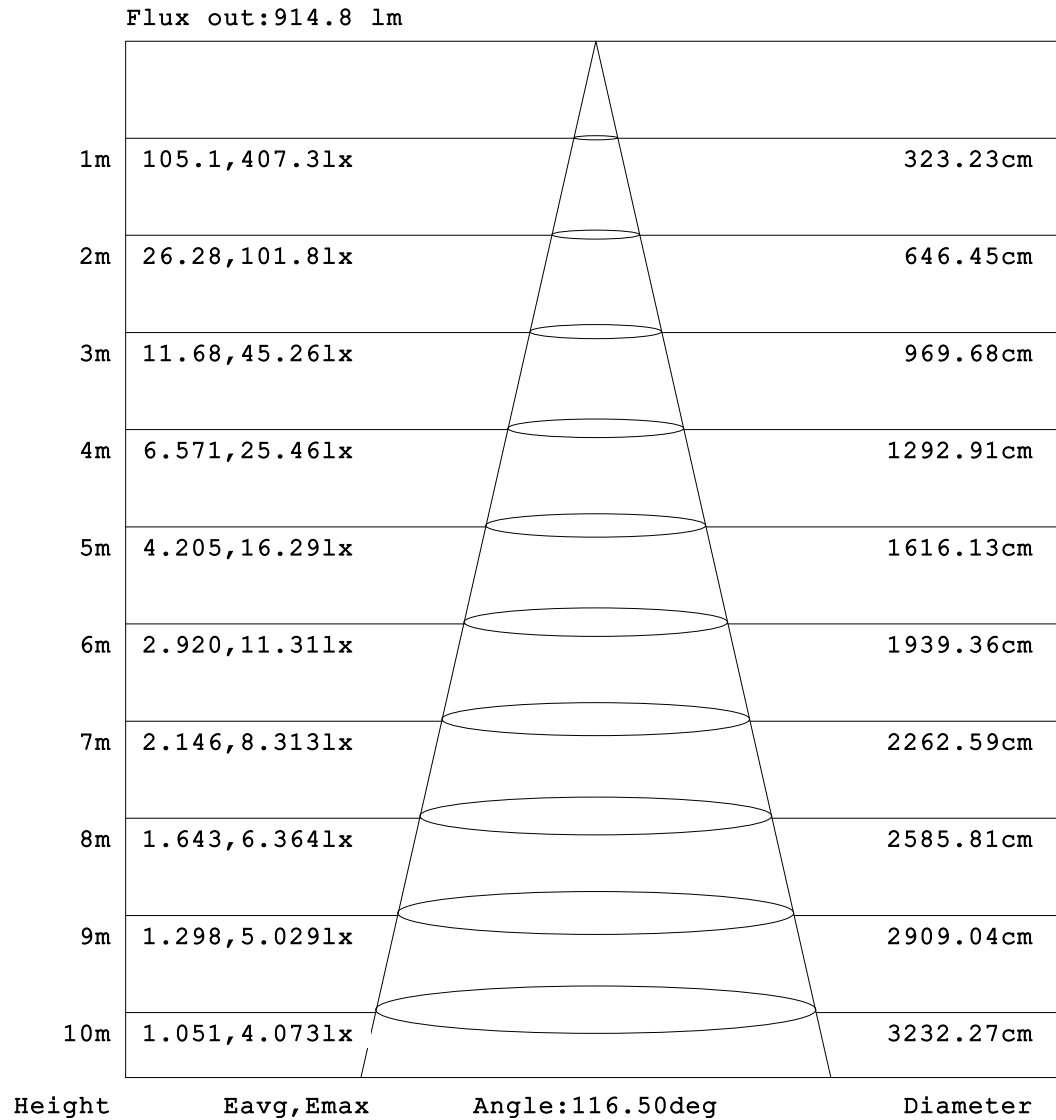
ISOCANDELA DIAGRAM



C Range: 0 - 360DEG
 C Interval: 15.0DEG
 Test Speed: HIGH
 Temperature: 25.3°C
 Operators: DAMIN
 Test Date: 2023-08-12

Range: 0 - 180DEG
 Interval: 1.0DEG
 Test System: EVERFINE GO-2000B_V1 SYSTEM V2.00.471
 Humidity: 65.0%
 Test Distance: 4.880m [K=1.0000]
 Remarks:

AAI Figure

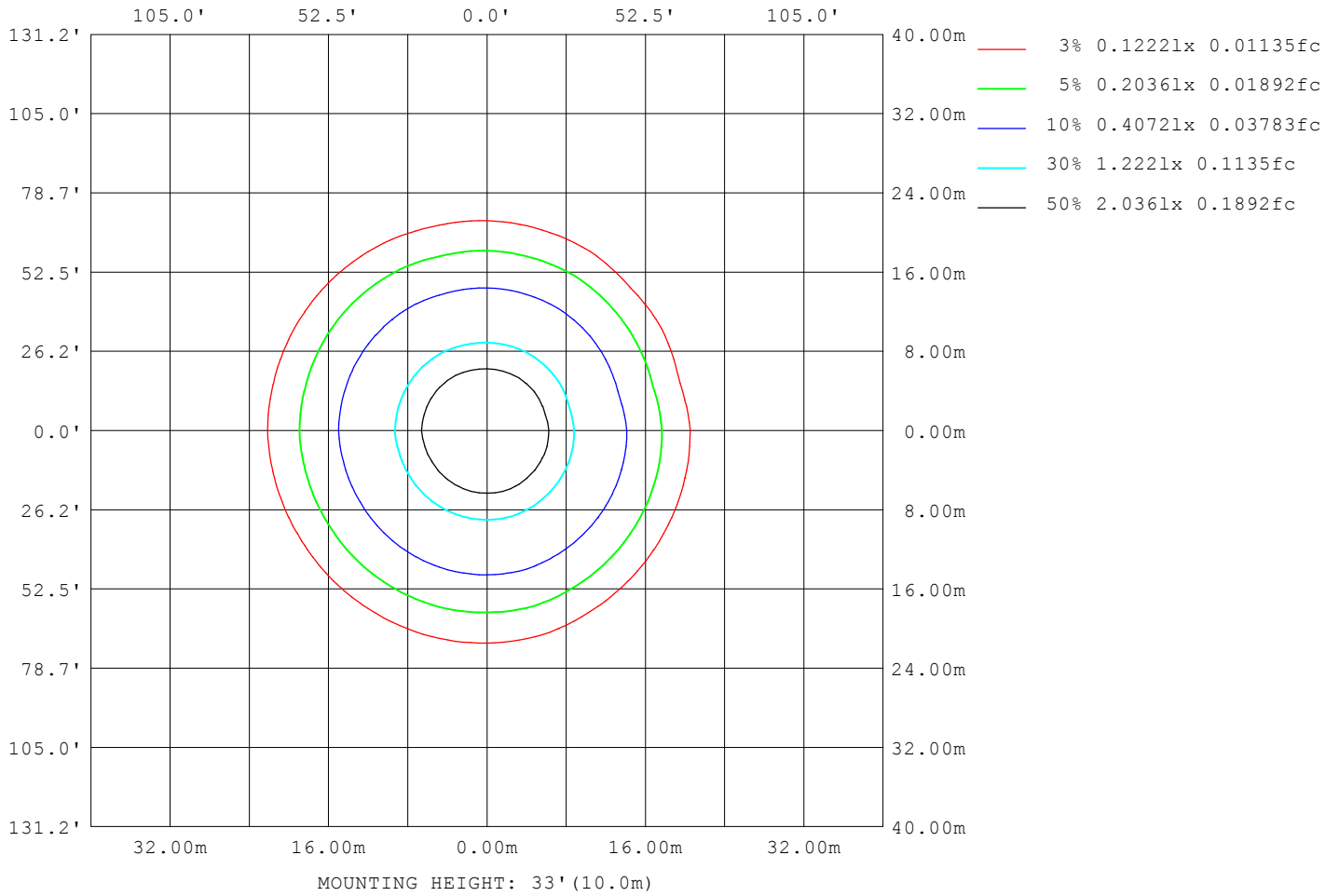


Note:The Curves indicate the illuminated area and the average illumination when the luminaire is at different distance.

C Range: 0 - 360DEG
 C Interval: 15.0DEG
 Test Speed: HIGH
 Temperature:25.3°C
 Operators:DAMIN
 Test Date:2023-08-12

Range: 0 - 180DEG
 Interval: 1.0DEG
 Test System:EVERFINE GO-2000B_V1 SYSTEM V2.00.471
 Humidity:65.0%
 Test Distance:4.880m [K=1.0000]
 Remarks:

ISOLUX DIAGRAM



C Range: 0 - 360DEG
 C Interval: 15.0DEG
 Test Speed: HIGH
 Temperature: 25.3°C
 Operators: DAMIN
 Test Date: 2023-08-12

Range: 0 - 180DEG
 Interval: 1.0DEG
 Test System: EVERFINE GO-2000B_V1 SYSTEM V2.00.471
 Humidity: 65.0%
 Test Distance: 4.880m [K=1.0000]
 Remarks:

LED Avg.L Report

NAME: LED Strip	TYPE: Indoor lighting	WEIGHT: 20g
SPEC.: 2835 128LED	DIM.: 500*8*1.2MM	SERIAL No.: 20230808019
MFR.: EVERFINE	SUR.: 500*8MM	Shielding Angle:

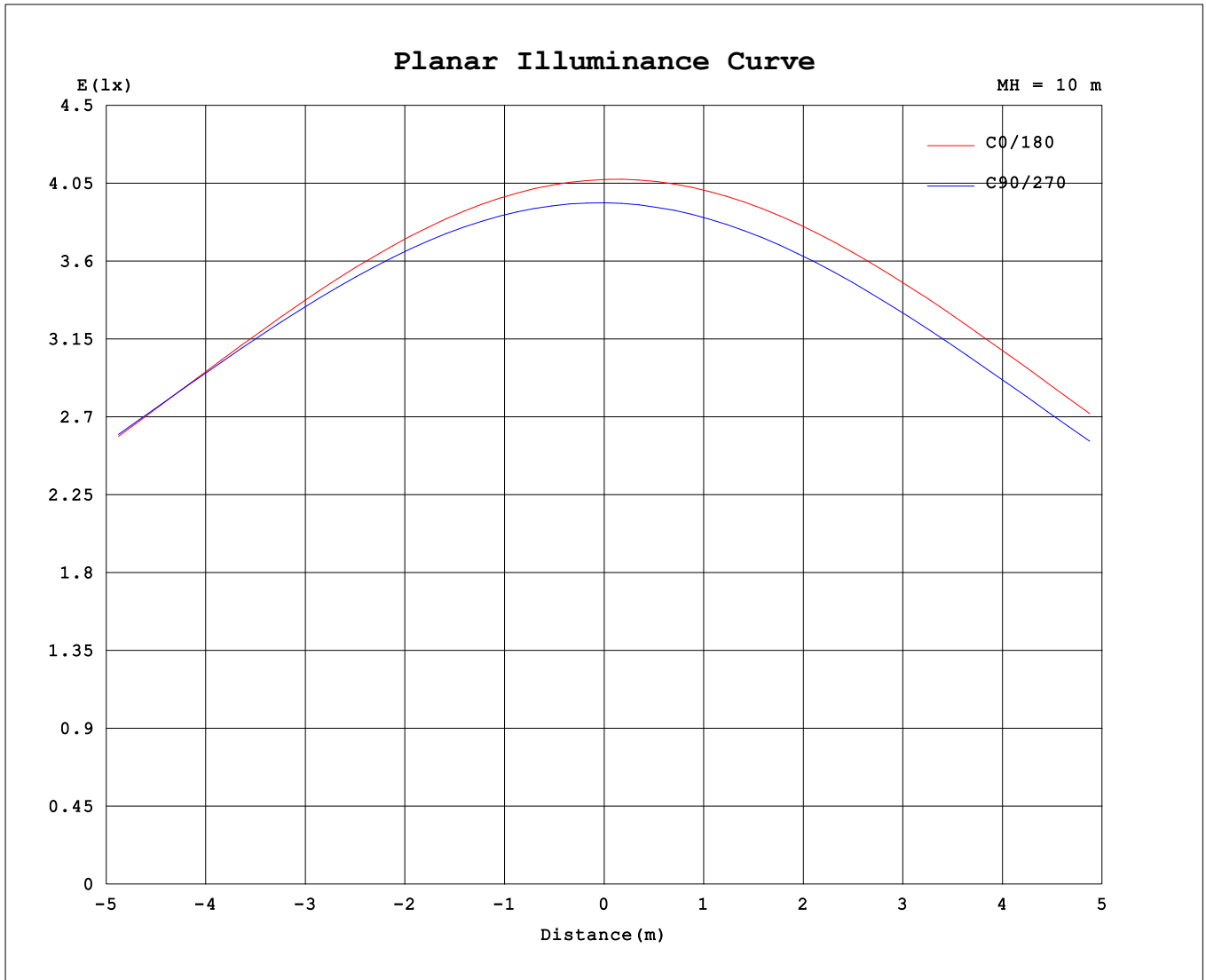
AvgL	cd/m2
L_0~180 (65) av	47000
L_0~180 (75) av	42186
L_0~180 (85) av	40796
L_90~270 (65) av	46873
L_90~270 (75) av	41995
L_90~270 (85) av	34044
L_45 (65) av	45996
L_45 (75) av	41597
L_45 (85) av	36908

Standard: GB/T 29293-2012

C Range: 0 - 360DEG
 C Interval: 15.0DEG
 Test Speed: HIGH
 Temperature:25.3℃
 Operators:DAMIN
 Test Date:2023-08-12

Range: 0 - 180DEG
 Interval: 1.0DEG
 Test System:EVERFINE GO-2000B_V1 SYSTEM V2.00.471
 Humidity:65.0%
 Test Distance:4.880m [K=1.0000]
 Remarks:

Planar Illuminance Curve



C Range: 0 - 360DEG
 C Interval: 15.0DEG
 Test Speed: HIGH
 Temperature: 25.3°C
 Operators: DAMIN
 Test Date: 2023-08-12

Range: 0 - 180DEG
 Interval: 1.0DEG
 Test System: EVERFINE GO-2000B_V1 SYSTEM V2.00.471
 Humidity: 65.0%
 Test Distance: 4.880m [K=1.0000]
 Remarks:

LUMINOUS DISTRIBUTION INTENSITY DATA

Table--1

UNIT: cd

C (DEG) \ □ (DEG)	0	15	30	45	60	75	90	105	120	135	150	165	180	195	210	225	240	255	270
0	407	405	402	401	401	397	394	393	393	395	398	400	407	405	402	401	401	397	394
5	404	403	399	399	399	396	393	392	392	394	397	400	407	405	402	400	400	395	392
10	398	397	394	393	394	392	389	388	388	390	393	396	404	402	398	397	396	390	387
15	388	388	385	385	386	385	383	382	382	384	387	390	398	395	392	390	389	382	379
20	375	376	374	374	375	375	373	373	372	374	377	381	389	386	383	381	379	372	369
25	360	361	359	360	361	363	361	361	360	362	365	368	377	374	371	369	367	358	355
30	341	343	342	343	345	347	346	346	345	347	349	353	362	359	356	354	351	342	340
35	320	322	322	323	326	329	328	328	328	330	331	336	344	341	339	336	332	323	321
40	296	298	299	301	304	308	307	308	307	309	311	315	324	320	318	315	311	302	299
45	269	271	273	275	279	284	283	284	284	286	287	292	300	297	295	292	287	278	275
50	240	242	243	247	251	257	257	258	258	260	262	266	274	271	269	266	261	251	249
55	208	210	212	215	220	227	228	229	230	232	233	238	245	242	240	237	232	222	220
60	174	175	177	181	187	195	196	198	199	201	203	207	214	211	209	206	200	191	188
65	138	139	141	145	151	160	162	164	166	168	170	175	180	178	176	172	166	158	155
70	101	103	104	108	113	124	126	129	130	134	136	141	145	143	141	137	131	123	120
75	65.9	66.5	67.3	70.7	75.9	86.6	89.9	93.3	95.3	99.4	102	107	109	107	105	102	95.8	88.0	84.0
80	36.1	35.7	35.7	37.4	41.6	51.0	56.2	58.5	61.5	65.6	68.6	73.0	73.4	72.0	69.7	66.2	61.0	54.0	49.4
85	15.2	14.9	13.9	14.1	15.9	23.3	26.8	29.5	32.6	36.9	39.9	43.0	41.7	40.2	38.1	34.6	30.5	24.7	20.6
90	4.14	3.98	3.51	3.48	4.69	8.78	8.94	11.5	14.2	17.3	20.2	21.7	19.1	17.4	15.3	12.1	9.33	6.01	1.99
95	1.84	1.86	1.85	1.80	2.59	5.64	1.50	5.42	6.81	8.02	9.51	10.4	7.06	6.09	4.87	3.28	1.94	1.51	1.45
100	1.61	1.60	1.59	1.53	1.93	4.16	1.66	1.47	5.21	5.83	6.59	6.60	1.94	1.69	1.52	1.42	1.45	1.50	1.54
105	1.73	1.73	1.71	1.70	1.71	2.58	1.84	1.60	1.70	5.05	6.01	6.66	1.54	1.53	1.54	1.56	1.62	1.70	1.77
110	1.97	1.97	1.96	1.95	1.95	1.97	1.89	1.82	1.76	1.93	4.63	6.22	1.75	1.75	1.78	1.81	1.87	1.97	2.05
115	2.22	2.22	2.21	2.20	2.20	2.28	2.17	2.07	2.01	1.97	2.18	3.76	2.00	2.01	2.03	2.07	2.13	2.24	2.32
120	2.47	2.47	2.46	2.45	2.43	2.50	2.41	2.31	2.25	2.22	2.18	2.36	2.25	2.26	2.28	2.32	2.39	2.50	2.58
125	2.71	2.71	2.71	2.71	2.67	2.62	2.59	2.56	2.50	2.46	2.41	2.36	2.50	2.51	2.53	2.57	2.64	2.75	2.84
130	2.96	2.96	2.96	2.95	2.92	2.86	2.83	2.79	2.74	2.72	2.65	2.59	2.74	2.75	2.78	2.82	2.89	3.00	3.08
135	3.19	3.20	3.20	3.20	3.16	3.11	3.07	3.03	2.98	2.98	2.91	2.83	2.98	2.99	3.02	3.06	3.13	3.24	3.33
140	3.42	3.45	3.44	3.44	3.40	3.34	3.31	3.27	3.26	3.24	3.17	3.11	3.23	3.23	3.26	3.30	3.37	3.47	3.56
145	3.64	3.68	3.67	3.66	3.62	3.57	3.53	3.50	3.52	3.51	3.44	3.34	3.47	3.47	3.50	3.54	3.60	3.70	3.78
150	3.86	3.90	3.89	3.88	3.84	3.79	3.75	3.73	3.79	3.78	3.72	3.62	3.70	3.71	3.73	3.76	3.82	3.91	3.99
155	4.08	4.11	4.09	4.08	4.04	4.00	3.96	3.94	4.05	4.05	3.99	3.95	3.94	3.93	3.95	3.98	4.03	4.11	4.19
160	4.28	4.29	4.28	4.26	4.23	4.19	4.15	4.14	4.30	4.32	4.28	4.29	4.17	4.14	4.16	4.18	4.22	4.30	4.37
165	4.47	4.47	4.44	4.43	4.41	4.47	4.53	4.60	4.61	4.60	4.58	4.65	4.39	4.34	4.36	4.36	4.40	4.47	4.54
170	4.62	4.62	4.58	4.58	4.57	4.61	4.68	4.75	4.81	4.91	4.91	5.06	4.57	4.52	4.53	4.53	4.57	4.61	4.69
175	4.74	4.73	4.70	4.70	4.69	4.73	4.79	4.87	4.93	5.05	5.25	5.56	4.72	4.67	4.67	4.67	4.69	4.73	4.80
180	4.81	4.78	4.76	4.76	4.76	4.80	4.85	4.94	5.01	5.11	5.32	5.91	4.80	4.78	4.76	4.75	4.76	4.80	4.86

C Range: 0 - 360DEG
 C Interval: 15.0DEG
 Test Speed: HIGH
 Temperature:25.3℃
 Operators:DAMIN
 Test Date:2023-08-12

□ Range: 0 - 180DEG
 □ Interval: 1.0DEG
 Test System:EVERFINE GO-2000B_V1 SYSTEM V2.00.471
 Humidity:65.0%
 Test Distance:4.880m [K=1.0000]
 Remarks:

LUMINOUS DISTRIBUTION INTENSITY DATA

Table--2

UNIT: cd

C (DEG) \ □ (DEG)	285	300	315	330	345														
0	393	393	395	398	400														
5	391	391	392	395	397														
10	386	387	387	389	391														
15	378	379	379	381	382														
20	368	368	368	369	367														
25	354	354	354	355	351														
30	338	338	338	336	334														
35	319	320	317	315	310														
40	298	298	293	293	285														
45	274	272	268	265	253														
50	246	245	239	236	223														
55	217	215	210	201	195														
60	185	183	175	169	163														
65	151	147	137	137	125														
70	114	107	105	104	73.7														
75	77.3	72.7	72.8	69.7	66.3														
80	39.9	42.5	42.0	32.8	40.7														
85	17.3	20.8	17.4	21.6	19.6														
90	4.69	6.85	8.19	8.89	7.57														
95	1.53	2.02	2.99	3.72	3.68														
100	1.60	1.69	1.97	2.38	2.81														
105	1.81	1.89	1.97	2.20	2.62														
110	2.08	2.14	2.21	2.31	2.71														
115	2.34	2.39	2.47	2.56	2.96														
120	2.61	2.64	2.72	2.83	3.24														
125	2.86	2.90	2.97	3.10	3.65														
130	3.11	3.15	3.23	3.38	4.19														
135	3.36	3.40	3.49	3.66	4.84														
140	3.59	3.64	3.75	4.04	5.48														
145	3.81	3.87	4.00	4.52	6.14														
150	4.03	4.09	4.26	5.04	6.70														
155	4.22	4.29	4.57	5.41	6.72														
160	4.41	4.49	4.73	5.27	5.87														
165	4.58	4.67	4.84	5.16	5.77														
170	4.73	4.84	4.97	5.23	5.91														
175	4.85	4.96	5.08	5.29	5.96														
180	4.94	5.02	5.11	5.31	6.02														

C Range: 0 - 360DEG
 C Interval: 15.0DEG
 Test Speed: HIGH
 Temperature:25.3°C
 Operators:DAMIN
 Test Date:2023-08-12

□ Range: 0 - 180DEG
 □ Interval: 1.0DEG
 Test System:EVERFINE GO-2000B_V1 SYSTEM V2.00.471
 Humidity:65.0%
 Test Distance:4.880m [K=1.0000]
 Remarks: