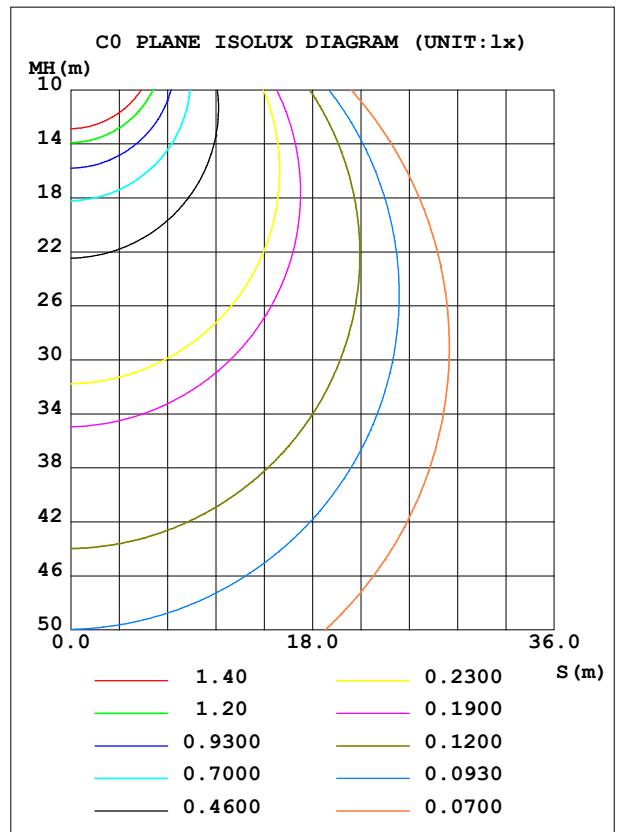
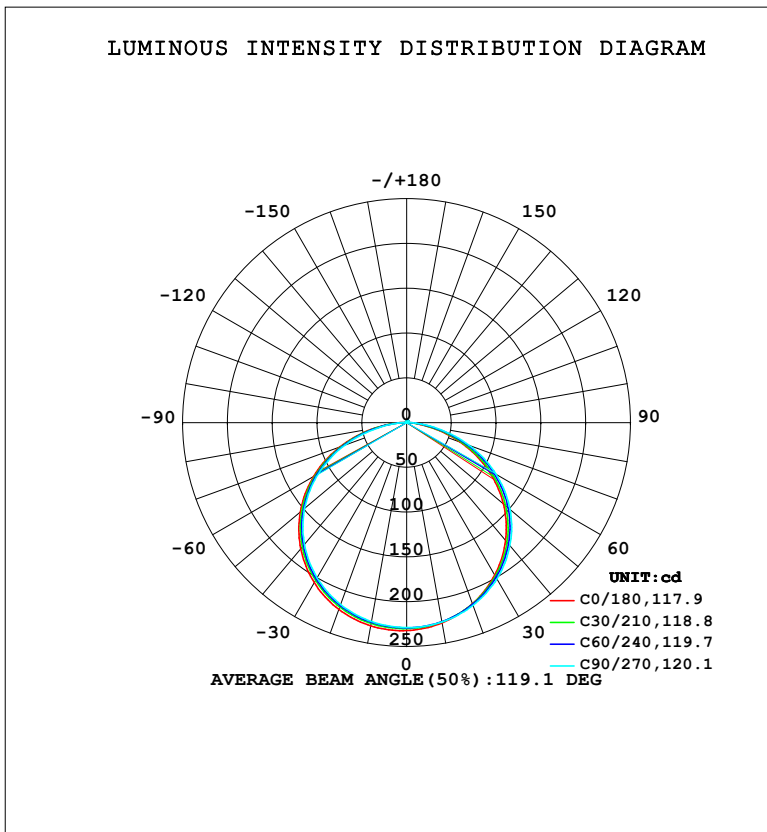


LUMINAIRE PHOTOMETRIC TEST REPORT

NAME: LED Strip	TYPE: Indoor lighting	WEIGHT: 75g
SPEC.: LED	DIM.: 500*8*1.9MM	SERIAL No.: 20231023041
MFR.: EVERFINE	SUR.: 500*8MM	Shielding Angle:

DATA OF LAMP		PHOTOMETRIC DATA			
WIDE BEAM S-CV-HE-EP-GEL (10.2W)		Imax (cd)	232.3	S/MH (C0/180)	1.32
NOMINAL POWER (W)	5.0935	LOR (%)	100.0	S/MH (C90/270)	1.30
RATED VOLTAGE (V)	DC 24V	TOTAL FLUX (lm)	715.61	η UP, DN (C0-180)	0.7,49.3
NOMINAL FLUX (lm)	715.612	CIE CLASS	DIRECT	η UP, DN (C180-360)	0.7,49.4
LAMPS INSIDE	1	η up (%)	1.4	CIBSE SHR NOM	1.50
TEST VOLTAGE (V)	DC 24V	η down (%)	98.6	CIBSE SHR MAX	1.50



C Range: 0 - 360DEG
 C Interval: 15.0DEG
 Test Speed: HIGH
 Temperature: 25.3°C
 Operators: DAMIN
 Test Date: 2023-10-23

γ Range: 0 - 180DEG
 γ Interval: 1.0DEG
 Test System: EVERFINE GO-2000B_V1 SYSTEM V2.00.471
 Humidity: 65.0%
 Test Distance: 4.880m [K=1.0000]
 Remarks:

ZONAL FLUX DIAGRAM

ZONAL FLUX DIAGRAM:

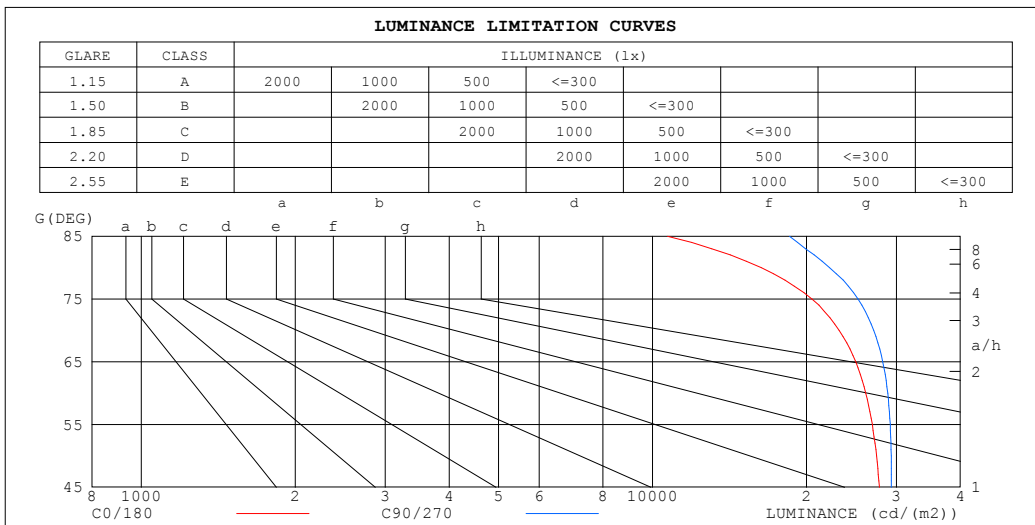
γ	C0	C45	C90	C135	C180	C225	C270	C315	γ	Φ zone	Φ total	%lum,lamp
10	227.0	225.8	226.1	227.3	230.5	226.8	225.6	225.5	0- 10	21.80	21.80	3.05,3.05
20	215.1	215.6	217.0	218.7	221.9	217.7	216.0	215.0	10- 20	62.92	84.72	11.8,11.8
30	196.7	199.0	201.5	203.5	206.4	202.0	200.0	198.0	20- 30	96.70	181.4	25.4,25.4
40	171.8	176.1	179.4	181.7	184.1	179.8	177.7	174.5	30- 40	119.0	300.4	42,42
50	141.0	146.6	150.7	153.1	155.2	151.1	148.9	144.8	40- 50	126.6	427.1	59.7,59.7
60	104.5	110.6	115.4	117.8	119.9	116.2	113.7	106.9	50- 60	117.7	544.8	76.1,76.1
70	63.39	69.12	74.05	77.02	79.29	75.89	73.12	65.69	60- 70	92.25	637.1	89,89
80	22.68	26.97	30.85	33.68	36.28	33.68	29.95	26.00	70- 80	53.71	690.8	96.5,96.5
90	1.052	1.868	2.333	3.266	4.140	3.491	1.800	1.584	80- 90	15.08	705.8	98.6,98.6
100	0.8665	0.8604	0.8919	0.8457	0.8004	0.8515	0.9463	0.9042	90-100	1.235	707.1	98.8,98.8
110	1.106	1.136	1.156	1.083	1.054	1.125	1.238	1.190	100-110	1.070	708.1	99,99
120	1.387	1.412	1.442	1.351	1.338	1.414	1.523	1.476	110-120	1.283	709.4	99.1,99.1
130	1.665	1.684	1.712	1.634	1.617	1.693	1.792	1.747	120-130	1.406	710.8	99.3,99.3
140	1.937	1.955	1.974	1.913	1.886	1.956	2.043	2.007	130-140	1.421	712.3	99.5,99.5
150	2.191	2.205	2.221	2.178	2.144	2.197	2.269	2.245	140-150	1.310	713.6	99.7,99.7
160	2.437	2.424	2.429	2.414	2.395	2.413	2.465	2.448	150-160	1.073	714.6	99.9,99.9
170	2.634	2.605	2.601	2.614	2.615	2.597	2.621	2.619	160-170	0.7158	715.4	100,100
180	2.735	2.703	2.711	2.720	2.735	2.697	2.709	2.716	170-180	0.2550	715.6	100,100
DEG	LUMINOUS INTENSITY:cd									UNIT:lm		

C Range: 0 - 360DEG
 C Interval: 15.0DEG
 Test Speed: HIGH
 Temperature:25.3°C
 Operators:DAMIN
 Test Date:2023-10-23

γ Range: 0 - 180DEG
 γ Interval: 1.0DEG
 Test System:EVERFINE GO-2000B_V1 SYSTEM V2.00.471
 Humidity:65.0%
 Test Distance:4.880m [K=1.0000]
 Remarks:

LUMINANCE LIMITATION CURVES

NAME: LED Strip	TYPE: Indoor lighting	WEIGHT: 75g
SPEC.: LED	DIM.: 500*8*1.9MM	SERIAL No.: 20231023041
MFR.: EVERFINE	SUR.: 500*8MM	Shielding Angle:



LUMINANCE cd/(m2)		
G (DEG)	C0/180	C90/270
85	10698	18541
80	16326	22204
75	20497	25229
70	23169	27064
65	24971	28213
60	26133	28843
55	26907	29176
50	27424	29307
45	27784	29328

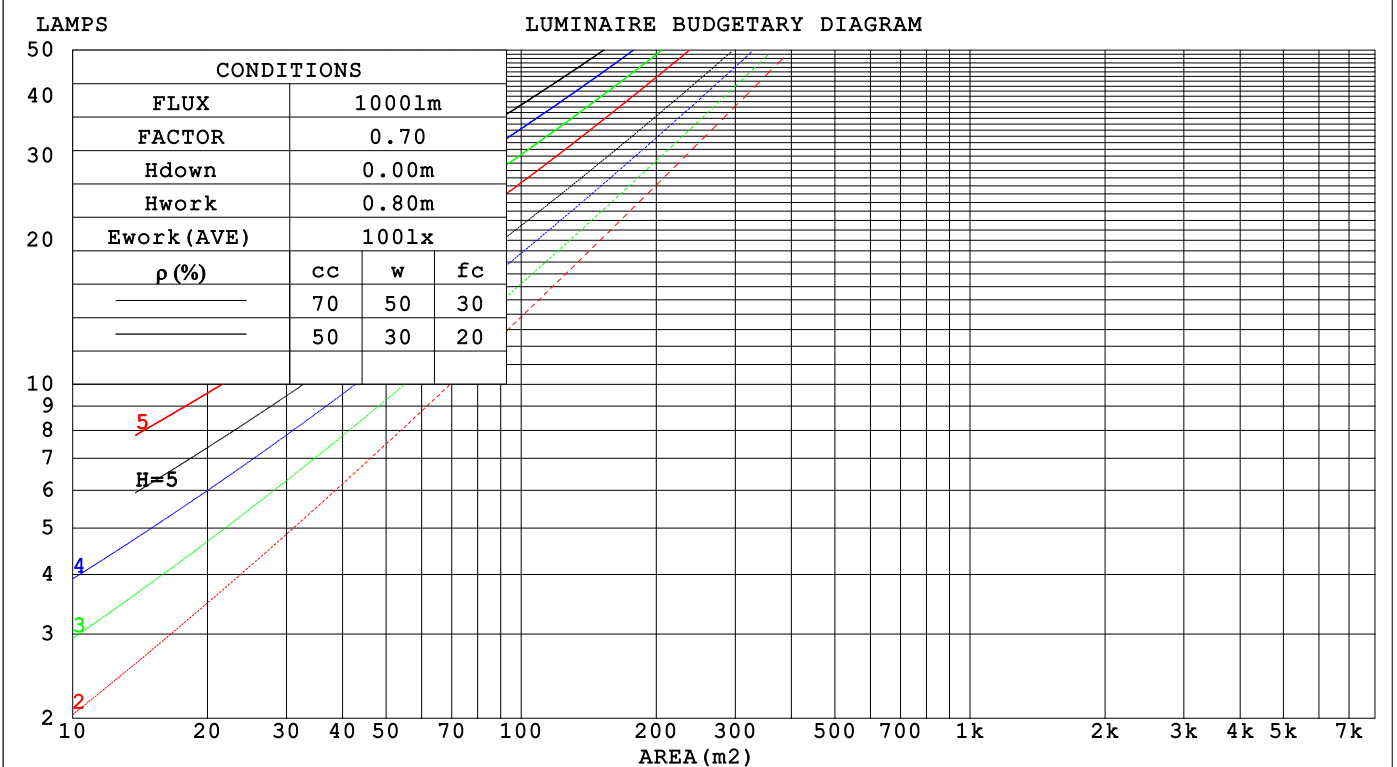
C Range: 0 - 360DEG
 C Interval: 15.0DEG
 Test Speed: HIGH
 Temperature: 25.3°C
 Operators: DAMIN
 Test Date: 2023-10-23

γ Range: 0 - 180DEG
 γ Interval: 1.0DEG
 Test System: EVERFINE GO-2000B_V1 SYSTEM V2.00.471
 Humidity: 65.0%
 Test Distance: 4.880m [K=1.0000]
 Remarks:

CU AND LUMINAIRE BUDGETARY ESTIMATE DIAGRAM

NAME: LED Strip	TYPE: Indoor lighting	WEIGHT: 75g
SPEC.: LED	DIM.: 500*8*1.9MM	SERIAL No.: 20231023041
MFR.: EVERFINE	SUR.: 500*8MM	Shielding Angle:

pcc	80%			70%			50%			30%			10%			0
p _w	50%	30%	10%	50%	30%	10%	50%	30%	10%	50%	30%	10%	50%	30%	10%	0
p _{fc}	20%			20%			20%			20%			20%			0
RCR	RCR:Room Cavity Ratio						Coefficients of Utilization(CU)									
0.0	1.19	1.19	1.19	1.16	1.16	1.16	1.10	1.10	1.10	1.05	1.05	1.05	1.01	1.01	1.01	.99
1.0	1.03	.99	.95	1.01	.97	.93	.96	.93	.90	.92	.89	.87	.88	.86	.84	.82
2.0	.89	.82	.77	.87	.81	.76	.84	.78	.74	.80	.76	.72	.77	.73	.70	.68
3.0	.78	.70	.63	.77	.69	.63	.73	.67	.61	.70	.65	.60	.68	.63	.59	.56
4.0	.69	.60	.53	.68	.59	.53	.65	.58	.52	.62	.56	.51	.60	.55	.50	.48
5.0	.62	.52	.46	.60	.52	.45	.58	.50	.45	.56	.49	.44	.54	.48	.43	.41
6.0	.55	.46	.40	.54	.46	.39	.52	.45	.39	.50	.44	.38	.49	.43	.38	.36
7.0	.50	.41	.35	.49	.41	.35	.47	.40	.34	.46	.39	.34	.44	.38	.34	.32
8.0	.46	.37	.31	.45	.37	.31	.43	.36	.31	.42	.35	.30	.41	.35	.30	.28
9.0	.42	.33	.28	.41	.33	.28	.40	.33	.27	.39	.32	.27	.38	.31	.27	.25
10.0	.38	.30	.25	.38	.30	.25	.37	.30	.25	.36	.29	.25	.35	.29	.24	.23



C Range: 0 - 360DEG
 C Interval: 15.0DEG
 Test Speed: HIGH
 Temperature: 25.3°C
 Operators: DAMIN
 Test Date: 2023-10-23

γ Range: 0 - 180DEG
 γ Interval: 1.0DEG
 Test System: EVERFINE GO-2000B_V1 SYSTEM V2.00.471
 Humidity: 65.0%
 Test Distance: 4.880m [K=1.0000]
 Remarks:

WEC AND CCEC

NAME: LED Strip	TYPE: Indoor lighting	WEIGHT: 75g
SPEC.: LED	DIM.: 500*8*1.9MM	SERIAL No.: 20231023041
MFR.: EVERFINE	SUR.: 500*8MM	Shielding Angle:

ρ_{cc}	80%			70%			50%			30%			10%			0
ρ_w	50%	30%	10%	50%	30%	10%	50%	30%	10%	50%	30%	10%	50%	30%	10%	0
ρ_{fc}	20%			20%			20%			20%			20%			0
RCR	RCR:Room Cavity Ratio						Wall Exitance Coefficients(WEC)									
0.0																
1.0	.318	.181	.057	.310	.177	.056	.296	.170	.054	.283	.163	.052	.271	.157	.051	
2.0	.298	.163	.050	.291	.161	.049	.279	.155	.048	.267	.150	.047	.257	.145	.046	
3.0	.275	.146	.044	.269	.144	.043	.258	.140	.043	.248	.136	.042	.238	.132	.041	
4.0	.253	.132	.039	.248	.130	.038	.238	.126	.038	.229	.123	.037	.221	.120	.037	
5.0	.234	.119	.035	.229	.118	.034	.220	.115	.034	.212	.112	.033	.204	.109	.033	
6.0	.216	.108	.031	.212	.107	.031	.204	.105	.030	.197	.102	.030	.190	.100	.030	
7.0	.201	.099	.028	.197	.098	.028	.190	.096	.028	.184	.094	.027	.178	.092	.027	
8.0	.188	.092	.026	.184	.091	.026	.178	.089	.025	.172	.087	.025	.167	.085	.025	
9.0	.176	.085	.024	.173	.084	.024	.167	.083	.023	.162	.081	.023	.157	.080	.023	
10.0	.165	.079	.022	.162	.078	.022	.157	.077	.022	.152	.076	.022	.148	.074	.021	

ρ_{cc}	80%			70%			50%			30%			10%			0
ρ_w	50%	30%	10%	50%	30%	10%	50%	30%	10%	50%	30%	10%	50%	30%	10%	0
ρ_{fc}	20%			20%			20%			20%			20%			0
RCR	RCR:Room Cavity Ratio						Ceiling Cavity Exitance Coefficients(CCEC)									
0.0	.201	.201	.201	.172	.172	.172	.117	.117	.117	.067	.067	.067	.022	.022	.022	
1.0	.191	.167	.144	.164	.143	.124	.112	.098	.086	.064	.057	.050	.021	.018	.016	
2.0	.184	.142	.108	.157	.123	.093	.108	.085	.065	.062	.049	.038	.020	.016	.012	
3.0	.176	.125	.084	.151	.108	.073	.104	.075	.051	.060	.044	.030	.019	.014	.010	
4.0	.169	.112	.068	.145	.097	.059	.099	.067	.042	.058	.039	.025	.019	.013	.008	
5.0	.161	.101	.057	.138	.088	.050	.095	.061	.035	.055	.036	.021	.018	.012	.007	
6.0	.154	.093	.049	.132	.081	.043	.091	.056	.030	.053	.033	.018	.017	.011	.006	
7.0	.147	.086	.044	.126	.075	.038	.087	.052	.027	.051	.031	.016	.016	.010	.005	
8.0	.141	.080	.039	.121	.070	.034	.084	.049	.024	.049	.029	.014	.016	.009	.005	
9.0	.134	.076	.036	.116	.066	.031	.080	.046	.022	.047	.027	.013	.015	.009	.004	
10.0	.129	.071	.033	.111	.062	.029	.077	.044	.021	.045	.026	.012	.015	.008	.004	

C Range: 0 - 360DEG
 C Interval: 15.0DEG
 Test Speed: HIGH
 Temperature:25.3°C
 Operators:DAMIN
 Test Date:2023-10-23

γ Range: 0 - 180DEG
 γ Interval: 1.0DEG
 Test System:EVERFINE GO-2000B_V1 SYSTEM V2.00.471
 Humidity:65.0%
 Test Distance:4.880m [K=1.0000]
 Remarks:

UGR(Unified Glare Rating) Table

NAME: LED Strip		TYPE: Indoor lighting				WEIGHT: 75g					
SPEC.: LED		DIM.: 500*8*1.9MM				SERIAL No.: 20231023041					
MFR.: EVERFINE		SUR.: 500*8MM				Shielding Angle:					
ceiling/cavity		0.7	0.7	0.5	0.5	0.3	0.7	0.7	0.5	0.5	0.3
walls		0.5	0.3	0.5	0.3	0.3	0.5	0.3	0.5	0.3	0.3
working plane		0.2	0.2	0.2	0.2	0.2	0.2	0.2	0.2	0.2	0.2
Room dimensions		Viewed crosswise					Viewed endwise				
x = 2H y = 2H		25.4	26.9	25.7	27.1	27.4	25.8	27.3	26.0	27.5	27.7
	3H	26.8	28.3	27.2	28.5	28.8	27.4	28.8	27.7	29.1	29.3
	4H	27.4	28.7	27.7	29.0	29.3	28.0	29.4	28.4	29.7	30.0
	6H	27.7	29.0	28.0	29.3	29.6	28.5	29.8	28.9	30.1	30.4
	8H	27.8	29.0	28.1	29.3	29.6	28.6	29.9	29.0	30.2	30.5
	12H	27.8	28.9	28.1	29.3	29.6	28.7	29.9	29.1	30.2	30.5
	4H 2H	26.0	27.4	26.4	27.7	28.0	26.3	27.7	26.7	28.0	28.3
	3H	27.7	28.9	28.1	29.2	29.5	28.2	29.3	28.5	29.7	30.0
	4H	28.3	29.4	28.7	29.8	30.1	28.9	30.0	29.3	30.4	30.7
	6H	28.7	29.7	29.2	30.1	30.5	29.5	30.5	29.9	30.8	31.2
	8H	28.9	29.7	29.3	30.1	30.6	29.7	30.6	30.1	31.0	31.4
	12H	28.9	29.7	29.3	30.1	30.6	29.8	30.6	30.3	31.0	31.5
	8H 4H	28.6	29.5	29.0	29.9	30.3	29.1	30.0	29.6	30.4	30.8
	6H	29.2	29.9	29.6	30.3	30.8	29.9	30.6	30.3	31.0	31.5
	8H	29.3	30.0	29.8	30.4	30.9	30.1	30.8	30.6	31.2	31.7
	12H	29.4	30.0	29.9	30.5	31.0	30.3	30.9	30.8	31.3	31.9
	12H 4H	28.6	29.4	29.1	29.9	30.3	29.1	30.0	29.6	30.4	30.8
	6H	29.2	29.9	29.7	30.3	30.8	29.9	30.5	30.4	31.0	31.5
	8H	29.4	30.0	29.9	30.5	31.0	30.2	30.7	30.7	31.2	31.7
Variations with the observer position at spacings(CIE Pub.117):											
S = 1.0H		+ 0.2 / - 0.2					+ 0.1 / - 0.2				
1.5H		+ 0.2 / - 0.4					+ 0.2 / - 0.3				
2.0H		+ 0.2 / - 0.4					+ 0.2 / - 0.3				

CIE Pub.117, 715.6 lm Total Lamp Luminous Flux Correct (8log(F/F0) = -1.2)
 Area: 0.008 m2

C Range: 0 - 360DEG
 C Interval: 15.0DEG
 Test Speed: HIGH
 Temperature:25.3°C
 Operators:DAMIN
 Test Date:2023-10-23

γ Range: 0 - 180DEG
 γ Interval: 1.0DEG
 Test System:EVERFINE GO-2000B_V1 SYSTEM V2.00.471
 Humidity:65.0%
 Test Distance:4.880m [K=1.0000]
 Remarks:

UTILIZATION FACTORS TABLE

NAME: LED Strip	TYPE: Indoor lighting	WEIGHT: 75g
SPEC.: LED	DIM.: 500*8*1.9MM	SERIAL No.: 20231023041
MFR.: EVERFINE	SUR.: 500*8MM	Shielding Angle:

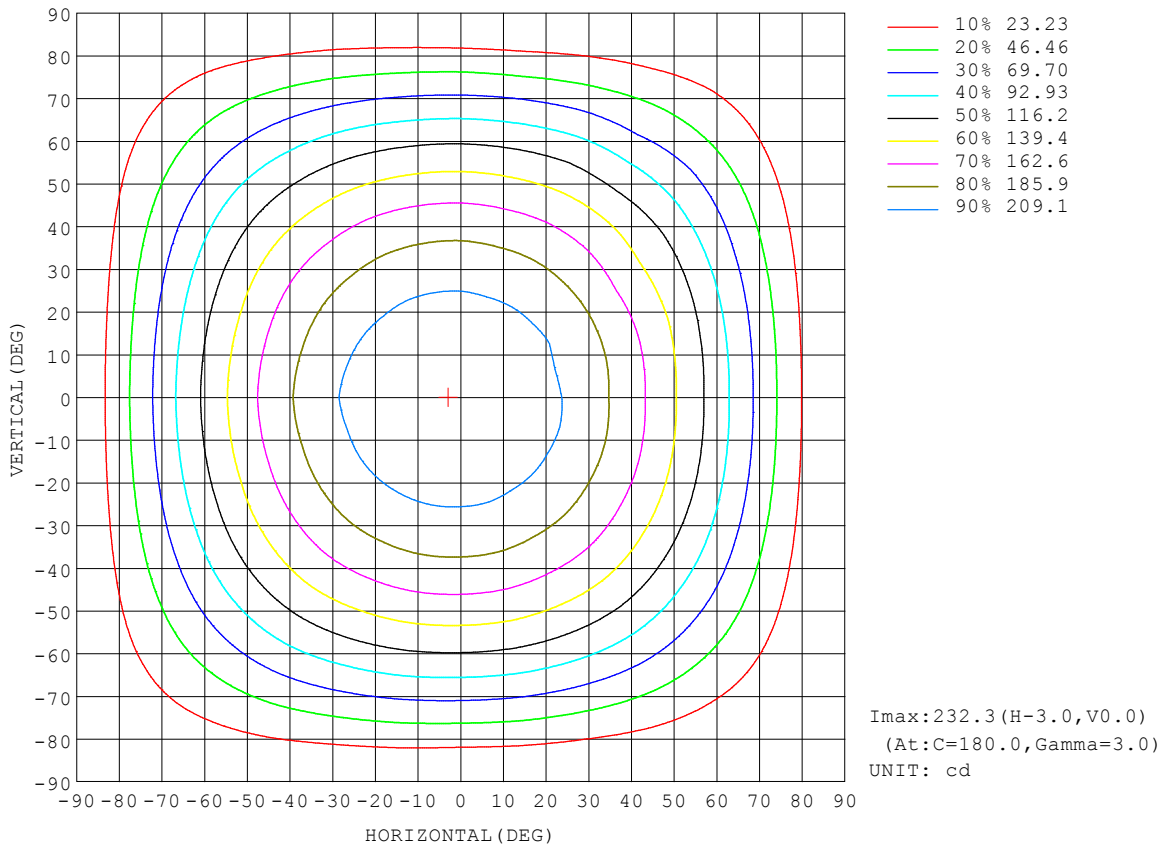
REFLECTANCE										
Ceiling	0.8	0.8	0.8	0.7	0.7	0.7	0.5	0.5	0.5	0
Walls	0.7	0.5	0.3	0.7	0.5	0.3	0.7	0.5	0.3	0
Working plane	0.2	0.2	0.2	0.2	0.2	0.2	0.2	0.2	0.2	0
ROOM INDEX	UTILIZATION FACTORS (PERCENT) $k(RI) \times RCR = 5$									
$k = 0.60$	56	44	37	55	44	37	54	43	37	30
0.80	66	54	47	65	54	46	63	53	46	39
1.00	74	63	56	73	62	55	71	64	55	47
1.25	82	71	63	80	70	63	77	68	62	54
1.50	87	77	69	85	76	69	82	74	68	60
2.00	94	85	78	92	84	77	88	81	76	68
2.50	98	90	84	96	88	83	92	85	81	72
3.00	101	94	88	99	92	87	95	89	85	76
4.00	105	100	95	103	98	93	98	94	90	81
5.00	108	103	99	105	101	97	101	97	94	84
ROOM INDEX	UF(total)									Direct
According to DIN EN 13032-2 2004			Suspended				SHRNOM = 1.25			

C Range: 0 - 360DEG
 C Interval: 15.0DEG
 Test Speed: HIGH
 Temperature: 25.3°C
 Operators: DAMIN
 Test Date: 2023-10-23

γ Range: 0 - 180DEG
 γ Interval: 1.0DEG
 Test System: EVERFINE GO-2000B_V1 SYSTEM V2.00.471
 Humidity: 65.0%
 Test Distance: 4.880m [K=1.0000]
 Remarks:

ISOCANDELA DIAGRAM

NAME: LED Strip	TYPE: Indoor lighting	WEIGHT: 75g
SPEC.: LED	DIM.: 500*8*1.9MM	SERIAL No.: 20231023041
MFR.: EVERFINE	SUR.: 500*8MM	Shielding Angle:

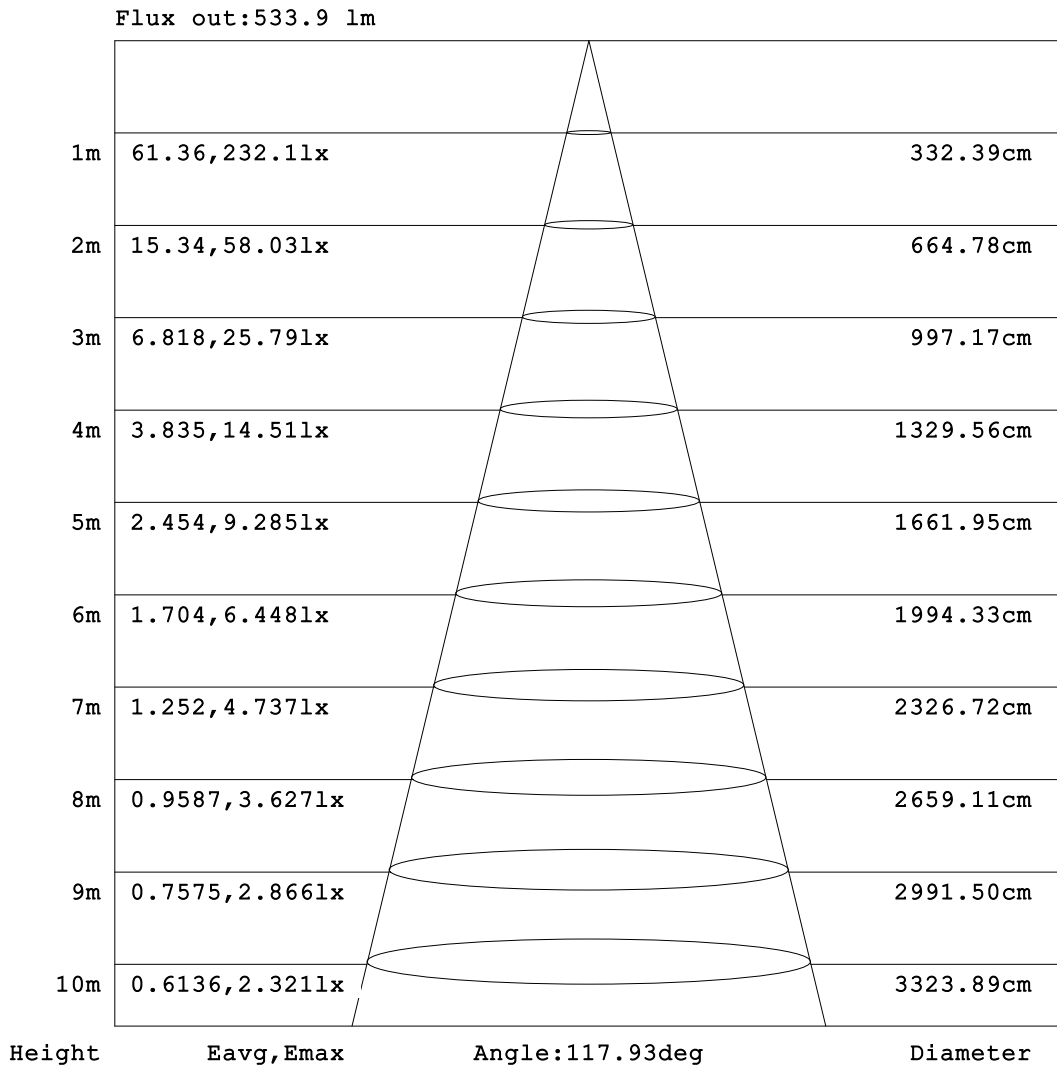


C Range: 0 - 360DEG
 C Interval: 15.0DEG
 Test Speed: HIGH
 Temperature: 25.3°C
 Operators: DAMIN
 Test Date: 2023-10-23

γ Range: 0 - 180DEG
 γ Interval: 1.0DEG
 Test System: EVERFINE GO-2000B_V1 SYSTEM V2.00.471
 Humidity: 65.0%
 Test Distance: 4.880m [K=1.0000]
 Remarks:

AAI Figure

NAME: LED Strip	TYPE: Indoor lighting	WEIGHT: 75g
SPEC.: LED	DIM.: 500*8*1.9MM	SERIAL No.: 20231023041
MFR.: EVERFINE	SUR.: 500*8MM	Shielding Angle:



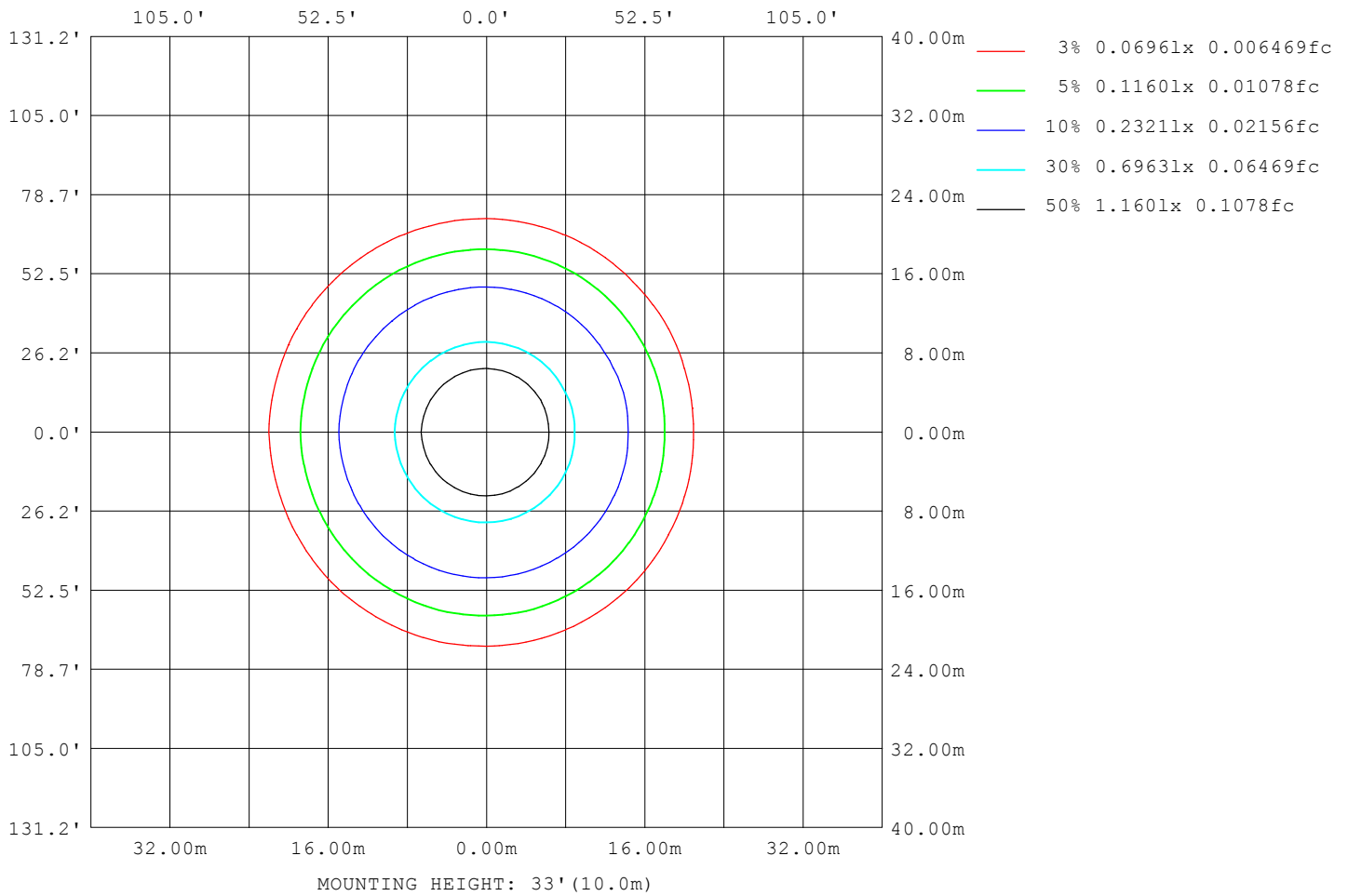
Note: The Curves indicate the illuminated area and the average illumination when the luminaire is at different distance.

C Range: 0 - 360DEG
 C Interval: 15.0DEG
 Test Speed: HIGH
 Temperature: 25.3°C
 Operators: DAMIN
 Test Date: 2023-10-23

γ Range: 0 - 180DEG
 γ Interval: 1.0DEG
 Test System: EVERFINE GO-2000B_V1 SYSTEM V2.00.471
 Humidity: 65.0%
 Test Distance: 4.880m [K=1.0000]
 Remarks:

ISOLUX DIAGRAM

NAME: LED Strip	TYPE: Indoor lighting	WEIGHT: 75g
SPEC.: LED	DIM.: 500*8*1.9MM	SERIAL No.: 20231023041
MFR.: EVERFINE	SUR.: 500*8MM	Shielding Angle:



C Range: 0 - 360DEG
 C Interval: 15.0DEG
 Test Speed: HIGH
 Temperature: 25.3°C
 Operators: DAMIN
 Test Date: 2023-10-23

γ Range: 0 - 180DEG
 γ Interval: 1.0DEG
 Test System: EVERFINE GO-2000B_V1 SYSTEM V2.00.471
 Humidity: 65.0%
 Test Distance: 4.880m [K=1.0000]
 Remarks:

LED Avg.L Report

NAME: LED Strip	TYPE: Indoor lighting	WEIGHT: 75g
SPEC.: LED	DIM.: 500*8*1.9MM	SERIAL No.: 20231023041
MFR.: EVERFINE	SUR.: 500*8MM	Shielding Angle:

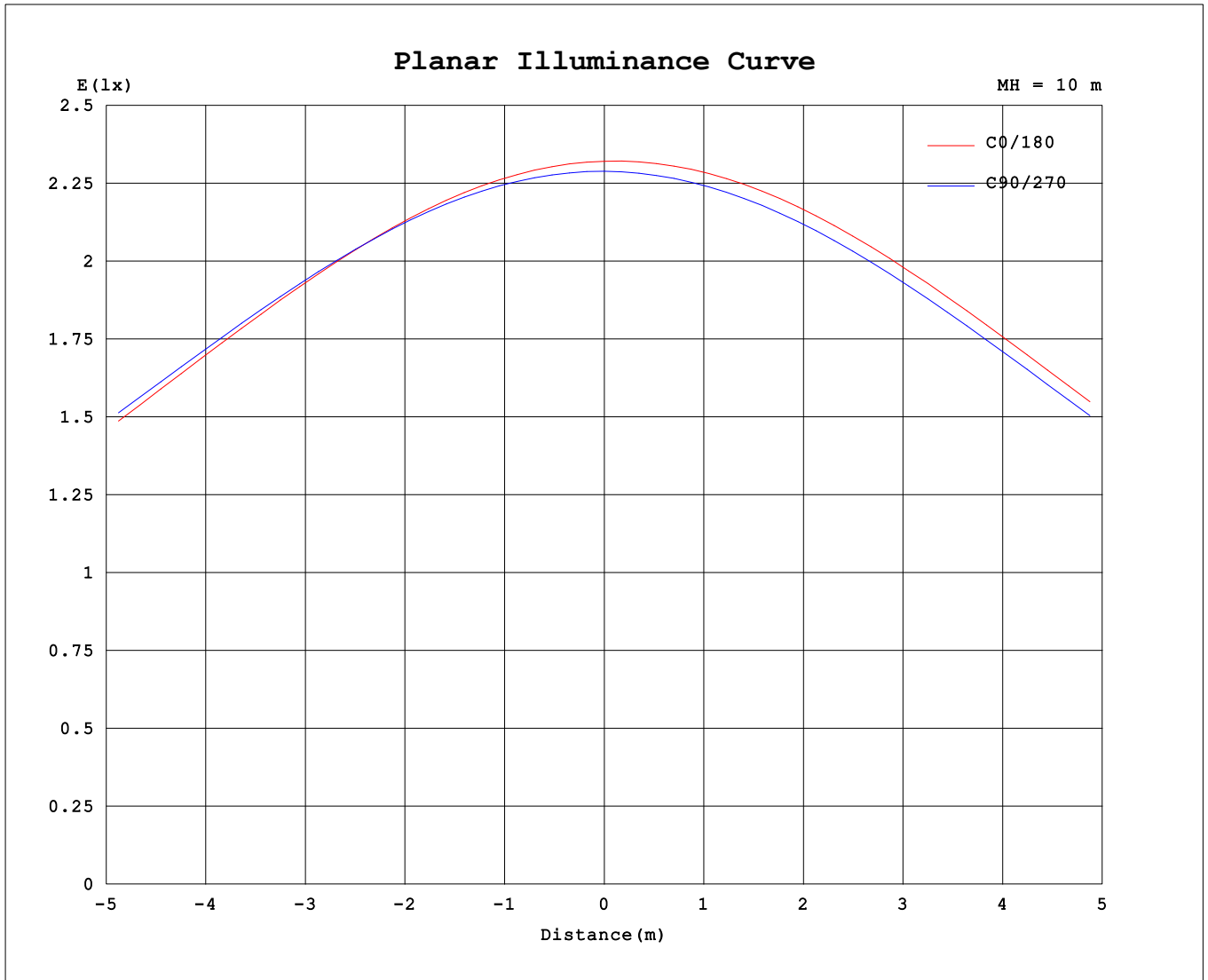
AvgL	cd/m2
L_0~180 (65) av	27299
L_0~180 (75) av	24147
L_0~180 (85) av	17737
L_90~270 (65) av	28014
L_90~270 (75) av	25070
L_90~270 (85) av	18231
L_45 (65) av	27630
L_45 (75) av	24660
L_45 (85) av	18276

Standard: GB/T 29293-2012

C Range: 0 - 360DEG
 C Interval: 15.0DEG
 Test Speed: HIGH
 Temperature:25.3℃
 Operators:DAMIN
 Test Date:2023-10-23

γ Range: 0 - 180DEG
 γ Interval: 1.0DEG
 Test System:EVERFINE GO-2000B_V1 SYSTEM V2.00.471
 Humidity:65.0%
 Test Distance:4.880m [K=1.0000]
 Remarks:

Planar Illuminance Curve



C Range: 0 - 360DEG
 C Interval: 15.0DEG
 Test Speed: HIGH
 Temperature: 25.3°C
 Operators: DAMIN
 Test Date: 2023-10-23

γ Range: 0 - 180DEG
 γ Interval: 1.0DEG
 Test System: EVERFINE GO-2000B_V1 SYSTEM V2.00.471
 Humidity: 65.0%
 Test Distance: 4.880m [K=1.0000]
 Remarks:

LUMINOUS DISTRIBUTION INTENSITY DATA

NAME: LED Strip	TYPE: Indoor lighting	WEIGHT: 75g
SPEC.: LED	DIM.: 500*8*1.9MM	SERIAL No.: 20231023041
MFR.: EVERFINE	SUR.: 500*8MM	Shielding Angle:

Table--1

UNIT: cd

C (DEG) \ γ (DEG)	0	15	30	45	60	75	90	105	120	135	150	165	180	195	210	225	240	255	270
0	232	232	230	229	229	229	229	229	229	229	231	232	232	232	230	229	229	229	229
5	230	230	229	228	228	228	228	228	229	229	230	231	232	231	230	229	229	228	228
10	227	227	226	226	226	226	226	226	227	227	228	229	230	229	228	227	226	226	226
15	222	222	221	221	222	222	222	223	223	224	225	226	227	226	224	223	223	222	222
20	215	216	215	216	216	217	217	217	218	219	220	220	222	220	219	218	217	217	216
25	207	208	207	208	208	210	210	211	211	212	213	213	215	213	212	211	210	209	209
30	197	198	198	199	200	201	202	202	203	204	204	205	206	205	203	202	202	201	200
35	185	186	187	188	189	191	191	192	193	193	194	194	196	194	193	192	191	190	190
40	172	173	174	176	177	179	179	180	181	182	182	182	184	182	181	180	179	178	178
45	157	159	160	162	163	165	166	167	167	168	168	169	170	169	168	166	166	165	164
50	141	143	144	147	148	150	151	152	152	153	153	153	155	153	153	151	151	150	149
55	123	125	127	129	131	133	134	135	135	136	136	136	138	137	136	134	134	133	132
60	105	106	108	111	112	115	115	117	117	118	118	118	120	118	118	116	115	114	114
65	84.4	86.0	87.7	90.3	92.5	94.4	95.4	96.6	97.1	97.8	97.8	98.0	100	98.7	98.1	96.6	95.9	94.5	94.0
70	63.4	65.0	66.4	69.1	71.1	73.2	74.1	75.4	75.8	77.0	76.7	77.4	79.3	77.9	77.4	75.9	75.1	73.7	73.1
75	42.4	43.9	45.2	47.6	49.4	51.6	52.2	53.7	54.1	55.0	55.1	55.5	57.6	56.6	55.9	54.7	53.7	52.5	51.6
80	22.7	24.0	24.9	27.0	28.3	30.3	30.8	32.3	32.7	33.7	33.7	34.3	36.3	35.3	34.9	33.7	33.0	31.5	30.0
85	7.46	8.42	8.97	10.4	11.2	12.6	12.9	14.2	14.3	15.2	15.1	15.8	17.3	16.5	16.3	15.3	14.9	13.7	12.5
90	1.05	1.28	1.48	1.87	2.08	2.50	2.33	2.94	3.00	3.27	3.27	3.53	4.14	3.83	3.90	3.49	3.37	2.67	1.80
95	0.89	0.96	0.99	0.96	0.92	0.84	0.85	0.96	0.93	0.97	1.09	1.12	0.93	0.97	1.02	1.00	0.89	0.91	0.91
100	0.87	0.87	0.86	0.86	0.87	0.89	0.89	0.90	0.84	0.85	0.95	0.99	0.80	0.81	0.83	0.85	0.90	0.93	0.95
105	0.96	0.97	0.97	0.99	1.00	1.01	1.01	0.99	0.95	0.95	1.03	1.08	0.91	0.91	0.95	0.98	1.02	1.05	1.08
110	1.11	1.12	1.11	1.14	1.14	1.16	1.16	1.13	1.09	1.08	1.16	1.22	1.05	1.06	1.09	1.12	1.17	1.20	1.24
115	1.25	1.26	1.25	1.28	1.28	1.30	1.30	1.28	1.23	1.22	1.29	1.35	1.20	1.21	1.24	1.27	1.32	1.35	1.39
120	1.39	1.39	1.39	1.41	1.41	1.44	1.44	1.42	1.38	1.35	1.42	1.48	1.34	1.34	1.38	1.41	1.46	1.49	1.52
125	1.53	1.53	1.53	1.55	1.55	1.57	1.58	1.56	1.52	1.49	1.54	1.60	1.48	1.48	1.52	1.55	1.60	1.63	1.66
130	1.67	1.67	1.67	1.68	1.69	1.71	1.71	1.70	1.66	1.63	1.66	1.73	1.62	1.62	1.66	1.69	1.74	1.76	1.79
135	1.80	1.82	1.81	1.82	1.82	1.85	1.85	1.84	1.79	1.78	1.77	1.85	1.75	1.76	1.80	1.83	1.87	1.89	1.92
140	1.94	1.96	1.94	1.95	1.95	1.97	1.97	1.97	1.93	1.91	1.88	1.97	1.89	1.89	1.93	1.96	2.00	2.02	2.04
145	2.07	2.09	2.07	2.08	2.08	2.10	2.10	2.10	2.06	2.04	2.02	2.06	2.02	2.03	2.06	2.08	2.12	2.14	2.16
150	2.19	2.22	2.20	2.20	2.20	2.22	2.22	2.22	2.19	2.18	2.17	2.13	2.14	2.15	2.18	2.20	2.23	2.25	2.27
155	2.32	2.33	2.31	2.32	2.31	2.33	2.33	2.33	2.30	2.30	2.31	2.27	2.27	2.27	2.30	2.31	2.34	2.35	2.37
160	2.44	2.44	2.42	2.42	2.42	2.44	2.43	2.43	2.41	2.41	2.42	2.40	2.39	2.38	2.41	2.41	2.44	2.45	2.46
165	2.54	2.54	2.52	2.52	2.51	2.53	2.52	2.53	2.51	2.52	2.57	2.57	2.52	2.49	2.51	2.51	2.53	2.54	2.55
170	2.63	2.63	2.60	2.61	2.60	2.61	2.60	2.61	2.60	2.61	2.68	2.72	2.62	2.59	2.60	2.60	2.62	2.61	2.62
175	2.70	2.69	2.66	2.67	2.66	2.68	2.67	2.67	2.66	2.68	2.76	2.83	2.69	2.66	2.67	2.66	2.68	2.67	2.68
180	2.74	2.72	2.70	2.70	2.70	2.70	2.71	2.71	2.70	2.72	2.80	2.86	2.74	2.72	2.71	2.70	2.70	2.70	2.71

C Range: 0 - 360DEG
 C Interval: 15.0DEG
 Test Speed: HIGH
 Temperature: 25.3°C
 Operators: DAMIN
 Test Date: 2023-10-23

γ Range: 0 - 180DEG
 γ Interval: 1.0DEG
 Test System: EVERFINE GO-2000B_V1 SYSTEM V2.00.471
 Humidity: 65.0%
 Test Distance: 4.880m [K=1.0000]
 Remarks:

LUMINOUS DISTRIBUTION INTENSITY DATA

NAME: LED Strip	TYPE: Indoor lighting	WEIGHT: 75g
SPEC.: LED	DIM.: 500*8*1.9MM	SERIAL No.: 20231023041
MFR.: EVERFINE	SUR.: 500*8MM	Shielding Angle:

Table--2

UNIT: cd

C (DEG) \ γ (DEG)	285	300	315	330	345														
0	229	229	229	231	232														
5	228	228	228	229	230														
10	225	225	225	226	227														
15	221	221	221	222	222														
20	215	215	215	216	216														
25	208	208	207	208	202														
30	199	199	198	198	196														
35	188	188	187	187	186														
40	176	176	174	171	174														
45	163	162	160	160	156														
50	147	147	145	142	143														
55	131	130	128	124	126														
60	112	111	107	108	107														
65	92.6	91.2	89.0	88.1	85.2														
70	71.6	70.0	65.7	66.9	64.6														
75	49.1	47.8	47.0	45.1	44.0														
80	28.4	27.9	26.0	25.9	23.7														
85	11.2	10.8	10.1	9.32	8.52														
90	1.62	1.53	1.58	1.41	1.35														
95	0.86	0.88	0.95	1.01	1.05														
100	0.93	0.93	0.90	0.94	1.02														
105	1.07	1.07	1.05	1.08	1.12														
110	1.22	1.21	1.19	1.22	1.27														
115	1.36	1.36	1.33	1.37	1.41														
120	1.50	1.49	1.48	1.50	1.55														
125	1.64	1.62	1.61	1.65	1.69														
130	1.77	1.76	1.75	1.78	1.83														
135	1.90	1.89	1.88	1.91	1.97														
140	2.02	2.01	2.01	2.01	2.09														
145	2.14	2.13	2.13	2.16	2.17														
150	2.25	2.25	2.24	2.27	2.27														
155	2.35	2.35	2.35	2.40	2.41														
160	2.45	2.45	2.45	2.52	2.55														
165	2.53	2.54	2.54	2.62	2.68														
170	2.61	2.61	2.62	2.70	2.77														
175	2.66	2.67	2.68	2.76	2.83														
180	2.70	2.70	2.72	2.80	2.87														

C Range: 0 - 360DEG
 C Interval: 15.0DEG
 Test Speed: HIGH
 Temperature:25.3°C
 Operators:DAMIN
 Test Date:2023-10-23

γ Range: 0 - 180DEG
 γ Interval: 1.0DEG
 Test System:EVERFINE GO-2000B_V1 SYSTEM V2.00.471
 Humidity:65.0%
 Test Distance:4.880m [K=1.0000]
 Remarks: