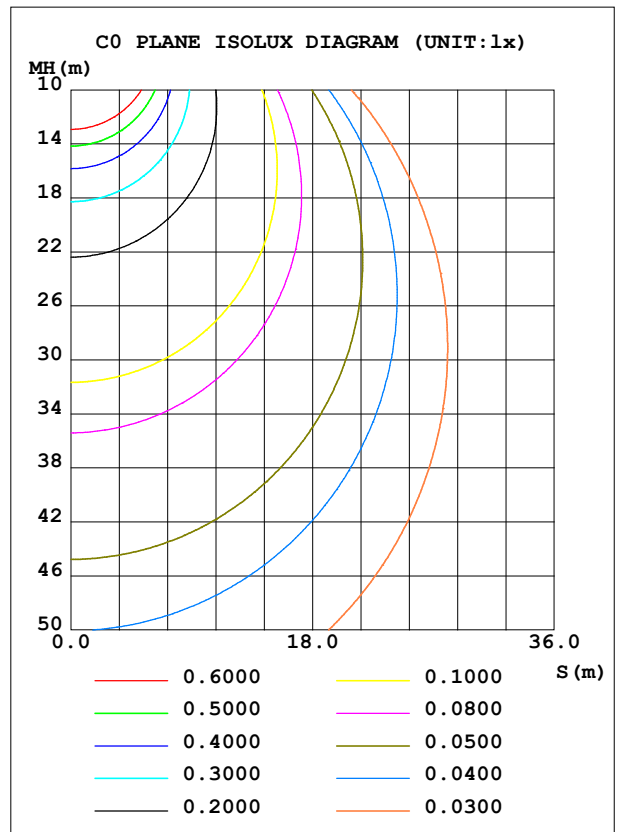
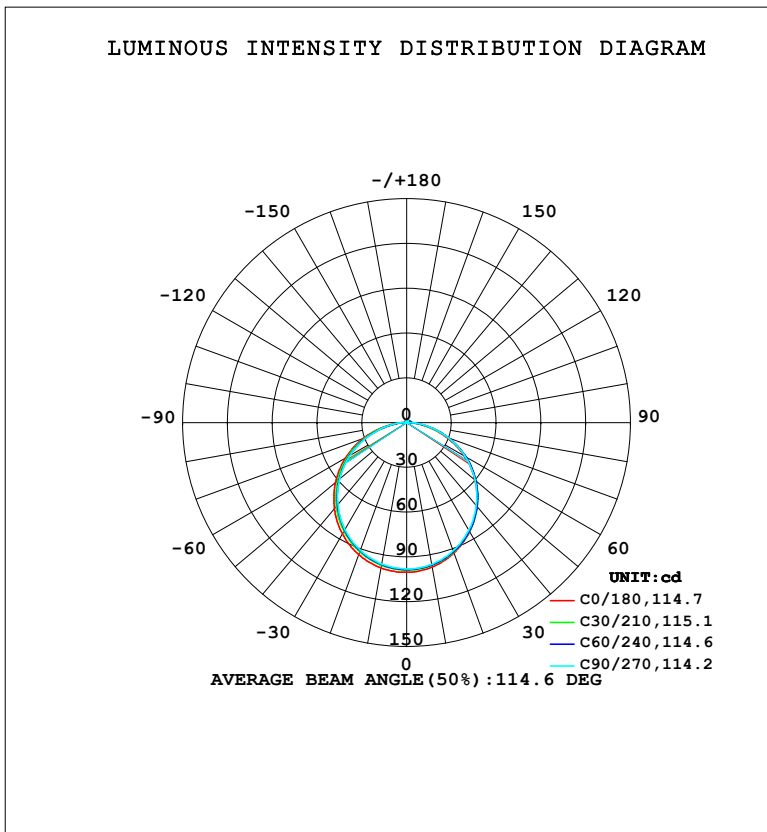


**LUMINAIRE PHOTOMETRIC TEST REPORT**

NAME: LED Strip	TYPE: Indoor lighting	WEIGHT: 75g
SPEC.: NEON LED	DIM.: 500*16*16MM	SERIAL No.: 20230518003
MFR.: EVERFINE	SUR.: 500*16MM	Shielding Angle:

DATA OF LAMP		PHOTOMETRIC DATA			
MODEL	CA4 4500-5000K	Imax (cd)	100.3	S/MH (C0/180)	1.28
NOMINAL POWER (W)	5.8444	LOR (%)	100.0	S/MH (C90/270)	1.25
RATED VOLTAGE (V)	DC 24V	TOTAL FLUX (lm)	300.09	<input type="checkbox"/> UP, DN (C0-180)	1.7,48.8
NOMINAL FLUX (lm)	300.086	CIE CLASS	DIRECT	<input type="checkbox"/> UP, DN (C180-360)	1.3,48.2
LAMPS INSIDE	1	<input type="checkbox"/> up (%)	3.0	CIBSE SHR NOM	1.25
TEST VOLTAGE (V)	DC 24V	<input type="checkbox"/> down (%)	97.0	CIBSE SHR MAX	1.35



C Range: 0 - 360DEG  
 C Interval: 15.0DEG  
 Test Speed: HIGH  
 Temperature: 25.3°C  
 Operators: DAMIN  
 Test Date: 2023-05-19

Range: 0 - 180DEG  
 Interval: 1.0DEG  
 Test System: EVERFINE GO-2000B\_V1 SYSTEM V2.00.471  
 Humidity: 65.0%  
 Test Distance: 4.880m [K=1.0000]  
 Remarks:

ZONAL FLUX DIAGRAM

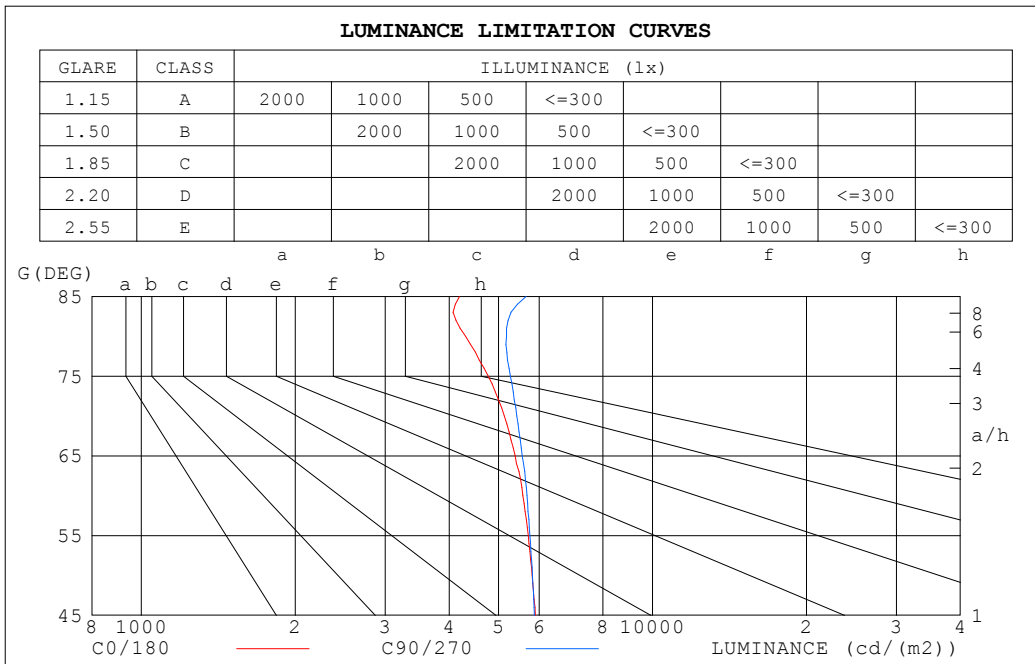
ZONAL FLUX DIAGRAM:

☐	C0	C45	C90	C135	C180	C225	C270	C315	☐	☐ zone	☐ total	%lum,lamp
10	98.30	97.04	96.42	96.83	98.89	96.63	96.20	96.83	0- 10	9.352	9.352	3.12,3.12
20	92.91	92.18	91.39	91.83	94.09	91.48	90.99	91.92	10- 20	26.82	36.17	12.1,12.1
30	84.40	84.29	83.32	83.87	86.13	83.30	82.72	83.94	20- 30	40.75	76.92	25.6,25.6
40	73.19	73.62	72.65	73.16	75.45	72.51	71.65	73.26	30- 40	49.37	126.3	42.1,42.1
50	59.81	60.66	59.87	60.15	62.22	59.55	58.63	60.30	40- 50	51.60	177.9	59.3,59.3
60	44.63	45.97	45.44	45.41	47.31	44.78	43.74	45.45	50- 60	47.32	225.2	75,75
70	28.05	29.78	29.68	29.29	30.91	28.36	27.50	28.96	60- 70	36.88	262.1	87.3,87.3
80	11.97	13.44	14.39	13.06	14.30	12.04	12.27	12.56	70- 80	21.82	283.9	94.6,94.6
90	2.808	3.018	3.851	2.615	2.590	1.561	1.886	1.678	80- 90	7.228	291.1	97,97
100	2.538	2.436	0.4093	1.962	1.555	1.189	0.3873	1.678	90-100	2.060	293.2	97.7,97.7
110	2.376	2.229	0.4533	1.555	1.524	1.163	0.4964	1.705	100-110	1.677	294.9	98.3,98.3
120	2.199	1.937	0.5697	1.240	1.448	1.137	0.6202	1.619	110-120	1.406	296.3	98.7,98.7
130	2.003	1.632	0.6958	1.106	1.376	1.113	0.7415	1.436	120-130	1.177	297.5	99.1,99.1
140	1.787	1.349	0.8123	1.072	1.304	1.102	0.8518	1.336	130-140	0.9543	298.4	99.4,99.4
150	1.566	1.176	0.9251	1.035	1.212	1.066	0.9584	1.207	140-150	0.7339	299.1	99.7,99.7
160	1.325	1.103	1.024	1.039	1.113	1.054	1.048	1.131	150-160	0.5170	299.7	99.9,99.9
170	1.156	1.119	1.105	1.120	1.131	1.109	1.125	1.118	160-170	0.3134	300.0	100,100
180	1.171	1.160	1.156	1.168	1.173	1.157	1.157	1.170	170-180	0.1092	300.1	100,100
DEG	LUMINOUS INTENSITY:cd									UNIT:lm		

C Range: 0 - 360DEG  
 C Interval: 15.0DEG  
 Test Speed: HIGH  
 Temperature:25.3°C  
 Operators:DAMIN  
 Test Date:2023-05-19

☐ Range: 0 - 180DEG  
 ☐ Interval: 1.0DEG  
 Test System:EVERFINE GO-2000B\_V1 SYSTEM V2.00.471  
 Humidity:65.0%  
 Test Distance:4.880m [K=1.0000]  
 Remarks:

**LUMINANCE LIMITATION CURVES**



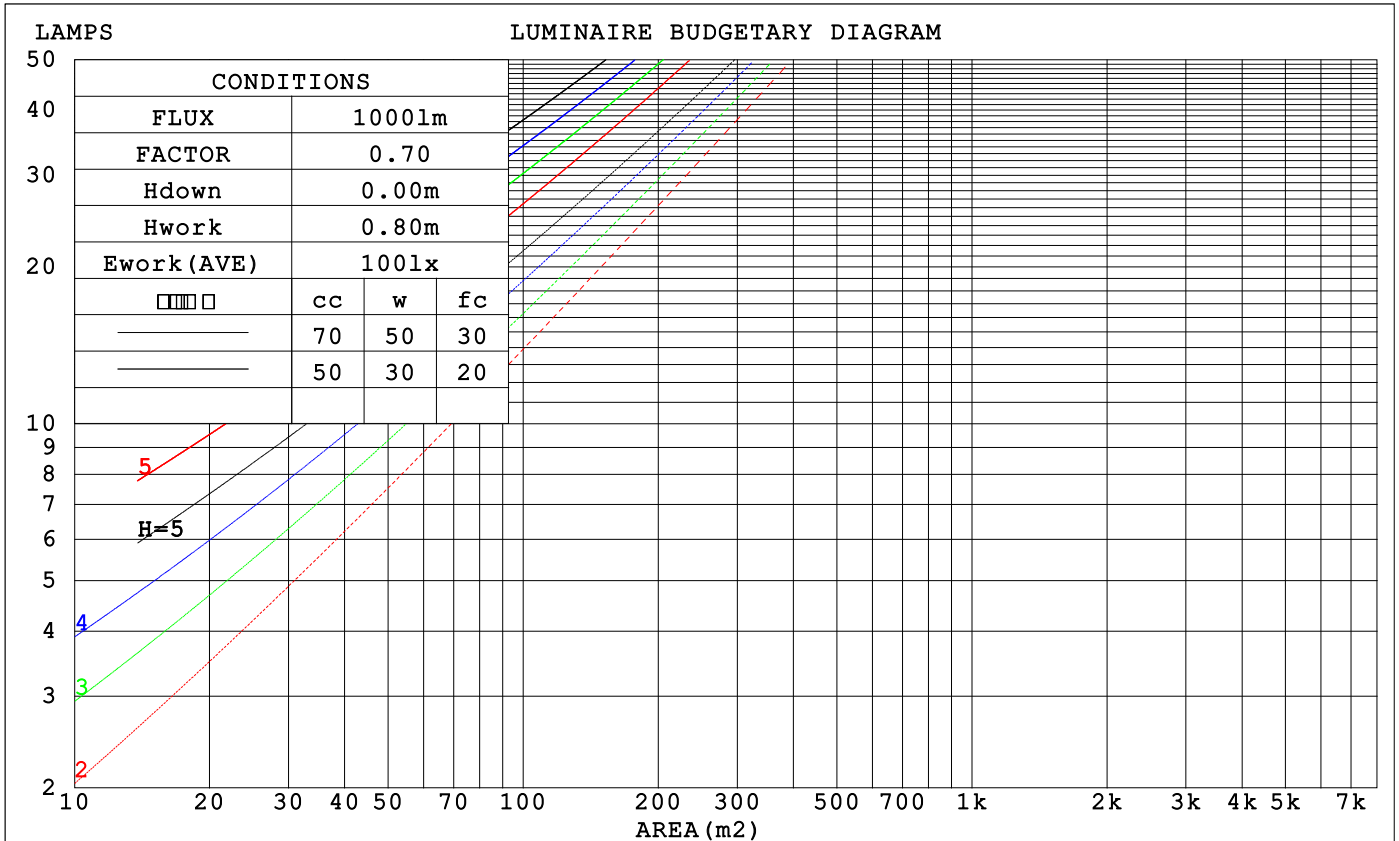
LUMINANCE cd/(m2)		
G (DEG)	C0/180	C90/270
85	4194	5657
80	4307	5179
75	4772	5274
70	5125	5424
65	5383	5560
60	5579	5680
55	5712	5756
50	5816	5821
45	5898	5877

C Range: 0 - 360DEG  
 C Interval: 15.0DEG  
 Test Speed: HIGH  
 Temperature: 25.3°C  
 Operators: DAMIN  
 Test Date: 2023-05-19

Range: 0 - 180DEG  
 Interval: 1.0DEG  
 Test System: EVERFINE GO-2000B\_V1 SYSTEM V2.00.471  
 Humidity: 65.0%  
 Test Distance: 4.880m [K=1.0000]  
 Remarks:

**CU AND LUMINAIRE BUDGETARY ESTIMATE DIAGRAM**

□cc	80%			70%			50%			30%			10%			0
□w	50%	30%	10%	50%	30%	10%	50%	30%	10%	50%	30%	10%	50%	30%	10%	0
□fc	20%			20%			20%			20%			20%			0
RCR	RCR:Room Cavity Ratio			Coefficients of Utilization(CU)												
0.0	1.18	1.18	1.18	1.15	1.15	1.15	1.09	1.09	1.09	1.04	1.04	1.04	.99	.99	.99	.97
1.0	1.03	.98	.94	1.00	.96	.93	.95	.92	.89	.91	.88	.86	.87	.85	.83	.80
2.0	.89	.82	.76	.87	.81	.75	.83	.78	.73	.79	.75	.71	.76	.72	.69	.67
3.0	.78	.70	.63	.76	.69	.62	.73	.66	.61	.70	.64	.60	.67	.62	.58	.56
4.0	.69	.60	.53	.68	.59	.53	.65	.57	.52	.62	.56	.51	.59	.54	.50	.47
5.0	.62	.53	.46	.60	.52	.45	.58	.50	.45	.56	.49	.44	.53	.48	.43	.41
6.0	.55	.46	.40	.54	.46	.40	.52	.45	.39	.50	.43	.38	.48	.42	.38	.36
7.0	.50	.41	.35	.49	.41	.35	.47	.40	.34	.46	.39	.34	.44	.38	.34	.31
8.0	.46	.37	.31	.45	.37	.31	.43	.36	.31	.42	.35	.30	.40	.34	.30	.28
9.0	.42	.34	.28	.41	.33	.28	.40	.33	.28	.39	.32	.27	.37	.31	.27	.25
10.0	.39	.31	.25	.38	.30	.25	.37	.30	.25	.36	.29	.25	.35	.29	.25	.23



C Range: 0 - 360DEG  
 C Interval: 15.0DEG  
 Test Speed: HIGH  
 Temperature:25.3°C  
 Operators:DAMIN  
 Test Date:2023-05-19

□ Range: 0 - 180DEG  
 □ Interval: 1.0DEG  
 Test System:EVERFINE GO-2000B\_V1 SYSTEM V2.00.471  
 Humidity:65.0%  
 Test Distance:4.880m [K=1.0000]  
 Remarks:

**WEC AND CCEC**

□cc	80%			70%			50%			30%			10%			0
□w	50%	30%	10%	50%	30%	10%	50%	30%	10%	50%	30%	10%	50%	30%	10%	0
□fc	20%			20%			20%			20%			20%			0
RCR	RCR:Room Cavity Ratio						Wall Exitance Coefficients(WEC)									
0.0	.318	.181	.057	.310	.177	.056	.295	.169	.054	.281	.162	.052	.268	.156	.050	
1.0	.296	.162	.050	.289	.159	.049	.276	.153	.048	.264	.148	.046	.252	.143	.045	
2.0	.273	.145	.044	.267	.143	.043	.255	.138	.042	.244	.134	.041	.234	.129	.040	
3.0	.251	.131	.038	.246	.129	.038	.235	.125	.037	.225	.121	.036	.216	.117	.036	
4.0	.232	.118	.034	.227	.116	.034	.217	.113	.033	.209	.110	.033	.200	.107	.032	
5.0	.215	.108	.031	.210	.106	.031	.202	.103	.030	.194	.101	.030	.186	.098	.029	
6.0	.200	.099	.028	.196	.097	.028	.188	.095	.027	.181	.093	.027	.174	.090	.027	
7.0	.186	.091	.026	.183	.090	.025	.176	.088	.025	.169	.086	.025	.163	.084	.024	
8.0	.174	.084	.024	.171	.083	.023	.165	.082	.023	.159	.080	.023	.154	.078	.023	
9.0	.164	.079	.022	.161	.078	.022	.155	.076	.021	.150	.074	.021	.145	.073	.021	
10.0	.164	.079	.022	.161	.078	.022	.155	.076	.021	.150	.074	.021	.145	.073	.021	

□cc	80%			70%			50%			30%			10%			0
□w	50%	30%	10%	50%	30%	10%	50%	30%	10%	50%	30%	10%	50%	30%	10%	0
□fc	20%			20%			20%			20%			20%			0
RCR	RCR:Room Cavity Ratio						Ceiling Cavity Exitance Coefficients(CCEC)									
0.0	.213	.213	.213	.182	.182	.182	.124	.124	.124	.071	.071	.071	.023	.023	.023	
1.0	.204	.179	.157	.174	.154	.135	.119	.106	.093	.069	.061	.054	.022	.020	.018	
2.0	.196	.155	.121	.168	.133	.104	.115	.092	.073	.066	.054	.043	.021	.017	.014	
3.0	.188	.138	.097	.161	.119	.084	.111	.082	.059	.064	.048	.035	.021	.016	.011	
4.0	.181	.124	.081	.155	.107	.071	.107	.075	.050	.062	.044	.029	.020	.014	.010	
5.0	.173	.114	.070	.149	.099	.061	.102	.069	.043	.059	.040	.026	.019	.013	.008	
6.0	.166	.106	.062	.143	.092	.054	.098	.064	.038	.057	.038	.023	.018	.012	.008	
7.0	.159	.099	.057	.137	.086	.049	.095	.060	.035	.055	.035	.021	.018	.012	.007	
8.0	.153	.093	.052	.131	.081	.045	.091	.057	.032	.053	.033	.019	.017	.011	.006	
9.0	.147	.088	.049	.126	.077	.043	.088	.054	.030	.051	.032	.018	.017	.010	.006	
10.0	.141	.084	.046	.121	.073	.040	.084	.051	.029	.049	.030	.017	.016	.010	.006	

C Range: 0 - 360DEG  
 C Interval: 15.0DEG  
 Test Speed: HIGH  
 Temperature:25.3°C  
 Operators:DAMIN  
 Test Date:2023-05-19

□ Range: 0 - 180DEG  
 □ Interval: 1.0DEG  
 Test System:EVERFINE GO-2000B\_V1 SYSTEM V2.00.471  
 Humidity:65.0%  
 Test Distance:4.880m [K=1.0000]  
 Remarks:

**UGR(Unified Glare Rating) Table**

ceiling/cavity	0.7	0.7	0.5	0.5	0.3	0.7	0.7	0.5	0.5	0.3
walls	0.5	0.3	0.5	0.3	0.3	0.5	0.3	0.5	0.3	0.3
working plane	0.2	0.2	0.2	0.2	0.2	0.2	0.2	0.2	0.2	0.2
Room dimensions	Viewed crosswise					Viewed endwise				
x = 2H y = 2H	23.0	24.5	23.3	24.8	25.0	23.1	24.6	23.4	24.8	25.1
3H	24.6	25.9	24.9	26.2	26.5	24.7	26.1	25.1	26.4	26.7
4H	25.2	26.5	25.5	26.8	27.1	25.4	26.7	25.8	27.0	27.4
6H	25.6	26.9	26.0	27.2	27.5	26.0	27.2	26.4	27.5	27.9
8H	25.8	27.0	26.2	27.3	27.7	26.2	27.4	26.6	27.7	28.1
12H	25.9	27.0	26.3	27.4	27.7	26.4	27.5	26.8	27.9	28.2
4H 2H	23.7	25.0	24.0	25.3	25.6	23.7	25.0	24.1	25.3	25.6
3H	25.4	26.5	25.8	26.9	27.3	25.5	26.7	25.9	27.0	27.4
4H	26.1	27.2	26.6	27.6	28.0	26.4	27.4	26.8	27.8	28.2
6H	26.7	27.7	27.2	28.1	28.5	27.1	28.0	27.5	28.4	28.9
8H	26.9	27.8	27.4	28.2	28.7	27.4	28.2	27.8	28.7	29.1
12H	27.1	27.9	27.5	28.3	28.8	27.6	28.4	28.1	28.9	29.3
8H 4H	26.5	27.3	26.9	27.7	28.2	26.7	27.5	27.1	28.0	28.4
6H	27.2	27.9	27.7	28.4	28.9	27.5	28.3	28.0	28.7	29.2
8H	27.5	28.1	28.0	28.6	29.1	27.9	28.6	28.4	29.1	29.6
12H	27.7	28.3	28.3	28.8	29.3	28.3	28.9	28.8	29.4	29.9
12H 4H	26.5	27.3	27.0	27.7	28.2	26.7	27.5	27.2	27.9	28.4
6H	27.3	27.9	27.8	28.4	28.9	27.6	28.3	28.1	28.7	29.2
8H	27.6	28.2	28.1	28.7	29.2	28.0	28.6	28.6	29.1	29.6
Variations with the observer position at spacings(CIE Pub.117):										
S = 1.0H	+ 0.1 / - 0.2					+ 0.1 / - 0.2				
1.5H	+ 0.2 / - 0.3					+ 0.2 / - 0.3				
2.0H	+ 0.2 / - 0.4					+ 0.1 / - 0.4				

CIE Pub.117, 300.1 lm Total Lamp Luminous Flux Correct (8log(F/F0) = -4.2)  
 Area: 0.016 m2

C Range: 0 - 360DEG  
 C Interval: 15.0DEG  
 Test Speed: HIGH  
 Temperature:25.3°C  
 Operators:DAMIN  
 Test Date:2023-05-19

Range: 0 - 180DEG  
 Interval: 1.0DEG  
 Test System:EVERFINE GO-2000B\_V1 SYSTEM V2.00.471  
 Humidity:65.0%  
 Test Distance:4.880m [K=1.0000]  
 Remarks:

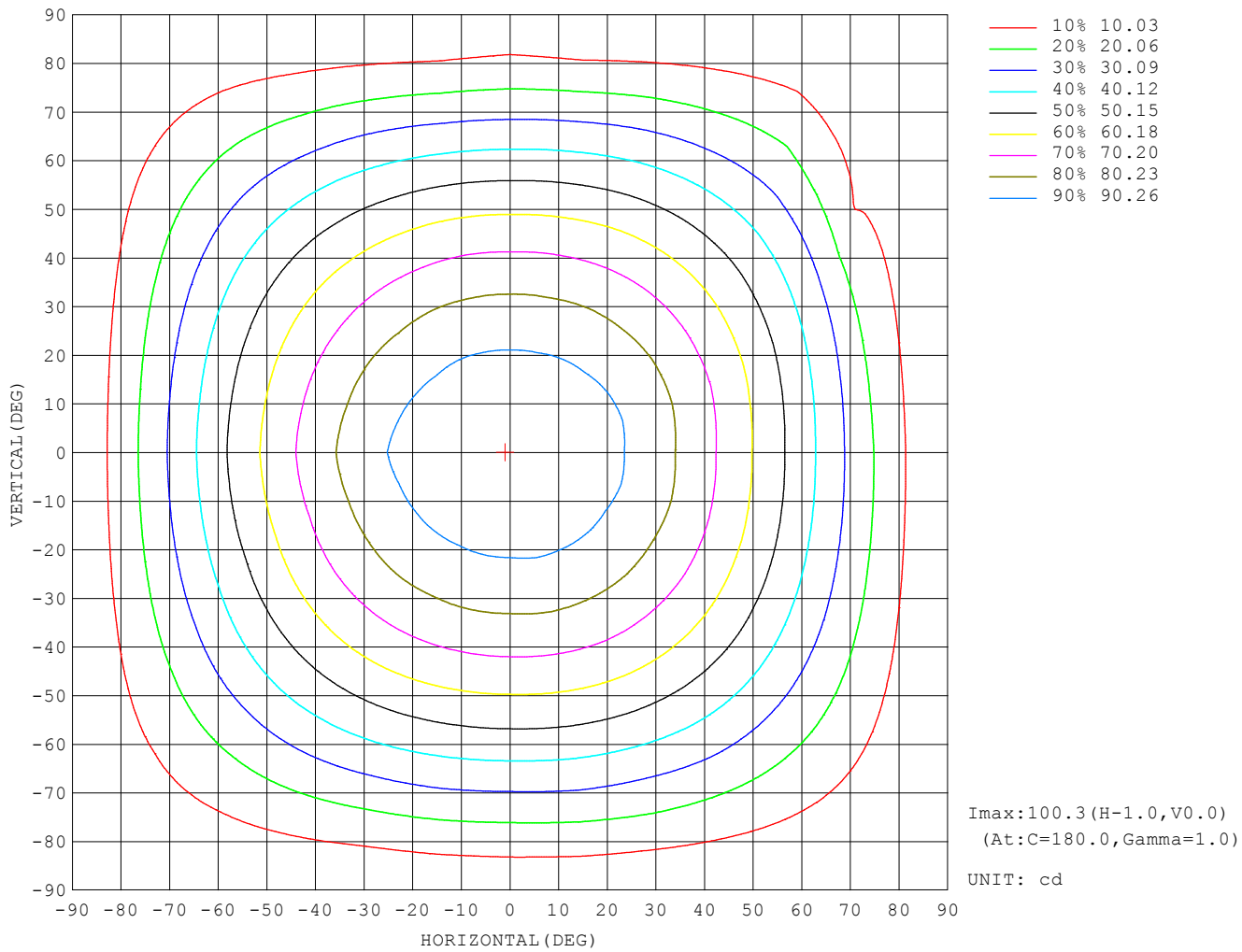
**UTILIZATION FACTORS TABLE**

REFLECTANCE										
Ceiling	0.8	0.8	0.8	0.7	0.7	0.7	0.5	0.5	0.5	0
Walls	0.7	0.5	0.3	0.7	0.5	0.3	0.7	0.5	0.3	0
Working plane	0.2	0.2	0.2	0.2	0.2	0.2	0.2	0.2	0.2	0
ROOM INDEX	UTILIZATION FACTORS (PERCENT) $k(RI) \times RCR = 5$									
$k = 0.60$	56	44	37	55	44	37	54	43	37	30
0.80	66	54	47	65	54	46	63	53	46	39
1.00	74	63	55	73	62	55	70	63	54	47
1.25	81	71	63	80	70	63	77	68	62	54
1.50	86	76	69	85	75	68	81	73	67	59
2.00	93	84	78	91	83	77	87	81	75	67
2.50	97	89	83	95	88	82	91	85	80	71
3.00	101	94	88	98	92	87	94	89	84	75
4.00	105	99	94	102	97	92	98	93	89	80
5.00	107	102	98	105	100	96	100	96	93	83
ROOM INDEX	UF(total)									Direct
According to DIN EN 13032-2 2004			Suspended				SHRNOM = 1.25			

C Range: 0 - 360DEG  
 C Interval: 15.0DEG  
 Test Speed: HIGH  
 Temperature: 25.3°C  
 Operators: DAMIN  
 Test Date: 2023-05-19

Range: 0 - 180DEG  
 Interval: 1.0DEG  
 Test System: EVERFINE GO-2000B\_V1 SYSTEM V2.00.471  
 Humidity: 65.0%  
 Test Distance: 4.880m [K=1.0000]  
 Remarks:

**ISOCANDELA DIAGRAM**

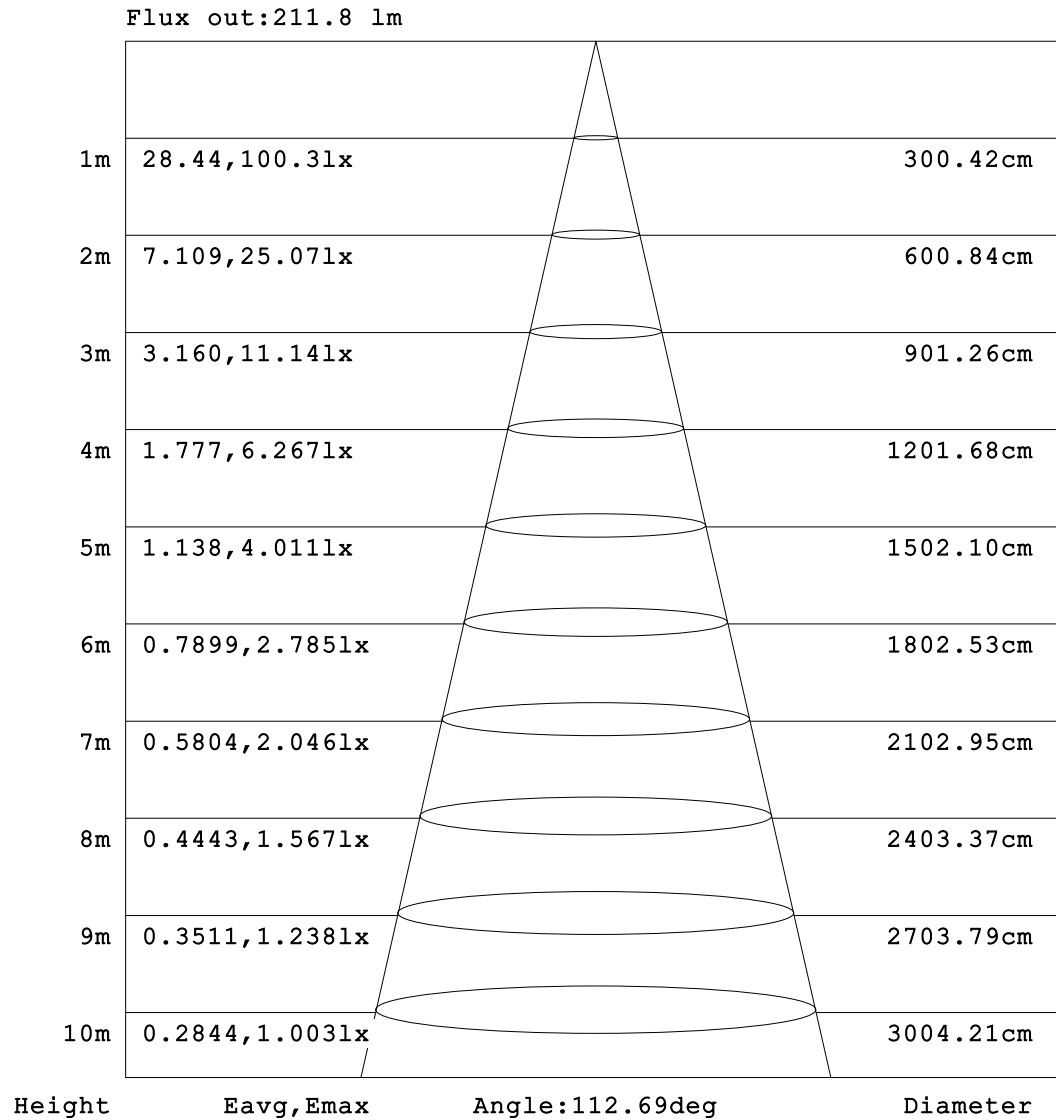


C Range: 0 - 360DEG  
 C Interval: 15.0DEG  
 Test Speed: HIGH  
 Temperature: 25.3°C  
 Operators: DAMIN  
 Test Date: 2023-05-19

Range: 0 - 180DEG  
 Interval: 1.0DEG  
 Test System: EVERFINE GO-2000B\_V1 SYSTEM V2.00.471  
 Humidity: 65.0%  
 Test Distance: 4.880m [K=1.0000]  
 Remarks:



**AAI Figure**

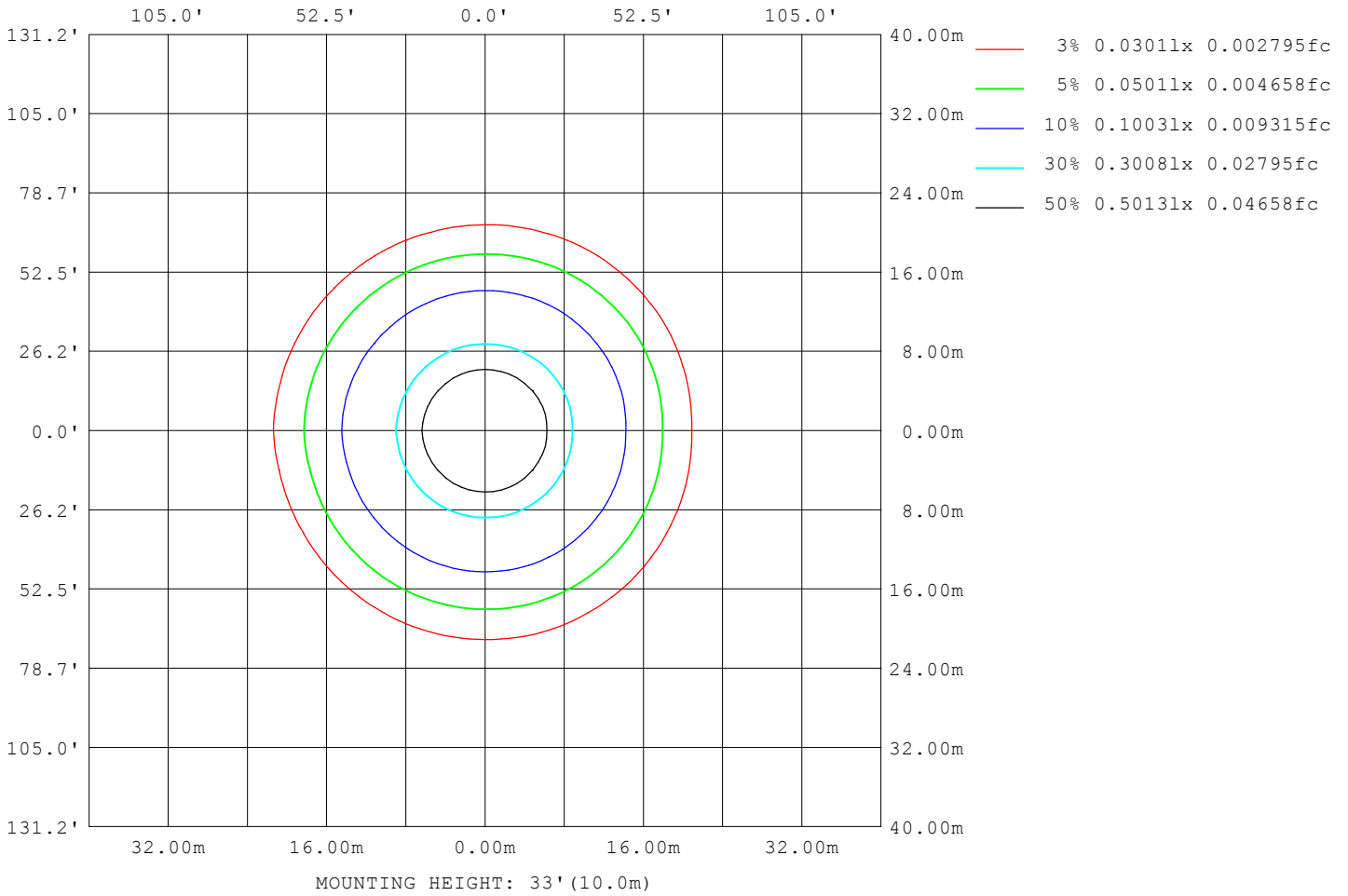


**Note:**The Curves indicate the illuminated area and the average illumination when the luminaire is at different distance.

C Range: 0 - 360DEG  
 C Interval: 15.0DEG  
 Test Speed: HIGH  
 Temperature:25.3°C  
 Operators:DAMIN  
 Test Date:2023-05-19

Range: 0 - 180DEG  
 Interval: 1.0DEG  
 Test System:EVERFINE GO-2000B\_V1 SYSTEM V2.00.471  
 Humidity:65.0%  
 Test Distance:4.880m [K=1.0000]  
 Remarks:

**ISOLUX DIAGRAM**



C Range: 0 - 360DEG  
 C Interval: 15.0DEG  
 Test Speed: HIGH  
 Temperature: 25.3°C  
 Operators: DAMIN  
 Test Date: 2023-05-19

Range: 0 - 180DEG  
 Interval: 1.0DEG  
 Test System: EVERFINE GO-2000B\_V1 SYSTEM V2.00.471  
 Humidity: 65.0%  
 Test Distance: 4.880m [K=1.0000]  
 Remarks:

LED Avg.L Report

NAME: LED Strip	TYPE: Indoor lighting	WEIGHT: 75g
SPEC.: NEON LED	DIM.: 500*16*16MM	SERIAL No.: 20230518003
MFR.: EVERFINE	SUR.: 500*16MM	Shielding Angle:

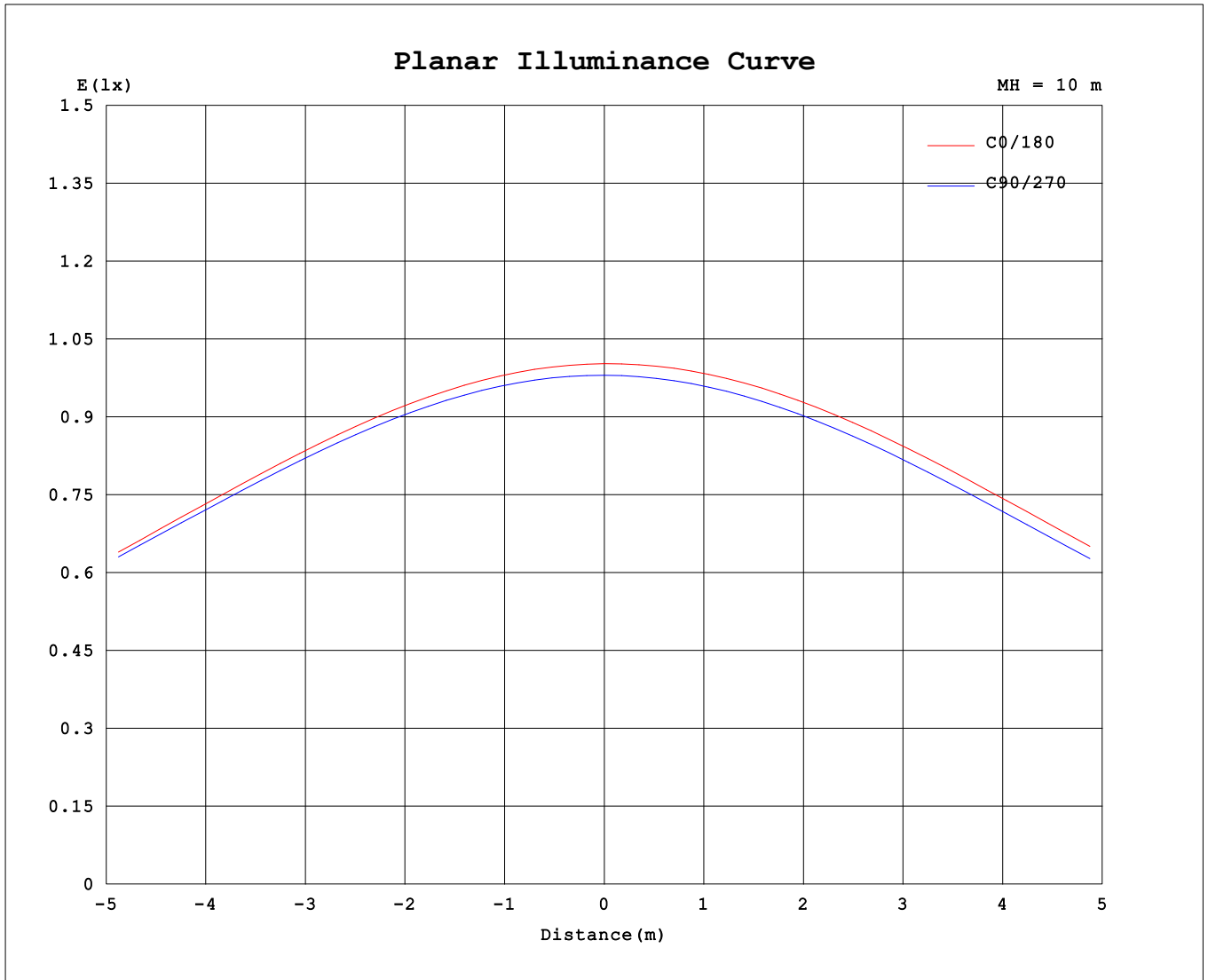
AvgL	cd/m2
L_0~180 (65) av	5595
L_0~180 (75) av	5101
L_0~180 (85) av	4682
L_90~270 (65) av	5422
L_90~270 (75) av	5009
L_90~270 (85) av	5128
L_45 (65) av	5517
L_45 (75) av	5017
L_45 (85) av	4351

Standard: GB/T 29293-2012

C Range: 0 - 360DEG  
 C Interval: 15.0DEG  
 Test Speed: HIGH  
 Temperature:25.3℃  
 Operators:DAMIN  
 Test Date:2023-05-19

Range: 0 - 180DEG  
 Interval: 1.0DEG  
 Test System:EVERFINE GO-2000B\_V1 SYSTEM V2.00.471  
 Humidity:65.0%  
 Test Distance:4.880m [K=1.0000]  
 Remarks:

**Planar Illuminance Curve**



C Range: 0 - 360DEG  
 C Interval: 15.0DEG  
 Test Speed: HIGH  
 Temperature: 25.3°C  
 Operators: DAMIN  
 Test Date: 2023-05-19

Range: 0 - 180DEG  
 Interval: 1.0DEG  
 Test System: EVERFINE GO-2000B\_V1 SYSTEM V2.00.471  
 Humidity: 65.0%  
 Test Distance: 4.880m [K=1.0000]  
 Remarks:

LUMINOUS DISTRIBUTION INTENSITY DATA

Table--1

UNIT: cd

C (DEG) \ □ (DEG)	0	15	30	45	60	75	90	105	120	135	150	165	180	195	210	225	240	255	270
0	100	99.8	98.8	98.5	98.4	98.3	98.1	98.1	98.2	98.5	99.1	99.8	100	99.8	98.8	98.5	98.4	98.3	98.1
5	99.7	99.3	98.5	98.2	98.1	98.0	97.7	97.7	97.8	98.1	98.7	99.4	100	99.3	98.4	98.0	97.9	97.7	97.5
10	98.3	98.1	97.2	97.0	96.9	96.8	96.4	96.4	96.5	96.8	97.4	98.1	98.9	98.1	97.1	96.6	96.6	96.4	96.2
15	96.0	95.9	95.2	95.0	94.8	94.7	94.3	94.3	94.4	94.7	95.3	95.9	96.9	95.9	95.0	94.5	94.4	94.2	94.0
20	92.9	93.0	92.3	92.2	92.0	91.8	91.4	91.4	91.5	91.8	92.3	92.9	94.1	93.0	92.1	91.5	91.4	91.1	91.0
25	89.0	89.2	88.7	88.6	88.4	88.2	87.7	87.8	87.8	88.2	88.6	89.2	90.5	89.3	88.5	87.8	87.6	87.3	87.2
30	84.4	84.8	84.3	84.3	84.0	83.9	83.3	83.4	83.4	83.9	84.2	84.8	86.1	84.9	84.1	83.3	83.1	82.8	82.7
35	79.1	79.6	79.3	79.3	79.0	78.9	78.3	78.4	78.4	78.9	79.1	79.7	81.1	79.9	79.1	78.2	78.0	77.7	77.6
40	73.2	73.7	73.6	73.6	73.5	73.2	72.7	72.6	72.7	73.2	73.4	73.9	75.5	74.2	73.4	72.5	72.0	71.9	71.6
45	66.7	67.2	67.4	67.3	67.3	67.0	66.5	66.4	66.6	66.8	67.1	67.5	69.0	68.0	67.1	66.3	65.7	65.6	65.4
50	59.8	60.4	60.6	60.7	60.7	60.3	59.9	59.8	59.9	60.1	60.4	60.8	62.2	61.3	60.4	59.6	59.0	58.8	58.6
55	52.4	53.0	53.4	53.5	53.6	53.3	52.8	52.8	52.9	53.0	53.2	53.5	55.0	54.1	53.2	52.4	51.8	51.5	51.4
60	44.6	45.3	45.7	46.0	46.0	45.9	45.4	45.4	45.4	45.4	45.6	45.9	47.3	46.5	45.6	44.8	44.1	43.8	43.7
65	36.4	37.1	37.5	37.9	38.0	38.1	37.6	37.6	37.4	37.4	37.4	37.8	39.3	38.4	37.7	36.6	36.2	35.6	35.7
70	28.0	28.8	29.1	29.8	29.8	30.3	29.7	29.7	29.2	29.3	29.2	29.6	30.9	30.1	29.4	28.4	27.9	27.3	27.5
75	19.8	20.5	20.8	21.4	22.2	22.3	21.8	21.7	21.0	21.0	20.8	21.2	22.5	21.7	21.1	20.0	19.5	19.0	19.6
80	12.0	12.6	12.9	13.4	14.2	14.6	14.4	14.0	13.2	13.1	12.9	13.1	14.3	13.6	13.0	12.0	11.5	11.2	12.3
85	5.85	6.27	6.40	6.75	7.20	7.92	7.89	7.40	6.50	6.40	6.22	6.44	7.21	6.62	6.12	5.27	4.84	4.55	6.41
90	2.81	2.89	2.92	3.02	3.32	3.86	3.85	3.50	2.86	2.62	2.39	2.36	2.59	2.27	2.00	1.56	1.26	1.06	1.89
95	2.62	2.61	2.61	2.57	2.80	3.24	0.42	2.79	2.33	2.07	1.89	1.75	1.61	1.57	1.42	1.21	0.93	0.68	0.39
100	2.54	2.52	2.51	2.44	2.59	2.81	0.41	1.54	2.04	1.96	1.81	1.67	1.56	1.53	1.39	1.19	0.90	0.61	0.39
105	2.46	2.43	2.42	2.33	2.43	2.09	0.43	0.93	1.59	1.78	1.73	1.61	1.54	1.52	1.39	1.18	0.90	0.59	0.44
110	2.38	2.34	2.32	2.23	2.15	1.51	0.45	0.68	1.27	1.55	1.62	1.54	1.52	1.50	1.37	1.16	0.90	0.61	0.50
115	2.29	2.24	2.23	2.09	1.86	1.18	0.51	0.65	1.07	1.37	1.49	1.47	1.49	1.46	1.33	1.15	0.90	0.64	0.56
120	2.20	2.14	2.12	1.94	1.63	1.04	0.57	0.67	0.96	1.24	1.39	1.40	1.45	1.43	1.30	1.14	0.91	0.68	0.62
125	2.10	2.04	1.97	1.77	1.46	0.95	0.63	0.69	0.92	1.16	1.32	1.35	1.41	1.39	1.27	1.12	0.92	0.72	0.68
130	2.00	1.93	1.80	1.63	1.33	0.88	0.70	0.73	0.91	1.11	1.26	1.31	1.38	1.36	1.25	1.11	0.94	0.77	0.74
135	1.89	1.82	1.69	1.48	1.23	0.88	0.75	0.77	0.92	1.08	1.22	1.27	1.34	1.32	1.23	1.11	0.95	0.79	0.80
140	1.79	1.70	1.56	1.35	1.15	0.88	0.81	0.82	0.93	1.07	1.19	1.24	1.30	1.29	1.20	1.10	0.96	0.84	0.85
145	1.68	1.55	1.40	1.25	1.07	0.91	0.87	0.88	0.93	1.07	1.17	1.21	1.26	1.25	1.18	1.09	0.96	0.89	0.91
150	1.57	1.45	1.29	1.18	1.05	0.94	0.93	0.93	0.95	1.04	1.15	1.18	1.21	1.22	1.15	1.07	0.99	0.94	0.96
155	1.44	1.31	1.21	1.12	1.05	0.99	0.97	0.99	0.97	1.03	1.11	1.14	1.17	1.16	1.11	1.05	1.00	0.99	1.00
160	1.33	1.18	1.16	1.10	1.05	1.03	1.02	1.03	1.02	1.04	1.09	1.09	1.11	1.12	1.09	1.05	1.04	1.04	1.05
165	1.17	1.15	1.13	1.11	1.07	1.08	1.07	1.08	1.07	1.08	1.07	1.09	1.11	1.11	1.08	1.07	1.08	1.08	1.09
170	1.16	1.14	1.13	1.12	1.11	1.12	1.11	1.12	1.11	1.12	1.11	1.14	1.13	1.11	1.12	1.11	1.12	1.11	1.12
175	1.15	1.16	1.14	1.15	1.14	1.15	1.14	1.15	1.14	1.15	1.15	1.22	1.16	1.14	1.15	1.14	1.15	1.14	1.15
180	1.17	1.17	1.16	1.16	1.16	1.16	1.16	1.16	1.17	1.17	1.17	1.23	1.17	1.17	1.17	1.16	1.16	1.16	1.16

C Range: 0 - 360DEG  
 C Interval: 15.0DEG  
 Test Speed: HIGH  
 Temperature:25.3°C  
 Operators:DAMIN  
 Test Date:2023-05-19

□ Range: 0 - 180DEG  
 □ Interval: 1.0DEG  
 Test System:EVERFINE GO-2000B\_V1 SYSTEM V2.00.471  
 Humidity:65.0%  
 Test Distance:4.880m [K=1.0000]  
 Remarks:

LUMINOUS DISTRIBUTION INTENSITY DATA

Table--2

UNIT: cd

C (DEG) □ (DEG)	285	300	315	330	345														
0	98.1	98.2	98.5	99.1	99.8														
5	97.5	97.8	98.1	98.7	99.4														
10	96.2	96.5	96.8	97.6	98.2														
15	94.1	94.4	94.8	95.5	96.1														
20	91.1	91.5	91.9	92.7	93.2														
25	87.3	87.9	88.3	89.0	89.5														
30	82.9	83.5	83.9	84.7	85.0														
35	77.8	78.5	78.9	79.6	79.8														
40	72.1	72.7	73.3	73.8	74.1														
45	65.8	66.5	67.1	67.5	67.7														
50	59.1	59.8	60.3	60.7	60.8														
55	51.9	52.6	53.1	53.5	53.4														
60	44.3	45.0	45.4	45.8	45.5														
65	36.1	37.0	37.3	37.8	37.0														
70	27.8	28.6	29.0	29.4	26.7														
75	19.5	20.2	20.6	21.1	15.7														
80	11.5	12.2	12.6	13.1	8.69														
85	4.74	5.41	5.86	5.07	4.32														
90	1.15	1.35	1.68	1.67	2.67														
95	0.78	1.32	1.82	2.19	2.50														
100	0.77	1.24	1.68	2.16	2.45														
105	0.77	1.28	1.71	2.02	2.40														
110	0.79	1.27	1.70	2.04	2.28														
115	0.81	1.26	1.68	2.00	2.19														
120	0.83	1.21	1.62	1.95	2.14														
125	0.86	1.21	1.57	1.87	2.09														
130	0.87	1.18	1.44	1.80	2.00														
135	0.88	1.14	1.38	1.66	1.91														
140	0.91	1.11	1.34	1.60	1.83														
145	0.93	1.09	1.27	1.43	1.74														
150	0.95	1.07	1.21	1.33	1.64														
155	0.99	1.07	1.15	1.24	1.45														
160	1.03	1.08	1.13	1.17	1.30														
165	1.07	1.09	1.13	1.15	1.24														
170	1.11	1.12	1.12	1.14	1.22														
175	1.14	1.15	1.14	1.16	1.22														
180	1.16	1.16	1.17	1.17	1.25														

C Range: 0 - 360DEG  
 C Interval: 15.0DEG  
 Test Speed: HIGH  
 Temperature:25.3°C  
 Operators:DAMIN  
 Test Date:2023-05-19

□ Range: 0 - 180DEG  
 □ Interval: 1.0DEG  
 Test System:EVERFINE GO-2000B\_V1 SYSTEM V2.00.471  
 Humidity:65.0%  
 Test Distance:4.880m [K=1.0000]  
 Remarks: