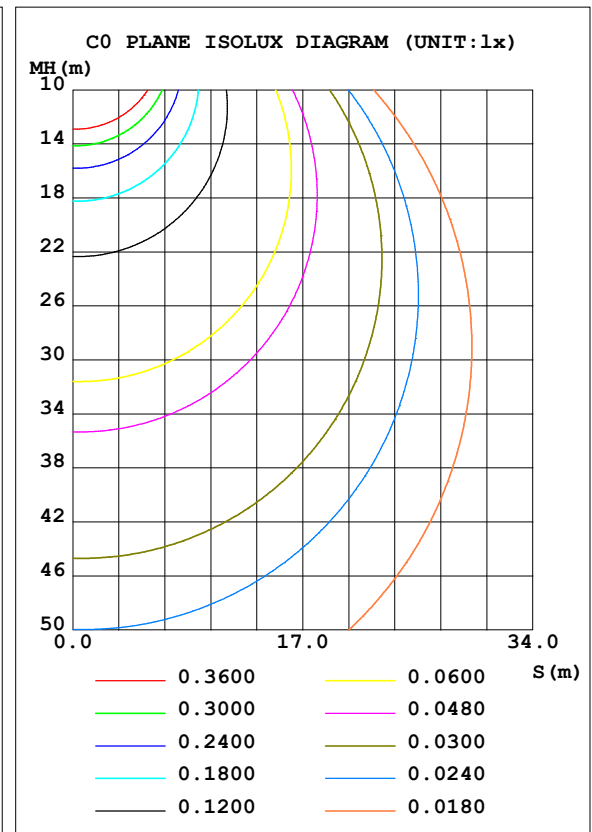
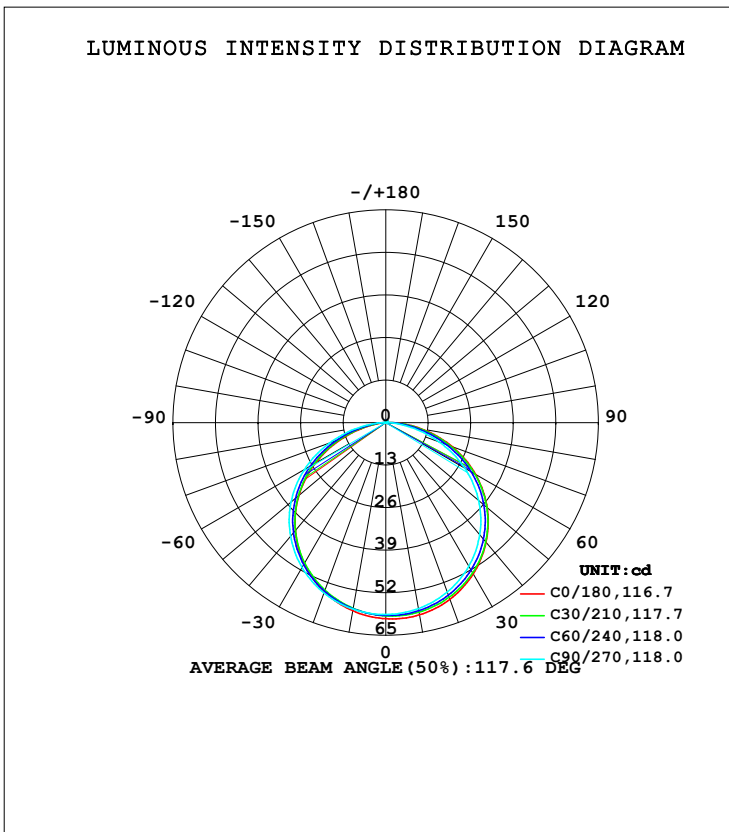


LUMINAIRE PHOTOMETRIC TEST REPORT

NAME: LED Strip	TYPE: Indoor lighting	WEIGHT: 20g
SPEC.: 2835 084LED	DIM.: 500*12*1.2mm	SERIAL No.: 20211123001
MFR.: EVERFINE	SUR.: 500*12*1.2mm	Shielding Angle:

DATA OF LAMP		PHOTOMETRIC DATA			
W-FLS102T23W084B-48(WCP)-60M-HR-TR-EP		Imax (cd)	60.01	S/MH (C0/180)	1.24
NOMINAL POWER (W)	2.03833	LOR (%)	100.0	S/MH (C90/270)	1.30
RATED VOLTAGE (V)	DC 48	TOTAL FLUX (lm)	180.50	<input type="checkbox"/> UP, DN (C0-180)	0.7, 49.6
NOMINAL FLUX (lm)	180.497	CIE CLASS	DIRECT	<input type="checkbox"/> UP, DN (C180-360)	0.7, 49.0
LAMPS INSIDE	1	<input type="checkbox"/> up (%)	1.4	CIBSE SHR NOM	1.25
TEST VOLTAGE (V)	DC 48	<input type="checkbox"/> down (%)	98.6	CIBSE SHR MAX	1.35



C Range: 0 - 360DEG
 C Interval: 15.0DEG
 Test Speed: HIGH
 Temperature: 25.3DEG
 Operators: DAMIN
 Test Date: 2021-11-29

Range: 0 - 180DEG
 Interval: 1.0DEG
 Test System: EVERFINE GO-2000A_V1 SYSTEM V2.00.444
 Humidity: 65.0%
 Test Distance: 4.940m [K=1.0000]
 Remarks:

ZONAL FLUX DIAGRAM

ZONAL FLUX DIAGRAM:

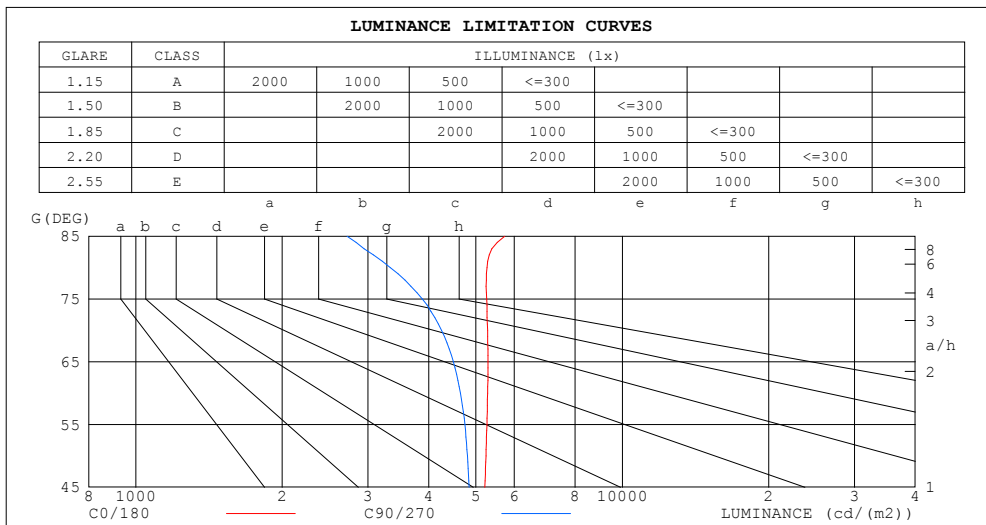
mm	C0	C45	C90	C135	C180	C225	C270	C315	mm	□ zone	□ total	%lum, lamp
10	59.60	58.56	57.69	57.52	58.36	57.54	57.85	58.59	0- 10	5.599	5.599	3.1,3.1
20	57.42	56.46	55.04	54.41	54.99	54.47	55.36	56.55	10- 20	16.13	21.73	12,12
30	53.43	52.65	50.70	49.57	49.84	49.72	51.15	52.77	20- 30	24.73	46.46	25.7,25.7
40	47.72	47.15	44.69	43.04	43.03	43.30	45.31	47.29	30- 40	30.29	76.75	42.5,42.5
50	40.45	39.96	37.06	34.90	34.65	35.29	37.82	40.14	40- 50	32.02	108.8	60.3,60.3
60	31.73	31.06	27.90	25.23	24.85	25.81	28.74	31.35	50- 60	29.51	138.3	76.6,76.6
70	21.69	20.69	17.45	14.53	14.07	15.25	18.36	20.71	60- 70	22.84	161.1	89.3,89.3
80	10.98	9.904	6.957	4.605	4.088	5.113	7.710	9.717	70- 80	12.97	174.1	96.5,96.5
90	2.054	1.612	0.5421	0.3148	0.2375	0.2706	0.7519	1.840	80- 90	3.829	177.9	98.6,98.6
100	0.2297	0.2066	0.2201	0.2424	0.2378	0.2268	0.2193	0.2170	90-100	0.4189	178.3	98.8,98.8
110	0.2342	0.2574	0.2746	0.3001	0.3117	0.2942	0.2909	0.2607	100-110	0.2740	178.6	99,99
120	0.3058	0.3290	0.3496	0.3682	0.3832	0.3658	0.3659	0.3346	110-120	0.3197	178.9	99.1,99.1
130	0.3774	0.4029	0.4200	0.4409	0.4513	0.4350	0.4364	0.4050	120-130	0.3496	179.3	99.3,99.3
140	0.4488	0.4744	0.4904	0.5113	0.5137	0.5042	0.5033	0.4754	130-140	0.3556	179.6	99.5,99.5
150	0.5216	0.5448	0.5528	0.5737	0.5702	0.5586	0.5656	0.5470	140-150	0.3308	180.0	99.7,99.7
160	0.5885	0.6048	0.6059	0.6302	0.6267	0.6139	0.6187	0.6059	150-160	0.2725	180.2	99.9,99.9
170	0.6555	0.6579	0.6521	0.6775	0.6741	0.6532	0.6625	0.6578	160-170	0.1822	180.4	100,100
180	0.6913	0.6786	0.6798	0.6925	0.6913	0.6786	0.6809	0.6936	170-180	0.0652	180.5	100,100
DEG	LUMINOUS INTENSITY:cd									UNIT:lm		

C Range: 0 - 360DEG
 C Interval: 15.0DEG
 Test Speed: HIGH
 Temperature:25.3DEG
 Operators:DAMIN
 Test Date:2021-11-29

□ Range: 0 - 180DEG
 □ Interval: 1.0DEG
 Test System:EVERFINE GO-2000A_V1 SYSTEM V2.00.444
 Humidity:65.0%
 Test Distance:4.940m [K=1.0000]
 Remarks:

LUMINANCE LIMITATION CURVES

NAME: LED Strip	TYPE: Indoor lighting	WEIGHT: 20g
SPEC.: 2835 084LED	DIM.: 500*12*1.2mm	SERIAL No.: 20211123001
MFR.: EVERFINE	SUR.: 500*12*1.2mm	Shielding Angle:



LUMINANCE cd/(m2)		
G (DEG)	C0/180	C90/270
85	5732	2719
80	5268	3339
75	5262	3880
70	5284	4251
65	5295	4496
60	5289	4650
55	5269	4747
50	5244	4805
45	5219	4841

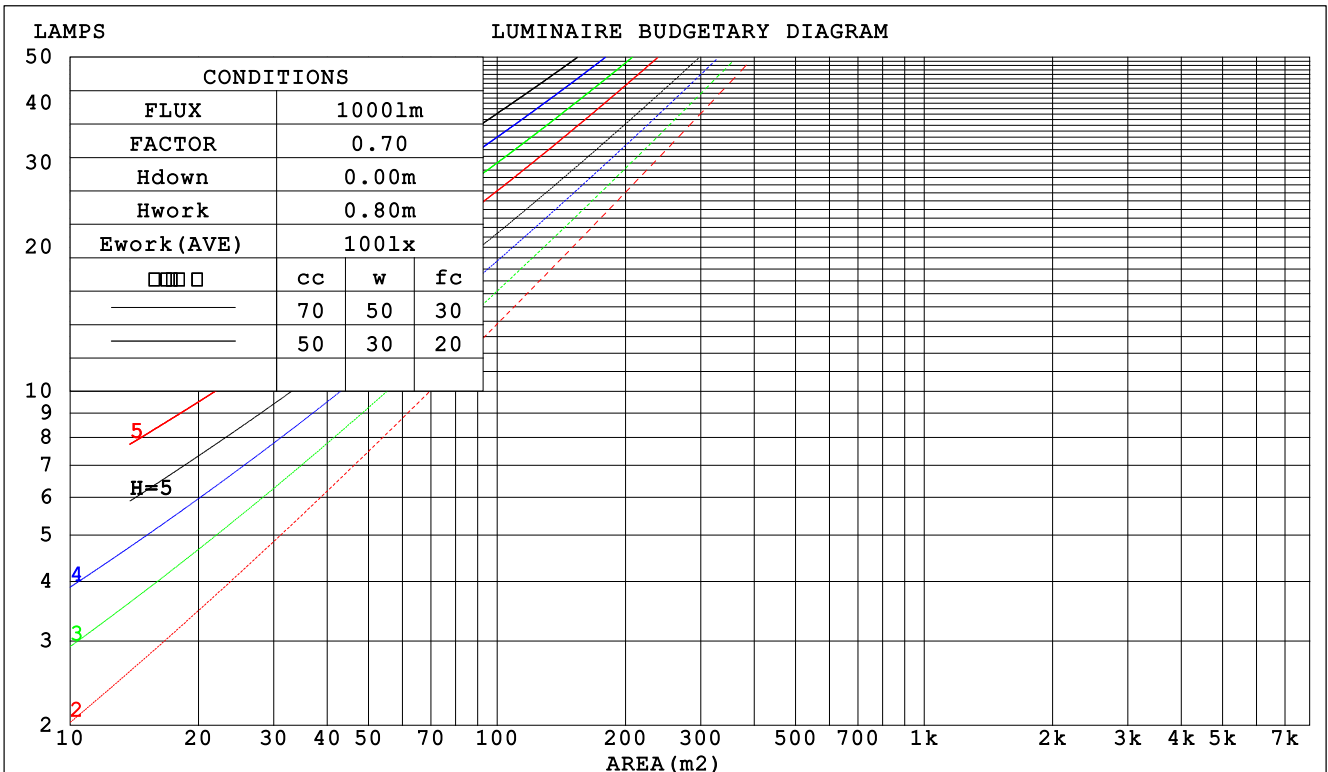
C Range: 0 - 360DEG
 C Interval: 15.0DEG
 Test Speed: HIGH
 Temperature: 25.3DEG
 Operators: DAMIN
 Test Date: 2021-11-29

Range: 0 - 180DEG
 Interval: 1.0DEG
 Test System: EVERFINE GO-2000A_V1 SYSTEM V2.00.444
 Humidity: 65.0%
 Test Distance: 4.940m [K=1.0000]
 Remarks:

CU AND LUMINAIRE BUDGETARY ESTIMATE DIAGRAM

NAME: LED Strip	TYPE: Indoor lighting	WEIGHT: 20g
SPEC.: 2835 084LED	DIM.: 500*12*1.2mm	SERIAL No.: 20211123001
MFR.: EVERFINE	SUR.: 500*12*1.2mm	Shielding Angle:

□cc	80%			70%			50%			30%			10%			0
□w	50%	30%	10%	50%	30%	10%	50%	30%	10%	50%	30%	10%	50%	30%	10%	0
□fc	20%			20%			20%			20%			20%			0
RCR	RCR:Room Cavity Ratio						Coefficients of Utilization(CU)									
0.0	1.19	1.19	1.19	1.16	1.16	1.16	1.10	1.10	1.10	1.05	1.05	1.05	1.01	1.01	1.01	.99
1.0	1.03	.99	.95	1.01	.97	.93	.96	.93	.90	.92	.89	.87	.88	.86	.84	.82
2.0	.90	.83	.77	.88	.81	.76	.84	.78	.74	.80	.76	.72	.77	.73	.70	.68
3.0	.78	.70	.64	.77	.69	.63	.74	.67	.62	.71	.65	.60	.68	.63	.59	.57
4.0	.69	.60	.54	.68	.60	.53	.65	.58	.52	.63	.56	.51	.60	.55	.50	.48
5.0	.62	.53	.46	.61	.52	.46	.58	.51	.45	.56	.50	.44	.54	.48	.44	.42
6.0	.56	.46	.40	.55	.46	.40	.53	.45	.39	.51	.44	.39	.49	.43	.38	.36
7.0	.50	.41	.35	.49	.41	.35	.48	.40	.35	.46	.39	.34	.45	.39	.34	.32
8.0	.46	.37	.31	.45	.37	.31	.44	.36	.31	.42	.35	.31	.41	.35	.30	.28
9.0	.42	.34	.28	.41	.33	.28	.40	.33	.28	.39	.32	.28	.38	.32	.27	.25
10.0	.39	.31	.25	.38	.30	.25	.37	.30	.25	.36	.30	.25	.35	.29	.25	.23



C Range: 0 - 360DEG
 C Interval: 15.0DEG
 Test Speed: HIGH
 Temperature: 25.3DEG
 Operators: DAMIN
 Test Date: 2021-11-29

□ Range: 0 - 180DEG
 □ Interval: 1.0DEG
 Test System: EVERFINE GO-2000A_V1 SYSTEM V2.00.444
 Humidity: 65.0%
 Test Distance: 4.940m [K=1.0000]
 Remarks:

WEC AND CCEC

NAME: LED Strip	TYPE: Indoor lighting	WEIGHT: 20g
SPEC.: 2835 084LED	DIM.: 500*12*1.2mm	SERIAL No.: 20211123001
MFR.: EVERFINE	SUR.: 500*12*1.2mm	Shielding Angle:

<input type="checkbox"/> cc	80%	70%	50%	30%	10%	0
<input type="checkbox"/> w	50% 30% 10%	50% 30% 10%	50% 30% 10%	50% 30% 10%	50% 30% 10%	0
<input type="checkbox"/> fc	20%	20%	20%	20%	20%	0
RCR	RCR:Room Cavity Ratio		Wall Exitance Coefficients (WEC)			
0.0						
1.0	.316 .179 .057	.308 .176 .056	.294 .169 .054	.281 .162 .052	.269 .156 .050	
2.0	.296 .162 .050	.289 .159 .049	.277 .154 .048	.265 .149 .047	.255 .144 .045	
3.0	.273 .145 .044	.267 .143 .043	.256 .139 .042	.246 .135 .041	.237 .131 .041	
4.0	.252 .131 .038	.247 .129 .038	.237 .126 .038	.228 .122 .037	.219 .119 .036	
5.0	.233 .119 .034	.228 .117 .034	.219 .114 .034	.211 .111 .033	.203 .109 .033	
6.0	.215 .108 .031	.211 .107 .031	.203 .104 .030	.196 .102 .030	.189 .100 .030	
7.0	.200 .099 .028	.197 .098 .028	.190 .096 .028	.183 .094 .027	.177 .092 .027	
8.0	.187 .091 .026	.184 .090 .026	.177 .089 .025	.171 .087 .025	.166 .085 .025	
9.0	.175 .085 .024	.172 .084 .024	.166 .082 .023	.161 .081 .023	.156 .079 .023	
10.0	.165 .079 .022	.162 .078 .022	.157 .077 .022	.152 .075 .021	.147 .074 .021	

<input type="checkbox"/> cc	80%	70%	50%	30%	10%	0
<input type="checkbox"/> w	50% 30% 10%	50% 30% 10%	50% 30% 10%	50% 30% 10%	50% 30% 10%	0
<input type="checkbox"/> fc	20%	20%	20%	20%	20%	0
RCR	RCR:Room Cavity Ratio		Ceiling Cavity Exitance Coefficients (CCEC)			
0.0	.201 .201 .201	.172 .172 .172	.117 .117 .117	.067 .067 .067	.022 .022 .022	
1.0	.192 .167 .145	.164 .143 .125	.112 .099 .086	.065 .057 .050	.021 .018 .016	
2.0	.184 .143 .109	.157 .123 .094	.108 .085 .065	.062 .050 .038	.020 .016 .012	
3.0	.176 .125 .085	.151 .108 .074	.104 .075 .052	.060 .044 .030	.019 .014 .010	
4.0	.169 .112 .069	.145 .097 .060	.100 .068 .042	.058 .040 .025	.019 .013 .008	
5.0	.161 .102 .058	.138 .088 .050	.095 .062 .036	.055 .036 .021	.018 .012 .007	
6.0	.154 .094 .050	.132 .081 .044	.091 .057 .031	.053 .033 .018	.017 .011 .006	
7.0	.147 .087 .044	.127 .075 .039	.087 .053 .027	.051 .031 .016	.016 .010 .005	
8.0	.141 .081 .040	.121 .070 .035	.084 .049 .025	.049 .029 .015	.016 .010 .005	
9.0	.135 .076 .036	.116 .066 .032	.080 .046 .022	.047 .027 .013	.015 .009 .004	
10.0	.129 .072 .034	.111 .062 .029	.077 .044 .021	.045 .026 .012	.015 .009 .004	

C Range: 0 - 360DEG
 C Interval: 15.0DEG
 Test Speed: HIGH
 Temperature:25.3DEG
 Operators:DAMIN
 Test Date:2021-11-29

Range: 0 - 180DEG
 Interval: 1.0DEG
 Test System:EVERFINE GO-2000A_V1 SYSTEM V2.00.444
 Humidity:65.0%
 Test Distance:4.940m [K=1.0000]
 Remarks:

UGR(Unified Glare Rating) Table

NAME: LED Strip	TYPE: Indoor lighting	WEIGHT: 20g
SPEC.: 2835 084LED	DIM.: 500*12*1.2mm	SERIAL No.: 20211123001
MFR.: EVERFINE	SUR.: 500*12*1.2mm	Shielding Angle:

ceiling/cavity	0.7	0.7	0.5	0.5	0.3	0.7	0.7	0.5	0.5	0.3
walls	0.5	0.3	0.5	0.3	0.3	0.5	0.3	0.5	0.3	0.3
working plane	0.2	0.2	0.2	0.2	0.2	0.2	0.2	0.2	0.2	0.2
Room dimensions	Viewed crosswise					Viewed endwise				
x = 2H y = 2H	25.0	26.5	25.2	26.7	26.9	24.5	26.0	24.8	26.2	26.5
3H	26.8	28.2	27.1	28.4	28.7	26.1	27.5	26.4	27.7	28.0
4H	27.5	28.9	27.9	29.2	29.4	26.7	28.0	27.0	28.3	28.6
6H	28.2	29.5	28.6	29.8	30.1	27.1	28.3	27.4	28.6	28.9
8H	28.5	29.7	28.8	30.0	30.3	27.2	28.4	27.5	28.7	29.0
12H	28.7	29.8	29.0	30.2	30.5	27.2	28.4	27.6	28.7	29.1
4H 2H	25.6	26.9	25.9	27.2	27.5	25.3	26.6	25.6	26.9	27.2
3H	27.6	28.8	28.0	29.1	29.4	27.0	28.2	27.4	28.5	28.9
4H	28.5	29.6	28.9	29.9	30.3	27.8	28.8	28.2	29.2	29.5
6H	29.3	30.3	29.7	30.7	31.0	28.3	29.3	28.7	29.6	30.0
8H	29.7	30.5	30.1	30.9	31.3	28.5	29.4	28.9	29.7	30.2
12H	29.9	30.7	30.4	31.2	31.6	28.6	29.4	29.0	29.8	30.2
8H 4H	28.8	29.7	29.3	30.1	30.5	28.2	29.0	28.6	29.4	29.9
6H	29.8	30.5	30.3	31.0	31.4	28.9	29.6	29.3	30.0	30.5
8H	30.2	30.9	30.7	31.3	31.8	29.1	29.8	29.6	30.2	30.7
12H	30.7	31.2	31.2	31.7	32.2	29.3	29.9	29.8	30.4	30.9
12H 4H	28.8	29.6	29.3	30.1	30.5	28.2	29.0	28.7	29.4	29.9
6H	29.9	30.5	30.4	31.0	31.5	29.0	29.6	29.5	30.1	30.6
8H	30.4	30.9	30.9	31.4	31.9	29.3	29.9	29.8	30.4	30.9
Variations with the observer position at spacings(CIE Pub.117):										
S = 1.0H	+ 0.1 / - 0.2					+ 0.1 / - 0.2				
1.5H	+ 0.2 / - 0.3					+ 0.2 / - 0.4				
2.0H	+ 0.1 / - 0.3					+ 0.2 / - 0.5				

CIE Pub.117, 180.5 lm Total Lamp Luminous Flux Correct (8log(F/F0) = -5.9)
 Area: 0.012 m2

C Range: 0 - 360DEG
 C Interval: 15.0DEG
 Test Speed: HIGH
 Temperature:25.3DEG
 Operators:DAMIN
 Test Date:2021-11-29

Range: 0 - 180DEG
 Interval: 1.0DEG
 Test System:EVERFINE GO-2000A_V1 SYSTEM V2.00.444
 Humidity:65.0%
 Test Distance:4.940m [K=1.0000]
 Remarks:

UTILIZATION FACTORS TABLE

NAME: LED Strip	TYPE: Indoor lighting	WEIGHT: 20g
SPEC.: 2835 084LED	DIM.: 500*12*1.2mm	SERIAL No.: 20211123001
MFR.: EVERFINE	SUR.: 500*12*1.2mm	Shielding Angle:

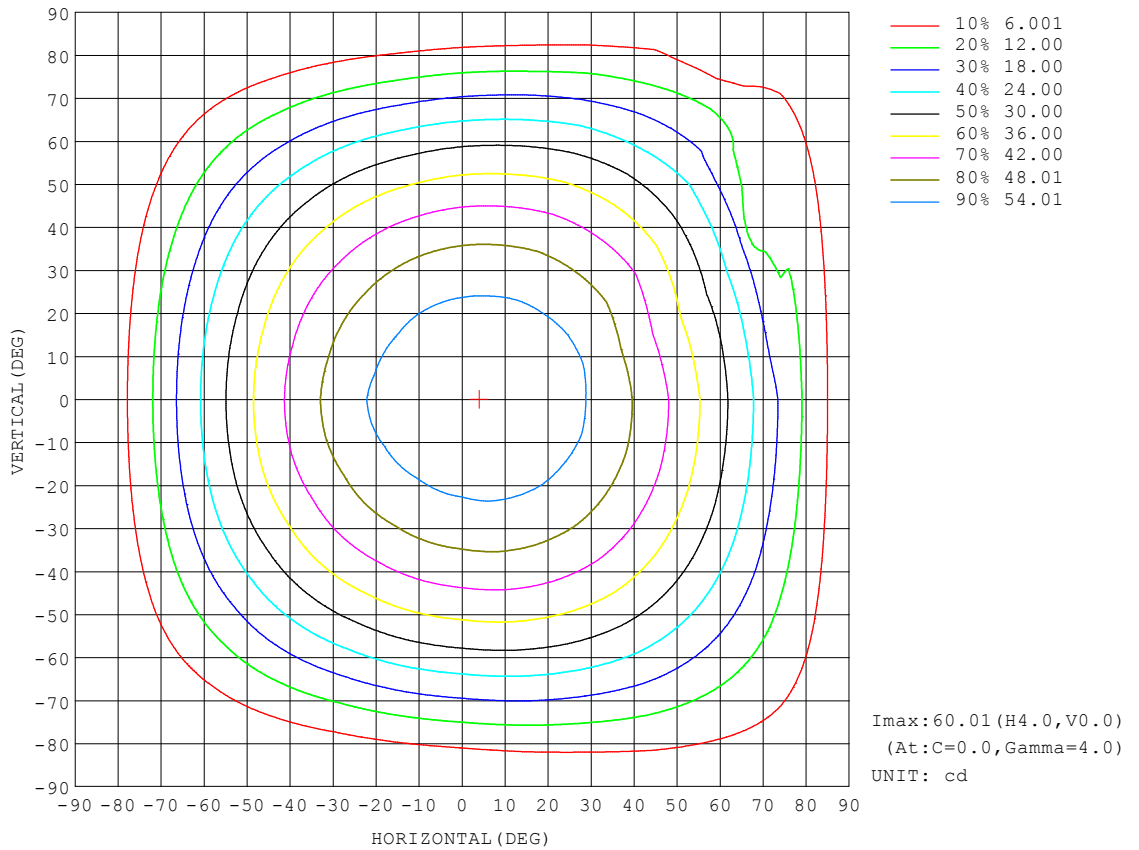
REFLECTANCE										
Ceiling	0.8	0.8	0.8	0.7	0.7	0.7	0.5	0.5	0.5	0
Walls	0.7	0.5	0.3	0.7	0.5	0.3	0.7	0.5	0.3	0
Working plane	0.2	0.2	0.2	0.2	0.2	0.2	0.2	0.2	0.2	0
ROOM INDEX	UTILIZATION FACTORS (PERCENT) $k(RI) \times RCR = 5$									
k = 0.60	56	44	37	55	44	37	54	44	37	31
0.80	66	54	47	65	54	47	63	53	46	39
1.00	75	63	56	73	63	56	71	64	55	48
1.25	82	71	64	80	70	63	78	69	63	55
1.50	87	77	70	85	76	69	82	74	68	60
2.00	94	85	79	92	84	78	88	81	76	68
2.50	98	90	84	96	89	83	92	86	81	72
3.00	101	94	89	99	93	88	95	90	85	76
4.00	106	100	95	103	98	93	98	94	91	81
5.00	108	103	99	105	101	97	101	97	94	84
ROOM INDEX	UF(total)									Direct
According to DIN EN 13032-2 2004			Suspended				SHRNOM = 1.25			

C Range: 0 - 360DEG
 C Interval: 15.0DEG
 Test Speed: HIGH
 Temperature: 25.3DEG
 Operators: DAMIN
 Test Date: 2021-11-29

Range: 0 - 180DEG
 Interval: 1.0DEG
 Test System: EVERFINE GO-2000A_V1 SYSTEM V2.00.444
 Humidity: 65.0%
 Test Distance: 4.940m [K=1.0000]
 Remarks:

ISOCANDELA DIAGRAM

NAME: LED Strip	TYPE: Indoor lighting	WEIGHT: 20g
SPEC.: 2835 084LED	DIM.: 500*12*1.2mm	SERIAL No.: 20211123001
MFR.: EVERFINE	SUR.: 500*12*1.2mm	Shielding Angle:

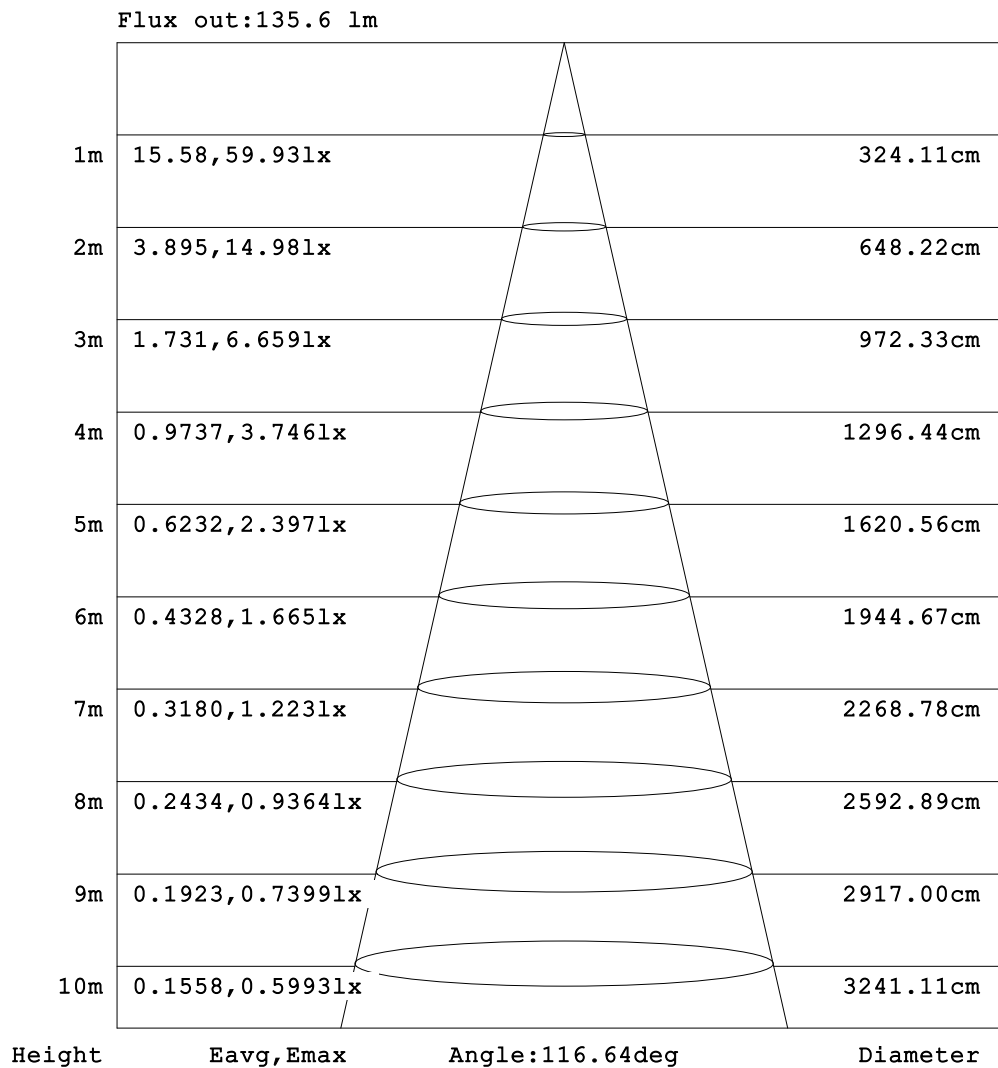


C Range: 0 - 360DEG
 C Interval: 15.0DEG
 Test Speed: HIGH
 Temperature: 25.3DEG
 Operators: DAMIN
 Test Date: 2021-11-29

Range: 0 - 180DEG
 Interval: 1.0DEG
 Test System: EVERFINE GO-2000A_V1 SYSTEM V2.00.444
 Humidity: 65.0%
 Test Distance: 4.940m [K=1.0000]
 Remarks:

AAI Figure

NAME: LED Strip	TYPE: Indoor lighting	WEIGHT: 20g
SPEC.: 2835 084LED	DIM.: 500*12*1.2mm	SERIAL No.: 20211123001
MFR.: EVERFINE	SUR.: 500*12*1.2mm	Shielding Angle:



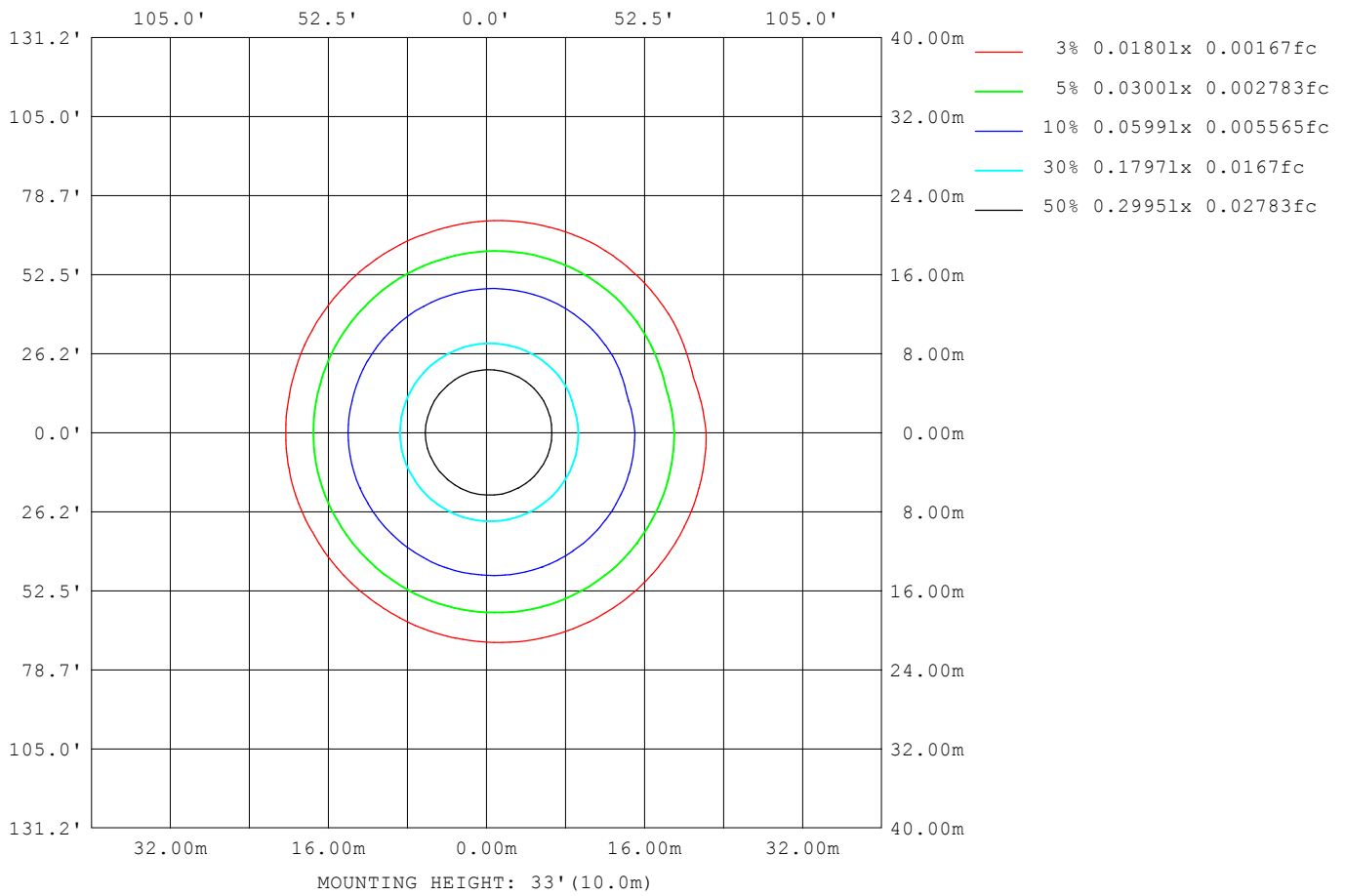
Note: The Curves indicate the illuminated area and the average illumination when the luminaire is at different distance.

C Range: 0 - 360DEG
 C Interval: 15.0DEG
 Test Speed: HIGH
 Temperature: 25.3DEG
 Operators: DAMIN
 Test Date: 2021-11-29

Range: 0 - 180DEG
 Interval: 1.0DEG
 Test System: EVERFINE GO-2000A_V1 SYSTEM V2.00.444
 Humidity: 65.0%
 Test Distance: 4.940m [K=1.0000]
 Remarks:

ISOLUX DIAGRAM

NAME: LED Strip	TYPE: Indoor lighting	WEIGHT: 20g
SPEC.: 2835 084LED	DIM.: 500*12*1.2mm	SERIAL No.: 20211123001
MFR.: EVERFINE	SUR.: 500*12*1.2mm	Shielding Angle:



C Range: 0 - 360DEG
 C Interval: 15.0DEG
 Test Speed: HIGH
 Temperature: 25.3DEG
 Operators: DAMIN
 Test Date: 2021-11-29

Range: 0 - 180DEG
 Interval: 1.0DEG
 Test System: EVERFINE GO-2000A_V1 SYSTEM V2.00.444
 Humidity: 65.0%
 Test Distance: 4.940m [K=1.0000]
 Remarks:

LED Avg.L Report

NAME: LED Strip	TYPE: Indoor lighting	WEIGHT: 20g
SPEC.: 2835 084LED	DIM.: 500*12*1.2mm	SERIAL No.: 20211123001
MFR.: EVERFINE	SUR.: 500*12*1.2mm	Shielding Angle:

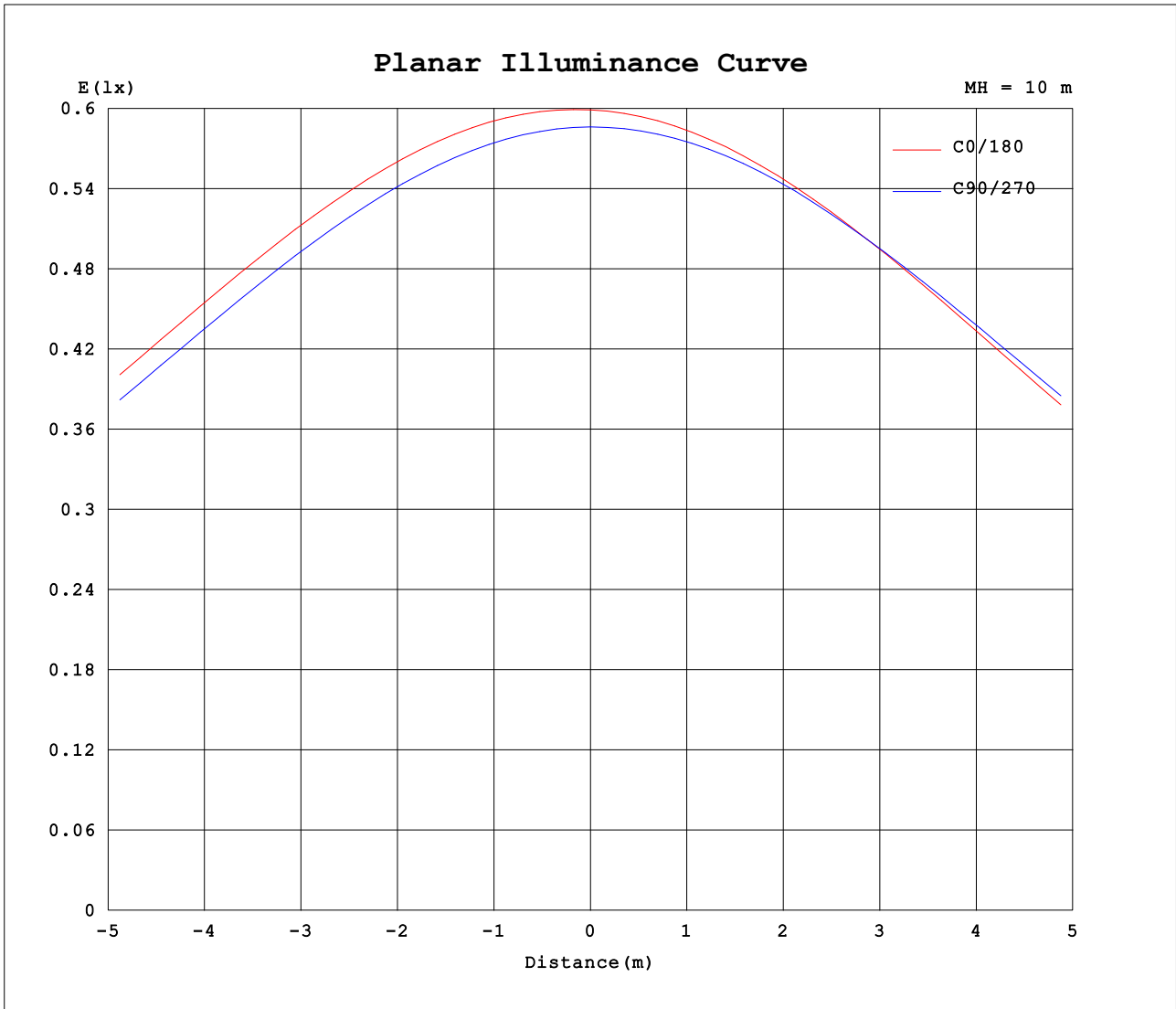
AvgL	cd/m2
L_0~180 (65) av	4573
L_0~180 (75) av	4042
L_0~180 (85) av	3286
L_90~270 (65) av	4583
L_90~270 (75) av	4027
L_90~270 (85) av	2986
L_45 (65) av	4572
L_45 (75) av	3999
L_45 (85) av	3060

Standard: GB/T 29293-2012

C Range: 0 - 360DEG
 C Interval: 15.0DEG
 Test Speed: HIGH
 Temperature:25.3DEG
 Operators:DAMIN
 Test Date:2021-11-29

Range: 0 - 180DEG
 Interval: 1.0DEG
 Test System:EVERFINE GO-2000A_V1 SYSTEM V2.00.444
 Humidity:65.0%
 Test Distance:4.940m [K=1.0000]
 Remarks:

Planar Illuminance Curve



C Range: 0 - 360DEG
 C Interval: 15.0DEG
 Test Speed: HIGH
 Temperature: 25.3DEG
 Operators: DAMIN
 Test Date: 2021-11-29

Range: 0 - 180DEG
 Interval: 1.0DEG
 Test System: EVERFINE GO-2000A_V1 SYSTEM V2.00.444
 Humidity: 65.0%
 Test Distance: 4.940m [K=1.0000]
 Remarks:

LUMINOUS DISTRIBUTION INTENSITY DATA

NAME: LED Strip	TYPE: Indoor lighting	WEIGHT: 20g
SPEC.: 2835 084LED	DIM.: 500*12*1.2mm	SERIAL No.: 20211123001
MFR.: EVERFINE	SUR.: 500*12*1.2mm	Shielding Angle:

Table--1

UNIT: cd

C (DEG) \ □ (DEG)	0	15	30	45	60	75	90	105	120	135	150	165	180	195	210	225	240	255	270
0	59.9	59.5	59.0	58.9	58.9	58.8	58.6	58.7	58.7	58.9	59.3	59.8	59.9	59.5	59.0	58.9	58.9	58.8	58.6
5	60.0	59.7	59.1	58.9	58.8	58.7	58.4	58.3	58.3	58.4	58.7	59.2	59.4	58.9	58.5	58.4	58.5	58.5	58.4
10	59.6	59.4	58.8	58.6	58.3	58.1	57.7	57.6	57.4	57.5	57.7	58.2	58.4	57.9	57.6	57.5	57.7	57.8	57.8
15	58.7	58.6	58.0	57.7	57.4	57.1	56.6	56.4	56.2	56.2	56.3	56.7	56.9	56.4	56.2	56.2	56.5	56.7	56.8
20	57.4	57.3	56.8	56.5	56.0	55.6	55.0	54.7	54.4	54.4	54.4	54.8	55.0	54.5	54.4	54.5	54.8	55.1	55.4
25	55.6	55.6	55.1	54.8	54.3	53.8	53.1	52.7	52.3	52.2	52.1	52.4	52.6	52.2	52.2	52.3	52.7	53.1	53.5
30	53.4	53.5	53.0	52.6	52.1	51.5	50.7	50.2	49.7	49.6	49.4	49.7	49.8	49.5	49.5	49.7	50.2	50.7	51.2
35	50.8	50.9	50.5	50.1	49.5	48.8	47.9	47.4	46.7	46.5	46.3	46.6	46.6	46.3	46.5	46.7	47.2	47.8	48.4
40	47.7	47.9	47.6	47.2	46.4	45.7	44.7	44.1	43.4	43.0	42.7	43.0	43.0	42.8	43.0	43.3	43.9	44.6	45.3
45	44.3	44.4	44.2	43.8	43.0	42.2	41.1	40.4	39.6	39.2	38.8	39.0	39.0	38.9	39.1	39.5	40.2	40.9	41.8
50	40.5	40.6	40.3	40.0	39.2	38.2	37.1	36.3	35.4	34.9	34.5	34.7	34.7	34.6	34.9	35.3	36.1	36.8	37.8
55	36.3	36.3	36.1	35.7	34.9	33.9	32.7	31.8	30.8	30.2	29.8	30.0	29.9	29.9	30.3	30.7	31.5	32.4	33.5
60	31.7	31.8	31.5	31.1	30.2	29.2	27.9	26.9	25.8	25.2	24.8	24.9	24.9	24.9	25.3	25.8	26.7	27.6	28.7
65	26.9	26.8	26.5	26.0	25.2	24.1	22.8	21.8	20.6	20.0	19.5	19.6	19.5	19.6	20.1	20.6	21.5	22.4	23.7
70	21.7	21.6	21.2	20.7	19.8	18.8	17.4	16.4	15.2	14.5	14.0	14.2	14.1	14.2	14.7	15.2	16.2	17.1	18.4
75	16.3	16.3	15.8	15.3	14.3	13.4	12.0	11.1	9.91	9.31	8.81	8.89	8.77	8.90	9.42	9.97	10.9	11.7	13.0
80	11.0	10.9	10.4	9.90	8.97	8.10	6.96	6.08	5.12	4.61	4.17	4.25	4.09	4.19	4.65	5.11	5.93	6.71	7.71
85	5.99	5.95	5.51	5.10	4.34	3.67	2.84	2.26	1.66	1.32	1.05	1.10	0.88	0.95	1.27	1.59	2.14	2.67	3.40
90	2.05	2.06	1.82	1.61	1.22	0.92	0.54	0.47	0.37	0.31	0.35	0.48	0.24	0.23	0.26	0.27	0.34	0.43	0.75
95	0.29	0.31	0.32	0.32	0.30	0.22	0.21	0.25	0.23	0.25	0.32	0.46	0.23	0.24	0.24	0.22	0.23	0.22	0.20
100	0.23	0.21	0.21	0.21	0.21	0.21	0.22	0.23	0.23	0.24	0.30	0.47	0.24	0.24	0.24	0.23	0.23	0.22	0.22
105	0.22	0.21	0.22	0.22	0.22	0.24	0.24	0.25	0.25	0.27	0.31	0.47	0.27	0.26	0.27	0.26	0.26	0.25	0.25
110	0.23	0.25	0.24	0.26	0.25	0.28	0.27	0.29	0.28	0.30	0.32	0.45	0.31	0.30	0.31	0.29	0.30	0.28	0.29
115	0.27	0.28	0.28	0.29	0.29	0.31	0.31	0.33	0.32	0.33	0.34	0.45	0.35	0.34	0.34	0.33	0.34	0.32	0.33
120	0.31	0.32	0.31	0.33	0.33	0.35	0.35	0.36	0.36	0.37	0.36	0.44	0.38	0.37	0.38	0.37	0.38	0.36	0.37
125	0.34	0.35	0.35	0.37	0.36	0.39	0.38	0.40	0.39	0.40	0.39	0.43	0.42	0.40	0.41	0.40	0.41	0.39	0.40
130	0.38	0.39	0.38	0.40	0.40	0.42	0.42	0.43	0.43	0.44	0.43	0.44	0.45	0.44	0.45	0.44	0.44	0.43	0.44
135	0.41	0.43	0.42	0.44	0.44	0.46	0.45	0.47	0.47	0.48	0.47	0.47	0.48	0.48	0.48	0.47	0.48	0.47	0.47
140	0.45	0.47	0.46	0.47	0.47	0.49	0.49	0.50	0.50	0.51	0.50	0.51	0.51	0.51	0.51	0.50	0.51	0.49	0.50
145	0.48	0.50	0.49	0.51	0.51	0.53	0.52	0.54	0.53	0.54	0.53	0.54	0.54	0.53	0.54	0.53	0.54	0.53	0.54
150	0.52	0.54	0.53	0.54	0.54	0.56	0.55	0.57	0.56	0.57	0.57	0.57	0.57	0.56	0.57	0.56	0.57	0.56	0.57
155	0.56	0.57	0.56	0.58	0.57	0.59	0.58	0.60	0.59	0.60	0.60	0.61	0.60	0.58	0.60	0.59	0.60	0.58	0.59
160	0.59	0.60	0.60	0.60	0.60	0.61	0.61	0.62	0.61	0.63	0.63	0.65	0.63	0.62	0.62	0.61	0.62	0.61	0.62
165	0.62	0.63	0.62	0.63	0.62	0.64	0.63	0.65	0.64	0.66	0.66	0.69	0.65	0.63	0.64	0.63	0.64	0.63	0.64
170	0.66	0.66	0.65	0.66	0.65	0.66	0.65	0.67	0.66	0.68	0.68	0.73	0.67	0.65	0.67	0.65	0.66	0.65	0.66
175	0.67	0.68	0.67	0.68	0.67	0.68	0.67	0.68	0.68	0.69	0.71	0.77	0.69	0.67	0.68	0.67	0.68	0.67	0.68
180	0.69	0.69	0.68	0.68	0.68	0.68	0.68	0.69	0.69	0.69	0.73	0.80	0.69	0.68	0.69	0.68	0.69	0.68	0.68

C Range: 0 - 360DEG
 C Interval: 15.0DEG
 Test Speed: HIGH
 Temperature: 25.3DEG
 Operators: DAMIN
 Test Date: 2021-11-29

□ Range: 0 - 180DEG
 □ Interval: 1.0DEG
 Test System: EVERFINE GO-2000A_V1 SYSTEM V2.00.444
 Humidity: 65.0%
 Test Distance: 4.940m [K=1.0000]
 Remarks:

LUMINOUS DISTRIBUTION INTENSITY DATA

NAME: LED Strip	TYPE: Indoor lighting	WEIGHT: 20g
SPEC.: 2835 084LED	DIM.: 500*12*1.2mm	SERIAL No.: 20211123001
MFR.: EVERFINE	SUR.: 500*12*1.2mm	Shielding Angle:

Table--2

UNIT: cd

C (DEG) □ (DEG)	285	300	315	330	345														
0	58.7	58.7	58.9	59.3	59.8														
5	58.6	58.7	59.0	59.4	60.0														
10	58.0	58.3	58.6	59.1	59.7														
15	57.1	57.5	57.8	58.3	58.8														
20	55.7	56.2	56.5	57.1	57.6														
25	53.9	54.5	54.9	55.4	55.8														
30	51.7	52.3	52.8	53.3	53.6														
35	49.1	49.8	50.3	50.8	50.9														
40	46.0	46.8	47.3	47.8	46.9														
45	42.6	43.5	43.9	44.4	43.3														
50	38.7	39.7	40.1	40.7	39.1														
55	34.4	35.5	35.9	36.1	34.2														
60	29.8	30.9	31.4	31.1	30.1														
65	24.8	25.9	26.2	25.8	24.8														
70	19.5	20.5	20.7	20.7	17.9														
75	14.0	14.8	15.1	15.4	9.49														
80	8.60	9.34	9.72	9.61	9.85														
85	3.86	4.44	4.79	3.20	5.90														
90	0.51	1.11	1.84	2.13	2.18														
95	0.21	0.25	0.29	0.30	0.35														
100	0.21	0.21	0.22	0.26	0.29														
105	0.23	0.24	0.23	0.24	0.29														
110	0.27	0.27	0.26	0.28	0.31														
115	0.31	0.31	0.30	0.31	0.36														
120	0.34	0.35	0.33	0.35	0.39														
125	0.38	0.38	0.37	0.40	0.44														
130	0.42	0.42	0.41	0.43	0.48														
135	0.45	0.45	0.44	0.47	0.52														
140	0.48	0.49	0.48	0.50	0.57														
145	0.52	0.52	0.51	0.54	0.61														
150	0.55	0.55	0.55	0.57	0.65														
155	0.58	0.59	0.58	0.61	0.69														
160	0.60	0.61	0.61	0.64	0.72														
165	0.63	0.64	0.63	0.67	0.75														
170	0.65	0.66	0.66	0.69	0.78														
175	0.67	0.68	0.68	0.71	0.80														
180	0.68	0.69	0.69	0.71	0.82														

C Range: 0 - 360DEG
 C Interval: 15.0DEG
 Test Speed: HIGH
 Temperature:25.3DEG
 Operators:DAMIN
 Test Date:2021-11-29

□ Range: 0 - 180DEG
 □ Interval: 1.0DEG
 Test System:EVERFINE GO-2000A_V1 SYSTEM V2.00.444
 Humidity:65.0%
 Test Distance:4.940m [K=1.0000]
 Remarks: