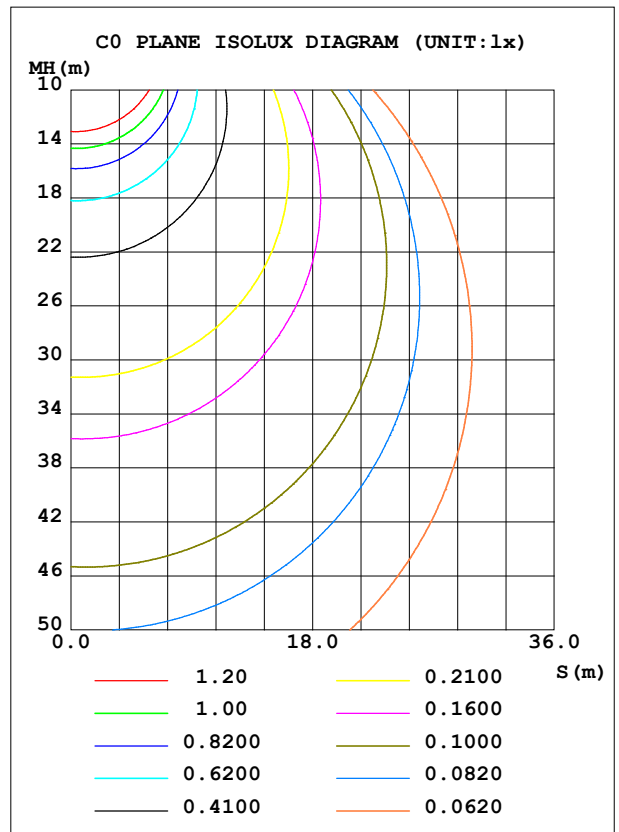
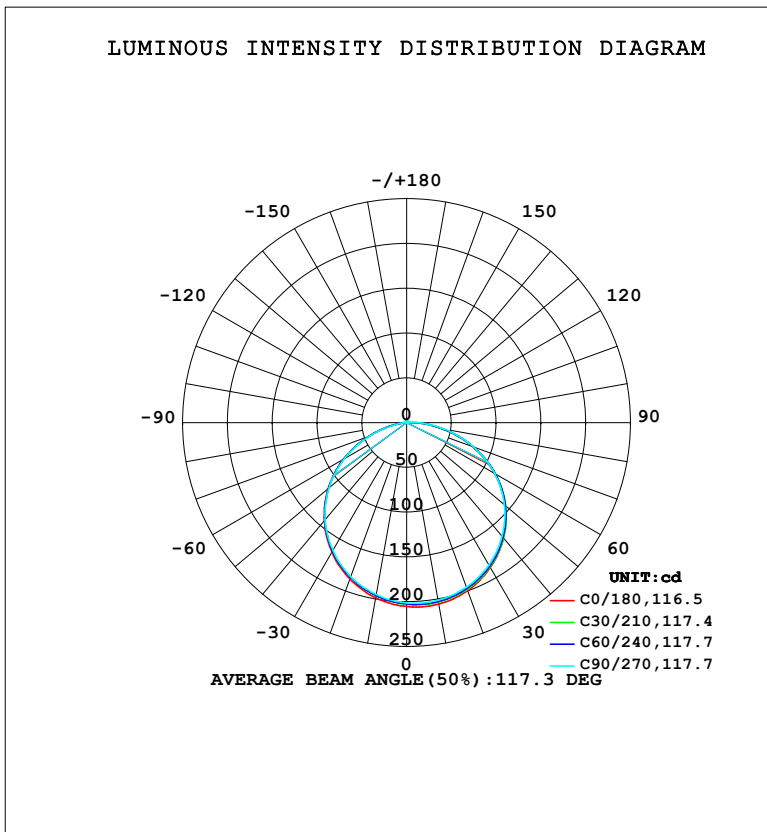


LUMINAIRE PHOTOMETRIC TEST REPORT

NAME: LED Strip	TYPE: Indoor lighting	WEIGHT: 20g
SPEC.: LED	DIM.: 500*8*1.2MM	SERIAL No.: 20230807001
MFR.: EVERFINE	SUR.: 500*8MM	Shielding Angle:

DATA OF LAMP		PHOTOMETRIC DATA			
MODEL: 256B-24 (WCP) -UR-CV-HE-EP		Imax (cd)	206.3	S/MH (C0/180)	1.22
NOMINAL POWER (W)	4.49134	LOR (%)	100.0	S/MH (C90/270)	1.23
RATED VOLTAGE (V)	DC 24V	TOTAL FLUX (lm)	621.46	<input type="checkbox"/> UP, DN (C0-180)	1.0,55.5
NOMINAL FLUX (lm)	621.463	CIE CLASS	DIRECT	<input type="checkbox"/> UP, DN (C180-360)	0.8,42.7
LAMPS INSIDE	1	<input type="checkbox"/> up (%)	1.8	CIBSE SHR NOM	1.25
TEST VOLTAGE (V)	DC 24V	<input type="checkbox"/> down (%)	98.2	CIBSE SHR MAX	1.35



C Range: 0 - 360DEG
 C Interval: 15.0DEG
 Test Speed: HIGH
 Temperature: 25.3°C
 Operators: DAMIN
 Test Date: 2023-08-07

Range: 0 - 180DEG
 Interval: 1.0DEG
 Test System: EVERFINE GO-2000B_V1 SYSTEM V2.00.471
 Humidity: 65.0%
 Test Distance: 4.880m [K=1.0000]
 Remarks:

ZONAL FLUX DIAGRAM

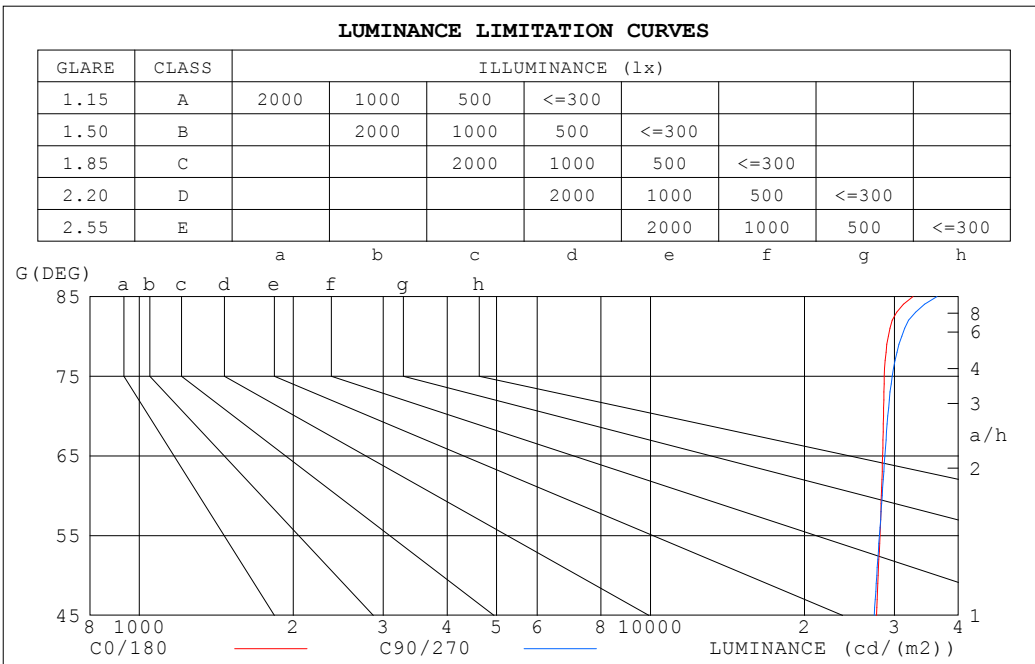
ZONAL FLUX DIAGRAM:

☐	C0	C45	C90	C135	C180	C225	C270	C315	☐	☐ zone	☐ total	%lum,lamp
10	205.7	203.0	201.3	199.5	198.6	195.6	195.1	195.4	0- 10	19.16	19.16	3.08,3.08
20	199.5	197.5	195.5	192.5	185.8	183.2	183.0	183.9	10- 20	55.15	74.31	12,12
30	186.9	185.9	183.6	179.6	167.1	165.1	164.9	166.6	20- 30	84.40	158.7	25.5,25.5
40	168.1	168.2	165.9	161.1	143.1	141.7	141.8	143.7	30- 40	103.2	261.9	42.1,42.1
50	143.4	144.5	142.5	137.4	114.3	113.4	113.3	113.2	40- 50	109.0	370.9	59.7,59.7
60	113.2	115.0	113.6	108.6	81.25	80.65	80.12	80.54	50- 60	100.3	471.2	75.8,75.8
70	78.12	79.90	79.66	75.84	45.42	45.11	43.75	44.62	60- 70	77.52	548.7	88.3,88.3
80	40.54	41.63	43.07	40.48	13.11	12.80	10.90	11.05	70- 80	45.91	594.6	95.7,95.7
90	8.768	9.523	10.89	11.63	1.351	1.403	0.7254	1.680	80- 90	15.97	610.6	98.2,98.2
100	0.9648	0.9610	0.7279	3.334	0.8397	0.8453	0.8716	0.9263	90-100	2.723	613.3	98.7,98.7
110	0.7999	0.8237	0.8979	2.588	1.090	1.100	1.146	1.163	100-110	1.299	614.6	98.9,98.9
120	1.046	1.070	1.095	1.094	1.341	1.355	1.407	1.429	110-120	1.272	615.9	99.1,99.1
130	1.293	1.324	1.329	1.321	1.587	1.603	1.656	1.701	120-130	1.272	617.2	99.3,99.3
140	1.540	1.575	1.579	1.580	1.820	1.834	1.885	1.974	130-140	1.274	618.4	99.5,99.5
150	1.779	1.818	1.813	1.840	2.044	2.046	2.093	2.215	140-150	1.189	619.6	99.7,99.7
160	2.016	2.042	2.033	2.093	2.251	2.229	2.272	2.423	150-160	0.9676	620.6	99.9,99.9
170	2.233	2.234	2.286	2.357	2.398	2.367	2.406	2.594	160-170	0.6497	621.2	100,100
180	2.388	2.374	2.423	2.610	2.397	2.381	2.402	2.622	170-180	0.2334	621.5	100,100
DEG	LUMINOUS INTENSITY:cd									UNIT:lm		

C Range: 0 - 360DEG
 C Interval: 15.0DEG
 Test Speed: HIGH
 Temperature:25.3°C
 Operators:DAMIN
 Test Date:2023-08-07

☐ Range: 0 - 180DEG
 ☐ Interval: 1.0DEG
 Test System:EVERFINE GO-2000B_V1 SYSTEM V2.00.471
 Humidity:65.0%
 Test Distance:4.880m [K=1.0000]
 Remarks:

LUMINANCE LIMITATION CURVES



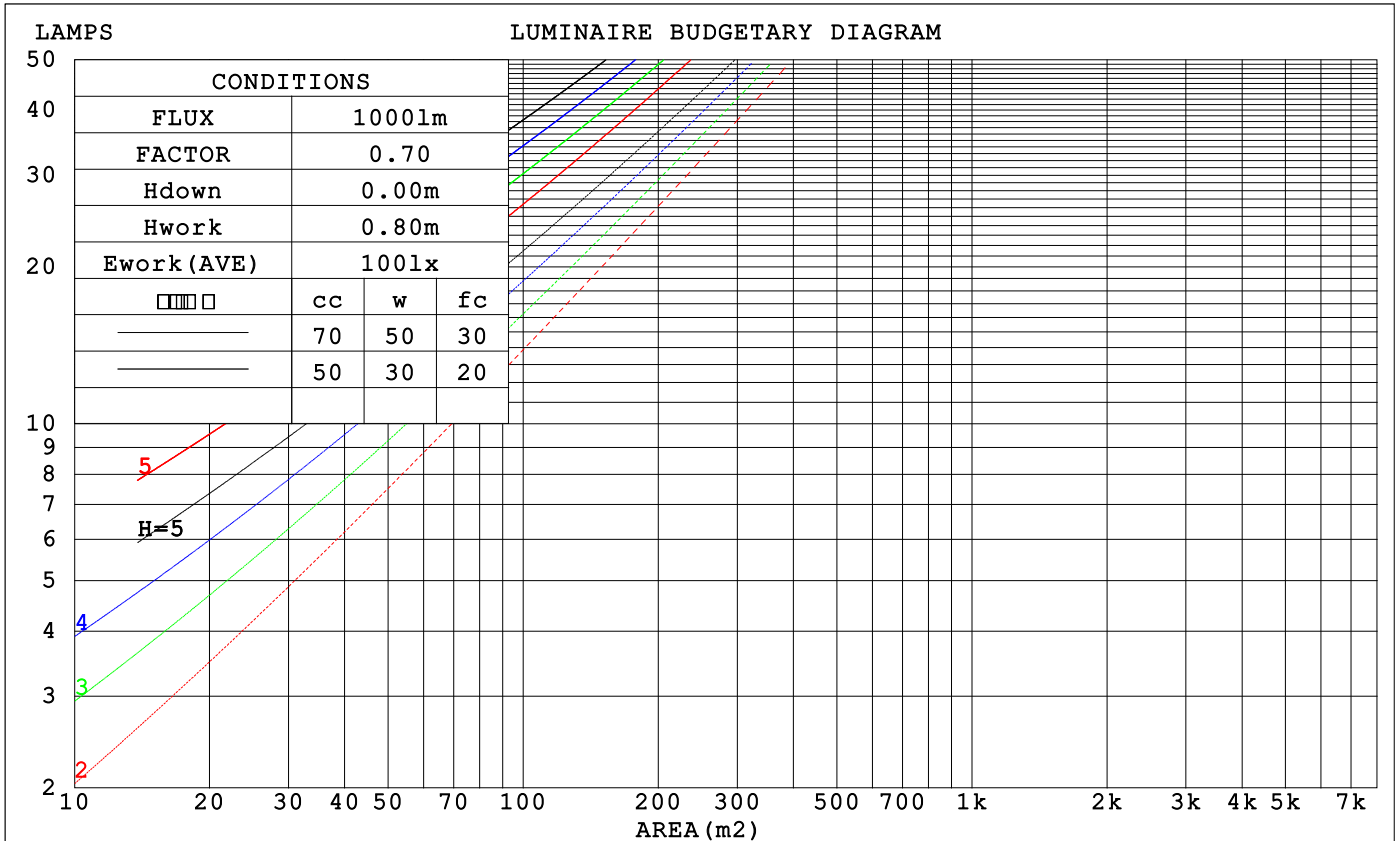
LUMINANCE cd/(m2)		
G (DEG)	C0/180	C90/270
85	32629	36333
80	29181	31006
75	28667	29697
70	28552	29115
65	28457	28751
60	28292	28389
55	28102	28049
50	27889	27704
45	27662	27386

C Range: 0 - 360DEG
 C Interval: 15.0DEG
 Test Speed: HIGH
 Temperature: 25.3°C
 Operators: DAMIN
 Test Date: 2023-08-07

Range: 0 - 180DEG
 Interval: 1.0DEG
 Test System: EVERFINE GO-2000B_V1 SYSTEM V2.00.471
 Humidity: 65.0%
 Test Distance: 4.880m [K=1.0000]
 Remarks:

CU AND LUMINAIRE BUDGETARY ESTIMATE DIAGRAM

□cc	80%			70%			50%			30%			10%			0
□w	50%	30%	10%	50%	30%	10%	50%	30%	10%	50%	30%	10%	50%	30%	10%	0
□fc	20%			20%			20%			20%			20%			0
RCR	RCR:Room Cavity Ratio			Coefficients of Utilization(CU)												
0.0	1.19	1.19	1.19	1.16	1.16	1.16	1.10	1.10	1.10	1.05	1.05	1.05	1.00	1.00	1.00	.98
1.0	1.03	.98	.94	1.00	.96	.93	.96	.92	.89	.92	.89	.86	.88	.86	.83	.81
2.0	.89	.82	.76	.87	.81	.75	.83	.78	.73	.80	.75	.71	.77	.73	.69	.67
3.0	.78	.70	.63	.76	.69	.62	.73	.67	.61	.70	.65	.60	.67	.63	.59	.56
4.0	.69	.60	.53	.68	.59	.53	.65	.58	.52	.62	.56	.51	.60	.55	.50	.48
5.0	.62	.52	.46	.60	.52	.45	.58	.50	.45	.56	.49	.44	.54	.48	.43	.41
6.0	.55	.46	.40	.54	.46	.39	.52	.45	.39	.50	.44	.38	.49	.43	.38	.36
7.0	.50	.41	.35	.49	.41	.35	.47	.40	.34	.46	.39	.34	.44	.38	.34	.32
8.0	.46	.37	.31	.45	.37	.31	.43	.36	.31	.42	.35	.30	.41	.35	.30	.28
9.0	.42	.34	.28	.41	.33	.28	.40	.33	.28	.39	.32	.27	.38	.31	.27	.25
10.0	.39	.31	.25	.38	.30	.25	.37	.30	.25	.36	.29	.25	.35	.29	.25	.23



C Range: 0 - 360DEG
 C Interval: 15.0DEG
 Test Speed: HIGH
 Temperature:25.3°C
 Operators:DAMIN
 Test Date:2023-08-07

□ Range: 0 - 180DEG
 □ Interval: 1.0DEG
 Test System:EVERFINE GO-2000B_V1 SYSTEM V2.00.471
 Humidity:65.0%
 Test Distance:4.880m [K=1.0000]
 Remarks:

WEC AND CCEC

□cc	80%			70%			50%			30%			10%			0
□w	50%	30%	10%	50%	30%	10%	50%	30%	10%	50%	30%	10%	50%	30%	10%	0
□fc	20%			20%			20%			20%			20%			0
RCR	RCR:Room Cavity Ratio						Wall Exitance Coefficients(WEC)									
0.0																
1.0	.321	.182	.058	.313	.179	.057	.299	.171	.055	.286	.165	.053	.273	.159	.051	
2.0	.299	.164	.050	.292	.161	.050	.279	.155	.048	.267	.150	.047	.257	.145	.046	
3.0	.275	.146	.044	.269	.144	.043	.258	.140	.042	.247	.135	.042	.238	.132	.041	
4.0	.253	.131	.039	.248	.130	.038	.238	.126	.038	.228	.123	.037	.220	.119	.036	
5.0	.233	.119	.034	.228	.117	.034	.220	.114	.034	.211	.111	.033	.203	.109	.033	
6.0	.216	.108	.031	.212	.107	.031	.204	.104	.030	.196	.102	.030	.189	.100	.030	
7.0	.201	.099	.028	.197	.098	.028	.190	.096	.028	.183	.094	.027	.177	.092	.027	
8.0	.187	.091	.026	.184	.090	.026	.177	.089	.025	.171	.087	.025	.166	.085	.025	
9.0	.175	.085	.024	.172	.084	.024	.166	.082	.023	.161	.081	.023	.156	.079	.023	
10.0	.165	.079	.022	.162	.078	.022	.157	.077	.022	.152	.075	.021	.147	.074	.021	

□cc	80%			70%			50%			30%			10%			0
□w	50%	30%	10%	50%	30%	10%	50%	30%	10%	50%	30%	10%	50%	30%	10%	0
□fc	20%			20%			20%			20%			20%			0
RCR	RCR:Room Cavity Ratio						Ceiling Cavity Exitance Coefficients(CCEC)									
0.0	.204	.204	.204	.174	.174	.174	.119	.119	.119	.068	.068	.068	.022	.022	.022	
1.0	.195	.169	.147	.166	.145	.126	.114	.100	.087	.066	.058	.051	.021	.019	.016	
2.0	.187	.145	.111	.160	.125	.096	.110	.087	.067	.063	.050	.039	.020	.016	.013	
3.0	.179	.128	.087	.153	.110	.076	.105	.077	.053	.061	.045	.031	.020	.015	.010	
4.0	.171	.115	.071	.147	.099	.062	.101	.069	.044	.059	.040	.026	.019	.013	.008	
5.0	.164	.104	.060	.141	.090	.053	.097	.063	.037	.056	.037	.022	.018	.012	.007	
6.0	.157	.096	.053	.135	.083	.046	.093	.058	.032	.054	.034	.019	.017	.011	.006	
7.0	.150	.089	.047	.129	.077	.041	.089	.054	.029	.052	.032	.017	.017	.010	.006	
8.0	.143	.083	.042	.123	.072	.037	.085	.051	.026	.050	.030	.016	.016	.010	.005	
9.0	.137	.079	.039	.118	.068	.034	.082	.048	.024	.048	.028	.014	.015	.009	.005	
10.0	.132	.074	.036	.113	.064	.032	.079	.045	.022	.046	.027	.013	.015	.009	.004	

C Range: 0 - 360DEG
 C Interval: 15.0DEG
 Test Speed: HIGH
 Temperature:25.3°C
 Operators:DAMIN
 Test Date:2023-08-07

□ Range: 0 - 180DEG
 □ Interval: 1.0DEG
 Test System:EVERFINE GO-2000B_V1 SYSTEM V2.00.471
 Humidity:65.0%
 Test Distance:4.880m [K=1.0000]
 Remarks:

UGR(Unified Glare Rating) Table

ceiling/cavity	0.7	0.7	0.5	0.5	0.3	0.7	0.7	0.5	0.5	0.3
walls	0.5	0.3	0.5	0.3	0.3	0.5	0.3	0.5	0.3	0.3
working plane	0.2	0.2	0.2	0.2	0.2	0.2	0.2	0.2	0.2	0.2
Room dimensions	Viewed crosswise					Viewed endwise				
x = 2H y = 2H	26.6	28.2	26.9	28.4	28.6	26.6	28.2	26.9	28.4	28.6
3H	28.5	29.9	28.8	30.2	30.4	28.5	29.9	28.8	30.2	30.5
4H	29.3	30.6	29.6	30.9	31.2	29.4	30.7	29.7	31.0	31.3
6H	30.0	31.2	30.3	31.5	31.9	30.1	31.3	30.4	31.6	32.0
8H	30.2	31.5	30.6	31.8	32.1	30.4	31.6	30.7	31.9	32.2
12H	30.5	31.6	30.9	32.0	32.3	30.6	31.8	31.0	32.1	32.5
4H 2H	27.4	28.7	27.7	29.0	29.3	27.4	28.7	27.7	29.0	29.3
3H	29.4	30.6	29.8	30.9	31.2	29.4	30.6	29.8	30.9	31.3
4H	30.3	31.4	30.7	31.8	32.1	30.4	31.5	30.8	31.8	32.2
6H	31.2	32.1	31.6	32.5	32.9	31.3	32.2	31.7	32.6	33.0
8H	31.5	32.4	32.0	32.8	33.2	31.6	32.5	32.1	32.9	33.4
12H	31.8	32.6	32.3	33.1	33.5	32.0	32.8	32.4	33.2	33.7
8H 4H	30.7	31.6	31.2	32.0	32.4	30.8	31.7	31.2	32.1	32.5
6H	31.7	32.5	32.2	32.9	33.4	31.8	32.6	32.3	33.0	33.5
8H	32.2	32.9	32.7	33.3	33.8	32.3	33.0	32.8	33.4	33.9
12H	32.7	33.2	33.2	33.7	34.2	32.8	33.4	33.3	33.8	34.4
12H 4H	30.8	31.6	31.2	32.0	32.4	30.8	31.6	31.3	32.0	32.5
6H	31.9	32.5	32.3	33.0	33.5	31.9	32.6	32.4	33.1	33.5
8H	32.4	33.0	32.9	33.4	34.0	32.5	33.1	33.0	33.5	34.1
Variations with the observer position at spacings(CIE Pub.117):										
S = 1.0H	+ 0.1 / - 0.2					+ 0.1 / - 0.1				
1.5H	+ 0.2 / - 0.3					+ 0.2 / - 0.3				
2.0H	+ 0.1 / - 0.4					+ 0.1 / - 0.4				

CIE Pub.117, 621.5 lm Total Lamp Luminous Flux Correct (8log(F/F0) = -1.7)
 Area: 0.008 m2

C Range: 0 - 360DEG
 C Interval: 15.0DEG
 Test Speed: HIGH
 Temperature:25.3°C
 Operators:DAMIN
 Test Date:2023-08-07

Range: 0 - 180DEG
 Interval: 1.0DEG
 Test System:EVERFINE GO-2000B_V1 SYSTEM V2.00.471
 Humidity:65.0%
 Test Distance:4.880m [K=1.0000]
 Remarks:

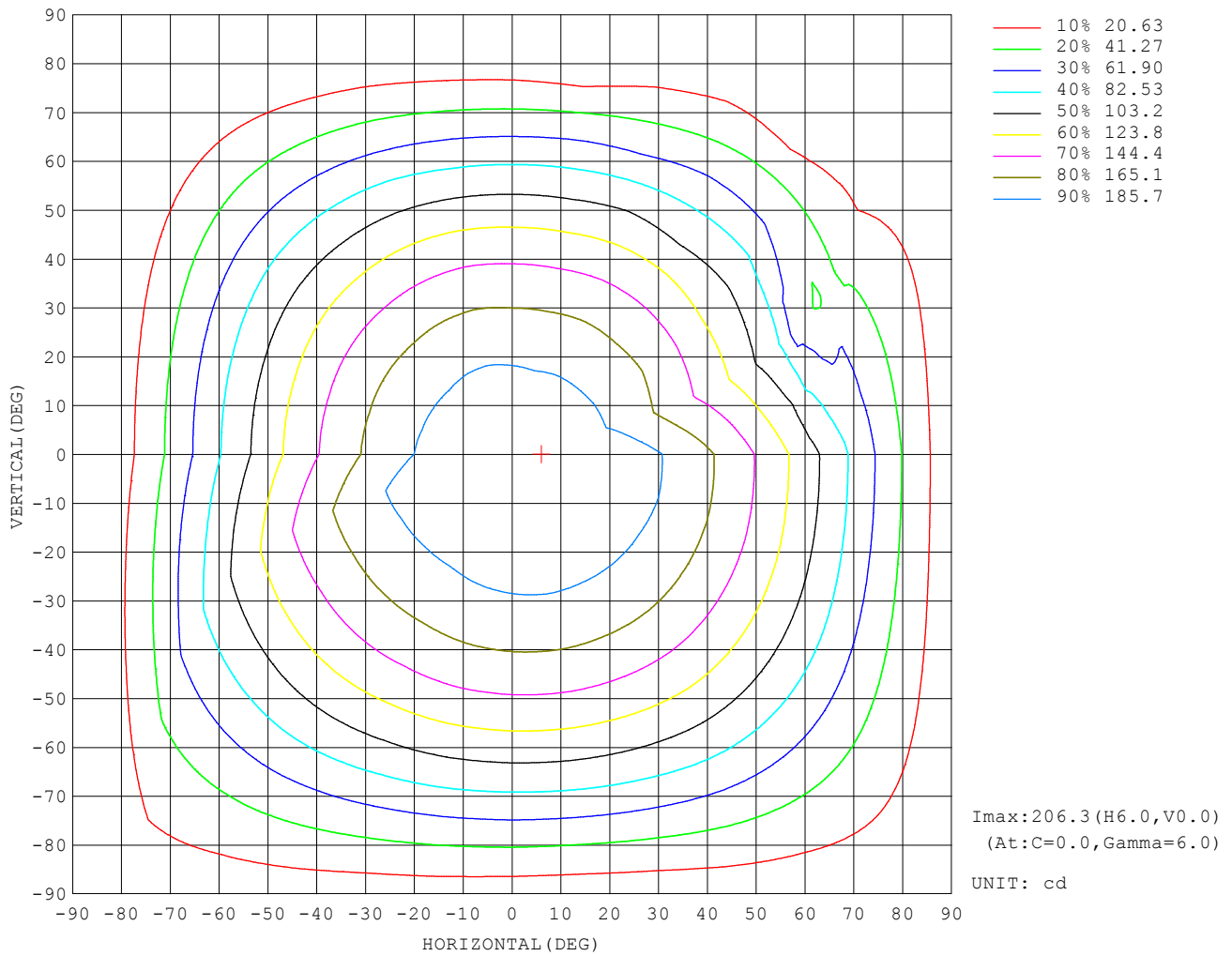
UTILIZATION FACTORS TABLE

REFLECTANCE										
Ceiling	0.8	0.8	0.8	0.7	0.7	0.7	0.5	0.5	0.5	0
Walls	0.7	0.5	0.3	0.7	0.5	0.3	0.7	0.5	0.3	0
Working plane	0.2	0.2	0.2	0.2	0.2	0.2	0.2	0.2	0.2	0
ROOM INDEX	UTILIZATION FACTORS (PERCENT) $k(RI) \times RCR = 5$									
$k = 0.60$	56	44	37	55	44	37	54	43	37	30
0.80	66	54	47	65	54	46	63	53	46	39
1.00	74	63	56	73	62	55	71	64	55	47
1.25	82	71	63	80	70	63	77	68	62	54
1.50	87	76	69	85	75	69	82	73	67	60
2.00	94	85	78	92	83	77	88	81	76	67
2.50	98	90	83	95	88	82	91	85	80	71
3.00	101	94	88	99	92	87	94	89	85	76
4.00	105	99	94	103	97	93	98	94	90	80
5.00	108	103	98	105	100	97	100	97	93	84
ROOM INDEX	UF (total)									Direct
According to DIN EN 13032-2 2004			Suspended				SHRNOM = 1.25			

C Range: 0 - 360DEG
 C Interval: 15.0DEG
 Test Speed: HIGH
 Temperature: 25.3°C
 Operators: DAMIN
 Test Date: 2023-08-07

Range: 0 - 180DEG
 Interval: 1.0DEG
 Test System: EVERFINE GO-2000B_V1 SYSTEM V2.00.471
 Humidity: 65.0%
 Test Distance: 4.880m [K=1.0000]
 Remarks:

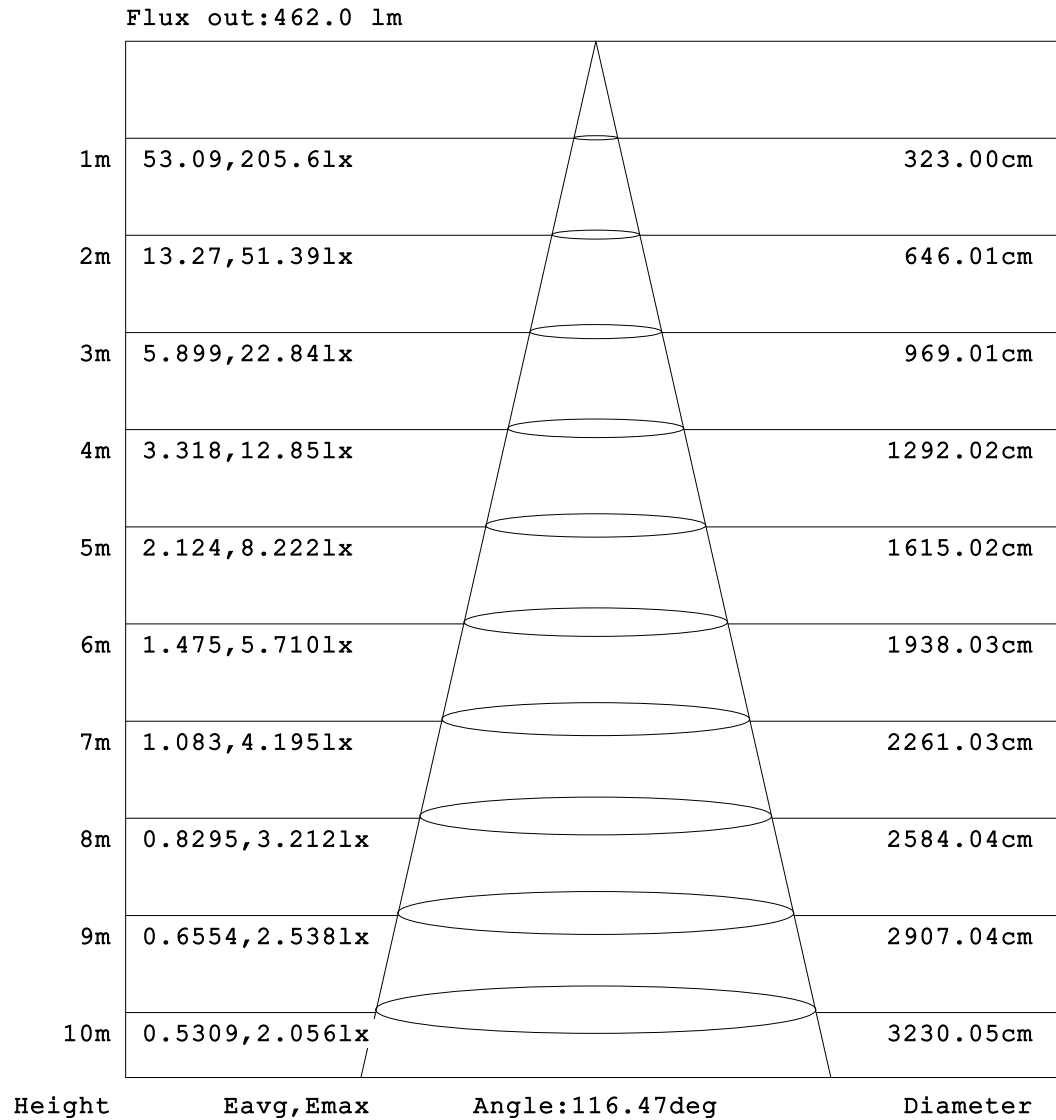
ISOCANDELA DIAGRAM



C Range: 0 - 360DEG
 C Interval: 15.0DEG
 Test Speed: HIGH
 Temperature: 25.3°C
 Operators: DAMIN
 Test Date: 2023-08-07

Range: 0 - 180DEG
 Interval: 1.0DEG
 Test System: EVERFINE GO-2000B_V1 SYSTEM V2.00.471
 Humidity: 65.0%
 Test Distance: 4.880m [K=1.0000]
 Remarks:

AAI Figure

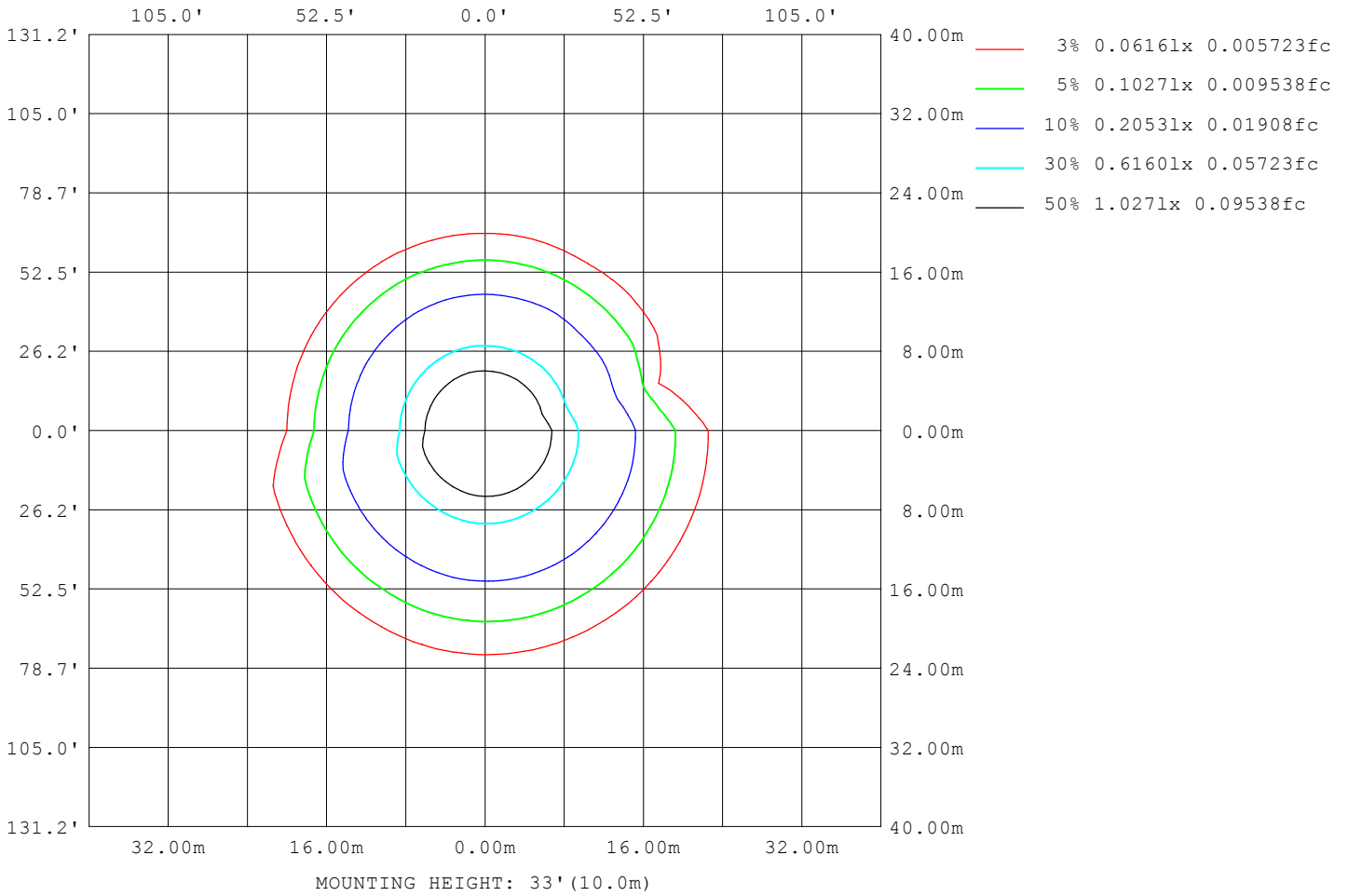


Note:The Curves indicate the illuminated area and the average illumination when the luminaire is at different distance.

C Range: 0 - 360DEG
 C Interval: 15.0DEG
 Test Speed: HIGH
 Temperature:25.3°C
 Operators:DAMIN
 Test Date:2023-08-07

Range: 0 - 180DEG
 Interval: 1.0DEG
 Test System:EVERFINE GO-2000B_V1 SYSTEM V2.00.471
 Humidity:65.0%
 Test Distance:4.880m [K=1.0000]
 Remarks:

ISOLUX DIAGRAM



C Range: 0 - 360DEG
 C Interval: 15.0DEG
 Test Speed: HIGH
 Temperature: 25.3°C
 Operators: DAMIN
 Test Date: 2023-08-07

Range: 0 - 180DEG
 Interval: 1.0DEG
 Test System: EVERFINE GO-2000B_V1 SYSTEM V2.00.471
 Humidity: 65.0%
 Test Distance: 4.880m [K=1.0000]
 Remarks:

LED Avg.L Report

NAME: LED Strip	TYPE: Indoor lighting	WEIGHT: 20g
SPEC.: LED	DIM.: 500*8*1.2MM	SERIAL No.: 20230807001
MFR.: EVERFINE	SUR.: 500*8MM	Shielding Angle:

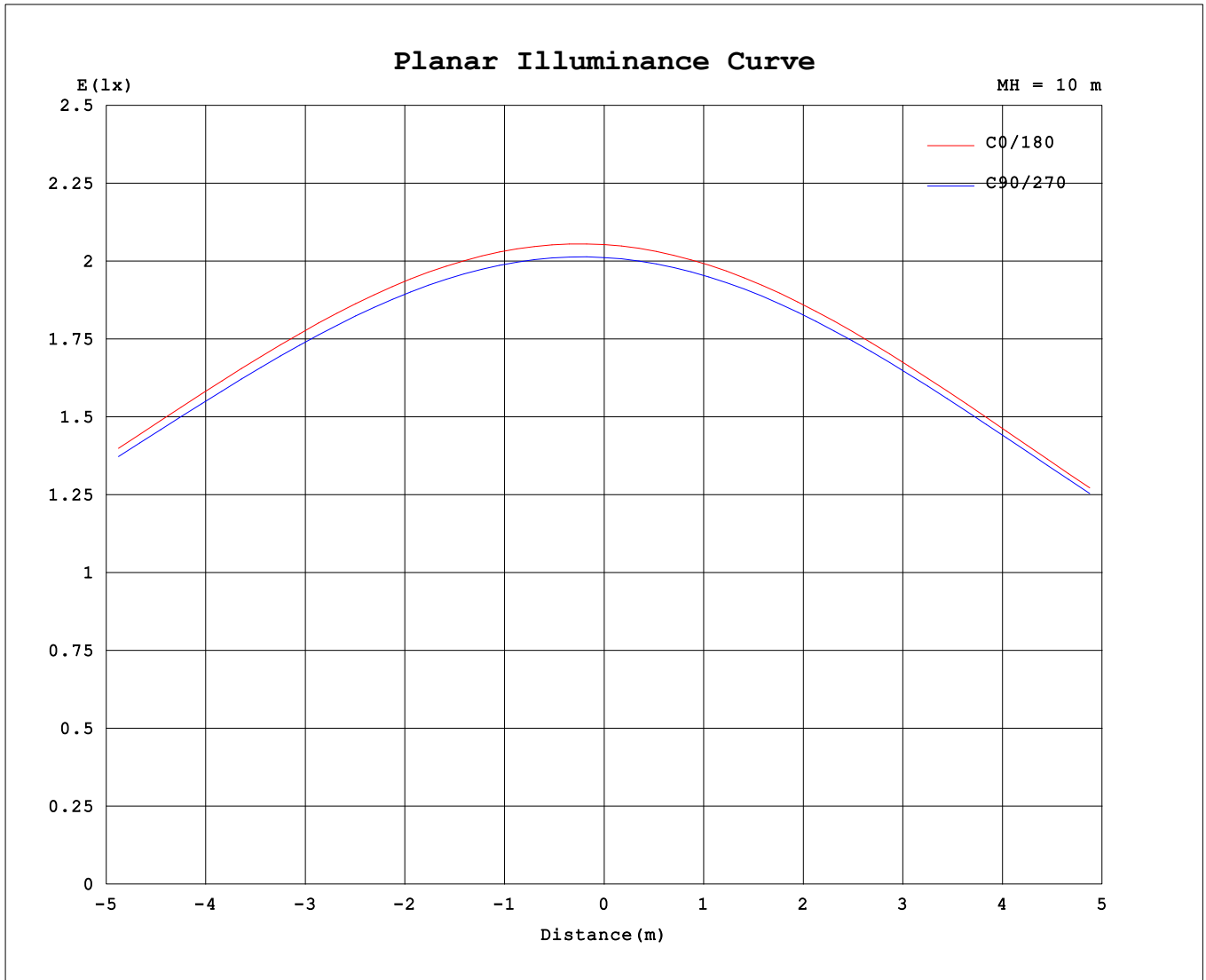
AvgL	cd/m2
L_0~180 (65) av	23593
L_0~180 (75) av	21123
L_0~180 (85) av	18878
L_90~270 (65) av	23550
L_90~270 (75) av	21120
L_90~270 (85) av	19257
L_45 (65) av	23439
L_45 (75) av	21076
L_45 (85) av	20092

Standard: GB/T 29293-2012

C Range: 0 - 360DEG
 C Interval: 15.0DEG
 Test Speed: HIGH
 Temperature:25.3℃
 Operators:DAMIN
 Test Date:2023-08-07

Range: 0 - 180DEG
 Interval: 1.0DEG
 Test System:EVERFINE GO-2000B_V1 SYSTEM V2.00.471
 Humidity:65.0%
 Test Distance:4.880m [K=1.0000]
 Remarks:

Planar Illuminance Curve



C Range: 0 - 360DEG
 C Interval: 15.0DEG
 Test Speed: HIGH
 Temperature: 25.3°C
 Operators: DAMIN
 Test Date: 2023-08-07

Range: 0 - 180DEG
 Interval: 1.0DEG
 Test System: EVERFINE GO-2000B_V1 SYSTEM V2.00.471
 Humidity: 65.0%
 Test Distance: 4.880m [K=1.0000]
 Remarks:

LUMINOUS DISTRIBUTION INTENSITY DATA

Table--1

UNIT: cd

C (DEG) \ □ (DEG)	0	15	30	45	60	75	90	105	120	135	150	165	180	195	210	225	240	255	270
0	205	204	203	202	202	202	201	200	200	201	202	203	205	204	203	202	202	202	201
5	206	206	204	203	203	203	202	201	200	201	202	204	203	202	200	200	200	200	199
10	206	205	203	203	203	203	201	200	199	200	201	202	199	197	196	196	196	196	195
15	203	203	202	201	201	200	199	198	197	197	198	199	193	191	191	190	191	191	190
20	200	200	198	198	197	197	195	194	193	192	193	195	186	184	184	183	184	184	183
25	194	194	193	192	192	192	190	189	187	187	187	188	177	176	175	175	176	176	175
30	187	188	186	186	185	185	184	182	180	180	180	181	167	166	165	165	166	166	165
35	178	179	178	178	177	177	175	174	172	171	171	172	156	155	154	154	155	155	154
40	168	169	169	168	168	167	166	164	162	161	160	161	143	142	142	142	142	143	142
45	156	158	157	157	156	156	155	153	151	150	149	150	129	128	128	128	129	129	128
50	143	145	144	145	144	144	142	141	139	137	136	136	114	114	114	113	114	114	113
55	129	130	130	130	130	130	129	127	125	124	122	121	98.2	97.6	97.8	97.5	98.1	97.6	97.2
60	113	114	114	115	114	114	114	112	110	109	107	106	81.2	80.8	81.0	80.6	81.1	80.2	80.1
65	96.2	97.2	97.5	98.0	97.7	97.6	97.2	96.1	93.9	92.5	91.2	90.6	63.3	63.2	63.3	63.1	62.9	62.5	62.0
70	78.1	79.1	79.2	79.9	79.6	79.9	79.7	78.8	76.8	75.8	74.3	74.0	45.4	45.3	45.5	45.1	45.0	44.2	43.7
75	59.4	60.1	60.2	60.8	60.6	61.1	61.5	60.8	59.1	58.1	56.9	56.8	28.1	27.9	28.1	27.6	27.7	26.7	26.0
80	40.5	41.1	41.2	41.6	41.6	42.1	43.1	42.7	41.5	40.5	39.6	39.6	13.1	12.9	13.1	12.8	12.8	12.0	10.9
85	22.8	23.4	23.2	23.8	23.6	24.1	25.3	25.6	24.6	24.3	23.4	23.5	3.57	3.45	3.58	3.47	3.42	2.78	1.52
90	8.77	9.22	9.03	9.52	9.29	9.59	10.9	11.4	11.2	11.6	10.6	10.7	1.35	1.41	1.48	1.40	1.14	0.77	0.73
95	1.72	1.83	1.88	2.08	1.93	1.80	1.65	3.85	4.41	4.75	4.23	4.26	0.92	0.92	0.87	0.77	0.77	0.76	0.76
100	0.96	1.01	1.03	0.96	0.77	0.71	0.73	1.77	2.99	3.33	3.06	3.46	0.84	0.83	0.85	0.85	0.86	0.85	0.87
105	0.76	0.75	0.74	0.72	0.72	0.75	0.79	0.74	2.33	2.81	2.39	3.19	0.96	0.96	0.97	0.97	0.98	0.99	1.01
110	0.80	0.81	0.81	0.82	0.83	0.86	0.90	0.83	0.90	2.59	2.43	3.24	1.09	1.09	1.10	1.10	1.12	1.12	1.15
115	0.92	0.93	0.93	0.95	0.94	0.98	0.97	0.95	0.94	1.44	2.38	2.90	1.22	1.21	1.23	1.23	1.25	1.25	1.28
120	1.05	1.06	1.05	1.07	1.08	1.10	1.10	1.08	1.06	1.09	1.51	2.60	1.34	1.34	1.36	1.36	1.37	1.38	1.41
125	1.17	1.18	1.18	1.20	1.20	1.23	1.21	1.21	1.19	1.20	1.29	1.86	1.47	1.46	1.48	1.48	1.50	1.51	1.53
130	1.29	1.30	1.30	1.32	1.32	1.34	1.33	1.33	1.31	1.32	1.35	1.41	1.59	1.59	1.60	1.60	1.62	1.63	1.66
135	1.42	1.43	1.43	1.45	1.45	1.47	1.46	1.45	1.43	1.45	1.46	1.46	1.70	1.70	1.72	1.72	1.74	1.75	1.77
140	1.54	1.56	1.56	1.57	1.58	1.60	1.58	1.58	1.56	1.58	1.58	1.57	1.82	1.82	1.83	1.83	1.85	1.86	1.88
145	1.66	1.69	1.68	1.70	1.70	1.72	1.70	1.70	1.69	1.71	1.69	1.71	1.93	1.93	1.94	1.95	1.96	1.97	1.99
150	1.78	1.81	1.80	1.82	1.81	1.83	1.81	1.82	1.82	1.84	1.83	1.82	2.04	2.03	2.05	2.05	2.06	2.07	2.09
155	1.90	1.93	1.92	1.93	1.93	1.95	1.93	1.93	1.96	1.97	1.96	1.91	2.15	2.13	2.14	2.14	2.16	2.17	2.19
160	2.02	2.04	2.03	2.04	2.04	2.05	2.03	2.04	2.08	2.09	2.09	2.09	2.25	2.22	2.24	2.23	2.25	2.25	2.27
165	2.13	2.15	2.13	2.14	2.13	2.15	2.13	2.14	2.21	2.22	2.22	2.26	2.33	2.30	2.31	2.30	2.32	2.32	2.35
170	2.23	2.24	2.23	2.23	2.23	2.25	2.29	2.34	2.35	2.36	2.35	2.41	2.40	2.37	2.38	2.37	2.38	2.38	2.41
175	2.32	2.33	2.30	2.31	2.31	2.33	2.36	2.43	2.47	2.51	2.51	2.60	2.43	2.41	2.41	2.41	2.41	2.42	2.44
180	2.39	2.39	2.37	2.37	2.37	2.39	2.42	2.47	2.54	2.61	2.70	2.83	2.40	2.39	2.38	2.38	2.38	2.40	2.40

C Range: 0 - 360DEG
 C Interval: 15.0DEG
 Test Speed: HIGH
 Temperature: 25.3°C
 Operators: DAMIN
 Test Date: 2023-08-07

□ Range: 0 - 180DEG
 □ Interval: 1.0DEG
 Test System: EVERFINE GO-2000B_V1 SYSTEM V2.00.471
 Humidity: 65.0%
 Test Distance: 4.880m [K=1.0000]
 Remarks:

LUMINOUS DISTRIBUTION INTENSITY DATA

Table--2

UNIT: cd

C (DEG) \ □ (DEG)	285	300	315	330	345														
0	200	200	201	202	203														
5	198	198	199	200	201														
10	194	195	195	197	198														
15	189	190	191	191	192														
20	182	184	184	185	186														
25	174	176	176	177	176														
30	165	167	167	167	165														
35	154	155	155	156	153														
40	142	143	144	143	141														
45	128	129	130	128	128														
50	113	115	113	114	112														
55	97.2	98.9	96.4	99.2	92.6														
60	80.0	80.0	80.5	81.8	65.3														
65	62.1	60.6	63.4	62.3	42.4														
70	43.3	43.9	44.6	45.4	45.9														
75	22.8	26.9	28.0	22.2	29.5														
80	10.7	13.1	11.1	14.6	14.2														
85	2.84	3.95	4.47	4.81	4.45														
90	0.79	1.24	1.68	1.84	1.84														
95	0.77	0.82	0.93	1.07	1.34														
100	0.87	0.89	0.93	1.00	1.22														
105	1.01	1.01	1.04	1.09	1.29														
110	1.14	1.15	1.16	1.22	1.42														
115	1.28	1.28	1.29	1.35	1.61														
120	1.41	1.41	1.43	1.49	1.84														
125	1.54	1.54	1.56	1.65	2.13														
130	1.66	1.68	1.70	1.81	2.42														
135	1.78	1.80	1.84	2.02	2.65														
140	1.90	1.92	1.97	2.24	2.88														
145	2.01	2.04	2.11	2.44	3.05														
150	2.12	2.15	2.22	2.43	2.76														
155	2.22	2.25	2.32	2.45	2.79														
160	2.31	2.35	2.42	2.54	2.90														
165	2.39	2.45	2.51	2.64	3.02														
170	2.46	2.53	2.59	2.72	3.10														
175	2.50	2.57	2.64	2.76	3.09														
180	2.49	2.54	2.62	2.69	2.85														

C Range: 0 - 360DEG
 C Interval: 15.0DEG
 Test Speed: HIGH
 Temperature:25.3°C
 Operators:DAMIN
 Test Date:2023-08-07

□ Range: 0 - 180DEG
 □ Interval: 1.0DEG
 Test System:EVERFINE GO-2000B_V1 SYSTEM V2.00.471
 Humidity:65.0%
 Test Distance:4.880m [K=1.0000]
 Remarks: