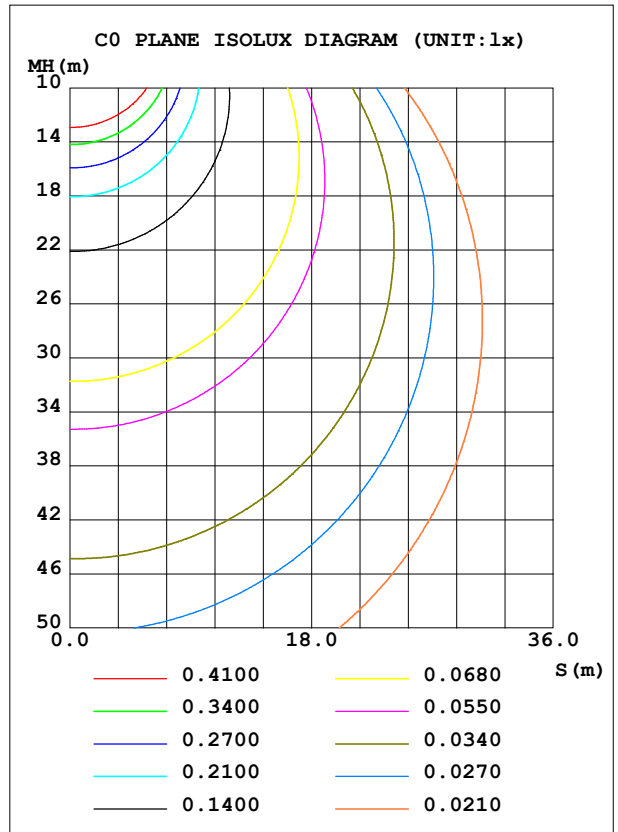
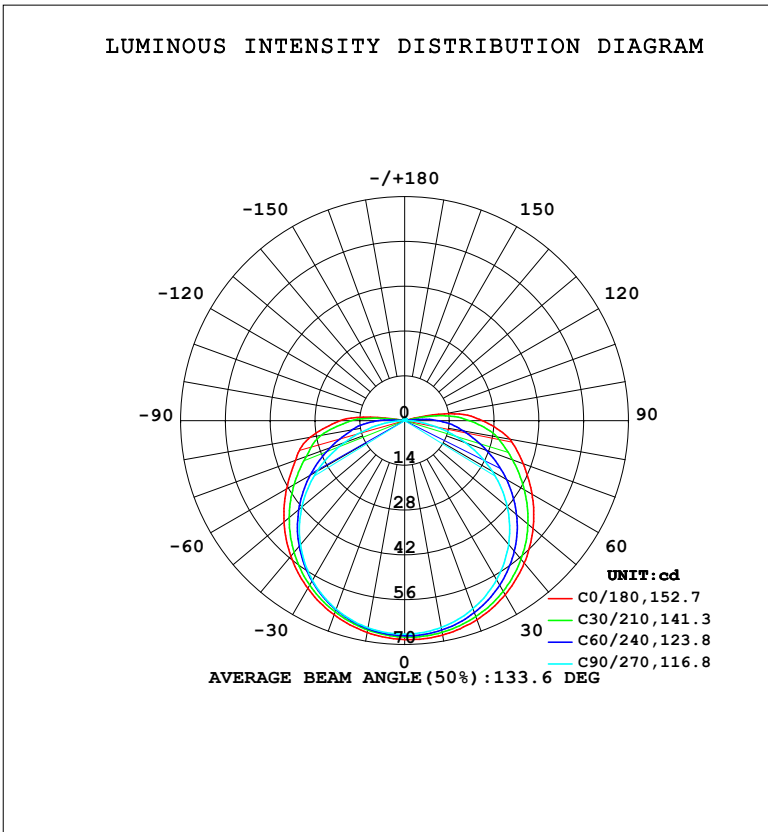


LUMINAIRE PHOTOMETRIC TEST REPORT

NAME: LED Strip	TYPE: Indoor lighting	WEIGHT: 20g
SPEC.: COB LED	DIM.: 500*5*1.9MM	SERIAL No.: 20240125013
MFR.: Hide-a-lite	SUR.: 500*5MM	Shielding Angle:

DATA OF LAMP		PHOTOMETRIC DATA			
MODEL: GO-24 (WCP) (05) -UR-SL-EP		Imax (cd)	68.49	S/MH (C0/180)	1.32
NOMINAL POWER (W)	2.3859	LOR (%)	100.0	S/MH (C90/270)	1.28
RATED VOLTAGE (V)	DC 24V	TOTAL FLUX (lm)	258.69	η UP, DN (C0-180)	2.5, 47.6
NOMINAL FLUX (lm)	258.688	CIE CLASS	DIRECT	η UP, DN (C180-360)	2.3, 47.5
LAMPS INSIDE	1	η up (%)	4.9	CIBSE SHR NOM	1.50
TEST VOLTAGE (V)	DC 24V	η down (%)	95.1	CIBSE SHR MAX	1.50



C Range: 0 - 360DEG
 C Interval: 15.0DEG
 Test Speed: HIGH
 Temperature: 25.3°C
 Operators: DAMIN
 Test Date: 2024-01-27

γ Range: 0 - 180DEG
 γ Interval: 1.0DEG
 Test System: EVERFINE GO-2000B_V1 SYSTEM V2.00.471
 Humidity: 65.0%
 Test Distance: 4.880m [K=1.0000]
 Remarks:

ZONAL FLUX DIAGRAM

ZONAL FLUX DIAGRAM:

γ	C0	C45	C90	C135	C180	C225	C270	C315	γ	Φ zone	Φ total	%lum,lamp
10	68.05	66.85	65.65	65.70	67.25	66.19	65.76	66.63	0- 10	6.391	6.391	2.47,2.47
20	66.20	64.49	62.55	62.66	64.59	63.21	62.72	64.48	10- 20	18.47	24.87	9.61,9.61
30	62.84	60.53	57.49	58.07	60.58	58.63	57.67	60.70	20- 30	28.56	53.43	20.7,20.7
40	58.18	54.98	50.56	52.01	55.36	52.53	50.70	55.33	30- 40	35.58	89.00	34.4,34.4
50	52.44	48.11	41.90	44.76	49.25	45.21	41.96	48.60	40- 50	38.81	127.8	49.4,49.4
60	45.99	40.23	31.64	36.76	42.63	37.14	31.61	40.86	50- 60	38.07	165.9	64.1,64.1
70	39.44	32.02	20.15	28.92	36.35	28.97	19.98	32.71	60- 70	33.80	199.7	77.2,77.2
80	33.32	24.60	8.688	22.37	29.93	22.40	8.346	25.21	70- 80	27.38	227.1	87.8,87.8
90	24.33	15.88	0.8279	13.09	20.21	12.90	0.5860	13.34	80- 90	19.07	246.1	95.1,95.1
100	12.63	3.483	0.2890	0.6116	2.667	0.5177	0.3004	5.765	90-100	8.705	254.8	98.5,98.5
110	0.6071	0.4520	0.3595	0.4307	0.5273	0.4316	0.3796	0.5380	100-110	1.383	256.2	99,99
120	0.5110	0.4878	0.4399	0.5006	0.5530	0.4934	0.4645	0.4935	110-120	0.4739	256.7	99.2,99.2
130	0.5692	0.5658	0.5260	0.5786	0.6112	0.5679	0.5449	0.5563	120-130	0.4747	257.2	99.4,99.4
140	0.6262	0.6333	0.6017	0.6461	0.6635	0.6343	0.6205	0.6238	130-140	0.4631	257.6	99.6,99.6
150	0.6844	0.6973	0.6762	0.7066	0.7159	0.6949	0.6915	0.6821	140-150	0.4155	258.1	99.8,99.8
160	0.7449	0.7555	0.7403	0.7636	0.7718	0.7519	0.7555	0.7437	150-160	0.3345	258.4	99.9,99.9
170	0.8008	0.8067	0.7985	0.8114	0.8207	0.8020	0.8102	0.7962	160-170	0.2205	258.6	100,100
180	0.8462	0.8346	0.8334	0.8334	0.8462	0.8334	0.8334	0.8323	170-180	0.0783	258.7	100,100
DEG	LUMINOUS INTENSITY:cd									UNIT:lm		

Conical surface Flux(90deg): 108.25 lm

%lum = 41.8%

%lamp = 41.8%

Conical surface Flux(120deg): 165.88 lm

%lum = 64.1%

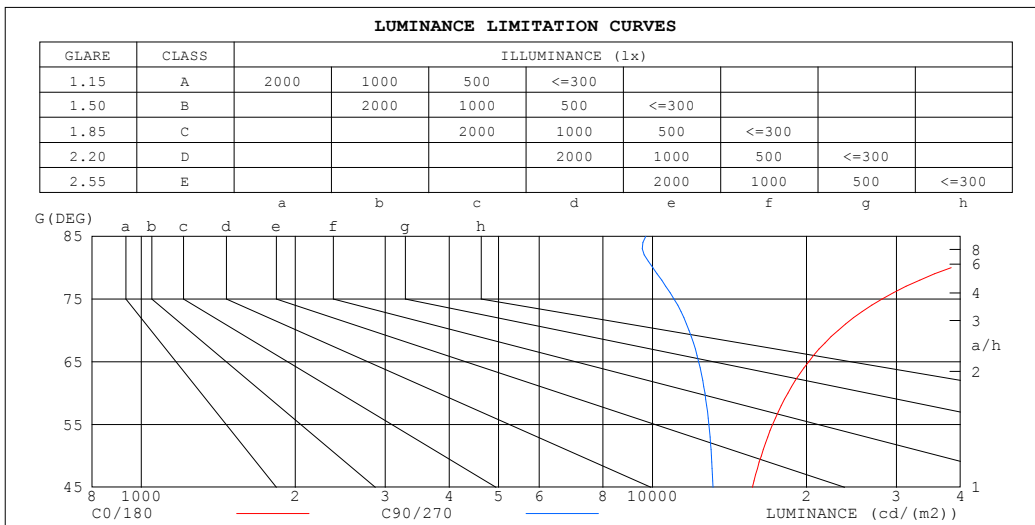
%lamp = 64.1%

C Range: 0 - 360DEG
 C Interval: 15.0DEG
 Test Speed: HIGH
 Temperature:25.3°C
 Operators:DAMIN
 Test Date:2024-01-27

γ Range: 0 - 180DEG
 γ Interval: 1.0DEG
 Test System:EVERFINE GO-2000B_V1 SYSTEM V2.00.471
 Humidity:65.0%
 Test Distance:4.880m [K=1.0000]
 Remarks:

LUMINANCE LIMITATION CURVES

NAME: LED Strip	TYPE: Indoor lighting	WEIGHT: 20g
SPEC.: COB LED	DIM.: 500*5*1.9MM	SERIAL No.: 20240125013
MFR.: Hide-a-lite	SUR.: 500*5MM	Shielding Angle:



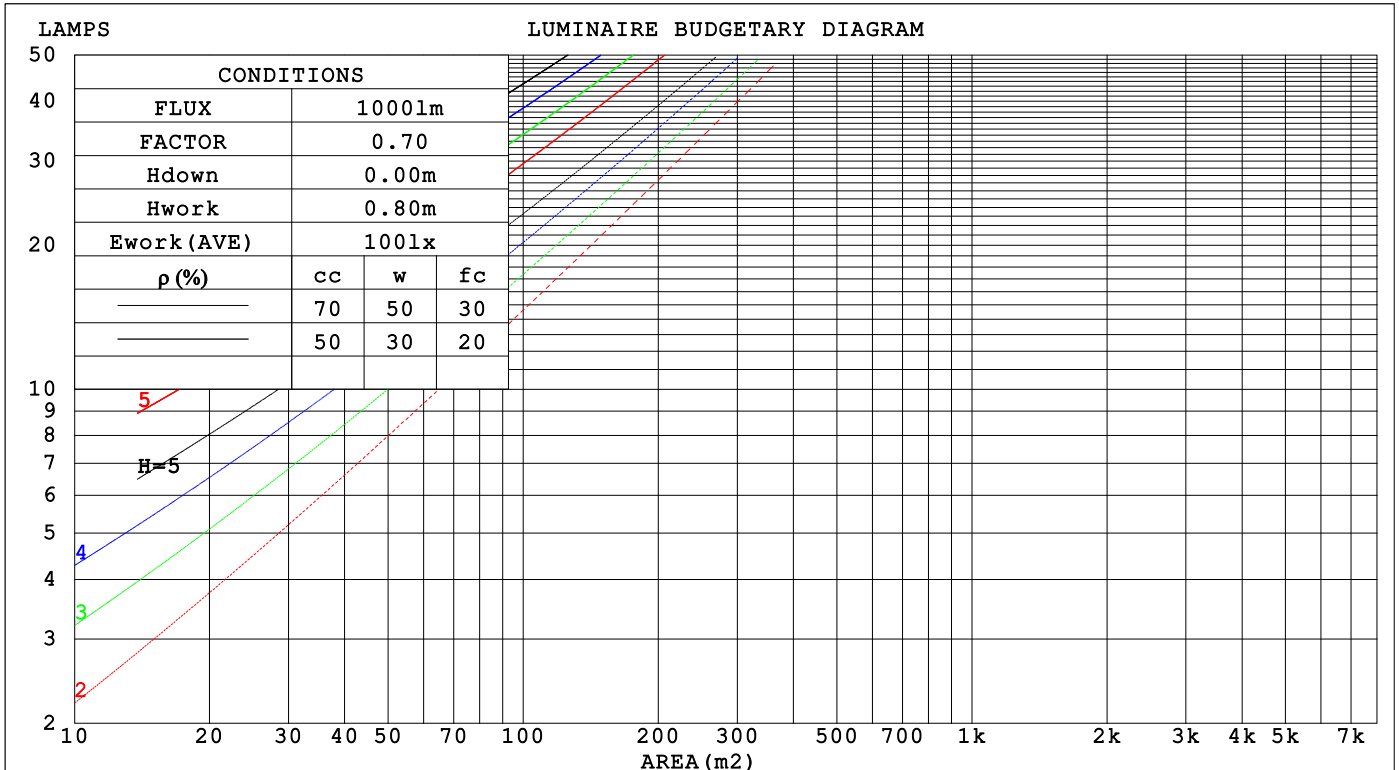
C Range: 0 - 360DEG
 C Interval: 15.0DEG
 Test Speed: HIGH
 Temperature: 25.3°C
 Operators: DAMIN
 Test Date: 2024-01-27

γ Range: 0 - 180DEG
 γ Interval: 1.0DEG
 Test System: EVERFINE GO-2000B_V1 SYSTEM V2.00.471
 Humidity: 65.0%
 Test Distance: 4.880m [K=1.0000]
 Remarks:

CU AND LUMINAIRE BUDGETARY ESTIMATE DIAGRAM

NAME: LED Strip	TYPE: Indoor lighting	WEIGHT: 20g
SPEC.: COB LED	DIM.: 500*5*1.9MM	SERIAL No.: 20240125013
MFR.: Hide-a-lite	SUR.: 500*5MM	Shielding Angle:

pcc	80%			70%			50%			30%			10%			0
p _w	50%	30%	10%	50%	30%	10%	50%	30%	10%	50%	30%	10%	50%	30%	10%	0
p _{fc}	20%			20%			20%			20%			20%			0
RCR	RCR:Room Cavity Ratio						Coefficients of Utilization(CU)									
0.0	1.18	1.18	1.18	1.15	1.15	1.15	1.08	1.08	1.08	1.03	1.03	1.03	.98	.98	.98	.95
1.0	.99	.93	.88	.96	.91	.86	.90	.86	.83	.86	.82	.79	.81	.78	.76	.73
2.0	.84	.76	.70	.82	.75	.68	.77	.71	.66	.73	.68	.64	.69	.65	.61	.59
3.0	.73	.64	.56	.71	.63	.56	.67	.60	.54	.64	.58	.52	.60	.55	.51	.48
4.0	.64	.54	.47	.62	.53	.46	.59	.51	.45	.56	.50	.44	.53	.48	.43	.40
5.0	.57	.47	.40	.56	.46	.40	.53	.45	.39	.50	.43	.38	.48	.42	.37	.34
6.0	.51	.41	.35	.50	.41	.34	.47	.39	.34	.45	.38	.33	.43	.37	.32	.30
7.0	.46	.37	.30	.45	.36	.30	.43	.35	.29	.41	.34	.29	.39	.33	.28	.26
8.0	.42	.33	.27	.41	.33	.27	.39	.32	.26	.38	.31	.26	.36	.30	.25	.23
9.0	.38	.30	.24	.38	.29	.24	.36	.29	.23	.35	.28	.23	.33	.27	.23	.21
10.0	.35	.27	.22	.35	.27	.22	.33	.26	.21	.32	.25	.21	.31	.25	.21	.19



C Range: 0 - 360DEG
 C Interval: 15.0DEG
 Test Speed: HIGH
 Temperature: 25.3°C
 Operators: DAMIN
 Test Date: 2024-01-27

γ Range: 0 - 180DEG
 γ Interval: 1.0DEG
 Test System: EVERFINE GO-2000B_V1 SYSTEM V2.00.471
 Humidity: 65.0%
 Test Distance: 4.880m [K=1.0000]
 Remarks:

WEC AND CCEC

NAME: LED Strip	TYPE: Indoor lighting	WEIGHT: 20g
SPEC.: COB LED	DIM.: 500*5*1.9MM	SERIAL No.: 20240125013
MFR.: Hide-a-lite	SUR.: 500*5MM	Shielding Angle:

ρ_{CC}	80%			70%			50%			30%			10%			0
ρ_w	50%	30%	10%	50%	30%	10%	50%	30%	10%	50%	30%	10%	50%	30%	10%	0
ρ_{fc}	20%			20%			20%			20%			20%			0
RCR	RCR:Room Cavity Ratio						Wall Exitance Coefficients(WEC)									
0.0																
1.0	.390	.222	.070	.381	.217	.069	.365	.209	.067	.350	.202	.065	.336	.195	.063	
2.0	.340	.186	.057	.332	.183	.056	.317	.177	.055	.304	.170	.053	.291	.165	.052	
3.0	.303	.161	.048	.296	.158	.048	.283	.153	.047	.271	.148	.045	.259	.144	.044	
4.0	.273	.142	.042	.267	.139	.041	.255	.135	.040	.244	.131	.040	.234	.127	.039	
5.0	.248	.126	.037	.242	.124	.036	.232	.121	.036	.222	.117	.035	.213	.114	.034	
6.0	.227	.114	.033	.222	.112	.032	.213	.109	.032	.204	.106	.031	.196	.103	.031	
7.0	.209	.104	.029	.205	.102	.029	.197	.099	.029	.189	.097	.028	.181	.094	.028	
8.0	.194	.095	.027	.190	.094	.026	.183	.091	.026	.175	.089	.026	.169	.087	.025	
9.0	.181	.088	.024	.177	.086	.024	.170	.084	.024	.164	.082	.024	.158	.080	.023	
10.0	.169	.081	.023	.166	.080	.022	.160	.078	.022	.154	.076	.022	.148	.074	.021	

ρ_{CC}	80%			70%			50%			30%			10%			0
ρ_w	50%	30%	10%	50%	30%	10%	50%	30%	10%	50%	30%	10%	50%	30%	10%	0
ρ_{fc}	20%			20%			20%			20%			20%			0
RCR	RCR:Room Cavity Ratio						Ceiling Cavity Exitance Coefficients(CCEC)									
0.0	.227	.227	.227	.194	.194	.194	.133	.133	.133	.076	.076	.076	.024	.024	.024	
1.0	.223	.193	.165	.191	.165	.142	.131	.114	.098	.075	.066	.057	.024	.021	.019	
2.0	.216	.169	.130	.185	.146	.112	.127	.101	.078	.073	.059	.046	.023	.019	.015	
3.0	.209	.152	.107	.179	.131	.093	.123	.091	.065	.071	.053	.038	.023	.017	.013	
4.0	.201	.139	.093	.172	.120	.081	.118	.084	.057	.068	.049	.034	.022	.016	.011	
5.0	.193	.129	.083	.165	.112	.072	.114	.078	.051	.066	.046	.030	.021	.015	.010	
6.0	.185	.121	.075	.159	.105	.066	.110	.073	.046	.064	.043	.028	.021	.014	.009	
7.0	.178	.114	.070	.153	.099	.061	.106	.069	.043	.061	.041	.026	.020	.013	.009	
8.0	.171	.109	.066	.147	.094	.057	.102	.066	.041	.059	.039	.024	.019	.013	.008	
9.0	.164	.104	.063	.142	.090	.055	.098	.063	.039	.057	.037	.023	.019	.012	.008	
10.0	.158	.099	.060	.136	.086	.053	.095	.061	.037	.055	.036	.022	.018	.012	.007	

C Range: 0 - 360DEG
 C Interval: 15.0DEG
 Test Speed: HIGH
 Temperature:25.3°C
 Operators:DAMIN
 Test Date:2024-01-27

γ Range: 0 - 180DEG
 γ Interval: 1.0DEG
 Test System:EVERFINE GO-2000B_V1 SYSTEM V2.00.471
 Humidity:65.0%
 Test Distance:4.880m [K=1.0000]
 Remarks:

UGR(Unified Glare Rating) Table

NAME: LED Strip		TYPE: Indoor lighting				WEIGHT: 20g				
SPEC.: COB LED		DIM.: 500*5*1.9MM				SERIAL No.: 20240125013				
MFR.: Hide-a-lite		SUR.: 500*5MM				Shielding Angle:				
ceiling/cavity	0.7	0.7	0.5	0.5	0.3	0.7	0.7	0.5	0.5	0.3
walls	0.5	0.3	0.5	0.3	0.3	0.5	0.3	0.5	0.3	0.3
working plane	0.2	0.2	0.2	0.2	0.2	0.2	0.2	0.2	0.2	0.2
Room dimensions	Viewed crosswise					Viewed endwise				
x = 2H y = 2H	27.5	29.1	27.9	29.4	29.7	26.0	27.6	26.4	27.9	28.2
3H	30.1	31.6	30.5	31.9	32.3	27.7	29.1	28.0	29.4	29.8
4H	31.6	33.0	32.0	33.3	33.7	28.3	29.7	28.7	30.1	30.4
6H	33.2	34.5	33.6	34.9	35.2	28.8	30.1	29.2	30.5	30.9
8H	34.0	35.3	34.4	35.7	36.1	29.0	30.3	29.4	30.6	31.0
12H	35.0	36.2	35.4	36.6	37.0	29.1	30.3	29.5	30.7	31.1
4H 2H	28.2	29.6	28.6	29.9	30.3	27.1	28.5	27.5	28.8	29.2
3H	31.0	32.2	31.4	32.6	33.1	29.0	30.2	29.4	30.6	31.0
4H	32.6	33.8	33.1	34.2	34.6	29.8	30.9	30.3	31.4	31.8
6H	34.5	35.5	34.9	35.9	36.4	30.5	31.5	31.0	31.9	32.4
8H	35.5	36.4	36.0	36.9	37.4	30.7	31.7	31.2	32.1	32.6
12H	36.6	37.4	37.1	37.9	38.4	30.9	31.8	31.4	32.3	32.8
8H 4H	33.0	34.0	33.5	34.5	35.0	30.8	31.7	31.2	32.2	32.7
6H	35.2	36.0	35.7	36.5	37.0	31.8	32.6	32.3	33.1	33.6
8H	36.4	37.1	36.9	37.6	38.2	32.2	33.0	32.8	33.5	34.1
12H	37.7	38.4	38.3	38.9	39.5	32.6	33.3	33.2	33.8	34.4
12H 4H	33.1	34.0	33.6	34.4	35.0	31.1	31.9	31.6	32.4	32.9
6H	35.3	36.0	35.8	36.5	37.1	32.3	33.0	32.8	33.6	34.1
8H	36.6	37.3	37.2	37.8	38.4	32.9	33.6	33.5	34.1	34.7
Variations with the observer position at spacings(CIE Pub.117):										
S = 1.0H	+ 0.1 / - 0.1					+ 0.1 / - 0.1				
1.5H	+ 0.2 / - 0.3					+ 0.2 / - 0.3				
2.0H	+ 0.2 / - 0.4					+ 0.2 / - 0.4				

CIE Pub.117, 258.7 lm Total Lamp Luminous Flux Correct (8log(F/F0) = -4.7)
 Area: 0.005 m2

C Range: 0 - 360DEG
 C Interval: 15.0DEG
 Test Speed: HIGH
 Temperature:25.3°C
 Operators:DAMIN
 Test Date:2024-01-27

γ Range: 0 - 180DEG
 γ Interval: 1.0DEG
 Test System:EVERFINE GO-2000B_V1 SYSTEM V2.00.471
 Humidity:65.0%
 Test Distance:4.880m [K=1.0000]
 Remarks:

UTILIZATION FACTORS TABLE

NAME: LED Strip	TYPE: Indoor lighting	WEIGHT: 20g
SPEC.: COB LED	DIM.: 500*5*1.9MM	SERIAL No.: 20240125013
MFR.: Hide-a-lite	SUR.: 500*5MM	Shielding Angle:

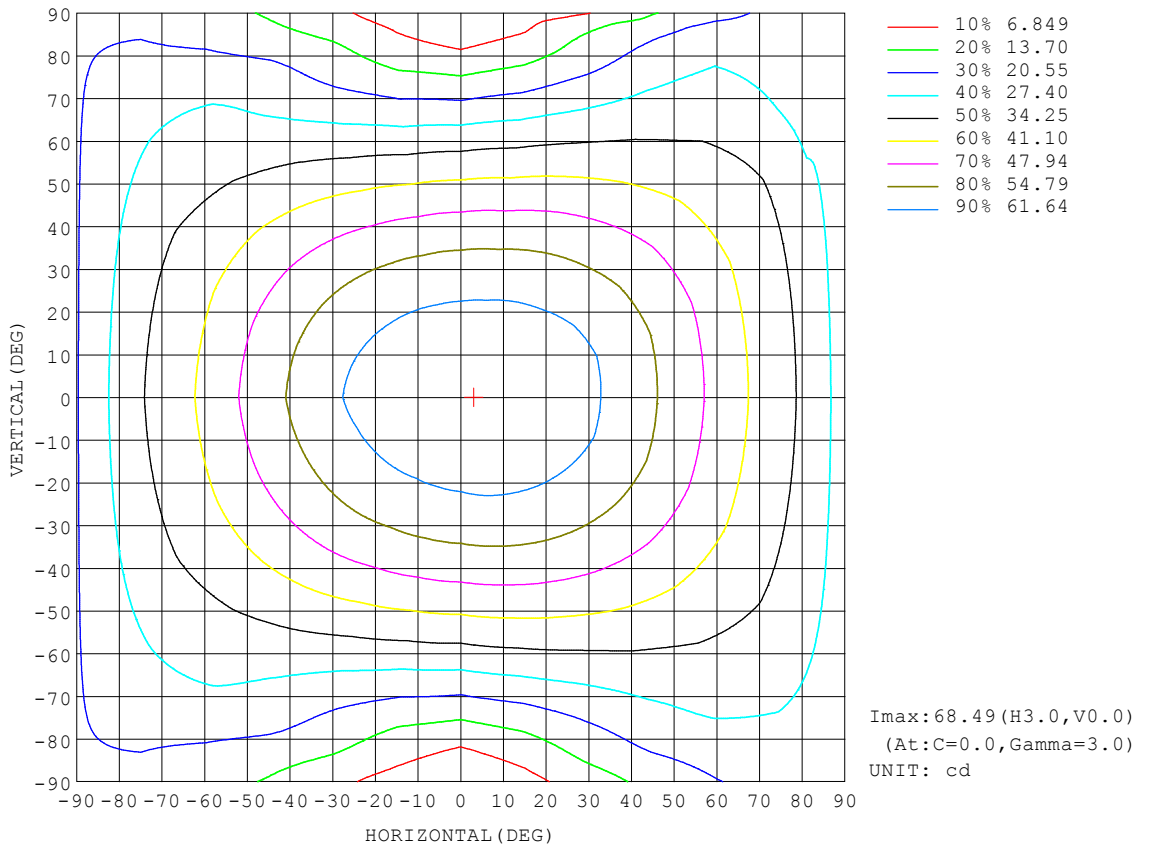
REFLECTANCE										
Ceiling	0.8	0.8	0.8	0.7	0.7	0.7	0.5	0.5	0.5	0
Walls	0.7	0.5	0.3	0.7	0.5	0.3	0.7	0.5	0.3	0
Working plane	0.2	0.2	0.2	0.2	0.2	0.2	0.2	0.2	0.2	0
ROOM INDEX	UTILIZATION FACTORS (PERCENT) $k(RI) \times RCR = 5$									
$k = 0.60$	52	39	32	51	39	32	49	38	32	25
0.80	61	48	40	60	48	40	58	47	40	32
1.00	69	56	48	68	56	48	65	57	47	39
1.25	76	64	56	74	63	55	71	61	54	46
1.50	81	69	61	79	68	60	76	66	59	50
2.00	88	78	70	86	76	69	82	74	67	58
2.50	93	83	75	90	81	74	86	78	72	62
3.00	96	88	80	94	86	79	89	82	77	67
4.00	101	93	87	98	91	86	93	87	83	72
5.00	104	97	92	101	95	90	95	91	86	75
ROOM INDEX	UF(total)									Direct
According to DIN EN 13032-2 2004			Suspended				SHRNOM = 1.25			

C Range: 0 - 360DEG
 C Interval: 15.0DEG
 Test Speed: HIGH
 Temperature: 25.3°C
 Operators: DAMIN
 Test Date: 2024-01-27

γ Range: 0 - 180DEG
 γ Interval: 1.0DEG
 Test System: EVERFINE GO-2000B_V1 SYSTEM V2.00.471
 Humidity: 65.0%
 Test Distance: 4.880m [K=1.0000]
 Remarks:

ISOCANDELA DIAGRAM

NAME: LED Strip	TYPE: Indoor lighting	WEIGHT: 20g
SPEC.: COB LED	DIM.: 500*5*1.9MM	SERIAL No.: 20240125013
MFR.: Hide-a-lite	SUR.: 500*5MM	Shielding Angle:

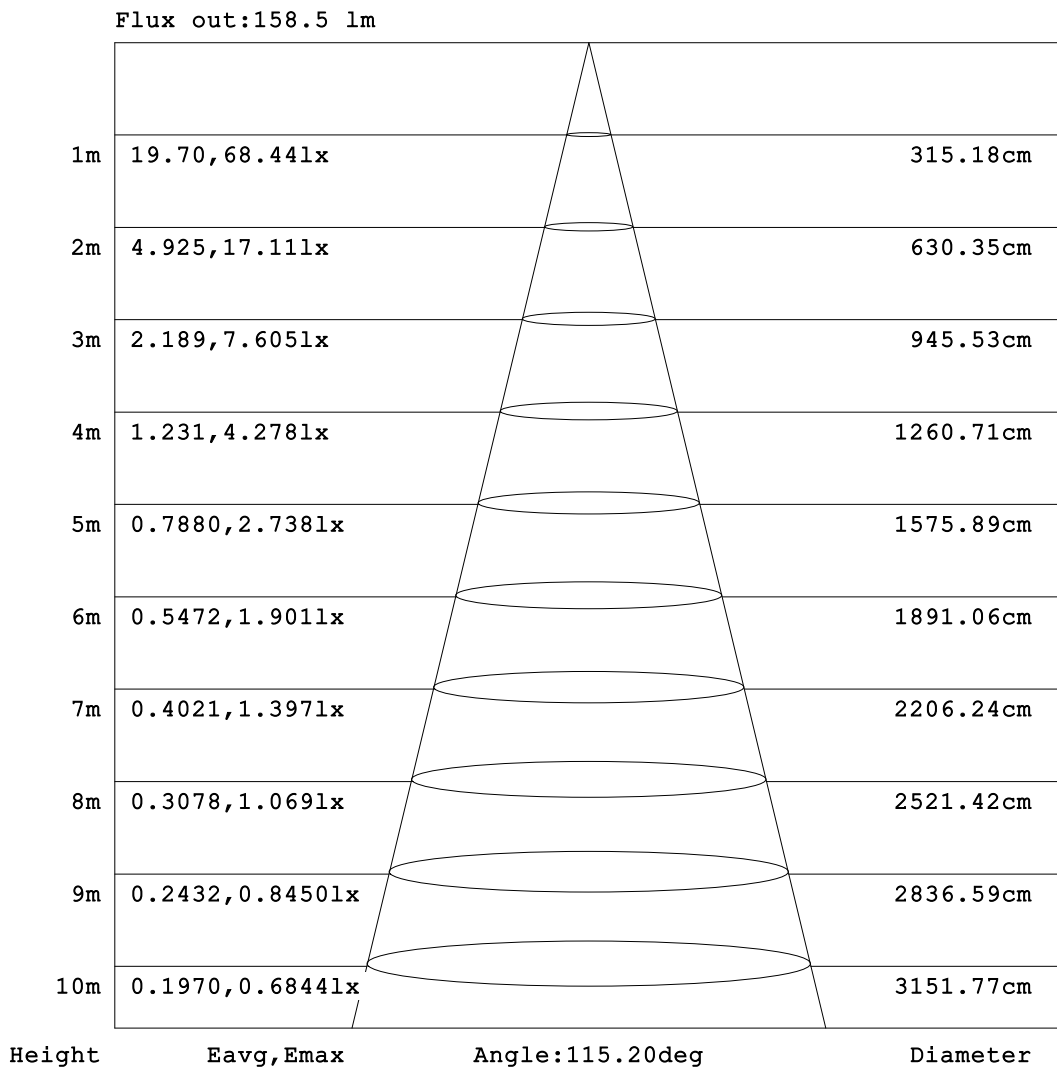


C Range: 0 - 360DEG
 C Interval: 15.0DEG
 Test Speed: HIGH
 Temperature: 25.3°C
 Operators: DAMIN
 Test Date: 2024-01-27

γ Range: 0 - 180DEG
 γ Interval: 1.0DEG
 Test System: EVERFINE GO-2000B_V1 SYSTEM V2.00.471
 Humidity: 65.0%
 Test Distance: 4.880m [K=1.0000]
 Remarks:

AAI Figure

NAME: LED Strip	TYPE: Indoor lighting	WEIGHT: 20g
SPEC.: COB LED	DIM.: 500*5*1.9MM	SERIAL No.: 20240125013
MFR.: Hide-a-lite	SUR.: 500*5MM	Shielding Angle:



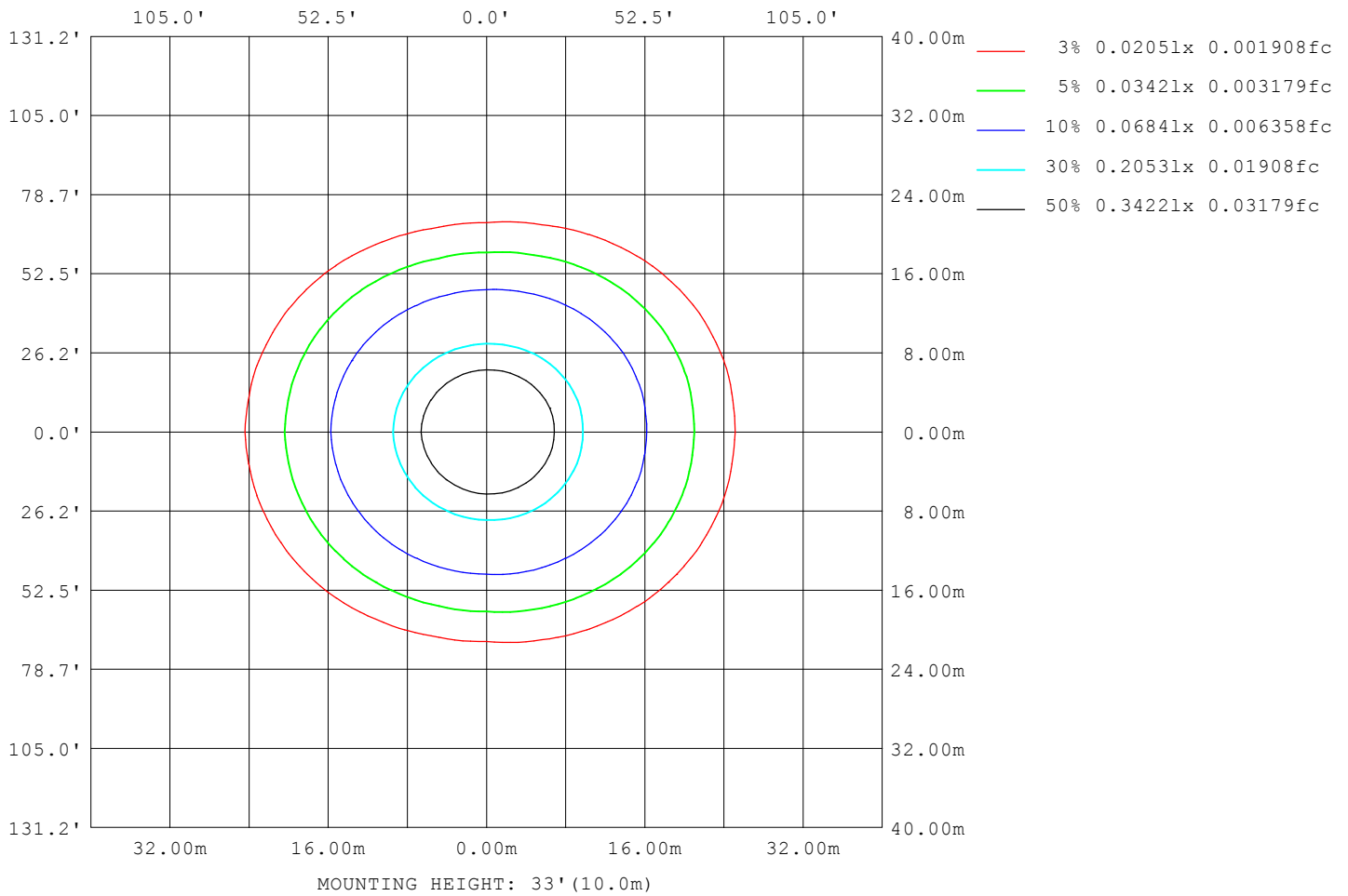
Note: The Curves indicate the illuminated area and the average illumination when the luminaire is at different distance.

C Range: 0 - 360DEG
 C Interval: 15.0DEG
 Test Speed: HIGH
 Temperature: 25.3°C
 Operators: DAMIN
 Test Date: 2024-01-27

γ Range: 0 - 180DEG
 γ Interval: 1.0DEG
 Test System: EVERFINE GO-2000B_V1 SYSTEM V2.00.471
 Humidity: 65.0%
 Test Distance: 4.880m [K=1.0000]
 Remarks:

ISOLUX DIAGRAM

NAME: LED Strip	TYPE: Indoor lighting	WEIGHT: 20g
SPEC.: COB LED	DIM.: 500*5*1.9MM	SERIAL No.: 20240125013
MFR.: Hide-a-lite	SUR.: 500*5MM	Shielding Angle:



C Range: 0 - 360DEG
 C Interval: 15.0DEG
 Test Speed: HIGH
 Temperature: 25.3°C
 Operators: DAMIN
 Test Date: 2024-01-27

γ Range: 0 - 180DEG
 γ Interval: 1.0DEG
 Test System: EVERFINE GO-2000B_V1 SYSTEM V2.00.471
 Humidity: 65.0%
 Test Distance: 4.880m [K=1.0000]
 Remarks:

LED Avg.L Report

NAME: LED Strip	TYPE: Indoor lighting	WEIGHT: 20g
SPEC.: COB LED	DIM.: 500*5*1.9MM	SERIAL No.: 20240125013
MFR.: Hide-a-lite	SUR.: 500*5MM	Shielding Angle:

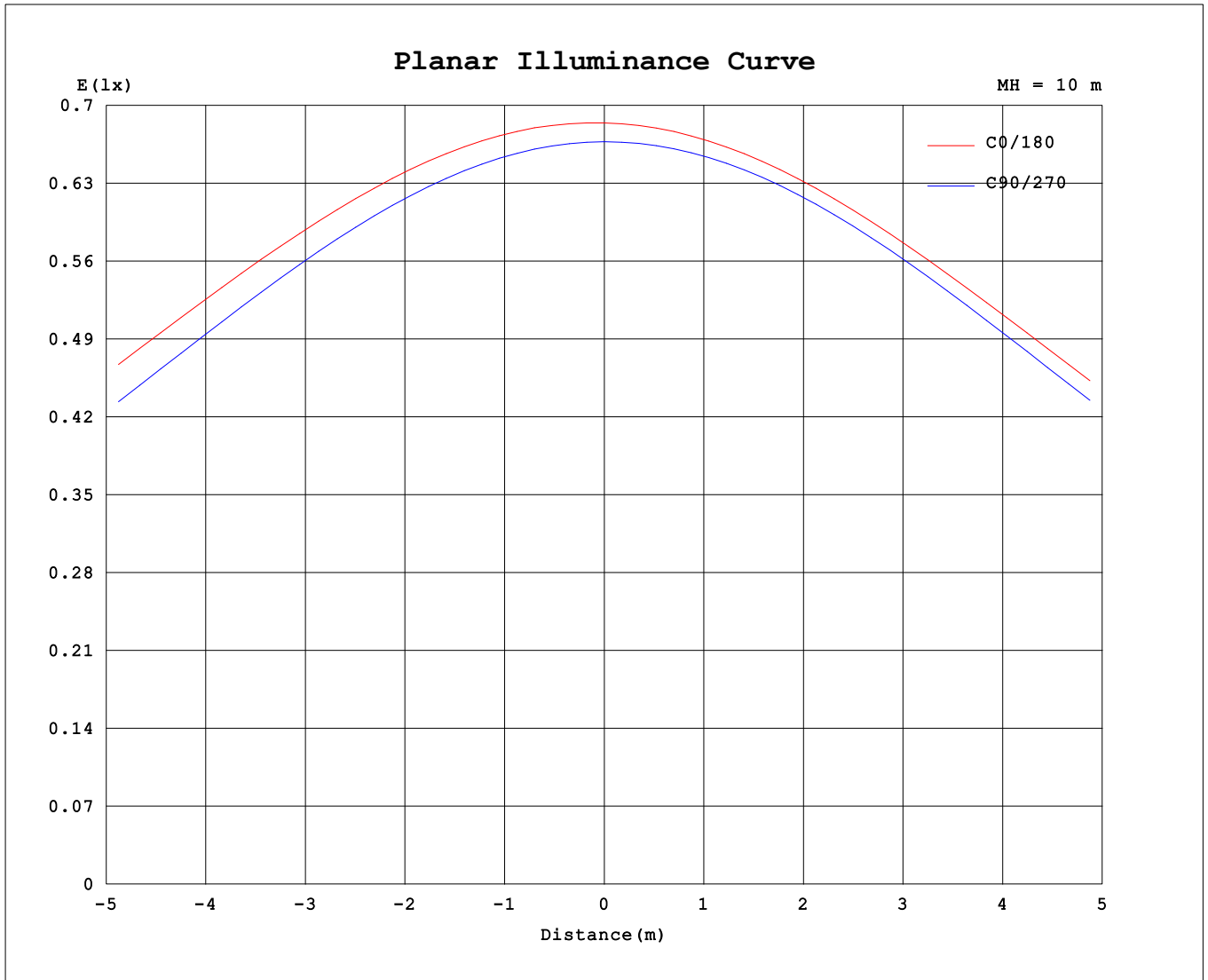
AvgL	cd/m2
L_0~180 (65) av	19399
L_0~180 (75) av	27107
L_0~180 (85) av	61660
L_90~270 (65) av	12285
L_90~270 (75) av	10923
L_90~270 (85) av	9023
L_45 (65) av	16395
L_45 (75) av	20869
L_45 (85) av	43956

Standard: GB/T 29293-2012

C Range: 0 - 360DEG
 C Interval: 15.0DEG
 Test Speed: HIGH
 Temperature:25.3°C
 Operators:DAMIN
 Test Date:2024-01-27

γ Range: 0 - 180DEG
 γ Interval: 1.0DEG
 Test System:EVERFINE GO-2000B_V1 SYSTEM V2.00.471
 Humidity:65.0%
 Test Distance:4.880m [K=1.0000]
 Remarks:

Planar Illuminance Curve



C Range: 0 - 360DEG
 C Interval: 15.0DEG
 Test Speed: HIGH
 Temperature: 25.3°C
 Operators: DAMIN
 Test Date: 2024-01-27

γ Range: 0 - 180DEG
 γ Interval: 1.0DEG
 Test System: EVERFINE GO-2000B_V1 SYSTEM V2.00.471
 Humidity: 65.0%
 Test Distance: 4.880m [K=1.0000]
 Remarks:

LUMINOUS DISTRIBUTION INTENSITY DATA

NAME: LED Strip	TYPE: Indoor lighting	WEIGHT: 20g
SPEC.: COB LED	DIM.: 500*5*1.9MM	SERIAL No.: 20240125013
MFR.: Hide-a-lite	SUR.: 500*5MM	Shielding Angle:

Table--1

UNIT: cd

C (DEG) \ γ (DEG)	0	15	30	45	60	75	90	105	120	135	150	165	180	195	210	225	240	255	270
0	68.4	68.2	67.7	67.4	67.2	67.0	66.7	66.7	66.8	67.1	67.5	68.0	68.4	68.2	67.7	67.4	67.2	67.0	66.7
5	68.4	68.3	67.7	67.4	67.1	66.8	66.5	66.4	66.4	66.6	67.0	67.5	68.0	67.8	67.3	67.0	66.9	66.7	66.5
10	68.1	67.9	67.2	66.8	66.5	66.1	65.7	65.5	65.5	65.7	66.1	66.6	67.2	66.9	66.4	66.2	66.0	65.8	65.8
15	67.3	67.2	66.4	65.9	65.4	64.9	64.4	64.2	64.1	64.4	64.8	65.3	66.1	65.7	65.2	64.9	64.7	64.5	64.5
20	66.2	66.1	65.2	64.5	63.8	63.2	62.5	62.3	62.3	62.7	63.1	63.7	64.6	64.2	63.6	63.2	62.9	62.7	62.7
25	64.7	64.6	63.6	62.7	61.8	61.0	60.3	60.0	60.1	60.6	61.1	61.8	62.8	62.3	61.7	61.1	60.6	60.3	60.4
30	62.8	62.7	61.6	60.5	59.4	58.4	57.5	57.3	57.4	58.1	58.8	59.5	60.6	60.1	59.4	58.6	57.9	57.5	57.7
35	60.7	60.5	59.3	58.0	56.6	55.3	54.3	54.0	54.3	55.2	56.1	57.0	58.1	57.6	56.8	55.8	54.8	54.3	54.4
40	58.2	57.9	56.6	55.0	53.3	51.8	50.6	50.4	50.8	52.0	53.1	54.2	55.4	54.8	53.8	52.5	51.3	50.6	50.7
45	55.4	55.1	53.6	51.7	49.7	47.9	46.4	46.4	47.0	48.5	49.8	51.2	52.4	51.7	50.6	49.0	47.4	46.4	46.5
50	52.4	52.0	50.3	48.1	45.7	43.5	41.9	41.9	42.9	44.8	46.4	48.0	49.3	48.6	47.1	45.2	43.2	41.9	42.0
55	49.3	48.7	46.9	44.2	41.4	38.8	37.0	37.1	38.6	40.8	42.9	44.6	46.0	45.2	43.6	41.2	38.8	37.0	37.0
60	46.0	45.3	43.2	40.2	36.8	33.8	31.6	32.1	34.0	36.8	39.3	41.3	42.6	41.8	39.9	37.1	34.1	31.9	31.6
65	42.7	41.9	39.5	36.1	32.1	28.5	26.0	26.7	29.3	32.7	35.7	38.0	39.3	38.4	36.2	33.0	29.4	26.5	25.9
70	39.4	38.6	35.9	32.0	27.3	23.0	20.2	21.4	24.8	28.9	32.5	35.0	36.3	35.4	32.7	29.0	24.8	21.0	20.0
75	36.4	35.4	32.5	28.2	22.8	17.5	14.3	16.2	20.6	25.6	29.6	32.3	33.8	32.8	29.9	25.5	20.4	15.8	14.0
80	33.3	32.3	29.3	24.6	18.7	12.4	8.69	11.5	17.1	22.4	26.0	28.4	29.9	29.0	26.5	22.4	16.7	11.0	8.35
85	29.0	28.0	25.0	20.7	14.9	8.21	4.23	7.87	13.1	17.5	21.0	23.4	24.7	23.7	21.3	17.4	12.9	7.18	3.64
90	24.3	23.3	20.3	15.9	10.3	4.70	0.83	4.14	8.57	13.1	16.7	19.2	20.2	19.3	16.8	12.9	8.33	3.65	0.59
95	19.9	18.8	15.6	11.2	5.70	0.66	0.28	0.37	1.38	5.16	8.87	11.8	13.0	11.7	9.36	5.43	1.84	0.35	0.28
100	12.6	11.5	8.26	3.48	0.67	0.35	0.29	0.34	0.46	0.61	1.61	2.63	2.67	2.10	1.31	0.52	0.40	0.33	0.30
105	3.13	2.27	0.93	0.48	0.42	0.35	0.31	0.34	0.40	0.48	0.55	0.60	0.56	0.54	0.49	0.44	0.39	0.34	0.34
110	0.61	0.55	0.51	0.45	0.41	0.38	0.36	0.37	0.38	0.43	0.48	0.52	0.53	0.51	0.48	0.43	0.40	0.37	0.38
115	0.53	0.51	0.49	0.45	0.42	0.42	0.40	0.41	0.42	0.46	0.48	0.51	0.53	0.51	0.49	0.45	0.44	0.41	0.42
120	0.51	0.51	0.49	0.49	0.46	0.46	0.44	0.45	0.46	0.50	0.52	0.54	0.55	0.53	0.52	0.49	0.48	0.46	0.46
125	0.53	0.54	0.53	0.53	0.50	0.50	0.48	0.50	0.51	0.54	0.55	0.57	0.58	0.57	0.56	0.53	0.52	0.50	0.51
130	0.57	0.58	0.57	0.57	0.54	0.54	0.53	0.54	0.55	0.58	0.59	0.61	0.61	0.59	0.59	0.57	0.56	0.54	0.54
135	0.60	0.61	0.60	0.60	0.57	0.58	0.57	0.58	0.59	0.61	0.62	0.64	0.64	0.62	0.62	0.60	0.59	0.58	0.58
140	0.63	0.64	0.63	0.63	0.61	0.61	0.60	0.62	0.62	0.65	0.64	0.66	0.66	0.65	0.65	0.63	0.63	0.61	0.62
145	0.66	0.68	0.66	0.66	0.64	0.65	0.64	0.65	0.65	0.68	0.67	0.69	0.69	0.68	0.68	0.66	0.66	0.65	0.66
150	0.68	0.71	0.69	0.70	0.68	0.68	0.68	0.69	0.69	0.71	0.70	0.71	0.72	0.70	0.71	0.69	0.70	0.68	0.69
155	0.72	0.73	0.72	0.73	0.71	0.72	0.71	0.73	0.72	0.74	0.73	0.74	0.75	0.73	0.74	0.72	0.73	0.72	0.72
160	0.74	0.76	0.75	0.76	0.74	0.75	0.74	0.76	0.75	0.76	0.75	0.77	0.77	0.75	0.76	0.75	0.76	0.75	0.76
165	0.77	0.79	0.77	0.78	0.77	0.78	0.77	0.78	0.78	0.79	0.78	0.79	0.80	0.78	0.79	0.78	0.79	0.78	0.79
170	0.80	0.81	0.80	0.81	0.80	0.81	0.80	0.81	0.80	0.81	0.80	0.81	0.82	0.80	0.81	0.80	0.81	0.80	0.81
175	0.83	0.83	0.82	0.83	0.82	0.83	0.82	0.83	0.82	0.83	0.82	0.83	0.84	0.82	0.83	0.82	0.83	0.82	0.83
180	0.85	0.84	0.83	0.83	0.83	0.83	0.83	0.84	0.83	0.83	0.83	0.84	0.85	0.83	0.83	0.83	0.84	0.83	0.83

C Range: 0 - 360DEG
 C Interval: 15.0DEG
 Test Speed: HIGH
 Temperature: 25.3°C
 Operators: DAMIN
 Test Date: 2024-01-27

γ Range: 0 - 180DEG
 γ Interval: 1.0DEG
 Test System: EVERFINE GO-2000B_V1 SYSTEM V2.00.471
 Humidity: 65.0%
 Test Distance: 4.880m [K=1.0000]
 Remarks:

LUMINOUS DISTRIBUTION INTENSITY DATA

NAME: LED Strip	TYPE: Indoor lighting	WEIGHT: 20g
SPEC.: COB LED	DIM.: 500*5*1.9MM	SERIAL No.: 20240125013
MFR.: Hide-a-lite	SUR.: 500*5MM	Shielding Angle:

Table--2

UNIT: cd

C (DEG) \ γ (DEG)	285	300	315	330	345															
0	66.7	66.8	67.1	67.5	68.0															
5	66.6	66.8	67.1	67.6	68.1															
10	65.9	66.3	66.6	67.2	67.9															
15	64.7	65.2	65.8	66.5	67.2															
20	63.1	63.8	64.5	65.4	66.2															
25	60.9	61.8	62.8	64.0	64.8															
30	58.3	59.5	60.7	62.1	63.0															
35	55.2	56.7	58.2	59.8	60.8															
40	51.6	53.5	55.3	57.2	58.3															
45	47.6	49.9	52.1	54.3	55.6															
50	43.3	46.0	48.6	51.1	52.6															
55	38.5	41.7	44.9	47.7	49.3															
60	33.5	37.1	40.9	44.2	46.0															
65	28.2	32.3	36.8	40.5	42.6															
70	22.7	27.5	32.7	37.0	39.3															
75	17.1	22.8	28.8	33.5	36.2															
80	11.9	18.1	25.2	30.3	33.0															
85	7.29	14.9	20.9	26.2	25.7															
90	3.74	6.70	13.3	17.6	23.3															
95	0.95	7.12	12.6	13.9	17.8															
100	0.34	0.99	5.77	10.5	11.5															
105	0.35	0.42	0.83	2.77	4.55															
110	0.38	0.43	0.54	0.74	1.03															
115	0.42	0.45	0.49	0.57	0.64															
120	0.47	0.48	0.49	0.53	0.56															
125	0.51	0.53	0.52	0.55	0.56															
130	0.54	0.56	0.56	0.58	0.58															
135	0.57	0.60	0.59	0.62	0.61															
140	0.61	0.63	0.62	0.64	0.64															
145	0.64	0.66	0.65	0.67	0.67															
150	0.68	0.69	0.68	0.70	0.70															
155	0.71	0.72	0.72	0.73	0.72															
160	0.74	0.75	0.74	0.76	0.75															
165	0.77	0.78	0.77	0.78	0.78															
170	0.80	0.81	0.80	0.81	0.81															
175	0.82	0.83	0.82	0.83	0.83															
180	0.83	0.83	0.83	0.83	0.84															

C Range: 0 - 360DEG
 C Interval: 15.0DEG
 Test Speed: HIGH
 Temperature:25.3°C
 Operators:DAMIN
 Test Date:2024-01-27

γ Range: 0 - 180DEG
 γ Interval: 1.0DEG
 Test System:EVERFINE GO-2000B_V1 SYSTEM V2.00.471
 Humidity:65.0%
 Test Distance:4.880m [K=1.0000]
 Remarks: