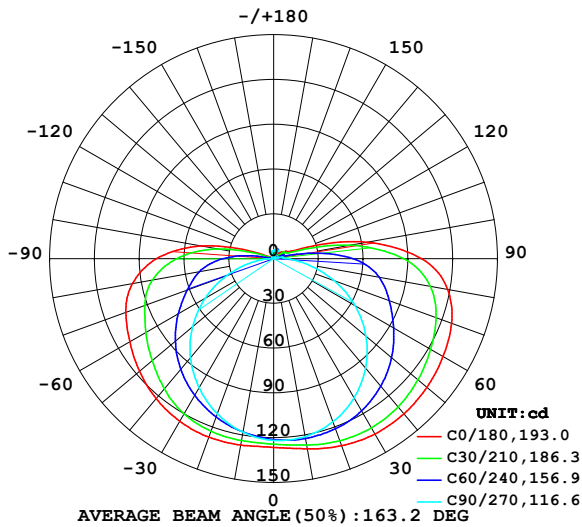


**LUMINAIRE PHOTOMETRIC TEST REPORT**

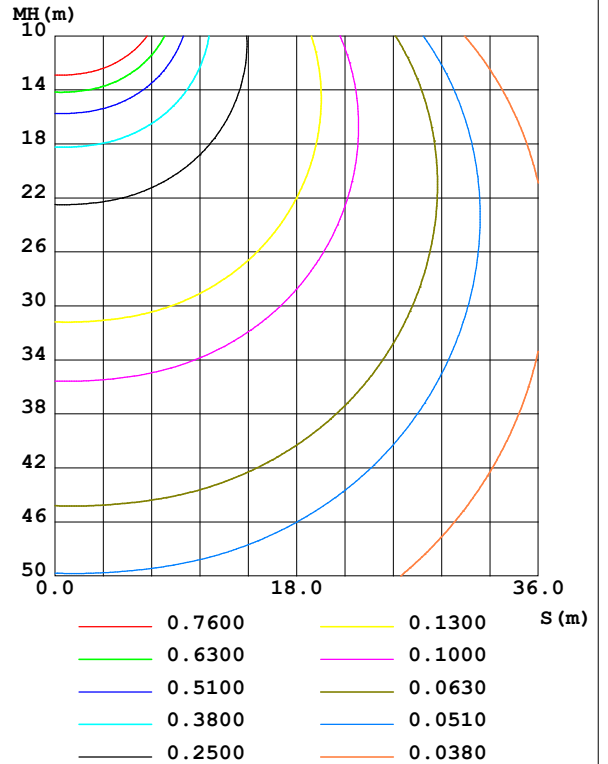
NAME: LED Strip	TYPE: Indoor lighting	WEIGHT: 20g
SPEC.: LED	DIM.: 1000*12*1.9mm	SERIAL No.: 20211223004
MFR.: EVERFINE	SUR.: 1000*12mm	Shielding Angle:

DATA OF LAMP		PHOTOMETRIC DATA			
NOBREC720B-24 (WCP) -IC-LD RGB		Imax (cd)	135.9	S/MH (C0/180)	1.51
NOMINAL POWER (W)	22.8831	LOR (%)	100.0	S/MH (C90/270)	1.23
RATED VOLTAGE (V)	DC 24	TOTAL FLUX (lm)	653.55	<input type="checkbox"/> UP, DN (C0-180)	6.2, 46.8
NOMINAL FLUX (lm)	653.551	CIE CLASS	SEMI-D.	<input type="checkbox"/> UP, DN (C180-360)	4.9, 42.1
LAMPS INSIDE	1	<input type="checkbox"/> up (%)	11.1	CIBSE SHR NOM	1.50
TEST VOLTAGE (V)	DC 24	<input type="checkbox"/> down (%)	88.9	CIBSE SHR MAX	1.55

LUMINOUS INTENSITY DISTRIBUTION DIAGRAM



C0 PLANE ISOLUX DIAGRAM (UNIT:lx)



C Range: 0 - 360DEG  
 C Interval: 15.0DEG  
 Test Speed: HIGH  
 Temperature: 25.3°C  
 Operators: DAMIN  
 Test Date: 2023-09-18

Range: 0 - 180DEG  
 Interval: 1.0DEG  
 Test System: EVERFINE GO-2000B\_V1 SYSTEM V2.00.471  
 Humidity: 65.0%  
 Test Distance: 4.880m [K=1.0000]  
 Remarks:

**ZONAL FLUX DIAGRAM**

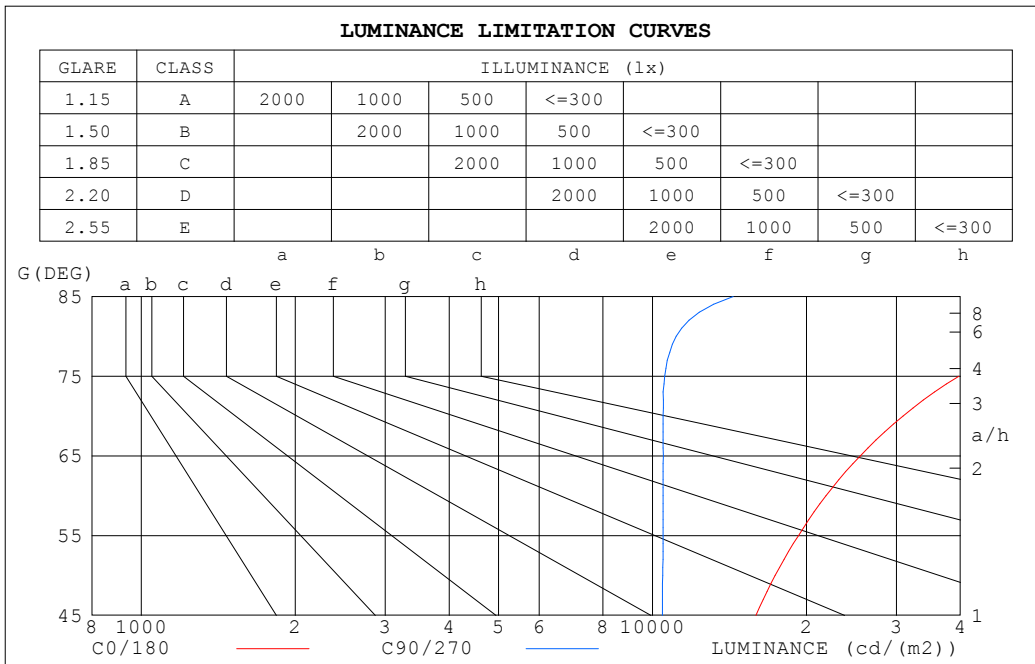
ZONAL FLUX DIAGRAM:

°	C0	C45	C90	C135	C180	C225	C270	C315	°	□ zone	□ total	%lum,lamp
10	129.4	123.7	121.0	121.9	126.8	118.7	118.1	120.0	0- 10	11.68	11.68	1.79,1.79
20	133.3	125.4	116.3	120.7	127.2	115.0	110.6	118.3	10- 20	34.48	46.16	7.06,7.06
30	135.6	124.8	107.7	117.2	125.8	110.4	99.90	115.1	20- 30	55.10	101.3	15.5,15.5
40	135.8	121.7	95.80	111.4	122.5	104.0	86.76	110.1	30- 40	71.77	173.0	26.5,26.5
50	134.1	116.3	80.75	103.4	117.3	95.98	70.84	102.8	40- 50	82.97	256.0	39.2,39.2
60	131.1	109.4	62.94	93.75	111.3	86.85	52.94	94.31	50- 60	88.05	344.1	52.6,52.6
70	126.8	102.1	43.04	83.82	105.4	77.89	33.45	85.15	60- 70	87.33	431.4	66,66
80	118.3	92.31	23.19	73.41	95.98	68.10	14.56	72.73	70- 80	81.47	512.9	78.5,78.5
90	99.17	73.07	9.142	54.99	78.57	50.67	1.708	52.15	80- 90	67.97	580.8	88.9,88.9
100	63.72	38.67	6.120	22.00	49.41	23.26	0.9068	24.94	90-100	44.27	625.1	95.6,95.6
110	20.34	7.364	2.861	1.725	11.13	1.526	1.022	3.902	100-110	16.13	641.2	98.1,98.1
120	9.870	1.363	0.9385	1.447	1.579	1.412	1.320	2.738	110-120	3.600	644.8	98.7,98.7
130	6.917	1.283	1.065	1.424	1.529	1.552	1.381	2.522	120-130	2.108	646.9	99,99
140	4.317	1.278	1.197	2.365	1.528	1.679	1.898	2.913	130-140	1.662	648.6	99.2,99.2
150	2.033	1.374	6.063	3.324	1.535	1.771	3.025	3.960	140-150	1.526	650.1	99.5,99.5
160	1.636	6.836	6.110	5.359	1.575	2.436	4.390	4.632	150-160	1.630	651.8	99.7,99.7
170	1.586	5.872	5.789	6.952	1.619	4.600	5.122	6.748	160-170	1.309	653.1	99.9,99.9
180	1.640	5.093	5.676	6.773	1.642	5.703	5.676	7.636	170-180	0.4864	653.6	100,100
DEG	LUMINOUS INTENSITY:cd									UNIT:lm		

C Range: 0 - 360DEG  
 C Interval: 15.0DEG  
 Test Speed: HIGH  
 Temperature:25.3°C  
 Operators:DAMIN  
 Test Date:2023-09-18

□ Range: 0 - 180DEG  
 □ Interval: 1.0DEG  
 Test System:EVERFINE GO-2000B\_V1 SYSTEM V2.00.471  
 Humidity:65.0%  
 Test Distance:4.880m [K=1.0000]  
 Remarks:

**LUMINANCE LIMITATION CURVES**



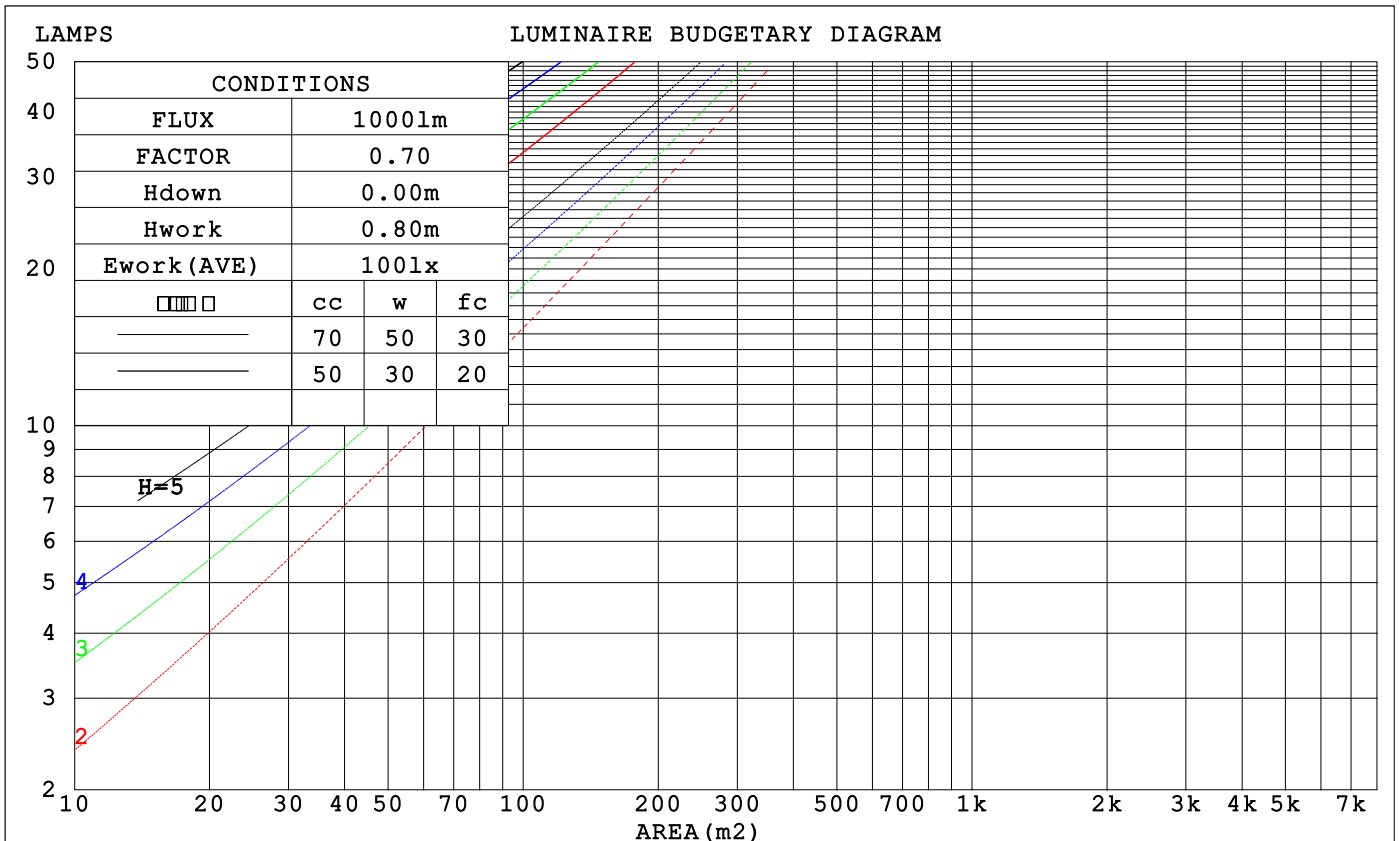
LUMINANCE cd/(m2)		
G (DEG)	C0/180	C90/270
85	105922	14385
80	56752	11131
75	39722	10568
70	30902	10487
65	25482	10496
60	21851	10490
55	19284	10484
50	17380	10468
45	15920	10450

C Range: 0 - 360DEG  
 C Interval: 15.0DEG  
 Test Speed: HIGH  
 Temperature: 25.3°C  
 Operators: DAMIN  
 Test Date: 2023-09-18

Range: 0 - 180DEG  
 Interval: 1.0DEG  
 Test System: EVERFINE GO-2000B\_V1 SYSTEM V2.00.471  
 Humidity: 65.0%  
 Test Distance: 4.880m [K=1.0000]  
 Remarks:

**CU AND LUMINAIRE BUDGETARY ESTIMATE DIAGRAM**

□cc	80%			70%			50%			30%			10%			0
□w	50%	30%	10%	50%	30%	10%	50%	30%	10%	50%	30%	10%	50%	30%	10%	0
□fc	20%			20%			20%			20%			20%			0
RCR	RCR:Room Cavity Ratio			Coefficients of Utilization(CU)												
0.0	1.16	1.16	1.16	1.12	1.12	1.12	1.05	1.05	1.05	.98	.98	.98	.92	.92	.92	.89
1.0	.95	.89	.83	.91	.86	.81	.85	.80	.76	.79	.75	.72	.73	.70	.68	.64
2.0	.80	.71	.64	.77	.69	.62	.71	.65	.59	.66	.61	.56	.62	.57	.53	.50
3.0	.69	.59	.51	.66	.57	.50	.61	.54	.48	.57	.51	.45	.53	.48	.43	.40
4.0	.60	.50	.42	.58	.48	.41	.54	.46	.39	.50	.43	.38	.46	.41	.36	.33
5.0	.53	.43	.35	.51	.42	.35	.48	.39	.33	.44	.37	.32	.41	.35	.30	.28
6.0	.47	.37	.30	.46	.36	.30	.43	.35	.29	.40	.33	.27	.37	.31	.26	.24
7.0	.43	.33	.26	.41	.32	.26	.39	.31	.25	.36	.29	.24	.34	.28	.23	.21
8.0	.39	.29	.23	.37	.29	.23	.35	.27	.22	.33	.26	.21	.31	.25	.20	.18
9.0	.35	.27	.21	.34	.26	.20	.32	.25	.20	.30	.24	.19	.28	.23	.18	.16
10.0	.32	.24	.18	.31	.24	.18	.30	.22	.18	.28	.22	.17	.26	.21	.16	.14



C Range: 0 - 360DEG  
 C Interval: 15.0DEG  
 Test Speed: HIGH  
 Temperature:25.3°C  
 Operators:DAMIN  
 Test Date:2023-09-18

□ Range: 0 - 180DEG  
 □ Interval: 1.0DEG  
 Test System:EVERFINE GO-2000B\_V1 SYSTEM V2.00.471  
 Humidity:65.0%  
 Test Distance:4.880m [K=1.0000]  
 Remarks:

**WEC AND CCEC**

□cc	80%			70%			50%			30%			10%			0
□w	50%	30%	10%	50%	30%	10%	50%	30%	10%	50%	30%	10%	50%	30%	10%	0
□fc	20%			20%			20%			20%			20%			0
RCR	RCR:Room Cavity Ratio						Wall Exitance Coefficients (WEC)									
0.0																
1.0	.435	.247	.078	.424	.242	.077	.404	.232	.074	.385	.222	.071	.368	.213	.069	
2.0	.367	.201	.062	.357	.197	.061	.339	.188	.059	.322	.181	.057	.307	.173	.055	
3.0	.321	.171	.051	.312	.167	.050	.296	.160	.049	.281	.154	.047	.266	.148	.046	
4.0	.286	.148	.044	.278	.145	.043	.263	.139	.042	.249	.134	.040	.237	.129	.039	
5.0	.257	.131	.038	.250	.129	.037	.237	.123	.036	.225	.119	.035	.213	.114	.034	
6.0	.234	.117	.034	.228	.115	.033	.216	.111	.032	.205	.106	.031	.194	.102	.030	
7.0	.215	.106	.030	.209	.104	.030	.198	.100	.029	.188	.096	.028	.178	.093	.027	
8.0	.199	.097	.027	.193	.095	.027	.183	.092	.026	.174	.088	.025	.165	.085	.025	
9.0	.184	.089	.025	.180	.088	.025	.171	.084	.024	.162	.081	.023	.154	.078	.023	
10.0	.172	.083	.023	.168	.081	.023	.159	.078	.022	.151	.075	.021	.144	.072	.021	

□cc	80%			70%			50%			30%			10%			0
□w	50%	30%	10%	50%	30%	10%	50%	30%	10%	50%	30%	10%	50%	30%	10%	0
□fc	20%			20%			20%			20%			20%			0
RCR	RCR:Room Cavity Ratio						Ceiling Cavity Exitance Coefficients (CCEC)									
0.0	.275	.275	.275	.235	.235	.235	.161	.161	.161	.092	.092	.092	.029	.029	.029	
1.0	.274	.241	.210	.235	.206	.181	.161	.142	.125	.092	.082	.073	.030	.026	.023	
2.0	.268	.218	.175	.230	.187	.151	.157	.130	.105	.091	.075	.062	.029	.024	.020	
3.0	.261	.201	.154	.224	.174	.133	.154	.121	.093	.089	.070	.055	.028	.023	.018	
4.0	.253	.189	.140	.217	.163	.121	.149	.114	.086	.086	.067	.051	.028	.022	.017	
5.0	.245	.179	.130	.210	.155	.113	.145	.108	.080	.084	.063	.047	.027	.021	.016	
6.0	.237	.171	.124	.203	.148	.108	.140	.104	.076	.081	.061	.045	.026	.020	.015	
7.0	.229	.164	.119	.197	.142	.103	.136	.100	.073	.079	.059	.044	.026	.019	.014	
8.0	.222	.159	.115	.191	.138	.100	.132	.097	.071	.077	.057	.042	.025	.019	.014	
9.0	.215	.154	.112	.186	.133	.098	.129	.094	.069	.075	.055	.041	.024	.018	.014	
10.0	.209	.149	.110	.180	.130	.096	.125	.091	.068	.073	.054	.041	.024	.018	.013	

C Range: 0 - 360DEG  
 C Interval: 15.0DEG  
 Test Speed: HIGH  
 Temperature:25.3°C  
 Operators:DAMIN  
 Test Date:2023-09-18

□ Range: 0 - 180DEG  
 □ Interval: 1.0DEG  
 Test System:EVERFINE GO-2000B\_V1 SYSTEM V2.00.471  
 Humidity:65.0%  
 Test Distance:4.880m [K=1.0000]  
 Remarks:

**UGR(Unified Glare Rating) Table**

ceiling/cavity	0.7	0.7	0.5	0.5	0.3	0.7	0.7	0.5	0.5	0.3
walls	0.5	0.3	0.5	0.3	0.3	0.5	0.3	0.5	0.3	0.3
working plane	0.2	0.2	0.2	0.2	0.2	0.2	0.2	0.2	0.2	0.2
Room dimensions	Viewed crosswise					Viewed endwise				
x = 2H y = 2H	24.9	26.5	25.4	26.9	27.3	22.1	23.6	22.5	24.0	24.5
3H	28.1	29.5	28.5	30.0	30.4	23.9	25.3	24.4	25.8	26.3
4H	29.8	31.2	30.3	31.7	32.2	24.8	26.1	25.2	26.6	27.1
6H	31.8	33.1	32.3	33.5	34.1	25.5	26.8	26.0	27.3	27.8
8H	32.8	34.1	33.3	34.5	35.1	25.9	27.1	26.4	27.6	28.2
12H	34.0	35.2	34.5	35.7	36.2	26.2	27.4	26.7	27.9	28.4
4H 2H	25.6	27.0	26.1	27.5	28.0	23.7	25.1	24.2	25.6	26.1
3H	29.0	30.3	29.6	30.8	31.3	25.9	27.1	26.4	27.6	28.2
4H	31.0	32.1	31.5	32.6	33.2	27.0	28.1	27.5	28.7	29.2
6H	33.1	34.1	33.7	34.7	35.3	28.0	29.0	28.6	29.6	30.2
8H	34.3	35.2	34.9	35.8	36.4	28.4	29.4	29.0	30.0	30.6
12H	35.6	36.5	36.2	37.1	37.7	28.8	29.7	29.4	30.3	31.0
8H 4H	31.5	32.4	32.0	33.0	33.6	28.5	29.5	29.1	30.0	30.7
6H	33.9	34.7	34.5	35.3	36.0	30.0	30.8	30.6	31.4	32.1
8H	35.3	36.0	35.9	36.6	37.3	30.7	31.4	31.3	32.1	32.8
12H	36.8	37.5	37.5	38.1	38.9	31.3	32.0	32.0	32.6	33.3
12H 4H	31.5	32.4	32.1	33.0	33.6	29.0	29.9	29.6	30.5	31.1
6H	34.1	34.8	34.7	35.4	36.1	30.7	31.5	31.4	32.1	32.8
8H	35.6	36.2	36.2	36.9	37.6	31.7	32.3	32.3	32.9	33.7
Variations with the observer position at spacings(CIE Pub.117):										
S = 1.0H	+ 0.1 / - 0.1					+ 0.1 / - 0.1				
1.5H	+ 0.2 / - 0.3					+ 0.2 / - 0.3				
2.0H	+ 0.3 / - 0.4					+ 0.3 / - 0.4				

CIE Pub.117, 653.6 lm Total Lamp Luminous Flux Correct (8log(F/F0) = -1.5)  
 Area: 0.012 m2

C Range: 0 - 360DEG  
 C Interval: 15.0DEG  
 Test Speed: HIGH  
 Temperature:25.3°C  
 Operators:DAMIN  
 Test Date:2023-09-18

Range: 0 - 180DEG  
 Interval: 1.0DEG  
 Test System:EVERFINE GO-2000B\_V1 SYSTEM V2.00.471  
 Humidity:65.0%  
 Test Distance:4.880m [K=1.0000]  
 Remarks:

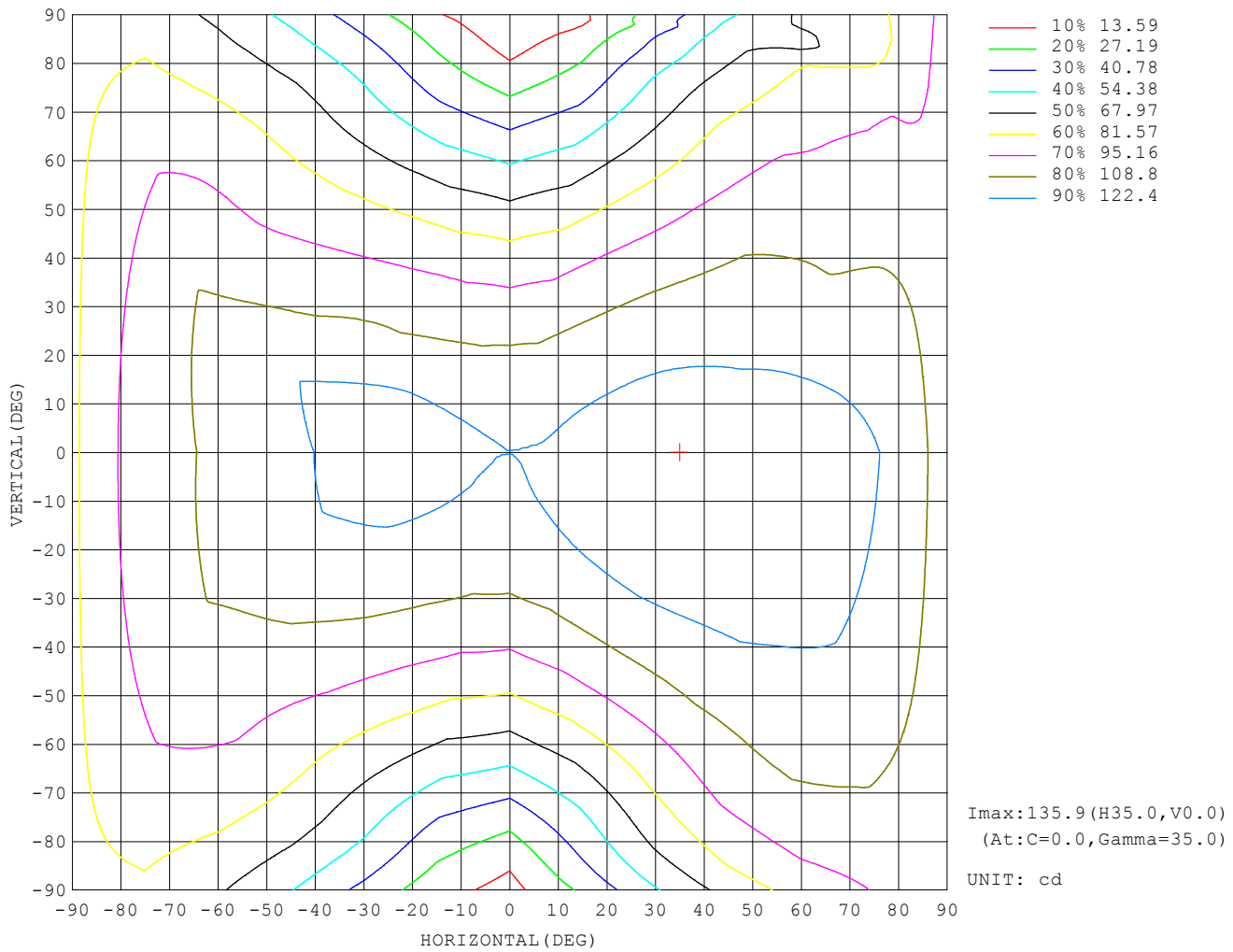
**UTILIZATION FACTORS TABLE**

REFLECTANCE										
Ceiling	0.8	0.8	0.8	0.7	0.7	0.7	0.5	0.5	0.5	0
Walls	0.7	0.5	0.3	0.7	0.5	0.3	0.7	0.5	0.3	0
Working plane	0.2	0.2	0.2	0.2	0.2	0.2	0.2	0.2	0.2	0
ROOM INDEX	UTILIZATION FACTORS (PERCENT) $k(RI) \times RCR = 5$									
$k = 0.60$	47	34	26	46	34	26	44	33	26	19
0.80	56	42	34	55	42	34	52	41	33	25
1.00	64	50	41	62	49	41	59	50	40	31
1.25	70	57	48	68	56	47	65	54	46	37
1.50	76	63	53	73	61	53	69	59	51	41
2.00	83	71	62	80	69	61	76	66	59	48
2.50	88	77	68	85	75	67	79	71	64	53
3.00	92	81	73	89	79	72	83	75	69	57
4.00	97	88	81	93	85	79	87	81	75	62
5.00	100	92	86	96	89	83	90	84	79	66
ROOM INDEX	UF (total)									Direct
According to DIN EN 13032-2 2004			Suspended				SHRNOM = 1.25			

C Range: 0 - 360DEG  
 C Interval: 15.0DEG  
 Test Speed: HIGH  
 Temperature: 25.3°C  
 Operators: DAMIN  
 Test Date: 2023-09-18

Range: 0 - 180DEG  
 Interval: 1.0DEG  
 Test System: EVERFINE GO-2000B\_V1 SYSTEM V2.00.471  
 Humidity: 65.0%  
 Test Distance: 4.880m [K=1.0000]  
 Remarks:

**ISOCANDELA DIAGRAM**

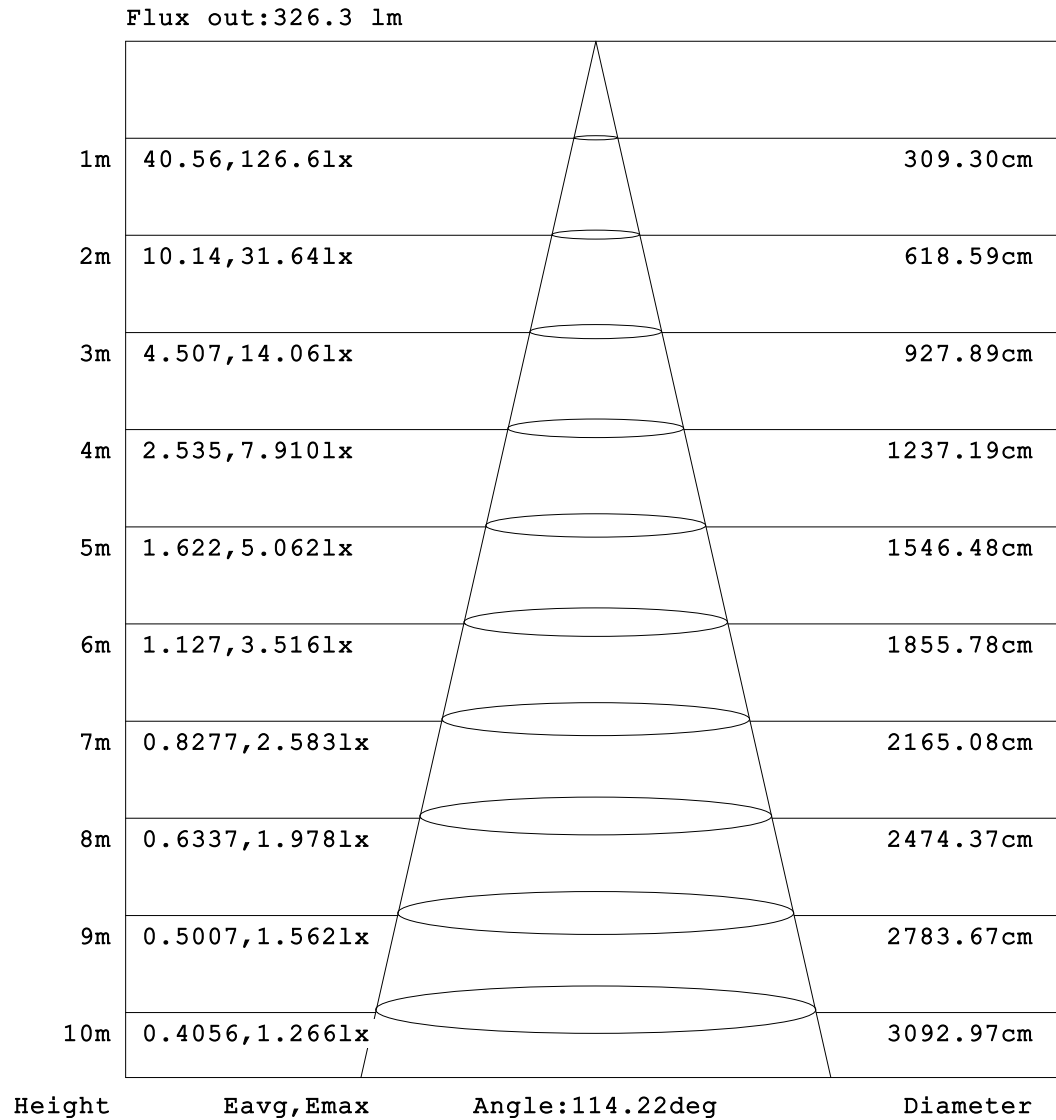


C Range: 0 - 360DEG  
 C Interval: 15.0DEG  
 Test Speed: HIGH  
 Temperature: 25.3°C  
 Operators: DAMIN  
 Test Date: 2023-09-18

Range: 0 - 180DEG  
 Interval: 1.0DEG  
 Test System: EVERFINE GO-2000B\_V1 SYSTEM V2.00.471  
 Humidity: 65.0%  
 Test Distance: 4.880m [K=1.0000]  
 Remarks:



**AAI Figure**

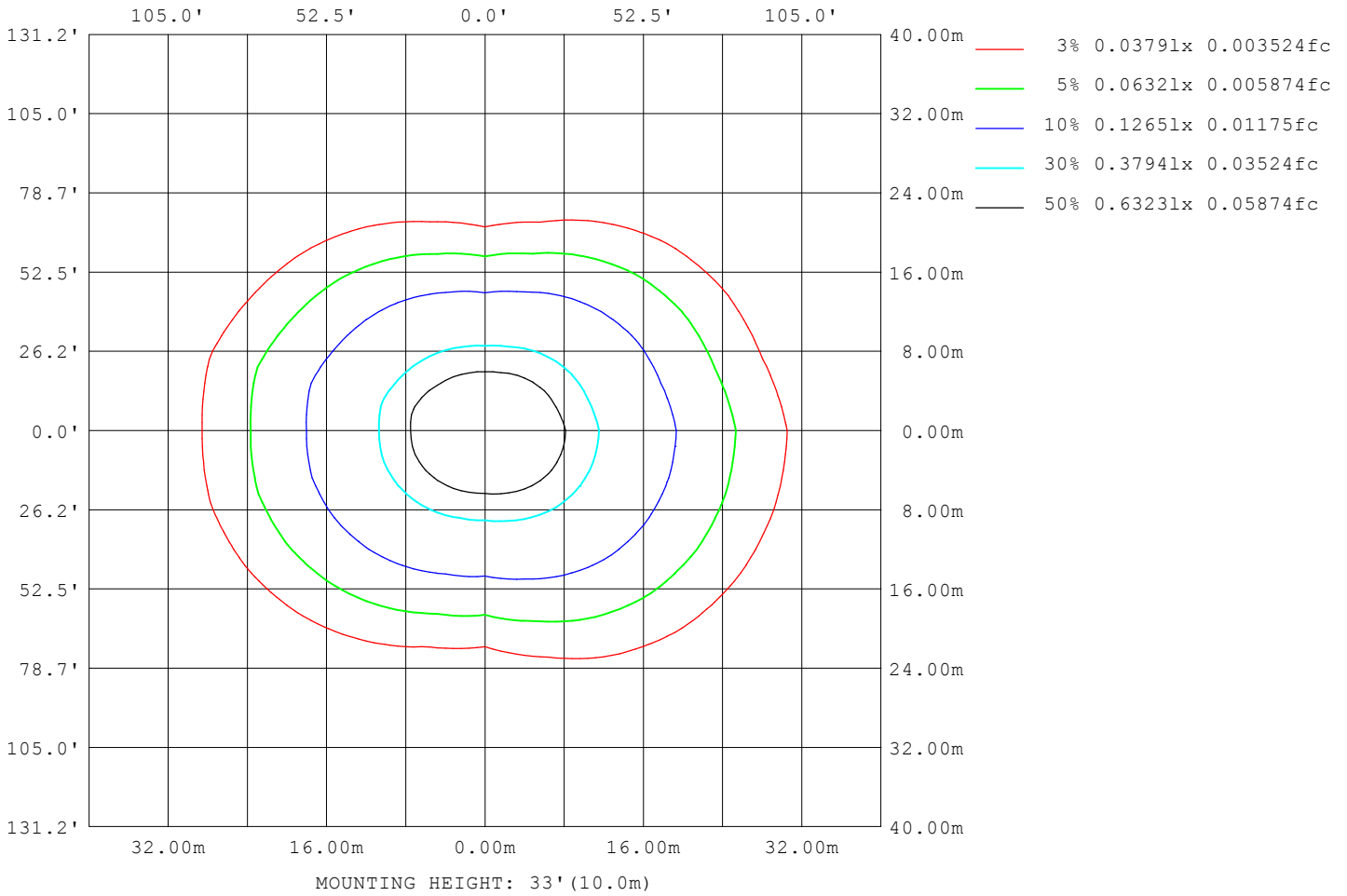


**Note:**The Curves indicate the illuminated area and the average illumination when the luminaire is at different distance.

C Range: 0 - 360DEG  
 C Interval: 15.0DEG  
 Test Speed: HIGH  
 Temperature:25.3°C  
 Operators:DAMIN  
 Test Date:2023-09-18

Range: 0 - 180DEG  
 Interval: 1.0DEG  
 Test System:EVERFINE GO-2000B\_V1 SYSTEM V2.00.471  
 Humidity:65.0%  
 Test Distance:4.880m [K=1.0000]  
 Remarks:

**ISOLUX DIAGRAM**



C Range: 0 - 360DEG  
 C Interval: 15.0DEG  
 Test Speed: HIGH  
 Temperature: 25.3°C  
 Operators: DAMIN  
 Test Date: 2023-09-18

Range: 0 - 180DEG  
 Interval: 1.0DEG  
 Test System: EVERFINE GO-2000B\_V1 SYSTEM V2.00.471  
 Humidity: 65.0%  
 Test Distance: 4.880m [K=1.0000]  
 Remarks:

LED Avg.L Report

NAME: LED Strip	TYPE: Indoor lighting	WEIGHT: 20g
SPEC.: LED	DIM.: 1000*12*1.9mm	SERIAL No.: 20211223004
MFR.: EVERFINE	SUR.: 1000*12mm	Shielding Angle:

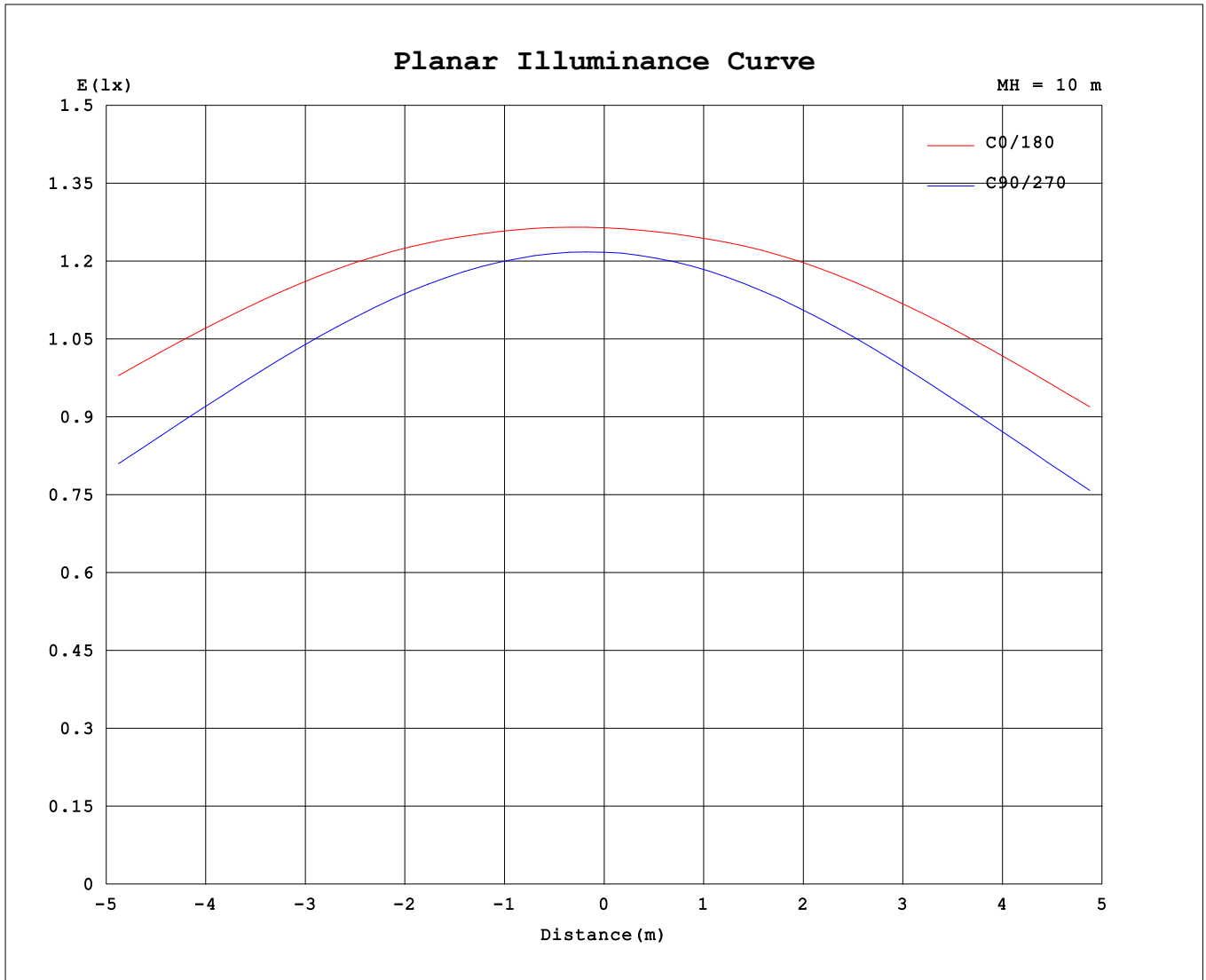
AvgL	cd/m2
L_0~180 (65) av	23429
L_0~180 (75) av	36228
L_0~180 (85) av	95169
L_90~270 (65) av	9521
L_90~270 (75) av	9099
L_90~270 (85) av	10553
L_45 (65) av	18071
L_45 (75) av	26629
L_45 (85) av	65350

Standard: GB/T 29293-2012

C Range: 0 - 360DEG  
 C Interval: 15.0DEG  
 Test Speed: HIGH  
 Temperature:25.3°C  
 Operators:DAMIN  
 Test Date:2023-09-18

Range: 0 - 180DEG  
 Interval: 1.0DEG  
 Test System:EVERFINE GO-2000B\_V1 SYSTEM V2.00.471  
 Humidity:65.0%  
 Test Distance:4.880m [K=1.0000]  
 Remarks:

**Planar Illuminance Curve**



C Range: 0 - 360DEG  
 C Interval: 15.0DEG  
 Test Speed: HIGH  
 Temperature: 25.3°C  
 Operators: DAMIN  
 Test Date: 2023-09-18

Range: 0 - 180DEG  
 Interval: 1.0DEG  
 Test System: EVERFINE GO-2000B\_V1 SYSTEM V2.00.471  
 Humidity: 65.0%  
 Test Distance: 4.880m [K=1.0000]  
 Remarks:

LUMINOUS DISTRIBUTION INTENSITY DATA

Table--1

UNIT: cd

C (DEG) \ □ (DEG)	0	15	30	45	60	75	90	105	120	135	150	165	180	195	210	225	240	255	270
0	126	126	124	121	121	121	122	121	121	121	122	122	126	126	124	121	121	121	122
5	128	127	125	123	122	122	122	121	122	122	123	123	126	126	124	120	120	120	120
10	129	129	127	124	122	121	121	121	121	122	123	124	127	127	124	119	118	117	118
15	131	130	128	125	122	120	119	119	120	122	124	125	127	127	124	117	116	115	115
20	133	132	130	125	121	118	116	116	118	121	124	125	127	128	123	115	113	111	111
25	135	133	131	125	120	115	112	113	116	119	123	125	127	127	122	113	110	106	106
30	136	134	131	125	118	111	108	109	113	117	122	125	126	127	120	110	106	102	99.9
35	136	134	131	124	115	107	102	104	109	115	120	124	124	126	117	108	102	96.1	93.6
40	136	134	130	122	112	102	95.8	97.9	104	111	118	122	122	124	114	104	96.8	90.0	86.8
45	135	133	128	119	108	96.3	88.7	91.3	98.9	108	115	120	120	122	110	100	91.7	83.4	79.2
50	134	132	126	116	103	89.8	80.7	84.0	93.2	103	112	118	117	120	106	96.0	86.0	76.3	70.8
55	133	130	124	113	98.1	82.8	72.2	76.2	87.0	98.7	109	115	114	117	103	91.5	80.0	68.7	62.1
60	131	129	121	109	92.8	75.4	62.9	67.7	80.5	93.7	105	112	111	114	98.8	86.9	73.8	60.9	52.9
65	129	126	119	106	87.5	67.4	53.2	59.1	73.8	88.7	101	110	108	111	95.2	82.2	67.5	52.8	43.3
70	127	124	116	102	82.4	59.7	43.0	50.3	67.1	83.8	97.7	107	105	108	91.9	77.9	61.6	44.9	33.5
75	123	120	112	97.9	77.5	52.6	32.8	41.7	60.8	79.3	93.7	103	102	103	88.1	73.8	56.1	37.2	23.7
80	118	115	107	92.3	71.8	46.0	23.2	33.6	54.8	73.4	87.8	97.2	96.0	96.1	82.5	68.1	50.6	30.3	14.6
85	111	107	98.8	84.5	64.1	39.0	15.0	26.3	47.1	65.1	79.5	89.2	88.3	87.0	74.8	60.1	43.1	23.6	7.03
90	99.2	95.7	87.2	73.1	53.2	29.6	9.14	18.4	37.1	55.0	69.6	79.3	78.6	76.2	65.0	50.7	33.8	14.6	1.71
95	82.5	78.9	70.8	57.2	38.1	16.4	6.40	4.33	23.5	40.7	56.3	65.7	65.2	62.6	52.8	38.8	23.1	5.72	1.01
100	63.7	59.7	52.2	38.7	19.4	8.13	6.12	1.52	5.93	22.0	37.1	48.0	49.4	46.7	37.5	23.3	8.32	1.08	0.91
105	41.7	37.6	30.4	18.2	8.28	7.33	2.86	1.12	1.69	5.69	16.3	25.0	29.5	26.4	18.7	6.70	1.33	1.03	0.94
110	20.3	16.3	13.2	7.36	3.92	3.49	2.86	0.88	1.48	1.73	3.27	7.50	11.1	8.73	4.09	1.53	1.20	1.03	1.02
115	11.5	8.01	9.65	7.87	2.30	0.96	0.90	0.90	1.37	1.56	1.84	1.97	2.25	1.97	1.59	1.41	1.22	1.10	1.22
120	9.87	6.57	6.58	1.36	1.24	1.00	0.94	0.99	1.21	1.45	1.75	1.76	1.58	1.63	1.52	1.41	1.30	1.21	1.32
125	8.30	5.27	8.09	1.29	1.16	1.04	1.00	1.57	1.21	1.45	1.73	1.82	1.54	1.57	1.51	1.48	1.40	1.29	1.32
130	6.92	3.50	1.35	1.28	1.13	1.08	1.06	2.10	2.30	1.42	1.60	1.78	1.53	1.54	1.51	1.55	1.48	1.37	1.38
135	5.65	2.85	1.34	1.27	1.17	1.15	1.13	2.52	3.37	1.44	1.57	1.71	1.53	1.53	1.51	1.62	1.55	1.45	1.62
140	4.32	1.45	1.34	1.28	1.23	1.21	1.20	2.78	4.24	2.36	1.56	1.55	1.53	1.52	1.51	1.68	1.61	1.53	1.90
145	2.94	1.42	1.36	1.32	1.28	1.29	1.30	3.27	4.97	3.57	1.60	1.57	1.53	1.51	1.52	1.73	1.67	1.74	2.47
150	2.03	1.45	1.40	1.37	1.38	6.62	6.06	5.42	4.95	3.32	2.86	1.60	1.54	1.51	1.53	1.77	1.78	2.41	3.02
155	1.71	1.48	1.44	1.44	6.88	6.59	6.10	5.82	5.42	4.38	2.32	1.87	1.54	1.51	1.54	1.82	2.28	3.22	3.73
160	1.64	1.52	1.48	6.84	6.47	6.54	6.11	5.99	5.72	5.36	5.49	3.48	1.57	1.54	1.56	2.44	2.97	3.98	4.39
165	1.71	1.55	1.54	6.15	6.15	6.43	6.02	6.09	6.04	6.67	6.77	6.09	1.60	1.56	1.58	3.33	3.43	4.73	4.91
170	1.59	1.59	4.01	5.87	5.99	6.10	5.79	5.95	6.38	6.95	7.62	7.31	1.62	1.58	1.61	4.60	4.24	5.19	5.12
175	1.60	1.62	3.33	5.60	5.83	5.86	5.72	6.03	6.52	7.01	7.92	7.11	1.64	1.62	1.63	5.30	4.97	5.56	5.44
180	1.64	1.68	2.76	5.09	5.74	5.83	5.68	5.90	6.57	6.77	7.97	7.81	1.64	1.65	1.66	5.70	5.69	5.79	5.68

C Range: 0 - 360DEG  
 C Interval: 15.0DEG  
 Test Speed: HIGH  
 Temperature:25.3°C  
 Operators:DAMIN  
 Test Date:2023-09-18

□ Range: 0 - 180DEG  
 □ Interval: 1.0DEG  
 Test System:EVERFINE GO-2000B\_V1 SYSTEM V2.00.471  
 Humidity:65.0%  
 Test Distance:4.880m [K=1.0000]  
 Remarks:

LUMINOUS DISTRIBUTION INTENSITY DATA

Table--2

UNIT: cd

C (DEG) \ □ (DEG)	285	300	315	330	345														
0	121	121	121	122	122														
5	120	121	121	122	122														
10	118	119	120	122	123														
15	115	117	119	122	124														
20	111	115	118	122	125														
25	107	112	117	122	126														
30	102	109	115	122	126														
35	96.7	105	113	121	126														
40	90.7	100	110	119	125														
45	84.1	95.4	107	117	124														
50	76.9	90.0	103	115	122														
55	69.2	84.1	98.6	112	120														
60	61.1	77.9	94.3	109	117														
65	52.7	71.4	89.9	105	114														
70	44.1	65.1	85.2	100	109														
75	35.6	59.1	79.9	94.6	105														
80	28.0	52.1	72.7	88.3	100														
85	19.9	42.8	63.7	80.3	92.1														
90	11.5	33.2	52.1	70.4	77.2														
95	3.89	24.3	33.8	53.1	67.8														
100	1.56	7.59	24.9	40.8	45.9														
105	1.39	2.95	8.43	21.8	30.3														
110	1.41	2.55	3.90	7.90	14.0														
115	1.54	2.47	3.01	4.89	6.68														
120	1.66	2.53	2.74	4.07	5.23														
125	1.50	2.29	2.58	3.74	4.79														
130	1.76	2.39	2.52	3.46	4.60														
135	2.39	3.02	2.33	3.41	4.60														
140	2.82	2.81	2.91	3.35	4.64														
145	3.59	3.09	3.44	3.46	4.46														
150	4.39	3.79	3.96	4.41	4.80														
155	5.22	4.76	4.50	5.00	4.86														
160	5.82	5.17	4.63	5.67	6.51														
165	6.01	5.64	5.96	5.48	6.87														
170	6.10	6.12	6.75	5.33	7.41														
175	6.13	6.43	7.30	6.83	5.50														
180	6.29	6.55	7.64	7.63	6.06														

C Range: 0 - 360DEG  
 C Interval: 15.0DEG  
 Test Speed: HIGH  
 Temperature:25.3°C  
 Operators:DAMIN  
 Test Date:2023-09-18

□ Range: 0 - 180DEG  
 □ Interval: 1.0DEG  
 Test System:EVERFINE GO-2000B\_V1 SYSTEM V2.00.471  
 Humidity:65.0%  
 Test Distance:4.880m [K=1.0000]  
 Remarks: