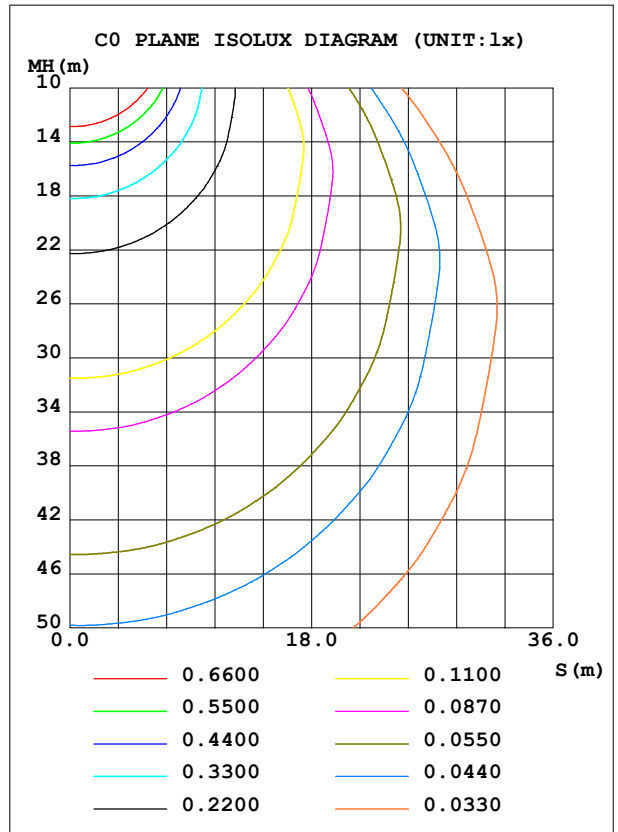
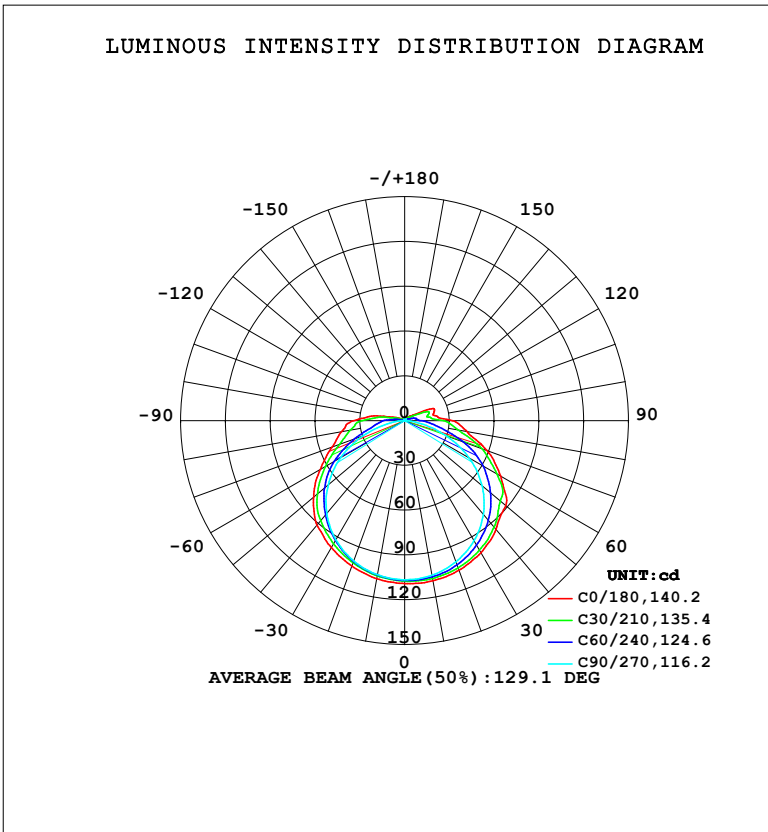


**LUMINAIRE PHOTOMETRIC TEST REPORT**

NAME: LED Strip	TYPE: Indoor lighting	WEIGHT: 75g
SPEC.: 2835 080LED	DIM.: 500*8*1.2MM	SERIAL No.: 20240627007
MFR.: EVERFINE	SUR.: 500*8MM	Shielding Angle:

DATA OF LAMP		PHOTOMETRIC DATA			
WNOBBE-24 (WCP) -UR-DK-CV-UE-EP		Imax (cd)	109.3	S/MH (C0/180)	1.35
NOMINAL POWER (W)	2.34626	LOR (%)	100.0	S/MH (C90/270)	1.29
RATED VOLTAGE (V)	DC 24V	TOTAL FLUX (lm)	418.29	$\eta$ UP, DN (C0-180)	4.2, 46.3
NOMINAL FLUX (lm)	418.289	CIE CLASS	DIRECT	$\eta$ UP, DN (C180-360)	3.8, 45.8
LAMPS INSIDE	1	$\eta$ up (%)	8.0	CIBSE SHR NOM	1.50
TEST VOLTAGE (V)	DC 24V	$\eta$ down (%)	92.0	CIBSE SHR MAX	1.55



C Range: 0 - 360DEG  
 C Interval: 15.0DEG  
 Test Speed: HIGH  
 Temperature: 25.3°C  
 Operators: DAMIN  
 Test Date: 2024-07-02

$\gamma$  Range: 0 - 180DEG  
 $\gamma$  Interval: 1.0DEG  
 Test System: EVERFINE GO-2000B\_V1 SYSTEM V2.00.471  
 Humidity: 65.0%  
 Test Distance: 4.880m [K=1.0000]  
 Remarks:

**ZONAL FLUX DIAGRAM**

ZONAL FLUX DIAGRAM:

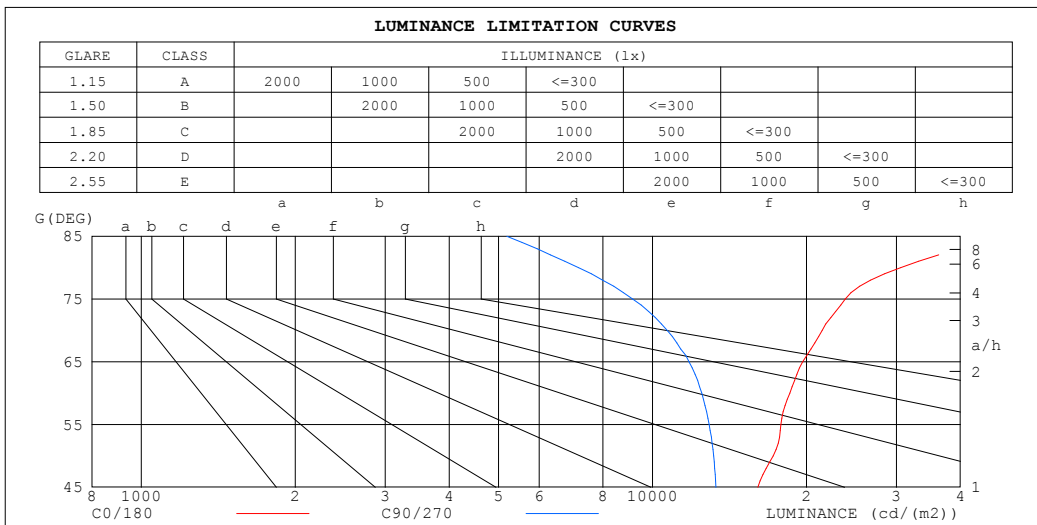
$\gamma$	C0	C45	C90	C135	C180	C225	C270	C315	$\gamma$	$\Phi$ zone	$\Phi$ total	%lum,lamp
10	108.9	106.9	105.2	105.6	107.6	105.2	104.8	106.6	0- 10	10.21	10.21	2.44,2.44
20	106.6	104.0	100.7	101.3	103.7	100.5	100.0	103.5	10- 20	29.61	39.82	9.52,9.52
30	102.3	98.49	93.00	94.61	98.19	93.60	92.17	97.85	20- 30	46.03	85.85	20.5,20.5
40	95.13	90.63	82.06	85.80	91.38	84.63	81.20	89.93	30- 40	57.79	143.6	34.3,34.3
50	88.56	79.65	67.72	74.92	79.67	73.80	66.83	78.97	40- 50	63.45	207.1	49.5,49.5
60	74.27	68.01	49.96	58.10	65.26	57.67	49.48	67.85	50- 60	61.93	269.0	64.3,64.3
70	58.72	49.14	29.22	41.25	51.67	40.95	29.37	49.20	60- 70	52.24	321.3	76.8,76.8
80	42.44	30.47	9.957	31.02	42.92	30.25	10.40	30.43	70- 80	37.76	359.0	85.8,85.8
90	32.10	19.64	0.8378	23.00	34.14	22.33	0.9388	19.86	80- 90	25.85	384.9	92,92
100	20.51	11.60	0.4557	9.013	18.88	8.927	0.4878	11.54	90-100	15.37	400.2	95.7,95.7
110	21.36	11.46	0.5457	2.498	6.379	2.480	0.5996	10.96	100-110	8.473	408.7	97.7,97.7
120	9.774	4.264	0.6819	0.8474	2.282	0.8689	0.7370	3.499	110-120	4.889	413.6	98.9,98.9
130	4.707	2.118	0.8146	0.8987	1.019	0.9206	0.8650	2.035	120-130	1.896	415.5	99.3,99.3
140	2.421	1.002	0.9404	0.9953	1.069	1.015	0.9884	1.026	130-140	1.094	416.6	99.6,99.6
150	1.111	1.078	1.066	1.104	1.149	1.115	1.106	1.088	140-150	0.6973	417.3	99.8,99.8
160	1.172	1.177	1.170	1.198	1.233	1.202	1.206	1.183	150-160	0.5294	417.8	99.9,99.9
170	1.270	1.268	1.264	1.279	1.306	1.275	1.289	1.264	160-170	0.3489	418.2	100,100
180	1.333	1.317	1.330	1.321	1.333	1.318	1.326	1.318	170-180	0.1237	418.3	100,100
DEG	LUMINOUS INTENSITY:cd									UNIT:lm		

C Range: 0 - 360DEG  
 C Interval: 15.0DEG  
 Test Speed: HIGH  
 Temperature:25.3°C  
 Operators:DAMIN  
 Test Date:2024-07-02

$\gamma$  Range: 0 - 180DEG  
 $\gamma$  Interval: 1.0DEG  
 Test System:EVERFINE GO-2000B\_V1 SYSTEM V2.00.471  
 Humidity:65.0%  
 Test Distance:4.880m [K=1.0000]  
 Remarks:

**LUMINANCE LIMITATION CURVES**

<b>NAME:</b> LED Strip	<b>TYPE:</b> Indoor lighting	<b>WEIGHT:</b> 75g
<b>SPEC.:</b> 2835 080LED	<b>DIM.:</b> 500*8*1.2MM	<b>SERIAL No.:</b> 20240627007
<b>MFR.:</b> EVERFINE	<b>SUR.:</b> 500*8MM	<b>Shielding Angle:</b>



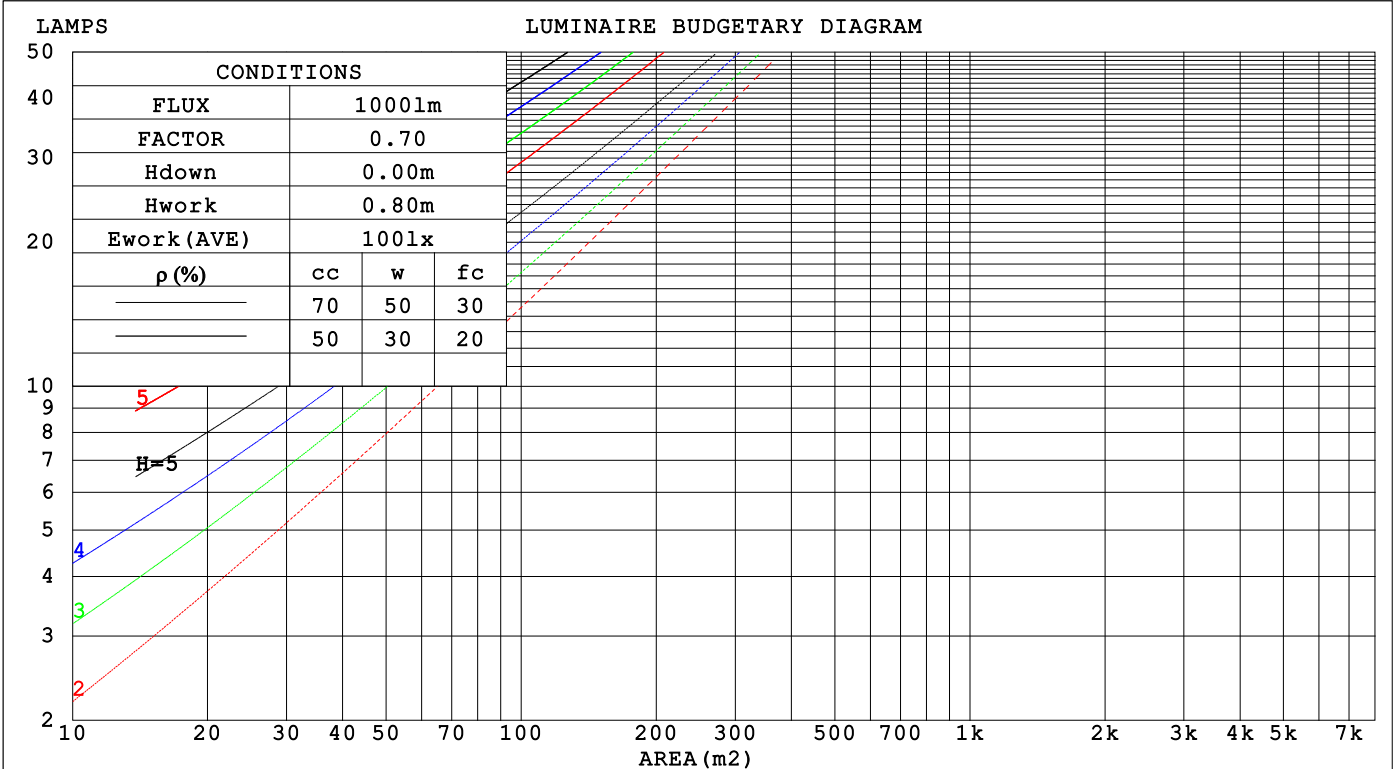
C Range: 0 - 360DEG  
 C Interval: 15.0DEG  
 Test Speed: HIGH  
 Temperature: 25.3°C  
 Operators: DAMIN  
 Test Date: 2024-07-02

γ Range: 0 - 180DEG  
 γ Interval: 1.0DEG  
 Test System: EVERFINE GO-2000B\_V1 SYSTEM V2.00.471  
 Humidity: 65.0%  
 Test Distance: 4.880m [K=1.0000]  
 Remarks:

**CU AND LUMINAIRE BUDGETARY ESTIMATE DIAGRAM**

NAME: LED Strip	TYPE: Indoor lighting	WEIGHT: 75g
SPEC.: 2835 080LED	DIM.: 500*8*1.2MM	SERIAL No.: 20240627007
MFR.: EVERFINE	SUR.: 500*8MM	Shielding Angle:

pcc	80%			70%			50%			30%			10%			0
	50%	30%	10%	50%	30%	10%	50%	30%	10%	50%	30%	10%	50%	30%	10%	0
pw																
pfc	20%			20%			20%			20%			20%			0
RCR	RCR:Room Cavity Ratio      Coefficients of Utilization(CU)															
0.0	1.17	1.17	1.17	1.13	1.13	1.13	1.07	1.07	1.07	1.00	1.00	1.00	.95	.95	.95	.92
1.0	.99	.94	.89	.96	.91	.87	.90	.86	.83	.85	.81	.79	.80	.77	.75	.72
2.0	.85	.77	.71	.82	.75	.69	.77	.71	.66	.73	.68	.64	.69	.65	.61	.58
3.0	.74	.65	.58	.72	.63	.57	.67	.60	.55	.63	.58	.53	.60	.55	.51	.48
4.0	.65	.55	.48	.63	.54	.47	.59	.52	.46	.56	.50	.44	.53	.47	.43	.40
5.0	.58	.48	.41	.56	.47	.40	.53	.45	.39	.50	.43	.38	.47	.42	.37	.34
6.0	.52	.42	.35	.50	.41	.35	.48	.40	.34	.45	.38	.33	.43	.37	.32	.30
7.0	.47	.37	.31	.45	.37	.31	.43	.35	.30	.41	.34	.29	.39	.33	.28	.26
8.0	.42	.34	.27	.41	.33	.27	.39	.32	.26	.37	.31	.26	.36	.30	.25	.23
9.0	.39	.30	.25	.38	.30	.24	.36	.29	.24	.34	.28	.23	.33	.27	.23	.21
10.0	.36	.28	.22	.35	.27	.22	.33	.26	.21	.32	.25	.21	.30	.25	.20	.19



C Range: 0 - 360DEG  
 C Interval: 15.0DEG  
 Test Speed: HIGH  
 Temperature: 25.3°C  
 Operators: DAMIN  
 Test Date: 2024-07-02

γ Range: 0 - 180DEG  
 γ Interval: 1.0DEG  
 Test System: EVERFINE GO-2000B\_V1 SYSTEM V2.00.471  
 Humidity: 65.0%  
 Test Distance: 4.880m [K=1.0000]  
 Remarks:

WEC AND CCEC

NAME: LED Strip	TYPE: Indoor lighting	WEIGHT: 75g
SPEC.: 2835 080LED	DIM.: 500*8*1.2MM	SERIAL No.: 20240627007
MFR.: EVERFINE	SUR.: 500*8MM	Shielding Angle:

$\rho_{cc}$	80%			70%			50%			30%			10%			0
$\rho_w$	50%	30%	10%	50%	30%	10%	50%	30%	10%	50%	30%	10%	50%	30%	10%	0
$\rho_{fc}$	20%			20%			20%			20%			20%			0
RCR	RCR:Room Cavity Ratio						Wall Exitance Coefficients(WEC)									
0.0																
1.0	.370	.210	.067	.360	.205	.065	.342	.196	.063	.325	.188	.060	.310	.180	.058	
2.0	.327	.179	.055	.318	.175	.054	.302	.168	.052	.287	.161	.050	.273	.155	.049	
3.0	.293	.156	.047	.286	.153	.046	.271	.147	.045	.258	.141	.043	.245	.136	.042	
4.0	.266	.138	.041	.259	.136	.040	.246	.130	.039	.234	.126	.038	.222	.121	.037	
5.0	.243	.124	.036	.236	.121	.035	.225	.117	.034	.214	.113	.034	.204	.109	.033	
6.0	.223	.112	.032	.217	.110	.032	.207	.106	.031	.197	.102	.030	.188	.099	.029	
7.0	.206	.102	.029	.201	.100	.029	.191	.097	.028	.182	.094	.027	.174	.090	.027	
8.0	.191	.094	.026	.187	.092	.026	.178	.089	.025	.170	.086	.025	.162	.083	.024	
9.0	.179	.086	.024	.174	.085	.024	.166	.082	.023	.159	.080	.023	.152	.077	.022	
10.0	.167	.080	.022	.164	.079	.022	.156	.077	.022	.149	.074	.021	.143	.072	.021	

$\rho_{cc}$	80%			70%			50%			30%			10%			0
$\rho_w$	50%	30%	10%	50%	30%	10%	50%	30%	10%	50%	30%	10%	50%	30%	10%	0
$\rho_{fc}$	20%			20%			20%			20%			20%			0
RCR	RCR:Room Cavity Ratio						Ceiling Cavity Exitance Coefficients(CCEC)									
0.0	.251	.251	.251	.215	.215	.215	.147	.147	.147	.084	.084	.084	.027	.027	.027	
1.0	.246	.217	.191	.210	.186	.164	.144	.128	.114	.083	.074	.066	.027	.024	.021	
2.0	.239	.194	.156	.204	.167	.134	.140	.115	.094	.081	.067	.055	.026	.022	.018	
3.0	.231	.177	.133	.198	.152	.115	.136	.106	.081	.079	.062	.048	.025	.020	.016	
4.0	.223	.164	.118	.192	.141	.103	.132	.099	.072	.076	.058	.043	.025	.019	.014	
5.0	.216	.154	.108	.185	.133	.094	.128	.093	.066	.074	.055	.039	.024	.018	.013	
6.0	.208	.146	.101	.179	.126	.088	.123	.088	.062	.072	.052	.037	.023	.017	.012	
7.0	.201	.139	.095	.173	.120	.083	.120	.084	.059	.069	.050	.035	.022	.016	.012	
8.0	.194	.133	.091	.167	.115	.079	.116	.081	.056	.067	.048	.034	.022	.016	.011	
9.0	.188	.128	.088	.162	.111	.077	.112	.078	.054	.065	.046	.032	.021	.015	.011	
10.0	.182	.124	.085	.157	.108	.074	.109	.076	.053	.064	.045	.032	.021	.015	.010	

C Range: 0 - 360DEG  
 C Interval: 15.0DEG  
 Test Speed: HIGH  
 Temperature:25.3°C  
 Operators:DAMIN  
 Test Date:2024-07-02

$\gamma$  Range: 0 - 180DEG  
 $\gamma$  Interval: 1.0DEG  
 Test System:EVERFINE GO-2000B\_V1 SYSTEM V2.00.471  
 Humidity:65.0%  
 Test Distance:4.880m [K=1.0000]  
 Remarks:

**UGR(Unified Glare Rating) Table**

NAME: LED Strip	TYPE: Indoor lighting	WEIGHT: 75g
SPEC.: 2835 080LED	DIM.: 500*8*1.2MM	SERIAL No.: 20240627007
MFR.: EVERFINE	SUR.: 500*8MM	Shielding Angle:

ceiling/cavity	0.7	0.7	0.5	0.5	0.3	0.7	0.7	0.5	0.5	0.3
walls	0.5	0.3	0.5	0.3	0.3	0.5	0.3	0.5	0.3	0.3
working plane	0.2	0.2	0.2	0.2	0.2	0.2	0.2	0.2	0.2	0.2
Room dimensions	Viewed crosswise					Viewed endwise				
x = 2H y = 2H	26.0	27.5	26.4	27.8	28.2	24.4	25.9	24.7	26.2	26.6
3H	28.3	29.7	28.7	30.0	30.4	25.8	27.2	26.2	27.6	28.0
4H	29.4	30.7	29.8	31.1	31.6	26.3	27.6	26.7	28.0	28.4
6H	30.6	31.8	31.0	32.3	32.7	26.5	27.8	27.0	28.2	28.7
8H	31.3	32.5	31.7	32.9	33.4	26.6	27.8	27.1	28.2	28.7
12H	32.1	33.3	32.6	33.7	34.2	26.6	27.8	27.1	28.2	28.7
4H 2H	26.6	27.9	27.0	28.3	28.7	25.4	26.7	25.8	27.1	27.6
3H	29.1	30.3	29.6	30.7	31.2	27.1	28.2	27.5	28.7	29.1
4H	30.4	31.5	30.9	31.9	32.4	27.7	28.8	28.2	29.2	29.7
6H	31.8	32.8	32.3	33.2	33.8	28.1	29.0	28.6	29.5	30.1
8H	32.6	33.5	33.1	34.0	34.6	28.2	29.1	28.7	29.6	30.2
12H	33.6	34.4	34.1	34.9	35.5	28.2	29.1	28.8	29.6	30.2
8H 4H	30.7	31.6	31.2	32.1	32.7	28.4	29.3	29.0	29.8	30.4
6H	32.4	33.1	32.9	33.7	34.3	29.1	29.9	29.7	30.4	31.0
8H	33.4	34.0	34.0	34.6	35.2	29.4	30.1	30.0	30.6	31.2
12H	34.6	35.2	35.2	35.8	36.4	29.5	30.1	30.1	30.7	31.4
12H 4H	30.7	31.5	31.2	32.1	32.6	28.6	29.5	29.2	30.0	30.6
6H	32.4	33.1	33.0	33.7	34.3	29.5	30.2	30.1	30.7	31.4
8H	33.6	34.2	34.2	34.7	35.4	29.9	30.5	30.5	31.1	31.7
Variations with the observer position at spacings(CIE Pub.117):										
S = 1.0H	+ 0.1 / - 0.1					+ 0.1 / - 0.2				
1.5H	+ 0.2 / - 0.3					+ 0.2 / - 0.3				
2.0H	+ 0.2 / - 0.4					+ 0.2 / - 0.5				

CIE Pub.117, 418.3 lm Total Lamp Luminous Flux Correct (8log(F/F0) = -3.0)  
 Area: 0.008 m2

C Range: 0 - 360DEG  
 C Interval: 15.0DEG  
 Test Speed: HIGH  
 Temperature:25.3°C  
 Operators:DAMIN  
 Test Date:2024-07-02

γ Range: 0 - 180DEG  
 γ Interval: 1.0DEG  
 Test System:EVERFINE GO-2000B\_V1 SYSTEM V2.00.471  
 Humidity:65.0%  
 Test Distance:4.880m [K=1.0000]  
 Remarks:

**UTILIZATION FACTORS TABLE**

NAME: LED Strip	TYPE: Indoor lighting	WEIGHT: 75g
SPEC.: 2835 080LED	DIM.: 500*8*1.2MM	SERIAL No.: 20240627007
MFR.: EVERFINE	SUR.: 500*8MM	Shielding Angle:

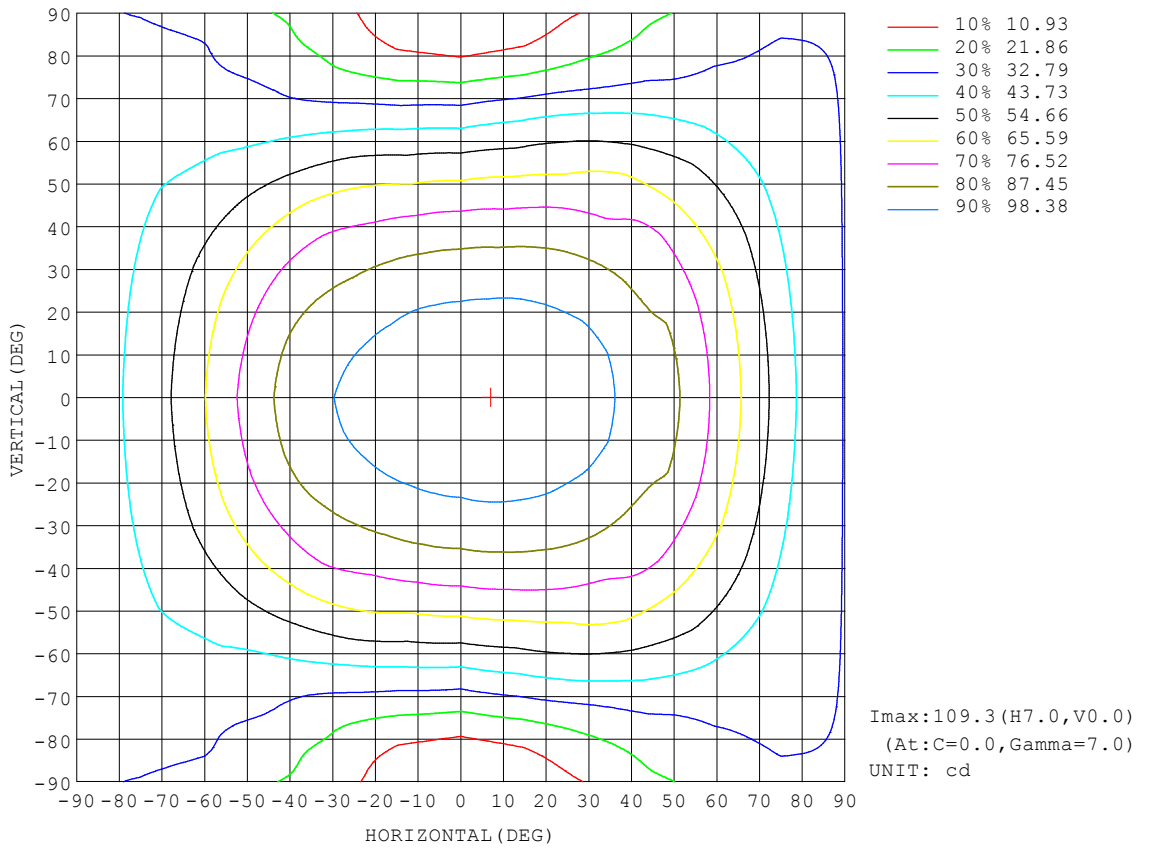
REFLECTANCE										
Ceiling	0.8	0.8	0.8	0.7	0.7	0.7	0.5	0.5	0.5	0
Walls	0.7	0.5	0.3	0.7	0.5	0.3	0.7	0.5	0.3	0
Working plane	0.2	0.2	0.2	0.2	0.2	0.2	0.2	0.2	0.2	0
ROOM INDEX	UTILIZATION FACTORS (PERCENT) $k(RI) \times RCR = 5$									
k = 0.60	51	39	32	50	39	32	49	38	31	25
0.80	61	48	40	60	48	40	57	47	39	32
1.00	69	56	48	67	56	48	65	57	47	39
1.25	76	64	56	74	63	55	71	61	54	46
1.50	81	70	61	79	68	61	75	66	59	50
2.00	88	78	70	86	76	69	81	74	67	58
2.50	93	83	76	90	81	75	85	78	72	62
3.00	96	88	81	93	86	79	88	82	77	66
4.00	101	93	87	98	91	86	92	87	82	71
5.00	104	97	92	100	95	90	95	90	86	74
ROOM INDEX	UF(total)									Direct
According to DIN EN 13032-2 2004			Suspended				SHRNOM = 1.25			

C Range: 0 - 360DEG  
 C Interval: 15.0DEG  
 Test Speed: HIGH  
 Temperature: 25.3°C  
 Operators: DAMIN  
 Test Date: 2024-07-02

$\gamma$  Range: 0 - 180DEG  
 $\gamma$  Interval: 1.0DEG  
 Test System: EVERFINE GO-2000B\_V1 SYSTEM V2.00.471  
 Humidity: 65.0%  
 Test Distance: 4.880m [K=1.0000]  
 Remarks:

**ISOCANDELA DIAGRAM**

NAME: LED Strip	TYPE: Indoor lighting	WEIGHT: 75g
SPEC.: 2835 080LED	DIM.: 500*8*1.2MM	SERIAL No.: 20240627007
MFR.: EVERFINE	SUR.: 500*8MM	Shielding Angle:



C Range: 0 - 360DEG  
 C Interval: 15.0DEG  
 Test Speed: HIGH  
 Temperature:25.3°C  
 Operators:DAMIN  
 Test Date:2024-07-02

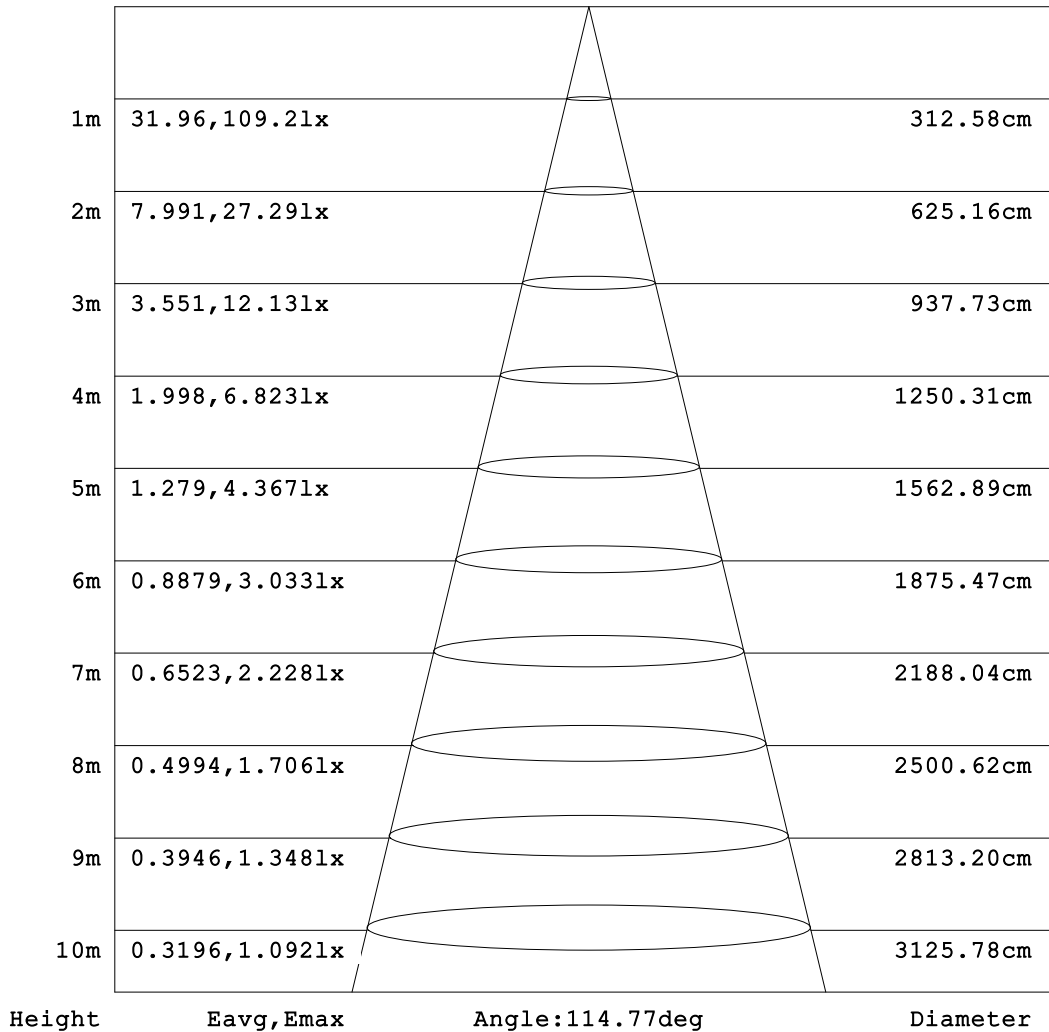
γ Range: 0 - 180DEG  
 γ Interval: 1.0DEG  
 Test System:EVERFINE GO-2000B\_V1 SYSTEM V2.00.471  
 Humidity:65.0%  
 Test Distance:4.880m [K=1.0000]  
 Remarks:



**AAI Figure**

NAME: LED Strip	TYPE: Indoor lighting	WEIGHT: 75g
SPEC.: 2835 080LED	DIM.: 500*8*1.2MM	SERIAL No.: 20240627007
MFR.: EVERFINE	SUR.: 500*8MM	Shielding Angle:

Flux out:257.2 lm



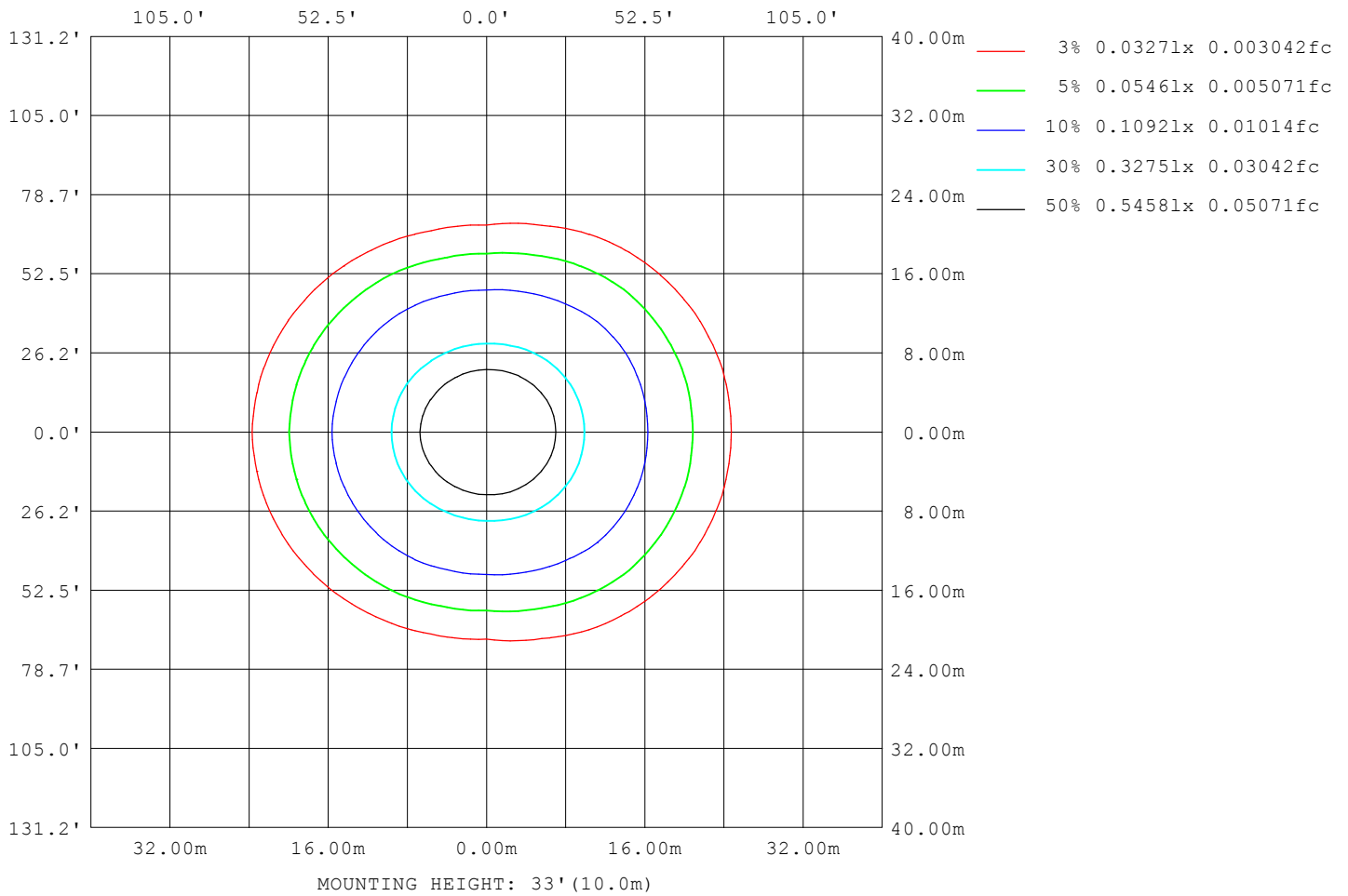
Note: The Curves indicate the illuminated area and the average illumination when the luminaire is at different distance.

C Range: 0 - 360DEG  
 C Interval: 15.0DEG  
 Test Speed: HIGH  
 Temperature: 25.3°C  
 Operators: DAMIN  
 Test Date: 2024-07-02

γ Range: 0 - 180DEG  
 γ Interval: 1.0DEG  
 Test System: EVERFINE GO-2000B\_V1 SYSTEM V2.00.471  
 Humidity: 65.0%  
 Test Distance: 4.880m [K=1.0000]  
 Remarks:

**ISOLUX DIAGRAM**

NAME: LED Strip	TYPE: Indoor lighting	WEIGHT: 75g
SPEC.: 2835 080LED	DIM.: 500*8*1.2MM	SERIAL No.: 20240627007
MFR.: EVERFINE	SUR.: 500*8MM	Shielding Angle:



C Range: 0 - 360DEG  
 C Interval: 15.0DEG  
 Test Speed: HIGH  
 Temperature: 25.3°C  
 Operators: DAMIN  
 Test Date: 2024-07-02

γ Range: 0 - 180DEG  
 γ Interval: 1.0DEG  
 Test System: EVERFINE GO-2000B\_V1 SYSTEM V2.00.471  
 Humidity: 65.0%  
 Test Distance: 4.880m [K=1.0000]  
 Remarks:

LED Avg.L Report

NAME: LED Strip	TYPE: Indoor lighting	WEIGHT: 75g
SPEC.: 2835 080LED	DIM.: 500*8*1.2MM	SERIAL No.: 20240627007
MFR.: EVERFINE	SUR.: 500*8MM	Shielding Angle:

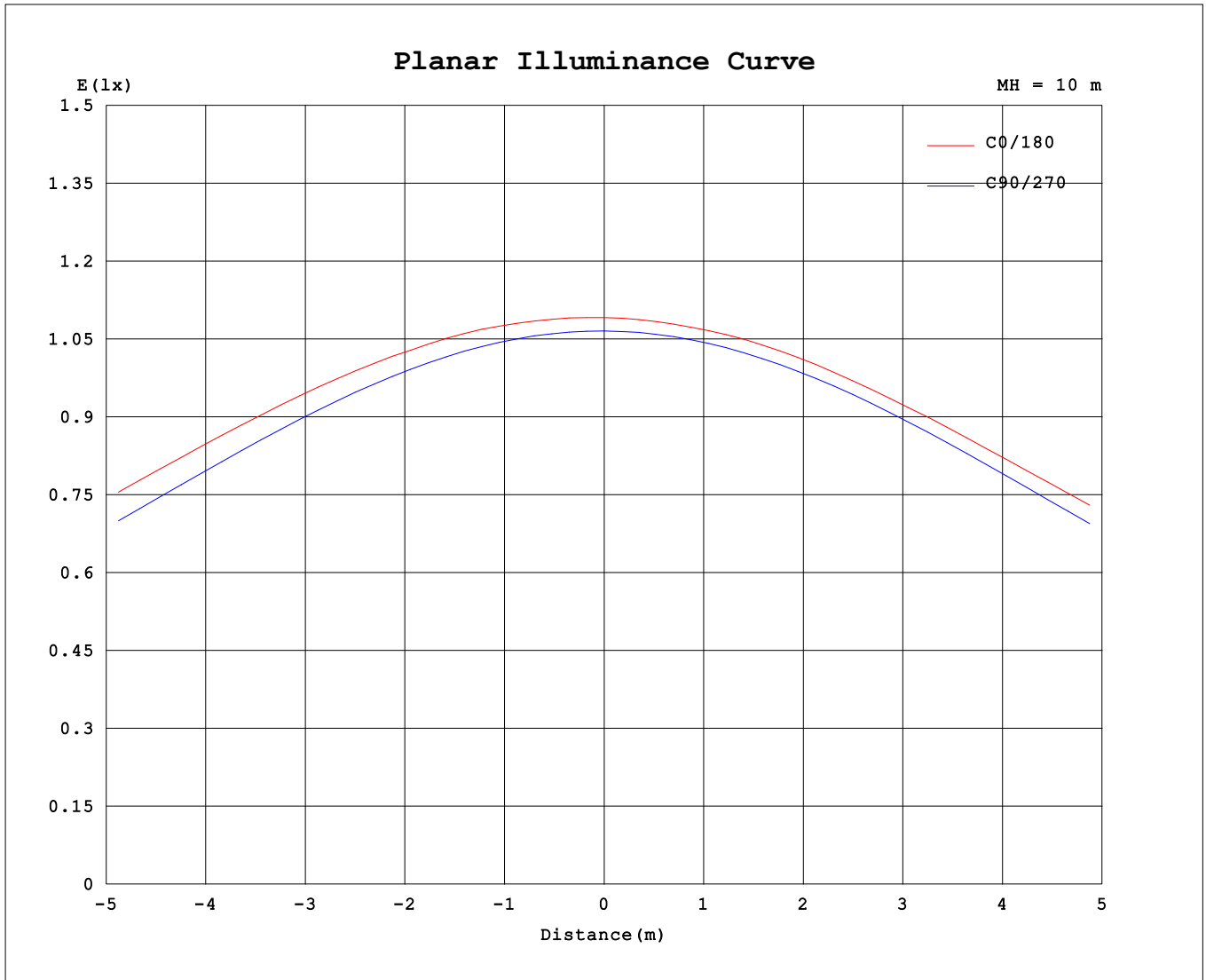
AvgL	cd/m2
L_0~180 (65) av	18469
L_0~180 (75) av	23245
L_0~180 (85) av	55334
L_90~270 (65) av	11763
L_90~270 (75) av	9204
L_90~270 (85) av	5555
L_45 (65) av	15993
L_45 (75) av	17904
L_45 (85) av	36581

Standard: GB/T 29293-2012

C Range: 0 - 360DEG  
 C Interval: 15.0DEG  
 Test Speed: HIGH  
 Temperature:25.3°C  
 Operators:DAMIN  
 Test Date:2024-07-02

γ Range: 0 - 180DEG  
 γ Interval: 1.0DEG  
 Test System:EVERFINE GO-2000B\_V1 SYSTEM V2.00.471  
 Humidity:65.0%  
 Test Distance:4.880m [K=1.0000]  
 Remarks:

**Planar Illuminance Curve**



C Range: 0 - 360DEG  
 C Interval: 15.0DEG  
 Test Speed: HIGH  
 Temperature: 25.3°C  
 Operators: DAMIN  
 Test Date: 2024-07-02

γ Range: 0 - 180DEG  
 γ Interval: 1.0DEG  
 Test System: EVERFINE GO-2000B\_V1 SYSTEM V2.00.471  
 Humidity: 65.0%  
 Test Distance: 4.880m [K=1.0000]  
 Remarks:

LUMINOUS DISTRIBUTION INTENSITY DATA

NAME: LED Strip	TYPE: Indoor lighting	WEIGHT: 75g
SPEC.: 2835 080LED	DIM.: 500*8*1.2MM	SERIAL No.: 20240627007
MFR.: EVERFINE	SUR.: 500*8MM	Shielding Angle:

Table--1

UNIT: cd

C (DEG) \ γ (DEG)	0	15	30	45	60	75	90	105	120	135	150	165	180	195	210	225	240	255	270
0	109	109	108	107	107	107	107	107	107	107	108	109	109	109	108	107	107	107	107
5	109	109	108	107	107	107	106	106	106	107	107	108	109	108	107	106	106	106	106
10	109	109	107	107	106	106	105	105	105	106	106	107	108	107	106	105	105	105	105
15	108	108	106	106	105	104	103	103	103	104	104	105	106	105	104	103	103	103	103
20	107	106	105	104	103	102	101	101	101	101	102	103	104	102	101	101	100	100.0	100
25	105	104	103	102	99.9	98.5	97.2	97.1	97.4	98.3	99.3	101	101	99.8	98.5	97.4	96.9	96.4	96.5
30	102	102	100	98.5	96.4	94.6	93.0	92.9	93.3	94.6	96.1	97.4	98.2	96.7	95.3	93.6	92.7	92.1	92.2
35	99.0	98.9	97.2	94.8	92.1	89.8	87.9	87.9	88.7	90.5	92.5	94.1	94.9	93.3	91.6	89.4	88.0	87.1	87.1
40	95.1	95.3	93.3	90.6	87.2	84.2	82.1	82.1	83.2	85.8	88.2	90.4	91.4	89.7	87.5	84.6	82.4	81.2	81.2
45	90.8	90.5	88.4	85.4	81.6	77.8	75.3	75.5	77.4	81.1	83.5	85.0	86.0	84.4	83.0	79.9	76.5	74.5	74.6
50	88.6	87.9	83.9	79.7	75.2	70.6	67.7	67.9	71.2	74.9	76.6	78.7	79.7	78.1	76.2	73.8	70.1	67.1	66.8
55	81.8	82.3	80.2	74.2	67.9	62.4	59.2	59.9	63.9	66.9	69.4	71.8	73.0	71.3	68.8	66.3	62.8	59.1	58.5
60	74.3	73.9	71.4	68.0	60.8	53.9	50.0	51.1	55.2	58.1	61.8	64.0	65.3	63.9	61.3	57.7	54.4	50.4	49.5
65	66.5	65.9	63.0	58.5	52.1	44.7	39.9	41.5	45.4	49.9	53.8	57.0	58.4	57.0	53.5	49.5	44.9	40.9	39.7
70	58.7	58.1	55.0	49.1	42.1	34.3	29.2	31.4	35.9	41.3	46.8	50.4	51.7	50.3	46.4	41.0	35.6	30.8	29.4
75	49.3	48.8	45.1	39.2	30.9	23.7	18.9	21.8	27.0	35.2	41.8	45.6	46.9	45.4	41.1	34.5	26.9	21.3	19.2
80	42.4	40.7	36.3	30.5	22.5	14.3	9.96	13.3	21.6	31.0	37.7	41.6	42.9	41.4	37.1	30.3	21.0	13.2	10.4
85	37.5	36.0	31.3	24.6	16.4	7.94	3.62	7.76	17.5	26.8	33.9	38.3	39.7	38.2	33.4	26.0	17.1	7.62	4.13
90	32.1	30.8	26.2	19.6	11.6	4.45	0.84	5.56	15.1	23.0	28.3	32.3	34.1	32.3	28.5	22.3	14.5	5.14	0.94
95	23.1	21.8	18.3	13.7	8.67	3.62	0.46	2.93	8.60	14.9	20.4	24.4	26.0	24.3	20.6	14.8	8.68	2.78	0.51
100	20.5	19.2	15.3	11.6	7.93	2.66	0.46	0.79	5.66	9.01	12.9	16.8	18.9	17.0	13.6	8.93	5.79	0.64	0.49
105	20.2	19.2	16.4	12.3	6.63	1.35	0.48	0.59	1.87	5.52	7.68	8.91	9.66	8.99	7.95	5.44	1.86	0.58	0.54
110	21.4	20.3	17.4	11.5	4.30	0.80	0.55	0.60	0.81	2.50	4.30	5.70	6.38	5.80	4.44	2.48	0.86	0.62	0.60
115	18.5	17.1	12.1	6.34	2.67	0.68	0.61	0.64	0.73	1.22	2.47	3.37	3.79	3.41	2.54	1.16	0.75	0.68	0.67
120	9.77	8.88	6.42	4.26	1.90	0.71	0.68	0.71	0.74	0.85	1.23	1.91	2.28	1.95	1.26	0.87	0.79	0.74	0.74
125	6.17	5.83	4.65	3.14	1.15	0.76	0.75	0.77	0.79	0.86	0.94	1.05	1.19	1.07	0.95	0.88	0.84	0.80	0.80
130	4.71	4.46	3.54	2.12	0.88	0.82	0.81	0.84	0.85	0.90	0.94	0.99	1.02	1.01	0.97	0.92	0.90	0.86	0.87
135	3.52	3.29	2.41	1.29	0.90	0.88	0.88	0.90	0.90	0.95	0.97	1.01	1.04	1.01	1.00	0.97	0.95	0.93	0.93
140	2.42	2.16	1.48	1.00	0.94	0.94	0.94	0.96	0.96	1.00	1.01	1.04	1.07	1.05	1.05	1.01	1.01	0.99	0.99
145	1.40	1.26	1.08	1.03	1.00	1.01	1.00	1.02	1.02	1.05	1.06	1.08	1.11	1.09	1.09	1.07	1.07	1.05	1.05
150	1.11	1.11	1.08	1.08	1.06	1.07	1.07	1.08	1.08	1.10	1.11	1.13	1.15	1.13	1.13	1.12	1.12	1.11	1.11
155	1.12	1.15	1.13	1.13	1.11	1.12	1.12	1.14	1.13	1.15	1.15	1.17	1.19	1.17	1.18	1.16	1.17	1.15	1.16
160	1.17	1.19	1.17	1.18	1.16	1.18	1.17	1.19	1.18	1.20	1.19	1.21	1.23	1.21	1.22	1.20	1.21	1.20	1.21
165	1.22	1.23	1.22	1.22	1.21	1.23	1.22	1.24	1.22	1.24	1.23	1.25	1.27	1.24	1.25	1.24	1.25	1.24	1.25
170	1.27	1.28	1.26	1.27	1.26	1.27	1.26	1.28	1.27	1.28	1.27	1.28	1.31	1.27	1.28	1.27	1.29	1.28	1.29
175	1.31	1.31	1.29	1.31	1.29	1.31	1.30	1.31	1.30	1.31	1.30	1.32	1.33	1.30	1.31	1.30	1.31	1.30	1.32
180	1.33	1.33	1.32	1.32	1.32	1.32	1.33	1.33	1.32	1.32	1.32	1.32	1.33	1.32	1.32	1.32	1.32	1.32	1.33

C Range: 0 - 360DEG  
 C Interval: 15.0DEG  
 Test Speed: HIGH  
 Temperature:25.3°C  
 Operators:DAMIN  
 Test Date:2024-07-02

γ Range: 0 - 180DEG  
 γ Interval: 1.0DEG  
 Test System:EVERFINE GO-2000B\_V1 SYSTEM V2.00.471  
 Humidity:65.0%  
 Test Distance:4.880m [K=1.0000]  
 Remarks:

LUMINOUS DISTRIBUTION INTENSITY DATA

NAME: LED Strip	TYPE: Indoor lighting	WEIGHT: 75g
SPEC.: 2835 080LED	DIM.: 500*8*1.2MM	SERIAL No.: 20240627007
MFR.: EVERFINE	SUR.: 500*8MM	Shielding Angle:

Table--2

UNIT: cd

C (DEG) \ γ (DEG)	285	300	315	330	345														
0	107	107	107	108	109														
5	106	107	107	108	109														
10	105	106	107	108	109														
15	103	104	105	107	108														
20	101	102	103	105	107														
25	97.5	99.2	101	103	105														
30	93.5	95.7	97.8	100	102														
35	88.6	91.4	94.1	97.1	98.8														
40	82.9	86.5	89.9	93.2	95.3														
45	76.6	80.9	84.7	88.3	90.3														
50	69.5	74.7	79.0	83.6	87.6														
55	61.7	67.3	73.6	80.4	82.1														
60	53.4	60.5	67.8	71.8	73.8														
65	44.6	52.1	58.4	63.1	66.0														
70	34.3	42.3	49.2	55.2	58.4														
75	23.8	31.4	39.4	45.4	49.1														
80	14.5	22.9	30.4	36.6	40.8														
85	8.34	16.7	24.6	31.5	35.9														
90	4.47	12.0	19.9	26.8	31.0														
95	3.53	8.79	13.5	18.5	22.0														
100	2.84	6.43	11.5	15.7	19.2														
105	1.37	6.64	10.2	13.0	18.9														
110	0.96	4.46	11.0	16.3	17.4														
115	0.72	2.64	6.46	12.8	16.9														
120	0.75	2.01	3.50	6.76	8.80														
125	0.80	1.31	2.89	4.68	5.65														
130	0.86	0.92	2.03	3.42	4.30														
135	0.92	0.94	1.35	2.23	3.21														
140	0.98	0.99	1.03	1.43	2.19														
145	1.03	1.04	1.04	1.08	1.28														
150	1.09	1.10	1.09	1.10	1.12														
155	1.14	1.15	1.14	1.15	1.14														
160	1.19	1.20	1.18	1.19	1.19														
165	1.23	1.24	1.22	1.24	1.23														
170	1.27	1.28	1.26	1.28	1.27														
175	1.30	1.31	1.30	1.31	1.30														
180	1.32	1.32	1.32	1.32	1.33														

C Range: 0 - 360DEG  
 C Interval: 15.0DEG  
 Test Speed: HIGH  
 Temperature:25.3°C  
 Operators:DAMIN  
 Test Date:2024-07-02

γ Range: 0 - 180DEG  
 γ Interval: 1.0DEG  
 Test System:EVERFINE GO-2000B\_V1 SYSTEM V2.00.471  
 Humidity:65.0%  
 Test Distance:4.880m [K=1.0000]  
 Remarks: