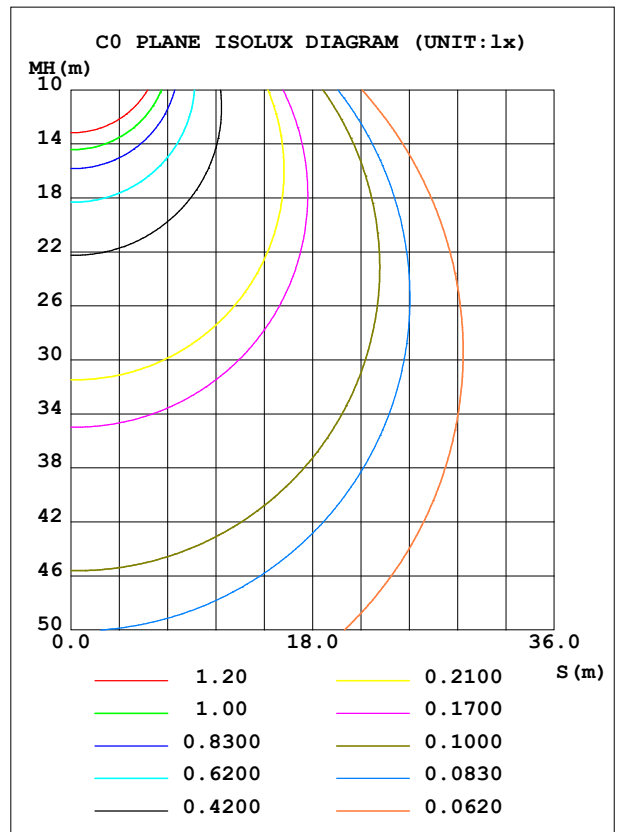
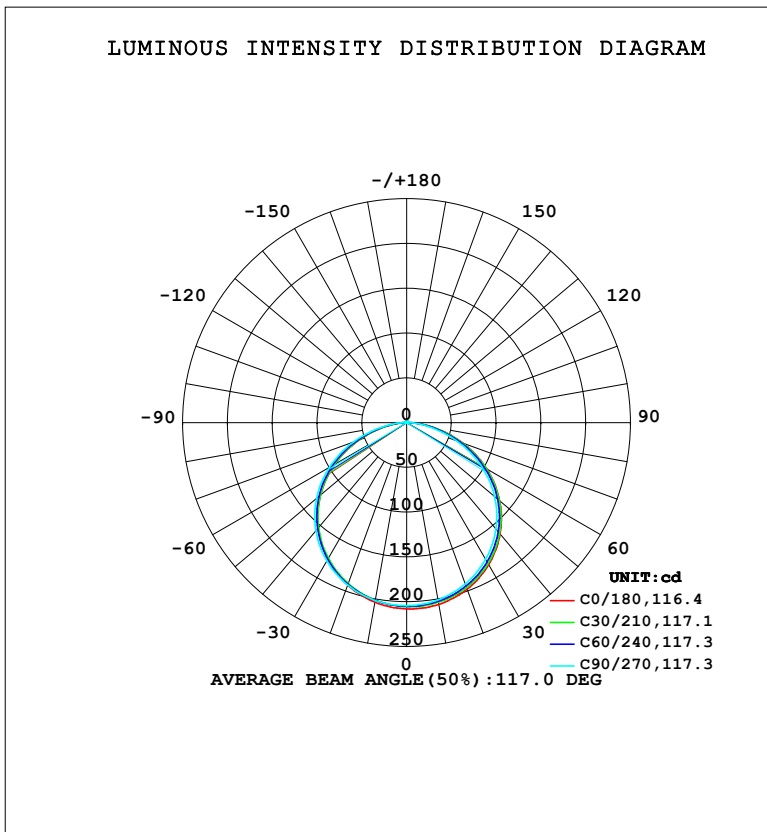


LUMINAIRE PHOTOMETRIC TEST REPORT

NAME: LED Strip	TYPE: Indoor lighting	WEIGHT: 75g
SPEC.: 2835 128LED	DIM.: 500*8*1.2MM	SERIAL No.: 20240402001
MFR.: EVERFINE	SUR.: 500*8MM	Shielding Angle:

DATA OF LAMP		PHOTOMETRIC DATA			
MODEL: 2835-24 (WCP) -SR-PG-CV-HE-EP		Imax (cd)	208.2	S/MH (C0/180)	1.26
NOMINAL POWER (W)	4.64119	LOR (%)	100.0	S/MH (C90/270)	1.30
RATED VOLTAGE (V)	DC 24V	TOTAL FLUX (lm)	626.79	η UP, DN (C0-180)	0.7,49.1
NOMINAL FLUX (lm)	626.791	CIE CLASS	DIRECT	η UP, DN (C180-360)	0.7,49.6
LAMPS INSIDE	1	η up (%)	1.4	CIBSE SHR NOM	1.25
TEST VOLTAGE (V)	DC 24V	η down (%)	98.6	CIBSE SHR MAX	1.35



C Range: 0 - 360DEG
 C Interval: 15.0DEG
 Test Speed: HIGH
 Temperature: 25.3°C
 Operators: DAMIN
 Test Date: 2024-04-02

γ Range: 0 - 180DEG
 γ Interval: 1.0DEG
 Test System: EVERFINE GO-2000B_V1 SYSTEM V2.00.471
 Humidity: 65.0%
 Test Distance: 4.880m [K=1.0000]
 Remarks:

ZONAL FLUX DIAGRAM

ZONAL FLUX DIAGRAM:

γ	C0	C45	C90	C135	C180	C225	C270	C315	γ	Φ zone	Φ total	%lum,lamp
10	206.1	203.1	201.0	201.0	203.6	200.9	201.6	203.7	0- 10	19.49	19.49	3.11,3.11
20	197.8	195.0	191.6	190.6	193.0	190.8	193.0	195.9	10- 20	56.17	75.66	12.1,12.1
30	183.2	180.9	176.3	174.4	176.2	174.9	178.3	182.1	20- 30	86.08	161.7	25.8,25.8
40	162.4	160.5	155.1	152.2	153.7	153.2	157.7	162.0	30- 40	105.4	267.2	42.6,42.6
50	135.6	134.2	128.1	124.5	125.6	126.0	131.4	136.0	40- 50	111.4	378.5	60.4,60.4
60	103.3	102.0	95.68	91.53	92.61	93.71	99.46	104.1	50- 60	102.4	480.9	76.7,76.7
70	66.56	65.01	59.13	54.97	55.95	57.54	62.89	67.46	60- 70	78.99	559.9	89.3,89.3
80	29.32	27.96	23.52	20.64	21.09	22.55	26.96	30.29	70- 80	45.22	605.1	96.5,96.5
90	3.558	3.031	1.448	1.943	1.852	1.869	1.919	4.540	80- 90	13.13	618.3	98.6,98.6
100	0.6938	0.7043	0.7192	0.7346	0.7870	0.7577	0.7451	0.7229	90-100	1.147	619.4	98.8,98.8
110	0.8716	0.9081	0.9635	0.9768	1.009	0.9997	0.9932	0.9275	100-110	0.8799	620.3	99,99
120	1.124	1.167	1.235	1.236	1.268	1.260	1.262	1.188	110-120	1.077	621.4	99.1,99.1
130	1.378	1.427	1.495	1.496	1.523	1.516	1.522	1.444	120-130	1.205	622.6	99.3,99.3
140	1.633	1.689	1.745	1.744	1.767	1.762	1.765	1.698	130-140	1.237	623.8	99.5,99.5
150	1.887	1.937	1.975	1.978	1.997	1.989	1.992	1.939	140-150	1.156	625.0	99.7,99.7
160	2.135	2.155	2.177	2.187	2.215	2.189	2.192	2.147	150-160	0.9556	625.9	99.9,99.9
170	2.344	2.338	2.344	2.360	2.397	2.355	2.356	2.326	160-170	0.6395	626.6	100,100
180	2.477	2.451	2.451	2.454	2.481	2.450	2.453	2.448	170-180	0.2285	626.8	100,100
DEG	LUMINOUS INTENSITY:cd									UNIT:lm		

Conical surface Flux(90deg): 323.03 lm

%lum = 51.5%

%lamp = 51.5%

Conical surface Flux(120deg): 480.93 lm

%lum = 76.7%

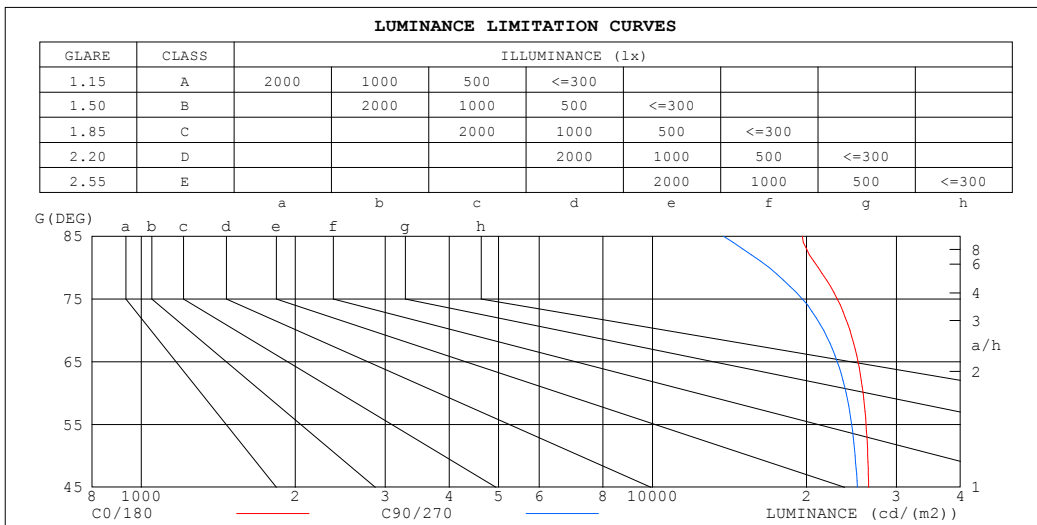
%lamp = 76.7%

C Range: 0 - 360DEG
 C Interval: 15.0DEG
 Test Speed: HIGH
 Temperature:25.3°C
 Operators:DAMIN
 Test Date:2024-04-02

γ Range: 0 - 180DEG
 γ Interval: 1.0DEG
 Test System:EVERFINE GO-2000B_V1 SYSTEM V2.00.471
 Humidity:65.0%
 Test Distance:4.880m [K=1.0000]
 Remarks:

LUMINANCE LIMITATION CURVES

NAME: LED Strip	TYPE: Indoor lighting	WEIGHT: 75g
SPEC.: 2835 128LED	DIM.: 500*8*1.2MM	SERIAL No.: 20240402001
MFR.: EVERFINE	SUR.: 500*8MM	Shielding Angle:



LUMINANCE cd/(m2)		
G (DEG)	C0/180	C90/270
85	19647	13764
80	21103	16928
75	22990	19641
70	24327	21611
65	25231	22988
60	25814	23921
55	26164	24517
50	26364	24909
45	26466	25154

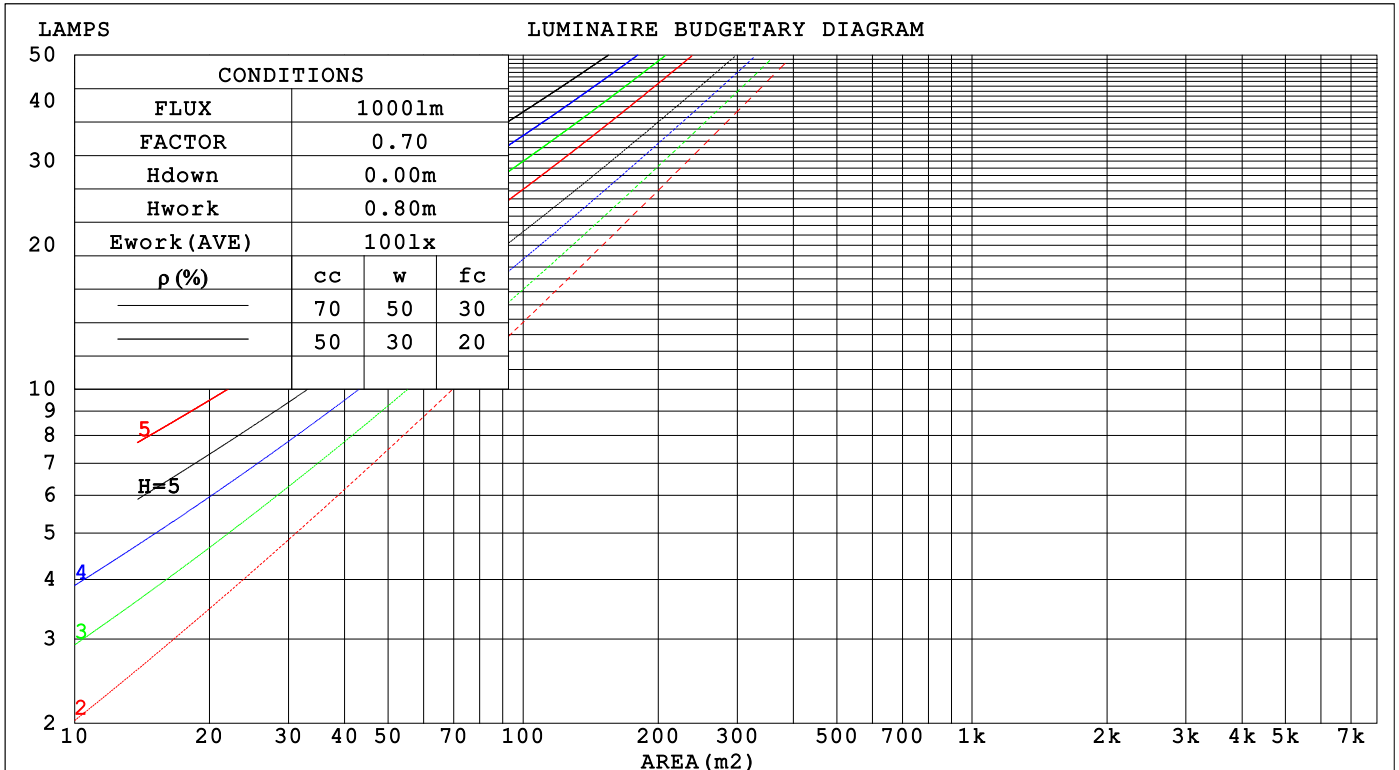
C Range: 0 - 360DEG
 C Interval: 15.0DEG
 Test Speed: HIGH
 Temperature: 25.3°C
 Operators: DAMIN
 Test Date: 2024-04-02

γ Range: 0 - 180DEG
 γ Interval: 1.0DEG
 Test System: EVERFINE GO-2000B_V1 SYSTEM V2.00.471
 Humidity: 65.0%
 Test Distance: 4.880m [K=1.0000]
 Remarks:

CU AND LUMINAIRE BUDGETARY ESTIMATE DIAGRAM

NAME: LED Strip	TYPE: Indoor lighting	WEIGHT: 75g
SPEC.: 2835 128LED	DIM.: 500*8*1.2MM	SERIAL No.: 20240402001
MFR.: EVERFINE	SUR.: 500*8MM	Shielding Angle:

ρcc	80%			70%			50%			30%			10%			0
	50%	30%	10%	50%	30%	10%	50%	30%	10%	50%	30%	10%	50%	30%	10%	
ρw	50%	30%	10%	50%	30%	10%	50%	30%	10%	50%	30%	10%	50%	30%	10%	0
ρfc	20%			20%			20%			20%			20%			0
RCR	RCR:Room Cavity Ratio Coefficients of Utilization(CU)															
0.0	1.19	1.19	1.19	1.16	1.16	1.16	1.10	1.10	1.10	1.05	1.05	1.05	1.01	1.01	1.01	.99
1.0	1.03	.99	.95	1.01	.97	.93	.96	.93	.90	.92	.90	.87	.88	.86	.84	.82
2.0	.90	.83	.77	.88	.81	.76	.84	.79	.74	.80	.76	.72	.77	.73	.70	.68
3.0	.79	.70	.64	.77	.69	.63	.74	.67	.62	.71	.65	.60	.68	.63	.59	.57
4.0	.69	.60	.54	.68	.60	.53	.65	.58	.52	.63	.56	.51	.60	.55	.51	.48
5.0	.62	.53	.46	.61	.52	.46	.58	.51	.45	.56	.50	.44	.54	.48	.44	.42
6.0	.56	.47	.40	.55	.46	.40	.53	.45	.39	.51	.44	.39	.49	.43	.38	.36
7.0	.50	.41	.35	.49	.41	.35	.48	.40	.35	.46	.39	.34	.45	.39	.34	.32
8.0	.46	.37	.31	.45	.37	.31	.44	.36	.31	.42	.36	.31	.41	.35	.30	.28
9.0	.42	.34	.28	.41	.33	.28	.40	.33	.28	.39	.32	.28	.38	.32	.27	.25
10.0	.39	.31	.25	.38	.31	.25	.37	.30	.25	.36	.30	.25	.35	.29	.25	.23



C Range: 0 - 360DEG
 C Interval: 15.0DEG
 Test Speed: HIGH
 Temperature: 25.3°C
 Operators: DAMIN
 Test Date: 2024-04-02

γ Range: 0 - 180DEG
 γ Interval: 1.0DEG
 Test System: EVERFINE GO-2000B_V1 SYSTEM V2.00.471
 Humidity: 65.0%
 Test Distance: 4.880m [K=1.0000]
 Remarks:

WEC AND CCEC

NAME: LED Strip	TYPE: Indoor lighting	WEIGHT: 75g
SPEC.: 2835 128LED	DIM.: 500*8*1.2MM	SERIAL No.: 20240402001
MFR.: EVERFINE	SUR.: 500*8MM	Shielding Angle:

ρ_{CC}	80%			70%			50%			30%			10%			0
ρ_w	50%	30%	10%	50%	30%	10%	50%	30%	10%	50%	30%	10%	50%	30%	10%	0
ρ_{fc}	20%			20%			20%			20%			20%			0
RCR	RCR:Room Cavity Ratio						Wall Exitance Coefficients (WEC)									
0.0																
1.0	.315	.179	.057	.308	.176	.056	.294	.168	.054	.281	.162	.052	.269	.156	.050	
2.0	.296	.162	.050	.289	.159	.049	.277	.154	.048	.265	.149	.047	.255	.144	.045	
3.0	.273	.145	.044	.267	.143	.043	.256	.139	.042	.246	.135	.041	.236	.131	.041	
4.0	.252	.131	.038	.247	.129	.038	.237	.126	.037	.228	.122	.037	.219	.119	.036	
5.0	.232	.118	.034	.228	.117	.034	.219	.114	.034	.211	.111	.033	.203	.109	.033	
6.0	.215	.108	.031	.211	.107	.031	.203	.104	.030	.196	.102	.030	.189	.100	.030	
7.0	.200	.099	.028	.197	.098	.028	.190	.096	.028	.183	.094	.027	.177	.092	.027	
8.0	.187	.091	.026	.184	.090	.026	.177	.089	.025	.171	.087	.025	.166	.085	.025	
9.0	.175	.085	.024	.172	.084	.024	.166	.082	.023	.161	.081	.023	.156	.079	.023	
10.0	.164	.079	.022	.162	.078	.022	.157	.077	.022	.152	.075	.021	.147	.074	.021	

ρ_{CC}	80%			70%			50%			30%			10%			0
ρ_w	50%	30%	10%	50%	30%	10%	50%	30%	10%	50%	30%	10%	50%	30%	10%	0
ρ_{fc}	20%			20%			20%			20%			20%			0
RCR	RCR:Room Cavity Ratio						Ceiling Cavity Exitance Coefficients (CCEC)									
0.0	.201	.201	.201	.172	.172	.172	.117	.117	.117	.067	.067	.067	.022	.022	.022	
1.0	.191	.167	.144	.164	.143	.124	.112	.098	.086	.064	.057	.050	.021	.018	.016	
2.0	.183	.142	.108	.157	.123	.093	.108	.085	.065	.062	.049	.038	.020	.016	.012	
3.0	.176	.125	.084	.151	.108	.073	.103	.075	.051	.060	.044	.030	.019	.014	.010	
4.0	.168	.112	.069	.144	.096	.060	.099	.067	.042	.057	.039	.025	.018	.013	.008	
5.0	.161	.101	.058	.138	.088	.050	.095	.061	.035	.055	.036	.021	.018	.012	.007	
6.0	.154	.093	.050	.132	.081	.043	.091	.056	.031	.053	.033	.018	.017	.011	.006	
7.0	.147	.086	.044	.126	.075	.038	.087	.052	.027	.051	.031	.016	.016	.010	.005	
8.0	.140	.080	.039	.121	.070	.034	.084	.049	.024	.049	.029	.014	.016	.009	.005	
9.0	.134	.075	.036	.116	.065	.031	.080	.046	.022	.047	.027	.013	.015	.009	.004	
10.0	.128	.071	.033	.111	.062	.029	.077	.043	.021	.045	.026	.012	.015	.008	.004	

C Range: 0 - 360DEG
 C Interval: 15.0DEG
 Test Speed: HIGH
 Temperature: 25.3°C
 Operators: DAMIN
 Test Date: 2024-04-02

γ Range: 0 - 180DEG
 γ Interval: 1.0DEG
 Test System: EVERFINE GO-2000B_V1 SYSTEM V2.00.471
 Humidity: 65.0%
 Test Distance: 4.880m [K=1.0000]
 Remarks:

UGR(Unified Glare Rating) Table

NAME: LED Strip		TYPE: Indoor lighting					WEIGHT: 75g				
SPEC.: 2835 128LED		DIM.: 500*8*1.2MM					SERIAL No.: 20240402001				
MFR.: EVERFINE		SUR.: 500*8MM					Shielding Angle:				
ceiling/cavity	0.7	0.7	0.5	0.5	0.3	0.7	0.7	0.5	0.5	0.3	
walls	0.5	0.3	0.5	0.3	0.3	0.5	0.3	0.5	0.3	0.3	
working plane	0.2	0.2	0.2	0.2	0.2	0.2	0.2	0.2	0.2	0.2	
Room dimensions	Viewed crosswise					Viewed endwise					
x = 2H y = 2H	26.0	27.5	26.3	27.8	28.0	25.7	27.2	26.0	27.5	27.7	
3H	27.6	29.1	28.0	29.3	29.6	27.2	28.7	27.6	28.9	29.2	
4H	28.3	29.6	28.6	29.9	30.2	27.8	29.2	28.2	29.4	29.7	
6H	28.8	30.1	29.2	30.4	30.7	28.2	29.5	28.6	29.8	30.1	
8H	29.0	30.2	29.3	30.5	30.8	28.3	29.5	28.7	29.8	30.2	
12H	29.1	30.2	29.4	30.6	30.9	28.4	29.5	28.7	29.9	30.2	
4H 2H	26.6	28.0	27.0	28.2	28.5	26.4	27.7	26.7	28.0	28.3	
3H	28.4	29.6	28.8	29.9	30.3	28.1	29.3	28.5	29.6	29.9	
4H	29.2	30.3	29.6	30.7	31.0	28.8	29.9	29.2	30.2	30.6	
6H	29.9	30.8	30.3	31.2	31.6	29.3	30.3	29.8	30.7	31.1	
8H	30.1	31.0	30.5	31.4	31.8	29.5	30.4	29.9	30.8	31.2	
12H	30.2	31.1	30.7	31.5	31.9	29.6	30.4	30.0	30.8	31.2	
8H 4H	29.5	30.4	29.9	30.8	31.2	29.1	30.0	29.6	30.4	30.8	
6H	30.3	31.0	30.7	31.4	31.9	29.8	30.5	30.3	31.0	31.4	
8H	30.6	31.2	31.1	31.7	32.2	30.0	30.7	30.5	31.1	31.6	
12H	30.8	31.4	31.3	31.9	32.4	30.2	30.8	30.7	31.2	31.8	
12H 4H	29.5	30.3	30.0	30.7	31.2	29.2	30.0	29.6	30.4	30.8	
6H	30.3	31.0	30.8	31.4	31.9	29.9	30.5	30.3	31.0	31.5	
8H	30.7	31.2	31.2	31.7	32.2	30.2	30.7	30.7	31.2	31.7	
Variations with the observer position at spacings(CIE Pub.117):											
S = 1.0H	+ 0.1 / - 0.2					+ 0.2 / - 0.2					
1.5H	+ 0.2 / - 0.3					+ 0.2 / - 0.4					
2.0H	+ 0.2 / - 0.3					+ 0.2 / - 0.4					

CIE Pub.117, 626.8 lm Total Lamp Luminous Flux Correct (8log(F/F0) = -1.6)
 Area: 0.008 m2

C Range: 0 - 360DEG
 C Interval: 15.0DEG
 Test Speed: HIGH
 Temperature:25.3°C
 Operators:DAMIN
 Test Date:2024-04-02

γ Range: 0 - 180DEG
 γ Interval: 1.0DEG
 Test System:EVERFINE GO-2000B_V1 SYSTEM V2.00.471
 Humidity:65.0%
 Test Distance:4.880m [K=1.0000]
 Remarks:

UTILIZATION FACTORS TABLE

NAME: LED Strip	TYPE: Indoor lighting	WEIGHT: 75g
SPEC.: 2835 128LED	DIM.: 500*8*1.2MM	SERIAL No.: 20240402001
MFR.: EVERFINE	SUR.: 500*8MM	Shielding Angle:

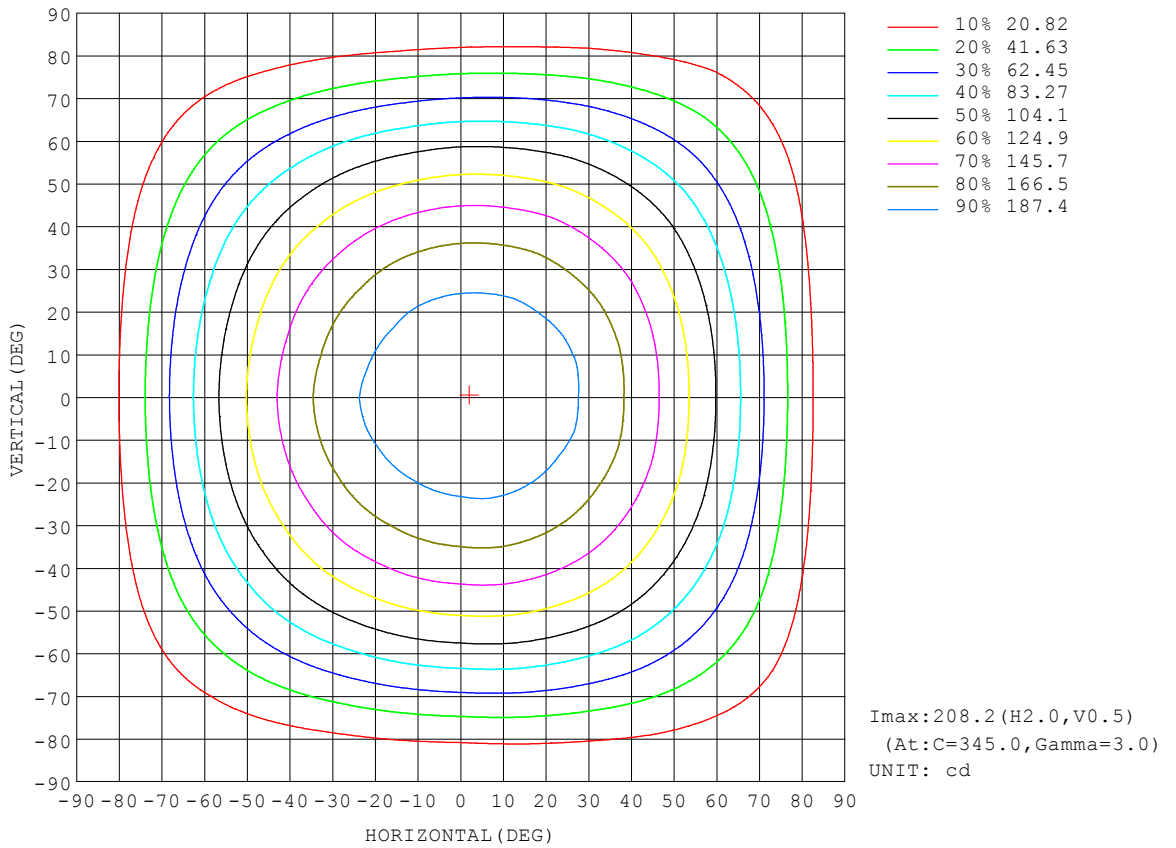
REFLECTANCE										
Ceiling	0.8	0.8	0.8	0.7	0.7	0.7	0.5	0.5	0.5	0
Walls	0.7	0.5	0.3	0.7	0.5	0.3	0.7	0.5	0.3	0
Working plane	0.2	0.2	0.2	0.2	0.2	0.2	0.2	0.2	0.2	0
ROOM INDEX	UTILIZATION FACTORS (PERCENT) $k(RI) \times RCR = 5$									
$k = 0.60$	56	45	38	56	44	37	54	44	37	31
0.80	66	55	47	65	54	47	63	53	46	39
1.00	75	64	56	74	63	56	71	64	55	48
1.25	82	71	64	80	70	64	78	69	63	55
1.50	87	77	70	85	76	69	82	74	68	60
2.00	94	85	79	92	84	78	88	82	76	68
2.50	98	90	84	96	89	83	92	86	81	72
3.00	101	94	89	99	93	88	95	90	85	76
4.00	106	100	95	103	98	93	99	94	91	81
5.00	108	103	99	105	101	97	101	97	94	84
ROOM INDEX	UF(total)									Direct
According to DIN EN 13032-2 2004			Suspended				SHRNOM = 1.25			

C Range: 0 - 360DEG
 C Interval: 15.0DEG
 Test Speed: HIGH
 Temperature: 25.3°C
 Operators: DAMIN
 Test Date: 2024-04-02

γ Range: 0 - 180DEG
 γ Interval: 1.0DEG
 Test System: EVERFINE GO-2000B_V1 SYSTEM V2.00.471
 Humidity: 65.0%
 Test Distance: 4.880m [K=1.0000]
 Remarks:

ISOCANDELA DIAGRAM

NAME: LED Strip	TYPE: Indoor lighting	WEIGHT: 75g
SPEC.: 2835 128LED	DIM.: 500*8*1.2MM	SERIAL No.: 20240402001
MFR.: EVERFINE	SUR.: 500*8MM	Shielding Angle:



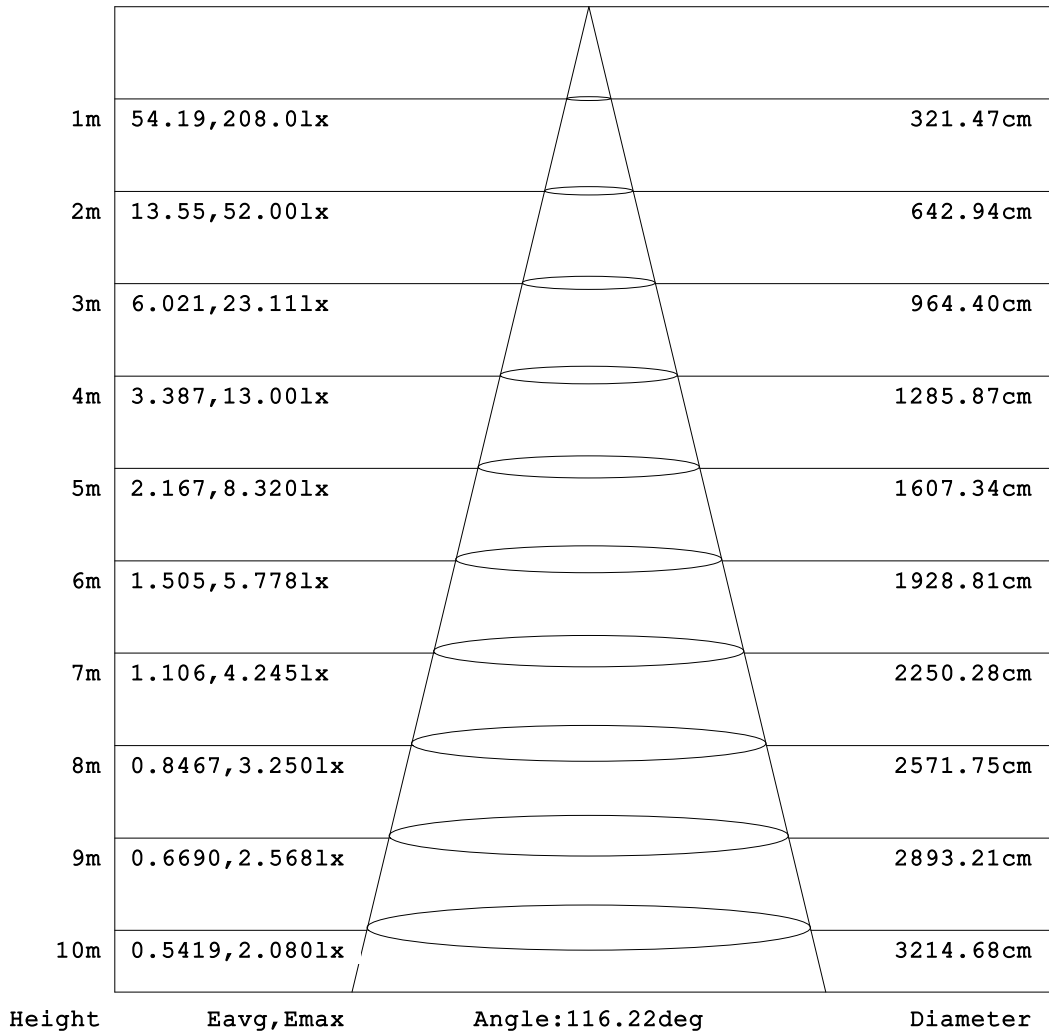
C Range: 0 - 360DEG
 C Interval: 15.0DEG
 Test Speed: HIGH
 Temperature:25.3°C
 Operators:DAMIN
 Test Date:2024-04-02

γ Range: 0 - 180DEG
 γ Interval: 1.0DEG
 Test System:EVERFINE GO-2000B_V1 SYSTEM V2.00.471
 Humidity:65.0%
 Test Distance:4.880m [K=1.0000]
 Remarks:

AAI Figure

NAME: LED Strip	TYPE: Indoor lighting	WEIGHT: 75g
SPEC.: 2835 128LED	DIM.: 500*8*1.2MM	SERIAL No.: 20240402001
MFR.: EVERFINE	SUR.: 500*8MM	Shielding Angle:

Flux out:471.5 lm



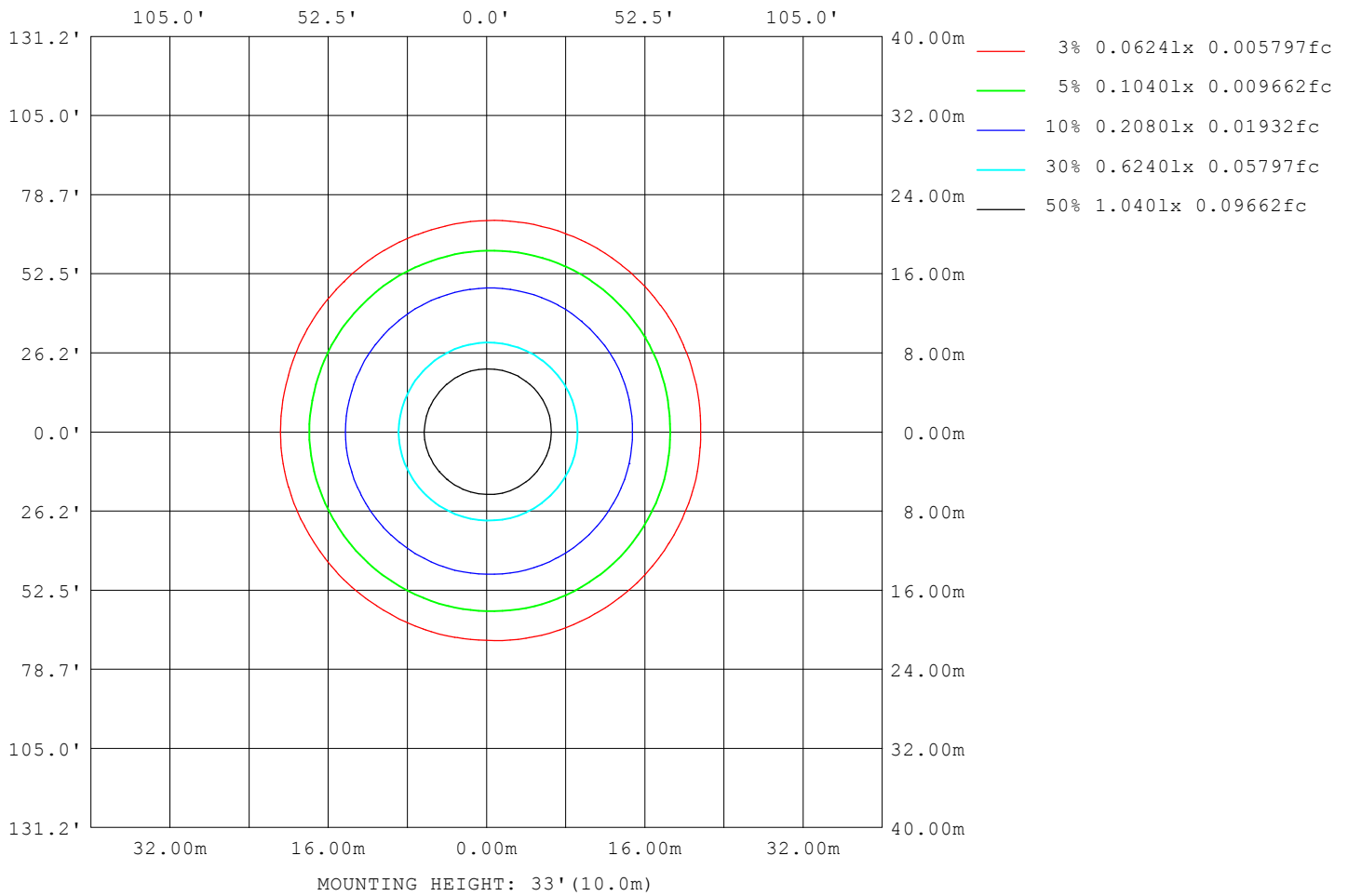
Note: The Curves indicate the illuminated area and the average illumination when the luminaire is at different distance.

C Range: 0 - 360DEG
 C Interval: 15.0DEG
 Test Speed: HIGH
 Temperature: 25.3°C
 Operators: DAMIN
 Test Date: 2024-04-02

γ Range: 0 - 180DEG
 γ Interval: 1.0DEG
 Test System: EVERFINE GO-2000B_V1 SYSTEM V2.00.471
 Humidity: 65.0%
 Test Distance: 4.880m [K=1.0000]
 Remarks:

ISOLUX DIAGRAM

NAME: LED Strip	TYPE: Indoor lighting	WEIGHT: 75g
SPEC.: 2835 128LED	DIM.: 500*8*1.2MM	SERIAL No.: 20240402001
MFR.: EVERFINE	SUR.: 500*8MM	Shielding Angle:



C Range: 0 - 360DEG
 C Interval: 15.0DEG
 Test Speed: HIGH
 Temperature: 25.3°C
 Operators: DAMIN
 Test Date: 2024-04-02

γ Range: 0 - 180DEG
 γ Interval: 1.0DEG
 Test System: EVERFINE GO-2000B_V1 SYSTEM V2.00.471
 Humidity: 65.0%
 Test Distance: 4.880m [K=1.0000]
 Remarks:

LED Avg.L Report

NAME: LED Strip	TYPE: Indoor lighting	WEIGHT: 75g
SPEC.: 2835 128LED	DIM.: 500*8*1.2MM	SERIAL No.: 20240402001
MFR.: EVERFINE	SUR.: 500*8MM	Shielding Angle:

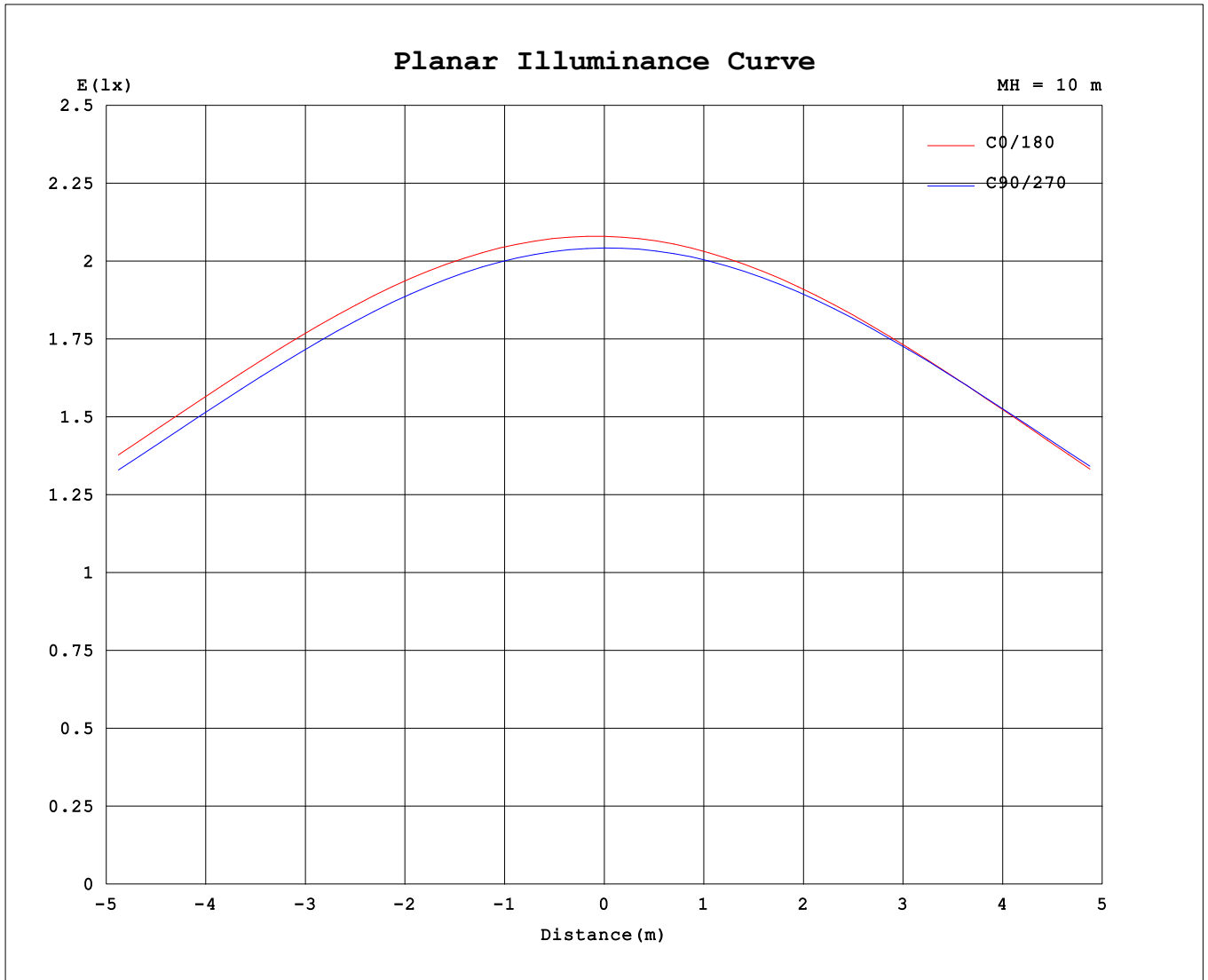
AvgL	cd/m2
L_0~180 (65) av	23656
L_0~180 (75) av	20627
L_0~180 (85) av	15504
L_90~270 (65) av	23571
L_90~270 (75) av	20529
L_90~270 (85) av	15575
L_45 (65) av	23642
L_45 (75) av	20649
L_45 (85) av	16098

Standard: GB/T 29293-2012

C Range: 0 - 360DEG
 C Interval: 15.0DEG
 Test Speed: HIGH
 Temperature:25.3°C
 Operators:DAMIN
 Test Date:2024-04-02

γ Range: 0 - 180DEG
 γ Interval: 1.0DEG
 Test System:EVERFINE GO-2000B_V1 SYSTEM V2.00.471
 Humidity:65.0%
 Test Distance:4.880m [K=1.0000]
 Remarks:

Planar Illuminance Curve



C Range: 0 - 360DEG
 C Interval: 15.0DEG
 Test Speed: HIGH
 Temperature: 25.3°C
 Operators: DAMIN
 Test Date: 2024-04-02

γ Range: 0 - 180DEG
 γ Interval: 1.0DEG
 Test System: EVERFINE GO-2000B_V1 SYSTEM V2.00.471
 Humidity: 65.0%
 Test Distance: 4.880m [K=1.0000]
 Remarks:

LUMINOUS DISTRIBUTION INTENSITY DATA

NAME: LED Strip	TYPE: Indoor lighting	WEIGHT: 75g
SPEC.: 2835 128LED	DIM.: 500*8*1.2MM	SERIAL No.: 20240402001
MFR.: EVERFINE	SUR.: 500*8MM	Shielding Angle:

Table--1

UNIT: cd

C (DEG) \ γ (DEG)	0	15	30	45	60	75	90	105	120	135	150	165	180	195	210	225	240	255	270
0	208	207	206	205	205	205	204	204	205	205	207	208	208	207	206	205	205	205	204
5	208	207	205	205	205	204	203	203	203	204	205	206	207	206	204	204	204	204	204
10	206	206	204	203	203	202	201	201	201	201	202	203	204	202	201	201	202	202	202
15	203	203	201	200	199	198	197	197	196	197	197	198	199	198	197	197	197	198	198
20	198	198	196	195	194	193	192	191	190	191	191	192	193	192	191	191	192	192	193
25	191	191	190	189	188	187	185	184	183	183	183	185	185	184	184	184	185	186	186
30	183	184	182	181	180	178	176	175	174	174	174	175	176	175	175	175	176	177	178
35	174	174	172	171	170	169	166	165	164	164	164	165	166	164	165	165	166	167	169
40	162	163	161	161	159	158	155	154	152	152	152	153	154	153	153	153	155	156	158
45	150	150	149	148	147	145	142	141	139	139	138	139	140	139	140	140	142	143	145
50	136	136	135	134	133	131	128	127	125	125	124	125	126	125	126	126	128	129	131
55	120	121	120	119	117	115	112	111	109	109	108	109	110	109	110	110	112	114	116
60	103	104	103	102	100	98.6	95.7	94.1	92.3	91.5	90.8	91.8	92.6	92.1	93.0	93.7	95.5	97.0	99.5
65	85.3	85.8	84.7	84.0	82.1	80.6	77.7	76.1	74.3	73.5	72.9	73.8	74.7	74.3	75.3	75.9	77.8	79.1	81.7
70	66.6	66.8	65.9	65.0	63.3	61.8	59.1	57.5	55.8	55.0	54.5	55.2	55.9	55.9	56.7	57.5	59.1	60.6	62.9
75	47.6	47.9	46.7	46.1	44.4	43.1	40.7	39.3	37.6	37.0	36.4	37.2	37.8	37.8	38.6	39.4	40.8	42.3	44.3
80	29.3	29.5	28.4	28.0	26.5	25.5	23.5	22.5	21.1	20.6	20.0	20.5	21.1	21.0	21.9	22.6	24.0	25.0	27.0
85	13.7	13.9	13.1	12.9	11.7	11.0	9.60	9.17	8.29	8.07	7.52	7.72	7.92	7.78	8.52	8.96	10.1	10.8	12.1
90	3.56	3.62	3.17	3.03	2.58	2.32	1.45	2.02	1.93	1.94	1.89	1.98	1.85	1.75	1.84	1.87	2.16	2.32	1.92
95	0.74	0.74	0.75	0.75	0.80	0.70	0.70	0.75	0.75	0.76	0.76	0.76	0.78	0.77	0.76	0.76	0.75	0.75	0.71
100	0.69	0.70	0.70	0.70	0.70	0.72	0.72	0.75	0.73	0.73	0.73	0.74	0.79	0.78	0.78	0.76	0.76	0.76	0.75
105	0.75	0.76	0.76	0.78	0.79	0.82	0.83	0.84	0.84	0.85	0.84	0.84	0.88	0.88	0.88	0.87	0.87	0.86	0.86
110	0.87	0.88	0.88	0.91	0.92	0.95	0.96	0.97	0.97	0.98	0.97	0.97	1.01	1.00	1.01	1.00	1.00	0.99	0.99
115	1.00	1.01	1.01	1.04	1.05	1.08	1.10	1.11	1.10	1.11	1.10	1.10	1.14	1.13	1.14	1.13	1.14	1.13	1.13
120	1.12	1.14	1.14	1.17	1.18	1.21	1.23	1.24	1.23	1.24	1.22	1.23	1.27	1.26	1.27	1.26	1.27	1.26	1.26
125	1.25	1.26	1.27	1.29	1.31	1.34	1.37	1.37	1.36	1.37	1.35	1.36	1.40	1.39	1.40	1.39	1.40	1.39	1.39
130	1.38	1.39	1.40	1.43	1.44	1.48	1.50	1.51	1.49	1.50	1.48	1.48	1.52	1.52	1.53	1.52	1.53	1.52	1.52
135	1.51	1.53	1.53	1.56	1.57	1.60	1.62	1.63	1.62	1.62	1.61	1.61	1.65	1.64	1.65	1.64	1.65	1.64	1.65
140	1.63	1.66	1.66	1.69	1.70	1.73	1.74	1.76	1.74	1.74	1.73	1.73	1.77	1.76	1.77	1.76	1.77	1.77	1.76
145	1.76	1.79	1.79	1.82	1.82	1.85	1.86	1.88	1.86	1.86	1.85	1.85	1.88	1.88	1.88	1.88	1.89	1.88	1.88
150	1.89	1.92	1.92	1.94	1.94	1.97	1.98	1.99	1.98	1.98	1.96	1.97	2.00	1.99	1.99	1.99	2.00	1.99	1.99
155	2.01	2.04	2.04	2.05	2.05	2.07	2.08	2.10	2.08	2.09	2.07	2.07	2.11	2.09	2.10	2.09	2.10	2.10	2.10
160	2.13	2.15	2.15	2.15	2.15	2.17	2.18	2.19	2.18	2.19	2.17	2.18	2.22	2.19	2.20	2.19	2.20	2.19	2.19
165	2.25	2.26	2.24	2.25	2.25	2.27	2.27	2.28	2.27	2.28	2.26	2.27	2.32	2.28	2.29	2.28	2.29	2.28	2.28
170	2.34	2.35	2.33	2.34	2.33	2.35	2.34	2.36	2.35	2.36	2.35	2.35	2.40	2.36	2.37	2.35	2.37	2.35	2.36
175	2.42	2.42	2.40	2.41	2.40	2.42	2.41	2.42	2.41	2.42	2.41	2.42	2.46	2.42	2.43	2.41	2.42	2.41	2.42
180	2.48	2.47	2.45	2.45	2.45	2.45	2.45	2.45	2.45	2.45	2.45	2.45	2.48	2.47	2.46	2.45	2.45	2.45	2.45

C Range: 0 - 360DEG
 C Interval: 15.0DEG
 Test Speed: HIGH
 Temperature:25.3℃
 Operators:DAMIN
 Test Date:2024-04-02

γ Range: 0 - 180DEG
 γ Interval: 1.0DEG
 Test System:EVERFINE GO-2000B_V1 SYSTEM V2.00.471
 Humidity:65.0%
 Test Distance:4.880m [K=1.0000]
 Remarks:

LUMINOUS DISTRIBUTION INTENSITY DATA

NAME: LED Strip	TYPE: Indoor lighting	WEIGHT: 75g
SPEC.: 2835 128LED	DIM.: 500*8*1.2MM	SERIAL No.: 20240402001
MFR.: EVERFINE	SUR.: 500*8MM	Shielding Angle:

Table--2

UNIT: cd

C (DEG) \ γ (DEG)	285	300	315	330	345														
0	204	205	205	207	208														
5	204	205	205	207	208														
10	202	203	204	205	207														
15	199	200	201	202	203														
20	194	195	196	197	199														
25	187	189	190	191	192														
30	180	181	182	184	184														
35	170	172	173	174	175														
40	159	161	162	163	163														
45	147	149	150	151	151														
50	133	135	136	137	137														
55	118	120	121	122	121														
60	101	103	104	105	104														
65	83.7	85.6	86.2	87.1	86.3														
70	65.0	66.7	67.5	68.3	67.4														
75	46.3	47.9	48.5	49.1	48.5														
80	28.3	29.9	30.3	30.9	30.1														
85	13.3	14.7	15.0	15.4	14.1														
90	3.55	4.39	4.54	4.48	3.79														
95	0.76	1.00	0.89	0.94	0.79														
100	0.73	0.73	0.72	0.74	0.73														
105	0.83	0.82	0.80	0.80	0.79														
110	0.96	0.95	0.93	0.93	0.92														
115	1.10	1.08	1.06	1.05	1.04														
120	1.23	1.21	1.19	1.19	1.17														
125	1.36	1.34	1.32	1.32	1.30														
130	1.49	1.47	1.44	1.45	1.43														
135	1.61	1.60	1.57	1.57	1.56														
140	1.73	1.72	1.70	1.70	1.69														
145	1.85	1.84	1.82	1.82	1.82														
150	1.96	1.95	1.94	1.94	1.94														
155	2.07	2.07	2.05	2.06	2.05														
160	2.17	2.17	2.15	2.16	2.16														
165	2.26	2.26	2.24	2.25	2.25														
170	2.34	2.34	2.33	2.34	2.34														
175	2.40	2.41	2.40	2.41	2.41														
180	2.45	2.45	2.45	2.45	2.45														

C Range: 0 - 360DEG
 C Interval: 15.0DEG
 Test Speed: HIGH
 Temperature:25.3°C
 Operators:DAMIN
 Test Date:2024-04-02

γ Range: 0 - 180DEG
 γ Interval: 1.0DEG
 Test System:EVERFINE GO-2000B_V1 SYSTEM V2.00.471
 Humidity:65.0%
 Test Distance:4.880m [K=1.0000]
 Remarks: