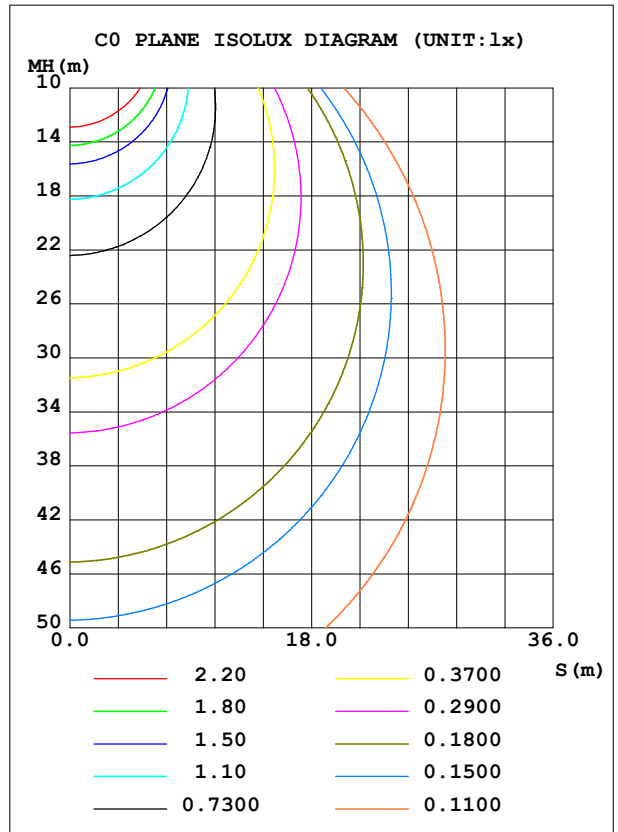
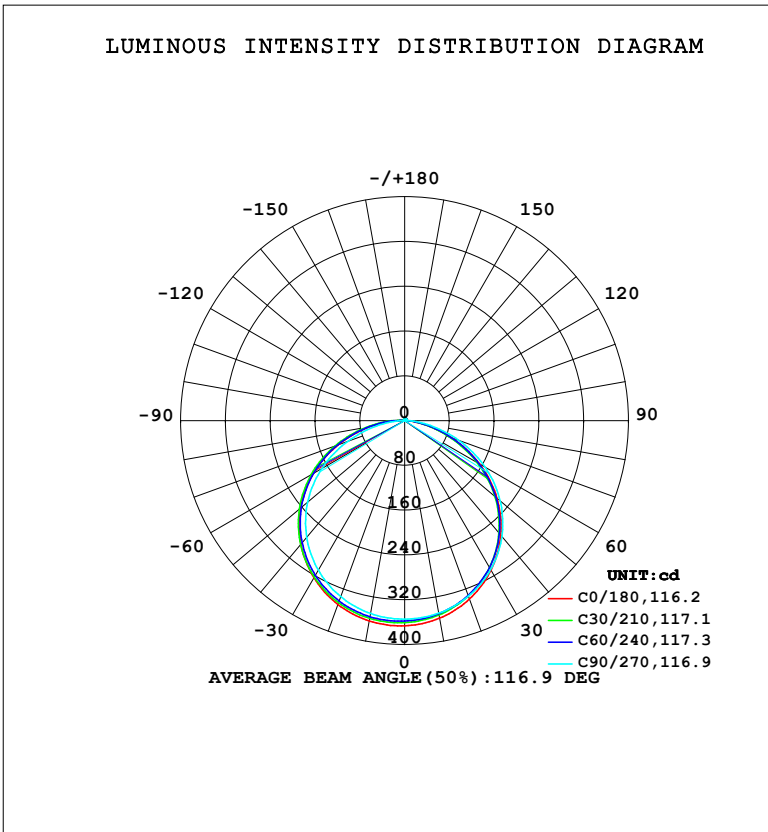


LUMINAIRE PHOTOMETRIC TEST REPORT

NAME: LED Strip	TYPE: Indoor lighting	WEIGHT: 75g
SPEC.: 2835 238LED	DIM.: 500*10*1.2MM	SERIAL No.: 20240402002
MFR.: EVERFINE	SUR.: 500*10MM	Shielding Angle:

DATA OF LAMP		PHOTOMETRIC DATA			
MODEL: 2835-24 (WCP) -SR-PG-ME-EP		Imax (cd)	366.8	S/MH (C0/180)	1.31
NOMINAL POWER (W)	9.51245	LOR (%)	100.0	S/MH (C90/270)	1.29
RATED VOLTAGE (V)	DC 24V	TOTAL FLUX (lm)	1101.1	η UP, DN (C0-180)	0.9, 49.2
NOMINAL FLUX (lm)	1101.14	CIE CLASS	DIRECT	η UP, DN (C180-360)	0.8, 49.1
LAMPS INSIDE	1	η up (%)	1.7	CIBSE SHR NOM	1.25
TEST VOLTAGE (V)	DC 24V	η down (%)	98.3	CIBSE SHR MAX	1.35



C Range: 0 - 360DEG
 C Interval: 15.0DEG
 Test Speed: HIGH
 Temperature: 25.3°C
 Operators: DAMIN
 Test Date: 2024-04-02

γ Range: 0 - 180DEG
 γ Interval: 1.0DEG
 Test System: EVERFINE GO-2000B_V1 SYSTEM V2.00.471
 Humidity: 65.0%
 Test Distance: 4.880m [K=1.0000]
 Remarks:

ZONAL FLUX DIAGRAM

ZONAL FLUX DIAGRAM:

γ	C0	C45	C90	C135	C180	C225	C270	C315	γ	Φ zone	Φ total	%lum,lamp
10	358.4	350.9	349.3	356.1	363.5	356.9	349.8	348.4	0- 10	34.05	34.05	3.09,3.09
20	339.1	332.1	333.7	344.1	349.2	344.2	334.4	328.5	10- 20	98.11	132.2	12,12
30	308.6	302.4	307.4	321.4	324.1	321.1	308.5	297.7	20- 30	150.3	282.5	25.7,25.7
40	267.1	261.8	270.3	288.1	288.4	287.7	272.3	256.2	30- 40	183.9	466.3	42.4,42.4
50	215.4	210.7	222.8	244.5	242.8	244.5	226.2	204.5	40- 50	193.8	660.1	59.9,59.9
60	154.7	150.1	165.8	191.0	188.1	192.1	170.4	144.0	50- 60	177.6	837.7	76.1,76.1
70	88.41	85.80	102.6	130.1	126.1	132.1	107.5	79.96	60- 70	136.5	974.2	88.5,88.5
80	29.34	30.08	41.69	68.19	62.33	70.15	45.85	27.91	70- 80	80.02	1054	95.7,95.7
90	2.616	2.896	2.955	20.87	14.11	21.52	3.688	1.726	80- 90	28.18	1082	98.3,98.3
100	1.604	1.477	1.228	3.942	1.381	3.769	1.310	1.546	90-100	5.444	1088	98.8,98.8
110	1.800	1.815	1.666	1.420	1.588	1.613	1.744	1.899	100-110	1.872	1090	99,99
120	2.181	2.266	2.137	1.858	2.036	2.028	2.219	2.351	110-120	1.893	1092	99.1,99.1
130	2.627	2.720	2.588	2.319	2.483	2.484	2.670	2.787	120-130	2.114	1094	99.3,99.3
140	3.061	3.150	3.019	2.772	2.929	2.922	3.091	3.198	130-140	2.165	1096	99.5,99.5
150	3.470	3.541	3.418	3.224	3.366	3.347	3.473	3.562	140-150	2.019	1098	99.7,99.7
160	3.870	3.873	3.765	3.648	3.795	3.735	3.807	3.867	150-160	1.667	1100	99.9,99.9
170	4.196	4.141	4.055	4.008	4.164	4.066	4.086	4.110	160-170	1.115	1101	100,100
180	4.371	4.295	4.231	4.239	4.371	4.275	4.243	4.238	170-180	0.3982	1101	100,100
DEG	LUMINOUS INTENSITY:cd									UNIT:lm		

Conical surface Flux(90deg): 563.6 lm

%lum = 51.2%

%lamp = 51.2%

Conical surface Flux(120deg): 837.72 lm

%lum = 76.1%

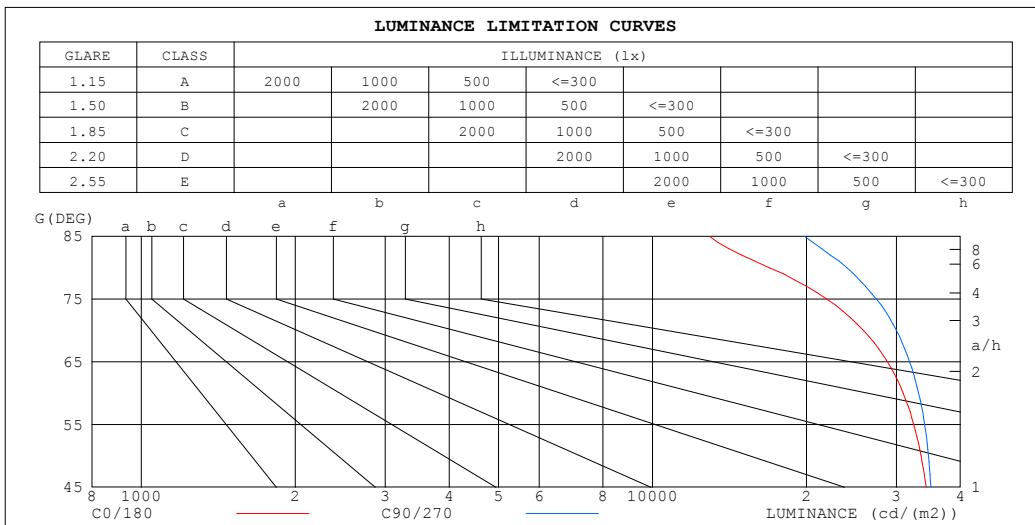
%lamp = 76.1%

C Range: 0 - 360DEG
 C Interval: 15.0DEG
 Test Speed: HIGH
 Temperature:25.3°C
 Operators:DAMIN
 Test Date:2024-04-02

γ Range: 0 - 180DEG
 γ Interval: 1.0DEG
 Test System:EVERFINE GO-2000B_V1 SYSTEM V2.00.471
 Humidity:65.0%
 Test Distance:4.880m [K=1.0000]
 Remarks:

LUMINANCE LIMITATION CURVES

NAME: LED Strip	TYPE: Indoor lighting	WEIGHT: 75g
SPEC.: 2835 238LED	DIM.: 500*10*1.2MM	SERIAL No.: 20240402002
MFR.: EVERFINE	SUR.: 500*10MM	Shielding Angle:



LUMINANCE cd/(m2)		
G (DEG)	C0/180	C90/270
85	12923	19846
80	16893	24008
75	21905	27402
70	25851	30009
65	28807	31822
60	30933	33151
55	32442	34079
50	33508	34661
45	34287	35034

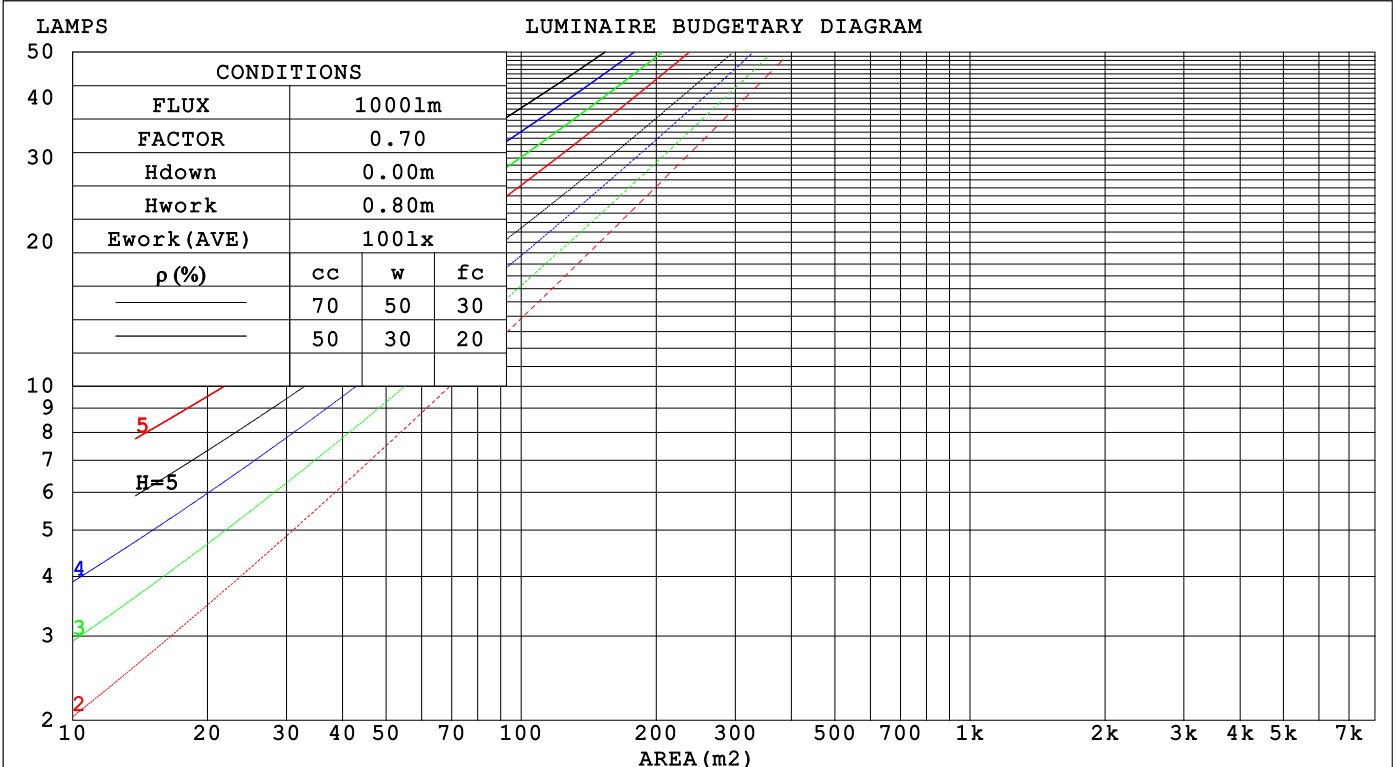
C Range: 0 - 360DEG
 C Interval: 15.0DEG
 Test Speed: HIGH
 Temperature: 25.3°C
 Operators: DAMIN
 Test Date: 2024-04-02

γ Range: 0 - 180DEG
 γ Interval: 1.0DEG
 Test System: EVERFINE GO-2000B_V1 SYSTEM V2.00.471
 Humidity: 65.0%
 Test Distance: 4.880m [K=1.0000]
 Remarks:

CU AND LUMINAIRE BUDGETARY ESTIMATE DIAGRAM

NAME: LED Strip	TYPE: Indoor lighting	WEIGHT: 75g
SPEC.: 2835 238LED	DIM.: 500*10*1.2MM	SERIAL No.: 20240402002
MFR.: EVERFINE	SUR.: 500*10MM	Shielding Angle:

pcc	80%			70%			50%			30%			10%			0
p _w	50%	30%	10%	50%	30%	10%	50%	30%	10%	50%	30%	10%	50%	30%	10%	0
p _{fc}	20%			20%			20%			20%			20%			0
RCR	RCR:Room Cavity Ratio						Coefficients of Utilization(CU)									
0.0	1.19	1.19	1.19	1.16	1.16	1.16	1.10	1.10	1.10	1.05	1.05	1.05	1.00	1.00	1.00	.98
1.0	1.03	.99	.94	1.00	.96	.93	.96	.93	.90	.92	.89	.86	.88	.86	.84	.81
2.0	.89	.82	.76	.87	.81	.75	.83	.78	.73	.80	.75	.71	.77	.73	.70	.67
3.0	.78	.70	.63	.77	.69	.63	.73	.67	.61	.70	.65	.60	.68	.63	.59	.56
4.0	.69	.60	.53	.68	.59	.53	.65	.58	.52	.62	.56	.51	.60	.55	.50	.48
5.0	.62	.53	.46	.60	.52	.45	.58	.51	.45	.56	.49	.44	.54	.48	.43	.41
6.0	.55	.46	.40	.54	.46	.40	.52	.45	.39	.51	.44	.39	.49	.43	.38	.36
7.0	.50	.41	.35	.49	.41	.35	.48	.40	.34	.46	.39	.34	.44	.38	.34	.32
8.0	.46	.37	.31	.45	.37	.31	.43	.36	.31	.42	.35	.30	.41	.35	.30	.28
9.0	.42	.34	.28	.41	.33	.28	.40	.33	.28	.39	.32	.27	.38	.32	.27	.25
10.0	.39	.31	.25	.38	.30	.25	.37	.30	.25	.36	.29	.25	.35	.29	.25	.23



C Range: 0 - 360DEG
 C Interval: 15.0DEG
 Test Speed: HIGH
 Temperature:25.3°C
 Operators:DAMIN
 Test Date:2024-04-02

γ Range: 0 - 180DEG
 γ Interval: 1.0DEG
 Test System:EVERFINE GO-2000B_V1 SYSTEM V2.00.471
 Humidity:65.0%
 Test Distance:4.880m [K=1.0000]
 Remarks:

WEC AND CCEC

NAME: LED Strip	TYPE: Indoor lighting	WEIGHT: 75g
SPEC.: 2835 238LED	DIM.: 500*10*1.2MM	SERIAL No.: 20240402002
MFR.: EVERFINE	SUR.: 500*10MM	Shielding Angle:

ρ_{cc}	80%			70%			50%			30%			10%			0
ρ_w	50%	30%	10%	50%	30%	10%	50%	30%	10%	50%	30%	10%	50%	30%	10%	0
ρ_{fc}	20%			20%			20%			20%			20%			0
RCR	RCR:Room Cavity Ratio						Wall Exitance Coefficients(WEC)									
0.0																
1.0	.320	.182	.058	.312	.178	.057	.298	.171	.055	.285	.164	.053	.273	.158	.051	
2.0	.298	.163	.050	.291	.160	.049	.278	.155	.048	.267	.150	.047	.256	.145	.046	
3.0	.274	.146	.044	.268	.144	.043	.257	.139	.042	.247	.135	.041	.237	.131	.041	
4.0	.252	.131	.039	.247	.129	.038	.237	.126	.038	.228	.122	.037	.219	.119	.036	
5.0	.233	.119	.034	.228	.117	.034	.219	.114	.034	.211	.111	.033	.203	.109	.033	
6.0	.216	.108	.031	.211	.107	.031	.203	.104	.030	.196	.102	.030	.189	.100	.030	
7.0	.200	.099	.028	.197	.098	.028	.190	.096	.028	.183	.094	.027	.177	.092	.027	
8.0	.187	.091	.026	.184	.090	.026	.177	.089	.025	.171	.087	.025	.165	.085	.025	
9.0	.175	.085	.024	.172	.084	.024	.166	.082	.023	.161	.081	.023	.156	.079	.023	
10.0	.165	.079	.022	.162	.078	.022	.157	.077	.022	.152	.075	.021	.147	.074	.021	

ρ_{cc}	80%			70%			50%			30%			10%			0
ρ_w	50%	30%	10%	50%	30%	10%	50%	30%	10%	50%	30%	10%	50%	30%	10%	0
ρ_{fc}	20%			20%			20%			20%			20%			0
RCR	RCR:Room Cavity Ratio						Ceiling Cavity Exitance Coefficients(CCEC)									
0.0	.203	.203	.203	.174	.174	.174	.119	.119	.119	.068	.068	.068	.022	.022	.022	
1.0	.194	.169	.147	.166	.145	.126	.114	.100	.087	.065	.058	.051	.021	.019	.016	
2.0	.186	.145	.110	.159	.125	.095	.109	.086	.067	.063	.050	.039	.020	.016	.013	
3.0	.179	.128	.087	.153	.110	.075	.105	.076	.053	.061	.045	.031	.019	.014	.010	
4.0	.171	.114	.071	.147	.099	.062	.101	.069	.043	.058	.040	.026	.019	.013	.008	
5.0	.163	.104	.060	.140	.090	.052	.097	.063	.037	.056	.037	.022	.018	.012	.007	
6.0	.156	.096	.052	.134	.083	.045	.093	.058	.032	.054	.034	.019	.017	.011	.006	
7.0	.149	.089	.046	.129	.077	.040	.089	.054	.029	.052	.032	.017	.017	.010	.006	
8.0	.143	.083	.042	.123	.072	.037	.085	.051	.026	.050	.030	.015	.016	.010	.005	
9.0	.137	.078	.038	.118	.068	.034	.082	.048	.024	.048	.028	.014	.015	.009	.005	
10.0	.131	.074	.036	.113	.064	.031	.078	.045	.022	.046	.027	.013	.015	.009	.004	

C Range: 0 - 360DEG
 C Interval: 15.0DEG
 Test Speed: HIGH
 Temperature:25.3°C
 Operators:DAMIN
 Test Date:2024-04-02

γ Range: 0 - 180DEG
 γ Interval: 1.0DEG
 Test System:EVERFINE GO-2000B_V1 SYSTEM V2.00.471
 Humidity:65.0%
 Test Distance:4.880m [K=1.0000]
 Remarks:

UGR(Unified Glare Rating) Table

NAME: LED Strip		TYPE: Indoor lighting				WEIGHT: 75g					
SPEC.: 2835 238LED		DIM.: 500*10*1.2MM				SERIAL No.: 20240402002					
MFR.: EVERFINE		SUR.: 500*10MM				Shielding Angle:					
ceiling/cavity		0.7	0.7	0.5	0.5	0.3	0.7	0.7	0.5	0.5	0.3
walls		0.5	0.3	0.5	0.3	0.3	0.5	0.3	0.5	0.3	0.3
working plane		0.2	0.2	0.2	0.2	0.2	0.2	0.2	0.2	0.2	0.2
Room dimensions		Viewed crosswise					Viewed endwise				
x = 2H y = 2H		24.2	25.7	24.5	26.0	26.2	24.4	25.9	24.7	26.2	26.4
	3H	25.6	27.0	25.9	27.2	27.5	25.9	27.3	26.2	27.6	27.8
	4H	26.0	27.3	26.3	27.6	27.9	26.5	27.8	26.8	28.1	28.4
	6H	26.3	27.5	26.6	27.8	28.1	26.9	28.1	27.2	28.4	28.7
	8H	26.3	27.5	26.7	27.8	28.2	27.0	28.2	27.3	28.5	28.8
	12H	26.3	27.5	26.7	27.8	28.2	27.0	28.2	27.4	28.5	28.9
	4H 2H	24.7	26.1	25.1	26.4	26.7	24.9	26.2	25.2	26.5	26.8
	3H	26.2	27.4	26.6	27.7	28.1	26.5	27.7	26.9	28.0	28.4
	4H	26.8	27.8	27.2	28.2	28.6	27.2	28.3	27.6	28.6	29.0
	6H	27.1	28.1	27.5	28.5	28.9	27.7	28.6	28.1	29.0	29.4
	8H	27.2	28.1	27.7	28.5	28.9	27.8	28.7	28.3	29.1	29.5
	12H	27.3	28.1	27.7	28.5	28.9	27.9	28.7	28.4	29.2	29.6
	8H 4H	26.9	27.8	27.4	28.2	28.6	27.3	28.2	27.8	28.6	29.0
	6H	27.4	28.1	27.9	28.6	29.0	27.9	28.6	28.4	29.1	29.5
	8H	27.5	28.2	28.0	28.7	29.1	28.1	28.8	28.6	29.2	29.7
	12H	27.6	28.2	28.2	28.7	29.2	28.3	28.8	28.8	29.3	29.8
	12H 4H	26.9	27.7	27.4	28.2	28.6	27.3	28.1	27.8	28.5	29.0
	6H	27.4	28.1	27.9	28.5	29.0	27.9	28.6	28.4	29.0	29.5
	8H	27.6	28.2	28.1	28.6	29.2	28.2	28.7	28.7	29.2	29.7
Variations with the observer position at spacings(CIE Pub.117):											
S = 1.0H		+ 0.2 / - 0.3					+ 0.2 / - 0.2				
1.5H		+ 0.2 / - 0.4					+ 0.2 / - 0.3				
2.0H		+ 0.3 / - 0.3					+ 0.3 / - 0.4				

CIE Pub.117, 1101 lm Total Lamp Luminous Flux Correct (8log(F/F0) = 0.3)
 Area: 0.01 m2

C Range: 0 - 360DEG
 C Interval: 15.0DEG
 Test Speed: HIGH
 Temperature:25.3°C
 Operators:DAMIN
 Test Date:2024-04-02

γ Range: 0 - 180DEG
 γ Interval: 1.0DEG
 Test System:EVERFINE GO-2000B_V1 SYSTEM V2.00.471
 Humidity:65.0%
 Test Distance:4.880m [K=1.0000]
 Remarks:

UTILIZATION FACTORS TABLE

NAME: LED Strip	TYPE: Indoor lighting	WEIGHT: 75g
SPEC.: 2835 238LED	DIM.: 500*10*1.2MM	SERIAL No.: 20240402002
MFR.: EVERFINE	SUR.: 500*10MM	Shielding Angle:

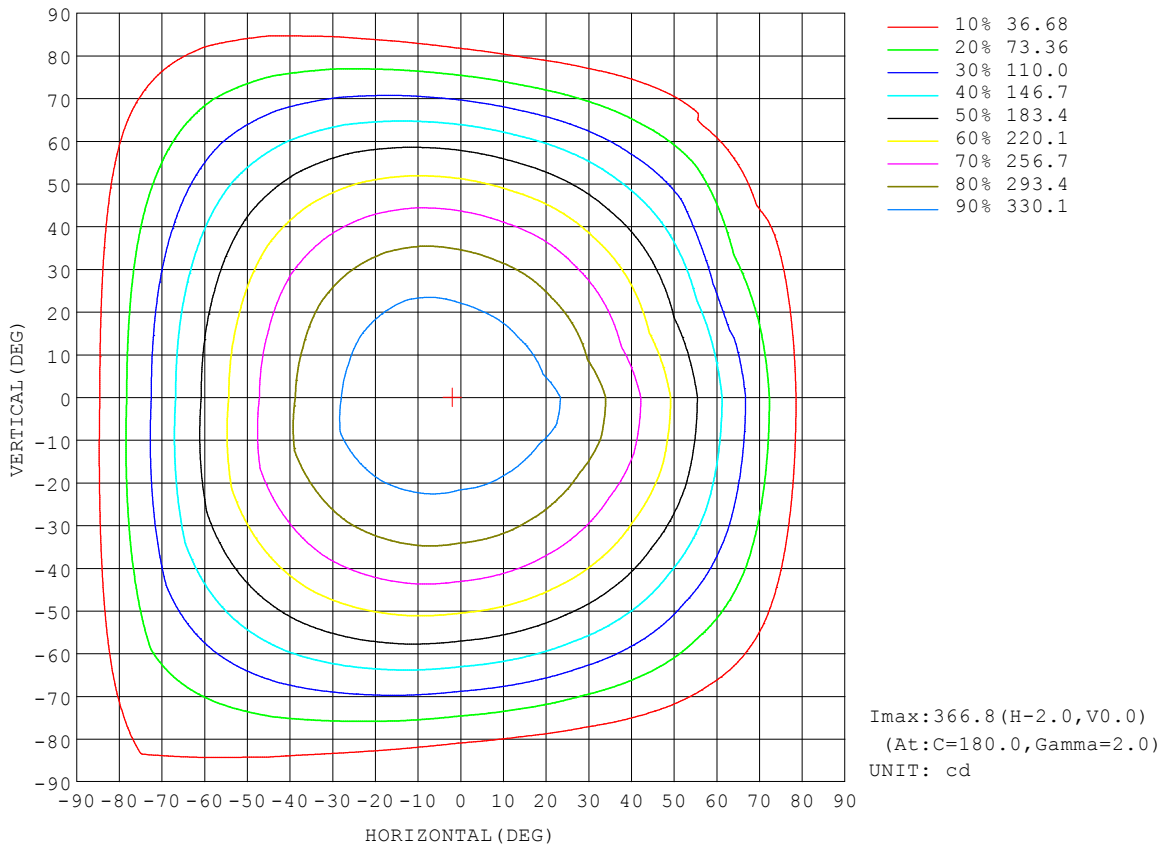
REFLECTANCE										
Ceiling	0.8	0.8	0.8	0.7	0.7	0.7	0.5	0.5	0.5	0
Walls	0.7	0.5	0.3	0.7	0.5	0.3	0.7	0.5	0.3	0
Working plane	0.2	0.2	0.2	0.2	0.2	0.2	0.2	0.2	0.2	0
ROOM INDEX	UTILIZATION FACTORS (PERCENT) $k(RI) \times RCR = 5$									
$k = 0.60$	56	44	37	55	44	37	54	44	37	30
0.80	66	54	47	65	54	47	63	53	46	39
1.00	75	63	56	73	63	55	71	64	55	47
1.25	82	71	64	80	70	63	77	69	62	55
1.50	87	77	69	85	76	69	82	74	68	60
2.00	94	85	78	92	84	77	88	81	76	67
2.50	98	90	83	96	88	82	91	85	80	72
3.00	101	94	88	99	92	87	94	89	85	76
4.00	105	99	94	103	97	93	98	94	90	81
5.00	108	103	98	105	101	97	100	97	93	84
ROOM INDEX	UF(total)									Direct
According to DIN EN 13032-2 2004			Suspended				SHRNOM = 1.25			

C Range: 0 - 360DEG
 C Interval: 15.0DEG
 Test Speed: HIGH
 Temperature: 25.3°C
 Operators: DAMIN
 Test Date: 2024-04-02

γ Range: 0 - 180DEG
 γ Interval: 1.0DEG
 Test System: EVERFINE GO-2000B_V1 SYSTEM V2.00.471
 Humidity: 65.0%
 Test Distance: 4.880m [K=1.0000]
 Remarks:

ISOCANDELA DIAGRAM

NAME: LED Strip	TYPE: Indoor lighting	WEIGHT: 75g
SPEC.: 2835 238LED	DIM.: 500*10*1.2MM	SERIAL No.: 20240402002
MFR.: EVERFINE	SUR.: 500*10MM	Shielding Angle:

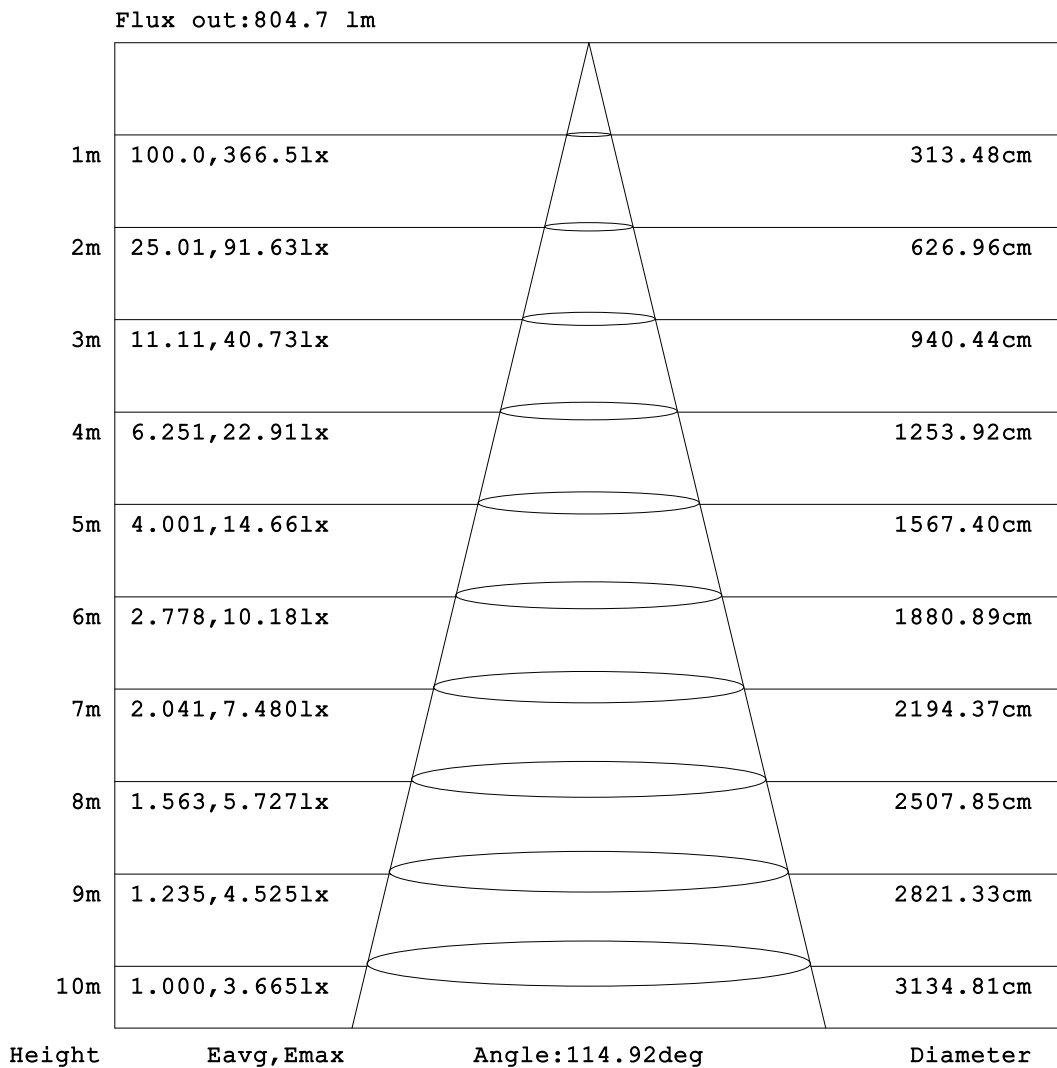


C Range: 0 - 360DEG
 C Interval: 15.0DEG
 Test Speed: HIGH
 Temperature: 25.3°C
 Operators: DAMIN
 Test Date: 2024-04-02

γ Range: 0 - 180DEG
 γ Interval: 1.0DEG
 Test System: EVERFINE GO-2000B_V1 SYSTEM V2.00.471
 Humidity: 65.0%
 Test Distance: 4.880m [K=1.0000]
 Remarks:

AAI Figure

NAME: LED Strip	TYPE: Indoor lighting	WEIGHT: 75g
SPEC.: 2835 238LED	DIM.: 500*10*1.2MM	SERIAL No.: 20240402002
MFR.: EVERFINE	SUR.: 500*10MM	Shielding Angle:



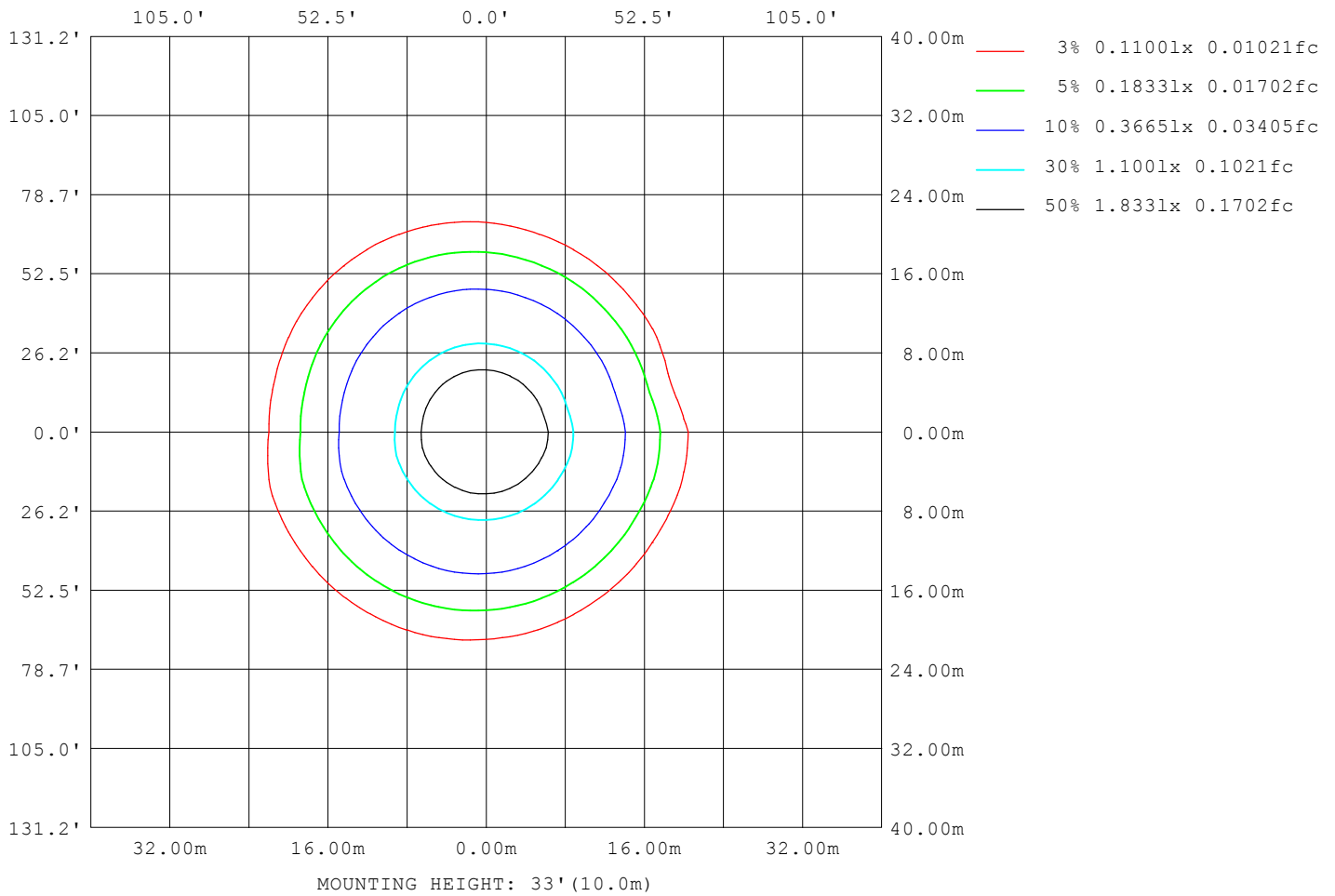
Note: The Curves indicate the illuminated area and the average illumination when the luminaire is at different distance.

C Range: 0 - 360DEG
 C Interval: 15.0DEG
 Test Speed: HIGH
 Temperature: 25.3°C
 Operators: DAMIN
 Test Date: 2024-04-02

γ Range: 0 - 180DEG
 γ Interval: 1.0DEG
 Test System: EVERFINE GO-2000B_V1 SYSTEM V2.00.471
 Humidity: 65.0%
 Test Distance: 4.880m [K=1.0000]
 Remarks:

ISOLUX DIAGRAM

NAME: LED Strip	TYPE: Indoor lighting	WEIGHT: 75g
SPEC.: 2835 238LED	DIM.: 500*10*1.2MM	SERIAL No.: 20240402002
MFR.: EVERFINE	SUR.: 500*10MM	Shielding Angle:



C Range: 0 - 360DEG
 C Interval: 15.0DEG
 Test Speed: HIGH
 Temperature: 25.3°C
 Operators: DAMIN
 Test Date: 2024-04-02

γ Range: 0 - 180DEG
 γ Interval: 1.0DEG
 Test System: EVERFINE GO-2000B_V1 SYSTEM V2.00.471
 Humidity: 65.0%
 Test Distance: 4.880m [K=1.0000]
 Remarks:

LED Avg.L Report

NAME: LED Strip	TYPE: Indoor lighting	WEIGHT: 75g
SPEC.: 2835 238LED	DIM.: 500*10*1.2MM	SERIAL No.: 20240402002
MFR.: EVERFINE	SUR.: 500*10MM	Shielding Angle:

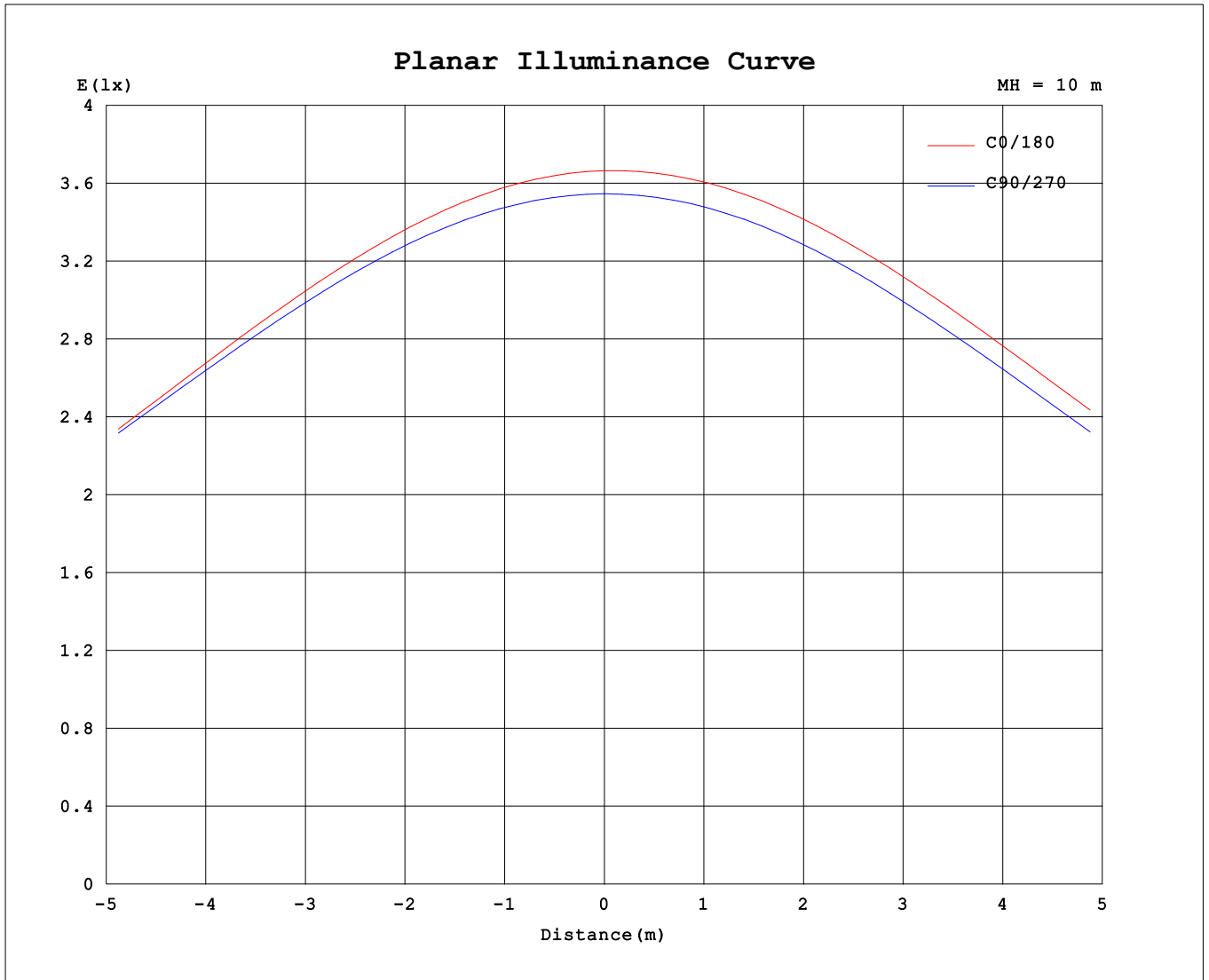
AvgL	cd/m2
L_0~180 (65) av	33065
L_0~180 (75) av	29091
L_0~180 (85) av	26171
L_90~270 (65) av	32404
L_90~270 (75) av	28357
L_90~270 (85) av	21871
L_45 (65) av	32744
L_45 (75) av	29541
L_45 (85) av	30658

Standard: GB/T 29293-2012

C Range: 0 - 360DEG
 C Interval: 15.0DEG
 Test Speed: HIGH
 Temperature:25.3°C
 Operators:DAMIN
 Test Date:2024-04-02

γ Range: 0 - 180DEG
 γ Interval: 1.0DEG
 Test System:EVERFINE GO-2000B_V1 SYSTEM V2.00.471
 Humidity:65.0%
 Test Distance:4.880m [K=1.0000]
 Remarks:

Planar Illuminance Curve



C Range: 0 - 360DEG
 C Interval: 15.0DEG
 Test Speed: HIGH
 Temperature: 25.3°C
 Operators: DAMIN
 Test Date: 2024-04-02

γ Range: 0 - 180DEG
 γ Interval: 1.0DEG
 Test System: EVERFINE GO-2000B_V1 SYSTEM V2.00.471
 Humidity: 65.0%
 Test Distance: 4.880m [K=1.0000]
 Remarks:

LUMINOUS DISTRIBUTION INTENSITY DATA

NAME: LED Strip	TYPE: Indoor lighting	WEIGHT: 75g
SPEC.: 2835 238LED	DIM.: 500*10*1.2MM	SERIAL No.: 20240402002
MFR.: EVERFINE	SUR.: 500*10MM	Shielding Angle:

Table--1

UNIT: cd

C (DEG) \ γ (DEG)	0	15	30	45	60	75	90	105	120	135	150	165	180	195	210	225	240	255	270
0	367	365	361	359	358	357	355	355	356	358	360	363	367	365	361	359	358	357	355
5	364	363	358	356	355	354	353	355	356	358	361	364	366	365	361	359	358	356	354
10	358	357	352	351	350	350	349	351	354	356	359	362	363	362	359	357	356	353	350
15	350	349	344	343	343	343	343	346	348	351	354	358	358	356	354	352	351	347	343
20	339	339	333	332	332	333	334	337	340	344	347	350	349	347	346	344	343	339	334
25	325	325	320	319	319	320	322	326	330	334	337	341	338	336	336	334	332	328	323
30	309	309	303	302	303	305	307	312	317	321	325	328	324	323	323	321	319	314	309
35	289	290	284	283	285	287	290	296	301	306	310	313	308	306	307	306	303	298	292
40	267	268	262	262	263	267	270	277	282	288	292	296	288	288	289	288	285	279	272
45	242	243	237	238	239	243	248	255	261	268	271	276	267	266	269	267	264	258	250
50	215	216	210	211	213	218	223	231	238	245	249	253	243	243	246	244	241	235	226
55	186	186	181	181	184	189	195	204	212	219	223	228	216	217	220	219	216	208	199
60	155	155	149	150	153	159	166	175	184	191	196	201	188	189	193	192	188	180	170
65	122	122	116	118	121	128	134	144	153	161	167	172	158	159	163	163	158	150	139
70	88.4	88.6	84.1	85.8	88.7	95.4	103	113	121	130	136	142	126	128	132	132	127	118	108
75	56.7	57.2	54.0	55.3	57.7	63.9	70.9	81.3	89.7	98.6	105	111	93.9	96.3	101	101	95.6	86.6	75.9
80	29.3	30.3	28.9	30.1	31.2	35.3	41.7	50.8	59.5	68.2	74.4	79.9	62.3	65.0	69.9	70.2	64.9	56.3	45.9
85	11.3	11.9	11.9	12.6	12.5	13.7	17.3	25.3	33.0	40.9	46.8	51.8	34.4	37.1	41.8	42.6	37.7	29.6	20.8
90	2.62	2.84	2.77	2.90	2.69	2.69	2.96	8.17	14.2	20.9	26.0	30.5	14.1	16.4	20.6	21.5	17.3	10.8	3.69
95	1.64	1.59	1.57	1.53	1.45	1.26	1.18	2.27	5.39	9.61	13.4	16.7	4.14	5.79	9.07	10.3	7.25	3.67	1.24
100	1.60	1.53	1.52	1.48	1.40	1.30	1.23	1.20	1.84	3.94	6.05	7.98	1.38	1.79	2.98	3.77	2.43	1.68	1.31
105	1.66	1.64	1.65	1.63	1.56	1.51	1.42	1.33	1.26	1.41	2.16	2.94	1.40	1.45	1.65	1.86	1.66	1.50	1.50
110	1.80	1.81	1.82	1.82	1.79	1.74	1.67	1.56	1.46	1.42	1.39	1.38	1.59	1.59	1.59	1.61	1.64	1.67	1.74
115	1.96	1.98	2.03	2.04	2.02	1.98	1.90	1.79	1.69	1.63	1.59	1.57	1.81	1.80	1.80	1.80	1.85	1.90	1.99
120	2.18	2.20	2.25	2.27	2.25	2.21	2.14	2.03	1.92	1.86	1.81	1.78	2.04	2.03	2.03	2.03	2.08	2.14	2.22
125	2.40	2.42	2.48	2.49	2.47	2.44	2.36	2.26	2.16	2.09	2.04	2.01	2.26	2.26	2.26	2.26	2.31	2.37	2.45
130	2.63	2.65	2.71	2.72	2.70	2.66	2.59	2.49	2.39	2.32	2.26	2.24	2.48	2.48	2.48	2.48	2.54	2.59	2.67
135	2.85	2.88	2.93	2.94	2.92	2.88	2.81	2.72	2.62	2.55	2.49	2.46	2.71	2.70	2.70	2.71	2.76	2.81	2.88
140	3.06	3.10	3.14	3.15	3.13	3.09	3.02	2.93	2.84	2.77	2.72	2.69	2.93	2.92	2.92	2.92	2.97	3.02	3.09
145	3.26	3.32	3.35	3.35	3.32	3.29	3.22	3.15	3.06	3.00	2.94	2.92	3.15	3.14	3.14	3.14	3.18	3.23	3.29
150	3.47	3.53	3.55	3.54	3.51	3.48	3.42	3.36	3.28	3.22	3.17	3.14	3.37	3.35	3.35	3.35	3.39	3.42	3.47
155	3.68	3.72	3.72	3.71	3.68	3.66	3.60	3.56	3.48	3.44	3.40	3.37	3.58	3.56	3.56	3.55	3.58	3.61	3.65
160	3.87	3.89	3.89	3.87	3.84	3.82	3.77	3.74	3.68	3.65	3.61	3.60	3.80	3.75	3.75	3.74	3.76	3.78	3.81
165	4.05	4.05	4.03	4.02	3.98	3.97	3.92	3.90	3.86	3.84	3.81	3.81	4.00	3.94	3.93	3.91	3.93	3.93	3.96
170	4.20	4.19	4.15	4.14	4.11	4.10	4.06	4.05	4.02	4.01	3.99	4.00	4.16	4.10	4.10	4.07	4.08	4.07	4.09
175	4.31	4.30	4.25	4.24	4.21	4.20	4.16	4.17	4.15	4.15	4.14	4.17	4.30	4.24	4.23	4.19	4.20	4.17	4.19
180	4.37	4.34	4.30	4.30	4.26	4.26	4.23	4.24	4.24	4.24	4.24	4.28	4.37	4.33	4.32	4.28	4.28	4.24	4.24

C Range: 0 - 360DEG
 C Interval: 15.0DEG
 Test Speed: HIGH
 Temperature: 25.3°C
 Operators: DAMIN
 Test Date: 2024-04-02

γ Range: 0 - 180DEG
 γ Interval: 1.0DEG
 Test System: EVERFINE GO-2000B_V1 SYSTEM V2.00.471
 Humidity: 65.0%
 Test Distance: 4.880m [K=1.0000]
 Remarks:

LUMINOUS DISTRIBUTION INTENSITY DATA

NAME: LED Strip	TYPE: Indoor lighting	WEIGHT: 75g
SPEC.: 2835 238LED	DIM.: 500*10*1.2MM	SERIAL No.: 20240402002
MFR.: EVERFINE	SUR.: 500*10MM	Shielding Angle:

Table--2

UNIT: cd

C (DEG) \ γ (DEG)	285	300	315	330	345														
0	355	356	358	360	363														
5	353	354	354	356	359														
10	349	348	348	350	352														
15	342	341	340	341	342														
20	332	330	328	329	330														
25	319	317	314	314	315														
30	304	301	298	297	297														
35	286	282	278	277	276														
40	266	261	256	254	253														
45	243	237	232	229	227														
50	217	211	205	201	198														
55	190	183	175	172	168														
60	160	152	144	140	136														
65	129	120	112	108	94.1														
70	96.3	87.6	80.0	76.3	63.5														
75	64.9	56.7	51.0	48.3	38.2														
80	36.4	31.2	27.9	25.3	23.3														
85	14.6	12.6	10.8	10.3	8.05														
90	3.44	2.28	1.73	3.07	3.07														
95	1.36	1.64	1.80	1.87	1.91														
100	1.35	1.46	1.55	1.75	1.93														
105	1.56	1.62	1.69	1.82	1.96														
110	1.79	1.85	1.90	1.96	2.05														
115	2.03	2.08	2.13	2.18	2.22														
120	2.26	2.31	2.35	2.40	2.43														
125	2.49	2.53	2.57	2.63	2.65														
130	2.71	2.75	2.79	2.83	2.86														
135	2.92	2.96	3.00	3.04	3.06														
140	3.13	3.17	3.20	3.23	3.26														
145	3.32	3.35	3.39	3.42	3.45														
150	3.50	3.53	3.56	3.60	3.63														
155	3.67	3.70	3.72	3.76	3.79														
160	3.82	3.85	3.87	3.90	3.94														
165	3.96	3.99	4.00	4.03	4.07														
170	4.09	4.11	4.11	4.14	4.17														
175	4.18	4.20	4.20	4.22	4.25														
180	4.24	4.24	4.24	4.25	4.28														

C Range: 0 - 360DEG
 C Interval: 15.0DEG
 Test Speed: HIGH
 Temperature:25.3°C
 Operators:DAMIN
 Test Date:2024-04-02

γ Range: 0 - 180DEG
 γ Interval: 1.0DEG
 Test System:EVERFINE GO-2000B_V1 SYSTEM V2.00.471
 Humidity:65.0%
 Test Distance:4.880m [K=1.0000]
 Remarks: