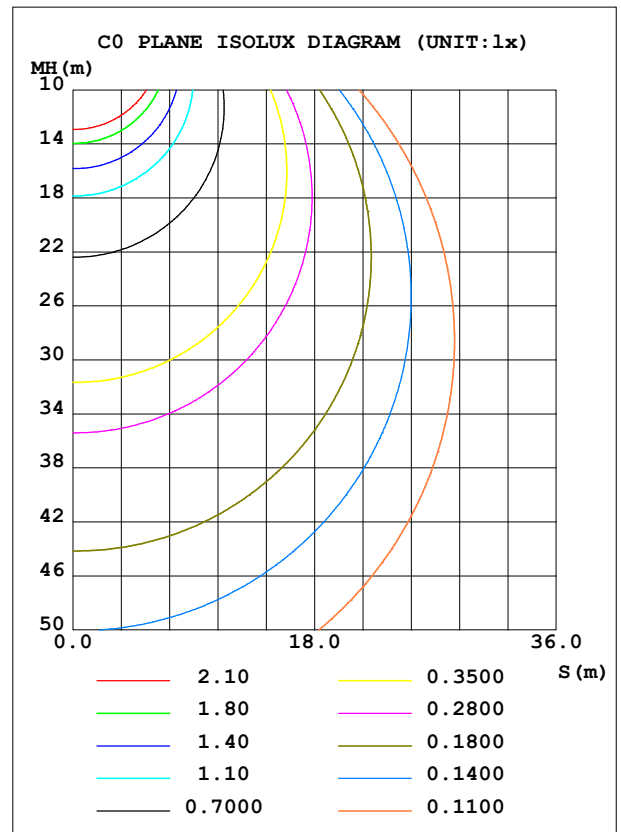
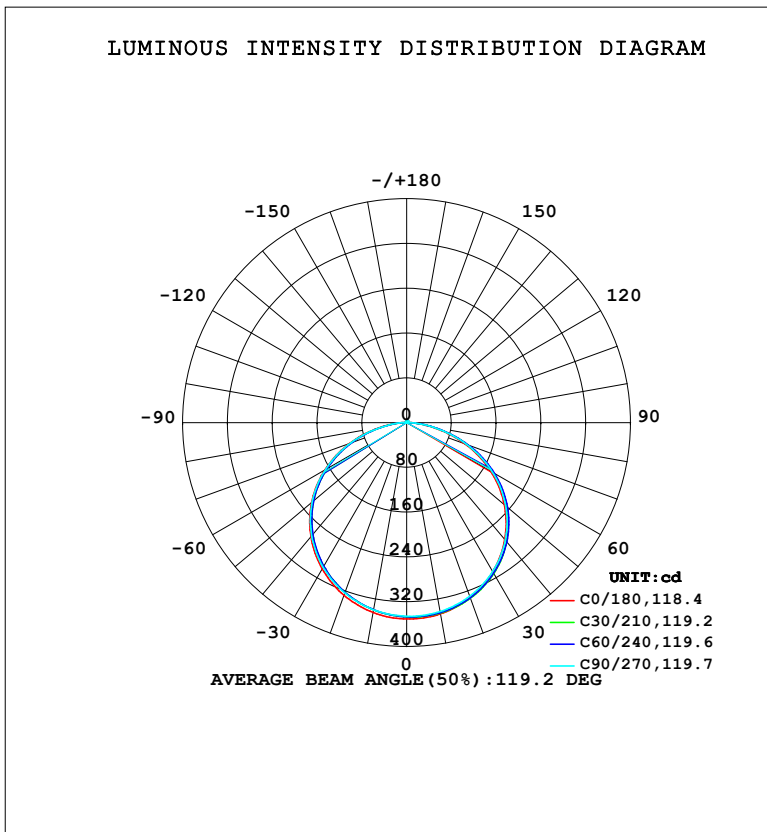


**LUMINAIRE PHOTOMETRIC TEST REPORT**

NAME: LED Strip	TYPE: Indoor lighting	WEIGHT: 20g
SPEC.: 2835 160LED	DIM.: 500*8*1.2MM	SERIAL No.: 20231114013
MFR.: EVERFINE	SUR.: 500*8MM	Shielding Angle:

DATA OF LAMP		PHOTOMETRIC DATA			
MODEL: W24 (WCP) -HR-HQ5-CV-HE-EP		Imax (cd)	352.5	S/MH (C0/180)	1.28
NOMINAL POWER (W)	6.56129	LOR (%)	100.0	S/MH (C90/270)	1.28
RATED VOLTAGE (V)	DC 24V	TOTAL FLUX (lm)	1085.1	$\eta$ UP, DN (C0-180)	0.7, 50.0
NOMINAL FLUX (lm)	1085.07	CIE CLASS	DIRECT	$\eta$ UP, DN (C180-360)	0.7, 48.6
LAMPS INSIDE	1	$\eta$ up (%)	1.3	CIBSE SHR NOM	1.50
TEST VOLTAGE (V)	DC 24V	$\eta$ down (%)	98.7	CIBSE SHR MAX	1.50



C Range: 0 - 360DEG  
 C Interval: 15.0DEG  
 Test Speed: HIGH  
 Temperature: 25.3°C  
 Operators: DAMIN  
 Test Date: 2023-11-15

$\gamma$  Range: 0 - 180DEG  
 $\gamma$  Interval: 1.0DEG  
 Test System: EVERFINE GO-2000B\_V1 SYSTEM V2.00.471  
 Humidity: 65.0%  
 Test Distance: 4.880m [K=1.0000]  
 Remarks:

**ZONAL FLUX DIAGRAM**

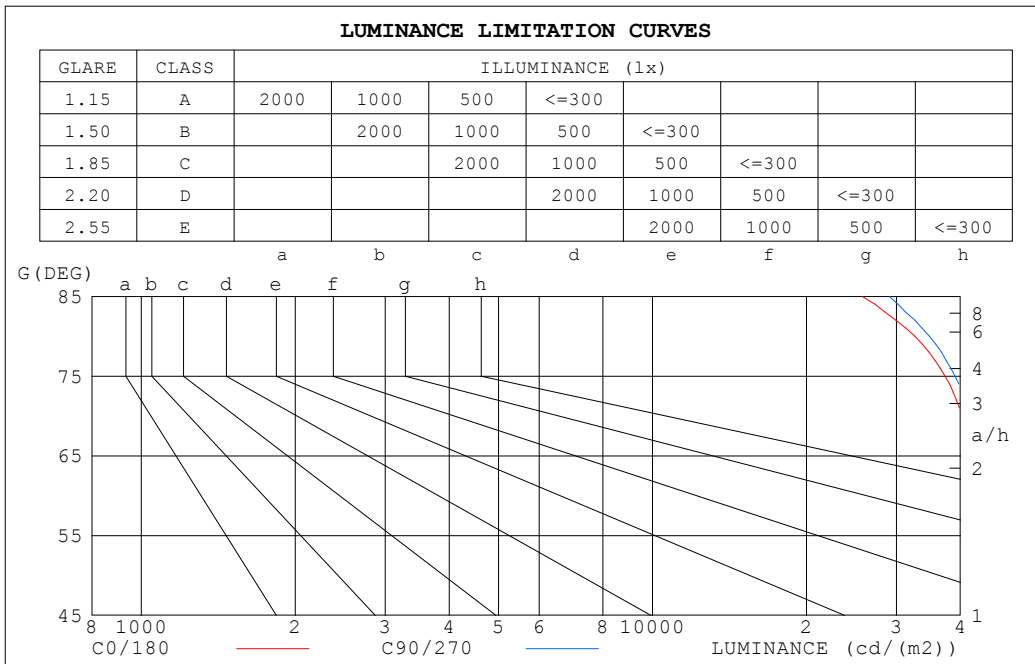
ZONAL FLUX DIAGRAM:

$\gamma$	C0	C45	C90	C135	C180	C225	C270	C315	$\gamma$	$\Phi$ zone	$\Phi$ total	%lum,lamp
10	347.0	345.0	342.9	342.6	344.5	338.6	339.5	343.5	0- 10	32.99	32.99	3.04,3.04
20	332.5	333.3	330.1	327.8	328.1	321.5	323.6	329.5	10- 20	95.21	128.2	11.8,11.8
30	307.7	311.6	307.3	303.2	301.8	295.2	298.5	305.7	20- 30	146.4	274.6	25.3,25.3
40	272.7	279.4	274.3	268.7	266.2	260.0	264.1	271.7	30- 40	180.3	455.0	41.9,41.9
50	227.8	236.0	230.9	224.5	221.7	216.0	220.4	227.6	40- 50	192.0	647.0	59.6,59.6
60	173.3	181.1	177.3	170.6	168.6	163.3	167.4	173.5	50- 60	178.7	825.7	76.1,76.1
70	110.4	117.3	114.3	109.3	108.1	103.5	106.3	111.2	60- 70	140.3	965.9	89,89
80	45.29	50.04	48.36	45.17	45.66	42.34	43.37	46.93	70- 80	81.97	1048	96.6,96.6
90	2.758	4.192	2.851	3.319	3.345	3.063	2.278	3.621	80- 90	22.60	1071	98.7,98.7
100	1.287	1.228	1.244	1.284	1.341	1.365	1.369	1.337	90-100	1.779	1072	98.8,98.8
110	1.605	1.601	1.654	1.660	1.725	1.787	1.820	1.734	100-110	1.569	1074	99,99
120	2.026	2.037	2.100	2.088	2.160	2.230	2.276	2.171	110-120	1.901	1076	99.1,99.1
130	2.447	2.460	2.529	2.515	2.578	2.651	2.701	2.595	120-130	2.103	1078	99.3,99.3
140	2.862	2.886	2.939	2.930	2.975	3.045	3.091	3.002	130-140	2.139	1080	99.5,99.5
150	3.254	3.278	3.318	3.318	3.343	3.403	3.438	3.371	140-150	1.980	1082	99.7,99.7
160	3.634	3.621	3.648	3.663	3.700	3.712	3.735	3.688	150-160	1.622	1084	99.9,99.9
170	3.954	3.923	3.935	3.956	3.999	3.965	3.984	3.953	160-170	1.079	1085	100,100
180	4.152	4.109	4.114	4.127	4.147	4.108	4.114	4.117	170-180	0.3844	1085	100,100
DEG	LUMINOUS INTENSITY:cd									UNIT:lm		

C Range: 0 - 360DEG  
 C Interval: 15.0DEG  
 Test Speed: HIGH  
 Temperature:25.3°C  
 Operators:DAMIN  
 Test Date:2023-11-15

$\gamma$  Range: 0 - 180DEG  
 $\gamma$  Interval: 1.0DEG  
 Test System:EVERFINE GO-2000B\_V1 SYSTEM V2.00.471  
 Humidity:65.0%  
 Test Distance:4.880m [K=1.0000]  
 Remarks:

**LUMINANCE LIMITATION CURVES**



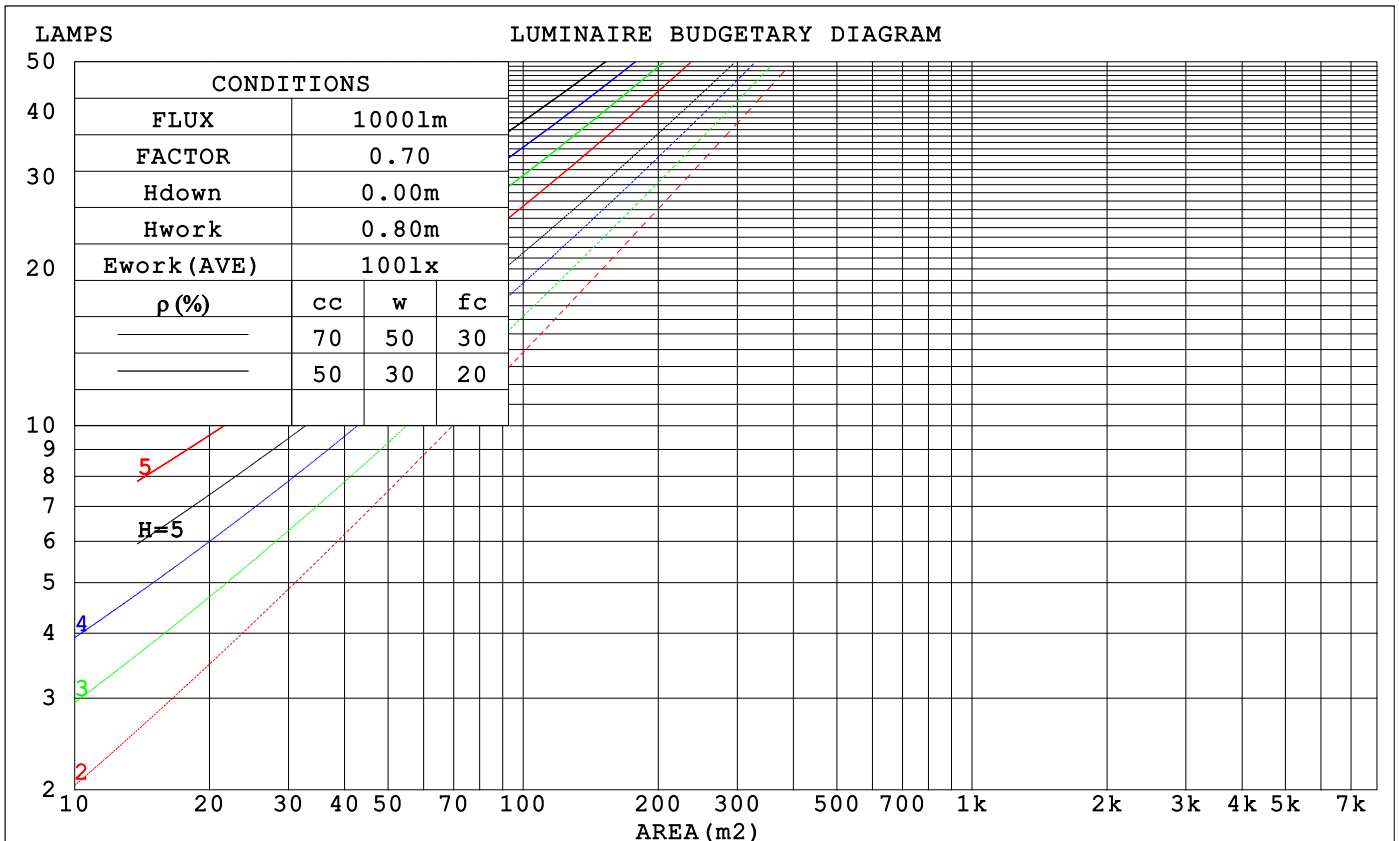
LUMINANCE cd/(m2)		
G (DEG)	C0/180	C90/270
85	25749	29058
80	32600	34813
75	37342	39066
70	40333	41770
65	42227	43418
60	43317	44313
55	43958	44753
50	44290	44898
45	44448	44875

C Range: 0 - 360DEG  
 C Interval: 15.0DEG  
 Test Speed: HIGH  
 Temperature: 25.3°C  
 Operators: DAMIN  
 Test Date: 2023-11-15

γ Range: 0 - 180DEG  
 γ Interval: 1.0DEG  
 Test System: EVERFINE GO-2000B\_V1 SYSTEM V2.00.471  
 Humidity: 65.0%  
 Test Distance: 4.880m [K=1.0000]  
 Remarks:

**CU AND LUMINAIRE BUDGETARY ESTIMATE DIAGRAM**

$\rho_{cc}$	80%			70%			50%			30%			10%			0
$\rho_w$	50%	30%	10%	50%	30%	10%	50%	30%	10%	50%	30%	10%	50%	30%	10%	0
$\rho_{fc}$	20%			20%			20%			20%			20%			0
RCR	RCR:Room Cavity Ratio			Coefficients of Utilization(CU)												
0.0	1.19	1.19	1.19	1.16	1.16	1.16	1.10	1.10	1.10	1.05	1.05	1.05	1.01	1.01	1.01	.99
1.0	1.03	.99	.95	1.01	.97	.93	.96	.93	.90	.92	.89	.87	.88	.86	.84	.82
2.0	.89	.82	.77	.87	.81	.75	.84	.78	.74	.80	.76	.72	.77	.73	.70	.68
3.0	.78	.70	.63	.77	.69	.62	.73	.67	.61	.70	.65	.60	.68	.63	.59	.56
4.0	.69	.60	.53	.68	.59	.53	.65	.58	.52	.62	.56	.51	.60	.55	.50	.48
5.0	.62	.52	.46	.60	.52	.45	.58	.50	.45	.56	.49	.44	.54	.48	.43	.41
6.0	.55	.46	.40	.54	.46	.39	.52	.45	.39	.50	.44	.38	.49	.43	.38	.36
7.0	.50	.41	.35	.49	.41	.35	.47	.40	.34	.46	.39	.34	.44	.38	.34	.32
8.0	.46	.37	.31	.45	.37	.31	.43	.36	.31	.42	.35	.30	.41	.35	.30	.28
9.0	.42	.33	.28	.41	.33	.28	.40	.33	.27	.39	.32	.27	.37	.31	.27	.25
10.0	.38	.30	.25	.38	.30	.25	.37	.30	.25	.36	.29	.25	.35	.29	.24	.23



C Range: 0 - 360DEG  
 C Interval: 15.0DEG  
 Test Speed: HIGH  
 Temperature:25.3°C  
 Operators:DAMIN  
 Test Date:2023-11-15

$\gamma$  Range: 0 - 180DEG  
 $\gamma$  Interval: 1.0DEG  
 Test System:EVERFINE GO-2000B\_V1 SYSTEM V2.00.471  
 Humidity:65.0%  
 Test Distance:4.880m [K=1.0000]  
 Remarks:

**WEC AND CCEC**

$\rho_{cc}$	80%			70%			50%			30%			10%			0
$\rho_w$	50%	30%	10%	50%	30%	10%	50%	30%	10%	50%	30%	10%	50%	30%	10%	0
$\rho_{fc}$	20%			20%			20%			20%			20%			0
RCR	RCR:Room Cavity Ratio						Wall Exitance Coefficients (WEC)									
0.0																
1.0	.318	.181	.057	.310	.177	.056	.296	.170	.054	.283	.163	.052	.272	.157	.051	
2.0	.298	.163	.050	.292	.161	.049	.279	.155	.048	.268	.150	.047	.257	.145	.046	
3.0	.275	.146	.044	.269	.144	.043	.258	.140	.043	.248	.136	.042	.239	.132	.041	
4.0	.253	.132	.039	.248	.130	.038	.238	.126	.038	.229	.123	.037	.221	.120	.037	
5.0	.234	.119	.035	.229	.118	.034	.220	.115	.034	.212	.112	.033	.205	.109	.033	
6.0	.217	.109	.031	.212	.107	.031	.205	.105	.031	.197	.102	.030	.190	.100	.030	
7.0	.201	.100	.028	.198	.098	.028	.191	.096	.028	.184	.094	.027	.178	.092	.027	
8.0	.188	.092	.026	.184	.091	.026	.178	.089	.025	.172	.087	.025	.167	.086	.025	
9.0	.176	.085	.024	.173	.084	.024	.167	.083	.023	.162	.081	.023	.157	.080	.023	
10.0	.165	.079	.022	.162	.078	.022	.157	.077	.022	.152	.076	.022	.148	.074	.021	

$\rho_{cc}$	80%			70%			50%			30%			10%			0
$\rho_w$	50%	30%	10%	50%	30%	10%	50%	30%	10%	50%	30%	10%	50%	30%	10%	0
$\rho_{fc}$	20%			20%			20%			20%			20%			0
RCR	RCR:Room Cavity Ratio						Ceiling Cavity Exitance Coefficients (CCEC)									
0.0	.201	.201	.201	.172	.172	.172	.117	.117	.117	.067	.067	.067	.022	.022	.022	
1.0	.191	.166	.144	.164	.143	.124	.112	.098	.086	.064	.057	.050	.021	.018	.016	
2.0	.183	.142	.108	.157	.122	.093	.108	.085	.065	.062	.049	.038	.020	.016	.012	
3.0	.176	.125	.084	.151	.108	.073	.104	.075	.051	.060	.044	.030	.019	.014	.010	
4.0	.168	.112	.068	.144	.096	.059	.099	.067	.042	.057	.039	.025	.018	.013	.008	
5.0	.161	.101	.057	.138	.088	.050	.095	.061	.035	.055	.036	.021	.018	.012	.007	
6.0	.154	.093	.049	.132	.080	.043	.091	.056	.030	.053	.033	.018	.017	.011	.006	
7.0	.147	.086	.043	.126	.075	.038	.087	.052	.027	.051	.031	.016	.016	.010	.005	
8.0	.140	.080	.039	.121	.070	.034	.084	.049	.024	.049	.029	.014	.016	.009	.005	
9.0	.134	.075	.036	.116	.065	.031	.080	.046	.022	.047	.027	.013	.015	.009	.004	
10.0	.129	.071	.033	.111	.062	.029	.077	.043	.020	.045	.026	.012	.015	.008	.004	

C Range: 0 - 360DEG  
 C Interval: 15.0DEG  
 Test Speed: HIGH  
 Temperature: 25.3°C  
 Operators: DAMIN  
 Test Date: 2023-11-15

$\gamma$  Range: 0 - 180DEG  
 $\gamma$  Interval: 1.0DEG  
 Test System: EVERFINE GO-2000B\_V1 SYSTEM V2.00.471  
 Humidity: 65.0%  
 Test Distance: 4.880m [K=1.0000]  
 Remarks:

**UGR(Unified Glare Rating) Table**

ceiling/cavity	0.7	0.7	0.5	0.5	0.3	0.7	0.7	0.5	0.5	0.3
walls	0.5	0.3	0.5	0.3	0.3	0.5	0.3	0.5	0.3	0.3
working plane	0.2	0.2	0.2	0.2	0.2	0.2	0.2	0.2	0.2	0.2
Room dimensions	Viewed crosswise					Viewed endwise				
x = 2H y = 2H	25.9	27.5	26.2	27.7	27.9	26.0	27.6	26.3	27.8	28.0
3H	27.5	28.9	27.8	29.2	29.5	27.7	29.1	28.0	29.3	29.6
4H	28.2	29.5	28.5	29.8	30.1	28.3	29.7	28.7	29.9	30.2
6H	28.6	29.9	28.9	30.2	30.5	28.8	30.1	29.1	30.3	30.7
8H	28.7	29.9	29.1	30.2	30.6	28.9	30.1	29.3	30.5	30.8
12H	28.8	29.9	29.1	30.3	30.6	29.0	30.2	29.4	30.5	30.8
4H 2H	26.6	28.0	26.9	28.2	28.5	26.7	28.0	27.0	28.3	28.6
3H	28.4	29.6	28.8	29.9	30.2	28.5	29.7	28.9	30.0	30.4
4H	29.2	30.2	29.5	30.6	30.9	29.3	30.4	29.7	30.7	31.1
6H	29.7	30.7	30.1	31.0	31.4	29.9	30.8	30.3	31.2	31.6
8H	29.9	30.8	30.3	31.2	31.6	30.1	31.0	30.5	31.4	31.8
12H	30.0	30.8	30.4	31.2	31.6	30.2	31.0	30.6	31.4	31.9
8H 4H	29.5	30.3	29.9	30.7	31.2	29.6	30.5	30.0	30.9	31.3
6H	30.2	30.9	30.6	31.3	31.8	30.3	31.1	30.8	31.5	32.0
8H	30.4	31.1	30.9	31.5	32.0	30.6	31.3	31.1	31.7	32.2
12H	30.6	31.2	31.1	31.6	32.1	30.8	31.4	31.3	31.8	32.3
12H 4H	29.5	30.3	29.9	30.7	31.1	29.6	30.4	30.0	30.8	31.3
6H	30.2	30.9	30.7	31.3	31.8	30.4	31.0	30.9	31.5	32.0
8H	30.5	31.1	31.0	31.6	32.1	30.7	31.3	31.2	31.7	32.2
Variations with the observer position at spacings(CIE Pub.117):										
S = 1.0H	+ 0.1 / - 0.2					+ 0.1 / - 0.2				
1.5H	+ 0.2 / - 0.3					+ 0.2 / - 0.3				
2.0H	+ 0.2 / - 0.4					+ 0.2 / - 0.4				

CIE Pub.117, 1085 lm Total Lamp Luminous Flux Correct (8log(F/F0) = 0.3)  
 Area: 0.008 m2

C Range: 0 - 360DEG  
 C Interval: 15.0DEG  
 Test Speed: HIGH  
 Temperature:25.3°C  
 Operators:DAMIN  
 Test Date:2023-11-15

γ Range: 0 - 180DEG  
 γ Interval: 1.0DEG  
 Test System:EVERFINE GO-2000B\_V1 SYSTEM V2.00.471  
 Humidity:65.0%  
 Test Distance:4.880m [K=1.0000]  
 Remarks:

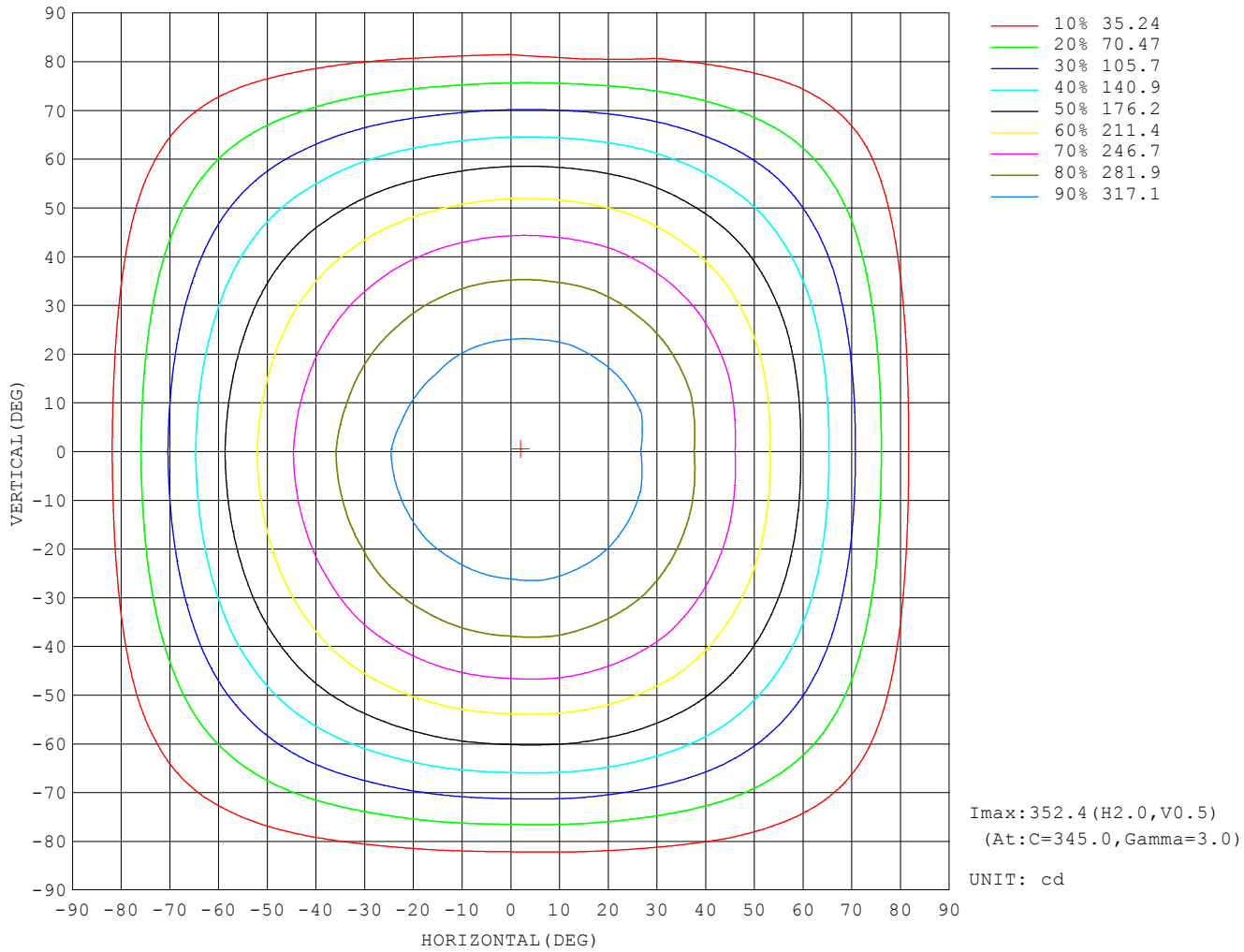
**UTILIZATION FACTORS TABLE**

REFLECTANCE										
Ceiling	0.8	0.8	0.8	0.7	0.7	0.7	0.5	0.5	0.5	0
Walls	0.7	0.5	0.3	0.7	0.5	0.3	0.7	0.5	0.3	0
Working plane	0.2	0.2	0.2	0.2	0.2	0.2	0.2	0.2	0.2	0
ROOM INDEX	UTILIZATION FACTORS (PERCENT) $k(RI) \times RCR = 5$									
$k = 0.60$	56	44	37	55	44	37	54	43	37	30
0.80	66	54	47	65	54	46	63	53	46	39
1.00	74	63	56	73	62	55	71	64	55	47
1.25	82	71	63	80	70	63	77	68	62	54
1.50	87	76	69	85	76	69	82	74	68	60
2.00	94	85	78	92	84	77	88	81	76	67
2.50	98	90	84	96	88	83	92	85	81	72
3.00	101	94	88	99	92	87	95	89	85	76
4.00	105	100	95	103	98	93	98	94	90	81
5.00	108	103	99	105	101	97	101	97	94	84
ROOM INDEX	UF (total)									Direct
According to DIN EN 13032-2 2004			Suspended				SHRNOM = 1.25			

C Range: 0 - 360DEG  
 C Interval: 15.0DEG  
 Test Speed: HIGH  
 Temperature: 25.3°C  
 Operators: DAMIN  
 Test Date: 2023-11-15

$\gamma$  Range: 0 - 180DEG  
 $\gamma$  Interval: 1.0DEG  
 Test System: EVERFINE GO-2000B\_V1 SYSTEM V2.00.471  
 Humidity: 65.0%  
 Test Distance: 4.880m [K=1.0000]  
 Remarks:

**ISOCANDELA DIAGRAM**

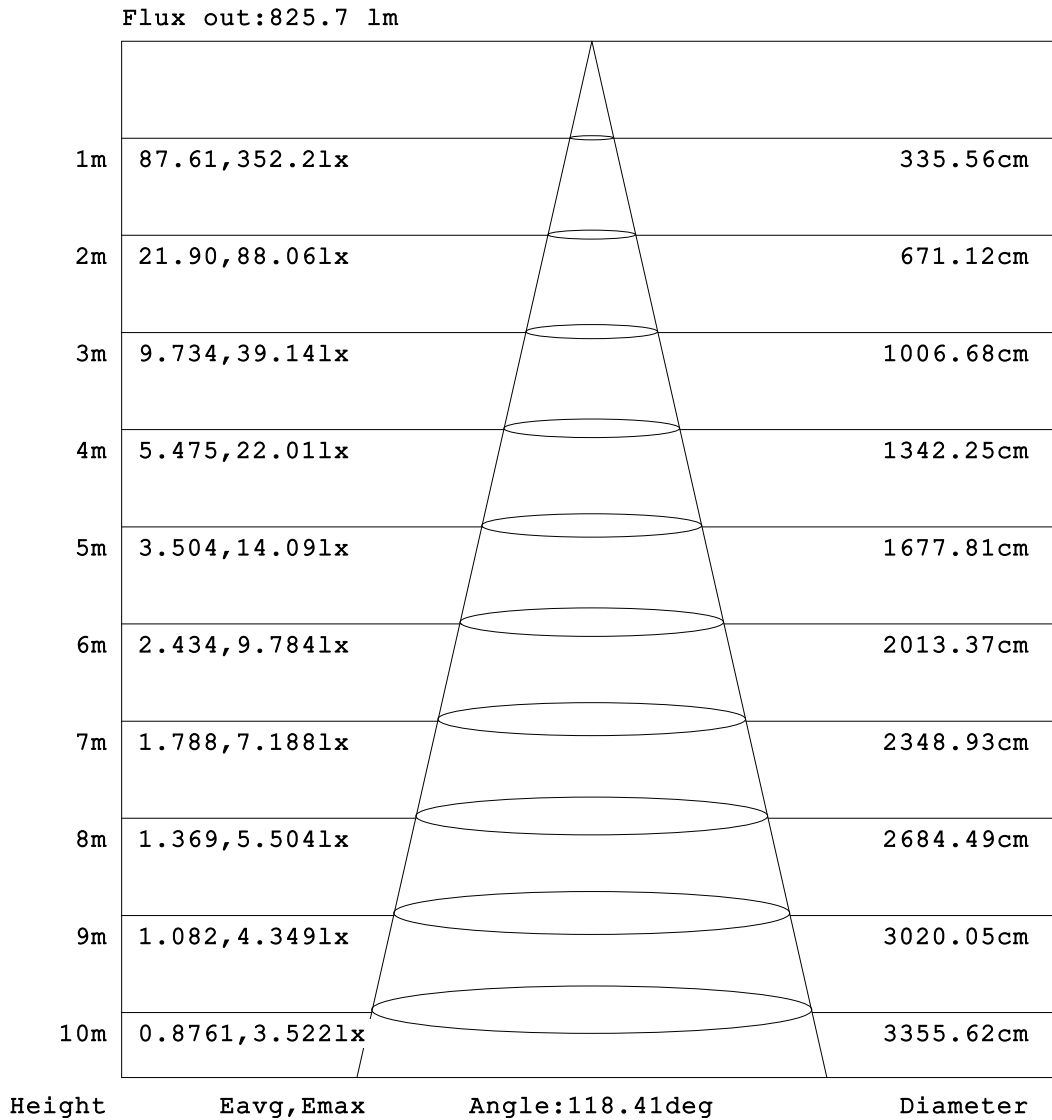


C Range: 0 - 360DEG  
 C Interval: 15.0DEG  
 Test Speed: HIGH  
 Temperature: 25.3°C  
 Operators: DAMIN  
 Test Date: 2023-11-15

$\gamma$  Range: 0 - 180DEG  
 $\gamma$  Interval: 1.0DEG  
 Test System: EVERFINE GO-2000B\_V1 SYSTEM V2.00.471  
 Humidity: 65.0%  
 Test Distance: 4.880m [K=1.0000]  
 Remarks:



**AAI Figure**

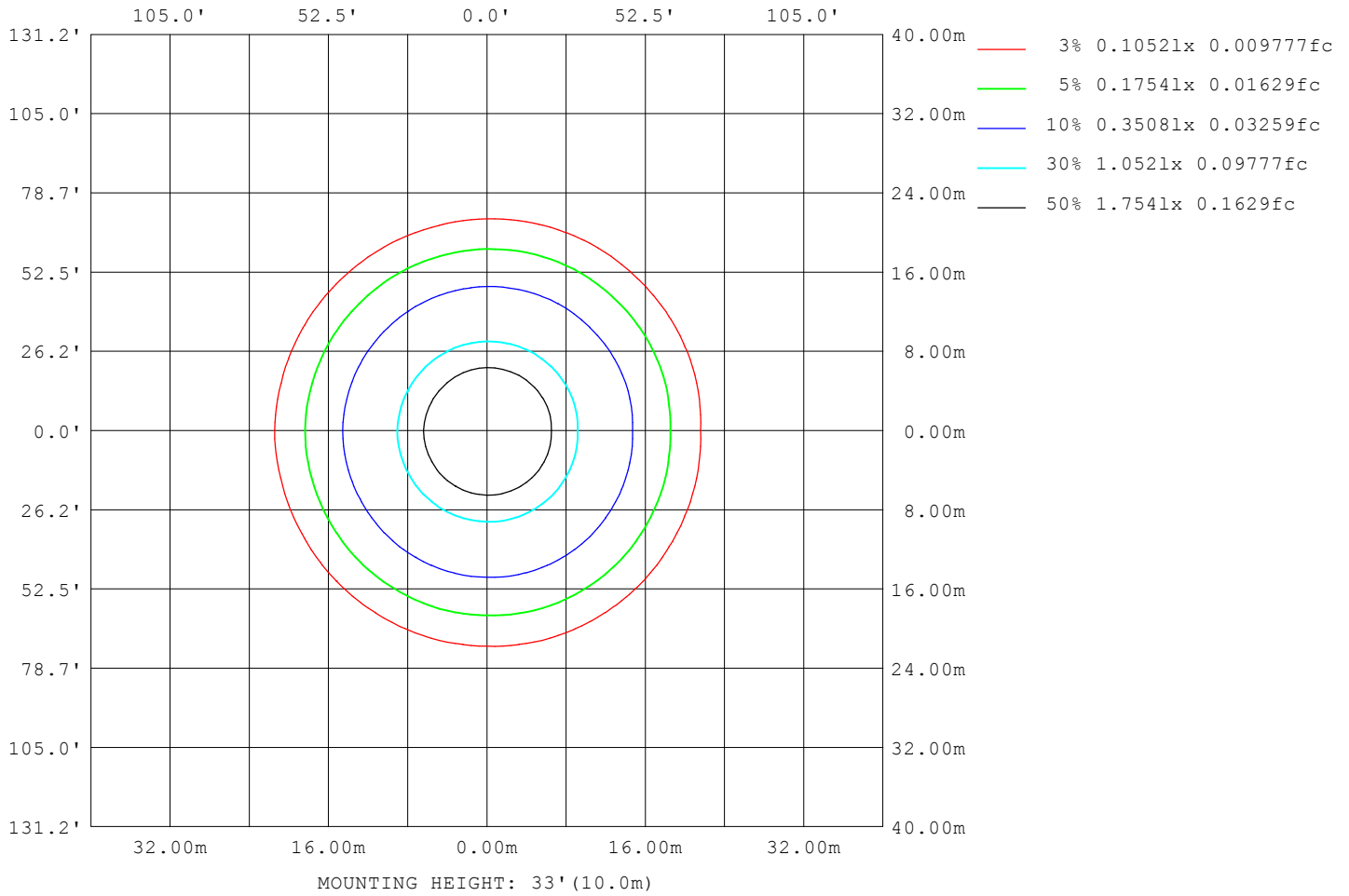


**Note:**The Curves indicate the illuminated area and the average illumination when the luminaire is at different distance.

C Range: 0 - 360DEG  
 C Interval: 15.0DEG  
 Test Speed: HIGH  
 Temperature:25.3°C  
 Operators:DAMIN  
 Test Date:2023-11-15

γ Range: 0 - 180DEG  
 γ Interval: 1.0DEG  
 Test System:EVERFINE GO-2000B\_V1 SYSTEM V2.00.471  
 Humidity:65.0%  
 Test Distance:4.880m [K=1.0000]  
 Remarks:

**ISOLUX DIAGRAM**



C Range: 0 - 360DEG  
 C Interval: 15.0DEG  
 Test Speed: HIGH  
 Temperature: 25.3°C  
 Operators: DAMIN  
 Test Date: 2023-11-15

γ Range: 0 - 180DEG  
 γ Interval: 1.0DEG  
 Test System: EVERFINE GO-2000B\_V1 SYSTEM V2.00.471  
 Humidity: 65.0%  
 Test Distance: 4.880m [K=1.0000]  
 Remarks:

LED Avg.L Report

NAME: LED Strip	TYPE: Indoor lighting	WEIGHT: 20g
SPEC.: 2835 160LED	DIM.: 500*8*1.2MM	SERIAL No.: 20231114013
MFR.: EVERFINE	SUR.: 500*8MM	Shielding Angle:

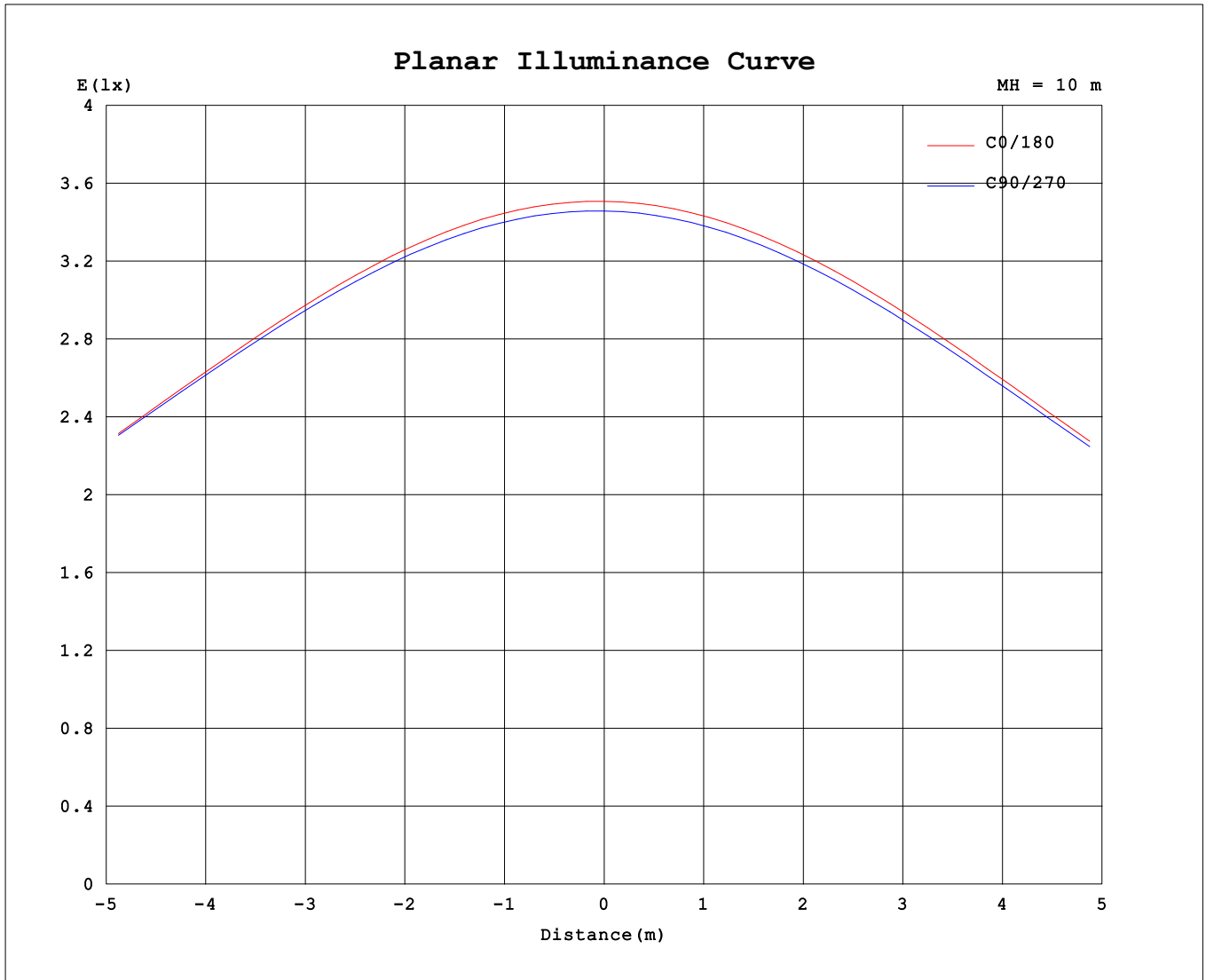
AvgL	cd/m2
L_0~180 (65) av	41687
L_0~180 (75) av	37120
L_0~180 (85) av	26722
L_90~270 (65) av	42070
L_90~270 (75) av	37469
L_90~270 (85) av	26943
L_45 (65) av	41993
L_45 (75) av	37545
L_45 (85) av	27606

Standard: GB/T 29293-2012

C Range: 0 - 360DEG  
 C Interval: 15.0DEG  
 Test Speed: HIGH  
 Temperature:25.3°C  
 Operators:DAMIN  
 Test Date:2023-11-15

γ Range: 0 - 180DEG  
 γ Interval: 1.0DEG  
 Test System:EVERFINE GO-2000B\_V1 SYSTEM V2.00.471  
 Humidity:65.0%  
 Test Distance:4.880m [K=1.0000]  
 Remarks:

**Planar Illuminance Curve**



C Range: 0 - 360DEG  
 C Interval: 15.0DEG  
 Test Speed: HIGH  
 Temperature: 25.3°C  
 Operators: DAMIN  
 Test Date: 2023-11-15

γ Range: 0 - 180DEG  
 γ Interval: 1.0DEG  
 Test System: EVERFINE GO-2000B\_V1 SYSTEM V2.00.471  
 Humidity: 65.0%  
 Test Distance: 4.880m [K=1.0000]  
 Remarks:

LUMINOUS DISTRIBUTION INTENSITY DATA

Table--1

UNIT: cd

C (DEG) \ γ (DEG)	0	15	30	45	60	75	90	105	120	135	150	165	180	195	210	225	240	255	270
0	351	350	347	346	347	347	346	346	347	348	350	352	351	350	347	346	347	347	346
5	350	350	348	347	347	347	346	346	346	346	348	350	349	347	345	344	344	344	344
10	347	348	345	345	345	344	343	343	342	343	343	345	345	342	340	339	339	339	339
15	341	342	341	340	340	339	338	337	336	336	337	337	338	334	332	331	332	332	333
20	333	335	334	333	333	332	330	329	328	328	327	328	328	325	323	321	322	323	324
25	321	324	324	324	323	322	320	319	317	317	316	316	316	312	311	309	310	311	312
30	308	311	311	312	311	310	307	306	304	303	302	301	302	298	296	295	296	297	298
35	291	295	296	297	296	295	292	290	288	287	285	285	285	282	280	279	280	281	282
40	273	276	278	279	278	277	274	273	270	269	266	266	266	263	261	260	261	262	264
45	251	255	257	259	258	257	254	252	250	248	245	245	245	242	240	239	240	241	243
50	228	232	234	236	235	234	231	229	226	225	222	221	222	219	217	216	217	218	220
55	202	205	208	210	210	209	205	204	201	199	196	195	196	193	192	191	191	192	195
60	173	177	179	181	181	180	177	176	173	171	168	167	169	166	165	163	164	165	167
65	143	146	148	150	150	150	147	145	143	141	138	137	139	136	136	134	135	135	138
70	110	114	115	117	117	117	114	113	111	109	107	106	108	106	105	104	104	104	106
75	77.3	80.3	81.4	83.3	83.2	83.3	80.9	80.2	77.9	76.7	74.6	74.1	76.4	74.3	73.6	72.4	72.7	72.7	74.3
80	45.3	47.5	48.6	50.0	50.1	49.9	48.4	47.7	46.2	45.2	43.7	43.1	45.7	44.0	43.3	42.3	42.3	42.1	43.4
85	18.0	19.8	20.3	21.7	21.3	21.6	20.3	20.3	19.0	18.8	17.4	17.3	19.3	18.0	17.8	16.9	17.1	16.6	17.3
90	2.76	3.41	3.66	4.19	3.95	3.70	2.85	3.42	3.34	3.32	2.95	2.87	3.35	3.05	3.18	3.06	3.11	2.69	2.28
95	1.38	1.47	1.55	1.55	1.35	1.17	1.18	1.26	1.32	1.46	1.55	1.61	1.60	1.71	1.75	1.53	1.33	1.31	1.26
100	1.29	1.27	1.25	1.23	1.22	1.23	1.24	1.29	1.29	1.28	1.27	1.29	1.34	1.35	1.35	1.36	1.39	1.38	1.37
105	1.39	1.39	1.38	1.39	1.39	1.41	1.42	1.43	1.43	1.44	1.45	1.46	1.50	1.52	1.55	1.56	1.58	1.58	1.58
110	1.60	1.60	1.59	1.60	1.61	1.63	1.65	1.65	1.65	1.66	1.66	1.68	1.72	1.75	1.77	1.79	1.81	1.81	1.82
115	1.82	1.81	1.80	1.82	1.83	1.86	1.88	1.88	1.87	1.88	1.88	1.89	1.95	1.97	2.00	2.01	2.03	2.04	2.05
120	2.03	2.02	2.02	2.04	2.05	2.08	2.10	2.10	2.09	2.09	2.09	2.10	2.16	2.18	2.21	2.23	2.25	2.27	2.28
125	2.24	2.23	2.24	2.25	2.26	2.29	2.31	2.31	2.30	2.30	2.30	2.31	2.37	2.39	2.42	2.44	2.47	2.48	2.49
130	2.45	2.45	2.46	2.46	2.47	2.51	2.53	2.53	2.52	2.51	2.51	2.52	2.58	2.60	2.63	2.65	2.68	2.69	2.70
135	2.66	2.67	2.67	2.67	2.69	2.72	2.74	2.74	2.73	2.73	2.72	2.73	2.78	2.80	2.83	2.85	2.88	2.89	2.90
140	2.86	2.89	2.87	2.89	2.90	2.92	2.94	2.94	2.93	2.93	2.92	2.93	2.97	3.00	3.03	3.04	3.07	3.08	3.09
145	3.06	3.09	3.07	3.08	3.09	3.11	3.13	3.14	3.13	3.13	3.12	3.13	3.16	3.18	3.21	3.23	3.25	3.26	3.27
150	3.25	3.29	3.27	3.28	3.28	3.30	3.32	3.33	3.32	3.32	3.31	3.32	3.34	3.36	3.38	3.40	3.42	3.43	3.44
155	3.45	3.47	3.46	3.46	3.46	3.48	3.49	3.50	3.49	3.50	3.49	3.50	3.52	3.52	3.55	3.56	3.58	3.59	3.59
160	3.63	3.65	3.63	3.62	3.62	3.64	3.65	3.67	3.66	3.66	3.65	3.67	3.70	3.67	3.70	3.71	3.73	3.73	3.74
165	3.81	3.81	3.78	3.78	3.78	3.80	3.80	3.82	3.81	3.82	3.81	3.83	3.86	3.82	3.84	3.85	3.86	3.86	3.87
170	3.95	3.95	3.92	3.92	3.92	3.94	3.93	3.95	3.95	3.96	3.95	3.97	4.00	3.95	3.97	3.97	3.98	3.98	3.98
175	4.07	4.06	4.04	4.04	4.03	4.05	4.04	4.06	4.05	4.06	4.06	4.08	4.10	4.05	4.06	4.06	4.07	4.06	4.07
180	4.15	4.13	4.11	4.11	4.11	4.11	4.11	4.11	4.12	4.13	4.13	4.14	4.15	4.13	4.12	4.11	4.11	4.11	4.11

C Range: 0 - 360DEG  
 C Interval: 15.0DEG  
 Test Speed: HIGH  
 Temperature:25.3°C  
 Operators:DAMIN  
 Test Date:2023-11-15

γ Range: 0 - 180DEG  
 γ Interval: 1.0DEG  
 Test System:EVERFINE GO-2000B\_V1 SYSTEM V2.00.471  
 Humidity:65.0%  
 Test Distance:4.880m [K=1.0000]  
 Remarks:

LUMINOUS DISTRIBUTION INTENSITY DATA

Table--2

UNIT: cd

C (DEG) \ γ (DEG)	285	300	315	330	345														
0	346	347	348	350	352														
5	344	346	347	349	352														
10	340	342	343	346	349														
15	334	336	338	341	344														
20	325	328	330	333	335														
25	314	317	319	322	325														
30	300	304	306	309	311														
35	284	288	290	293	295														
40	266	270	272	275	276														
45	246	249	251	254	255														
50	223	226	228	230	231														
55	197	201	202	204	205														
60	170	173	173	176	177														
65	140	142	143	146	146														
70	108	110	111	113	114														
75	75.7	77.8	78.5	80.5	80.9														
80	44.5	46.0	46.9	48.3	48.7														
85	13.9	19.2	19.6	20.7	20.5														
90	2.60	3.54	3.62	3.91	3.71														
95	1.27	1.50	1.63	1.64	1.56														
100	1.35	1.34	1.34	1.37	1.40														
105	1.56	1.54	1.51	1.50	1.48														
110	1.79	1.76	1.73	1.71	1.69														
115	2.02	1.99	1.95	1.93	1.91														
120	2.24	2.21	2.17	2.15	2.12														
125	2.45	2.42	2.38	2.36	2.32														
130	2.66	2.63	2.60	2.58	2.54														
135	2.87	2.84	2.80	2.79	2.76														
140	3.06	3.03	3.00	2.98	2.97														
145	3.24	3.22	3.19	3.18	3.17														
150	3.42	3.40	3.37	3.36	3.36														
155	3.57	3.56	3.53	3.54	3.53														
160	3.72	3.71	3.69	3.69	3.69														
165	3.85	3.85	3.83	3.84	3.84														
170	3.97	3.97	3.95	3.96	3.97														
175	4.06	4.07	4.05	4.07	4.08														
180	4.12	4.13	4.12	4.12	4.14														

C Range: 0 - 360DEG  
 C Interval: 15.0DEG  
 Test Speed: HIGH  
 Temperature:25.3°C  
 Operators:DAMIN  
 Test Date:2023-11-15

γ Range: 0 - 180DEG  
 γ Interval: 1.0DEG  
 Test System:EVERFINE GO-2000B\_V1 SYSTEM V2.00.471  
 Humidity:65.0%  
 Test Distance:4.880m [K=1.0000]  
 Remarks: