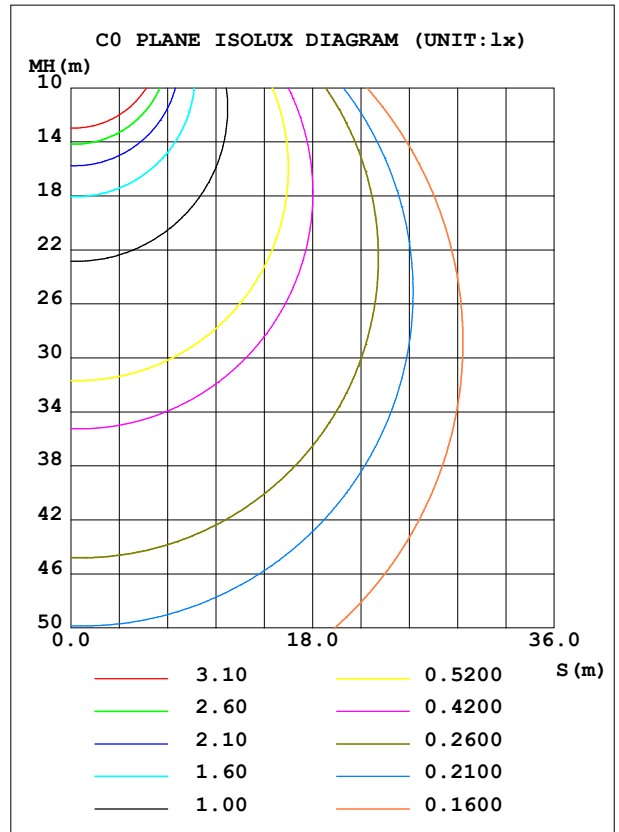
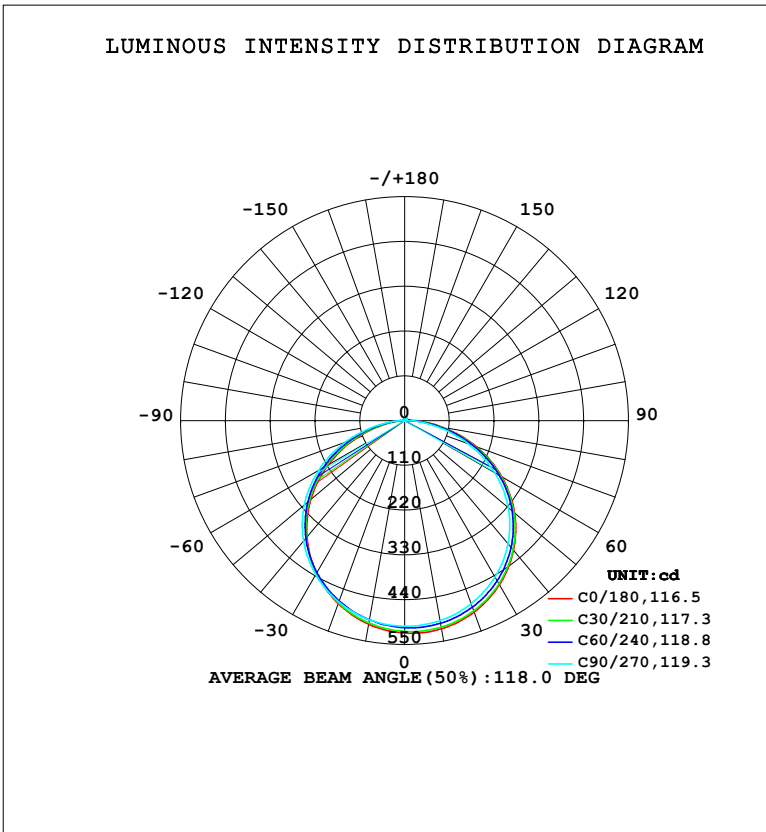


**LUMINAIRE PHOTOMETRIC TEST REPORT**

NAME: LED Strip	TYPE: Indoor lighting	WEIGHT: 20g
SPEC.: 2835 128LED	DIM.: 1000*8*1.2MM	SERIAL No.: 20230808010
MFR.: EVERFINE	SUR.: 1000*8MM	Shielding Angle:

DATA OF LAMP		PHOTOMETRIC DATA			
WNO28WB-24 (WCP) -HR-JK-CV-UE-EP		Imax (cd)	522.7	S/MH (C0/180)	1.24
NOMINAL POWER (W)	9.04459	LOR (%)	100.0	S/MH (C90/270)	1.29
RATED VOLTAGE (V)	DC 24V	TOTAL FLUX (lm)	1587.0	<input type="checkbox"/> UP, DN (C0-180)	1.1,50.4
NOMINAL FLUX (lm)	1586.95	CIE CLASS	DIRECT	<input type="checkbox"/> UP, DN (C180-360)	0.9,47.7
LAMPS INSIDE	1	<input type="checkbox"/> up (%)	2.0	CIBSE SHR NOM	1.25
TEST VOLTAGE (V)	DC 24V	<input type="checkbox"/> down (%)	98.0	CIBSE SHR MAX	1.35



C Range: 0 - 360DEG  
 C Interval: 15.0DEG  
 Test Speed: HIGH  
 Temperature: 25.3°C  
 Operators: DAMIN  
 Test Date: 2023-08-14

Range: 0 - 180DEG  
 Interval: 1.0DEG  
 Test System: EVERFINE GO-2000B\_V1 SYSTEM V2.00.471  
 Humidity: 65.0%  
 Test Distance: 4.880m [K=1.0000]  
 Remarks:

ZONAL FLUX DIAGRAM

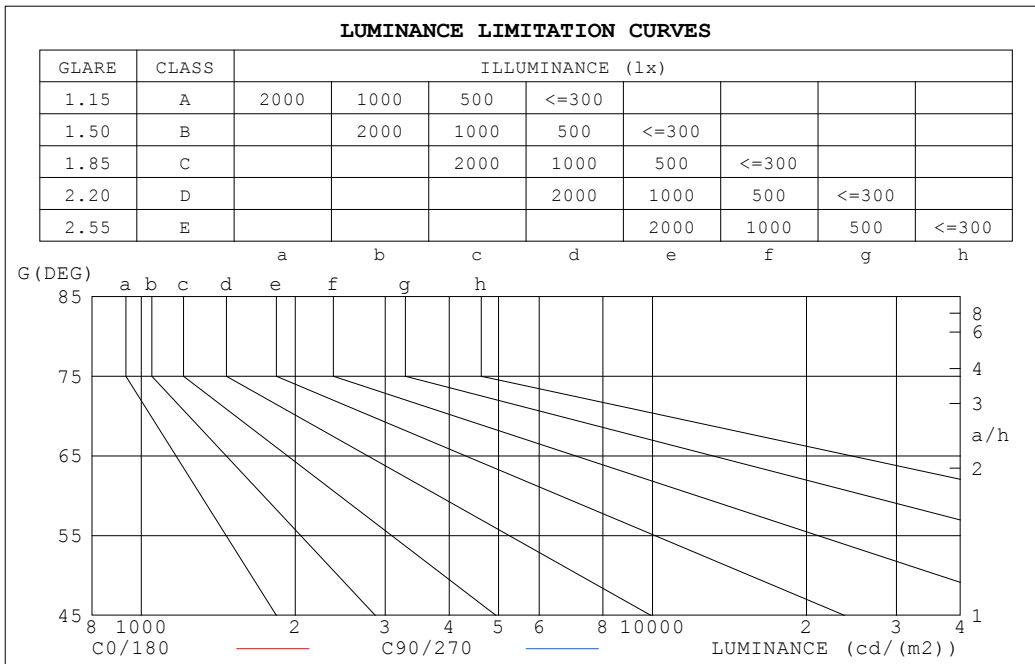
ZONAL FLUX DIAGRAM:

°	C0	C45	C90	C135	C180	C225	C270	C315	°	□ zone	□ total	%lum,lamp
10	519.2	511.4	499.0	497.6	507.9	501.6	496.7	502.3	0- 10	48.43	48.43	3.05,3.05
20	500.3	493.2	478.4	472.5	478.0	474.0	473.7	480.8	10- 20	139.5	187.9	11.8,11.8
30	465.6	459.8	443.7	432.9	433.0	431.7	437.0	443.8	20- 30	213.6	401.5	25.3,25.3
40	415.9	411.7	395.1	379.3	373.5	375.3	386.5	394.0	30- 40	261.7	663.2	41.8,41.8
50	352.3	348.8	332.4	312.2	300.7	306.3	322.1	328.8	40- 50	277.0	940.2	59.2,59.2
60	275.5	271.6	255.4	233.0	216.3	225.9	243.7	249.2	50- 60	256.1	1196	75.4,75.4
70	187.4	182.3	166.0	144.7	125.4	137.5	156.1	165.5	60- 70	200.5	1397	88,88
80	95.48	88.40	74.63	59.97	45.08	53.59	64.68	80.72	70- 80	118.8	1516	95.5,95.5
90	25.34	20.37	10.72	14.44	4.216	7.382	3.775	14.68	80- 90	39.99	1556	98,98
100	5.001	5.034	2.846	10.49	2.169	2.165	2.174	2.958	90-100	8.204	1564	98.5,98.5
110	2.087	3.664	2.525	3.006	2.660	2.713	2.813	2.736	100-110	4.262	1568	98.8,98.8
120	2.705	2.875	3.098	3.075	3.293	3.352	3.464	3.366	110-120	3.389	1571	99,99
130	3.339	3.482	3.694	3.705	3.905	3.967	4.070	4.587	120-130	3.198	1575	99.2,99.2
140	3.973	4.102	4.299	4.307	4.476	4.535	4.632	6.893	130-140	3.394	1578	99.4,99.4
150	4.600	4.710	8.534	4.870	4.998	5.047	5.210	9.362	140-150	3.339	1581	99.6,99.6
160	5.226	5.286	8.967	5.413	5.499	5.499	6.278	11.16	150-160	2.938	1584	99.8,99.8
170	5.765	5.757	9.129	5.946	5.918	5.871	7.373	12.20	160-170	1.979	1586	100,100
180	6.107	6.071	8.477	10.74	6.109	6.058	8.186	10.38	170-180	0.7029	1587	100,100
DEG	LUMINOUS INTENSITY:cd									UNIT:lm		

C Range: 0 - 360DEG  
 C Interval: 15.0DEG  
 Test Speed: HIGH  
 Temperature:25.3°C  
 Operators:DAMIN  
 Test Date:2023-08-14

□ Range: 0 - 180DEG  
 □ Interval: 1.0DEG  
 Test System:EVERFINE GO-2000B\_V1 SYSTEM V2.00.471  
 Humidity:65.0%  
 Test Distance:4.880m [K=1.0000]  
 Remarks:

**LUMINANCE LIMITATION CURVES**



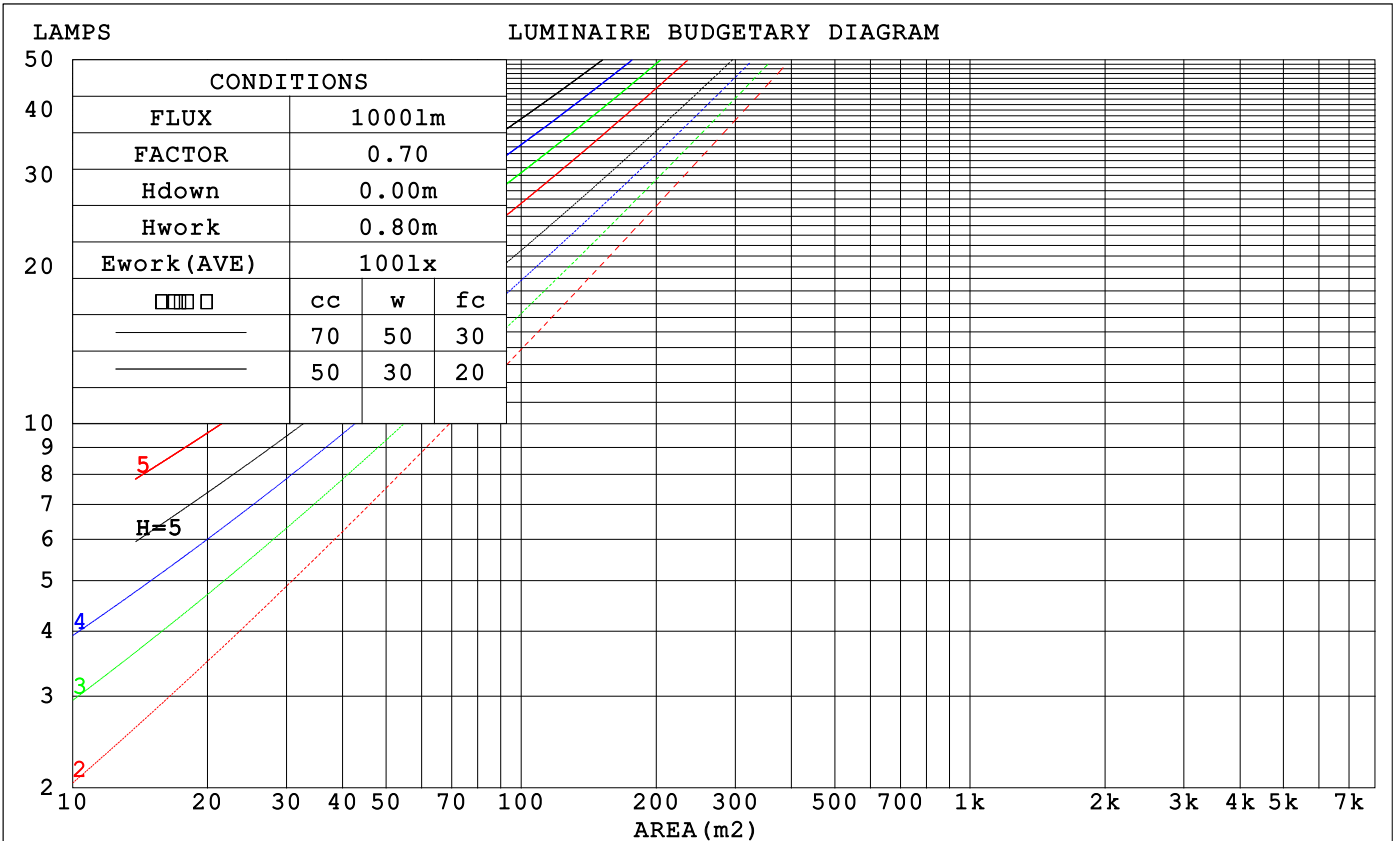
LUMINANCE cd/(m2)		
G (DEG)	C0/180	C90/270
85	78232	52363
80	68728	53725
75	68141	57733
70	68484	60657
65	68839	62755
60	68869	63854
55	68739	64408
50	68509	64638
45	68206	64624

C Range: 0 - 360DEG  
 C Interval: 15.0DEG  
 Test Speed: HIGH  
 Temperature: 25.3°C  
 Operators: DAMIN  
 Test Date: 2023-08-14

Range: 0 - 180DEG  
 Interval: 1.0DEG  
 Test System: EVERFINE GO-2000B\_V1 SYSTEM V2.00.471  
 Humidity: 65.0%  
 Test Distance: 4.880m [K=1.0000]  
 Remarks:

CU AND LUMINAIRE BUDGETARY ESTIMATE DIAGRAM

□cc	80%			70%			50%			30%			10%			0
□w	50%	30%	10%	50%	30%	10%	50%	30%	10%	50%	30%	10%	50%	30%	10%	0
□fc	20%			20%			20%			20%			20%			0
RCR	RCR:Room Cavity Ratio			Coefficients of Utilization(CU)												
0.0	1.19	1.19	1.19	1.16	1.16	1.16	1.10	1.10	1.10	1.05	1.05	1.05	1.00	1.00	1.00	.98
1.0	1.03	.98	.94	1.00	.96	.93	.96	.92	.89	.91	.89	.86	.87	.85	.83	.81
2.0	.89	.82	.76	.87	.81	.75	.83	.78	.73	.80	.75	.71	.76	.73	.69	.67
3.0	.78	.70	.63	.76	.69	.62	.73	.66	.61	.70	.64	.60	.67	.62	.58	.56
4.0	.69	.60	.53	.67	.59	.53	.65	.57	.52	.62	.56	.51	.60	.54	.50	.47
5.0	.61	.52	.45	.60	.52	.45	.58	.50	.44	.56	.49	.44	.54	.48	.43	.41
6.0	.55	.46	.40	.54	.46	.39	.52	.44	.39	.50	.43	.38	.48	.42	.38	.36
7.0	.50	.41	.35	.49	.41	.35	.47	.40	.34	.46	.39	.34	.44	.38	.33	.31
8.0	.45	.37	.31	.45	.36	.31	.43	.36	.30	.42	.35	.30	.40	.34	.30	.28
9.0	.42	.33	.28	.41	.33	.28	.40	.32	.27	.38	.32	.27	.37	.31	.27	.25
10.0	.38	.30	.25	.38	.30	.25	.37	.30	.25	.36	.29	.25	.35	.29	.24	.23



C Range: 0 - 360DEG  
 C Interval: 15.0DEG  
 Test Speed: HIGH  
 Temperature:25.3°C  
 Operators:DAMIN  
 Test Date:2023-08-14

□ Range: 0 - 180DEG  
 □ Interval: 1.0DEG  
 Test System:EVERFINE GO-2000B\_V1 SYSTEM V2.00.471  
 Humidity:65.0%  
 Test Distance:4.880m [K=1.0000]  
 Remarks:

**WEC AND CCEC**

□cc	80%			70%			50%			30%			10%			0
□w	50%	30%	10%	50%	30%	10%	50%	30%	10%	50%	30%	10%	50%	30%	10%	0
□fc	20%			20%			20%			20%			20%			0
RCR	RCR:Room Cavity Ratio						Wall Exitance Coefficients (WEC)									
0.0																
1.0	.321	.183	.058	.314	.179	.057	.299	.172	.055	.286	.165	.053	.274	.159	.051	
2.0	.299	.164	.050	.292	.161	.050	.280	.155	.048	.268	.150	.047	.257	.145	.046	
3.0	.275	.147	.044	.269	.144	.043	.258	.140	.042	.248	.136	.042	.238	.132	.041	
4.0	.253	.132	.039	.248	.130	.038	.238	.126	.038	.228	.123	.037	.220	.119	.036	
5.0	.234	.119	.034	.229	.117	.034	.220	.114	.034	.211	.112	.033	.203	.109	.033	
6.0	.216	.108	.031	.212	.107	.031	.204	.104	.030	.196	.102	.030	.189	.100	.030	
7.0	.201	.099	.028	.197	.098	.028	.190	.096	.028	.183	.094	.027	.177	.092	.027	
8.0	.187	.092	.026	.184	.091	.026	.177	.089	.025	.171	.087	.025	.166	.085	.025	
9.0	.175	.085	.024	.172	.084	.024	.166	.082	.023	.161	.081	.023	.156	.079	.023	
10.0	.165	.079	.022	.162	.078	.022	.157	.077	.022	.152	.075	.021	.147	.074	.021	

□cc	80%			70%			50%			30%			10%			0
□w	50%	30%	10%	50%	30%	10%	50%	30%	10%	50%	30%	10%	50%	30%	10%	0
□fc	20%			20%			20%			20%			20%			0
RCR	RCR:Room Cavity Ratio						Ceiling Cavity Exitance Coefficients (CCEC)									
0.0	.206	.206	.206	.176	.176	.176	.120	.120	.120	.069	.069	.069	.022	.022	.022	
1.0	.196	.171	.149	.168	.147	.128	.115	.101	.088	.066	.059	.051	.021	.019	.017	
2.0	.189	.147	.112	.161	.127	.097	.111	.088	.068	.064	.051	.040	.020	.016	.013	
3.0	.181	.130	.089	.155	.112	.077	.106	.078	.054	.062	.045	.032	.020	.015	.010	
4.0	.173	.117	.073	.149	.101	.064	.102	.070	.045	.059	.041	.026	.019	.013	.009	
5.0	.166	.106	.062	.142	.092	.054	.098	.064	.038	.057	.038	.023	.018	.012	.007	
6.0	.159	.098	.054	.136	.085	.047	.094	.059	.033	.055	.035	.020	.018	.011	.007	
7.0	.152	.091	.049	.131	.079	.042	.090	.055	.030	.052	.033	.018	.017	.011	.006	
8.0	.145	.085	.044	.125	.074	.038	.087	.052	.027	.050	.031	.016	.016	.010	.005	
9.0	.139	.080	.041	.120	.070	.035	.083	.049	.025	.048	.029	.015	.016	.010	.005	
10.0	.133	.076	.038	.115	.066	.033	.080	.046	.024	.047	.027	.014	.015	.009	.005	

C Range: 0 - 360DEG  
 C Interval: 15.0DEG  
 Test Speed: HIGH  
 Temperature: 25.3°C  
 Operators: DAMIN  
 Test Date: 2023-08-14

□ Range: 0 - 180DEG  
 □ Interval: 1.0DEG  
 Test System: EVERFINE GO-2000B\_V1 SYSTEM V2.00.471  
 Humidity: 65.0%  
 Test Distance: 4.880m [K=1.0000]  
 Remarks:

**UGR(Unified Glare Rating) Table**

ceiling/cavity	0.7	0.7	0.5	0.5	0.3	0.7	0.7	0.5	0.5	0.3
walls	0.5	0.3	0.5	0.3	0.3	0.5	0.3	0.5	0.3	0.3
working plane	0.2	0.2	0.2	0.2	0.2	0.2	0.2	0.2	0.2	0.2
Room dimensions	Viewed crosswise					Viewed endwise				
x = 2H y = 2H	26.3	27.8	26.6	28.0	28.3	26.0	27.5	26.3	27.8	28.0
3H	28.0	29.4	28.4	29.7	30.0	27.7	29.1	28.0	29.4	29.7
4H	28.8	30.2	29.2	30.4	30.7	28.4	29.7	28.7	30.0	30.3
6H	29.5	30.7	29.8	31.0	31.4	28.9	30.1	29.3	30.5	30.8
8H	29.7	30.9	30.1	31.3	31.6	29.1	30.3	29.4	30.6	30.9
12H	30.0	31.1	30.3	31.5	31.8	29.2	30.4	29.6	30.7	31.0
4H 2H	26.9	28.3	27.3	28.5	28.8	26.7	28.1	27.1	28.4	28.7
3H	28.9	30.1	29.3	30.4	30.7	28.6	29.8	29.0	30.1	30.5
4H	29.8	30.9	30.2	31.2	31.6	29.4	30.5	29.8	30.9	31.2
6H	30.6	31.5	31.0	31.9	32.3	30.1	31.0	30.5	31.4	31.8
8H	30.9	31.8	31.4	32.2	32.6	30.3	31.2	30.8	31.6	32.1
12H	31.2	32.0	31.7	32.5	32.9	30.5	31.3	31.0	31.8	32.2
8H 4H	30.1	31.0	30.6	31.4	31.8	29.8	30.7	30.2	31.1	31.5
6H	31.1	31.8	31.6	32.3	32.7	30.6	31.4	31.1	31.8	32.3
8H	31.5	32.2	32.0	32.6	33.1	31.0	31.7	31.5	32.1	32.6
12H	32.0	32.5	32.5	33.0	33.5	31.3	31.9	31.8	32.3	32.9
12H 4H	30.1	31.0	30.6	31.4	31.8	29.8	30.7	30.3	31.1	31.5
6H	31.2	31.8	31.7	32.3	32.8	30.8	31.4	31.2	31.9	32.4
8H	31.7	32.2	32.2	32.7	33.2	31.2	31.7	31.7	32.2	32.7
Variations with the observer position at spacings(CIE Pub.117):										
S = 1.0H	+ 0.1 / - 0.2					+ 0.1 / - 0.2				
1.5H	+ 0.2 / - 0.3					+ 0.2 / - 0.3				
2.0H	+ 0.1 / - 0.3					+ 0.2 / - 0.4				

CIE Pub.117, 1587 lm Total Lamp Luminous Flux Correct (8log(F/F0) = 1.6)  
 Area: 0.008 m2

C Range: 0 - 360DEG  
 C Interval: 15.0DEG  
 Test Speed: HIGH  
 Temperature:25.3°C  
 Operators:DAMIN  
 Test Date:2023-08-14

Range: 0 - 180DEG  
 Interval: 1.0DEG  
 Test System:EVERFINE GO-2000B\_V1 SYSTEM V2.00.471  
 Humidity:65.0%  
 Test Distance:4.880m [K=1.0000]  
 Remarks:

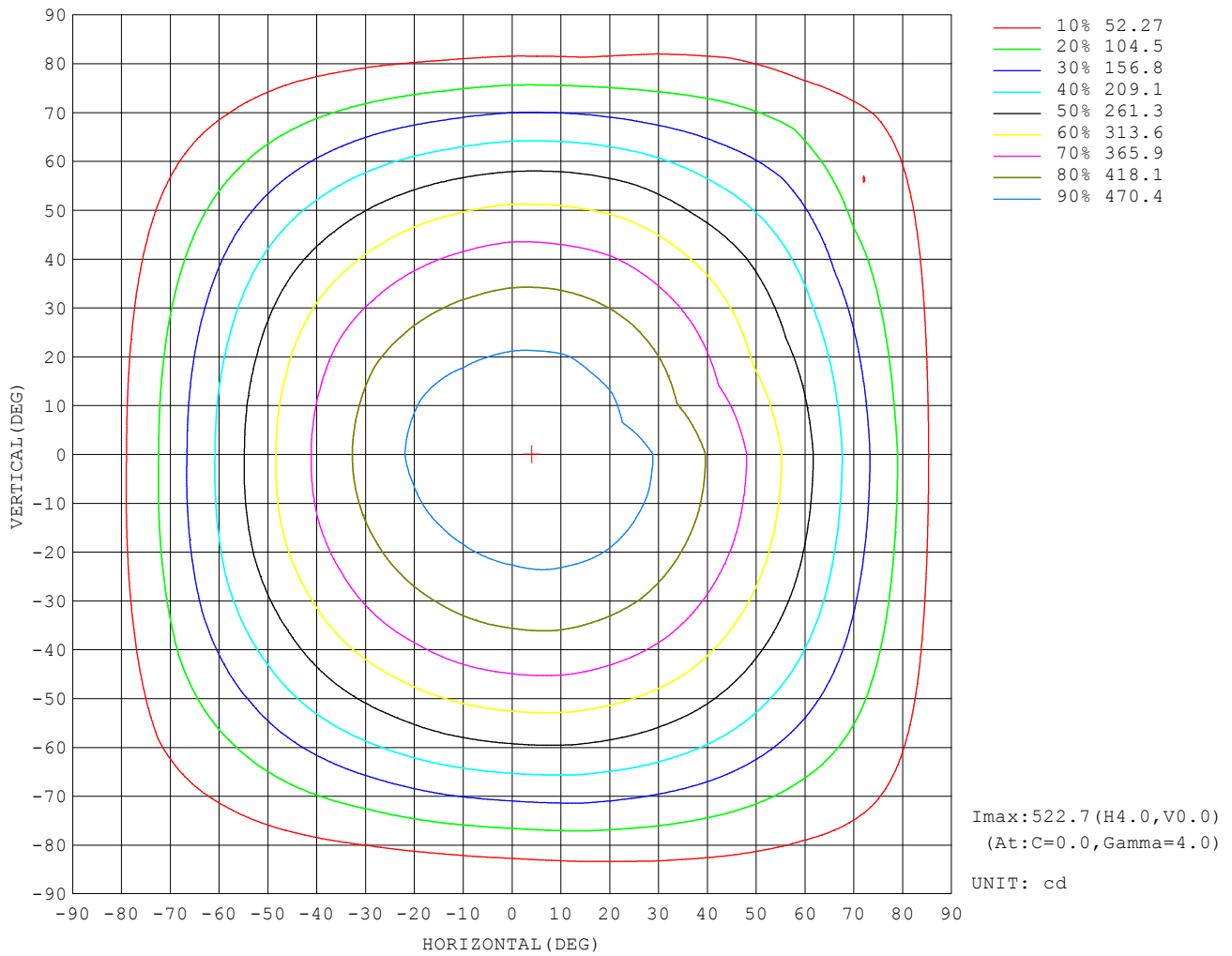
**UTILIZATION FACTORS TABLE**

REFLECTANCE										
Ceiling	0.8	0.8	0.8	0.7	0.7	0.7	0.5	0.5	0.5	0
Walls	0.7	0.5	0.3	0.7	0.5	0.3	0.7	0.5	0.3	0
Working plane	0.2	0.2	0.2	0.2	0.2	0.2	0.2	0.2	0.2	0
ROOM INDEX	UTILIZATION FACTORS (PERCENT) $k(RI) \times RCR = 5$									
$k = 0.60$	56	44	37	55	44	37	54	43	37	30
0.80	66	54	46	65	53	46	63	53	46	39
1.00	74	63	55	73	62	55	70	63	54	47
1.25	81	71	63	80	70	63	77	68	62	54
1.50	86	76	69	85	75	68	81	73	67	59
2.00	93	85	78	91	83	77	88	81	75	67
2.50	97	89	83	95	88	82	91	85	80	71
3.00	101	94	88	99	92	87	94	89	84	75
4.00	105	99	94	102	97	93	98	93	90	80
5.00	108	102	98	105	100	96	100	96	93	83
ROOM INDEX	UF(total)									Direct
According to DIN EN 13032-2 2004			Suspended				SHRNOM = 1.25			

C Range: 0 - 360DEG  
 C Interval: 15.0DEG  
 Test Speed: HIGH  
 Temperature: 25.3°C  
 Operators: DAMIN  
 Test Date: 2023-08-14

Range: 0 - 180DEG  
 Interval: 1.0DEG  
 Test System: EVERFINE GO-2000B\_V1 SYSTEM V2.00.471  
 Humidity: 65.0%  
 Test Distance: 4.880m [K=1.0000]  
 Remarks:

**ISOCANDELA DIAGRAM**

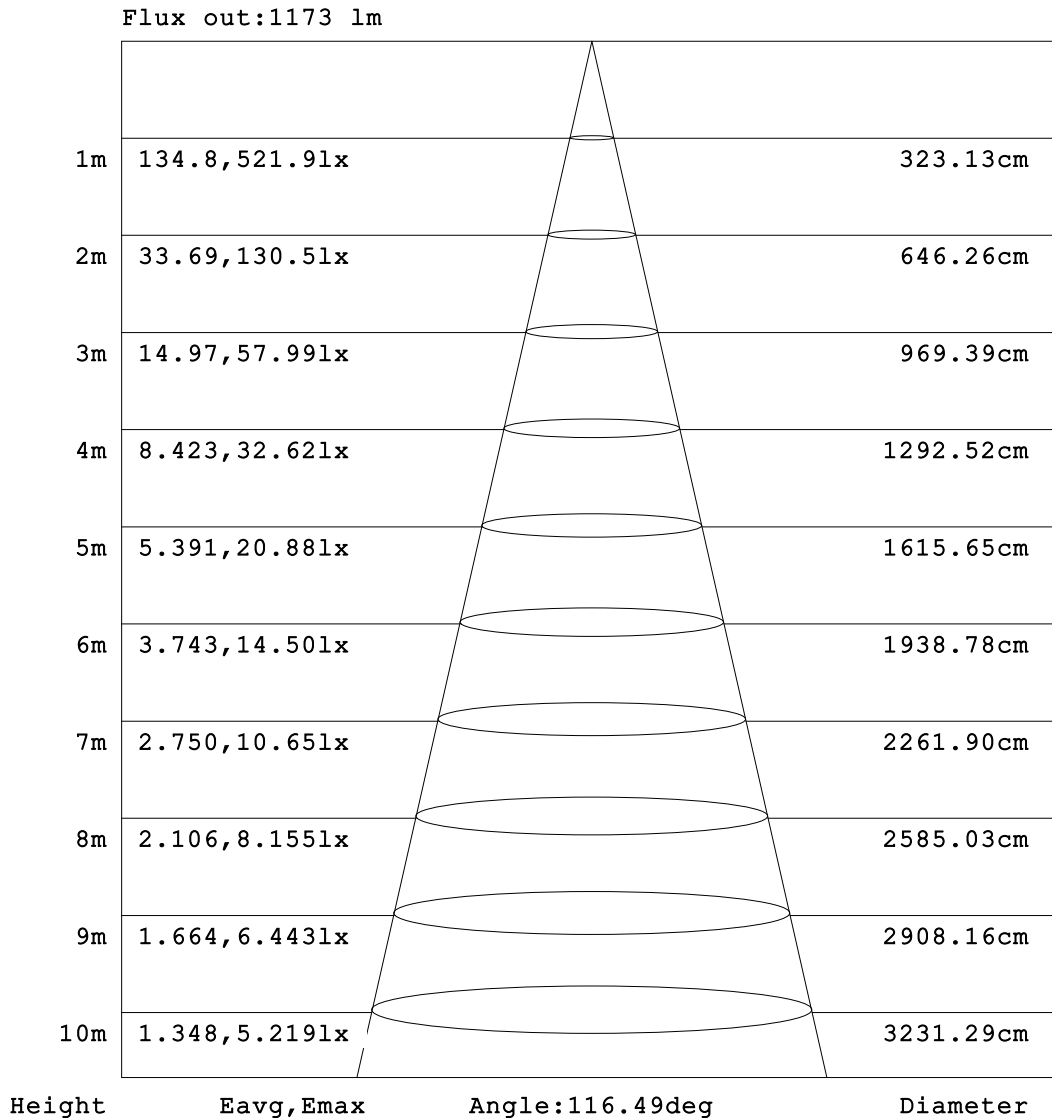


C Range: 0 - 360DEG  
 C Interval: 15.0DEG  
 Test Speed: HIGH  
 Temperature: 25.3°C  
 Operators: DAMIN  
 Test Date: 2023-08-14

Range: 0 - 180DEG  
 Interval: 1.0DEG  
 Test System: EVERFINE GO-2000B\_V1 SYSTEM V2.00.471  
 Humidity: 65.0%  
 Test Distance: 4.880m [K=1.0000]  
 Remarks:



**AAI Figure**

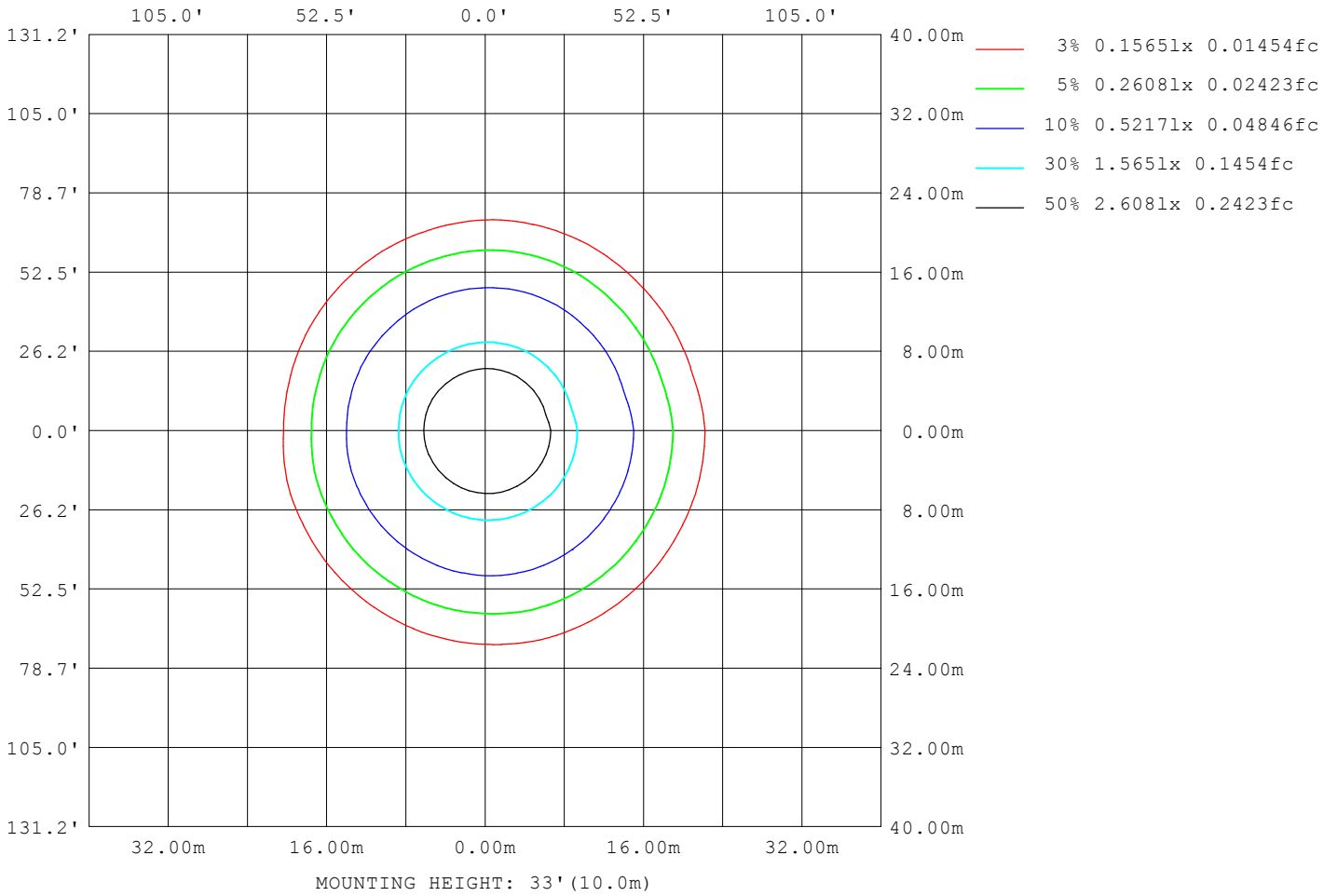


**Note:**The Curves indicate the illuminated area and the average illumination when the luminaire is at different distance.

C Range: 0 - 360DEG  
 C Interval: 15.0DEG  
 Test Speed: HIGH  
 Temperature:25.3°C  
 Operators:DAMIN  
 Test Date:2023-08-14

Range: 0 - 180DEG  
 Interval: 1.0DEG  
 Test System:EVERFINE GO-2000B\_V1 SYSTEM V2.00.471  
 Humidity:65.0%  
 Test Distance:4.880m [K=1.0000]  
 Remarks:

**ISOLUX DIAGRAM**



C Range: 0 - 360DEG  
 C Interval: 15.0DEG  
 Test Speed: HIGH  
 Temperature: 25.3°C  
 Operators: DAMIN  
 Test Date: 2023-08-14

Range: 0 - 180DEG  
 Interval: 1.0DEG  
 Test System: EVERFINE GO-2000B\_V1 SYSTEM V2.00.471  
 Humidity: 65.0%  
 Test Distance: 4.880m [K=1.0000]  
 Remarks:

LED Avg.L Report

NAME: LED Strip	TYPE: Indoor lighting	WEIGHT: 20g
SPEC.: 2835 128LED	DIM.: 1000*8*1.2MM	SERIAL No.: 20230808010
MFR.: EVERFINE	SUR.: 1000*8MM	Shielding Angle:

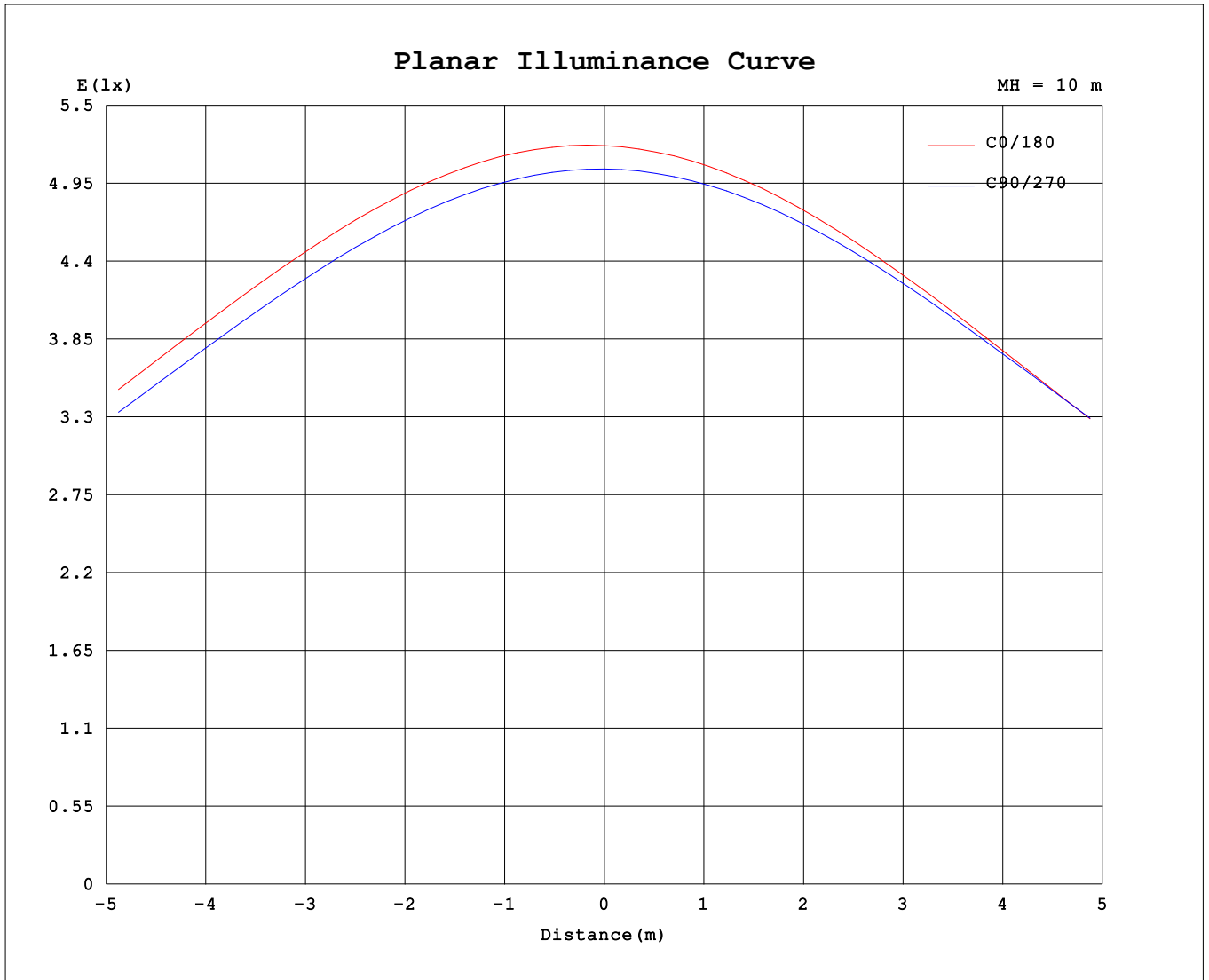
AvgL	cd/m2
L_0~180 (65) av	59718
L_0~180 (75) av	54012
L_0~180 (85) av	51686
L_90~270 (65) av	61125
L_90~270 (75) av	55370
L_90~270 (85) av	45460
L_45 (65) av	59698
L_45 (75) av	54527
L_45 (85) av	51222

Standard: GB/T 29293-2012

C Range: 0 - 360DEG  
 C Interval: 15.0DEG  
 Test Speed: HIGH  
 Temperature:25.3°C  
 Operators:DAMIN  
 Test Date:2023-08-14

Range: 0 - 180DEG  
 Interval: 1.0DEG  
 Test System:EVERFINE GO-2000B\_V1 SYSTEM V2.00.471  
 Humidity:65.0%  
 Test Distance:4.880m [K=1.0000]  
 Remarks:

**Planar Illuminance Curve**



C Range: 0 - 360DEG  
 C Interval: 15.0DEG  
 Test Speed: HIGH  
 Temperature: 25.3°C  
 Operators: DAMIN  
 Test Date: 2023-08-14

Range: 0 - 180DEG  
 Interval: 1.0DEG  
 Test System: EVERFINE GO-2000B\_V1 SYSTEM V2.00.471  
 Humidity: 65.0%  
 Test Distance: 4.880m [K=1.0000]  
 Remarks:

LUMINOUS DISTRIBUTION INTENSITY DATA

Table--1

UNIT: cd

C (DEG) □ (DEG)	0	15	30	45	60	75	90	105	120	135	150	165	180	195	210	225	240	255	270
0	522	521	518	514	509	506	505	504	506	507	511	512	522	521	518	514	509	506	505
5	523	522	518	515	509	506	504	503	503	504	507	509	517	516	513	510	505	503	503
10	519	519	515	511	505	502	499	497	497	498	500	502	508	507	505	502	497	496	497
15	512	511	508	504	498	494	491	488	487	487	489	490	495	494	493	490	486	486	487
20	500	500	497	493	487	483	478	475	473	472	473	474	478	477	477	474	471	472	474
25	485	485	482	478	473	468	463	459	456	454	454	455	457	456	457	455	453	454	457
30	466	466	463	460	454	450	444	439	435	433	432	432	433	432	434	432	431	433	437
35	443	443	440	438	432	428	421	416	411	408	406	406	405	405	407	405	406	409	413
40	416	416	414	412	407	403	395	389	383	379	376	376	373	374	376	375	377	381	386
45	386	386	384	382	378	373	366	359	351	347	343	342	339	339	342	342	345	350	356
50	352	353	350	349	345	341	332	325	317	312	307	306	301	302	306	306	310	315	322
55	315	315	313	312	308	304	296	288	279	274	268	266	260	261	265	267	272	278	284
60	275	275	272	272	268	264	255	248	239	233	226	225	216	218	223	226	231	237	244
65	233	232	229	228	225	221	212	204	196	189	183	181	171	173	178	182	188	193	201
70	187	187	183	182	179	176	166	159	150	145	139	138	125	127	132	137	143	148	156
75	141	140	136	135	132	129	120	113	105	101	95.9	95.3	82.6	83.9	87.4	93.6	98.7	103	110
80	95.5	93.6	89.5	88.4	86.2	82.4	74.6	68.3	62.7	60.0	57.8	57.8	45.1	46.4	48.4	53.6	56.7	59.7	64.7
85	54.5	52.6	48.6	47.9	46.2	42.3	36.5	32.5	29.8	29.7	29.2	30.7	17.5	18.2	19.9	23.4	24.2	24.2	26.9
90	25.3	23.8	20.3	20.4	20.2	17.3	10.7	13.4	13.6	14.4	15.2	16.7	4.22	4.41	5.13	7.38	7.09	5.52	3.78
95	11.4	10.2	7.61	8.81	11.9	10.9	2.02	8.09	10.5	11.1	11.8	13.0	2.22	2.37	2.45	3.04	2.58	2.22	2.08
100	5.00	4.16	2.66	5.03	5.37	3.25	2.85	1.94	9.16	10.5	10.8	11.9	2.17	2.15	2.18	2.17	2.18	2.21	2.17
105	2.22	2.03	1.92	4.09	8.30	4.50	2.19	2.16	2.36	10.4	11.3	11.8	2.36	2.35	2.36	2.39	2.46	2.49	2.47
110	2.09	2.12	2.18	3.66	8.06	9.17	2.52	2.48	2.46	3.01	11.2	12.5	2.66	2.65	2.67	2.71	2.79	2.83	2.81
115	2.39	2.42	2.49	3.62	2.68	2.75	2.80	2.79	2.78	2.80	3.89	11.6	2.98	2.97	2.99	3.03	3.12	3.16	3.15
120	2.70	2.73	2.80	2.88	2.94	3.05	3.10	3.12	3.09	3.08	3.26	4.84	3.29	3.29	3.31	3.35	3.44	3.49	3.46
125	3.02	3.04	3.11	3.17	3.23	3.33	3.39	3.44	3.41	3.39	3.38	3.62	3.60	3.60	3.63	3.66	3.75	3.80	3.77
130	3.34	3.36	3.42	3.48	3.53	3.61	3.69	3.76	3.72	3.71	3.70	3.61	3.90	3.91	3.93	3.97	4.05	4.11	4.07
135	3.66	3.69	3.74	3.79	3.84	3.91	3.99	4.08	4.03	4.01	4.01	3.96	4.19	4.20	4.23	4.26	4.34	4.40	4.36
140	3.97	4.02	4.05	4.10	4.14	4.21	4.30	4.38	4.33	4.31	4.31	4.34	4.48	4.48	4.51	4.53	4.61	4.67	4.63
145	4.28	4.34	4.37	4.41	4.43	4.52	4.59	4.67	4.62	4.59	4.59	4.68	4.75	4.75	4.77	4.80	4.87	4.92	4.89
150	4.60	4.66	4.69	4.71	4.81	7.64	8.53	4.98	4.92	4.87	4.86	4.99	5.00	5.01	5.03	5.05	5.11	5.16	5.21
155	4.92	4.96	4.98	4.99	5.13	7.63	8.87	5.33	5.20	5.14	5.11	5.25	5.25	5.25	5.26	5.28	5.33	5.37	5.70
160	5.23	5.24	5.25	5.29	5.33	6.63	8.97	8.47	5.44	5.41	5.37	5.49	5.50	5.47	5.49	5.50	5.54	5.57	6.28
165	5.52	5.51	5.51	5.53	5.56	6.04	9.29	9.10	5.74	5.67	5.63	5.72	5.73	5.68	5.70	5.70	5.74	5.75	6.84
170	5.77	5.75	5.74	5.76	5.77	5.97	9.13	9.49	9.47	5.95	5.89	5.95	5.92	5.86	5.88	5.87	5.91	5.90	7.37
175	5.97	5.95	5.93	5.94	5.94	6.03	8.86	9.56	9.72	9.86	6.27	6.26	6.05	6.00	6.01	6.00	6.03	6.04	7.84
180	6.11	6.08	6.05	6.07	6.06	6.08	8.48	10.1	11.2	10.7	9.72	6.58	6.11	6.07	6.06	6.06	6.08	6.30	8.19

C Range: 0 - 360DEG  
 C Interval: 15.0DEG  
 Test Speed: HIGH  
 Temperature:25.3°C  
 Operators:DAMIN  
 Test Date:2023-08-14

□ Range: 0 - 180DEG  
 □ Interval: 1.0DEG  
 Test System:EVERFINE GO-2000B\_V1 SYSTEM V2.00.471  
 Humidity:65.0%  
 Test Distance:4.880m [K=1.0000]  
 Remarks:

LUMINOUS DISTRIBUTION INTENSITY DATA

Table--2

UNIT: cd

C (DEG) \ □ (DEG)	285	300	315	330	345														
0	504	506	507	511	512														
5	503	505	507	510	510														
10	497	500	502	505	505														
15	488	492	494	495	496														
20	476	480	481	482	482														
25	460	464	464	466	465														
30	440	444	444	446	443														
35	417	419	421	421	419														
40	390	393	394	394	391														
45	358	363	362	362	361														
50	325	330	329	329	328														
55	289	292	290	291	290														
60	249	252	249	255	257														
65	205	208	208	212	216														
70	159	161	166	173	169														
75	113	115	122	128	117														
80	65.7	74.5	80.7	83.8	51.5														
85	28.3	38.6	41.8	36.9	49.5														
90	7.55	11.1	14.7	20.5	21.1														
95	2.30	3.91	6.21	8.67	9.64														
100	2.14	2.23	2.96	3.83	4.36														
105	2.41	2.41	2.53	2.68	2.81														
110	2.74	2.69	2.74	2.80	2.87														
115	3.05	3.00	3.04	3.03	3.18														
120	3.36	3.31	3.37	3.38	3.83														
125	3.65	3.62	3.82	4.05	4.87														
130	3.96	3.93	4.59	5.24	6.32														
135	4.26	4.40	5.67	6.61	7.87														
140	4.61	5.27	6.89	7.77	8.98														
145	5.24	6.34	8.14	9.00	9.46														
150	5.91	7.45	9.36	10.4	10.5														
155	6.52	8.48	10.4	11.0	11.4														
160	7.13	9.18	11.2	11.7	11.8														
165	7.71	9.21	11.7	12.6	10.2														
170	8.24	9.37	12.2	11.5	9.90														
175	9.92	10.1	10.2	9.90	7.30														
180	9.54	10.6	10.4	9.89	6.56														

C Range: 0 - 360DEG  
 C Interval: 15.0DEG  
 Test Speed: HIGH  
 Temperature:25.3°C  
 Operators:DAMIN  
 Test Date:2023-08-14

□ Range: 0 - 180DEG  
 □ Interval: 1.0DEG  
 Test System:EVERFINE GO-2000B\_V1 SYSTEM V2.00.471  
 Humidity:65.0%  
 Test Distance:4.880m [K=1.0000]  
 Remarks: