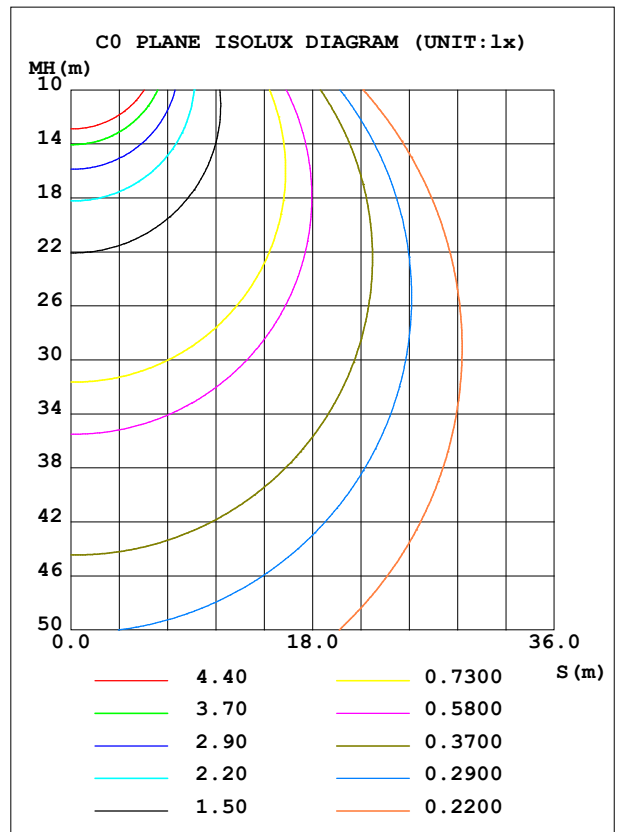
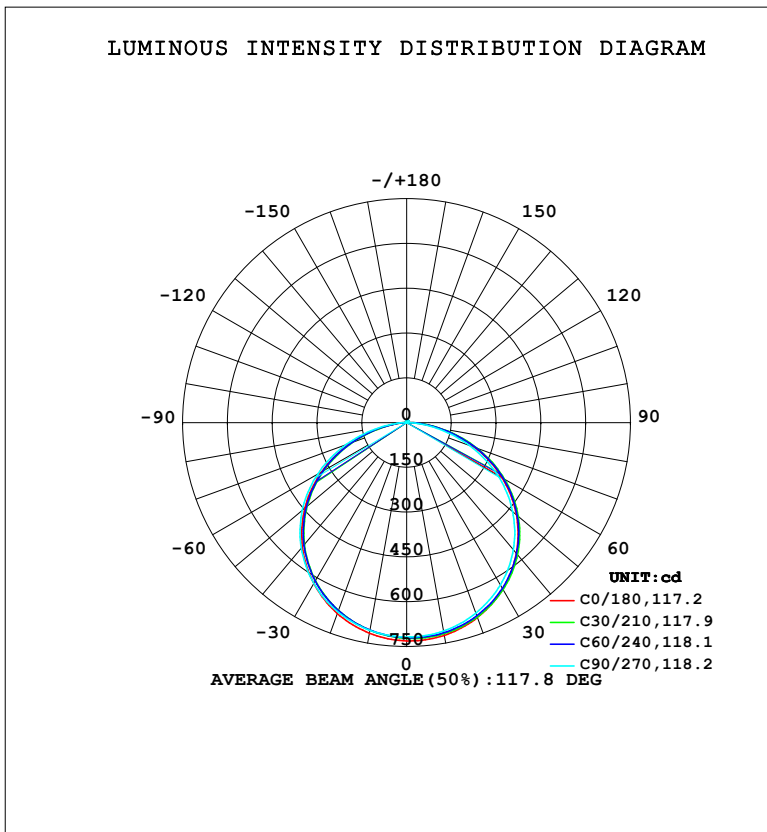


**LUMINAIRE PHOTOMETRIC TEST REPORT**

NAME: LED Strip	TYPE: Indoor lighting	WEIGHT: 20g
SPEC.: 2835 238LED	DIM.: 500*12*1.2MM	SERIAL No.: 20231123011
MFR.: EVERFINE	SUR.: 500*12MM	Shielding Angle:

DATA OF LAMP		PHOTOMETRIC DATA			
NO. 2835-24 (WCP) -HR-M-CV-ME-EP		Imax (cd)	732.5	S/MH (C0/180)	1.27
NOMINAL POWER (W)	15.3608	LOR (%)	100.0	S/MH (C90/270)	1.29
RATED VOLTAGE (V)	DC 24V	TOTAL FLUX (lm)	2214.8	$\eta$ UP, DN (C0-180)	0.7, 49.7
NOMINAL FLUX (lm)	2214.83	CIE CLASS	DIRECT	$\eta$ UP, DN (C180-360)	0.7, 49.0
LAMPS INSIDE	1	$\eta$ up (%)	1.4	CIBSE SHR NOM	1.25
TEST VOLTAGE (V)	DC 24V	$\eta$ down (%)	98.6	CIBSE SHR MAX	1.35



C Range: 0 - 360DEG  
 C Interval: 15.0DEG  
 Test Speed: HIGH  
 Temperature: 25.3°C  
 Operators: DAMIN  
 Test Date: 2023-11-24

$\gamma$  Range: 0 - 180DEG  
 $\gamma$  Interval: 1.0DEG  
 Test System: EVERFINE GO-2000B\_V1 SYSTEM V2.00.471  
 Humidity: 65.0%  
 Test Distance: 4.880m [K=1.0000]  
 Remarks:

ZONAL FLUX DIAGRAM

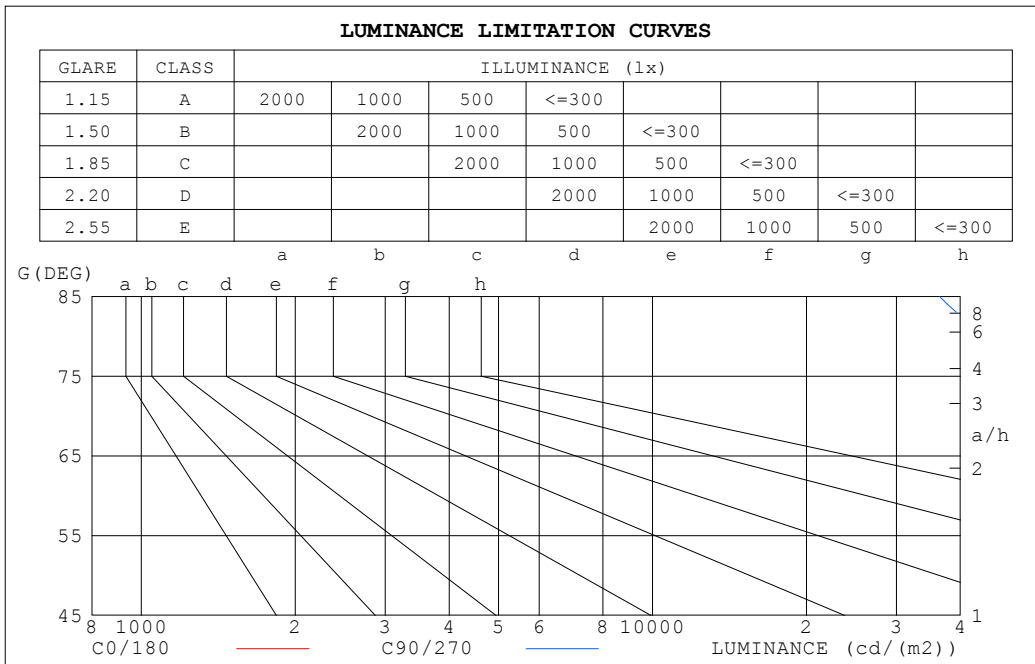
ZONAL FLUX DIAGRAM:

$\gamma$	C0	C45	C90	C135	C180	C225	C270	C315	$\gamma$	$\Phi$ zone	$\Phi$ total	%lum,lamp
10	723.6	716.4	708.8	705.9	716.3	704.1	706.6	715.7	0- 10	68.51	68.51	3.09,3.09
20	694.3	691.0	678.7	669.6	680.0	666.6	674.5	689.4	10- 20	197.5	266.0	12,12
30	643.7	644.7	627.9	612.9	622.1	608.8	621.9	642.3	20- 30	303.0	569.0	25.7,25.7
40	571.9	577.1	556.1	535.1	543.5	530.8	549.0	574.1	30- 40	371.8	940.8	42.5,42.5
50	479.9	488.6	463.8	437.4	445.0	433.4	456.2	485.2	40- 50	393.7	1335	60.3,60.3
60	369.0	378.9	351.9	320.3	328.4	318.0	343.9	376.4	50- 60	363.4	1698	76.7,76.7
70	241.7	252.3	223.5	191.1	198.4	189.2	215.6	250.0	60- 70	282.1	1980	89.4,89.4
80	109.2	117.6	92.08	64.35	70.49	64.04	85.53	113.8	70- 80	161.2	2141	96.7,96.7
90	10.44	15.27	3.088	3.741	2.899	3.388	3.895	10.11	80- 90	43.43	2185	98.6,98.6
100	2.339	2.413	2.496	2.647	2.680	2.792	2.686	2.482	90-100	3.722	2189	98.8,98.8
110	3.105	3.092	3.382	3.520	3.595	3.715	3.623	3.288	100-110	3.184	2192	99,99
120	4.005	4.007	4.326	4.417	4.498	4.629	4.582	4.213	110-120	3.861	2196	99.1,99.1
130	4.886	4.909	5.236	5.316	5.376	5.515	5.480	5.115	120-130	4.302	2200	99.3,99.3
140	5.776	5.833	6.122	6.200	6.209	6.344	6.320	6.010	130-140	4.407	2204	99.5,99.5
150	6.648	6.719	6.933	7.017	6.978	7.100	7.083	6.857	140-150	4.107	2208	99.7,99.7
160	7.512	7.501	7.650	7.740	7.723	7.759	7.736	7.606	150-160	3.387	2212	99.9,99.9
170	8.260	8.178	8.239	8.336	8.366	8.313	8.292	8.258	160-170	2.268	2214	100,100
180	8.693	8.607	8.611	8.653	8.697	8.609	8.610	8.669	170-180	0.8106	2215	100,100
DEG	LUMINOUS INTENSITY:cd									UNIT:lm		

C Range: 0 - 360DEG  
 C Interval: 15.0DEG  
 Test Speed: HIGH  
 Temperature:25.3°C  
 Operators:DAMIN  
 Test Date:2023-11-24

$\gamma$  Range: 0 - 180DEG  
 $\gamma$  Interval: 1.0DEG  
 Test System:EVERFINE GO-2000B\_V1 SYSTEM V2.00.471  
 Humidity:65.0%  
 Test Distance:4.880m [K=1.0000]  
 Remarks:

**LUMINANCE LIMITATION CURVES**



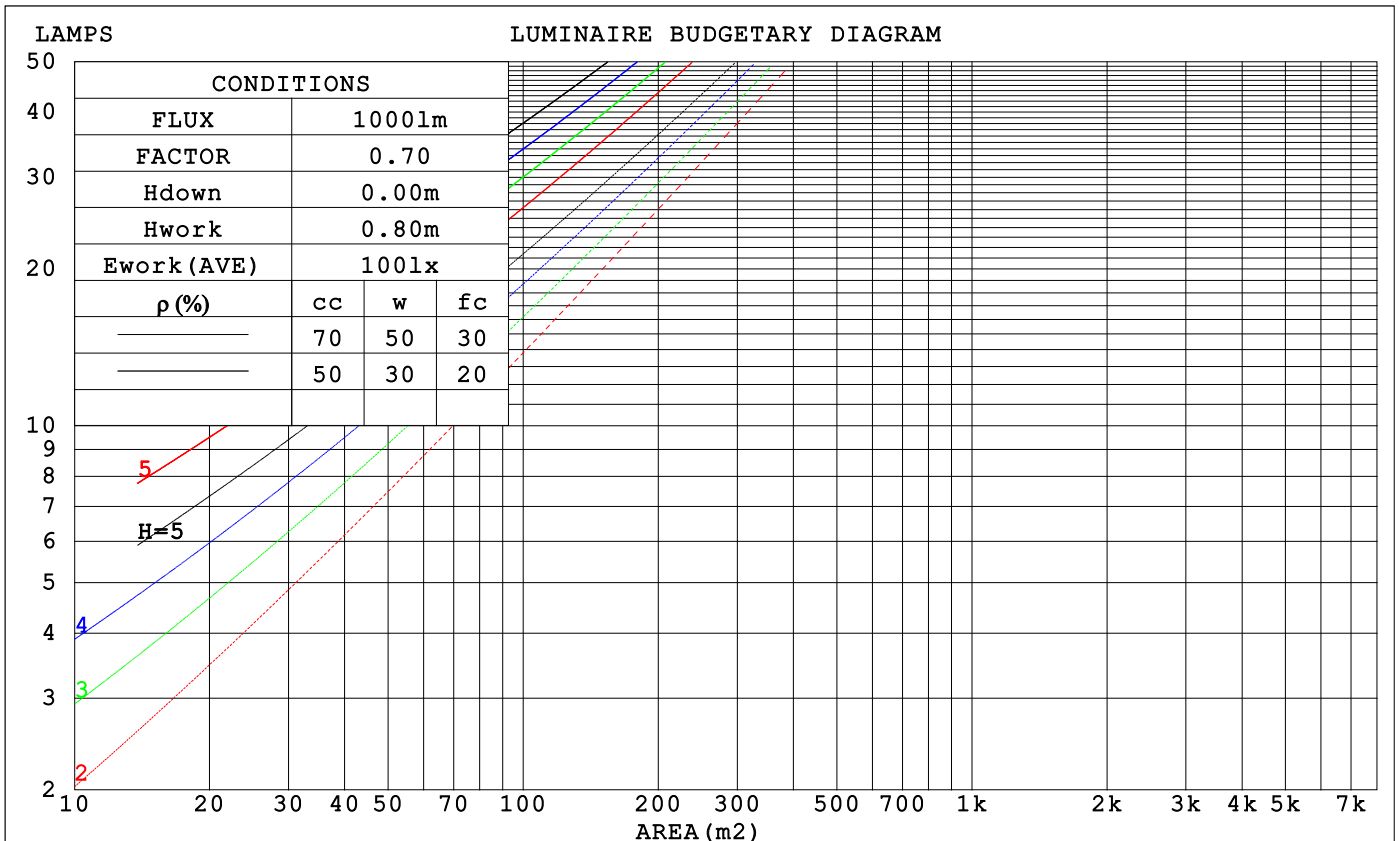
LUMINANCE cd/(m2)		
G (DEG)	C0/180	C90/270
85	48190	36457
80	52395	44188
75	56310	50468
70	58882	54465
65	60535	57087
60	61494	58656
55	62005	59597
50	62222	60124
45	62263	60392

C Range: 0 - 360DEG  
 C Interval: 15.0DEG  
 Test Speed: HIGH  
 Temperature: 25.3°C  
 Operators: DAMIN  
 Test Date: 2023-11-24

γ Range: 0 - 180DEG  
 γ Interval: 1.0DEG  
 Test System: EVERFINE GO-2000B\_V1 SYSTEM V2.00.471  
 Humidity: 65.0%  
 Test Distance: 4.880m [K=1.0000]  
 Remarks:

**CU AND LUMINAIRE BUDGETARY ESTIMATE DIAGRAM**

$\rho_{cc}$	80%			70%			50%			30%			10%			0
$\rho_w$	50%	30%	10%	50%	30%	10%	50%	30%	10%	50%	30%	10%	50%	30%	10%	0
$\rho_{fc}$	20%			20%			20%			20%			20%			0
RCR	RCR:Room Cavity Ratio			Coefficients of Utilization(CU)												
0.0	1.19	1.19	1.19	1.16	1.16	1.16	1.10	1.10	1.10	1.05	1.05	1.05	1.01	1.01	1.01	.99
1.0	1.03	.99	.95	1.01	.97	.93	.96	.93	.90	.92	.90	.87	.88	.86	.84	.82
2.0	.90	.83	.77	.88	.81	.76	.84	.79	.74	.80	.76	.72	.77	.73	.70	.68
3.0	.79	.70	.64	.77	.69	.63	.74	.67	.62	.71	.65	.60	.68	.63	.59	.57
4.0	.69	.60	.54	.68	.60	.53	.65	.58	.52	.63	.56	.51	.60	.55	.51	.48
5.0	.62	.53	.46	.61	.52	.46	.58	.51	.45	.56	.50	.44	.54	.48	.44	.42
6.0	.56	.46	.40	.54	.46	.40	.53	.45	.39	.51	.44	.39	.49	.43	.38	.36
7.0	.50	.41	.35	.49	.41	.35	.48	.40	.35	.46	.39	.34	.45	.39	.34	.32
8.0	.46	.37	.31	.45	.37	.31	.44	.36	.31	.42	.35	.31	.41	.35	.30	.28
9.0	.42	.34	.28	.41	.33	.28	.40	.33	.28	.39	.32	.27	.38	.32	.27	.25
10.0	.39	.31	.25	.38	.30	.25	.37	.30	.25	.36	.29	.25	.35	.29	.25	.23



C Range: 0 - 360DEG  
 C Interval: 15.0DEG  
 Test Speed: HIGH  
 Temperature:25.3°C  
 Operators:DAMIN  
 Test Date:2023-11-24

$\gamma$  Range: 0 - 180DEG  
 $\gamma$  Interval: 1.0DEG  
 Test System:EVERFINE GO-2000B\_V1 SYSTEM V2.00.471  
 Humidity:65.0%  
 Test Distance:4.880m [K=1.0000]  
 Remarks:

WEC AND CCEC

$\rho_{cc}$	80%			70%			50%			30%			10%			0
$\rho_w$	50%	30%	10%	50%	30%	10%	50%	30%	10%	50%	30%	10%	50%	30%	10%	0
$\rho_{fc}$	20%			20%			20%			20%			20%			0
RCR	RCR:Room Cavity Ratio						Wall Exitance Coefficients(WEC)									
0.0																
1.0	.315	.179	.057	.307	.175	.056	.293	.168	.054	.280	.162	.052	.268	.155	.050	
2.0	.296	.162	.050	.289	.159	.049	.277	.154	.048	.265	.149	.047	.255	.144	.045	
3.0	.273	.145	.044	.267	.143	.043	.256	.139	.042	.246	.135	.041	.237	.131	.041	
4.0	.252	.131	.038	.247	.129	.038	.237	.126	.038	.228	.122	.037	.219	.119	.036	
5.0	.233	.119	.034	.228	.117	.034	.219	.114	.034	.211	.111	.033	.203	.109	.033	
6.0	.216	.108	.031	.211	.107	.031	.204	.104	.030	.196	.102	.030	.189	.100	.030	
7.0	.200	.099	.028	.197	.098	.028	.190	.096	.028	.183	.094	.027	.177	.092	.027	
8.0	.187	.091	.026	.184	.090	.026	.177	.089	.025	.172	.087	.025	.166	.085	.025	
9.0	.175	.085	.024	.172	.084	.024	.167	.082	.023	.161	.081	.023	.156	.079	.023	
10.0	.165	.079	.022	.162	.078	.022	.157	.077	.022	.152	.075	.021	.147	.074	.021	

$\rho_{cc}$	80%			70%			50%			30%			10%			0
$\rho_w$	50%	30%	10%	50%	30%	10%	50%	30%	10%	50%	30%	10%	50%	30%	10%	0
$\rho_{fc}$	20%			20%			20%			20%			20%			0
RCR	RCR:Room Cavity Ratio						Ceiling Cavity Exitance Coefficients(CCEC)									
0.0	.201	.201	.201	.172	.172	.172	.117	.117	.117	.067	.067	.067	.022	.022	.022	
1.0	.191	.167	.144	.163	.143	.124	.112	.098	.086	.064	.057	.050	.021	.018	.016	
2.0	.183	.142	.108	.157	.123	.093	.108	.085	.065	.062	.049	.038	.020	.016	.012	
3.0	.176	.125	.084	.151	.108	.073	.103	.075	.051	.060	.044	.030	.019	.014	.010	
4.0	.168	.112	.068	.144	.096	.060	.099	.067	.042	.057	.039	.025	.018	.013	.008	
5.0	.161	.101	.057	.138	.088	.050	.095	.061	.035	.055	.036	.021	.018	.012	.007	
6.0	.154	.093	.050	.132	.081	.043	.091	.056	.031	.053	.033	.018	.017	.011	.006	
7.0	.147	.086	.044	.126	.075	.038	.087	.052	.027	.051	.031	.016	.016	.010	.005	
8.0	.140	.080	.039	.121	.070	.034	.084	.049	.024	.049	.029	.014	.016	.009	.005	
9.0	.134	.075	.036	.116	.065	.031	.080	.046	.022	.047	.027	.013	.015	.009	.004	
10.0	.128	.071	.033	.111	.062	.029	.077	.043	.020	.045	.026	.012	.015	.008	.004	

C Range: 0 - 360DEG  
 C Interval: 15.0DEG  
 Test Speed: HIGH  
 Temperature:25.3°C  
 Operators:DAMIN  
 Test Date:2023-11-24

$\gamma$  Range: 0 - 180DEG  
 $\gamma$  Interval: 1.0DEG  
 Test System:EVERFINE GO-2000B\_V1 SYSTEM V2.00.471  
 Humidity:65.0%  
 Test Distance:4.880m [K=1.0000]  
 Remarks:

**UGR(Unified Glare Rating) Table**

ceiling/cavity	0.7	0.7	0.5	0.5	0.3	0.7	0.7	0.5	0.5	0.3
walls	0.5	0.3	0.5	0.3	0.3	0.5	0.3	0.5	0.3	0.3
working plane	0.2	0.2	0.2	0.2	0.2	0.2	0.2	0.2	0.2	0.2
Room dimensions	Viewed crosswise					Viewed endwise				
x = 2H y = 2H	24.8	26.3	25.0	26.5	26.7	24.6	26.1	24.9	26.4	26.6
3H	26.4	27.9	26.8	28.1	28.4	26.2	27.6	26.5	27.9	28.2
4H	27.1	28.5	27.5	28.8	29.0	26.9	28.2	27.2	28.5	28.8
6H	27.7	28.9	28.0	29.2	29.5	27.3	28.6	27.6	28.8	29.2
8H	27.8	29.1	28.2	29.4	29.7	27.4	28.6	27.8	28.9	29.3
12H	28.0	29.1	28.3	29.4	29.8	27.5	28.7	27.9	29.0	29.3
4H 2H	25.4	26.8	25.8	27.1	27.3	25.3	26.7	25.7	26.9	27.2
3H	27.3	28.5	27.7	28.8	29.1	27.1	28.3	27.5	28.6	29.0
4H	28.2	29.2	28.6	29.6	29.9	27.9	29.0	28.3	29.3	29.7
6H	28.8	29.8	29.2	30.2	30.5	28.5	29.4	28.9	29.8	30.2
8H	29.1	29.9	29.5	30.3	30.8	28.7	29.6	29.1	30.0	30.4
12H	29.2	30.0	29.7	30.5	30.9	28.8	29.6	29.2	30.0	30.5
8H 4H	28.5	29.4	28.9	29.8	30.2	28.3	29.2	28.7	29.6	30.0
6H	29.3	30.1	29.8	30.5	30.9	29.0	29.8	29.5	30.2	30.7
8H	29.7	30.3	30.2	30.8	31.3	29.3	30.0	29.8	30.4	30.9
12H	29.9	30.5	30.4	31.0	31.5	29.5	30.1	30.0	30.6	31.1
12H 4H	28.5	29.3	29.0	29.7	30.2	28.3	29.1	28.8	29.5	30.0
6H	29.4	30.1	29.9	30.5	31.0	29.1	29.8	29.6	30.2	30.7
8H	29.8	30.4	30.3	30.8	31.3	29.5	30.0	30.0	30.5	31.0
Variations with the observer position at spacings(CIE Pub.117):										
S = 1.0H	+ 0.1 / - 0.2					+ 0.1 / - 0.2				
1.5H	+ 0.2 / - 0.3					+ 0.2 / - 0.4				
2.0H	+ 0.2 / - 0.4					+ 0.2 / - 0.5				

CIE Pub.117, 2215 lm Total Lamp Luminous Flux Correct (8log(F/F0) = 2.8)  
 Area: 0.012 m2

C Range: 0 - 360DEG  
 C Interval: 15.0DEG  
 Test Speed: HIGH  
 Temperature:25.3°C  
 Operators:DAMIN  
 Test Date:2023-11-24

γ Range: 0 - 180DEG  
 γ Interval: 1.0DEG  
 Test System:EVERFINE GO-2000B\_V1 SYSTEM V2.00.471  
 Humidity:65.0%  
 Test Distance:4.880m [K=1.0000]  
 Remarks:

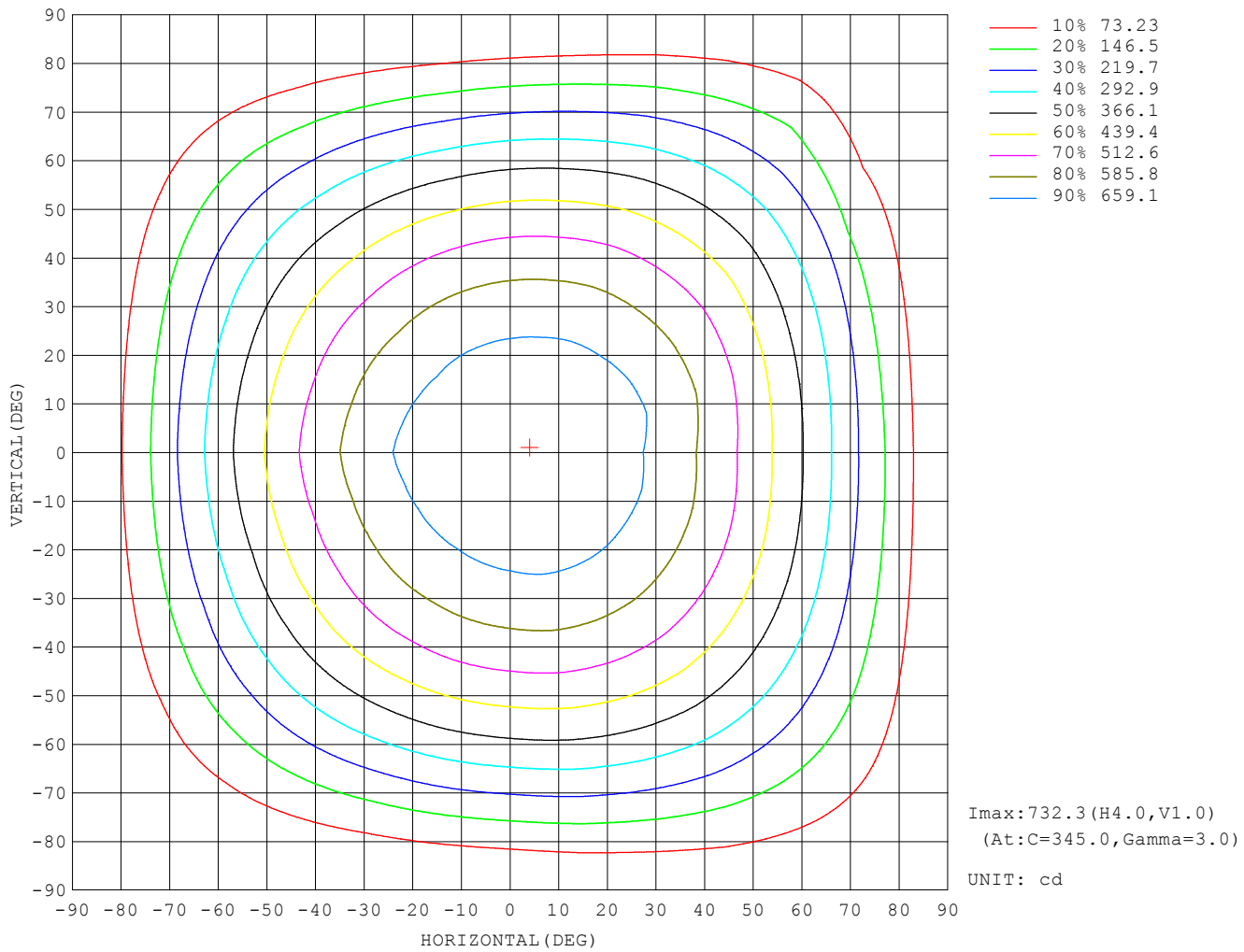
**UTILIZATION FACTORS TABLE**

REFLECTANCE										
Ceiling	0.8	0.8	0.8	0.7	0.7	0.7	0.5	0.5	0.5	0
Walls	0.7	0.5	0.3	0.7	0.5	0.3	0.7	0.5	0.3	0
Working plane	0.2	0.2	0.2	0.2	0.2	0.2	0.2	0.2	0.2	0
ROOM INDEX	UTILIZATION FACTORS (PERCENT) $k(RI) \times RCR = 5$									
$k = 0.60$	56	44	37	55	44	37	54	44	37	31
0.80	66	54	47	65	54	47	63	53	46	39
1.00	75	63	56	73	63	56	71	64	55	48
1.25	82	71	64	80	70	63	78	69	63	55
1.50	87	77	70	85	76	69	82	74	68	60
2.00	94	85	79	92	84	78	88	82	76	68
2.50	98	90	84	96	89	83	92	86	81	72
3.00	101	94	89	99	93	88	95	90	85	76
4.00	106	100	95	103	98	93	99	94	91	81
5.00	108	103	99	105	101	97	101	97	94	84
ROOM INDEX	UF (total)									Direct
According to DIN EN 13032-2 2004			Suspended				SHRNOM = 1.25			

C Range: 0 - 360DEG  
 C Interval: 15.0DEG  
 Test Speed: HIGH  
 Temperature: 25.3°C  
 Operators: DAMIN  
 Test Date: 2023-11-24

$\gamma$  Range: 0 - 180DEG  
 $\gamma$  Interval: 1.0DEG  
 Test System: EVERFINE GO-2000B\_V1 SYSTEM V2.00.471  
 Humidity: 65.0%  
 Test Distance: 4.880m [K=1.0000]  
 Remarks:

**ISOCANDELA DIAGRAM**

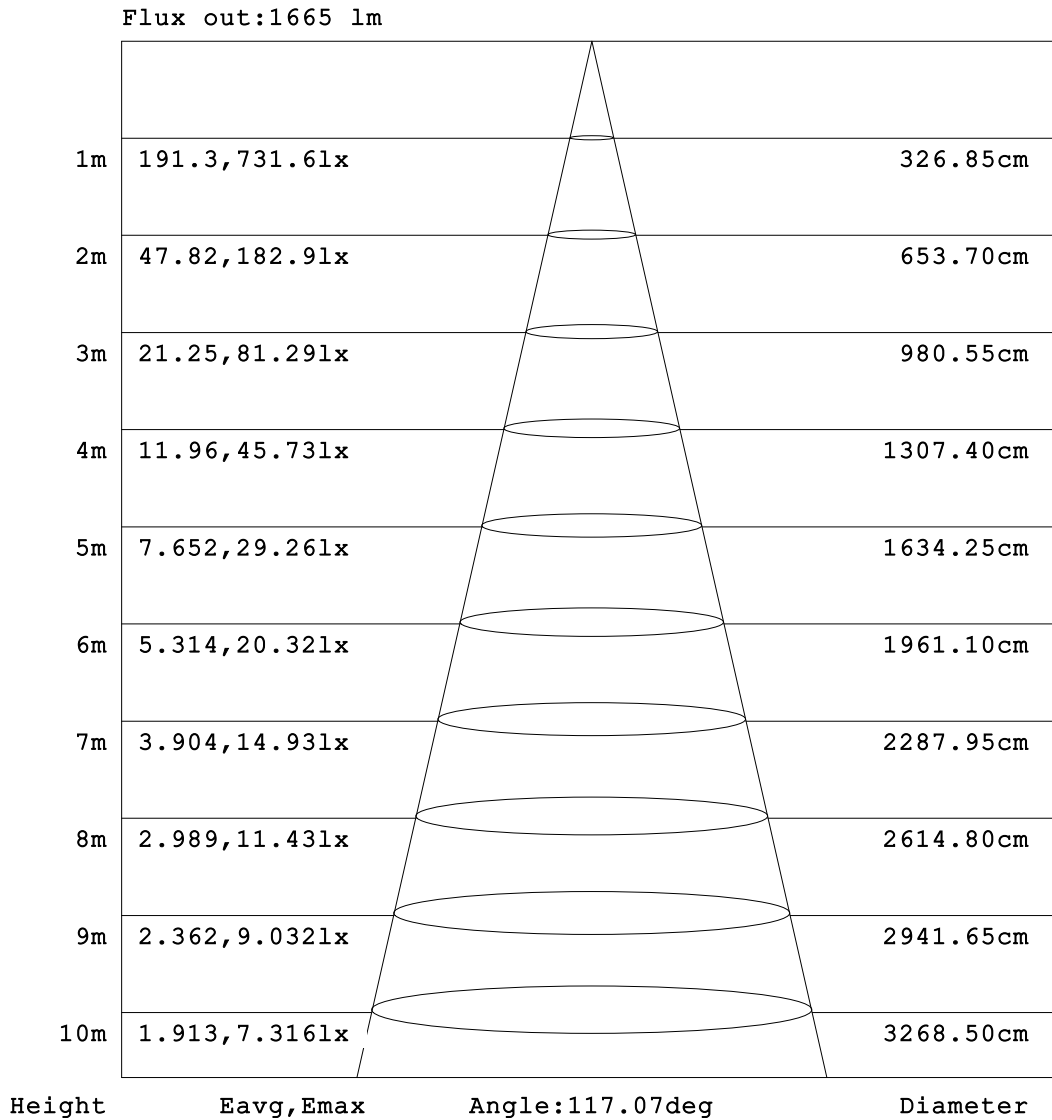


C Range: 0 - 360DEG  
 C Interval: 15.0DEG  
 Test Speed: HIGH  
 Temperature: 25.3°C  
 Operators: DAMIN  
 Test Date: 2023-11-24

γ Range: 0 - 180DEG  
 γ Interval: 1.0DEG  
 Test System: EVERFINE GO-2000B\_V1 SYSTEM V2.00.471  
 Humidity: 65.0%  
 Test Distance: 4.880m [K=1.0000]  
 Remarks:



**AAI Figure**

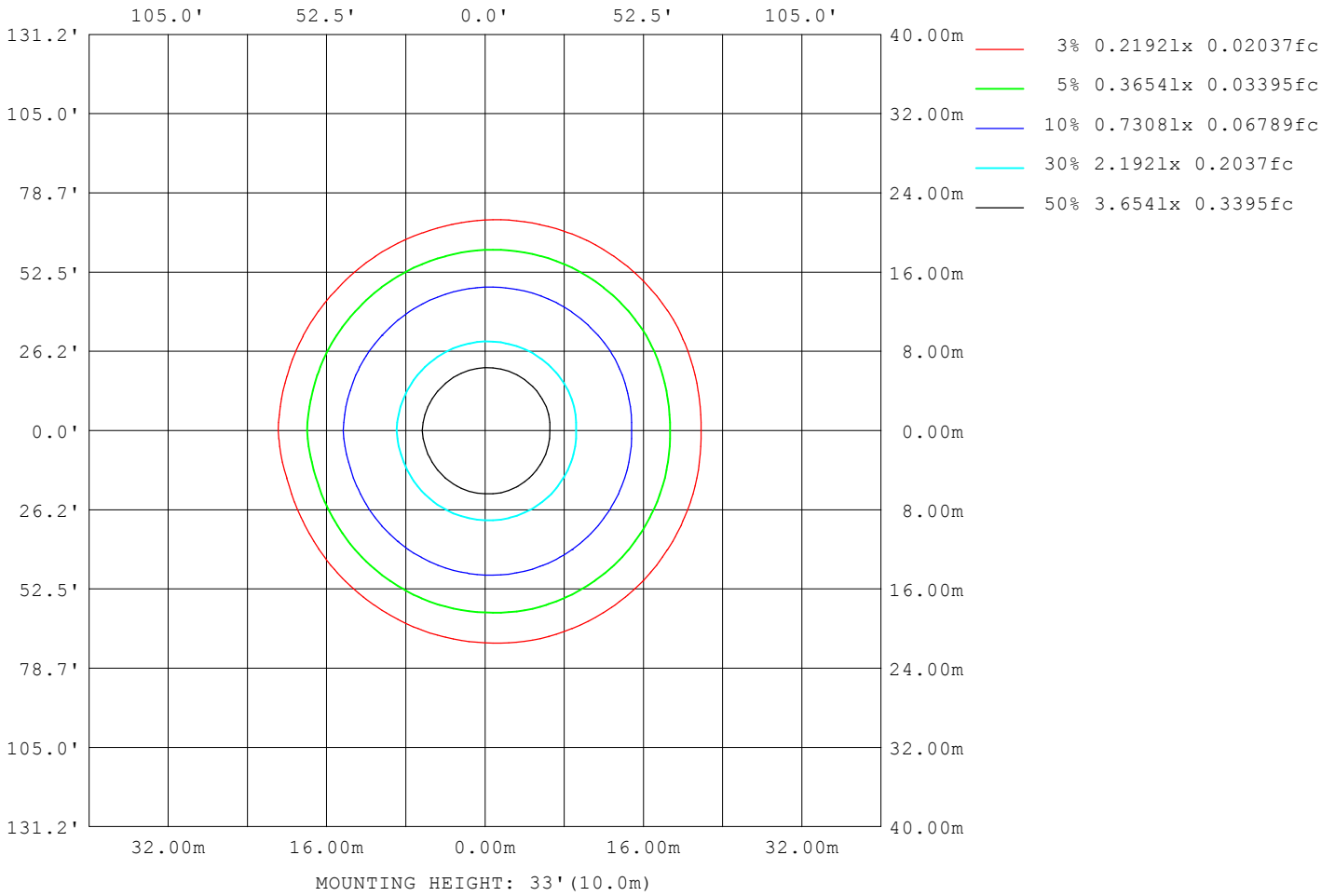


**Note:**The Curves indicate the illuminated area and the average illumination when the luminaire is at different distance.

C Range: 0 - 360DEG  
 C Interval: 15.0DEG  
 Test Speed: HIGH  
 Temperature:25.3°C  
 Operators:DAMIN  
 Test Date:2023-11-24

γ Range: 0 - 180DEG  
 γ Interval: 1.0DEG  
 Test System:EVERFINE GO-2000B\_V1 SYSTEM V2.00.471  
 Humidity:65.0%  
 Test Distance:4.880m [K=1.0000]  
 Remarks:

**ISOLUX DIAGRAM**



C Range: 0 - 360DEG  
 C Interval: 15.0DEG  
 Test Speed: HIGH  
 Temperature: 25.3°C  
 Operators: DAMIN  
 Test Date: 2023-11-24

γ Range: 0 - 180DEG  
 γ Interval: 1.0DEG  
 Test System: EVERFINE GO-2000B\_V1 SYSTEM V2.00.471  
 Humidity: 65.0%  
 Test Distance: 4.880m [K=1.0000]  
 Remarks:

LED Avg.L Report

NAME: LED Strip	TYPE: Indoor lighting	WEIGHT: 20g
SPEC.: 2835 238LED	DIM.: 500*12*1.2MM	SERIAL No.: 20231123011
MFR.: EVERFINE	SUR.: 500*12MM	Shielding Angle:

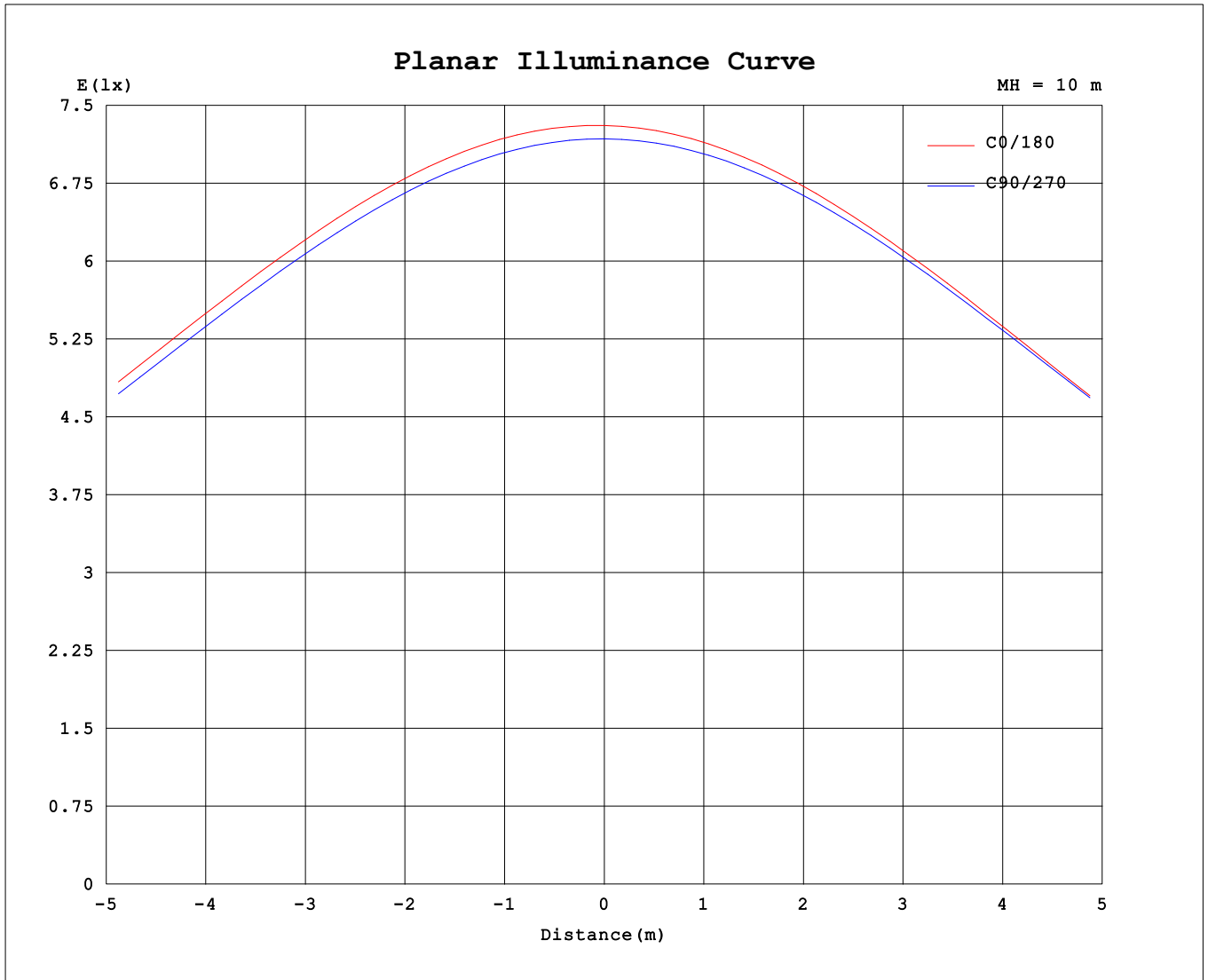
AvgL	cd/m2
L_0~180 (65) av	56351
L_0~180 (75) av	49435
L_0~180 (85) av	34580
L_90~270 (65) av	56276
L_90~270 (75) av	49278
L_90~270 (85) av	33867
L_45 (65) av	56408
L_45 (75) av	49494
L_45 (85) av	35935

Standard: GB/T 29293-2012

C Range: 0 - 360DEG  
 C Interval: 15.0DEG  
 Test Speed: HIGH  
 Temperature:25.3°C  
 Operators:DAMIN  
 Test Date:2023-11-24

γ Range: 0 - 180DEG  
 γ Interval: 1.0DEG  
 Test System:EVERFINE GO-2000B\_V1 SYSTEM V2.00.471  
 Humidity:65.0%  
 Test Distance:4.880m [K=1.0000]  
 Remarks:

**Planar Illuminance Curve**



C Range: 0 - 360DEG  
 C Interval: 15.0DEG  
 Test Speed: HIGH  
 Temperature: 25.3°C  
 Operators: DAMIN  
 Test Date: 2023-11-24

γ Range: 0 - 180DEG  
 γ Interval: 1.0DEG  
 Test System: EVERFINE GO-2000B\_V1 SYSTEM V2.00.471  
 Humidity: 65.0%  
 Test Distance: 4.880m [K=1.0000]  
 Remarks:

LUMINOUS DISTRIBUTION INTENSITY DATA

Table--1

UNIT: cd

C (DEG) \ γ (DEG)	0	15	30	45	60	75	90	105	120	135	150	165	180	195	210	225	240	255	270
0	731	729	722	721	720	720	718	718	719	721	726	731	731	729	722	721	720	720	718
5	730	729	723	721	720	719	716	715	715	716	720	725	726	723	717	715	715	715	715
10	724	724	718	716	715	713	709	707	706	706	708	713	716	712	706	704	705	706	707
15	712	713	708	706	704	702	696	693	691	690	692	696	701	695	690	688	690	691	693
20	694	697	693	691	688	685	679	675	671	670	670	673	680	673	669	667	670	672	675
25	672	675	672	670	667	663	656	651	646	644	643	645	654	647	642	640	644	647	651
30	644	648	646	645	641	637	628	622	616	613	611	613	622	614	611	609	613	617	622
35	610	616	615	614	610	604	595	588	580	577	573	575	585	577	574	572	576	582	588
40	572	578	578	577	573	567	556	548	540	535	531	532	543	535	533	531	535	541	549
45	528	535	536	535	531	524	512	504	494	489	483	484	497	489	486	484	489	496	505
50	480	487	488	489	484	476	464	454	444	437	431	432	445	437	435	433	439	446	456
55	427	434	436	437	432	424	410	400	389	381	374	375	389	381	379	378	383	391	402
60	369	376	379	379	374	366	352	341	329	320	314	314	328	321	319	318	324	331	344
65	307	314	317	318	312	304	290	278	265	257	250	249	265	258	256	255	261	268	281
70	242	249	251	252	246	239	224	213	199	191	183	183	198	192	190	189	195	202	216
75	175	182	184	185	179	171	157	146	133	125	118	118	132	126	125	124	130	137	149
80	109	115	117	118	112	105	92.1	82.4	71.5	64.3	58.5	57.7	70.5	65.4	64.6	64.0	69.4	75.2	85.5
85	50.4	55.6	57.2	57.8	53.1	47.0	38.1	31.0	23.4	19.4	15.5	15.6	21.9	19.0	19.4	19.1	22.3	25.8	32.7
90	10.4	13.5	14.7	15.3	12.3	8.51	3.09	3.36	3.53	3.74	4.13	5.11	2.90	3.20	3.50	3.39	3.38	3.23	3.89
95	2.82	3.24	3.54	3.29	2.51	2.37	2.34	2.51	2.49	2.50	2.91	4.29	2.52	2.46	2.45	2.47	2.51	2.55	2.49
100	2.34	2.35	2.36	2.41	2.45	2.46	2.50	2.59	2.61	2.65	2.93	3.98	2.68	2.73	2.76	2.79	2.78	2.76	2.69
105	2.66	2.64	2.64	2.66	2.71	2.78	2.90	2.96	3.02	3.06	3.15	3.71	3.13	3.19	3.21	3.25	3.23	3.21	3.13
110	3.11	3.07	3.07	3.09	3.15	3.25	3.38	3.43	3.48	3.52	3.54	3.67	3.60	3.65	3.68	3.71	3.70	3.69	3.62
115	3.56	3.52	3.52	3.55	3.62	3.72	3.86	3.90	3.94	3.97	4.00	3.95	4.05	4.11	4.14	4.18	4.17	4.17	4.11
120	4.00	3.97	3.98	4.01	4.07	4.18	4.33	4.36	4.39	4.42	4.45	4.39	4.50	4.56	4.59	4.63	4.63	4.63	4.58
125	4.44	4.41	4.43	4.46	4.53	4.64	4.78	4.82	4.84	4.86	4.88	4.83	4.94	5.00	5.03	5.07	5.08	5.09	5.04
130	4.89	4.86	4.88	4.91	4.98	5.10	5.24	5.27	5.30	5.32	5.33	5.28	5.38	5.43	5.47	5.51	5.52	5.54	5.48
135	5.34	5.33	5.34	5.37	5.44	5.55	5.68	5.72	5.75	5.77	5.77	5.79	5.80	5.86	5.89	5.94	5.95	5.97	5.91
140	5.78	5.79	5.80	5.83	5.90	6.00	6.12	6.16	6.18	6.20	6.21	6.22	6.21	6.26	6.29	6.34	6.36	6.38	6.32
145	6.21	6.26	6.26	6.28	6.34	6.43	6.54	6.58	6.60	6.62	6.63	6.60	6.60	6.65	6.68	6.73	6.75	6.76	6.71
150	6.65	6.71	6.70	6.72	6.76	6.84	6.93	6.98	7.00	7.02	7.05	7.02	6.98	7.03	7.05	7.10	7.12	7.13	7.08
155	7.09	7.13	7.12	7.12	7.16	7.23	7.31	7.35	7.37	7.39	7.44	7.45	7.35	7.37	7.40	7.44	7.46	7.47	7.42
160	7.51	7.52	7.50	7.50	7.53	7.59	7.65	7.70	7.71	7.74	7.80	7.90	7.72	7.69	7.72	7.76	7.78	7.78	7.74
165	7.92	7.90	7.86	7.86	7.87	7.92	7.95	8.00	8.02	8.07	8.16	8.35	8.07	8.00	8.03	8.06	8.08	8.07	8.03
170	8.26	8.23	8.19	8.18	8.18	8.21	8.24	8.27	8.29	8.34	8.48	8.81	8.37	8.28	8.30	8.31	8.33	8.32	8.29
175	8.52	8.49	8.44	8.44	8.44	8.46	8.47	8.49	8.50	8.55	8.71	9.12	8.58	8.50	8.51	8.50	8.52	8.50	8.49
180	8.69	8.64	8.61	8.61	8.61	8.61	8.61	8.61	8.62	8.65	8.83	9.37	8.70	8.63	8.62	8.61	8.61	8.61	8.61

C Range: 0 - 360DEG  
 C Interval: 15.0DEG  
 Test Speed: HIGH  
 Temperature: 25.3°C  
 Operators: DAMIN  
 Test Date: 2023-11-24

γ Range: 0 - 180DEG  
 γ Interval: 1.0DEG  
 Test System: EVERFINE GO-2000B\_V1 SYSTEM V2.00.471  
 Humidity: 65.0%  
 Test Distance: 4.880m [K=1.0000]  
 Remarks:

LUMINOUS DISTRIBUTION INTENSITY DATA

Table--2

UNIT: cd

C (DEG) \ γ (DEG)	285	300	315	330	345														
0	718	719	721	726	731														
5	716	718	721	726	732														
10	709	712	716	722	728														
15	696	701	705	712	717														
20	679	685	689	696	702														
25	656	663	669	676	681														
30	628	637	642	650	654														
35	595	605	611	618	622														
40	557	568	574	582	585														
45	514	526	532	540	540														
50	466	479	485	494	490														
55	413	426	433	441	435														
60	356	369	376	384	375														
65	294	307	315	320	313														
70	229	242	250	253	247														
75	162	175	181	185	159														
80	96.3	108	114	118	79.5														
85	40.2	49.3	54.1	48.4	41.8														
90	6.82	7.91	10.1	14.7	17.7														
95	2.50	2.83	3.32	3.60	3.38														
100	2.63	2.55	2.48	2.48	2.73														
105	3.02	2.90	2.83	2.84	3.15														
110	3.49	3.36	3.29	3.29	3.65														
115	3.96	3.83	3.75	3.76	4.15														
120	4.43	4.28	4.21	4.23	4.65														
125	4.88	4.74	4.67	4.69	5.15														
130	5.34	5.18	5.12	5.15	5.66														
135	5.77	5.63	5.57	5.61	6.26														
140	6.19	6.06	6.01	6.06	6.67														
145	6.60	6.48	6.44	6.51	7.11														
150	6.98	6.88	6.86	6.95	7.57														
155	7.34	7.26	7.24	7.37	8.00														
160	7.67	7.60	7.61	7.76	8.39														
165	7.98	7.93	7.95	8.13	8.76														
170	8.25	8.23	8.26	8.47	9.07														
175	8.46	8.46	8.50	8.69	9.26														
180	8.61	8.62	8.67	8.80	9.43														

C Range: 0 - 360DEG  
 C Interval: 15.0DEG  
 Test Speed: HIGH  
 Temperature:25.3°C  
 Operators:DAMIN  
 Test Date:2023-11-24

γ Range: 0 - 180DEG  
 γ Interval: 1.0DEG  
 Test System:EVERFINE GO-2000B\_V1 SYSTEM V2.00.471  
 Humidity:65.0%  
 Test Distance:4.880m [K=1.0000]  
 Remarks: