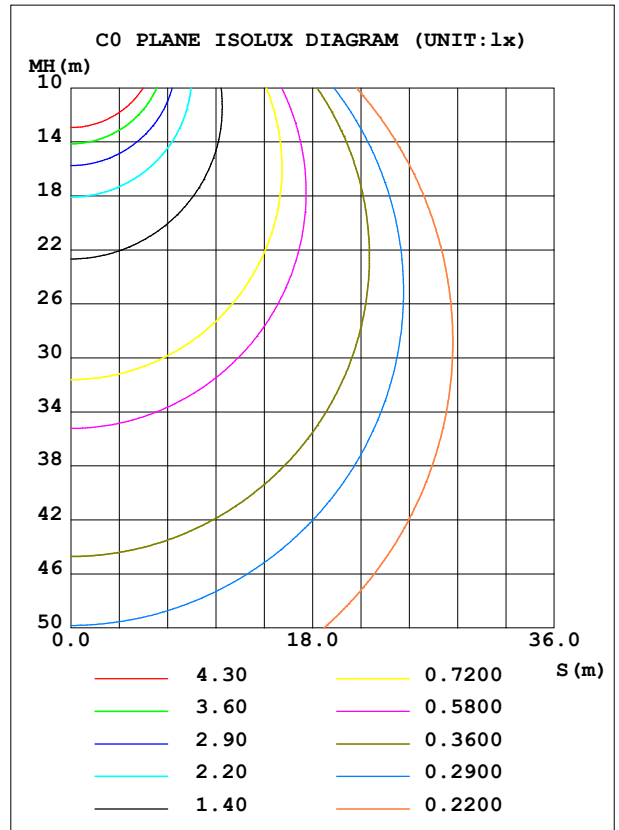
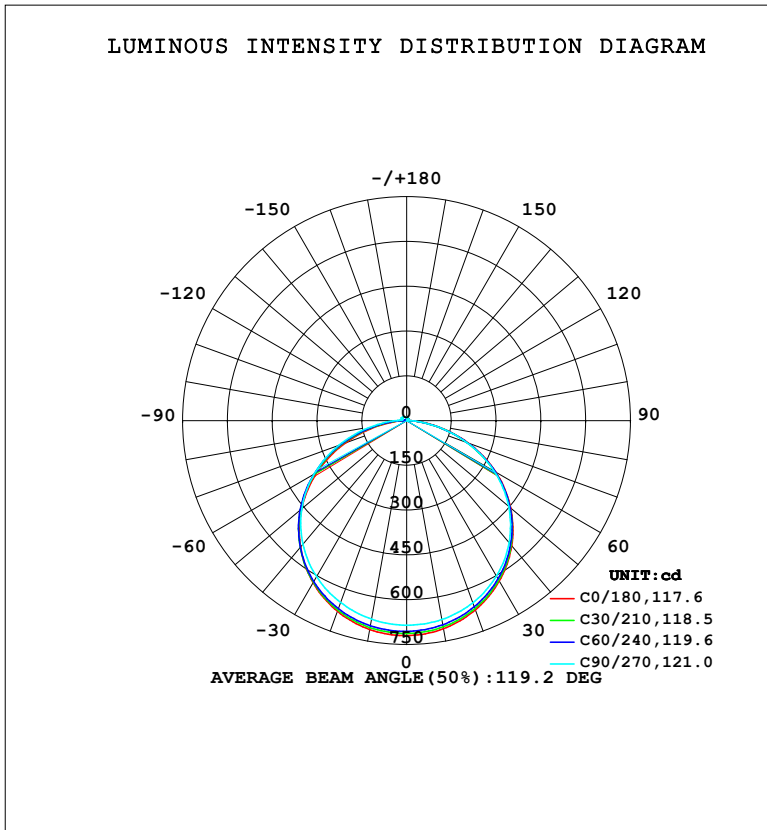


LUMINAIRE PHOTOMETRIC TEST REPORT

NAME: LED Strip	TYPE: Indoor lighting	WEIGHT: 20g
SPEC.: 2835 180LED	DIM.: 1000*8*1.2MM	SERIAL No.: 20230224063
MFR.: EVERFINE	SUR.: 1000*8*1.2MM	Shielding Angle:

DATA OF LAMP		PHOTOMETRIC DATA			
WW-FMSDB2T28WW180B-24 (WCP) -HR-EP		Imax (cd)	719.7	S/MH (C0/180)	1.29
NOMINAL POWER (W)	18.8643	LOR (%)	100.0	S/MH (C90/270)	1.31
RATED VOLTAGE (V)	DC 24V	TOTAL FLUX (lm)	2242.2	<input type="checkbox"/> UP, DN (C0-180)	0.9, 46.8
NOMINAL FLUX (lm)	2242.16	CIE CLASS	DIRECT	<input type="checkbox"/> UP, DN (C180-360)	4.2, 48.1
LAMPS INSIDE	1	<input type="checkbox"/> up (%)	5.1	CIBSE SHR NOM	1.25
TEST VOLTAGE (V)	DC 24V	<input type="checkbox"/> down (%)	94.9	CIBSE SHR MAX	1.35



C Range: 0 - 360DEG
 C Interval: 15.0DEG
 Test Speed: HIGH
 Temperature: 25.3°C
 Operators: DAMIN
 Test Date: 2023-02-25

Range: 0 - 180DEG
 Interval: 1.0DEG
 Test System: EVERFINE GO-2000B_V1 SYSTEM V2.00.471
 Humidity: 65.0%
 Test Distance: 4.880m [K=1.0000]
 Remarks:

ZONAL FLUX DIAGRAM

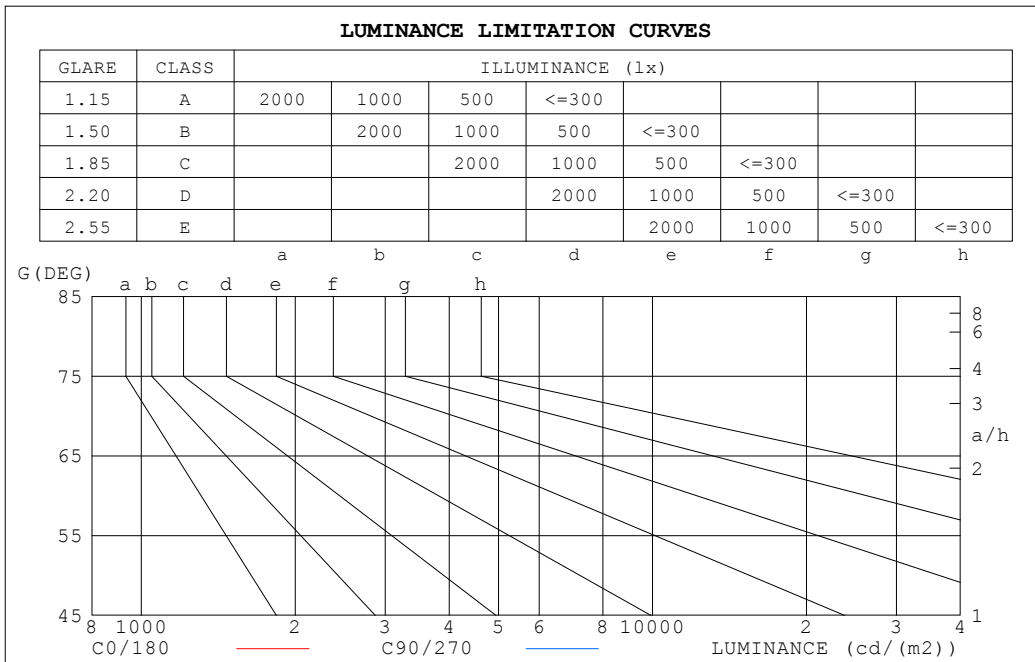
ZONAL FLUX DIAGRAM:

°	C0	C45	C90	C135	C180	C225	C270	C315	°	□ zone	□ total	%lum, lamp
10	707.7	697.6	676.6	640.2	710.5	700.5	675.3	633.3	0- 10	64.84	64.84	2.89,2.89
20	674.3	665.9	649.0	616.1	679.3	672.0	648.1	602.8	10- 20	187.1	251.9	11.2,11.2
30	620.8	614.7	601.6	572.9	626.9	623.3	603.6	554.9	20- 30	287.6	539.6	24.1,24.1
40	547.4	543.2	534.0	509.9	553.3	554.3	540.7	491.2	30- 40	354.1	893.7	39.9,39.9
50	455.0	452.1	446.2	427.0	459.5	465.6	458.5	413.2	40- 50	377.2	1271	56.7,56.7
60	344.6	342.0	338.6	324.3	346.5	357.5	357.7	322.4	50- 60	351.7	1623	72.4,72.4
70	219.3	217.1	214.0	206.8	217.8	233.5	241.2	222.6	60- 70	278.2	1901	84.8,84.8
80	91.54	89.16	87.92	86.18	87.84	105.7	120.6	122.7	70- 80	168.3	2069	92.3,92.3
90	7.433	8.754	7.314	11.90	5.517	19.75	33.84	57.70	80- 90	58.99	2128	94.9,94.9
100	2.635	2.684	2.874	5.661	2.734	8.853	16.88	60.19	90-100	19.07	2147	95.8,95.8
110	3.216	3.445	3.632	4.144	3.382	3.492	17.91	66.44	100-110	17.36	2164	96.5,96.5
120	4.088	4.301	4.457	3.937	4.247	4.363	19.94	69.87	110-120	17.22	2182	97.3,97.3
130	4.955	5.141	5.233	5.448	5.099	5.216	18.22	70.82	120-130	16.38	2198	98,98
140	5.816	5.980	5.975	9.712	5.927	6.032	16.48	69.39	130-140	14.62	2213	98.7,98.7
150	6.643	6.767	6.695	16.00	6.720	6.790	14.42	65.61	140-150	12.25	2225	99.2,99.2
160	7.445	7.450	7.321	23.98	7.486	7.461	12.30	59.67	150-160	9.375	2234	99.6,99.6
170	8.117	8.029	7.846	33.55	8.150	8.029	10.15	52.27	160-170	5.891	2240	99.9,99.9
180	8.499	8.376	9.007	43.17	8.499	8.360	8.421	43.69	170-180	2.007	2242	100,100
DEG	LUMINOUS INTENSITY:cd									UNIT:lm		

C Range: 0 - 360DEG
 C Interval: 15.0DEG
 Test Speed: HIGH
 Temperature:25.3°C
 Operators:DAMIN
 Test Date:2023-02-25

□ Range: 0 - 180DEG
 □ Interval: 1.0DEG
 Test System:EVERFINE GO-2000B_V1 SYSTEM V2.00.471
 Humidity:65.0%
 Test Distance:4.880m [K=1.0000]
 Remarks:

LUMINANCE LIMITATION CURVES



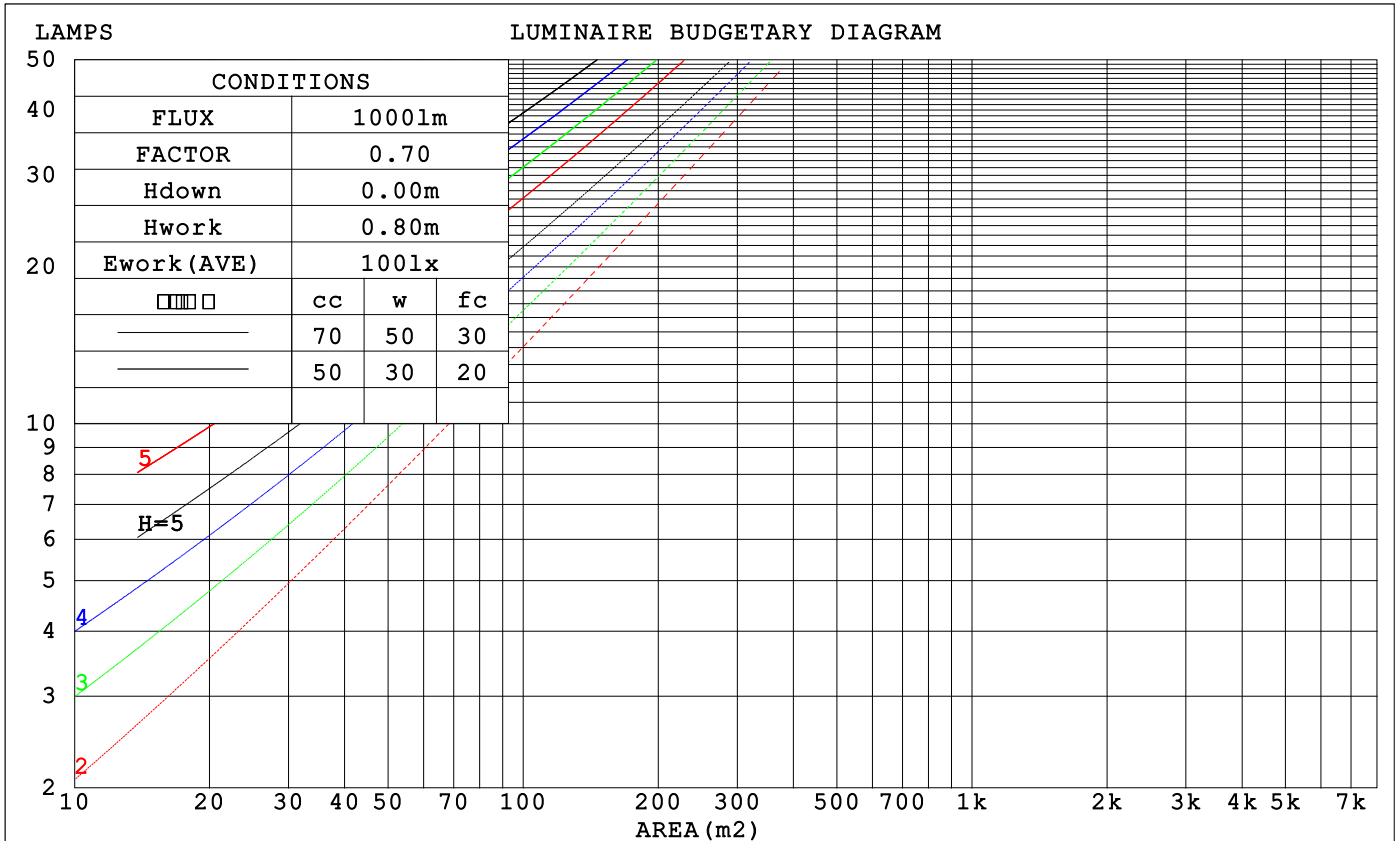
LUMINANCE cd/(m2)		
G (DEG)	C0/180	C90/270
85	88515	87598
80	105429	101267
75	119252	115426
70	128257	125157
65	134155	131608
60	137826	135448
55	140147	137666
50	141566	138826
45	142418	139330

C Range: 0 - 360DEG
 C Interval: 15.0DEG
 Test Speed: HIGH
 Temperature: 25.3°C
 Operators: DAMIN
 Test Date: 2023-02-25

Range: 0 - 180DEG
 Interval: 1.0DEG
 Test System: EVERFINE GO-2000B_V1 SYSTEM V2.00.471
 Humidity: 65.0%
 Test Distance: 4.880m [K=1.0000]
 Remarks:

CU AND LUMINAIRE BUDGETARY ESTIMATE DIAGRAM

□cc	80%			70%			50%			30%			10%			0
□w	50%	30%	10%	50%	30%	10%	50%	30%	10%	50%	30%	10%	50%	30%	10%	0
□fc	20%			20%			20%			20%			20%			0
RCR	RCR:Room Cavity Ratio			Coefficients of Utilization(CU)												
0.0	1.18	1.18	1.18	1.15	1.15	1.15	1.08	1.08	1.08	1.03	1.03	1.03	.97	.97	.97	.95
1.0	1.02	.97	.93	.99	.95	.91	.94	.91	.88	.89	.86	.84	.85	.83	.81	.78
2.0	.88	.81	.75	.86	.80	.74	.82	.76	.72	.78	.73	.69	.74	.70	.67	.64
3.0	.77	.69	.62	.75	.67	.61	.72	.65	.59	.68	.62	.58	.65	.60	.56	.54
4.0	.68	.59	.52	.66	.58	.52	.63	.56	.50	.60	.54	.49	.58	.52	.48	.46
5.0	.61	.52	.45	.59	.51	.44	.57	.49	.43	.54	.47	.42	.52	.46	.41	.39
6.0	.54	.45	.39	.53	.45	.38	.51	.43	.38	.49	.42	.37	.47	.41	.36	.34
7.0	.49	.40	.34	.48	.40	.34	.46	.39	.33	.44	.38	.33	.43	.37	.32	.30
8.0	.45	.36	.30	.44	.36	.30	.42	.35	.30	.41	.34	.29	.39	.33	.29	.27
9.0	.41	.33	.27	.40	.32	.27	.39	.32	.27	.37	.31	.26	.36	.30	.26	.24
10.0	.38	.30	.25	.37	.30	.24	.36	.29	.24	.35	.28	.24	.33	.28	.23	.22



C Range: 0 - 360DEG
 C Interval: 15.0DEG
 Test Speed: HIGH
 Temperature:25.3°C
 Operators:DAMIN
 Test Date:2023-02-25

□ Range: 0 - 180DEG
 □ Interval: 1.0DEG
 Test System:EVERFINE GO-2000B_V1 SYSTEM V2.00.471
 Humidity:65.0%
 Test Distance:4.880m [K=1.0000]
 Remarks:

WEC AND CCEC

□cc	80%			70%			50%			30%			10%			0
□w	50%	30%	10%	50%	30%	10%	50%	30%	10%	50%	30%	10%	50%	30%	10%	0
□fc	20%			20%			20%			20%			20%			0
RCR	RCR:Room Cavity Ratio						Wall Exitance Coefficients(WEC)									
0.0																
1.0	.323	.184	.058	.315	.179	.057	.298	.171	.055	.283	.163	.052	.270	.156	.050	
2.0	.300	.164	.050	.292	.161	.050	.278	.155	.048	.265	.148	.046	.252	.143	.045	
3.0	.276	.147	.044	.269	.144	.043	.256	.139	.042	.244	.134	.041	.233	.129	.040	
4.0	.253	.132	.039	.247	.129	.038	.236	.125	.037	.225	.121	.036	.215	.117	.036	
5.0	.233	.119	.034	.228	.117	.034	.218	.113	.033	.208	.110	.033	.199	.106	.032	
6.0	.216	.108	.031	.211	.107	.031	.202	.103	.030	.193	.100	.029	.185	.097	.029	
7.0	.201	.099	.028	.196	.098	.028	.188	.095	.027	.180	.092	.027	.172	.090	.026	
8.0	.187	.091	.026	.183	.090	.025	.175	.088	.025	.168	.085	.025	.162	.083	.024	
9.0	.175	.085	.024	.171	.084	.023	.165	.081	.023	.158	.079	.023	.152	.077	.022	
10.0	.164	.079	.022	.161	.078	.022	.155	.076	.021	.149	.074	.021	.143	.072	.021	

□cc	80%			70%			50%			30%			10%			0
□w	50%	30%	10%	50%	30%	10%	50%	30%	10%	50%	30%	10%	50%	30%	10%	0
□fc	20%			20%			20%			20%			20%			0
RCR	RCR:Room Cavity Ratio						Ceiling Cavity Exitance Coefficients(CCEC)									
0.0	.229	.229	.229	.196	.196	.196	.134	.134	.134	.077	.077	.077	.025	.025	.025	
1.0	.220	.195	.172	.189	.167	.148	.129	.115	.103	.074	.067	.060	.024	.021	.019	
2.0	.213	.171	.136	.182	.147	.118	.125	.102	.082	.072	.059	.048	.023	.019	.016	
3.0	.205	.154	.113	.176	.133	.098	.121	.092	.069	.070	.054	.041	.022	.017	.013	
4.0	.198	.141	.097	.170	.122	.085	.117	.085	.060	.067	.050	.035	.022	.016	.012	
5.0	.190	.131	.087	.163	.113	.075	.113	.079	.053	.065	.046	.032	.021	.015	.010	
6.0	.183	.122	.079	.157	.106	.069	.109	.074	.049	.063	.044	.029	.020	.014	.010	
7.0	.176	.116	.073	.152	.100	.064	.105	.070	.045	.061	.041	.027	.020	.014	.009	
8.0	.170	.110	.069	.146	.095	.060	.101	.067	.043	.059	.039	.025	.019	.013	.008	
9.0	.164	.105	.065	.141	.091	.057	.098	.064	.040	.057	.038	.024	.018	.012	.008	
10.0	.158	.101	.063	.136	.087	.055	.094	.062	.039	.055	.036	.023	.018	.012	.008	

C Range: 0 - 360DEG
 C Interval: 15.0DEG
 Test Speed: HIGH
 Temperature:25.3°C
 Operators:DAMIN
 Test Date:2023-02-25

□ Range: 0 - 180DEG
 □ Interval: 1.0DEG
 Test System:EVERFINE GO-2000B_V1 SYSTEM V2.00.471
 Humidity:65.0%
 Test Distance:4.880m [K=1.0000]
 Remarks:

UGR(Unified Glare Rating) Table

ceiling/cavity	0.7	0.7	0.5	0.5	0.3	0.7	0.7	0.5	0.5	0.3
walls	0.5	0.3	0.5	0.3	0.3	0.5	0.3	0.5	0.3	0.3
working plane	0.2	0.2	0.2	0.2	0.2	0.2	0.2	0.2	0.2	0.2
Room dimensions	Viewed crosswise					Viewed endwise				
x = 2H y = 2H	27.1	28.6	27.4	28.9	29.2	27.0	28.5	27.4	28.8	29.1
3H	28.7	30.0	29.1	30.4	30.7	28.6	30.0	29.0	30.3	30.6
4H	29.3	30.6	29.7	30.9	31.3	29.2	30.5	29.6	30.9	31.2
6H	29.7	31.0	30.1	31.3	31.7	29.6	30.9	30.0	31.2	31.6
8H	29.9	31.0	30.3	31.4	31.8	29.8	30.9	30.2	31.3	31.7
12H	29.9	31.1	30.4	31.5	31.9	29.8	31.0	30.3	31.3	31.8
4H 2H	27.7	29.0	28.1	29.3	29.7	27.7	28.9	28.0	29.3	29.7
3H	29.4	30.6	29.9	31.0	31.4	29.4	30.5	29.8	30.9	31.3
4H	30.2	31.2	30.6	31.6	32.1	30.1	31.2	30.6	31.6	32.0
6H	30.7	31.7	31.2	32.1	32.6	30.7	31.6	31.1	32.0	32.5
8H	30.9	31.8	31.4	32.2	32.7	30.8	31.7	31.3	32.2	32.7
12H	31.0	31.8	31.5	32.3	32.8	30.9	31.7	31.5	32.2	32.7
8H 4H	30.4	31.3	30.9	31.7	32.2	30.4	31.2	30.9	31.7	32.2
6H	31.1	31.8	31.6	32.3	32.9	31.1	31.8	31.6	32.3	32.8
8H	31.4	32.0	31.9	32.5	33.1	31.3	31.9	31.8	32.5	33.0
12H	31.6	32.1	32.1	32.6	33.2	31.5	32.0	32.0	32.6	33.2
12H 4H	30.4	31.2	30.9	31.7	32.2	30.4	31.2	30.9	31.7	32.2
6H	31.2	31.8	31.7	32.3	32.9	31.1	31.7	31.6	32.3	32.8
8H	31.5	32.0	32.0	32.5	33.1	31.4	31.9	31.9	32.5	33.1
Variations with the observer position at spacings(CIE Pub.117):										
S = 1.0H	+ 0.1 / - 0.2					+ 0.1 / - 0.2				
1.5H	+ 0.2 / - 0.3					+ 0.2 / - 0.3				
2.0H	+ 0.2 / - 0.3					+ 0.2 / - 0.4				

CIE Pub.117, 2242 lm Total Lamp Luminous Flux Correct (8log(F/F0) = 2.8)
 Area: 0.005 m2

C Range: 0 - 360DEG
 C Interval: 15.0DEG
 Test Speed: HIGH
 Temperature:25.3°C
 Operators:DAMIN
 Test Date:2023-02-25

Range: 0 - 180DEG
 Interval: 1.0DEG
 Test System:EVERFINE GO-2000B_V1 SYSTEM V2.00.471
 Humidity:65.0%
 Test Distance:4.880m [K=1.0000]
 Remarks:

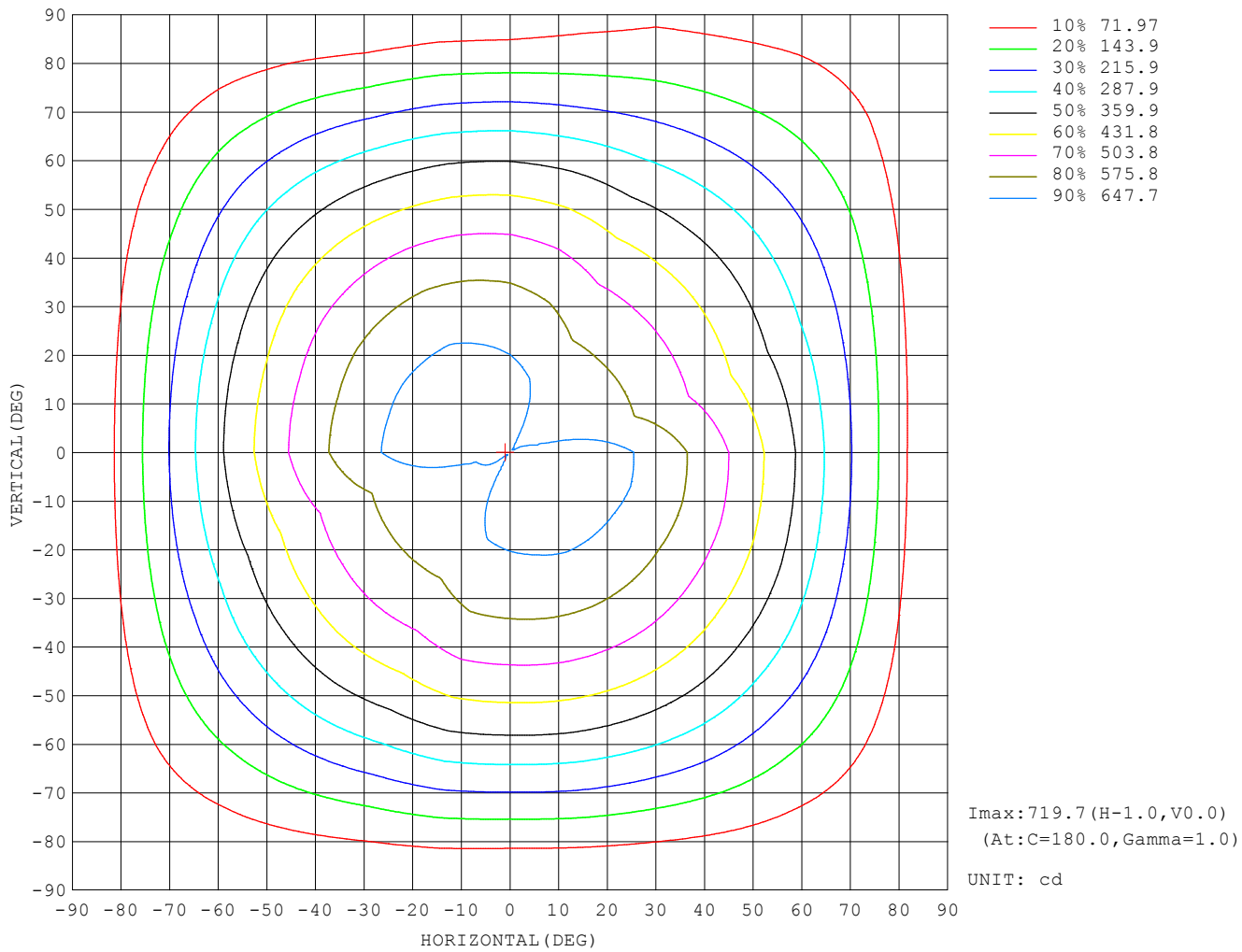
UTILIZATION FACTORS TABLE

REFLECTANCE										
Ceiling	0.8	0.8	0.8	0.7	0.7	0.7	0.5	0.5	0.5	0
Walls	0.7	0.5	0.3	0.7	0.5	0.3	0.7	0.5	0.3	0
Working plane	0.2	0.2	0.2	0.2	0.2	0.2	0.2	0.2	0.2	0
ROOM INDEX	UTILIZATION FACTORS (PERCENT) $k(RI) \times RCR = 5$									
$k = 0.60$	55	43	36	54	42	36	52	42	35	29
0.80	65	53	45	63	52	45	61	51	44	37
1.00	73	61	54	71	61	53	69	62	53	45
1.25	80	69	62	78	68	61	75	66	60	52
1.50	85	75	67	83	74	67	80	71	65	57
2.00	92	83	76	90	82	75	86	79	73	64
2.50	96	88	82	94	86	80	89	83	78	68
3.00	100	92	87	97	91	85	92	87	82	72
4.00	104	98	93	101	96	91	96	92	88	77
5.00	107	101	97	104	99	95	98	95	91	80
ROOM INDEX	UF (total)									Direct
According to DIN EN 13032-2 2004			Suspended				SHRNOM = 1.25			

C Range: 0 - 360DEG
 C Interval: 15.0DEG
 Test Speed: HIGH
 Temperature: 25.3°C
 Operators: DAMIN
 Test Date: 2023-02-25

Range: 0 - 180DEG
 Interval: 1.0DEG
 Test System: EVERFINE GO-2000B_V1 SYSTEM V2.00.471
 Humidity: 65.0%
 Test Distance: 4.880m [K=1.0000]
 Remarks:

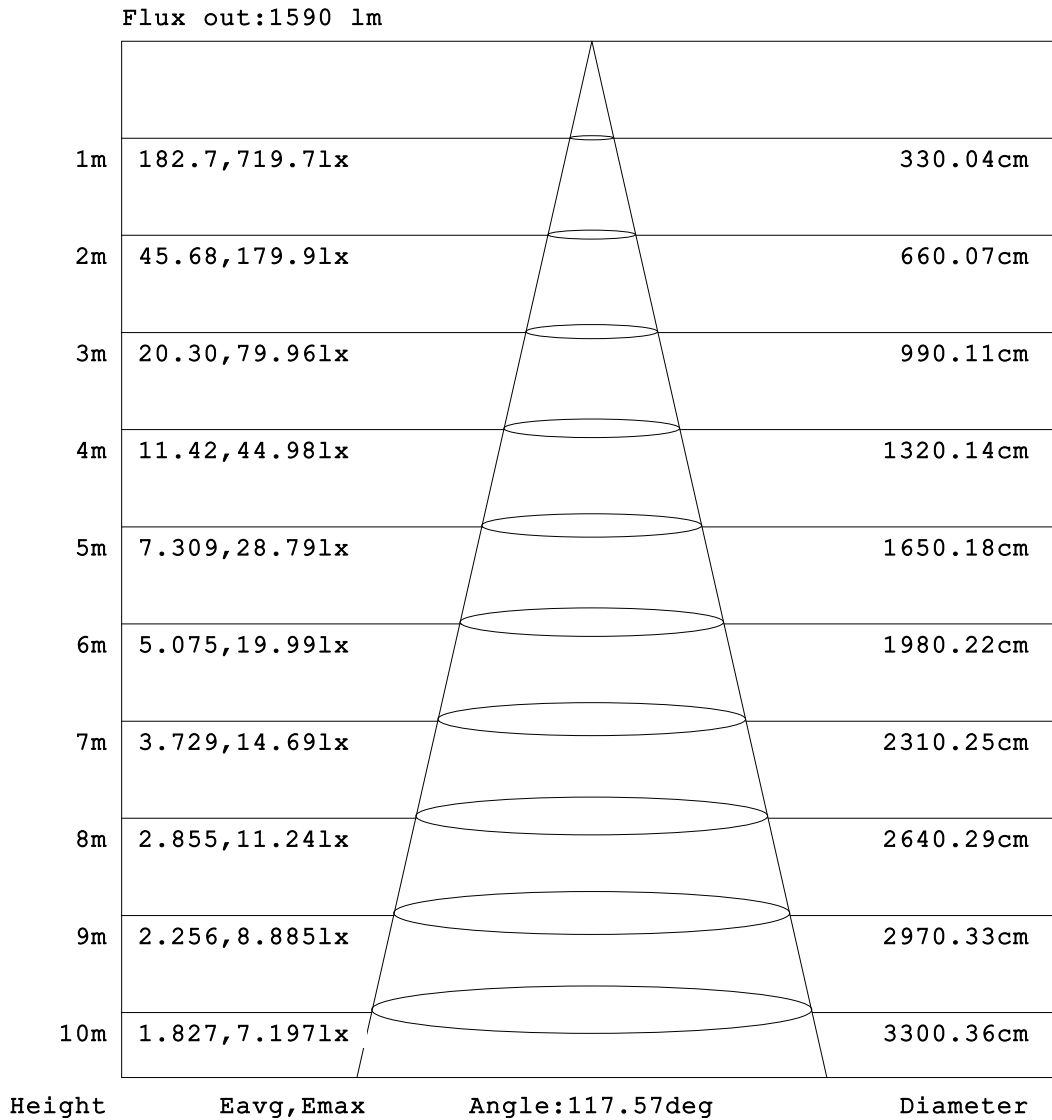
ISOCANDELA DIAGRAM



C Range: 0 - 360DEG
 C Interval: 15.0DEG
 Test Speed: HIGH
 Temperature: 25.3°C
 Operators: DAMIN
 Test Date: 2023-02-25

Range: 0 - 180DEG
 Interval: 1.0DEG
 Test System: EVERFINE GO-2000B_V1 SYSTEM V2.00.471
 Humidity: 65.0%
 Test Distance: 4.880m [K=1.0000]
 Remarks:

AAI Figure

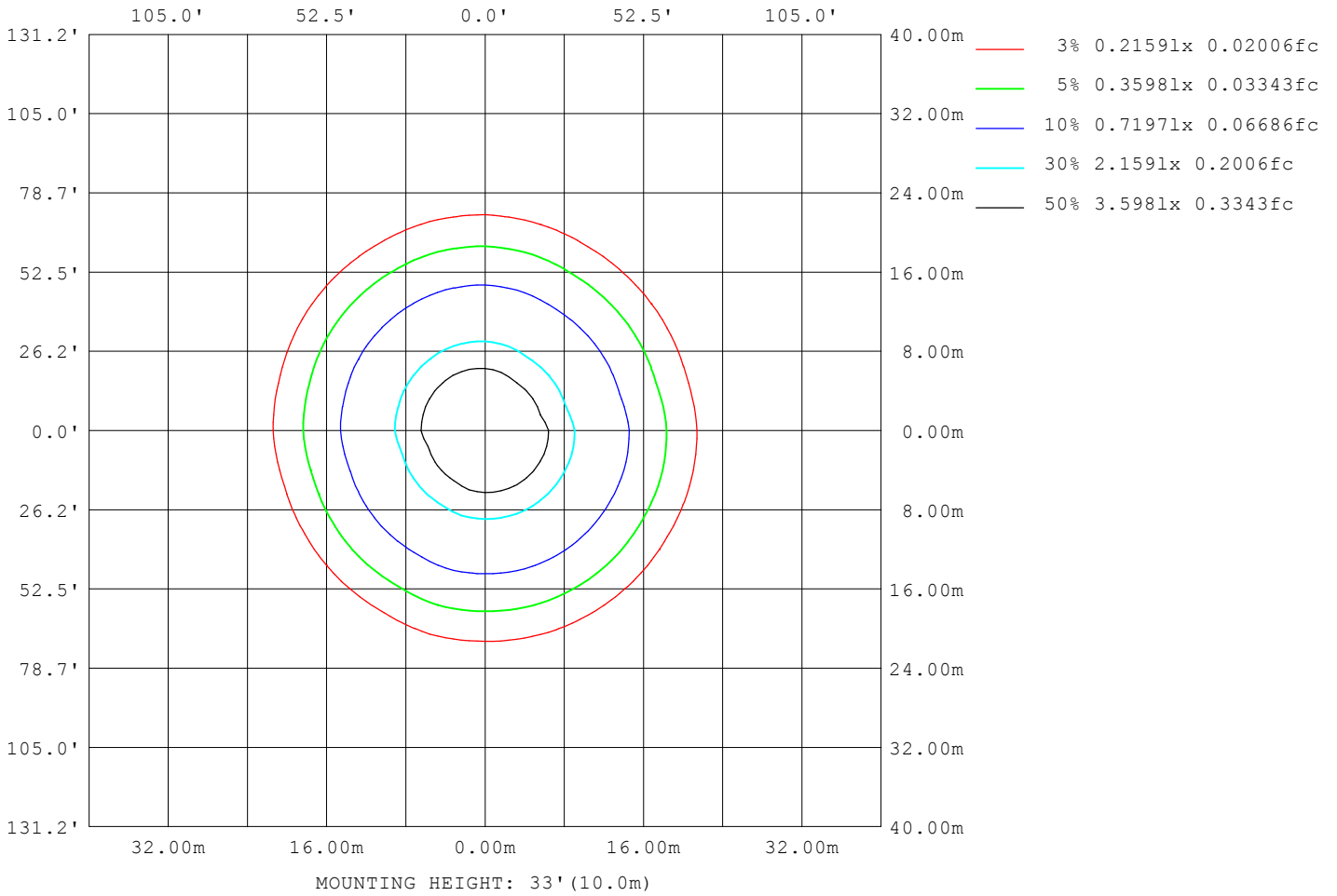


Note:The Curves indicate the illuminated area and the average illumination when the luminaire is at different distance.

C Range: 0 - 360DEG
 C Interval: 15.0DEG
 Test Speed: HIGH
 Temperature:25.3°C
 Operators:DAMIN
 Test Date:2023-02-25

Range: 0 - 180DEG
 Interval: 1.0DEG
 Test System:EVERFINE GO-2000B_V1 SYSTEM V2.00.471
 Humidity:65.0%
 Test Distance:4.880m [K=1.0000]
 Remarks:

ISOLUX DIAGRAM



C Range: 0 - 360DEG
 C Interval: 15.0DEG
 Test Speed: HIGH
 Temperature: 25.3°C
 Operators: DAMIN
 Test Date: 2023-02-25

Range: 0 - 180DEG
 Interval: 1.0DEG
 Test System: EVERFINE GO-2000B_V1 SYSTEM V2.00.471
 Humidity: 65.0%
 Test Distance: 4.880m [K=1.0000]
 Remarks:

LED Avg.L Report

NAME: LED Strip	TYPE: Indoor lighting	WEIGHT: 20g
SPEC.: 2835 180LED	DIM.: 1000*8*1.2MM	SERIAL No.: 20230224063
MFR.: EVERFINE	SUR.: 1000*8*1.2MM	Shielding Angle:

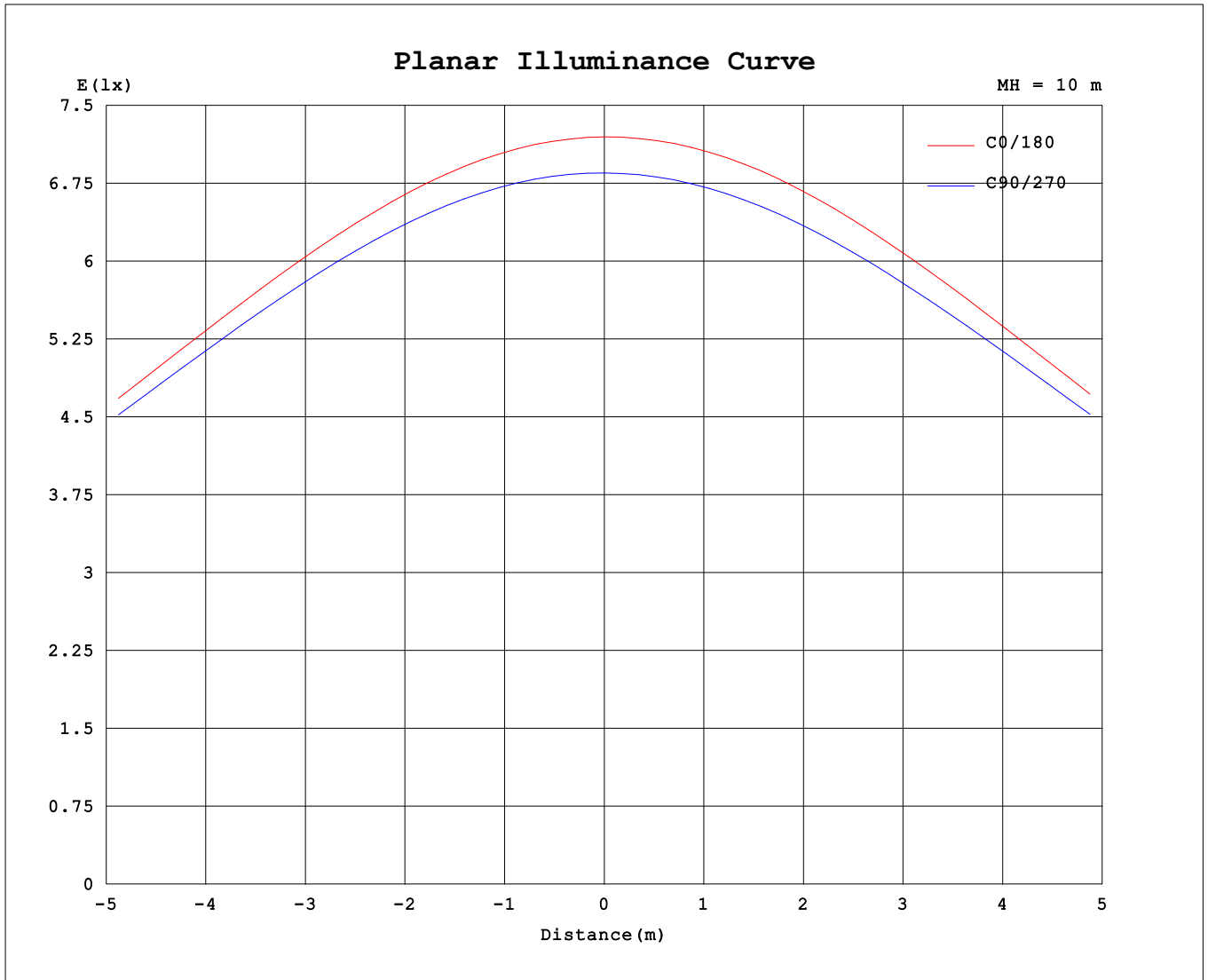
AvgL	cd/m2
L_0~180 (65) av	134204
L_0~180 (75) av	118074
L_0~180 (85) av	84597
L_90~270 (65) av	137051
L_90~270 (75) av	127379
L_90~270 (85) av	124725
L_45 (65) av	132332
L_45 (75) av	123057
L_45 (85) av	120617

Standard: GB/T 29293-2012

C Range: 0 - 360DEG
 C Interval: 15.0DEG
 Test Speed: HIGH
 Temperature:25.3°C
 Operators:DAMIN
 Test Date:2023-02-25

Range: 0 - 180DEG
 Interval: 1.0DEG
 Test System:EVERFINE GO-2000B_V1 SYSTEM V2.00.471
 Humidity:65.0%
 Test Distance:4.880m [K=1.0000]
 Remarks:

Planar Illuminance Curve



C Range: 0 - 360DEG
 C Interval: 15.0DEG
 Test Speed: HIGH
 Temperature: 25.3°C
 Operators: DAMIN
 Test Date: 2023-02-25

Range: 0 - 180DEG
 Interval: 1.0DEG
 Test System: EVERFINE GO-2000B_V1 SYSTEM V2.00.471
 Humidity: 65.0%
 Test Distance: 4.880m [K=1.0000]
 Remarks:

LUMINOUS DISTRIBUTION INTENSITY DATA

Table--1

UNIT: cd

C (DEG) \ □ (DEG)	0	15	30	45	60	75	90	105	120	135	150	165	180	195	210	225	240	255	270
0	720	719	713	709	706	693	685	674	645	646	649	651	720	719	713	709	706	693	685
5	716	716	710	706	702	690	683	673	644	645	648	650	718	716	711	707	704	691	682
10	708	708	702	698	694	683	677	668	639	640	643	644	711	708	704	700	698	685	675
15	694	694	688	684	681	671	665	658	630	631	632	633	698	695	692	689	686	674	664
20	674	675	669	666	663	655	649	642	615	616	617	618	679	676	675	672	670	659	648
25	650	652	646	643	640	633	628	622	596	597	598	598	656	653	653	650	649	639	628
30	621	623	617	615	612	607	602	597	572	573	573	573	627	624	625	623	622	614	604
35	587	589	583	581	579	575	570	567	543	544	543	543	593	590	593	591	591	584	575
40	547	550	545	543	542	539	534	532	509	510	509	509	553	551	555	554	554	549	541
45	504	506	501	500	499	497	493	491	470	471	469	470	509	507	512	512	512	509	502
50	455	457	452	452	452	451	446	445	426	427	425	425	460	458	465	466	466	465	459
55	402	403	399	399	400	399	395	395	378	378	376	377	405	405	412	414	414	415	410
60	345	345	341	342	343	342	339	339	324	324	323	324	346	347	355	358	358	361	358
65	283	284	279	281	282	281	278	279	267	267	266	267	284	284	293	297	298	303	301
70	219	220	215	217	217	218	214	216	206	207	205	208	218	219	229	234	235	242	241
75	154	154	150	151	151	152	149	152	144	145	144	147	151	153	163	169	170	180	180
80	91.5	91.2	88.1	89.2	88.3	89.6	87.9	90.8	85.5	86.2	85.8	88.7	87.8	89.3	99.7	106	107	120	121
85	38.6	38.6	37.2	37.9	37.6	38.1	38.2	40.9	38.4	38.3	38.4	40.8	35.2	36.9	46.1	52.4	53.9	67.5	70.5
90	7.43	7.83	7.84	8.75	8.63	8.71	7.31	11.5	11.8	11.9	12.1	13.8	5.52	6.51	14.1	19.7	20.6	35.2	33.8
95	2.93	2.98	3.00	2.98	2.80	2.67	2.77	4.54	6.44	7.43	8.64	10.3	2.77	2.79	6.88	11.1	11.0	17.9	22.6
100	2.63	2.63	2.67	2.68	2.73	2.79	2.87	2.89	4.99	5.66	7.01	8.62	2.73	2.65	4.81	8.85	9.17	12.1	16.9
105	2.80	2.82	2.93	3.02	3.10	3.15	3.20	3.14	3.41	5.12	5.99	7.54	2.97	2.95	3.17	7.00	7.71	3.31	17.4
110	3.22	3.24	3.35	3.45	3.53	3.59	3.63	3.54	3.34	4.14	5.23	6.53	3.38	3.39	3.41	3.49	4.64	3.65	17.9
115	3.65	3.67	3.77	3.88	3.96	4.02	4.05	3.94	3.69	3.59	4.48	5.45	3.82	3.83	3.86	3.93	4.02	4.06	21.0
120	4.09	4.10	4.21	4.30	4.38	4.44	4.46	4.33	4.04	3.94	3.87	4.16	4.25	4.27	4.30	4.36	4.45	4.49	19.9
125	4.52	4.52	4.64	4.72	4.79	4.85	4.84	4.72	4.48	4.34	4.22	4.21	4.67	4.70	4.73	4.79	4.87	4.91	19.4
130	4.95	4.96	5.07	5.14	5.21	5.26	5.23	5.10	5.60	5.45	4.59	4.58	5.10	5.13	5.15	5.22	5.29	5.32	18.2
135	5.39	5.42	5.50	5.56	5.62	5.66	5.61	5.48	7.41	7.26	5.50	4.95	5.52	5.55	5.57	5.63	5.70	5.71	17.3
140	5.82	5.87	5.93	5.98	6.03	6.05	5.98	5.85	9.84	9.71	8.80	5.33	5.93	5.96	5.98	6.03	6.10	6.10	16.5
145	6.23	6.30	6.35	6.38	6.41	6.43	6.34	6.21	12.8	12.6	12.7	5.70	6.33	6.35	6.37	6.42	6.48	7.85	15.4
150	6.64	6.72	6.75	6.77	6.79	6.80	6.70	6.56	16.1	16.0	16.5	11.3	6.72	6.73	6.75	6.79	6.84	8.63	14.4
155	7.05	7.11	7.12	7.12	7.13	7.14	7.02	6.89	19.8	19.8	20.4	18.1	7.11	7.10	7.11	7.14	7.18	8.55	13.4
160	7.44	7.46	7.46	7.45	7.45	7.45	7.32	7.20	24.0	24.0	24.8	23.8	7.49	7.44	7.45	7.46	7.50	8.83	12.3
165	7.81	7.79	7.76	7.76	7.74	7.74	7.60	7.50	28.7	28.6	29.5	28.9	7.85	7.77	7.78	7.76	7.79	8.73	11.2
170	8.12	8.08	8.04	8.03	8.00	7.99	7.85	7.98	33.6	33.5	34.5	34.3	8.15	8.06	8.06	8.03	8.05	8.33	10.2
175	8.35	8.31	8.26	8.25	8.21	8.20	8.11	9.00	38.5	38.4	39.3	39.0	8.37	8.29	8.28	8.24	8.24	8.14	9.16
180	8.50	8.44	8.39	8.38	8.32	8.32	9.01	10.3	43.3	43.2	43.8	43.5	8.50	8.44	8.40	8.36	8.36	8.22	8.42

C Range: 0 - 360DEG
 C Interval: 15.0DEG
 Test Speed: HIGH
 Temperature:25.3°C
 Operators:DAMIN
 Test Date:2023-02-25

□ Range: 0 - 180DEG
 □ Interval: 1.0DEG
 Test System:EVERFINE GO-2000B_V1 SYSTEM V2.00.471
 Humidity:65.0%
 Test Distance:4.880m [K=1.0000]
 Remarks:

LUMINOUS DISTRIBUTION INTENSITY DATA

Table--2

UNIT: cd

C (DEG) \ □ (DEG)	285	300	315	330	345														
0	674	645	646	649	651														
5	671	641	642	645	647														
10	662	633	633	636	639														
15	650	620	620	623	625														
20	633	603	603	605	607														
25	611	582	581	583	584														
30	586	556	555	556	557														
35	557	527	525	526	526														
40	523	494	491	491	491														
45	486	457	454	453	453														
50	444	417	413	412	411														
55	397	374	369	368	366														
60	346	327	322	321	319														
65	290	278	273	271	269														
70	234	227	223	220	217														
75	178	177	172	168	165														
80	124	128	123	119	114														
85	80.8	87.6	81.6	77.0	67.6														
90	53.3	63.8	57.7	52.3	48.4														
95	49.7	62.0	56.7	52.1	49.0														
100	52.6	66.1	60.2	55.3	52.0														
105	55.4	69.7	63.5	58.6	55.1														
110	58.5	72.1	66.4	61.4	57.8														
115	59.6	73.7	68.5	63.7	60.0														
120	61.2	74.5	69.9	65.5	61.8														
125	60.6	74.8	70.6	66.5	63.0														
130	59.4	74.5	70.8	67.1	63.8														
135	57.8	73.1	70.4	67.0	64.0														
140	55.8	71.4	69.4	66.3	63.8														
145	53.5	68.9	67.8	65.1	63.1														
150	50.7	66.1	65.6	63.4	61.8														
155	47.8	62.9	62.8	61.1	59.9														
160	44.5	59.3	59.7	58.5	57.7														
165	41.8	55.4	56.1	55.3	54.8														
170	38.0	51.2	52.3	51.9	51.5														
175	34.1	46.5	48.1	48.0	47.9														
180	34.0	41.3	43.7	43.7	43.8														

C Range: 0 - 360DEG
 C Interval: 15.0DEG
 Test Speed: HIGH
 Temperature:25.3°C
 Operators:DAMIN
 Test Date:2023-02-25

□ Range: 0 - 180DEG
 □ Interval: 1.0DEG
 Test System:EVERFINE GO-2000B_V1 SYSTEM V2.00.471
 Humidity:65.0%
 Test Distance:4.880m [K=1.0000]
 Remarks: