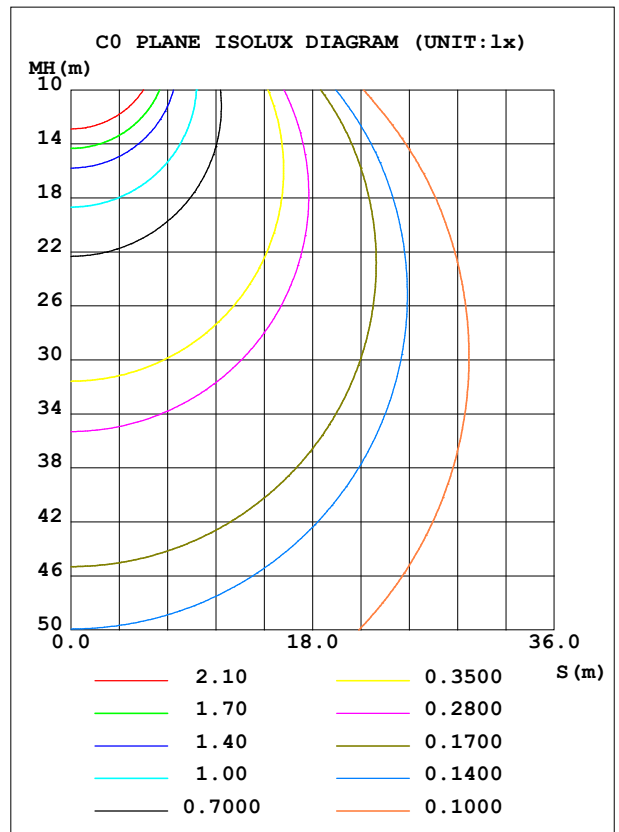
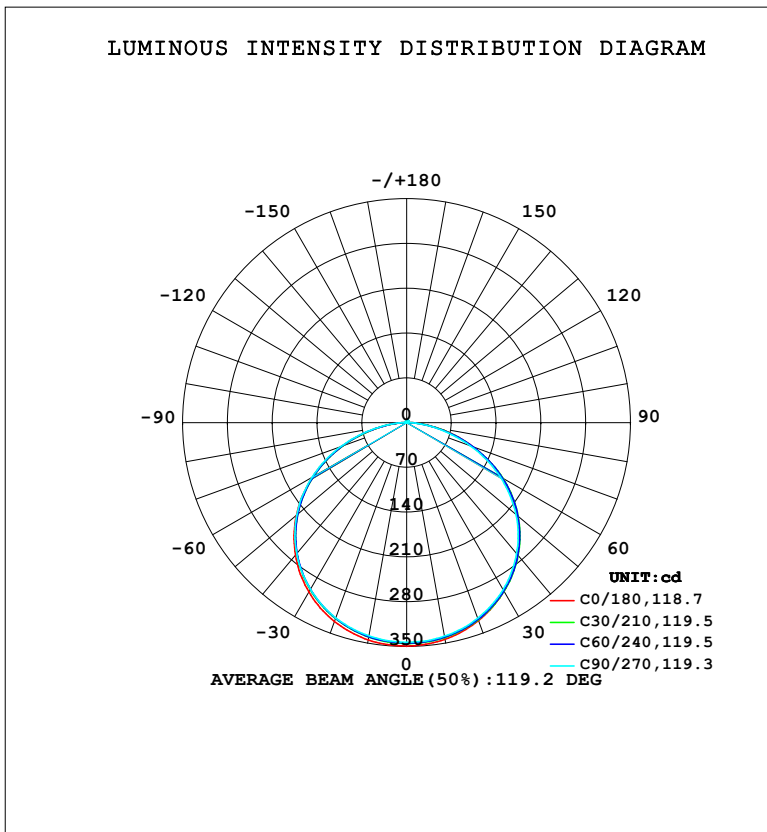


LUMINAIRE PHOTOMETRIC TEST REPORT

NAME: LED Strip	TYPE: Indoor lighting	WEIGHT: 20g
SPEC.: 2835 120LED	DIM.: 500*8*1.2MM	SERIAL No.: 20230224054
MFR.: EVERFINE	SUR.: 500*8*1.2MM	Shielding Angle:

DATA OF LAMP		PHOTOMETRIC DATA			
WW-FMSDB2T28NW168B-24 (WCP) -HR-EP		Imax (cd)	349.0	S/MH (C0/180)	1.30
NOMINAL POWER (W)	8.54893	LOR (%)	100.0	S/MH (C90/270)	1.30
RATED VOLTAGE (V)	DC 24V	TOTAL FLUX (lm)	1077.6	<input type="checkbox"/> UP, DN (C0-180)	0.7,49.2
NOMINAL FLUX (lm)	1077.56	CIE CLASS	DIRECT	<input type="checkbox"/> UP, DN (C180-360)	0.7,49.4
LAMPS INSIDE	1	<input type="checkbox"/> up (%)	1.4	CIBSE SHR NOM	1.50
TEST VOLTAGE (V)	DC 24V	<input type="checkbox"/> down (%)	98.6	CIBSE SHR MAX	1.50



C Range: 0 - 360DEG
 C Interval: 15.0DEG
 Test Speed: HIGH
 Temperature: 25.3°C
 Operators: DAMIN
 Test Date: 2023-02-25

Range: 0 - 180DEG
 Interval: 1.0DEG
 Test System: EVERFINE GO-2000B_V1 SYSTEM V2.00.471
 Humidity: 65.0%
 Test Distance: 4.880m [K=1.0000]
 Remarks:

ZONAL FLUX DIAGRAM

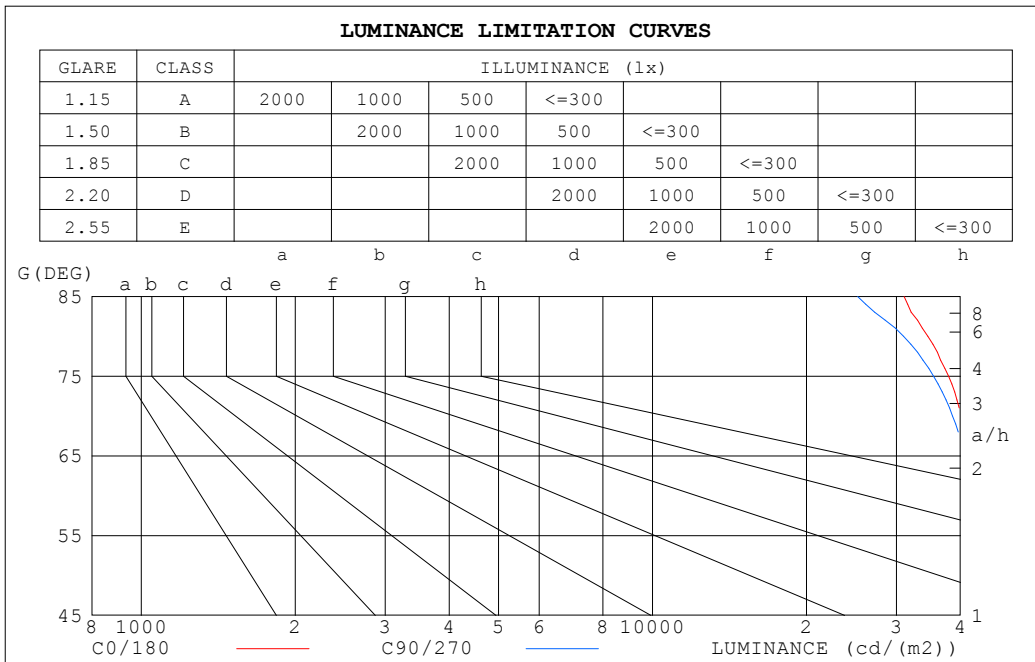
ZONAL FLUX DIAGRAM:

☐	C0	C45	C90	C135	C180	C225	C270	C315	☐	☐ zone	☐ total	%lum,lamp
10	344.0	340.8	339.1	340.1	344.9	339.5	338.6	340.3	0- 10	32.76	32.76	3.04,3.04
20	329.1	327.4	325.3	325.7	330.5	324.9	324.6	326.7	10- 20	94.67	127.4	11.8,11.8
30	304.2	304.3	301.5	301.5	305.7	300.4	300.9	303.3	20- 30	145.7	273.2	25.4,25.4
40	269.6	271.2	267.5	266.6	270.6	266.0	267.4	270.3	30- 40	179.6	452.8	42,42
50	225.5	227.9	223.1	221.1	225.0	221.6	224.0	227.2	40- 50	191.1	643.9	59.8,59.8
60	171.5	174.2	168.6	165.3	169.7	167.3	170.8	174.5	50- 60	177.4	821.3	76.2,76.2
70	109.8	111.0	105.7	102.3	106.5	105.4	109.3	113.1	60- 70	138.2	959.5	89,89
80	48.04	47.72	43.00	38.85	42.56	43.11	46.15	50.35	70- 80	80.05	1040	96.5,96.5
90	5.774	5.679	2.774	3.332	4.053	4.119	3.125	6.813	80- 90	23.21	1063	98.6,98.6
100	1.326	1.723	1.236	1.277	1.359	1.311	1.301	1.401	90-100	2.174	1065	98.8,98.8
110	1.604	1.625	1.656	1.631	1.682	1.707	1.734	1.677	100-110	1.555	1066	99,99
120	2.014	2.050	2.104	2.059	2.113	2.143	2.189	2.111	110-120	1.863	1068	99.1,99.1
130	2.436	2.483	2.537	2.486	2.531	2.567	2.620	2.535	120-130	2.068	1070	99.3,99.3
140	2.851	2.914	2.953	2.901	2.933	2.970	3.024	2.944	130-140	2.111	1073	99.5,99.5
150	3.258	3.315	3.335	3.294	3.315	3.348	3.391	3.333	140-150	1.963	1074	99.7,99.7
160	3.650	3.663	3.670	3.650	3.689	3.678	3.710	3.665	150-160	1.616	1076	99.9,99.9
170	3.971	3.956	3.949	3.951	4.004	3.957	3.973	3.947	160-170	1.079	1077	100,100
180	4.165	4.130	4.126	4.126	4.166	4.127	4.128	4.127	170-180	0.3849	1078	100,100
DEG	LUMINOUS INTENSITY:cd									UNIT:lm		

C Range: 0 - 360DEG
 C Interval: 15.0DEG
 Test Speed: HIGH
 Temperature:25.3°C
 Operators:DAMIN
 Test Date:2023-02-25

☐ Range: 0 - 180DEG
 ☐ Interval: 1.0DEG
 Test System:EVERFINE GO-2000B_V1 SYSTEM V2.00.471
 Humidity:65.0%
 Test Distance:4.880m [K=1.0000]
 Remarks:

LUMINANCE LIMITATION CURVES



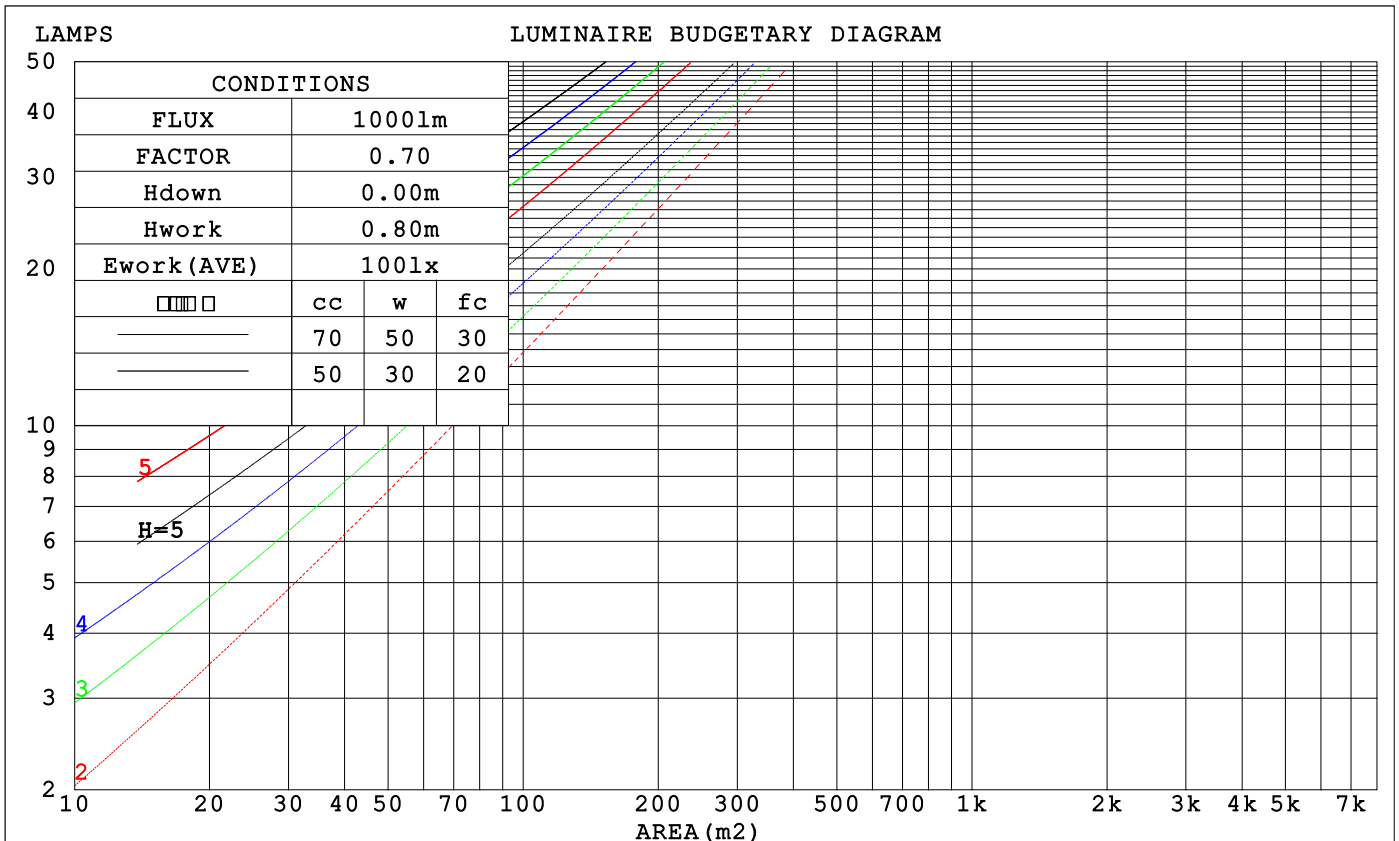
LUMINANCE cd/(m2)		
G (DEG)	C0/180	C90/270
85	31068	25202
80	34578	30955
75	37943	35487
70	40145	38617
65	41421	40830
60	42872	42157
55	43607	42952
50	43857	43390
45	43969	43599

C Range: 0 - 360DEG
 C Interval: 15.0DEG
 Test Speed: HIGH
 Temperature: 25.3°C
 Operators: DAMIN
 Test Date: 2023-02-25

Range: 0 - 180DEG
 Interval: 1.0DEG
 Test System: EVERFINE GO-2000B_V1 SYSTEM V2.00.471
 Humidity: 65.0%
 Test Distance: 4.880m [K=1.0000]
 Remarks:

CU AND LUMINAIRE BUDGETARY ESTIMATE DIAGRAM

□cc	80%			70%			50%			30%			10%			0
□w	50%	30%	10%	50%	30%	10%	50%	30%	10%	50%	30%	10%	50%	30%	10%	0
□fc	20%			20%			20%			20%			20%			0
RCR	RCR:Room Cavity Ratio			Coefficients of Utilization(CU)												
0.0	1.19	1.19	1.19	1.16	1.16	1.16	1.10	1.10	1.10	1.05	1.05	1.05	1.01	1.01	1.01	.99
1.0	1.03	.99	.95	1.01	.97	.93	.96	.93	.90	.92	.89	.87	.88	.86	.84	.82
2.0	.89	.82	.77	.87	.81	.76	.84	.78	.74	.80	.76	.72	.77	.73	.70	.68
3.0	.78	.70	.63	.77	.69	.63	.73	.67	.61	.70	.65	.60	.68	.63	.59	.56
4.0	.69	.60	.53	.68	.59	.53	.65	.58	.52	.62	.56	.51	.60	.55	.50	.48
5.0	.62	.52	.46	.60	.52	.45	.58	.50	.45	.56	.49	.44	.54	.48	.43	.41
6.0	.55	.46	.40	.54	.46	.39	.52	.45	.39	.50	.44	.38	.49	.43	.38	.36
7.0	.50	.41	.35	.49	.41	.35	.47	.40	.34	.46	.39	.34	.44	.38	.34	.32
8.0	.46	.37	.31	.45	.37	.31	.43	.36	.31	.42	.35	.30	.41	.35	.30	.28
9.0	.42	.33	.28	.41	.33	.28	.40	.33	.27	.39	.32	.27	.38	.31	.27	.25
10.0	.38	.30	.25	.38	.30	.25	.37	.30	.25	.36	.29	.25	.35	.29	.24	.23



C Range: 0 - 360DEG
 C Interval: 15.0DEG
 Test Speed: HIGH
 Temperature:25.3°C
 Operators:DAMIN
 Test Date:2023-02-25

□ Range: 0 - 180DEG
 □ Interval: 1.0DEG
 Test System:EVERFINE GO-2000B_V1 SYSTEM V2.00.471
 Humidity:65.0%
 Test Distance:4.880m [K=1.0000]
 Remarks:

WEC AND CCEC

□cc	80%			70%			50%			30%			10%			0
□w	50%	30%	10%	50%	30%	10%	50%	30%	10%	50%	30%	10%	50%	30%	10%	0
□fc	20%			20%			20%			20%			20%			0
RCR	RCR:Room Cavity Ratio						Wall Exitance Coefficients(WEC)									
0.0	.318	.181	.057	.310	.177	.056	.296	.170	.054	.283	.163	.052	.271	.157	.051	
1.0	.298	.163	.050	.291	.160	.049	.279	.155	.048	.267	.150	.047	.257	.145	.046	
2.0	.275	.146	.044	.269	.144	.043	.258	.140	.042	.248	.136	.042	.238	.132	.041	
3.0	.253	.132	.039	.248	.130	.038	.238	.126	.038	.229	.123	.037	.220	.120	.036	
4.0	.234	.119	.034	.229	.118	.034	.220	.115	.034	.212	.112	.033	.204	.109	.033	
5.0	.216	.108	.031	.212	.107	.031	.204	.105	.030	.197	.102	.030	.190	.100	.030	
6.0	.201	.099	.028	.197	.098	.028	.190	.096	.028	.184	.094	.027	.178	.092	.027	
7.0	.188	.092	.026	.184	.091	.026	.178	.089	.025	.172	.087	.025	.166	.085	.025	
8.0	.176	.085	.024	.173	.084	.024	.167	.083	.023	.162	.081	.023	.157	.080	.023	
9.0	.165	.079	.022	.162	.078	.022	.157	.077	.022	.152	.076	.022	.148	.074	.021	
10.0	.165	.079	.022	.162	.078	.022	.157	.077	.022	.152	.076	.022	.148	.074	.021	

□cc	80%			70%			50%			30%			10%			0
□w	50%	30%	10%	50%	30%	10%	50%	30%	10%	50%	30%	10%	50%	30%	10%	0
□fc	20%			20%			20%			20%			20%			0
RCR	RCR:Room Cavity Ratio						Ceiling Cavity Exitance Coefficients(CCEC)									
0.0	.201	.201	.201	.172	.172	.172	.117	.117	.117	.067	.067	.067	.022	.022	.022	
1.0	.191	.167	.144	.164	.143	.124	.112	.098	.086	.064	.057	.050	.021	.018	.016	
2.0	.184	.143	.108	.157	.123	.093	.108	.085	.065	.062	.049	.038	.020	.016	.012	
3.0	.176	.125	.084	.151	.108	.073	.104	.075	.051	.060	.044	.030	.019	.014	.010	
4.0	.169	.112	.068	.145	.097	.059	.099	.067	.042	.058	.039	.025	.019	.013	.008	
5.0	.161	.101	.057	.138	.088	.050	.095	.061	.035	.055	.036	.021	.018	.012	.007	
6.0	.154	.093	.050	.132	.081	.043	.091	.056	.031	.053	.033	.018	.017	.011	.006	
7.0	.147	.086	.044	.127	.075	.038	.087	.052	.027	.051	.031	.016	.016	.010	.005	
8.0	.141	.081	.039	.121	.070	.034	.084	.049	.024	.049	.029	.014	.016	.009	.005	
9.0	.134	.076	.036	.116	.066	.031	.080	.046	.022	.047	.027	.013	.015	.009	.004	
10.0	.129	.071	.033	.111	.062	.029	.077	.044	.021	.045	.026	.012	.015	.008	.004	

C Range: 0 - 360DEG
 C Interval: 15.0DEG
 Test Speed: HIGH
 Temperature:25.3°C
 Operators:DAMIN
 Test Date:2023-02-25

□ Range: 0 - 180DEG
 □ Interval: 1.0DEG
 Test System:EVERFINE GO-2000B_V1 SYSTEM V2.00.471
 Humidity:65.0%
 Test Distance:4.880m [K=1.0000]
 Remarks:

UGR(Unified Glare Rating) Table

ceiling/cavity	0.7	0.7	0.5	0.5	0.3	0.7	0.7	0.5	0.5	0.3
walls	0.5	0.3	0.5	0.3	0.3	0.5	0.3	0.5	0.3	0.3
working plane	0.2	0.2	0.2	0.2	0.2	0.2	0.2	0.2	0.2	0.2
Room dimensions	Viewed crosswise					Viewed endwise				
x = 2H y = 2H	25.8	27.4	26.1	27.6	27.8	25.8	27.3	26.1	27.5	27.8
3H	27.4	28.8	27.7	29.1	29.4	27.4	28.8	27.7	29.0	29.3
4H	28.1	29.4	28.4	29.7	30.0	28.0	29.3	28.3	29.6	29.9
6H	28.6	29.8	28.9	30.1	30.4	28.4	29.6	28.7	29.9	30.3
8H	28.7	29.9	29.1	30.2	30.6	28.5	29.7	28.9	30.0	30.3
12H	28.8	30.0	29.2	30.3	30.6	28.6	29.7	28.9	30.0	30.4
4H 2H	26.5	27.8	26.8	28.1	28.4	26.4	27.8	26.8	28.1	28.3
3H	28.2	29.4	28.6	29.7	30.1	28.2	29.4	28.6	29.7	30.0
4H	29.0	30.1	29.4	30.5	30.8	28.9	30.0	29.3	30.4	30.7
6H	29.6	30.6	30.1	31.0	31.4	29.5	30.4	29.9	30.8	31.2
8H	29.8	30.7	30.3	31.1	31.5	29.6	30.5	30.1	30.9	31.3
12H	30.0	30.8	30.4	31.2	31.7	29.7	30.6	30.2	31.0	31.4
8H 4H	29.3	30.2	29.7	30.6	31.0	29.2	30.1	29.7	30.5	30.9
6H	30.1	30.8	30.5	31.2	31.7	29.9	30.7	30.4	31.1	31.5
8H	30.4	31.0	30.8	31.5	32.0	30.2	30.8	30.6	31.3	31.8
12H	30.6	31.2	31.1	31.6	32.1	30.3	30.9	30.8	31.4	31.9
12H 4H	29.3	30.1	29.8	30.5	31.0	29.2	30.1	29.7	30.5	30.9
6H	30.1	30.8	30.6	31.2	31.7	30.0	30.6	30.5	31.1	31.6
8H	30.5	31.0	31.0	31.5	32.0	30.3	30.8	30.8	31.3	31.8
Variations with the observer position at spacings(CIE Pub.117):										
S = 1.0H	+ 0.1 / - 0.2					+ 0.1 / - 0.2				
1.5H	+ 0.2 / - 0.3					+ 0.2 / - 0.3				
2.0H	+ 0.2 / - 0.4					+ 0.2 / - 0.4				

CIE Pub.117, 1078 lm Total Lamp Luminous Flux Correct (8log(F/F0) = 0.3)
 Area: 0.008 m2

C Range: 0 - 360DEG
 C Interval: 15.0DEG
 Test Speed: HIGH
 Temperature:25.3°C
 Operators:DAMIN
 Test Date:2023-02-25

Range: 0 - 180DEG
 Interval: 1.0DEG
 Test System:EVERFINE GO-2000B_V1 SYSTEM V2.00.471
 Humidity:65.0%
 Test Distance:4.880m [K=1.0000]
 Remarks:

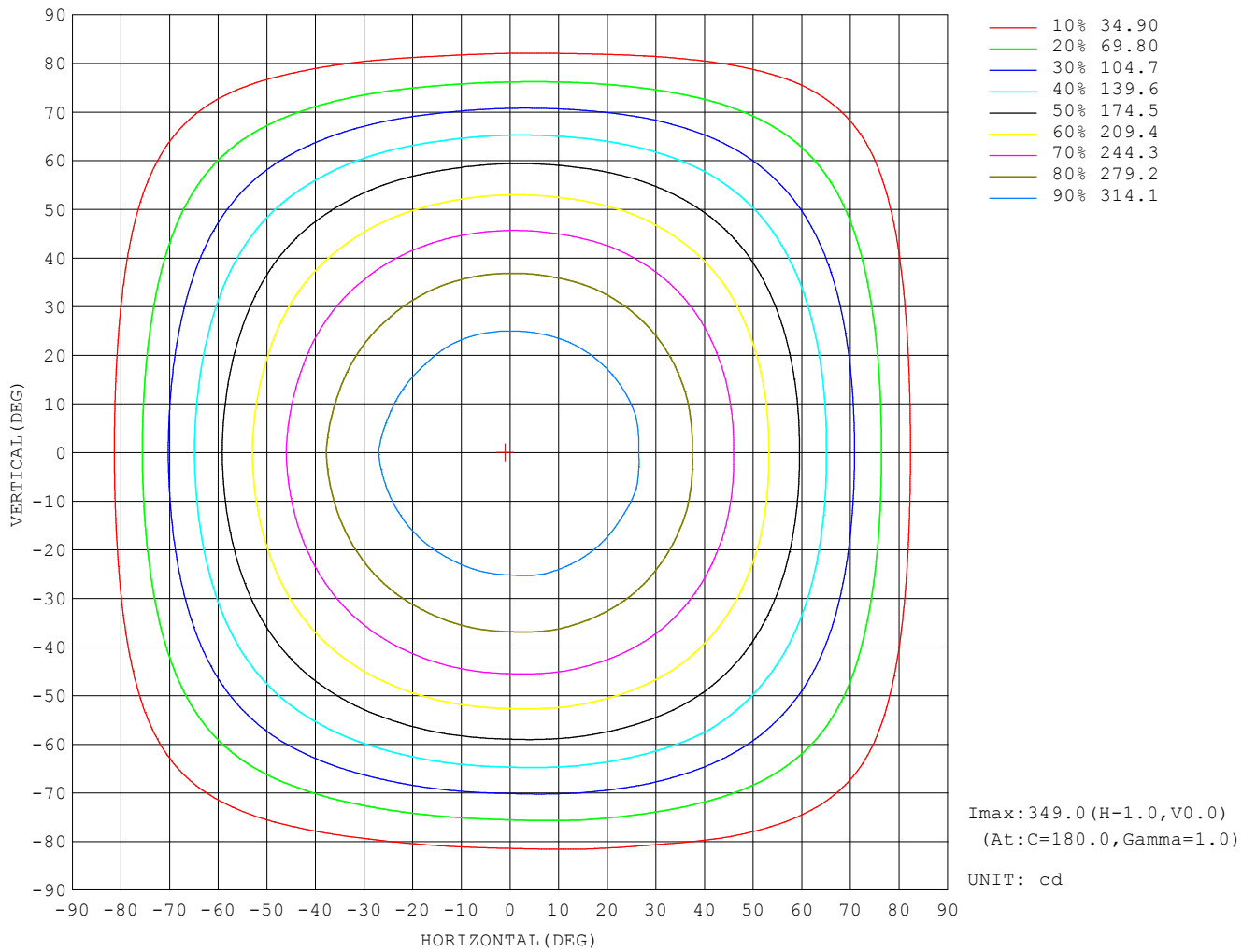
UTILIZATION FACTORS TABLE

REFLECTANCE										
Ceiling	0.8	0.8	0.8	0.7	0.7	0.7	0.5	0.5	0.5	0
Walls	0.7	0.5	0.3	0.7	0.5	0.3	0.7	0.5	0.3	0
Working plane	0.2	0.2	0.2	0.2	0.2	0.2	0.2	0.2	0.2	0
ROOM INDEX	UTILIZATION FACTORS (PERCENT) $k(RI) \times RCR = 5$									
$k = 0.60$	56	44	37	55	44	37	54	43	37	30
0.80	66	54	47	65	54	46	63	53	46	39
1.00	74	63	56	73	62	55	71	64	55	47
1.25	82	71	64	80	70	63	77	69	62	55
1.50	87	77	69	85	76	69	82	74	68	60
2.00	94	85	78	92	84	77	88	81	76	68
2.50	98	90	84	96	88	83	92	85	81	72
3.00	101	94	88	99	93	87	95	89	85	76
4.00	105	100	95	103	98	93	98	94	90	81
5.00	108	103	99	105	101	97	101	97	94	84
ROOM INDEX	UF (total)									Direct
According to DIN EN 13032-2 2004			Suspended				SHRNOM = 1.25			

C Range: 0 - 360DEG
 C Interval: 15.0DEG
 Test Speed: HIGH
 Temperature: 25.3°C
 Operators: DAMIN
 Test Date: 2023-02-25

Range: 0 - 180DEG
 Interval: 1.0DEG
 Test System: EVERFINE GO-2000B_V1 SYSTEM V2.00.471
 Humidity: 65.0%
 Test Distance: 4.880m [K=1.0000]
 Remarks:

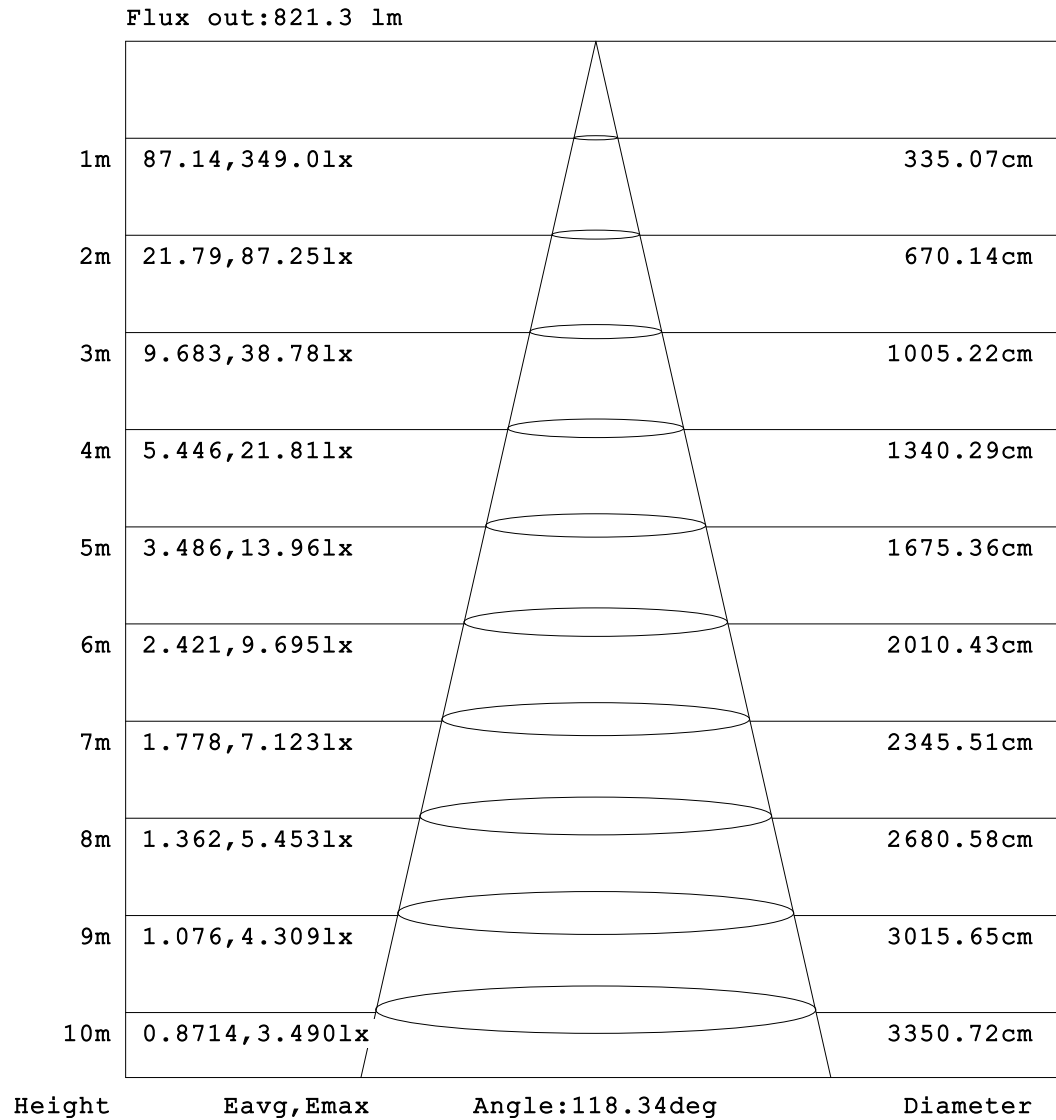
ISOCANDELA DIAGRAM



C Range: 0 - 360DEG
 C Interval: 15.0DEG
 Test Speed: HIGH
 Temperature: 25.3°C
 Operators: DAMIN
 Test Date: 2023-02-25

Range: 0 - 180DEG
 Interval: 1.0DEG
 Test System: EVERFINE GO-2000B_V1 SYSTEM V2.00.471
 Humidity: 65.0%
 Test Distance: 4.880m [K=1.0000]
 Remarks:

AAI Figure

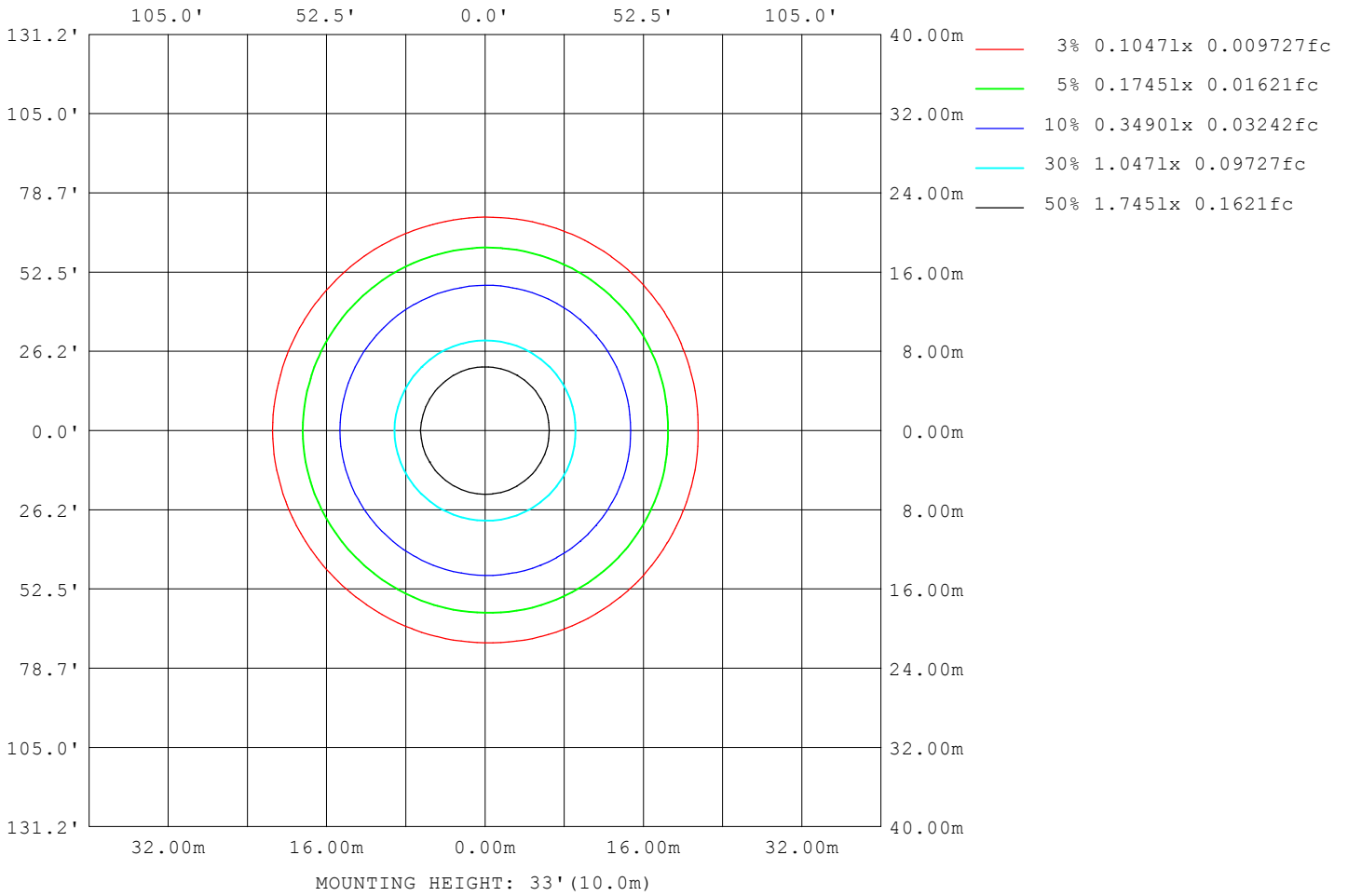


Note:The Curves indicate the illuminated area and the average illumination when the luminaire is at different distance.

C Range: 0 - 360DEG
 C Interval: 15.0DEG
 Test Speed: HIGH
 Temperature:25.3°C
 Operators:DAMIN
 Test Date:2023-02-25

Range: 0 - 180DEG
 Interval: 1.0DEG
 Test System:EVERFINE GO-2000B_V1 SYSTEM V2.00.471
 Humidity:65.0%
 Test Distance:4.880m [K=1.0000]
 Remarks:

ISOLUX DIAGRAM



C Range: 0 - 360DEG
 C Interval: 15.0DEG
 Test Speed: HIGH
 Temperature: 25.3°C
 Operators: DAMIN
 Test Date: 2023-02-25

Range: 0 - 180DEG
 Interval: 1.0DEG
 Test System: EVERFINE GO-2000B_V1 SYSTEM V2.00.471
 Humidity: 65.0%
 Test Distance: 4.880m [K=1.0000]
 Remarks:

LED Avg.L Report

NAME: LED Strip	TYPE: Indoor lighting	WEIGHT: 20g
SPEC.: 2835 120LED	DIM.: 500*8*1.2MM	SERIAL No.: 20230224054
MFR.: EVERFINE	SUR.: 500*8*1.2MM	Shielding Angle:

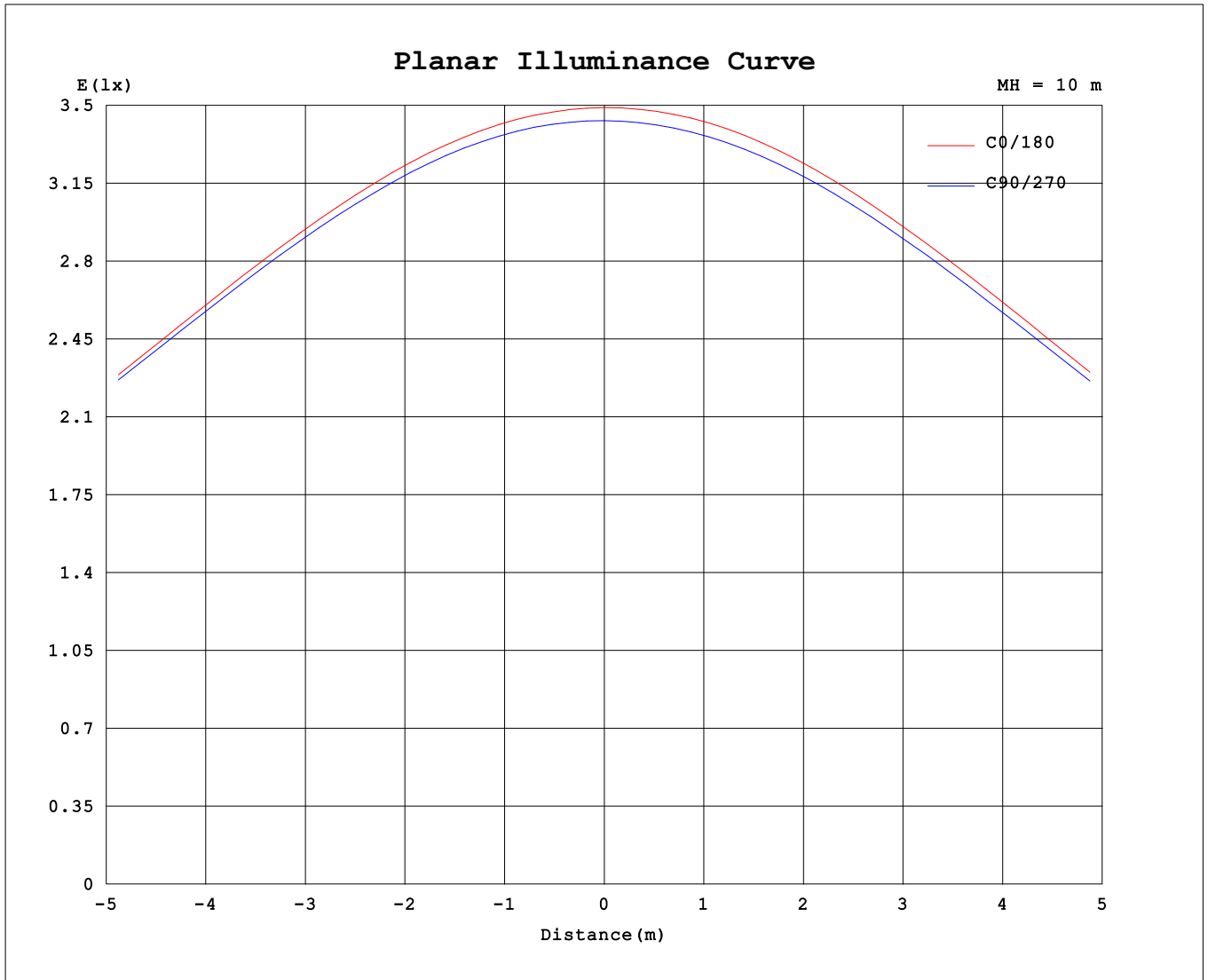
AvgL	cd/m2
L_0~180 (65) av	41248
L_0~180 (75) av	36783
L_0~180 (85) av	28001
L_90~270 (65) av	41254
L_90~270 (75) av	36360
L_90~270 (85) av	27213
L_45 (65) av	41453
L_45 (75) av	36404
L_45 (85) av	28312

Standard: GB/T 29293-2012

C Range: 0 - 360DEG
 C Interval: 15.0DEG
 Test Speed: HIGH
 Temperature:25.3℃
 Operators:DAMIN
 Test Date:2023-02-25

Range: 0 - 180DEG
 Interval: 1.0DEG
 Test System:EVERFINE GO-2000B_V1 SYSTEM V2.00.471
 Humidity:65.0%
 Test Distance:4.880m [K=1.0000]
 Remarks:

Planar Illuminance Curve



C Range: 0 - 360DEG
 C Interval: 15.0DEG
 Test Speed: HIGH
 Temperature: 25.3°C
 Operators: DAMIN
 Test Date: 2023-02-25

Range: 0 - 180DEG
 Interval: 1.0DEG
 Test System: EVERFINE GO-2000B_V1 SYSTEM V2.00.471
 Humidity: 65.0%
 Test Distance: 4.880m [K=1.0000]
 Remarks:

LUMINOUS DISTRIBUTION INTENSITY DATA

Table--1

UNIT: cd

C (DEG) \ □ (DEG)	0	15	30	45	60	75	90	105	120	135	150	165	180	195	210	225	240	255	270
0	349	348	345	344	344	344	343	343	344	345	346	349	349	348	345	344	344	344	343
5	348	347	344	344	344	343	342	342	343	344	345	347	348	347	344	343	343	343	342
10	344	344	341	341	341	340	339	339	339	340	342	344	345	343	340	339	340	339	339
15	338	338	336	335	335	335	333	333	333	334	336	337	339	337	334	333	334	333	333
20	329	330	328	327	327	327	325	325	325	326	327	329	331	328	326	325	325	325	325
25	318	319	317	317	317	316	315	314	314	315	316	318	319	317	315	314	314	314	314
30	304	306	304	304	304	303	302	301	301	301	302	304	306	303	301	300	301	301	301
35	288	290	289	289	288	288	286	285	285	285	286	288	289	287	285	284	285	285	285
40	270	272	271	271	271	270	268	267	266	267	267	269	271	268	267	266	266	267	267
45	249	251	251	251	250	249	247	246	245	245	246	247	249	247	246	245	246	246	247
50	226	227	228	228	227	226	223	222	221	221	222	223	225	223	222	222	222	223	224
55	200	202	202	202	201	200	197	196	195	194	195	197	198	197	196	196	196	197	199
60	171	173	174	174	173	171	169	167	166	165	166	168	170	168	168	167	168	169	171
65	140	142	143	144	143	141	138	137	135	134	136	137	139	138	138	137	138	139	141
70	110	111	110	111	110	109	106	105	102	102	103	105	106	106	106	105	107	107	109
75	78.6	79.5	78.6	77.8	78.0	76.8	73.5	71.7	70.0	69.4	70.5	71.7	73.8	73.0	73.4	73.5	74.6	75.3	77.1
80	48.0	48.3	48.1	47.7	45.5	45.7	43.0	41.4	39.6	38.9	39.7	40.8	42.6	42.3	42.8	43.1	44.1	44.7	46.2
85	21.7	22.4	21.7	21.8	20.1	18.6	17.6	16.7	15.6	15.3	15.7	16.6	17.4	17.2	18.0	18.1	19.0	18.9	20.4
90	5.77	5.97	5.69	5.68	5.15	4.67	2.77	3.64	3.30	3.33	4.12	4.45	4.05	3.94	4.18	4.12	4.41	4.13	3.12
95	1.61	1.64	1.69	1.92	2.11	1.39	1.17	1.27	1.65	1.47	1.77	1.92	1.52	1.58	1.68	1.86	1.43	1.24	1.19
100	1.33	1.34	1.41	1.72	1.38	1.26	1.24	1.26	1.24	1.28	1.26	1.27	1.36	1.36	1.34	1.31	1.31	1.31	1.30
105	1.41	1.43	1.48	1.47	1.42	1.44	1.42	1.43	1.42	1.42	1.40	1.40	1.47	1.47	1.48	1.48	1.50	1.49	1.50
110	1.60	1.61	1.61	1.63	1.63	1.65	1.66	1.65	1.63	1.63	1.60	1.61	1.68	1.69	1.70	1.71	1.72	1.72	1.73
115	1.81	1.81	1.81	1.83	1.85	1.88	1.88	1.87	1.85	1.85	1.82	1.82	1.90	1.90	1.92	1.93	1.94	1.95	1.97
120	2.01	2.02	2.03	2.05	2.06	2.10	2.10	2.09	2.07	2.06	2.03	2.03	2.11	2.12	2.14	2.14	2.16	2.17	2.19
125	2.22	2.23	2.24	2.27	2.28	2.31	2.32	2.31	2.28	2.27	2.24	2.24	2.32	2.33	2.35	2.36	2.38	2.39	2.41
130	2.44	2.45	2.46	2.48	2.50	2.53	2.54	2.53	2.50	2.49	2.45	2.45	2.53	2.54	2.56	2.57	2.59	2.60	2.62
135	2.65	2.67	2.68	2.70	2.71	2.74	2.75	2.74	2.71	2.70	2.67	2.65	2.74	2.74	2.76	2.78	2.79	2.81	2.83
140	2.85	2.89	2.89	2.91	2.92	2.95	2.95	2.95	2.91	2.90	2.87	2.86	2.93	2.94	2.96	2.97	2.99	3.01	3.02
145	3.05	3.10	3.10	3.12	3.12	3.14	3.15	3.15	3.11	3.10	3.07	3.06	3.13	3.13	3.15	3.16	3.18	3.20	3.21
150	3.26	3.31	3.30	3.32	3.32	3.33	3.34	3.34	3.31	3.29	3.26	3.26	3.32	3.32	3.34	3.35	3.37	3.38	3.39
155	3.46	3.50	3.49	3.50	3.50	3.51	3.51	3.52	3.49	3.48	3.45	3.45	3.50	3.49	3.51	3.52	3.54	3.55	3.56
160	3.65	3.67	3.66	3.66	3.66	3.67	3.67	3.68	3.66	3.65	3.62	3.62	3.69	3.66	3.68	3.68	3.70	3.71	3.71
165	3.82	3.83	3.81	3.82	3.81	3.82	3.82	3.83	3.81	3.81	3.79	3.79	3.86	3.81	3.83	3.83	3.85	3.85	3.85
170	3.97	3.97	3.95	3.96	3.95	3.96	3.95	3.96	3.95	3.95	3.93	3.94	4.00	3.95	3.96	3.96	3.97	3.97	3.97
175	4.09	4.09	4.06	4.07	4.05	4.07	4.05	4.07	4.05	4.06	4.05	4.07	4.11	4.07	4.07	4.06	4.07	4.07	4.07
180	4.17	4.15	4.13	4.13	4.13	4.13	4.13	4.13	4.13	4.13	4.12	4.13	4.17	4.14	4.14	4.13	4.13	4.13	4.13

C Range: 0 - 360DEG
 C Interval: 15.0DEG
 Test Speed: HIGH
 Temperature:25.3°C
 Operators:DAMIN
 Test Date:2023-02-25

□ Range: 0 - 180DEG
 □ Interval: 1.0DEG
 Test System:EVERFINE GO-2000B_V1 SYSTEM V2.00.471
 Humidity:65.0%
 Test Distance:4.880m [K=1.0000]
 Remarks:

LUMINOUS DISTRIBUTION INTENSITY DATA

Table--2

UNIT: cd

C (DEG) \ □ (DEG)	285	300	315	330	345														
0	343	344	345	346	349														
5	342	343	344	345	348														
10	339	339	340	342	344														
15	333	334	335	336	338														
20	325	326	327	328	330														
25	314	315	316	317	319														
30	301	303	303	304	305														
35	286	287	288	289	289														
40	268	270	270	271	271														
45	248	249	250	250	250														
50	225	227	227	228	227														
55	200	202	202	202	201														
60	172	174	174	175	173														
65	142	144	145	144	142														
70	111	113	113	112	111														
75	79.0	80.6	80.9	80.8	80.2														
80	47.5	48.9	50.4	50.3	49.5														
85	21.1	22.8	23.8	24.3	23.4														
90	1.97	5.00	6.81	6.84	6.67														
95	1.34	1.63	1.84	1.80	1.78														
100	1.31	1.34	1.40	1.42	1.41														
105	1.48	1.48	1.48	1.49	1.49														
110	1.71	1.70	1.68	1.68	1.68														
115	1.93	1.92	1.89	1.89	1.89														
120	2.16	2.14	2.11	2.10	2.10														
125	2.37	2.35	2.32	2.32	2.31														
130	2.59	2.57	2.54	2.53	2.52														
135	2.79	2.77	2.75	2.74	2.73														
140	2.99	2.97	2.94	2.94	2.94														
145	3.18	3.16	3.14	3.14	3.15														
150	3.37	3.35	3.33	3.33	3.35														
155	3.54	3.52	3.51	3.51	3.52														
160	3.69	3.68	3.67	3.68	3.68														
165	3.83	3.83	3.81	3.83	3.83														
170	3.96	3.96	3.95	3.96	3.97														
175	4.06	4.07	4.05	4.07	4.07														
180	4.13	4.13	4.13	4.13	4.13														

C Range: 0 - 360DEG
 C Interval: 15.0DEG
 Test Speed: HIGH
 Temperature:25.3°C
 Operators:DAMIN
 Test Date:2023-02-25

□ Range: 0 - 180DEG
 □ Interval: 1.0DEG
 Test System:EVERFINE GO-2000B_V1 SYSTEM V2.00.471
 Humidity:65.0%
 Test Distance:4.880m [K=1.0000]
 Remarks: