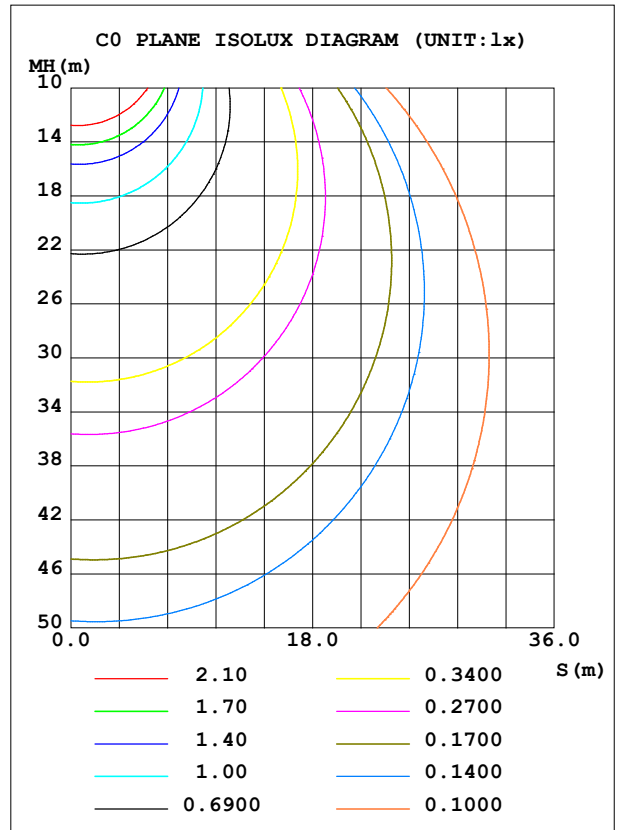
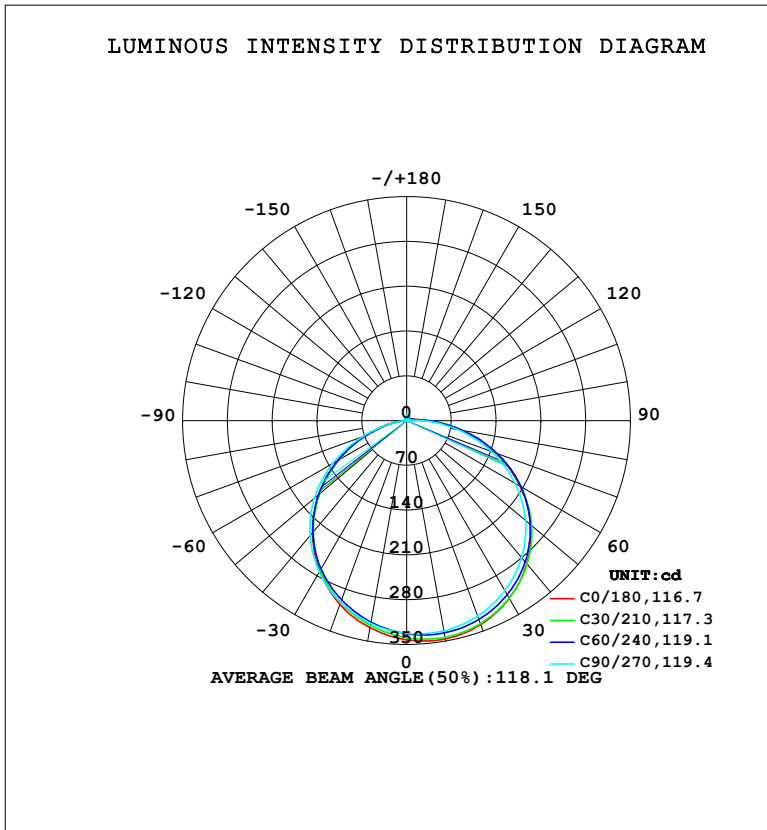


LUMINAIRE PHOTOMETRIC TEST REPORT

NAME: LED Strip	TYPE: Indoor lighting	WEIGHT: 20g
SPEC.: LED	DIM.: 1000*8*1.2mm	SERIAL No.: 20230804026
MFR.: EVERFINE	SUR.: 1000*8mm	Shielding Angle:

DATA OF LAMP		PHOTOMETRIC DATA			
WW-FLS1000E1WW252B-24 (WCP) -UR-ME-EP		Imax (cd)	346.5	S/MH (C0/180)	1.19
NOMINAL POWER (W)	8.88961	LOR (%)	100.0	S/MH (C90/270)	1.23
RATED VOLTAGE (V)	DC 24	TOTAL FLUX (lm)	1072.8	<input type="checkbox"/> UP, DN (C0-180)	1.7,55.9
NOMINAL FLUX (lm)	1072.83	CIE CLASS	DIRECT	<input type="checkbox"/> UP, DN (C180-360)	1.1,41.2
LAMPS INSIDE	1	<input type="checkbox"/> up (%)	2.9	CIBSE SHR NOM	1.25
TEST VOLTAGE (V)	DC 24	<input type="checkbox"/> down (%)	97.1	CIBSE SHR MAX	1.35



C Range: 0 - 360DEG
 C Interval: 15.0DEG
 Test Speed: HIGH
 Temperature: 25.3°C
 Operators: DAMIN
 Test Date: 2023-08-07

Range: 0 - 180DEG
 Interval: 1.0DEG
 Test System: EVERFINE GO-2000B_V1 SYSTEM V2.00.471
 Humidity: 65.0%
 Test Distance: 4.880m [K=1.0000]
 Remarks:

ZONAL FLUX DIAGRAM

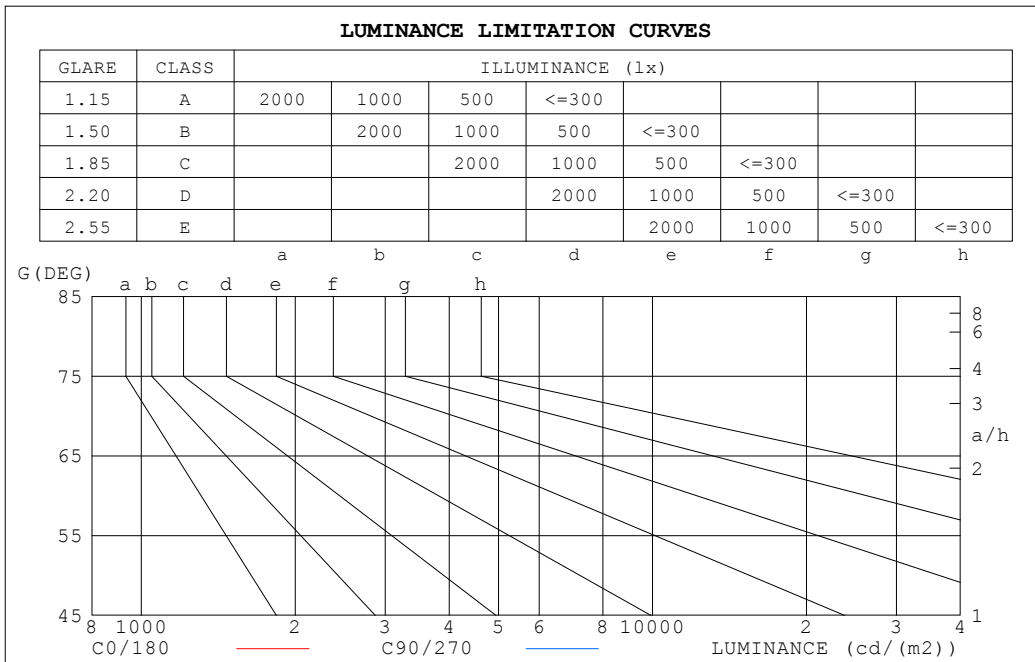
ZONAL FLUX DIAGRAM:

°	C0	C45	C90	C135	C180	C225	C270	C315	°	□ zone	□ total	%lum, lamp
10	346.4	340.7	333.6	333.4	328.6	321.4	321.9	328.0	0- 10	31.87	31.87	2.97,2.97
20	339.1	334.9	324.9	321.0	305.7	298.7	302.2	309.7	10- 20	91.86	123.7	11.5,11.5
30	320.8	318.4	307.0	300.1	271.6	266.8	273.3	281.3	20- 30	140.9	264.6	24.7,24.7
40	292.2	291.9	279.5	269.8	228.8	225.4	234.7	243.6	30- 40	172.8	437.4	40.8,40.8
50	253.2	255.2	242.5	229.8	178.6	176.5	188.4	196.5	40- 50	183.1	620.4	57.8,57.8
60	204.7	208.3	196.0	181.5	122.8	121.3	133.5	140.2	50- 60	169.7	790.2	73.7,73.7
70	148.1	151.9	141.1	126.2	67.94	64.69	73.39	84.82	60- 70	133.9	924.1	86.1,86.1
80	88.08	89.55	79.75	69.87	23.89	20.02	19.23	33.04	70- 80	82.45	1007	93.8,93.8
90	36.66	34.93	25.58	25.05	5.141	3.471	1.456	8.139	80- 90	35.37	1042	97.1,97.1
100	12.93	10.82	4.121	8.770	1.931	1.940	1.700	2.330	90-100	10.82	1053	98.1,98.1
110	3.806	5.434	1.480	3.586	2.070	2.069	2.163	2.558	100-110	4.378	1057	98.5,98.5
120	2.214	4.359	1.860	1.881	2.367	2.484	2.587	3.817	110-120	3.041	1060	98.8,98.8
130	2.150	2.134	2.245	2.285	2.753	2.883	3.008	5.930	120-130	2.553	1063	99.1,99.1
140	2.524	2.525	2.638	2.696	3.122	3.234	3.716	8.041	130-140	2.715	1065	99.3,99.3
150	2.912	2.927	3.055	3.080	3.468	3.544	4.852	9.884	140-150	2.667	1068	99.6,99.6
160	3.311	3.314	8.372	3.452	3.795	3.807	6.094	11.30	150-160	2.455	1071	99.8,99.8
170	3.693	3.686	8.777	5.049	4.017	3.991	7.186	11.47	160-170	1.704	1072	99.9,99.9
180	3.978	3.953	8.566	9.711	3.986	3.958	8.149	9.764	170-180	0.6048	1073	100,100
DEG	LUMINOUS INTENSITY:cd									UNIT:lm		

C Range: 0 - 360DEG
 C Interval: 15.0DEG
 Test Speed: HIGH
 Temperature:25.3°C
 Operators:DAMIN
 Test Date:2023-08-07

□ Range: 0 - 180DEG
 □ Interval: 1.0DEG
 Test System:EVERFINE GO-2000B_V1 SYSTEM V2.00.471
 Humidity:65.0%
 Test Distance:4.880m [K=1.0000]
 Remarks:

LUMINANCE LIMITATION CURVES



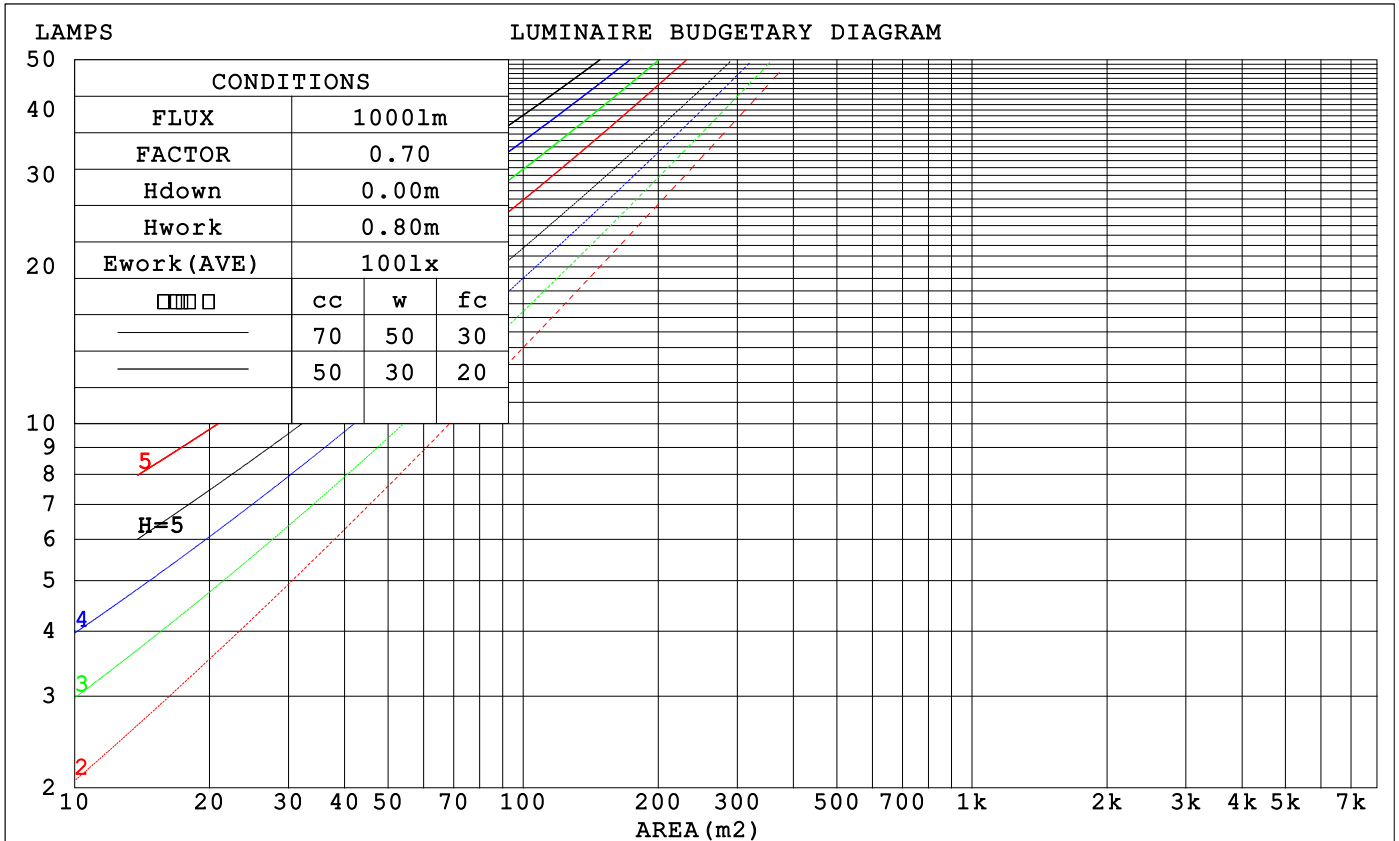
LUMINANCE cd/(m2)		
G (DEG)	C0/180	C90/270
85	86199	72211
80	63402	57407
75	56924	53464
70	54136	51576
65	52426	50158
60	51176	49001
55	50136	48006
50	49239	47153
45	48430	46366

C Range: 0 - 360DEG
 C Interval: 15.0DEG
 Test Speed: HIGH
 Temperature: 25.3°C
 Operators: DAMIN
 Test Date: 2023-08-07

Range: 0 - 180DEG
 Interval: 1.0DEG
 Test System: EVERFINE GO-2000B_V1 SYSTEM V2.00.471
 Humidity: 65.0%
 Test Distance: 4.880m [K=1.0000]
 Remarks:

CU AND LUMINAIRE BUDGETARY ESTIMATE DIAGRAM

□cc	80%			70%			50%			30%			10%			0
□w	50%	30%	10%	50%	30%	10%	50%	30%	10%	50%	30%	10%	50%	30%	10%	0
□fc	20%			20%			20%			20%			20%			0
RCR	RCR:Room Cavity Ratio			Coefficients of Utilization(CU)												
0.0	1.18	1.18	1.18	1.15	1.15	1.15	1.10	1.10	1.10	1.04	1.04	1.04	.99	.99	.99	.97
1.0	1.02	.98	.93	.90	.95	.92	.95	.91	.88	.90	.88	.85	.86	.84	.82	.80
2.0	.88	.81	.75	.86	.80	.74	.82	.77	.72	.79	.74	.70	.75	.71	.68	.66
3.0	.77	.69	.62	.76	.68	.61	.72	.65	.60	.69	.63	.58	.66	.61	.57	.55
4.0	.68	.59	.52	.67	.58	.52	.64	.57	.51	.61	.55	.50	.59	.53	.49	.46
5.0	.61	.52	.45	.60	.51	.44	.57	.49	.44	.55	.48	.43	.53	.47	.42	.40
6.0	.55	.46	.39	.54	.45	.39	.51	.44	.38	.49	.43	.37	.48	.42	.37	.35
7.0	.49	.41	.34	.48	.40	.34	.47	.39	.34	.45	.38	.33	.43	.37	.33	.31
8.0	.45	.36	.30	.44	.36	.30	.43	.35	.30	.41	.34	.30	.40	.34	.29	.27
9.0	.41	.33	.27	.41	.33	.27	.39	.32	.27	.38	.31	.27	.37	.31	.26	.24
10.0	.38	.30	.25	.37	.30	.25	.36	.29	.24	.35	.29	.24	.34	.28	.24	.22



C Range: 0 - 360DEG
 C Interval: 15.0DEG
 Test Speed: HIGH
 Temperature:25.3°C
 Operators:DAMIN
 Test Date:2023-08-07

□ Range: 0 - 180DEG
 □ Interval: 1.0DEG
 Test System:EVERFINE GO-2000B_V1 SYSTEM V2.00.471
 Humidity:65.0%
 Test Distance:4.880m [K=1.0000]
 Remarks:

WEC AND CCEC

□cc	80%			70%			50%			30%			10%			0
□w	50%	30%	10%	50%	30%	10%	50%	30%	10%	50%	30%	10%	50%	30%	10%	0
□fc	20%			20%			20%			20%			20%			0
RCR	RCR:Room Cavity Ratio						Wall Exitance Coefficients (WEC)									
0.0																
1.0	.330	.188	.059	.322	.184	.058	.307	.176	.056	.293	.169	.054	.281	.163	.052	
2.0	.304	.167	.051	.297	.164	.050	.284	.158	.049	.271	.152	.048	.260	.147	.046	
3.0	.278	.148	.044	.272	.146	.044	.260	.141	.043	.249	.137	.042	.239	.132	.041	
4.0	.255	.133	.039	.250	.131	.039	.239	.127	.038	.229	.123	.037	.220	.120	.036	
5.0	.235	.120	.035	.230	.118	.034	.220	.115	.034	.212	.112	.033	.203	.109	.033	
6.0	.217	.109	.031	.213	.107	.031	.204	.105	.030	.196	.102	.030	.189	.099	.030	
7.0	.202	.100	.028	.198	.098	.028	.190	.096	.028	.183	.094	.027	.176	.092	.027	
8.0	.188	.092	.026	.184	.091	.026	.177	.089	.025	.171	.087	.025	.165	.085	.025	
9.0	.176	.085	.024	.173	.084	.024	.166	.082	.023	.161	.080	.023	.155	.079	.023	
10.0	.165	.079	.022	.162	.078	.022	.157	.077	.022	.151	.075	.021	.146	.074	.021	

□cc	80%			70%			50%			30%			10%			0
□w	50%	30%	10%	50%	30%	10%	50%	30%	10%	50%	30%	10%	50%	30%	10%	0
□fc	20%			20%			20%			20%			20%			0
RCR	RCR:Room Cavity Ratio						Ceiling Cavity Exitance Coefficients (CCEC)									
0.0	.212	.212	.212	.182	.182	.182	.124	.124	.124	.071	.071	.071	.023	.023	.023	
1.0	.204	.178	.155	.174	.153	.133	.119	.105	.092	.069	.061	.054	.022	.020	.017	
2.0	.196	.154	.119	.168	.133	.103	.115	.092	.072	.066	.053	.042	.021	.017	.014	
3.0	.189	.137	.096	.162	.118	.083	.111	.082	.058	.064	.048	.034	.021	.016	.011	
4.0	.181	.124	.080	.155	.107	.069	.107	.074	.049	.062	.044	.029	.020	.014	.010	
5.0	.173	.113	.069	.149	.098	.060	.103	.069	.042	.059	.040	.025	.019	.013	.008	
6.0	.166	.105	.061	.143	.091	.053	.099	.064	.038	.057	.037	.022	.018	.012	.007	
7.0	.159	.098	.056	.137	.085	.048	.095	.060	.034	.055	.035	.020	.018	.012	.007	
8.0	.153	.092	.051	.131	.080	.045	.091	.056	.032	.053	.033	.019	.017	.011	.006	
9.0	.146	.088	.048	.126	.076	.042	.087	.053	.030	.051	.032	.018	.016	.010	.006	
10.0	.141	.083	.045	.121	.072	.039	.084	.051	.028	.049	.030	.017	.016	.010	.006	

C Range: 0 - 360DEG
 C Interval: 15.0DEG
 Test Speed: HIGH
 Temperature: 25.3°C
 Operators: DAMIN
 Test Date: 2023-08-07

□ Range: 0 - 180DEG
 □ Interval: 1.0DEG
 Test System: EVERFINE GO-2000B_V1 SYSTEM V2.00.471
 Humidity: 65.0%
 Test Distance: 4.880m [K=1.0000]
 Remarks:

UGR(Unified Glare Rating) Table

ceiling/cavity	0.7	0.7	0.5	0.5	0.3	0.7	0.7	0.5	0.5	0.3
walls	0.5	0.3	0.5	0.3	0.3	0.5	0.3	0.5	0.3	0.3
working plane	0.2	0.2	0.2	0.2	0.2	0.2	0.2	0.2	0.2	0.2
Room dimensions	Viewed crosswise					Viewed endwise				
x = 2H y = 2H	26.9	28.4	27.2	28.6	28.9	26.7	28.3	27.1	28.5	28.8
3H	28.9	30.3	29.2	30.5	30.8	28.7	30.1	29.0	30.4	30.7
4H	29.8	31.1	30.1	31.4	31.7	29.6	30.9	30.0	31.2	31.6
6H	30.6	31.9	31.0	32.2	32.6	30.4	31.7	30.8	32.0	32.3
8H	31.0	32.3	31.4	32.6	33.0	30.8	32.0	31.1	32.3	32.7
12H	31.5	32.6	31.9	33.0	33.3	31.1	32.3	31.5	32.6	33.0
4H 2H	27.6	29.0	28.0	29.3	29.6	27.5	28.9	27.9	29.2	29.5
3H	29.8	31.0	30.2	31.3	31.7	29.7	30.9	30.1	31.2	31.6
4H	30.9	32.0	31.3	32.3	32.7	30.8	31.8	31.2	32.2	32.6
6H	31.9	32.9	32.4	33.3	33.7	31.7	32.7	32.2	33.1	33.5
8H	32.4	33.3	32.9	33.7	34.2	32.2	33.1	32.6	33.5	33.9
12H	32.9	33.7	33.4	34.2	34.6	32.6	33.4	33.1	33.8	34.3
8H 4H	31.3	32.2	31.8	32.6	33.1	31.2	32.1	31.7	32.5	33.0
6H	32.6	33.3	33.1	33.8	34.3	32.4	33.2	32.9	33.6	34.1
8H	33.2	33.9	33.7	34.3	34.9	33.0	33.7	33.5	34.2	34.7
12H	33.9	34.5	34.4	34.9	35.5	33.6	34.2	34.1	34.7	35.2
12H 4H	31.4	32.2	31.9	32.6	33.1	31.3	32.1	31.8	32.5	33.0
6H	32.7	33.4	33.2	33.9	34.4	32.6	33.3	33.1	33.7	34.2
8H	33.4	34.0	34.0	34.5	35.0	33.3	33.8	33.8	34.3	34.9
Variations with the observer position at spacings(CIE Pub.117):										
S = 1.0H	+ 0.1 / - 0.1					+ 0.1 / - 0.1				
1.5H	+ 0.2 / - 0.3					+ 0.2 / - 0.3				
2.0H	+ 0.2 / - 0.4					+ 0.2 / - 0.4				

CIE Pub.117, 1073 lm Total Lamp Luminous Flux Correct (8log(F/F0) = 0.2)
 Area: 0.008 m2

C Range: 0 - 360DEG
 C Interval: 15.0DEG
 Test Speed: HIGH
 Temperature:25.3°C
 Operators:DAMIN
 Test Date:2023-08-07

Range: 0 - 180DEG
 Interval: 1.0DEG
 Test System:EVERFINE GO-2000B_V1 SYSTEM V2.00.471
 Humidity:65.0%
 Test Distance:4.880m [K=1.0000]
 Remarks:

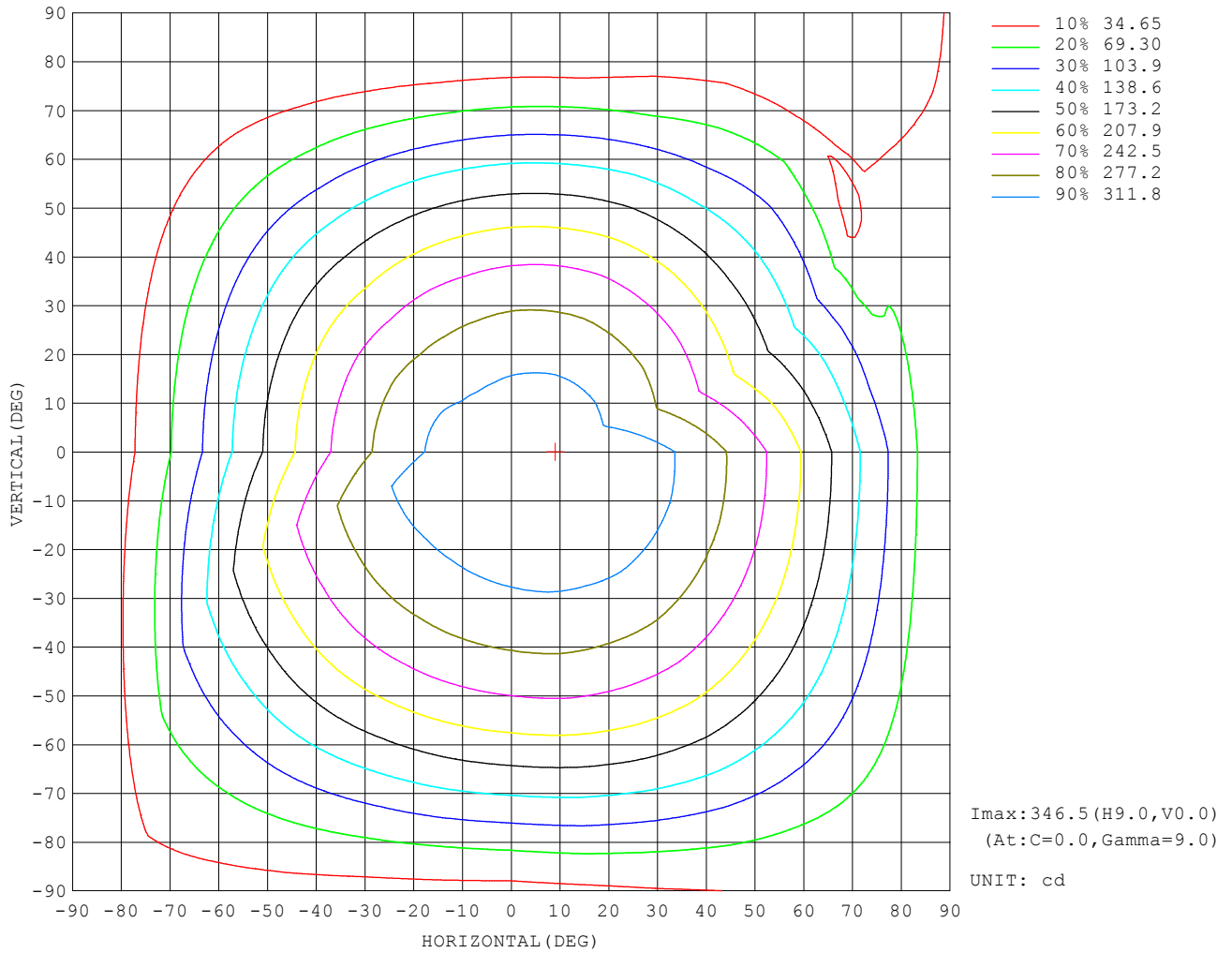
UTILIZATION FACTORS TABLE

REFLECTANCE										
Ceiling	0.8	0.8	0.8	0.7	0.7	0.7	0.5	0.5	0.5	0
Walls	0.7	0.5	0.3	0.7	0.5	0.3	0.7	0.5	0.3	0
Working plane	0.2	0.2	0.2	0.2	0.2	0.2	0.2	0.2	0.2	0
ROOM INDEX	UTILIZATION FACTORS (PERCENT) $k(RI) \times RCR = 5$									
$k = 0.60$	55	43	36	54	43	36	53	42	36	29
0.80	65	53	46	64	53	45	62	52	45	38
1.00	73	62	54	72	61	54	70	63	53	46
1.25	81	70	62	79	69	62	76	67	61	53
1.50	86	75	68	84	74	67	80	72	66	58
2.00	93	83	77	91	82	76	87	80	74	65
2.50	97	88	82	94	87	81	90	84	79	70
3.00	100	93	87	98	91	86	93	88	83	74
4.00	104	98	93	102	96	91	97	92	88	79
5.00	107	102	97	104	99	95	99	95	92	82
ROOM INDEX	UF (total)									Direct
According to DIN EN 13032-2 2004			Suspended				SHRNOM = 1.25			

C Range: 0 - 360DEG
 C Interval: 15.0DEG
 Test Speed: HIGH
 Temperature: 25.3°C
 Operators: DAMIN
 Test Date: 2023-08-07

Range: 0 - 180DEG
 Interval: 1.0DEG
 Test System: EVERFINE GO-2000B_V1 SYSTEM V2.00.471
 Humidity: 65.0%
 Test Distance: 4.880m [K=1.0000]
 Remarks:

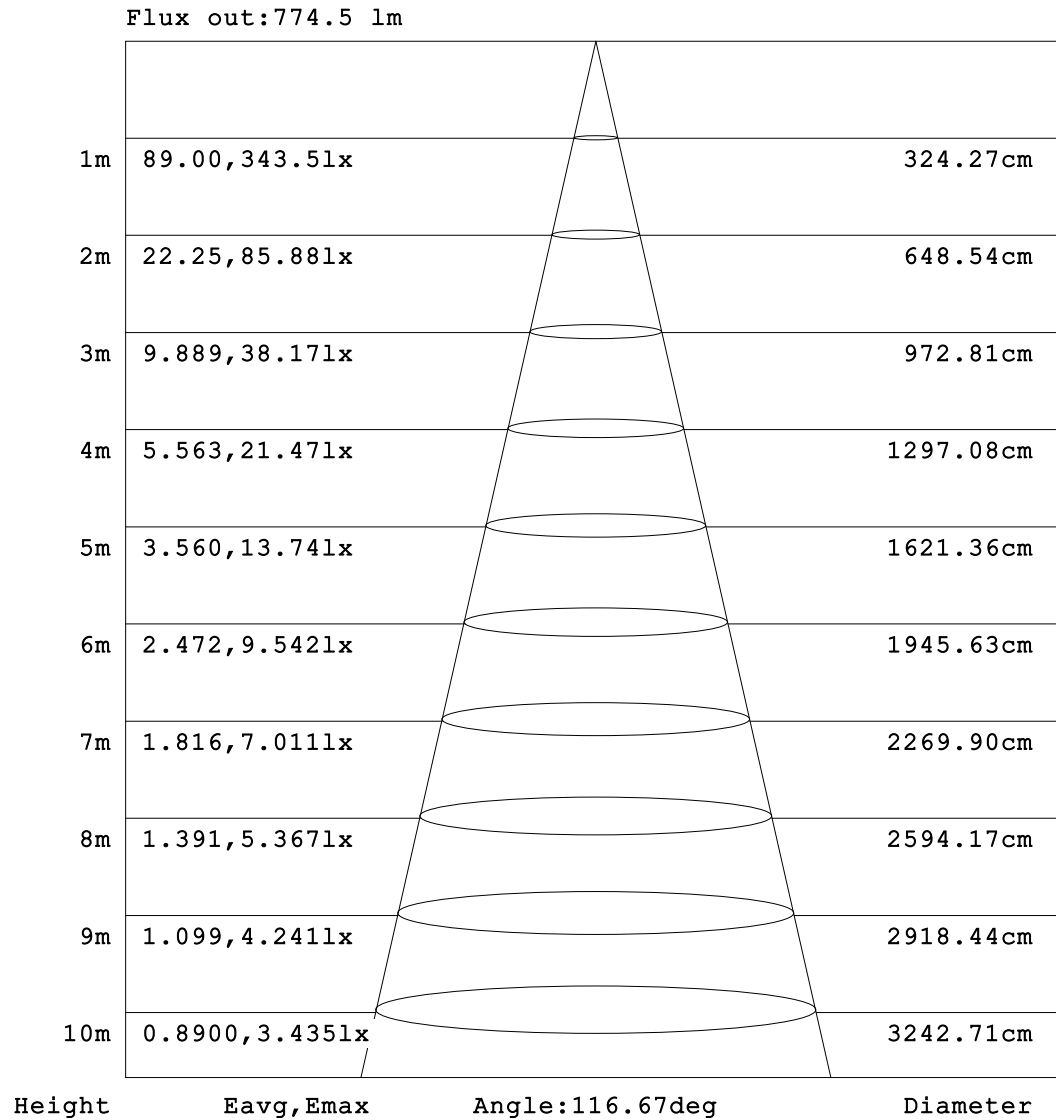
ISOCANDELA DIAGRAM



C Range: 0 - 360DEG
 C Interval: 15.0DEG
 Test Speed: HIGH
 Temperature: 25.3°C
 Operators: DAMIN
 Test Date: 2023-08-07

Range: 0 - 180DEG
 Interval: 1.0DEG
 Test System: EVERFINE GO-2000B_V1 SYSTEM V2.00.471
 Humidity: 65.0%
 Test Distance: 4.880m [K=1.0000]
 Remarks:

AAI Figure

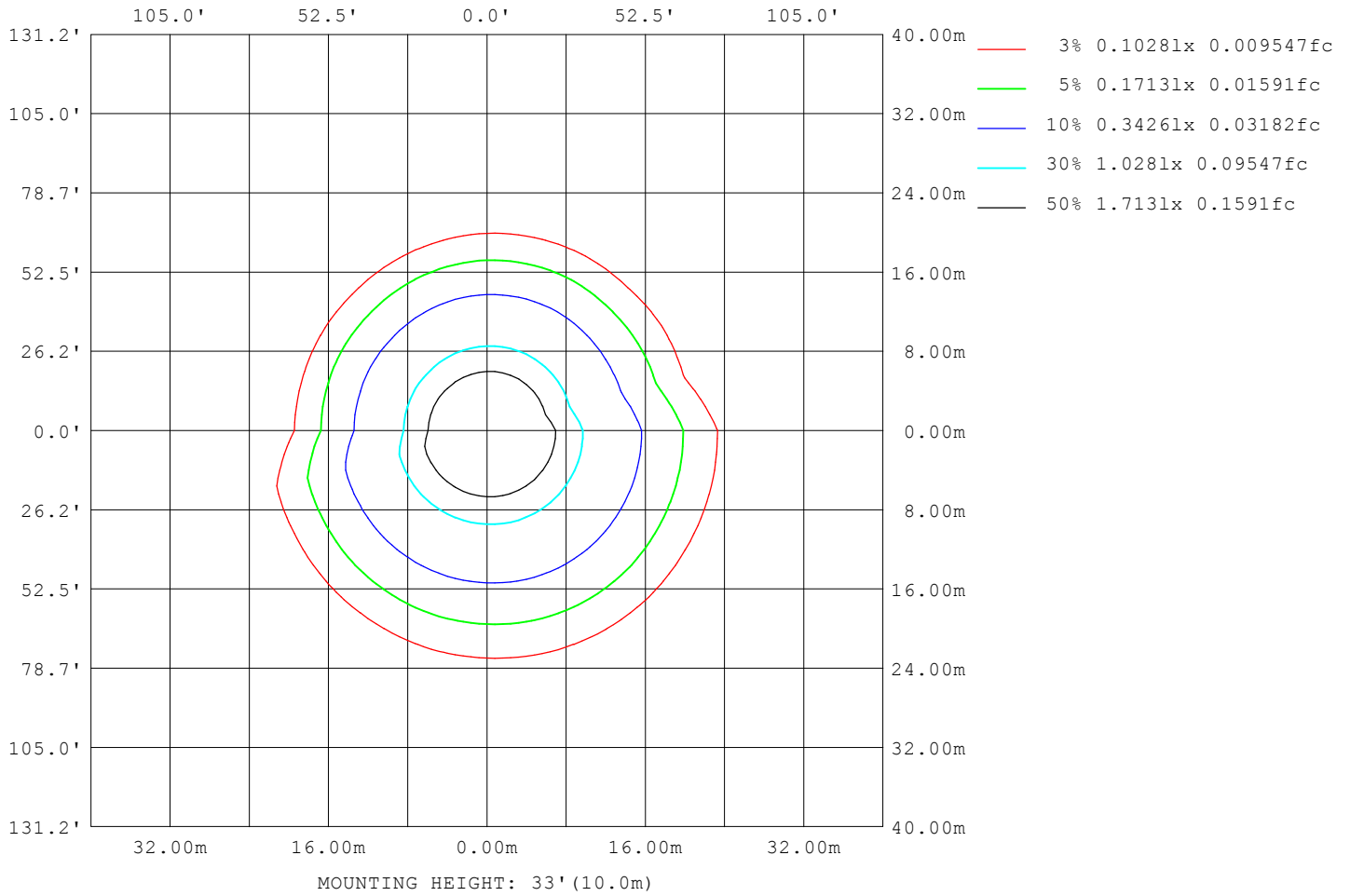


Note:The Curves indicate the illuminated area and the average illumination when the luminaire is at different distance.

C Range: 0 - 360DEG
 C Interval: 15.0DEG
 Test Speed: HIGH
 Temperature:25.3°C
 Operators:DAMIN
 Test Date:2023-08-07

Range: 0 - 180DEG
 Interval: 1.0DEG
 Test System:EVERFINE GO-2000B_V1 SYSTEM V2.00.471
 Humidity:65.0%
 Test Distance:4.880m [K=1.0000]
 Remarks:

ISOLUX DIAGRAM



C Range: 0 - 360DEG
 C Interval: 15.0DEG
 Test Speed: HIGH
 Temperature: 25.3°C
 Operators: DAMIN
 Test Date: 2023-08-07

Range: 0 - 180DEG
 Interval: 1.0DEG
 Test System: EVERFINE GO-2000B_V1 SYSTEM V2.00.471
 Humidity: 65.0%
 Test Distance: 4.880m [K=1.0000]
 Remarks:

LED Avg.L Report

NAME: LED Strip	TYPE: Indoor lighting	WEIGHT: 20g
SPEC.: LED	DIM.: 1000*8*1.2mm	SERIAL No.: 20230804026
MFR.: EVERFINE	SUR.: 1000*8mm	Shielding Angle:

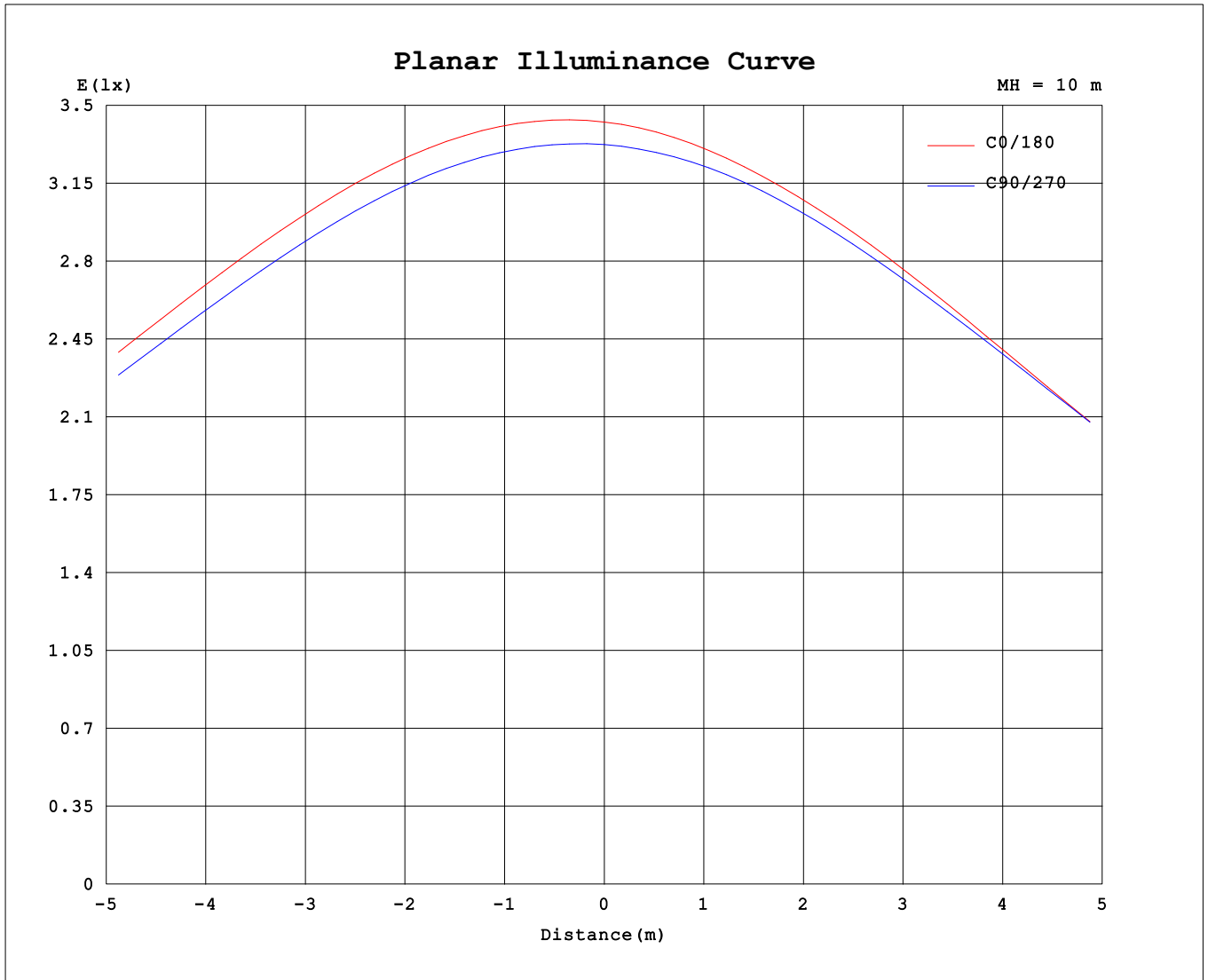
AvgL	cd/m2
L_0~180 (65) av	40207
L_0~180 (75) av	39076
L_0~180 (85) av	50511
L_90~270 (65) av	40400
L_90~270 (75) av	37368
L_90~270 (85) av	38719
L_45 (65) av	39861
L_45 (75) av	38185
L_45 (85) av	42883

Standard: GB/T 29293-2012

C Range: 0 - 360DEG
 C Interval: 15.0DEG
 Test Speed: HIGH
 Temperature:25.3℃
 Operators:DAMIN
 Test Date:2023-08-07

Range: 0 - 180DEG
 Interval: 1.0DEG
 Test System:EVERFINE GO-2000B_V1 SYSTEM V2.00.471
 Humidity:65.0%
 Test Distance:4.880m [K=1.0000]
 Remarks:

Planar Illuminance Curve



C Range: 0 - 360DEG
 C Interval: 15.0DEG
 Test Speed: HIGH
 Temperature: 25.3°C
 Operators: DAMIN
 Test Date: 2023-08-07

Range: 0 - 180DEG
 Interval: 1.0DEG
 Test System: EVERFINE GO-2000B_V1 SYSTEM V2.00.471
 Humidity: 65.0%
 Test Distance: 4.880m [K=1.0000]
 Remarks:

LUMINOUS DISTRIBUTION INTENSITY DATA

Table--1

UNIT: cd

C (DEG) \ □ (DEG)	0	15	30	45	60	75	90	105	120	135	150	165	180	195	210	225	240	255	270
0	343	342	339	336	333	332	332	333	334	335	338	339	343	342	339	336	333	332	332
5	346	345	343	340	336	335	334	334	335	336	337	339	337	336	333	330	328	328	328
10	346	346	344	341	337	335	334	333	333	333	335	336	329	327	325	321	320	320	322
15	344	344	342	339	335	333	330	329	329	329	329	331	319	317	315	311	310	311	313
20	339	340	337	335	331	328	325	323	322	321	322	323	306	304	303	299	298	299	302
25	331	332	330	328	324	321	317	314	312	311	312	313	290	288	287	284	284	286	289
30	321	322	320	318	314	311	307	304	301	300	300	300	272	270	269	267	268	269	273
35	308	309	308	306	303	299	294	291	288	286	285	285	251	250	249	247	249	251	255
40	292	294	293	292	288	285	279	275	272	270	267	267	229	227	227	225	228	231	235
45	274	276	275	275	271	268	262	258	254	251	248	247	205	203	203	202	205	208	213
50	253	255	255	255	252	249	242	238	233	230	226	225	179	177	177	177	180	184	188
55	230	232	232	233	230	227	220	215	210	207	202	201	151	150	150	150	153	157	161
60	205	206	207	208	206	202	196	191	186	181	177	175	123	121	122	121	125	129	134
65	177	178	179	181	180	176	170	165	159	154	150	147	94.6	93.2	93.1	92.7	95.4	98.8	104
70	148	149	150	152	151	147	141	137	130	126	121	120	67.9	66.5	65.7	64.7	66.3	68.9	73.4
75	118	119	119	121	120	117	111	107	101	97.8	93.5	92.0	44.0	42.7	41.7	39.9	39.6	40.7	44.0
80	88.1	88.5	88.1	89.5	88.3	85.6	79.7	76.4	72.5	69.9	67.1	65.9	23.9	22.9	22.0	20.0	18.8	17.5	19.2
85	60.1	60.1	59.4	59.9	58.0	55.2	50.3	48.4	46.2	45.2	43.5	42.8	10.3	9.81	9.18	7.66	6.35	4.54	3.65
90	36.7	36.2	34.9	34.9	32.7	29.1	25.6	25.5	24.9	25.1	24.5	24.3	5.14	4.85	4.29	3.47	2.67	1.88	1.46
95	21.1	20.2	18.9	18.5	17.0	13.2	7.47	11.3	12.3	13.1	13.3	13.3	2.92	2.80	2.45	2.08	1.93	1.69	1.51
100	12.9	11.9	10.9	10.8	10.8	9.23	4.12	3.01	7.94	8.77	9.01	9.48	1.93	1.95	1.92	1.94	1.92	1.71	1.70
105	7.16	6.36	5.84	2.73	5.27	3.06	2.22	1.39	3.48	6.97	7.23	7.69	1.95	1.95	1.97	1.99	1.93	1.94	1.93
110	3.81	3.30	3.13	5.43	7.95	4.69	1.48	1.47	1.53	3.59	6.67	7.31	2.07	2.08	2.09	2.07	2.14	2.17	2.16
115	2.54	2.26	2.72	4.87	6.57	7.79	1.69	1.66	1.66	1.86	3.54	7.04	2.20	2.19	2.21	2.27	2.37	2.40	2.38
120	2.21	2.00	2.29	4.36	1.81	1.85	1.86	1.86	1.86	1.88	2.14	3.98	2.37	2.38	2.41	2.48	2.59	2.62	2.59
125	2.09	1.99	2.22	1.96	1.95	2.03	2.05	2.08	2.07	2.08	2.09	2.32	2.56	2.58	2.61	2.69	2.80	2.84	2.80
130	2.15	2.14	2.13	2.13	2.15	2.21	2.24	2.30	2.28	2.28	2.28	2.25	2.75	2.77	2.81	2.88	2.99	3.03	3.01
135	2.33	2.33	2.32	2.32	2.34	2.39	2.44	2.50	2.49	2.49	2.48	2.46	2.94	2.95	2.99	3.06	3.17	3.21	3.31
140	2.52	2.53	2.52	2.52	2.53	2.59	2.64	2.71	2.70	2.70	2.69	2.72	3.12	3.13	3.17	3.23	3.33	3.37	3.72
145	2.72	2.73	2.72	2.73	2.73	2.79	2.85	4.14	2.90	2.89	2.88	2.93	3.30	3.31	3.34	3.40	3.48	3.59	4.24
150	2.91	2.94	2.92	2.93	2.93	3.00	3.05	5.57	3.10	3.08	3.07	3.13	3.47	3.47	3.50	3.54	3.62	3.90	4.85
155	3.11	3.14	3.13	3.12	3.14	7.55	8.28	6.18	3.28	3.27	3.25	3.32	3.63	3.62	3.65	3.68	3.74	4.28	5.48
160	3.31	3.33	3.32	3.31	5.61	7.41	8.37	7.41	3.89	3.45	3.42	3.50	3.80	3.76	3.79	3.81	3.86	4.69	6.09
165	3.51	3.51	3.50	3.52	5.49	7.21	8.59	8.39	6.17	3.63	3.60	3.67	3.92	3.89	3.91	3.91	3.95	5.29	6.67
170	3.69	3.69	3.67	3.69	5.29	6.78	8.78	8.92	7.89	5.05	3.78	3.84	4.02	3.98	4.00	3.99	4.15	5.73	7.19
175	3.85	3.85	3.82	3.84	4.92	6.59	8.66	9.21	9.34	7.66	4.21	4.03	4.05	4.04	4.03	4.03	4.33	6.11	7.73
180	3.98	3.97	3.95	3.95	4.77	6.20	8.57	9.32	9.83	9.71	8.51	5.16	3.99	3.98	3.96	3.96	4.45	6.52	8.15

C Range: 0 - 360DEG
 C Interval: 15.0DEG
 Test Speed: HIGH
 Temperature: 25.3°C
 Operators: DAMIN
 Test Date: 2023-08-07

□ Range: 0 - 180DEG
 □ Interval: 1.0DEG
 Test System: EVERFINE GO-2000B_V1 SYSTEM V2.00.471
 Humidity: 65.0%
 Test Distance: 4.880m [K=1.0000]
 Remarks:

LUMINOUS DISTRIBUTION INTENSITY DATA

Table--2

UNIT: cd

C (DEG) \ □ (DEG)	285	300	315	330	345														
0	333	334	335	338	339														
5	329	331	333	336	336														
10	323	326	328	330	330														
15	315	318	320	322	322														
20	304	308	310	312	311														
25	292	295	297	298	297														
30	276	280	281	283	281														
35	259	262	264	265	263														
40	239	243	244	245	243														
45	216	220	221	222	221														
50	192	196	196	197	197														
55	165	169	169	171	175														
60	137	140	140	145	147														
65	107	110	111	118	118														
70	76.6	78.6	84.8	89.1	81.1														
75	46.0	51.4	57.5	61.0	35.2														
80	20.6	28.7	33.0	28.6	36.5														
85	5.11	9.66	6.83	20.2	21.5														
90	2.12	5.13	8.14	11.4	12.8														
95	1.62	2.28	3.97	6.03	7.40														
100	1.73	1.90	2.33	3.25	4.32														
105	1.92	2.05	2.28	2.64	3.31														
110	2.11	2.20	2.56	2.99	3.86														
115	2.32	2.47	3.05	3.71	4.84														
120	2.56	2.91	3.82	4.62	5.99														
125	2.93	3.55	4.81	5.73	7.16														
130	3.49	4.32	5.93	6.86	8.32														
135	4.17	5.19	6.98	8.02	9.43														
140	4.92	6.13	8.04	9.11	10.4														
145	5.75	7.08	9.11	9.95	11.0														
150	6.55	7.87	9.88	10.7	11.5														
155	7.31	8.51	10.7	11.6	11.9														
160	7.97	9.31	11.3	12.1	11.6														
165	8.56	10.4	11.3	12.2	10.8														
170	9.33	11.0	11.5	11.7	9.18														
175	9.45	10.9	10.8	10.3	7.00														
180	9.57	9.69	9.76	8.59	4.54														

C Range: 0 - 360DEG
 C Interval: 15.0DEG
 Test Speed: HIGH
 Temperature: 25.3°C
 Operators: DAMIN
 Test Date: 2023-08-07

□ Range: 0 - 180DEG
 □ Interval: 1.0DEG
 Test System: EVERFINE GO-2000B_V1 SYSTEM V2.00.471
 Humidity: 65.0%
 Test Distance: 4.880m [K=1.0000]
 Remarks: