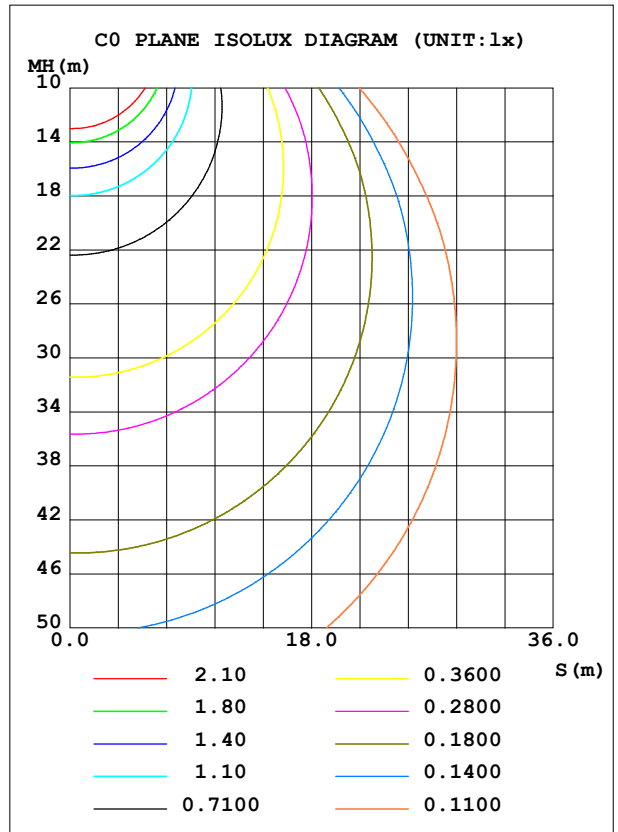
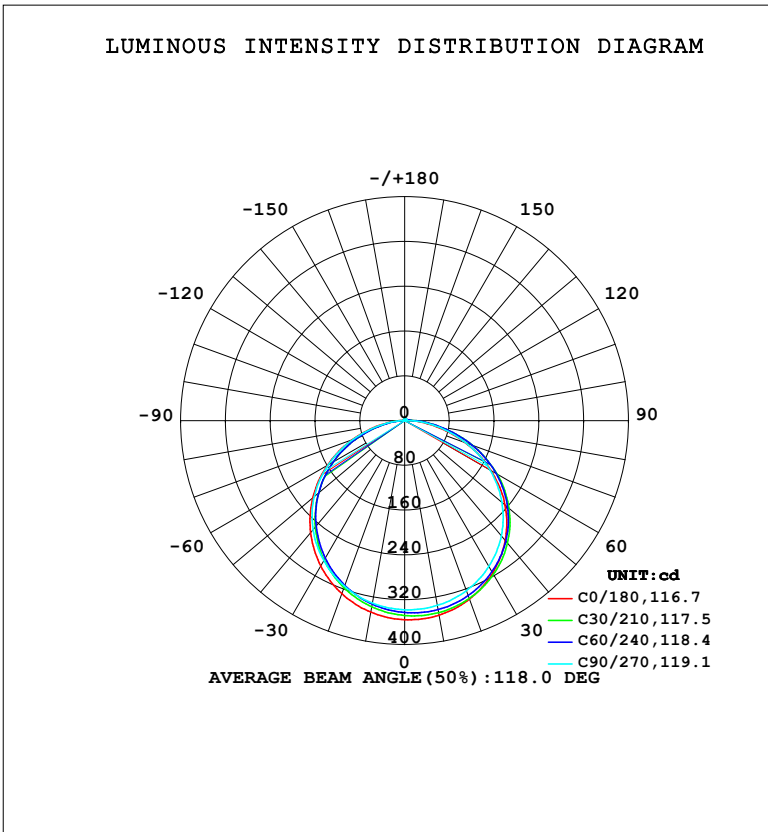


**LUMINAIRE PHOTOMETRIC TEST REPORT**

NAME: LED Strip	TYPE: Indoor lighting	WEIGHT: 20g
SPEC.: LED	DIM.: 500*10*1.2mm	SERIAL No.: 20230804043
MFR.: EVERFINE	SUR.: 500*10mm	Shielding Angle:

DATA OF LAMP		PHOTOMETRIC DATA			
NO. 24 (WCP) -UR-ME-EP W-S		Imax (cd)	355.9	S/MH (C0/180)	1.26
NOMINAL POWER (W)	9.66356	LOR (%)	100.0	S/MH (C90/270)	1.27
RATED VOLTAGE (V)	DC 24	TOTAL FLUX (lm)	1071.1	<input type="checkbox"/> UP, DN (C0-180)	1.3, 51.1
NOMINAL FLUX (lm)	1071.09	CIE CLASS	DIRECT	<input type="checkbox"/> UP, DN (C180-360)	0.9, 46.7
LAMPS INSIDE	1	<input type="checkbox"/> up (%)	2.2	CIBSE SHR NOM	1.25
TEST VOLTAGE (V)	DC 24	<input type="checkbox"/> down (%)	97.8	CIBSE SHR MAX	1.35



C Range: 0 - 360DEG  
 C Interval: 15.0DEG  
 Test Speed: HIGH  
 Temperature: 25.3°C  
 Operators: DAMIN  
 Test Date: 2023-08-05

Range: 0 - 180DEG  
 Interval: 1.0DEG  
 Test System: EVERFINE GO-2000B\_V1 SYSTEM V2.00.471  
 Humidity: 65.0%  
 Test Distance: 4.880m [K=1.0000]  
 Remarks:

**ZONAL FLUX DIAGRAM**

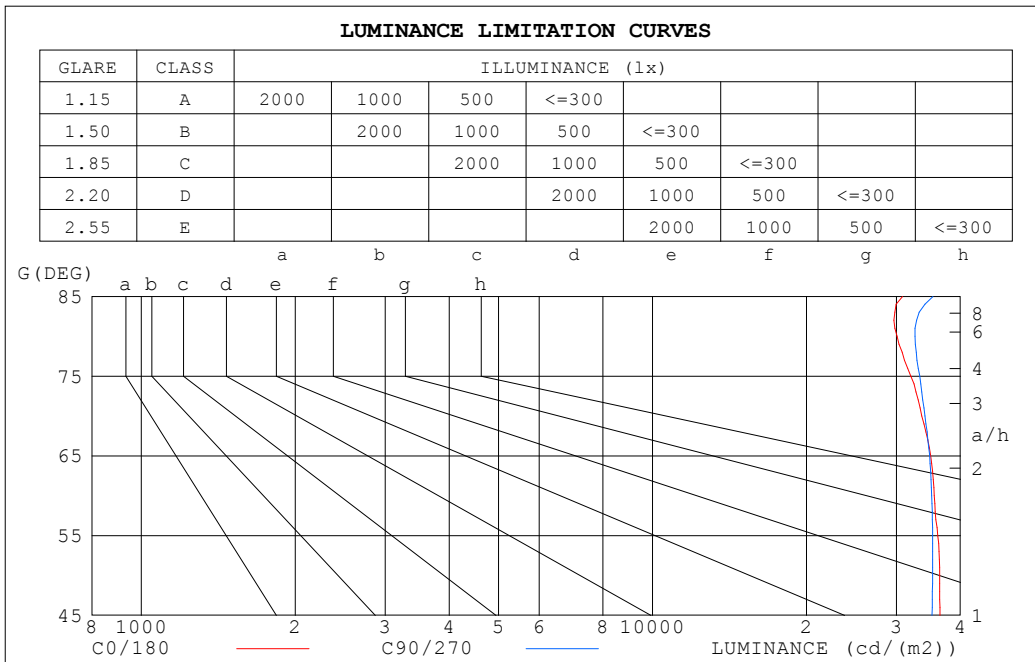
ZONAL FLUX DIAGRAM:

°	C0	C45	C90	C135	C180	C225	C270	C315	°	□ zone	□ total	%lum,lamp
10	353.0	345.6	335.3	332.7	347.6	334.2	331.1	337.1	0- 10	32.58	32.58	3.04,3.04
20	339.2	335.7	323.1	315.8	329.0	313.5	315.0	324.3	10- 20	93.85	126.4	11.8,11.8
30	314.6	315.5	300.9	289.6	300.1	283.3	289.0	297.8	20- 30	143.8	270.2	25.2,25.2
40	279.4	284.7	268.8	254.0	261.5	244.4	254.7	263.2	30- 40	176.2	446.5	41.7,41.7
50	234.2	243.7	226.9	209.9	214.1	198.0	210.9	217.9	40- 50	186.4	632.9	59.1,59.1
60	177.9	192.2	175.9	157.9	159.4	144.5	157.1	163.4	50- 60	172.2	805.2	75.2,75.2
70	114.9	130.0	116.7	101.1	99.26	86.56	97.89	104.4	60- 70	133.7	938.9	87.7,87.7
80	52.23	66.12	56.61	47.58	41.57	33.52	38.04	48.91	70- 80	79.36	1018	95.1,95.1
90	11.47	19.04	11.73	14.39	6.648	4.118	1.448	14.62	80- 90	28.91	1047	97.8,97.8
100	3.163	7.845	1.574	9.383	2.064	1.498	1.421	3.312	90-100	7.317	1054	98.4,98.4
110	1.847	4.871	1.727	4.426	1.783	1.854	1.868	2.128	100-110	3.704	1058	98.8,98.8
120	2.026	3.429	2.076	2.033	2.198	2.287	2.325	2.482	110-120	2.663	1061	99,99
130	2.420	2.441	2.385	2.442	2.608	2.702	2.761	2.948	120-130	2.280	1063	99.3,99.3
140	2.830	2.728	2.796	2.916	3.009	3.088	3.168	3.627	130-140	2.260	1065	99.5,99.5
150	3.236	3.147	3.191	3.401	3.389	3.442	3.541	5.131	140-150	2.175	1068	99.7,99.7
160	3.635	3.532	3.552	3.901	3.753	3.748	3.862	6.784	150-160	1.854	1069	99.8,99.8
170	3.981	3.878	4.088	4.435	4.054	3.991	4.120	7.836	160-170	1.264	1071	100,100
180	4.193	4.125	4.263	5.558	4.193	4.110	4.258	5.626	170-180	0.4448	1071	100,100
DEG	LUMINOUS INTENSITY:cd									UNIT:lm		

C Range: 0 - 360DEG  
 C Interval: 15.0DEG  
 Test Speed: HIGH  
 Temperature:25.3°C  
 Operators:DAMIN  
 Test Date:2023-08-05

□ Range: 0 - 180DEG  
 □ Interval: 1.0DEG  
 Test System:EVERFINE GO-2000B\_V1 SYSTEM V2.00.471  
 Humidity:65.0%  
 Test Distance:4.880m [K=1.0000]  
 Remarks:

**LUMINANCE LIMITATION CURVES**



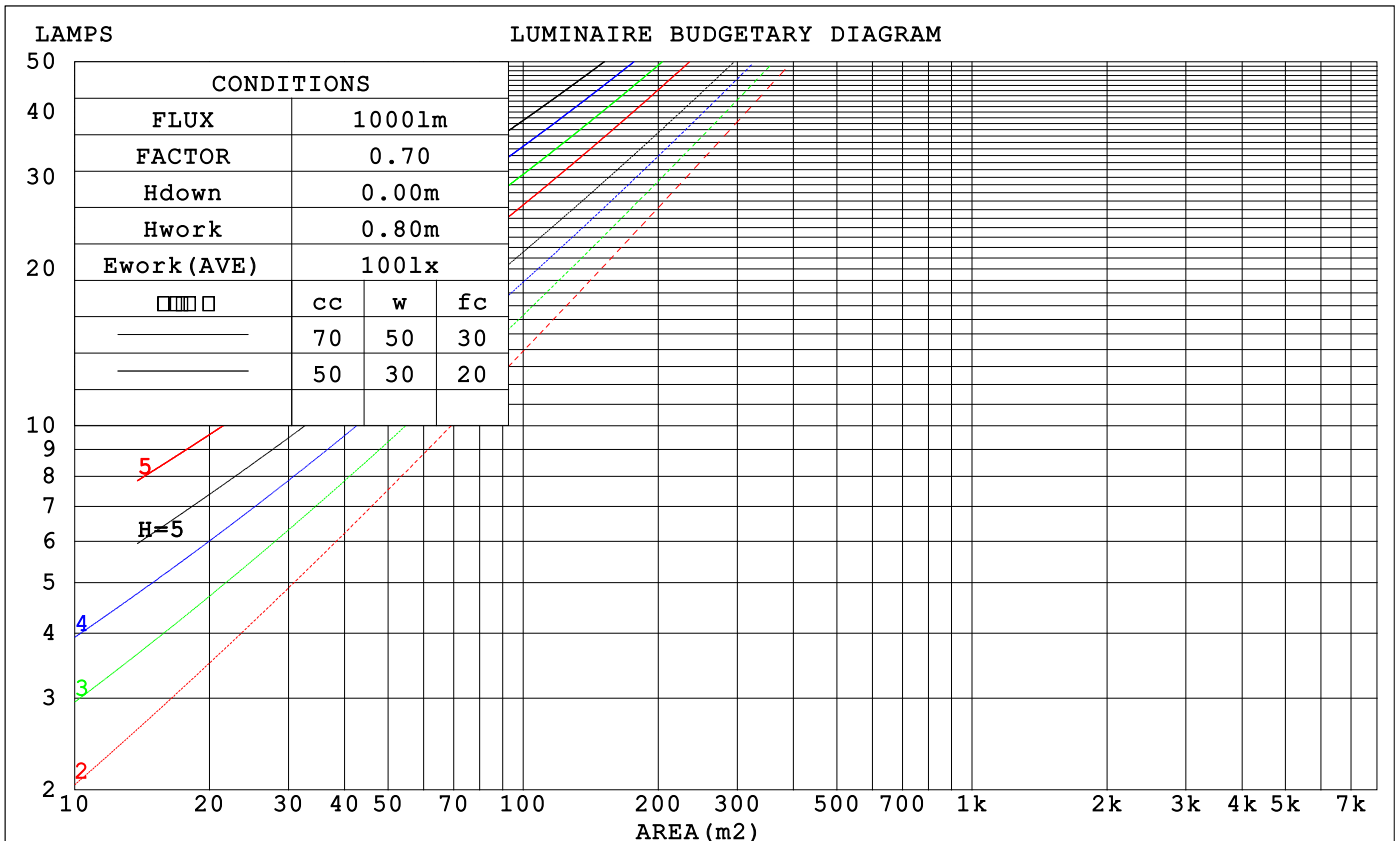
LUMINANCE cd/(m2)		
G (DEG)	C0/180	C90/270
85	30849	35350
80	30080	32599
75	32004	33308
70	33601	34109
65	35007	34832
60	35577	35174
55	36145	35304
50	36438	35300
45	36477	35217

C Range: 0 - 360DEG  
 C Interval: 15.0DEG  
 Test Speed: HIGH  
 Temperature: 25.3°C  
 Operators: DAMIN  
 Test Date: 2023-08-05

Range: 0 - 180DEG  
 Interval: 1.0DEG  
 Test System: EVERFINE GO-2000B\_V1 SYSTEM V2.00.471  
 Humidity: 65.0%  
 Test Distance: 4.880m [K=1.0000]  
 Remarks:

**CU AND LUMINAIRE BUDGETARY ESTIMATE DIAGRAM**

□cc	80%			70%			50%			30%			10%			0
□w	50%	30%	10%	50%	30%	10%	50%	30%	10%	50%	30%	10%	50%	30%	10%	0
□fc	20%			20%			20%			20%			20%			0
RCR	RCR:Room Cavity Ratio			Coefficients of Utilization(CU)												
0.0	1.19	1.19	1.19	1.15	1.15	1.15	1.10	1.10	1.10	1.05	1.05	1.05	.00	.00	.00	.98
1.0	1.03	.98	.94	1.00	.96	.92	.95	.92	.89	.91	.88	.86	.87	.85	.83	.81
2.0	.89	.82	.76	.87	.81	.75	.83	.78	.73	.79	.75	.71	.76	.72	.69	.67
3.0	.78	.70	.63	.76	.68	.62	.73	.66	.61	.70	.64	.59	.67	.62	.58	.56
4.0	.69	.60	.53	.67	.59	.52	.65	.57	.52	.62	.56	.51	.59	.54	.50	.47
5.0	.61	.52	.45	.60	.51	.45	.58	.50	.44	.55	.49	.44	.53	.48	.43	.41
6.0	.55	.46	.39	.54	.45	.39	.52	.44	.39	.50	.43	.38	.48	.42	.38	.35
7.0	.50	.41	.35	.49	.41	.35	.47	.40	.34	.46	.39	.34	.44	.38	.33	.31
8.0	.45	.37	.31	.45	.36	.31	.43	.36	.30	.42	.35	.30	.40	.34	.30	.28
9.0	.42	.33	.28	.41	.33	.28	.40	.32	.27	.38	.32	.27	.37	.31	.27	.25
10.0	.38	.30	.25	.38	.30	.25	.37	.30	.25	.36	.29	.25	.35	.29	.24	.23



C Range: 0 - 360DEG  
 C Interval: 15.0DEG  
 Test Speed: HIGH  
 Temperature: 25.3°C  
 Operators: DAMIN  
 Test Date: 2023-08-05

□ Range: 0 - 180DEG  
 □ Interval: 1.0DEG  
 Test System: EVERFINE GO-2000B\_V1 SYSTEM V2.00.471  
 Humidity: 65.0%  
 Test Distance: 4.880m [K=1.0000]  
 Remarks:

**WEC AND CCEC**

□cc	80%			70%			50%			30%			10%			0
□w	50%	30%	10%	50%	30%	10%	50%	30%	10%	50%	30%	10%	50%	30%	10%	0
□fc	20%			20%			20%			20%			20%			0
RCR	RCR:Room Cavity Ratio						Wall Exitance Coefficients(WEC)									
0.0	.322	.183	.058	.315	.179	.057	.300	.172	.055	.287	.165	.053	.274	.159	.051	
1.0	.300	.164	.050	.293	.161	.050	.280	.156	.048	.268	.150	.047	.257	.145	.046	
2.0	.276	.147	.044	.269	.144	.043	.258	.140	.042	.247	.135	.042	.237	.131	.041	
3.0	.253	.132	.039	.248	.130	.038	.238	.126	.038	.228	.122	.037	.219	.119	.036	
4.0	.234	.119	.034	.229	.117	.034	.220	.114	.034	.211	.111	.033	.203	.109	.033	
5.0	.216	.108	.031	.212	.107	.031	.204	.104	.030	.196	.102	.030	.189	.099	.030	
6.0	.201	.099	.028	.197	.098	.028	.190	.096	.028	.183	.094	.027	.176	.092	.027	
7.0	.187	.092	.026	.184	.091	.026	.177	.089	.025	.171	.087	.025	.165	.085	.025	
8.0	.175	.085	.024	.172	.084	.024	.166	.082	.023	.161	.081	.023	.155	.079	.023	
9.0	.165	.079	.022	.162	.078	.022	.156	.077	.022	.151	.075	.021	.147	.074	.021	
10.0	.165	.079	.022	.162	.078	.022	.156	.077	.022	.151	.075	.021	.147	.074	.021	

□cc	80%			70%			50%			30%			10%			0
□w	50%	30%	10%	50%	30%	10%	50%	30%	10%	50%	30%	10%	50%	30%	10%	0
□fc	20%			20%			20%			20%			20%			0
RCR	RCR:Room Cavity Ratio						Ceiling Cavity Exitance Coefficients(CCEC)									
0.0	.208	.208	.208	.177	.177	.177	.121	.121	.121	.070	.070	.070	.022	.022	.022	
1.0	.198	.173	.151	.170	.149	.130	.116	.102	.090	.067	.059	.052	.021	.019	.017	
2.0	.191	.149	.114	.163	.128	.099	.112	.089	.069	.065	.052	.040	.021	.017	.013	
3.0	.183	.132	.091	.157	.114	.079	.108	.079	.055	.062	.046	.033	.020	.015	.011	
4.0	.175	.119	.075	.150	.102	.065	.103	.071	.046	.060	.042	.027	.019	.014	.009	
5.0	.168	.108	.064	.144	.094	.056	.099	.065	.039	.058	.038	.023	.019	.013	.008	
6.0	.161	.100	.056	.138	.087	.049	.095	.061	.035	.055	.036	.021	.018	.012	.007	
7.0	.154	.093	.051	.132	.081	.044	.091	.057	.031	.053	.033	.019	.017	.011	.006	
8.0	.147	.087	.046	.127	.076	.040	.088	.053	.029	.051	.031	.017	.017	.010	.006	
9.0	.141	.082	.043	.122	.072	.037	.084	.050	.026	.049	.030	.016	.016	.010	.005	
10.0	.135	.078	.040	.117	.068	.035	.081	.048	.025	.047	.028	.015	.015	.009	.005	

C Range: 0 - 360DEG  
 C Interval: 15.0DEG  
 Test Speed: HIGH  
 Temperature:25.3°C  
 Operators:DAMIN  
 Test Date:2023-08-05

□ Range: 0 - 180DEG  
 □ Interval: 1.0DEG  
 Test System:EVERFINE GO-2000B\_V1 SYSTEM V2.00.471  
 Humidity:65.0%  
 Test Distance:4.880m [K=1.0000]  
 Remarks:

**UGR(Unified Glare Rating) Table**

ceiling/cavity	0.7	0.7	0.5	0.5	0.3	0.7	0.7	0.5	0.5	0.3
walls	0.5	0.3	0.5	0.3	0.3	0.5	0.3	0.5	0.3	0.3
working plane	0.2	0.2	0.2	0.2	0.2	0.2	0.2	0.2	0.2	0.2
Room dimensions	Viewed crosswise					Viewed endwise				
x = 2H y = 2H	25.5	27.0	25.8	27.3	27.5	25.4	27.0	25.7	27.2	27.4
3H	27.2	28.6	27.5	28.9	29.1	27.2	28.6	27.5	28.8	29.1
4H	27.9	29.2	28.2	29.5	29.8	27.9	29.2	28.2	29.5	29.8
6H	28.4	29.6	28.7	29.9	30.3	28.4	29.7	28.8	30.0	30.3
8H	28.5	29.8	28.9	30.1	30.4	28.7	29.9	29.0	30.2	30.5
12H	28.7	29.8	29.1	30.2	30.5	28.8	30.0	29.2	30.3	30.7
4H 2H	26.3	27.6	26.6	27.9	28.2	26.2	27.5	26.5	27.8	28.1
3H	28.1	29.3	28.5	29.6	30.0	28.1	29.3	28.5	29.6	30.0
4H	28.9	30.0	29.4	30.4	30.8	29.0	30.0	29.4	30.4	30.8
6H	29.6	30.6	30.0	30.9	31.4	29.7	30.6	30.1	31.0	31.5
8H	29.8	30.7	30.3	31.1	31.6	30.0	30.9	30.4	31.3	31.7
12H	30.0	30.9	30.5	31.3	31.7	30.2	31.0	30.7	31.5	31.9
8H 4H	29.3	30.2	29.8	30.6	31.1	29.4	30.2	29.8	30.6	31.1
6H	30.2	30.9	30.7	31.4	31.8	30.3	31.0	30.8	31.5	31.9
8H	30.6	31.2	31.1	31.7	32.2	30.7	31.3	31.2	31.8	32.3
12H	30.9	31.4	31.4	31.9	32.5	31.0	31.6	31.6	32.1	32.6
12H 4H	29.4	30.2	29.8	30.6	31.1	29.4	30.2	29.9	30.6	31.1
6H	30.3	31.0	30.8	31.4	31.9	30.4	31.0	30.9	31.5	32.0
8H	30.7	31.3	31.3	31.8	32.3	30.9	31.4	31.4	31.9	32.4
Variations with the observer position at spacings(CIE Pub.117):										
S = 1.0H	+ 0.1 / - 0.2					+ 0.1 / - 0.2				
1.5H	+ 0.2 / - 0.3					+ 0.2 / - 0.4				
2.0H	+ 0.2 / - 0.4					+ 0.2 / - 0.5				

CIE Pub.117, 1071 lm Total Lamp Luminous Flux Correct (8log(F/F0) = 0.2)  
 Area: 0.01 m2

C Range: 0 - 360DEG  
 C Interval: 15.0DEG  
 Test Speed: HIGH  
 Temperature:25.3°C  
 Operators:DAMIN  
 Test Date:2023-08-05

Range: 0 - 180DEG  
 Interval: 1.0DEG  
 Test System:EVERFINE GO-2000B\_V1 SYSTEM V2.00.471  
 Humidity:65.0%  
 Test Distance:4.880m [K=1.0000]  
 Remarks:

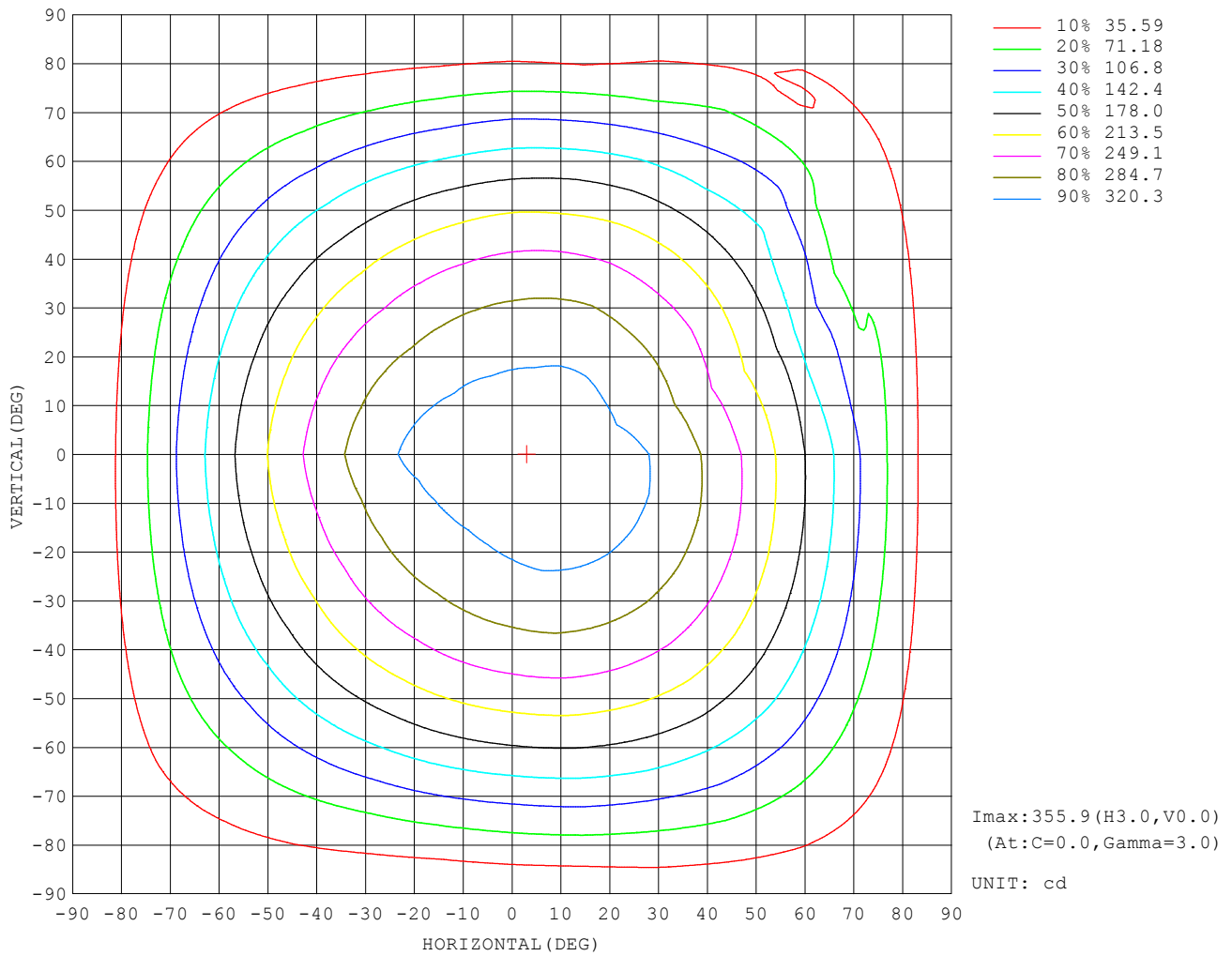
**UTILIZATION FACTORS TABLE**

REFLECTANCE										
Ceiling	0.8	0.8	0.8	0.7	0.7	0.7	0.5	0.5	0.5	0
Walls	0.7	0.5	0.3	0.7	0.5	0.3	0.7	0.5	0.3	0
Working plane	0.2	0.2	0.2	0.2	0.2	0.2	0.2	0.2	0.2	0
ROOM INDEX	UTILIZATION FACTORS (PERCENT) $k(RI) \times RCR = 5$									
$k = 0.60$	56	44	37	55	44	37	54	43	37	30
0.80	66	54	46	65	53	46	63	52	46	38
1.00	74	63	55	73	62	55	70	63	54	47
1.25	81	70	63	80	70	63	77	68	62	54
1.50	86	76	69	84	75	68	81	73	67	59
2.00	93	84	78	91	83	77	87	81	75	67
2.50	97	89	83	95	88	82	91	85	80	71
3.00	101	94	88	98	92	87	94	89	84	75
4.00	105	99	94	102	97	92	98	93	89	80
5.00	107	102	98	105	100	96	100	96	93	83
ROOM INDEX	UF(total)									Direct
According to DIN EN 13032-2 2004			Suspended				SHRNOM = 1.25			

C Range: 0 - 360DEG  
 C Interval: 15.0DEG  
 Test Speed: HIGH  
 Temperature: 25.3°C  
 Operators: DAMIN  
 Test Date: 2023-08-05

Range: 0 - 180DEG  
 Interval: 1.0DEG  
 Test System: EVERFINE GO-2000B\_V1 SYSTEM V2.00.471  
 Humidity: 65.0%  
 Test Distance: 4.880m [K=1.0000]  
 Remarks:

**ISOCANDELA DIAGRAM**

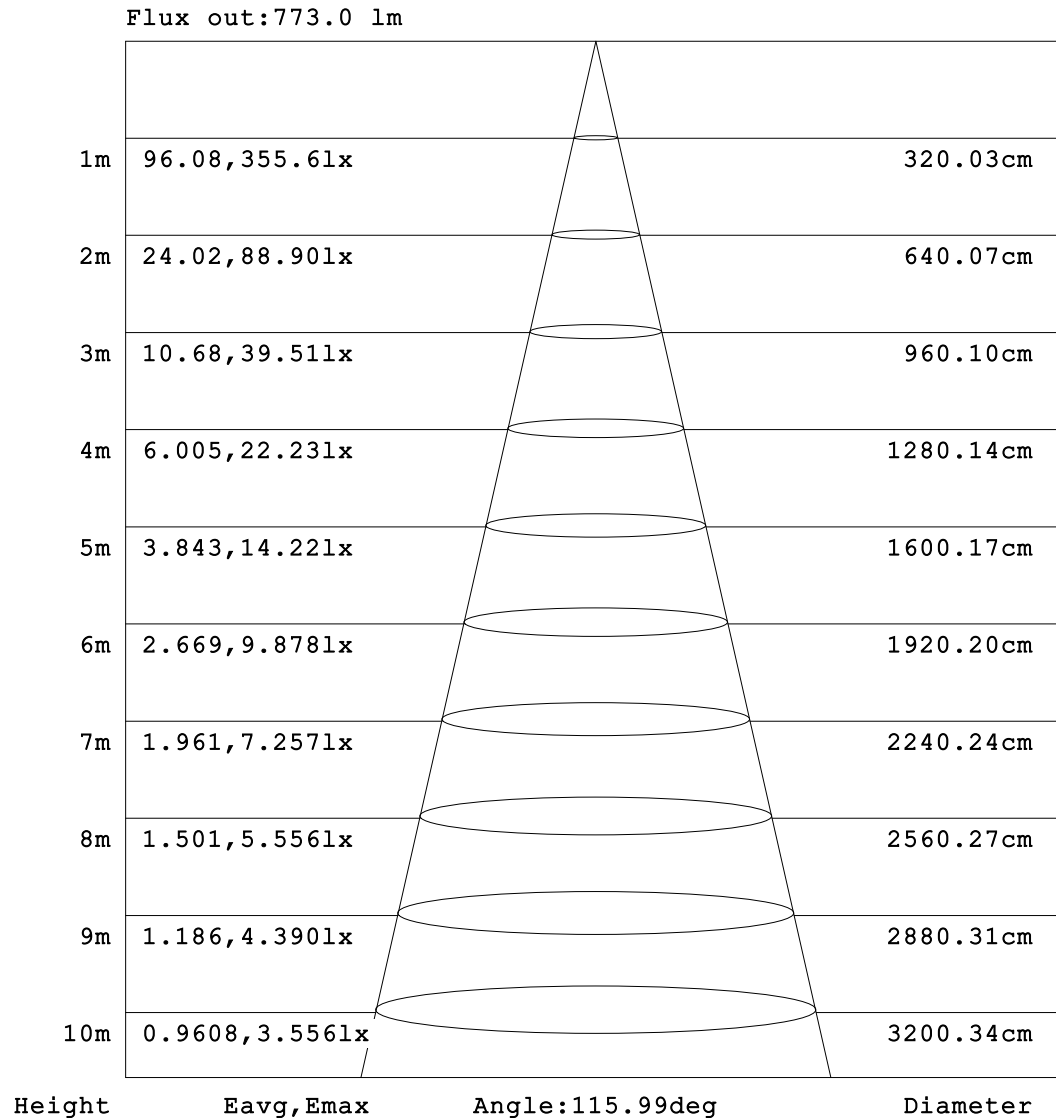


C Range: 0 - 360DEG  
 C Interval: 15.0DEG  
 Test Speed: HIGH  
 Temperature: 25.3°C  
 Operators: DAMIN  
 Test Date: 2023-08-05

Range: 0 - 180DEG  
 Interval: 1.0DEG  
 Test System: EVERFINE GO-2000B\_V1 SYSTEM V2.00.471  
 Humidity: 65.0%  
 Test Distance: 4.880m [K=1.0000]  
 Remarks:



**AAI Figure**

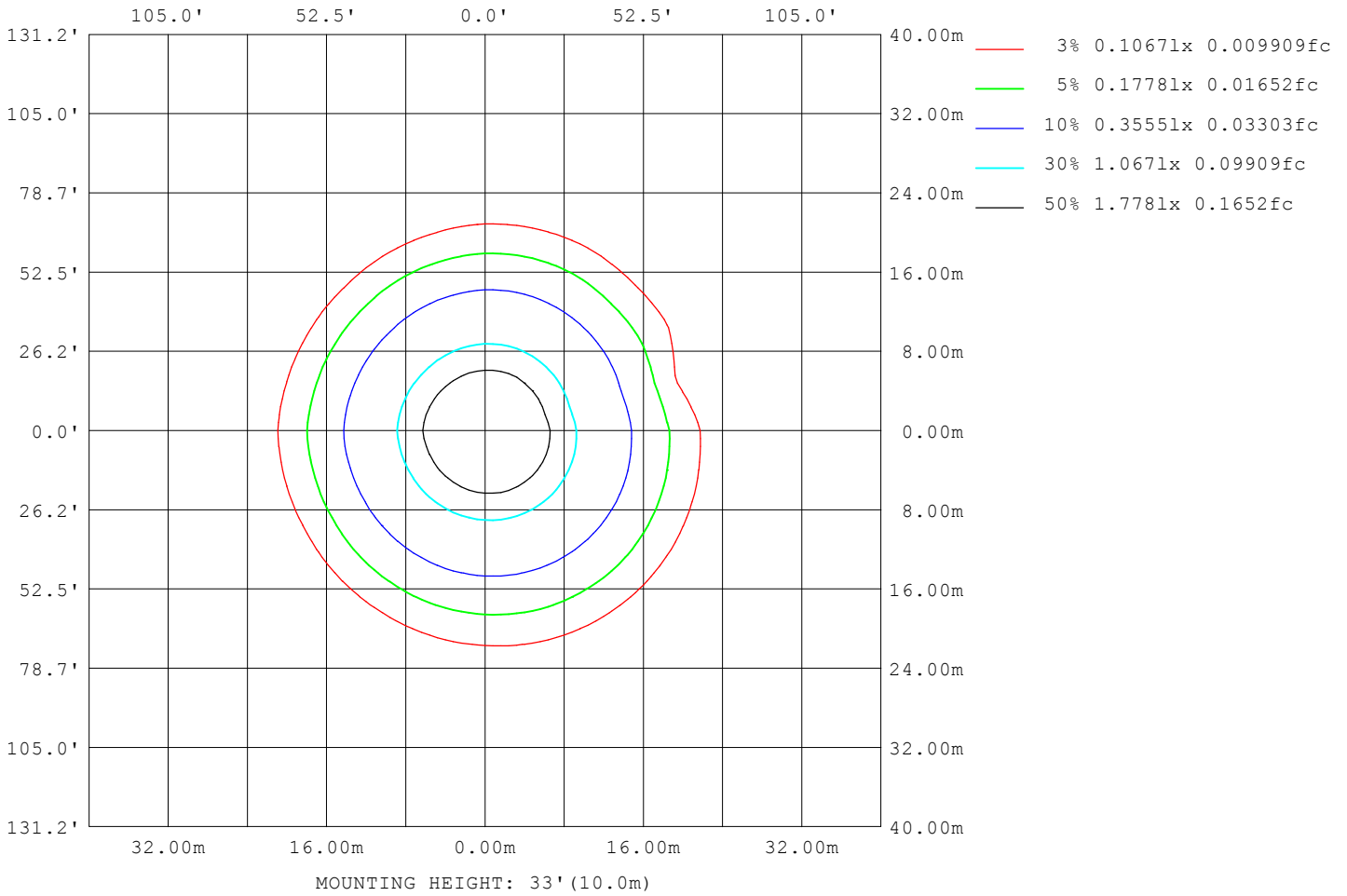


**Note:**The Curves indicate the illuminated area and the average illumination when the luminaire is at different distance.

C Range: 0 - 360DEG  
 C Interval: 15.0DEG  
 Test Speed: HIGH  
 Temperature:25.3°C  
 Operators:DAMIN  
 Test Date:2023-08-05

Range: 0 - 180DEG  
 Interval: 1.0DEG  
 Test System:EVERFINE GO-2000B\_V1 SYSTEM V2.00.471  
 Humidity:65.0%  
 Test Distance:4.880m [K=1.0000]  
 Remarks:

**ISOLUX DIAGRAM**



C Range: 0 - 360DEG  
 C Interval: 15.0DEG  
 Test Speed: HIGH  
 Temperature: 25.3°C  
 Operators: DAMIN  
 Test Date: 2023-08-05

Range: 0 - 180DEG  
 Interval: 1.0DEG  
 Test System: EVERFINE GO-2000B\_V1 SYSTEM V2.00.471  
 Humidity: 65.0%  
 Test Distance: 4.880m [K=1.0000]  
 Remarks:

LED Avg.L Report

NAME: LED Strip	TYPE: Indoor lighting	WEIGHT: 20g
SPEC.: LED	DIM.: 500*10*1.2mm	SERIAL No.: 20230804043
MFR.: EVERFINE	SUR.: 500*10mm	Shielding Angle:

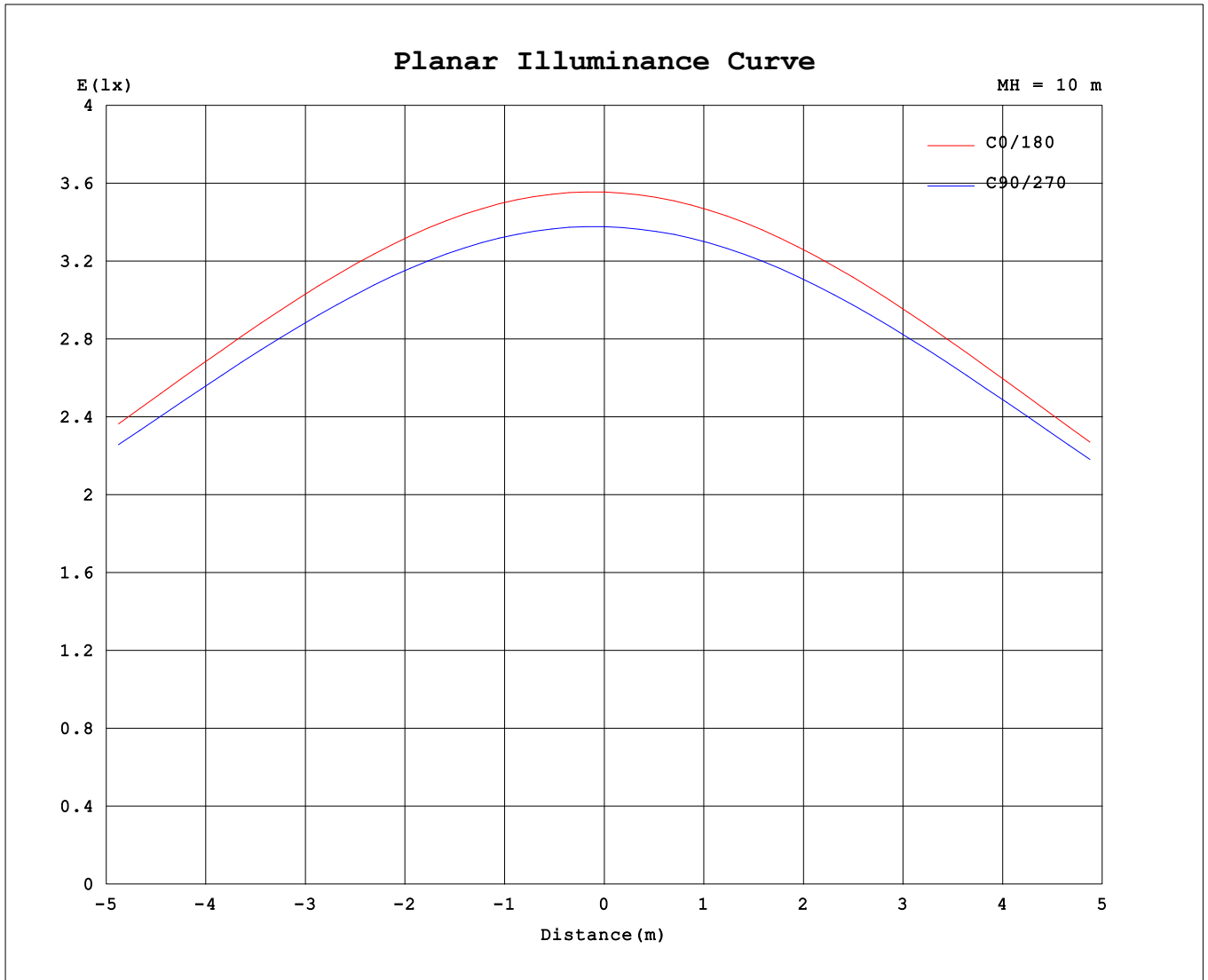
AvgL	cd/m2
L_0~180 (65) av	32837
L_0~180 (75) av	29370
L_0~180 (85) av	26738
L_90~270 (65) av	32622
L_90~270 (75) av	29567
L_90~270 (85) av	26249
L_45 (65) av	32023
L_45 (75) av	29543
L_45 (85) av	29274

Standard: GB/T 29293-2012

C Range: 0 - 360DEG  
 C Interval: 15.0DEG  
 Test Speed: HIGH  
 Temperature:25.3℃  
 Operators:DAMIN  
 Test Date:2023-08-05

Range: 0 - 180DEG  
 Interval: 1.0DEG  
 Test System:EVERFINE GO-2000B\_V1 SYSTEM V2.00.471  
 Humidity:65.0%  
 Test Distance:4.880m [K=1.0000]  
 Remarks:

**Planar Illuminance Curve**



C Range: 0 - 360DEG  
 C Interval: 15.0DEG  
 Test Speed: HIGH  
 Temperature: 25.3°C  
 Operators: DAMIN  
 Test Date: 2023-08-05

Range: 0 - 180DEG  
 Interval: 1.0DEG  
 Test System: EVERFINE GO-2000B\_V1 SYSTEM V2.00.471  
 Humidity: 65.0%  
 Test Distance: 4.880m [K=1.0000]  
 Remarks:

LUMINOUS DISTRIBUTION INTENSITY DATA

Table--1

UNIT: cd

C (DEG) \ □ (DEG)	0	15	30	45	60	75	90	105	120	135	150	165	180	195	210	225	240	255	270
0	356	353	348	345	343	340	338	337	338	340	343	347	356	353	348	345	343	340	338
5	356	354	349	346	344	341	338	336	336	337	340	344	353	349	344	341	339	337	336
10	353	352	348	346	343	340	335	333	332	333	335	338	348	343	338	334	333	331	331
15	347	348	344	342	339	335	330	327	325	325	327	330	340	334	329	325	324	323	324
20	339	341	338	336	332	329	323	319	316	316	317	320	329	323	318	314	313	313	315
25	328	331	329	327	323	319	313	308	305	304	304	307	316	309	304	300	300	301	303
30	315	318	317	315	312	308	301	296	291	290	289	292	300	293	288	283	284	286	289
35	298	303	303	301	298	293	286	280	275	273	272	274	282	275	269	265	266	269	273
40	279	285	286	285	281	276	269	263	257	254	252	254	262	254	248	244	246	249	255
45	258	264	266	266	262	257	249	243	237	233	230	233	239	231	225	222	224	228	234
50	234	241	244	244	240	235	227	221	214	210	206	209	214	206	201	198	201	205	211
55	207	215	219	219	216	211	202	196	189	185	181	183	188	180	174	172	175	179	185
60	178	185	191	192	189	184	176	169	162	158	154	155	159	151	147	145	147	151	157
65	148	155	161	162	160	155	147	140	134	130	126	127	130	122	118	116	118	122	129
70	115	122	129	130	129	125	117	111	104	101	97.5	98.0	99.3	92.4	88.7	86.6	88.5	91.7	97.9
75	82.8	89.9	95.3	98.1	95.6	92.7	86.2	80.2	75.0	72.7	70.0	69.8	69.2	63.5	60.1	58.4	59.4	62.2	66.8
80	52.2	58.1	63.2	66.1	64.2	61.1	56.6	51.0	48.4	47.6	45.9	45.2	41.6	37.4	35.3	33.5	33.3	34.4	38.0
85	26.9	32.2	36.2	37.2	37.2	33.5	30.8	27.8	27.3	27.2	25.8	25.5	19.7	17.7	16.5	14.6	13.8	13.2	14.9
90	11.5	15.4	18.7	19.0	18.4	16.2	11.7	14.1	14.5	14.4	13.5	13.5	6.65	5.65	5.01	4.12	3.55	2.87	1.45
95	5.20	7.66	10.5	11.3	9.14	10.6	1.47	7.27	10.3	10.4	10.2	10.2	2.63	2.46	2.19	1.92	1.59	1.35	1.34
100	3.16	4.15	6.04	7.85	6.88	8.47	1.57	1.37	7.86	9.38	9.73	10.2	2.06	1.88	1.60	1.50	1.44	1.42	1.42
105	2.28	2.91	4.21	6.15	5.94	4.76	1.69	1.43	1.93	8.21	9.26	9.99	1.67	1.62	1.62	1.63	1.64	1.63	1.63
110	1.85	2.28	3.27	4.87	4.78	2.30	1.73	1.64	1.65	4.43	8.48	9.57	1.78	1.79	1.83	1.85	1.86	1.85	1.87
115	1.85	1.98	2.73	1.93	4.40	3.29	1.90	1.83	1.82	2.07	5.20	8.44	1.99	2.01	2.05	2.07	2.08	2.08	2.10
120	2.03	2.03	2.38	3.43	2.12	3.37	2.08	2.01	2.02	2.03	2.45	4.83	2.20	2.23	2.27	2.29	2.30	2.30	2.33
125	2.22	2.20	2.19	2.84	3.65	2.29	2.24	2.24	2.23	2.24	2.25	2.63	2.40	2.44	2.48	2.50	2.51	2.52	2.54
130	2.42	2.39	2.35	2.44	2.32	2.35	2.39	2.42	2.42	2.44	2.42	2.42	2.61	2.65	2.68	2.70	2.72	2.73	2.76
135	2.62	2.58	2.56	2.52	2.53	2.56	2.59	2.62	2.62	2.68	2.64	2.58	2.81	2.85	2.88	2.90	2.92	2.94	2.97
140	2.83	2.79	2.74	2.73	2.73	2.76	2.80	2.83	2.86	2.92	2.85	2.82	3.01	3.04	3.07	3.09	3.10	3.13	3.17
145	3.03	3.02	2.95	2.94	2.93	2.97	3.00	3.02	3.10	3.16	3.09	3.05	3.20	3.23	3.26	3.27	3.29	3.31	3.36
150	3.24	3.22	3.16	3.15	3.13	3.17	3.19	3.22	3.35	3.40	3.34	3.19	3.39	3.41	3.43	3.44	3.46	3.49	3.54
155	3.44	3.42	3.36	3.34	3.33	3.36	3.38	3.41	3.60	3.65	3.59	3.46	3.57	3.57	3.60	3.60	3.62	3.66	3.71
160	3.64	3.61	3.56	3.53	3.52	3.54	3.55	3.58	3.83	3.90	3.85	3.77	3.75	3.73	3.75	3.75	3.77	3.81	3.86
165	3.82	3.79	3.74	3.71	3.69	3.77	3.96	3.95	4.08	4.17	4.14	4.13	3.92	3.87	3.89	3.88	3.91	3.94	4.00
170	3.98	3.96	3.90	3.88	3.92	4.00	4.09	4.21	4.34	4.44	4.47	4.54	4.05	4.00	4.00	3.99	4.02	4.05	4.12
175	4.11	4.09	4.03	4.03	4.04	4.11	4.19	4.32	4.46	4.64	4.86	5.08	4.15	4.10	4.09	4.07	4.10	4.13	4.21
180	4.19	4.17	4.13	4.12	4.13	4.18	4.26	4.41	5.35	5.56	5.08	5.61	4.19	4.15	4.14	4.11	4.13	4.17	4.26

C Range: 0 - 360DEG  
 C Interval: 15.0DEG  
 Test Speed: HIGH  
 Temperature:25.3℃  
 Operators:DAMIN  
 Test Date:2023-08-05

□ Range: 0 - 180DEG  
 □ Interval: 1.0DEG  
 Test System:EVERFINE GO-2000B\_V1 SYSTEM V2.00.471  
 Humidity:65.0%  
 Test Distance:4.880m [K=1.0000]  
 Remarks:

LUMINOUS DISTRIBUTION INTENSITY DATA

Table--2

UNIT: cd

C (DEG) \ φ (DEG)	285	300	315	330	345														
0	337	338	340	343	347														
5	336	337	340	343	345														
10	332	334	337	341	340														
15	326	329	332	334	333														
20	317	321	324	324	325														
25	306	311	312	312	313														
30	293	298	298	300	297														
35	278	282	282	283	284														
40	260	262	263	264	259														
45	238	242	241	245	238														
50	214	219	218	218	213														
55	189	191	193	193	189														
60	162	165	163	165	160														
65	132	135	134	138	107														
70	99.1	100	104	110	72.9														
75	67.4	68.7	76.6	74.8	62.3														
80	35.9	44.1	48.9	39.3	53.7														
85	15.9	23.9	23.0	32.4	29.4														
90	6.05	11.2	14.6	16.6	14.2														
95	2.08	4.86	7.68	9.24	7.36														
100	1.56	2.08	3.31	4.40	3.56														
105	1.68	1.85	2.10	2.32	2.60														
110	1.89	1.99	2.13	2.26	2.65														
115	2.11	2.18	2.28	2.37	2.85														
120	2.32	2.38	2.48	2.59	3.19														
125	2.54	2.59	2.71	2.85	3.91														
130	2.75	2.80	2.95	3.18	4.79														
135	2.96	3.01	3.21	3.81	5.78														
140	3.16	3.22	3.63	4.60	6.81														
145	3.35	3.44	4.27	5.51	7.61														
150	3.54	3.66	5.13	6.47	8.39														
155	3.72	4.04	6.00	7.30	8.95														
160	3.90	4.61	6.78	7.91	8.67														
165	4.08	5.24	7.47	8.60	8.36														
170	4.35	5.64	7.84	8.30	7.46														
175	4.62	5.61	7.36	7.63	5.87														
180	4.54	5.06	5.63	5.12	5.61														

C Range: 0 - 360DEG  
 C Interval: 15.0DEG  
 Test Speed: HIGH  
 Temperature: 25.3°C  
 Operators: DAMIN  
 Test Date: 2023-08-05

φ Range: 0 - 180DEG  
 φ Interval: 1.0DEG  
 Test System: EVERFINE GO-2000B\_V1 SYSTEM V2.00.471  
 Humidity: 65.0%  
 Test Distance: 4.880m [K=1.0000]  
 Remarks: