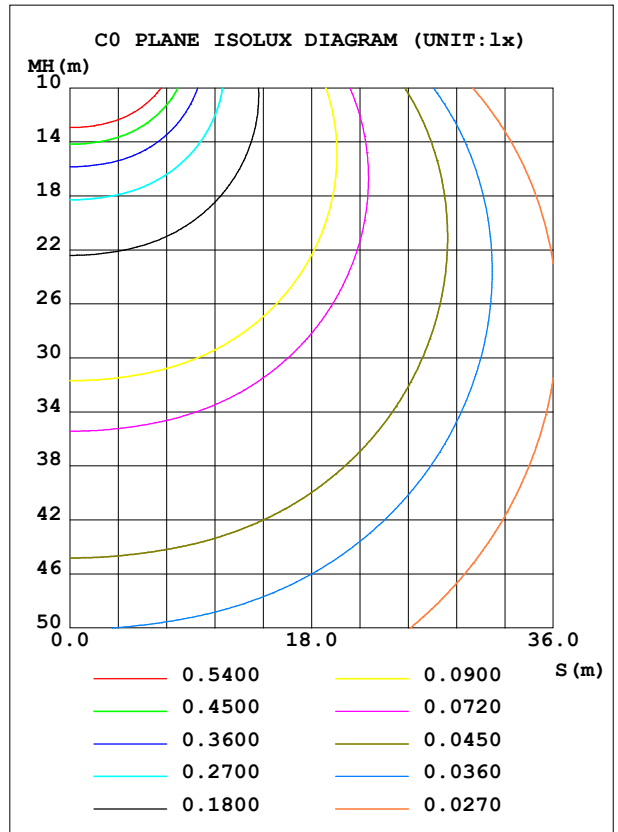
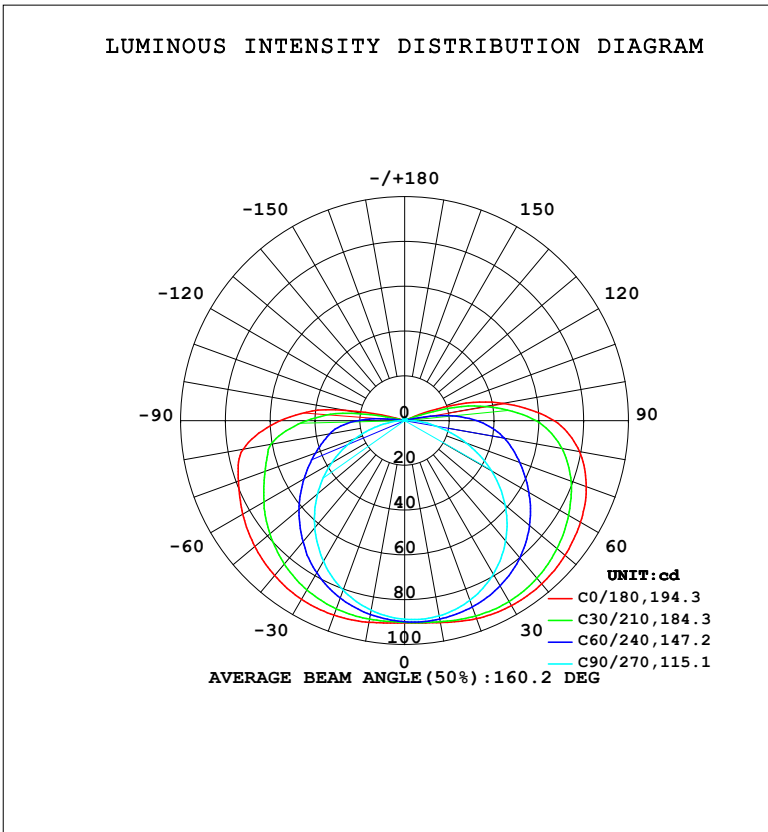


LUMINAIRE PHOTOMETRIC TEST REPORT

NAME: LED Strip	TYPE: Indoor lighting	WEIGHT: 20g
SPEC.: LED	DIM.: 500*10*1.9mm	SERIAL No.: 20211223004
MFR.: EVERFINE	SUR.: 500*10mm	Shielding Angle:

DATA OF LAMP		PHOTOMETRIC DATA			
NOBE24 (WCP) -UR-IC-EP-LD RGBW		Imax (cd)	95.53	S/MH (C0/180)	1.55
NOMINAL POWER (W)	10.6005	LOR (%)	100.0	S/MH (C90/270)	1.22
RATED VOLTAGE (V)	DC 24	TOTAL FLUX (lm)	454.86	<input type="checkbox"/> UP, DN (C0-180)	5.2, 47.7
NOMINAL FLUX (lm)	454.856	CIE CLASS	DIRECT	<input type="checkbox"/> UP, DN (C180-360)	4.3, 42.8
LAMPS INSIDE	1	<input type="checkbox"/> up (%)	9.6	CIBSE SHR NOM	1.50
TEST VOLTAGE (V)	DC 24	<input type="checkbox"/> down (%)	90.4	CIBSE SHR MAX	1.55



C Range: 0 - 360DEG
 C Interval: 15.0DEG
 Test Speed: HIGH
 Temperature: 25.3°C
 Operators: DAMIN
 Test Date: 2023-09-16

Range: 0 - 180DEG
 Interval: 1.0DEG
 Test System: EVERFINE GO-2000B_V1 SYSTEM V2.00.471
 Humidity: 65.0%
 Test Distance: 4.880m [K=1.0000]
 Remarks:

ZONAL FLUX DIAGRAM

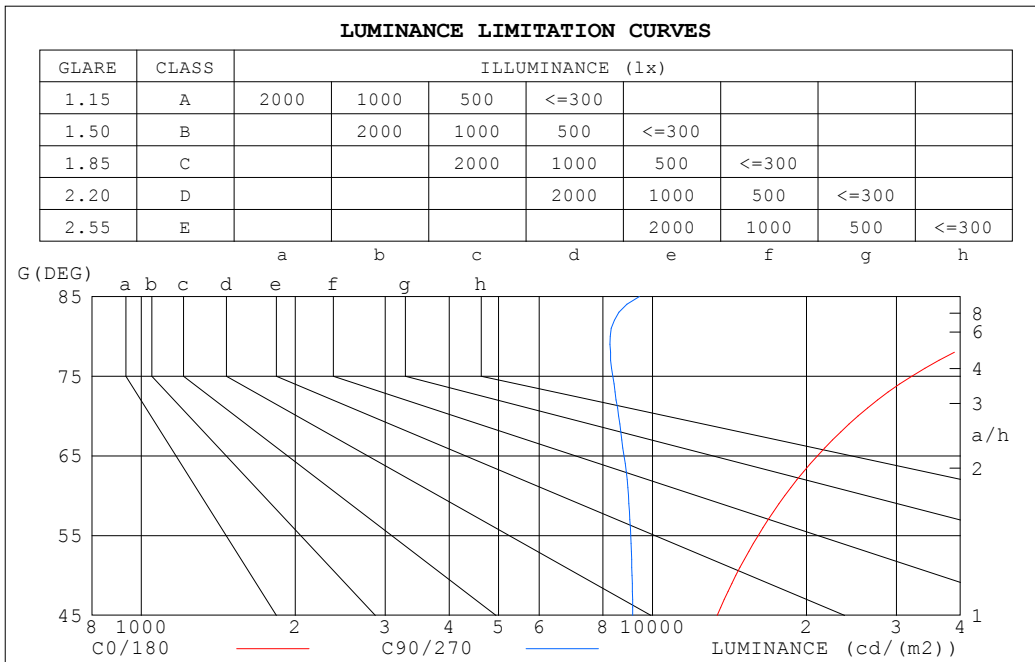
ZONAL FLUX DIAGRAM:

°	C0	C45	C90	C135	C180	C225	C270	C315	°	□ zone	□ total	%lum,lamp
10	91.57	90.87	88.53	88.63	91.42	89.28	85.98	86.66	0- 10	8.482	8.482	1.86,1.86
20	94.06	91.06	85.35	88.36	92.43	87.08	80.56	85.12	10- 20	25.01	33.49	7.36,7.36
30	95.42	89.94	79.18	86.12	92.16	82.91	72.48	82.41	20- 30	39.89	73.39	16.1,16.1
40	95.19	86.90	70.17	82.13	90.31	77.10	62.50	77.94	30- 40	51.70	125.1	27.5,27.5
50	93.55	82.02	58.60	76.39	87.38	70.00	50.75	72.01	40- 50	59.35	184.4	40.5,40.5
60	90.67	75.82	44.85	69.44	83.49	62.30	37.58	65.19	50- 60	62.64	247.1	54.3,54.3
70	86.33	68.63	29.34	62.28	79.01	54.61	23.52	57.89	60- 70	61.61	308.7	67.9,67.9
80	79.23	60.16	14.36	55.23	73.10	47.75	9.862	51.03	70- 80	56.65	365.3	80.3,80.3
90	66.84	47.64	3.208	38.29	55.60	32.17	0.7658	32.44	80- 90	46.07	411.4	90.4,90.4
100	44.67	26.79	0.6352	9.059	26.73	5.787	0.6128	23.17	90-100	28.38	439.8	96.7,96.7
110	15.36	2.086	0.6739	1.310	1.279	0.8824	0.7047	2.751	100-110	9.176	449.0	98.7,98.7
120	1.093	0.9116	0.7244	0.9473	1.026	0.8921	0.8248	2.125	110-120	1.849	450.8	99.1,99.1
130	1.007	0.8873	0.7781	0.9865	1.042	0.9558	0.9290	2.293	120-130	1.078	451.9	99.3,99.3
140	1.028	0.9252	0.8331	0.9179	1.061	1.012	1.029	2.442	130-140	0.9749	452.9	99.6,99.6
150	1.056	0.9902	0.9349	1.031	1.085	1.055	1.134	2.511	140-150	0.8240	453.7	99.7,99.7
160	1.098	1.063	1.037	1.164	1.121	1.105	1.229	2.520	150-160	0.6287	454.3	99.9,99.9
170	1.143	1.138	1.150	1.332	1.164	1.153	1.303	2.402	160-170	0.3984	454.7	100,100
180	1.187	1.191	1.327	1.795	1.189	1.190	1.322	1.859	170-180	0.1384	454.9	100,100
DEG	LUMINOUS INTENSITY:cd									UNIT:lm		

C Range: 0 - 360DEG
 C Interval: 15.0DEG
 Test Speed: HIGH
 Temperature:25.3°C
 Operators:DAMIN
 Test Date:2023-09-16

□ Range: 0 - 180DEG
 □ Interval: 1.0DEG
 Test System:EVERFINE GO-2000B_V1 SYSTEM V2.00.471
 Humidity:65.0%
 Test Distance:4.880m [K=1.0000]
 Remarks:

LUMINANCE LIMITATION CURVES



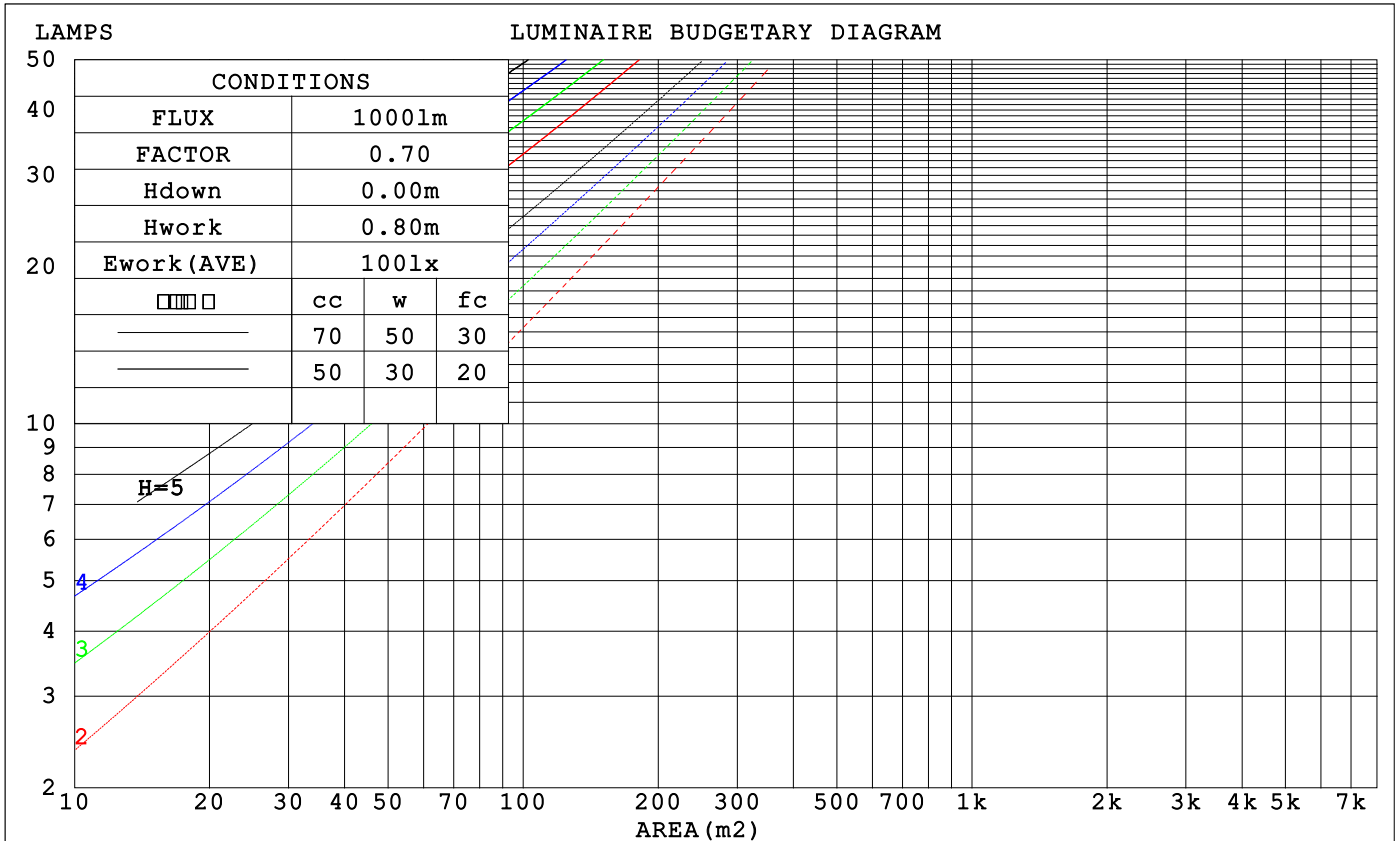
LUMINANCE cd/(m2)		
G (DEG)	C0/180	C90/270
85	84897	9419
80	45629	8269
75	32143	8357
70	25241	8577
65	21014	8788
60	18135	8969
55	16082	9059
50	14553	9117
45	13372	9149

C Range: 0 - 360DEG
 C Interval: 15.0DEG
 Test Speed: HIGH
 Temperature: 25.3°C
 Operators: DAMIN
 Test Date: 2023-09-16

Range: 0 - 180DEG
 Interval: 1.0DEG
 Test System: EVERFINE GO-2000B_V1 SYSTEM V2.00.471
 Humidity: 65.0%
 Test Distance: 4.880m [K=1.0000]
 Remarks:

CU AND LUMINAIRE BUDGETARY ESTIMATE DIAGRAM

□cc	80%			70%			50%			30%			10%			0
□w	50%	30%	10%	50%	30%	10%	50%	30%	10%	50%	30%	10%	50%	30%	10%	0
□fc	20%			20%			20%			20%			20%			0
RCR	RCR:Room Cavity Ratio						Coefficients of Utilization(CU)									
0.0	1.17	1.17	1.17	1.13	1.13	1.13	1.06	1.06	1.06	.99	.99	.99	.93	.93	.93	.90
1.0	.95	.89	.84	.92	.86	.81	.86	.81	.77	.80	.76	.73	.75	.72	.69	.66
2.0	.80	.72	.65	.78	.70	.63	.72	.66	.60	.67	.62	.57	.63	.58	.54	.51
3.0	.69	.59	.52	.67	.58	.51	.62	.55	.48	.58	.52	.46	.54	.49	.44	.41
4.0	.60	.50	.43	.58	.49	.42	.55	.46	.40	.51	.44	.38	.48	.42	.37	.34
5.0	.53	.43	.36	.52	.42	.35	.48	.40	.34	.45	.38	.33	.42	.36	.31	.29
6.0	.48	.38	.31	.46	.37	.30	.43	.35	.29	.41	.34	.28	.38	.32	.27	.25
7.0	.43	.33	.27	.42	.33	.26	.39	.31	.25	.37	.30	.25	.35	.28	.24	.21
8.0	.39	.30	.24	.38	.29	.23	.36	.28	.22	.34	.27	.22	.32	.26	.21	.19
9.0	.36	.27	.21	.35	.26	.21	.33	.25	.20	.31	.24	.19	.29	.23	.19	.17
10.0	.33	.24	.19	.32	.24	.18	.30	.23	.18	.29	.22	.17	.27	.21	.17	.15



C Range: 0 - 360DEG
 C Interval: 15.0DEG
 Test Speed: HIGH
 Temperature:25.3°C
 Operators:DAMIN
 Test Date:2023-09-16

□ Range: 0 - 180DEG
 □ Interval: 1.0DEG
 Test System:EVERFINE GO-2000B_V1 SYSTEM V2.00.471
 Humidity:65.0%
 Test Distance:4.880m [K=1.0000]
 Remarks:

WEC AND CCEC

□cc	80%			70%			50%			30%			10%			0
□w	50%	30%	10%	50%	30%	10%	50%	30%	10%	50%	30%	10%	50%	30%	10%	0
□fc	20%			20%			20%			20%			20%			0
RCR	RCR:Room Cavity Ratio						Wall Exitance Coefficients(WEC)									
0.0																
1.0	.432	.246	.078	.421	.240	.076	.402	.231	.074	.384	.222	.071	.368	.213	.069	
2.0	.366	.200	.061	.356	.196	.060	.339	.188	.059	.323	.181	.057	.308	.174	.055	
3.0	.320	.170	.051	.312	.167	.050	.296	.161	.049	.282	.154	.047	.268	.149	.046	
4.0	.285	.148	.044	.278	.145	.043	.264	.140	.042	.251	.135	.041	.239	.130	.039	
5.0	.257	.131	.038	.251	.129	.037	.238	.124	.036	.226	.119	.036	.215	.115	.035	
6.0	.234	.117	.034	.228	.115	.033	.217	.111	.032	.206	.107	.031	.196	.103	.031	
7.0	.215	.106	.030	.210	.104	.030	.199	.101	.029	.190	.097	.028	.180	.094	.028	
8.0	.199	.097	.027	.194	.095	.027	.184	.092	.026	.175	.089	.026	.167	.086	.025	
9.0	.185	.089	.025	.180	.088	.025	.171	.085	.024	.163	.082	.023	.156	.079	.023	
10.0	.172	.083	.023	.168	.081	.023	.160	.079	.022	.153	.076	.022	.146	.073	.021	

□cc	80%			70%			50%			30%			10%			0
□w	50%	30%	10%	50%	30%	10%	50%	30%	10%	50%	30%	10%	50%	30%	10%	0
□fc	20%			20%			20%			20%			20%			0
RCR	RCR:Room Cavity Ratio						Ceiling Cavity Exitance Coefficients(CCEC)									
0.0	.263	.263	.263	.225	.225	.225	.154	.154	.154	.088	.088	.088	.028	.028	.028	
1.0	.262	.228	.198	.224	.196	.170	.153	.135	.118	.088	.078	.069	.028	.025	.022	
2.0	.256	.205	.163	.219	.177	.141	.150	.122	.098	.087	.071	.058	.028	.023	.019	
3.0	.248	.189	.141	.213	.163	.123	.146	.113	.086	.084	.066	.051	.027	.021	.017	
4.0	.240	.176	.128	.206	.152	.111	.142	.106	.078	.082	.062	.046	.026	.020	.015	
5.0	.232	.167	.118	.199	.144	.103	.137	.101	.072	.080	.059	.043	.026	.019	.014	
6.0	.224	.158	.111	.193	.137	.097	.133	.096	.069	.077	.057	.041	.025	.018	.013	
7.0	.217	.152	.106	.187	.132	.093	.129	.092	.066	.075	.054	.039	.024	.018	.013	
8.0	.210	.146	.102	.181	.127	.089	.125	.089	.063	.073	.053	.038	.024	.017	.013	
9.0	.203	.141	.099	.175	.123	.087	.121	.086	.062	.071	.051	.037	.023	.017	.012	
10.0	.197	.137	.097	.170	.119	.085	.118	.084	.060	.069	.049	.036	.022	.016	.012	

C Range: 0 - 360DEG
 C Interval: 15.0DEG
 Test Speed: HIGH
 Temperature:25.3°C
 Operators:DAMIN
 Test Date:2023-09-16

□ Range: 0 - 180DEG
 □ Interval: 1.0DEG
 Test System:EVERFINE GO-2000B_V1 SYSTEM V2.00.471
 Humidity:65.0%
 Test Distance:4.880m [K=1.0000]
 Remarks:

UGR(Unified Glare Rating) Table

ceiling/cavity	0.7	0.7	0.5	0.5	0.3	0.7	0.7	0.5	0.5	0.3
walls	0.5	0.3	0.5	0.3	0.3	0.5	0.3	0.5	0.3	0.3
working plane	0.2	0.2	0.2	0.2	0.2	0.2	0.2	0.2	0.2	0.2
Room dimensions	Viewed crosswise					Viewed endwise				
x = 2H y = 2H	25.6	27.2	26.0	27.6	28.0	22.7	24.3	23.1	24.7	25.1
3H	28.7	30.1	29.1	30.6	31.0	24.4	25.9	24.9	26.3	26.8
4H	30.4	31.8	30.9	32.2	32.7	25.2	26.6	25.6	27.0	27.5
6H	32.3	33.6	32.7	34.0	34.5	25.8	27.1	26.3	27.6	28.1
8H	33.3	34.6	33.8	35.0	35.5	26.1	27.4	26.6	27.8	28.3
12H	34.4	35.7	34.9	36.1	36.7	26.3	27.5	26.8	28.0	28.5
4H 2H	26.3	27.7	26.7	28.1	28.6	24.3	25.7	24.8	26.2	26.6
3H	29.6	30.9	30.1	31.3	31.9	26.4	27.6	26.9	28.1	28.6
4H	31.5	32.7	32.1	33.2	33.7	27.4	28.5	27.9	29.0	29.6
6H	33.6	34.7	34.2	35.2	35.8	28.2	29.2	28.7	29.8	30.3
8H	34.8	35.7	35.3	36.3	36.9	28.5	29.5	29.1	30.1	30.7
12H	36.0	37.0	36.6	37.5	38.1	28.8	29.7	29.4	30.3	30.9
8H 4H	32.0	32.9	32.5	33.5	34.1	28.9	29.8	29.4	30.4	31.0
6H	34.4	35.2	35.0	35.8	36.4	30.2	31.0	30.8	31.6	32.2
8H	35.8	36.5	36.4	37.1	37.8	30.8	31.5	31.4	32.1	32.8
12H	37.3	38.0	37.9	38.6	39.3	31.3	32.0	31.9	32.6	33.3
12H 4H	32.0	32.9	32.6	33.5	34.1	29.3	30.3	29.9	30.8	31.4
6H	34.5	35.3	35.1	35.9	36.6	30.9	31.7	31.5	32.3	32.9
8H	36.0	36.7	36.7	37.3	38.0	31.8	32.4	32.4	33.0	33.7
Variations with the observer position at spacings(CIE Pub.117):										
S = 1.0H	+ 0.1 / - 0.1					+ 0.1 / - 0.1				
1.5H	+ 0.2 / - 0.3					+ 0.2 / - 0.2				
2.0H	+ 0.3 / - 0.4					+ 0.3 / - 0.4				

CIE Pub.117, 454.9 lm Total Lamp Luminous Flux Correct (8log(F/F0) = -2.7)
 Area: 0.01 m2

C Range: 0 - 360DEG
 C Interval: 15.0DEG
 Test Speed: HIGH
 Temperature:25.3°C
 Operators:DAMIN
 Test Date:2023-09-16

Range: 0 - 180DEG
 Interval: 1.0DEG
 Test System:EVERFINE GO-2000B_V1 SYSTEM V2.00.471
 Humidity:65.0%
 Test Distance:4.880m [K=1.0000]
 Remarks:

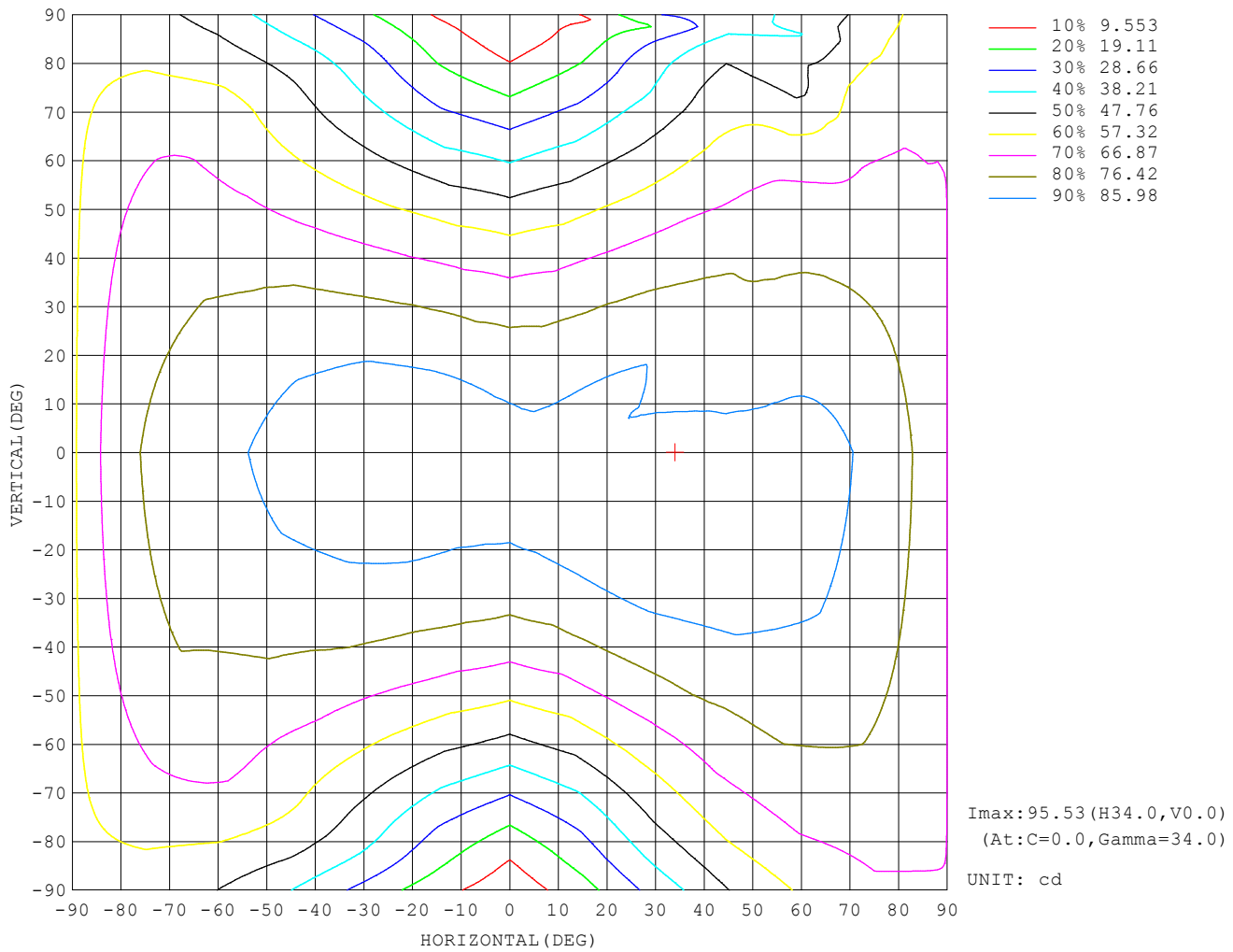
UTILIZATION FACTORS TABLE

REFLECTANCE										
Ceiling	0.8	0.8	0.8	0.7	0.7	0.7	0.5	0.5	0.5	0
Walls	0.7	0.5	0.3	0.7	0.5	0.3	0.7	0.5	0.3	0
Working plane	0.2	0.2	0.2	0.2	0.2	0.2	0.2	0.2	0.2	0
ROOM INDEX	UTILIZATION FACTORS (PERCENT) $k(RI) \times RCR = 5$									
$k = 0.60$	48	35	27	47	34	27	45	34	27	20
0.80	57	43	35	55	43	34	53	41	34	26
1.00	64	51	42	63	50	42	60	51	41	32
1.25	71	58	49	69	57	48	66	55	47	38
1.50	76	63	54	74	62	54	70	60	52	43
2.00	84	72	63	81	70	62	77	67	60	50
2.50	88	77	69	86	76	68	81	72	65	54
3.00	92	82	74	89	80	73	84	76	70	59
4.00	97	89	81	94	86	80	88	82	76	64
5.00	100	93	86	97	90	84	91	85	80	68
ROOM INDEX	UF (total)									Direct
According to DIN EN 13032-2 2004			Suspended				SHRNOM = 1.25			

C Range: 0 - 360DEG
 C Interval: 15.0DEG
 Test Speed: HIGH
 Temperature: 25.3°C
 Operators: DAMIN
 Test Date: 2023-09-16

Range: 0 - 180DEG
 Interval: 1.0DEG
 Test System: EVERFINE GO-2000B_V1 SYSTEM V2.00.471
 Humidity: 65.0%
 Test Distance: 4.880m [K=1.0000]
 Remarks:

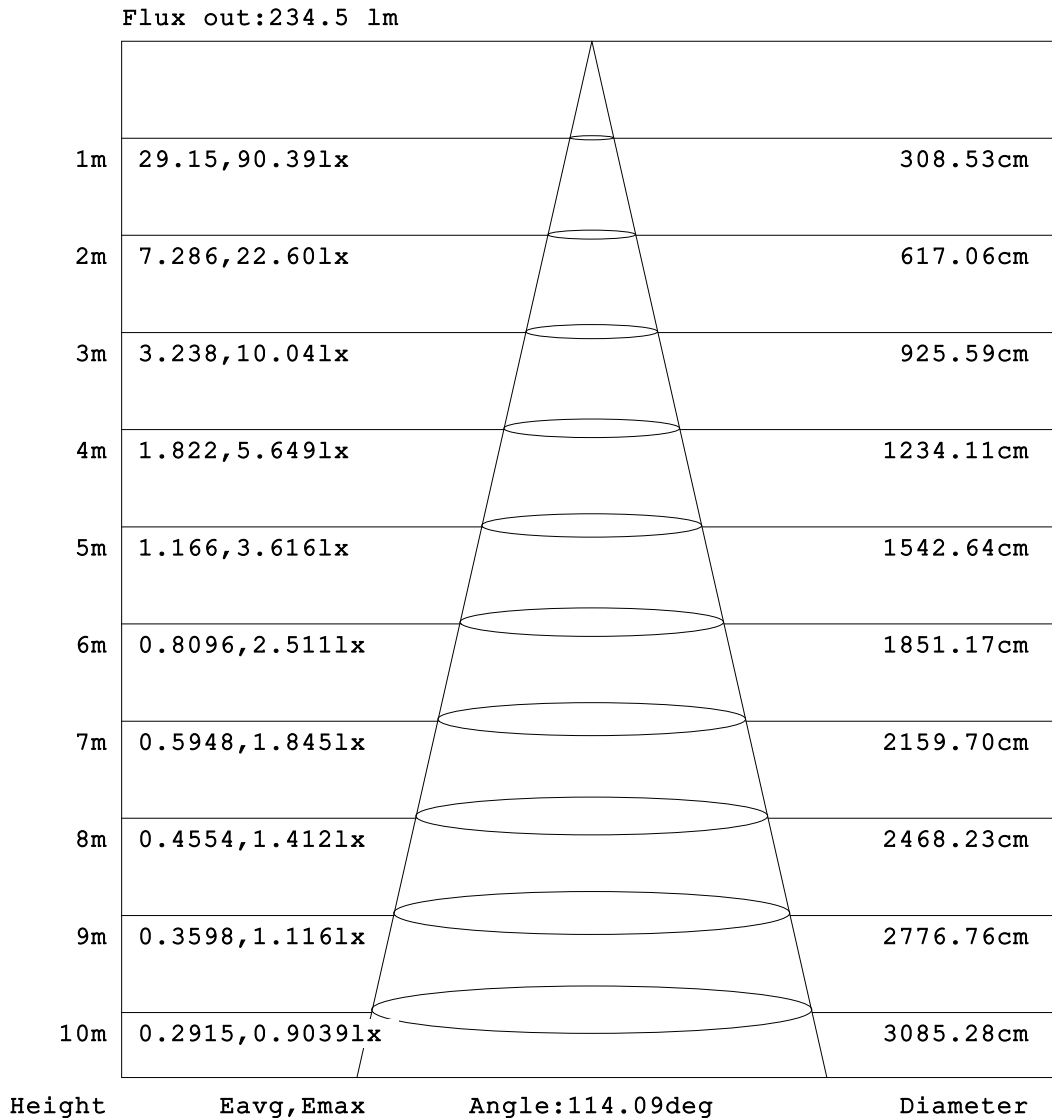
ISOCANDELA DIAGRAM



C Range: 0 - 360DEG
 C Interval: 15.0DEG
 Test Speed: HIGH
 Temperature: 25.3°C
 Operators: DAMIN
 Test Date: 2023-09-16

Range: 0 - 180DEG
 Interval: 1.0DEG
 Test System: EVERFINE GO-2000B_V1 SYSTEM V2.00.471
 Humidity: 65.0%
 Test Distance: 4.880m [K=1.0000]
 Remarks:

AAI Figure

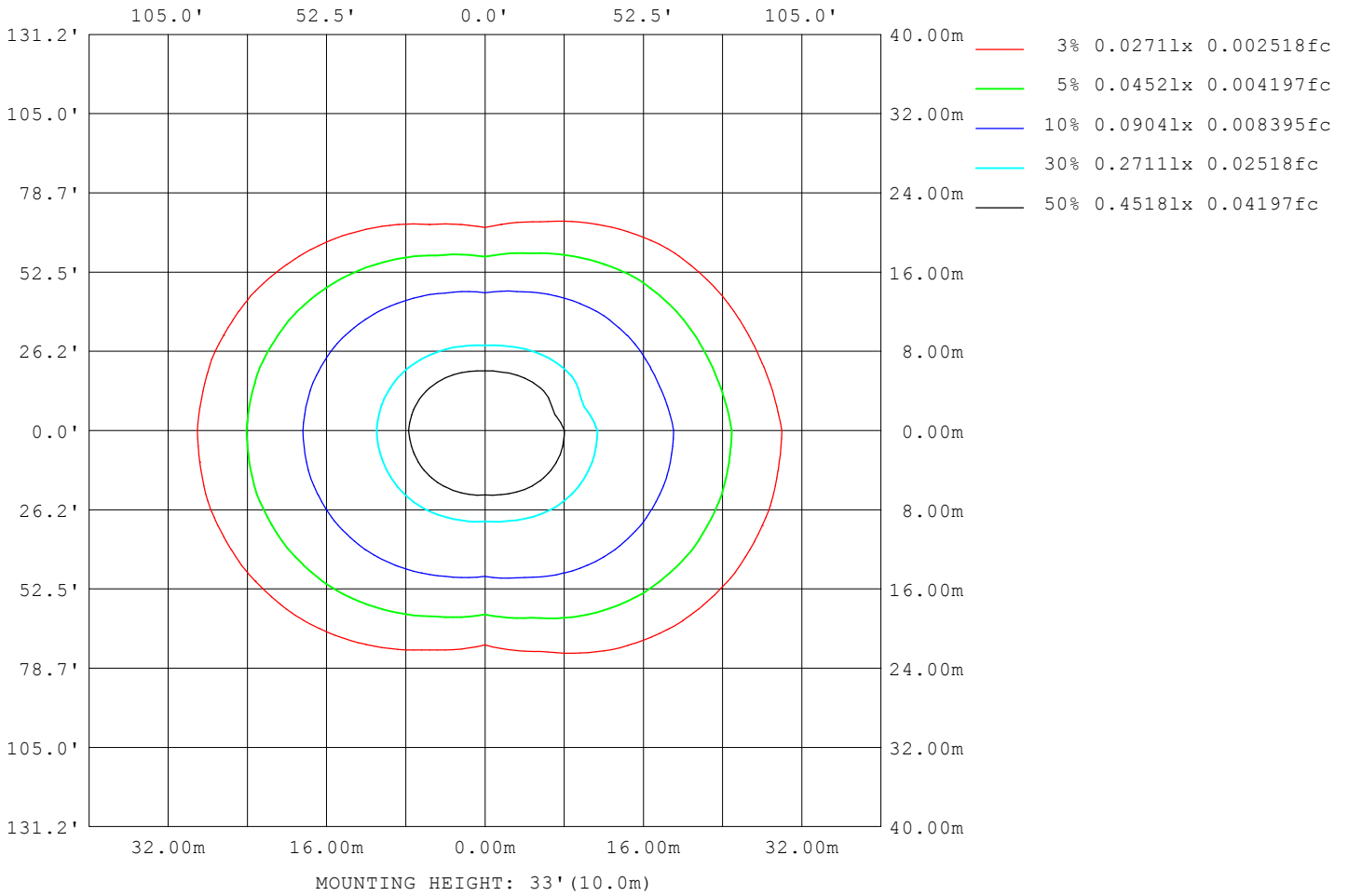


Note:The Curves indicate the illuminated area and the average illumination when the luminaire is at different distance.

C Range: 0 - 360DEG
 C Interval: 15.0DEG
 Test Speed: HIGH
 Temperature:25.3°C
 Operators:DAMIN
 Test Date:2023-09-16

Range: 0 - 180DEG
 Interval: 1.0DEG
 Test System:EVERFINE GO-2000B_V1 SYSTEM V2.00.471
 Humidity:65.0%
 Test Distance:4.880m [K=1.0000]
 Remarks:

ISOLUX DIAGRAM



C Range: 0 - 360DEG
 C Interval: 15.0DEG
 Test Speed: HIGH
 Temperature: 25.3°C
 Operators: DAMIN
 Test Date: 2023-09-16

Range: 0 - 180DEG
 Interval: 1.0DEG
 Test System: EVERFINE GO-2000B_V1 SYSTEM V2.00.471
 Humidity: 65.0%
 Test Distance: 4.880m [K=1.0000]
 Remarks:

LED Avg.L Report

NAME: LED Strip	TYPE: Indoor lighting	WEIGHT: 20g
SPEC.: LED	DIM.: 500*10*1.9mm	SERIAL No.: 20211223004
MFR.: EVERFINE	SUR.: 500*10mm	Shielding Angle:

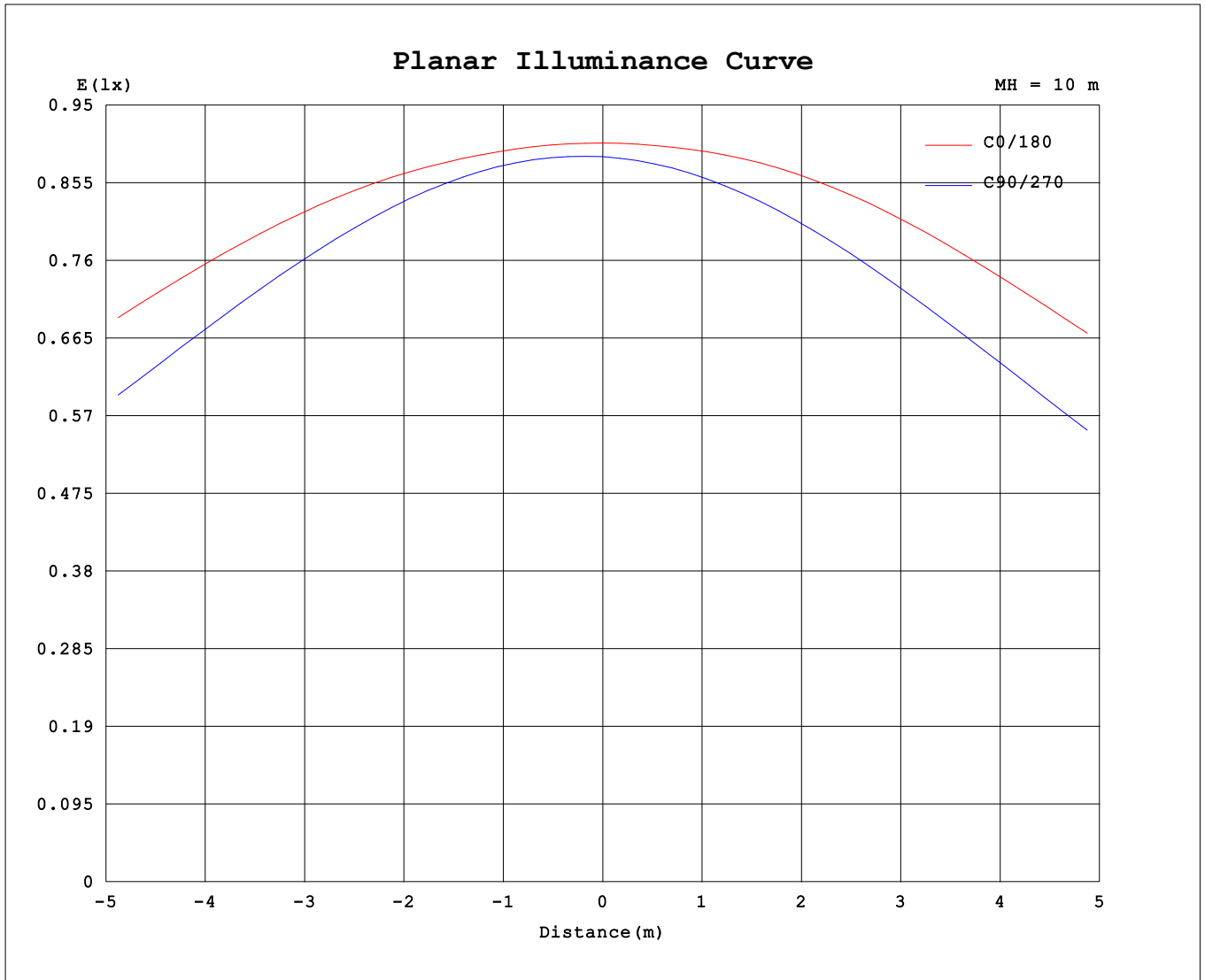
AvgL	cd/m2
L_0~180 (65) av	20115
L_0~180 (75) av	30935
L_0~180 (85) av	79968
L_90~270 (65) av	8017
L_90~270 (75) av	7371
L_90~270 (85) av	7182
L_45 (65) av	15275
L_45 (75) av	22194
L_45 (85) av	53939

Standard: GB/T 29293-2012

C Range: 0 - 360DEG
 C Interval: 15.0DEG
 Test Speed: HIGH
 Temperature:25.3°C
 Operators:DAMIN
 Test Date:2023-09-16

Range: 0 - 180DEG
 Interval: 1.0DEG
 Test System:EVERFINE GO-2000B_V1 SYSTEM V2.00.471
 Humidity:65.0%
 Test Distance:4.880m [K=1.0000]
 Remarks:

Planar Illuminance Curve



C Range: 0 - 360DEG
 C Interval: 15.0DEG
 Test Speed: HIGH
 Temperature: 25.3°C
 Operators: DAMIN
 Test Date: 2023-09-16

Range: 0 - 180DEG
 Interval: 1.0DEG
 Test System: EVERFINE GO-2000B_V1 SYSTEM V2.00.471
 Humidity: 65.0%
 Test Distance: 4.880m [K=1.0000]
 Remarks:

LUMINOUS DISTRIBUTION INTENSITY DATA

Table--1

UNIT: cd

C (DEG) \ □ (DEG)	0	15	30	45	60	75	90	105	120	135	150	165	180	195	210	225	240	255	270
0	90.4	90.4	90.1	90.3	89.8	89.3	88.7	88.3	87.7	87.8	88.0	86.8	90.4	90.4	90.1	90.3	89.8	89.3	88.7
5	90.7	90.8	90.5	90.7	90.1	89.6	89.0	88.6	88.1	88.2	88.5	87.6	90.6	90.5	89.9	89.8	89.0	88.3	87.7
10	91.6	91.7	91.2	90.9	90.0	89.3	88.5	88.3	88.1	88.6	89.1	88.7	91.4	91.0	90.0	89.3	87.9	86.7	86.0
15	92.9	92.9	92.1	91.0	89.5	88.3	87.3	87.4	87.7	88.7	89.5	89.6	92.1	91.3	89.9	88.4	86.3	84.5	83.6
20	94.1	94.0	92.8	91.1	88.5	86.5	85.3	85.8	86.7	88.4	89.5	90.0	92.4	91.2	89.4	87.1	84.3	81.7	80.6
25	94.9	94.9	93.3	90.7	87.1	84.1	82.6	83.6	85.1	87.5	89.2	90.2	92.5	90.9	88.5	85.2	81.7	78.4	76.9
30	95.4	95.2	93.2	89.9	85.3	81.1	79.2	80.7	83.0	86.1	88.5	90.0	92.2	90.2	87.3	82.9	78.5	74.6	72.5
35	95.5	95.2	92.8	88.7	82.9	77.6	75.0	77.1	80.3	84.3	87.4	89.4	91.4	89.3	85.7	80.2	74.9	70.2	67.7
40	95.2	94.8	91.9	86.9	80.0	73.4	70.2	72.7	77.0	82.1	85.9	88.4	90.3	87.8	83.6	77.1	70.6	65.4	62.5
45	94.6	94.0	90.5	84.7	76.7	68.6	64.7	67.9	73.3	79.5	84.0	87.2	89.0	86.2	81.2	73.7	66.2	60.2	56.8
50	93.5	92.9	88.9	82.0	72.8	63.3	58.6	62.6	69.1	76.4	82.0	85.7	87.4	84.4	78.6	70.0	61.6	54.7	50.7
55	92.2	91.4	86.9	79.0	68.6	57.6	52.0	56.8	64.6	72.9	79.6	83.9	85.5	82.2	75.7	66.2	56.8	48.7	44.3
60	90.7	89.6	84.5	75.8	64.0	51.6	44.8	50.6	59.8	69.4	77.1	82.0	83.5	80.0	72.5	62.3	51.9	42.7	37.6
65	88.8	87.6	82.0	72.2	59.4	45.2	37.1	44.2	55.0	65.9	74.4	79.8	81.2	77.4	69.4	58.4	47.1	36.3	30.6
70	86.3	85.0	79.1	68.6	54.7	38.8	29.3	37.7	50.2	62.3	71.6	77.7	79.0	75.0	66.3	54.6	42.4	30.3	23.5
75	83.2	81.8	75.5	64.8	50.1	32.6	21.6	31.4	45.6	59.0	69.2	75.6	76.9	72.7	63.7	51.2	38.0	24.5	16.5
80	79.2	77.8	71.3	60.2	45.2	27.0	14.4	25.6	41.4	55.2	65.2	71.2	73.1	68.9	60.5	47.8	34.0	19.3	9.86
85	74.0	72.3	65.8	54.6	39.3	21.5	8.21	20.3	35.0	48.1	57.4	62.9	65.4	61.1	53.2	41.2	28.8	14.5	4.31
90	66.8	65.2	58.7	47.6	32.3	15.4	3.21	13.0	25.8	38.3	47.7	52.9	55.6	51.5	43.8	32.2	20.8	8.62	0.77
95	56.3	54.8	48.4	37.8	23.4	7.63	0.64	2.97	14.6	27.5	36.6	41.6	44.1	40.3	33.3	22.5	10.9	0.78	0.60
100	44.7	43.1	36.8	26.8	11.6	1.78	0.64	0.83	2.57	9.06	17.8	23.9	26.7	22.5	15.8	5.79	0.99	0.64	0.61
105	31.7	30.0	23.1	12.1	2.14	1.33	0.64	0.73	1.13	2.49	3.83	6.89	7.29	4.57	1.79	1.00	0.75	0.64	0.64
110	15.4	13.8	7.78	2.09	1.48	1.06	0.67	0.64	0.83	1.31	2.60	3.56	1.28	1.21	1.05	0.88	0.74	0.68	0.70
115	3.02	2.40	1.53	1.14	1.19	0.93	0.72	0.68	0.82	0.95	1.73	2.96	1.06	1.04	0.96	0.86	0.78	0.73	0.76
120	1.09	1.03	1.01	0.91	1.03	0.88	0.72	0.73	0.84	0.95	1.23	2.19	1.03	1.02	0.98	0.89	0.83	0.79	0.82
125	1.02	0.98	0.92	0.87	0.97	0.78	0.75	0.75	0.85	0.96	1.17	1.48	1.03	1.02	0.99	0.93	0.88	0.84	0.88
130	1.01	0.98	0.93	0.89	0.93	0.81	0.78	0.78	0.87	0.99	1.19	1.32	1.04	1.03	1.01	0.96	0.92	0.90	0.93
135	1.01	1.00	0.95	0.92	0.86	0.80	0.78	0.78	0.85	0.94	1.16	1.32	1.05	1.04	1.03	0.98	0.96	0.94	0.98
140	1.03	1.02	0.97	0.93	0.87	0.85	0.83	0.84	0.86	0.92	1.12	1.28	1.06	1.05	1.04	1.01	1.00	0.99	1.03
145	1.04	1.04	0.99	0.96	0.91	0.90	0.88	0.91	0.92	0.95	1.02	1.28	1.07	1.06	1.06	1.03	1.03	1.04	1.08
150	1.06	1.06	1.01	0.99	0.95	0.95	0.93	0.96	0.97	1.03	1.03	1.25	1.08	1.07	1.08	1.06	1.07	1.09	1.13
155	1.07	1.08	1.04	1.03	0.99	1.00	0.99	1.02	1.03	1.07	1.17	1.08	1.10	1.09	1.10	1.09	1.11	1.13	1.19
160	1.10	1.10	1.07	1.06	1.04	1.05	1.04	1.07	1.09	1.16	1.24	1.16	1.12	1.10	1.12	1.11	1.14	1.17	1.23
165	1.12	1.12	1.10	1.10	1.09	1.10	1.09	1.12	1.14	1.25	1.30	1.28	1.14	1.12	1.14	1.13	1.17	1.20	1.27
170	1.14	1.15	1.13	1.14	1.13	1.15	1.15	1.17	1.19	1.33	1.46	1.43	1.16	1.15	1.16	1.15	1.20	1.23	1.30
175	1.17	1.17	1.16	1.18	1.19	1.24	1.31	1.41	1.51	1.64	1.64	1.70	1.18	1.16	1.17	1.17	1.21	1.25	1.32
180	1.19	1.18	1.18	1.19	1.22	1.25	1.33	1.48	1.68	1.80	2.04	2.13	1.19	1.17	1.17	1.19	1.21	1.25	1.32

C Range: 0 - 360DEG
 C Interval: 15.0DEG
 Test Speed: HIGH
 Temperature:25.3°C
 Operators:DAMIN
 Test Date:2023-09-16

□ Range: 0 - 180DEG
 □ Interval: 1.0DEG
 Test System:EVERFINE GO-2000B_V1 SYSTEM V2.00.471
 Humidity:65.0%
 Test Distance:4.880m [K=1.0000]
 Remarks:

LUMINOUS DISTRIBUTION INTENSITY DATA

Table--2

UNIT: cd

C (DEG) \ □ (DEG)	285	300	315	330	345														
0	88.3	87.7	87.8	88.0	86.8														
5	87.3	87.0	87.3	87.8	86.3														
10	85.7	85.9	86.7	87.7	86.0														
15	83.5	84.3	86.0	87.8	86.1														
20	80.8	82.5	85.1	87.8	86.2														
25	77.6	80.3	84.0	87.5	86.0														
30	73.9	77.7	82.4	86.7	85.3														
35	69.7	74.8	80.4	85.5	83.8														
40	65.2	71.1	77.9	83.9	81.6														
45	60.3	67.3	75.2	82.0	78.5														
50	55.1	63.2	72.0	79.8	78.2														
55	49.6	58.7	68.7	77.2	79.2														
60	43.9	54.0	65.2	74.1	80.3														
65	37.8	49.3	61.7	71.2	79.3														
70	31.6	44.5	57.9	68.1	76.7														
75	25.5	39.4	54.8	61.7	72.7														
80	19.6	36.0	51.0	50.0	68.0														
85	14.0	29.4	44.2	45.7	62.6														
90	9.96	28.3	32.4	41.6	51.2														
95	4.10	17.9	28.7	20.8	44.7														
100	0.99	10.7	23.2	33.0	30.7														
105	0.93	1.87	11.3	24.3	23.9														
110	0.97	1.46	2.75	10.1	13.4														
115	1.07	1.43	2.12	3.07	4.00														
120	1.20	1.49	2.12	2.58	3.27														
125	1.33	1.61	2.20	2.59	2.34														
130	1.44	1.72	2.29	2.67	3.27														
135	1.54	1.84	2.38	2.72	3.33														
140	1.63	1.95	2.44	2.77	3.38														
145	1.70	1.98	2.48	2.79	3.35														
150	1.75	2.03	2.51	2.76	3.28														
155	1.79	2.03	2.52	2.76	3.20														
160	1.79	2.03	2.52	2.73	3.02														
165	1.79	2.01	2.48	2.67	2.85														
170	1.75	1.95	2.40	2.58	2.63														
175	1.69	1.82	2.15	2.29	2.32														
180	1.61	1.63	1.86	1.91	1.86														

C Range: 0 - 360DEG
 C Interval: 15.0DEG
 Test Speed: HIGH
 Temperature:25.3°C
 Operators:DAMIN
 Test Date:2023-09-16

□ Range: 0 - 180DEG
 □ Interval: 1.0DEG
 Test System:EVERFINE GO-2000B_V1 SYSTEM V2.00.471
 Humidity:65.0%
 Test Distance:4.880m [K=1.0000]
 Remarks: