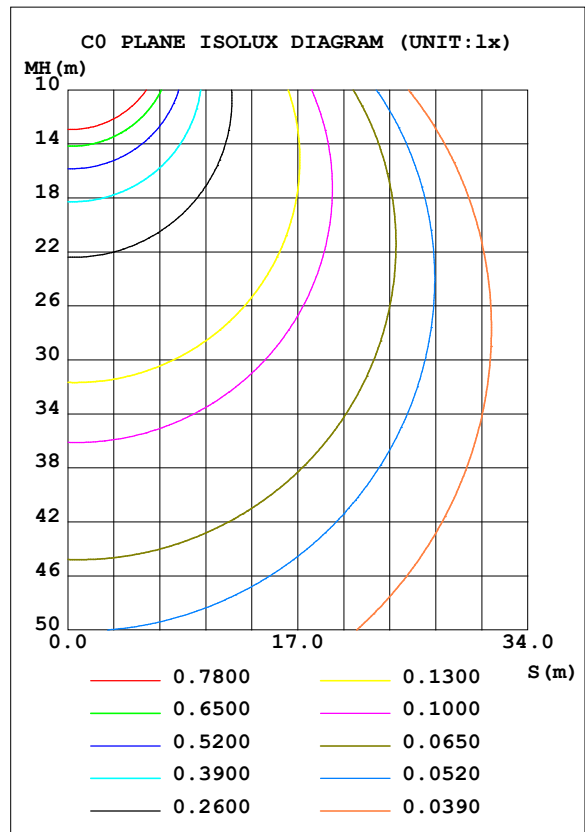
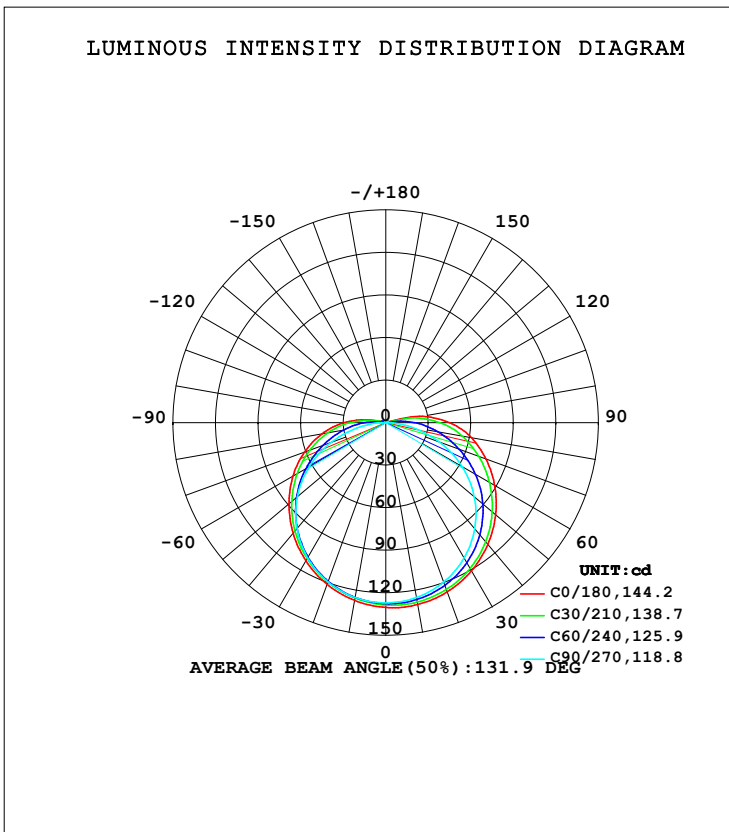


LUMINAIRE PHOTOMETRIC TEST REPORT

NAME: LED Strip	TYPE: Indoor lighting	WEIGHT: 20g
SPEC.: COB LED	DIM.: 500*10*1mm	SERIAL No.: 20210817009
MFR.: EVERFINE	SUR.: 500*10*1mm	Shielding Angle:

DATA OF LAMP		PHOTOMETRIC DATA			
WW-FLS102MBEC768B-24 (WCP) -LD RGB		Eff: 37.41 lm/W			
NOMINAL POWER(W)	13.0791	Imax(cd)	130.7	S/MH(C0/180)	1.29
RATED VOLTAGE(V)	DC 24	LOR(%)	100.0	S/MH(C90/270)	1.29
NOMINAL FLUX(lm)	489.304	TOTAL FLUX(lm)	489.30	<input type="checkbox"/> UP, DN(C0-180)	2.7,47.7
LAMPS INSIDE	1	CIE CLASS	DIRECT	<input type="checkbox"/> UP, DN(C180-360)	2.9,46.7
TEST VOLTAGE(V)	DC 24	<input type="checkbox"/> up(%)	5.6	CIBSE SHR NOM	1.50
		<input type="checkbox"/> down(%)	94.4	CIBSE SHR MAX	1.50



C Range: 0 - 360DEG
 C Interval: 15.0DEG
 Test Speed: HIGH
 Temperature: 25.3DEG
 Operators: DAMIN
 Test Date: 2021-08-17

Range: 0 - 180DEG
 Interval: 1.0DEG
 Test System: EVERFINE GO-2000A_V1 SYSTEM V2.00.444
 Humidity: 65.0%
 Test Distance: 4.880m [K=1.0000]
 Remarks:

ZONAL FLUX DIAGRAM

ZONAL FLUX DIAGRAM:

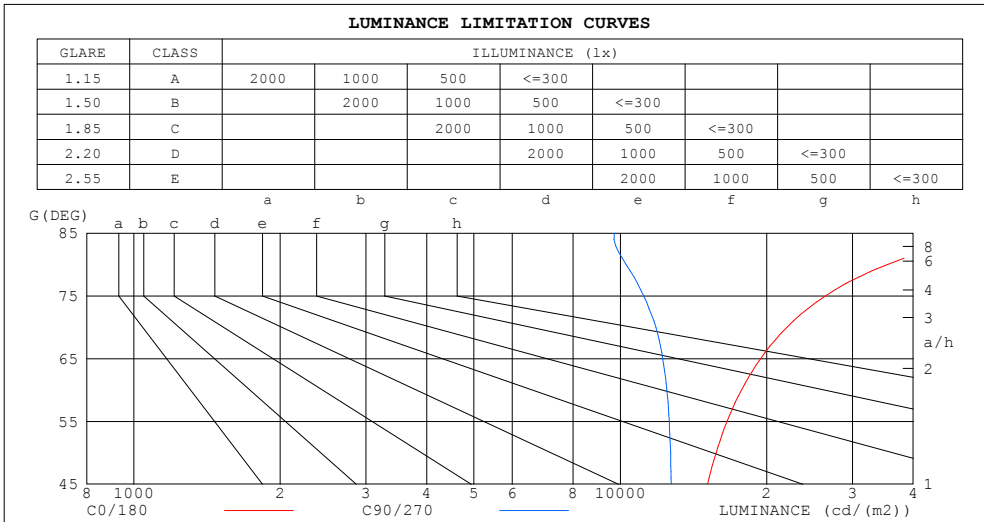
°	C0	C45	C90	C135	C180	C225	C270	C315	°	□ zone	□ total	%lum, lamp
10	130.2	127.5	125.2	124.0	127.3	125.1	125.2	126.4	0- 10	12.13	12.13	2.48,2.48
20	127.0	123.6	119.6	118.1	121.3	119.1	119.5	122.6	10- 20	35.06	47.19	9.64,9.64
30	120.8	116.6	110.4	109.2	112.6	110.0	110.2	115.7	20- 30	54.22	101.4	20.7,20.7
40	112.0	106.8	97.64	97.53	101.7	98.25	97.44	105.9	30- 40	67.57	169.0	34.5,34.5
50	101.1	94.25	81.54	83.57	89.14	84.31	81.45	93.52	40- 50	73.80	242.8	49.6,49.6
60	88.71	79.46	62.33	67.89	75.64	68.81	62.41	79.19	50- 60	72.49	315.3	64.4,64.4
70	75.25	63.35	40.48	51.70	61.05	52.82	41.13	63.81	60- 70	64.10	379.4	77.5,77.5
80	61.40	47.17	17.87	35.21	45.75	36.59	18.92	47.69	70- 80	49.98	429.3	87.7,87.7
90	44.90	30.52	2.123	19.23	29.43	20.72	3.796	22.45	80- 90	32.62	461.9	94.4,94.4
100	26.45	11.20	0.6353	4.019	12.23	5.414	0.7674	13.64	90-100	16.86	478.8	97.9,97.9
110	1.058	0.8514	0.7117	1.108	1.483	2.867	0.7671	3.221	100-110	4.443	483.3	98.8,98.8
120	0.9067	0.8651	0.8502	0.9585	1.097	1.637	0.9214	3.072	110-120	1.492	484.7	99.1,99.1
130	1.001	0.9969	0.9909	1.081	1.147	1.086	1.055	2.832	120-130	1.256	486.0	99.3,99.3
140	1.106	1.119	1.118	1.201	1.228	1.190	1.190	2.574	130-140	1.095	487.1	99.5,99.5
150	1.216	1.236	1.252	1.299	1.314	1.286	1.334	2.410	140-150	0.9173	488.0	99.7,99.7
160	1.337	1.347	1.360	1.397	1.406	1.380	1.456	2.290	150-160	0.6996	488.7	99.9,99.9
170	1.445	1.446	1.462	1.482	1.491	1.458	1.501	2.096	160-170	0.4410	489.2	100,100
180	1.520	1.506	1.538	1.670	1.523	1.501	1.522	1.687	170-180	0.1500	489.3	100,100
DEG	LUMINOUS INTENSITY:cd									UNIT:lm		

C Range: 0 - 360DEG
 C Interval: 15.0DEG
 Test Speed: HIGH
 Temperature:25.3DEG
 Operators:DAMIN
 Test Date:2021-08-17

□ Range: 0 - 180DEG
 □ Interval: 1.0DEG
 Test System:EVERFINE GO-2000A_V1 SYSTEM V2.00.444
 Humidity:65.0%
 Test Distance:4.880m [K=1.0000]
 Remarks:

LUMINANCE LIMITATION CURVES

NAME: LED Strip	TYPE: Indoor lighting	WEIGHT: 20g
SPEC.: COB LED	DIM.: 500*10*1mm	SERIAL No.: 20210817009
MFR.: EVERFINE	SUR.: 500*10*1mm	Shielding Angle:



LUMINANCE cd/(m2)		
G (DEG)	C0/180	C90/270
85	61537	9723
80	35357	10291
75	26401	11177
70	22001	11835
65	19428	12231
60	17743	12466
55	16574	12608
50	15732	12686
45	15103	12728

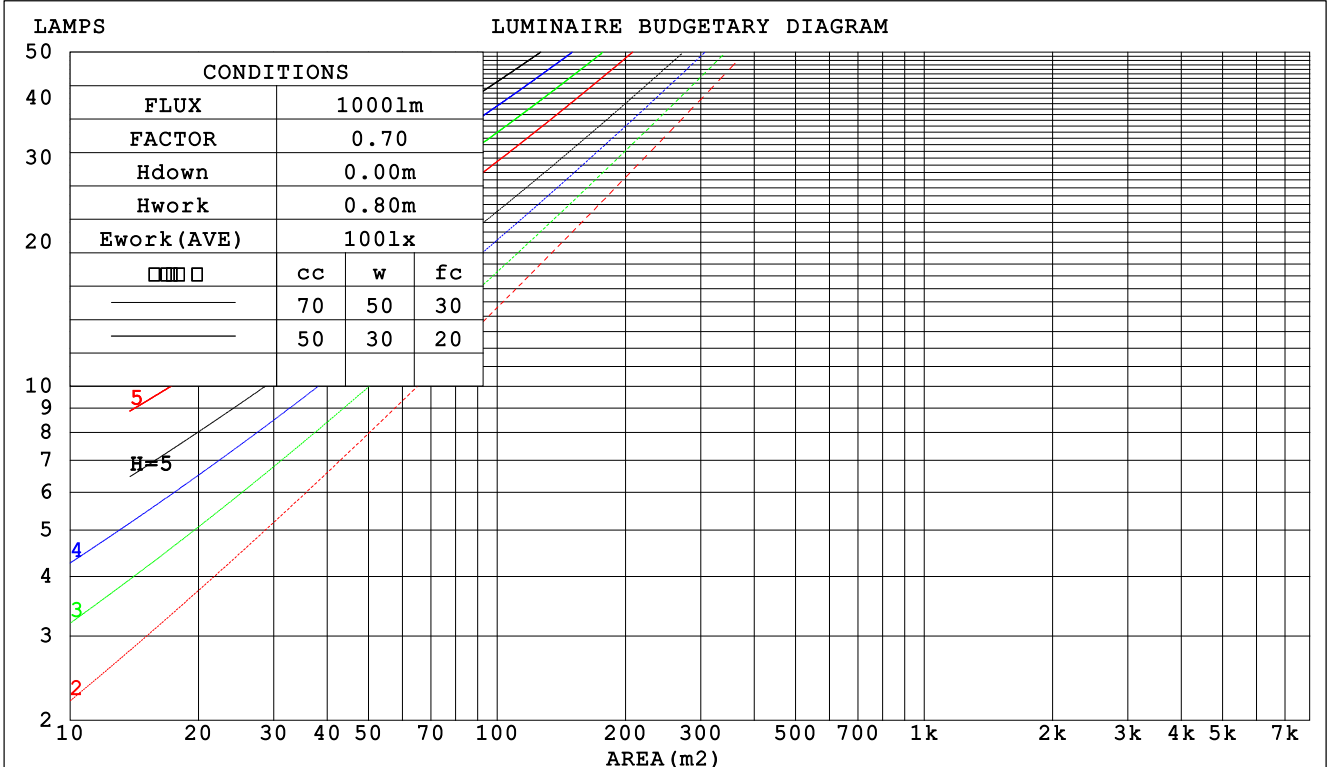
C Range: 0 - 360DEG
 C Interval: 15.0DEG
 Test Speed: HIGH
 Temperature: 25.3DEG
 Operators: DAMIN
 Test Date: 2021-08-17

Range: 0 - 180DEG
 Interval: 1.0DEG
 Test System: EVERFINE GO-2000A_V1 SYSTEM V2.00.444
 Humidity: 65.0%
 Test Distance: 4.880m [K=1.0000]
 Remarks:

CU AND LUMINAIRE BUDGETARY ESTIMATE DIAGRAM

NAME: LED Strip	TYPE: Indoor lighting	WEIGHT: 20g
SPEC.: COB LED	DIM.: 500*10*1mm	SERIAL No.: 20210817009
MFR.: EVERFINE	SUR.: 500*10*1mm	Shielding Angle:

□cc	80%			70%			50%			30%			10%			0
□w	50%	30%	10%	50%	30%	10%	50%	30%	10%	50%	30%	10%	50%	30%	10%	0
□fc	20%			20%			20%			20%			20%			0
RCR	RCR:Room Cavity Ratio															
	Coefficients of Utilization(CU)															
0.0	1.18	1.18	1.18	1.14	1.14	1.14	1.08	1.08	1.08	1.02	1.02	1.02	.97	.97	.97	.94
1.0	.99	.94	.89	.96	.91	.87	.91	.87	.83	.86	.82	.79	.81	.78	.76	.73
2.0	.85	.77	.70	.82	.75	.69	.78	.72	.66	.73	.68	.64	.69	.65	.62	.59
3.0	.73	.64	.57	.71	.63	.56	.67	.60	.54	.64	.58	.53	.61	.55	.51	.48
4.0	.64	.55	.48	.63	.54	.47	.59	.52	.46	.56	.50	.44	.53	.48	.43	.41
5.0	.57	.48	.40	.56	.47	.40	.53	.45	.39	.50	.43	.38	.48	.42	.37	.35
6.0	.51	.42	.35	.50	.41	.35	.48	.40	.34	.45	.38	.33	.43	.37	.32	.30
7.0	.46	.37	.31	.45	.36	.30	.43	.35	.30	.41	.34	.29	.39	.33	.28	.26
8.0	.42	.33	.27	.41	.33	.27	.39	.32	.26	.38	.31	.26	.36	.30	.25	.23
9.0	.39	.30	.24	.38	.30	.24	.36	.29	.24	.35	.28	.23	.33	.27	.23	.21
10.0	.36	.27	.22	.35	.27	.22	.33	.26	.21	.32	.26	.21	.31	.25	.21	.19



C Range: 0 - 360DEG
 C Interval: 15.0DEG
 Test Speed: HIGH
 Temperature: 25.3DEG
 Operators: DAMIN
 Test Date: 2021-08-17

□ Range: 0 - 180DEG
 □ Interval: 1.0DEG
 Test System: EVERFINE GO-2000A_V1 SYSTEM V2.00.444
 Humidity: 65.0%
 Test Distance: 4.880m [K=1.0000]
 Remarks:

WEC AND CCEC

NAME: LED Strip	TYPE: Indoor lighting	WEIGHT: 20g
SPEC.: COB LED	DIM.: 500*10*1mm	SERIAL No.: 20210817009
MFR.: EVERFINE	SUR.: 500*10*1mm	Shielding Angle:

<input type="checkbox"/> cc	80%			70%			50%			30%			10%			0
<input type="checkbox"/> w	50%	30%	10%	50%	30%	10%	50%	30%	10%	50%	30%	10%	50%	30%	10%	0
<input type="checkbox"/> fc	20%			20%			20%			20%			20%			0
RCR	RCR:Room Cavity Ratio						Wall Exitance Coefficients (WEC)									
0.0																
1.0	.381	.217	.069	.372	.212	.067	.355	.204	.065	.340	.196	.063	.326	.189	.061	
2.0	.335	.184	.056	.327	.180	.055	.312	.173	.054	.298	.167	.052	.285	.161	.051	
3.0	.299	.159	.048	.292	.157	.047	.279	.151	.046	.266	.146	.045	.255	.141	.044	
4.0	.270	.141	.041	.264	.138	.041	.252	.134	.040	.241	.129	.039	.230	.125	.038	
5.0	.246	.125	.036	.241	.123	.036	.230	.120	.035	.220	.116	.034	.210	.112	.034	
6.0	.226	.113	.032	.221	.111	.032	.211	.108	.031	.202	.105	.031	.193	.102	.030	
7.0	.208	.103	.029	.204	.102	.029	.195	.099	.028	.187	.096	.028	.179	.093	.027	
8.0	.193	.094	.027	.189	.093	.026	.181	.091	.026	.174	.088	.025	.167	.086	.025	
9.0	.180	.087	.024	.176	.086	.024	.169	.084	.024	.163	.081	.023	.156	.079	.023	
10.0	.169	.081	.022	.165	.080	.022	.159	.078	.022	.153	.076	.022	.147	.074	.021	

<input type="checkbox"/> cc	80%			70%			50%			30%			10%			0
<input type="checkbox"/> w	50%	30%	10%	50%	30%	10%	50%	30%	10%	50%	30%	10%	50%	30%	10%	0
<input type="checkbox"/> fc	20%			20%			20%			20%			20%			0
RCR	RCR:Room Cavity Ratio						Ceiling Cavity Exitance Coefficients (CCEC)									
0.0	.233	.233	.233	.199	.199	.199	.136	.136	.136	.078	.078	.078	.025	.025	.025	
1.0	.228	.198	.172	.195	.170	.148	.134	.117	.102	.077	.068	.059	.025	.022	.019	
2.0	.221	.175	.136	.189	.151	.118	.130	.104	.082	.075	.061	.048	.024	.020	.016	
3.0	.214	.158	.114	.183	.136	.098	.126	.095	.069	.073	.055	.041	.023	.018	.013	
4.0	.206	.145	.099	.177	.125	.086	.121	.087	.060	.070	.051	.036	.023	.017	.012	
5.0	.198	.135	.089	.170	.117	.077	.117	.082	.054	.068	.048	.032	.022	.016	.011	
6.0	.190	.127	.081	.164	.110	.071	.113	.077	.050	.065	.045	.030	.021	.015	.010	
7.0	.183	.120	.076	.158	.104	.066	.109	.073	.047	.063	.043	.028	.020	.014	.009	
8.0	.176	.114	.072	.152	.099	.063	.105	.070	.044	.061	.041	.026	.020	.013	.009	
9.0	.170	.109	.069	.146	.095	.060	.101	.067	.043	.059	.039	.025	.019	.013	.008	
10.0	.164	.105	.066	.141	.091	.058	.098	.064	.041	.057	.038	.024	.019	.012	.008	

C Range: 0 - 360DEG
 C Interval: 15.0DEG
 Test Speed: HIGH
 Temperature: 25.3DEG
 Operators: DAMIN
 Test Date: 2021-08-17

Range: 0 - 180DEG
 Interval: 1.0DEG
 Test System: EVERFINE GO-2000A_V1 SYSTEM V2.00.444
 Humidity: 65.0%
 Test Distance: 4.880m [K=1.0000]
 Remarks:

UGR(Unified Glare Rating) Table

NAME: LED Strip	TYPE: Indoor lighting	WEIGHT: 20g
SPEC.: COB LED	DIM.: 500*10*1mm	SERIAL No.: 20210817009
MFR.: EVERFINE	SUR.: 500*10*1mm	Shielding Angle:

ceiling/cavity	0.7	0.7	0.5	0.5	0.3	0.7	0.7	0.5	0.5	0.3
walls	0.5	0.3	0.5	0.3	0.3	0.5	0.3	0.5	0.3	0.3
working plane	0.2	0.2	0.2	0.2	0.2	0.2	0.2	0.2	0.2	0.2
Room dimensions	Viewed crosswise					Viewed endwise				
x = 2H y = 2H	25.4	26.9	25.7	27.2	27.5	23.9	25.4	24.2	25.8	26.1
3H	27.9	29.4	28.3	29.7	30.1	25.6	27.0	26.0	27.4	27.7
4H	29.3	30.7	29.7	31.0	31.4	26.3	27.6	26.7	28.0	28.4
6H	30.8	32.1	31.2	32.5	32.9	26.8	28.1	27.2	28.5	28.9
8H	31.6	32.9	32.1	33.3	33.7	27.0	28.2	27.4	28.6	29.1
12H	32.5	33.8	33.0	34.2	34.6	27.1	28.3	27.5	28.7	29.2
4H 2H	26.0	27.4	26.4	27.7	28.1	24.9	26.3	25.4	26.7	27.1
3H	28.8	30.0	29.2	30.4	30.8	26.9	28.1	27.3	28.5	28.9
4H	30.4	31.5	30.8	31.9	32.4	27.8	28.9	28.2	29.3	29.8
6H	32.1	33.1	32.6	33.6	34.1	28.5	29.5	29.0	30.0	30.4
8H	33.1	34.0	33.6	34.5	35.0	28.8	29.7	29.3	30.2	30.7
12H	34.1	35.0	34.6	35.5	36.0	29.0	29.8	29.5	30.3	30.9
8H 4H	30.8	31.7	31.3	32.2	32.7	28.7	29.6	29.2	30.1	30.6
6H	32.8	33.6	33.3	34.1	34.7	29.8	30.5	30.3	31.1	31.6
8H	34.0	34.7	34.5	35.2	35.8	30.2	30.9	30.8	31.5	32.0
12H	35.3	35.9	35.9	36.5	37.1	30.6	31.2	31.2	31.8	32.4
12H 4H	30.8	31.7	31.3	32.2	32.7	28.9	29.8	29.5	30.3	30.8
6H	32.9	33.7	33.5	34.2	34.8	30.2	30.9	30.8	31.5	32.0
8H	34.2	34.8	34.8	35.4	36.0	30.8	31.5	31.4	32.0	32.6
Variations with the observer position at spacings(CIE Pub.117):										
S = 1.0H	+ 0.1 / - 0.1					+ 0.1 / - 0.1				
1.5H	+ 0.2 / - 0.3					+ 0.2 / - 0.3				
2.0H	+ 0.2 / - 0.4					+ 0.2 / - 0.4				

CIE Pub.117, 489.3 lm Total Lamp Luminous Flux Correct (8log(F/F0) = -2.5)
 Area: 0.01 m2

C Range: 0 - 360DEG
 C Interval: 15.0DEG
 Test Speed: HIGH
 Temperature:25.3DEG
 Operators:DAMIN
 Test Date:2021-08-17

Range: 0 - 180DEG
 Interval: 1.0DEG
 Test System:EVERFINE GO-2000A_V1 SYSTEM V2.00.444
 Humidity:65.0%
 Test Distance:4.880m [K=1.0000]
 Remarks:

UTILIZATION FACTORS TABLE

NAME: LED Strip	TYPE: Indoor lighting	WEIGHT: 20g
SPEC.: COB LED	DIM.: 500*10*1mm	SERIAL No.: 20210817009
MFR.: EVERFINE	SUR.: 500*10*1mm	Shielding Angle:

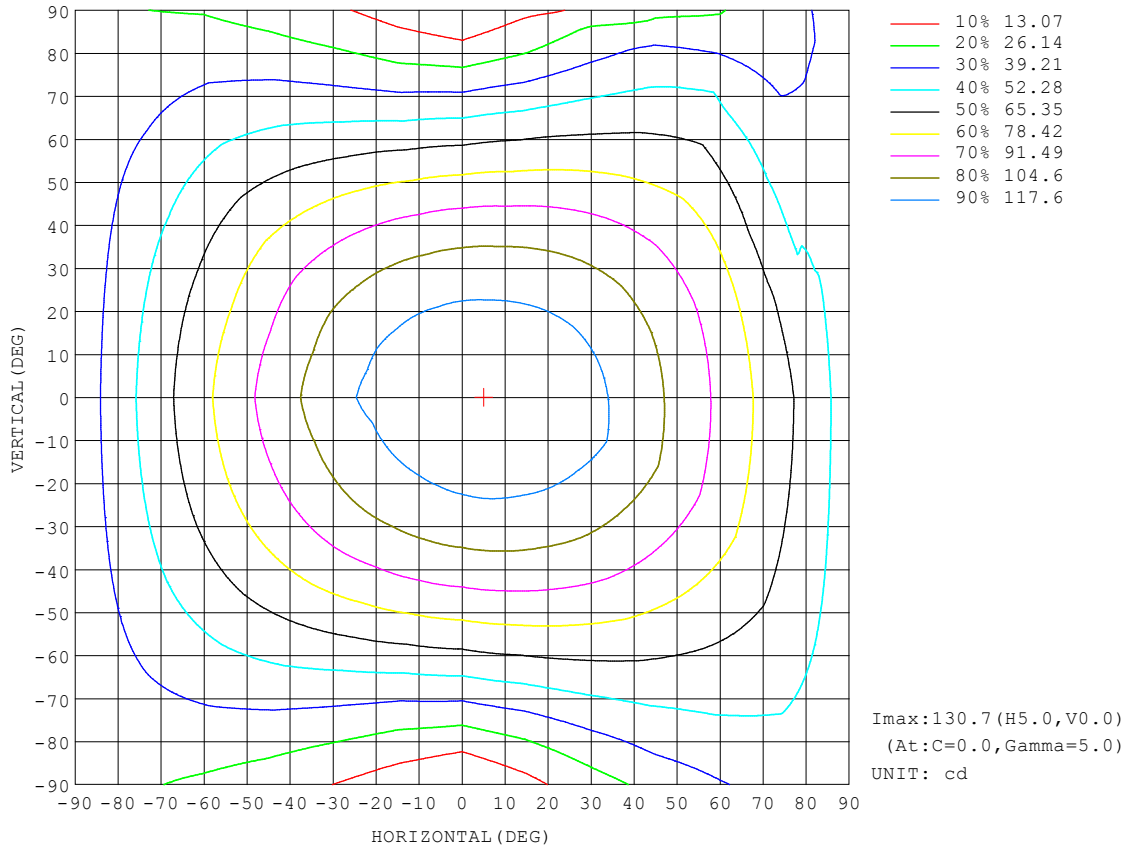
REFLECTANCE										
Ceiling	0.8	0.8	0.8	0.7	0.7	0.7	0.5	0.5	0.5	0
Walls	0.7	0.5	0.3	0.7	0.5	0.3	0.7	0.5	0.3	0
Working plane	0.2	0.2	0.2	0.2	0.2	0.2	0.2	0.2	0.2	0
ROOM INDEX	UTILIZATION FACTORS (PERCENT) $k(RI) \times RCR = 5$									
k = 0.60	52	39	32	51	39	32	49	38	32	25
0.80	61	48	40	60	48	40	58	47	40	32
1.00	69	57	48	68	56	48	65	57	47	39
1.25	76	64	56	74	63	55	71	61	54	46
1.50	81	70	61	79	68	61	76	66	59	51
2.00	88	78	70	86	77	69	82	74	67	58
2.50	93	83	76	90	82	75	86	78	72	62
3.00	96	88	81	94	86	80	89	82	77	67
4.00	101	94	88	98	91	86	93	87	83	72
5.00	104	97	92	101	95	90	95	91	87	75
ROOM INDEX	UF(total)									Direct
According to DIN EN 13032-2 2004			Suspended				SHRNOM = 1.25			

C Range: 0 - 360DEG
 C Interval: 15.0DEG
 Test Speed: HIGH
 Temperature: 25.3DEG
 Operators: DAMIN
 Test Date: 2021-08-17

Range: 0 - 180DEG
 Interval: 1.0DEG
 Test System: EVERFINE GO-2000A_V1 SYSTEM V2.00.444
 Humidity: 65.0%
 Test Distance: 4.880m [K=1.0000]
 Remarks:

ISOCANDELA DIAGRAM

NAME: LED Strip	TYPE: Indoor lighting	WEIGHT: 20g
SPEC.: COB LED	DIM.: 500*10*1mm	SERIAL No.: 20210817009
MFR.: EVERFINE	SUR.: 500*10*1mm	Shielding Angle:

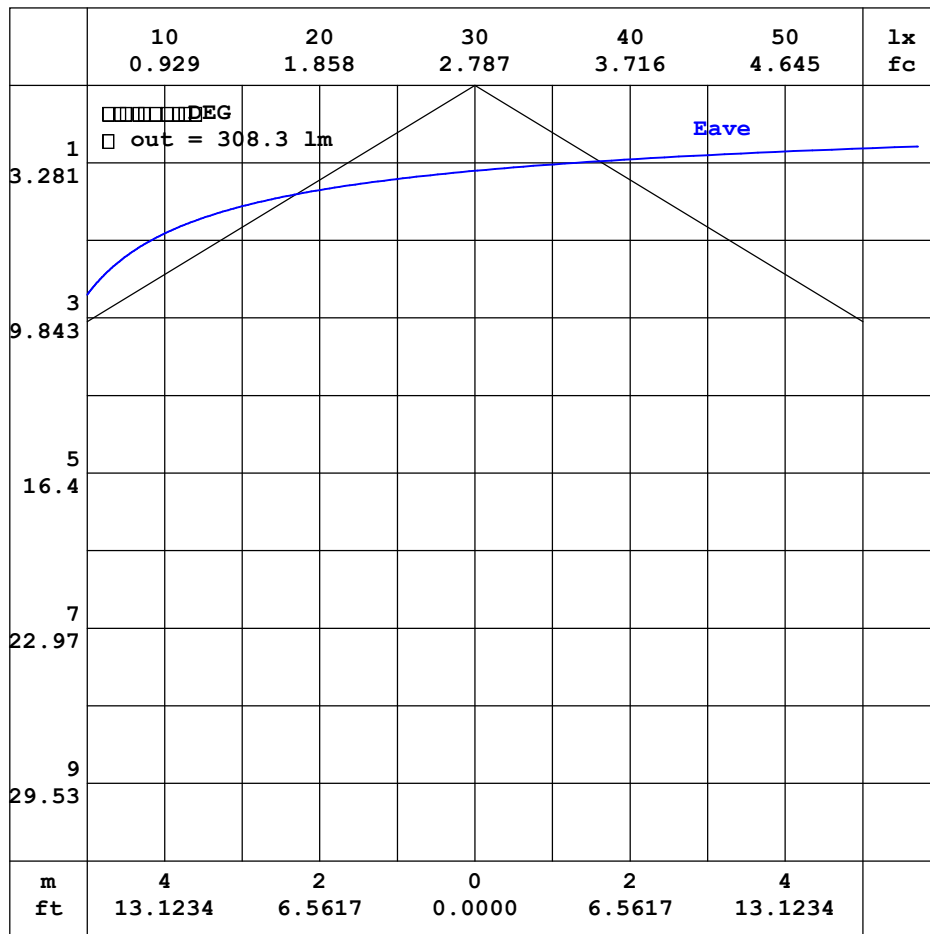


C Range: 0 - 360DEG
 C Interval: 15.0DEG
 Test Speed: HIGH
 Temperature: 25.3DEG
 Operators: DAMIN
 Test Date: 2021-08-17

Range: 0 - 180DEG
 Interval: 1.0DEG
 Test System: EVERFINE GO-2000A_V1 SYSTEM V2.00.444
 Humidity: 65.0%
 Test Distance: 4.880m [K=1.0000]
 Remarks:

AAI CURVES

NAME: LED Strip	TYPE: Indoor lighting	WEIGHT: 20g
SPEC.: COB LED	DIM.: 500*10*1mm	SERIAL No.: 20210817009
MFR.: EVERFINE	SUR.: 500*10*1mm	Shielding Angle:



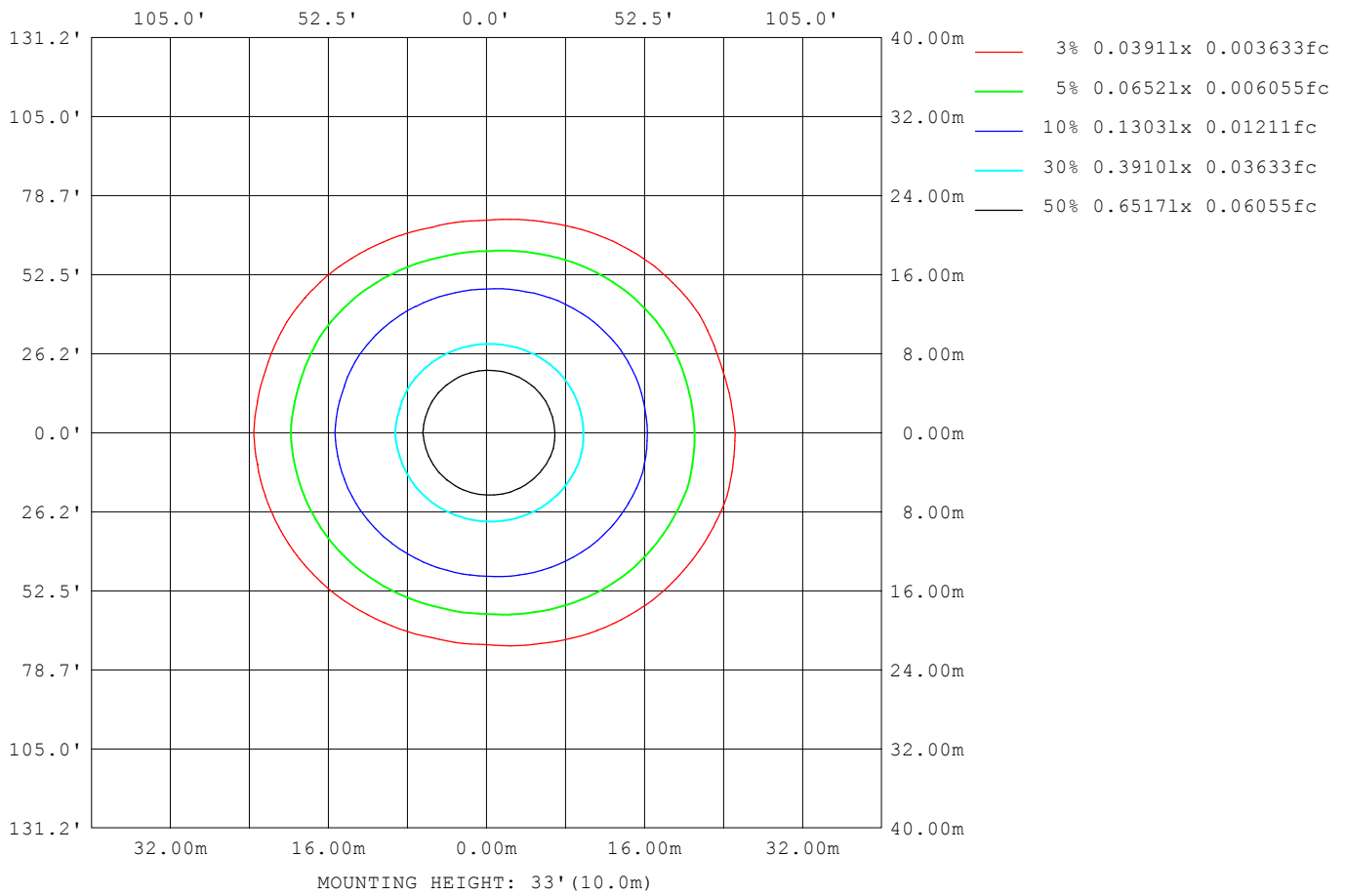
Note: The Curves indicate the illuminated area and the average illumination when the luminaire is at different distance.

C Range: 0 - 360DEG
 C Interval: 15.0DEG
 Test Speed: HIGH
 Temperature: 25.3DEG
 Operators: DAMIN
 Test Date: 2021-08-17

Range: 0 - 180DEG
 Interval: 1.0DEG
 Test System: EVERFINE GO-2000A_V1 SYSTEM V2.00.444
 Humidity: 65.0%
 Test Distance: 4.880m [K=1.0000]
 Remarks:

ISOLUX DIAGRAM

NAME: LED Strip	TYPE: Indoor lighting	WEIGHT: 20g
SPEC.: COB LED	DIM.: 500*10*1mm	SERIAL No.: 20210817009
MFR.: EVERFINE	SUR.: 500*10*1mm	Shielding Angle:



C Range: 0 - 360DEG
 C Interval: 15.0DEG
 Test Speed: HIGH
 Temperature: 25.3DEG
 Operators: DAMIN
 Test Date: 2021-08-17

Range: 0 - 180DEG
 Interval: 1.0DEG
 Test System: EVERFINE GO-2000A_V1 SYSTEM V2.00.444
 Humidity: 65.0%
 Test Distance: 4.880m [K=1.0000]
 Remarks:

LED Avg.L Report

NAME: LED Strip	TYPE: Indoor lighting	WEIGHT: 20g
SPEC.: COB LED	DIM.: 500*10*1mm	SERIAL No.: 20210817009
MFR.: EVERFINE	SUR.: 500*10*1mm	Shielding Angle:

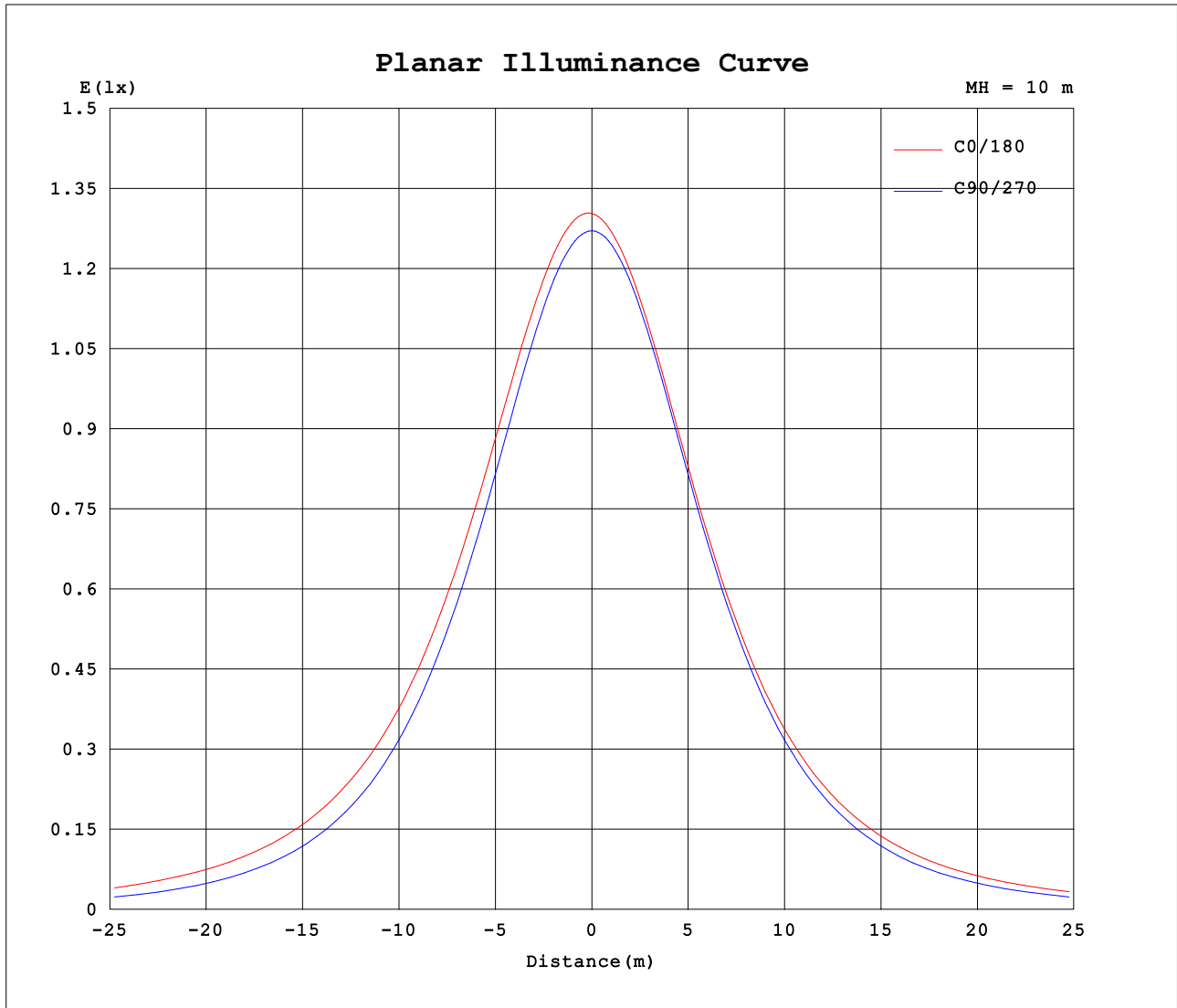
AvgL	cd/m2
L_0~180 (65) av	17834
L_0~180 (75) av	23540
L_0~180 (85) av	52442
L_90~270 (65) av	12270
L_90~270 (75) av	11365
L_90~270 (85) av	10463
L_45 (65) av	15607
L_45 (75) av	19253
L_45 (85) av	37942

Standard: GB/T 29293-2012

C Range: 0 - 360DEG
 C Interval: 15.0DEG
 Test Speed: HIGH
 Temperature:25.3DEG
 Operators:DAMIN
 Test Date:2021-08-17

Range: 0 - 180DEG
 Interval: 1.0DEG
 Test System:EVERFINE GO-2000A_V1 SYSTEM V2.00.444
 Humidity:65.0%
 Test Distance:4.880m [K=1.0000]
 Remarks:

Planar Illuminance Curve



C Range: 0 - 360DEG
 C Interval: 15.0DEG
 Test Speed: HIGH
 Temperature: 25.3DEG
 Operators: DAMIN
 Test Date: 2021-08-17

Range: 0 - 180DEG
 Interval: 1.0DEG
 Test System: EVERFINE GO-2000A_V1 SYSTEM V2.00.444
 Humidity: 65.0%
 Test Distance: 4.880m [K=1.0000]
 Remarks:

LUMINOUS DISTRIBUTION INTENSITY DATA

NAME: LED Strip	TYPE: Indoor lighting	WEIGHT: 20g
SPEC.: COB LED	DIM.: 500*10*1mm	SERIAL No.: 20210817009
MFR.: EVERFINE	SUR.: 500*10*1mm	Shielding Angle:

Table--1

UNIT: cd

C (DEG) □ (DEG)	0	15	30	45	60	75	90	105	120	135	150	165	180	195	210	225	240	255	270
0	130	130	129	128	128	127	127	127	127	127	127	128	130	130	129	128	128	127	127
5	131	130	129	128	128	127	127	126	126	126	126	127	129	128	127	127	127	127	127
10	130	130	128	127	127	126	125	125	124	124	124	125	127	126	126	125	125	125	125
15	129	129	127	126	125	124	123	122	121	121	122	122	125	123	123	122	123	122	123
20	127	127	125	124	122	121	120	119	118	118	118	119	121	120	120	119	119	119	120
25	124	125	122	120	119	117	115	114	114	114	114	115	117	116	116	115	115	115	115
30	121	122	119	117	114	112	110	109	109	109	110	110	113	111	111	110	110	109	110
35	117	118	115	112	109	107	104	103	103	104	104	105	107	106	106	104	104	103	104
40	112	113	110	107	103	100	97.6	96.6	96.4	97.5	98.4	99.6	102	99.9	99.7	98.2	97.2	96.6	97.4
45	107	108	104	101	96.6	93.0	90.0	89.1	89.2	90.8	92.1	93.5	95.6	93.6	93.4	91.5	90.0	89.0	89.8
50	101	102	98.0	94.2	89.4	85.0	81.5	80.8	81.4	83.6	85.3	87.1	89.1	87.0	86.5	84.3	82.2	80.8	81.5
55	95.1	95.7	91.4	87.1	81.6	76.3	72.3	71.8	73.1	75.9	78.2	80.5	82.5	80.2	79.5	76.7	73.9	71.8	72.4
60	88.7	89.2	84.4	79.5	73.1	66.9	62.3	62.0	64.3	67.9	71.0	73.6	75.6	73.2	72.3	68.8	65.0	62.3	62.4
65	82.1	82.5	77.2	71.6	64.3	56.8	51.7	51.9	55.3	59.8	63.7	66.3	68.6	66.0	64.7	60.9	56.0	52.3	52.0
70	75.2	75.4	69.8	63.3	55.2	46.4	40.5	41.6	46.3	51.7	56.0	59.0	61.1	58.5	57.1	52.8	47.1	42.1	41.1
75	68.3	68.3	62.3	55.2	46.1	36.0	28.9	31.4	37.5	43.5	48.2	51.5	53.5	50.8	49.3	44.8	38.5	32.0	29.9
80	61.4	61.1	54.9	47.2	37.2	26.0	17.9	21.9	28.7	35.2	40.2	43.7	45.7	42.8	41.4	36.6	30.1	22.7	18.9
85	53.6	53.3	47.1	39.2	28.6	17.0	8.47	13.6	20.4	27.1	32.1	35.8	37.8	34.6	33.4	28.5	22.1	14.8	9.76
90	44.9	44.5	38.3	30.5	20.3	9.62	2.12	6.77	13.0	19.2	23.9	27.5	29.4	26.3	25.3	20.7	14.9	8.37	3.80
95	35.8	35.3	29.2	21.9	12.4	2.33	0.66	1.84	6.05	11.5	15.8	19.0	20.8	18.0	17.1	13.2	8.23	3.76	0.98
100	26.4	25.9	19.8	11.2	1.33	0.89	0.64	0.98	1.58	4.02	7.54	10.6	12.2	9.72	8.89	5.41	3.60	3.26	0.77
105	10.9	9.78	3.40	1.00	0.86	0.79	0.64	0.80	1.06	1.40	2.02	3.12	3.91	2.29	2.84	3.20	3.24	1.82	0.73
110	1.06	1.52	0.91	0.85	0.82	0.73	0.71	0.74	0.87	1.11	1.32	1.50	1.48	1.01	2.22	2.87	2.75	0.97	0.77
115	0.92	1.25	0.88	0.83	0.79	0.78	0.78	0.80	0.82	1.02	1.20	1.32	1.19	1.01	1.99	2.37	1.61	0.83	0.83
120	0.91	1.09	0.88	0.87	0.84	0.85	0.85	0.87	0.89	0.96	1.14	1.24	1.10	1.05	1.80	1.64	0.98	0.90	0.92
125	0.94	1.05	0.93	0.93	0.91	0.92	0.92	0.94	0.96	1.01	1.07	1.17	1.11	1.09	1.62	1.15	1.00	0.97	1.00
130	1.00	1.02	0.99	1.00	0.98	0.99	0.99	1.01	1.03	1.08	1.09	1.11	1.15	1.15	1.45	1.09	1.07	1.03	1.06
135	1.06	1.06	1.05	1.06	1.04	1.06	1.05	1.08	1.10	1.15	1.15	1.16	1.18	1.19	1.23	1.14	1.13	1.10	1.11
140	1.11	1.12	1.11	1.12	1.10	1.12	1.12	1.14	1.16	1.20	1.21	1.22	1.23	1.23	1.24	1.19	1.18	1.16	1.19
145	1.16	1.18	1.17	1.18	1.16	1.18	1.18	1.20	1.21	1.25	1.26	1.28	1.27	1.27	1.27	1.24	1.24	1.21	1.26
150	1.22	1.24	1.23	1.24	1.23	1.25	1.25	1.27	1.27	1.30	1.31	1.34	1.31	1.31	1.31	1.29	1.29	1.27	1.33
155	1.28	1.29	1.28	1.29	1.29	1.31	1.31	1.33	1.32	1.35	1.35	1.39	1.36	1.35	1.36	1.34	1.34	1.32	1.41
160	1.34	1.35	1.34	1.35	1.34	1.36	1.36	1.38	1.38	1.40	1.40	1.44	1.41	1.39	1.40	1.38	1.39	1.37	1.46
165	1.40	1.40	1.39	1.40	1.39	1.41	1.41	1.43	1.42	1.44	1.44	1.49	1.45	1.43	1.45	1.42	1.43	1.42	1.48
170	1.44	1.45	1.43	1.45	1.44	1.46	1.46	1.48	1.46	1.48	1.48	1.52	1.49	1.47	1.48	1.46	1.47	1.46	1.50
175	1.49	1.49	1.48	1.49	1.48	1.50	1.50	1.54	1.53	1.52	1.52	1.57	1.52	1.50	1.51	1.49	1.50	1.49	1.52
180	1.52	1.52	1.51	1.51	1.51	1.51	1.54	1.59	1.66	1.67	1.60	1.64	1.52	1.51	1.51	1.50	1.50	1.51	1.52

C Range: 0 - 360DEG
 C Interval: 15.0DEG
 Test Speed: HIGH
 Temperature:25.3DEG
 Operators:DAMIN
 Test Date:2021-08-17

□ Range: 0 - 180DEG
 □ Interval: 1.0DEG
 Test System:EVERFINE GO-2000A_V1 SYSTEM V2.00.444
 Humidity:65.0%
 Test Distance:4.880m [K=1.0000]
 Remarks:

LUMINOUS DISTRIBUTION INTENSITY DATA

NAME: LED Strip	TYPE: Indoor lighting	WEIGHT: 20g
SPEC.: COB LED	DIM.: 500*10*1mm	SERIAL No.: 20210817009
MFR.: EVERFINE	SUR.: 500*10*1mm	Shielding Angle:

Table--2

UNIT: cd

C (DEG) \ □ (DEG)	285	300	315	330	345														
0	127	127	127	127	128														
5	126	127	127	128	129														
10	125	126	126	127	128														
15	123	124	125	126	127														
20	120	121	123	124	125														
25	116	118	120	121	123														
30	111	113	116	118	119														
35	106	108	111	114	116														
40	99.3	103	106	109	111														
45	92.1	96.0	100	104	106														
50	84.2	88.9	93.5	97.7	100														
55	75.7	81.2	86.5	91.3	94.0														
60	66.6	73.0	79.2	84.5	87.6														
65	56.8	64.2	71.6	77.5	79.6														
70	46.8	55.4	63.8	70.2	70.9														
75	36.7	46.8	55.8	62.5	57.8														
80	26.7	38.0	47.7	52.6	40.6														
85	18.1	29.7	37.5	39.0	38.2														
90	8.15	16.5	22.4	25.3	35.0														
95	4.85	13.6	21.2	28.0	32.5														
100	3.34	4.06	13.6	21.9	26.0														
105	3.05	3.21	3.35	6.56	11.1														
110	2.58	3.11	3.22	3.11	3.02														
115	2.48	2.92	3.16	3.07	2.94														
120	2.41	2.77	3.07	3.03	2.93														
125	2.40	2.62	2.95	2.98	2.90														
130	2.23	2.53	2.83	2.89	2.84														
135	2.14	2.44	2.70	2.77	2.75														
140	2.10	2.35	2.57	2.65	2.65														
145	2.05	2.24	2.48	2.53	2.55														
150	2.02	2.15	2.41	2.44	2.46														
155	1.97	2.08	2.34	2.32	2.32														
160	1.94	2.01	2.29	2.23	2.22														
165	1.90	1.95	2.22	2.15	2.11														
170	1.82	1.87	2.10	2.04	1.97														
175	1.73	1.78	1.91	1.87	1.80														
180	1.64	1.65	1.69	1.61	1.65														

C Range: 0 - 360DEG
 C Interval: 15.0DEG
 Test Speed: HIGH
 Temperature:25.3DEG
 Operators:DAMIN
 Test Date:2021-08-17

□ Range: 0 - 180DEG
 □ Interval: 1.0DEG
 Test System:EVERFINE GO-2000A_V1 SYSTEM V2.00.444
 Humidity:65.0%
 Test Distance:4.880m [K=1.0000]
 Remarks: