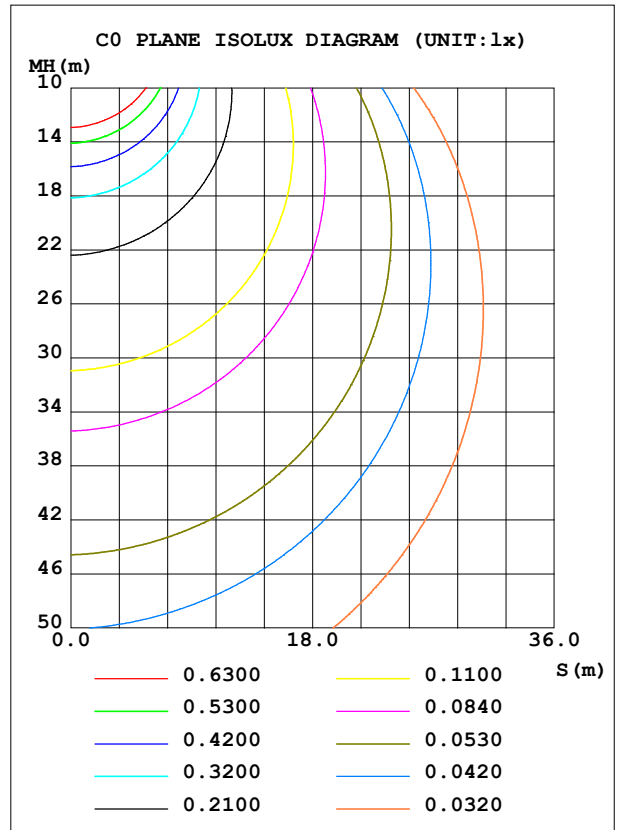
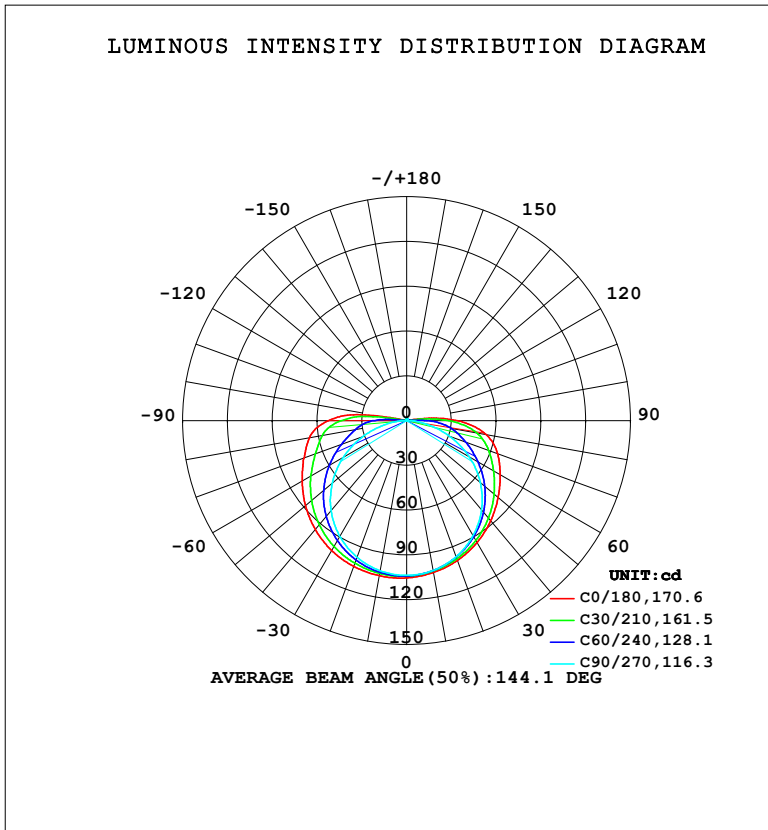


LUMINAIRE PHOTOMETRIC TEST REPORT

NAME: LED Strip	TYPE: Indoor lighting	WEIGHT: 20g
SPEC.: COB LED	DIM.: 500*10*1.9MM	SERIAL No.: 20230302003
MFR.: EVERFINE	SUR.: 500*10*1.9MM	Shielding Angle:

DATA OF LAMP		PHOTOMETRIC DATA			
WW-FLS100022WW336B-48 (WCP) -UR-TR-EP		Imax (cd)	105.7	S/MH (C0/180)	1.43
NOMINAL POWER (W)	4.61588	LOR (%)	100.0	S/MH (C90/270)	1.28
RATED VOLTAGE (V)	DC 48V	TOTAL FLUX (lm)	427.89	<input type="checkbox"/> UP, DN (C0-180)	2.4, 47.3
NOMINAL FLUX (lm)	427.888	CIE CLASS	DIRECT	<input type="checkbox"/> UP, DN (C180-360)	2.6, 47.6
LAMPS INSIDE	1	<input type="checkbox"/> up (%)	5.0	CIBSE SHR NOM	1.50
TEST VOLTAGE (V)	DC 48V	<input type="checkbox"/> down (%)	95.0	CIBSE SHR MAX	1.55



C Range: 0 - 360DEG
 C Interval: 15.0DEG
 Test Speed: HIGH
 Temperature: 25.3°C
 Operators: DAMIN
 Test Date: 2023-03-03

Range: 0 - 180DEG
 Interval: 0.5DEG
 Test System: EVERFINE GO-2000B_V1 SYSTEM V2.00.471
 Humidity: 65.0%
 Test Distance: 4.880m [K=1.0000]
 Remarks:

ZONAL FLUX DIAGRAM

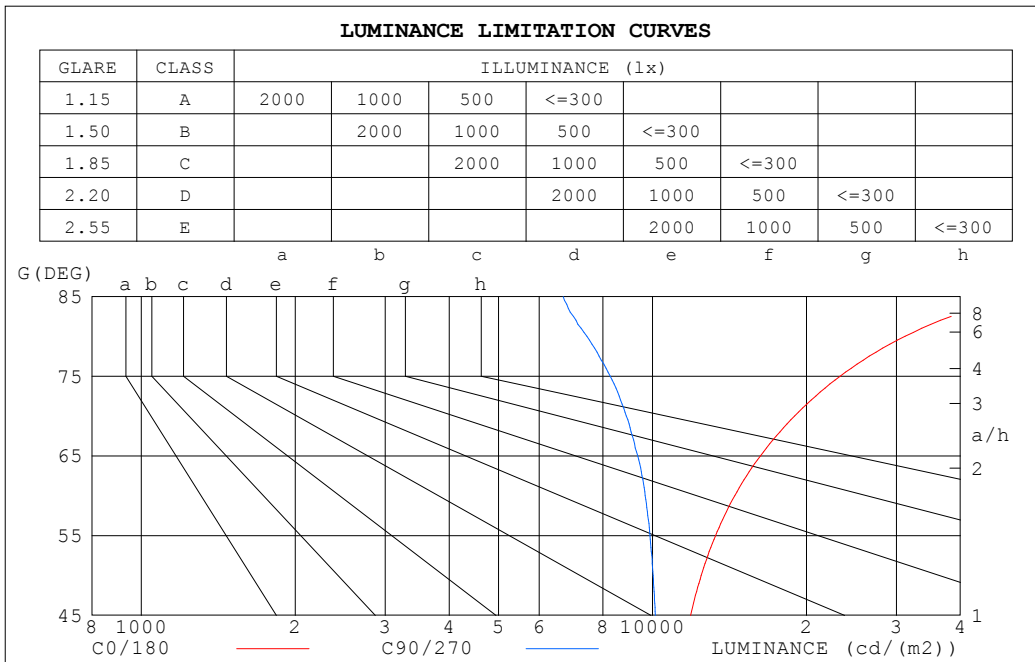
ZONAL FLUX DIAGRAM:

☐	C0	C45	C90	C135	C180	C225	C270	C315	☐	☐ zone	☐ total	%lum,lamp
10	103.3	102.2	102.0	103.5	105.5	103.5	102.2	102.2	0- 10	9.900	9.900	2.31,2.31
20	99.65	97.83	97.07	100.5	103.9	100.4	97.43	98.02	10- 20	28.70	38.60	9.02,9.02
30	94.35	91.31	89.06	95.28	100.5	95.05	89.58	91.68	20- 30	44.62	83.21	19.4,19.4
40	87.63	82.72	78.13	87.94	95.24	87.57	78.82	83.34	30- 40	56.10	139.3	32.6,32.6
50	80.05	72.39	64.44	78.75	88.51	78.20	65.02	73.47	40- 50	62.09	201.4	47.1,47.1
60	72.40	61.47	48.38	68.06	80.85	67.52	48.95	62.85	50- 60	62.35	263.8	61.6,61.6
70	64.86	51.15	30.40	57.74	73.20	56.74	31.05	52.85	60- 70	57.66	321.4	75.1,75.1
80	54.17	40.34	12.92	49.11	66.13	47.76	13.48	40.56	70- 80	48.98	370.4	86.6,86.6
90	33.86	22.17	1.149	35.45	52.44	34.12	0.6831	21.82	80- 90	35.99	406.4	95,95
100	5.125	1.087	0.4801	3.395	16.87	1.832	0.4915	1.460	90-100	16.20	422.6	98.8,98.8
110	0.8984	0.7409	0.5832	0.7203	0.8074	0.6630	0.6080	0.7716	100-110	1.399	424.0	99.1,99.1
120	0.9116	0.8358	0.7008	0.7562	0.8359	0.7474	0.7390	0.8687	110-120	0.7456	424.7	99.3,99.3
130	0.9949	0.9449	0.8294	0.8726	0.9314	0.8650	0.8628	0.9705	120-130	0.7695	425.5	99.4,99.4
140	1.056	1.032	0.9422	0.9853	1.005	0.9619	0.9719	1.049	130-140	0.7424	426.2	99.6,99.6
150	1.127	1.115	1.051	1.077	1.081	1.056	1.078	1.127	140-150	0.6587	426.9	99.8,99.8
160	1.202	1.190	1.157	1.172	1.164	1.145	1.173	1.204	150-160	0.5256	427.4	99.9,99.9
170	1.262	1.259	1.242	1.263	1.249	1.228	1.255	1.265	160-170	0.3447	427.8	100,100
180	1.306	1.290	1.294	1.309	1.301	1.289	1.304	1.306	170-180	0.1219	427.9	100,100
DEG	LUMINOUS INTENSITY:cd									UNIT:lm		

C Range: 0 - 360DEG
 C Interval: 15.0DEG
 Test Speed: HIGH
 Temperature:25.3°C
 Operators:DAMIN
 Test Date:2023-03-03

☐ Range: 0 - 180DEG
 ☐ Interval: 0.5DEG
 Test System:EVERFINE GO-2000B_V1 SYSTEM V2.00.471
 Humidity:65.0%
 Test Distance:4.880m [K=1.0000]
 Remarks:

LUMINANCE LIMITATION CURVES



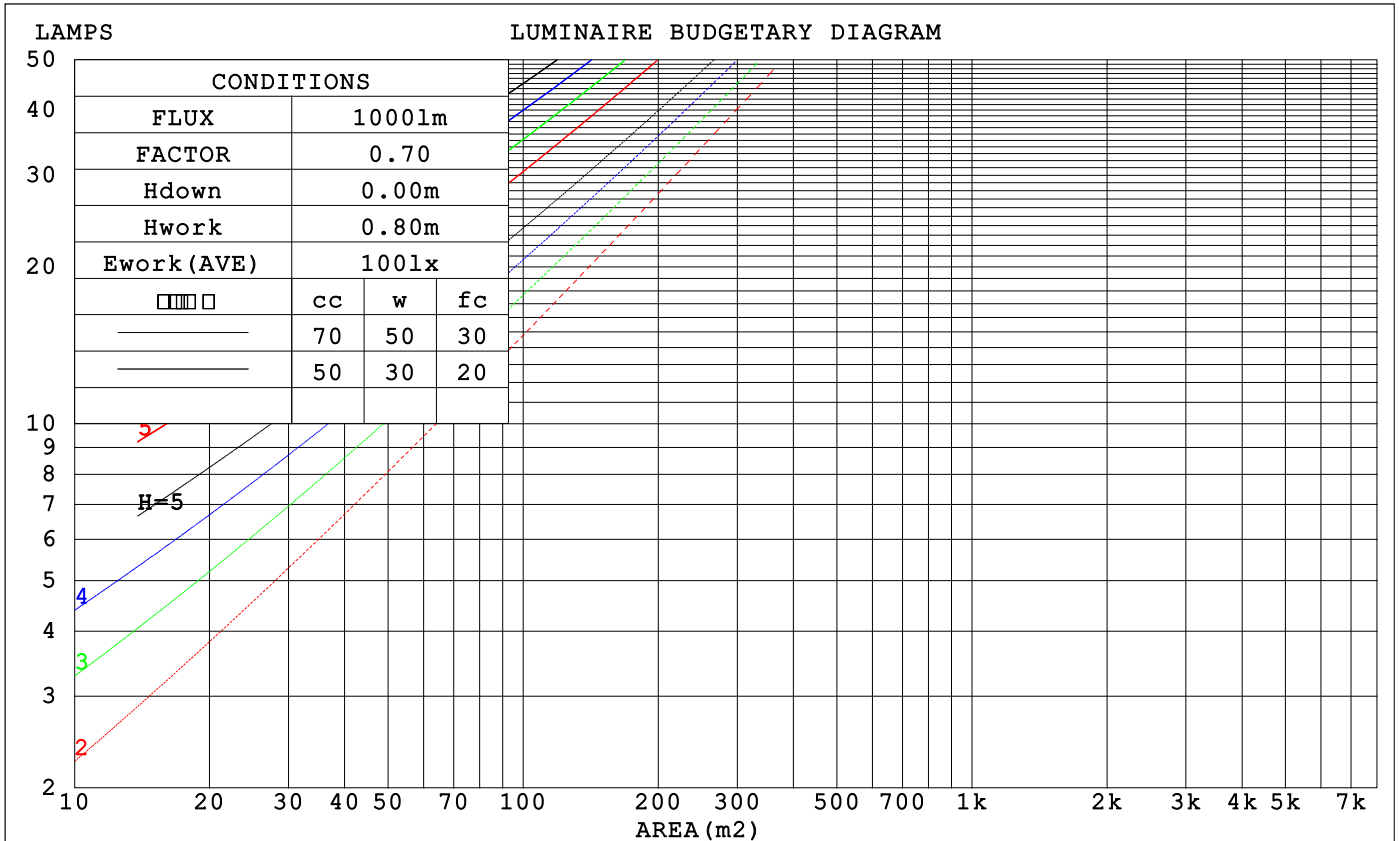
LUMINANCE cd/(m2)		
G (DEG)	C0/180	C90/270
85	51990	6687
80	31197	7439
75	23289	8266
70	18964	8889
65	16259	9362
60	14480	9676
55	13283	9883
50	12454	10026
45	11866	10128

C Range: 0 - 360DEG
 C Interval: 15.0DEG
 Test Speed: HIGH
 Temperature: 25.3°C
 Operators: DAMIN
 Test Date: 2023-03-03

Range: 0 - 180DEG
 Interval: 0.5DEG
 Test System: EVERFINE GO-2000B_V1 SYSTEM V2.00.471
 Humidity: 65.0%
 Test Distance: 4.880m [K=1.0000]
 Remarks:

CU AND LUMINAIRE BUDGETARY ESTIMATE DIAGRAM

□cc	80%			70%			50%			30%			10%			0
□w	50%	30%	10%	50%	30%	10%	50%	30%	10%	50%	30%	10%	50%	30%	10%	0
□fc	20%			20%			20%			20%			20%			0
RCR	RCR:Room Cavity Ratio						Coefficients of Utilization(CU)									
0.0	1.18	1.18	1.18	1.15	1.15	1.15	1.08	1.08	1.08	1.03	1.03	1.03	.97	.97	.97	.95
1.0	.98	.92	.87	.95	.90	.85	.89	.85	.81	.85	.81	.78	.80	.77	.75	.72
2.0	.83	.75	.68	.81	.73	.67	.76	.70	.64	.72	.67	.62	.68	.64	.60	.57
3.0	.72	.62	.55	.70	.61	.54	.66	.59	.52	.62	.56	.51	.59	.54	.49	.47
4.0	.63	.53	.46	.61	.52	.45	.58	.50	.44	.55	.48	.43	.52	.46	.41	.39
5.0	.56	.46	.39	.54	.45	.38	.52	.43	.37	.49	.42	.36	.47	.40	.35	.33
6.0	.50	.40	.33	.49	.40	.33	.46	.38	.32	.44	.37	.32	.42	.36	.31	.28
7.0	.45	.36	.29	.44	.35	.29	.42	.34	.28	.40	.33	.28	.38	.32	.27	.25
8.0	.41	.32	.26	.40	.32	.26	.38	.31	.25	.37	.30	.25	.35	.29	.24	.22
9.0	.38	.29	.23	.37	.28	.23	.35	.28	.22	.34	.27	.22	.32	.26	.22	.20
10.0	.35	.26	.21	.34	.26	.21	.32	.25	.20	.31	.25	.20	.30	.24	.20	.18



C Range: 0 - 360DEG
 C Interval: 15.0DEG
 Test Speed: HIGH
 Temperature:25.3°C
 Operators:DAMIN
 Test Date:2023-03-03

□ Range: 0 - 180DEG
 □ Interval: 0.5DEG
 Test System:EVERFINE GO-2000B_V1 SYSTEM V2.00.471
 Humidity:65.0%
 Test Distance:4.880m [K=1.0000]
 Remarks:

WEC AND CCEC

□cc	80%			70%			50%			30%			10%			0
□w	50%	30%	10%	50%	30%	10%	50%	30%	10%	50%	30%	10%	50%	30%	10%	0
□fc	20%			20%			20%			20%			20%			0
RCR	RCR:Room Cavity Ratio						Wall Exitance Coefficients (WEC)									
0.0	.406	.231	.073	.397	.227	.072	.381	.219	.070	.366	.211	.068	.352	.204	.066	
1.0	.350	.192	.059	.343	.189	.058	.328	.182	.057	.314	.176	.055	.301	.170	.054	
2.0	.310	.165	.049	.303	.162	.049	.290	.157	.048	.277	.152	.047	.266	.147	.046	
3.0	.278	.145	.043	.272	.142	.042	.260	.138	.041	.249	.134	.040	.239	.130	.040	
4.0	.252	.128	.037	.247	.127	.037	.236	.123	.036	.226	.119	.035	.217	.116	.035	
5.0	.230	.116	.033	.225	.114	.033	.216	.111	.032	.207	.108	.032	.199	.105	.031	
6.0	.212	.105	.030	.208	.103	.029	.199	.101	.029	.191	.098	.028	.183	.095	.028	
7.0	.196	.096	.027	.192	.095	.027	.185	.092	.026	.177	.090	.026	.170	.087	.025	
8.0	.183	.088	.025	.179	.087	.024	.172	.085	.024	.165	.083	.024	.159	.081	.023	
9.0	.171	.082	.023	.167	.081	.023	.161	.079	.022	.155	.077	.022	.149	.075	.022	
10.0	.171	.082	.023	.167	.081	.023	.161	.079	.022	.155	.077	.022	.149	.075	.022	

□cc	80%			70%			50%			30%			10%			0
□w	50%	30%	10%	50%	30%	10%	50%	30%	10%	50%	30%	10%	50%	30%	10%	0
□fc	20%			20%			20%			20%			20%			0
RCR	RCR:Room Cavity Ratio						Ceiling Cavity Exitance Coefficients (CCEC)									
0.0	.229	.229	.229	.196	.196	.196	.133	.133	.133	.077	.077	.077	.025	.025	.025	
1.0	.226	.194	.165	.193	.166	.142	.132	.114	.098	.076	.066	.057	.024	.021	.019	
2.0	.219	.171	.130	.188	.147	.112	.129	.102	.078	.074	.059	.046	.024	.019	.015	
3.0	.211	.154	.108	.181	.133	.093	.124	.092	.065	.072	.054	.039	.023	.017	.013	
4.0	.203	.141	.093	.174	.122	.081	.120	.085	.057	.069	.050	.034	.022	.016	.011	
5.0	.195	.131	.083	.168	.113	.072	.115	.079	.051	.067	.046	.030	.022	.015	.010	
6.0	.187	.123	.076	.161	.106	.066	.111	.074	.047	.064	.044	.028	.021	.014	.009	
7.0	.180	.116	.071	.155	.100	.062	.107	.070	.044	.062	.042	.026	.020	.014	.009	
8.0	.173	.110	.067	.149	.096	.058	.103	.067	.041	.060	.040	.025	.019	.013	.008	
9.0	.167	.105	.064	.143	.091	.056	.099	.064	.040	.058	.038	.024	.019	.012	.008	
10.0	.160	.101	.061	.138	.088	.054	.096	.062	.038	.056	.036	.023	.018	.012	.008	

C Range: 0 - 360DEG
 C Interval: 15.0DEG
 Test Speed: HIGH
 Temperature:25.3°C
 Operators:DAMIN
 Test Date:2023-03-03

□ Range: 0 - 180DEG
 □ Interval: 0.5DEG
 Test System:EVERFINE GO-2000B_V1 SYSTEM V2.00.471
 Humidity:65.0%
 Test Distance:4.880m [K=1.0000]
 Remarks:

UGR(Unified Glare Rating) Table

ceiling/cavity	0.7	0.7	0.5	0.5	0.3	0.7	0.7	0.5	0.5	0.3
walls	0.5	0.3	0.5	0.3	0.3	0.5	0.3	0.5	0.3	0.3
working plane	0.2	0.2	0.2	0.2	0.2	0.2	0.2	0.2	0.2	0.2
Room dimensions	Viewed crosswise					Viewed endwise				
x = 2H y = 2H	24.7	26.3	25.0	26.6	26.9	22.9	24.5	23.3	24.8	25.2
3H	27.5	28.9	27.8	29.3	29.6	24.5	26.0	24.9	26.4	26.7
4H	29.0	30.4	29.4	30.8	31.1	25.2	26.6	25.6	27.0	27.3
6H	30.6	32.0	31.0	32.3	32.7	25.7	27.0	26.1	27.4	27.8
8H	31.5	32.8	31.9	33.1	33.6	25.8	27.1	26.3	27.5	27.9
12H	32.4	33.6	32.8	34.0	34.4	26.0	27.2	26.4	27.6	28.0
4H 2H	25.3	26.7	25.7	27.1	27.5	24.1	25.5	24.4	25.8	26.2
3H	28.3	29.6	28.8	30.0	30.4	25.9	27.2	26.4	27.6	28.0
4H	30.1	31.2	30.5	31.7	32.1	26.8	27.9	27.2	28.4	28.8
6H	31.9	33.0	32.4	33.4	33.9	27.5	28.5	27.9	29.0	29.4
8H	32.9	33.9	33.4	34.3	34.8	27.7	28.7	28.2	29.2	29.7
12H	33.9	34.8	34.4	35.3	35.9	27.9	28.8	28.4	29.3	29.8
8H 4H	30.5	31.5	31.0	31.9	32.4	27.9	28.9	28.4	29.3	29.8
6H	32.6	33.5	33.1	34.0	34.5	28.9	29.8	29.5	30.3	30.8
8H	33.8	34.5	34.3	35.1	35.6	29.4	30.2	29.9	30.7	31.2
12H	35.1	35.7	35.6	36.3	36.9	29.8	30.4	30.3	31.0	31.6
12H 4H	30.5	31.4	31.0	31.9	32.4	28.2	29.1	28.7	29.6	30.1
6H	32.7	33.5	33.3	34.0	34.6	29.5	30.3	30.0	30.8	31.3
8H	34.0	34.7	34.6	35.2	35.8	30.1	30.8	30.7	31.3	31.9
Variations with the observer position at spacings(CIE Pub.117):										
S = 1.0H	+ 0.1 / - 0.1					+ 0.1 / - 0.1				
1.5H	+ 0.2 / - 0.3					+ 0.2 / - 0.2				
2.0H	+ 0.2 / - 0.4					+ 0.2 / - 0.3				

CIE Pub.117, 427.9 lm Total Lamp Luminous Flux Correct (8log(F/F0) = -2.9)
 Area: 0.01 m2

C Range: 0 - 360DEG
 C Interval: 15.0DEG
 Test Speed: HIGH
 Temperature:25.3°C
 Operators:DAMIN
 Test Date:2023-03-03

Range: 0 - 180DEG
 Interval: 0.5DEG
 Test System:EVERFINE GO-2000B_V1 SYSTEM V2.00.471
 Humidity:65.0%
 Test Distance:4.880m [K=1.0000]
 Remarks:

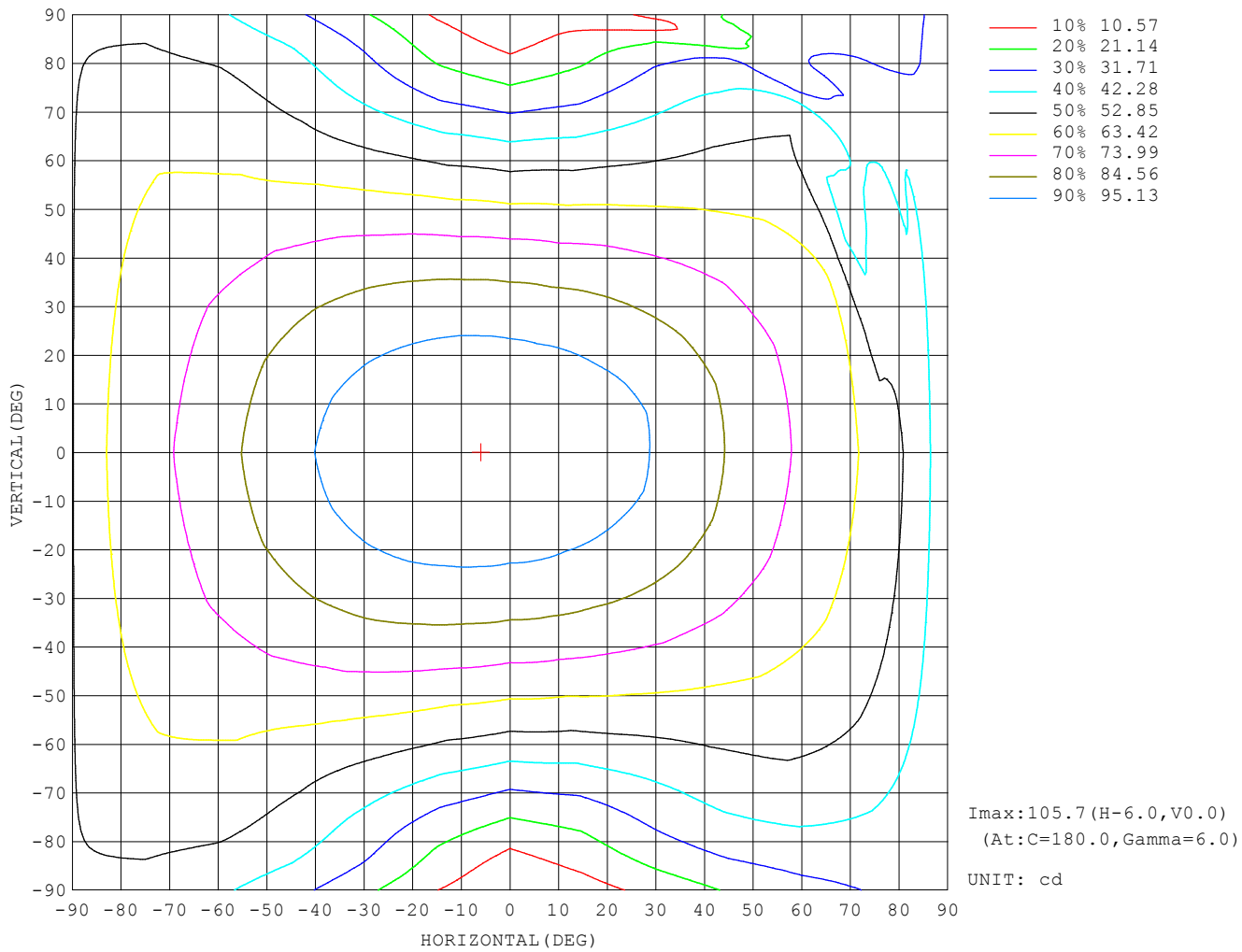
UTILIZATION FACTORS TABLE

REFLECTANCE										
Ceiling	0.8	0.8	0.8	0.7	0.7	0.7	0.5	0.5	0.5	0
Walls	0.7	0.5	0.3	0.7	0.5	0.3	0.7	0.5	0.3	0
Working plane	0.2	0.2	0.2	0.2	0.2	0.2	0.2	0.2	0.2	0
ROOM INDEX	UTILIZATION FACTORS (PERCENT) $k(RI) \times RCR = 5$									
$k = 0.60$	51	38	31	50	38	31	48	37	30	23
0.80	60	47	39	59	46	39	57	46	38	30
1.00	68	55	47	66	54	46	64	56	46	37
1.25	75	62	54	73	61	53	70	60	52	44
1.50	80	68	59	78	67	59	74	65	58	49
2.00	87	76	68	85	75	67	81	72	66	56
2.50	92	82	74	89	80	73	85	77	71	60
3.00	95	86	79	93	84	78	88	81	75	65
4.00	100	92	86	97	90	84	92	86	81	70
5.00	103	96	90	100	94	89	95	90	85	74
ROOM INDEX	UF (total)									Direct
According to DIN EN 13032-2 2004			Suspended				SHRNOM = 1.25			

C Range: 0 - 360DEG
 C Interval: 15.0DEG
 Test Speed: HIGH
 Temperature: 25.3°C
 Operators: DAMIN
 Test Date: 2023-03-03

Range: 0 - 180DEG
 Interval: 0.5DEG
 Test System: EVERFINE GO-2000B_V1 SYSTEM V2.00.471
 Humidity: 65.0%
 Test Distance: 4.880m [K=1.0000]
 Remarks:

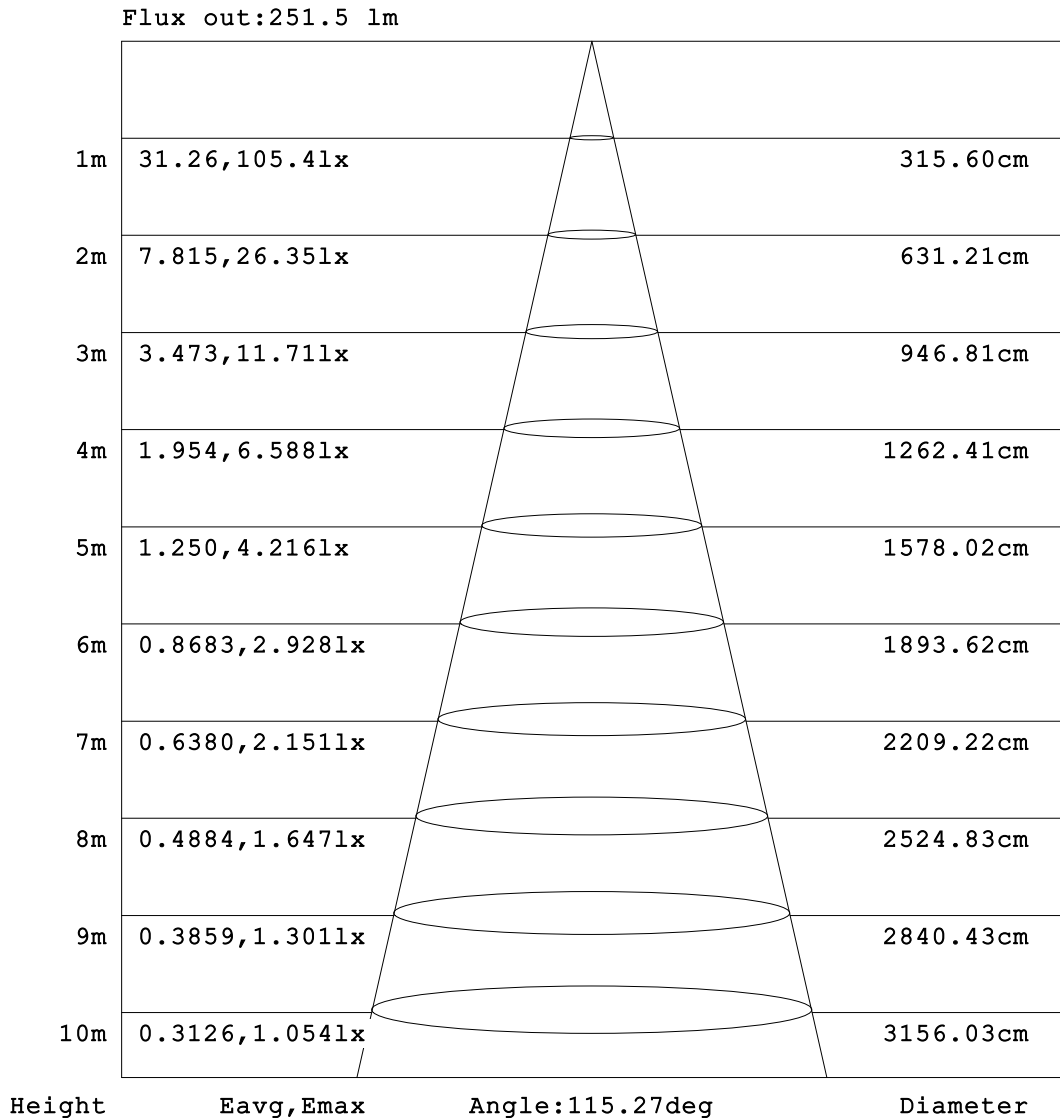
ISOCANDELA DIAGRAM



C Range: 0 - 360DEG
 C Interval: 15.0DEG
 Test Speed: HIGH
 Temperature: 25.3°C
 Operators: DAMIN
 Test Date: 2023-03-03

Range: 0 - 180DEG
 Interval: 0.5DEG
 Test System: EVERFINE GO-2000B_V1 SYSTEM V2.00.471
 Humidity: 65.0%
 Test Distance: 4.880m [K=1.0000]
 Remarks:

AAI Figure

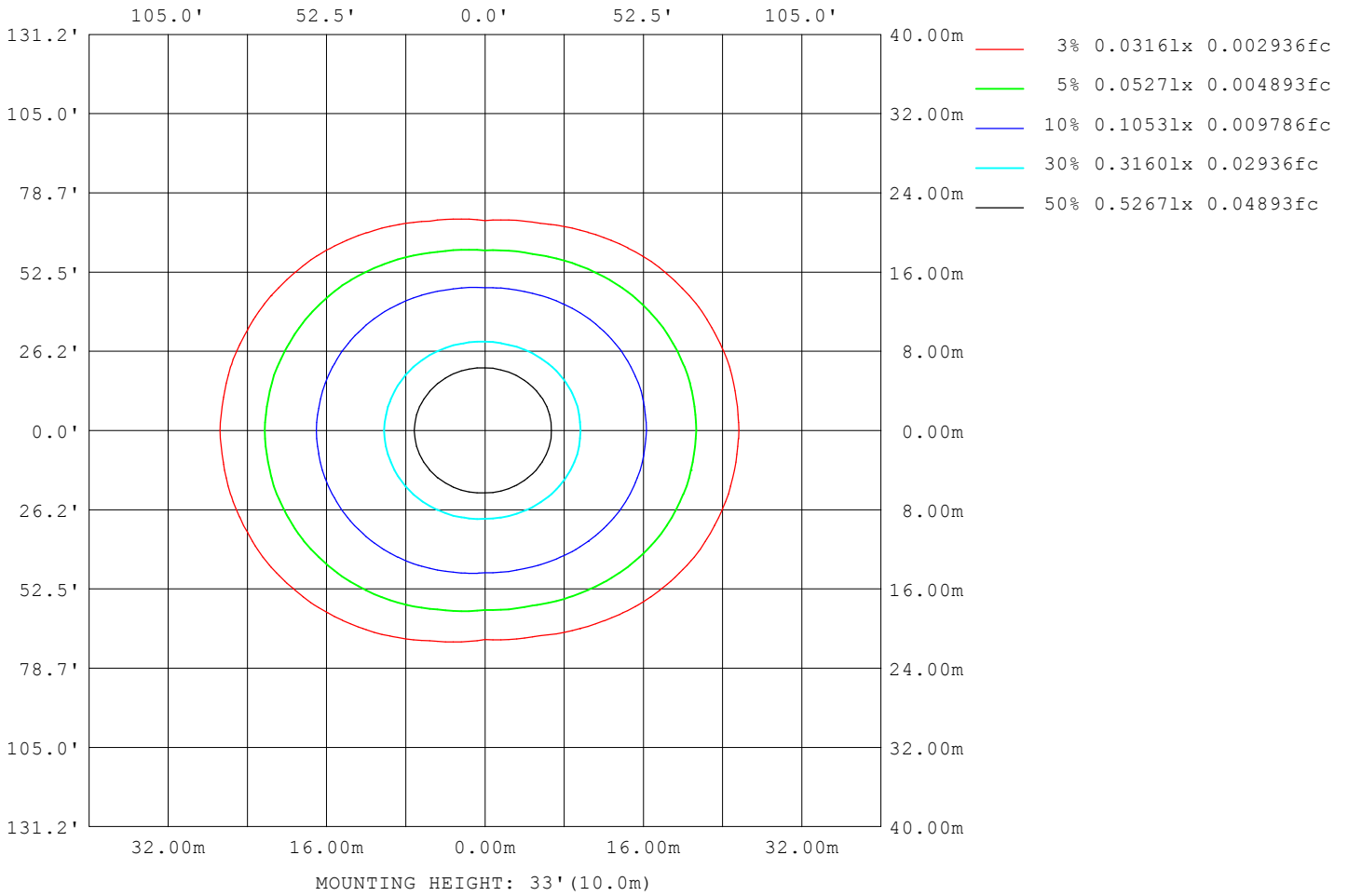


Note:The Curves indicate the illuminated area and the average illumination when the luminaire is at different distance.

C Range: 0 - 360DEG
 C Interval: 15.0DEG
 Test Speed: HIGH
 Temperature:25.3°C
 Operators:DAMIN
 Test Date:2023-03-03

Range: 0 - 180DEG
 Interval: 0.5DEG
 Test System:EVERFINE GO-2000B_V1 SYSTEM V2.00.471
 Humidity:65.0%
 Test Distance:4.880m [K=1.0000]
 Remarks:

ISOLUX DIAGRAM



C Range: 0 - 360DEG
 C Interval: 15.0DEG
 Test Speed: HIGH
 Temperature: 25.3°C
 Operators: DAMIN
 Test Date: 2023-03-03

Range: 0 - 180DEG
 Interval: 0.5DEG
 Test System: EVERFINE GO-2000B_V1 SYSTEM V2.00.471
 Humidity: 65.0%
 Test Distance: 4.880m [K=1.0000]
 Remarks:

LED Avg.L Report

NAME: LED Strip	TYPE: Indoor lighting	WEIGHT: 20g
SPEC.: COB LED	DIM.: 500*10*1.9MM	SERIAL No.: 20230302003
MFR.: EVERFINE	SUR.: 500*10*1.9MM	Shielding Angle:

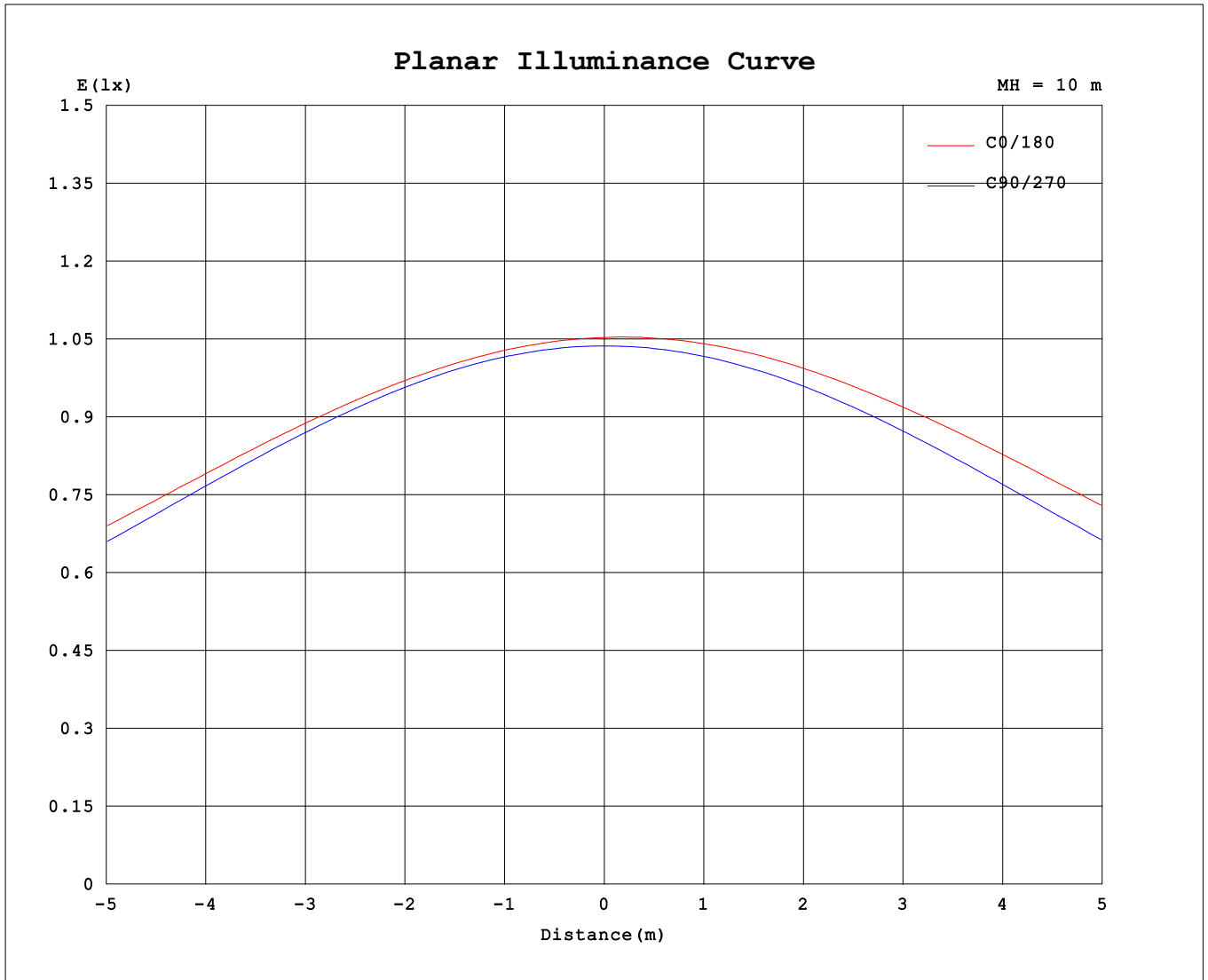
AvgL	cd/m2
L_0~180 (65) av	17236
L_0~180 (75) av	25105
L_0~180 (85) av	60942
L_90~270 (65) av	9433
L_90~270 (75) av	8380
L_90~270 (85) av	6958
L_45 (65) av	14117
L_45 (75) av	19262
L_45 (85) av	40506

Standard: GB/T 29293-2012

C Range: 0 - 360DEG
 C Interval: 15.0DEG
 Test Speed: HIGH
 Temperature:25.3°C
 Operators:DAMIN
 Test Date:2023-03-03

Range: 0 - 180DEG
 Interval: 0.5DEG
 Test System:EVERFINE GO-2000B_V1 SYSTEM V2.00.471
 Humidity:65.0%
 Test Distance:4.880m [K=1.0000]
 Remarks:

Planar Illuminance Curve



C Range: 0 - 360DEG
 C Interval: 15.0DEG
 Test Speed: HIGH
 Temperature: 25.3°C
 Operators: DAMIN
 Test Date: 2023-03-03

Range: 0 - 180DEG
 Interval: 0.5DEG
 Test System: EVERFINE GO-2000B_V1 SYSTEM V2.00.471
 Humidity: 65.0%
 Test Distance: 4.880m [K=1.0000]
 Remarks:

LUMINOUS DISTRIBUTION INTENSITY DATA

Table--1

UNIT: cd

C (DEG) \ □ (DEG)	0	15	30	45	60	75	90	105	120	135	150	165	180	195	210	225	240	255	270
0	105	105	104	104	104	104	104	104	104	104	105	105	105	105	104	104	104	104	104
5	105	104	104	103	103	103	103	103	104	104	105	105	106	105	104	104	104	104	103
10	103	103	102	102	102	102	102	102	103	103	104	105	106	105	104	103	103	103	102
15	102	102	101	100	100.0	100.0	99.9	101	101	102	103	104	105	104	103	102	102	101	100
20	99.7	99.6	98.5	97.8	97.2	97.1	97.1	97.9	99.1	100	102	103	104	103	102	100	99.4	98.2	97.4
25	97.2	97.1	95.9	94.9	93.9	93.5	93.4	94.6	96.1	98.2	100	102	102	101	99.8	98.0	96.4	94.9	93.9
30	94.4	94.2	92.8	91.3	89.9	89.2	89.1	90.5	92.6	95.3	97.6	99.5	101	99.4	97.4	95.1	92.8	90.8	89.6
35	91.1	90.9	89.2	87.3	85.3	84.1	84.0	85.8	88.5	91.9	94.7	96.9	98.1	96.8	94.5	91.6	88.6	86.0	84.5
40	87.6	87.3	85.3	82.7	80.1	78.5	78.1	80.4	83.9	87.9	91.4	94.0	95.2	93.8	91.1	87.6	83.8	80.6	78.8
45	83.9	83.4	81.0	77.8	74.5	71.9	71.6	74.5	78.7	83.5	87.6	90.6	92.0	90.5	87.3	83.1	78.5	74.4	72.1
50	80.1	79.3	76.5	72.4	68.3	65.1	64.4	67.6	73.1	78.7	83.5	87.0	88.5	86.8	83.1	78.2	72.5	67.7	65.0
55	76.2	75.2	71.9	66.9	61.9	57.6	56.7	60.5	67.0	73.4	79.2	83.1	84.7	82.9	78.7	73.0	66.3	60.4	57.3
60	72.4	70.9	67.3	61.5	55.2	49.8	48.4	52.9	60.6	68.1	74.7	79.1	80.9	78.9	74.3	67.5	59.8	52.7	49.0
65	68.7	67.0	62.9	56.1	48.5	41.7	39.6	45.1	54.1	62.8	70.3	75.1	77.0	74.8	69.4	62.0	53.1	44.6	40.2
70	64.9	63.1	58.5	51.2	42.2	33.7	30.4	37.3	47.7	57.7	66.0	71.1	73.2	71.0	65.1	56.7	46.4	36.3	31.1
75	60.3	58.5	53.8	46.2	36.2	25.9	21.4	29.6	41.9	53.2	62.2	67.7	69.7	67.5	61.2	52.0	40.3	28.4	22.0
80	54.2	52.4	47.7	40.3	30.5	19.0	12.9	22.7	36.8	49.1	58.4	64.0	66.1	63.9	57.4	47.8	34.9	21.2	13.5
85	45.3	43.7	39.2	32.4	23.2	12.7	5.83	17.1	31.6	43.9	52.9	58.5	60.9	58.5	52.2	42.6	29.7	15.2	6.30
90	33.9	32.5	28.2	22.2	14.1	5.97	1.15	10.7	23.6	35.4	44.2	49.8	52.4	49.9	43.8	34.1	22.2	9.13	0.68
95	20.1	18.8	14.8	9.43	3.04	0.64	0.48	0.91	8.53	21.9	31.5	38.0	41.6	38.4	32.2	21.2	7.72	0.56	0.47
100	5.13	4.32	2.30	1.09	0.72	0.56	0.48	0.63	0.90	3.40	7.87	12.6	16.9	13.1	7.28	1.83	0.68	0.54	0.49
105	1.02	0.98	0.91	0.79	0.67	0.57	0.52	0.59	0.80	0.89	1.09	1.98	2.17	1.36	0.83	0.73	0.62	0.54	0.54
110	0.90	0.87	0.82	0.74	0.66	0.62	0.58	0.58	0.64	0.72	0.82	0.85	0.81	0.79	0.73	0.66	0.61	0.58	0.61
115	0.87	0.86	0.81	0.77	0.71	0.68	0.64	0.64	0.64	0.69	0.75	0.76	0.79	0.77	0.74	0.69	0.66	0.64	0.68
120	0.91	0.92	0.87	0.84	0.77	0.74	0.70	0.70	0.70	0.76	0.79	0.81	0.84	0.81	0.80	0.75	0.73	0.71	0.74
125	0.96	0.97	0.93	0.89	0.83	0.80	0.76	0.76	0.77	0.81	0.85	0.87	0.89	0.86	0.85	0.81	0.79	0.77	0.80
130	0.99	1.01	0.97	0.94	0.89	0.86	0.83	0.83	0.83	0.87	0.91	0.93	0.93	0.91	0.90	0.87	0.85	0.83	0.86
135	1.03	1.04	1.01	0.99	0.94	0.92	0.89	0.89	0.89	0.93	0.96	0.99	0.97	0.95	0.95	0.91	0.91	0.89	0.92
140	1.06	1.08	1.05	1.03	0.99	0.97	0.94	0.95	0.95	0.99	1.01	1.04	1.00	0.99	0.99	0.96	0.96	0.95	0.97
145	1.09	1.11	1.09	1.07	1.03	1.02	1.00	1.00	1.00	1.03	1.05	1.09	1.04	1.03	1.03	1.01	1.01	1.01	1.03
150	1.13	1.14	1.12	1.12	1.08	1.08	1.05	1.06	1.05	1.08	1.09	1.14	1.08	1.07	1.07	1.06	1.06	1.06	1.08
155	1.16	1.18	1.16	1.15	1.13	1.12	1.11	1.11	1.10	1.12	1.13	1.18	1.12	1.10	1.11	1.10	1.11	1.11	1.13
160	1.20	1.21	1.19	1.19	1.17	1.17	1.16	1.17	1.17	1.17	1.17	1.22	1.16	1.15	1.16	1.14	1.16	1.15	1.17
165	1.23	1.24	1.23	1.23	1.21	1.22	1.20	1.22	1.21	1.23	1.22	1.25	1.21	1.18	1.20	1.19	1.21	1.20	1.22
170	1.26	1.27	1.25	1.26	1.24	1.26	1.24	1.25	1.25	1.26	1.26	1.29	1.25	1.23	1.24	1.23	1.25	1.24	1.25
175	1.28	1.29	1.27	1.28	1.27	1.29	1.27	1.29	1.28	1.30	1.30	1.34	1.28	1.26	1.27	1.26	1.28	1.27	1.29
180	1.31	1.29	1.29	1.29	1.29	1.29	1.29	1.31	1.31	1.31	1.32	1.36	1.30	1.29	1.29	1.29	1.29	1.29	1.30

C Range: 0 - 360DEG
 C Interval: 15.0DEG
 Test Speed: HIGH
 Temperature:25.3°C
 Operators:DAMIN
 Test Date:2023-03-03

□ Range: 0 - 180DEG
 □ Interval: 0.5DEG
 Test System:EVERFINE GO-2000B_V1 SYSTEM V2.00.471
 Humidity:65.0%
 Test Distance:4.880m [K=1.0000]
 Remarks:

LUMINOUS DISTRIBUTION INTENSITY DATA

Table--2

UNIT: cd

C (DEG) \ □ (DEG)	285	300	315	330	345														
0	104	104	104	105	105														
5	103	103	103	104	105														
10	102	102	102	103	104														
15	100.0	100	100	101	102														
20	97.2	97.6	98.0	99.1	100.0														
25	93.6	94.3	95.1	96.4	97.5														
30	89.4	90.5	91.7	93.4	94.6														
35	84.5	86.0	87.8	89.9	91.3														
40	78.8	81.0	83.3	86.0	87.7														
45	72.7	75.5	78.5	81.8	83.9														
50	65.9	69.3	73.5	77.5	79.9														
55	58.6	63.0	68.2	72.8	75.8														
60	51.0	56.6	62.8	68.3	71.8														
65	43.1	50.1	57.7	63.9	67.9														
70	35.1	43.9	52.9	59.7	63.8														
75	27.6	38.2	48.0	55.0	41.8														
80	20.8	32.5	40.6	45.9	41.6														
85	14.8	21.3	22.4	30.3	39.1														
90	2.84	14.0	21.8	25.6	27.1														
95	0.72	5.49	11.6	16.9	19.5														
100	0.56	0.69	1.46	3.88	5.95														
105	0.58	0.67	0.77	0.87	0.97														
110	0.63	0.70	0.77	0.84	0.92														
115	0.70	0.76	0.81	0.88	0.93														
120	0.76	0.82	0.87	0.93	0.98														
125	0.82	0.88	0.92	0.98	1.03														
130	0.88	0.93	0.97	1.03	1.06														
135	0.93	0.98	1.01	1.06	1.09														
140	0.98	1.03	1.05	1.09	1.12														
145	1.03	1.07	1.09	1.13	1.15														
150	1.08	1.11	1.13	1.16	1.19														
155	1.12	1.16	1.17	1.20	1.22														
160	1.17	1.19	1.20	1.23	1.26														
165	1.21	1.23	1.23	1.26	1.29														
170	1.25	1.27	1.26	1.29	1.32														
175	1.27	1.30	1.29	1.32	1.34														
180	1.30	1.31	1.31	1.33	1.37														

C Range: 0 - 360DEG
 C Interval: 15.0DEG
 Test Speed: HIGH
 Temperature:25.3°C
 Operators:DAMIN
 Test Date:2023-03-03

□ Range: 0 - 180DEG
 □ Interval: 0.5DEG
 Test System:EVERFINE GO-2000B_V1 SYSTEM V2.00.471
 Humidity:65.0%
 Test Distance:4.880m [K=1.0000]
 Remarks: