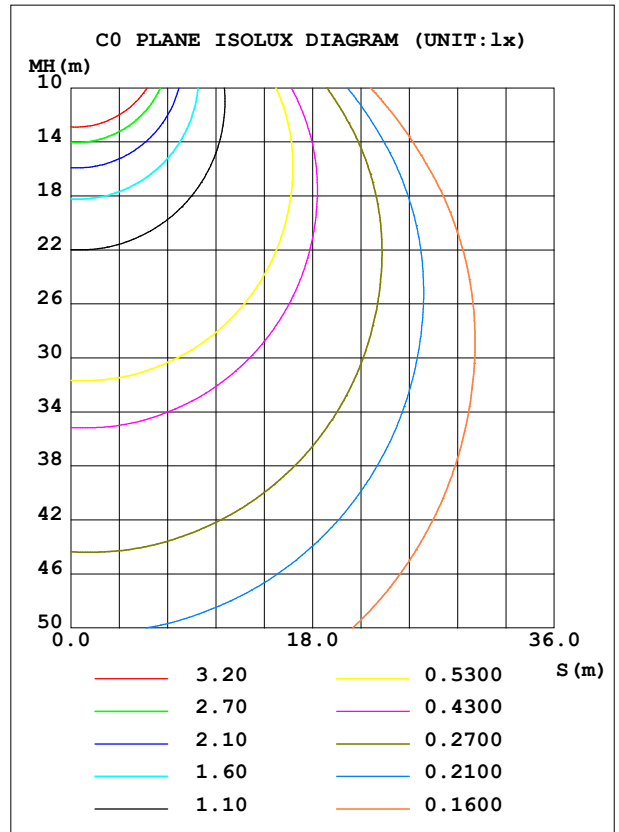
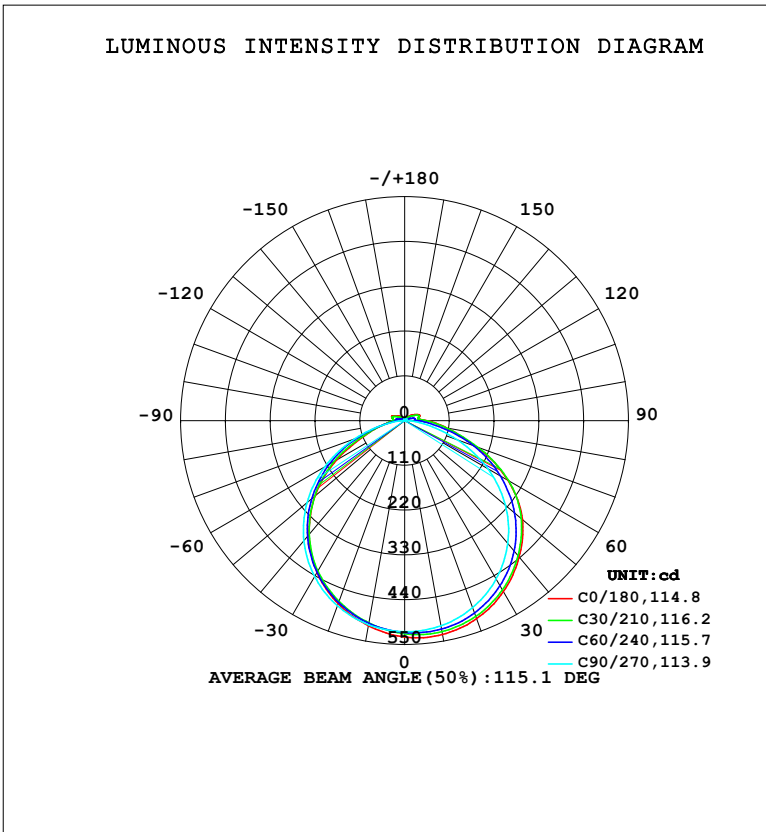


LUMINAIRE PHOTOMETRIC TEST REPORT

NAME: LED Strip	TYPE: Indoor lighting	WEIGHT: 20g
SPEC.: LED	DIM.: 1000*12*5MM	SERIAL No.: 20240301007
MFR.: EVERFINE	SUR.: 1000*12MM	Shielding Angle:

DATA OF LAMP		PHOTOMETRIC DATA			
NO. 24 (WCP) -UR-S 1M W-S		Eff: 85.86 lm/W			
NOMINAL POWER (W)	19.1441	Imax (cd)	534.9	S/MH (C0/180)	1.21
RATED VOLTAGE (V)	DC 24V	LOR (%)	100.0	S/MH (C90/270)	1.27
NOMINAL FLUX (lm)	1643.73	TOTAL FLUX (lm)	1643.7	η UP, DN (C0-180)	3.1, 48.1
LAMPS INSIDE	1	CIE CLASS	DIRECT	η UP, DN (C180-360)	2.9, 45.9
TEST VOLTAGE (V)	DC 24V	η up (%)	5.9	CIBSE SHR NOM	1.25
		η down (%)	94.1	CIBSE SHR MAX	1.35



C Range: 0 - 360DEG
 C Interval: 15.0DEG
 Test Speed: HIGH
 Temperature: 25.3°C
 Operators: DAMIN
 Test Date: 2024-03-05

γ Range: 0 - 180DEG
 γ Interval: 1.0DEG
 Test System: EVERFINE GO-2000B_V1 SYSTEM V2.00.471
 Humidity: 65.0%
 Test Distance: 4.880m [K=1.0000]
 Remarks:

ZONAL FLUX DIAGRAM

ZONAL FLUX DIAGRAM:

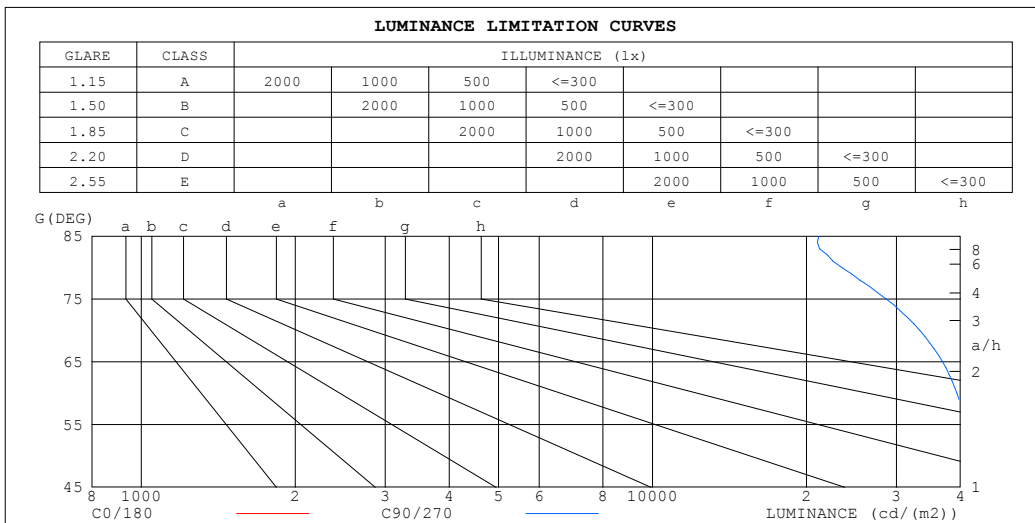
γ	C0	C45	C90	C135	C180	C225	C270	C315	γ	Φ zone	Φ total	%lum,lamp
10	533.3	523.9	511.7	504.4	511.4	504.1	509.1	520.9	0- 10	49.46	49.46	3.01,3.01
20	517.5	507.7	488.7	473.6	478.2	472.4	483.7	502.7	10- 20	142.2	191.7	11.7,11.7
30	485.2	475.9	449.4	429.2	430.8	427.1	442.5	468.8	20- 30	217.3	409.0	24.9,24.9
40	437.5	428.1	394.1	369.6	365.8	366.5	385.4	411.8	30- 40	265.1	674.1	41,41
50	377.6	365.8	323.2	294.8	287.1	291.8	312.8	344.2	40- 50	278.4	952.5	57.9,57.9
60	292.2	289.7	236.2	201.6	193.2	205.8	226.5	270.6	50- 60	253.0	1206	73.3,73.3
70	186.1	191.4	136.8	98.71	100.3	111.6	129.7	175.5	60- 70	188.1	1394	84.8,84.8
80	105.3	97.20	48.95	39.86	48.60	47.41	42.42	74.62	70- 80	105.0	1499	91.2,91.2
90	54.99	45.90	5.048	24.75	28.66	26.10	3.282	33.78	80- 90	47.29	1546	94.1,94.1
100	33.45	31.62	2.204	31.35	30.44	28.26	2.131	25.81	90-100	27.05	1573	95.7,95.7
110	39.72	31.26	2.536	21.35	33.58	23.33	2.678	32.51	100-110	25.37	1598	97.2,97.2
120	30.33	18.19	3.085	13.78	24.22	14.68	3.306	16.90	110-120	18.88	1617	98.4,98.4
130	20.86	11.28	3.696	7.766	17.26	8.681	3.905	8.484	120-130	11.46	1629	99.1,99.1
140	11.68	6.318	4.305	4.693	10.03	4.808	4.531	5.895	130-140	6.538	1635	99.5,99.5
150	6.302	5.247	5.091	5.307	5.381	5.235	5.115	5.629	140-150	3.643	1639	99.7,99.7
160	5.540	5.304	5.614	5.910	5.679	5.660	5.650	6.103	150-160	2.578	1641	99.9,99.9
170	5.806	5.800	6.034	6.455	6.050	6.001	6.089	6.481	160-170	1.685	1643	100,100
180	6.181	6.144	6.285	6.709	6.202	6.152	6.326	6.726	170-180	0.6012	1644	100,100
DEG	LUMINOUS INTENSITY:cd									UNIT:lm		

C Range: 0 - 360DEG
 C Interval: 15.0DEG
 Test Speed: HIGH
 Temperature:25.3°C
 Operators:DAMIN
 Test Date:2024-03-05

γ Range: 0 - 180DEG
 γ Interval: 1.0DEG
 Test System:EVERFINE GO-2000B_V1 SYSTEM V2.00.471
 Humidity:65.0%
 Test Distance:4.880m [K=1.0000]
 Remarks:

LUMINANCE LIMITATION CURVES

NAME: LED Strip	TYPE: Indoor lighting	WEIGHT: 20g
SPEC.: LED	DIM.: 1000*12*5MM	SERIAL No.: 20240301007
MFR.: EVERFINE	SUR.: 1000*12MM	Shielding Angle:



LUMINANCE cd/(m2)		
G (DEG)	C0/180	C90/270
85	74401	21125
80	50524	23489
75	45018	28629
70	45334	33343
65	47918	36910
60	48704	39375
55	49252	40919
50	48950	41902
45	48247	42502

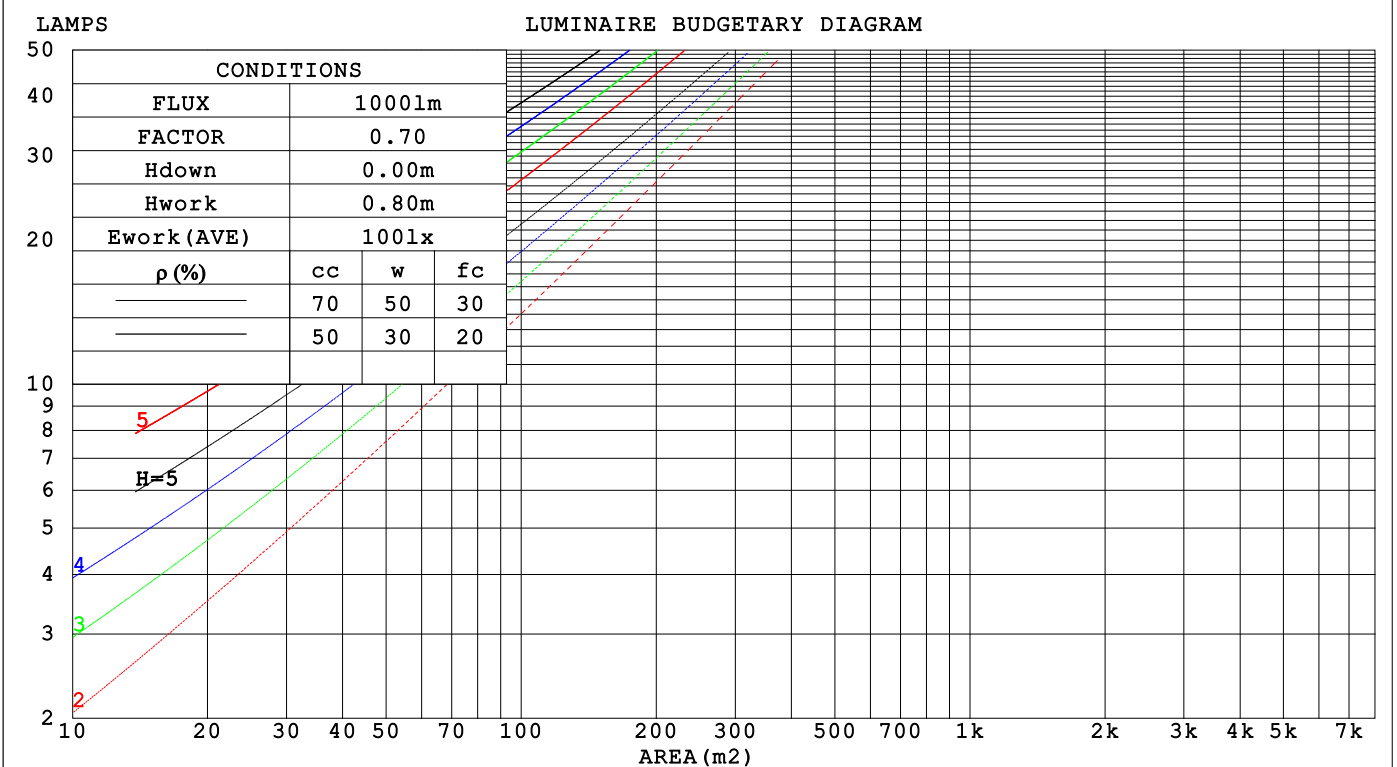
C Range: 0 - 360DEG
 C Interval: 15.0DEG
 Test Speed: HIGH
 Temperature: 25.3°C
 Operators: DAMIN
 Test Date: 2024-03-05

γ Range: 0 - 180DEG
 γ Interval: 1.0DEG
 Test System: EVERFINE GO-2000B_V1 SYSTEM V2.00.471
 Humidity: 65.0%
 Test Distance: 4.880m [K=1.0000]
 Remarks:

CU AND LUMINAIRE BUDGETARY ESTIMATE DIAGRAM

NAME: LED Strip	TYPE: Indoor lighting	WEIGHT: 20g
SPEC.: LED	DIM.: 1000*12*5MM	SERIAL No.: 20240301007
MFR.: EVERFINE	SUR.: 1000*12MM	Shielding Angle:

pcc	80%			70%			50%			30%			10%			0
	50%	30%	10%	50%	30%	10%	50%	30%	10%	50%	30%	10%	50%	30%	10%	0
p _w	0															
p _{fc}	0															
RCR	RCR:Room Cavity Ratio															
	Coefficients of Utilization(CU)															
0.0	1.18	1.18	1.18	1.14	1.14	1.14	1.08	1.08	1.08	1.02	1.02	1.02	.97	.97	.97	.94
1.0	1.02	.98	.94	.99	.95	.92	.94	.91	.88	.89	.86	.84	.84	.82	.80	.78
2.0	.89	.82	.76	.86	.80	.75	.82	.77	.72	.78	.73	.69	.74	.70	.67	.65
3.0	.78	.70	.63	.76	.68	.62	.72	.66	.60	.68	.63	.58	.65	.61	.57	.54
4.0	.69	.60	.53	.67	.59	.53	.64	.57	.51	.61	.55	.50	.58	.53	.49	.46
5.0	.61	.52	.46	.60	.51	.45	.57	.50	.44	.55	.48	.43	.52	.47	.42	.40
6.0	.55	.46	.40	.54	.45	.39	.52	.44	.39	.49	.43	.38	.47	.41	.37	.35
7.0	.50	.41	.35	.49	.41	.35	.47	.39	.34	.45	.38	.33	.43	.37	.33	.31
8.0	.46	.37	.31	.45	.36	.31	.43	.36	.30	.41	.35	.30	.39	.34	.29	.27
9.0	.42	.34	.28	.41	.33	.28	.39	.32	.27	.38	.31	.27	.36	.31	.26	.24
10.0	.38	.31	.25	.38	.30	.25	.36	.29	.25	.35	.29	.24	.34	.28	.24	.22



C Range: 0 - 360DEG
 C Interval: 15.0DEG
 Test Speed: HIGH
 Temperature: 25.3°C
 Operators: DAMIN
 Test Date: 2024-03-05

γ Range: 0 - 180DEG
 γ Interval: 1.0DEG
 Test System: EVERFINE GO-2000B_V1 SYSTEM V2.00.471
 Humidity: 65.0%
 Test Distance: 4.880m [K=1.0000]
 Remarks:

WEC AND CCEC

NAME: LED Strip	TYPE: Indoor lighting	WEIGHT: 20g
SPEC.: LED	DIM.: 1000*12*5MM	SERIAL No.: 20240301007
MFR.: EVERFINE	SUR.: 1000*12MM	Shielding Angle:

ρ_{cc}	80%			70%			50%			30%			10%			0
ρ_w	50%	30%	10%	50%	30%	10%	50%	30%	10%	50%	30%	10%	50%	30%	10%	0
ρ_{fc}	20%			20%			20%			20%			20%			0
RCR	RCR:Room Cavity Ratio						Wall Exitance Coefficients(WEC)									
0.0																
1.0	.318	.181	.057	.309	.176	.056	.292	.167	.053	.277	.160	.051	.262	.152	.049	
2.0	.294	.161	.049	.286	.158	.049	.271	.151	.047	.258	.144	.045	.245	.139	.044	
3.0	.271	.144	.043	.263	.141	.042	.250	.136	.041	.238	.130	.040	.227	.125	.039	
4.0	.249	.129	.038	.243	.127	.038	.231	.122	.037	.220	.118	.036	.210	.114	.035	
5.0	.230	.117	.034	.224	.115	.034	.214	.111	.033	.204	.107	.032	.194	.104	.031	
6.0	.213	.107	.031	.208	.105	.030	.198	.102	.030	.189	.098	.029	.181	.095	.028	
7.0	.198	.098	.028	.194	.096	.027	.185	.093	.027	.177	.091	.026	.169	.088	.026	
8.0	.185	.090	.025	.181	.089	.025	.173	.086	.025	.165	.084	.024	.159	.081	.024	
9.0	.173	.084	.023	.170	.083	.023	.162	.080	.023	.156	.078	.022	.149	.076	.022	
10.0	.163	.078	.022	.159	.077	.021	.153	.075	.021	.147	.073	.021	.141	.071	.020	

ρ_{cc}	80%			70%			50%			30%			10%			0
ρ_w	50%	30%	10%	50%	30%	10%	50%	30%	10%	50%	30%	10%	50%	30%	10%	0
ρ_{fc}	20%			20%			20%			20%			20%			0
RCR	RCR:Room Cavity Ratio						Ceiling Cavity Exitance Coefficients(CCEC)									
0.0	.236	.236	.236	.202	.202	.202	.138	.138	.138	.079	.079	.079	.025	.025	.025	
1.0	.227	.202	.179	.194	.173	.154	.133	.119	.107	.076	.069	.062	.024	.022	.020	
2.0	.219	.178	.144	.187	.153	.124	.128	.106	.087	.074	.062	.051	.024	.020	.017	
3.0	.211	.161	.120	.181	.139	.104	.124	.096	.073	.072	.056	.043	.023	.018	.014	
4.0	.203	.147	.105	.174	.127	.091	.120	.089	.064	.069	.052	.038	.022	.017	.012	
5.0	.196	.137	.094	.168	.119	.082	.116	.083	.058	.067	.049	.034	.022	.016	.011	
6.0	.189	.129	.086	.162	.112	.075	.112	.078	.053	.065	.046	.031	.021	.015	.010	
7.0	.182	.122	.080	.157	.106	.070	.108	.074	.050	.063	.044	.029	.020	.014	.010	
8.0	.176	.116	.076	.151	.101	.066	.105	.071	.047	.061	.042	.028	.020	.014	.009	
9.0	.170	.112	.072	.146	.097	.063	.101	.068	.045	.059	.040	.027	.019	.013	.009	
10.0	.164	.107	.070	.141	.093	.061	.098	.066	.043	.057	.039	.026	.019	.013	.009	

C Range: 0 - 360DEG
 C Interval: 15.0DEG
 Test Speed: HIGH
 Temperature:25.3°C
 Operators:DAMIN
 Test Date:2024-03-05

γ Range: 0 - 180DEG
 γ Interval: 1.0DEG
 Test System:EVERFINE GO-2000B_V1 SYSTEM V2.00.471
 Humidity:65.0%
 Test Distance:4.880m [K=1.0000]
 Remarks:

UGR(Unified Glare Rating) Table

NAME: LED Strip		TYPE: Indoor lighting					WEIGHT: 20g				
SPEC.: LED		DIM.: 1000*12*5MM					SERIAL No.: 20240301007				
MFR.: EVERFINE		SUR.: 1000*12MM					Shielding Angle:				
ceiling/cavity		0.7	0.7	0.5	0.5	0.3	0.7	0.7	0.5	0.5	0.3
walls		0.5	0.3	0.5	0.3	0.3	0.5	0.3	0.5	0.3	0.3
working plane		0.2	0.2	0.2	0.2	0.2	0.2	0.2	0.2	0.2	0.2
Room dimensions		Viewed crosswise					Viewed endwise				
x = 2H y = 2H		25.0	26.5	25.4	26.8	27.1	24.2	25.6	24.5	25.9	26.3
	3H	26.7	28.0	27.1	28.3	28.7	25.6	26.9	26.0	27.3	27.6
	4H	27.4	28.6	27.8	29.0	29.4	26.1	27.4	26.5	27.7	28.1
	6H	28.1	29.3	28.5	29.6	30.0	26.4	27.6	26.8	28.0	28.4
	8H	28.4	29.6	28.9	30.0	30.4	26.5	27.6	26.9	28.0	28.4
	12H	28.8	29.9	29.3	30.3	30.7	26.5	27.6	27.0	28.0	28.4
	4H 2H	25.6	26.9	26.0	27.2	27.6	25.0	26.3	25.4	26.6	27.0
	3H	27.5	28.6	27.9	29.0	29.4	26.7	27.8	27.1	28.2	28.6
	4H	28.3	29.3	28.8	29.8	30.2	27.3	28.3	27.8	28.7	29.2
	6H	29.2	30.1	29.7	30.6	31.1	27.7	28.6	28.2	29.1	29.6
	8H	29.7	30.5	30.2	31.0	31.5	27.9	28.7	28.4	29.2	29.7
	12H	30.2	30.9	30.7	31.4	31.9	28.0	28.7	28.5	29.2	29.8
	8H 4H	28.6	29.5	29.1	29.9	30.4	27.7	28.6	28.2	29.0	29.6
	6H	29.7	30.4	30.3	30.9	31.5	28.4	29.1	28.9	29.6	30.2
	8H	30.3	30.9	30.9	31.5	32.1	28.7	29.3	29.2	29.8	30.4
	12H	31.0	31.6	31.6	32.1	32.7	28.9	29.4	29.5	30.0	30.6
	12H 4H	28.6	29.4	29.2	29.9	30.4	27.8	28.6	28.3	29.1	29.6
	6H	29.8	30.4	30.4	30.9	31.5	28.6	29.2	29.1	29.7	30.3
	8H	30.5	31.0	31.1	31.6	32.2	28.9	29.5	29.5	30.0	30.6
Variations with the observer position at spacings(CIE Pub.117):											
S = 1.0H		+ 0.1 / - 0.2					+ 0.2 / - 0.2				
1.5H		+ 0.2 / - 0.3					+ 0.2 / - 0.4				
2.0H		+ 0.2 / - 0.4					+ 0.2 / - 0.5				

CIE Pub.117, 1644 lm Total Lamp Luminous Flux Correct (8log(F/F0) = 1.7)
 Area: 0.012 m2

C Range: 0 - 360DEG
 C Interval: 15.0DEG
 Test Speed: HIGH
 Temperature:25.3°C
 Operators:DAMIN
 Test Date:2024-03-05

γ Range: 0 - 180DEG
 γ Interval: 1.0DEG
 Test System:EVERFINE GO-2000B_V1 SYSTEM V2.00.471
 Humidity:65.0%
 Test Distance:4.880m [K=1.0000]
 Remarks:

UTILIZATION FACTORS TABLE

NAME: LED Strip	TYPE: Indoor lighting	WEIGHT: 20g
SPEC.: LED	DIM.: 1000*12*5MM	SERIAL No.: 20240301007
MFR.: EVERFINE	SUR.: 1000*12MM	Shielding Angle:

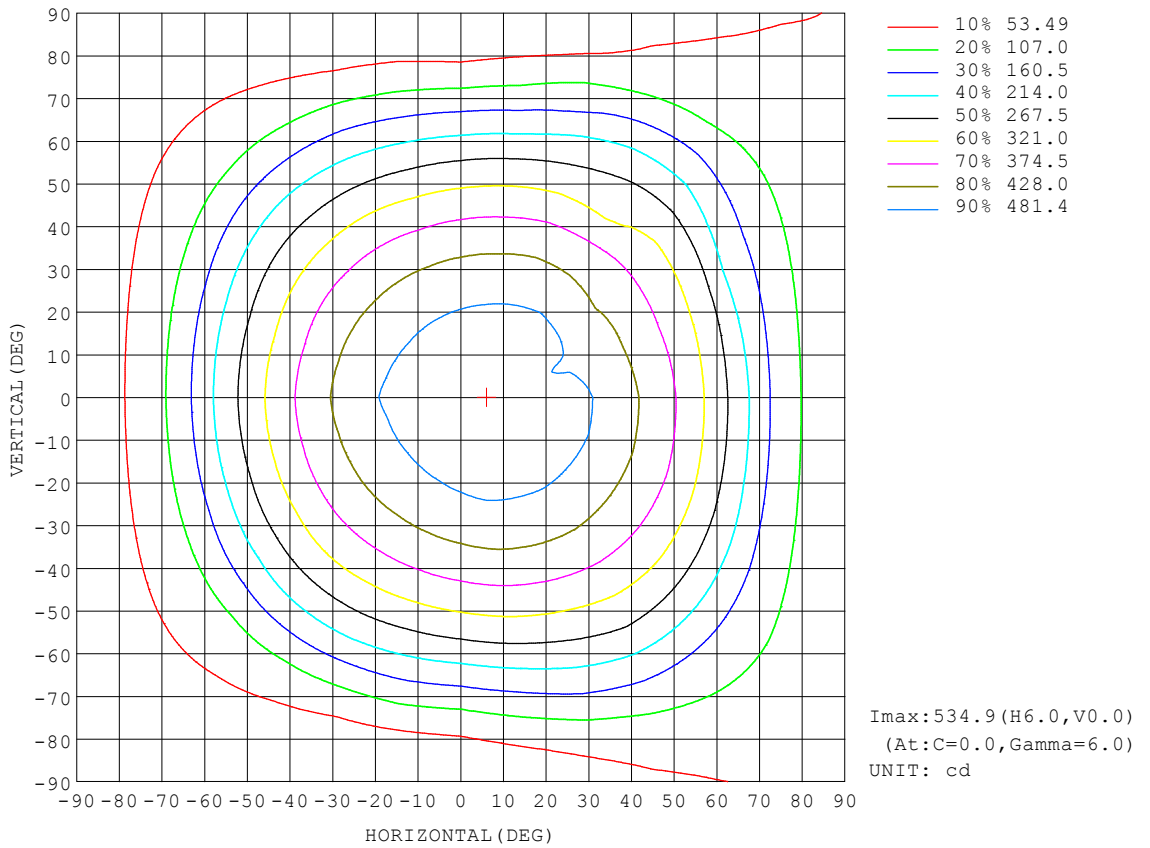
REFLECTANCE										
Ceiling	0.8	0.8	0.8	0.7	0.7	0.7	0.5	0.5	0.5	0
Walls	0.7	0.5	0.3	0.7	0.5	0.3	0.7	0.5	0.3	0
Working plane	0.2	0.2	0.2	0.2	0.2	0.2	0.2	0.2	0.2	0
ROOM INDEX	UTILIZATION FACTORS (PERCENT) $k(RI) \times RCR = 5$									
$k = 0.60$	55	43	36	54	43	36	53	42	36	29
0.80	65	53	46	64	53	45	62	52	45	38
1.00	73	62	54	72	61	54	69	62	53	46
1.25	80	70	62	79	69	62	76	67	61	53
1.50	85	75	68	84	74	67	80	72	66	57
2.00	92	83	77	90	82	76	86	79	74	65
2.50	96	88	82	94	86	81	89	83	78	69
3.00	100	93	87	97	91	85	92	87	82	73
4.00	104	98	93	101	96	91	96	91	88	77
5.00	106	101	97	103	99	95	98	94	91	80
ROOM INDEX	UF(total)									Direct
According to DIN EN 13032-2 2004			Suspended				SHRNOM = 1.25			

C Range: 0 - 360DEG
 C Interval: 15.0DEG
 Test Speed: HIGH
 Temperature: 25.3°C
 Operators: DAMIN
 Test Date: 2024-03-05

γ Range: 0 - 180DEG
 γ Interval: 1.0DEG
 Test System: EVERFINE GO-2000B_V1 SYSTEM V2.00.471
 Humidity: 65.0%
 Test Distance: 4.880m [K=1.0000]
 Remarks:

ISOCANDELA DIAGRAM

NAME: LED Strip	TYPE: Indoor lighting	WEIGHT: 20g
SPEC.: LED	DIM.: 1000*12*5MM	SERIAL No.: 20240301007
MFR.: EVERFINE	SUR.: 1000*12MM	Shielding Angle:

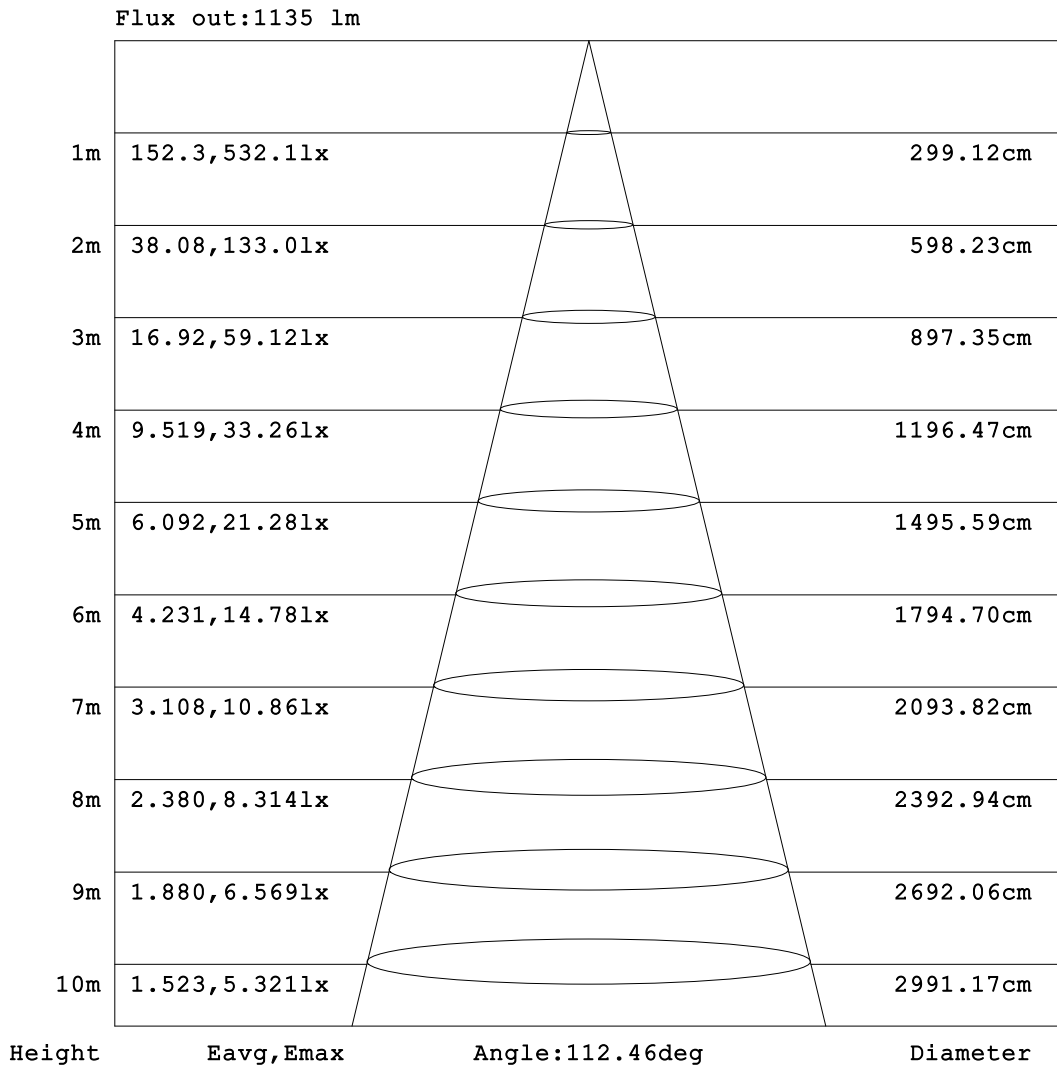


C Range: 0 - 360DEG
 C Interval: 15.0DEG
 Test Speed: HIGH
 Temperature: 25.3°C
 Operators: DAMIN
 Test Date: 2024-03-05

γ Range: 0 - 180DEG
 γ Interval: 1.0DEG
 Test System: EVERFINE GO-2000B_V1 SYSTEM V2.00.471
 Humidity: 65.0%
 Test Distance: 4.880m [K=1.0000]
 Remarks:

AAI Figure

NAME: LED Strip	TYPE: Indoor lighting	WEIGHT: 20g
SPEC.: LED	DIM.: 1000*12*5MM	SERIAL No.: 20240301007
MFR.: EVERFINE	SUR.: 1000*12MM	Shielding Angle:



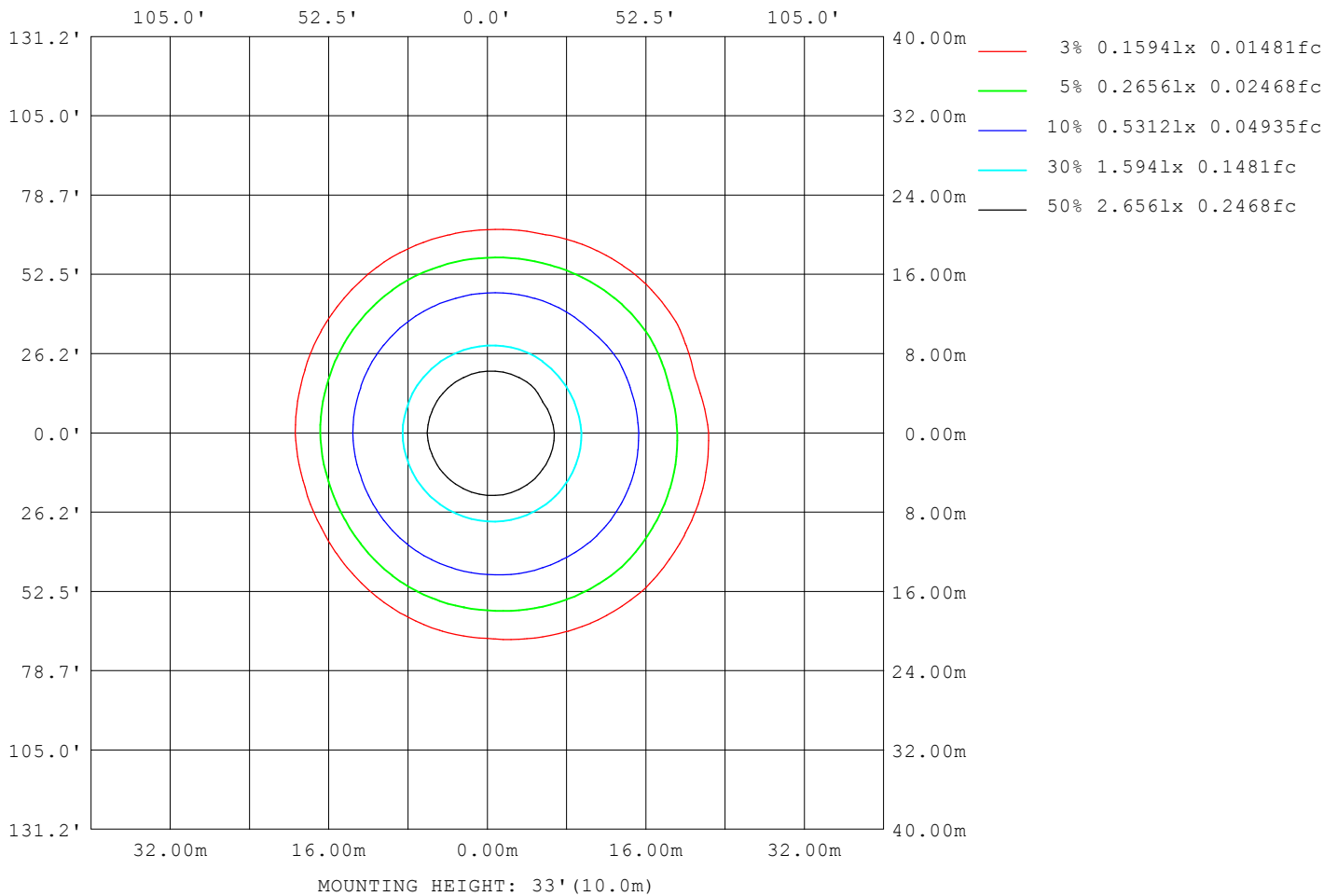
Note: The Curves indicate the illuminated area and the average illumination when the luminaire is at different distance.

C Range: 0 - 360DEG
 C Interval: 15.0DEG
 Test Speed: HIGH
 Temperature: 25.3°C
 Operators: DAMIN
 Test Date: 2024-03-05

γ Range: 0 - 180DEG
 γ Interval: 1.0DEG
 Test System: EVERFINE GO-2000B_V1 SYSTEM V2.00.471
 Humidity: 65.0%
 Test Distance: 4.880m [K=1.0000]
 Remarks:

ISOLUX DIAGRAM

NAME: LED Strip	TYPE: Indoor lighting	WEIGHT: 20g
SPEC.: LED	DIM.: 1000*12*5MM	SERIAL No.: 20240301007
MFR.: EVERFINE	SUR.: 1000*12MM	Shielding Angle:



C Range: 0 - 360DEG
 C Interval: 15.0DEG
 Test Speed: HIGH
 Temperature: 25.3°C
 Operators: DAMIN
 Test Date: 2024-03-05

γ Range: 0 - 180DEG
 γ Interval: 1.0DEG
 Test System: EVERFINE GO-2000B_V1 SYSTEM V2.00.471
 Humidity: 65.0%
 Test Distance: 4.880m [K=1.0000]
 Remarks:

LED Avg.L Report

NAME: LED Strip	TYPE: Indoor lighting	WEIGHT: 20g
SPEC.: LED	DIM.: 1000*12*5MM	SERIAL No.: 20240301007
MFR.: EVERFINE	SUR.: 1000*12MM	Shielding Angle:

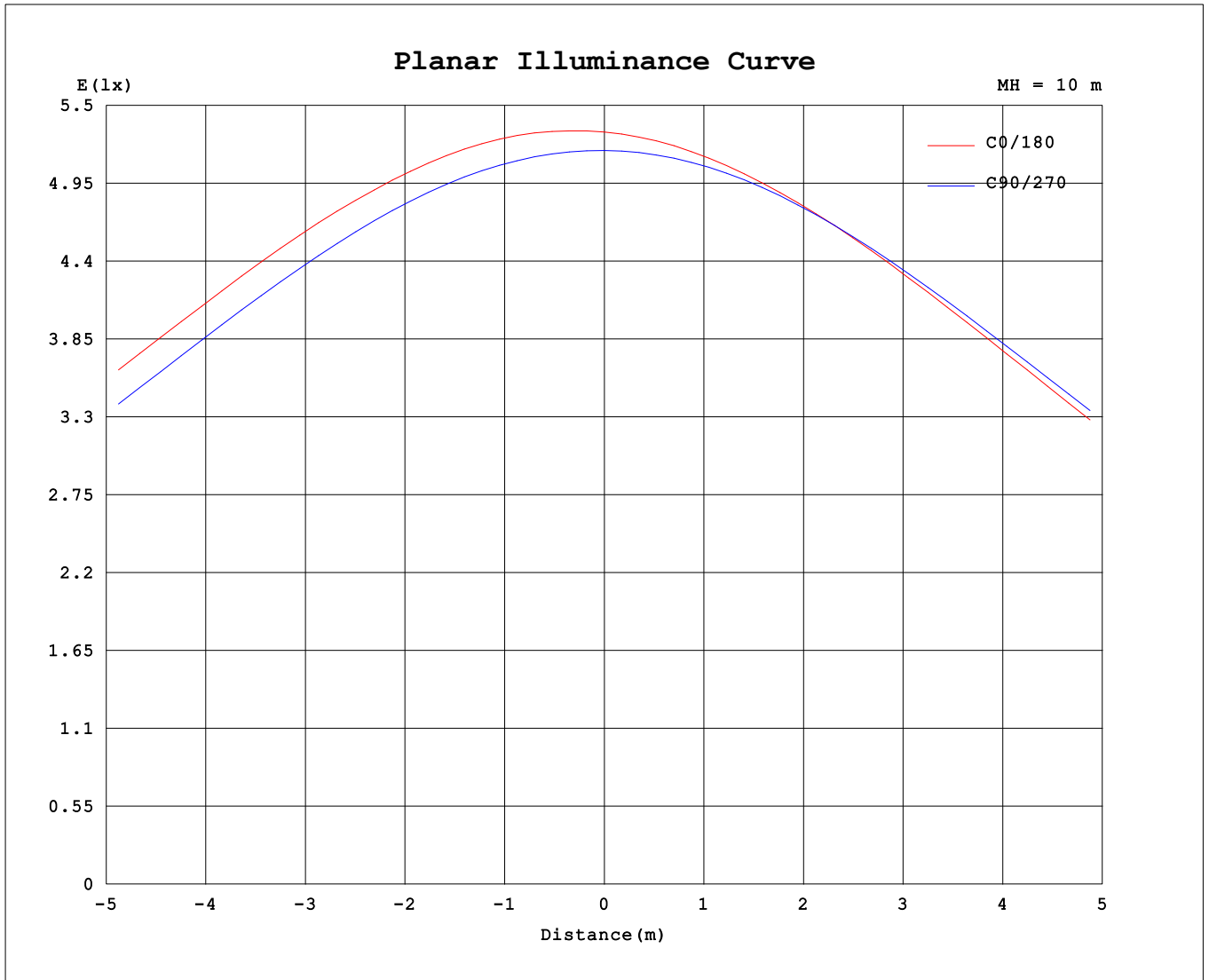
AvgL	cd/m2
L_0~180 (65) av	37894
L_0~180 (75) av	34047
L_0~180 (85) av	54936
L_90~270 (65) av	36084
L_90~270 (75) av	27679
L_90~270 (85) av	18033
L_45 (65) av	38357
L_45 (75) av	31562
L_45 (85) av	43228

Standard: GB/T 29293-2012

C Range: 0 - 360DEG
 C Interval: 15.0DEG
 Test Speed: HIGH
 Temperature:25.3°C
 Operators:DAMIN
 Test Date:2024-03-05

γ Range: 0 - 180DEG
 γ Interval: 1.0DEG
 Test System:EVERFINE GO-2000B_V1 SYSTEM V2.00.471
 Humidity:65.0%
 Test Distance:4.880m [K=1.0000]
 Remarks:

Planar Illuminance Curve



C Range: 0 - 360DEG
 C Interval: 15.0DEG
 Test Speed: HIGH
 Temperature: 25.3°C
 Operators: DAMIN
 Test Date: 2024-03-05

γ Range: 0 - 180DEG
 γ Interval: 1.0DEG
 Test System: EVERFINE GO-2000B_V1 SYSTEM V2.00.471
 Humidity: 65.0%
 Test Distance: 4.880m [K=1.0000]
 Remarks:

LUMINOUS DISTRIBUTION INTENSITY DATA

NAME: LED Strip	TYPE: Indoor lighting	WEIGHT: 20g
SPEC.: LED	DIM.: 1000*12*5MM	SERIAL No.: 20240301007
MFR.: EVERFINE	SUR.: 1000*12MM	Shielding Angle:

Table--1

UNIT: cd

C (DEG) \ γ (DEG)	0	15	30	45	60	75	90	105	120	135	150	165	180	195	210	225	240	255	270
0	531	528	523	522	520	520	518	518	519	520	524	524	531	528	523	522	520	520	518
5	535	532	527	525	522	520	517	515	514	514	516	517	523	519	516	515	515	515	516
10	533	531	527	524	520	516	512	508	506	504	505	507	511	507	504	504	505	507	509
15	528	526	521	518	514	509	502	497	493	491	491	492	497	492	490	490	492	495	498
20	518	517	512	508	503	497	489	482	477	474	473	473	478	474	472	472	475	479	484
25	504	503	498	494	487	481	471	463	457	453	452	452	457	452	451	451	455	459	465
30	485	485	480	476	468	461	449	440	433	429	427	427	431	426	426	427	430	435	442
35	463	464	459	454	446	437	424	414	406	401	398	398	401	396	398	399	403	408	416
40	437	439	433	428	418	408	394	383	375	370	365	363	366	362	365	366	371	376	385
45	409	411	405	398	387	375	361	349	340	335	327	325	328	324	328	331	336	341	351
50	378	380	374	366	353	339	323	311	302	295	286	284	287	285	289	292	298	303	313
55	339	342	338	329	313	299	282	270	261	250	239	237	242	240	245	250	256	262	271
60	292	297	295	290	272	254	236	226	215	202	190	188	193	194	200	206	214	219	227
65	243	247	245	243	227	207	187	178	164	150	137	136	141	142	150	159	169	174	179
70	186	192	191	191	180	158	137	130	112	98.7	92.4	95.8	100	101	104	112	122	127	130
75	140	145	142	139	130	110	88.9	82.6	65.8	60.9	62.7	66.9	71.7	72.1	72.3	71.3	78.2	84.4	83.0
80	105	109	104	97.2	85.3	68.6	48.9	42.0	37.5	39.9	42.4	45.9	48.6	49.7	48.7	47.4	43.7	46.5	42.4
85	77.8	80.5	74.3	67.2	53.3	37.4	22.1	20.6	24.7	28.5	31.9	35.1	37.1	37.8	36.4	33.6	27.3	20.8	15.6
90	55.0	57.7	52.6	45.9	33.8	20.4	5.05	13.9	21.6	24.7	26.8	28.5	28.7	28.9	28.5	26.1	20.8	11.5	3.28
95	39.4	41.9	38.8	33.5	25.5	14.6	2.13	11.6	24.8	27.7	28.8	29.4	27.5	27.6	27.4	26.0	20.6	9.85	2.06
100	33.5	34.9	33.4	31.6	26.6	12.0	2.20	7.65	22.3	31.4	32.7	33.1	30.4	30.7	30.5	28.3	21.9	7.58	2.13
105	38.1	38.6	37.6	34.5	24.1	8.01	2.28	4.71	15.2	28.7	34.7	35.7	33.1	33.0	32.2	28.4	17.3	5.32	2.39
110	39.7	39.9	37.2	31.3	18.3	5.93	2.54	3.11	11.8	21.4	30.3	34.7	33.6	33.0	30.6	23.3	12.5	3.60	2.68
115	35.9	35.8	32.4	25.0	13.0	4.00	2.78	2.91	8.98	17.0	24.0	29.4	29.6	28.7	25.0	18.0	9.99	3.25	2.98
120	30.3	29.7	25.8	18.2	10.3	3.64	3.09	3.20	6.53	13.8	19.8	24.2	24.2	23.4	20.3	14.7	7.54	3.47	3.31
125	25.2	24.2	20.2	14.8	7.24	3.63	3.39	3.52	4.44	10.9	16.5	20.7	20.5	19.8	17.0	11.8	5.04	3.74	3.61
130	20.9	19.9	16.2	11.3	5.68	3.70	3.70	3.79	4.03	7.77	13.2	17.2	17.3	16.5	13.8	8.68	4.24	4.04	3.90
135	16.2	15.4	12.4	8.20	4.93	3.91	4.00	4.16	4.27	5.26	9.71	13.7	13.9	13.1	10.4	5.64	4.44	4.34	4.22
140	11.7	11.0	8.72	6.32	4.75	4.19	4.30	4.43	4.60	4.69	6.08	9.54	10.0	9.05	6.68	4.81	4.69	4.63	4.53
145	7.79	7.62	6.62	5.51	4.67	4.50	4.60	4.82	4.90	4.93	5.02	6.29	6.46	5.93	5.18	5.00	4.95	4.91	4.83
150	6.30	6.22	5.80	5.25	4.79	4.98	5.09	5.21	5.27	5.31	5.24	5.16	5.38	5.29	5.25	5.24	5.21	5.19	5.12
155	5.86	5.79	5.49	5.12	5.13	5.28	5.36	5.50	5.58	5.61	5.58	5.40	5.47	5.45	5.46	5.46	5.44	5.44	5.38
160	5.54	5.46	5.32	5.30	5.39	5.54	5.61	5.76	5.85	5.91	5.88	5.73	5.68	5.64	5.66	5.66	5.66	5.67	5.65
165	5.54	5.50	5.51	5.56	5.64	5.77	5.84	5.99	6.12	6.18	6.21	6.14	5.88	5.83	5.84	5.84	5.86	5.88	5.88
170	5.81	5.76	5.76	5.80	5.87	5.98	6.03	6.17	6.33	6.45	6.53	6.56	6.05	5.99	5.99	6.00	6.03	6.05	6.09
175	6.03	5.99	5.97	6.01	6.06	6.15	6.19	6.32	6.48	6.65	6.82	6.94	6.16	6.10	6.10	6.11	6.15	6.19	6.24
180	6.18	6.15	6.12	6.14	6.19	6.25	6.28	6.38	6.54	6.71	7.00	7.38	6.20	6.15	6.13	6.15	6.19	6.26	6.33

C Range: 0 - 360DEG
 C Interval: 15.0DEG
 Test Speed: HIGH
 Temperature:25.3°C
 Operators:DAMIN
 Test Date:2024-03-05

γ Range: 0 - 180DEG
 γ Interval: 1.0DEG
 Test System:EVERFINE GO-2000B_V1 SYSTEM V2.00.471
 Humidity:65.0%
 Test Distance:4.880m [K=1.0000]
 Remarks:

LUMINOUS DISTRIBUTION INTENSITY DATA

NAME: LED Strip	TYPE: Indoor lighting	WEIGHT: 20g
SPEC.: LED	DIM.: 1000*12*5MM	SERIAL No.: 20240301007
MFR.: EVERFINE	SUR.: 1000*12MM	Shielding Angle:

Table--2

UNIT: cd

C (DEG) \ γ (DEG)	285	300	315	330	345														
0	518	519	520	524	524														
5	517	520	523	527	525														
10	512	516	521	526	517														
15	502	509	514	520	510														
20	489	497	503	510	491														
25	472	480	488	492	477														
30	451	460	469	461	468														
35	425	437	443	434	450														
40	396	408	412	416	425														
45	362	374	379	391	396														
50	325	335	344	360	366														
55	283	296	302	326	329														
60	238	253	271	286	283														
65	189	211	227	234	220														
70	139	157	175	183	172														
75	94.7	115	121	125	131														
80	54.7	67.4	74.6	86.9	97.9														
85	24.4	31.8	51.6	62.1	71.6														
90	10.1	23.5	33.8	43.3	50.9														
95	9.50	17.1	24.0	31.4	36.0														
100	9.97	22.7	25.8	28.2	30.5														
105	6.53	22.8	34.4	33.8	34.4														
110	4.78	16.4	32.5	36.0	37.9														
115	4.15	11.6	23.2	33.9	36.2														
120	3.70	8.03	16.9	26.1	31.3														
125	3.91	6.03	11.6	19.7	23.8														
130	4.12	5.29	8.48	14.1	21.1														
135	4.42	4.71	6.92	9.65	16.0														
140	4.70	4.93	5.90	7.65	11.6														
145	4.97	5.19	5.43	6.48	8.44														
150	5.25	5.45	5.63	5.99	6.82														
155	5.51	5.68	5.88	6.18	6.78														
160	5.74	5.89	6.10	6.40	7.03														
165	5.95	6.10	6.29	6.60	7.27														
170	6.13	6.29	6.48	6.77	7.45														
175	6.29	6.43	6.62	6.92	7.59														
180	6.40	6.53	6.73	6.99	7.44														

C Range: 0 - 360DEG
 C Interval: 15.0DEG
 Test Speed: HIGH
 Temperature:25.3°C
 Operators:DAMIN
 Test Date:2024-03-05

γ Range: 0 - 180DEG
 γ Interval: 1.0DEG
 Test System:EVERFINE GO-2000B_V1 SYSTEM V2.00.471
 Humidity:65.0%
 Test Distance:4.880m [K=1.0000]
 Remarks: