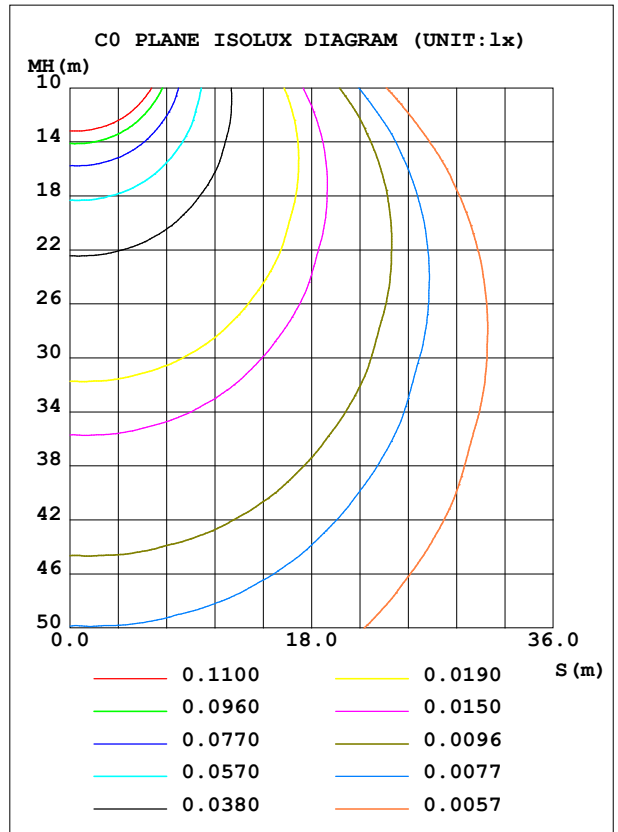
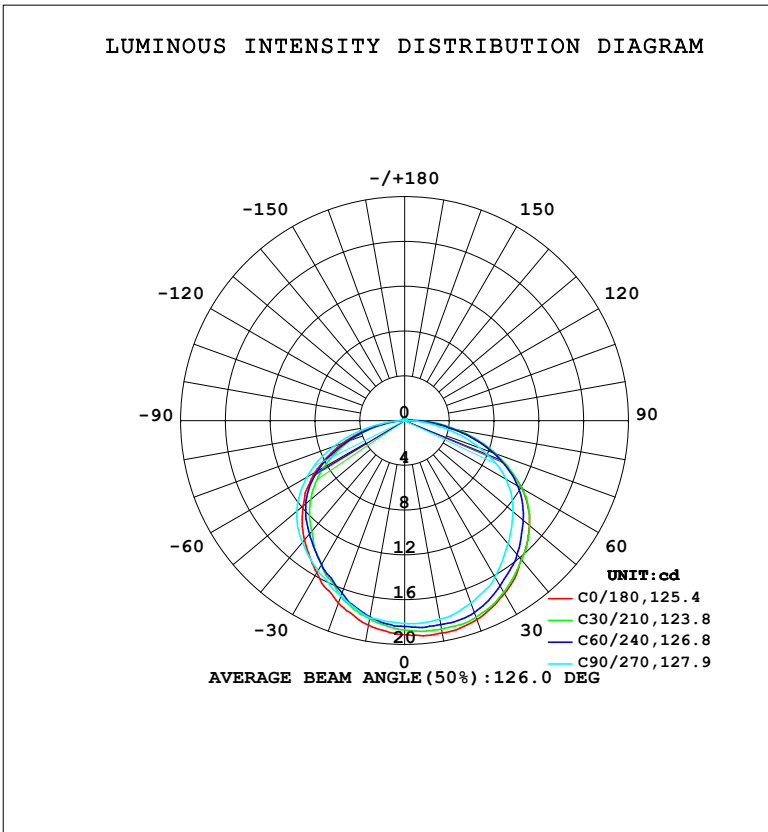


**LUMINAIRE PHOTOMETRIC TEST REPORT**

NAME: LED Strip	TYPE: Indoor lighting	WEIGHT: 75g
SPEC.: LED	DIM.: 500*12*1.2MM	SERIAL No.: 20240402005
MFR.: EVERFINE	SUR.: 500*12MM	Shielding Angle:

DATA OF LAMP		PHOTOMETRIC DATA			
WW-FLSMOBE52FW120B-24 (WCP) -HR-EP R		Imax (cd)	19.29	S/MH (C0/180)	1.23
NOMINAL POWER (W)	2.02728	LOR (%)	100.0	S/MH (C90/270)	1.28
RATED VOLTAGE (V)	DC 24V	TOTAL FLUX (lm)	62.523	η UP, DN (C0-180)	1.0,49.4
NOMINAL FLUX (lm)	62.523	CIE CLASS	DIRECT	η UP, DN (C180-360)	1.1,48.5
LAMPS INSIDE	1	η up (%)	2.1	CIBSE SHR NOM	1.25
TEST VOLTAGE (V)	DC 24V	η down (%)	97.9	CIBSE SHR MAX	1.35



C Range: 0 - 360DEG  
 C Interval: 15.0DEG  
 Test Speed: HIGH  
 Temperature: 25.3°C  
 Operators: DAMIN  
 Test Date: 2024-04-10

γ Range: 0 - 180DEG  
 γ Interval: 1.0DEG  
 Test System: EVERFINE GO-2000B\_V1 SYSTEM V2.00.471  
 Humidity: 65.0%  
 Test Distance: 4.880m [K=1.0000]  
 Remarks:

ZONAL FLUX DIAGRAM

ZONAL FLUX DIAGRAM:

$\gamma$	C0	C45	C90	C135	C180	C225	C270	C315	$\gamma$	$\Phi$ zone	$\Phi$ total	%lum,lamp
10	19.26	18.74	18.00	17.64	18.57	17.91	17.87	18.29	0- 10	1.753	1.753	2.8,2.8
20	18.91	18.50	17.33	16.47	17.33	16.39	16.66	18.05	10- 20	5.062	6.815	10.9,10.9
30	17.83	17.45	16.16	15.01	15.70	14.67	15.49	17.12	20- 30	7.767	14.58	23.3,23.3
40	16.22	15.94	14.36	13.03	13.93	12.97	14.21	15.76	30- 40	9.635	24.22	38.7,38.7
50	14.57	14.35	12.63	10.80	11.83	11.04	12.59	14.27	40- 50	10.58	34.79	55.6,55.6
60	12.11	12.08	10.46	8.053	9.239	8.494	10.07	12.19	50- 60	10.38	45.18	72.3,72.3
70	8.480	8.737	7.143	4.712	5.877	5.221	6.748	8.739	60- 70	8.581	53.76	86,86
80	4.452	4.821	3.331	1.976	2.270	1.970	2.932	5.215	70- 80	5.425	59.18	94.7,94.7
90	0.8337	1.275	0.4768	0.2744	0.2488	0.1878	0.1058	1.612	80- 90	2.032	61.22	97.9,97.9
100	0.1515	0.2826	0.0966	0.1688	0.2118	0.1967	0.0943	0.5581	90-100	0.4304	61.65	98.6,98.6
110	0.1071	0.1245	0.1024	0.1525	0.1874	0.1874	0.1164	0.1305	100-110	0.1873	61.83	98.9,98.9
120	0.1199	0.1257	0.1211	0.1537	0.1781	0.1665	0.1397	0.1211	110-120	0.1385	61.97	99.1,99.1
130	0.1385	0.1397	0.1397	0.1723	0.1781	0.1653	0.1618	0.1408	120-130	0.1322	62.10	99.3,99.3
140	0.1559	0.1630	0.1606	0.1898	0.1921	0.1804	0.1828	0.1583	130-140	0.1270	62.23	99.5,99.5
150	0.1769	0.1874	0.1804	0.2072	0.2096	0.1979	0.2026	0.1793	140-150	0.1154	62.35	99.7,99.7
160	0.1979	0.2072	0.2002	0.2235	0.2258	0.2153	0.2177	0.1990	150-160	0.0935	62.44	99.9,99.9
170	0.2188	0.2270	0.2176	0.2363	0.2340	0.2200	0.2305	0.2165	160-170	0.0618	62.50	100,100
180	0.2328	0.2375	0.2340	0.2363	0.2340	0.2340	0.2340	0.2351	170-180	0.0218	62.52	100,100
DEG	LUMINOUS INTENSITY:cd									UNIT:lm		

Conical surface Flux(90deg): 29.449 lm

%lum = 47.1%

%lamp = 47.1%

Conical surface Flux(120deg): 45.177 lm

%lum = 72.3%

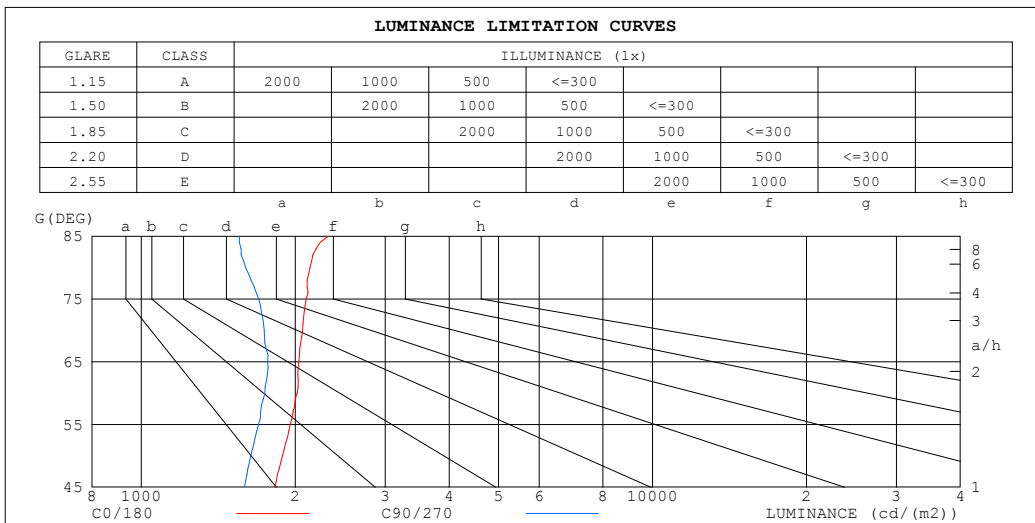
%lamp = 72.3%

C Range: 0 - 360DEG  
 C Interval: 15.0DEG  
 Test Speed: HIGH  
 Temperature:25.3°C  
 Operators:DAMIN  
 Test Date:2024-04-10

$\gamma$  Range: 0 - 180DEG  
 $\gamma$  Interval: 1.0DEG  
 Test System:EVERFINE GO-2000B\_V1 SYSTEM V2.00.471  
 Humidity:65.0%  
 Test Distance:4.880m [K=1.0000]  
 Remarks:

**LUMINANCE LIMITATION CURVES**

<b>NAME:</b> LED Strip	<b>TYPE:</b> Indoor lighting	<b>WEIGHT:</b> 75g
<b>SPEC.:</b> LED	<b>DIM.:</b> 500*12*1.2MM	<b>SERIAL No.:</b> 20240402005
<b>MFR.:</b> EVERFINE	<b>SUR.:</b> 500*12MM	<b>Shielding Angle:</b>



LUMINANCE cd/ (m2)		
G (DEG)	C0/180	C90/270
85	2319	1557
80	2137	1598
75	2100	1697
70	2066	1740
65	2032	1767
60	2018	1744
55	1956	1694
50	1889	1638
45	1823	1591

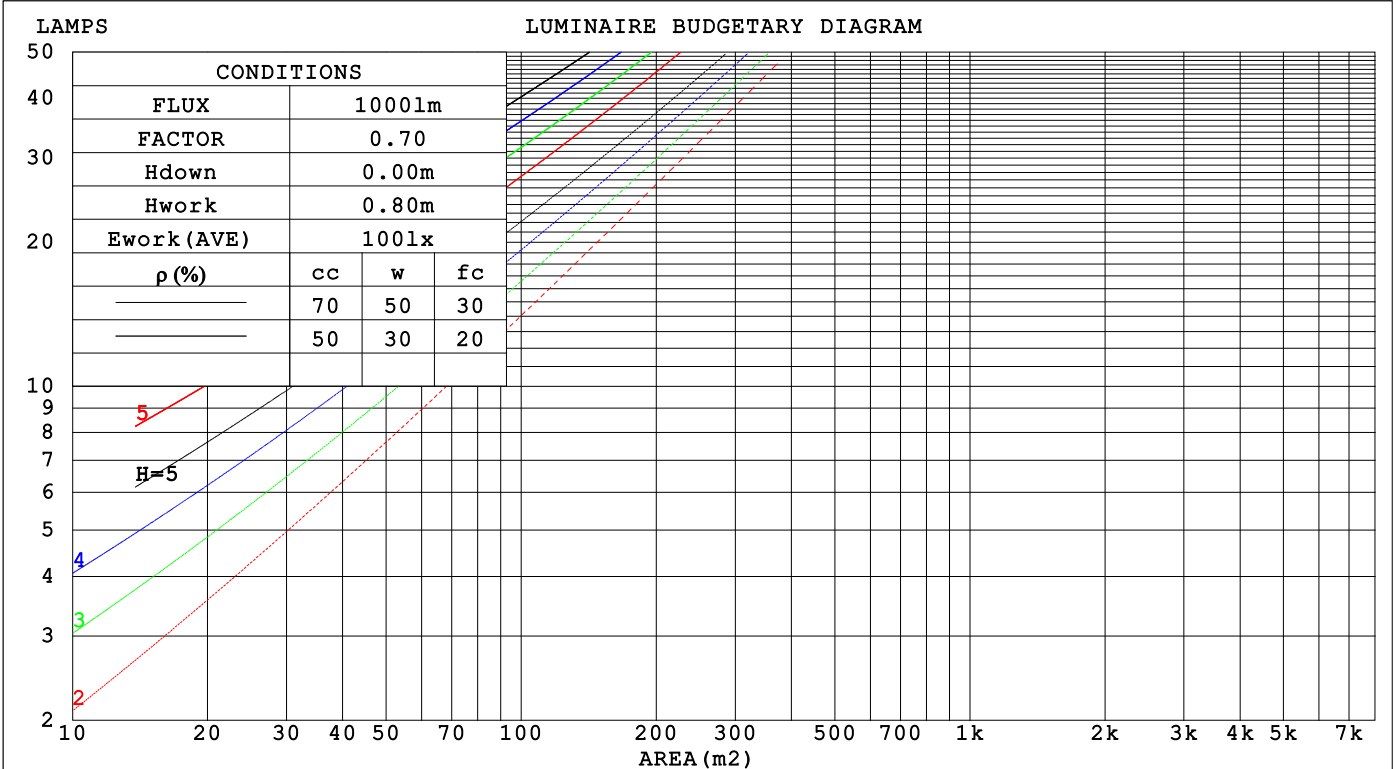
C Range: 0 - 360DEG  
 C Interval: 15.0DEG  
 Test Speed: HIGH  
 Temperature: 25.3°C  
 Operators: DAMIN  
 Test Date: 2024-04-10

γ Range: 0 - 180DEG  
 γ Interval: 1.0DEG  
 Test System: EVERFINE GO-2000B\_V1 SYSTEM V2.00.471  
 Humidity: 65.0%  
 Test Distance: 4.880m [K=1.0000]  
 Remarks:

**CU AND LUMINAIRE BUDGETARY ESTIMATE DIAGRAM**

NAME: LED Strip	TYPE: Indoor lighting	WEIGHT: 75g
SPEC.: LED	DIM.: 500*12*1.2MM	SERIAL No.: 20240402005
MFR.: EVERFINE	SUR.: 500*12MM	Shielding Angle:

pcc	80%			70%			50%			30%			10%			0
	50%	30%	10%	50%	30%	10%	50%	30%	10%	50%	30%	10%	50%	30%	10%	0
p <sub>w</sub>	0															
p <sub>fc</sub>	0															
RCR	RCR:Room Cavity Ratio      Coefficients of Utilization(CU)															
0.0	1.19	1.19	1.19	1.16	1.16	1.16	1.10	1.10	1.10	1.05	1.05	1.05	1.00	1.00	1.00	.98
1.0	1.02	.97	.93	.99	.95	.91	.95	.91	.88	.90	.87	.85	.86	.84	.82	.80
2.0	.88	.80	.74	.86	.79	.73	.82	.76	.71	.78	.73	.69	.75	.71	.67	.65
3.0	.76	.68	.61	.75	.67	.60	.71	.64	.59	.68	.62	.57	.65	.60	.56	.54
4.0	.67	.58	.51	.66	.57	.50	.63	.55	.49	.60	.54	.49	.58	.52	.48	.45
5.0	.60	.50	.43	.59	.50	.43	.56	.48	.42	.54	.47	.42	.52	.46	.41	.39
6.0	.54	.44	.38	.52	.44	.37	.50	.43	.37	.49	.42	.36	.47	.41	.36	.34
7.0	.48	.39	.33	.47	.39	.33	.46	.38	.32	.44	.37	.32	.42	.36	.32	.29
8.0	.44	.35	.29	.43	.35	.29	.42	.34	.29	.40	.33	.28	.39	.33	.28	.26
9.0	.40	.32	.26	.40	.32	.26	.38	.31	.26	.37	.30	.26	.36	.30	.25	.23
10.0	.37	.29	.24	.37	.29	.23	.35	.28	.23	.34	.28	.23	.33	.27	.23	.21



C Range: 0 - 360DEG  
 C Interval: 15.0DEG  
 Test Speed: HIGH  
 Temperature: 25.3°C  
 Operators: DAMIN  
 Test Date: 2024-04-10

γ Range: 0 - 180DEG  
 γ Interval: 1.0DEG  
 Test System: EVERFINE GO-2000B\_V1 SYSTEM V2.00.471  
 Humidity: 65.0%  
 Test Distance: 4.880m [K=1.0000]  
 Remarks:

WEC AND CCEC

NAME: LED Strip	TYPE: Indoor lighting	WEIGHT: 75g
SPEC.: LED	DIM.: 500*12*1.2MM	SERIAL No.: 20240402005
MFR.: EVERFINE	SUR.: 500*12MM	Shielding Angle:

$\rho_{CC}$	80%			70%			50%			30%			10%			0
$\rho_w$	50%	30%	10%	50%	30%	10%	50%	30%	10%	50%	30%	10%	50%	30%	10%	0
$\rho_{fc}$	20%			20%			20%			20%			20%			0
RCR	RCR:Room Cavity Ratio						Wall Exitance Coefficients(WEC)									
0.0																
1.0	.339	.193	.061	.331	.189	.060	.316	.182	.058	.303	.175	.056	.291	.169	.054	
2.0	.312	.171	.052	.305	.168	.052	.292	.163	.050	.280	.157	.049	.269	.152	.048	
3.0	.285	.152	.045	.279	.150	.045	.268	.145	.044	.257	.141	.043	.247	.137	.042	
4.0	.261	.136	.040	.256	.134	.040	.245	.130	.039	.236	.127	.038	.227	.123	.038	
5.0	.240	.122	.035	.235	.121	.035	.226	.118	.035	.217	.115	.034	.209	.112	.034	
6.0	.221	.111	.032	.217	.110	.032	.209	.107	.031	.201	.104	.031	.194	.102	.030	
7.0	.205	.101	.029	.201	.100	.029	.194	.098	.028	.187	.096	.028	.180	.094	.028	
8.0	.191	.093	.026	.187	.092	.026	.181	.090	.026	.175	.088	.025	.169	.087	.025	
9.0	.178	.086	.024	.175	.085	.024	.169	.084	.024	.164	.082	.023	.158	.080	.023	
10.0	.167	.080	.022	.164	.079	.022	.159	.078	.022	.154	.076	.022	.149	.075	.022	

$\rho_{CC}$	80%			70%			50%			30%			10%			0
$\rho_w$	50%	30%	10%	50%	30%	10%	50%	30%	10%	50%	30%	10%	50%	30%	10%	0
$\rho_{fc}$	20%			20%			20%			20%			20%			0
RCR	RCR:Room Cavity Ratio						Ceiling Cavity Exitance Coefficients(CCEC)									
0.0	.206	.206	.206	.176	.176	.176	.120	.120	.120	.069	.069	.069	.022	.022	.022	
1.0	.198	.172	.148	.170	.148	.127	.116	.102	.088	.067	.059	.051	.021	.019	.017	
2.0	.191	.148	.112	.164	.127	.097	.112	.088	.067	.065	.051	.039	.021	.017	.013	
3.0	.184	.131	.088	.158	.113	.077	.108	.078	.054	.062	.046	.032	.020	.015	.010	
4.0	.176	.118	.073	.151	.102	.063	.104	.071	.045	.060	.041	.026	.019	.014	.009	
5.0	.169	.107	.062	.145	.093	.054	.100	.065	.038	.058	.038	.023	.019	.012	.007	
6.0	.161	.099	.054	.139	.086	.047	.096	.060	.034	.055	.035	.020	.018	.012	.007	
7.0	.154	.092	.049	.133	.080	.043	.092	.056	.030	.053	.033	.018	.017	.011	.006	
8.0	.148	.087	.045	.127	.075	.039	.088	.053	.028	.051	.031	.016	.017	.010	.005	
9.0	.141	.082	.041	.122	.071	.036	.084	.050	.026	.049	.029	.015	.016	.010	.005	
10.0	.135	.077	.039	.117	.067	.034	.081	.047	.024	.047	.028	.014	.015	.009	.005	

C Range: 0 - 360DEG  
 C Interval: 15.0DEG  
 Test Speed: HIGH  
 Temperature:25.3°C  
 Operators:DAMIN  
 Test Date:2024-04-10

$\gamma$  Range: 0 - 180DEG  
 $\gamma$  Interval: 1.0DEG  
 Test System:EVERFINE GO-2000B\_V1 SYSTEM V2.00.471  
 Humidity:65.0%  
 Test Distance:4.880m [K=1.0000]  
 Remarks:

**UGR(Unified Glare Rating) Table**

NAME: LED Strip		TYPE: Indoor lighting					WEIGHT: 75g				
SPEC.: LED		DIM.: 500*12*1.2MM					SERIAL No.: 20240402005				
MFR.: EVERFINE		SUR.: 500*12MM					Shielding Angle:				
ceiling/cavity		0.7	0.7	0.5	0.5	0.3	0.7	0.7	0.5	0.5	0.3
walls		0.5	0.3	0.5	0.3	0.3	0.5	0.3	0.5	0.3	0.3
working plane		0.2	0.2	0.2	0.2	0.2	0.2	0.2	0.2	0.2	0.2
Room dimensions		Viewed crosswise					Viewed endwise				
x = 2H y = 2H		25.5	27.0	25.8	27.3	27.5	24.9	26.5	25.2	26.7	27.0
	3H	27.5	28.9	27.8	29.2	29.5	26.8	28.3	27.1	28.5	28.8
	4H	28.4	29.7	28.7	30.0	30.3	27.6	29.0	27.9	29.3	29.6
	6H	29.1	30.4	29.5	30.7	31.0	28.2	29.5	28.5	29.8	30.1
	8H	29.4	30.6	29.7	31.0	31.3	28.4	29.6	28.8	30.0	30.3
	12H	29.6	30.8	30.0	31.2	31.5	28.5	29.7	28.9	30.1	30.4
	4H	26.2	27.6	26.6	27.9	28.2	25.8	27.2	26.2	27.5	27.8
	3H	28.4	29.6	28.8	30.0	30.3	27.9	29.1	28.3	29.5	29.8
	4H	29.4	30.5	29.9	30.9	31.3	28.8	30.0	29.3	30.3	30.7
	6H	30.3	31.3	30.8	31.7	32.1	29.6	30.6	30.0	31.0	31.4
	8H	30.7	31.6	31.2	32.0	32.5	29.9	30.8	30.3	31.2	31.6
	12H	31.0	31.9	31.5	32.3	32.8	30.1	30.9	30.5	31.3	31.8
	8H	29.8	30.8	30.3	31.2	31.6	29.3	30.3	29.8	30.7	31.1
	6H	31.0	31.7	31.4	32.2	32.6	30.3	31.1	30.8	31.5	32.0
	8H	31.5	32.2	32.0	32.6	33.1	30.7	31.4	31.2	31.9	32.4
	12H	31.9	32.5	32.5	33.0	33.5	31.0	31.6	31.6	32.1	32.6
	12H	29.9	30.7	30.3	31.2	31.6	29.4	30.3	29.9	30.7	31.1
	6H	31.1	31.8	31.6	32.2	32.7	30.5	31.2	31.0	31.6	32.1
	8H	31.7	32.3	32.2	32.7	33.3	31.0	31.5	31.5	32.0	32.6
Variations with the observer position at spacings(CIE Pub.117):											
S = 1.0H		+ 0.1 / - 0.2					+ 0.1 / - 0.2				
1.5H		+ 0.2 / - 0.3					+ 0.2 / - 0.3				
2.0H		+ 0.2 / - 0.4					+ 0.2 / - 0.5				

CIE Pub.117, 62.52 lm Total Lamp Luminous Flux Correct (8log(F/F0) = -9.6)  
 Area: 0.012 m2

C Range: 0 - 360DEG  
 C Interval: 15.0DEG  
 Test Speed: HIGH  
 Temperature:25.3°C  
 Operators:DAMIN  
 Test Date:2024-04-10

γ Range: 0 - 180DEG  
 γ Interval: 1.0DEG  
 Test System:EVERFINE GO-2000B\_V1 SYSTEM V2.00.471  
 Humidity:65.0%  
 Test Distance:4.880m [K=1.0000]  
 Remarks:

**UTILIZATION FACTORS TABLE**

NAME: LED Strip	TYPE: Indoor lighting	WEIGHT: 75g
SPEC.: LED	DIM.: 500*12*1.2MM	SERIAL No.: 20240402005
MFR.: EVERFINE	SUR.: 500*12MM	Shielding Angle:

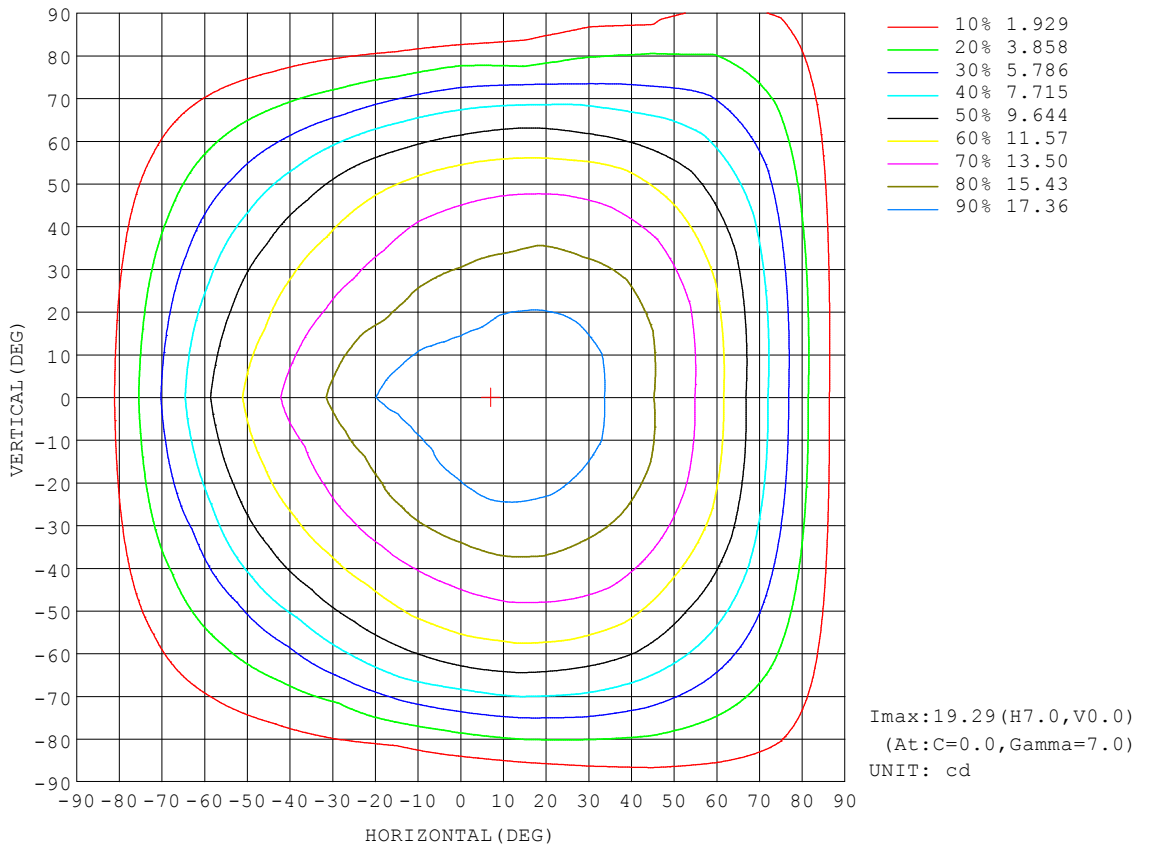
REFLECTANCE										
Ceiling	0.8	0.8	0.8	0.7	0.7	0.7	0.5	0.5	0.5	0
Walls	0.7	0.5	0.3	0.7	0.5	0.3	0.7	0.5	0.3	0
Working plane	0.2	0.2	0.2	0.2	0.2	0.2	0.2	0.2	0.2	0
ROOM INDEX	UTILIZATION FACTORS (PERCENT) $k(RI) \times RCR = 5$									
$k = 0.60$	54	42	35	53	42	35	52	41	34	28
0.80	64	52	44	63	51	44	61	50	43	36
1.00	72	61	53	71	60	52	69	61	52	44
1.25	80	68	61	78	68	60	75	66	59	51
1.50	85	74	66	83	73	66	80	71	65	56
2.00	92	83	76	90	81	75	86	79	73	64
2.50	96	88	81	94	86	80	90	83	78	69
3.00	100	92	86	97	91	85	93	87	83	73
4.00	104	98	93	102	96	91	97	92	88	78
5.00	107	101	97	104	99	95	99	95	92	82
ROOM INDEX	UF(total)									Direct
According to DIN EN 13032-2 2004			Suspended				SHRNOM = 1.25			

C Range: 0 - 360DEG  
 C Interval: 15.0DEG  
 Test Speed: HIGH  
 Temperature: 25.3°C  
 Operators: DAMIN  
 Test Date: 2024-04-10

$\gamma$  Range: 0 - 180DEG  
 $\gamma$  Interval: 1.0DEG  
 Test System: EVERFINE GO-2000B\_V1 SYSTEM V2.00.471  
 Humidity: 65.0%  
 Test Distance: 4.880m [K=1.0000]  
 Remarks:

**ISOCANDELA DIAGRAM**

NAME: LED Strip	TYPE: Indoor lighting	WEIGHT: 75g
SPEC.: LED	DIM.: 500*12*1.2MM	SERIAL No.: 20240402005
MFR.: EVERFINE	SUR.: 500*12MM	Shielding Angle:



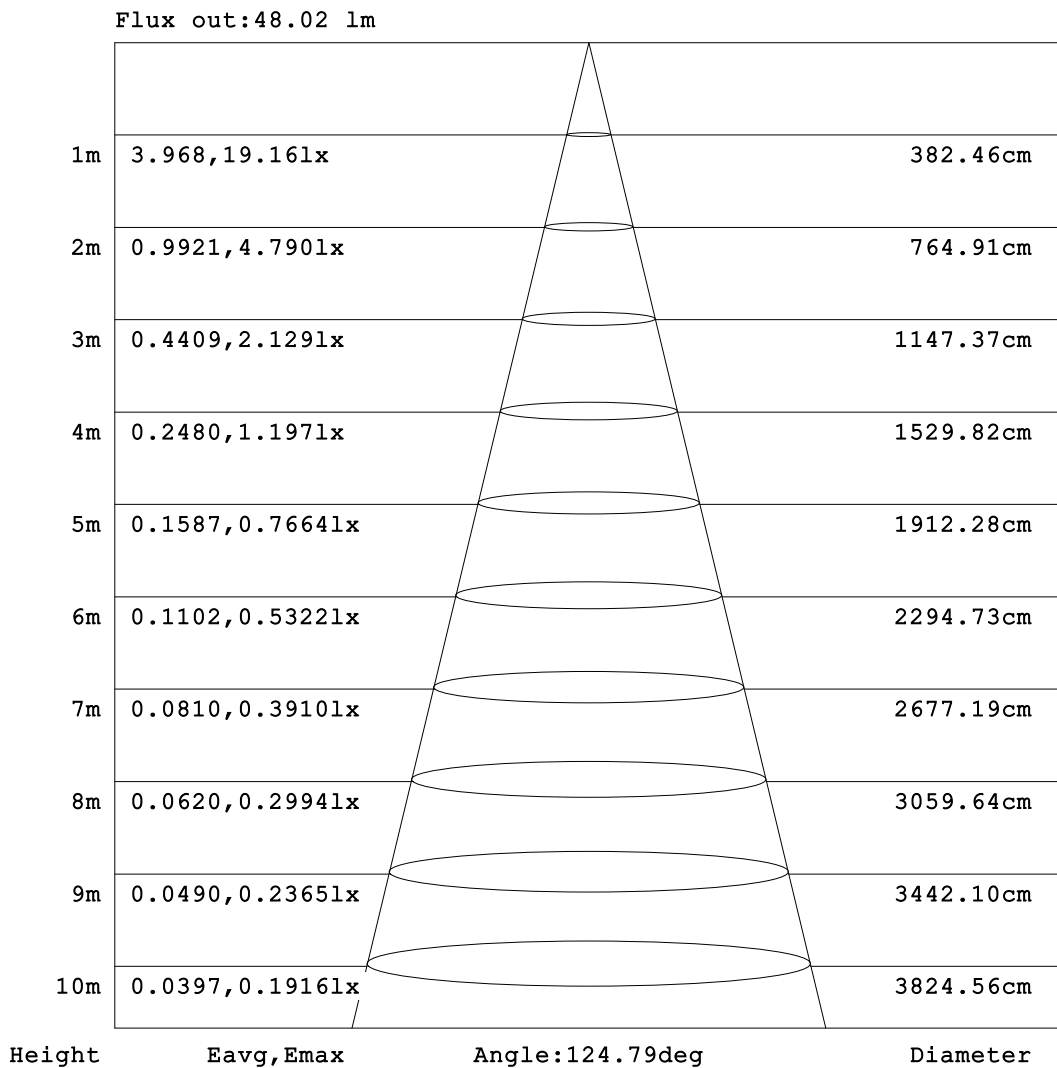
C Range: 0 - 360DEG  
 C Interval: 15.0DEG  
 Test Speed: HIGH  
 Temperature:25.3°C  
 Operators:DAMIN  
 Test Date:2024-04-10

γ Range: 0 - 180DEG  
 γ Interval: 1.0DEG  
 Test System:EVERFINE GO-2000B\_V1 SYSTEM V2.00.471  
 Humidity:65.0%  
 Test Distance:4.880m [K=1.0000]  
 Remarks:



**AAI Figure**

NAME: LED Strip	TYPE: Indoor lighting	WEIGHT: 75g
SPEC.: LED	DIM.: 500*12*1.2MM	SERIAL No.: 20240402005
MFR.: EVERFINE	SUR.: 500*12MM	Shielding Angle:



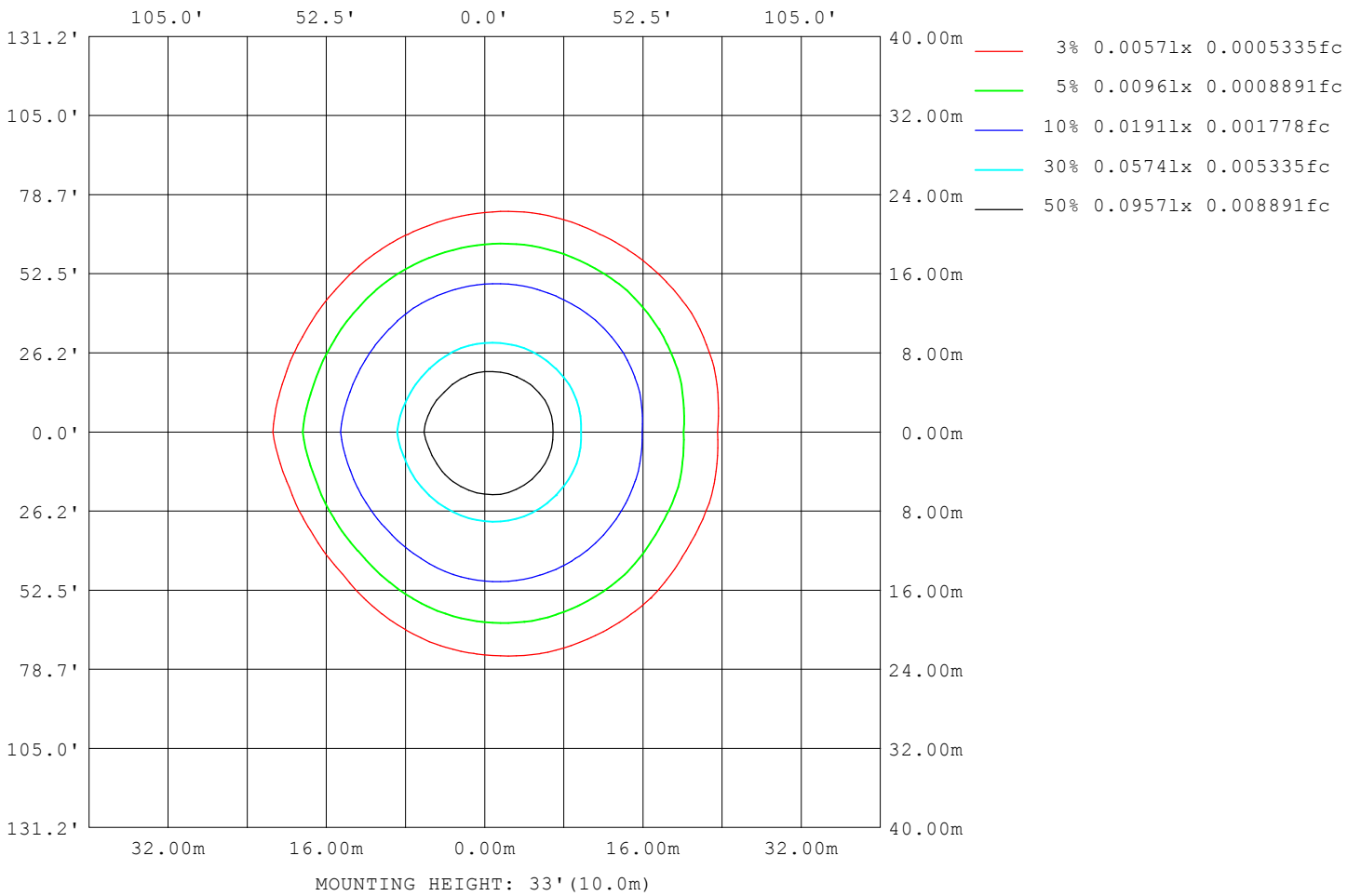
Note:The Curves indicate the illuminated area and the average illumination when the luminaire is at different distance.

C Range: 0 - 360DEG  
 C Interval: 15.0DEG  
 Test Speed: HIGH  
 Temperature:25.3°C  
 Operators:DAMIN  
 Test Date:2024-04-10

γ Range: 0 - 180DEG  
 γ Interval: 1.0DEG  
 Test System:EVERFINE GO-2000B\_V1 SYSTEM V2.00.471  
 Humidity:65.0%  
 Test Distance:4.880m [K=1.0000]  
 Remarks:

**ISOLUX DIAGRAM**

NAME: LED Strip	TYPE: Indoor lighting	WEIGHT: 75g
SPEC.: LED	DIM.: 500*12*1.2MM	SERIAL No.: 20240402005
MFR.: EVERFINE	SUR.: 500*12MM	Shielding Angle:



C Range: 0 - 360DEG  
 C Interval: 15.0DEG  
 Test Speed: HIGH  
 Temperature: 25.3°C  
 Operators: DAMIN  
 Test Date: 2024-04-10

γ Range: 0 - 180DEG  
 γ Interval: 1.0DEG  
 Test System: EVERFINE GO-2000B\_V1 SYSTEM V2.00.471  
 Humidity: 65.0%  
 Test Distance: 4.880m [K=1.0000]  
 Remarks:

LED Avg.L Report

NAME: LED Strip	TYPE: Indoor lighting	WEIGHT: 75g
SPEC.: LED	DIM.: 500*12*1.2MM	SERIAL No.: 20240402005
MFR.: EVERFINE	SUR.: 500*12MM	Shielding Angle:

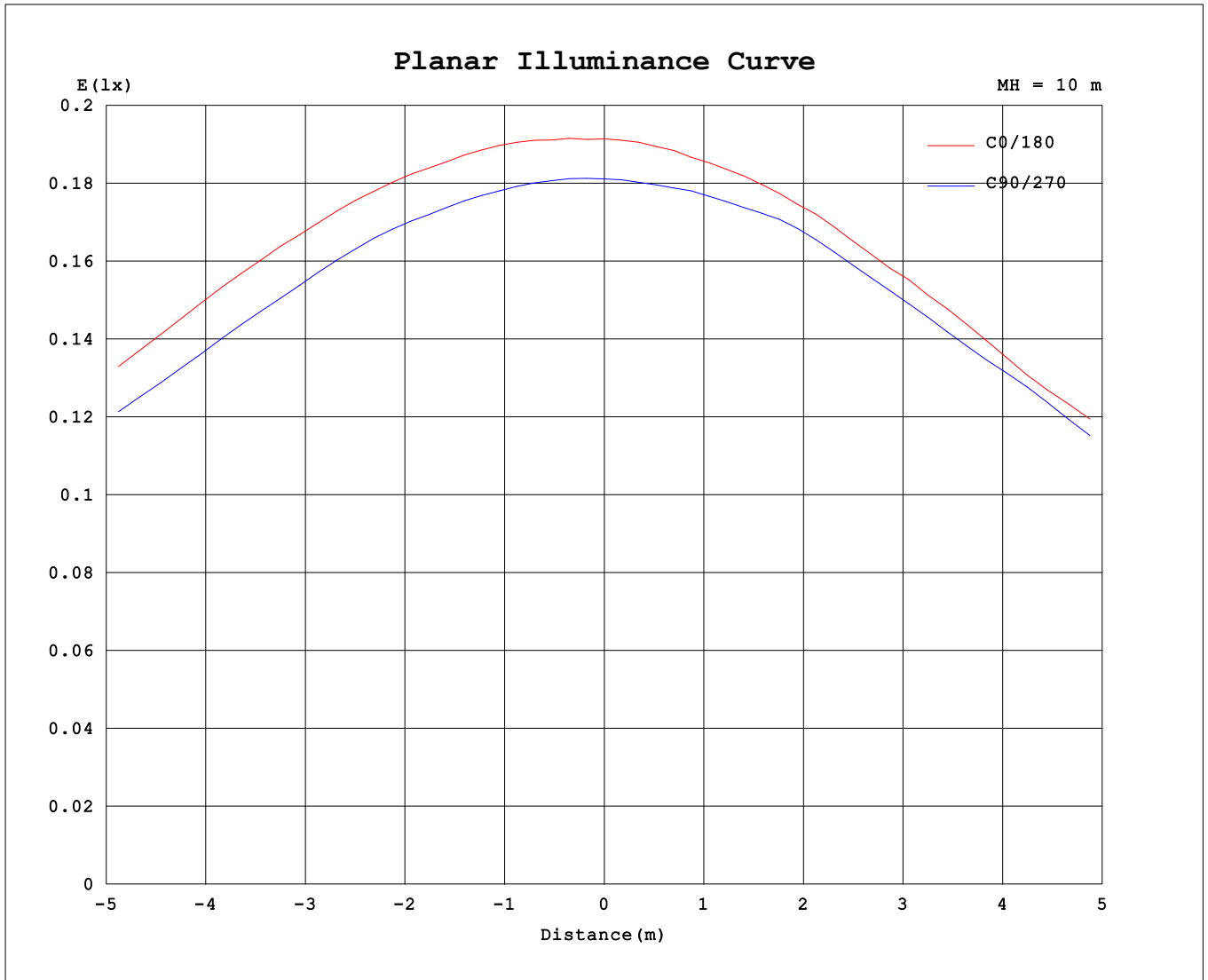
AvgL	cd/m2
L_0~180 (65) av	1759
L_0~180 (75) av	1697
L_0~180 (85) av	1592
L_90~270 (65) av	1723
L_90~270 (75) av	1631
L_90~270 (85) av	1328
L_45 (65) av	1688
L_45 (75) av	1660
L_45 (85) av	1803

Standard: GB/T 29293-2012

C Range: 0 - 360DEG  
 C Interval: 15.0DEG  
 Test Speed: HIGH  
 Temperature:25.3°C  
 Operators:DAMIN  
 Test Date:2024-04-10

γ Range: 0 - 180DEG  
 γ Interval: 1.0DEG  
 Test System:EVERFINE GO-2000B\_V1 SYSTEM V2.00.471  
 Humidity:65.0%  
 Test Distance:4.880m [K=1.0000]  
 Remarks:

**Planar Illuminance Curve**



C Range: 0 - 360DEG  
 C Interval: 15.0DEG  
 Test Speed: HIGH  
 Temperature: 25.3°C  
 Operators: DAMIN  
 Test Date: 2024-04-10

γ Range: 0 - 180DEG  
 γ Interval: 1.0DEG  
 Test System: EVERFINE GO-2000B\_V1 SYSTEM V2.00.471  
 Humidity: 65.0%  
 Test Distance: 4.880m [K=1.0000]  
 Remarks:

LUMINOUS DISTRIBUTION INTENSITY DATA

NAME: LED Strip	TYPE: Indoor lighting	WEIGHT: 75g
SPEC.: LED	DIM.: 500*12*1.2MM	SERIAL No.: 20240402005
MFR.: EVERFINE	SUR.: 500*12MM	Shielding Angle:

Table--1

UNIT: cd

C (DEG) \ γ (DEG)	0	15	30	45	60	75	90	105	120	135	150	165	180	195	210	225	240	255	270
0	19.1	18.9	18.7	18.5	18.4	18.3	18.1	18.1	18.1	18.2	18.3	18.7	19.1	18.9	18.7	18.5	18.4	18.3	18.1
5	19.3	19.1	18.9	18.7	18.5	18.4	18.1	18.0	17.9	18.0	18.1	18.4	18.9	18.6	18.4	18.3	18.2	18.1	18.0
10	19.3	19.2	18.9	18.7	18.5	18.3	18.0	17.9	17.7	17.6	17.7	18.0	18.6	18.2	18.0	17.9	17.8	17.7	17.9
15	19.2	19.1	18.9	18.8	18.5	18.1	17.8	17.5	17.2	17.1	17.2	17.4	18.0	17.6	17.5	17.3	17.2	17.2	17.3
20	18.9	18.9	18.7	18.5	18.2	17.8	17.3	17.0	16.6	16.5	16.5	16.7	17.3	16.9	16.7	16.4	16.4	16.5	16.7
25	18.4	18.5	18.3	18.0	17.7	17.3	16.8	16.4	16.0	15.7	15.6	16.0	16.6	16.1	15.7	15.5	15.5	15.8	16.0
30	17.8	17.9	17.7	17.4	17.0	16.8	16.2	15.7	15.2	15.0	14.8	15.0	15.7	15.2	14.9	14.7	14.9	15.2	15.5
35	17.2	17.3	17.0	16.8	16.3	16.0	15.3	14.7	14.3	14.1	14.0	14.1	14.8	14.3	14.0	13.8	14.0	14.5	14.9
40	16.2	16.5	16.2	15.9	15.6	15.1	14.4	13.8	13.3	13.0	13.0	13.1	13.9	13.3	12.9	13.0	13.2	13.8	14.2
45	15.5	15.7	15.5	15.1	14.7	14.2	13.5	12.9	12.2	11.9	11.9	12.2	13.0	12.2	12.0	12.0	12.5	13.0	13.5
50	14.6	14.7	14.6	14.3	13.8	13.3	12.6	11.9	11.2	10.8	10.8	11.1	11.8	11.2	11.0	11.0	11.5	12.0	12.6
55	13.5	13.7	13.5	13.3	12.9	12.3	11.7	10.9	10.1	9.52	9.50	9.86	10.7	10.0	9.74	9.88	10.4	10.8	11.4
60	12.1	12.3	12.1	12.1	11.7	11.2	10.5	9.62	8.73	8.05	7.99	8.30	9.24	8.52	8.34	8.49	8.98	9.44	10.1
65	10.3	10.7	10.4	10.5	10.2	9.72	8.96	8.16	7.18	6.24	6.09	6.49	7.54	7.01	6.77	6.87	7.31	7.82	8.51
70	8.48	8.82	8.68	8.74	8.47	8.01	7.14	6.36	5.33	4.71	4.55	4.91	5.88	5.34	5.22	5.22	5.41	6.02	6.75
75	6.52	6.83	6.80	6.79	6.52	6.02	5.27	4.50	3.57	3.35	3.20	3.35	4.02	3.60	3.57	3.57	3.69	4.12	4.86
80	4.45	4.76	4.80	4.82	4.46	4.05	3.33	2.50	2.27	1.98	1.87	1.90	2.27	2.02	2.00	1.97	2.16	2.34	2.93
85	2.43	2.82	2.90	2.86	2.56	2.14	1.63	1.23	1.00	0.86	0.79	0.79	0.90	0.81	0.78	0.71	0.79	0.89	1.15
90	0.83	1.22	1.30	1.28	1.10	0.82	0.48	0.42	0.32	0.27	0.28	0.27	0.25	0.26	0.23	0.19	0.15	0.17	0.11
95	0.28	0.52	0.62	0.60	0.57	0.38	0.10	0.15	0.20	0.19	0.21	0.20	0.22	0.22	0.22	0.18	0.15	0.11	0.09
100	0.15	0.26	0.34	0.28	0.28	0.18	0.10	0.11	0.16	0.17	0.19	0.19	0.21	0.22	0.22	0.20	0.15	0.10	0.09
105	0.11	0.14	0.20	0.18	0.17	0.10	0.10	0.11	0.14	0.16	0.18	0.18	0.20	0.22	0.21	0.20	0.15	0.10	0.10
110	0.11	0.11	0.13	0.12	0.13	0.11	0.10	0.12	0.13	0.15	0.18	0.18	0.19	0.21	0.20	0.19	0.15	0.11	0.12
115	0.11	0.11	0.11	0.12	0.12	0.12	0.11	0.13	0.13	0.15	0.18	0.18	0.18	0.20	0.18	0.17	0.15	0.12	0.13
120	0.12	0.12	0.11	0.13	0.12	0.13	0.12	0.14	0.13	0.15	0.17	0.18	0.18	0.19	0.17	0.17	0.15	0.14	0.14
125	0.13	0.13	0.12	0.13	0.12	0.14	0.13	0.15	0.14	0.16	0.17	0.18	0.18	0.18	0.17	0.17	0.16	0.15	0.15
130	0.14	0.14	0.13	0.14	0.13	0.15	0.14	0.16	0.15	0.17	0.17	0.18	0.18	0.18	0.18	0.17	0.17	0.16	0.16
135	0.15	0.16	0.14	0.15	0.14	0.16	0.15	0.17	0.16	0.18	0.18	0.19	0.18	0.18	0.19	0.18	0.18	0.17	0.17
140	0.16	0.17	0.15	0.16	0.16	0.17	0.16	0.18	0.18	0.19	0.19	0.19	0.19	0.18	0.19	0.18	0.19	0.18	0.18
145	0.17	0.18	0.16	0.17	0.16	0.18	0.18	0.19	0.18	0.20	0.20	0.20	0.20	0.20	0.20	0.19	0.20	0.19	0.19
150	0.18	0.19	0.18	0.19	0.18	0.19	0.18	0.20	0.19	0.21	0.20	0.21	0.21	0.20	0.21	0.20	0.21	0.20	0.20
155	0.19	0.20	0.19	0.20	0.18	0.20	0.20	0.21	0.20	0.22	0.21	0.22	0.22	0.21	0.22	0.20	0.22	0.20	0.21
160	0.20	0.21	0.20	0.21	0.20	0.21	0.20	0.22	0.21	0.22	0.22	0.22	0.23	0.22	0.22	0.22	0.22	0.21	0.22
165	0.22	0.22	0.21	0.22	0.20	0.22	0.22	0.23	0.22	0.23	0.22	0.23	0.23	0.22	0.23	0.22	0.23	0.22	0.23
170	0.22	0.23	0.21	0.23	0.22	0.23	0.22	0.23	0.22	0.24	0.22	0.24	0.23	0.22	0.23	0.22	0.23	0.22	0.23
175	0.23	0.23	0.22	0.23	0.22	0.23	0.22	0.24	0.23	0.24	0.23	0.24	0.23	0.23	0.24	0.23	0.24	0.23	0.23
180	0.23	0.24	0.23	0.24	0.23	0.23	0.23	0.24	0.23	0.24	0.24	0.24	0.23	0.24	0.24	0.23	0.24	0.23	0.23

C Range: 0 - 360DEG  
 C Interval: 15.0DEG  
 Test Speed: HIGH  
 Temperature: 25.3°C  
 Operators: DAMIN  
 Test Date: 2024-04-10

γ Range: 0 - 180DEG  
 γ Interval: 1.0DEG  
 Test System: EVERFINE GO-2000B\_V1 SYSTEM V2.00.471  
 Humidity: 65.0%  
 Test Distance: 4.880m [K=1.0000]  
 Remarks:

LUMINOUS DISTRIBUTION INTENSITY DATA

NAME: LED Strip	TYPE: Indoor lighting	WEIGHT: 75g
SPEC.: LED	DIM.: 500*12*1.2MM	SERIAL No.: 20240402005
MFR.: EVERFINE	SUR.: 500*12MM	Shielding Angle:

Table--2

UNIT: cd

C (DEG) γ (DEG)	285	300	315	330	345														
0	18.1	18.1	18.2	18.3	18.7														
5	18.0	18.2	18.3	18.5	19.0														
10	18.0	18.2	18.3	18.6	19.0														
15	17.6	18.0	18.3	18.6	19.0														
20	17.0	17.6	18.0	18.5	18.8														
25	16.6	17.1	17.6	18.2	18.4														
30	15.9	16.6	17.1	17.6	17.9														
35	15.3	15.8	16.5	17.0	17.3														
40	14.8	15.4	15.8	16.4	16.6														
45	14.0	14.6	15.0	15.7	15.8														
50	13.2	13.8	14.3	14.8	15.0														
55	12.1	12.7	13.3	13.8	13.8														
60	10.8	11.4	12.2	12.6	12.7														
65	9.27	9.80	10.6	11.0	11.0														
70	7.39	8.09	8.74	9.40	9.33														
75	5.19	5.99	6.92	7.67	7.51														
80	2.98	4.26	5.22	5.79	5.52														
85	1.67	2.47	3.12	3.89	3.54														
90	0.62	1.23	1.61	2.24	1.84														
95	0.22	0.51	0.69	1.33	0.94														
100	0.11	0.26	0.56	0.39	0.51														
105	0.10	0.10	0.26	0.43	0.27														
110	0.10	0.11	0.13	0.20	0.18														
115	0.11	0.12	0.12	0.13	0.12														
120	0.12	0.13	0.12	0.13	0.12														
125	0.14	0.14	0.13	0.14	0.13														
130	0.14	0.15	0.14	0.15	0.14														
135	0.16	0.16	0.15	0.16	0.15														
140	0.17	0.17	0.16	0.17	0.16														
145	0.18	0.19	0.18	0.18	0.18														
150	0.19	0.19	0.18	0.19	0.18														
155	0.20	0.20	0.20	0.20	0.19														
160	0.20	0.21	0.20	0.21	0.20														
165	0.22	0.22	0.21	0.22	0.22														
170	0.22	0.23	0.22	0.23	0.22														
175	0.23	0.23	0.22	0.23	0.23														
180	0.23	0.24	0.24	0.24	0.23														

C Range: 0 - 360DEG  
 C Interval: 15.0DEG  
 Test Speed: HIGH  
 Temperature:25.3°C  
 Operators:DAMIN  
 Test Date:2024-04-10

γ Range: 0 - 180DEG  
 γ Interval: 1.0DEG  
 Test System:EVERFINE GO-2000B\_V1 SYSTEM V2.00.471  
 Humidity:65.0%  
 Test Distance:4.880m [K=1.0000]  
 Remarks: