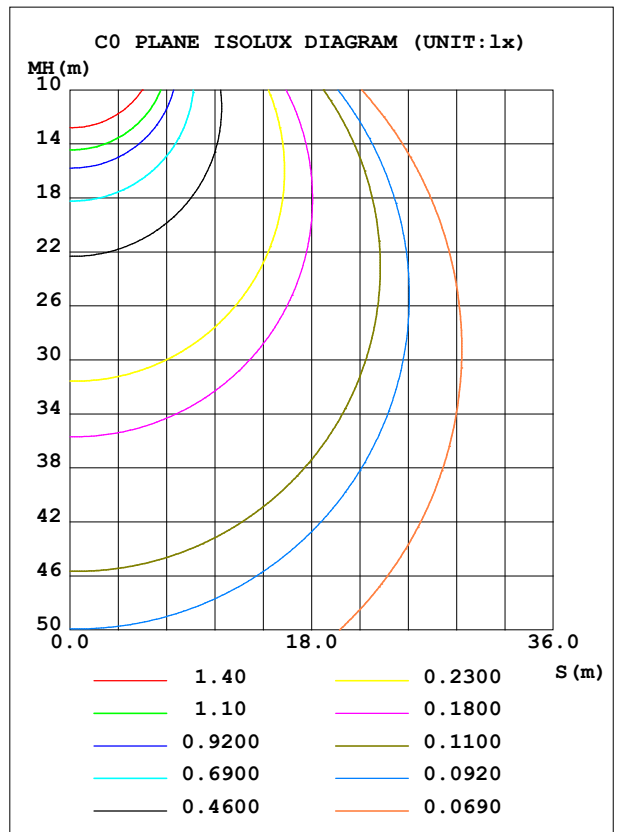
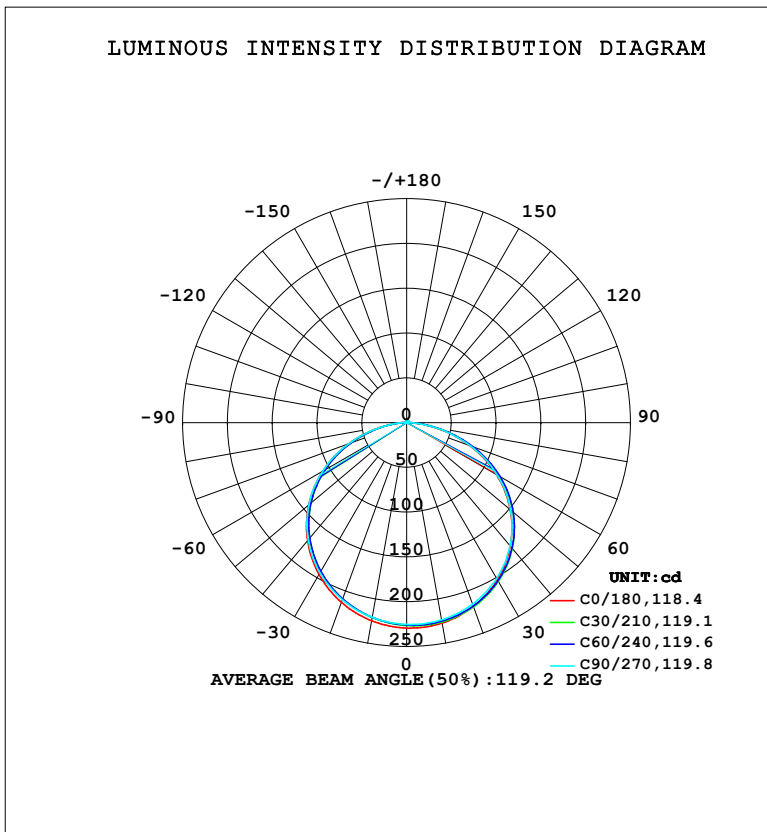


LUMINAIRE PHOTOMETRIC TEST REPORT

NAME: LED Strip	TYPE: Indoor lighting	WEIGHT: 20g
SPEC.: 2835 100LED	DIM.: 500*8*1.2MM	SERIAL No.: 20231114009
MFR.: EVERFINE	SUR.: 500*8MM	Shielding Angle:

DATA OF LAMP		PHOTOMETRIC DATA			
MODEL: 24 (WCP) -HR-HQ5-CV-HE-EP		Imax (cd)	229.4	S/MH (C0/180)	1.27
NOMINAL POWER (W)	4.3463	LOR (%)	100.0	S/MH (C90/270)	1.28
RATED VOLTAGE (V)	DC 24V	TOTAL FLUX (lm)	705.45	η UP, DN (C0-180)	0.7, 50.5
NOMINAL FLUX (lm)	705.454	CIE CLASS	DIRECT	η UP, DN (C180-360)	0.7, 48.1
LAMPS INSIDE	1	η up (%)	1.5	CIBSE SHR NOM	1.50
TEST VOLTAGE (V)	DC 24V	η down (%)	98.5	CIBSE SHR MAX	1.50



C Range: 0 - 360DEG
 C Interval: 15.0DEG
 Test Speed: HIGH
 Temperature: 25.3°C
 Operators: DAMIN
 Test Date: 2023-11-15

γ Range: 0 - 180DEG
 γ Interval: 1.0DEG
 Test System: EVERFINE GO-2000B_V1 SYSTEM V2.00.471
 Humidity: 65.0%
 Test Distance: 4.880m [K=1.0000]
 Remarks:

ZONAL FLUX DIAGRAM

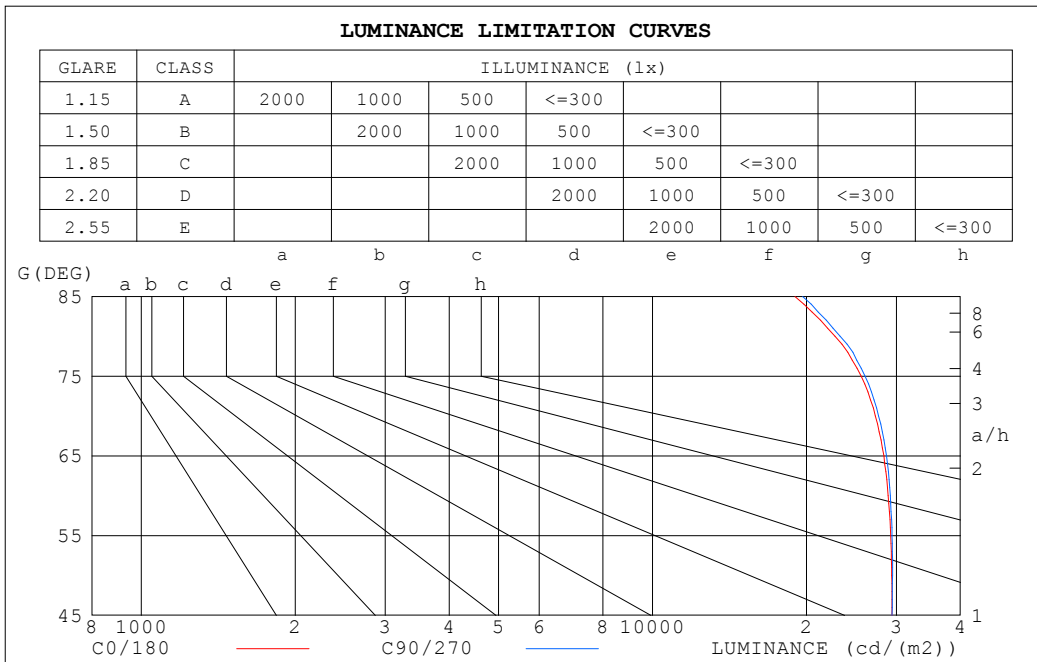
ZONAL FLUX DIAGRAM:

γ	C0	C45	C90	C135	C180	C225	C270	C315	γ	Φ zone	Φ total	%lum,lamp
10	227.3	225.6	223.6	222.8	224.7	220.3	220.8	223.8	0- 10	21.44	21.44	3.04,3.04
20	218.4	218.5	215.6	212.9	213.4	208.6	210.3	214.9	10- 20	61.88	83.32	11.8,11.8
30	202.6	204.9	201.0	196.8	195.8	191.0	193.6	199.6	20- 30	95.19	178.5	25.3,25.3
40	180.0	184.2	179.6	174.2	172.2	167.6	171.1	177.7	30- 40	117.3	295.8	41.9,41.9
50	151.0	156.3	151.5	145.3	142.8	138.6	142.6	149.2	40- 50	124.9	420.7	59.6,59.6
60	115.7	120.7	116.7	110.2	108.0	104.2	108.1	114.3	50- 60	116.2	536.9	76.1,76.1
70	74.68	79.05	75.74	70.18	68.26	65.33	68.29	72.05	60- 70	90.89	627.8	89,89
80	31.62	34.68	32.35	28.64	27.88	25.72	27.39	30.91	70- 80	52.68	680.5	96.5,96.5
90	2.341	3.161	1.951	1.979	1.822	1.835	1.345	2.546	80- 90	14.73	695.2	98.5,98.5
100	0.8114	0.7991	0.8086	0.8971	0.8715	0.9152	0.9071	0.8613	90-100	1.374	696.6	98.7,98.7
110	1.029	1.032	1.067	1.095	1.150	1.185	1.202	1.130	100-110	1.216	697.8	98.9,98.9
120	1.306	1.310	1.357	1.373	1.435	1.470	1.500	1.418	110-120	1.411	699.2	99.1,99.1
130	1.582	1.588	1.637	1.651	1.706	1.742	1.774	1.692	120-130	1.446	700.6	99.3,99.3
140	1.853	1.869	1.908	1.927	1.965	1.998	2.028	1.959	130-140	1.443	702.1	99.5,99.5
150	2.112	2.131	2.155	2.186	2.201	2.230	2.254	2.208	140-150	1.318	703.4	99.7,99.7
160	2.368	2.362	2.375	2.417	2.427	2.427	2.444	2.421	150-160	1.079	704.5	99.9,99.9
170	2.581	2.562	2.563	2.612	2.618	2.595	2.605	2.608	160-170	0.7174	705.2	100,100
180	2.716	2.686	2.687	2.716	2.717	2.685	2.689	2.723	170-180	0.2558	705.5	100,100
DEG	LUMINOUS INTENSITY:cd									UNIT:lm		

C Range: 0 - 360DEG
 C Interval: 15.0DEG
 Test Speed: HIGH
 Temperature:25.3°C
 Operators:DAMIN
 Test Date:2023-11-15

γ Range: 0 - 180DEG
 γ Interval: 1.0DEG
 Test System:EVERFINE GO-2000B_V1 SYSTEM V2.00.471
 Humidity:65.0%
 Test Distance:4.880m [K=1.0000]
 Remarks:

LUMINANCE LIMITATION CURVES



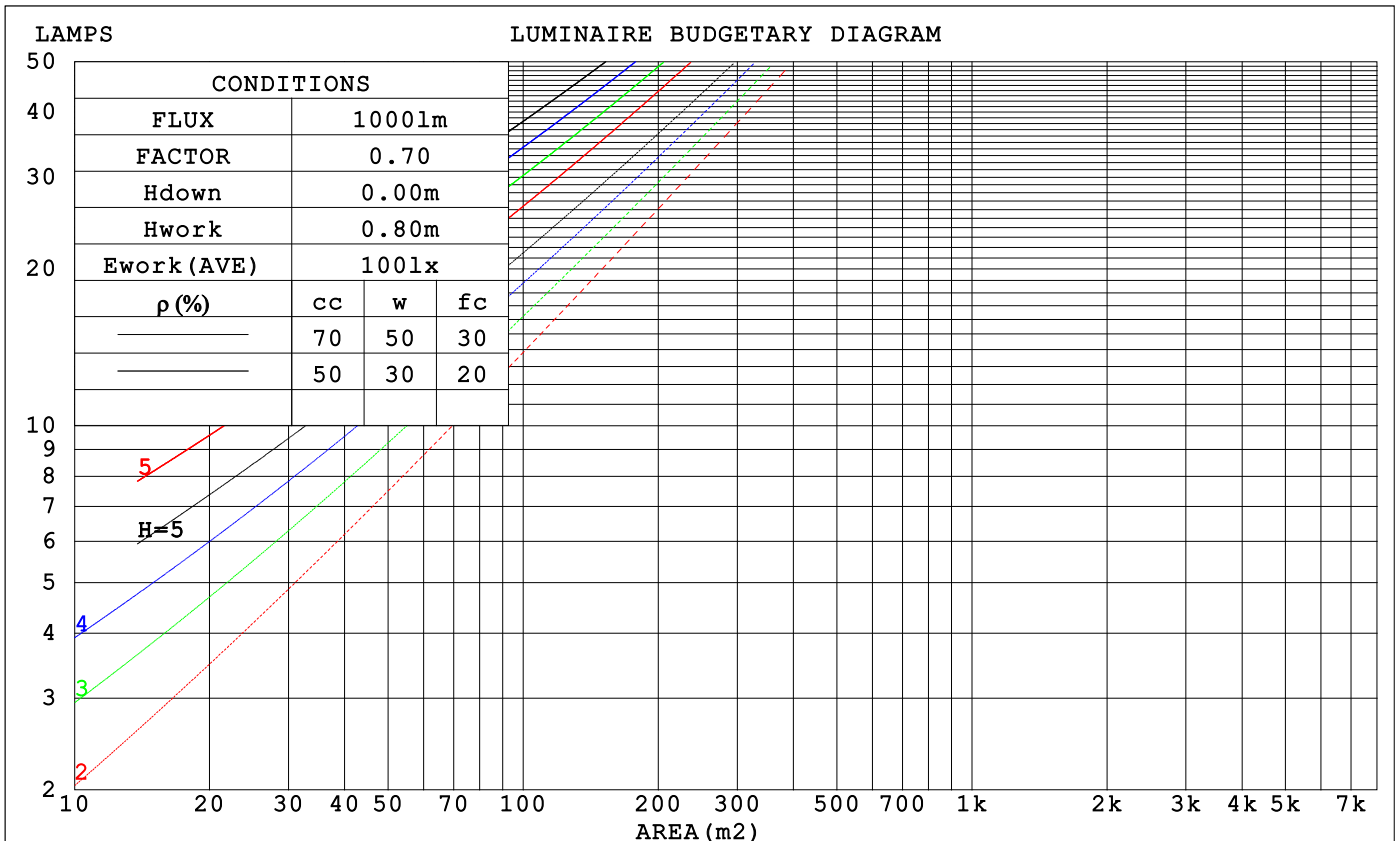
LUMINANCE cd/(m2)		
G (DEG)	C0/180	C90/270
85	18997	19652
80	22759	23289
75	25592	26059
70	27294	27682
65	28340	28682
60	28914	29172
55	29232	29419
50	29367	29469
45	29399	29418

C Range: 0 - 360DEG
 C Interval: 15.0DEG
 Test Speed: HIGH
 Temperature: 25.3°C
 Operators: DAMIN
 Test Date: 2023-11-15

γ Range: 0 - 180DEG
 γ Interval: 1.0DEG
 Test System: EVERFINE GO-2000B_V1 SYSTEM V2.00.471
 Humidity: 65.0%
 Test Distance: 4.880m [K=1.0000]
 Remarks:

CU AND LUMINAIRE BUDGETARY ESTIMATE DIAGRAM

ρ_{cc}	80%			70%			50%			30%			10%			0
ρ_w	50%	30%	10%	50%	30%	10%	50%	30%	10%	50%	30%	10%	50%	30%	10%	0
ρ_{fc}	20%			20%			20%			20%			20%			0
RCR	RCR:Room Cavity Ratio			Coefficients of Utilization(CU)												
0.0	1.19	1.19	1.19	1.16	1.16	1.16	1.10	1.10	1.10	1.05	1.05	1.05	1.01	1.01	1.01	.99
1.0	1.03	.99	.95	1.01	.97	.93	.96	.93	.90	.92	.89	.87	.88	.86	.84	.82
2.0	.89	.82	.77	.87	.81	.76	.84	.78	.74	.80	.76	.72	.77	.73	.70	.68
3.0	.78	.70	.63	.77	.69	.63	.73	.67	.61	.70	.65	.60	.68	.63	.59	.56
4.0	.69	.60	.53	.68	.59	.53	.65	.58	.52	.62	.56	.51	.60	.55	.50	.48
5.0	.62	.52	.46	.60	.52	.45	.58	.50	.45	.56	.49	.44	.54	.48	.43	.41
6.0	.55	.46	.40	.54	.46	.39	.52	.45	.39	.50	.44	.38	.49	.43	.38	.36
7.0	.50	.41	.35	.49	.41	.35	.47	.40	.34	.46	.39	.34	.44	.38	.34	.32
8.0	.46	.37	.31	.45	.37	.31	.43	.36	.31	.42	.35	.30	.41	.35	.30	.28
9.0	.42	.33	.28	.41	.33	.28	.40	.33	.27	.39	.32	.27	.37	.31	.27	.25
10.0	.38	.30	.25	.38	.30	.25	.37	.30	.25	.36	.29	.25	.35	.29	.24	.23



C Range: 0 - 360DEG
 C Interval: 15.0DEG
 Test Speed: HIGH
 Temperature: 25.3°C
 Operators: DAMIN
 Test Date: 2023-11-15

γ Range: 0 - 180DEG
 γ Interval: 1.0DEG
 Test System: EVERFINE GO-2000B_V1 SYSTEM V2.00.471
 Humidity: 65.0%
 Test Distance: 4.880m [K=1.0000]
 Remarks:

WEC AND CCEC

ρ_{cc}	80%			70%			50%			30%			10%			0
ρ_w	50%	30%	10%	50%	30%	10%	50%	30%	10%	50%	30%	10%	50%	30%	10%	0
ρ_{fc}	20%			20%			20%			20%			20%			0
RCR	RCR:Room Cavity Ratio						Wall Exitance Coefficients (WEC)									
0.0																
1.0	.318	.181	.057	.310	.177	.056	.296	.170	.054	.283	.163	.052	.271	.157	.051	
2.0	.298	.163	.050	.291	.160	.049	.279	.155	.048	.267	.150	.047	.256	.145	.046	
3.0	.275	.146	.044	.269	.144	.043	.258	.140	.042	.248	.136	.042	.238	.132	.041	
4.0	.253	.132	.039	.248	.130	.038	.238	.126	.038	.229	.123	.037	.220	.120	.036	
5.0	.234	.119	.034	.229	.118	.034	.220	.115	.034	.212	.112	.033	.204	.109	.033	
6.0	.216	.108	.031	.212	.107	.031	.204	.105	.030	.197	.102	.030	.190	.100	.030	
7.0	.201	.099	.028	.197	.098	.028	.190	.096	.028	.184	.094	.027	.178	.092	.027	
8.0	.188	.092	.026	.184	.091	.026	.178	.089	.025	.172	.087	.025	.166	.085	.025	
9.0	.176	.085	.024	.173	.084	.024	.167	.083	.023	.162	.081	.023	.156	.079	.023	
10.0	.165	.079	.022	.162	.078	.022	.157	.077	.022	.152	.076	.021	.148	.074	.021	

ρ_{cc}	80%			70%			50%			30%			10%			0
ρ_w	50%	30%	10%	50%	30%	10%	50%	30%	10%	50%	30%	10%	50%	30%	10%	0
ρ_{fc}	20%			20%			20%			20%			20%			0
RCR	RCR:Room Cavity Ratio						Ceiling Cavity Exitance Coefficients (CCEC)									
0.0	.202	.202	.202	.172	.172	.172	.118	.118	.118	.068	.068	.068	.022	.022	.022	
1.0	.192	.167	.145	.164	.144	.125	.112	.099	.086	.065	.057	.050	.021	.018	.016	
2.0	.184	.143	.109	.158	.123	.094	.108	.085	.065	.062	.050	.038	.020	.016	.012	
3.0	.177	.126	.085	.152	.108	.074	.104	.075	.052	.060	.044	.030	.019	.014	.010	
4.0	.169	.112	.069	.145	.097	.060	.100	.068	.042	.058	.040	.025	.019	.013	.008	
5.0	.162	.102	.058	.139	.088	.051	.096	.062	.036	.055	.036	.021	.018	.012	.007	
6.0	.155	.094	.050	.133	.081	.044	.092	.057	.031	.053	.033	.018	.017	.011	.006	
7.0	.148	.087	.044	.127	.075	.039	.088	.053	.027	.051	.031	.016	.016	.010	.005	
8.0	.141	.081	.040	.122	.070	.035	.084	.049	.025	.049	.029	.015	.016	.010	.005	
9.0	.135	.076	.037	.116	.066	.032	.081	.047	.023	.047	.027	.013	.015	.009	.004	
10.0	.129	.072	.034	.112	.063	.029	.077	.044	.021	.045	.026	.013	.015	.009	.004	

C Range: 0 - 360DEG
 C Interval: 15.0DEG
 Test Speed: HIGH
 Temperature: 25.3°C
 Operators: DAMIN
 Test Date: 2023-11-15

γ Range: 0 - 180DEG
 γ Interval: 1.0DEG
 Test System: EVERFINE GO-2000B_V1 SYSTEM V2.00.471
 Humidity: 65.0%
 Test Distance: 4.880m [K=1.0000]
 Remarks:

UGR(Unified Glare Rating) Table

ceiling/cavity	0.7	0.7	0.5	0.5	0.3	0.7	0.7	0.5	0.5	0.3
walls	0.5	0.3	0.5	0.3	0.3	0.5	0.3	0.5	0.3	0.3
working plane	0.2	0.2	0.2	0.2	0.2	0.2	0.2	0.2	0.2	0.2
Room dimensions	Viewed crosswise					Viewed endwise				
x = 2H y = 2H	26.1	27.6	26.4	27.8	28.1	26.1	27.7	26.4	27.9	28.1
3H	27.7	29.1	28.0	29.4	29.7	27.8	29.2	28.1	29.5	29.7
4H	28.4	29.7	28.7	30.0	30.3	28.5	29.8	28.8	30.1	30.4
6H	28.8	30.1	29.2	30.4	30.7	28.9	30.2	29.3	30.5	30.8
8H	29.0	30.2	29.3	30.5	30.8	29.1	30.3	29.4	30.6	30.9
12H	29.1	30.2	29.4	30.6	30.9	29.2	30.3	29.5	30.7	31.0
4H 2H	26.8	28.1	27.1	28.4	28.7	26.8	28.2	27.2	28.4	28.7
3H	28.6	29.8	29.0	30.1	30.4	28.7	29.8	29.0	30.2	30.5
4H	29.4	30.5	29.8	30.8	31.2	29.5	30.5	29.9	30.9	31.3
6H	30.0	30.9	30.4	31.3	31.7	30.1	31.0	30.5	31.4	31.8
8H	30.2	31.1	30.6	31.5	31.9	30.3	31.2	30.7	31.6	32.0
12H	30.3	31.1	30.7	31.5	32.0	30.4	31.2	30.8	31.6	32.1
8H 4H	29.7	30.6	30.1	31.0	31.4	29.8	30.7	30.2	31.1	31.5
6H	30.4	31.2	30.9	31.6	32.1	30.5	31.3	31.0	31.7	32.2
8H	30.7	31.4	31.2	31.8	32.3	30.8	31.5	31.3	31.9	32.4
12H	30.9	31.5	31.4	32.0	32.5	31.0	31.6	31.5	32.1	32.6
12H 4H	29.7	30.5	30.2	30.9	31.4	29.8	30.6	30.2	31.0	31.5
6H	30.5	31.2	31.0	31.6	32.1	30.6	31.3	31.1	31.7	32.2
8H	30.8	31.4	31.3	31.9	32.4	30.9	31.5	31.4	32.0	32.5
Variations with the observer position at spacings(CIE Pub.117):										
S = 1.0H	+ 0.1 / - 0.2					+ 0.1 / - 0.2				
1.5H	+ 0.2 / - 0.3					+ 0.2 / - 0.3				
2.0H	+ 0.2 / - 0.4					+ 0.2 / - 0.4				

CIE Pub.117, 705.5 lm Total Lamp Luminous Flux Correct (8log(F/F0) = -1.2)
 Area: 0.008 m2

C Range: 0 - 360DEG
 C Interval: 15.0DEG
 Test Speed: HIGH
 Temperature:25.3°C
 Operators:DAMIN
 Test Date:2023-11-15

γ Range: 0 - 180DEG
 γ Interval: 1.0DEG
 Test System:EVERFINE GO-2000B_V1 SYSTEM V2.00.471
 Humidity:65.0%
 Test Distance:4.880m [K=1.0000]
 Remarks:

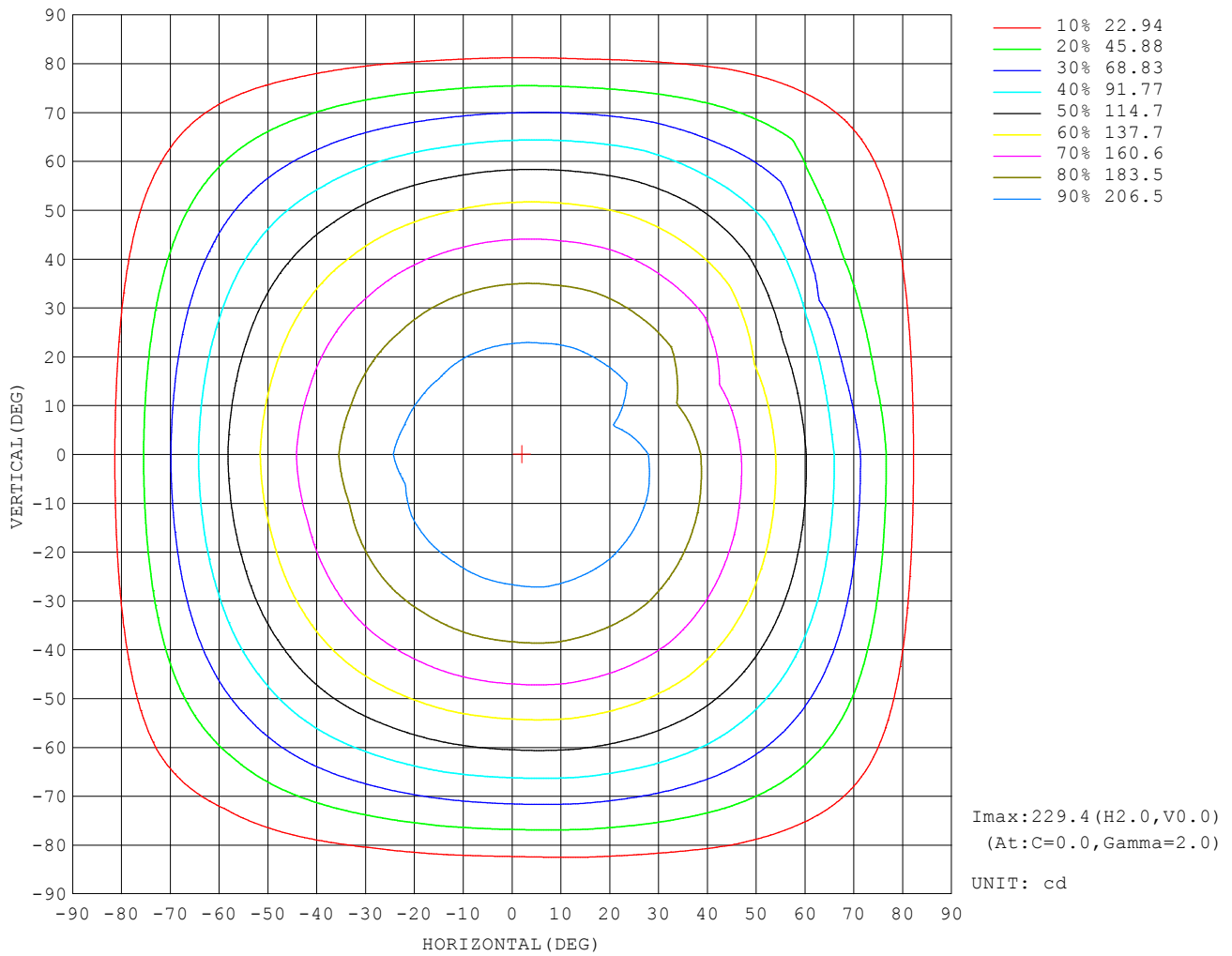
UTILIZATION FACTORS TABLE

REFLECTANCE										
Ceiling	0.8	0.8	0.8	0.7	0.7	0.7	0.5	0.5	0.5	0
Walls	0.7	0.5	0.3	0.7	0.5	0.3	0.7	0.5	0.3	0
Working plane	0.2	0.2	0.2	0.2	0.2	0.2	0.2	0.2	0.2	0
ROOM INDEX	UTILIZATION FACTORS (PERCENT) $k(RI) \times RCR = 5$									
$k = 0.60$	56	44	37	55	44	37	54	43	37	30
0.80	66	54	47	65	54	46	63	53	46	39
1.00	74	63	56	73	62	55	71	64	55	47
1.25	82	71	63	80	70	63	77	68	62	54
1.50	87	76	69	85	76	69	82	74	68	60
2.00	94	85	78	92	84	77	88	81	76	67
2.50	98	90	84	96	88	83	92	85	80	72
3.00	101	94	88	99	92	87	95	89	85	76
4.00	105	99	95	103	98	93	98	94	90	81
5.00	108	103	99	105	101	97	101	97	94	84
ROOM INDEX	UF (total)									Direct
According to DIN EN 13032-2 2004			Suspended				SHRNOM = 1.25			

C Range: 0 - 360DEG
 C Interval: 15.0DEG
 Test Speed: HIGH
 Temperature: 25.3°C
 Operators: DAMIN
 Test Date: 2023-11-15

γ Range: 0 - 180DEG
 γ Interval: 1.0DEG
 Test System: EVERFINE GO-2000B_V1 SYSTEM V2.00.471
 Humidity: 65.0%
 Test Distance: 4.880m [K=1.0000]
 Remarks:

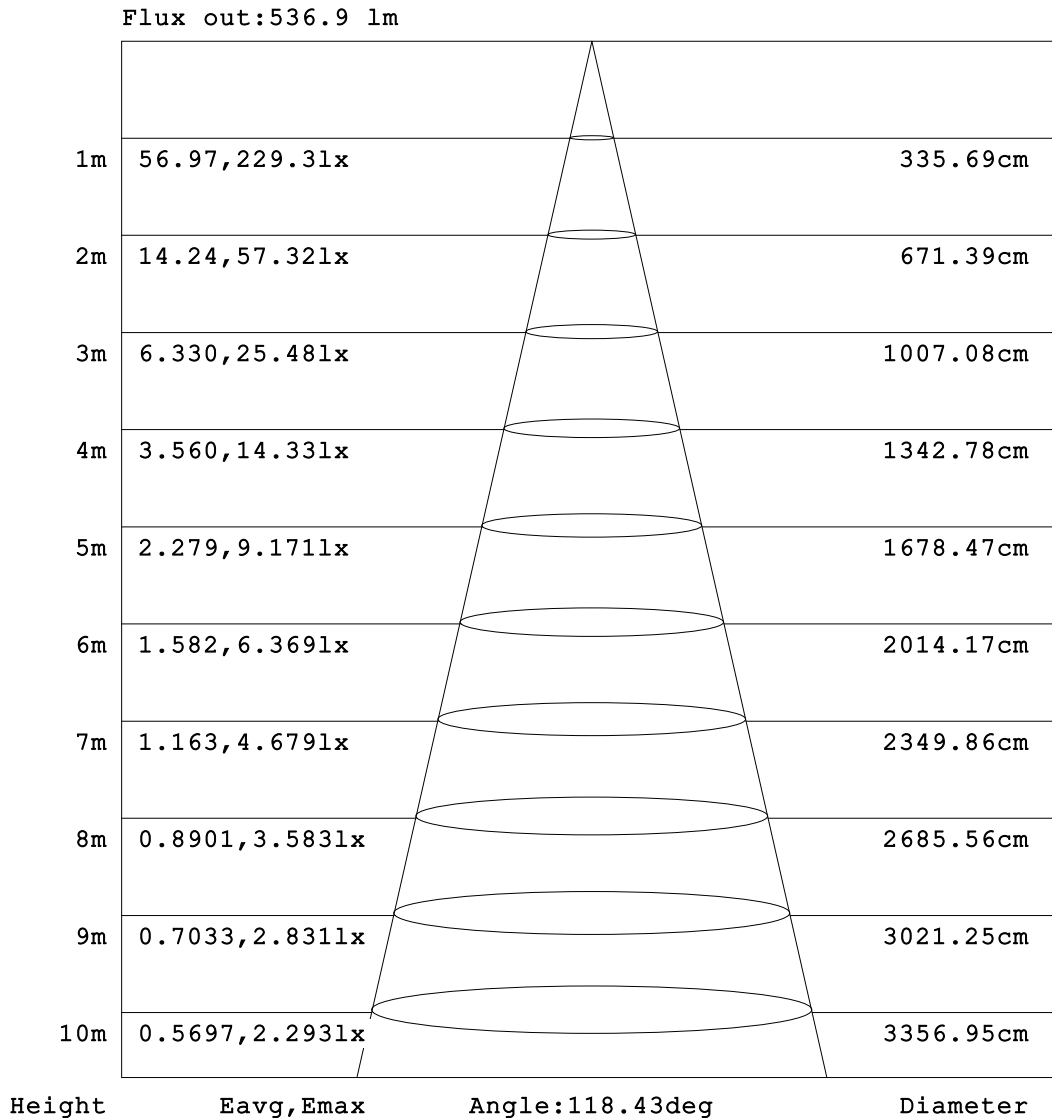
ISOCANDELA DIAGRAM



C Range: 0 - 360DEG
 C Interval: 15.0DEG
 Test Speed: HIGH
 Temperature: 25.3°C
 Operators: DAMIN
 Test Date: 2023-11-15

γ Range: 0 - 180DEG
 γ Interval: 1.0DEG
 Test System: EVERFINE GO-2000B_V1 SYSTEM V2.00.471
 Humidity: 65.0%
 Test Distance: 4.880m [K=1.0000]
 Remarks:

AAI Figure

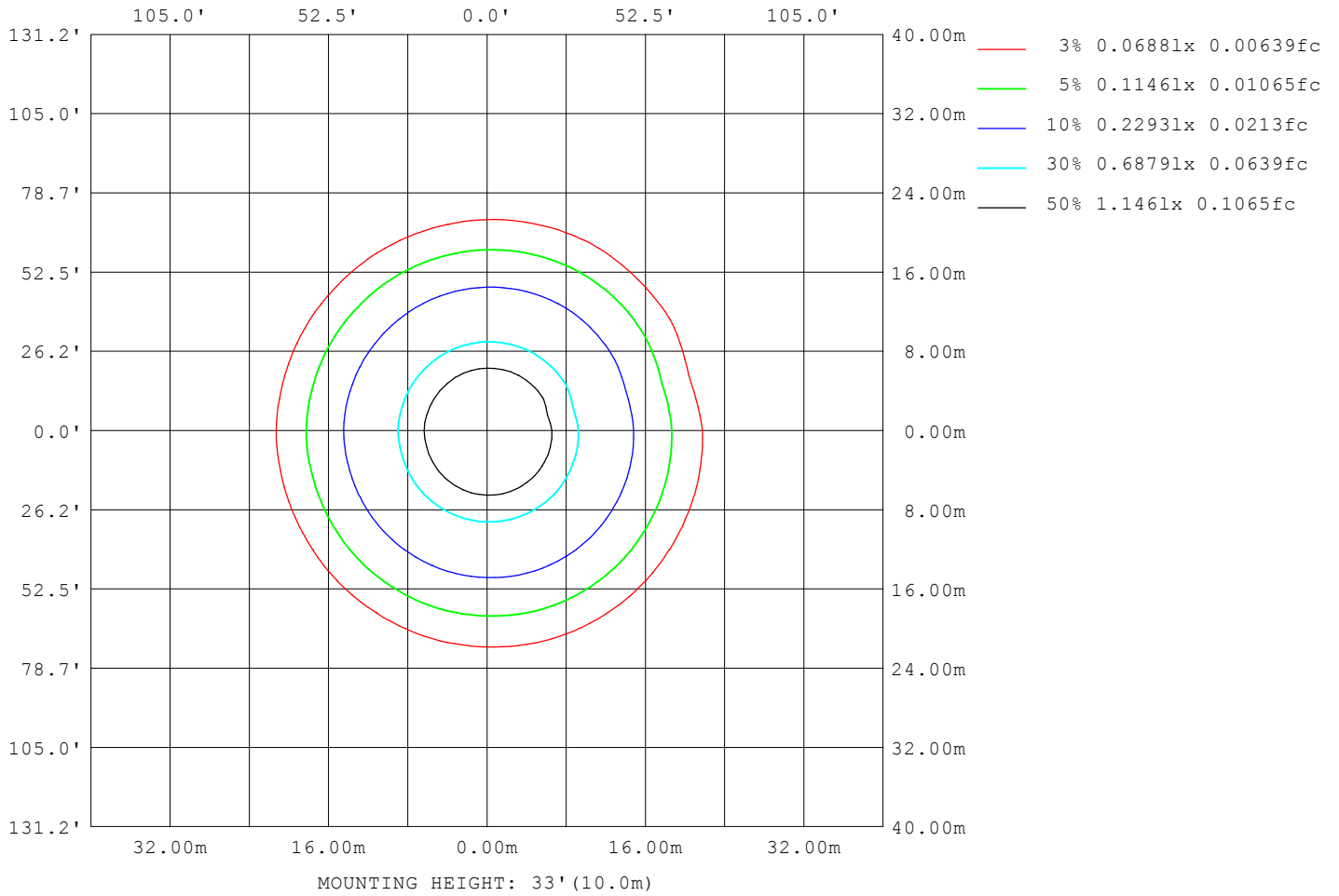


Note:The Curves indicate the illuminated area and the average illumination when the luminaire is at different distance.

C Range: 0 - 360DEG
 C Interval: 15.0DEG
 Test Speed: HIGH
 Temperature:25.3°C
 Operators:DAMIN
 Test Date:2023-11-15

γ Range: 0 - 180DEG
 γ Interval: 1.0DEG
 Test System:EVERFINE GO-2000B_V1 SYSTEM V2.00.471
 Humidity:65.0%
 Test Distance:4.880m [K=1.0000]
 Remarks:

ISOLUX DIAGRAM



C Range: 0 - 360DEG
 C Interval: 15.0DEG
 Test Speed: HIGH
 Temperature: 25.3°C
 Operators: DAMIN
 Test Date: 2023-11-15

γ Range: 0 - 180DEG
 γ Interval: 1.0DEG
 Test System: EVERFINE GO-2000B_V1 SYSTEM V2.00.471
 Humidity: 65.0%
 Test Distance: 4.880m [K=1.0000]
 Remarks:

LED Avg.L Report

NAME: LED Strip	TYPE: Indoor lighting	WEIGHT: 20g
SPEC.: 2835 100LED	DIM.: 500*8*1.2MM	SERIAL No.: 20231114009
MFR.: EVERFINE	SUR.: 500*8MM	Shielding Angle:

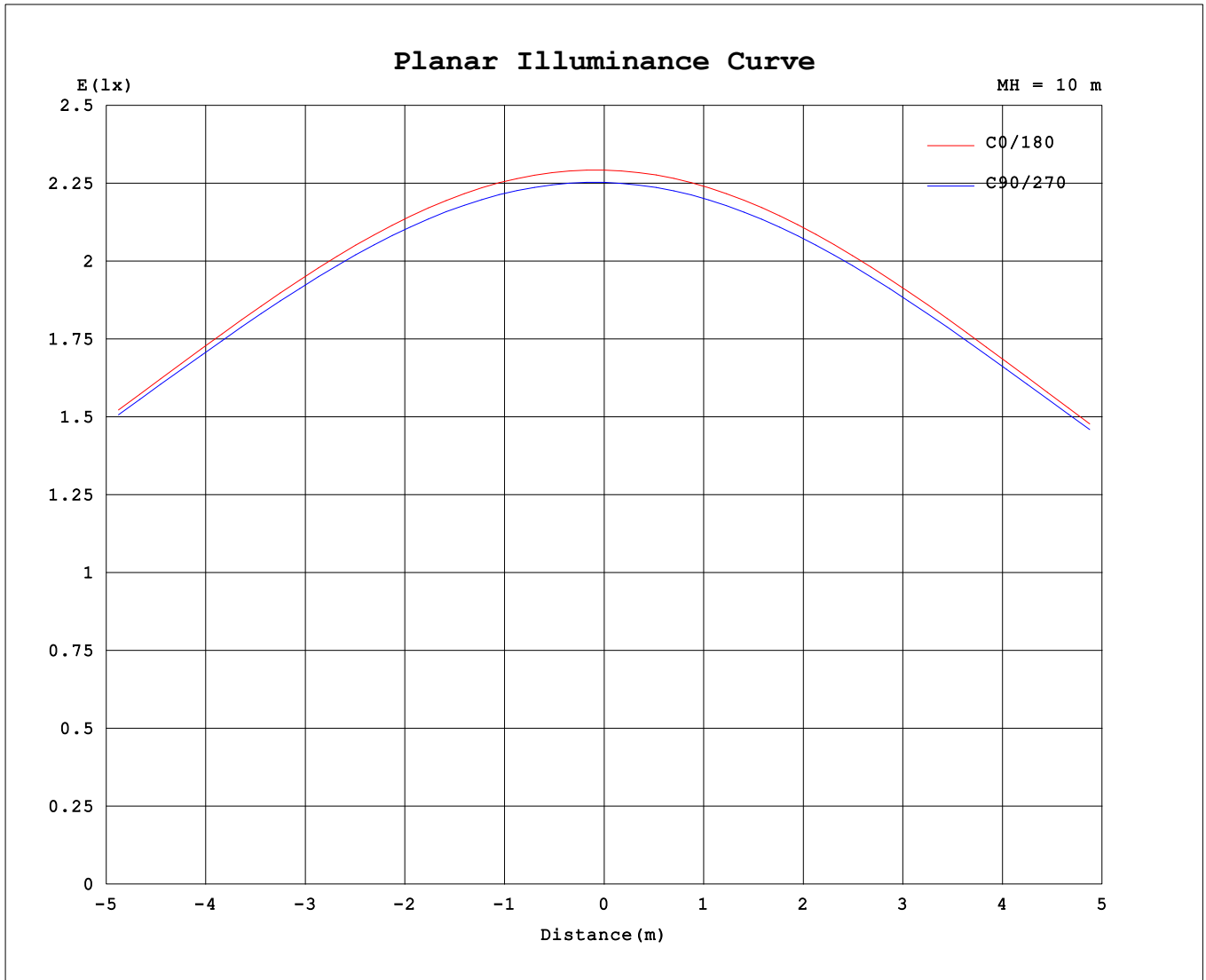
AvgL	cd/m2
L_0~180 (65) av	27291
L_0~180 (75) av	24322
L_0~180 (85) av	17515
L_90~270 (65) av	27478
L_90~270 (75) av	24523
L_90~270 (85) av	17446
L_45 (65) av	27304
L_45 (75) av	24292
L_45 (85) av	17855

Standard: GB/T 29293-2012

C Range: 0 - 360DEG
 C Interval: 15.0DEG
 Test Speed: HIGH
 Temperature:25.3°C
 Operators:DAMIN
 Test Date:2023-11-15

γ Range: 0 - 180DEG
 γ Interval: 1.0DEG
 Test System:EVERFINE GO-2000B_V1 SYSTEM V2.00.471
 Humidity:65.0%
 Test Distance:4.880m [K=1.0000]
 Remarks:

Planar Illuminance Curve



C Range: 0 - 360DEG
 C Interval: 15.0DEG
 Test Speed: HIGH
 Temperature: 25.3°C
 Operators: DAMIN
 Test Date: 2023-11-15

γ Range: 0 - 180DEG
 γ Interval: 1.0DEG
 Test System: EVERFINE GO-2000B_V1 SYSTEM V2.00.471
 Humidity: 65.0%
 Test Distance: 4.880m [K=1.0000]
 Remarks:

LUMINOUS DISTRIBUTION INTENSITY DATA

Table--1

UNIT: cd

C (DEG) \ γ (DEG)	0	15	30	45	60	75	90	105	120	135	150	165	180	195	210	225	240	255	270
0	229	228	227	226	226	226	225	225	226	226	228	222	229	228	227	226	226	226	225
5	229	229	227	227	226	226	225	225	225	225	226	221	228	226	225	224	224	224	224
10	227	228	226	226	225	225	224	223	223	223	223	218	225	223	221	220	221	221	221
15	224	224	223	223	222	222	220	220	219	219	219	215	220	217	216	215	216	216	216
20	218	220	219	219	218	217	216	214	213	213	213	210	213	211	209	209	209	210	210
25	211	213	213	213	212	211	209	208	206	206	205	203	205	203	201	201	201	202	203
30	203	205	205	205	204	203	201	199	198	197	195	193	196	193	192	191	192	193	194
35	192	194	195	195	194	193	191	190	187	186	185	183	185	182	181	180	181	182	183
40	180	182	184	184	183	182	180	178	176	174	172	170	172	170	168	168	168	170	171
45	166	169	170	171	170	169	166	165	162	161	158	157	158	156	155	154	155	156	158
50	151	154	155	156	155	154	152	150	147	145	143	142	143	140	139	139	139	141	143
55	134	136	138	139	139	138	135	133	130	129	126	125	126	124	123	122	123	124	126
60	116	118	119	121	120	119	117	115	112	110	108	107	108	106	105	104	105	106	108
65	95.8	97.9	99.1	100	100	99.5	97.0	95.1	92.6	90.8	88.6	88.0	88.7	86.7	86.1	85.3	86.0	86.8	88.8
70	74.7	76.9	77.6	79.1	78.7	78.4	75.7	74.0	71.8	70.2	68.1	68.1	68.3	66.7	65.9	65.3	65.8	66.6	68.3
75	53.0	54.7	55.5	56.6	56.4	55.9	54.0	52.6	50.5	49.1	47.3	47.9	47.7	46.3	45.7	45.2	45.6	46.2	47.6
80	31.6	33.2	33.7	34.7	34.3	34.0	32.4	31.5	29.7	28.6	27.0	28.5	27.9	26.6	26.3	25.7	26.2	26.4	27.4
85	13.2	14.5	14.7	15.6	15.1	15.0	13.7	13.3	12.1	11.4	10.4	12.7	11.2	10.3	10.2	9.82	10.1	10.1	10.6
90	2.34	2.80	2.86	3.16	2.93	2.75	1.95	2.27	2.04	1.98	1.87	4.68	1.82	1.73	1.84	1.84	1.91	1.79	1.35
95	0.92	0.97	1.04	1.03	0.87	0.77	0.78	0.83	0.87	0.92	1.17	4.42	1.09	1.16	1.18	1.14	0.86	0.86	0.84
100	0.81	0.81	0.81	0.80	0.80	0.81	0.81	0.84	0.85	0.90	1.02	4.49	0.87	0.88	0.91	0.92	0.92	0.91	0.91
105	0.89	0.89	0.88	0.89	0.89	0.91	0.92	0.94	0.93	0.97	1.09	4.58	1.01	1.01	1.04	1.04	1.05	1.05	1.05
110	1.03	1.03	1.02	1.03	1.03	1.06	1.07	1.08	1.08	1.09	1.15	4.76	1.15	1.16	1.18	1.18	1.20	1.20	1.20
115	1.17	1.17	1.16	1.17	1.17	1.20	1.21	1.22	1.22	1.24	1.24	4.86	1.29	1.30	1.33	1.33	1.35	1.35	1.36
120	1.31	1.31	1.30	1.31	1.31	1.34	1.36	1.37	1.36	1.37	1.38	4.01	1.44	1.44	1.46	1.47	1.49	1.49	1.50
125	1.44	1.44	1.43	1.45	1.45	1.48	1.50	1.51	1.50	1.51	1.51	2.20	1.57	1.58	1.60	1.61	1.63	1.63	1.64
130	1.58	1.58	1.58	1.59	1.59	1.62	1.64	1.65	1.64	1.65	1.65	1.99	1.71	1.71	1.74	1.74	1.76	1.77	1.77
135	1.72	1.72	1.72	1.73	1.73	1.76	1.77	1.79	1.78	1.79	1.79	1.81	1.84	1.85	1.87	1.88	1.90	1.90	1.91
140	1.85	1.87	1.85	1.87	1.87	1.90	1.91	1.92	1.91	1.93	1.93	1.86	1.96	1.97	1.99	2.00	2.02	2.02	2.03
145	1.98	2.01	1.99	2.00	2.00	2.02	2.03	2.05	2.05	2.06	2.06	1.98	2.08	2.09	2.11	2.12	2.14	2.14	2.14
150	2.11	2.14	2.12	2.13	2.13	2.15	2.16	2.17	2.17	2.19	2.19	2.09	2.20	2.21	2.22	2.23	2.25	2.25	2.25
155	2.24	2.26	2.24	2.25	2.24	2.27	2.27	2.29	2.29	2.31	2.32	2.26	2.32	2.31	2.33	2.33	2.35	2.35	2.35
160	2.37	2.38	2.36	2.36	2.35	2.38	2.37	2.39	2.40	2.42	2.44	2.42	2.43	2.41	2.43	2.43	2.44	2.44	2.44
165	2.48	2.48	2.46	2.47	2.46	2.47	2.48	2.50	2.50	2.52	2.55	2.59	2.53	2.50	2.52	2.52	2.53	2.52	2.53
170	2.58	2.58	2.56	2.56	2.55	2.57	2.56	2.58	2.58	2.61	2.65	2.78	2.62	2.59	2.60	2.60	2.61	2.60	2.61
175	2.66	2.66	2.63	2.64	2.63	2.64	2.64	2.65	2.65	2.69	2.75	2.99	2.68	2.65	2.66	2.66	2.67	2.66	2.66
180	2.72	2.70	2.68	2.69	2.68	2.68	2.69	2.69	2.70	2.72	2.87	3.26	2.72	2.70	2.69	2.68	2.68	2.68	2.69

C Range: 0 - 360DEG
 C Interval: 15.0DEG
 Test Speed: HIGH
 Temperature: 25.3°C
 Operators: DAMIN
 Test Date: 2023-11-15

γ Range: 0 - 180DEG
 γ Interval: 1.0DEG
 Test System: EVERFINE GO-2000B_V1 SYSTEM V2.00.471
 Humidity: 65.0%
 Test Distance: 4.880m [K=1.0000]
 Remarks:

LUMINOUS DISTRIBUTION INTENSITY DATA

Table--2

UNIT: cd

C (DEG) \ γ (DEG)	285	300	315	330	345														
0	225	226	226	228	222														
5	224	225	226	228	221														
10	221	223	224	226	217														
15	217	219	220	222	214														
20	211	213	215	217	208														
25	204	206	208	210	202														
30	195	198	200	202	193														
35	185	188	189	192	184														
40	173	176	178	180	172														
45	160	163	164	167	159														
50	145	148	149	152	144														
55	128	131	133	133	128														
60	110	113	114	114	108														
65	90.9	93.4	92.8	94.0	84.6														
70	70.3	72.5	72.1	74.1	51.4														
75	48.7	49.7	50.3	53.2	27.2														
80	27.9	28.9	30.9	31.8	29.8														
85	10.4	12.2	12.9	7.25	14.8														
90	1.68	1.46	2.55	3.13	3.30														
95	0.83	0.95	1.17	1.14	1.42														
100	0.88	0.88	0.86	0.88	1.28														
105	1.02	1.01	0.99	1.01	1.40														
110	1.17	1.15	1.13	1.16	1.59														
115	1.32	1.30	1.28	1.30	1.78														
120	1.46	1.44	1.42	1.44	2.04														
125	1.60	1.58	1.56	1.57	2.42														
130	1.74	1.71	1.69	1.72	2.91														
135	1.87	1.85	1.83	1.86	3.28														
140	1.99	1.98	1.96	1.99	2.93														
145	2.11	2.10	2.09	2.12	2.99														
150	2.22	2.21	2.21	2.25	3.17														
155	2.33	2.32	2.32	2.37	3.24														
160	2.42	2.42	2.42	2.48	3.26														
165	2.51	2.51	2.52	2.58	3.27														
170	2.59	2.60	2.61	2.67	3.29														
175	2.65	2.67	2.68	2.75	3.30														
180	2.69	2.70	2.72	2.78	3.24														

C Range: 0 - 360DEG
 C Interval: 15.0DEG
 Test Speed: HIGH
 Temperature:25.3°C
 Operators:DAMIN
 Test Date:2023-11-15

γ Range: 0 - 180DEG
 γ Interval: 1.0DEG
 Test System:EVERFINE GO-2000B_V1 SYSTEM V2.00.471
 Humidity:65.0%
 Test Distance:4.880m [K=1.0000]
 Remarks: