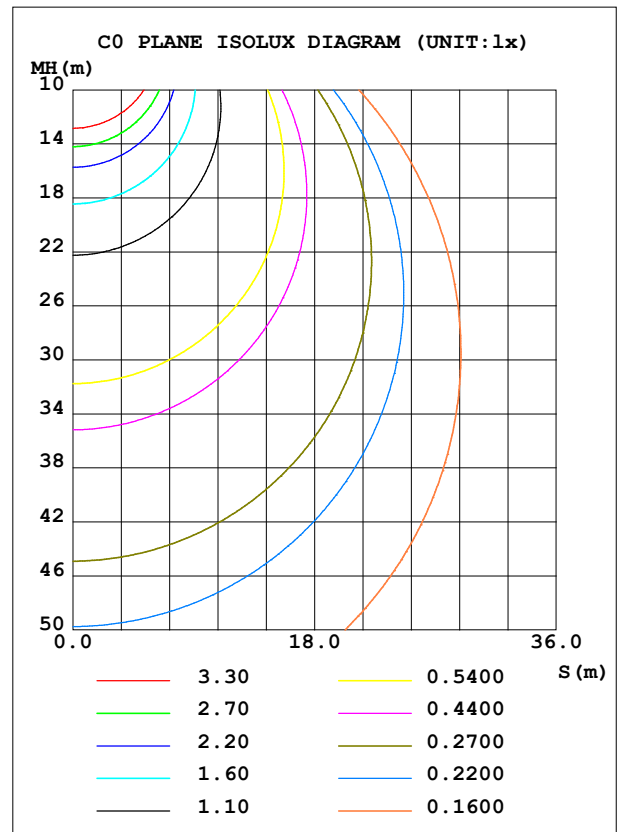
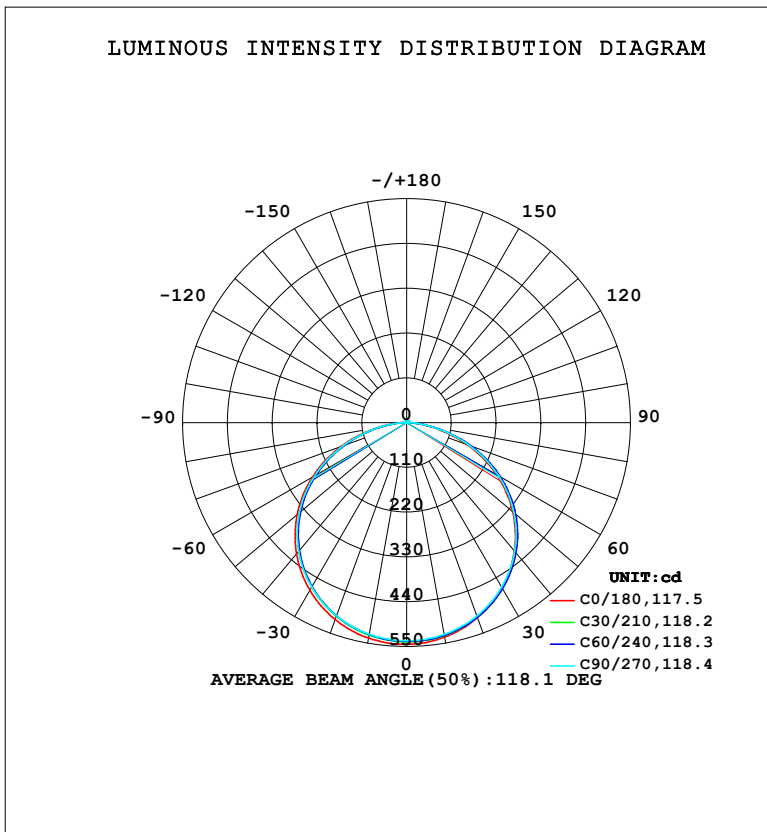


LUMINAIRE PHOTOMETRIC TEST REPORT

NAME: LED Strip	TYPE: Indoor lighting	WEIGHT: 20g
SPEC.: 2835 140LED	DIM.: 500*10*1.2MM	SERIAL No.: 20231123007
MFR.: EVERFINE	SUR.: 500*10MM	Shielding Angle:

DATA OF LAMP		PHOTOMETRIC DATA			
MODEL: B-24 (WCP) -HR-M-CV-ME-EP		Imax (cd)	545.2	S/MH (C0/180)	1.30
NOMINAL POWER (W)	11.6292	LOR (%)	100.0	S/MH (C90/270)	1.29
RATED VOLTAGE (V)	DC 24V	TOTAL FLUX (lm)	1655.9	η UP, DN (C0-180)	0.7,49.0
NOMINAL FLUX (lm)	1655.86	CIE CLASS	DIRECT	η UP, DN (C180-360)	0.7,49.7
LAMPS INSIDE	1	η up (%)	1.3	CIBSE SHR NOM	1.25
TEST VOLTAGE (V)	DC 24V	η down (%)	98.7	CIBSE SHR MAX	1.35



C Range: 0 - 360DEG
 C Interval: 15.0DEG
 Test Speed: HIGH
 Temperature: 25.3°C
 Operators: DAMIN
 Test Date: 2023-11-24

γ Range: 0 - 180DEG
 γ Interval: 1.0DEG
 Test System: EVERFINE GO-2000B_V1 SYSTEM V2.00.471
 Humidity: 65.0%
 Test Distance: 4.880m [K=1.0000]
 Remarks:

ZONAL FLUX DIAGRAM

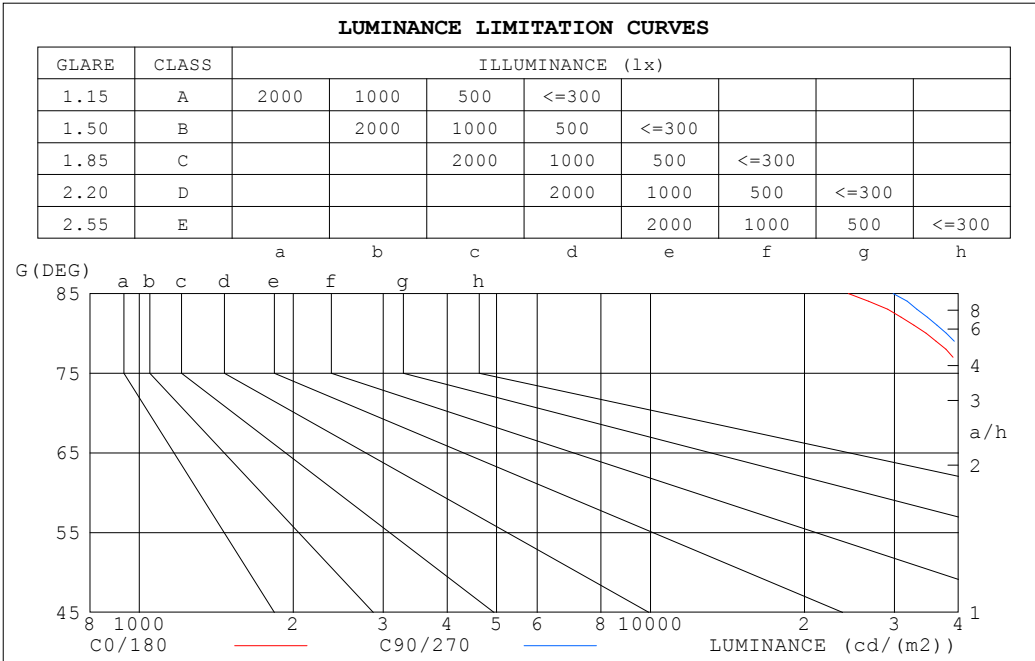
ZONAL FLUX DIAGRAM:

γ	C0	C45	C90	C135	C180	C225	C270	C315	γ	Φ zone	Φ total	%lum,lamp
10	535.3	531.0	528.3	529.1	537.6	528.4	528.0	532.0	0- 10	51.10	51.10	3.09,3.09
20	509.8	508.8	505.3	504.3	514.5	503.8	504.8	510.2	10- 20	147.3	198.4	12,12
30	468.5	471.2	466.9	464.3	475.4	464.0	466.3	473.0	20- 30	226.1	424.5	25.6,25.6
40	411.7	418.1	413.1	408.8	420.7	409.1	412.7	420.2	30- 40	277.6	702.1	42.4,42.4
50	340.2	349.6	344.1	338.1	351.0	339.5	344.3	352.3	40- 50	294.3	996.4	60.2,60.2
60	254.6	265.6	260.5	252.6	267.2	256.0	261.2	269.4	50- 60	272.2	1269	76.6,76.6
70	157.5	169.2	164.1	156.5	171.7	160.9	165.6	174.1	60- 70	211.7	1480	89.4,89.4
80	60.10	70.04	65.84	59.66	73.23	64.88	67.72	74.08	70- 80	121.6	1602	96.7,96.7
90	2.595	5.167	2.483	3.575	4.830	4.219	3.822	4.946	80- 90	32.06	1634	98.7,98.7
100	1.847	1.854	1.879	1.905	1.866	1.961	1.983	1.898	90-100	2.379	1636	98.8,98.8
110	2.486	2.455	2.558	2.536	2.515	2.627	2.687	2.540	100-110	2.335	1639	99,99
120	3.152	3.139	3.267	3.212	3.192	3.314	3.407	3.226	110-120	2.869	1642	99.1,99.1
130	3.811	3.817	3.954	3.888	3.849	3.982	4.081	3.895	120-130	3.199	1645	99.3,99.3
140	4.460	4.499	4.613	4.546	4.488	4.618	4.710	4.546	130-140	3.275	1648	99.5,99.5
150	5.079	5.133	5.207	5.163	5.096	5.205	5.277	5.154	140-150	3.051	1651	99.7,99.7
160	5.690	5.684	5.732	5.716	5.688	5.728	5.767	5.681	150-160	2.514	1654	99.9,99.9
170	6.215	6.149	6.159	6.163	6.213	6.167	6.181	6.138	160-170	1.680	1655	100,100
180	6.501	6.424	6.422	6.424	6.498	6.421	6.424	6.422	170-180	0.5998	1656	100,100
DEG	LUMINOUS INTENSITY:cd									UNIT:lm		

C Range: 0 - 360DEG
 C Interval: 15.0DEG
 Test Speed: HIGH
 Temperature:25.3°C
 Operators:DAMIN
 Test Date:2023-11-24

γ Range: 0 - 180DEG
 γ Interval: 1.0DEG
 Test System:EVERFINE GO-2000B_V1 SYSTEM V2.00.471
 Humidity:65.0%
 Test Distance:4.880m [K=1.0000]
 Remarks:

LUMINANCE LIMITATION CURVES



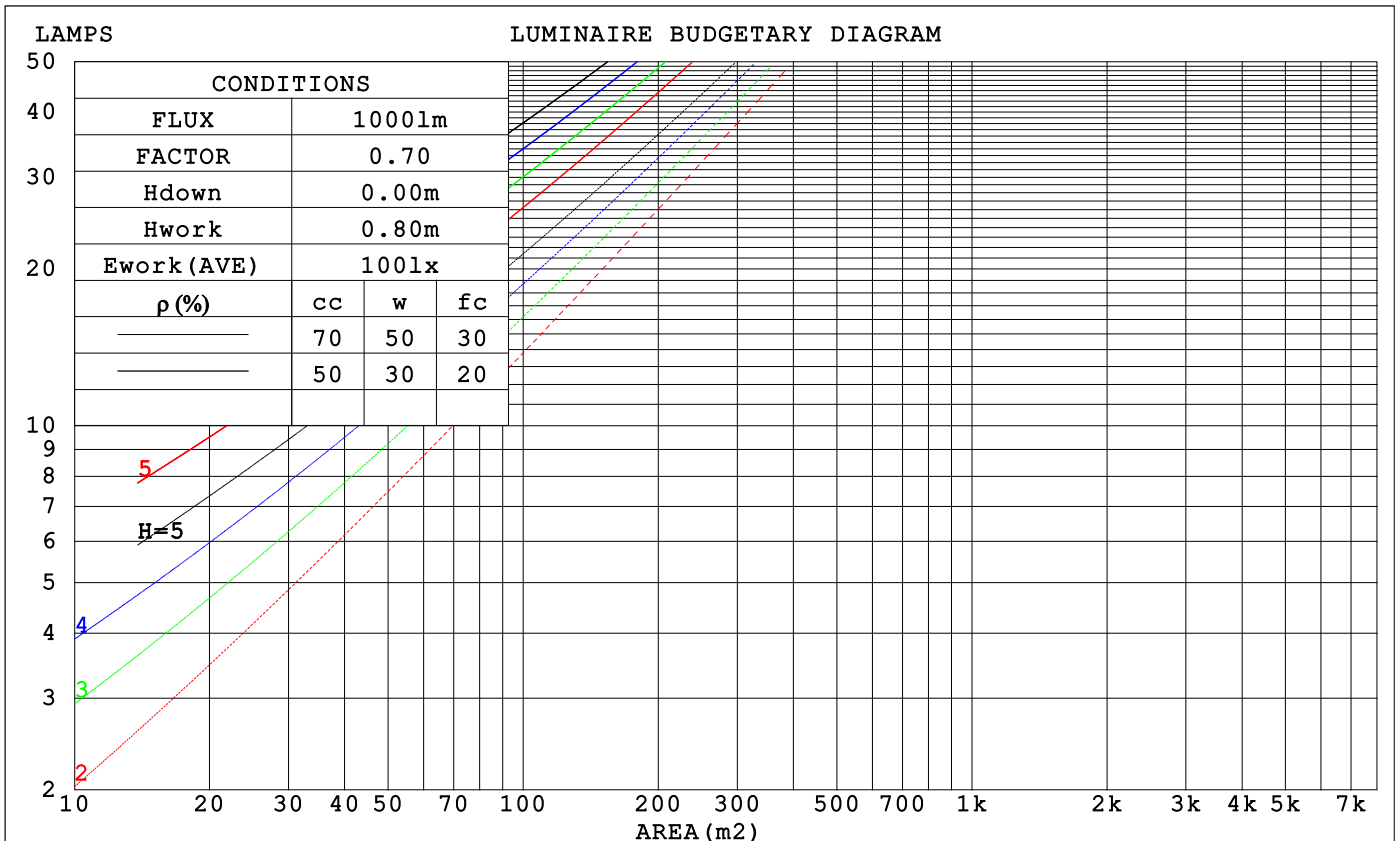
LUMINANCE cd/(m2)		
G (DEG)	C0/180	C90/270
85	24389	29839
80	34613	37914
75	41555	44028
70	46060	47990
65	49028	50553
60	50919	52094
55	52157	53018
50	52919	53535
45	53428	53811

C Range: 0 - 360DEG
 C Interval: 15.0DEG
 Test Speed: HIGH
 Temperature: 25.3°C
 Operators: DAMIN
 Test Date: 2023-11-24

γ Range: 0 - 180DEG
 γ Interval: 1.0DEG
 Test System: EVERFINE GO-2000B_V1 SYSTEM V2.00.471
 Humidity: 65.0%
 Test Distance: 4.880m [K=1.0000]
 Remarks:

CU AND LUMINAIRE BUDGETARY ESTIMATE DIAGRAM

ρ_{cc}	80%			70%			50%			30%			10%			0
ρ_w	50%	30%	10%	50%	30%	10%	50%	30%	10%	50%	30%	10%	50%	30%	10%	0
ρ_{fc}	20%			20%			20%			20%			20%			0
RCR	RCR:Room Cavity Ratio			Coefficients of Utilization(CU)												
0.0	1.19	1.19	1.19	1.16	1.16	1.16	1.10	1.10	1.10	1.05	1.05	1.05	1.01	1.01	1.01	.99
1.0	1.03	.99	.95	1.01	.97	.93	.96	.93	.90	.92	.90	.87	.88	.86	.84	.82
2.0	.90	.83	.77	.88	.81	.76	.84	.78	.74	.80	.76	.72	.77	.73	.70	.68
3.0	.78	.70	.63	.77	.69	.63	.74	.67	.62	.71	.65	.60	.68	.63	.59	.57
4.0	.69	.60	.54	.68	.60	.53	.65	.58	.52	.63	.56	.51	.60	.55	.50	.48
5.0	.62	.53	.46	.61	.52	.46	.58	.51	.45	.56	.49	.44	.54	.48	.44	.41
6.0	.55	.46	.40	.54	.46	.40	.52	.45	.39	.51	.44	.39	.49	.43	.38	.36
7.0	.50	.41	.35	.49	.41	.35	.48	.40	.35	.46	.39	.34	.45	.39	.34	.32
8.0	.46	.37	.31	.45	.37	.31	.44	.36	.31	.42	.35	.31	.41	.35	.30	.28
9.0	.42	.34	.28	.41	.33	.28	.40	.33	.28	.39	.32	.27	.38	.32	.27	.25
10.0	.39	.31	.25	.38	.30	.25	.37	.30	.25	.36	.29	.25	.35	.29	.25	.23



C Range: 0 - 360DEG
 C Interval: 15.0DEG
 Test Speed: HIGH
 Temperature: 25.3°C
 Operators: DAMIN
 Test Date: 2023-11-24

γ Range: 0 - 180DEG
 γ Interval: 1.0DEG
 Test System: EVERFINE GO-2000B_V1 SYSTEM V2.00.471
 Humidity: 65.0%
 Test Distance: 4.880m [K=1.0000]
 Remarks:

WEC AND CCEC

ρ_{cc}	80%			70%			50%			30%			10%			0
ρ_w	50%	30%	10%	50%	30%	10%	50%	30%	10%	50%	30%	10%	50%	30%	10%	0
ρ_{fc}	20%			20%			20%			20%			20%			0
RCR	RCR:Room Cavity Ratio						Wall Exitance Coefficients (WEC)									
0.0																
1.0	.315	.179	.057	.307	.175	.056	.293	.168	.054	.280	.162	.052	.268	.156	.050	
2.0	.296	.162	.050	.289	.159	.049	.277	.154	.048	.266	.149	.047	.255	.144	.045	
3.0	.274	.146	.044	.268	.143	.043	.257	.139	.042	.246	.135	.041	.237	.131	.041	
4.0	.252	.131	.039	.247	.129	.038	.237	.126	.038	.228	.122	.037	.220	.119	.036	
5.0	.233	.119	.034	.228	.117	.034	.219	.114	.034	.211	.112	.033	.204	.109	.033	
6.0	.216	.108	.031	.212	.107	.031	.204	.104	.030	.196	.102	.030	.190	.100	.030	
7.0	.201	.099	.028	.197	.098	.028	.190	.096	.028	.183	.094	.027	.177	.092	.027	
8.0	.187	.091	.026	.184	.091	.026	.178	.089	.025	.172	.087	.025	.166	.085	.025	
9.0	.175	.085	.024	.172	.084	.024	.167	.082	.023	.161	.081	.023	.156	.079	.023	
10.0	.165	.079	.022	.162	.078	.022	.157	.077	.022	.152	.076	.021	.147	.074	.021	

ρ_{cc}	80%			70%			50%			30%			10%			0
ρ_w	50%	30%	10%	50%	30%	10%	50%	30%	10%	50%	30%	10%	50%	30%	10%	0
ρ_{fc}	20%			20%			20%			20%			20%			0
RCR	RCR:Room Cavity Ratio						Ceiling Cavity Exitance Coefficients (CCEC)									
0.0	.201	.201	.201	.171	.171	.171	.117	.117	.117	.067	.067	.067	.021	.021	.021	
1.0	.191	.166	.144	.163	.143	.124	.112	.098	.086	.064	.057	.050	.021	.018	.016	
2.0	.183	.142	.108	.157	.122	.093	.107	.085	.065	.062	.049	.038	.020	.016	.012	
3.0	.175	.125	.084	.150	.107	.073	.103	.075	.051	.060	.044	.030	.019	.014	.010	
4.0	.168	.111	.068	.144	.096	.059	.099	.067	.042	.057	.039	.025	.018	.013	.008	
5.0	.161	.101	.057	.138	.087	.050	.095	.061	.035	.055	.036	.021	.018	.012	.007	
6.0	.153	.093	.049	.132	.080	.043	.091	.056	.030	.053	.033	.018	.017	.011	.006	
7.0	.147	.086	.043	.126	.074	.038	.087	.052	.027	.051	.031	.016	.016	.010	.005	
8.0	.140	.080	.039	.121	.069	.034	.083	.049	.024	.049	.029	.014	.016	.009	.005	
9.0	.134	.075	.036	.115	.065	.031	.080	.046	.022	.047	.027	.013	.015	.009	.004	
10.0	.128	.071	.033	.110	.062	.029	.077	.043	.020	.045	.026	.012	.014	.008	.004	

C Range: 0 - 360DEG
 C Interval: 15.0DEG
 Test Speed: HIGH
 Temperature: 25.3°C
 Operators: DAMIN
 Test Date: 2023-11-24

γ Range: 0 - 180DEG
 γ Interval: 1.0DEG
 Test System: EVERFINE GO-2000B_V1 SYSTEM V2.00.471
 Humidity: 65.0%
 Test Distance: 4.880m [K=1.0000]
 Remarks:

UGR(Unified Glare Rating) Table

ceiling/cavity	0.7	0.7	0.5	0.5	0.3	0.7	0.7	0.5	0.5	0.3
walls	0.5	0.3	0.5	0.3	0.3	0.5	0.3	0.5	0.3	0.3
working plane	0.2	0.2	0.2	0.2	0.2	0.2	0.2	0.2	0.2	0.2
Room dimensions	Viewed crosswise					Viewed endwise				
x = 2H y = 2H	24.9	26.4	25.2	26.7	26.9	25.0	26.5	25.3	26.8	27.0
3H	26.5	27.9	26.8	28.1	28.4	26.6	28.0	26.9	28.3	28.5
4H	27.0	28.4	27.4	28.6	28.9	27.2	28.6	27.6	28.8	29.1
6H	27.4	28.7	27.8	29.0	29.3	27.6	28.9	28.0	29.2	29.5
8H	27.5	28.7	27.9	29.0	29.3	27.7	29.0	28.1	29.3	29.6
12H	27.5	28.7	27.9	29.0	29.3	27.8	29.0	28.2	29.3	29.6
4H 2H	25.6	26.9	25.9	27.2	27.5	25.7	27.0	26.0	27.3	27.6
3H	27.3	28.5	27.7	28.8	29.1	27.4	28.6	27.8	28.9	29.3
4H	28.0	29.1	28.4	29.4	29.8	28.2	29.3	28.6	29.6	30.0
6H	28.5	29.4	28.9	29.8	30.2	28.7	29.7	29.1	30.0	30.4
8H	28.6	29.5	29.1	29.9	30.3	28.9	29.8	29.3	30.2	30.6
12H	28.7	29.5	29.1	29.9	30.3	29.0	29.8	29.4	30.2	30.6
8H 4H	28.3	29.2	28.7	29.6	30.0	28.5	29.3	28.9	29.7	30.1
6H	28.9	29.7	29.4	30.1	30.5	29.1	29.9	29.6	30.3	30.8
8H	29.1	29.8	29.6	30.2	30.7	29.4	30.0	29.9	30.5	31.0
12H	29.3	29.8	29.8	30.3	30.8	29.6	30.1	30.1	30.6	31.1
12H 4H	28.3	29.1	28.8	29.5	30.0	28.5	29.3	28.9	29.7	30.1
6H	29.0	29.6	29.5	30.1	30.6	29.2	29.8	29.7	30.3	30.8
8H	29.2	29.8	29.7	30.3	30.8	29.5	30.0	30.0	30.5	31.0
Variations with the observer position at spacings(CIE Pub.117):										
S = 1.0H	+ 0.2 / - 0.2					+ 0.2 / - 0.2				
1.5H	+ 0.2 / - 0.4					+ 0.2 / - 0.4				
2.0H	+ 0.2 / - 0.4					+ 0.2 / - 0.4				

CIE Pub.117, 1656 lm Total Lamp Luminous Flux Correct (8log(F/F0) = 1.8)
 Area: 0.01 m2

C Range: 0 - 360DEG
 C Interval: 15.0DEG
 Test Speed: HIGH
 Temperature:25.3°C
 Operators:DAMIN
 Test Date:2023-11-24

γ Range: 0 - 180DEG
 γ Interval: 1.0DEG
 Test System:EVERFINE GO-2000B_V1 SYSTEM V2.00.471
 Humidity:65.0%
 Test Distance:4.880m [K=1.0000]
 Remarks:

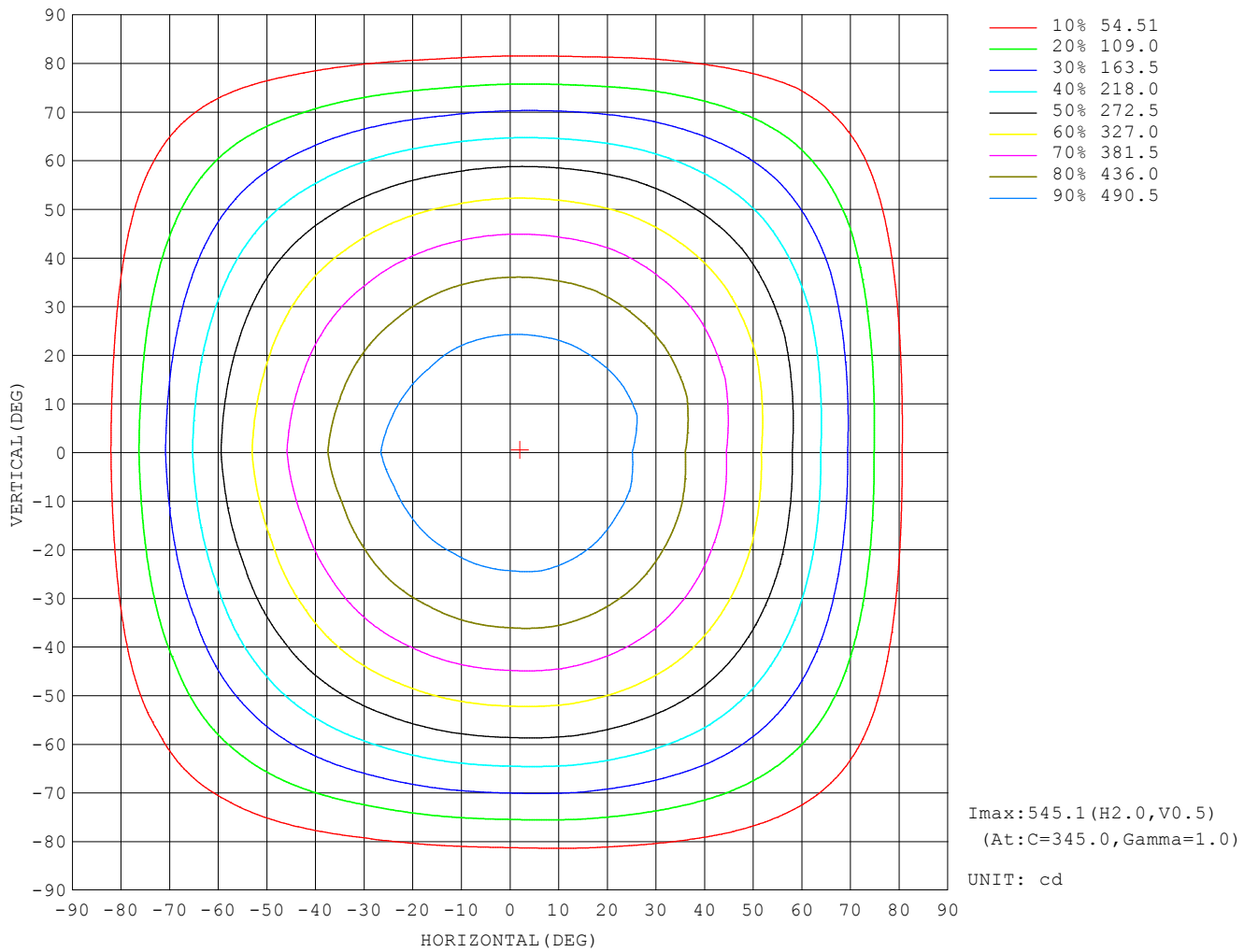
UTILIZATION FACTORS TABLE

REFLECTANCE										
Ceiling	0.8	0.8	0.8	0.7	0.7	0.7	0.5	0.5	0.5	0
Walls	0.7	0.5	0.3	0.7	0.5	0.3	0.7	0.5	0.3	0
Working plane	0.2	0.2	0.2	0.2	0.2	0.2	0.2	0.2	0.2	0
ROOM INDEX	UTILIZATION FACTORS (PERCENT) $k(RI) \times RCR = 5$									
$k = 0.60$	56	44	37	55	44	37	54	44	37	30
0.80	66	54	47	65	54	47	63	53	46	39
1.00	75	63	56	73	63	56	71	64	55	48
1.25	82	71	64	80	70	63	77	69	62	55
1.50	87	77	70	85	76	69	82	74	68	60
2.00	94	85	79	92	84	78	88	82	76	68
2.50	98	90	84	96	89	83	92	86	81	72
3.00	101	94	89	99	93	88	95	90	85	76
4.00	106	100	95	103	98	93	99	94	91	81
5.00	108	103	99	105	101	97	101	97	94	84
ROOM INDEX	UF(total)									Direct
According to DIN EN 13032-2 2004			Suspended				SHRNOM = 1.25			

C Range: 0 - 360DEG
 C Interval: 15.0DEG
 Test Speed: HIGH
 Temperature: 25.3°C
 Operators: DAMIN
 Test Date: 2023-11-24

γ Range: 0 - 180DEG
 γ Interval: 1.0DEG
 Test System: EVERFINE GO-2000B_V1 SYSTEM V2.00.471
 Humidity: 65.0%
 Test Distance: 4.880m [K=1.0000]
 Remarks:

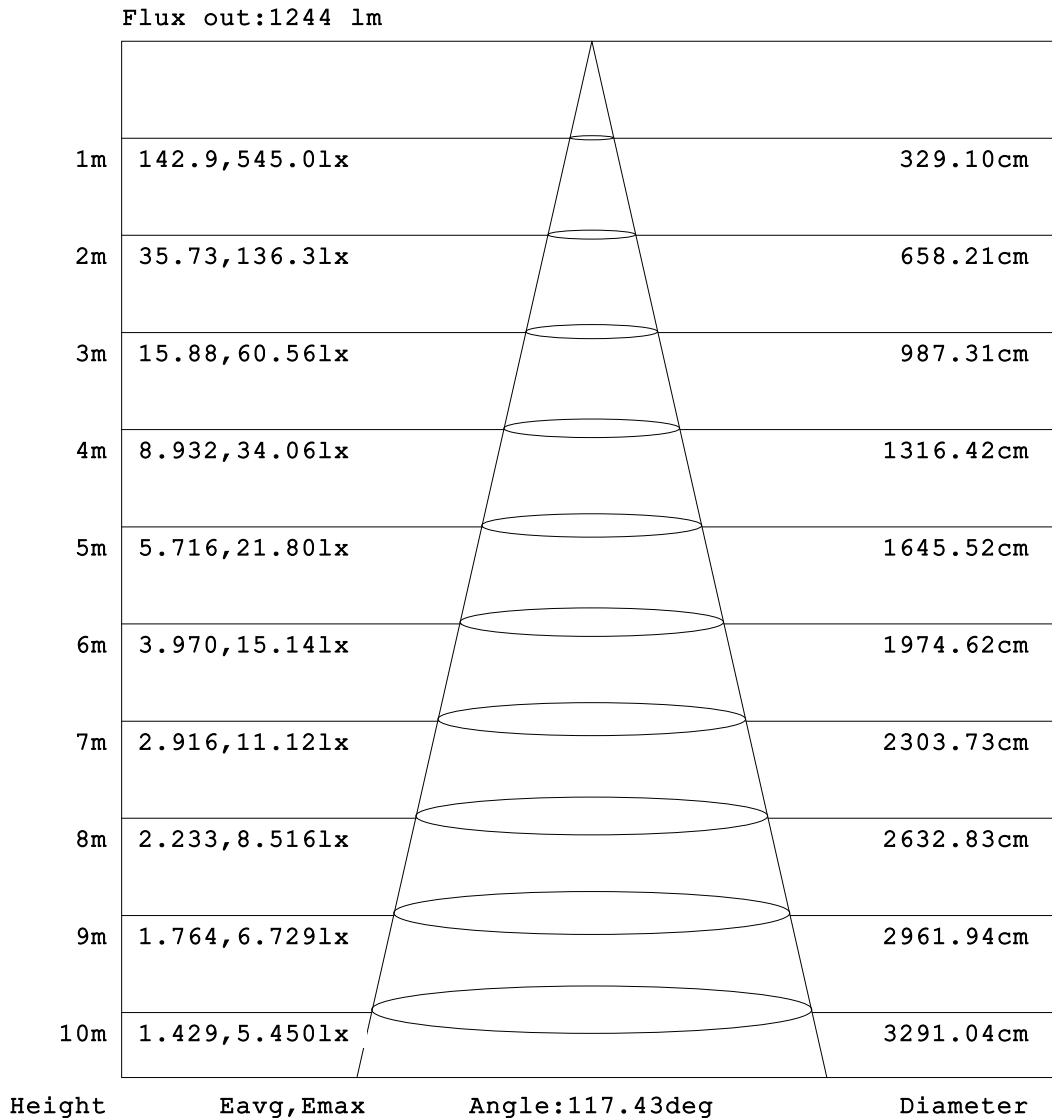
ISOCANDELA DIAGRAM



C Range: 0 - 360DEG
 C Interval: 15.0DEG
 Test Speed: HIGH
 Temperature: 25.3°C
 Operators: DAMIN
 Test Date: 2023-11-24

γ Range: 0 - 180DEG
 γ Interval: 1.0DEG
 Test System: EVERFINE GO-2000B_V1 SYSTEM V2.00.471
 Humidity: 65.0%
 Test Distance: 4.880m [K=1.0000]
 Remarks:

AAI Figure

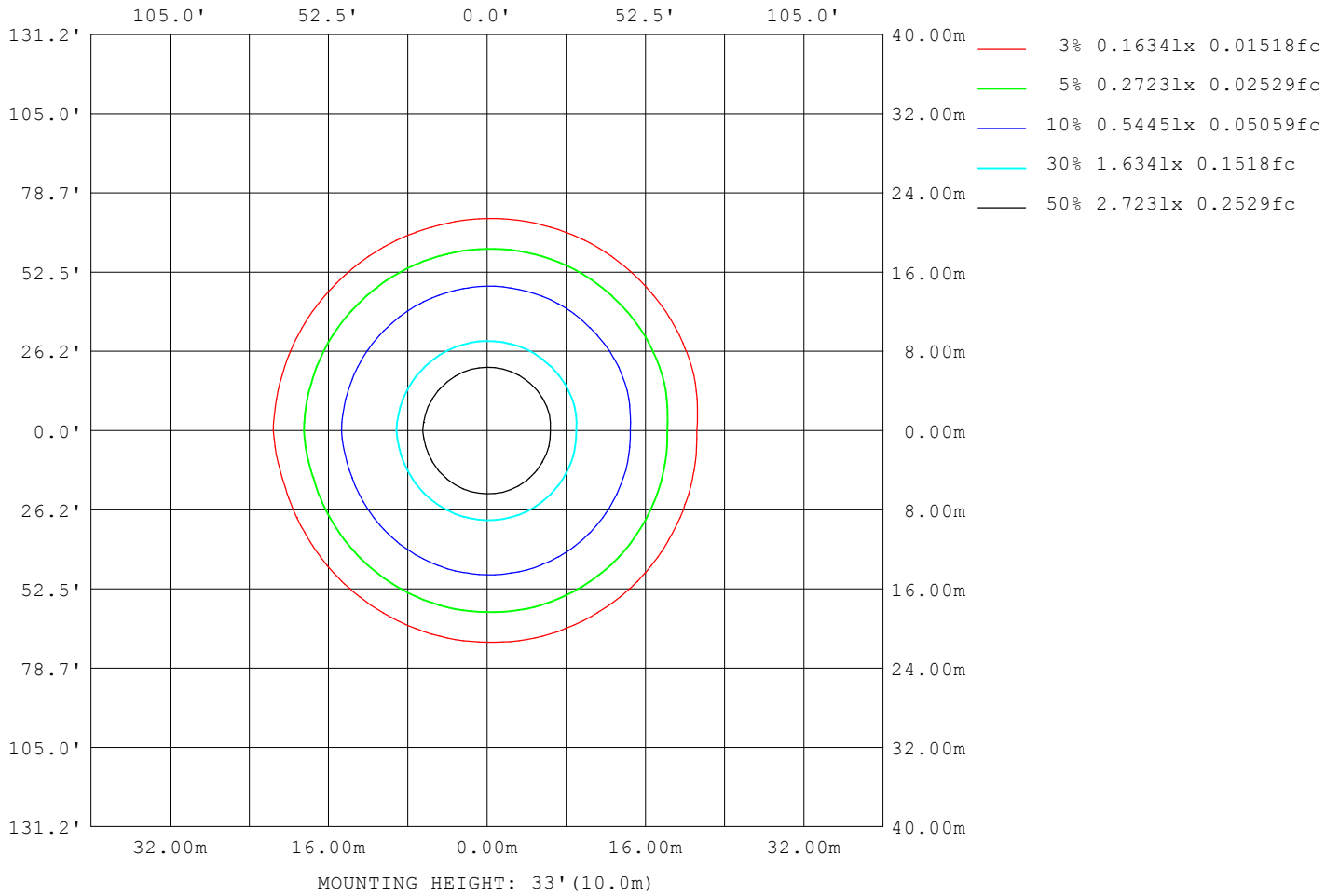


Note:The Curves indicate the illuminated area and the average illumination when the luminaire is at different distance.

C Range: 0 - 360DEG
 C Interval: 15.0DEG
 Test Speed: HIGH
 Temperature:25.3°C
 Operators:DAMIN
 Test Date:2023-11-24

γ Range: 0 - 180DEG
 γ Interval: 1.0DEG
 Test System:EVERFINE GO-2000B_V1 SYSTEM V2.00.471
 Humidity:65.0%
 Test Distance:4.880m [K=1.0000]
 Remarks:

ISOLUX DIAGRAM



C Range: 0 - 360DEG
 C Interval: 15.0DEG
 Test Speed: HIGH
 Temperature: 25.3°C
 Operators: DAMIN
 Test Date: 2023-11-24

γ Range: 0 - 180DEG
 γ Interval: 1.0DEG
 Test System: EVERFINE GO-2000B_V1 SYSTEM V2.00.471
 Humidity: 65.0%
 Test Distance: 4.880m [K=1.0000]
 Remarks:

LED Avg.L Report

NAME: LED Strip	TYPE: Indoor lighting	WEIGHT: 20g
SPEC.: 2835 140LED	DIM.: 500*10*1.2MM	SERIAL No.: 20231123007
MFR.: EVERFINE	SUR.: 500*10MM	Shielding Angle:

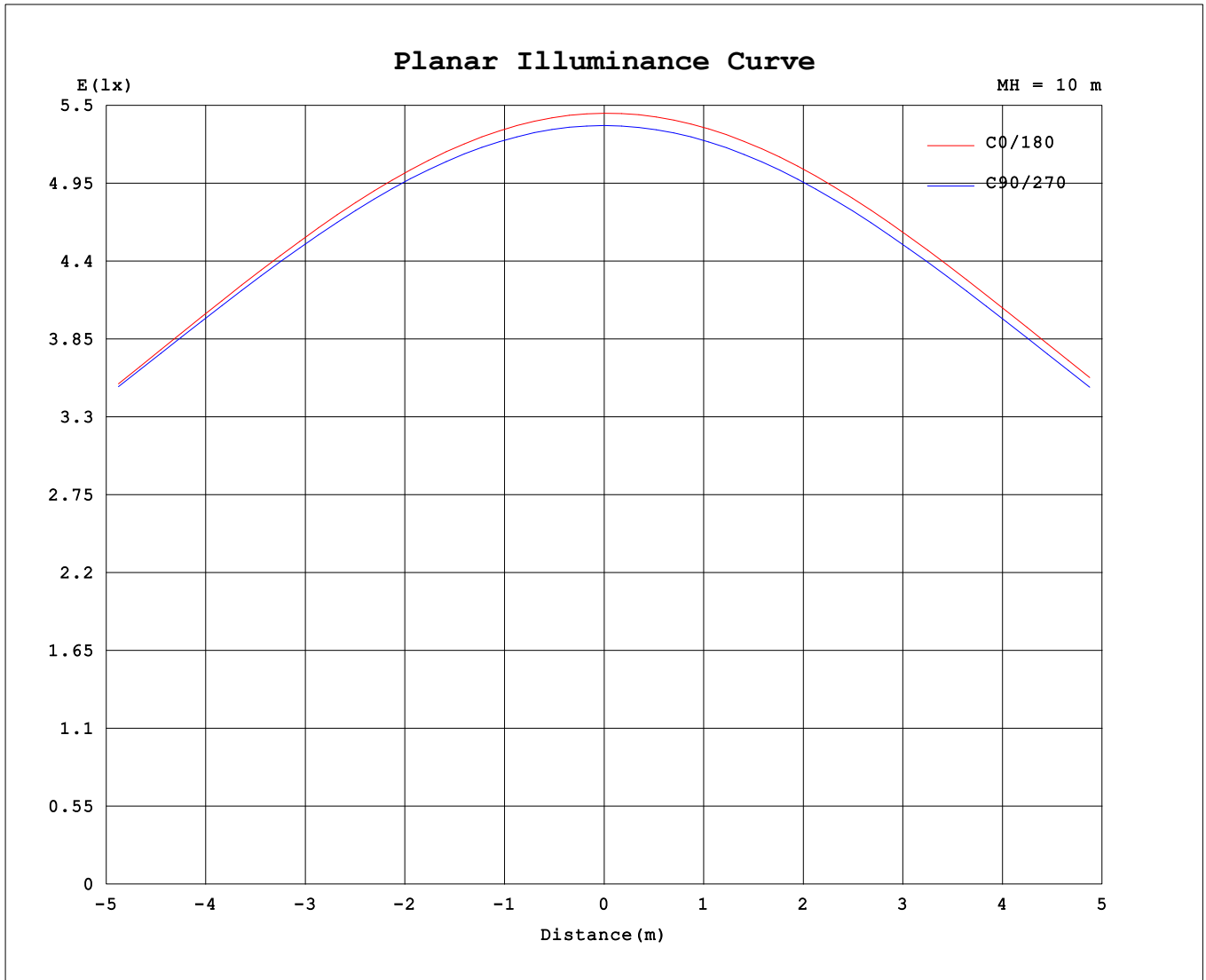
AvgL	cd/m2
L_0~180 (65) av	50621
L_0~180 (75) av	44320
L_0~180 (85) av	30020
L_90~270 (65) av	50672
L_90~270 (75) av	44380
L_90~270 (85) av	30535
L_45 (65) av	50684
L_45 (75) av	44550
L_45 (85) av	30972

Standard: GB/T 29293-2012

C Range: 0 - 360DEG
 C Interval: 15.0DEG
 Test Speed: HIGH
 Temperature:25.3°C
 Operators:DAMIN
 Test Date:2023-11-24

γ Range: 0 - 180DEG
 γ Interval: 1.0DEG
 Test System:EVERFINE GO-2000B_V1 SYSTEM V2.00.471
 Humidity:65.0%
 Test Distance:4.880m [K=1.0000]
 Remarks:

Planar Illuminance Curve



C Range: 0 - 360DEG
 C Interval: 15.0DEG
 Test Speed: HIGH
 Temperature: 25.3°C
 Operators: DAMIN
 Test Date: 2023-11-24

γ Range: 0 - 180DEG
 γ Interval: 1.0DEG
 Test System: EVERFINE GO-2000B_V1 SYSTEM V2.00.471
 Humidity: 65.0%
 Test Distance: 4.880m [K=1.0000]
 Remarks:

LUMINOUS DISTRIBUTION INTENSITY DATA

Table--1

UNIT: cd

C (DEG) \ γ (DEG)	0	15	30	45	60	75	90	105	120	135	150	165	180	195	210	225	240	255	270
0	545	543	539	537	537	537	536	536	537	538	541	545	545	543	539	537	537	537	536
5	542	541	537	536	536	536	534	534	534	536	538	542	543	541	536	535	535	535	534
10	535	535	532	531	531	530	528	528	528	529	531	535	538	534	530	528	529	529	528
15	525	525	522	522	522	521	519	518	518	519	521	524	528	524	520	518	519	518	518
20	510	511	509	509	508	508	505	504	504	504	506	509	515	510	506	504	505	505	505
25	491	494	492	492	492	491	488	487	485	486	487	490	497	492	488	486	487	487	487
30	468	472	471	471	471	470	467	465	464	464	465	467	475	470	467	464	465	465	466
35	442	446	446	447	446	446	442	440	438	439	438	441	450	444	441	438	439	440	441
40	412	416	417	418	418	417	413	411	409	409	408	411	421	415	412	409	410	411	413
45	378	382	384	386	386	385	380	379	376	375	374	377	388	382	379	376	377	378	380
50	340	345	347	350	350	349	344	342	339	338	336	339	351	346	343	340	340	341	344
55	299	304	307	310	310	309	304	302	298	297	295	298	311	305	303	299	300	301	304
60	255	259	263	266	266	265	260	258	254	253	251	253	267	262	259	256	256	257	261
65	207	212	215	219	219	218	214	211	207	205	204	206	221	216	213	210	210	210	215
70	158	163	166	169	169	169	164	162	158	156	155	157	172	167	164	161	161	162	166
75	108	112	115	118	119	118	114	112	108	107	105	107	122	117	115	112	112	112	116
80	60.1	63.9	66.8	70.0	70.0	69.1	65.8	64.1	60.9	59.7	58.2	59.6	73.2	69.5	67.5	64.9	64.8	64.8	67.7
85	21.3	24.3	26.3	28.8	29.0	28.7	26.0	25.2	22.8	22.0	20.4	21.4	31.1	28.1	27.3	25.4	25.8	25.2	27.2
90	2.60	3.25	4.06	5.17	5.36	4.47	2.48	3.65	3.88	3.58	3.09	2.97	4.83	4.05	4.35	4.22	4.56	3.95	3.82
95	1.81	1.91	1.81	1.78	1.83	1.77	1.75	1.89	1.89	1.82	1.80	1.90	2.13	2.19	1.98	1.81	1.86	1.90	1.84
100	1.85	1.84	1.84	1.85	1.86	1.87	1.88	1.93	1.92	1.90	1.89	1.91	1.87	1.89	1.93	1.96	1.99	2.00	1.98
105	2.15	2.13	2.12	2.12	2.13	2.15	2.19	2.20	2.20	2.20	2.19	2.18	2.17	2.21	2.24	2.28	2.30	2.32	2.31
110	2.49	2.47	2.45	2.46	2.47	2.51	2.56	2.55	2.54	2.54	2.52	2.52	2.52	2.55	2.59	2.63	2.65	2.68	2.69
115	2.82	2.80	2.79	2.80	2.82	2.86	2.92	2.90	2.89	2.88	2.86	2.85	2.86	2.89	2.93	2.97	3.01	3.04	3.05
120	3.15	3.13	3.13	3.14	3.16	3.21	3.27	3.25	3.23	3.21	3.19	3.17	3.19	3.23	3.27	3.31	3.35	3.39	3.41
125	3.48	3.46	3.47	3.48	3.50	3.56	3.61	3.59	3.57	3.54	3.52	3.50	3.52	3.56	3.60	3.65	3.69	3.73	3.75
130	3.81	3.80	3.81	3.82	3.84	3.90	3.95	3.94	3.91	3.89	3.86	3.84	3.85	3.89	3.93	3.98	4.03	4.07	4.08
135	4.14	4.15	4.15	4.16	4.19	4.24	4.29	4.27	4.24	4.22	4.20	4.18	4.17	4.21	4.25	4.30	4.35	4.40	4.40
140	4.46	4.49	4.48	4.50	4.52	4.56	4.61	4.60	4.57	4.55	4.52	4.52	4.49	4.53	4.56	4.62	4.66	4.70	4.71
145	4.77	4.82	4.81	4.82	4.83	4.88	4.91	4.91	4.88	4.86	4.83	4.82	4.80	4.83	4.87	4.92	4.96	5.00	5.00
150	5.08	5.14	5.13	5.13	5.14	5.18	5.21	5.21	5.19	5.16	5.13	5.12	5.10	5.12	5.16	5.21	5.25	5.28	5.28
155	5.39	5.43	5.42	5.42	5.42	5.45	5.48	5.49	5.46	5.45	5.42	5.42	5.39	5.40	5.43	5.47	5.51	5.53	5.53
160	5.69	5.71	5.69	5.68	5.68	5.71	5.73	5.75	5.73	5.72	5.69	5.70	5.69	5.66	5.69	5.73	5.76	5.77	5.77
165	5.98	5.97	5.94	5.93	5.93	5.94	5.95	5.97	5.96	5.96	5.95	5.97	5.97	5.91	5.94	5.96	5.99	5.99	5.99
170	6.21	6.20	6.15	6.15	6.14	6.16	6.16	6.17	6.16	6.16	6.17	6.21	6.21	6.13	6.15	6.17	6.19	6.19	6.18
175	6.39	6.37	6.32	6.33	6.31	6.33	6.32	6.33	6.33	6.33	6.33	6.40	6.39	6.32	6.33	6.33	6.34	6.33	6.34
180	6.50	6.44	6.42	6.42	6.42	6.43	6.42	6.42	6.42	6.42	6.43	6.49	6.50	6.43	6.43	6.42	6.42	6.42	6.42

C Range: 0 - 360DEG
 C Interval: 15.0DEG
 Test Speed: HIGH
 Temperature:25.3°C
 Operators:DAMIN
 Test Date:2023-11-24

γ Range: 0 - 180DEG
 γ Interval: 1.0DEG
 Test System:EVERFINE GO-2000B_V1 SYSTEM V2.00.471
 Humidity:65.0%
 Test Distance:4.880m [K=1.0000]
 Remarks:

LUMINOUS DISTRIBUTION INTENSITY DATA

Table--2

UNIT: cd

C (DEG) \ γ (DEG)	285	300	315	330	345														
0	536	537	538	541	545														
5	534	536	537	540	544														
10	529	530	532	536	539														
15	519	521	523	527	530														
20	506	508	510	514	516														
25	489	491	494	497	499														
30	468	471	473	476	478														
35	443	447	449	452	452														
40	415	419	420	423	423														
45	383	387	388	391	390														
50	347	351	352	355	354														
55	307	312	313	315	313														
60	264	269	269	272	269														
65	218	222	223	225	223														
70	169	173	174	176	173														
75	119	123	124	125	121														
80	69.4	73.0	74.1	75.2	72.1														
85	27.9	31.2	31.8	32.1	22.6														
90	4.51	5.76	4.95	3.71	4.47														
95	1.85	1.81	1.99	2.32	2.18														
100	1.96	1.93	1.90	1.88	1.89														
105	2.27	2.23	2.20	2.18	2.21														
110	2.63	2.58	2.54	2.52	2.56														
115	2.99	2.93	2.89	2.86	2.90														
120	3.34	3.27	3.23	3.20	3.23														
125	3.68	3.61	3.56	3.54	3.56														
130	4.01	3.94	3.89	3.87	3.89														
135	4.34	4.27	4.22	4.20	4.22														
140	4.65	4.59	4.55	4.52	4.56														
145	4.95	4.89	4.85	4.83	4.87														
150	5.23	5.19	5.15	5.14	5.18														
155	5.49	5.45	5.43	5.43	5.47														
160	5.73	5.70	5.68	5.69	5.74														
165	5.96	5.94	5.92	5.94	6.00														
170	6.16	6.15	6.14	6.16	6.22														
175	6.32	6.32	6.31	6.34	6.40														
180	6.42	6.42	6.42	6.43	6.49														

C Range: 0 - 360DEG
 C Interval: 15.0DEG
 Test Speed: HIGH
 Temperature:25.3°C
 Operators:DAMIN
 Test Date:2023-11-24

γ Range: 0 - 180DEG
 γ Interval: 1.0DEG
 Test System:EVERFINE GO-2000B_V1 SYSTEM V2.00.471
 Humidity:65.0%
 Test Distance:4.880m [K=1.0000]
 Remarks: