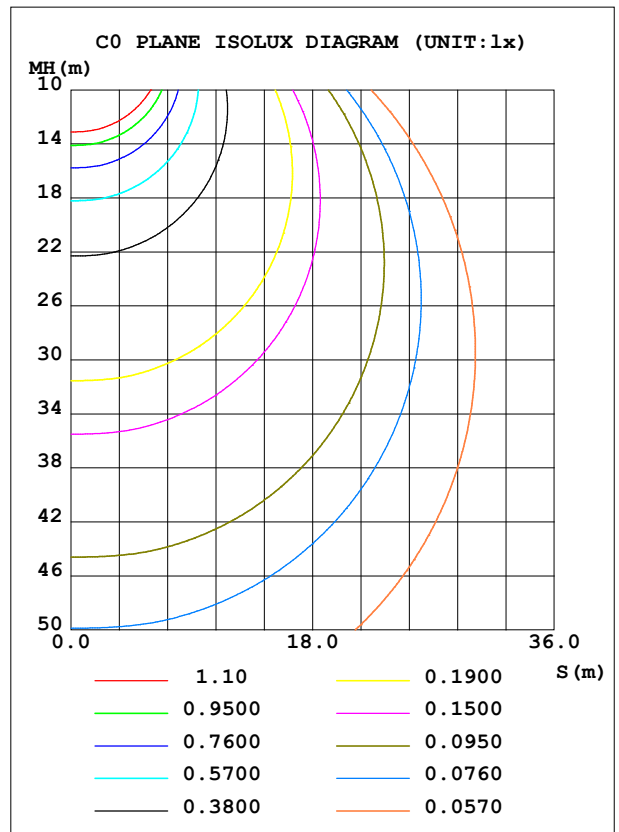
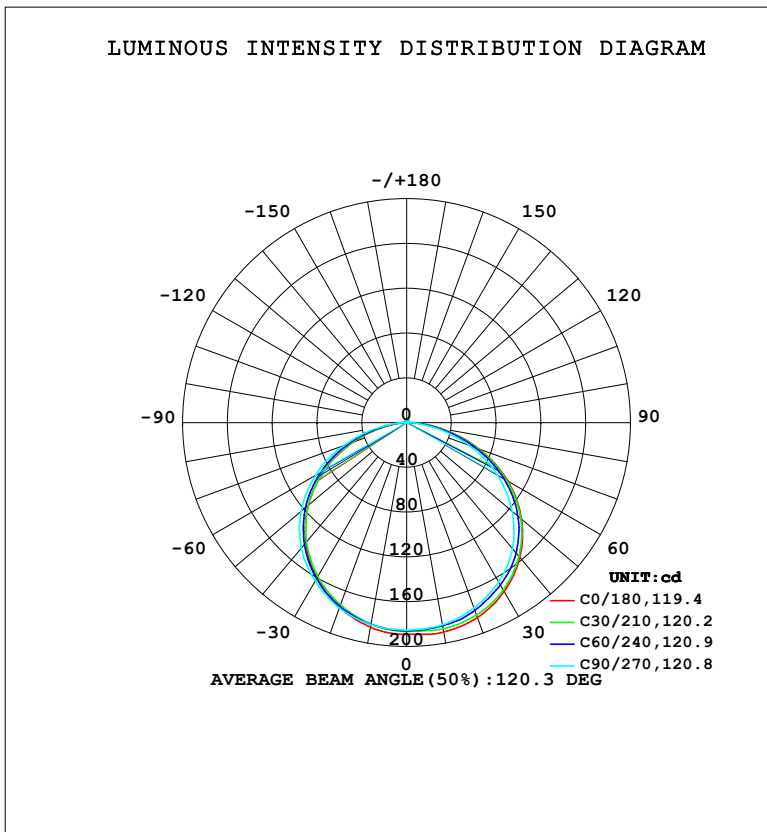


LUMINAIRE PHOTOMETRIC TEST REPORT

NAME: LED Strip	TYPE: Indoor lighting	WEIGHT: 75g
SPEC.: 2835 160LED	DIM.: 500*10*1.2MM	SERIAL No.: 20240620001
MFR.: EVERFINE	SUR.: 500*10MM	Shielding Angle:

DATA OF LAMP		PHOTOMETRIC DATA			
LS102T28WMSDELB-24 (WCP) -UR-RHY-EP SW		Imax (cd)	190.2	S/MH (C0/180)	1.26
NOMINAL POWER (W)	4.39104	LOR (%)	100.0	S/MH (C90/270)	1.31
RATED VOLTAGE (V)	DC 24V	TOTAL FLUX (lm)	591.88	η UP, DN (C0-180)	0.7,49.6
NOMINAL FLUX (lm)	591.88	CIE CLASS	DIRECT	η UP, DN (C180-360)	0.7,49.0
LAMPS INSIDE	1	η up (%)	1.4	CIBSE SHR NOM	1.50
TEST VOLTAGE (V)	DC 24V	η down (%)	98.6	CIBSE SHR MAX	1.50



C Range: 0 - 360DEG
 C Interval: 15.0DEG
 Test Speed: HIGH
 Temperature: 25.3°C
 Operators: DAMIN
 Test Date: 2024-06-21

γ Range: 0 - 180DEG
 γ Interval: 1.0DEG
 Test System: EVERFINE GO-2000B_V1 SYSTEM V2.00.471
 Humidity: 65.0%
 Test Distance: 4.880m [K=1.0000]
 Remarks:

ZONAL FLUX DIAGRAM

ZONAL FLUX DIAGRAM:

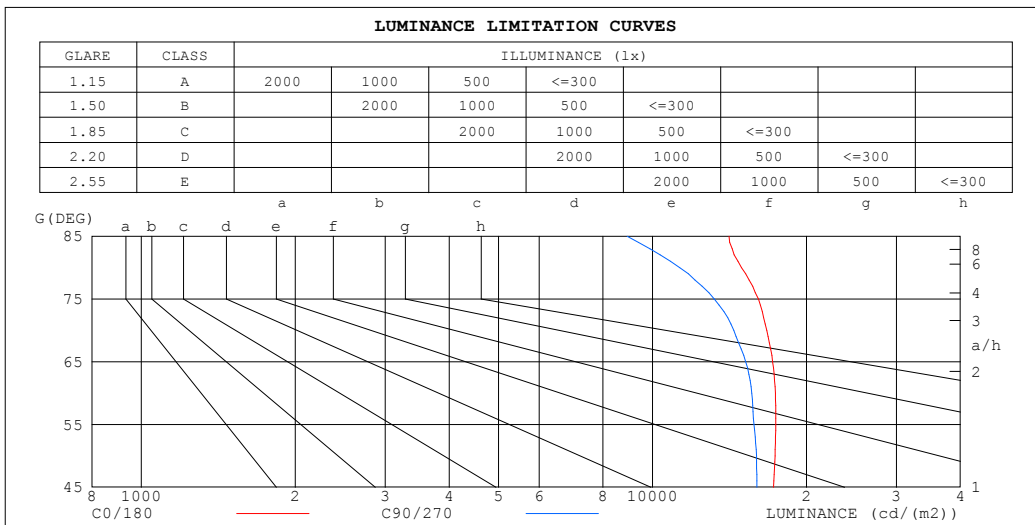
γ	C0	C45	C90	C135	C180	C225	C270	C315	γ	Φ zone	Φ total	%lum,lamp
10	189.9	185.6	183.3	183.1	185.6	182.5	183.2	185.6	0- 10	17.74	17.74	3,3
20	185.1	181.2	176.2	174.1	175.4	173.2	176.1	181.1	10- 20	51.41	69.16	11.7,11.7
30	174.2	170.6	164.3	160.2	160.3	159.1	163.3	170.8	20- 30	79.40	148.6	25.1,25.1
40	157.2	154.3	146.9	141.0	140.0	139.9	146.4	154.2	30- 40	98.30	246.9	41.7,41.7
50	133.9	131.5	123.2	116.3	114.7	115.5	123.2	131.1	40- 50	105.2	352.0	59.5,59.5
60	104.3	102.0	93.87	86.25	84.56	86.20	93.75	101.3	50- 60	97.98	450.0	76,76
70	68.65	67.19	59.22	52.06	50.64	52.80	59.57	67.25	60- 70	76.61	526.6	89,89
80	31.13	30.18	23.57	18.96	17.96	19.38	24.74	30.47	70- 80	44.30	570.9	96.5,96.5
90	3.710	3.452	1.259	1.596	1.437	1.581	1.551	3.634	80- 90	12.46	583.4	98.6,98.6
100	0.7710	0.7147	0.6728	1.160	0.9397	1.331	0.7114	0.7310	90-100	1.268	584.6	98.8,98.8
110	0.8239	0.8639	0.8948	1.635	1.438	1.408	0.9455	0.8938	100-110	1.053	585.7	99,99
120	1.042	1.079	1.140	1.236	1.592	1.271	1.191	1.111	110-120	1.141	586.8	99.1,99.1
130	1.257	1.300	1.373	1.403	1.490	1.438	1.423	1.331	120-130	1.148	588.0	99.3,99.3
140	1.484	1.538	1.600	1.626	1.667	1.655	1.643	1.561	130-140	1.150	589.1	99.5,99.5
150	1.712	1.761	1.810	1.834	1.865	1.853	1.842	1.775	140-150	1.067	590.2	99.7,99.7
160	1.940	1.962	1.993	2.016	2.054	2.024	2.019	1.960	150-160	0.8783	591.1	99.9,99.9
170	2.137	2.134	2.149	2.170	2.208	2.168	2.165	2.129	160-170	0.5865	591.7	100,100
180	2.266	2.243	2.243	2.241	2.268	2.241	2.242	2.243	170-180	0.2093	591.9	100,100
DEG	LUMINOUS INTENSITY:cd									UNIT:lm		

C Range: 0 - 360DEG
 C Interval: 15.0DEG
 Test Speed: HIGH
 Temperature:25.3°C
 Operators:DAMIN
 Test Date:2024-06-21

γ Range: 0 - 180DEG
 γ Interval: 1.0DEG
 Test System:EVERFINE GO-2000B_V1 SYSTEM V2.00.471
 Humidity:65.0%
 Test Distance:4.880m [K=1.0000]
 Remarks:

LUMINANCE LIMITATION CURVES

NAME: LED Strip	TYPE: Indoor lighting	WEIGHT: 75g
SPEC.: 2835 160LED	DIM.: 500*12*1.9MM	SERIAL No.: 20240620001
MFR.: EVERFINE	SUR.: 500*12MM	Shielding Angle:



LUMINANCE cd/(m2)		
G (DEG)	C0/180	C90/270
85	14103	8925
80	14938	11309
75	16106	13208
70	16727	14428
65	17177	15207
60	17383	15645
55	17420	15796
50	17357	15966
45	17244	15992

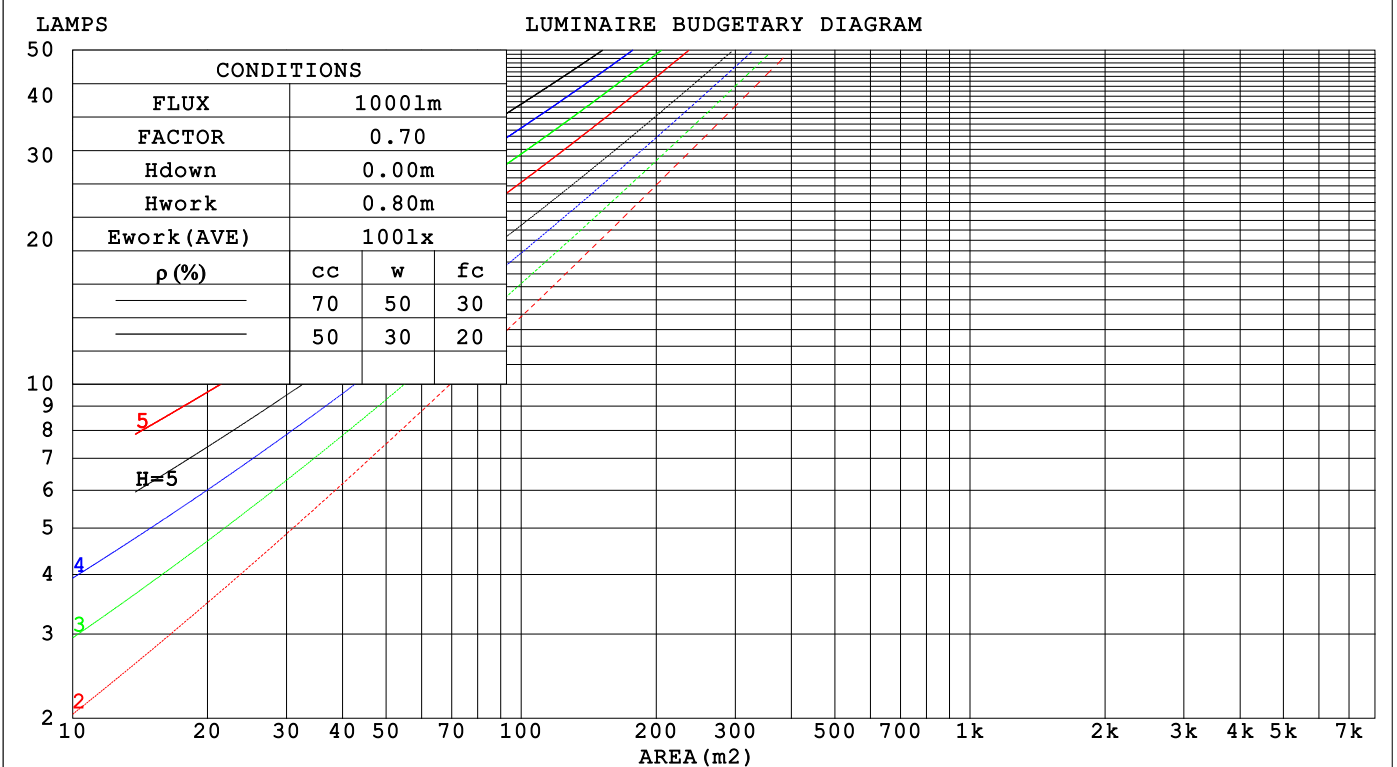
C Range: 0 - 360DEG
 C Interval: 15.0DEG
 Test Speed: HIGH
 Temperature: 25.3°C
 Operators: DAMIN
 Test Date: 2024-06-21

γ Range: 0 - 180DEG
 γ Interval: 1.0DEG
 Test System: EVERFINE GO-2000B_V1 SYSTEM V2.00.471
 Humidity: 65.0%
 Test Distance: 4.880m [K=1.0000]
 Remarks:

CU AND LUMINAIRE BUDGETARY ESTIMATE DIAGRAM

NAME: LED Strip	TYPE: Indoor lighting	WEIGHT: 75g
SPEC.: 2835 160LED	DIM.: 500*12*1.9MM	SERIAL No.: 20240620001
MFR.: EVERFINE	SUR.: 500*12MM	Shielding Angle:

pcc	80%			70%			50%			30%			10%			0
pw	50%	30%	10%	50%	30%	10%	50%	30%	10%	50%	30%	10%	50%	30%	10%	0
pfc	20%			20%			20%			20%			20%			0
RCR	RCR:Room Cavity Ratio															
	Coefficients of Utilization(CU)															
0.0	1.19	1.19	1.19	1.16	1.16	1.16	1.10	1.10	1.10	1.05	1.05	1.05	1.01	1.01	1.01	.99
1.0	1.03	.99	.95	1.01	.97	.93	.96	.93	.90	.92	.89	.87	.88	.86	.84	.82
2.0	.89	.82	.76	.87	.81	.75	.84	.78	.73	.80	.76	.72	.77	.73	.70	.67
3.0	.78	.70	.63	.76	.69	.62	.73	.67	.61	.70	.65	.60	.67	.63	.59	.56
4.0	.69	.60	.53	.68	.59	.53	.65	.58	.52	.62	.56	.51	.60	.55	.50	.48
5.0	.61	.52	.45	.60	.52	.45	.58	.50	.44	.56	.49	.44	.54	.48	.43	.41
6.0	.55	.46	.39	.54	.45	.39	.52	.44	.39	.50	.43	.38	.49	.43	.38	.36
7.0	.50	.41	.35	.49	.41	.35	.47	.40	.34	.46	.39	.34	.44	.38	.33	.31
8.0	.45	.37	.31	.45	.36	.31	.43	.36	.30	.42	.35	.30	.41	.34	.30	.28
9.0	.42	.33	.28	.41	.33	.28	.40	.32	.27	.38	.32	.27	.37	.31	.27	.25
10.0	.38	.30	.25	.38	.30	.25	.37	.30	.25	.36	.29	.24	.35	.29	.24	.23



C Range: 0 - 360DEG
 C Interval: 15.0DEG
 Test Speed: HIGH
 Temperature: 25.3°C
 Operators: DAMIN
 Test Date: 2024-06-21

γ Range: 0 - 180DEG
 γ Interval: 1.0DEG
 Test System: EVERFINE GO-2000B_V1 SYSTEM V2.00.471
 Humidity: 65.0%
 Test Distance: 4.880m [K=1.0000]
 Remarks:

WEC AND CCEC

NAME: LED Strip	TYPE: Indoor lighting	WEIGHT: 75g
SPEC.: 2835 160LED	DIM.: 500*12*1.9MM	SERIAL No.: 20240620001
MFR.: EVERFINE	SUR.: 500*12MM	Shielding Angle:

ρ_{CC}	80%			70%			50%			30%			10%			0
ρ_w	50%	30%	10%	50%	30%	10%	50%	30%	10%	50%	30%	10%	50%	30%	10%	0
ρ_{fc}	20%			20%			20%			20%			20%			0
RCR	RCR:Room Cavity Ratio						Wall Exitance Coefficients(WEC)									
0.0																
1.0	.318	.181	.057	.311	.177	.056	.297	.170	.054	.284	.164	.052	.272	.157	.051	
2.0	.298	.164	.050	.292	.161	.050	.279	.155	.048	.268	.150	.047	.257	.145	.046	
3.0	.275	.147	.044	.270	.144	.043	.258	.140	.043	.248	.136	.042	.239	.132	.041	
4.0	.254	.132	.039	.248	.130	.038	.239	.127	.038	.229	.123	.037	.221	.120	.037	
5.0	.234	.119	.035	.229	.118	.034	.221	.115	.034	.212	.112	.033	.205	.109	.033	
6.0	.217	.109	.031	.213	.107	.031	.205	.105	.031	.197	.103	.030	.190	.100	.030	
7.0	.201	.100	.028	.198	.099	.028	.191	.096	.028	.184	.094	.027	.178	.092	.027	
8.0	.188	.092	.026	.185	.091	.026	.178	.089	.025	.172	.087	.025	.167	.086	.025	
9.0	.176	.085	.024	.173	.084	.024	.167	.083	.023	.162	.081	.023	.157	.080	.023	
10.0	.165	.079	.022	.163	.079	.022	.157	.077	.022	.152	.076	.022	.148	.074	.021	

ρ_{CC}	80%			70%			50%			30%			10%			0
ρ_w	50%	30%	10%	50%	30%	10%	50%	30%	10%	50%	30%	10%	50%	30%	10%	0
ρ_{fc}	20%			20%			20%			20%			20%			0
RCR	RCR:Room Cavity Ratio						Ceiling Cavity Exitance Coefficients(CCEC)									
0.0	.201	.201	.201	.172	.172	.172	.117	.117	.117	.067	.067	.067	.022	.022	.022	
1.0	.192	.167	.145	.164	.143	.125	.112	.099	.086	.065	.057	.050	.021	.018	.016	
2.0	.184	.143	.108	.158	.123	.094	.108	.085	.065	.062	.050	.038	.020	.016	.012	
3.0	.177	.126	.085	.151	.108	.073	.104	.075	.052	.060	.044	.030	.019	.014	.010	
4.0	.169	.112	.069	.145	.097	.060	.100	.068	.042	.058	.040	.025	.019	.013	.008	
5.0	.162	.102	.058	.139	.088	.050	.096	.062	.036	.055	.036	.021	.018	.012	.007	
6.0	.155	.094	.050	.133	.081	.044	.092	.057	.031	.053	.033	.018	.017	.011	.006	
7.0	.148	.087	.044	.127	.075	.038	.088	.053	.027	.051	.031	.016	.016	.010	.005	
8.0	.141	.081	.040	.122	.070	.035	.084	.049	.025	.049	.029	.015	.016	.010	.005	
9.0	.135	.076	.036	.116	.066	.032	.081	.046	.022	.047	.027	.013	.015	.009	.004	
10.0	.129	.072	.034	.111	.062	.029	.077	.044	.021	.045	.026	.012	.015	.009	.004	

C Range: 0 - 360DEG
 C Interval: 15.0DEG
 Test Speed: HIGH
 Temperature:25.3°C
 Operators:DAMIN
 Test Date:2024-06-21

γ Range: 0 - 180DEG
 γ Interval: 1.0DEG
 Test System:EVERFINE GO-2000B_V1 SYSTEM V2.00.471
 Humidity:65.0%
 Test Distance:4.880m [K=1.0000]
 Remarks:

UGR(Unified Glare Rating) Table

NAME: LED Strip		TYPE: Indoor lighting				WEIGHT: 75g					
SPEC.: 2835 160LED		DIM.: 500*12*1.9MM				SERIAL No.: 20240620001					
MFR.: EVERFINE		SUR.: 500*12MM				Shielding Angle:					
ceiling/cavity		0.7	0.7	0.5	0.5	0.3	0.7	0.7	0.5	0.5	0.3
walls		0.5	0.3	0.5	0.3	0.3	0.5	0.3	0.5	0.3	0.3
working plane		0.2	0.2	0.2	0.2	0.2	0.2	0.2	0.2	0.2	0.2
Room dimensions		Viewed crosswise					Viewed endwise				
x = 2H y = 2H		25.0	26.5	25.3	26.7	27.0	24.6	26.1	24.9	26.3	26.6
	3H	26.7	28.1	27.0	28.4	28.7	26.2	27.6	26.5	27.8	28.1
	4H	27.4	28.8	27.8	29.1	29.3	26.8	28.1	27.1	28.4	28.7
	6H	28.0	29.2	28.3	29.5	29.8	27.2	28.4	27.5	28.7	29.1
	8H	28.1	29.4	28.5	29.7	30.0	27.3	28.5	27.6	28.8	29.1
	12H	28.3	29.4	28.6	29.8	30.1	27.3	28.5	27.7	28.8	29.2
	4H 2H	25.6	27.0	26.0	27.2	27.5	25.3	26.7	25.7	26.9	27.2
	3H	27.5	28.7	27.9	29.0	29.4	27.1	28.3	27.5	28.6	28.9
	4H	28.4	29.5	28.8	29.8	30.2	27.8	28.9	28.2	29.3	29.6
	6H	29.1	30.0	29.5	30.4	30.8	28.4	29.3	28.8	29.7	30.1
	8H	29.3	30.2	29.7	30.6	31.0	28.5	29.4	29.0	29.8	30.2
	12H	29.5	30.3	29.9	30.7	31.2	28.6	29.4	29.1	29.8	30.3
	8H 4H	28.7	29.6	29.1	30.0	30.4	28.2	29.1	28.6	29.5	29.9
	6H	29.5	30.3	30.0	30.7	31.1	28.9	29.6	29.3	30.0	30.5
	8H	29.9	30.5	30.3	31.0	31.4	29.1	29.8	29.6	30.2	30.7
	12H	30.1	30.7	30.6	31.2	31.7	29.3	29.9	29.8	30.3	30.8
	12H 4H	28.7	29.5	29.1	29.9	30.4	28.2	29.0	28.7	29.4	29.9
	6H	29.6	30.2	30.1	30.7	31.2	29.0	29.6	29.4	30.1	30.6
	8H	30.0	30.5	30.5	31.0	31.5	29.3	29.8	29.8	30.3	30.8
Variations with the observer position at spacings(CIE Pub.117):											
S = 1.0H		+ 0.1 / - 0.2					+ 0.1 / - 0.2				
1.5H		+ 0.2 / - 0.3					+ 0.2 / - 0.4				
2.0H		+ 0.2 / - 0.4					+ 0.2 / - 0.5				

CIE Pub.117, 591.9 lm Total Lamp Luminous Flux Correct (8log(F/F0) = -1.8)
 Area: 0.012 m2

C Range: 0 - 360DEG
 C Interval: 15.0DEG
 Test Speed: HIGH
 Temperature:25.3°C
 Operators:DAMIN
 Test Date:2024-06-21

γ Range: 0 - 180DEG
 γ Interval: 1.0DEG
 Test System:EVERFINE GO-2000B_V1 SYSTEM V2.00.471
 Humidity:65.0%
 Test Distance:4.880m [K=1.0000]
 Remarks:

UTILIZATION FACTORS TABLE

NAME: LED Strip	TYPE: Indoor lighting	WEIGHT: 75g
SPEC.: 2835 160LED	DIM.: 500*12*1.9MM	SERIAL No.: 20240620001
MFR.: EVERFINE	SUR.: 500*12MM	Shielding Angle:

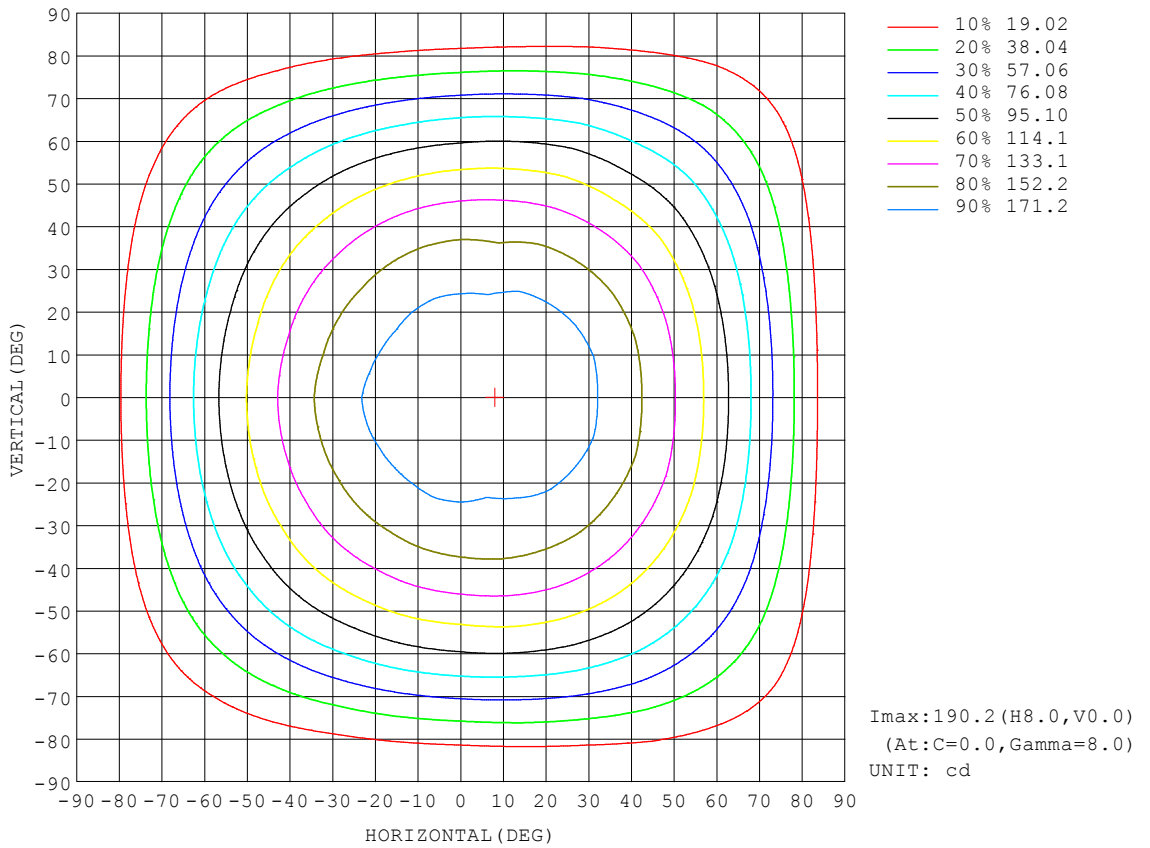
REFLECTANCE										
Ceiling	0.8	0.8	0.8	0.7	0.7	0.7	0.5	0.5	0.5	0
Walls	0.7	0.5	0.3	0.7	0.5	0.3	0.7	0.5	0.3	0
Working plane	0.2	0.2	0.2	0.2	0.2	0.2	0.2	0.2	0.2	0
ROOM INDEX	UTILIZATION FACTORS (PERCENT) $k(RI) \times RCR = 5$									
$k = 0.60$	56	44	37	55	44	37	54	43	37	30
0.80	66	54	46	65	53	46	63	53	46	39
1.00	74	63	55	73	62	55	71	64	54	47
1.25	82	71	63	80	70	63	77	68	62	54
1.50	87	76	69	85	75	69	82	73	67	60
2.00	94	85	78	92	84	77	88	81	76	67
2.50	98	90	83	96	88	82	91	85	80	72
3.00	101	94	88	99	92	87	95	89	85	76
4.00	105	99	95	103	98	93	98	94	90	81
5.00	108	103	99	105	101	97	100	97	94	84
ROOM INDEX	UF(total)									Direct
According to DIN EN 13032-2 2004			Suspended				SHRNOM = 1.25			

C Range: 0 - 360DEG
 C Interval: 15.0DEG
 Test Speed: HIGH
 Temperature: 25.3°C
 Operators: DAMIN
 Test Date: 2024-06-21

γ Range: 0 - 180DEG
 γ Interval: 1.0DEG
 Test System: EVERFINE GO-2000B_V1 SYSTEM V2.00.471
 Humidity: 65.0%
 Test Distance: 4.880m [K=1.0000]
 Remarks:

ISOCANDELA DIAGRAM

NAME: LED Strip	TYPE: Indoor lighting	WEIGHT: 75g
SPEC.: 2835 160LED	DIM.: 500*12*1.9MM	SERIAL No.: 20240620001
MFR.: EVERFINE	SUR.: 500*12MM	Shielding Angle:

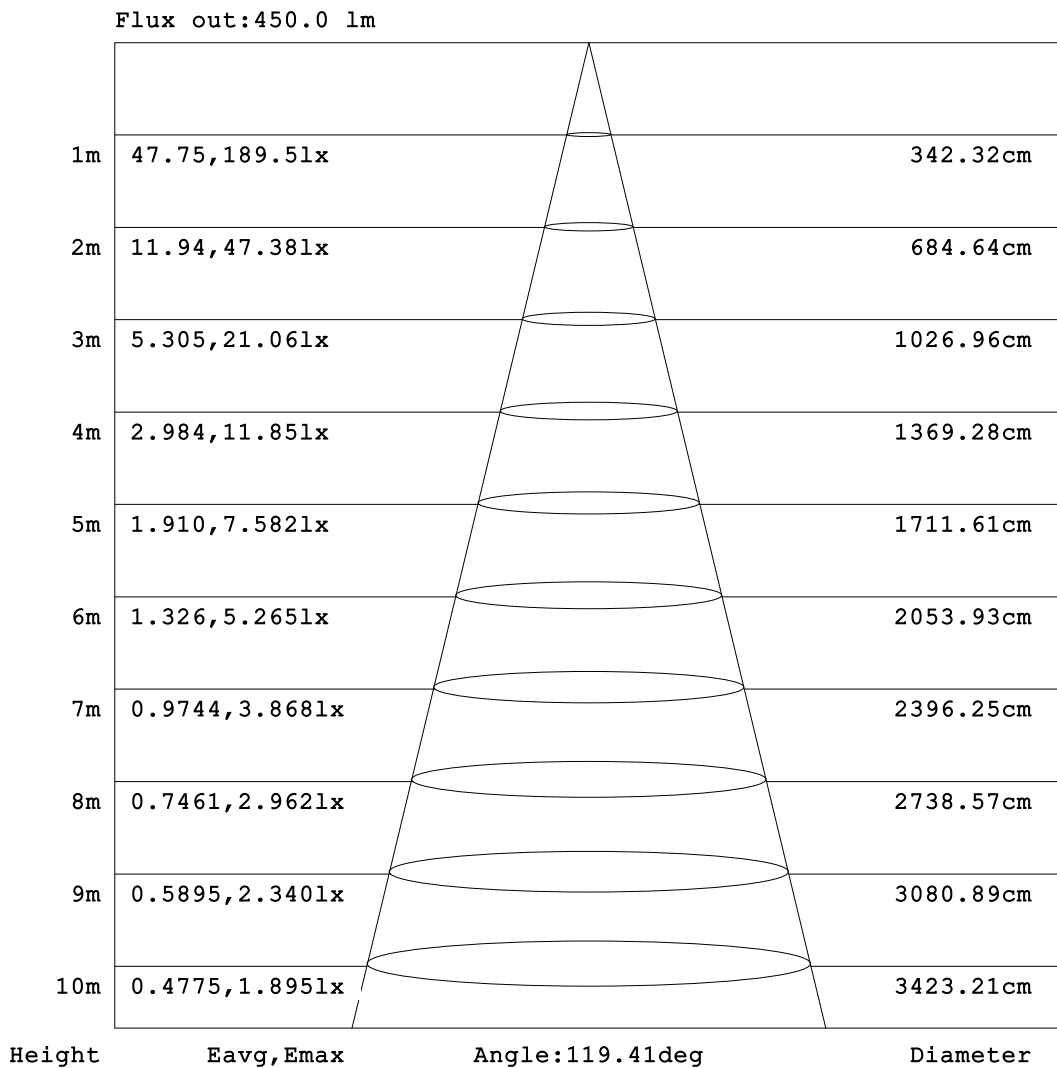


C Range: 0 - 360DEG
 C Interval: 15.0DEG
 Test Speed: HIGH
 Temperature:25.3°C
 Operators:DAMIN
 Test Date:2024-06-21

γ Range: 0 - 180DEG
 γ Interval: 1.0DEG
 Test System:EVERFINE GO-2000B_V1 SYSTEM V2.00.471
 Humidity:65.0%
 Test Distance:4.880m [K=1.0000]
 Remarks:

AAI Figure

NAME: LED Strip	TYPE: Indoor lighting	WEIGHT: 75g
SPEC.: 2835 160LED	DIM.: 500*12*1.9MM	SERIAL No.: 20240620001
MFR.: EVERFINE	SUR.: 500*12MM	Shielding Angle:



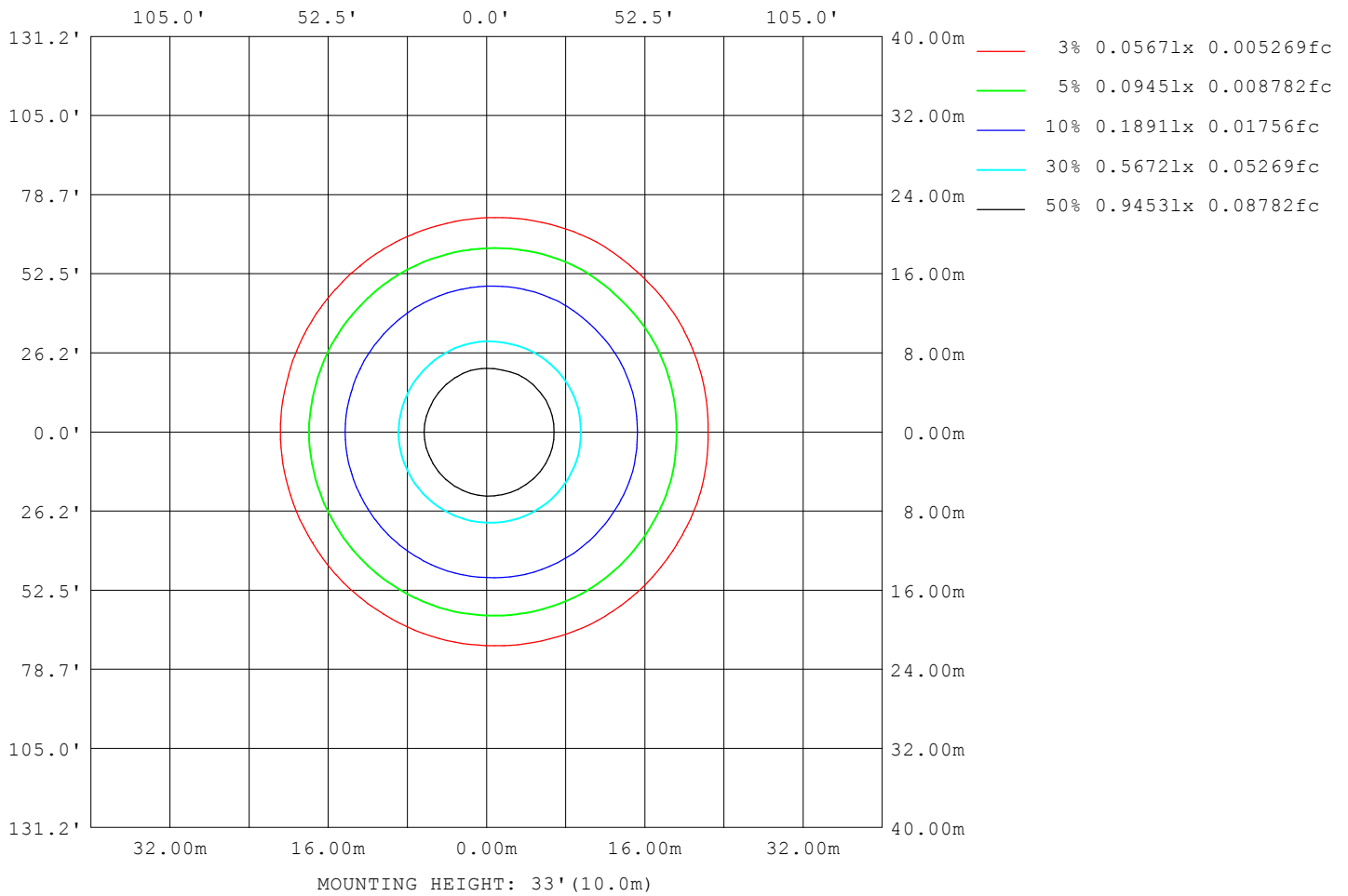
Note: The Curves indicate the illuminated area and the average illumination when the luminaire is at different distance.

C Range: 0 - 360DEG
 C Interval: 15.0DEG
 Test Speed: HIGH
 Temperature: 25.3°C
 Operators: DAMIN
 Test Date: 2024-06-21

γ Range: 0 - 180DEG
 γ Interval: 1.0DEG
 Test System: EVERFINE GO-2000B_V1 SYSTEM V2.00.471
 Humidity: 65.0%
 Test Distance: 4.880m [K=1.0000]
 Remarks:

ISOLUX DIAGRAM

NAME: LED Strip	TYPE: Indoor lighting	WEIGHT: 75g
SPEC.: 2835 160LED	DIM.: 500*12*1.9MM	SERIAL No.: 20240620001
MFR.: EVERFINE	SUR.: 500*12MM	Shielding Angle:



C Range: 0 - 360DEG
 C Interval: 15.0DEG
 Test Speed: HIGH
 Temperature: 25.3°C
 Operators: DAMIN
 Test Date: 2024-06-21

γ Range: 0 - 180DEG
 γ Interval: 1.0DEG
 Test System: EVERFINE GO-2000B_V1 SYSTEM V2.00.471
 Humidity: 65.0%
 Test Distance: 4.880m [K=1.0000]
 Remarks:

LED Avg.L Report

NAME: LED Strip	TYPE: Indoor lighting	WEIGHT: 75g
SPEC.: 2835 160LED	DIM.: 500*12*1.9MM	SERIAL No.: 20240620001
MFR.: EVERFINE	SUR.: 500*12MM	Shielding Angle:

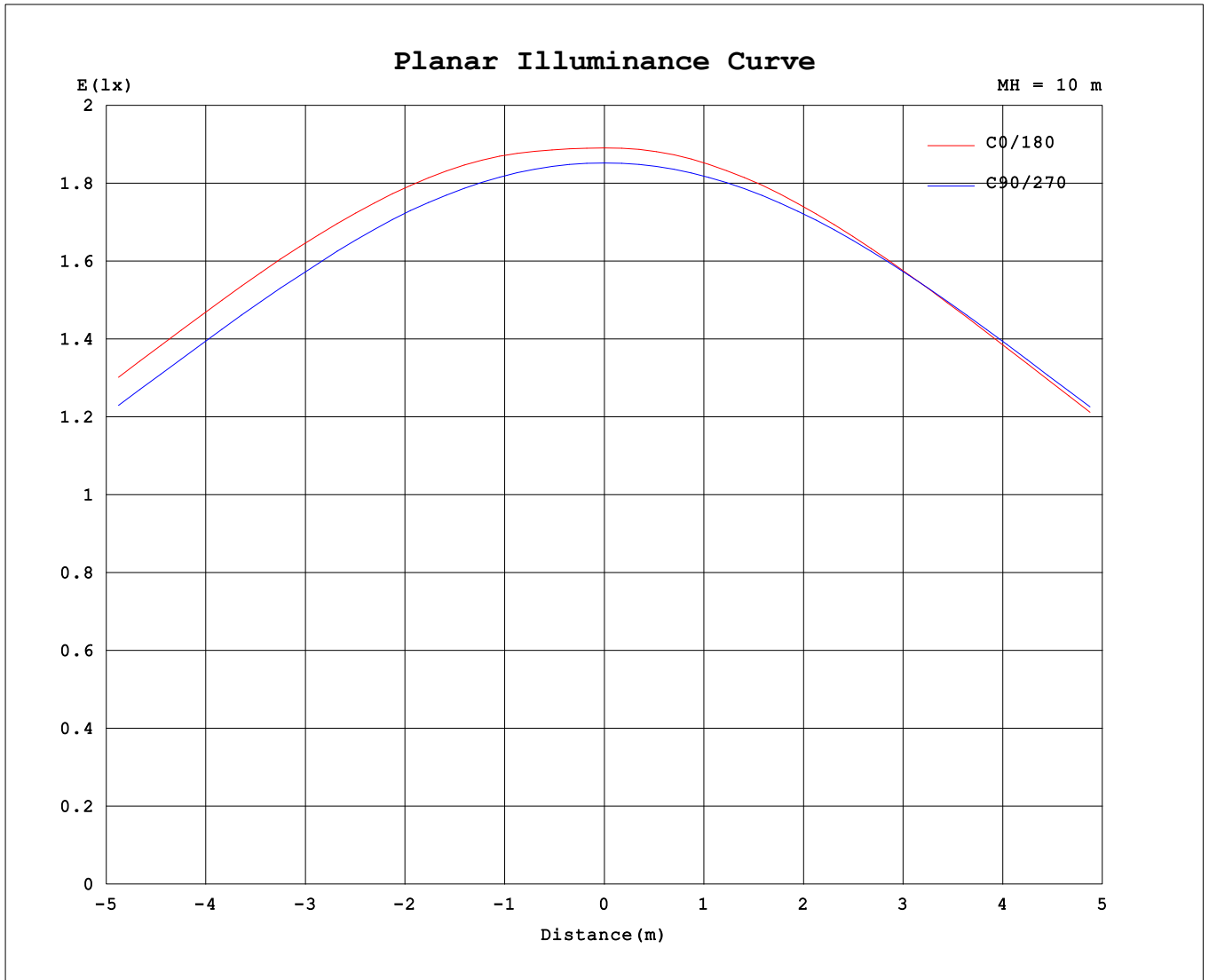
AvgL	cd/m2
L_0~180 (65) av	15269
L_0~180 (75) av	13460
L_0~180 (85) av	9970
L_90~270 (65) av	15264
L_90~270 (75) av	13324
L_90~270 (85) av	9275
L_45 (65) av	15255
L_45 (75) av	13578
L_45 (85) av	10110

Standard: GB/T 29293-2012

C Range: 0 - 360DEG
 C Interval: 15.0DEG
 Test Speed: HIGH
 Temperature:25.3°C
 Operators:DAMIN
 Test Date:2024-06-21

γ Range: 0 - 180DEG
 γ Interval: 1.0DEG
 Test System:EVERFINE GO-2000B_V1 SYSTEM V2.00.471
 Humidity:65.0%
 Test Distance:4.880m [K=1.0000]
 Remarks:

Planar Illuminance Curve



C Range: 0 - 360DEG
 C Interval: 15.0DEG
 Test Speed: HIGH
 Temperature: 25.3°C
 Operators: DAMIN
 Test Date: 2024-06-21

γ Range: 0 - 180DEG
 γ Interval: 1.0DEG
 Test System: EVERFINE GO-2000B_V1 SYSTEM V2.00.471
 Humidity: 65.0%
 Test Distance: 4.880m [K=1.0000]
 Remarks:

LUMINOUS DISTRIBUTION INTENSITY DATA

NAME: LED Strip	TYPE: Indoor lighting	WEIGHT: 75g
SPEC.: 2835 160LED	DIM.: 500*12*1.9MM	SERIAL No.: 20240620001
MFR.: EVERFINE	SUR.: 500*12MM	Shielding Angle:

Table--1

UNIT: cd

C (DEG) \ γ (DEG)	0	15	30	45	60	75	90	105	120	135	150	165	180	195	210	225	240	255	270
0	189	188	186	186	186	186	185	185	186	187	188	190	189	188	186	186	186	186	185
5	190	189	187	186	185	185	185	185	185	186	187	188	188	187	185	185	185	185	185
10	190	189	187	186	184	184	183	183	183	183	184	185	186	184	183	182	183	183	183
15	188	188	186	184	182	181	180	180	180	179	180	181	181	180	179	178	179	180	180
20	185	185	183	181	178	176	176	176	175	174	174	175	175	174	173	173	175	176	176
25	180	180	179	177	173	170	171	170	169	168	167	168	168	167	167	167	168	170	170
30	174	175	173	171	167	165	164	163	161	160	159	160	160	159	159	159	161	163	163
35	166	167	165	163	161	158	157	155	152	151	150	150	151	149	150	150	152	154	156
40	157	158	156	154	152	150	147	145	142	141	140	140	140	139	139	140	142	144	146
45	146	147	145	144	142	139	136	134	131	129	128	128	128	127	128	128	131	133	135
50	134	135	133	132	130	127	123	121	118	116	114	114	115	114	115	116	118	121	123
55	120	121	119	118	116	113	109	107	104	102	100	99.8	100	99.4	100	101	104	106	109
60	104	105	103	102	100	97.4	93.9	91.2	88.2	86.3	84.4	84.1	84.6	84.0	85.0	86.2	88.7	91.1	93.8
65	87.1	88.0	86.2	85.2	83.5	80.0	77.1	74.6	71.4	69.5	67.9	67.3	67.8	67.6	68.7	69.9	72.4	74.6	77.7
70	68.7	69.6	68.1	67.2	65.3	62.0	59.2	56.6	54.0	52.1	50.7	50.1	50.6	50.6	51.6	52.8	55.0	57.2	59.6
75	50.0	50.6	49.2	49.0	46.3	44.2	41.0	39.0	36.3	35.0	33.3	33.2	33.6	33.5	34.6	35.6	37.6	39.6	41.7
80	31.1	31.9	30.9	30.2	27.9	26.1	23.6	22.1	19.9	19.0	17.7	17.5	18.0	17.9	18.9	19.4	21.1	22.6	24.7
85	14.7	15.1	14.4	13.9	12.2	11.1	9.33	8.67	7.38	6.78	6.01	5.85	6.10	6.08	6.78	7.13	8.21	8.95	10.1
90	3.71	3.95	3.62	3.45	2.81	2.25	1.26	1.78	1.72	1.60	1.56	1.51	1.44	1.53	1.58	1.58	1.68	1.79	1.55
95	0.94	1.03	1.09	1.08	0.90	0.75	0.70	1.07	1.08	0.96	0.98	1.01	0.98	0.96	0.95	1.07	1.16	1.42	0.70
100	0.77	0.77	0.75	0.71	0.72	0.70	0.67	0.89	1.35	1.16	1.14	1.01	0.94	0.97	1.02	1.33	1.41	0.82	0.71
105	0.72	0.74	0.74	0.77	0.77	0.77	0.77	0.82	1.40	1.56	1.59	1.27	1.17	1.22	1.34	1.55	1.33	0.83	0.82
110	0.82	0.84	0.84	0.86	0.86	0.89	0.89	0.92	1.09	1.63	1.76	1.48	1.44	1.47	1.58	1.41	1.04	0.95	0.95
115	0.93	0.95	0.95	0.97	0.97	1.00	1.02	1.04	1.07	1.19	1.57	1.62	1.60	1.63	1.57	1.22	1.12	1.08	1.07
120	1.04	1.05	1.06	1.08	1.08	1.12	1.14	1.16	1.16	1.24	1.43	1.42	1.59	1.50	1.41	1.27	1.21	1.19	1.19
125	1.15	1.16	1.17	1.19	1.20	1.24	1.26	1.27	1.27	1.31	1.37	1.38	1.42	1.40	1.40	1.35	1.32	1.31	1.31
130	1.26	1.27	1.28	1.30	1.31	1.35	1.37	1.39	1.39	1.40	1.43	1.45	1.49	1.48	1.47	1.44	1.44	1.43	1.42
135	1.37	1.39	1.39	1.42	1.43	1.47	1.49	1.51	1.50	1.52	1.51	1.53	1.58	1.57	1.56	1.55	1.55	1.54	1.54
140	1.48	1.51	1.52	1.54	1.55	1.58	1.60	1.62	1.62	1.63	1.62	1.63	1.67	1.66	1.67	1.66	1.66	1.65	1.64
145	1.60	1.63	1.63	1.65	1.66	1.69	1.71	1.73	1.72	1.73	1.72	1.73	1.77	1.76	1.77	1.76	1.76	1.75	1.74
150	1.71	1.75	1.74	1.76	1.77	1.80	1.81	1.83	1.82	1.83	1.82	1.83	1.86	1.85	1.86	1.85	1.86	1.85	1.84
155	1.83	1.86	1.85	1.86	1.87	1.89	1.91	1.93	1.92	1.93	1.92	1.93	1.96	1.94	1.95	1.94	1.95	1.94	1.93
160	1.94	1.96	1.95	1.96	1.96	1.99	1.99	2.01	2.01	2.02	2.01	2.02	2.05	2.02	2.04	2.02	2.03	2.02	2.02
165	2.05	2.06	2.04	2.05	2.05	2.07	2.07	2.09	2.09	2.10	2.09	2.10	2.14	2.10	2.11	2.10	2.11	2.10	2.10
170	2.14	2.14	2.13	2.13	2.13	2.15	2.15	2.16	2.16	2.17	2.16	2.17	2.21	2.17	2.18	2.17	2.18	2.16	2.17
175	2.21	2.22	2.19	2.20	2.20	2.21	2.20	2.22	2.21	2.22	2.21	2.23	2.26	2.22	2.23	2.21	2.22	2.21	2.22
180	2.27	2.26	2.24	2.24	2.24	2.25	2.24	2.24	2.24	2.24	2.24	2.25	2.27	2.25	2.25	2.24	2.24	2.24	2.24

C Range: 0 - 360DEG
 C Interval: 15.0DEG
 Test Speed: HIGH
 Temperature:25.3℃
 Operators:DAMIN
 Test Date:2024-06-21

γ Range: 0 - 180DEG
 γ Interval: 1.0DEG
 Test System:EVERFINE GO-2000B_V1 SYSTEM V2.00.471
 Humidity:65.0%
 Test Distance:4.880m [K=1.0000]
 Remarks:

LUMINOUS DISTRIBUTION INTENSITY DATA

NAME: LED Strip	TYPE: Indoor lighting	WEIGHT: 75g
SPEC.: 2835 160LED	DIM.: 500*12*1.9MM	SERIAL No.: 20240620001
MFR.: EVERFINE	SUR.: 500*12MM	Shielding Angle:

Table--2

UNIT: cd

C (DEG) \ γ (DEG)	285	300	315	330	345														
0	185	186	187	188	190														
5	185	186	186	188	190														
10	183	184	186	188	190														
15	181	183	184	186	188														
20	177	180	181	183	185														
25	171	175	177	179	181														
30	164	169	171	173	175														
35	155	161	163	166	167														
40	147	152	154	157	158														
45	138	141	143	146	147														
50	126	129	131	134	135														
55	112	116	117	120	121														
60	97.5	101	101	104	105														
65	80.9	84.3	84.8	87.4	87.8														
70	62.8	66.2	67.3	69.5	69.7														
75	44.9	47.5	49.1	50.6	50.9														
80	26.9	29.3	30.5	32.2	32.0														
85	11.6	13.6	14.5	15.6	15.5														
90	2.32	3.22	3.63	4.25	4.17														
95	0.80	0.85	0.85	0.97	0.95														
100	0.72	0.74	0.73	0.74	0.78														
105	0.80	0.81	0.79	0.78	0.76														
110	0.92	0.90	0.89	0.89	0.86														
115	1.04	1.02	1.00	1.00	0.98														
120	1.16	1.14	1.11	1.11	1.09														
125	1.27	1.25	1.22	1.22	1.20														
130	1.39	1.36	1.33	1.33	1.31														
135	1.50	1.48	1.45	1.44	1.42														
140	1.60	1.59	1.56	1.55	1.54														
145	1.71	1.69	1.67	1.66	1.65														
150	1.81	1.79	1.77	1.77	1.76														
155	1.90	1.89	1.87	1.88	1.86														
160	1.99	1.98	1.96	1.97	1.96														
165	2.08	2.07	2.05	2.06	2.05														
170	2.15	2.15	2.13	2.14	2.13														
175	2.20	2.21	2.19	2.20	2.21														
180	2.24	2.24	2.24	2.25	2.25														

C Range: 0 - 360DEG
 C Interval: 15.0DEG
 Test Speed: HIGH
 Temperature:25.3°C
 Operators:DAMIN
 Test Date:2024-06-21

γ Range: 0 - 180DEG
 γ Interval: 1.0DEG
 Test System:EVERFINE GO-2000B_V1 SYSTEM V2.00.471
 Humidity:65.0%
 Test Distance:4.880m [K=1.0000]
 Remarks: