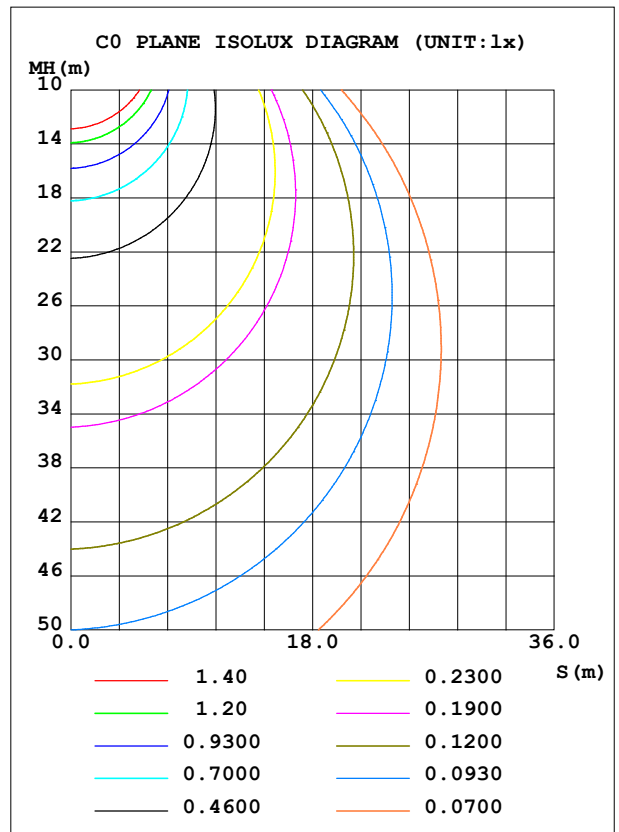
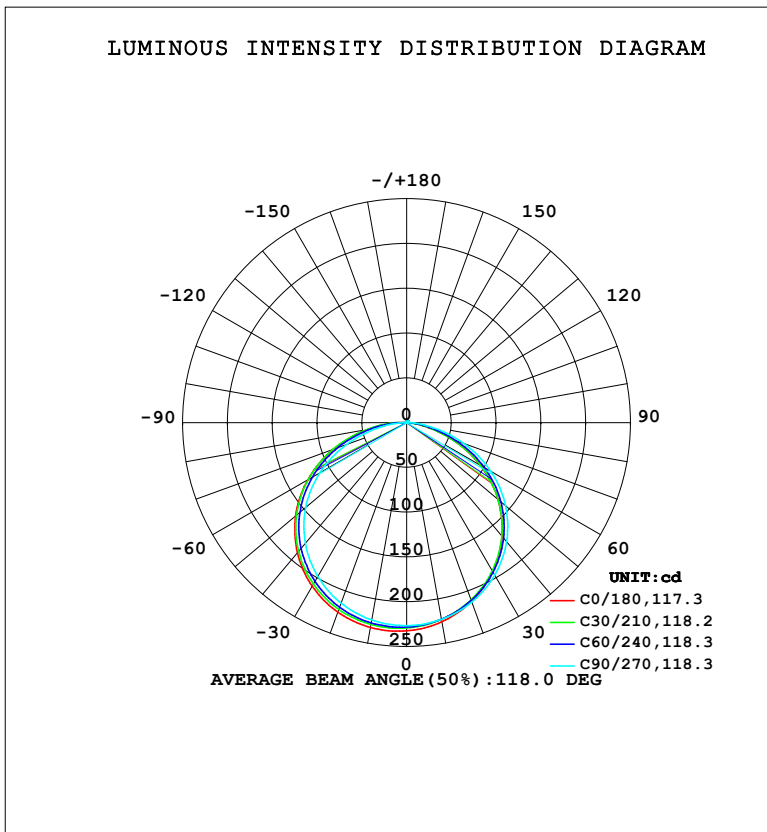


LUMINAIRE PHOTOMETRIC TEST REPORT

NAME: LED Strip	TYPE: Indoor lighting	WEIGHT: 75g
SPEC.: 2835 150LED	DIM.: 500*10*1.2MM	SERIAL No.: 20230521001
MFR.: EVERFINE	SUR.: 500*10MM	Shielding Angle:

DATA OF LAMP		PHOTOMETRIC DATA			
NOBEL18 (WCP) -3000-HR-ME-TR-EP		Imax (cd)	233.2	S/MH (C0/180)	1.35
NOMINAL POWER (W)	4.98301	LOR (%)	100.0	S/MH (C90/270)	1.30
RATED VOLTAGE (V)	DC 48	TOTAL FLUX (lm)	707.43	<input type="checkbox"/> UP, DN (C0-180)	0.8,49.0
NOMINAL FLUX (lm)	707.426	CIE CLASS	DIRECT	<input type="checkbox"/> UP, DN (C180-360)	0.8,49.5
LAMPS INSIDE	1	<input type="checkbox"/> up (%)	1.6	CIBSE SHR NOM	1.25
TEST VOLTAGE (V)	DC 48	<input type="checkbox"/> down (%)	98.4	CIBSE SHR MAX	1.35



C Range: 0 - 360DEG
 C Interval: 15.0DEG
 Test Speed: HIGH
 Temperature: 25.3°C
 Operators: DAMIN
 Test Date: 2023-05-21

Range: 0 - 180DEG
 Interval: 1.0DEG
 Test System: EVERFINE GO-2000B_V1 SYSTEM V2.00.471
 Humidity: 65.0%
 Test Distance: 4.880m [K=1.0000]
 Remarks:

ZONAL FLUX DIAGRAM

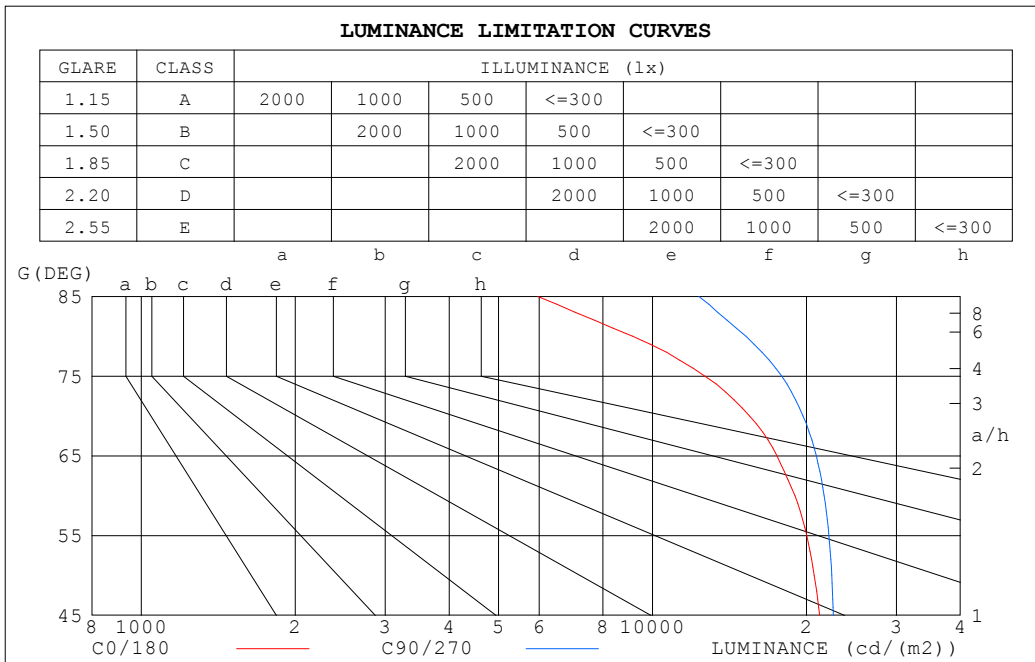
ZONAL FLUX DIAGRAM:

°	C0	C45	C90	C135	C180	C225	C270	C315	°	□ zone	□ total	%lum,lamp
10	225.8	223.1	223.1	227.3	232.3	228.0	223.7	221.5	0- 10	21.67	21.67	3.06,3.06
20	212.3	210.8	213.1	220.4	225.2	220.7	214.4	208.8	10- 20	62.48	84.15	11.9,11.9
30	192.1	192.1	196.6	206.9	211.0	206.7	198.5	189.6	20- 30	95.91	180.1	25.5,25.5
40	165.6	166.9	173.6	186.5	189.8	185.9	176.1	163.8	30- 40	117.7	297.8	42.1,42.1
50	133.2	135.4	144.1	159.5	161.8	158.6	147.1	131.5	40- 50	124.7	422.5	59.7,59.7
60	94.91	97.80	108.4	125.6	127.3	124.7	111.8	93.56	50- 60	115.2	537.7	76,76
70	52.93	55.40	67.37	86.19	87.12	85.25	70.99	52.12	60- 70	89.34	627.0	88.6,88.6
80	15.87	17.31	26.44	44.17	44.20	43.62	29.94	17.39	70- 80	51.91	678.9	96,96
90	1.259	1.531	1.893	12.04	9.588	10.24	2.368	1.279	80- 90	17.34	696.3	98.4,98.4
100	0.9448	0.9253	0.8085	1.526	0.8749	0.9296	0.8384	0.9668	90-100	2.816	699.1	98.8,98.8
110	1.167	1.190	1.088	0.9290	0.9855	0.9960	1.122	1.236	100-110	1.080	700.2	99,99
120	1.443	1.476	1.389	1.205	1.266	1.283	1.424	1.523	110-120	1.221	701.4	99.1,99.1
130	1.723	1.760	1.675	1.489	1.547	1.567	1.709	1.797	120-130	1.358	702.7	99.3,99.3
140	1.986	2.030	1.946	1.770	1.825	1.843	1.974	2.045	130-140	1.385	704.1	99.5,99.5
150	2.232	2.270	2.194	2.052	2.102	2.111	2.216	2.271	140-150	1.287	705.4	99.7,99.7
160	2.467	2.473	2.409	2.316	2.374	2.355	2.427	2.452	150-160	1.059	706.5	99.9,99.9
170	2.654	2.635	2.587	2.542	2.615	2.565	2.602	2.600	160-170	0.7069	707.2	100,100
180	2.755	2.717	2.697	2.678	2.755	2.706	2.697	2.679	170-180	0.2522	707.4	100,100
DEG	LUMINOUS INTENSITY:cd									UNIT:lm		

C Range: 0 - 360DEG
 C Interval: 15.0DEG
 Test Speed: HIGH
 Temperature:25.3°C
 Operators:DAMIN
 Test Date:2023-05-21

□ Range: 0 - 180DEG
 □ Interval: 1.0DEG
 Test System:EVERFINE GO-2000B_V1 SYSTEM V2.00.471
 Humidity:65.0%
 Test Distance:4.880m [K=1.0000]
 Remarks:

LUMINANCE LIMITATION CURVES



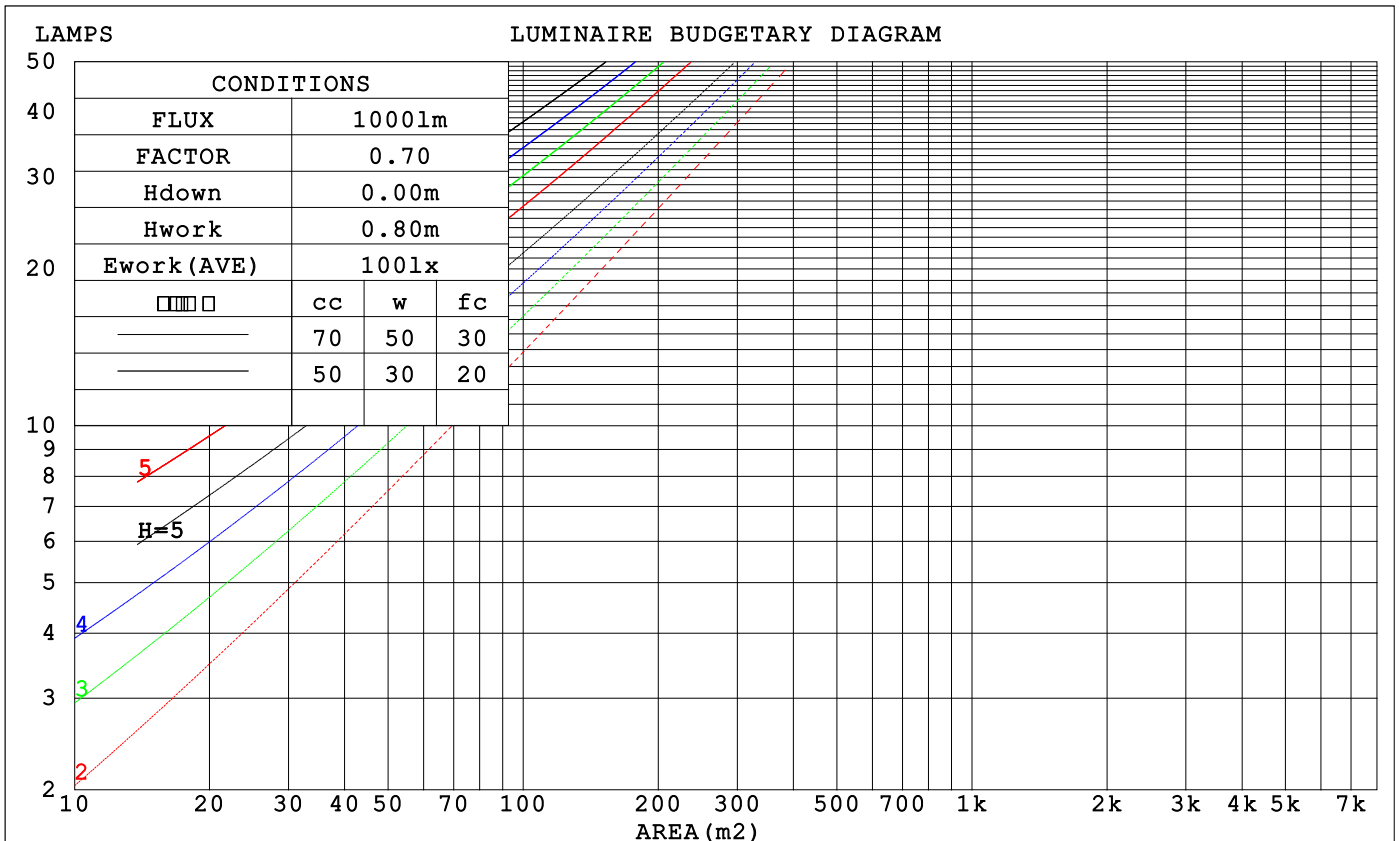
LUMINANCE cd/(m2)		
G (DEG)	C0/180	C90/270
85	5964	12328
80	9140	15226
75	12660	17896
70	15475	19697
65	17516	20923
60	18983	21671
55	20024	22134
50	20718	22415
45	21233	22578

C Range: 0 - 360DEG
 C Interval: 15.0DEG
 Test Speed: HIGH
 Temperature: 25.3°C
 Operators: DAMIN
 Test Date: 2023-05-21

Range: 0 - 180DEG
 Interval: 1.0DEG
 Test System: EVERFINE GO-2000B_V1 SYSTEM V2.00.471
 Humidity: 65.0%
 Test Distance: 4.880m [K=1.0000]
 Remarks:

CU AND LUMINAIRE BUDGETARY ESTIMATE DIAGRAM

□cc	80%			70%			50%			30%			10%			0
□w	50%	30%	10%	50%	30%	10%	50%	30%	10%	50%	30%	10%	50%	30%	10%	0
□fc	20%			20%			20%			20%			20%			0
RCR	RCR:Room Cavity Ratio			Coefficients of Utilization(CU)												
0.0	1.19	1.19	1.19	1.16	1.16	1.16	1.10	1.10	1.10	1.05	1.05	1.05	1.01	1.01	1.01	.98
1.0	1.03	.99	.95	1.01	.96	.93	.96	.93	.90	.92	.89	.87	.88	.86	.84	.81
2.0	.89	.82	.76	.87	.81	.75	.83	.78	.73	.80	.75	.71	.77	.73	.70	.67
3.0	.78	.70	.63	.76	.69	.62	.73	.67	.61	.70	.65	.60	.67	.63	.59	.56
4.0	.69	.60	.53	.68	.59	.53	.65	.58	.52	.62	.56	.51	.60	.55	.50	.48
5.0	.62	.52	.46	.60	.52	.45	.58	.50	.45	.56	.49	.44	.54	.48	.43	.41
6.0	.55	.46	.40	.54	.46	.39	.52	.45	.39	.50	.44	.38	.49	.43	.38	.36
7.0	.50	.41	.35	.49	.41	.35	.47	.40	.34	.46	.39	.34	.44	.38	.34	.32
8.0	.46	.37	.31	.45	.37	.31	.43	.36	.31	.42	.35	.30	.41	.35	.30	.28
9.0	.42	.33	.28	.41	.33	.28	.40	.33	.27	.39	.32	.27	.38	.31	.27	.25
10.0	.39	.31	.25	.38	.30	.25	.37	.30	.25	.36	.29	.25	.35	.29	.25	.23



C Range: 0 - 360DEG
 C Interval: 15.0DEG
 Test Speed: HIGH
 Temperature:25.3°C
 Operators:DAMIN
 Test Date:2023-05-21

□ Range: 0 - 180DEG
 □ Interval: 1.0DEG
 Test System:EVERFINE GO-2000B_V1 SYSTEM V2.00.471
 Humidity:65.0%
 Test Distance:4.880m [K=1.0000]
 Remarks:

WEC AND CCEC

□cc	80%			70%			50%			30%			10%			0
□w	50%	30%	10%	50%	30%	10%	50%	30%	10%	50%	30%	10%	50%	30%	10%	0
□fc	20%			20%			20%			20%			20%			0
RCR	RCR:Room Cavity Ratio						Wall Exitance Coefficients (WEC)									
0.0	.320	.182	.058	.312	.178	.057	.298	.171	.055	.285	.164	.053	.273	.158	.051	
1.0	.298	.164	.050	.292	.161	.049	.279	.155	.048	.267	.150	.047	.257	.145	.046	
2.0	.275	.146	.044	.269	.144	.043	.258	.140	.042	.247	.136	.042	.238	.132	.041	
3.0	.253	.131	.039	.248	.130	.038	.238	.126	.038	.229	.123	.037	.220	.120	.036	
4.0	.233	.119	.034	.229	.117	.034	.220	.114	.034	.212	.112	.033	.204	.109	.033	
5.0	.216	.108	.031	.212	.107	.031	.204	.105	.030	.197	.102	.030	.190	.100	.030	
6.0	.201	.099	.028	.197	.098	.028	.190	.096	.028	.183	.094	.027	.177	.092	.027	
7.0	.187	.092	.026	.184	.091	.026	.178	.089	.025	.172	.087	.025	.166	.085	.025	
8.0	.175	.085	.024	.172	.084	.024	.167	.082	.023	.161	.081	.023	.156	.079	.023	
9.0	.165	.079	.022	.162	.078	.022	.157	.077	.022	.152	.075	.021	.147	.074	.021	
10.0	.165	.079	.022	.162	.078	.022	.157	.077	.022	.152	.075	.021	.147	.074	.021	

□cc	80%			70%			50%			30%			10%			0
□w	50%	30%	10%	50%	30%	10%	50%	30%	10%	50%	30%	10%	50%	30%	10%	0
□fc	20%			20%			20%			20%			20%			0
RCR	RCR:Room Cavity Ratio						Ceiling Cavity Exitance Coefficients (CCEC)									
0.0	.203	.203	.203	.173	.173	.173	.118	.118	.118	.068	.068	.068	.022	.022	.022	
1.0	.193	.168	.146	.165	.144	.125	.113	.099	.087	.065	.057	.050	.021	.018	.016	
2.0	.185	.144	.109	.159	.124	.095	.109	.086	.066	.063	.050	.039	.020	.016	.013	
3.0	.178	.127	.086	.152	.109	.074	.105	.076	.052	.060	.044	.031	.019	.014	.010	
4.0	.170	.113	.070	.146	.098	.061	.100	.068	.043	.058	.040	.025	.019	.013	.008	
5.0	.163	.103	.059	.140	.089	.051	.096	.062	.036	.056	.037	.022	.018	.012	.007	
6.0	.155	.095	.051	.134	.082	.045	.092	.057	.032	.053	.034	.019	.017	.011	.006	
7.0	.149	.088	.045	.128	.076	.040	.088	.053	.028	.051	.031	.017	.017	.010	.006	
8.0	.142	.082	.041	.122	.071	.036	.085	.050	.025	.049	.030	.015	.016	.010	.005	
9.0	.136	.077	.038	.117	.067	.033	.081	.047	.023	.047	.028	.014	.015	.009	.005	
10.0	.130	.073	.035	.112	.063	.030	.078	.045	.022	.045	.026	.013	.015	.009	.004	

C Range: 0 - 360DEG
 C Interval: 15.0DEG
 Test Speed: HIGH
 Temperature:25.3°C
 Operators:DAMIN
 Test Date:2023-05-21

□ Range: 0 - 180DEG
 □ Interval: 1.0DEG
 Test System:EVERFINE GO-2000B_V1 SYSTEM V2.00.471
 Humidity:65.0%
 Test Distance:4.880m [K=1.0000]
 Remarks:

UGR(Unified Glare Rating) Table

ceiling/cavity	0.7	0.7	0.5	0.5	0.3	0.7	0.7	0.5	0.5	0.3
walls	0.5	0.3	0.5	0.3	0.3	0.5	0.3	0.5	0.3	0.3
working plane	0.2	0.2	0.2	0.2	0.2	0.2	0.2	0.2	0.2	0.2
Room dimensions	Viewed crosswise					Viewed endwise				
x = 2H y = 2H	24.0	25.5	24.3	25.8	26.0	24.5	26.0	24.8	26.3	26.5
3H	25.3	26.7	25.6	26.9	27.2	26.0	27.4	26.3	27.7	28.0
4H	25.7	27.0	26.0	27.3	27.6	26.6	27.9	26.9	28.2	28.5
6H	25.8	27.1	26.2	27.4	27.7	27.0	28.2	27.3	28.5	28.8
8H	25.9	27.1	26.2	27.4	27.7	27.1	28.3	27.4	28.6	28.9
12H	25.8	27.0	26.2	27.3	27.7	27.1	28.3	27.5	28.6	29.0
4H 2H	24.6	25.9	24.9	26.2	26.5	25.0	26.3	25.3	26.6	26.9
3H	26.0	27.2	26.4	27.5	27.8	26.6	27.8	27.0	28.1	28.5
4H	26.5	27.5	26.9	27.9	28.3	27.3	28.4	27.7	28.7	29.1
6H	26.7	27.7	27.1	28.1	28.5	27.8	28.7	28.2	29.1	29.5
8H	26.8	27.7	27.2	28.1	28.5	27.9	28.8	28.4	29.2	29.6
12H	26.8	27.6	27.2	28.0	28.5	28.0	28.8	28.5	29.2	29.7
8H 4H	26.6	27.5	27.1	27.9	28.3	27.4	28.3	27.9	28.7	29.1
6H	27.0	27.7	27.5	28.2	28.6	28.0	28.7	28.5	29.2	29.6
8H	27.1	27.7	27.6	28.2	28.7	28.2	28.8	28.7	29.3	29.8
12H	27.1	27.7	27.6	28.2	28.7	28.3	28.9	28.8	29.4	29.9
12H 4H	26.6	27.5	27.1	27.9	28.3	27.4	28.2	27.9	28.6	29.1
6H	27.0	27.7	27.5	28.1	28.6	28.0	28.6	28.5	29.1	29.6
8H	27.1	27.7	27.6	28.2	28.7	28.2	28.8	28.7	29.2	29.8
Variations with the observer position at spacings(CIE Pub.117):										
S = 1.0H	+ 0.2 / - 0.3					+ 0.2 / - 0.2				
1.5H	+ 0.2 / - 0.4					+ 0.2 / - 0.3				
2.0H	+ 0.3 / - 0.3					+ 0.3 / - 0.4				

CIE Pub.117, 707.4 lm Total Lamp Luminous Flux Correct (8log(F/F0) = -1.2)
 Area: 0.01 m2

C Range: 0 - 360DEG
 C Interval: 15.0DEG
 Test Speed: HIGH
 Temperature:25.3°C
 Operators:DAMIN
 Test Date:2023-05-21

Range: 0 - 180DEG
 Interval: 1.0DEG
 Test System:EVERFINE GO-2000B_V1 SYSTEM V2.00.471
 Humidity:65.0%
 Test Distance:4.880m [K=1.0000]
 Remarks:

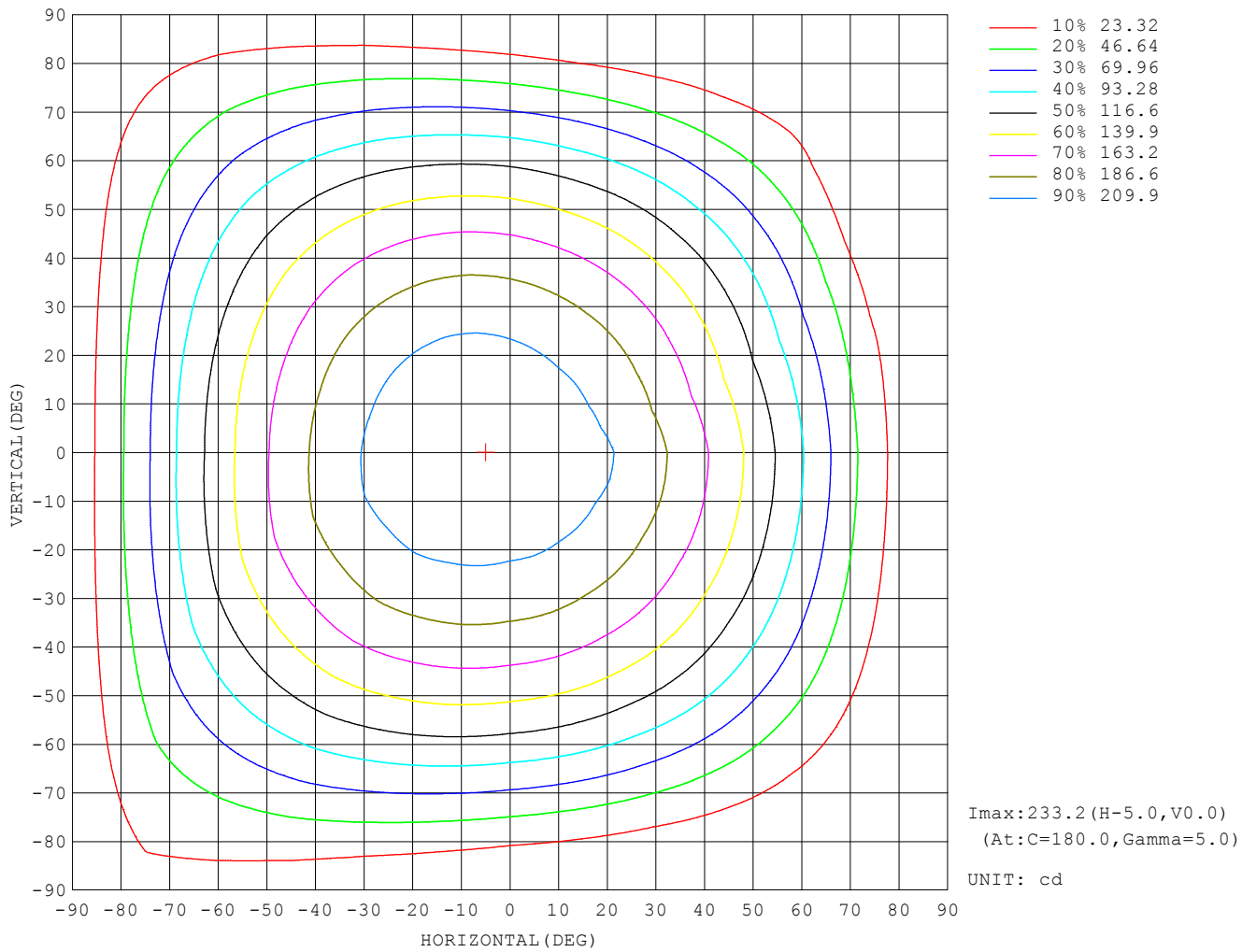
UTILIZATION FACTORS TABLE

REFLECTANCE										
Ceiling	0.8	0.8	0.8	0.7	0.7	0.7	0.5	0.5	0.5	0
Walls	0.7	0.5	0.3	0.7	0.5	0.3	0.7	0.5	0.3	0
Working plane	0.2	0.2	0.2	0.2	0.2	0.2	0.2	0.2	0.2	0
ROOM INDEX	UTILIZATION FACTORS (PERCENT) $k(RI) \times RCR = 5$									
$k = 0.60$	56	44	37	55	44	37	54	43	37	30
0.80	66	54	47	65	54	46	63	53	46	39
1.00	74	63	56	73	62	55	71	64	55	47
1.25	82	71	63	80	70	63	77	68	62	54
1.50	87	76	69	85	75	69	82	74	68	60
2.00	94	85	78	92	84	77	88	81	76	67
2.50	98	90	83	96	88	82	91	85	80	72
3.00	101	94	88	99	92	87	95	89	85	76
4.00	105	99	94	103	97	93	98	94	90	81
5.00	108	103	98	105	101	97	100	97	93	84
ROOM INDEX	UF (total)									Direct
According to DIN EN 13032-2 2004			Suspended				SHRNOM = 1.25			

C Range: 0 - 360DEG
 C Interval: 15.0DEG
 Test Speed: HIGH
 Temperature: 25.3°C
 Operators: DAMIN
 Test Date: 2023-05-21

Range: 0 - 180DEG
 Interval: 1.0DEG
 Test System: EVERFINE GO-2000B_V1 SYSTEM V2.00.471
 Humidity: 65.0%
 Test Distance: 4.880m [K=1.0000]
 Remarks:

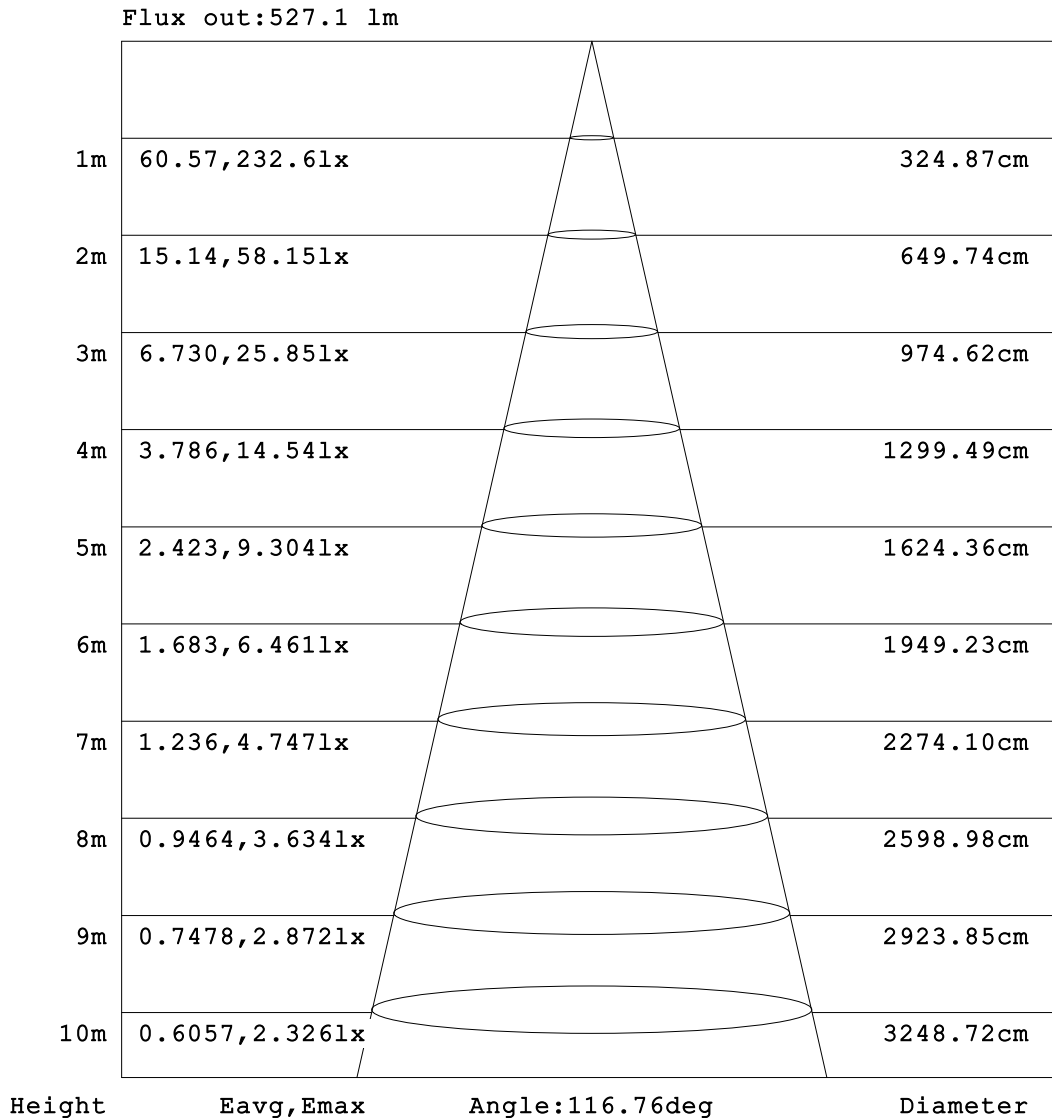
ISOCANDELA DIAGRAM



C Range: 0 - 360DEG
 C Interval: 15.0DEG
 Test Speed: HIGH
 Temperature: 25.3°C
 Operators: DAMIN
 Test Date: 2023-05-21

Range: 0 - 180DEG
 Interval: 1.0DEG
 Test System: EVERFINE GO-2000B_V1 SYSTEM V2.00.471
 Humidity: 65.0%
 Test Distance: 4.880m [K=1.0000]
 Remarks:

AAI Figure

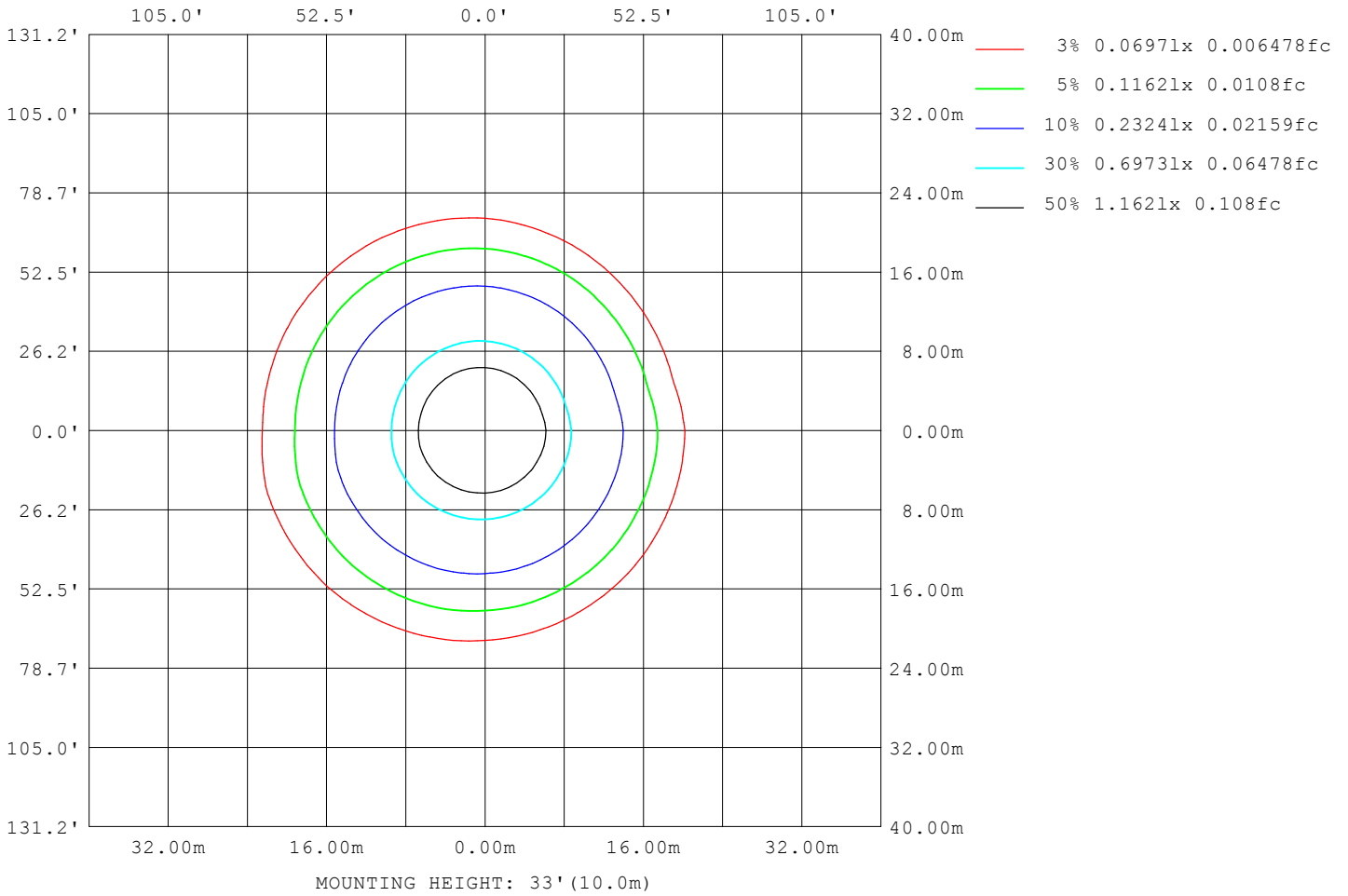


Note:The Curves indicate the illuminated area and the average illumination when the luminaire is at different distance.

C Range: 0 - 360DEG
 C Interval: 15.0DEG
 Test Speed: HIGH
 Temperature:25.3°C
 Operators:DAMIN
 Test Date:2023-05-21

Range: 0 - 180DEG
 Interval: 1.0DEG
 Test System:EVERFINE GO-2000B_V1 SYSTEM V2.00.471
 Humidity:65.0%
 Test Distance:4.880m [K=1.0000]
 Remarks:

ISOLUX DIAGRAM



C Range: 0 - 360DEG
 C Interval: 15.0DEG
 Test Speed: HIGH
 Temperature: 25.3°C
 Operators: DAMIN
 Test Date: 2023-05-21

Range: 0 - 180DEG
 Interval: 1.0DEG
 Test System: EVERFINE GO-2000B_V1 SYSTEM V2.00.471
 Humidity: 65.0%
 Test Distance: 4.880m [K=1.0000]
 Remarks:

LED Avg.L Report

NAME: LED Strip	TYPE: Indoor lighting	WEIGHT: 75g
SPEC.: 2835 150LED	DIM.: 500*10*1.2MM	SERIAL No.: 20230521001
MFR.: EVERFINE	SUR.: 500*10MM	Shielding Angle:

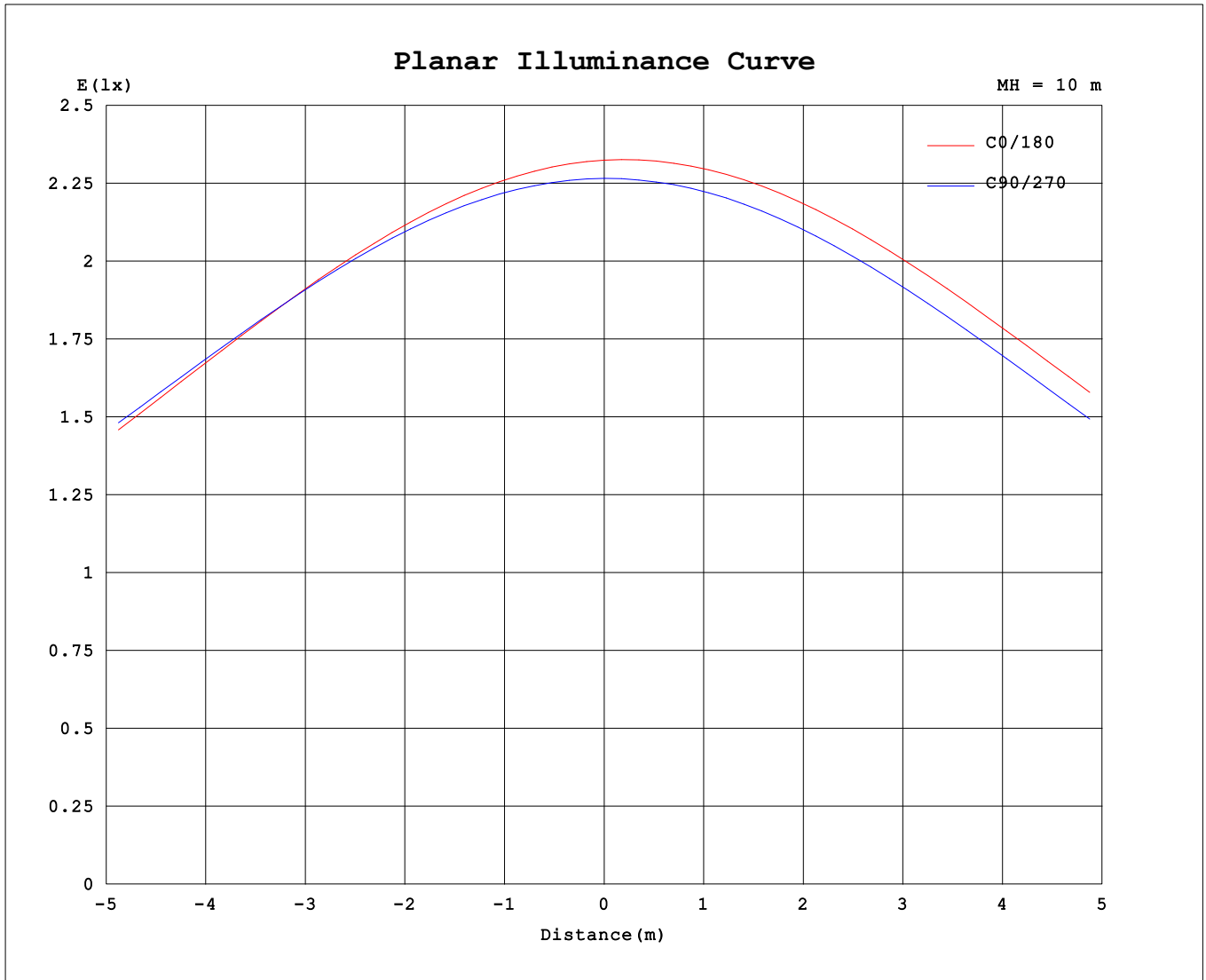
AvgL	cd/m2
L_0~180 (65) av	21520
L_0~180 (75) av	18980
L_0~180 (85) av	17113
L_90~270 (65) av	21350
L_90~270 (75) av	18600
L_90~270 (85) av	13828
L_45 (65) av	21415
L_45 (75) av	19005
L_45 (85) av	18067

Standard: GB/T 29293-2012

C Range: 0 - 360DEG
 C Interval: 15.0DEG
 Test Speed: HIGH
 Temperature:25.3℃
 Operators:DAMIN
 Test Date:2023-05-21

Range: 0 - 180DEG
 Interval: 1.0DEG
 Test System:EVERFINE GO-2000B_V1 SYSTEM V2.00.471
 Humidity:65.0%
 Test Distance:4.880m [K=1.0000]
 Remarks:

Planar Illuminance Curve



C Range: 0 - 360DEG
 C Interval: 15.0DEG
 Test Speed: HIGH
 Temperature: 25.3°C
 Operators: DAMIN
 Test Date: 2023-05-21

Range: 0 - 180DEG
 Interval: 1.0DEG
 Test System: EVERFINE GO-2000B_V1 SYSTEM V2.00.471
 Humidity: 65.0%
 Test Distance: 4.880m [K=1.0000]
 Remarks:

LUMINOUS DISTRIBUTION INTENSITY DATA

Table--1

UNIT: cd

C (DEG) \ □ (DEG)	0	15	30	45	60	75	90	105	120	135	150	165	180	195	210	225	240	255	270
0	232	231	229	229	228	228	227	227	227	228	228	231	232	231	229	229	228	228	227
5	230	229	227	227	226	226	226	226	227	228	229	232	233	232	230	229	228	227	226
10	226	225	223	223	223	223	223	224	225	227	228	231	232	231	229	228	227	226	224
15	220	219	218	218	218	219	219	221	222	225	226	229	230	228	226	225	224	222	220
20	212	212	210	211	211	212	213	215	217	220	222	225	225	223	222	221	219	217	214
25	203	203	202	202	203	205	206	208	211	215	216	219	219	217	216	215	213	210	207
30	192	192	191	192	193	195	197	200	203	207	209	212	211	209	208	207	205	202	198
35	180	180	179	180	181	184	186	190	193	198	200	203	201	200	199	197	195	192	188
40	166	166	165	167	168	171	174	178	182	187	189	192	190	188	188	186	183	180	176
45	150	150	150	152	154	157	160	164	169	174	176	180	177	176	175	173	170	167	162
50	133	133	133	135	137	141	144	149	154	159	162	166	162	161	161	159	156	152	147
55	115	115	115	117	120	123	127	132	138	143	146	150	145	145	144	142	139	135	130
60	94.9	94.6	95.2	97.8	100	104	108	114	120	126	129	133	127	127	127	125	122	117	112
65	74.0	73.8	74.6	77.1	79.8	84.2	88.4	94.4	100	106	110	114	108	108	108	106	102	97.4	92.0
70	52.9	52.4	52.8	55.4	58.5	63.1	67.4	73.5	79.6	86.2	90.1	93.8	87.1	87.7	87.7	85.3	81.9	76.8	71.0
75	32.8	32.7	32.4	34.6	37.7	42.0	46.3	52.4	58.6	64.9	69.3	72.8	65.5	66.6	66.5	64.4	60.8	55.9	50.0
80	15.9	15.8	16.0	17.3	19.0	22.8	26.4	32.2	38.0	44.2	48.6	52.0	44.2	45.5	45.6	43.6	40.2	35.3	29.9
85	5.20	5.55	5.71	6.31	6.73	8.42	10.7	15.3	20.0	25.6	29.6	32.9	24.6	25.8	26.3	24.4	21.7	17.6	13.4
90	1.26	1.37	1.41	1.53	1.55	1.64	1.89	4.51	8.01	12.0	15.3	17.9	9.59	10.8	11.4	10.2	8.37	5.52	2.37
95	0.98	1.01	0.97	0.96	0.86	0.79	0.77	1.02	2.56	5.20	7.47	9.09	2.56	3.28	3.95	3.21	1.95	1.13	0.79
100	0.94	0.96	0.94	0.93	0.89	0.86	0.81	0.79	0.85	1.53	2.73	3.57	0.87	0.92	0.97	0.93	0.88	0.85	0.84
105	1.03	1.05	1.05	1.05	1.02	0.99	0.93	0.88	0.83	0.83	0.89	1.02	0.89	0.90	0.91	0.90	0.91	0.93	0.97
110	1.17	1.19	1.19	1.19	1.17	1.14	1.09	1.03	0.96	0.93	0.90	0.90	0.99	0.98	0.99	1.00	1.03	1.06	1.12
115	1.31	1.32	1.33	1.33	1.31	1.29	1.24	1.18	1.10	1.06	1.02	1.01	1.12	1.11	1.13	1.14	1.18	1.21	1.28
120	1.44	1.46	1.47	1.48	1.45	1.44	1.39	1.33	1.25	1.20	1.15	1.14	1.27	1.25	1.27	1.28	1.32	1.36	1.42
125	1.58	1.60	1.61	1.62	1.60	1.58	1.54	1.47	1.39	1.35	1.29	1.28	1.41	1.40	1.41	1.43	1.47	1.51	1.57
130	1.72	1.74	1.75	1.76	1.74	1.72	1.67	1.62	1.54	1.49	1.44	1.42	1.55	1.54	1.55	1.57	1.61	1.65	1.71
135	1.86	1.88	1.89	1.90	1.88	1.86	1.81	1.76	1.67	1.63	1.58	1.57	1.69	1.68	1.69	1.70	1.75	1.79	1.85
140	1.99	2.02	2.02	2.03	2.01	1.99	1.95	1.89	1.81	1.77	1.71	1.70	1.82	1.82	1.83	1.84	1.89	1.92	1.97
145	2.11	2.15	2.15	2.15	2.13	2.11	2.07	2.03	1.95	1.91	1.85	1.84	1.96	1.95	1.97	1.98	2.02	2.05	2.10
150	2.23	2.28	2.27	2.27	2.24	2.23	2.19	2.16	2.09	2.05	2.00	1.99	2.10	2.09	2.10	2.11	2.15	2.17	2.22
155	2.35	2.38	2.38	2.38	2.35	2.34	2.31	2.28	2.22	2.19	2.14	2.13	2.24	2.22	2.23	2.24	2.27	2.29	2.33
160	2.47	2.49	2.48	2.47	2.45	2.45	2.41	2.39	2.34	2.32	2.27	2.27	2.37	2.34	2.35	2.36	2.38	2.40	2.43
165	2.57	2.58	2.56	2.56	2.54	2.54	2.50	2.49	2.44	2.44	2.40	2.40	2.50	2.46	2.47	2.47	2.49	2.49	2.52
170	2.65	2.66	2.64	2.63	2.61	2.62	2.59	2.58	2.54	2.54	2.51	2.53	2.62	2.57	2.57	2.56	2.59	2.58	2.60
175	2.72	2.71	2.69	2.69	2.67	2.68	2.66	2.65	2.62	2.63	2.61	2.63	2.70	2.66	2.67	2.65	2.66	2.65	2.67
180	2.75	2.73	2.72	2.72	2.70	2.70	2.70	2.70	2.68	2.68	2.68	2.70	2.75	2.74	2.73	2.71	2.71	2.70	2.70

C Range: 0 - 360DEG
 C Interval: 15.0DEG
 Test Speed: HIGH
 Temperature: 25.3°C
 Operators: DAMIN
 Test Date: 2023-05-21

□ Range: 0 - 180DEG
 □ Interval: 1.0DEG
 Test System: EVERFINE GO-2000B_V1 SYSTEM V2.00.471
 Humidity: 65.0%
 Test Distance: 4.880m [K=1.0000]
 Remarks:

LUMINOUS DISTRIBUTION INTENSITY DATA

Table--2

UNIT: cd

C (DEG) \ □ (DEG)	285	300	315	330	345														
0	227	227	228	228	231														
5	225	225	225	226	228														
10	223	221	221	221	223														
15	218	216	216	215	217														
20	212	210	209	208	209														
25	204	202	200	198	199														
30	195	192	190	188	187														
35	184	180	177	175	174														
40	171	167	164	161	159														
45	157	153	148	145	143														
50	141	137	132	128	126														
55	124	119	113	110	107														
60	105	99.5	93.6	89.6	87.0														
65	85.3	79.1	73.1	68.5	66.0														
70	64.4	57.9	52.1	48.3	45.3														
75	43.5	37.5	32.8	30.2	21.4														
80	24.2	20.1	17.4	16.3	11.4														
85	9.28	7.99	6.68	3.91	4.84														
90	1.60	1.34	1.28	1.41	1.46														
95	0.82	0.91	1.01	1.04	1.08														
100	0.87	0.93	0.97	1.02	1.06														
105	1.00	1.06	1.09	1.14	1.16														
110	1.15	1.20	1.24	1.28	1.30														
115	1.30	1.35	1.38	1.42	1.44														
120	1.45	1.49	1.52	1.56	1.57														
125	1.59	1.63	1.66	1.70	1.70														
130	1.73	1.77	1.80	1.83	1.84														
135	1.86	1.90	1.92	1.96	1.97														
140	1.99	2.03	2.05	2.08	2.09														
145	2.11	2.14	2.16	2.19	2.21														
150	2.23	2.26	2.27	2.30	2.32														
155	2.33	2.36	2.36	2.40	2.41														
160	2.43	2.45	2.45	2.48	2.50														
165	2.51	2.53	2.53	2.56	2.58														
170	2.59	2.61	2.60	2.63	2.64														
175	2.65	2.67	2.66	2.68	2.69														
180	2.69	2.69	2.68	2.68	2.71														

C Range: 0 - 360DEG
 C Interval: 15.0DEG
 Test Speed: HIGH
 Temperature: 25.3°C
 Operators: DAMIN
 Test Date: 2023-05-21

□ Range: 0 - 180DEG
 □ Interval: 1.0DEG
 Test System: EVERFINE GO-2000B_V1 SYSTEM V2.00.471
 Humidity: 65.0%
 Test Distance: 4.880m [K=1.0000]
 Remarks: